



*Environmentally Sound Solutions to
Solid Waste Challenges Since 1995*





*Atlanta-based consulting firm founded in
1995—dedicated to environmentally sound
solutions to solid waste challenges including
composting & recycling*



Composting at Georgia's Prisons



Georgia Department of Corrections (GDC) Chooses Composting

- GDC sewerage treatment plants under consent order from Georgia EPD
- Local landfills banned food waste
- GDC chooses composting prison food waste

1990 Georgia Solid Waste Management Act

- 25% municipal solid waste diversion goal
- Yard trimmings banned from public landfills
- Cities and counties forced to seek alternatives to landfill

Composting

- Nature's Recycling Process
- Economical
- Environmentally Friendly
- Low Tech
- Produces a 100% Usable & Valuable By-Product

Nine Compost Operations

- Nine Food Waste Compost Operations
- Process Food Waste from 19 GDC Prisons & Facilities
- Yard Trimmings & Wood Waste from Local Area
- Partnerships with 14 Municipalities, Counties & State Agencies

Community Environmental

- Consultants
- Characterize Waste Stream
- Environmental Site Assessment
- Secure Permitting
- Specify Equipment
- Technical Assistance
- Compost Training for Personnel
- Project Monitoring, Oversight & Troubleshooting

GDC Compost Operations

- Dooly State Prison, Unadilla
- Georgia Diagnostic & Classification Prison, Jackson
- Hays State Prison, Trion
- Lee State Prison, Leesburg
- Phillips State Prison, Buford
- Rogers State Prison, Reidsville
- Telfair State Prison, Helena-McRae
- Valdosta Partnership, Valdosta
- Washington State Prison, Davisboro

Nitrogen



Nitrogen



Carbon



Carbon



Air



Air



Moisture



Moisture



Temperature



Program Regionalized to Include:

- Autry SP
- Calhoun SP
- Georgia SP
- Hancock SP
- Johnson SP
- Lowndes SP
- Macon SP
- Milan SP
- Pulaski SP
- Smith SP
- Walker SP
- Wilcox SP
- GDC Canning Plant

Food Waste Diverted FY 2007

- **4,974 Tons Diverted**
- **17,807 Tons of Yard Trimmings & Wood Waste Processed**
- **Food Waste Diversion Cost Savings \$198,960.00**
- **Value of Finished Compost \$455,620.00**

Windrow Composting



Equipment



GDC Compost & Recycling Programs



Tractor



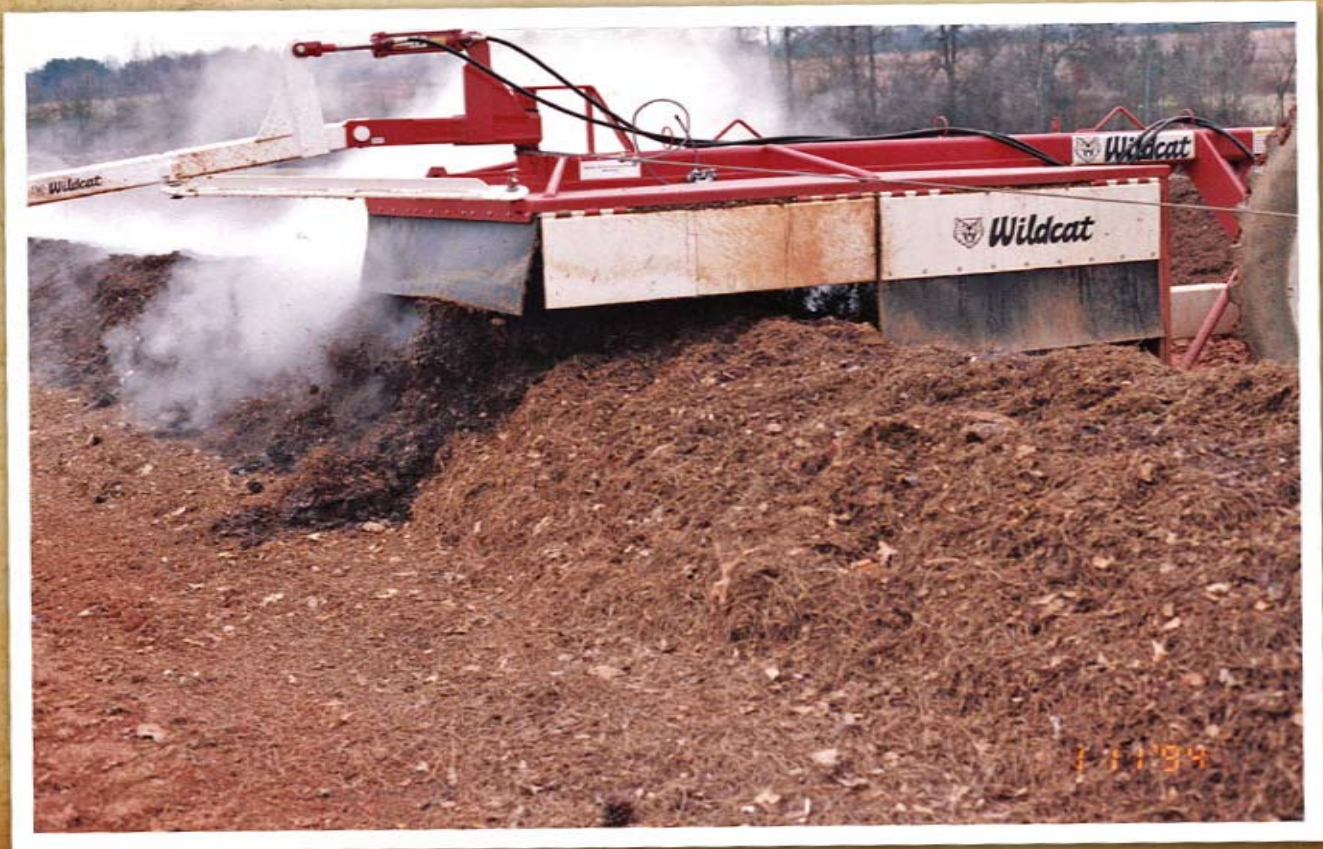
Tractor



Tractor



Compost Turner



Compost Turner



Compost Turner



Mixer Wagon



Mixer Wagon



Mixer Wagon



Mixer Wagon



Chippers & Tub Grinders



Chippers & Tub Grinders



Facilities



Facilities



Facilities



GDC Recycling Program



GDC Recycling Program

- 39 GDC Prisons & Facilities Served

GDC Recycling Program

- **Cardboard**
- **Steel Cans**
- **Scrap Metals**
- **Aluminum**
- **Wood Pallets**

Cardboard



Steel Cans



Aluminum



Wood Pallets



Scrap Metals



FY 2007 Recycling Revenue

- **\$75,067.45** Received for Recyclables
- Recycling Revenue Retained at Each Prison to Support Composting & Recycling Efforts
- **\$44,000.00+** Diversion Cost Savings

GDC Composting & Recycling Benefits

- 60% Average Reduction in Waste Disposal Costs Through Combination of Food Waste Composting & Recycling

GDC Composting & Recycling Benefits

- Total Composting & Recycling
Diversion Cost Savings
\$955,480.00

GDC Composting & Recycling Benefits

- 23,887 Tons Food Waste & Recyclables Diverted in FY 2007

Awards

- 1998 & 2002 Georgia Governor's Award for Pollution Prevention
- 2002 Air & Waste Management Assoc. Environmental Award