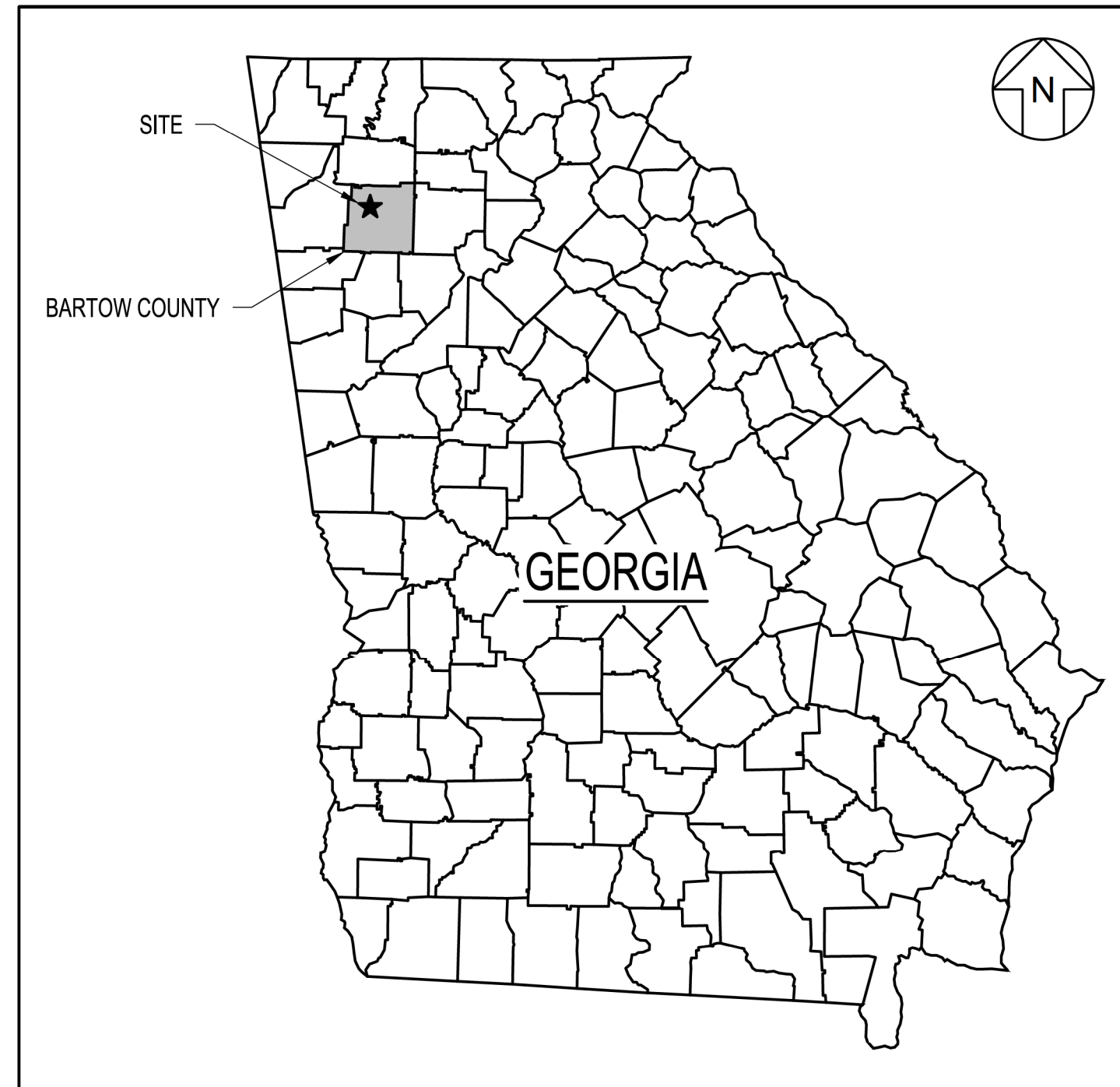


PLANT BOWEN ASH POND 1 (AP-1) CLOSURE CLOSURE DRAWINGS BARTOW COUNTY, GEORGIA AUGUST 2021



SOURCE: MICROSOFT CORPORATION BING MAPS 2017
LOCATION MAP
NOT TO SCALE

LIST OF DRAWINGS			
DRAWING NO.	DRAWING TITLE	REVISION	DATE
1	COVER SHEET	0	AUGUST 2021
2	LEGENDS, ABBREVIATIONS, AND REFERENCE NOTES	0	AUGUST 2021
3	PERMIT BOUNDARY SURVEY AND LEGAL DESCRIPTION	0	AUGUST 2021
4	SITE PLAN	0	AUGUST 2021
5	EXISTING SITE CONDITIONS AND TOPOGRAPHY	0	AUGUST 2021
6	APPROXIMATE BOTTOM OF AP-1 GRADES	0	AUGUST 2021
7	FOUNDATION IMPROVEMENT PLAN	0	AUGUST 2021
8	EXCAVATION PLAN - OVERALL	0	AUGUST 2021
9	EXCAVATION PLAN - SOUTH AP-1	0	AUGUST 2021
10	EXCAVATION PLAN - NORTH AP-1	0	AUGUST 2021
11	TOP OF LINER GRADING PLAN - OVERALL	0	AUGUST 2021
12	TOP OF LINER GRADING PLAN - SOUTH AP-1	0	AUGUST 2021
13	TOP OF LINER GRADING PLAN - NORTH AP-1	0	AUGUST 2021
14	TOP OF CCR GRADING PLAN - OVERALL	0	AUGUST 2021
15	TOP OF CCR GRADING PLAN - SOUTH AP-1	0	AUGUST 2021
16	TOP OF CCR GRADING PLAN - NORTH AP-1	0	AUGUST 2021
17	FINAL CLOSURE GRADING PLAN - OVERALL	0	AUGUST 2021
18	FINAL CLOSURE GRADING PLAN - SOUTH AP-1	0	AUGUST 2021
19	FINAL CLOSURE GRADING PLAN - NORTH AP-1	0	AUGUST 2021
20	CLOSURE PHASING PLANS I	0	AUGUST 2021
21	CLOSURE PHASING PLANS II	0	AUGUST 2021
22	CLOSURE PHASING PLANS III	0	AUGUST 2021
23	CLOSURE PHASING PLANS IV	0	AUGUST 2021
24	SITE CROSS SECTIONS I	0	AUGUST 2021
25	SITE CROSS SECTIONS II	0	AUGUST 2021
26	SITE CROSS SECTIONS III	0	AUGUST 2021
27	LINER SYSTEM DETAILS I	0	AUGUST 2021
28	LINER SYSTEM DETAILS II	0	AUGUST 2021
29	FINAL COVER SYSTEM DETAILS	0	AUGUST 2021
30	PERIMETER DETAILS	0	AUGUST 2021
31	PERIMETER BERM CROSS SECTIONS I	0	AUGUST 2021
32	PERIMETER BERM CROSS SECTIONS II	0	AUGUST 2021
33	LEACHATE MANAGEMENT PLAN	0	AUGUST 2021
34	LEACHATE MANAGEMENT SYSTEM DETAILS I	0	AUGUST 2021
35	LEACHATE MANAGEMENT SYSTEM DETAILS II	0	AUGUST 2021
36	LEACHATE MANAGEMENT SYSTEM DETAILS III	0	AUGUST 2021
37	LEACHATE MANAGEMENT SYSTEM DETAILS IV	0	AUGUST 2021
38	STORMWATER MANAGEMENT SYSTEM PLAN - OVERVIEW	0	AUGUST 2021
39	STORMWATER MANAGEMENT SYSTEM PLAN - SOUTH AP-1	0	AUGUST 2021
40	STORMWATER MANAGEMENT SYSTEM PLAN - NORTH AP-1	0	AUGUST 2021
41	STORMWATER MANAGEMENT SYSTEM DETAILS I	0	AUGUST 2021
42	STORMWATER MANAGEMENT SYSTEM DETAILS II	0	AUGUST 2021
43	STORMWATER MANAGEMENT SYSTEM DETAILS III	0	AUGUST 2021
44	STORMWATER MANAGEMENT SYSTEM DETAILS IV	0	AUGUST 2021
45	STORMWATER MANAGEMENT SYSTEM DETAILS V	0	AUGUST 2021
46	STORMWATER MANAGEMENT SYSTEM DETAILS VI	0	AUGUST 2021
47	EROSION AND SEDIMENT CONTROL DETAILS I	0	AUGUST 2021
48	EROSION AND SEDIMENT CONTROL DETAILS II	0	AUGUST 2021
49	EROSION AND SEDIMENT CONTROL DETAILS III	0	AUGUST 2021
50	COMPLIANCE MONITORING NETWORK	0	AUGUST 2021



SOURCE: MICROSOFT CORPORATION BING MAPS 2017
VICINITY MAP
SCALE IN FEET
0 1,500 3,000

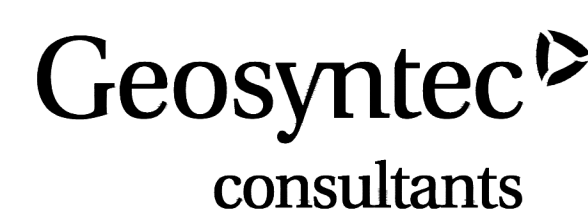
PHYSICAL SITE ADDRESS:
PLANT BOWEN
317 COVERED BRIDGE ROAD SW
CARTERSVILLE, GEORGIA 30120

PREPARED FOR:



GEORGIA POWER ENVIRONMENTAL AFFAIRS
241 RALPH MCGILL BOULEVARD NE
ATLANTA, GEORGIA 30308
CONTACT: GENERAL MANAGER
TELEPHONE: 404.506.6505

PREPARED BY:



1255 ROBERTS BOULEVARD NW, SUITE 200
KENNESAW, GEORGIA 30144-3694
TELEPHONE: 678.202.9500



PERMIT DRAWING
NOT FOR CONSTRUCTION

0	AUG. 2021	SUBMITTAL TO GA EPD	JV/KH	RB
REV	DATE	DESCRIPTION	DRN	APP
COVER SHEET				
PLANT BOWEN ASH POND 1 (AP-1) CLOSURE DRAWINGS BARTOW COUNTY, GEORGIA				
Geosyntec consultants				
1255 ROBERTS BOULEVARD NW, SUITE 200 KENNESAW, GEORGIA 30144 USA PHONE: 678.202.9500 WWW.GEOSYNTEC.COM				
PROJ. NO.	GR6601	DWG.	GR6601-001	EDIT 8.16.2021
SCALE	AS SHOWN	DRAWING 1 OF 50		
DATE	AUGUST 2021			

LINETYPE LEGEND

	EDGE OF ROAD / EXISTING BUILDINGS
	RAILROAD TRACKS
	POWER TRANSMISSION LINE EASEMENT
	GAS LINE AND EASEMENT
	EXISTING PIPE
	TREE LINE
	STREAMS / WATER LINE / CREEK
	EXISTING GROUND
	APPROXIMATE TOP OF BEDROCK (NOTE 10)
	APPROXIMATE BOTTOM OF CCR
	PREDICTED POST-CLOSURE SEASONAL HIGH GROUNDWATER POTENTIOMETRIC SURFACE (NOTE 9)
	BOTTOM OF EXCAVATION
	PERMIT BOUNDARY
	PROPERTY BOUNDARY (NOTE 5)
	APPROXIMATE EXISTING LIMIT OF AP-1 / LIMIT OF LINER
	FINAL LIMIT OF CCR
	LEACHATE COLLECTION CORRIDOR
	LEACHATE FORCEMAIN
	FINAL COVER TOP DECK DIVERSION BERM
	FINAL COVER TOP DECK LET-DOWN CHANNEL
	FINAL COVER SIDESLOPE DRAINAGE BENCH
	FINAL COVER DOWNCHUTE CHANNEL
	STORMWATER CHANNEL
	TEXTURED HDPE OR LLDPE GEOMEMBRANE
	CLOSURETURF® SYSTEM
	DOUBLE-SIDED GEOCOMPOSITE
	NON-WOVEN GEOTEXTILE SEPARATOR OR CUSHION
	GEOSYNTHETIC CLAY LINER
	LIMIT OF DISTURBANCE
	CONTACT WATER DIVERSION
	STORMWATER (NON-CONTACT WATER) DIVERSION

SYMBOL LEGEND

	EXTRUSION WELD
	GROUNDWATER MONITORING WELL
	SLOPE GRADE
	SLOPE INDICATOR
	SLOPE LABEL
	TRAILER / BUILDING / TANK
	VEGETATION
	GROUNDWATER OR WATER SURFACE
	STORMWATER FLOW DIRECTION
	STORMWATER CHANNEL OUTLET FLUME
	LEACHATE SUMP
	LEACHATE FORCEMAIN AIR RELEASE MANHOLE
	LEACHATE FORCEMAIN CLEANOUT MANHOLE
	LEACHATE FORCEMAIN JUNCTION MANHOLE
	TEMPORARY CONTACT-WATER COLLECTION LOCATION

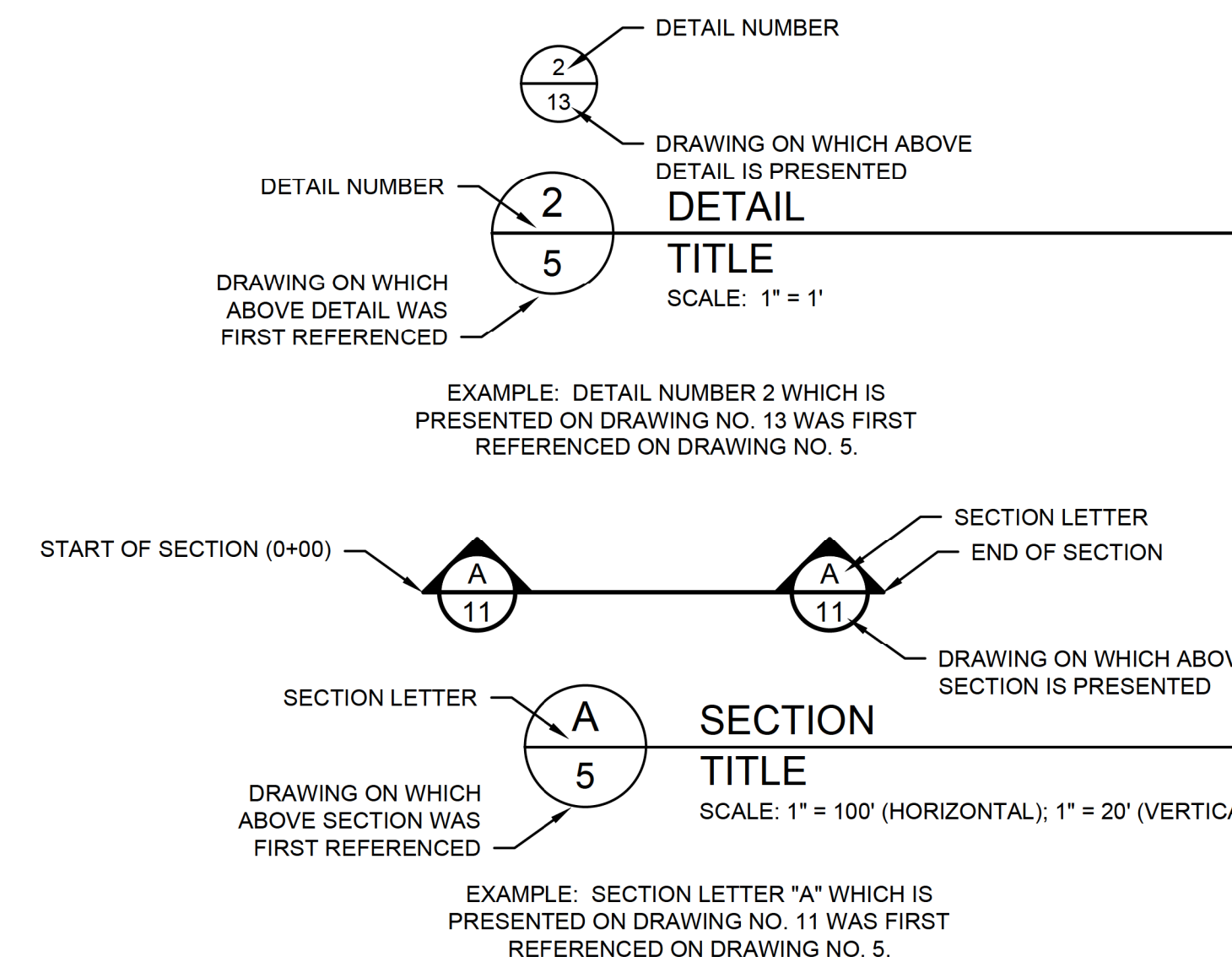
HATCH PATTERN LEGEND

	LINED STORMWATER POND
	CONCRETE
	FINE SAND FILTER LAYER
	FINE GRAVEL DRAINAGE LAYER
	MEDIUM GRAVEL DRAINAGE LAYER
	COARSE GRAVEL DRAINAGE LAYER
	FINE-SCREENED COMPACTED CLAY LINER
	COARSE-SCREENED COMPACTED CLAY LINER
	PROTECTIVE COVER SOIL / TRENCH BACKFILL / STRUCTURAL FILL
	PIPE EMBEDMENT FILL / COMPACTED GRANULAR SUBBASE
	VEGETATIVE COVER LAYER
	CCR
	AGGREGATE
	RIPRAP
	CONSOLIDATED AREA FOUNDATION IMPROVEMENTS
	OTHER AREA FOUNDATION IMPROVEMENTS
	100-YEAR FLOODPLAIN
	WETLANDS
	COVERED CCR AREA (NON-CONTACT WATER)
	TEMPORARY CCR STOCKPILE AREA
	CONTACT WATER COLLECTION AREA
	COMPACTED CLAYEY SOIL
	LINED CONTACT WATER POND

CONTOUR LEGEND

	EXISTING GROUND ELEVATION (FEET) (NOTE 1)
	APPROXIMATE BOTTOM OF CCR SURFACE ELEVATION (FEET)
	EXCAVATION SURFACE ELEVATION (FEET)
	TOP OF LINER ELEVATION (FEET)
	TOP OF CCR ELEVATION FOR SOIL-GEOSYNTHETIC COMPOSITE COVER (FEET)
	TOP OF FINAL COVER SYSTEM / TOP OF CCR FOR ALTERNATIVE COVER SYSTEM (CLOSURETURF® COVER) / FINISHED GRADE ELEVATION (FEET)
	PREDICTED POST-CLOSURE SEASONAL HIGH GROUNDWATER POTENTIOMETRIC SURFACE ELEVATION (FEET)

DETAIL AND SECTION IDENTIFICATION LEGEND



ABBREVIATIONS

AASHTO	AMERICAN ASSOCIATION OF STATE HIGHWAY AND TRANSPORTATION OFFICIALS
AC	ACRES
APP	APPROVED BY
CAD	COMPUTER-AIDED DRAFTING
ASTM	AMERICAN SOCIETY FOR TESTING AND MATERIALS
C-TRM	COMPOSITE TURF REINFORCEMENT MAT
CCR	COAL COMBUSTION RESIDUALS
CL	CENTERLINE
COA	CONSTRUCTION QUALITY ASSURANCE
DIA	DIAMETER
DRN	DRAWN BY
DWG	DRAWING
E	EAST OR EASTING
EL	ELEVATION
EPA	ENVIRONMENTAL PROTECTION AGENCY
FEMA	FEDERAL EMERGENCY MANAGEMENT AGENCY
FT	FEET
GDOT	GEORGIA DEPARTMENT OF TRANSPORTATION
GPC	GEORGIA POWER COMPANY
GSWCC	GEORGIA SOIL AND WATER CONSERVATION COMMISSION
GSWP	GENERAL SERVICE WATER POND
H:V	HORIZONTAL TO VERTICAL LENGTH RATIO FOR A SLOPE
HDPE	HIGH DENSITY POLYETHYLENE
HECP	HYDRAULIC EROSION CONTROL PRODUCTS
HPTRM	HIGH PERFORMANCE TURF REINFORCEMENT MAT
HWY	HIGHWAY
IN	INCH
INV	INVERT
LBS	POUNDS
LF	LINEAR FOOT
LLDPE	LINEAR LOW DENSITY POLYETHYLENE
LOD	LIMITS OF DISTURBANCE
MAX	MAXIMUM
MIN	MINIMUM
MSL	MEAN SEA LEVEL
N	NORTH / NORTHING
NAD	NORTH AMERICAN DATUM
NAVD88	NORTH AMERICAN VERTICAL DATUM OF 1988
NE	NORTHEAST
NO.	NUMBER
NPDES	NATIONAL POLLUTANT DISCHARGE ELIMINATION SYSTEM
N.S.A.	NATIONAL STONE ASSOCIATION
NTS	NOT TO SCALE
NW	NORTHWEST
OC	ON CENTER
OZ	OUNCE
PC	PERIMETER CHANNEL
PROJ	PROJECT
RCP	REINFORCED CONCRETE PIPE
RD	ROAD
RECP	ROLLED EROSION CONTROL PRODUCTS
REV	REVISION
RP	RECYCLE POND
S	SOUTH
SCS	SOUTHERN COMPANY SERVICES
SF	SILT FENCE
SWP	STORMWATER PIPE
TRM	TURF REINFORCEMENT MAT
TYP	TYPICAL
UV	ULTRAVIOLET
W	WEST OR WIDTH
W.S.	WATER SURFACE
WWTS	WASTEWATER TREATMENT SYSTEM
%	PERCENT OR PERCENTILE

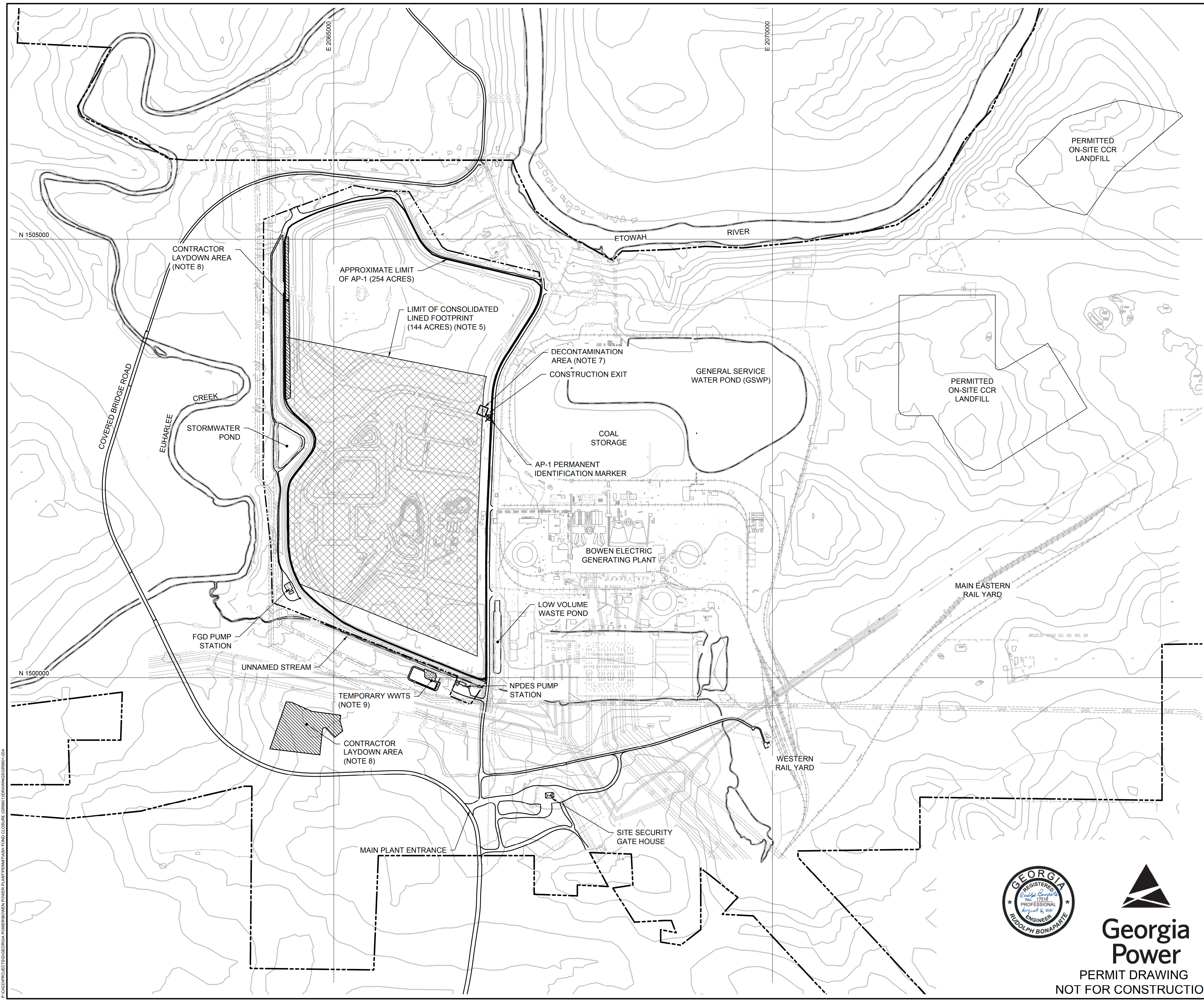
GENERAL SITE NOTES

- IN THE VICINITY OF AP-1, TOPOGRAPHY, UTILITIES, EXISTING ROADS, STREAMS, AND TREELINES SHOWN ON THIS DRAWING SET IS FROM A LIDAR TOPOGRAPHIC SURVEY DATED 4/1/2017, PROVIDED AS AN ELECTRONIC COMPUTER-AIDED DRAFTING DRAWING FILE BY SOUTHERN COMPANY SERVICES.
- BEYOND THE AP-1 AREA MAPPED WITH LIDAR TOPOGRAPHY AS DELINEATED ON THE DRAWINGS, TOPOGRAPHY IS FROM UNITED STATES GEOLOGIC SURVEY (USGS) DIGITAL MAPPING FILE, "NED 1 N35W085 ARCGRID GEORGIA".
- ELEVATIONS ARE SHOWN IN FEET ABOVE MEAN SEA LEVEL (FT, MSL), THE NORTH AMERICAN VERTICAL DATUM OF 1988 (NAVD88).
- GRID COORDINATE SYSTEM CORRESPONDS TO NORTH AMERICAN DATUM OF 1983 (NAD83), GEORGIA STATE PLANE, WEST ZONE, US FOOT.
- PROPERTY BOUNDARY IS APPROXIMATE AND WAS PROVIDED AS AN ELECTRONIC CAD DRAWING FILE BY SOUTHERN COMPANY SERVICES.
- MONITORING WELL COORDINATES, GROUND SURFACE ELEVATIONS, AND SCREENED INTERVALS WERE OBTAINED FROM THE "SEPTEMBER 2020 WELL INSTALLATION ADDENDUM MEMORANDUM" DATED 29 SEPTEMBER 2020, PREPARED BY GEOSYNTEC CONSULTANTS, INC.
- EXISTING LIMITS OF AP-1 AS PRESENTED IN THIS DRAWING SET ARE APPROXIMATE AND REPRESENT THE INTERIOR CREST OF THE CONTAINMENT DIKES. LIMITS ARE BASED ON A COMBINATION OF TOPOGRAPHIC MAP INTERPRETATION, EXAMINATION OF AS-BUILT PLANS OF CONTAINMENT DIKES, AND AIRPHOTO INTERPRETATION. FROM THIS INFORMATION, AN ESTIMATE WAS MADE OF THE LATERAL LOCATION AND VERTICAL PROFILE OF THE AP-1 LIMITS.
- BOTTOM OF CCR SURFACE IS APPROXIMATE AND IS BASED ON AN ELECTRONIC CAD DRAWING PROVIDED BY SOUTHERN COMPANY SERVICES OF THE AS-CONSTRUCTED (PRE-ASH) BOTTOM OF AP-1 FROM TOPOGRAPHY DATED 10/30/1969, WITH UPDATES TO THE SURFACE MADE BY GEOSYNTEC USING ELEVATION DATA OF THE CCR-RESIDUUM INTERFACE AS ESTIMATED FROM BORINGS DURING RECENT SUBSURFACE INVESTIGATIONS IN AP-1. ON INTERIOR DIKE SIDESLOPES, BOTTOM OF CCR SURFACE WAS CREATED USING A TWO HORIZONTAL TO ONE VERTICAL (2H:1V) SLOPE.
- PREDICTED POST-CLOSURE SEASONAL HIGH GROUNDWATER POTENTIOMETRIC SURFACE OBTAINED FROM GROUNDWATER FLOW MODELING RESULTS AS DOCUMENTED IN THE "HYDROGEOLOGIC ASSESSMENT REPORT (REVISION 3)" (PART B, SECTION 2 OF THIS PERMIT APPLICATION).
- TOP OF BEDROCK SURFACE IS APPROXIMATE AND WAS DEVELOPED BY GEOSYNTEC USING AVAILABLE SUBSURFACE INFORMATION FROM PREVIOUS SITE INVESTIGATIONS.
- DURING CLOSURE CONSTRUCTION, CONTRACTOR WILL VERIFY BOTH LATERAL AND VERTICAL EXTENT OF CCR IN THE FIELD.
- EXCAVATION SURFACE IS APPROXIMATE AND WAS DEVELOPED BASED ON THE ESTIMATED BOTTOM OF CCR AND TO MEET THE FOLLOWING CRITERIA: (I) EXCAVATE AT LEAST SIX INCHES BELOW THE BOTTOM OF CCR SURFACE IN ALL AREAS OF AP-1; (II) CONDUCT ADDITIONAL EXCAVATION AS NEEDED BENEATH THE FLOOR AREAS OF THE CONSOLIDATED LINED FOOTPRINT AND BENEATH THE BASE OF THE NEW NORTH AND SOUTH CONTAINMENT DIKES TO PROVIDE AN 8-FT (MIN) COMPACTED SOIL BUFFER ZONE BELOW THE LINER SYSTEM; AND (III) CONDUCT ADDITIONAL EXCAVATION IN THE AREAS SOUTH AND NORTH OF THE CONSOLIDATED LINED FOOTPRINT (CLOSURE-BY-REMOVAL AREAS) AS NEEDED TO GRADE TO DRAIN UNDER FINAL CLOSED CONDITIONS.
- EXCAVATION GRADES WILL BE ADJUSTED AS NECESSARY DURING CLOSURE CONSTRUCTION BASED ON APPLYING THE ABOVE CRITERIA TO THE ACTUAL FIELD LOCATED BOTTOM OF CCR, AS WELL AS BASED ON FOUNDATION EVALUATIONS AND IMPROVEMENTS CONDUCTED IN ACCORDANCE WITH THE "FOUNDATION IMPROVEMENT PLAN" (INCLUDED IN THE "CLOSURE PLAN" IN PART A, SECTION 7 OF THIS PERMIT APPLICATION).
- MATERIAL PROPERTIES FOR THE FILL SOIL, LINER SYSTEM, LEACHATE COLLECTION SYSTEM, AND FINAL COVER SYSTEM ARE PROVIDED IN THE "CONSTRUCTION QUALITY ASSURANCE (CQA) PLAN" (PART A, SECTION 5 OF THIS PERMIT APPLICATION).
- DEWATERING OF CCR DURING CLOSURE CONSTRUCTION WILL BE PERFORMED AS NEEDED.
- INTERIM STORM WATER MANAGEMENT DURING CLOSURE CONSTRUCTION - INCLUDING MANAGEMENT OF CONTACT WATER AND "CLEAN" (I.E., NON-CONTACT) STORMWATER - WILL BE CONDUCTED IN ACCORDANCE WITH THE STORMWATER AND CONTACT WATER MANAGEMENT PROCEDURES DESCRIBED IN THE "CLOSURE PLAN" (PART A, SECTION 7 OF THIS PERMIT APPLICATION). IN SUMMARY: CONTACT WATER WILL BE PUMPED OR CONVEYED BY GRAVITY TO DESIGNATED STORAGE AREAS IN AP-1, WHERE IT WILL BE PUMPED TO AN ON-SITE WASTEWATER TREATMENT SYSTEM (WWTS) OR OTHERWISE PROPERLY MANAGED IN ACCORDANCE WITH THE PLANT'S NPDES PERMIT REQUIREMENTS AND THEN DISCHARGED OFF-SITE VIA NPDES OUTFALL NO. 01A. NON-CONTACT STORMWATER WILL BE DISCHARGED TO RECEIVING WATER BODIES WITHOUT TREATMENT.
- DUST CONTROL DURING CLOSURE CONSTRUCTION WILL BE MANAGED AS DESCRIBED IN THE "CLOSURE PLAN" (PART A, SECTION 7 OF THIS PERMIT APPLICATION).
- INTERNAL HAUL ROADS, ACCESS RAMPS, AND INTERIM STORMWATER FEATURE LOCATIONS WILL BE EVALUATED AS PART OF THE DETAILED DESIGN. ADDITIONAL BERMS AND EXTERIOR DIVERSIONS WILL BE CONSTRUCTED, AS NEEDED, TO ADEQUATELY MANAGE STORMWATER RUNOFF.
- VOLUME OF IN-PLACE CCR TO BE REMOVED FROM AP-1 IS ESTIMATED TO DECREASE (SHRINK) BY APPROXIMATELY 10 PERCENT UPON DEWATERING, PLACEMENT, AND COMPACTION WITHIN THE CONSOLIDATED LINED FOOTPRINT. AS PHASED CLOSURE CONSTRUCTION PROGRESSES, ACTUAL CCR QUANTITIES AND SHRINKAGE FACTORS WILL BE TRACKED AND COMPARED TO THE REMAINING CAPACITY, AND THE SIZE OF THE CONSOLIDATED LINED FOOTPRINT AND/OR ELEVATIONS OF THE FINAL COVER GRADES WILL BE REVISED ACCORDINGLY TO ACCOMMODATE THE ACTUAL SITE-SPECIFIC CCR VOLUME, WHILE MAINTAINING COMPLIANCE WITH APPLICABLE DESIGN CRITERIA.



LEGENDS, ABBREVIATIONS, AND REFERENCE NOTES					
PLANT BOWEN ASH POND 1 (AP-1) CLOSURE DRAWINGS BARTOW COUNTY, GEORGIA					
<small>1255 ROBERTS BOULEVARD, NW, SUITE 200 KENNESAW, GEORGIA 30144 USA</small>					
<small>PHONE: 678.202.9500 WWW.GEOSYNTEC.COM</small>					
PROJ. NO.	GR6601	DWG.	GR6601-002	EDIT	08.16.21
SCALE	N/A	DRAWING 2 OF 50			
DATE	AUGUST 2021				

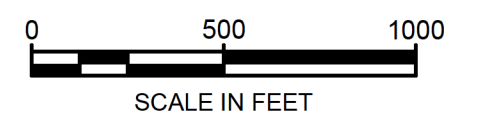
**PERMIT DRAWING
NOT FOR CONSTRUCTION**



LEGEND

- 730 EXISTING GROUND ELEVATION (FEET) (NOTE 1)
- MAIN SITE AND AP-1 ACCESS ROAD
- APPROXIMATE EXISTING LIMIT OF AP-1 (NOTE 1)
- LIMIT OF CONSOLIDATED LINED FOOTPRINT (NOTE 5)
- PROPERTY BOUNDARY
- PERMIT BOUNDARY (NOTE 6)
- TEMPORARY WWTS PAD

- NOTES:**
- SEE DRAWING 2 FOR LEGENDS, ABBREVIATIONS, AND GENERAL SITE NOTES.
 - ACREAGE OF AP-1 REPRESENTS THE TWO-DIMENSIONAL (2D) PLAN AREA WITHIN THE ESTIMATED AP-1 LIMITS (ALSO REPRESENTING THE POTENTIAL LATERAL LIMITS OF CCR).
 - TOPOGRAPHIC CONTOUR INTERVALS ARE PRESENTED AT 10-FT INTERVALS ON THIS DRAWING, FOR CLARITY. SEE DRAWING 5 FOR TOPOGRAPHIC CONTOURS AT 2-FT CONTOUR INTERVALS.
 - SEE DRAWING 5 FOR AN EXISTING CONDITIONS PLAN IN THE VICINITY OF AP-1, SHOWN AT AN ENLARGED SCALE.
 - LIMIT OF CONSOLIDATED LINED FOOTPRINT REFERS TO LIMIT OF LINER.
 - ALONG EASTERN SIDE OF AP-1, PERMIT BOUNDARY IS ALIGNED WITH APPROXIMATE LIMIT OF AP-1, AND THUS OBTUSCURED IN THIS AREA ON THIS DRAWING. REFER TO DRAWING 3 FOR THE PERMIT BOUNDARY SURVEY AND LEGAL DESCRIPTION.
 - A DECONTAMINATION STATION WILL BE ESTABLISHED AT THE APPROXIMATE LOCATION SHOWN. EQUIPMENT WILL BE DECONTAMINATED (I.E., CCR PARTICLES REMOVED) PRIOR TO EXITING THE AP-1 FOOTPRINT. AS PHASED CLOSURE CONSTRUCTION APPROACHES THIS AREA, THE DECONTAMINATION STATION MAY BE RELOCATED SLIGHTLY AS NEEDED TO ACCOMMODATE CONSTRUCTION OPERATIONS.
 - CONTRACTOR LAYDOWN AREAS FOR STAGING OF CONSTRUCTION MATERIALS AND EQUIPMENT WILL BE AT THE APPROXIMATE LOCATIONS SHOWN. EQUIPMENT MAY ALSO BE STAGED WITHIN THE AP-1 ADJACENT TO WORK AREAS.
 - A TEMPORARY WWTS WILL BE ESTABLISHED AT THE APPROXIMATE LOCATION SHOWN FOR TREATMENT OF LEACHATE AND CONTACT WATER GENERATED DURING CLOSURE CONSTRUCTION. AT THE COMPLETION OF CLOSURE CONSTRUCTION, LEACHATE WILL BE ROUTED TO A PERMANENT ON-SITE WWTS LOCATED OUTSIDE THE AP-1 PERMIT BOUNDARY, ON THE PLANT BOWEN PROPERTY.



REV	DATE	DESCRIPTION	DRN	APP
0	AUG. 2021	SUBMITTAL TO GA EPD	JV/KH	RB

SITE PLAN

PLANT BOWEN ASH POND 1 (AP-1)
CLOSURE DRAWINGS
BARTOW COUNTY, GEORGIA

Geosyntec
consultants

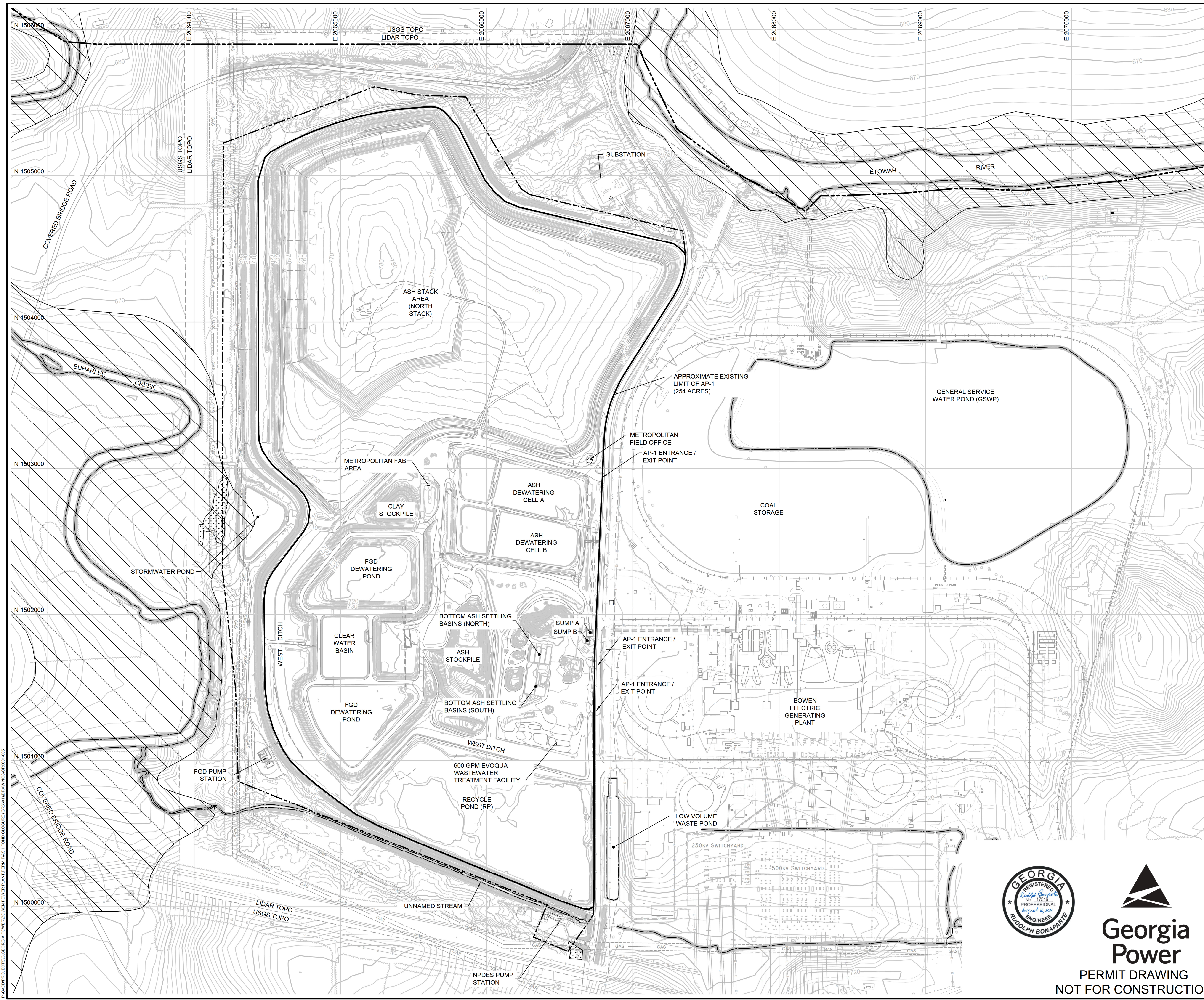
1255 ROBERTS BOULEVARD, NW, SUITE 200
KENNESAW, GEORGIA 30144 USA
PHONE: 678.202.9500
WWW.GEOSYNTEC.COM

PROJ. NO.	GR6601	DWG.	GR6601-004	EDIT	8/16/21
SCALE	1" = 500'	DRAWING 4 OF 50			
DATE	AUGUST 2021				



PERMIT DRAWING
NOT FOR CONSTRUCTION

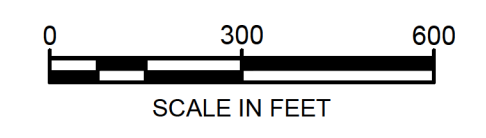
P:\CAD\PROJECTS\GEORGIA POWER\BOWEN POWER PLANT\PERMIT\ASH POND CLOSURE (GR6601)\DRAWINGS\GR6601-004



LEGEND

- EXISTING GROUND ELEVATION (FEET) (NOTE 1)
- EXISTING ROAD
- EXISTING PIPE
- PLANT BUILDINGS / STRUCTURES
- WATER-LINE / CREEK
- APPROXIMATE EXISTING LIMIT OF AP-1 (NOTE 1)
- PROPERTY BOUNDARY (NOTE 5)
- PERMIT BOUNDARY
- WETLAND (NOTE 3)
- 100-YEAR FLOODPLAIN (NOTE 4)

- NOTES:**
- SEE DRAWING 2 FOR LEGENDS, ABBREVIATIONS, AND GENERAL SITE NOTES.
 - TOPOGRAPHIC CONTOURS ARE PRESENTED AT 2-FT INTERVALS.
 - WETLAND LOCATIONS ARE AS DELINEATED BY ECOLOGICAL SOLUTIONS, INC. IN JUNE 2018.
 - 100-YEAR FLOODPLAIN IS TAKEN FROM FEMA FLOOD INSURANCE RATE MAP NUMBERS 13015C0245G AND 13015C0335G, BOTH DATED 28 SEPTEMBER 2007.
 - ALONG EASTERN SIDE OF AP-1, PERMIT BOUNDARY IS ALIGNED WITH APPROXIMATE LIMIT OF AP-1, AND THUS OBSCURED IN THIS AREA ON THIS DRAWING. REFER TO DRAWING 3 FOR THE PERMIT BOUNDARY SURVEY AND LEGAL DESCRIPTION.



REV	DATE	DESCRIPTION	DRN	APP
0	AUG. 2021	SUBMITTAL TO GA EPD	JV/KH	RB

EXISTING SITE CONDITIONS AND TOPOGRAPHY

PLANT BOWEN ASH POND 1 (AP-1)
CLOSURE DRAWINGS
BARTOW COUNTY, GEORGIA



1255 ROBERTS BOULEVARD, NW, SUITE 200 KENNESAW, GEORGIA 30144 USA		PHONE: 678.202.3500 WWW.GEOSYNTEC.COM	
PROJ. NO.	GR6601	DWG.	GR6601-005
SCALE	1" = 300'	EDIT	8/16/21
DATE	AUGUST 2021	DRAWING 5 OF 50	



**PERMIT DRAWING
NOT FOR CONSTRUCTION**

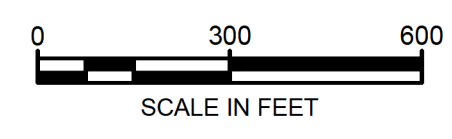
P:\CAD\PROJECTS\GEORGIA POWER\BOWEN POWER PLANT\PERMIT\ASH POND CLOSURE (GR6601)\DRAWINGS\DRW01.DWG



LEGEND

	APPROXIMATE BOTTOM OF CCR SURFACE ELEVATION (FEET) (NOTES 2, 3, AND 4)
	PERMIT BOUNDARY (NOTE 5)
	APPROXIMATE EXISTING LIMIT OF AP-1 (NOTE 1)

- NOTES:**
- SEE DRAWING 2 FOR LEGENDS, ABBREVIATIONS, AND GENERAL SITE NOTES.
 - CONTOURS SHOWN ON THIS DRAWING WITHIN LIMITS OF AP-1 REPRESENT BOTTOM OF AP-1 (I.E., BOTTOM OF CCR) GRADES. SEE NOTE 8 ON DRAWING 2. CONTOURS SHOWN ON THIS DRAWING BEYOND LIMITS OF AP-1 ARE EXISTING GROUND TOPOGRAPHY.
 - DURING CLOSURE CONSTRUCTION, CONTRACTOR WILL VERIFY BOTH LATERAL AND VERTICAL EXTENTS OF CCR IN THE FIELD.
 - AREAS WITHIN LATERAL EXTENT OF CCR IN AP-1 (AS FIELD-VERIFIED DURING CLOSURE CONSTRUCTION) WILL HAVE AN ADDITIONAL SIX-INCHES MINIMUM OF MATERIAL REMOVAL BELOW BOTTOM OF CCR. EXCAVATED CCR (INCLUDING SIX-INCHES MINIMUM OF ADDITIONAL MATERIAL EXCAVATION) WILL BE PLACED IN THE CONSOLIDATED LINED AREA.
 - ALONG EASTERN SIDE OF AP-1, PERMIT BOUNDARY IS ALIGNED WITH APPROXIMATE LIMIT OF AP-1, AND THUS OBSCURED IN THIS AREA ON THIS DRAWING. REFER TO DRAWING 3 FOR THE PERMIT BOUNDARY SURVEY AND LEGAL DESCRIPTION.



REV	DATE	DESCRIPTION	DRN	APP
0	AUG. 2021	SUBMITTAL TO GA EPD	JV/KH	RB

APPROXIMATE BOTTOM OF AP-1 GRADES

PLANT BOWEN ASH POND 1 (AP-1)
CLOSURE DRAWINGS
BARTOW COUNTY, GEORGIA



1255 ROBERTS BOULEVARD, NW, SUITE 200 KENNESAW, GEORGIA 30144 USA	PHONE: 678.202.9500 WWW.GEOSYNTEC.COM
PROJ. NO. GR6601	DWG. GR6601-006
SCALE 1" = 300'	DATE AUGUST 2021
EDIT 8/16/21	DRAWING 6 OF 50



PERMIT DRAWING
NOT FOR CONSTRUCTION

P:\CAD\PROJECTS\GEORGIA POWER\BOWEN POWER PLANT\PERMIT\ASH POND CLOSURE (GR6601)\DRAWINGS\GR6601-006



LEGEND

	EXCAVATION SURFACE ELEVATION (FEET) (NOTES 2 AND 3)
	PERMIT BOUNDARY (NOTE 4)
	APPROXIMATE EXISTING LIMIT OF AP-1 (NOTE 1)
	CONSOLIDATED AREA FOUNDATION IMPROVEMENTS (NOTE 3)
	OTHER AREA FOUNDATION IMPROVEMENTS (NOTE 3)

- NOTES:**
- SEE DRAWING 2 FOR LEGENDS, ABBREVIATIONS, AND GENERAL SITE NOTES.
 - EXCAVATION CONTOURS ON THIS DRAWING ARE THE SAME AS DRAWING 8. SEE NOTE 3, DRAWING 8 FOR BASIS FOR EXCAVATION CONTOURS.
 - FOUNDATION IMPROVEMENTS WILL BE PERFORMED IN ACCORDANCE WITH THE 'FOUNDATION IMPROVEMENT PLAN' INCLUDED WITH THIS PERMIT APPLICATION. A SUMMARY OF ACTIVITIES IS PROVIDED BELOW.
 - CONSOLIDATED LINED AREAS:** AS HIGHLIGHTED ON THIS DRAWING, WITHIN THE FLOOR AREAS OF THE CONSOLIDATED LINED FOOTPRINT AND BENEATH THE BASE OF THE NEW NORTH AND SOUTH DIKES, AFTER REMOVAL OF CCR (AND SIX-INCHES OF ADDITIONAL MATERIAL BELOW CCR), THE FOLLOWING ACTIVITIES WILL BE PERFORMED: (I) ADDITIONAL OVER-EXCAVATION AS PRESENTED AND DESCRIBED ON DRAWING 8; (II) FOUNDATION EVALUATION AND MITIGATION IN ACCORDANCE WITH THE FOUNDATION IMPROVEMENT PLAN; (III) COMPACTED SOIL FILL LAYER PLACEMENT TO ACHIEVE LINER SUBGRADE (BOTTOM OF CLAY LINER) GRADES.
 - OTHER AREAS:** AS HIGHLIGHTED ON THIS DRAWING, WITHIN AP-1 IN THE OTHER AREAS BEYOND THE CONSOLIDATED LINED AREA (PRIMARILY TO THE NORTH AND SOUTH), AFTER REMOVAL OF CCR (AND SIX-INCHES OF ADDITIONAL MATERIAL BELOW CCR), THE FOLLOWING ACTIVITIES WILL BE PERFORMED: (I) ADDITIONAL EXCAVATION AS PRESENTED AND DESCRIBED ON DRAWING 8; (II) FOUNDATION EVALUATION AND MITIGATION IN ACCORDANCE WITH THE FOUNDATION IMPROVEMENT PLAN; (III) COMPACTED SOIL FILL PLACEMENT AS NEEDED TO GRADE TO DRAIN UNDER FINAL CLOSED CONDITIONS.
 - ALONG EASTERN SIDE OF AP-1, PERMIT BOUNDARY IS ALIGNED WITH APPROXIMATE LIMIT OF AP-1, AND THUS OBTAINED IN THIS AREA ON THIS DRAWING. REFER TO DRAWING 3 FOR THE PERMIT BOUNDARY SURVEY AND LEGAL DESCRIPTION.



REV	DATE	DESCRIPTION	DRN	APP
0	AUG. 2021	SUBMITTAL TO GA EPD	JV/KH	RB

FOUNDATION IMPROVEMENT PLAN

**PLANT BOWEN ASH POND 1 (AP-1)
CLOSURE DRAWINGS
BARTOW COUNTY, GEORGIA**

Geosyntec
consultants

1255 ROBERTS BOULEVARD, NW, SUITE 200
KENNESAW, GEORGIA 30144 USA
PHONE: 678.202.9500
WWW.GEOSYNTEC.COM

PROJ. NO.	GR6601	DWG.	GR6601-007	EDIT	8/16/21
SCALE	1" = 300'	DRAWING 7 OF 50			
DATE	AUGUST 2021				



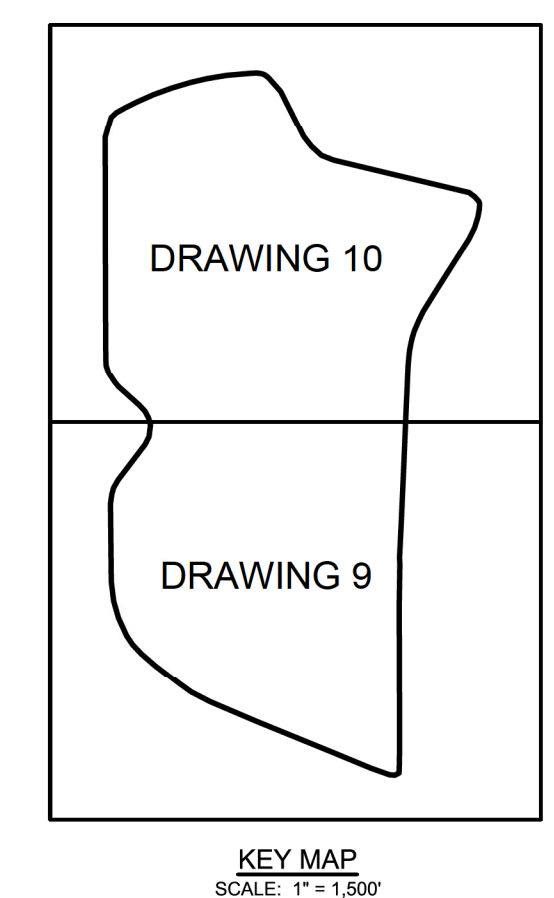
**PERMIT DRAWING
NOT FOR CONSTRUCTION**

P:\CAD\PROJECTS\GEORGIA POWER\BOWEN POWER PLANT\ASH POND CLOSURE (GR6601)\DRAWINGS\GR6601-007



LEGEND

	EXCAVATION SURFACE ELEVATION (FEET) (NOTES 2 AND 3)
	PERMIT BOUNDARY (NOTE 6)
	APPROXIMATE EXISTING LIMIT OF AP-1 (NOTE 1)
	APPROXIMATE LIMIT OF CONSOLIDATED AREA FOUNDATION IMPROVEMENTS



- NOTES:**
- SEE DRAWING 2 FOR LEGENDS, ABBREVIATIONS, AND GENERAL SITE NOTES.
 - CONTOURS SHOWN ON THIS DRAWING WITHIN LIMITS OF AP-1 REPRESENT ESTIMATED MINIMUM BOTTOM OF EXCAVATION GRADES. CONTOURS SHOWN ON THIS DRAWING BEYOND LIMITS OF AP-1 ARE EXISTING GROUND TOPOGRAPHY.
 - EXCAVATION SURFACE IS APPROXIMATE, AND WAS DEVELOPED BASED ON THE ESTIMATED BOTTOM OF CCR AND TO MEET THE FOLLOWING CRITERIA: (I) EXCAVATE AT LEAST SIX INCHES BELOW THE BOTTOM OF CCR SURFACE IN ALL AREAS OF AP-1; (II) CONDUCT ADDITIONAL OVER-EXCAVATION AS NEEDED BENEATH THE FLOOR AREAS OF THE CONSOLIDATED LINED FOOTPRINT AND BENEATH THE BASE OF THE NEW NORTH AND SOUTH CONTAINMENT DIKES TO CONDUCT FOUNDATION IMPROVEMENTS AND PROVIDE AN 8-FT (MIN) COMPACTED SOIL BUFFER ZONE BELOW THE LINER SYSTEM; AND (III) CONDUCT ADDITIONAL EXCAVATION IN THE AREAS SOUTH AND NORTH OF THE CONSOLIDATED LINED FOOTPRINT AS NEEDED TO GRADE TO DRAIN UNDER FINAL CLOSED CONDITIONS.
 - EXCAVATION GRADES WILL BE ADJUSTED AS NECESSARY DURING CLOSURE CONSTRUCTION BASED ON APPLYING THE ABOVE CRITERIA TO THE ACTUAL FIELD-LOCATED BOTTOM OF CCR, AS WELL AS BASED ON FOUNDATION EVALUATIONS AND IMPROVEMENTS CONDUCTED IN ACCORDANCE WITH THE "FOUNDATION IMPROVEMENT PLAN" INCLUDED WITH THIS PERMIT APPLICATION.
 - EXCAVATION CONTOURS SHOWN ON THIS DRAWING ARE APPROXIMATE. ACTUAL EXCAVATION GRADES MAY EXTEND DEEPER AND SMOOTHED AS NEEDED TO FACILITATE CONSTRUCTION AND ACCOMPLISH FOUNDATION IMPROVEMENTS, FOLLOWED BY COMPACTED FILL PLACEMENT AS NECESSARY, PER NOTE 3.
 - ALONG EASTERN SIDE OF AP-1, PERMIT BOUNDARY IS ALIGNED WITH APPROXIMATE LIMIT OF AP-1, AND THUS OBLISCURED IN THIS AREA ON THIS DRAWING. REFER TO DRAWING 3 FOR THE PERMIT BOUNDARY SURVEY AND LEGAL DESCRIPTION.



REV	DATE	DESCRIPTION	DRN	APP
0	AUG. 2021	SUBMITTAL TO GA EPD	JV/KH	RB

EXCAVATION PLAN - OVERALL

PLANT BOWEN ASH POND 1 (AP-1)
CLOSURE DRAWINGS
BARTOW COUNTY, GEORGIA

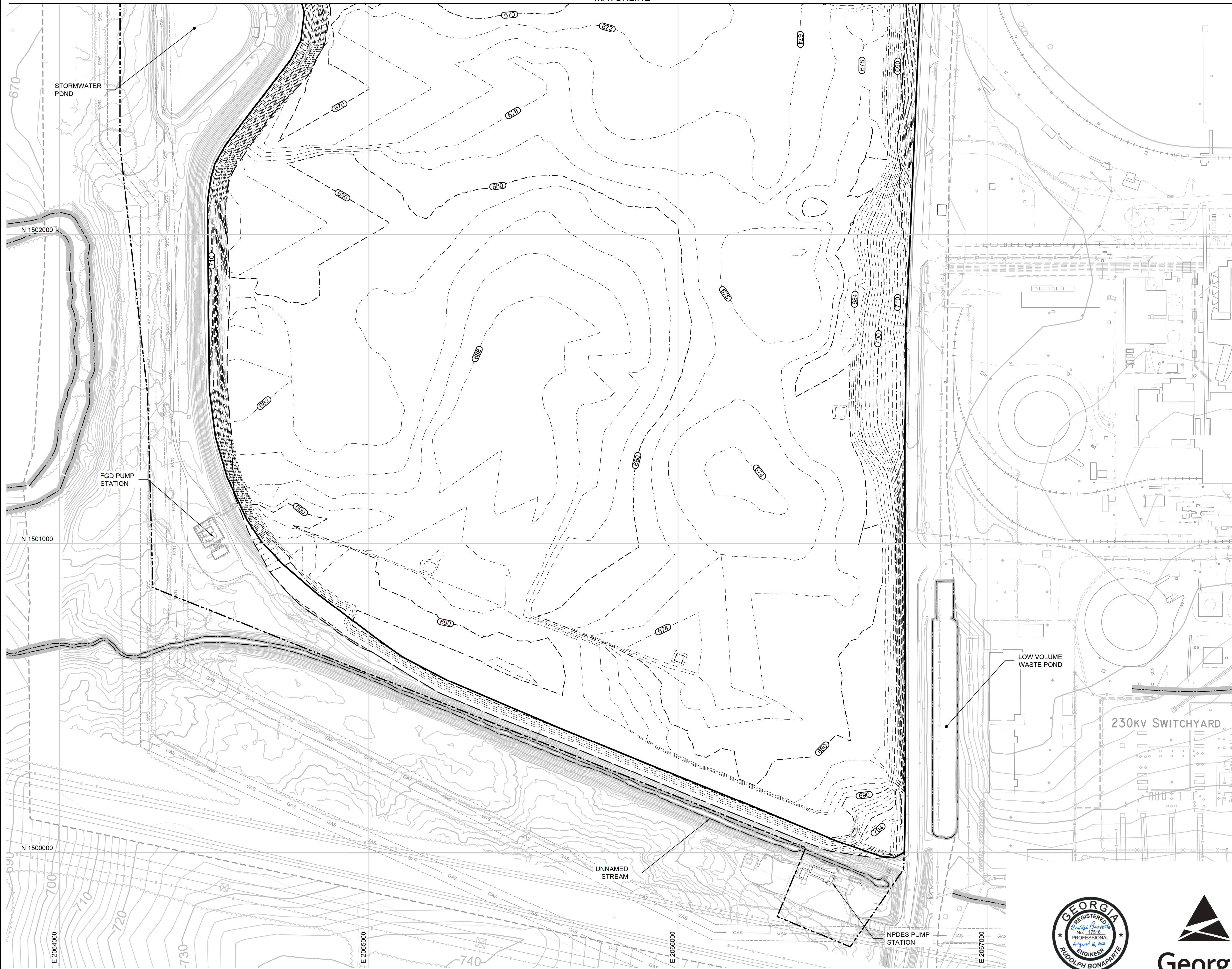
Geosyntec consultants		PHONE: 678.202.3500 WWW.GEOSYNTEC.COM
PROJ. NO. GR6601	DWG. GR6601-008	EDIT 8/16/21
SCALE 1" = 300'	DRAWING 8 OF 50	
DATE AUGUST 2021		



**PERMIT DRAWING
NOT FOR CONSTRUCTION**

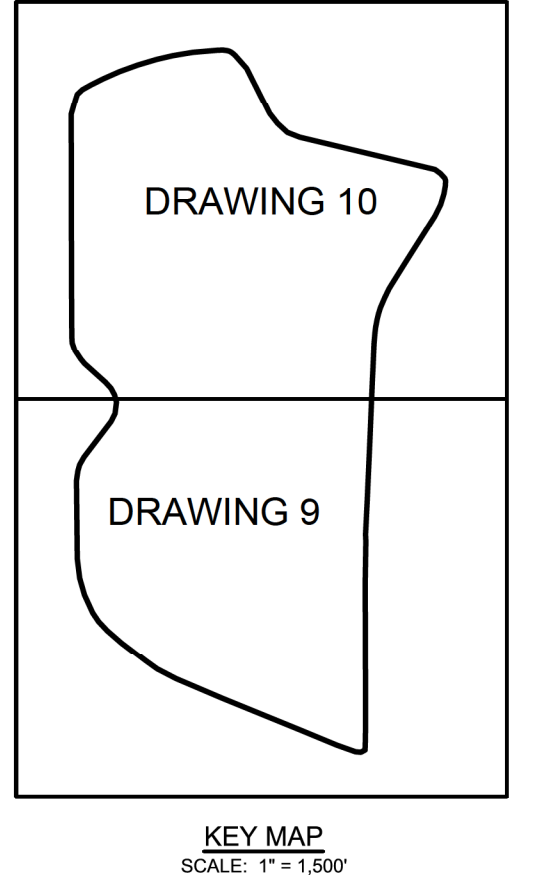
P:\CAD\PROJECTS\GEORGIA POWER\BOWEN POWER PLANT\PERMIT\ASH POND CLOSURE (GR6601)\DRAWINGS\GR6601-008

MATCHLINE

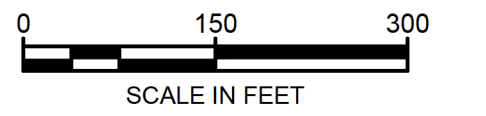


LEGEND

	EXCAVATION SURFACE ELEVATION (FEET) (NOTES 2 AND 3)
	PERMIT BOUNDARY (NOTE 6)
	APPROXIMATE EXISTING LIMIT OF AP-1 (NOTE 1)
	APPROXIMATE LIMIT OF CONSOLIDATED AREA FOUNDATION IMPROVEMENTS



- NOTES:**
- SEE DRAWING 2 FOR LEGENDS, ABBREVIATIONS, AND GENERAL SITE NOTES.
 - CONTOURS SHOWN ON THIS DRAWING WITHIN LIMITS OF AP-1 REPRESENT ESTIMATED MINIMUM BOTTOM OF EXCAVATION GRADES. CONTOURS SHOWN ON THIS DRAWING BEYOND LIMITS OF AP-1 ARE EXISTING GROUND TOPOGRAPHY.
 - EXCAVATION SURFACE IS APPROXIMATE, AND WAS DEVELOPED BASED ON THE ESTIMATED BOTTOM OF CCR AND TO MEET THE FOLLOWING CRITERIA: (I) EXCAVATE AT LEAST SIX INCHES BELOW THE BOTTOM OF CCR SURFACE IN ALL AREAS OF AP-1; (II) CONDUCT ADDITIONAL OVER-EXCAVATION AS NEEDED BENEATH THE FLOOR AREAS OF THE CONSOLIDATED LINED FOOTPRINT AND BENEATH THE BASE OF THE NEW NORTH AND SOUTH CONTAINMENT DIKES TO CONDUCT FOUNDATION IMPROVEMENTS AND PROVIDE AN 8-FT (MIN) COMPACTED SOIL BUFFER ZONE BELOW THE LINER SYSTEM; AND (III) CONDUCT ADDITIONAL EXCAVATION IN THE AREAS SOUTH AND NORTH OF THE CONSOLIDATED LINED FOOTPRINT AS NEEDED TO GRADE TO DRAIN UNDER FINAL CLOSED CONDITIONS.
 - EXCAVATION GRADES WILL BE ADJUSTED AS NECESSARY DURING CLOSURE CONSTRUCTION BASED ON APPLYING THE ABOVE CRITERIA TO THE ACTUAL FIELD-LOCATED BOTTOM OF CCR, AS WELL AS BASED ON FOUNDATION EVALUATIONS AND IMPROVEMENTS CONDUCTED IN ACCORDANCE WITH THE "FOUNDATION IMPROVEMENT PLAN" INCLUDED WITH THIS PERMIT APPLICATION.
 - EXCAVATION CONTOURS SHOWN ON THIS DRAWING ARE APPROXIMATE. ACTUAL EXCAVATION GRADES MAY EXTEND DEEPER AND BE SMOOTHED AS NEEDED TO FACILITATE CONSTRUCTION AND ACCOMPLISH FOUNDATION IMPROVEMENTS, FOLLOWED BY COMPACTED FILL PLACEMENT AS NECESSARY, PER NOTE 3.
 - ALONG EASTERN SIDE OF AP-1, PERMIT BOUNDARY IS ALIGNED WITH APPROXIMATE LIMIT OF AP-1, AND THUS OBSCURED IN THIS AREA ON THIS DRAWING. REFER TO DRAWING 3 FOR THE PERMIT BOUNDARY SURVEY AND LEGAL DESCRIPTION.



REV	DATE	DESCRIPTION	DRN	APP
0	AUG. 2021	SUBMITTAL TO GA EPD	JV/KH	RB

EXCAVATION PLAN - SOUTH AP-1

PLANT BOWEN ASH POND 1 (AP-1)
CLOSURE DRAWINGS
BARTOW COUNTY, GEORGIA

Geosyntec
consultants

1255 ROBERTS BOULEVARD, NW, SUITE 200
KENNESAW, GEORGIA 30144 USA
PHONE: 678.202.9500
WWW.GEOSYNTEC.COM

PROJ. NO.	GR6601	DWG.	GR6601-009	EDIT	8/16/21
SCALE	1" = 150'	DRAWING 9 OF 50			
DATE	AUGUST 2021				



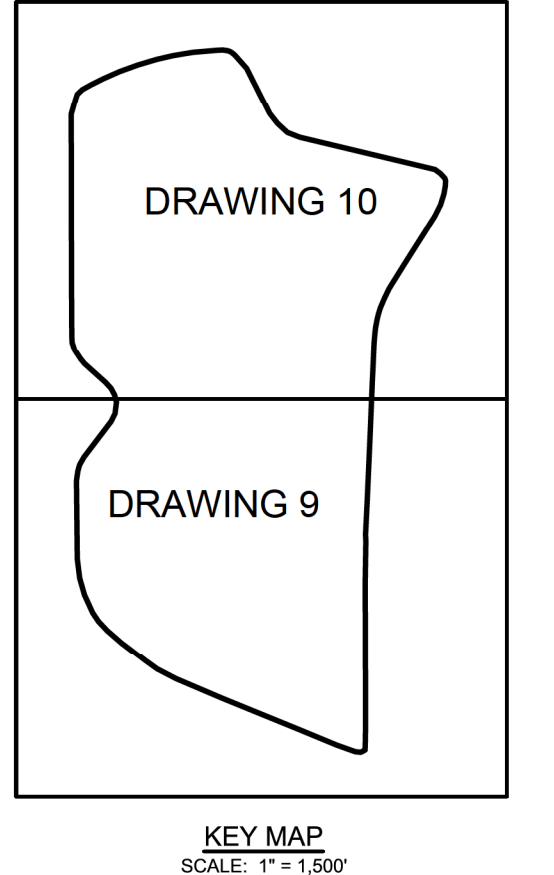
PERMIT DRAWING
NOT FOR CONSTRUCTION

P:\CAD\PROJECTS\GEORGIA POWER\BOWEN POWER PLANT\PERMIT\ASH POND CLOSURE (GR6601)\DRAWINGS\GR6601-009

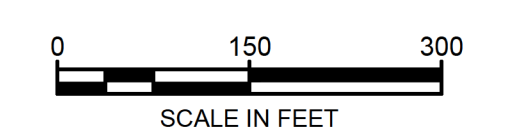


LEGEND

	EXCAVATION SURFACE ELEVATION (FEET) (NOTES 2 AND 3)
	PERMIT BOUNDARY (NOTE 6)
	APPROXIMATE EXISTING LIMIT OF AP-1 (NOTE 1)
	APPROXIMATE LIMIT OF CONSOLIDATED AREA FOUNDATION IMPROVEMENTS



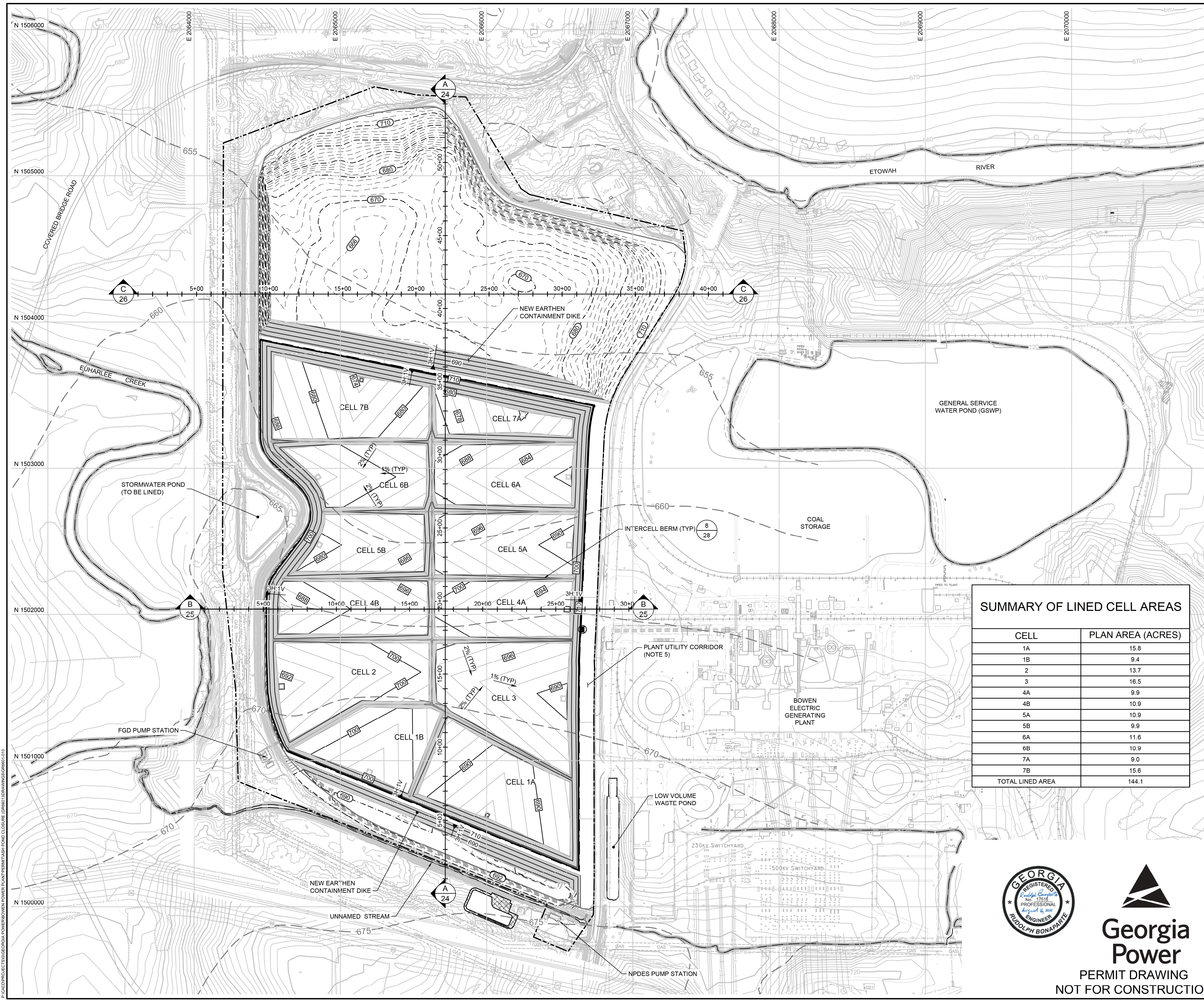
- NOTES:**
- SEE DRAWING 2 FOR LEGENDS, ABBREVIATIONS, AND GENERAL SITE NOTES.
 - CONTOURS SHOWN ON THIS DRAWING WITHIN LIMITS OF AP-1 REPRESENT ESTIMATED MINIMUM BOTTOM OF EXCAVATION GRADES. CONTOURS SHOWN ON THIS DRAWING BEYOND LIMITS OF AP-1 ARE EXISTING GROUND TOPOGRAPHY.
 - EXCAVATION SURFACE IS APPROXIMATE, AND WAS DEVELOPED BASED ON THE ESTIMATED BOTTOM OF CCR AND TO MEET THE FOLLOWING CRITERIA: (I) EXCAVATE AT LEAST SIX INCHES BELOW THE BOTTOM OF CCR SURFACE IN ALL AREAS OF AP-1; (II) CONDUCT ADDITIONAL OVER-EXCAVATION AS NEEDED BENEATH THE FLOOR AREAS OF THE CONSOLIDATED LINED FOOTPRINT AND BENEATH THE BASE OF THE NEW NORTH AND SOUTH CONTAINMENT DIKES TO CONDUCT FOUNDATION IMPROVEMENTS AND PROVIDE AN 8-FT (MIN) COMPACTED SOIL BUFFER ZONE BELOW THE LINER SYSTEM; AND (III) CONDUCT ADDITIONAL EXCAVATION IN THE AREAS SOUTH AND NORTH OF THE CONSOLIDATED LINED FOOTPRINT AS NEEDED TO GRADE TO DRAIN UNDER FINAL CLOSED CONDITIONS.
 - EXCAVATION GRADES WILL BE ADJUSTED AS NECESSARY DURING CLOSURE CONSTRUCTION BASED ON APPLYING THE ABOVE CRITERIA TO THE ACTUAL FIELD-LOCATED BOTTOM OF CCR, AS WELL AS BASED ON FOUNDATION EVALUATIONS AND IMPROVEMENTS CONDUCTED IN ACCORDANCE WITH THE "FOUNDATION IMPROVEMENT PLAN" INCLUDED WITH THIS PERMIT APPLICATION.
 - EXCAVATION CONTOURS SHOWN ON THIS DRAWING ARE APPROXIMATE. ACTUAL EXCAVATION GRADES MAY EXTEND DEEPER AND BE SMOOTHED AS NEEDED TO FACILITATE CONSTRUCTION AND ACCOMPLISH FOUNDATION IMPROVEMENTS, FOLLOWED BY COMPACTED FILL PLACEMENT AS NECESSARY, PER NOTE 3.
 - ALONG EASTERN SIDE OF AP-1, PERMIT BOUNDARY IS ALIGNED WITH APPROXIMATE LIMIT OF AP-1, AND THUS OBSCURED IN THIS AREA ON THIS DRAWING. REFER TO DRAWING 3 FOR THE PERMIT BOUNDARY SURVEY AND LEGAL DESCRIPTION.



PERMIT DRAWING
NOT FOR CONSTRUCTION

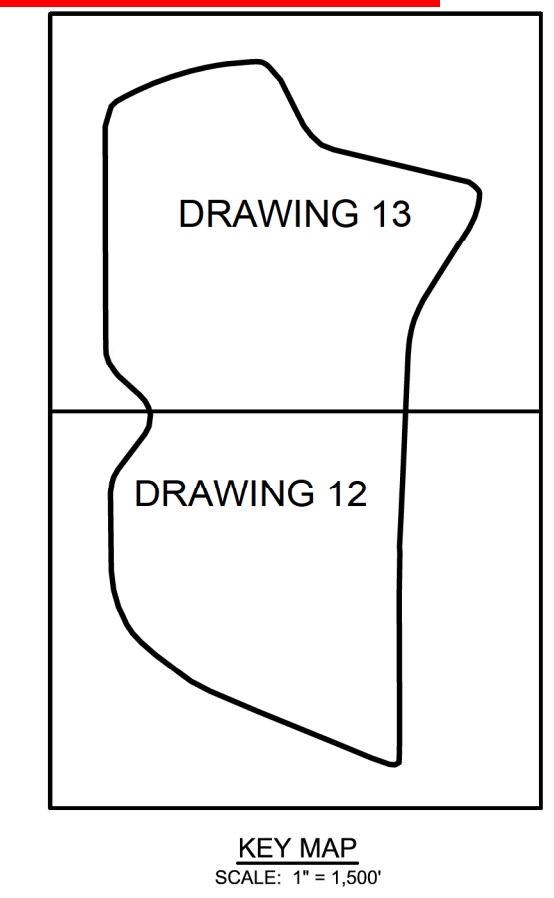
0	AUG. 2021	SUBMITTAL TO GA EPD	JV/KH	RB
REV	DATE	DESCRIPTION	DRN	APP
EXCAVATION PLAN - NORTH AP-1				
PLANT BOWEN ASH POND 1 (AP-1) CLOSURE DRAWINGS BARTOW COUNTY, GEORGIA				
Geosyntec consultants				
<small>1255 ROBERTS BOULEVARD, NW, SUITE 200 KENNESAW, GEORGIA 30144 USA</small>				
PROJ. NO.	GR6601	DWG.	GR6601-009A	EDIT
SCALE	1" = 150'	DATE	AUGUST 2021	8/16/21
				DRAWING 10 OF 50

P:\CADD\PROJECTS\GEORGIA POWER\BOWEN POWER PLANT\PERMIT\ASH POND CLOSURE (DRW) DRAWINGS\DRW10.DWG



LEGEND

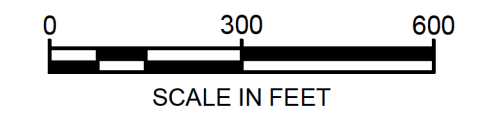
- 710 EXISTING GROUND ELEVATION (FEET) (NOTE 1)
- PERMIT BOUNDARY
- EXCAVATION SURFACE ELEVATION (FEET)
- TOP OF LINER ELEVATION (FEET)
- LIMIT OF LINER (NOTE 2)
- APPROXIMATE EXISTING LIMIT OF AP-1 (NOTE 1)
- PREDICTED POST-CLOSURE SEASONAL HIGH GROUNDWATER POTENTIOMETRIC SURFACE ELEVATION (FEET) (NOTE 1)
- TEMPORARY WWT'S PAD



- NOTES:**
- SEE DRAWING 2 FOR LEGENDS, ABBREVIATIONS, AND GENERAL SITE NOTES.
 - TOP OF LINER GRADES SHOWN ON THIS DRAWING REPRESENT THE TOP OF THE GEOMEMBRANE COMPONENT OF THE LINER SYSTEM WITHIN THE CONSOLIDATED LINED FOOTPRINT AREA. WITHIN THE REMAINDER OF AP-1 (OUTSIDE THE CONSOLIDATED LINED FOOTPRINT AREA), GRADES REPRESENT EXTERIOR NORTH AND SOUTH CONTAINMENT DIKE SLOPES, WHICH TIE-IN TO THE ESTIMATED BOTTOM OF EXCAVATION GRADES CONTOURS SHOWN ON THIS DRAWING BEYOND LIMITS OF AP-1 ARE EXISTING GROUND TOPOGRAPHY. LOW POINTS OF CELLS WILL NOT BE LOWERED WITHOUT GA EPD APPROVAL. MINOR CHANGES TO LINER GRADES SHOWN ON THIS DRAWING MAY BE MADE DURING DETAILED DESIGN (E.G., RAISED TO PROVIDE SEPARATION FROM THE PREDICTED POST-CLOSURE SEASONAL HIGH GROUNDWATER POTENTIOMETRIC SURFACE PRESENTED IN THE "HYDROGEOLOGIC ASSESSMENT REPORT (REVISION 3)" (PART B, SECTION 2 OF THIS PERMIT APPLICATION)); LINER GRADES MAY BE RAISED AS NECESSARY DURING CONSTRUCTION BASED ON CONDITIONS ENCOUNTERED.
 - CLOSURE WILL BE CONDUCTED IN PHASES, RESULTING IN PLAN TO CONSTRUCT LINED CELLS AND PLACE CCR IN ASCENDING NUMERICAL ORDER. AS NEEDED TO FACILITATE CLOSURE CONSTRUCTION TIMING AND SEQUENCING, MULTIPLE CELLS MAY BE CONSTRUCTED AND OPERATED AT A TIME. CELLS MAY ALSO BE CONSTRUCTED OUT-OF-SEQUENCE, WITH MINOR ADJUSTMENTS TO INTERCELL BOUNDARIES, OR SUBDIVIDED INTO PARTIAL CELL AREAS TO FACILITATE CLOSURE ACTIVITIES. REFER TO DRAWINGS 20 THROUGH 23 FOR THE CLOSURE PHASING PLANS.
 - REFER TO DRAWINGS 33 THROUGH 37 FOR THE LEACHATE MANAGEMENT SYSTEM PLAN AND DETAILS.
 - THE PLANT UTILITY CORRIDOR REFERS TO A 100-FT WIDE CORRIDOR IMMEDIATELY EAST OF THE CONSOLIDATED LINED AREA THAT WILL BE CONSTRUCTED IN CONJUNCTION WITH THE CLOSURE PROJECT. CORRIDOR MAY BE USED FOR PLANT-RELATED UTILITIES AND INFRASTRUCTURE.

SUMMARY OF LINED CELL AREAS

CELL	PLAN AREA (ACRES)
1A	15.8
1B	9.4
2	13.7
3	16.5
4A	9.9
4B	10.9
5A	10.9
5B	9.9
6A	11.6
6B	10.9
7A	9.0
7B	15.6
TOTAL LINED AREA	144.1



REV	DATE	DESCRIPTION	DRN	APP
0	AUG. 2021	SUBMITTAL TO GA EPD	JV/KH	RB

TOP OF LINER GRADING PLAN - OVERALL

PLANT BOWEN ASH POND 1 (AP-1)
CLOSURE DRAWINGS
BARTOW COUNTY, GEORGIA

Geosyntec consultants

1255 ROBERTS B. BOULEVARD, NW, SUITE 200
KENNESAW, GEORGIA 30144 USA
PHONE: 678.202.9500
WWW.GEOSYNTEC.COM

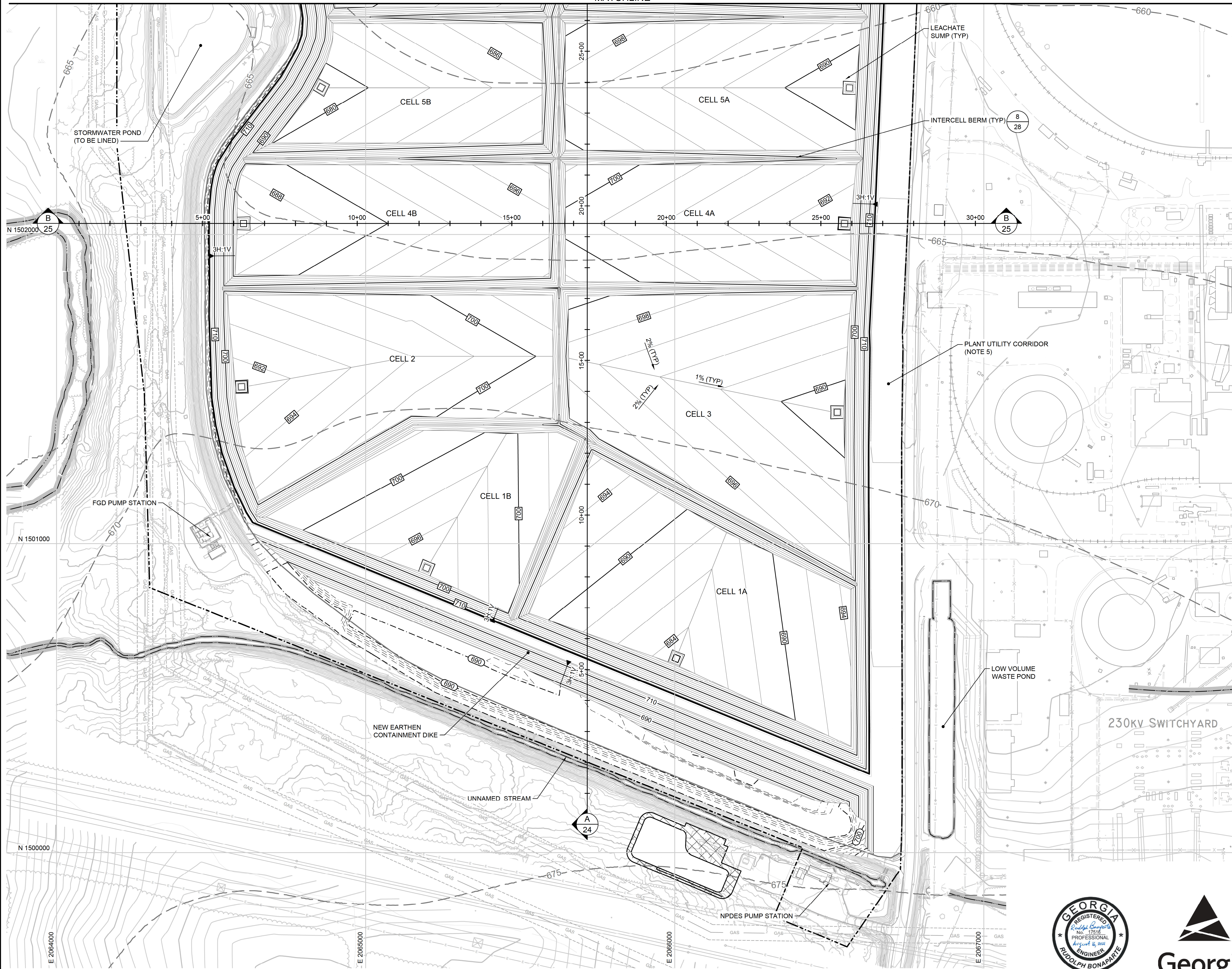
PROJ. NO.	GR6601	DWG.	GR6601-010	EDIT	8/16/21
SCALE	1" = 300'		DRAWING 11 OF 50		
DATE	AUGUST 2021				



**PERMIT DRAWING
NOT FOR CONSTRUCTION**

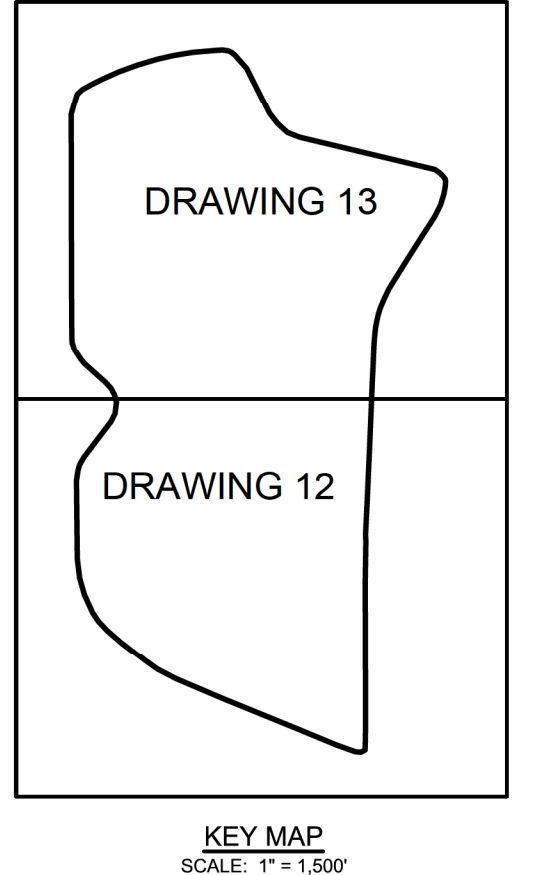
P:\CAD\PROJECTS\GEORGIA POWER\BOWEN POWER PLANT\PERMIT\ASH POND CLOSURE (GR6601)\DRAWINGS\GRID\010

MATCHLINE

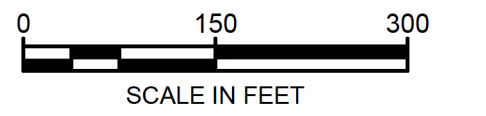


LEGEND

- 710 EXISTING GROUND ELEVATION (FEET) (NOTE 1)
- PERMIT BOUNDARY
- 670 EXCAVATION SURFACE ELEVATION (FEET)
- 680 TOP OF LINER ELEVATION (FEET)
- LIMIT OF LINER (NOTE 2)
- APPROXIMATE EXISTING LIMIT OF AP-1 (NOTE 1)
- 680- PREDICTED POST-CLOSURE SEASONAL HIGH GROUNDWATER POTENTIOMETRIC SURFACE ELEVATION (FEET) (NOTE 1)
- LEACHATE SUMP
- TEMPORARY WWTS PAD



- NOTES:
- SEE DRAWING 2 FOR LEGENDS, ABBREVIATIONS, AND GENERAL SITE NOTES.
 - TOP OF LINER GRADES SHOWN ON THIS DRAWING REPRESENT THE TOP OF THE GEOMEMBRANE COMPONENT OF THE LINER SYSTEM WITHIN THE CONSOLIDATED LINED FOOTPRINT AREA. WITHIN THE REMAINDER OF AP-1 (OUTSIDE THE CONSOLIDATED LINED FOOTPRINT AREA), GRADES REPRESENT EXTERIOR NORTH AND SOUTH CONTAINMENT DIKE SLOPES, WHICH TIE-IN TO THE ESTIMATED BOTTOM OF EXCAVATION GRADES. CONTOURS SHOWN ON THIS DRAWING BEYOND LIMITS OF AP-1 ARE EXISTING GROUND TOPOGRAPHY. LOW POINTS OF CELLS WILL NOT BE LOWERED WITHOUT GA EPD APPROVAL. MINOR CHANGES TO LINER GRADES SHOWN ON THIS DRAWING MAY BE MADE DURING DETAILED DESIGN (E.G., RAISED TO PROVIDE SEPARATION FROM THE PREDICTED POST-CLOSURE SEASONAL HIGH GROUNDWATER POTENTIOMETRIC SURFACE PRESENTED IN THE "HYDROGEOLOGIC ASSESSMENT REPORT (REVISION 3)" (PART B, SECTION 2 OF THIS PERMIT APPLICATION)). LINER GRADES MAY BE RAISED AS NECESSARY DURING CONSTRUCTION BASED ON CONDITIONS ENCOUNTERED.
 - CLOSURE WILL BE CONDUCTED IN PHASES, RESULTING IN PLAN TO CONSTRUCT LINED CELLS AND PLACE CLR IN ASCENDING NUMERICAL ORDER AS NEEDED TO FACILITATE CLOSURE CONSTRUCTION TIMING AND SEQUENCING. MULTIPLE CELLS MAY BE CONSTRUCTED AND OPERATED AT A TIME. CELLS MAY ALSO BE CONSTRUCTED OUT-OF-SEQUENCE, WITH MINOR ADJUSTMENTS TO INTERCELL BOUNDARIES, OR SUBDIVIDED INTO PARTIAL CELL AREAS TO FACILITATE CLOSURE ACTIVITIES. REFER TO DRAWINGS 20 THROUGH 23 FOR THE CLOSURE PHASING PLANS.
 - REFER TO DRAWINGS 33 THROUGH 37 FOR THE LEACHATE MANAGEMENT SYSTEM PLAN AND DETAILS.
 - THE PLANT UTILITY CORRIDOR REFERS TO A 100-FT WIDE CORRIDOR IMMEDIATELY EAST OF THE CONSOLIDATED LINED AREA THAT WILL BE CONSTRUCTED IN CONJUNCTION WITH THE CLOSURE PROJECT. CORRIDOR MAY BE USED FOR PLANT-RELATED UTILITIES AND INFRASTRUCTURE.



REV	DATE	DESCRIPTION	DRN	APP
0	AUG. 2021	SUBMITTAL TO GA EPD	JV/KH	RB

TOP OF LINER GRADING PLAN - SOUTH AP-1

PLANT BOWEN ASH POND 1 (AP-1) CLOSURE DRAWINGS BARTOW COUNTY, GEORGIA



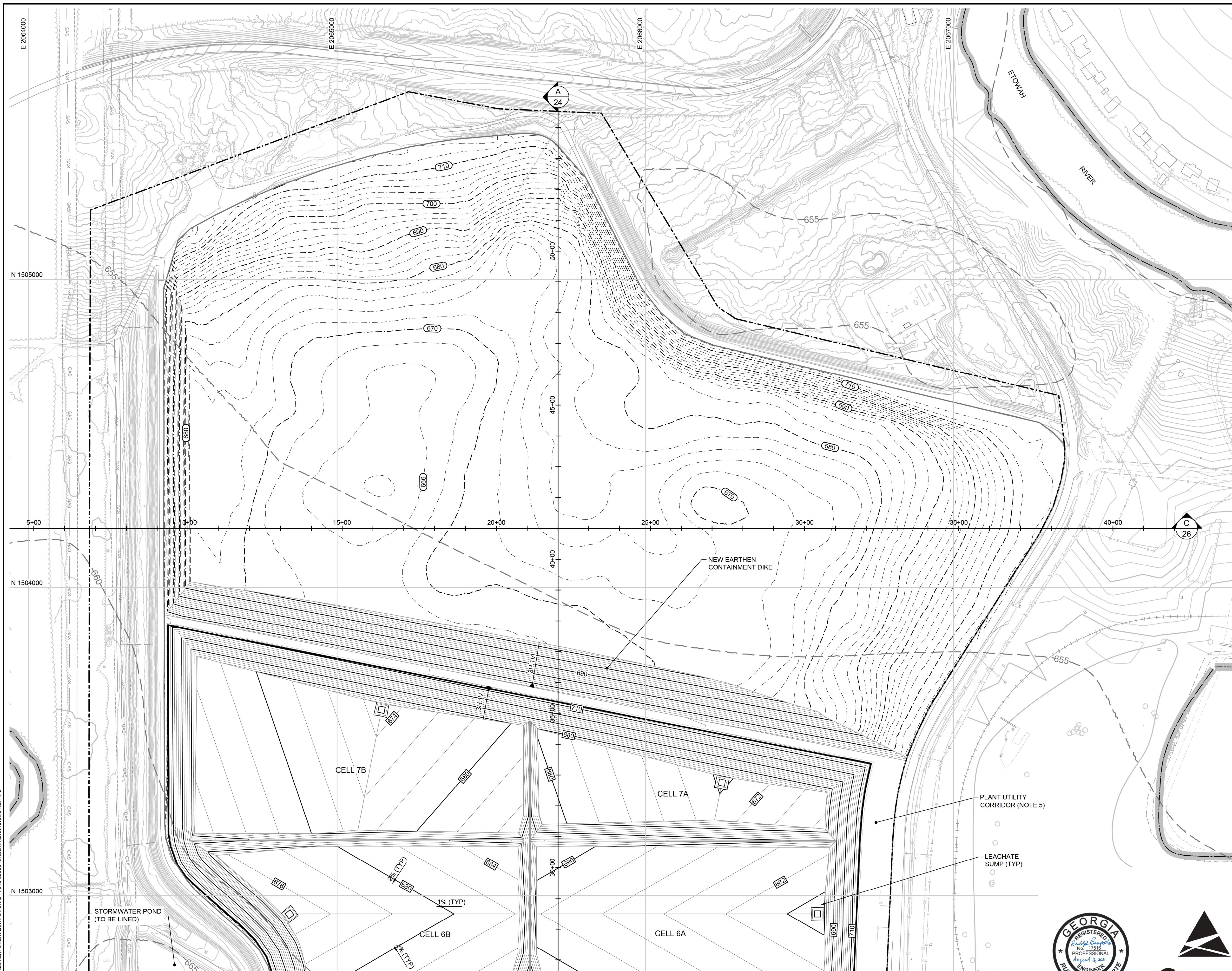
1255 ROBERTS BOULEVARD, NW, SUITE 200 KENNESAW, GEORGIA 30144 USA PHONE: 678.202.9500 WWW.GEOSYNTEC.COM

PROJ. NO.	GR6601	DWG.	GR6601-011	EDIT	8/16/21
SCALE	1" = 150'	DRAWING 12 OF 50			
DATE	AUGUST 2021				



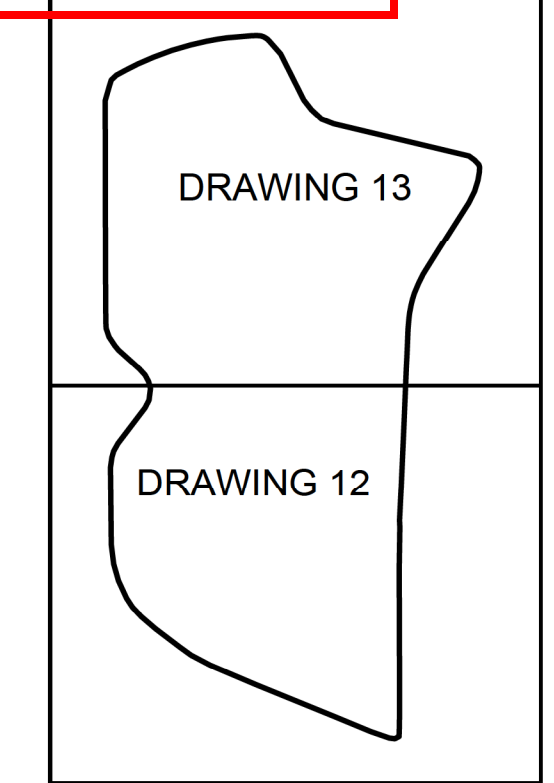
PERMIT DRAWING NOT FOR CONSTRUCTION

P:\CAD\PROJECTS\GEORGIA POWER\BOWEN POWER PLANT\PERMIT\ASH POND CLOSURE (GR6601)\DRAWINGS\GR6601-011



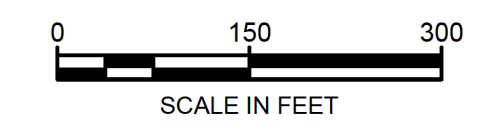
LEGEND

	710	EXISTING GROUND ELEVATION (FEET) (NOTE 1)
		PERMIT BOUNDARY
	670	EXCAVATION SURFACE ELEVATION (FEET)
	680	TOP OF LINER ELEVATION (FEET)
		LIMIT OF RETROFIT LINER
		APPROXIMATE EXISTING LIMIT OF AP-1 (NOTE 1)
	680	PREDICTED POST-CLOSURE SEASONAL HIGH GROUNDWATER POTENTIOMETRIC SURFACE ELEVATION (FEET) (NOTE 1)
		LEACHATE SUMP



KEY MAP
SCALE: 1" = 1,500'

- NOTES:
- SEE DRAWING 2 FOR LEGENDS, ABBREVIATIONS, AND GENERAL SITE NOTES.
 - TOP OF LINER GRADES SHOWN ON THIS DRAWING REPRESENT THE TOP OF THE GEOMEMBRANE COMPONENT OF THE LINER SYSTEM WITHIN THE CONSOLIDATED LINED FOOTPRINT AREA. WITHIN THE REMAINDER OF AP-1 (OUTSIDE THE CONSOLIDATED LINED FOOTPRINT AREA), GRADES REPRESENT EXTERIOR NORTH AND SOUTH CONTAINMENT DIKE SLOPES, WHICH TIE-IN TO THE ESTIMATED BOTTOM OF EXCAVATION GRADES. CONTOURS SHOWN ON THIS DRAWING BEYOND LIMITS OF AP-1 ARE EXISTING GROUND TOPOGRAPHY. LOW POINTS OF CELLS WILL NOT BE LOWERED WITHOUT GA EPD APPROVAL. MINOR CHANGES TO LINER GRADES SHOWN ON THIS DRAWING MAY BE MADE DURING DETAILED DESIGN (E.G., RAISED TO PROVIDE SEPARATION FROM THE PREDICTED POST-CLOSURE SEASONAL HIGH GROUNDWATER POTENTIOMETRIC SURFACE PRESENTED IN THE "HYDROGEOLOGIC ASSESSMENT REPORT (REVISION 3)" (PART B, SECTION 2 OF THIS PERMIT APPLICATION)). LINER GRADES MAY BE RAISED AS NECESSARY DURING CONSTRUCTION BASED ON CONDITIONS ENCOUNTERED.
 - CLOSURE WILL BE CONDUCTED IN PHASES, RESULTING IN PLAN TO CONSTRUCT LINED CELLS AND PLACE COR IN ASCENDING NUMERICAL ORDER, AS NEEDED TO FACILITATE CLOSURE CONSTRUCTION TIMING AND SEQUENCING. MULTIPLE CELLS MAY BE CONSTRUCTED AND OPERATED AT A TIME. CELLS MAY ALSO BE CONSTRUCTED OUT-OF-SEQUENCE, WITH MINOR ADJUSTMENTS TO INTERCELL BOUNDARIES, OR SUBDIVIDED INTO PARTIAL CELL AREAS TO FACILITATE CLOSURE ACTIVITIES. REFER TO DRAWINGS 20 THROUGH 23 FOR THE CLOSURE PHASING PLANS.
 - REFER TO DRAWINGS 33 THROUGH 37 FOR THE LEACHATE MANAGEMENT SYSTEM PLAN AND DETAILS.
 - THE PLANT UTILITY CORRIDOR REFERS TO A 100-FT WIDE CORRIDOR IMMEDIATELY EAST OF THE CONSOLIDATED LINED AREA THAT WILL BE CONSTRUCTED IN CONJUNCTION WITH THE CLOSURE PROJECT. CORRIDOR MAY BE USED FOR PLANT-RELATED UTILITIES AND INFRASTRUCTURE.



REV	DATE	DESCRIPTION	DRN	APP
0	AUG. 2021	SUBMITTAL TO GA EPD	JV/KH	RB

TOP OF LINER GRADING PLAN - NORTH AP-1

PLANT BOWEN ASH POND 1 (AP-1)
CLOSURE DRAWINGS
BARTOW COUNTY, GEORGIA



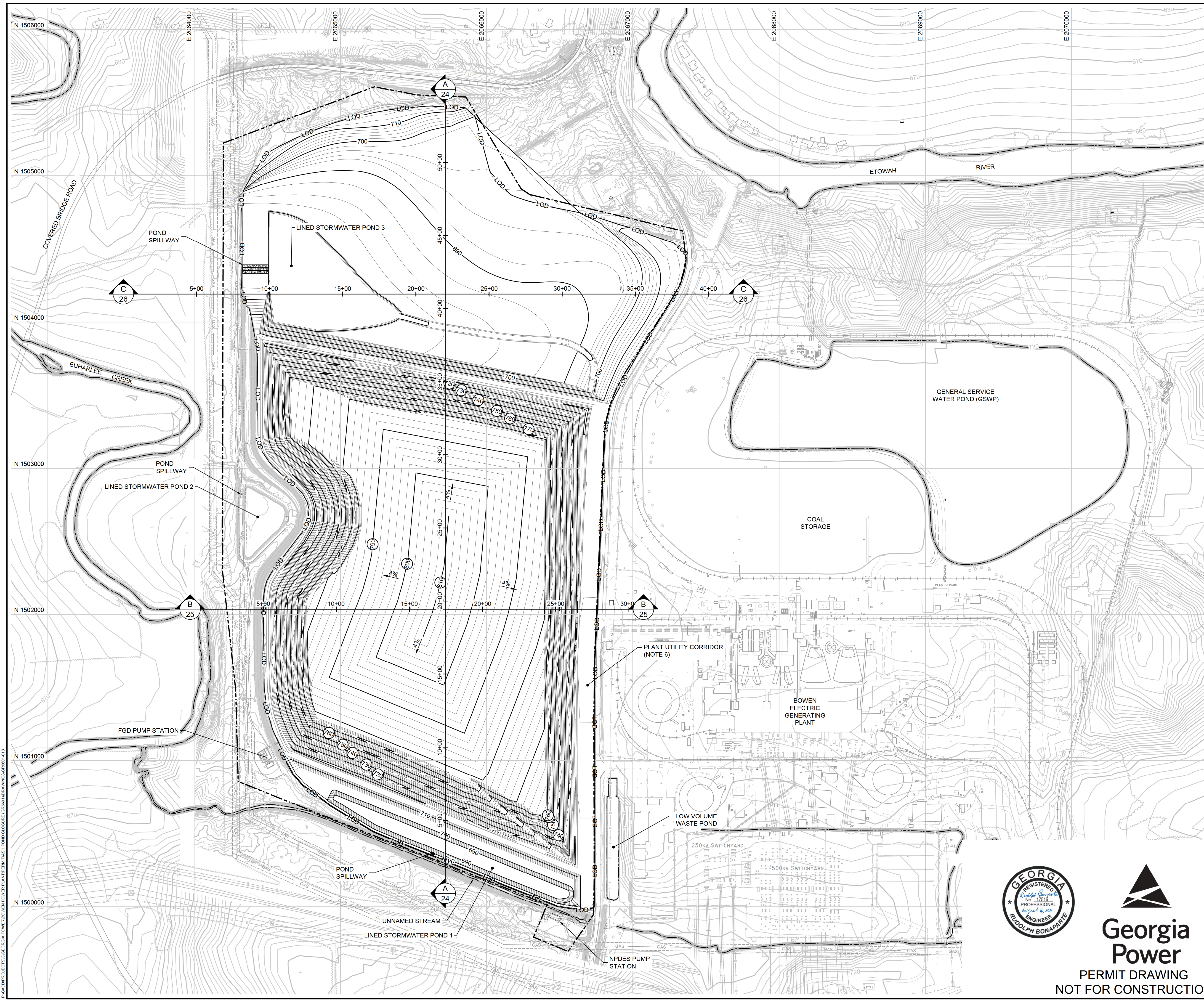
1255 ROBERTS BOULEVARD, NW, SUITE 200
KENNESAW, GEORGIA 30144 USA
PHONE: 678.202.9500
WWW.GEOSYNTEC.COM

PROJ. NO.	GR6601	DWG.	GR6601-012	EDIT	8/16/21
SCALE	1" = 150'	DRAWING 13 OF 50			
DATE	AUGUST 2021				



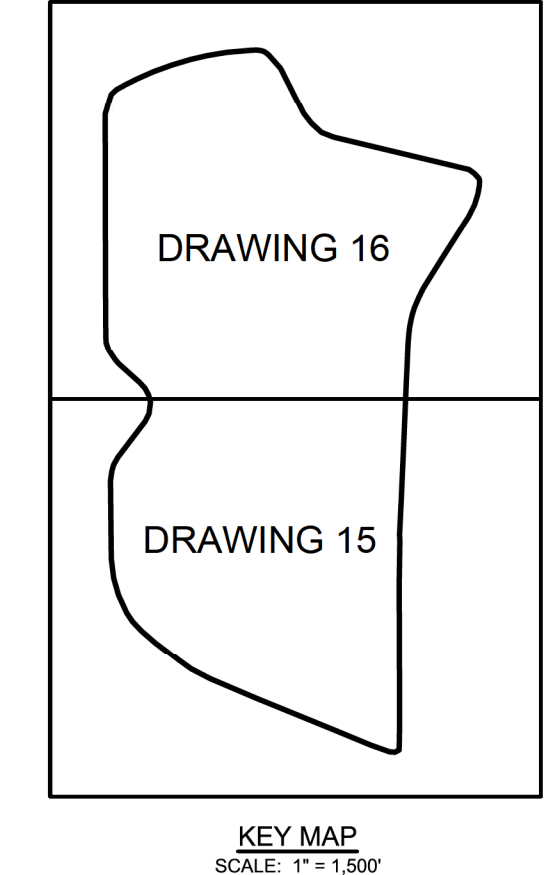
PERMIT DRAWING
NOT FOR CONSTRUCTION

P:\CAD\PROJECTS\GEORGIA POWER\BOWEN ASH POND CLOSURE (GR6601)\DRAWINGS\GR6601-012

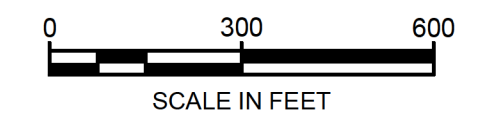


LEGEND

	670	FINISHED GROUND ELEVATION (FEET)
		PERMIT BOUNDARY
	770	TOP OF CCR ELEVATION FOR SOIL-GEOSYNTHETIC COMPOSITE COVER (FEET)
	LOD	LIMIT OF DISTURBANCE



- NOTES:**
- SEE DRAWING 2 FOR LEGENDS, ABBREVIATIONS, AND GENERAL SITE NOTES.
 - TOP OF CCR GRADES SHOWN ON THIS DRAWING REPRESENT THE TOP OF CCR ELEVATIONS FOR THE SOIL-GEOSYNTHETIC COMPOSITE FINAL COVER OPTION. BEYOND THE FINAL COVER LIMITS, PROPOSED FINISHED GRADES ARE SHOWN, WHICH TIE-IN TO EXISTING GROUND TOPOGRAPHY AT THE LIMIT OF DISTURBANCE. SEE DRAWING 2, GENERAL SITE NOTE 19.
 - REFER TO DRAWINGS 20 THROUGH 23 FOR THE CLOSURE PHASING PLANS.
 - REFER TO DRAWINGS 38 THROUGH 49 FOR THE STORMWATER MANAGEMENT SYSTEM AND EROSION AND SEDIMENT CONTROL PLAN AND DETAILS.
 - FOR CLARITY, FINAL CLOSURE STORMWATER MANAGEMENT FEATURES ARE NOT SHOWN ON THIS DRAWING. REFER TO DRAWING 38 FOR A DRAWING SHOWING THE LAYOUT PLAN AND IDENTIFICATION OF THESE FEATURES.
 - THE PLANT UTILITY CORRIDOR REFERS TO A 100-FT WIDE CORRIDOR IMMEDIATELY EAST OF THE CONSOLIDATED LINED AREA THAT WILL BE CONSTRUCTED IN CONJUNCTION WITH THE CLOSURE PROJECT. CORRIDOR MAY BE USED FOR PLANT-RELATED UTILITIES AND INFRASTRUCTURE.
 - IN ADDITION TO PERMANENT STORMWATER PONDS SHOWN, TEMPORARY LINED STORMWATER PONDS WILL BE UTILIZED DURING CONSTRUCTION AS NEEDED.



REV	DATE	DESCRIPTION	DRN	APP
0	AUG. 2021	SUBMITTAL TO GA EPD	JV/KH	RB

TOP OF CCR GRADING PLAN - OVERALL

PLANT BOWEN ASH POND 1 (AP-1)
CLOSURE DRAWINGS
BARTOW COUNTY, GEORGIA



1255 ROBERTS BOULEVARD, NW, SUITE 200
KENNESAW, GEORGIA 30144 USA
PHONE: 678.202.9500
WWW.GEOSYNTEC.COM

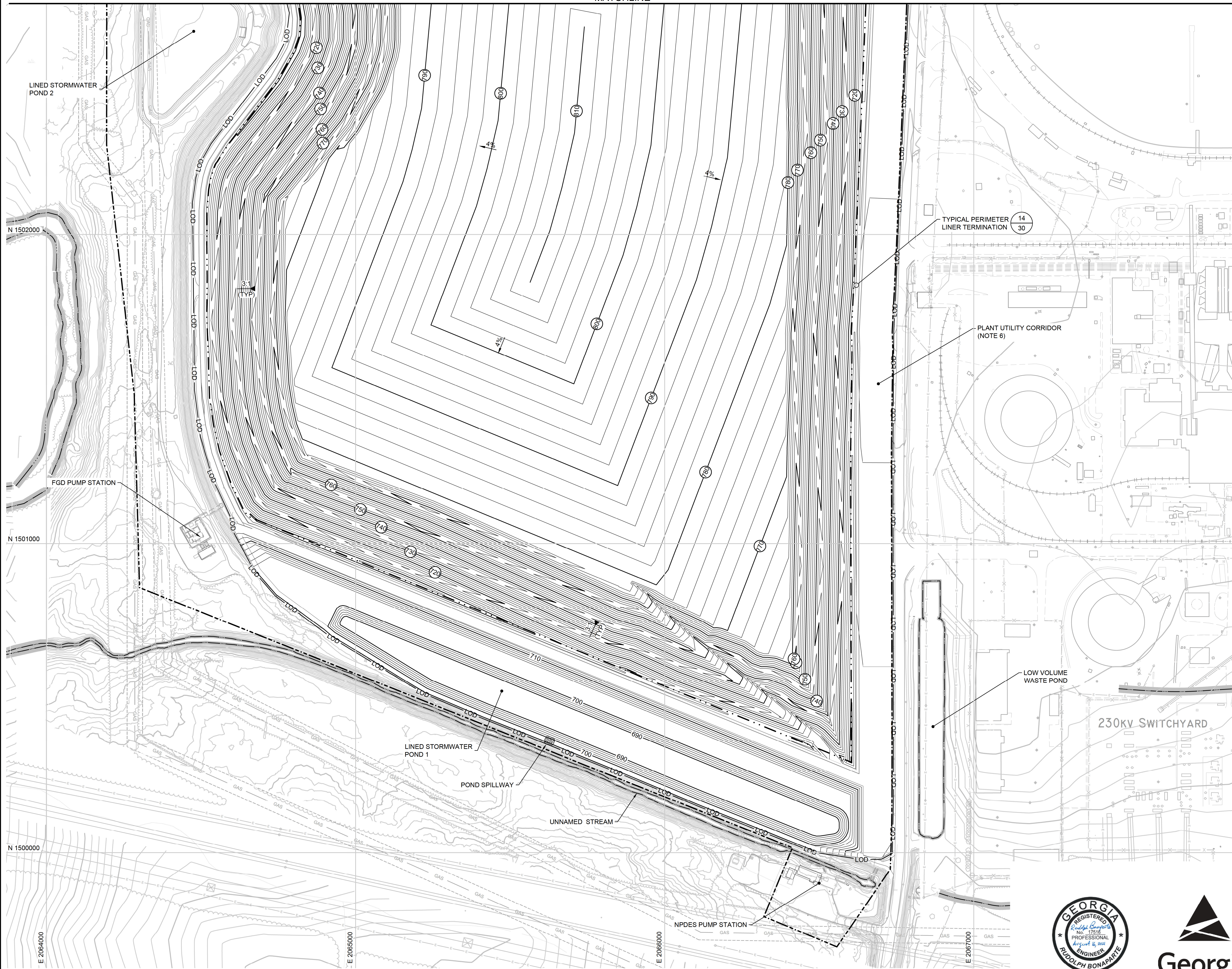
PROJ. NO.	GR6601	DWG.	GR6601-013	EDIT	8/16/21
SCALE	1" = 300'	DRAWING 14 OF 50			
DATE	AUGUST 2021				



PERMIT DRAWING
NOT FOR CONSTRUCTION

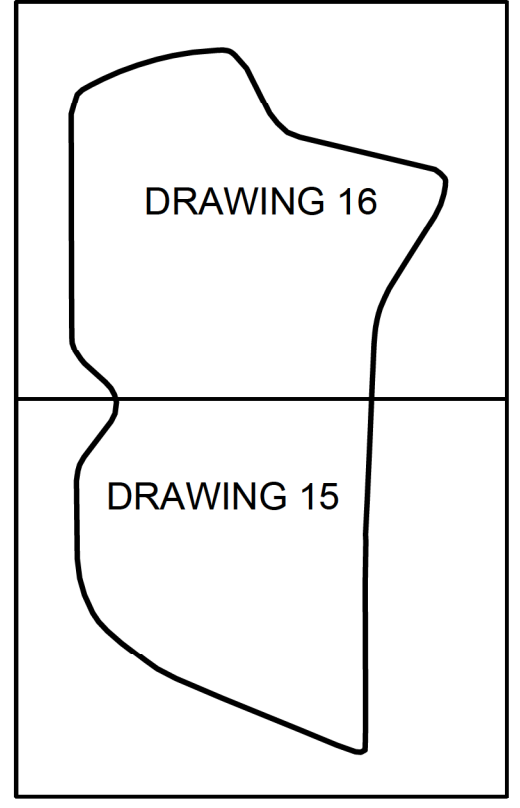
P:\CAD\PROJECTS\GEORGIA POWER\BOWEN POWER PLANT\PERMIT\ASH POND CLOSURE (GR6601)\DRAWINGS\GR6601-013

MATCHLINE



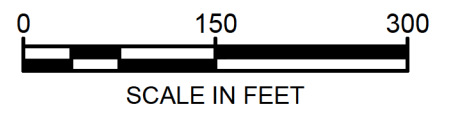
LEGEND

- 670 FINISHED GROUND ELEVATION (FEET)
- 770 TOP OF CCR ELEVATION FOR SOIL-GEOSYNTHETIC COMPOSITE COVER (FEET)
- PERMIT BOUNDARY
- LOD LIMIT OF DISTURBANCE
- FINAL LIMIT OF CCR



NOTES:

1. SEE DRAWING 2 FOR LEGENDS, ABBREVIATIONS, AND GENERAL SITE NOTES.
2. TOP OF CCR GRADES SHOWN ON THIS DRAWING REPRESENT THE TOP OF CCR ELEVATIONS FOR THE SOIL-GEOSYNTHETIC COMPOSITE FINAL COVER OPTION. BEYOND THE FINAL COVER LIMITS, PROPOSED FINISHED GRADES ARE SHOWN, WHICH TIE-IN TO EXISTING GROUND TOPOGRAPHY AT THE LIMIT OF DISTURBANCE. SEE DRAWING 2, GENERAL SITE NOTE 19.
3. REFER TO DRAWINGS 20 THROUGH 23 FOR THE CLOSURE PHASING PLANS.
4. REFER TO DRAWINGS 38 THROUGH 49 FOR THE STORMWATER MANAGEMENT SYSTEM AND EROSION AND SEDIMENT CONTROL PLAN AND DETAILS.
5. FOR CLARITY, FINAL CLOSURE STORMWATER MANAGEMENT FEATURES ARE NOT SHOWN ON THIS DRAWING. REFER TO DRAWING 38 FOR A DRAWING SHOWING THE LAYOUT PLAN AND IDENTIFICATION OF THESE FEATURES.
6. THE PLANT UTILITY CORRIDOR REFERS TO A 100-FT WIDE CORRIDOR IMMEDIATELY EAST OF THE CONSOLIDATED LINED AREA THAT WILL BE CONSTRUCTED IN CONJUNCTION WITH THE CLOSURE PROJECT. CORRIDOR MAY BE USED FOR PLANT-RELATED UTILITIES AND INFRASTRUCTURE.
7. IN ADDITION TO PERMANENT STORMWATER PONDS SHOWN, TEMPORARY LINED STORMWATER PONDS WILL BE UTILIZED DURING CONSTRUCTION AS NEEDED.



REV	DATE	DESCRIPTION	DRN	APP
0	AUG. 2021	SUBMITTAL TO GA EPD	JV/KH	RB

TOP OF CCR GRADING PLAN - SOUTH

PLANT BOWEN ASH POND 1 (AP-1)
CLOSURE DRAWINGS
BARTOW COUNTY, GEORGIA



1255 ROBERTS BOULEVARD, NW, SUITE 200
KENNESAW, GEORGIA 30144 USA
PHONE: 678.202.9500
WWW.GEOSYNTEC.COM

PROJ. NO.	GR6601	DWG.	GR6601-014	EDIT	8/16/21
SCALE	1" = 150'	DRAWING 15 OF 50			
DATE	AUGUST 2021				



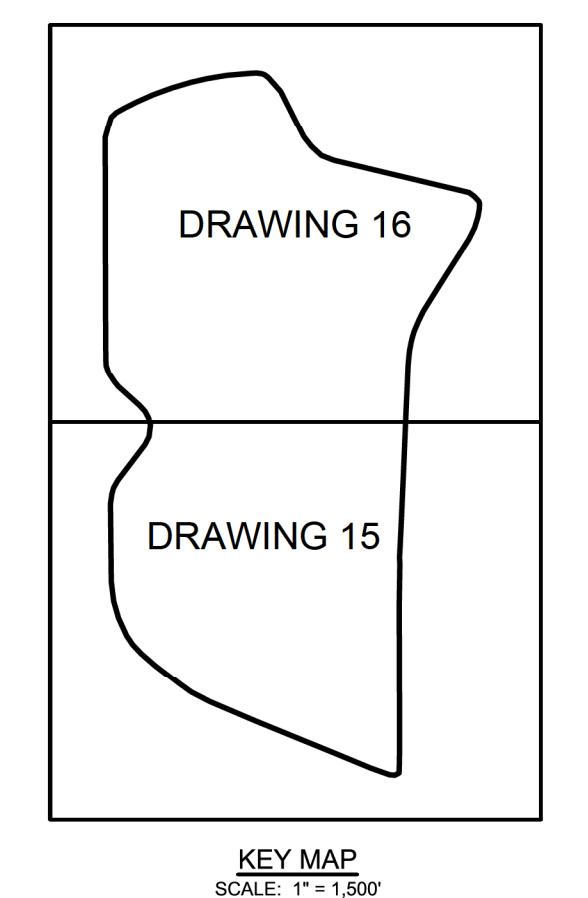
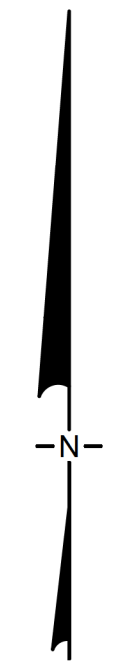
PERMIT DRAWING
NOT FOR CONSTRUCTION

P:\CAD\PROJECTS\GEORGIA POWER\BOWEN POWER PLANT\PERMIT\ASH POND CLOSURE (GR6601)\DRAWINGS\GR6601-014

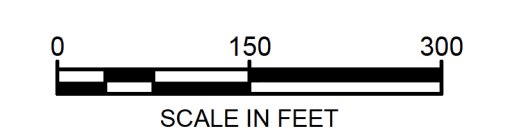


LEGEND

	670	FINISHED GROUND ELEVATION (FEET)
	70	TOP OF CCR ELEVATION FOR SOIL-GEOSYNTHETIC COMPOSITE COVER (FEET)
		PERMIT BOUNDARY
		LIMIT OF DISTURBANCE
		FINAL LIMIT OF CCR



- NOTES:
- SEE DRAWING 2 FOR LEGENDS, ABBREVIATIONS, AND GENERAL SITE NOTES.
 - TOP OF CCR GRADES SHOWN ON THIS DRAWING REPRESENT THE TOP OF CCR ELEVATIONS FOR THE SOIL-GEOSYNTHETIC COMPOSITE FINAL COVER OPTION. BEYOND THE FINAL COVER LIMITS, PROPOSED FINISHED GRADES ARE SHOWN, WHICH TIE-IN TO EXISTING GROUND TOPOGRAPHY AT THE LIMIT OF DISTURBANCE. SEE DRAWING 2, GENERAL SITE NOTE 19.
 - REFER TO DRAWINGS 20 THROUGH 23 FOR THE CLOSURE PHASING PLANS.
 - REFER TO DRAWINGS 38 THROUGH 49 FOR THE STORMWATER MANAGEMENT SYSTEM AND EROSION AND SEDIMENT CONTROL PLAN AND DETAILS.
 - FOR CLARITY, FINAL CLOSURE STORMWATER MANAGEMENT FEATURES ARE NOT SHOWN ON THIS DRAWING. REFER TO DRAWING 38 FOR A DRAWING SHOWING THE LAYOUT PLAN AND IDENTIFICATION OF THESE FEATURES.
 - THE PLANT UTILITY CORRIDOR REFERS TO A 100-FT WIDE CORRIDOR IMMEDIATELY EAST OF THE CONSOLIDATED LINED AREA THAT WILL BE CONSTRUCTED IN CONJUNCTION WITH THE CLOSURE PROJECT. CORRIDOR MAY BE USED FOR PLANT-RELATED UTILITIES AND INFRASTRUCTURE.
 - IN ADDITION TO PERMANENT STORMWATER PONDS SHOWN, TEMPORARY LINED STORMWATER PONDS WILL BE UTILIZED DURING CONSTRUCTION AS NEEDED.



0	AUG. 2021	SUBMITTAL TO GA EPD	JV/KH	RB
REV	DATE	DESCRIPTION	DRN	APP

TOP OF CCR GRADING PLAN - NORTH

PLANT BOWEN ASH POND 1 (AP-1)
CLOSURE DRAWINGS
BARTOW COUNTY, GEORGIA

Geosyntec
consultants

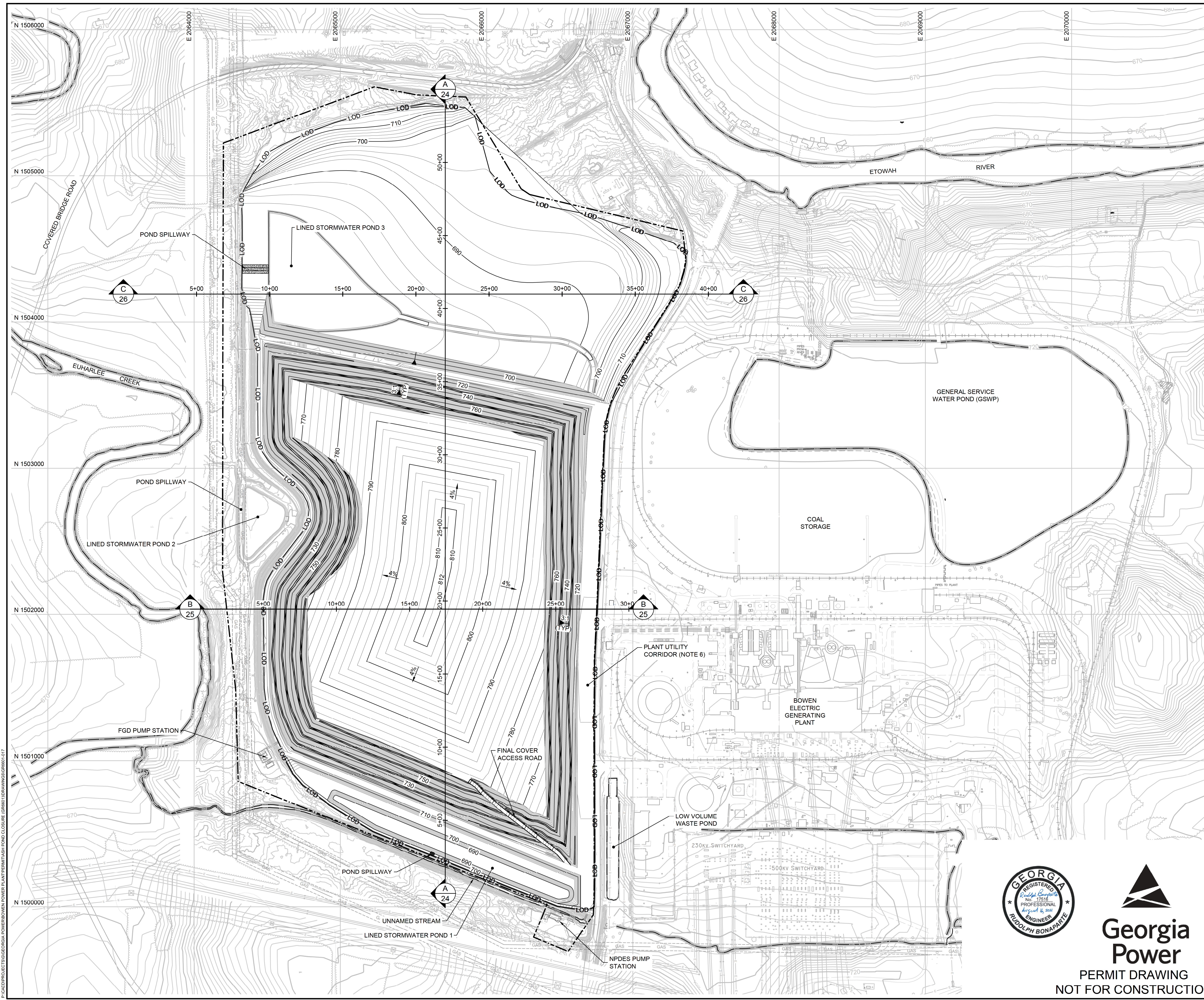
1255 ROBERTS BOULEVARD, NW, SUITE 200
KENNESAW, GEORGIA 30144 USA
PHONE: 678.202.9500
WWW.GEOSYNTEC.COM

PROJ. NO.	GR6601	DWG.	GR6601-015	EDIT	8/16/21
SCALE	1" = 150'	DRAWING 16 OF 50			
DATE	AUGUST 2021				



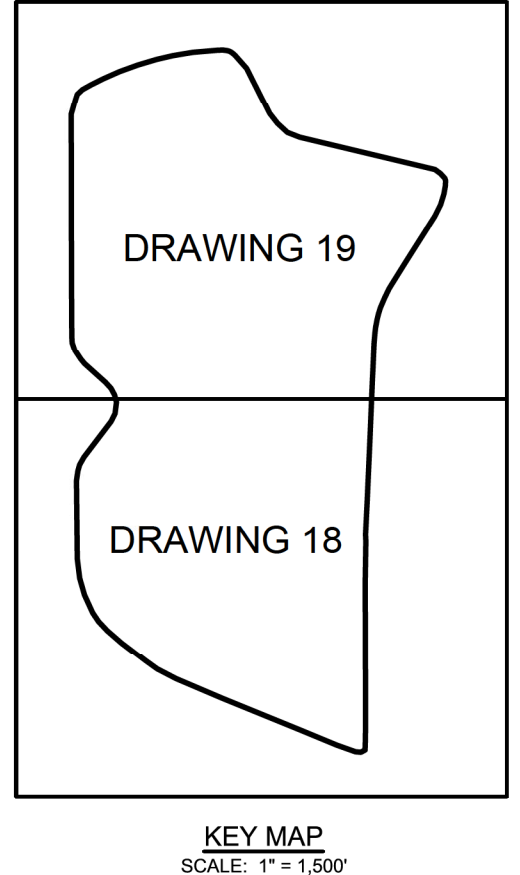
PERMIT DRAWING
NOT FOR CONSTRUCTION

P:\CAD\PROJECTS\GEORGIA POWER\BOWEN POWER PLANT\PERMIT\ASH POND CLOSURE (GR6601)\DRAWINGS\DRW01-015

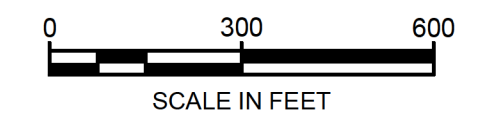


LEGEND

— 670 —	TOP OF FINAL COVER SYSTEM / TOP OF CCR FOR ALTERNATIVE COVER SYSTEM (CLOSURETURF® COVER) / FINISHED GRADE ELEVATION (FEET)
- - - - -	PERMIT BOUNDARY
— LOD —	LIMIT OF DISTURBANCE
- · - · - ·	FINAL LIMIT OF CCR



- NOTES:**
- SEE DRAWING 2 FOR LEGENDS, ABBREVIATIONS, AND GENERAL SITE NOTES.
 - TOP OF FINAL COVER GRADES SHOWN ON THIS DRAWING REPRESENT BOTH THE TOP OF SOIL-GEOSYNTHETIC COMPOSITE FINAL COVER SYSTEM AND THE TOP OF CLOSURETURF® ALTERNATIVE FINAL COVER SYSTEM ELEVATIONS WITHIN THE FINAL COVER LIMITS. THESE GRADES ALSO REPRESENT THE TOP OF CCR ELEVATIONS FOR THE CLOSURETURF® ALTERNATIVE FINAL COVER SYSTEM. BEYOND THE FINAL COVER LIMITS, PROPOSED FINISHED GRADES ARE SHOWN, WHICH TIE-IN TO EXISTING GROUND TOPOGRAPHY AT THE LIMIT OF DISTURBANCE. SEE DRAWING 2, GENERAL SITE NOTE 19. BASED ON FIELD CONDITIONS ENCOUNTERED, THE ELEVATION OF THE FINAL COVER MAY VARY, PROVIDED THAT THE ENGINEERING DESIGN CRITERIA ARE MET. THE MAXIMUM FINAL COVER ELEVATION WILL NOT BE EXCEEDED WITHOUT GA EPD AUTHORIZATION.
 - REFER TO DRAWINGS 20 THROUGH 23 FOR THE CLOSURE PHASING PLANS.
 - REFER TO DRAWINGS 38 THROUGH 49 FOR THE STORMWATER MANAGEMENT SYSTEM AND EROSION AND SEDIMENT CONTROL PLAN AND DETAILS.
 - FOR CLARITY, FINAL CLOSURE STORMWATER MANAGEMENT FEATURES ARE NOT SHOWN ON THIS DRAWING. REFER TO DRAWING 38 FOR A DRAWING SHOWING THE LAYOUT PLAN AND IDENTIFICATION OF THESE FEATURES.
 - THE PLANT UTILITY CORRIDOR REFERS TO A 100-FT WIDE CORRIDOR IMMEDIATELY EAST OF THE CONSOLIDATED LINED AREA THAT WILL BE CONSTRUCTED IN CONJUNCTION WITH THE CLOSURE PROJECT. CORRIDOR MAY BE USED FOR PLANT-RELATED UTILITIES AND INFRASTRUCTURE.
 - IN ADDITION TO PERMANENT STORMWATER PONDS SHOWN, TEMPORARY LINED STORMWATER PONDS WILL BE UTILIZED DURING CONSTRUCTION AS NEEDED.



REV	DATE	DESCRIPTION	DRN	APP
0	AUG. 2021	SUBMITTAL TO GA EPD	JV/KH	RB

FINAL CLOSURE GRADING PLAN - OVERALL

PLANT BOWEN ASH POND 1 (AP-1)
CLOSURE DRAWINGS
BARTOW COUNTY, GEORGIA

Geosyntec
consultants

1255 ROBERTS BOULEVARD, NW, SUITE 200
KENNESAW, GEORGIA 30144 USA
PHONE: 678.202.9500
WWW.GEOSYNTEC.COM

PROJ. NO.	GR6601	DWG.	GR6601-017	EDIT	8/16/21
SCALE	1" = 300'		DRAWING 17 OF 50		
DATE	AUGUST 2021				



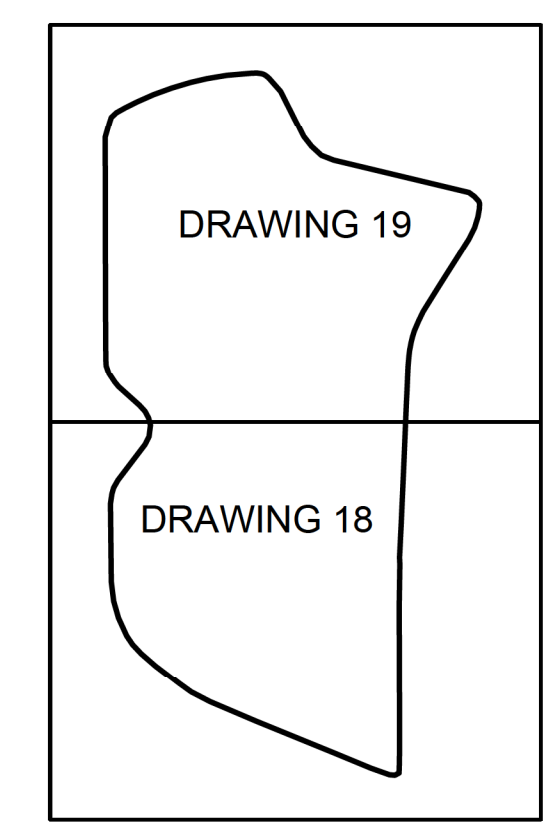
Georgia Power
PERMIT DRAWING
NOT FOR CONSTRUCTION

P:\CAD\PROJECTS\GEORGIA POWER\BOWEN POWER PLANT\PERMIT\ASH POND CLOSURE (GR6601)\DRAWINGS\GR6601-017

MATCHLINE

LEGEND

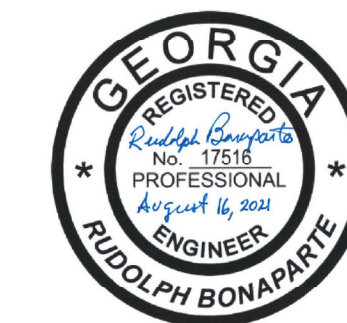
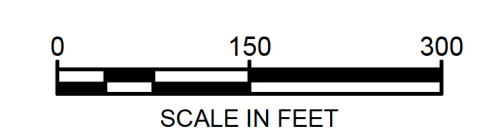
- 670 — TOP OF FINAL COVER SYSTEM / TOP OF CCR FOR ALTERNATIVE COVER SYSTEM (CLOSURETURF® COVER) / FINISHED GRADE ELEVATION (FEET)
- - - - PERMIT BOUNDARY
- LOD — LIMIT OF DISTURBANCE
- · - · - · FINAL LIMIT OF CCR



KEY MAP SCALE: 1" = 1,500'

NOTES:

1. SEE DRAWING 2 FOR LEGENDS, ABBREVIATIONS, AND GENERAL SITE NOTES.
2. TOP OF FINAL COVER GRADES SHOWN ON THIS DRAWING REPRESENT BOTH THE TOP OF SOIL-GEOSYNTHETIC COMPOSITE FINAL COVER SYSTEM AND THE TOP OF CLOSURETURF® ALTERNATIVE FINAL COVER SYSTEM ELEVATIONS WITHIN THE FINAL COVER LIMITS. THESE GRADES ALSO REPRESENT THE TOP OF CCR ELEVATIONS FOR THE CLOSURETURF® ALTERNATIVE FINAL COVER SYSTEM. BEYOND THE FINAL COVER LIMITS, PROPOSED FINISHED GRADES ARE SHOWN, WHICH TIE-IN TO EXISTING GROUND TOPOGRAPHY AT THE LIMIT OF DISTURBANCE. SEE DRAWING 2, GENERAL SITE NOTE 19. BASED ON FIELD CONDITIONS ENCOUNTERED, THE ELEVATION OF THE FINAL COVER MAY VARY, PROVIDED THAT THE ENGINEERING DESIGN CRITERIA ARE MET. THE MAXIMUM FINAL COVER ELEVATION WILL NOT BE EXCEEDED WITHOUT GA EPD AUTHORIZATION.
3. REFER TO DRAWINGS 20 THROUGH 23 FOR THE CLOSURE PHASING PLANS.
4. REFER TO DRAWINGS 38 THROUGH 49 FOR THE STORMWATER MANAGEMENT SYSTEM AND EROSION AND SEDIMENT CONTROL PLAN AND DETAILS.
5. FOR CLARITY, FINAL CLOSURE STORMWATER MANAGEMENT FEATURES ARE NOT SHOWN ON THIS DRAWING. REFER TO DRAWING 38 FOR A DRAWING SHOWING THE LAYOUT PLAN AND IDENTIFICATION OF THESE FEATURES.
6. THE PLANT UTILITY CORRIDOR REFERS TO A 100-FT WIDE CORRIDOR IMMEDIATELY EAST OF THE CONSOLIDATED LINED AREA THAT WILL BE CONSTRUCTED IN CONJUNCTION WITH THE CLOSURE PROJECT. CORRIDOR MAY BE USED FOR PLANT-RELATED UTILITIES AND INFRASTRUCTURE.
7. IN ADDITION TO PERMANENT STORMWATER PONDS SHOWN, TEMPORARY LINED STORMWATER PONDS WILL BE UTILIZED DURING CONSTRUCTION AS NEEDED.



PERMIT DRAWING NOT FOR CONSTRUCTION

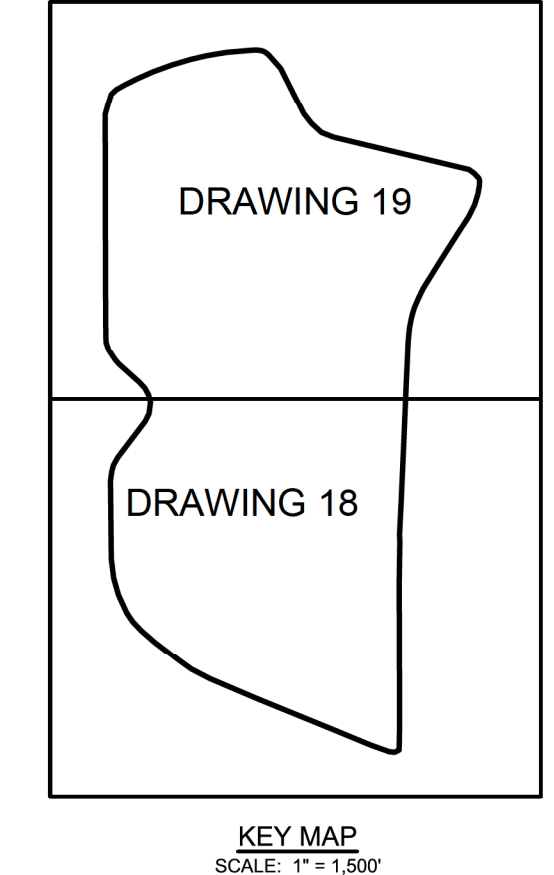
0	AUG. 2021	SUBMITTAL TO GA EPD	JV/KH	RB	
REV	DATE	DESCRIPTION	DRN	APP	
FINAL CLOSURE GRADING PLAN - SOUTH AP-1					
PLANT BOWEN ASH POND 1 (AP-1) CLOSURE DRAWINGS BARTOW COUNTY, GEORGIA					
1295 ROBERTS BOULEVARD, NW, SUITE 200 KENNESAW, GEORGIA 30144 USA		Geosyntec consultants		PHONE: 678.202.9600 WWW.GEOSYNTEC.COM	
PROJ. NO.	GR6601	DWG.	GR6601-018	EDIT	8/16/21
SCALE	1" = 150'	DRAWING 18 OF 50			
DATE	AUGUST 2021				

P:\CADD\PROJECTS\GEORGIA POWER\BOWEN POWER PLANT\TERRAIN\ASH POND CLOSURE (GR6601)\DRAWINGS\GR6601-018

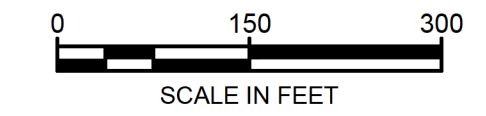


LEGEND

	TOP OF FINAL COVER SYSTEM / TOP OF CCR FOR ALTERNATIVE COVER SYSTEM (CLOSURETURF® COVER) / FINISHED GRADE ELEVATION (FEET)
	PERMIT BOUNDARY
	LIMIT OF DISTURBANCE
	FINAL LIMIT OF CCR



- NOTES:**
- SEE DRAWING 2 FOR LEGENDS, ABBREVIATIONS, AND GENERAL SITE NOTES.
 - TOP OF FINAL COVER GRADES SHOWN ON THIS DRAWING REPRESENT BOTH THE TOP OF SOIL-GEOSYNTHETIC COMPOSITE FINAL COVER SYSTEM AND THE TOP OF CLOSURETURF® ALTERNATIVE FINAL COVER SYSTEM ELEVATIONS WITHIN THE FINAL COVER LIMITS. THESE GRADES ALSO REPRESENT THE TOP OF CCR ELEVATIONS FOR THE CLOSURETURF® ALTERNATIVE FINAL COVER SYSTEM. BEYOND THE FINAL COVER LIMITS, PROPOSED FINISHED GRADES ARE SHOWN, WHICH TIE-IN TO EXISTING GROUND TOPOGRAPHY AT THE LIMIT OF DISTURBANCE. SEE DRAWING 2, GENERAL SITE NOTE 19. BASED ON FIELD CONDITIONS ENCOUNTERED, THE ELEVATION OF THE FINAL COVER MAY VARY, PROVIDED THAT THE ENGINEERING DESIGN CRITERIA ARE MET. THE MAXIMUM FINAL COVER ELEVATION WILL NOT BE EXCEEDED WITHOUT GA EPD AUTHORIZATION.
 - REFER TO DRAWINGS 20 THROUGH 23 FOR THE CLOSURE PHASING PLANS.
 - REFER TO DRAWINGS 38 THROUGH 49 FOR THE STORMWATER MANAGEMENT SYSTEM AND EROSION AND SEDIMENT CONTROL PLAN AND DETAILS.
 - FOR CLARITY, FINAL CLOSURE STORMWATER MANAGEMENT FEATURES ARE NOT SHOWN ON THIS DRAWING. REFER TO DRAWING 38 FOR A DRAWING SHOWING THE LAYOUT PLAN AND IDENTIFICATION OF THESE FEATURES.
 - THE PLANT UTILITY CORRIDOR REFERS TO A 100-FT WIDE CORRIDOR IMMEDIATELY EAST OF THE CONSOLIDATED LINED AREA THAT WILL BE CONSTRUCTED IN CONJUNCTION WITH THE CLOSURE PROJECT. CORRIDOR MAY BE USED FOR PLANT-RELATED UTILITIES AND INFRASTRUCTURE.
 - IN ADDITION TO PERMANENT STORMWATER PONDS SHOWN, TEMPORARY LINED STORMWATER PONDS WILL BE UTILIZED DURING CONSTRUCTION AS NEEDED.



MATCHLINE



PERMIT DRAWING
NOT FOR CONSTRUCTION

0	AUG. 2021	SUBMITTAL TO GA EPD	JV/KH	RB	
REV	DATE	DESCRIPTION	DRN	APP	
FINAL CLOSURE GRADING PLAN - NORTH AP-1					
PLANT BOWEN ASH POND 1 (AP-1) CLOSURE DRAWINGS BARTOW COUNTY, GEORGIA					
Geosyntec consultants					
1255 ROBERTS BOULEVARD, NW, SUITE 200 KENNESAW, GEORGIA 30144 USA PHONE: 678.202.9500 WWW.GEOSYNTEC.COM					
PROJ. NO.	GR6601	DWG.	GR6601-019	EDIT	8/16/21
SCALE	1" = 150'		DRAWING		19 OF 50
DATE	AUGUST 2021				

P:\CAD\PROJECTS\GEORGIA POWER\BOWEN ASH POND CLOSURE (GR6601)\DRAWINGS\GR6601-019