



ENVIRONMENTAL PROTECTION DIVISION

Jeffrey W. Cown, Director

EPD Director's Office

2 Martin Luther King, Jr. Drive
Suite 1456, East Tower
Atlanta, Georgia 30334
404-656-4713

CATEGORICAL EXCLUSION DETERMINATION

Facility Upgrades
City of Odum (Wayne County)
ARPA Grant No. GA-0011419

The Georgia Environmental Protection Division (EPD) has conducted a review of the above project in accordance with the State's Environmental Review Process (SERP). EPD has determined that this project is eligible for a categorical exclusion. Accordingly, no further environmental review is planned. The proposed project consists of dredging the aeration and holding ponds, grading the ponds to original design, replacing the pond liners, and installation of a new influent screening structure. The facility will utilize a temporary treatment tank while upgrades are done on the existing treatment system. Existing buildings will not be impacted as a result of this project. All construction will be located on City-owned property. The project will not be located in the 100-year floodplain as indicated by the Federal Emergency Management Agency (FEMA) map.

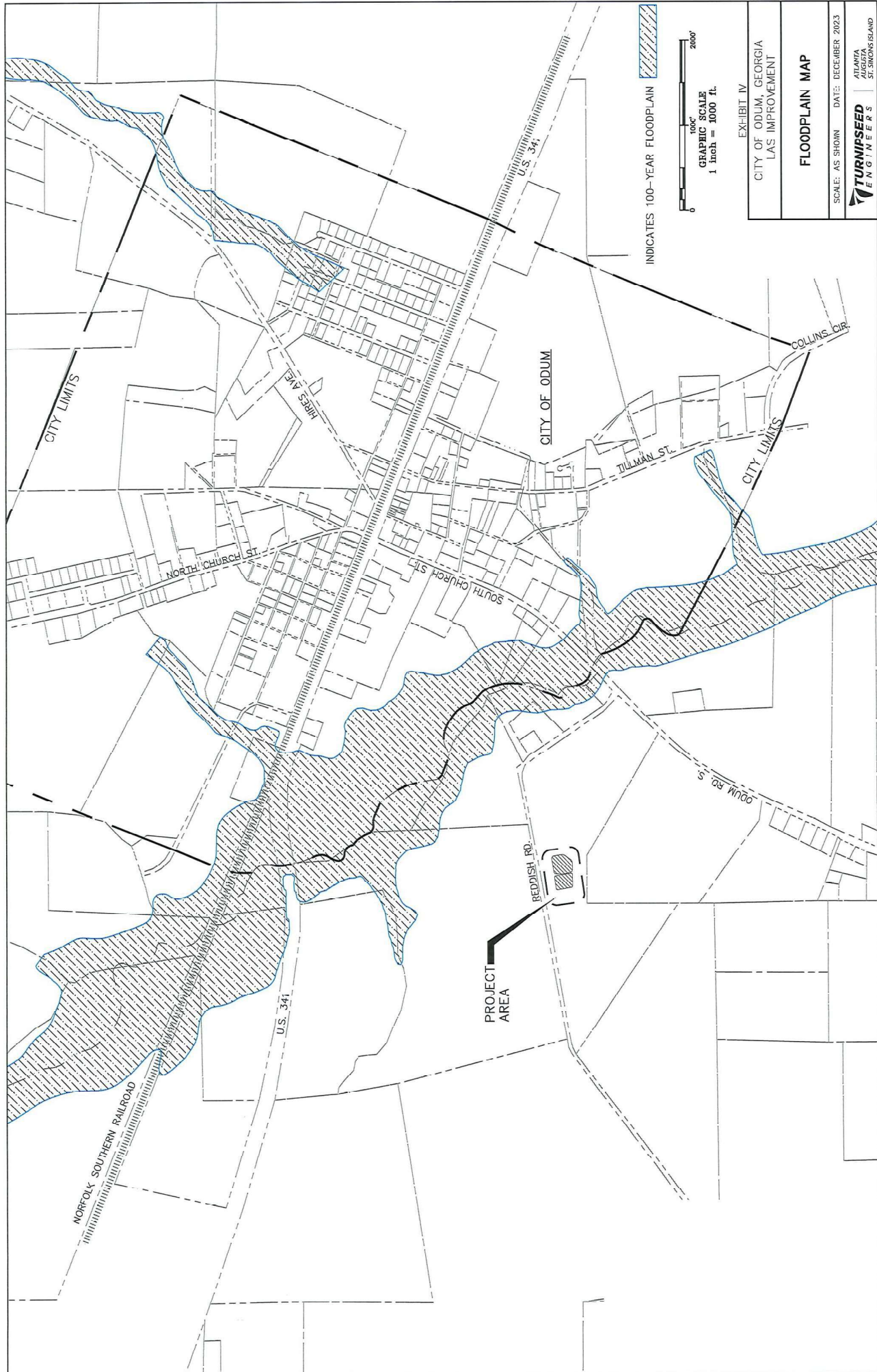
This project is eligible for a categorical exclusion because it meets the following specific criteria, outlined in the SERP: functional replacement of equipment, minor rehabilitation of existing facilities, and construction of new ancillary facilities adjacent to existing facilities that do not affect the degree of treatment or capacity of the existing facility. Furthermore: the project will not create a new or relocate an existing discharge to surface or ground waters; the project will not substantially increase the volume of discharge or loading of pollutants; the project will not provide capacity to serve a population 30% greater than the existing population; the project will not have a significant effect on the quality of the human environment; the action will not directly or indirectly affect cultural resources, habitats of endangered or threatened species, or environmentally important natural resource areas; and the action is cost-effective and should cause no significant public controversy.

This determination is effective immediately. This exclusion may be revoked at any time if: 1) the project is altered and no longer meets the requirements of a categorical exclusion, 2) new evidence shows that serious environmental issues exist, or 3) a local, State or Federal law is being or may be violated. The information which supports this decision can be viewed online via the Georgia EPD Online System (GEOS) at https://geos.epd.georgia.gov/GA/GEOS/Public/Client/GA_GEOS/Public/Pages/PublicApplicationList.aspx and is available for public review upon request with the Georgia EPD.

If you have any questions about this determination, please contact August Lutkehus of my staff at august.lutkehus@dnr.ga.gov or (470) 524-0733.

Issuance Date: 02/08/2024

Jeffrey W. Cown, Director
Environmental Protection Division



INDICATES 100-YEAR FLOODPLAIN

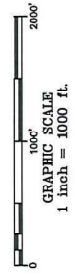
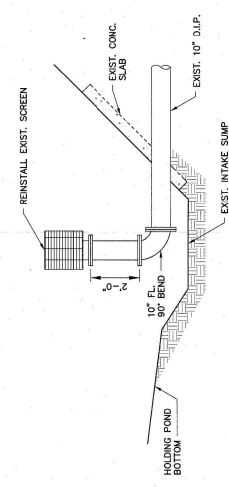
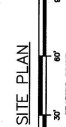
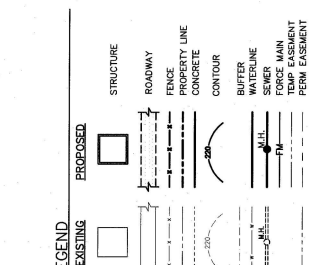
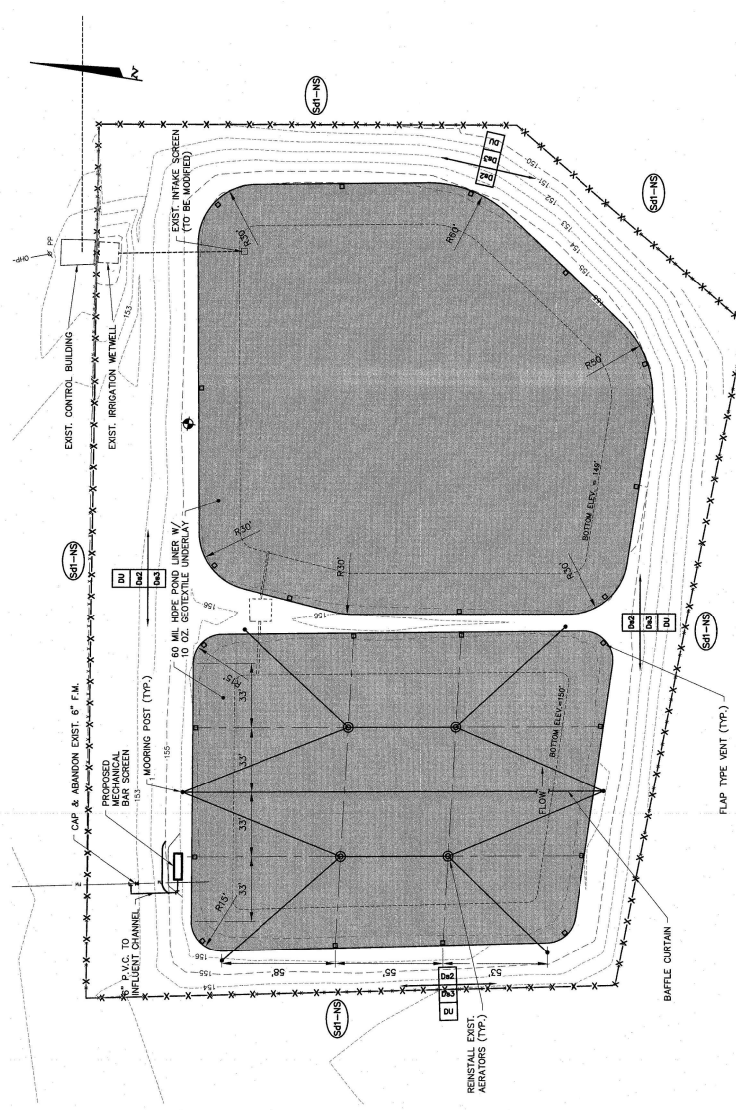


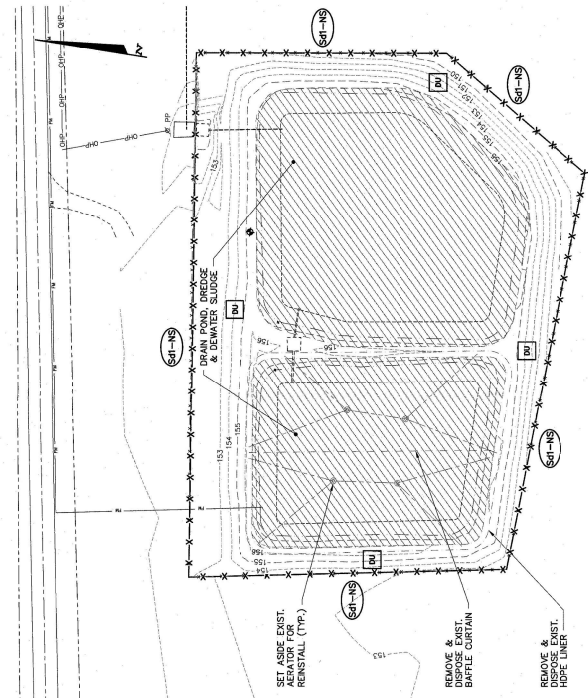
EXHIBIT IV	
CITY OF ODUM, GEORGIA LAS IMPROVEMENT	
FLOODPLAIN MAP	
SCALE: AS SHOWN	DATE: DECEMBER 2023
 ATLANTA AUGUSTA ST. SIMONS ISLAND	



INTAKE SCREEN MODIFICATIONS
SCALE: N.T.S.



REVISIONS		CITY OF ODUM, GEORGIA LAS IMPROVEMENTS	
NO.	DATE	BY	CHKD.
1			
2			
3			
4			
5			
6			
7			
8			
9			
10			
DRAWN: CHECKED:		DATE: NOVEMBER 2023	
ROD	WDT	SCALE: AS SHOWN	SHEET
			2 OF 11
 ATLANTA 575 W. PINE STREET ST. SIMONS ISLAND			



- NOTES:**
- CONTRACTOR SHALL PHASE LINER REPLACEMENT AS DESCRIBED IN THE INSTRUCTIONS TO BIDDERS OR SUBMIT ALTERNATE PHASING PLAN TO ENGINEER FOR APPROVAL.
 - EXISTING AERATORS SHALL BE TEMPORARILY RELOCATED TO HOLDING POND PRIOR TO BEGINNING WORK IN THE AERATION TANKS. CONTRACTOR SHALL PROVIDE TEMPORARY MOORING AND POWER TO AERATORS.
 - CONTRACTOR IS RESPONSIBLE FOR ALL BYPASS PUMPING REQUIRED TO COMPLETE WORK. INFLUENT AND IRRIGATION PUMPING RATES ARE APPROXIMATELY 300 GPM AND 700 GPM, RESPECTIVELY. CONTRACTOR TO FIELD VERIFY.
 - CONTRACTOR SHALL FINE GRADE & COMPACT POND BASE BACK TO ORIGINAL CONTOURS PRIOR TO LINER INSTALLATION.
 - ALL MATERIAL REMOVED FROM POND MUST BE DISPOSED OF IN A MUNICIPAL SOLID WASTE LANDFILL. CONTRACTOR SHALL MAKE ARRANGEMENTS FOR DISPOSAL AT THE LATER OF ACCEPTANCE FROM THE FACILITY TO THE ENGINEER.
 - ALL TRANSPORTATION COST, TOWNS FEES, AND OTHERS FOR DISPOSAL OF SOLIDS SHALL BE INCLUDED IN THE CONTRACTOR'S UNIT PRICE. THE CONTRACTOR SHALL INCLUDE COST FOR SAMPLING EACH LOAD TO DETERMINE THE PERCENT SOLIDS AND DRY WEIGHT OF EACH SHIPMENT. CONTRACTOR WILL PROVIDE RANDOM THIRD PARTY TESTING TO VERIFY.
 - IF A CONTRACTOR OPTS TO DISPOSE OF MATERIAL IN A MUNICIPAL SOLID WASTE LANDFILL, CONTRACTOR SHALL BEAR THE BURDEN OF OBTAINING ALL REQUIRED PERMITS (EPA, LOCAL, ETC.) AND PROVIDE COPIES OF SUCH PERMITS TO THE ENGINEER PRIOR TO DREDGING. ALL PERMITTING COSTS MUST BE INCLUDED IN THE CONTRACTOR'S UNIT PRICE.
 - CONTRACTOR IS RESPONSIBLE FOR DEWATERING ALL MATERIAL FROM DEWATERED MATERIAL MUST BE RETURNED TO THE TREATMENT PROCESS VIA THE PLANT DRAINS OR INFLUENT SEWERS PRIOR TO THE AERATION POND.
 - PLACEMENT OF DEWATERING AND OTHER EQUIPMENT, REQUIRED FOR DREDGING, MUST BE COORDINATED WITH THE PLANT OPERATORS. ACCESS FOR THE OWNER'S VEHICLES & EQUIPMENT MUST BE MAINTAINED AT ALL TIMES.
 - CONTRACTOR SHALL PROVIDE BRIDGING OVER ANY TEMPORARY PIPES LAID ACROSS DRIVES OR PARKING AREAS.
 - A SLUDGE SURVEY HAS BEEN INCLUDED IN THE BACK OF THE SPECIFICATIONS FOR BID PURPOSES.