

EPD Director's Office

2 Martin Luther King, Jr. Drive
Suite 1470A, East Tower
Atlanta, Georgia 30334
404-463-1511

CATEGORICAL EXCLUSION DETERMINATION

Toccoa Creek WPCP Improvements
City of Toccoa (Stephens County)
GEFA Loan No. CW-2023-027
ARPA Grant No. GA-0011418

The Georgia Environmental Protection Division (EPD) has conducted a review of the above project in accordance with the State's Environmental Review Process (SERP). EPD has determined that this project is eligible for a categorical exclusion. Accordingly, no further environmental review is planned. The proposed project consists of replacing the existing mechanical bar screen, headworks structure, influent pumps, aerators, clarifier equipment, UV disinfection equipment and other miscellaneous improvements throughout the plant. The project also includes the construction of a new flow equalization basin, and the installation of transfer pump station and associated force main to divert influent flow from the Toccoa Creek WPCP to the Eastanollee Creek WPCP to avoid excessive loadings during rain events. The new force main will not provide service to new customers. All construction will be located on City-owned property and existing right-of-ways. The project may be located in 100-year floodplain as indicated by Federal Emergency Management Agency (FEMA) map. However, it was determined that project will not negatively impact the floodway and all proposed structures and mechanical equipment will be constructed or installed above flood elevation. Detailed mitigation measures will be described in the construction documents (plans and specifications) for the project.

This project is eligible for a categorical exclusion because it meets the following specific criteria, outlined in the SERP: functional replacement of equipment, and construction of new ancillary facilities adjacent to existing facilities that do not affect the degree of treatment or capacity of the existing facility. Furthermore: the project will not create a new or relocate an existing discharge to surface or ground waters; the project will not substantially increase the volume of discharge or loading of pollutants; the project will not provide capacity to serve a population 30% greater than the existing population; the project will not have a significant effect on the quality of the human environment; the action will not directly or indirectly affect cultural resources, habitats of endangered or threatened species, or environmentally important natural resource areas; and the action is cost-effective and should cause no significant public controversy.

This determination is effective immediately. This exclusion may be revoked at any time if: 1) the project is altered and no longer meets the requirements of a categorical exclusion, 2) new evidence shows that serious environmental issues exist, or 3) a local, State or Federal law is being or may be violated. The information which supports this decision is on file with the Georgia Environmental Protection Division and is available for public review upon request.

If you have any questions about this determination, please contact Ethan Rhine of my staff at ethan.rhine@dnr.ga.gov or (678) 672-6037.

Issuance Date: 04/11/2024



Jeffrey W. Cown, Director
Environmental Protection Division

PROJECT LOCATION
TOCCOA CREEK WPCP

TRANSFER FORCE MAIN
TO COLLECTION SYSTEM

TOCCOA
CITY LIMITS

EXISTING 24" SEWER
TRUNK LINE

EASTANOLLEE
CREEK WPCP



Carter & Sloop

CONSULTING ENGINEERS

MACON ♦ ATHENS ♦ CANTON ♦ MOULTRIE

1031 STONEBRIDGE PARKWAY, WATKINSVILLE, GA 30677 . 706.769.4119 TEL . 706.769.4546 FAX

EXHIBIT B OVERALL AERIAL PROJECT MAP

1"=2500'

THIS LINE IS ONE INCH LONG
WHEN DRAWING IS PLOTTED FULL SCALE

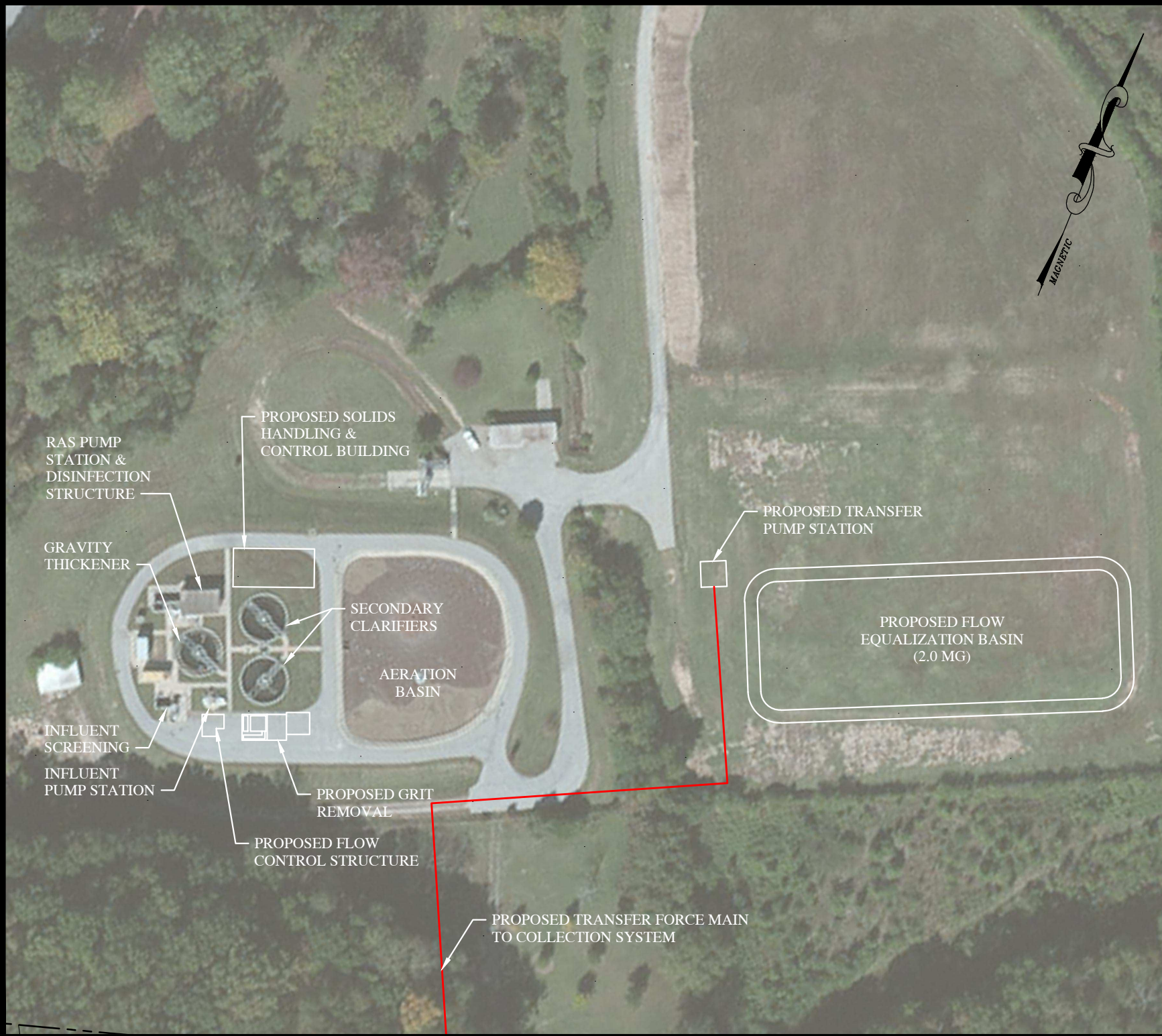


EXHIBIT F PROPOSED SITE PLAN

1" = 100'

THIS LINE IS ONE INCH LONG
WHEN DRAWING IS PLOTTED FULL SCALE



MACON ♦ ATHENS ♦ CANTON ♦ MOULTRE

1031 STONEBRIDGE PARKWAY, WATKINSVILLE, GA 30677 • 706.769.4119 TEL • 706.769.4546 FAX