



Richard E. Dunn, Director

EPD Director's Office

2 Martin Luther King, Jr. Drive
Suite 1456, East Tower
Atlanta, Georgia 30334
404-656-4713

CATEGORICAL EXCLUSION DETERMINATION

Facility, Pump Station and Sewer Upgrades
City of Cuthbert (Randolph County)
GEFA Loan No. CW-DRA-2020-003

The Georgia Environmental Protection Division (EPD) has conducted a review of the above project in accordance with the State's Environmental Review Process (SERP). EPD has determined that this project is eligible for a categorical exclusion. Accordingly, no further environmental review is planned. The proposed project consists of the replacement of the centrifugal sludge press with a belt filter press of the same treatment capacity, installation of new influent bypass pumps, and clearing of the emergency equalization basin at the Cuthbert Water Pollution Control Plant. The project will also include new bypass pumps for four existing pump stations and replacement of a failing pump station to provide the same capacity. Additionally, the project will include rehabilitation of existing sanitary sewer lines via cured-in-place piping and pipe-bursting methods and replacement of sanitary sewer lines via open-cut, with jack-and-bore methods as necessary. Existing buildings will not be impacted as a result of this project. All construction will be located on City owned-property and/or existing right-of-ways.

This project is eligible for a categorical exclusion because it meets the following specific criteria, outlined in the SERP: functional replacement of equipment and minor rehabilitation of existing facilities. Furthermore: the project will not create a new or relocate an existing discharge to surface or ground waters; the project will not substantially increase the volume of discharge or loading of pollutants; the project will not provide capacity to serve a population 30% greater than the existing population; the project will not have a significant effect on the quality of the human environment; the action will not directly or indirectly affect cultural resources, habitats of endangered or threatened species, or environmentally important natural resource areas; and the action is cost-effective and should cause no significant public controversy.

This determination becomes effective after thirty (30) days following its distribution by EPD. This exclusion may be revoked at any time if: 1) the project is altered and no longer meets the requirements of a categorical exclusion, 2) new evidence shows that serious environmental issues exist, or 3) a local, State or Federal law is being or may be violated. The information which supports this decision is on file with the Georgia Environmental Protection Division and is available for public review upon request. A copy of the proposed project documentation is also available for review at Cuthbert City Hall in Randolph County, Georgia.

Categorical Exclusion
GEFA Loan No. CW-DRA-2020-003
City of Cuthbert
Page 2 of 2

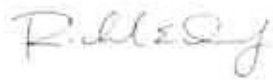
All interested agencies, groups and persons supporting or disagreeing with this decision are invited to submit comments within thirty (30) days of the publish date of this notice via email to august.lutkehus@dnr.ga.gov or to the following address:

Georgia Environmental Protection Division
Watershed Protection Branch
Wastewater Regulatory Program
ATTN: August Lutkehus
2 Martin Luther King Jr. Drive, Suite 1152 East
Atlanta, Georgia 30334

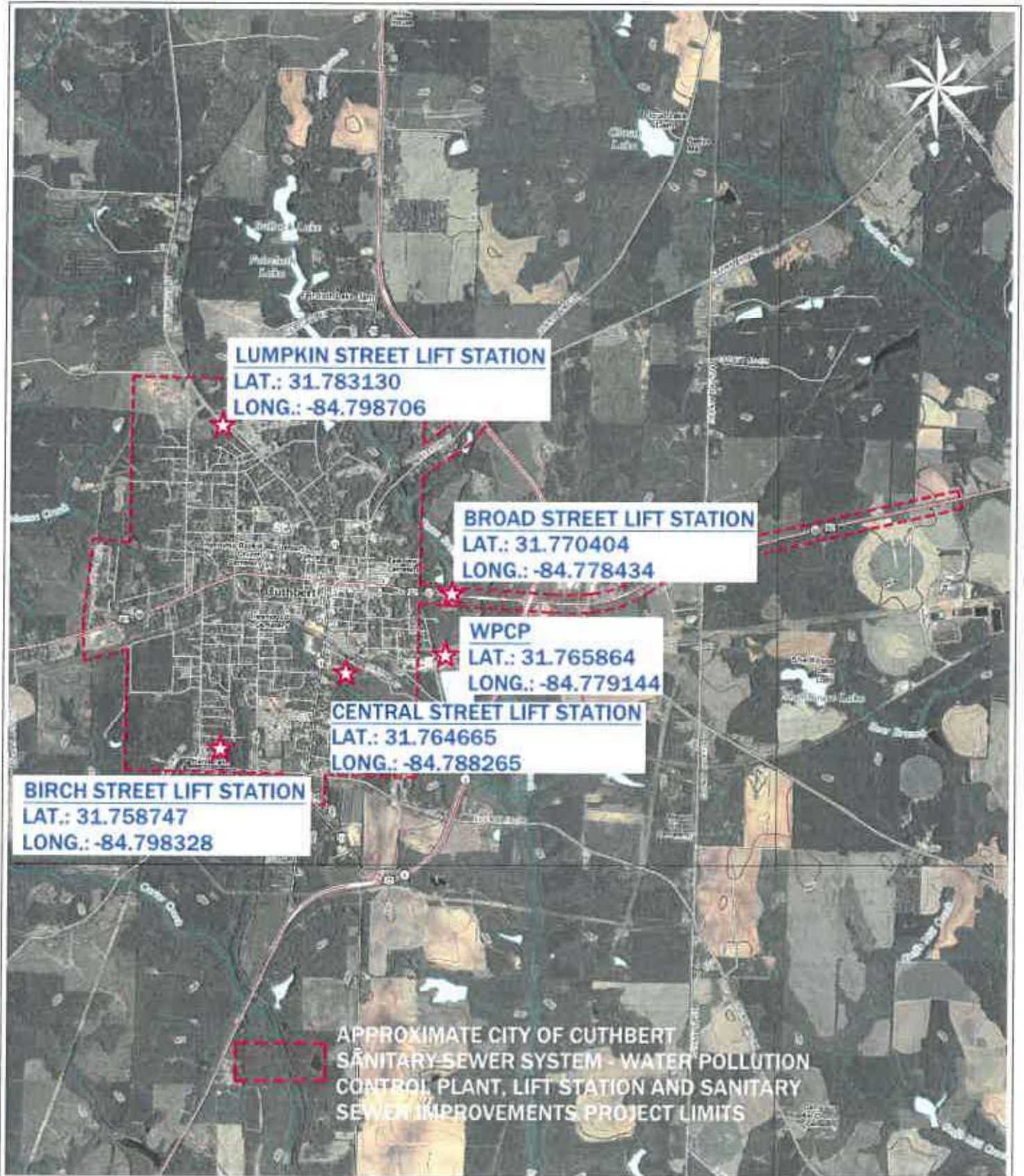
After evaluating the comments received, EPD will make a final decision regarding approval of the project. No administrative action will be taken on the project for thirty (30) calendar days after publication of this Notice.

SEP 29 2020

Publish Date: _____



Richard E. Dunn, Director
Environmental Protection Division



**PROJECT COORDINATES
MAP**

**CWDRA WATER POLLUTION CONTROL PLANT, LIFT
STATION AND SANITARY SEWER IMPROVEMENTS
FOR THE
CITY OF CUTHBERT
RANDOLPH COUNTY, GEORGIA**



STILL WATERS

120 VETERINARY WAY, UNIT 2, LEXINGTON, GA. 31763, 228.498.5700
WWW.STILLWATERSENG.COM