



ENVIRONMENTAL PROTECTION DIVISION

Richard E. Dunn, Director

EPD Director's Office

2 Martin Luther King, Jr. Drive
Suite 1456, East Tower
Atlanta, Georgia 30334
404-656-4713

May 3, 2023

MEMORANDUM

To: James Boylan, Air Branch Chief *JB*
Through: DeAnna Oser, Assistant Branch Chief
From: Jaime Gore, Operations 1 Unit Manager
RE: Cobb – August 9 – August 21, 2022, Sampling Results for Ethylene Oxide

Samples of Ethylene Oxide (EtO) were collected during the period of August 9 – August 21, 2022, by the Ambient Monitoring Program in the Cobb area to characterize the EtO concentration. Each of the samples were sent to the Georgia Environmental Protection Division Laboratory (EPD) for analysis. The Qualifier code of “2” was given to samples to indicate that the collection deviated from established procedures, but the integrity of the sample was not compromised. The Qualifier code of “3” was given to samples to indicate that integrity of the field data may have been compromised. The Qualifier code of “SQ” indicates the analysis of the sample was above the method detection limit but below the practical quantification limit.

Location	Date	Qualifier	EtO Concentration ($\mu\text{g}/\text{m}^3$)
S2	08/09/2022	SQ, 3	0.11
S2	08/21/2022	2, 3	0.14
S2 QA	08/09/2022	3	0.16
S6 SA	08/21/2022	SQ	0.11
S7 SA	08/21/2022	SQ	0.13

If you have any questions, please let me know.

JCG

**GEORGIA DEPARTMENT OF NATURAL RESOURCES
ENVIRONMENTAL PROTECTION DIVISION**

5804 Peachtree Corners East, Norcross, GA 30092-3403
(678) 248-7384

LABORATORY REPORT

TO: Ga EPD Air Program EPD Air Prot Ambient Monitoring 4244 International Pkwy Ste 120 Atlanta, GA 30354	Date Collected: 8/3/2022 Time Collected: 0:00 Sample Collector: H. STREET Canister Number: 114352 Canister Cleaned: 7/11/2022 Received By: HZ
Sample ID: AL05259 Facility Name: SOUTH DEKALB Site ID: 013-089-0002 Location ID: Location Descr:	Date Received: 8/5/2022 Time Received: 11:26 AM Project: AIR Reporting Date: 11/10/2022 Received Temperature: 21.7 °C

ANALYTE	PARAMETER CODE	NOTE	EPA METHOD	RESULT	UNITS	QUALIFIER RL	ANALYSIS ANALYST DATE	MCL or QC Range
ETO by EPA Method TO-15 QC Batch 198047								
Bromofluorobenzene(Surrogate QC Std.)			EPA TO-15	9.5786	ppbV		KL 8/9/2022	8 to 12
Ethylene Oxide			EPA TO-15	0.0795	ppbV	0.0232	KL 8/9/2022	
ETO Results by EPA Method TO-15								
Bromofluorobenzene(Surrogate QC Std.)			EPA TO-15	68.5158	ug/m3		KL 8/9/2022	57.22 to 85.84
Ethylene Oxide			EPA TO-15	0.1433	ug/m3	0.0418	KL 8/9/2022	

COMMENTS: \$ETO received in the lab at 5.8 psi.

ug/L: micrograms/liter
 mg/L: milligrams/liter
 mg/kg: milligrams/kilogram
 ug/kg: micrograms/kilogram
 ug/g: micrograms/gram
 ppm: parts per million
 ppb: parts per billion
 org/L: organisms/liter

<: less than
 MCL: Maximum Contaminant Level
 RL: Reporting Limit
 LSPC: result less than lower specification
 USPC: result greater than upper specification
 TIE: Tentatively Identified or Estimated
 VIOL: Violation (result exceeds MCL)

Laboratory Contacts:

Lab Director:	Mark Tolbert	470-524-0577
Inorganics:	Carmen Pyles	470-524-0629
Metals:	Shene Jones	470-524-0544
Organics:	Mary Bowman	470-524-0639
GC Mass Spec:	Ralph Schulz	470-524-0684
Microbiology:	Mary Bowman	470-524-0709

**GEORGIA DEPARTMENT OF NATURAL RESOURCES
ENVIRONMENTAL PROTECTION DIVISION**

5804 Peachtree Corners East, Norcross, GA 30092-3403
(678) 248-7384

LABORATORY REPORT

TO: Ga EPD Air Program EPD Air Prot Ambient Monitoring 4244 International Pkwy Ste 120 Atlanta, GA 30354	Date Collected: 8/9/2022 Time Collected: 0:00 Sample Collector: J. BRYANT Chlorination: Sample Type: Received By: HZ
	Date Received: 8/17/2022 Time Received: 11:23 AM Project: DATA STUDY Reporting Date: 11/10/2022 Received Temperature: 19.6 °C
Sample ID: AL06871 Facility Name: cobb s2-qa Site ID: S2-QA Location ID: QCCAN Location Descr:	

ANALYTE	PARAMETER CODE	NOTE	EPA METHOD	RESULT	UNITS	QUALIFIER RL	ANALYSIS ANALYST	DATE	MCL or QC Range
ETO by EPA Method TO-15 QC Batch 198267									
Bromofluorobenzene(Surrogate QC Std.)			EPA TO-15	9.5101	ppbV		KL	8/18/2022	8 to 12
Ethylene Oxide			EPA TO-15	0.0864	ppbV	0.0232	KL	8/18/2022	
ETO Results by EPA Method TO-15									
Bromofluorobenzene(Surrogate QC Std.)			EPA TO-15	68.0259	ug/m3		KL	8/18/2022	57.22 to 85.84
Ethylene Oxide			EPA TO-15	0.1557	ug/m3	0.0418	KL	8/18/2022	

COMMENTS: \$ETO received in the lab at 4 in Hg.

ug/L: micrograms/liter
 mg/L: milligrams/liter
 mg/kg: milligrams/kilogram
 ug/kg: micrograms/kilogram
 ug/g: micrograms/gram
 ppm: parts per million
 ppb: parts per billion
 org/L: organisms/liter

<: less than
 MCL: Maximum Contaminant Level
 RL: Reporting Limit
 LSPC: result less than lower specification
 USPC: result greater than upper specification
 TIE: Tentatively Identified or Estimated
 VIOL: Violation (result exceeds MCL)

Laboratory Contacts:

Lab Director:	Mark Tolbert	470-524-0577
Inorganics:	Carmen Pyles	470-524-0629
Metals:	Shene Jones	470-524-0544
Organics:	Mary Bowman	470-524-0639
GC Mass Spec:	Ralph Schulz	470-524-0684
Microbiology:	Mary Bowman	470-524-0709

**GEORGIA DEPARTMENT OF NATURAL RESOURCES
ENVIRONMENTAL PROTECTION DIVISION**

5804 Peachtree Corners East, Norcross, GA 30092-3403
(678) 248-7384

LABORATORY REPORT

TO: Ga EPD Air Program EPD Air Prot Ambient Monitoring 4244 International Pkwy Ste 120 Atlanta, GA 30354	Date Collected: 8/9/2022 Time Collected: 0:00 Sample Collector: J. BRYANT Chlorination: Sample Type: Received By: HZ
Sample ID: AL06872 Facility Name: covington c2-qa Site ID: C2-QA Location ID: Location Descr:	Date Received: 8/17/2022 Time Received: 11:34 AM Project: DATA STUDY Reporting Date: 11/10/2022 Received Temperature: 21.6 °C

ANALYTE	PARAMETER CODE NOTE	EPA METHOD	RESULT	UNITS	QUALIFIER RL	ANALYSIS ANALYST DATE	MCL or QC Range
ETO by EPA Method TO-15 QC Batch 198267							
Bromofluorobenzene(Surrogate QC Std.)	EPA TO-15	9.1717	ppbV		KL	8/18/2022	8 to 12
Ethylene Oxide	EPA TO-15	0.0775	ppbV	0.0232	KL	8/18/2022	
ETO Results by EPA Method TO-15							
Bromofluorobenzene(Surrogate QC Std.)	EPA TO-15	65.6053	ug/m3		KL	8/18/2022	57.22 to 85.84
Ethylene Oxide	EPA TO-15	0.1397	ug/m3	0.0418	KL	8/18/2022	

COMMENTS: \$ETO received in the lab at 5.5 in Hg.

ug/L: micrograms/liter
 mg/L: milligrams/liter
 mg/kg: milligrams/kilogram
 ug/kg: micrograms/kilogram
 ug/g: micrograms/gram
 ppm: parts per million
 ppb: parts per billion
 org/L: organisms/liter

<: less than
 MCL: Maximum Contaminant Level
 RL: Reporting Limit
 LSPC: result less than lower specification
 USPC: result greater than upper specification
 TIE: Tentatively Identified or Estimated
 VIOL: Violation (result exceeds MCL)

Laboratory Contacts:

Lab Director:	Mark Tolbert	470-524-0577
Inorganics:	Carmen Pyles	470-524-0629
Metals:	Shene Jones	470-524-0544
Organics:	Mary Bowman	470-524-0639
GC Mass Spec:	Ralph Schulz	470-524-0684
Microbiology:	Mary Bowman	470-524-0709

**GEORGIA DEPARTMENT OF NATURAL RESOURCES
ENVIRONMENTAL PROTECTION DIVISION**

5804 Peachtree Corners East, Norcross, GA 30092-3403
(678) 248-7384

LABORATORY REPORT

TO: Ga EPD Air Program EPD Air Prot Ambient Monitoring 4244 International Pkwy Ste 120 Atlanta, GA 30354	Date Collected: 8/9/2022 Time Collected: 0:00 Sample Collector: J. BRYANT Chlorination: Sample Type: Received By: HZ
	Date Received: 8/17/2022 Time Received: 11:34 AM Project: DATA STUDY Reporting Date: 11/10/2022 Received Temperature: 20.1 °C
Sample ID: AL06873 Facility Name: fulton f2-qa Site ID: F2-QA Location ID: Location Descr:	

ANALYTE	PARAMETER CODE	NOTE	EPA METHOD	RESULT	UNITS	QUALIFIER RL	ANALYSIS ANALYST	DATE	MCL or QC Range
ETO by EPA Method TO-15 QC Batch 198267									
Bromofluorobenzene(Surrogate QC Std.)			EPA TO-15	9.3706	ppbV		KL	8/18/2022	8 to 12
Ethylene Oxide			EPA TO-15	0.1082	ppbV	0.0232	KL	8/18/2022	
ETO Results by EPA Method TO-15									
Bromofluorobenzene(Surrogate QC Std.)			EPA TO-15	67.028	ug/m3		KL	8/18/2022	57.22 to 85.84
Ethylene Oxide			EPA TO-15	0.195	ug/m3	0.0418	KL	8/18/2022	

COMMENTS: \$ETO received in the lab at 5 in Hg.

ug/L: micrograms/liter
 mg/L: milligrams/liter
 mg/kg: milligrams/kilogram
 ug/kg: micrograms/kilogram
 ug/g: micrograms/gram
 ppm: parts per million
 ppb: parts per billion
 org/L: organisms/liter

<: less than
 MCL: Maximum Contaminant Level
 RL: Reporting Limit
 LSPC: result less than lower specification
 USPC: result greater than upper specification
 TIE: Tentatively Identified or Estimated
 VIOL: Violation (result exceeds MCL)

Laboratory Contacts:

Lab Director:	Mark Tolbert	470-524-0577
Inorganics:	Carmen Pyles	470-524-0629
Metals:	Shene Jones	470-524-0544
Organics:	Mary Bowman	470-524-0639
GC Mass Spec:	Ralph Schulz	470-524-0684
Microbiology:	Mary Bowman	470-524-0709

**GEORGIA DEPARTMENT OF NATURAL RESOURCES
ENVIRONMENTAL PROTECTION DIVISION**

5804 Peachtree Corners East, Norcross, GA 30092-3403
(678) 248-7384

LABORATORY REPORT

TO: Ga EPD Air Program EPD Air Prot Ambient Monitoring 4244 International Pkwy Ste 120 Atlanta, GA 30354	Date Collected: 8/9/2022 Time Collected: 0:00 Sample Collector: J. BRYANT Chlorination: Sample Type: Received By: HZ
Sample ID: AL06874 Facility Name: covington c2 Site ID: C2 Location ID: Location Descr:	Date Received: 8/9/2022 Time Received: 11:34 AM Project: DATA STUDY Reporting Date: 11/10/2022 Received Temperature: 23.6 °C

ANALYTE	PARAMETER CODE	NOTE	EPA METHOD	RESULT	UNITS	QUALIFIER RL	ANALYSIS ANALYST DATE	MCL or QC Range
ETO by EPA Method TO-15 QC Batch 198267								
Bromofluorobenzene(Surrogate QC Std.)			EPA TO-15	9.4105	ppbV		KL 8/18/2022	8 to 12
Ethylene Oxide			EPA TO-15	0.0820	ppbV	0.0232	KL 8/18/2022	
ETO Results by EPA Method TO-15								
Bromofluorobenzene(Surrogate QC Std.)			EPA TO-15	67.3134	ug/m3		KL 8/18/2022	57.22 to 85.84
Ethylene Oxide			EPA TO-15	0.1478	ug/m3	0.0418	KL 8/18/2022	

COMMENTS: \$ETO received in the lab at 4 in Hg.

ug/L: micrograms/liter
 mg/L: milligrams/liter
 mg/kg: milligrams/kilogram
 ug/kg: micrograms/kilogram
 ug/g: micrograms/gram
 ppm: parts per million
 ppb: parts per billion
 org/L: organisms/liter

<: less than
 MCL: Maximum Contaminant Level
 RL: Reporting Limit
 LSPC: result less than lower specification
 USPC: result greater than upper specification
 TIE: Tentatively Identified or Estimated
 VIOL: Violation (result exceeds MCL)

Laboratory Contacts:

Lab Director:	Mark Tolbert	470-524-0577
Inorganics:	Carmen Pyles	470-524-0629
Metals:	Shene Jones	470-524-0544
Organics:	Mary Bowman	470-524-0639
GC Mass Spec:	Ralph Schulz	470-524-0684
Microbiology:	Mary Bowman	470-524-0709

**GEORGIA DEPARTMENT OF NATURAL RESOURCES
ENVIRONMENTAL PROTECTION DIVISION**

5804 Peachtree Corners East, Norcross, GA 30092-3403
(678) 248-7384

LABORATORY REPORT

TO: Ga EPD Air Program EPD Air Prot Ambient Monitoring 4244 International Pkwy Ste 120 Atlanta, GA 30354	Date Collected: 8/9/2022 Time Collected: 0:00 Sample Collector: J. BRYANT Chlorination: Sample Type: Received By: HZ
Sample ID: AL06877 Facility Name: fulton f2 Site ID: F2 Location ID: Location Descr:	Date Received: 8/17/2022 Time Received: 11:34 AM Project: DATA STUDY Reporting Date: 11/10/2022 Received Temperature: 21.3 °C

ANALYTE	PARAMETER CODE	NOTE	EPA METHOD	RESULT	UNITS	QUALIFIER RL	ANALYSIS ANALYST DATE	MCL or QC Range
ETO by EPA Method TO-15 QC Batch 198267								
Bromofluorobenzene(Surrogate QC Std.)			EPA TO-15	9.4380	ppbV		KL 8/18/2022	8 to 12
Ethylene Oxide			EPA TO-15	0.0849	ppbV	0.0232	KL 8/18/2022	
ETO Results by EPA Method TO-15								
Bromofluorobenzene(Surrogate QC Std.)			EPA TO-15	67.5101	ug/m3		KL 8/18/2022	57.22 to 85.84
Ethylene Oxide			EPA TO-15	0.153	ug/m3	0.0418	KL 8/18/2022	

COMMENTS: \$ETO received in the lab at 7 in Hg.

ug/L: micrograms/liter
 mg/L: milligrams/liter
 mg/kg: milligrams/kilogram
 ug/kg: micrograms/kilogram
 ug/g: micrograms/gram
 ppm: parts per million
 ppb: parts per billion
 org/L: organisms/liter

<: less than
 MCL: Maximum Contaminant Level
 RL: Reporting Limit
 LSPC: result less than lower specification
 USPC: result greater than upper specification
 TIE: Tentatively Identified or Estimated
 VIOL: Violation (result exceeds MCL)

Laboratory Contacts:

Lab Director:	Mark Tolbert	470-524-0577
Inorganics:	Carmen Pyles	470-524-0629
Metals:	Shene Jones	470-524-0544
Organics:	Mary Bowman	470-524-0639
GC Mass Spec:	Ralph Schulz	470-524-0684
Microbiology:	Mary Bowman	470-524-0709

**GEORGIA DEPARTMENT OF NATURAL RESOURCES
ENVIRONMENTAL PROTECTION DIVISION**

5804 Peachtree Corners East, Norcross, GA 30092-3403
(678) 248-7384

LABORATORY REPORT

TO: Ga EPD Air Program EPD Air Prot Ambient Monitoring 4244 International Pkwy Ste 120 Atlanta, GA 30354	Date Collected: 8/15/2022 Time Collected: 0:00 Sample Collector: C. KNOX Chlorination: Sample Type: Received By: HZ
	Date Received: 8/22/2022 Time Received: 11:46 AM Project: DATA STUDY Reporting Date: 11/10/2022 Received Temperature: 21.6 °C
Sample ID: AL06878 Facility Name: GENERAL COFFEE Site ID: 013-069-0002 Location ID: Location Descr:	

ANALYTE	PARAMETER CODE	NOTE	EPA METHOD	RESULT	UNITS	QUALIFIER RL	ANALYSIS ANALYST	DATE	MCL or QC Range
ETO by EPA Method TO-15 QC Batch 198360									
Bromofluorobenzene(Surrogate QC Std.)			EPA TO-15	8.8994	ppbV		KL	8/23/2022	8 to 12
Ethylene Oxide			EPA TO-15	0.0634	ppbV	SQ 2	0.0232	KL	8/23/2022
ETO Results by EPA Method TO-15									
Bromofluorobenzene(Surrogate QC Std.)			EPA TO-15	63.6575	ug/m3		KL	8/23/2022	57.22 to 85.84
Ethylene Oxide			EPA TO-15	0.1143	ug/m3	SQ 2	0.0418	KL	8/23/2022

COMMENTS: \$ETO received in the lab at 20 psi. Pressure difference of >0.5 psi between receipt from field and receipt in lab. Outlet was tripped before 8/9 scheduled run. Had to reset for 8/15.

ug/L: micrograms/liter
 mg/L: milligrams/liter
 mg/kg: milligrams/kilogram
 ug/kg: micrograms/kilogram
 ug/g: micrograms/gram
 ppm: parts per million
 ppb: parts per billion
 org/L: organisms/liter

<: less than
 MCL: Maximum Contaminant Level
 RL: Reporting Limit
 LSPC: result less than lower specification
 USPC: result greater than upper specification
 TIE: Tentatively Identified or Estimated
 VIOL: Violation (result exceeds MCL)

Laboratory Contacts:

Lab Director: Mark Tolbert 470-524-0577
 Inorganics: Carmen Pyles 470-524-0629
 Metals: Shene Jones 470-524-0544
 Organics: Mary Bowman 470-524-0639
 GC Mass Spec: Ralph Schulz 470-524-0684
 Microbiology: Mary Bowman 470-524-0709

**GEORGIA DEPARTMENT OF NATURAL RESOURCES
ENVIRONMENTAL PROTECTION DIVISION**

5804 Peachtree Corners East, Norcross, GA 30092-3403
(678) 248-7384

LABORATORY REPORT

TO: Ga EPD Air Program EPD Air Prot Ambient Monitoring 4244 International Pkwy Ste 120 Atlanta, GA 30354	Date Collected: 8/9/2022 Time Collected: 0:00 Sample Collector: J. BRYANT Chlorination: Sample Type: Received By: HZ
	Date Received: 8/17/2022 Time Received: 11:34 AM Project: DATA STUDY Reporting Date: 11/10/2022 Received Temperature: 23.5 °C
Sample ID: AL06879 Facility Name: cobb s2 Site ID: S2 Location ID: QCCAN Location Descr:	

ANALYTE	PARAMETER CODE	NOTE	EPA METHOD	RESULT	UNITS	QUALIFIER RL	ANALYSIS ANALYST	DATE	MCL or QC Range
ETO by EPA Method TO-15 QC Batch 198267									
Bromofluorobenzene(Surrogate QC Std.)			EPA TO-15	9.3490	ppbV		KL	8/18/2022	8 to 12
Ethylene Oxide			EPA TO-15	0.0637	ppbV	SQ 0.0232	KL	8/18/2022	
ETO Results by EPA Method TO-15									
Bromofluorobenzene(Surrogate QC Std.)			EPA TO-15	66.8735	ug/m3		KL	8/18/2022	57.22 to 85.84
Ethylene Oxide			EPA TO-15	0.1148	ug/m3	SQ 0.0418	KL	8/18/2022	

COMMENTS: \$ETO received in the lab at 5 in Hg.

ug/L: micrograms/liter
 mg/L: milligrams/liter
 mg/kg: milligrams/kilogram
 ug/kg: micrograms/kilogram
 ug/g: micrograms/gram
 ppm: parts per million
 ppb: parts per billion
 org/L: organisms/liter

<: less than
 MCL: Maximum Contaminant Level
 RL: Reporting Limit
 LSPC: result less than lower specification
 USPC: result greater than upper specification
 TIE: Tentatively Identified or Estimated
 VIOL: Violation (result exceeds MCL)

Laboratory Contacts:

Lab Director: Mark Tolbert 470-524-0577
 Inorganics: Carmen Pyles 470-524-0629
 Metals: Shene Jones 470-524-0544
 Organics: Mary Bowman 470-524-0639
 GC Mass Spec: Ralph Schulz 470-524-0684
 Microbiology: Mary Bowman 470-524-0709

**GEORGIA DEPARTMENT OF NATURAL RESOURCES
ENVIRONMENTAL PROTECTION DIVISION**

5804 Peachtree Corners East, Norcross, GA 30092-3403
(678) 248-7384

LABORATORY REPORT

TO: Ga EPD Air Program EPD Air Prot Ambient Monitoring 4244 International Pkwy Ste 120 Atlanta, GA 30354	Date Collected: 8/19/2022
	Time Collected: 0:00
Sample ID: AL06880 Facility Name: COBB S2, S6-SA, S7-SA FB Site ID: S2 Location ID: Location Descr:	Sample Collector: J. BRYANT
	Chlorination:
	Sample Type: Trip Blank
	Received By: HZ
	Date Received: 8/30/2022
	Time Received: 11:15 AM
	Project: DATA STUDY
	Reporting Date: 11/10/2022
	Received Temperature: 19.9 °C

ANALYTE	PARAMETER	EPA	RESULT	QUALIFIER		ANALYSIS		MCL or	
	CODE	NOTE		METHOD	UNITS	RL	ANALYST	DATE	QC Range
ETO by EPA Method TO-15 QC Batch 198579									
Bromofluorobenzene(Surrogate QC Std.)			EPA TO-15	9.7990	ppbV		KL	9/1/2022	8 to 12
Ethylene Oxide			EPA TO-15	0	ppbV	ND 0.0232	KL	9/1/2022	
ETO Results by EPA Method TO-15									
Bromofluorobenzene(Surrogate QC Std.)			EPA TO-15	70.0924	ug/m3		KL	9/1/2022	57.22 to 85.84
Ethylene Oxide			EPA TO-15	0	ug/m3	ND 0.0418	KL	9/1/2022	

COMMENTS: \$ETO received in the lab at 29 in Hg.

ug/L: micrograms/liter
mg/L: milligrams/liter
mg/kg: milligrams/kilogram
ug/kg: micrograms/kilogram
ug/g: micrograms/gram
ppm: parts per million
ppb: parts per billion
org/L: organisms/liter

<: less than
MCL: Maximum Contaminant Level
RL: Reporting Limit
LSPC: result less than lower specification
USPC: result greater than upper specification
TIE: Tentatively Identified or Estimated
VIOL: Violation (result exceeds MCL)

Laboratory Contacts:

Lab Director:	Mark Tolbert	470-524-0577
Inorganics:	Carmen Pyles	470-524-0629
Metals:	Shene Jones	470-524-0544
Organics:	Mary Bowman	470-524-0639
GC Mass Spec:	Ralph Schulz	470-524-0684
Microbiology:	Mary Bowman	470-524-0709

**GEORGIA DEPARTMENT OF NATURAL RESOURCES
ENVIRONMENTAL PROTECTION DIVISION**

5804 Peachtree Corners East, Norcross, GA 30092-3403
(678) 248-7384

LABORATORY REPORT

TO: Ga EPD Air Program EPD Air Prot Ambient Monitoring 4244 International Pkwy Ste 120 Atlanta, GA 30354	Date Collected: 8/15/2022 Time Collected: 0:00 Sample Collector: H. STREET Canister Number: 114334 Canister Cleaned: 7/25/2022 Received By: HZ
	Date Received: 8/17/2022 Time Received: 11:23 AM Project: AIR Reporting Date: 11/10/2022 Received Temperature: 20.9 °C
Sample ID: AL06881 Facility Name: SOUTH DEKALB Site ID: 013-089-0002 Location ID: Location Descr:	

ANALYTE	PARAMETER CODE	NOTE	EPA METHOD	RESULT	UNITS	QUALIFIER RL	ANALYSIS ANALYST	DATE	MCL or QC Range
ETO by EPA Method TO-15 QC Batch 198267									
Bromofluorobenzene(Surrogate QC Std.)			EPA TO-15	9.4747	ppbV		KL	8/18/2022	8 to 12
Ethylene Oxide			EPA TO-15	0.0849	ppbV	0.0232	KL	8/18/2022	
ETO Results by EPA Method TO-15									
Bromofluorobenzene(Surrogate QC Std.)			EPA TO-15	67.7726	ug/m3		KL	8/18/2022	57.22 to 85.84
Ethylene Oxide			EPA TO-15	0.153	ug/m3	0.0418	KL	8/18/2022	

COMMENTS: \$ETO received in the lab at 6.4 psi.

ug/L: micrograms/liter
 mg/L: milligrams/liter
 mg/kg: milligrams/kilogram
 ug/kg: micrograms/kilogram
 ug/g: micrograms/gram
 ppm: parts per million
 ppb: parts per billion
 org/L: organisms/liter

<: less than
 MCL: Maximum Contaminant Level
 RL: Reporting Limit
 LSPC: result less than lower specification
 USPC: result greater than upper specification
 TIE: Tentatively Identified or Estimated
 VIOL: Violation (result exceeds MCL)

Laboratory Contacts:

Lab Director:	Mark Tolbert	470-524-0577
Inorganics:	Carmen Pyles	470-524-0629
Metals:	Shene Jones	470-524-0544
Organics:	Mary Bowman	470-524-0639
GC Mass Spec:	Ralph Schulz	470-524-0684
Microbiology:	Mary Bowman	470-524-0709

**GEORGIA DEPARTMENT OF NATURAL RESOURCES
ENVIRONMENTAL PROTECTION DIVISION**

5804 Peachtree Corners East, Norcross, GA 30092-3403
(678) 248-7384

LABORATORY REPORT

TO: Ga EPD Air Program EPD Air Prot Ambient Monitoring 4244 International Pkwy Ste 120 Atlanta, GA 30354	Date Collected: 8/21/2022 Time Collected: 0:00 Sample Collector: J. BRYANT Chlorination: Sample Type: Received By: HZ
	Date Received: 8/30/2022 Time Received: 11:15 AM Project: DATA STUDY Reporting Date: 11/10/2022 Received Temperature: 21.2 °C
Sample ID: AL06882 Facility Name: COBB S6-SA Site ID: S6-SA Location ID: Location Descr:	

ANALYTE	PARAMETER	EPA	QUALIFIER			ANALYSIS		MCL or	
	CODE	NOTE	METHOD	RESULT	UNITS	RL	ANALYST	DATE	QC Range
ETO by EPA Method TO-15 QC Batch 198579									
Bromofluorobenzene(Surrogate QC Std.)			EPA TO-15	9.5837	ppbV		KL	9/1/2022	8 to 12
Ethylene Oxide			EPA TO-15	0.0624	ppbV	SQ	0.0232	KL	9/1/2022
ETO Results by EPA Method TO-15									
Bromofluorobenzene(Surrogate QC Std.)			EPA TO-15	68.5523	ug/m3		KL	9/1/2022	57.22 to 85.84
Ethylene Oxide			EPA TO-15	0.1125	ug/m3	SQ	0.0418	KL	9/1/2022

COMMENTS: \$ETO received in the lab at 5 in Hg.

ug/L: micrograms/liter
 mg/L: milligrams/liter
 mg/kg: milligrams/kilogram
 ug/kg: micrograms/kilogram
 ug/g: micrograms/gram
 ppm: parts per million
 ppb: parts per billion
 org/L: organisms/liter

<: less than
 MCL: Maximum Contaminant Level
 RL: Reporting Limit
 LSPC: result less than lower specification
 USPC: result greater than upper specification
 TIE: Tentatively Identified or Estimated
 VIOL: Violation (result exceeds MCL)

Laboratory Contacts:

Lab Director: Mark Tolbert 470-524-0577
 Inorganics: Carmen Pyles 470-524-0629
 Metals: Shene Jones 470-524-0544
 Organics: Mary Bowman 470-524-0639
 GC Mass Spec: Ralph Schulz 470-524-0684
 Microbiology: Mary Bowman 470-524-0709

GEORGIA DEPARTMENT OF NATURAL RESOURCES
ENVIRONMENTAL PROTECTION DIVISION

5804 Peachtree Corners East, Norcross, GA 30092-3403
(678) 248-7384

LABORATORY REPORT

TO: Ga EPD Air Program EPD Air Prot Ambient Monitoring 4244 International Pkwy Ste 120 Atlanta, GA 30354	Date Collected: 8/21/2022 Time Collected: 0:00 Sample Collector: J. BRYANT Chlorination: Sample Type: Received By: HZ
Sample ID: AL06883 Facility Name: COBB S7-SA Site ID: S7-SA Location ID: Location Descr:	Date Received: 8/30/2022 Time Received: 11:15 AM Project: DATA STUDY Reporting Date: 11/10/2022 Received Temperature: 23.8 °C

ANALYTE	PARAMETER CODE	NOTE	EPA METHOD	RESULT	UNITS	QUALIFIER RL	ANALYSIS ANALYST	DATE	MCL or QC Range
ETO by EPA Method TO-15 QC Batch 198579									
Bromofluorobenzene(Surrogate QC Std.)			EPA TO-15	9.6531	ppbV		KL	9/1/2022	8 to 12
Ethylene Oxide			EPA TO-15	0.0716	ppbV	SQ 0.0232	KL	9/1/2022	
ETO Results by EPA Method TO-15									
Bromofluorobenzene(Surrogate QC Std.)			EPA TO-15	69.0487	ug/m3		KL	9/1/2022	57.22 to 85.84
Ethylene Oxide			EPA TO-15	0.1291	ug/m3	SQ 0.0418	KL	9/1/2022	

COMMENTS: \$ETO received in the lab at 5.5 in Hg.

ug/L: micrograms/liter
mg/L: milligrams/liter
mg/kg: milligrams/kilogram
ug/kg: micrograms/kilogram
ug/g: micrograms/gram
ppm: parts per million
ppb: parts per billion
org/L: organisms/liter

<: less than
MCL: Maximum Contaminant Level
RL: Reporting Limit
LSPC: result less than lower specification
USPC: result greater than upper specification
TIE: Tentatively Identified or Estimated
VIOL: Violation (result exceeds MCL)

Laboratory Contacts:

Lab Director:	Mark Tolbert	470-524-0577
Inorganics:	Carmen Pyles	470-524-0629
Metals:	Shene Jones	470-524-0544
Organics:	Mary Bowman	470-524-0639
GC Mass Spec:	Ralph Schulz	470-524-0684
Microbiology:	Mary Bowman	470-524-0709

**GEORGIA DEPARTMENT OF NATURAL RESOURCES
ENVIRONMENTAL PROTECTION DIVISION**

5804 Peachtree Corners East, Norcross, GA 30092-3403
(678) 248-7384

LABORATORY REPORT

TO: Ga EPD Air Program EPD Air Prot Ambient Monitoring 4244 International Pkwy Ste 120 Atlanta, GA 30354	Date Collected: 8/9/2022 Time Collected: 0:00 Sample Collector: H. STREET Canister Number: 110327 Canister Cleaned: 7/25/2022 Received By: HZ
	Date Received: 8/11/2022 Time Received: 11:00 AM Project: AIR Reporting Date: 11/10/2022 Received Temperature: 23.1 °C
Sample ID: AL06884 Facility Name: SOUTH DEKALB Site ID: 013-089-0002 Location ID: Location Descr:	

ANALYTE	PARAMETER CODE	NOTE	EPA METHOD	RESULT	UNITS	QUALIFIER RL	ANALYSIS ANALYST	DATE	MCL or QC Range
ETO by EPA Method TO-15 QC Batch 198145									
Bromofluorobenzene(Surrogate QC Std.)			EPA TO-15	9.5953	ppbV		KL	8/12/2022	8 to 12
Ethylene Oxide			EPA TO-15	0.0704	ppbV	SQ 0.0232	KL	8/12/2022	
ETO Results by EPA Method TO-15									
Bromofluorobenzene(Surrogate QC Std.)			EPA TO-15	68.6353	ug/m3		KL	8/12/2022	57.22 to 85.84
Ethylene Oxide			EPA TO-15	0.1269	ug/m3	SQ 0.0418	KL	8/12/2022	

COMMENTS: \$ETO received in the lab at 6 psi.

ug/L: micrograms/liter
 mg/L: milligrams/liter
 mg/kg: milligrams/kilogram
 ug/kg: micrograms/kilogram
 ug/g: micrograms/gram
 ppm: parts per million
 ppb: parts per billion
 org/L: organisms/liter

<: less than
 MCL: Maximum Contaminant Level
 RL: Reporting Limit
 LSPC: result less than lower specification
 USPC: result greater than upper specification
 TIE: Tentatively Identified or Estimated
 VIOL: Violation (result exceeds MCL)

Laboratory Contacts:

Lab Director:	Mark Tolbert	470-524-0577
Inorganics:	Carmen Pyles	470-524-0629
Metals:	Shene Jones	470-524-0544
Organics:	Mary Bowman	470-524-0639
GC Mass Spec:	Ralph Schulz	470-524-0684
Microbiology:	Mary Bowman	470-524-0709

**GEORGIA DEPARTMENT OF NATURAL RESOURCES
ENVIRONMENTAL PROTECTION DIVISION**

5804 Peachtree Corners East, Norcross, GA 30092-3403
(678) 248-7384

LABORATORY REPORT

TO: Ga EPD Air Program EPD Air Prot Ambient Monitoring 4244 International Pkwy Ste 120 Atlanta, GA 30354	Date Collected: 8/9/2022 Time Collected: 0:00 Sample Collector: H. STREET Canister Number: 114321 Canister Cleaned: 7/25/2022 Received By: HZ
	Date Received: 8/11/2022 Time Received: 11:01 AM Project: AIR Reporting Date: 11/10/2022 Received Temperature: 23.0 °C
Sample ID: AL06885 Facility Name: SOUTH DEKALB QA Site ID: 013-089-0002 Location ID: Location Descr:	

ANALYTE	PARAMETER CODE	NOTE	EPA METHOD	RESULT	UNITS	QUALIFIER RL	ANALYSIS ANALYST	DATE	MCL or QC Range
ETO by EPA Method TO-15 QC Batch 198145									
Bromofluorobenzene(Surrogate QC Std.)			EPA TO-15	9.2099	ppbV		KL	8/12/2022	8 to 12
Ethylene Oxide			EPA TO-15	0.0874	ppbV	0.0232	KL	8/12/2022	
ETO Results by EPA Method TO-15									
Bromofluorobenzene(Surrogate QC Std.)			EPA TO-15	65.8785	ug/m3		KL	8/12/2022	57.22 to 85.84
Ethylene Oxide			EPA TO-15	0.1575	ug/m3	0.0418	KL	8/12/2022	
ETO NATTS QA Replicate Precision									
Ethylene Oxide			EPA TO-15	5.65	%RPD		KL	8/12/2022	25
ETO QA Replicate Result									
Bromofluorobenzene(Surrogate QC Std.)			EPA TO-15	9.1847	ppbV		KL	8/12/2022	8 to 12
Ethylene Oxide			EPA TO-15	0.0826	ppbV	0.0232	KL	8/12/2022	

COMMENTS: \$ETO received in the lab at 4.4 psi.

ug/L: micrograms/liter
 mg/L: milligrams/liter
 mg/kg: milligrams/kilogram
 ug/kg: micrograms/kilogram
 ug/g: micrograms/gram
 ppm: parts per million
 ppb: parts per billion
 org/L: organisms/liter

<: less than
 MCL: Maximum Contaminant Level
 RL: Reporting Limit
 LSPC: result less than lower specification
 USPC: result greater than upper specification
 TIE: Tentatively Identified or Estimated
 VIOL: Violation (result exceeds MCL)

Laboratory Contacts:

Lab Director: Mark Tolbert 470-524-0577
 Inorganics: Carmen Pyles 470-524-0629
 Metals: Shene Jones 470-524-0544
 Organics: Mary Bowman 470-524-0639
 GC Mass Spec: Ralph Schulz 470-524-0684
 Microbiology: Mary Bowman 470-524-0709

**GEORGIA DEPARTMENT OF NATURAL RESOURCES
ENVIRONMENTAL PROTECTION DIVISION**

5804 Peachtree Corners East, Norcross, GA 30092-3403
(678) 248-7384

LABORATORY REPORT

TO: Ga EPD Air Program EPD Air Prot Ambient Monitoring 4244 International Pkwy Ste 120 Atlanta, GA 30354	Date Collected: 8/21/2022
	Time Collected: 0:00
Sample ID: AL06886 Facility Name: COBB S2 Site ID: S2 Location ID: Location Descr:	Sample Collector: J. BRYANT
	Chlorination:
	Sample Type:
	Received By: HZ
	Date Received: 8/30/2022
	Time Received: 11:15 AM
	Project: DATA STUDY
	Reporting Date: 11/10/2022
	Received Temperature: 20.5 °C

ANALYTE	PARAMETER	EPA			QUALIFIER	ANALYSIS		MCL or	
	CODE	NOTE	METHOD	RESULT	UNITS	RL	ANALYST	DATE	QC Range
ETO by EPA Method TO-15 QC Batch 198579									
Bromofluorobenzene(Surrogate QC Std.)			EPA TO-15	9.6170	ppbV		KL	9/1/2022	8 to 12
Ethylene Oxide			EPA TO-15	0.0759	ppbV	0.0232	KL	9/1/2022	
ETO Results by EPA Method TO-15									
Bromofluorobenzene(Surrogate QC Std.)			EPA TO-15	68.7905	ug/m3		KL	9/1/2022	57.22 to 85.84
Ethylene Oxide			EPA TO-15	0.1368	ug/m3	0.0418	KL	9/1/2022	

COMMENTS: \$ETO received in the lab at 7 in Hg.

ug/L: micrograms/liter
mg/L: milligrams/liter
mg/kg: milligrams/kilogram
ug/kg: micrograms/kilogram
ug/g: micrograms/gram
ppm: parts per million
ppb: parts per billion
org/L: organisms/liter

<: less than
MCL: Maximum Contaminant Level
RL: Reporting Limit
LSPC: result less than lower specification
USPC: result greater than upper specification
TIE: Tentatively Identified or Estimated
VIOL: Violation (result exceeds MCL)

Laboratory Contacts:

Lab Director:	Mark Tolbert	470-524-0577
Inorganics:	Carmen Pyles	470-524-0629
Metals:	Shene Jones	470-524-0544
Organics:	Mary Bowman	470-524-0639
GC Mass Spec:	Ralph Schulz	470-524-0684
Microbiology:	Mary Bowman	470-524-0709

**GEORGIA DEPARTMENT OF NATURAL RESOURCES
ENVIRONMENTAL PROTECTION DIVISION**

5804 Peachtree Corners East, Norcross, GA 30092-3403
(678) 248-7384

LABORATORY REPORT

TO: Ga EPD Air Program EPD Air Prot Ambient Monitoring 4244 International Pkwy Ste 120 Atlanta, GA 30354	Date Collected: 8/18/2022
	Time Collected: 0:00
Sample ID: AL08741 Facility Name: COVINGTON C2, C3-SA FB Site ID: C2 Location ID: QCCAN Location Descr:	Sample Collector: J. BRYANT
	Chlorination:
	Sample Type: Trip Blank
	Received By: KL
	Date Received: 8/30/2022
	Time Received: 11:15 AM
	Project: DATA STUDY
	Reporting Date: 11/10/2022
	Received Temperature: 21.9 °C

ANALYTE	PARAMETER		EPA	RESULT	QUALIFIER		ANALYSIS		MCL or	
	CODE	NOTE	METHOD		UNITS	RL	ANALYST	DATE	QC Range	
ETO by EPA Method TO-15 QC Batch 198579										
Bromofluorobenzene(Surrogate QC Std.)			EPA TO-15	9.8241	ppbV			KL	9/1/2022	8 to 12
Ethylene Oxide			EPA TO-15	0	ppbV	ND	0.0232	KL	9/1/2022	
ETO Results by EPA Method TO-15										
Bromofluorobenzene(Surrogate QC Std.)			EPA TO-15	70.2719	ug/m3			KL	9/1/2022	57.22 to 85.84
Ethylene Oxide			EPA TO-15	0	ug/m3	ND	0.0418	KL	9/1/2022	

COMMENTS: \$ETO received in the lab at 29 in Hg.

ug/L: micrograms/liter
mg/L: milligrams/liter
mg/kg: milligrams/kilogram
ug/kg: micrograms/kilogram
ug/g: micrograms/gram
ppm: parts per million
ppb: parts per billion
org/L: organisms/liter

<: less than
MCL: Maximum Contaminant Level
RL: Reporting Limit
LSPC: result less than lower specification
USPC: result greater than upper specification
TIE: Tentatively Identified or Estimated
VIOL: Violation (result exceeds MCL)

Laboratory Contacts:

Lab Director:	Mark Tolbert	470-524-0577
Inorganics:	Carmen Pyles	470-524-0629
Metals:	Shene Jones	470-524-0544
Organics:	Mary Bowman	470-524-0639
GC Mass Spec:	Ralph Schulz	470-524-0684
Microbiology:	Mary Bowman	470-524-0709

**GEORGIA DEPARTMENT OF NATURAL RESOURCES
ENVIRONMENTAL PROTECTION DIVISION**

5804 Peachtree Corners East, Norcross, GA 30092-3403
(678) 248-7384

LABORATORY REPORT

TO: Ga EPD Air Program EPD Air Prot Ambient Monitoring 4244 International Pkwy Ste 120 Atlanta, GA 30354	Date Collected: 8/21/2022 Time Collected: 0:00 Sample Collector: H. STREET Canister Number: 114311 Canister Cleaned: 8/8/2022 Received By: KL
	Date Received: 8/23/2022 Time Received: 10:58 AM Project: AIR Reporting Date: 11/10/2022 Received Temperature: 20.9 °C
Sample ID: AL08746 Facility Name: SOUTH DEKALB Site ID: 013-089-0002 Location ID: Location Descr:	

ANALYTE	PARAMETER	EPA	RESULT	QUALIFIER		ANALYSIS		MCL or	
	CODE	NOTE		METHOD	UNITS	RL	ANALYST	DATE	QC Range
ETO by EPA Method TO-15 QC Batch 198538									
Bromofluorobenzene(Surrogate QC Std.)			EPA TO-15	9.6351	ppbV		KL	8/30/2022	8 to 12
Ethylene Oxide			EPA TO-15	0.0613	ppbV	SQ 0.0232	KL	8/30/2022	
ETO Results by EPA Method TO-15									
Bromofluorobenzene(Surrogate QC Std.)			EPA TO-15	68.92	ug/m3		KL	8/30/2022	57.22 to 85.84
Ethylene Oxide			EPA TO-15	0.1105	ug/m3	SQ 0.0418	KL	8/30/2022	

COMMENTS: \$ETO received in the lab at 5.6 psi.

ug/L: micrograms/liter
 mg/L: milligrams/liter
 mg/kg: milligrams/kilogram
 ug/kg: micrograms/kilogram
 ug/g: micrograms/gram
 ppm: parts per million
 ppb: parts per billion
 org/L: organisms/liter

<: less than
 MCL: Maximum Contaminant Level
 RL: Reporting Limit
 LSPC: result less than lower specification
 USPC: result greater than upper specification
 TIE: Tentatively Identified or Estimated
 VIOL: Violation (result exceeds MCL)

Laboratory Contacts:

Lab Director: Mark Tolbert 470-524-0577
 Inorganics: Carmen Pyles 470-524-0629
 Metals: Shene Jones 470-524-0544
 Organics: Mary Bowman 470-524-0639
 GC Mass Spec: Ralph Schulz 470-524-0684
 Microbiology: Mary Bowman 470-524-0709

**GEORGIA DEPARTMENT OF NATURAL RESOURCES
ENVIRONMENTAL PROTECTION DIVISION**

5804 Peachtree Corners East, Norcross, GA 30092-3403
(678) 248-7384

LABORATORY REPORT

TO: Ga EPD Air Program EPD Air Prot Ambient Monitoring 4244 International Pkwy Ste 120 Atlanta, GA 30354	Date Collected: 8/21/2022 Time Collected: 0:00 Sample Collector: J. BRYANT Chlorination: Sample Type: Received By: KL
	Date Received: 8/30/2022 Time Received: 11:15 AM Project: DATA STUDY Reporting Date: 11/10/2022 Received Temperature: 24.7 °C
Sample ID: AL08749 Facility Name: COVINGTON C2 Site ID: C2 Location ID: QCCAN Location Descr:	

ANALYTE	PARAMETER	EPA	RESULT	QUALIFIER		ANALYSIS		MCL or	
	CODE	NOTE		METHOD	UNITS	RL	ANALYST	DATE	QC Range
ETO by EPA Method TO-15 QC Batch 198579									
Bromofluorobenzene(Surrogate QC Std.)			EPA TO-15	9.5397	ppbV		KL	9/1/2022	8 to 12
Ethylene Oxide			EPA TO-15	0.0401	ppbV	SQ	0.0232	KL	9/1/2022
ETO Results by EPA Method TO-15									
Bromofluorobenzene(Surrogate QC Std.)			EPA TO-15	68.2376	ug/m3		KL	9/1/2022	57.22 to 85.84
Ethylene Oxide			EPA TO-15	0.0723	ug/m3	SQ	0.0418	KL	9/1/2022

COMMENTS: \$ETO received in the lab at 5 in Hg.

ug/L: micrograms/liter
 mg/L: milligrams/liter
 mg/kg: milligrams/kilogram
 ug/kg: micrograms/kilogram
 ug/g: micrograms/gram
 ppm: parts per million
 ppb: parts per billion
 org/L: organisms/liter

<: less than
 MCL: Maximum Contaminant Level
 RL: Reporting Limit
 LSPC: result less than lower specification
 USPC: result greater than upper specification
 TIE: Tentatively Identified or Estimated
 VIOL: Violation (result exceeds MCL)

Laboratory Contacts:

Lab Director:	Mark Tolbert	470-524-0577
Inorganics:	Carmen Pyles	470-524-0629
Metals:	Shene Jones	470-524-0544
Organics:	Mary Bowman	470-524-0639
GC Mass Spec:	Ralph Schulz	470-524-0684
Microbiology:	Mary Bowman	470-524-0709

**GEORGIA DEPARTMENT OF NATURAL RESOURCES
ENVIRONMENTAL PROTECTION DIVISION**

5804 Peachtree Corners East, Norcross, GA 30092-3403
(678) 248-7384

LABORATORY REPORT

TO: Ga EPD Air Program EPD Air Prot Ambient Monitoring 4244 International Pkwy Ste 120 Atlanta, GA 30354	Date Collected: 8/21/2022
	Time Collected: 0:00
Sample ID: AL08751 Facility Name: FULTON F1-SA Site ID: F1-SA Location ID: Location Descr:	Sample Collector: J. BRYANT
	Chlorination:
	Sample Type:
	Received By: KL
	Date Received: 8/30/2022
	Time Received: 11:15 AM
	Project: DATA STUDY
	Reporting Date: 11/10/2022
	Received Temperature: 20.7 °C

ANALYTE	PARAMETER		EPA	RESULT	UNITS	QUALIFIER	ANALYSIS		MCL or	
	CODE	NOTE	METHOD			RL	ANALYST	DATE	QC Range	
ETO by EPA Method TO-15 QC Batch 198579										
Bromofluorobenzene(Surrogate QC Std.)			EPA TO-15	9.4714	ppbV		KL	9/1/2022	8 to	12
Ethylene Oxide			EPA TO-15	0.1788	ppbV	0.0232	KL	9/1/2022		
ETO Results by EPA Method TO-15										
Bromofluorobenzene(Surrogate QC Std.)			EPA TO-15	67.749	ug/m3		KL	9/1/2022	57.22 to	85.84
Ethylene Oxide			EPA TO-15	0.3223	ug/m3	0.0418	KL	9/1/2022		

COMMENTS: \$ETO received in the lab at 5 in Hg.

ug/L: micrograms/liter
mg/L: milligrams/liter
mg/kg: milligrams/kilogram
ug/kg: micrograms/kilogram
ug/g: micrograms/gram
ppm: parts per million
ppb: parts per billion
org/L: organisms/liter

<: less than
MCL: Maximum Contaminant Level
RL: Reporting Limit
LSPC: result less than lower specification
USPC: result greater than upper specification
TIE: Tentatively Identified or Estimated
VIOL: Violation (result exceeds MCL)

Laboratory Contacts:

Lab Director:	Mark Tolbert	470-524-0577
Inorganics:	Carmen Pyles	470-524-0629
Metals:	Shene Jones	470-524-0544
Organics:	Mary Bowman	470-524-0639
GC Mass Spec:	Ralph Schulz	470-524-0684
Microbiology:	Mary Bowman	470-524-0709

**GEORGIA DEPARTMENT OF NATURAL RESOURCES
ENVIRONMENTAL PROTECTION DIVISION**

5804 Peachtree Corners East, Norcross, GA 30092-3403
(678) 248-7384

LABORATORY REPORT

TO: Ga EPD Air Program EPD Air Prot Ambient Monitoring 4244 International Pkwy Ste 120 Atlanta, GA 30354	Date Collected: 8/21/2022
	Time Collected: 0:00
Sample ID: AL08752 Facility Name: COVINGTON C3-SA Site ID: C3-SA Location ID: Location Descr:	Sample Collector: J. BRYANT
	Chlorination:
	Sample Type:
	Received By: KL
	Date Received: 8/30/2022
	Time Received: 11:15 AM
	Project: DATA STUDY
	Reporting Date: 11/10/2022
	Received Temperature: 20.9 °C

ANALYTE	PARAMETER		EPA	RESULT	UNITS	QUALIFIER	ANALYSIS		MCL or	
	CODE	NOTE	METHOD			RL	ANALYST	DATE	QC Range	
ETO by EPA Method TO-15 QC Batch 198579										
Bromofluorobenzene(Surrogate QC Std.)			EPA TO-15	9.5083	ppbV		KL	9/1/2022	8 to	12
Ethylene Oxide			EPA TO-15	0.1924	ppbV	0.0232	KL	9/1/2022		
ETO Results by EPA Method TO-15										
Bromofluorobenzene(Surrogate QC Std.)			EPA TO-15	68.013	ug/m3		KL	9/1/2022	57.22 to	85.84
Ethylene Oxide			EPA TO-15	0.3468	ug/m3	0.0418	KL	9/1/2022		

COMMENTS: \$ETO received in the lab at 6 in Hg.

ug/L: micrograms/liter
mg/L: milligrams/liter
mg/kg: milligrams/kilogram
ug/kg: micrograms/kilogram
ug/g: micrograms/gram
ppm: parts per million
ppb: parts per billion
org/L: organisms/liter

<: less than
MCL: Maximum Contaminant Level
RL: Reporting Limit
LSPC: result less than lower specification
USPC: result greater than upper specification
TIE: Tentatively Identified or Estimated
VIOL: Violation (result exceeds MCL)

Laboratory Contacts:

Lab Director:	Mark Tolbert	470-524-0577
Inorganics:	Carmen Pyles	470-524-0629
Metals:	Shene Jones	470-524-0544
Organics:	Mary Bowman	470-524-0639
GC Mass Spec:	Ralph Schulz	470-524-0684
Microbiology:	Mary Bowman	470-524-0709

**GEORGIA DEPARTMENT OF NATURAL RESOURCES
ENVIRONMENTAL PROTECTION DIVISION**

5804 Peachtree Corners East, Norcross, GA 30092-3403
(678) 248-7384

LABORATORY REPORT

TO: Ga EPD Air Program EPD Air Prot Ambient Monitoring 4244 International Pkwy Ste 120 Atlanta, GA 30354	Date Collected: 8/19/2022
	Time Collected: 0:00
Sample ID: AL08753 Facility Name: FULTON F2, F1-SA FB Site ID: F2 Location ID: Location Descr:	Sample Collector: J. BRYANT
	Chlorination:
	Sample Type: Trip Blank
	Received By: KL
	Date Received: 8/30/2022
	Time Received: 11:15 AM
	Project: DATA STUDY
	Reporting Date: 11/10/2022
	Received Temperature: 21.8 °C

ANALYTE	PARAMETER	EPA	QUALIFIER			ANALYSIS		MCL or	
	CODE	NOTE	METHOD	RESULT	UNITS	RL	ANALYST	DATE	QC Range
ETO by EPA Method TO-15 QC Batch 198579									
Bromofluorobenzene(Surrogate QC Std.)			EPA TO-15	9.8210	ppbV		KL	9/1/2022	8 to 12
Ethylene Oxide			EPA TO-15	0	ppbV	ND 0.0232	KL	9/1/2022	
ETO Results by EPA Method TO-15									
Bromofluorobenzene(Surrogate QC Std.)			EPA TO-15	70.2497	ug/m3		KL	9/1/2022	57.22 to 85.84
Ethylene Oxide			EPA TO-15	0	ug/m3	ND 0.0418	KL	9/1/2022	

COMMENTS: \$ETO received in the lab at 29 in Hg.

ug/L: micrograms/liter
mg/L: milligrams/liter
mg/kg: milligrams/kilogram
ug/kg: micrograms/kilogram
ug/g: micrograms/gram
ppm: parts per million
ppb: parts per billion
org/L: organisms/liter

<: less than
MCL: Maximum Contaminant Level
RL: Reporting Limit
LSPC: result less than lower specification
USPC: result greater than upper specification
TIE: Tentatively Identified or Estimated
VIOL: Violation (result exceeds MCL)

Laboratory Contacts:

Lab Director:	Mark Tolbert	470-524-0577
Inorganics:	Carmen Pyles	470-524-0629
Metals:	Shene Jones	470-524-0544
Organics:	Mary Bowman	470-524-0639
GC Mass Spec:	Ralph Schulz	470-524-0684
Microbiology:	Mary Bowman	470-524-0709

**GEORGIA DEPARTMENT OF NATURAL RESOURCES
ENVIRONMENTAL PROTECTION DIVISION**

5804 Peachtree Corners East, Norcross, GA 30092-3403
(678) 248-7384

LABORATORY REPORT

TO: Ga EPD Air Program EPD Air Prot Ambient Monitoring 4244 International Pkwy Ste 120 Atlanta, GA 30354	Date Collected: 8/21/2022
	Time Collected: 0:00
Sample ID: AL08754 Facility Name: GENERAL COFFEE Site ID: 013-069-0002 Location ID: Location Descr:	Sample Collector: C KNOX
	Chlorination:
	Sample Type:
	Received By: KL
	Date Received: 8/29/2022
	Time Received: 9:45 AM
	Project: DATA STUDY
	Reporting Date: 11/10/2022
	Received Temperature: 25.5 °C

ANALYTE	PARAMETER		EPA	RESULT	QUALIFIER		ANALYSIS		MCL or	
	CODE	NOTE	METHOD		UNITS	RL	ANALYST	DATE	QC Range	
ETO by EPA Method TO-15 QC Batch 198538										
Bromofluorobenzene(Surrogate QC Std.)			EPA TO-15	8.9346	ppbV		KL	8/30/2022	8 to	12
Ethylene Oxide			EPA TO-15	0.0471	ppbV	SQ 2	0.0232	KL	8/30/2022	
ETO Results by EPA Method TO-15										
Bromofluorobenzene(Surrogate QC Std.)			EPA TO-15	63.9093	ug/m3		KL	8/30/2022	57.22 to	85.84
Ethylene Oxide			EPA TO-15	0.0849	ug/m3	SQ 2	0.0418	KL	8/30/2022	

COMMENTS: \$ETO received in the lab at 20 psi. Pressure difference of >0.5 psi between receipt from field and receipt in lab.

ug/L: micrograms/liter
mg/L: milligrams/liter
mg/kg: milligrams/kilogram
ug/kg: micrograms/kilogram
ug/g: micrograms/gram
ppm: parts per million
ppb: parts per billion
org/L: organisms/liter

<: less than
MCL: Maximum Contaminant Level
RL: Reporting Limit
LSPC: result less than lower specification
USPC: result greater than upper specification
TIE: Tentatively Identified or Estimated
VIOL: Violation (result exceeds MCL)

Laboratory Contacts:

Lab Director:	Mark Tolbert	470-524-0577
Inorganics:	Carmen Pyles	470-524-0629
Metals:	Shene Jones	470-524-0544
Organics:	Mary Bowman	470-524-0639
GC Mass Spec:	Ralph Schulz	470-524-0684
Microbiology:	Mary Bowman	470-524-0709

**GEORGIA DEPARTMENT OF NATURAL RESOURCES
ENVIRONMENTAL PROTECTION DIVISION**

5804 Peachtree Corners East, Norcross, GA 30092-3403
(678) 248-7384

LABORATORY REPORT

TO: Ga EPD Air Program EPD Air Prot Ambient Monitoring 4244 International Pkwy Ste 120 Atlanta, GA 30354	Date Collected: 8/27/2022 Time Collected: 0:00 Sample Collector: H. STREET Canister Number: 114381 Canister Cleaned: 8/8/2022 Received By: KL
	Date Received: 8/30/2022 Time Received: 11:14 AM Project: AIR Reporting Date: 11/10/2022 Received Temperature: 24.2 °C
Sample ID: AL08755 Facility Name: SOUTH DEKALB Site ID: 013-089-0002 Location ID: Location Descr:	

ANALYTE	PARAMETER	EPA	RESULT	QUALIFIER	ANALYSIS	MCL or			
	CODE	NOTE		METHOD	UNITS		RL	ANALYST	DATE
ETO by EPA Method TO-15 QC Batch 198579									
Bromofluorobenzene(Surrogate QC Std.)			EPA TO-15	9.2008	ppbV		KL	9/1/2022	8 to 12
Ethylene Oxide			EPA TO-15	0.0751	ppbV	0.0232	KL	9/1/2022	
ETO Results by EPA Method TO-15									
Bromofluorobenzene(Surrogate QC Std.)			EPA TO-15	65.8134	ug/m3		KL	9/1/2022	57.22 to 85.84
Ethylene Oxide			EPA TO-15	0.1354	ug/m3	0.0418	KL	9/1/2022	

COMMENTS: \$ETO received in the lab at 4.4 psi.

ug/L: micrograms/liter
 mg/L: milligrams/liter
 mg/kg: milligrams/kilogram
 ug/kg: micrograms/kilogram
 ug/g: micrograms/gram
 ppm: parts per million
 ppb: parts per billion
 org/L: organisms/liter

<: less than
 MCL: Maximum Contaminant Level
 RL: Reporting Limit
 LSPC: result less than lower specification
 USPC: result greater than upper specification
 TIE: Tentatively Identified or Estimated
 VIOL: Violation (result exceeds MCL)

Laboratory Contacts:

Lab Director: Mark Tolbert 470-524-0577
 Inorganics: Carmen Pyles 470-524-0629
 Metals: Shene Jones 470-524-0544
 Organics: Mary Bowman 470-524-0639
 GC Mass Spec: Ralph Schulz 470-524-0684
 Microbiology: Mary Bowman 470-524-0709

**GEORGIA DEPARTMENT OF NATURAL RESOURCES
ENVIRONMENTAL PROTECTION DIVISION**

5804 Peachtree Corners East, Norcross, GA 30092-3403
(678) 248-7384

LABORATORY REPORT

TO: Ga EPD Air Program EPD Air Prot Ambient Monitoring 4244 International Pkwy Ste 120 Atlanta, GA 30354	Date Collected: 8/21/2022
	Time Collected: 0:00
Sample ID: AL08756 Facility Name: FULTON F2 Site ID: F2 Location ID: Location Descr:	Sample Collector: J. BRYANT
	Chlorination:
	Sample Type:
	Received By: KL
	Date Received: 8/30/2022
	Time Received: 11:15 AM
	Project: DATA STUDY
	Reporting Date: 11/10/2022
	Received Temperature: 22.6 °C

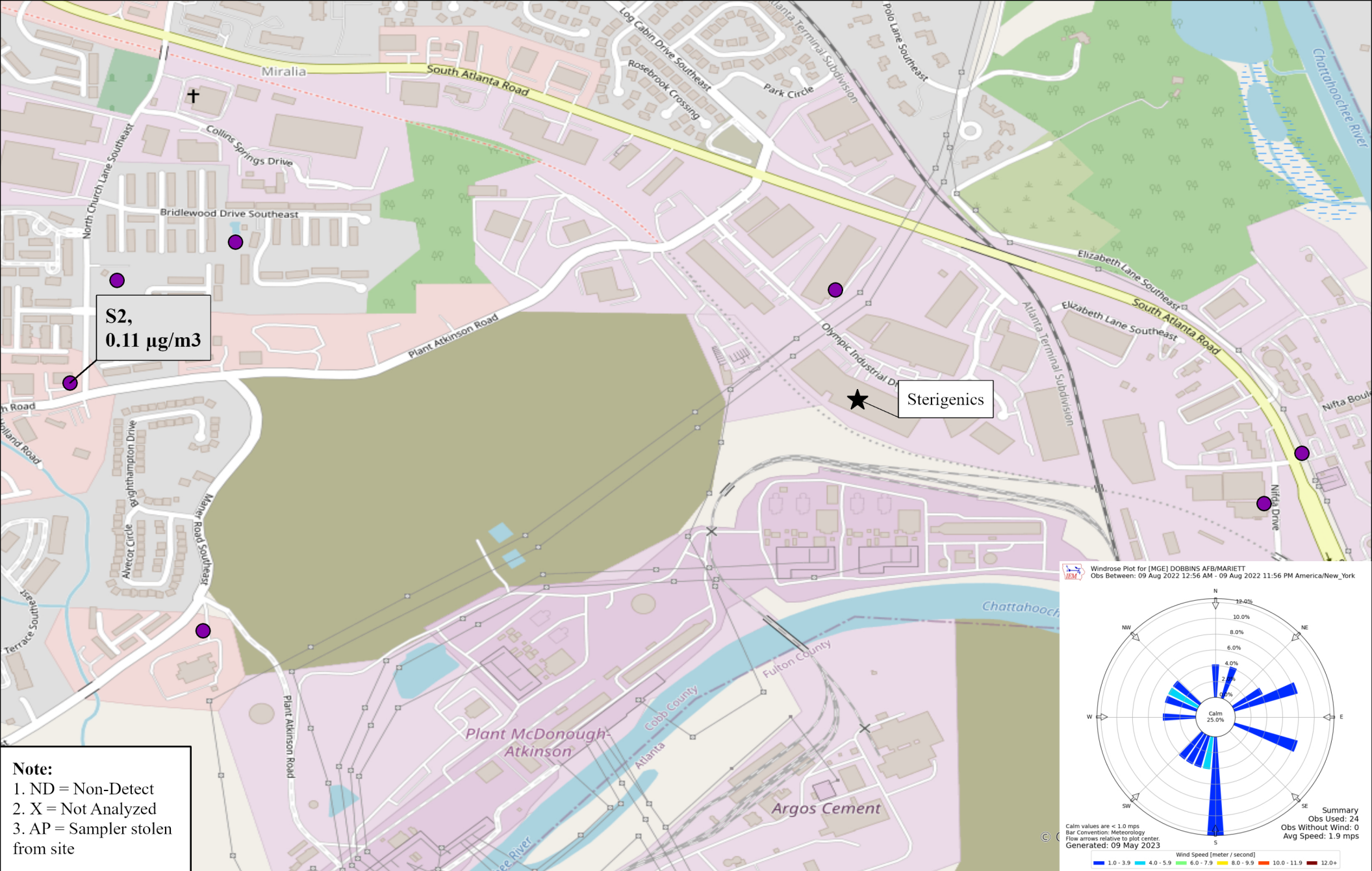
ANALYTE	PARAMETER	EPA				QUALIFIER	ANALYSIS		MCL or	
	CODE	NOTE	METHOD	RESULT	UNITS	RL	ANALYST	DATE	QC Range	
ETO by EPA Method TO-15 QC Batch 198579										
Bromofluorobenzene(Surrogate QC Std.)			EPA TO-15	9.5311	ppbV		KL	9/1/2022	8 to	12
Ethylene Oxide			EPA TO-15	0.2387	ppbV	0.0232	KL	9/1/2022		
ETO Results by EPA Method TO-15										
Bromofluorobenzene(Surrogate QC Std.)			EPA TO-15	68.1761	ug/m3		KL	9/1/2022	57.22 to	85.84
Ethylene Oxide			EPA TO-15	0.4303	ug/m3	0.0418	KL	9/1/2022		
COMMENTS: \$ETO received in the lab at 5.5 in Hg.										

ug/L: micrograms/liter
mg/L: milligrams/liter
mg/kg: milligrams/kilogram
ug/kg: micrograms/kilogram
ug/g: micrograms/gram
ppm: parts per million
ppb: parts per billion
org/L: organisms/liter

<: less than
MCL: Maximum Contaminant Level
RL: Reporting Limit
LSPC: result less than lower specification
USPC: result greater than upper specification
TIE: Tentatively Identified or Estimated
VIOL: Violation (result exceeds MCL)

Laboratory Contacts:

Lab Director:	Mark Tolbert	470-524-0577
Inorganics:	Carmen Pyles	470-524-0629
Metals:	Shene Jones	470-524-0544
Organics:	Mary Bowman	470-524-0639
GC Mass Spec:	Ralph Schulz	470-524-0684
Microbiology:	Mary Bowman	470-524-0709



0 0.08 0.17
Miles



Site ID, Concentration (µg/m3)

Ethylene Oxide Sampling
Cobb County, GA

08/09/2022

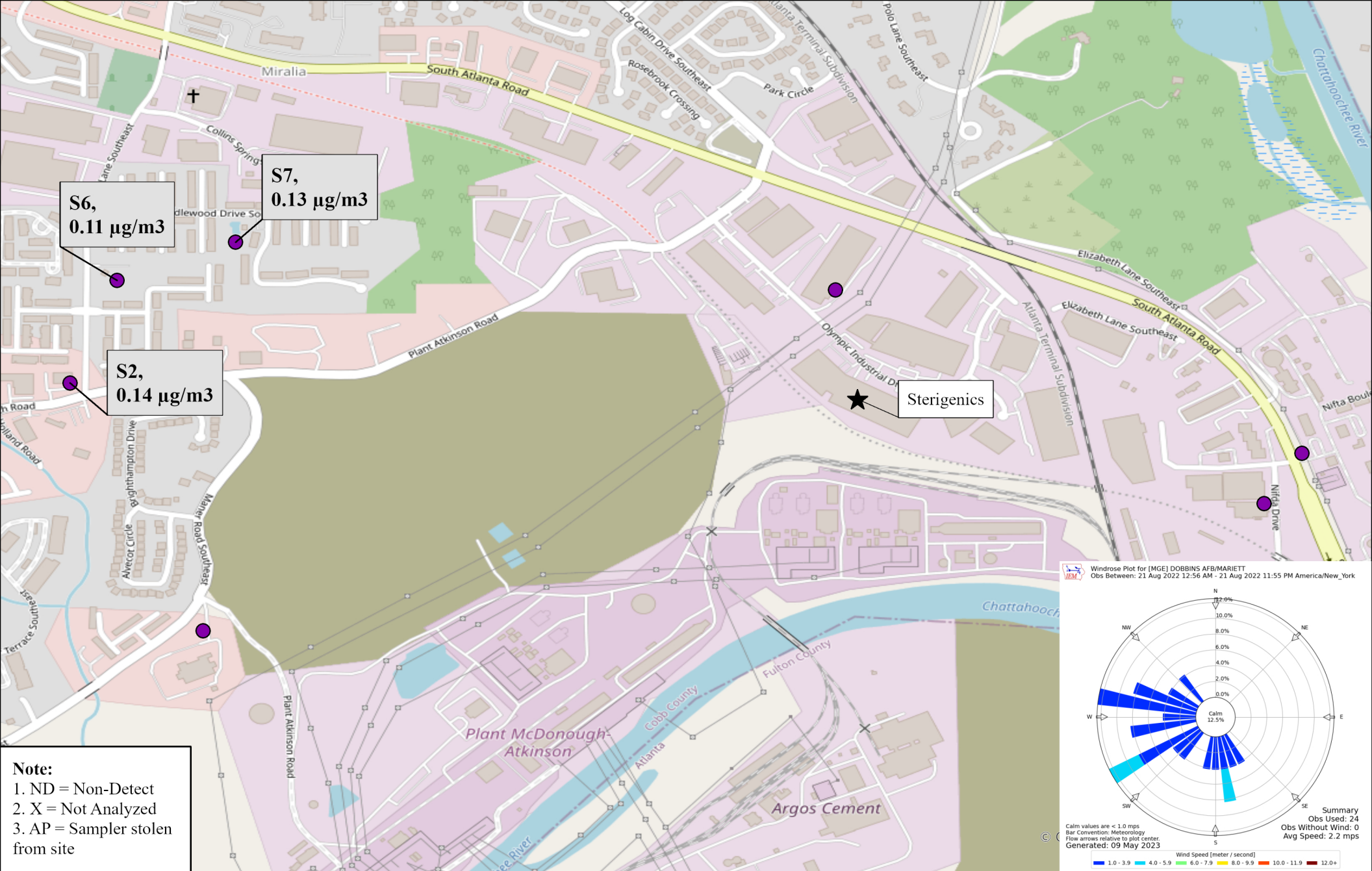
Sampled By: Georgia Environmental Protection Division

Analyzed By: Georgia Environmental Protection Division



GEORGIA
DEPARTMENT OF NATURAL RESOURCES

ENVIRONMENTAL PROTECTION DIVISION



0 0.08 0.17
 Miles



Site ID, Concentration ($\mu\text{g}/\text{m}^3$)

Ethylene Oxide Sampling
 Cobb County, GA

08/21/2022

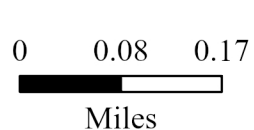
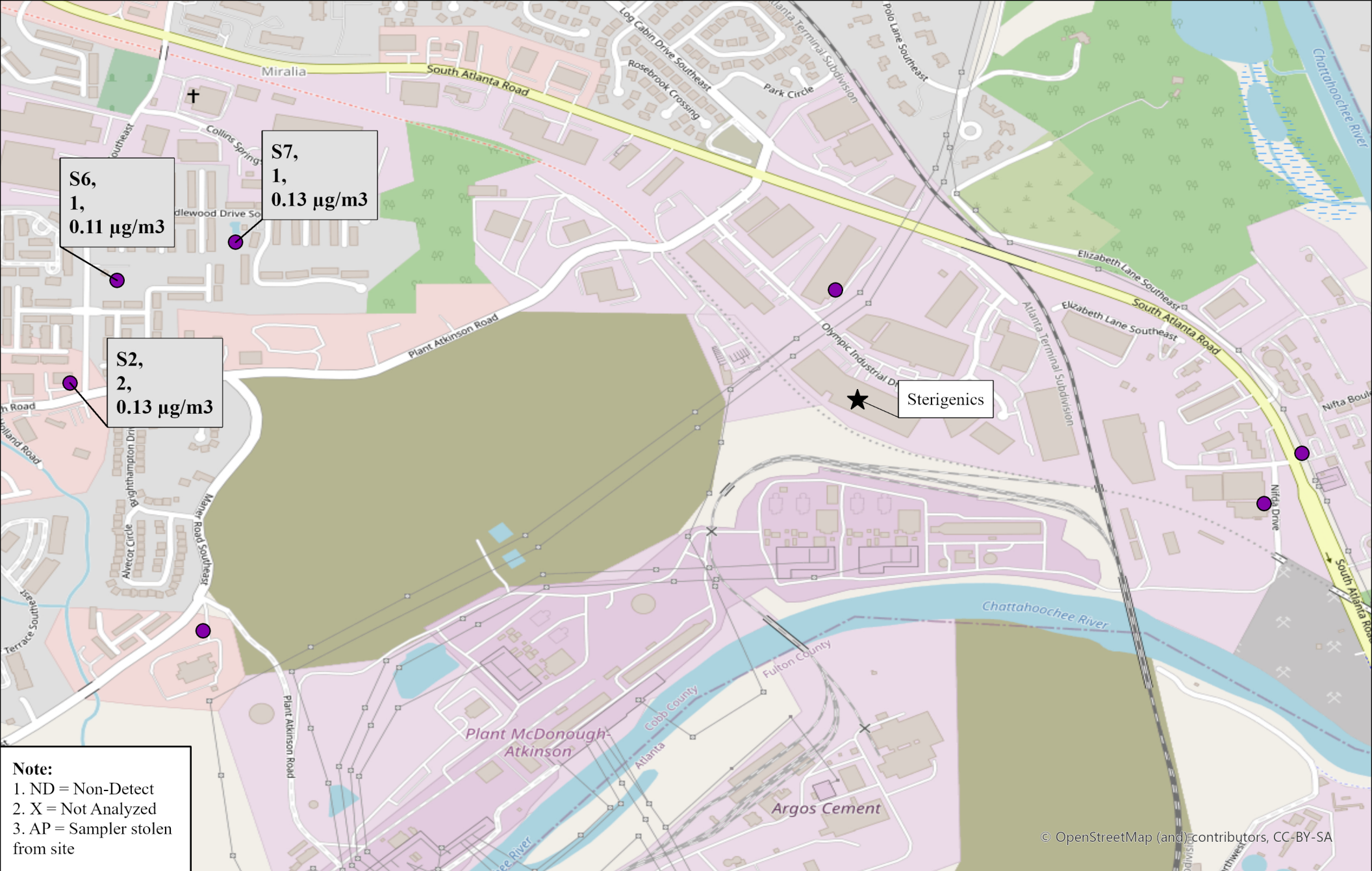
Sampled By: Georgia Environmental Protection Division

Analyzed By: Georgia Environmental Protection Division



GEORGIA
 DEPARTMENT OF NATURAL RESOURCES

ENVIRONMENTAL PROTECTION DIVISION



**Site ID, Number of Samples,
Concentration ($\mu\text{g}/\text{m}^3$)**

Ethylene Oxide Sampling
Cobb County, GA

August 2022 Site Average Values
 Note: Not detectable values were included in average calculations as a value of 0.
 Sampled By: Georgia Environmental Protection Division
 Analyzed By: Georgia Environmental Protection Division



GEORGIA
DEPARTMENT OF NATURAL RESOURCES

ENVIRONMENTAL PROTECTION DIVISION