



ENVIRONMENTAL PROTECTION DIVISION

Richard E. Dunn, Director

EPD Director's Office

2 Martin Luther King, Jr. Drive
Suite 1456, East Tower
Atlanta, Georgia 30334
404-656-4713

May 3, 2023

MEMORANDUM

To: James Boylan, Air Branch Chief *JB*

Through: DeAnna Oser, Assistant Branch Chief

From: Jaime Gore, Operations 1 Unit Manager

RE: Cobb – July 4 – July 28, 2022, Sampling Results for Ethylene Oxide

Samples of Ethylene Oxide (EtO) were collected during the period of July 4 – July 28, 2022, by the Ambient Monitoring Program in the Cobb area to characterize the EtO concentration. Each of the samples were sent to the Georgia Environmental Protection Division Laboratory (EPD) for analysis. The Qualifier code of “3” was given to samples to indicate that integrity of the field data may have been compromised. The Qualifier code of “2” was given to samples to indicate that the collection deviated from established procedures, but the integrity of the sample was not compromised. The Qualifier code of “SQ” indicates the analysis of the sample was above the method detection limit but below the practical quantification limit.

Location	Date	Qualifier	EtO Concentration ($\mu\text{g}/\text{m}^3$)
S2	07/04/2022	3	0.15
S2	07/16/2022	3, SQ	0.08
S2	07/28/2022	3, SQ	0.09
S2 QA	07/04/2022	3	0.15
S6 SA	07/16/2022	2	0.14
S7 SA	07/16/2022	2	0.21

If you have any questions, please let me know.

JCG

**GEORGIA DEPARTMENT OF NATURAL RESOURCES
ENVIRONMENTAL PROTECTION DIVISION**

5804 Peachtree Corners East, Norcross, GA 30092-3403
(678) 248-7384

LABORATORY REPORT

TO: Ga EPD Air Program EPD Air Prot Ambient Monitoring 4244 International Pkwy Ste 120 Atlanta, GA 30354	Date Collected: 7/4/2022 Time Collected: 0:00 Sample Collector: J. BRYANT Chlorination: Sample Type: Received By: HZ
Sample ID: AL03105 Facility Name: COBB S2-QA Site ID: S2-QA Location ID: QCCAN Location Descr:	Date Received: 7/12/2022 Time Received: 12:07 PM Project: DATA STUDY Reporting Date: 9/26/2022 Received Temperature: 24.3 °C

ANALYTE	PARAMETER CODE	NOTE	EPA METHOD	RESULT	UNITS	QUALIFIER RL	ANALYSIS ANALYST DATE	MCL or QC Range
ETO by EPA Method TO-15 QC Batch 197573								
Bromofluorobenzene(Surrogate QC Std.)			EPA TO-15	9.7554	ppbV		KL 7/14/2022	8 to 12
Ethylene Oxide			EPA TO-15	0.0830	ppbV	0.0232	KL 7/14/2022	
ETO Results by EPA Method TO-15								
Bromofluorobenzene(Surrogate QC Std.)			EPA TO-15	69.7805	ug/m3		KL 7/14/2022	57.22 to 85.84
Ethylene Oxide			EPA TO-15	0.1496	ug/m3	0.0418	KL 7/14/2022	

COMMENTS: \$ETO received in the lab at 6 in Hg.

ug/L: micrograms/liter
 mg/L: milligrams/liter
 mg/kg: milligrams/kilogram
 ug/kg: micrograms/kilogram
 ug/g: micrograms/gram
 ppm: parts per million
 ppb: parts per billion
 org/L: organisms/liter

<: less than
 MCL: Maximum Contaminant Level
 RL: Reporting Limit
 LSPC: result less than lower specification
 USPC: result greater than upper specification
 TIE: Tentatively Identified or Estimated
 VIOL: Violation (result exceeds MCL)

Laboratory Contacts:

Lab Director:	Mark Tolbert	470-524-0577
Inorganics:	Carmen Pyles	470-524-0629
Metals:	Shene Jones	470-524-0544
Organics:	Mary Bowman	470-524-0639
GC Mass Spec:	Ralph Schulz	470-524-0684
Microbiology:	Mary Bowman	470-524-0709

**GEORGIA DEPARTMENT OF NATURAL RESOURCES
ENVIRONMENTAL PROTECTION DIVISION**

5804 Peachtree Corners East, Norcross, GA 30092-3403
(678) 248-7384

LABORATORY REPORT

TO: Ga EPD Air Program EPD Air Prot Ambient Monitoring 4244 International Pkwy Ste 120 Atlanta, GA 30354	Date Collected: 7/10/2022 Time Collected: 0:00 Sample Collector: J. BRYANT Canister Number: 111218 Canister Cleaned: 6/13/2022 Received By: HZ
	Date Received: 7/12/2022 Time Received: 12:08 PM Project: AIR Reporting Date: 9/26/2022 Received Temperature: 24.5 °C
Sample ID: AL03106 Facility Name: SOUTH DEKALB Site ID: 013-089-0002 Location ID: Location Descr:	

ANALYTE	PARAMETER CODE	NOTE	EPA METHOD	RESULT	UNITS	QUALIFIER RL	ANALYSIS ANALYST	DATE	MCL or QC Range
ETO by EPA Method TO-15									
Bromofluorobenzene(Surrogate QC Std.)			EPA TO-15	AL	ppbV		KL	7/14/2022	8 to 12
Ethylene Oxide			EPA TO-15	AL	ppbV	0.0232	KL	7/14/2022	
ETO Results by EPA Method TO-15									
Bromofluorobenzene(Surrogate QC Std.)			EPA TO-15	AL	ug/m3		KL	7/14/2022	57.22 to 85.84
Ethylene Oxide			EPA TO-15	AL	ug/m3	0.0418	KL	7/14/2022	

COMMENTS: \$ETO received in the lab at 17 in Hg. VOID.

ug/L: micrograms/liter
 mg/L: milligrams/liter
 mg/kg: milligrams/kilogram
 ug/kg: micrograms/kilogram
 ug/g: micrograms/gram
 ppm: parts per million
 ppb: parts per billion
 org/L: organisms/liter

<: less than
 MCL: Maximum Contaminant Level
 RL: Reporting Limit
 LSPC: result less than lower specification
 USPC: result greater than upper specification
 TIE: Tentatively Identified or Estimated
 VIOL: Violation (result exceeds MCL)

Laboratory Contacts:

Lab Director:	Mark Tolbert	470-524-0577
Inorganics:	Carmen Pyles	470-524-0629
Metals:	Shene Jones	470-524-0544
Organics:	Mary Bowman	470-524-0639
GC Mass Spec:	Ralph Schulz	470-524-0684
Microbiology:	Mary Bowman	470-524-0709

**GEORGIA DEPARTMENT OF NATURAL RESOURCES
ENVIRONMENTAL PROTECTION DIVISION**

5804 Peachtree Corners East, Norcross, GA 30092-3403
(678) 248-7384

LABORATORY REPORT

TO: Ga EPD Air Program EPD Air Prot Ambient Monitoring 4244 International Pkwy Ste 120 Atlanta, GA 30354	Date Collected: 7/4/2022 Time Collected: 0:00 Sample Collector: J. BRYANT Chlorination: Sample Type: Received By: HZ
Sample ID: AL03113 Facility Name: COBB S2 Site ID: S2 Location ID: QCCAN Location Descr:	Date Received: 7/12/2022 Time Received: 12:08 PM Project: DATA STUDY Reporting Date: 9/26/2022 Received Temperature: 24.2 °C

ANALYTE	PARAMETER CODE NOTE	EPA METHOD	RESULT	UNITS	QUALIFIER RL	ANALYSIS ANALYST DATE	MCL or QC Range
ETO by EPA Method TO-15 QC Batch 197573							
Bromofluorobenzene(Surrogate QC Std.)		EPA TO-15	9.4743	ppbV		KL 7/14/2022	8 to 12
Ethylene Oxide		EPA TO-15	0.0847	ppbV	0.0232	KL 7/14/2022	
ETO Results by EPA Method TO-15							
Bromofluorobenzene(Surrogate QC Std.)		EPA TO-15	67.7698	ug/m3		KL 7/14/2022	57.22 to 85.84
Ethylene Oxide		EPA TO-15	0.1527	ug/m3	0.0418	KL 7/14/2022	

COMMENTS: \$ETO received in the lab at 6 in Hg.

ug/L: micrograms/liter
 mg/L: milligrams/liter
 mg/kg: milligrams/kilogram
 ug/kg: micrograms/kilogram
 ug/g: micrograms/gram
 ppm: parts per million
 ppb: parts per billion
 org/L: organisms/liter

<: less than
 MCL: Maximum Contaminant Level
 RL: Reporting Limit
 LSPC: result less than lower specification
 USPC: result greater than upper specification
 TIE: Tentatively Identified or Estimated
 VIOL: Violation (result exceeds MCL)

Laboratory Contacts:

Lab Director:	Mark Tolbert	470-524-0577
Inorganics:	Carmen Pyles	470-524-0629
Metals:	Shene Jones	470-524-0544
Organics:	Mary Bowman	470-524-0639
GC Mass Spec:	Ralph Schulz	470-524-0684
Microbiology:	Mary Bowman	470-524-0709

**GEORGIA DEPARTMENT OF NATURAL RESOURCES
ENVIRONMENTAL PROTECTION DIVISION**

5804 Peachtree Corners East, Norcross, GA 30092-3403
(678) 248-7384

LABORATORY REPORT

TO: Ga EPD Air Program EPD Air Prot Ambient Monitoring 4244 International Pkwy Ste 120 Atlanta, GA 30354	Date Collected: 7/4/2022 Time Collected: 0:00 Sample Collector: J. BRYANT Chlorination: Sample Type: Received By: HZ
Sample ID: AL03114 Facility Name: FULTON F2 Site ID: F2 Location ID: Location Descr:	Date Received: 7/12/2022 Time Received: 12:07 PM Project: DATA STUDY Reporting Date: 9/26/2022 Received Temperature: 24.0 °C

ANALYTE	PARAMETER CODE NOTE	EPA METHOD	RESULT	UNITS	QUALIFIER RL	ANALYSIS ANALYST DATE	MCL or QC Range
ETO by EPA Method TO-15 QC Batch 197573							
Bromofluorobenzene(Surrogate QC Std.)		EPA TO-15	9.6444	ppbV	KL	7/14/2022	8 to 12
Ethylene Oxide		EPA TO-15	0.0878	ppbV	0.0232	KL 7/14/2022	
ETO Results by EPA Method TO-15							
Bromofluorobenzene(Surrogate QC Std.)		EPA TO-15	68.9865	ug/m3	KL	7/14/2022	57.22 to 85.84
Ethylene Oxide		EPA TO-15	0.1583	ug/m3	0.0418	KL 7/14/2022	

COMMENTS: \$ETO received in the lab at 3 in Hg.

ug/L: micrograms/liter
 mg/L: milligrams/liter
 mg/kg: milligrams/kilogram
 ug/kg: micrograms/kilogram
 ug/g: micrograms/gram
 ppm: parts per million
 ppb: parts per billion
 org/L: organisms/liter

<: less than
 MCL: Maximum Contaminant Level
 RL: Reporting Limit
 LSPC: result less than lower specification
 USPC: result greater than upper specification
 TIE: Tentatively Identified or Estimated
 VIOL: Violation (result exceeds MCL)

Laboratory Contacts:

Lab Director:	Mark Tolbert	470-524-0577
Inorganics:	Carmen Pyles	470-524-0629
Metals:	Shene Jones	470-524-0544
Organics:	Mary Bowman	470-524-0639
GC Mass Spec:	Ralph Schulz	470-524-0684
Microbiology:	Mary Bowman	470-524-0709

**GEORGIA DEPARTMENT OF NATURAL RESOURCES
ENVIRONMENTAL PROTECTION DIVISION**

5804 Peachtree Corners East, Norcross, GA 30092-3403
(678) 248-7384

LABORATORY REPORT

TO: Ga EPD Air Program EPD Air Prot Ambient Monitoring 4244 International Pkwy Ste 120 Atlanta, GA 30354	Date Collected: 7/4/2022 Time Collected: 0:00 Sample Collector: H. STREET Canister Number: 114394 Canister Cleaned: 6/13/2022 Received By: HZ
Sample ID: AL03115 Facility Name: SOUTH DEKALB Site ID: 013-089-0002 Location ID: Location Descr:	Date Received: 7/7/2022 Time Received: 11:37 AM Project: AIR Reporting Date: 9/26/2022 Received Temperature: 21.9 °C

ANALYTE	PARAMETER CODE	NOTE	EPA METHOD	RESULT	UNITS	QUALIFIER RL	ANALYSIS ANALYST DATE	MCL or QC Range
ETO by EPA Method TO-15 QC Batch 197505								
Bromofluorobenzene(Surrogate QC Std.)			EPA TO-15	10.3417	ppbV		KL 7/12/2022	8 to 12
Ethylene Oxide			EPA TO-15	0.1075	ppbV	0.0232	KL 7/12/2022	
ETO Results by EPA Method TO-15								
Bromofluorobenzene(Surrogate QC Std.)			EPA TO-15	73.9743	ug/m3		KL 7/12/2022	57.22 to 85.84
Ethylene Oxide			EPA TO-15	0.1938	ug/m3	0.0418	KL 7/12/2022	

COMMENTS: \$ETO received in the lab at 5.6 psi.

ug/L: micrograms/liter
 mg/L: milligrams/liter
 mg/kg: milligrams/kilogram
 ug/kg: micrograms/kilogram
 ug/g: micrograms/gram
 ppm: parts per million
 ppb: parts per billion
 org/L: organisms/liter

<: less than
 MCL: Maximum Contaminant Level
 RL: Reporting Limit
 LSPC: result less than lower specification
 USPC: result greater than upper specification
 TIE: Tentatively Identified or Estimated
 VIOL: Violation (result exceeds MCL)

Laboratory Contacts:

Lab Director:	Mark Tolbert	470-524-0577
Inorganics:	Carmen Pyles	470-524-0629
Metals:	Shene Jones	470-524-0544
Organics:	Mary Bowman	470-524-0639
GC Mass Spec:	Ralph Schulz	470-524-0684
Microbiology:	Mary Bowman	470-524-0709

**GEORGIA DEPARTMENT OF NATURAL RESOURCES
ENVIRONMENTAL PROTECTION DIVISION**

5804 Peachtree Corners East, Norcross, GA 30092-3403
(678) 248-7384

LABORATORY REPORT

TO: Ga EPD Air Program EPD Air Prot Ambient Monitoring 4244 International Pkwy Ste 120 Atlanta, GA 30354	Date Collected: 7/4/2022 Time Collected: 0:00 Sample Collector: J. BRYANT Chlorination: Sample Type: Received By: HZ
Sample ID: AL03116 Facility Name: COVINGTON C2 Site ID: C2 Location ID: Location Descr:	Date Received: 7/12/2022 Time Received: 12:08 PM Project: DATA STUDY Reporting Date: 9/26/2022 Received Temperature: 24.0 °C

ANALYTE	PARAMETER CODE NOTE	EPA METHOD	RESULT	UNITS	QUALIFIER RL	ANALYSIS ANALYST DATE	MCL or QC Range
ETO by EPA Method TO-15 QC Batch 197573							
Bromofluorobenzene(Surrogate QC Std.)	EPA TO-15	9.5677	ppbV		KL	7/14/2022	8 to 12
Ethylene Oxide	EPA TO-15	0.1319	ppbV	0.0232	KL	7/14/2022	
ETO Results by EPA Method TO-15							
Bromofluorobenzene(Surrogate QC Std.)	EPA TO-15	68.4379	ug/m3		KL	7/14/2022	57.22 to 85.84
Ethylene Oxide	EPA TO-15	0.2378	ug/m3	0.0418	KL	7/14/2022	

COMMENTS: \$ETO received in the lab at 6 in Hg.

ug/L: micrograms/liter
 mg/L: milligrams/liter
 mg/kg: milligrams/kilogram
 ug/kg: micrograms/kilogram
 ug/g: micrograms/gram
 ppm: parts per million
 ppb: parts per billion
 org/L: organisms/liter

<: less than
 MCL: Maximum Contaminant Level
 RL: Reporting Limit
 LSPC: result less than lower specification
 USPC: result greater than upper specification
 TIE: Tentatively Identified or Estimated
 VIOL: Violation (result exceeds MCL)

Laboratory Contacts:

Lab Director:	Mark Tolbert	470-524-0577
Inorganics:	Carmen Pyles	470-524-0629
Metals:	Shene Jones	470-524-0544
Organics:	Mary Bowman	470-524-0639
GC Mass Spec:	Ralph Schulz	470-524-0684
Microbiology:	Mary Bowman	470-524-0709

**GEORGIA DEPARTMENT OF NATURAL RESOURCES
ENVIRONMENTAL PROTECTION DIVISION**

5804 Peachtree Corners East, Norcross, GA 30092-3403
(678) 248-7384

LABORATORY REPORT

TO: Ga EPD Air Program EPD Air Prot Ambient Monitoring 4244 International Pkwy Ste 120 Atlanta, GA 30354	Date Collected: 7/4/2022 Time Collected: 0:00 Sample Collector: J. BRYANT Chlorination: Sample Type: Received By: HZ
Sample ID: AL03117 Facility Name: FULTON F2-QA Site ID: F2-QA Location ID: Location Descr:	Date Received: 7/12/2022 Time Received: 12:08 PM Project: DATA STUDY Reporting Date: 9/26/2022 Received Temperature: 24.3 °C

ANALYTE	PARAMETER CODE	NOTE	EPA METHOD	RESULT	UNITS	QUALIFIER RL	ANALYSIS ANALYST DATE	MCL or QC Range
ETO by EPA Method TO-15 QC Batch 197573								
Bromofluorobenzene(Surrogate QC Std.)		EPA TO-15	9.6230	ppbV		KL	7/14/2022	8 to 12
Ethylene Oxide		EPA TO-15	0.1557	ppbV	0.0232	KL	7/14/2022	
ETO Results by EPA Method TO-15								
Bromofluorobenzene(Surrogate QC Std.)		EPA TO-15	68.8334	ug/m3		KL	7/14/2022	57.22 to 85.84
Ethylene Oxide		EPA TO-15	0.2807	ug/m3	0.0418	KL	7/14/2022	

COMMENTS: \$ETO received in the lab at 5 in Hg.

ug/L: micrograms/liter
 mg/L: milligrams/liter
 mg/kg: milligrams/kilogram
 ug/kg: micrograms/kilogram
 ug/g: micrograms/gram
 ppm: parts per million
 ppb: parts per billion
 org/L: organisms/liter

<: less than
 MCL: Maximum Contaminant Level
 RL: Reporting Limit
 LSPC: result less than lower specification
 USPC: result greater than upper specification
 TIE: Tentatively Identified or Estimated
 VIOL: Violation (result exceeds MCL)

Laboratory Contacts:

Lab Director:	Mark Tolbert	470-524-0577
Inorganics:	Carmen Pyles	470-524-0629
Metals:	Shene Jones	470-524-0544
Organics:	Mary Bowman	470-524-0639
GC Mass Spec:	Ralph Schulz	470-524-0684
Microbiology:	Mary Bowman	470-524-0709

**GEORGIA DEPARTMENT OF NATURAL RESOURCES
ENVIRONMENTAL PROTECTION DIVISION**

5804 Peachtree Corners East, Norcross, GA 30092-3403
(678) 248-7384

LABORATORY REPORT

TO: Ga EPD Air Program EPD Air Prot Ambient Monitoring 4244 International Pkwy Ste 120 Atlanta, GA 30354	Date Collected: 7/4/2022 Time Collected: 0:00 Sample Collector: J. BRYANT Chlorination: Sample Type: Received By: HZ
Sample ID: AL03118 Facility Name: COVINGTON C2-QA Site ID: C2-QA Location ID: Location Descr:	Date Received: 7/12/2022 Time Received: 12:07 PM Project: DATA STUDY Reporting Date: 9/26/2022 Received Temperature: 24.5 °C

ANALYTE	PARAMETER CODE NOTE	EPA METHOD	RESULT	UNITS	QUALIFIER RL	ANALYSIS ANALYST DATE	MCL or QC Range
ETO by EPA Method TO-15 QC Batch 197573							
Bromofluorobenzene(Surrogate QC Std.)	EPA TO-15	9.6156	ppbV		KL	7/14/2022	8 to 12
Ethylene Oxide	EPA TO-15	0.1153	ppbV	0.0232	KL	7/14/2022	
ETO Results by EPA Method TO-15							
Bromofluorobenzene(Surrogate QC Std.)	EPA TO-15	68.7805	ug/m3		KL	7/14/2022	57.22 to 85.84
Ethylene Oxide	EPA TO-15	0.2078	ug/m3	0.0418	KL	7/14/2022	

COMMENTS: \$ETO received in the lab at 5 in Hg.

ug/L: micrograms/liter
 mg/L: milligrams/liter
 mg/kg: milligrams/kilogram
 ug/kg: micrograms/kilogram
 ug/g: micrograms/gram
 ppm: parts per million
 ppb: parts per billion
 org/L: organisms/liter

<: less than
 MCL: Maximum Contaminant Level
 RL: Reporting Limit
 LSPC: result less than lower specification
 USPC: result greater than upper specification
 TIE: Tentatively Identified or Estimated
 VIOL: Violation (result exceeds MCL)

Laboratory Contacts:

Lab Director:	Mark Tolbert	470-524-0577
Inorganics:	Carmen Pyles	470-524-0629
Metals:	Shene Jones	470-524-0544
Organics:	Mary Bowman	470-524-0639
GC Mass Spec:	Ralph Schulz	470-524-0684
Microbiology:	Mary Bowman	470-524-0709

**GEORGIA DEPARTMENT OF NATURAL RESOURCES
ENVIRONMENTAL PROTECTION DIVISION**

5804 Peachtree Corners East, Norcross, GA 30092-3403
(678) 248-7384

LABORATORY REPORT

TO: Ga EPD Air Program EPD Air Prot Ambient Monitoring 4244 International Pkwy Ste 120 Atlanta, GA 30354	Date Collected: 7/10/2022
	Time Collected: 0:00
Sample ID: AL03119 Facility Name: SOUTH DEKALB QA Site ID: 013-089-0002 Location ID: Location Descr:	Sample Collector: J. BRYANT
	Canister Number: 110349
	Canister Cleaned: 6/13/2022
	Received By: HZ
	Date Received: 7/12/2022
	Time Received: 12:08 PM
	Project: AIR
	Reporting Date: 9/26/2022
	Received Temperature: 24.1 °C

ANALYTE	PARAMETER	EPA	RESULT	QUALIFIER	ANALYSIS	MCL or
	CODE	NOTE		METHOD	RL	
ETO by EPA Method TO-15 QC Batch 197573						
Bromofluorobenzene(Surrogate QC Std.)			EPA TO-15	9.4101	ppbV	KL 7/14/2022 8 to 12
Ethylene Oxide			EPA TO-15	0.1074	ppbV	0.0232 KL 7/14/2022
ETO Results by EPA Method TO-15						
Bromofluorobenzene(Surrogate QC Std.)			EPA TO-15	67.3106	ug/m3	KL 7/14/2022 57.22 to 85.84
Ethylene Oxide			EPA TO-15	0.1936	ug/m3	0.0418 KL 7/14/2022

COMMENTS: \$ETO received in the lab at 4.4 psi.

ug/L: micrograms/liter
mg/L: milligrams/liter
mg/kg: milligrams/kilogram
ug/kg: micrograms/kilogram
ug/g: micrograms/gram
ppm: parts per million
ppb: parts per billion
org/L: organisms/liter

<: less than
MCL: Maximum Contaminant Level
RL: Reporting Limit
LSPC: result less than lower specification
USPC: result greater than upper specification
TIE: Tentatively Identified or Estimated
VIOL: Violation (result exceeds MCL)

Laboratory Contacts:

Lab Director:	Mark Tolbert	470-524-0577
Inorganics:	Carmen Pyles	470-524-0629
Metals:	Shene Jones	470-524-0544
Organics:	Mary Bowman	470-524-0639
GC Mass Spec:	Ralph Schulz	470-524-0684
Microbiology:	Mary Bowman	470-524-0709

**GEORGIA DEPARTMENT OF NATURAL RESOURCES
ENVIRONMENTAL PROTECTION DIVISION**

5804 Peachtree Corners East, Norcross, GA 30092-3403
(678) 248-7384

LABORATORY REPORT

TO: Ga EPD Air Program EPD Air Prot Ambient Monitoring 4244 International Pkwy Ste 120 Atlanta, GA 30354	Date Collected: 7/4/2022 Time Collected: 0:00 Sample Collector: C. KNOX Chlorination: Sample Type: Received By: HZ
Sample ID: AL03120 Facility Name: General Coffee Site ID: 013-069-0002 Location ID: Location Descr:	Date Received: 7/8/2022 Time Received: 12:43 PM Project: DATA STUDY Reporting Date: 9/26/2022 Received Temperature: 21.6 °C

ANALYTE	PARAMETER CODE NOTE	EPA METHOD	RESULT	UNITS	QUALIFIER RL	ANALYSIS ANALYST DATE	MCL or QC Range
ETO by EPA Method TO-15 QC Batch 197505							
Bromofluorobenzene(Surrogate QC Std.)	EPA TO-15	10.3221	ppbV		KL	7/12/2022	8 to 12
Ethylene Oxide	EPA TO-15	0.0458	ppbV	SQ 2	0.0232	KL 7/12/2022	
ETO Results by EPA Method TO-15							
Bromofluorobenzene(Surrogate QC Std.)	EPA TO-15	73.8341	ug/m3		KL	7/12/2022	57.22 to 85.84
Ethylene Oxide	EPA TO-15	0.0826	ug/m3	SQ 2	0.0418	KL 7/12/2022	

COMMENTS: \$ETO received in the lab at 20 psi. Pressure difference of >0.5 psi between receipt from field and receipt in lab.

ug/L: micrograms/liter mg/L: milligrams/liter mg/kg: milligrams/kilogram ug/kg: micrograms/kilogram ug/g: micrograms/gram ppm: parts per million ppb: parts per billion org/L: organisms/liter	<: less than MCL: Maximum Contaminant Level RL: Reporting Limit LSPC: result less than lower specification USPC: result greater than upper specification TIE: Tentatively Identified or Estimated VIOL: Violation (result exceeds MCL)	Laboratory Contacts: Lab Director: Mark Tolbert 470-524-0577 Inorganics: Carmen Pyles 470-524-0629 Metals: Shene Jones 470-524-0544 Organics: Mary Bowman 470-524-0639 GC Mass Spec: Ralph Schulz 470-524-0684 Microbiology: Mary Bowman 470-524-0709
---	--	--

GEORGIA DEPARTMENT OF NATURAL RESOURCES
ENVIRONMENTAL PROTECTION DIVISION

5804 Peachtree Corners East, Norcross, GA 30092-3403
(678) 248-7384

LABORATORY REPORT

TO: Ga EPD Air Program EPD Air Prot Ambient Monitoring 4244 International Pkwy Ste 120 Atlanta, GA 30354	Date Collected: 7/16/2022 Time Collected: 0:00 Sample Collector: C. KNOX Chlorination: Sample Type: Received By: HZ
Sample ID: AL04051 Facility Name: GENERAL COFFEE Site ID: 013-069-0002 Location ID: Location Descr:	Date Received: 7/25/2022 Time Received: 10:28 AM Project: DATA STUDY Reporting Date: 9/26/2022 Received Temperature: 21.6 °C

ANALYTE	PARAMETER CODE	NOTE	EPA METHOD	RESULT	UNITS	QUALIFIER RL	ANALYSIS ANALYST	DATE	MCL or QC Range
ETO by EPA Method TO-15 QC Batch 197793									
Bromofluorobenzene(Surrogate QC Std.)			EPA TO-15	9.0574	ppbV		KL	7/26/2022	8 to 12
Ethylene Oxide			EPA TO-15	0.0463	ppbV	SQ 2	0.0232	KL	7/26/2022
ETO Results by EPA Method TO-15									
Bromofluorobenzene(Surrogate QC Std.)			EPA TO-15	64.7877	ug/m3		KL	7/26/2022	57.22 to 85.84
Ethylene Oxide			EPA TO-15	0.0835	ug/m3	SQ 2	0.0418	KL	7/26/2022

COMMENTS: \$ETO received in the lab at 20 psi. Pressure difference of >0.5 psi between receipt from field and receipt in lab.

ug/L: micrograms/liter
mg/L: milligrams/liter
mg/kg: milligrams/kilogram
ug/kg: micrograms/kilogram
ug/g: micrograms/gram
ppm: parts per million
ppb: parts per billion
org/L: organisms/liter

<: less than
MCL: Maximum Contaminant Level
RL: Reporting Limit
LSPC: result less than lower specification
USPC: result greater than upper specification
TIE: Tentatively Identified or Estimated
VIOL: Violation (result exceeds MCL)

Laboratory Contacts:

Lab Director: Mark Tolbert 470-524-0577
Inorganics: Carmen Pyles 470-524-0629
Metals: Shene Jones 470-524-0544
Organics: Mary Bowman 470-524-0639
GC Mass Spec: Ralph Schulz 470-524-0684
Microbiology: Mary Bowman 470-524-0709

**GEORGIA DEPARTMENT OF NATURAL RESOURCES
ENVIRONMENTAL PROTECTION DIVISION**

5804 Peachtree Corners East, Norcross, GA 30092-3403
(678) 248-7384

LABORATORY REPORT

TO: Ga EPD Air Program EPD Air Prot Ambient Monitoring 4244 International Pkwy Ste 120 Atlanta, GA 30354	Date Collected: 7/16/2022 Time Collected: 0:00 Sample Collector: J. BRYANT Chlorination: Sample Type: Received By: HZ
Sample ID: AL04052 Facility Name: COBB S2 Site ID: S2 Location ID: Location Descr:	Date Received: 8/1/2022 Time Received: 11:12 AM Project: DATA STUDY Reporting Date: 9/26/2022 Received Temperature: 19.8 °C

ANALYTE	PARAMETER CODE	NOTE	EPA METHOD	RESULT	QUALIFIER UNITS	RL	ANALYSIS ANALYST DATE	MCL or QC Range
ETO by EPA Method TO-15 QC Batch 197922								
Bromofluorobenzene(Surrogate QC Std.)			EPA TO-15	9.2424	ppbV		KL 8/2/2022	8 to 12
Ethylene Oxide			EPA TO-15	0.0447	ppbV	SQ 0.0232	KL 8/2/2022	
ETO Results by EPA Method TO-15								
Bromofluorobenzene(Surrogate QC Std.)			EPA TO-15	66.111	ug/m3		KL 8/2/2022	57.22 to 85.84
Ethylene Oxide			EPA TO-15	0.0806	ug/m3	SQ 0.0418	KL 8/2/2022	

COMMENTS: \$ETO received in the lab at 7 in Hg.

ug/L: micrograms/liter
 mg/L: milligrams/liter
 mg/kg: milligrams/kilogram
 ug/kg: micrograms/kilogram
 ug/g: micrograms/gram
 ppm: parts per million
 ppb: parts per billion
 org/L: organisms/liter

<: less than
 MCL: Maximum Contaminant Level
 RL: Reporting Limit
 LSPC: result less than lower specification
 USPC: result greater than upper specification
 TIE: Tentatively Identified or Estimated
 VIOL: Violation (result exceeds MCL)

Laboratory Contacts:

Lab Director:	Mark Tolbert	470-524-0577
Inorganics:	Carmen Pyles	470-524-0629
Metals:	Shene Jones	470-524-0544
Organics:	Mary Bowman	470-524-0639
GC Mass Spec:	Ralph Schulz	470-524-0684
Microbiology:	Mary Bowman	470-524-0709

**GEORGIA DEPARTMENT OF NATURAL RESOURCES
ENVIRONMENTAL PROTECTION DIVISION**

5804 Peachtree Corners East, Norcross, GA 30092-3403
(678) 248-7384

LABORATORY REPORT

TO: Ga EPD Air Program EPD Air Prot Ambient Monitoring 4244 International Pkwy Ste 120 Atlanta, GA 30354	Date Collected: 7/16/2022
	Time Collected: 0:00
Sample ID: AL04053 Facility Name: COBB S6-SA Site ID: S6-SA Location ID: Location Descr:	Sample Collector: J. BRYANT
	Chlorination:
	Sample Type:
	Received By: HZ
	Date Received: 8/1/2022
	Time Received: 11:12 AM
	Project: DATA STUDY
	Reporting Date: 9/26/2022
	Received Temperature: 25.1 °C

ANALYTE	PARAMETER	EPA			QUALIFIER	ANALYSIS		MCL or	
	CODE	NOTE	METHOD	RESULT	UNITS	RL	ANALYST	DATE	QC Range
ETO by EPA Method TO-15 QC Batch 197922									
Bromofluorobenzene(Surrogate QC Std.)			EPA TO-15	9.1904	ppbV		KL	8/2/2022	8 to 12
Ethylene Oxide			EPA TO-15	0.0762	ppbV	0.0232	KL	8/2/2022	
ETO Results by EPA Method TO-15									
Bromofluorobenzene(Surrogate QC Std.)			EPA TO-15	65.739	ug/m3		KL	8/2/2022	57.22 to 85.84
Ethylene Oxide			EPA TO-15	0.1374	ug/m3	0.0418	KL	8/2/2022	

COMMENTS: \$ETO received in the lab at 6.5 in Hg.

ug/L: micrograms/liter
mg/L: milligrams/liter
mg/kg: milligrams/kilogram
ug/kg: micrograms/kilogram
ug/g: micrograms/gram
ppm: parts per million
ppb: parts per billion
org/L: organisms/liter

<: less than
MCL: Maximum Contaminant Level
RL: Reporting Limit
LSPC: result less than lower specification
USPC: result greater than upper specification
TIE: Tentatively Identified or Estimated
VIOL: Violation (result exceeds MCL)

Laboratory Contacts:

Lab Director:	Mark Tolbert	470-524-0577
Inorganics:	Carmen Pyles	470-524-0629
Metals:	Shene Jones	470-524-0544
Organics:	Mary Bowman	470-524-0639
GC Mass Spec:	Ralph Schulz	470-524-0684
Microbiology:	Mary Bowman	470-524-0709

**GEORGIA DEPARTMENT OF NATURAL RESOURCES
ENVIRONMENTAL PROTECTION DIVISION**

5804 Peachtree Corners East, Norcross, GA 30092-3403
(678) 248-7384

LABORATORY REPORT

TO: Ga EPD Air Program EPD Air Prot Ambient Monitoring 4244 International Pkwy Ste 120 Atlanta, GA 30354	Date Collected: 7/16/2022
	Time Collected: 0:00
Sample ID: AL04054 Facility Name: FULTON F2 Site ID: F2 Location ID: Location Descr:	Sample Collector: J. BRYANT
	Chlorination:
	Sample Type:
	Received By: HZ
	Date Received: 8/1/2022
	Time Received: 11:12 AM
	Project: DATA STUDY
	Reporting Date: 9/26/2022
	Received Temperature: 20.5 °C

ANALYTE	PARAMETER	EPA			QUALIFIER	ANALYSIS		MCL or	
	CODE	NOTE	METHOD	RESULT	UNITS	RL	ANALYST	DATE	QC Range
ETO by EPA Method TO-15 QC Batch 197922									
Bromofluorobenzene(Surrogate QC Std.)			EPA TO-15	9.4189	ppbV		KL	8/2/2022	8 to 12
Ethylene Oxide			EPA TO-15	0.1440	ppbV	0.0232	KL	8/2/2022	
ETO Results by EPA Method TO-15									
Bromofluorobenzene(Surrogate QC Std.)			EPA TO-15	67.3735	ug/m3		KL	8/2/2022	57.22 to 85.84
Ethylene Oxide			EPA TO-15	0.2596	ug/m3	0.0418	KL	8/2/2022	

COMMENTS: \$ETO received in the lab at 7 in Hg.

ug/L: micrograms/liter
mg/L: milligrams/liter
mg/kg: milligrams/kilogram
ug/kg: micrograms/kilogram
ug/g: micrograms/gram
ppm: parts per million
ppb: parts per billion
org/L: organisms/liter

<: less than
MCL: Maximum Contaminant Level
RL: Reporting Limit
LSPC: result less than lower specification
USPC: result greater than upper specification
TIE: Tentatively Identified or Estimated
VIOL: Violation (result exceeds MCL)

Laboratory Contacts:

Lab Director:	Mark Tolbert	470-524-0577
Inorganics:	Carmen Pyles	470-524-0629
Metals:	Shene Jones	470-524-0544
Organics:	Mary Bowman	470-524-0639
GC Mass Spec:	Ralph Schulz	470-524-0684
Microbiology:	Mary Bowman	470-524-0709

**GEORGIA DEPARTMENT OF NATURAL RESOURCES
ENVIRONMENTAL PROTECTION DIVISION**

5804 Peachtree Corners East, Norcross, GA 30092-3403
(678) 248-7384

LABORATORY REPORT

TO: Ga EPD Air Program EPD Air Prot Ambient Monitoring 4244 International Pkwy Ste 120 Atlanta, GA 30354	Date Collected: 7/16/2022
	Time Collected: 0:00
Sample ID: AL04055 Facility Name: COVINGTON C2 Site ID: C2 Location ID: Location Descr:	Sample Collector: J. BRYANT
	Chlorination:
	Sample Type:
	Received By: HZ
	Date Received: 8/1/2022
	Time Received: 11:12 AM
	Project: DATA STUDY
	Reporting Date: 9/26/2022
	Received Temperature: 23.4 °C

ANALYTE	PARAMETER		EPA	RESULT	UNITS	QUALIFIER	ANALYSIS		MCL or	
	CODE	NOTE	METHOD			RL	ANALYST	DATE	QC	Range
ETO by EPA Method TO-15 QC Batch 197922										
Bromofluorobenzene(Surrogate QC Std.)			EPA TO-15	9.3091	ppbV		KL	8/2/2022	8 to	12
Ethylene Oxide			EPA TO-15	0.0950	ppbV	0.0232	KL	8/2/2022		
ETO Results by EPA Method TO-15										
Bromofluorobenzene(Surrogate QC Std.)			EPA TO-15	66.5881	ug/m3		KL	8/2/2022	57.22 to	85.84
Ethylene Oxide			EPA TO-15	0.1712	ug/m3	0.0418	KL	8/2/2022		

COMMENTS: \$ETO received in the lab at 4.5 in Hg.

ug/L: micrograms/liter
mg/L: milligrams/liter
mg/kg: milligrams/kilogram
ug/kg: micrograms/kilogram
ug/g: micrograms/gram
ppm: parts per million
ppb: parts per billion
org/L: organisms/liter

<: less than
MCL: Maximum Contaminant Level
RL: Reporting Limit
LSPC: result less than lower specification
USPC: result greater than upper specification
TIE: Tentatively Identified or Estimated
VIOL: Violation (result exceeds MCL)

Laboratory Contacts:

Lab Director:	Mark Tolbert	470-524-0577
Inorganics:	Carmen Pyles	470-524-0629
Metals:	Shene Jones	470-524-0544
Organics:	Mary Bowman	470-524-0639
GC Mass Spec:	Ralph Schulz	470-524-0684
Microbiology:	Mary Bowman	470-524-0709

**GEORGIA DEPARTMENT OF NATURAL RESOURCES
ENVIRONMENTAL PROTECTION DIVISION**

5804 Peachtree Corners East, Norcross, GA 30092-3403
(678) 248-7384

LABORATORY REPORT

TO: Ga EPD Air Program EPD Air Prot Ambient Monitoring 4244 International Pkwy Ste 120 Atlanta, GA 30354	Date Collected: 7/16/2022
	Time Collected: 0:00
Sample ID: AL04056 Facility Name: COBB S7-SA Site ID: S7-SA Location ID: Location Descr:	Sample Collector: J. BRYANT
	Chlorination:
	Sample Type:
	Received By: HZ
	Date Received: 8/1/2022
	Time Received: 11:13 AM
	Project: DATA STUDY
	Reporting Date: 9/26/2022
	Received Temperature: 21.5 °C

ANALYTE	PARAMETER		EPA	RESULT	UNITS	QUALIFIER	ANALYSIS		MCL or	
	CODE	NOTE	METHOD			RL	ANALYST	DATE	QC Range	
ETO by EPA Method TO-15 QC Batch 197922										
Bromofluorobenzene(Surrogate QC Std.)			EPA TO-15	9.2823	ppbV		KL	8/2/2022	8 to	12
Ethylene Oxide			EPA TO-15	0.1181	ppbV	0.0232	KL	8/2/2022		
ETO Results by EPA Method TO-15										
Bromofluorobenzene(Surrogate QC Std.)			EPA TO-15	66.3964	ug/m3		KL	8/2/2022	57.22 to	85.84
Ethylene Oxide			EPA TO-15	0.2129	ug/m3	0.0418	KL	8/2/2022		

COMMENTS: \$ETO received in the lab at 6.5 in Hg.

ug/L: micrograms/liter
mg/L: milligrams/liter
mg/kg: milligrams/kilogram
ug/kg: micrograms/kilogram
ug/g: micrograms/gram
ppm: parts per million
ppb: parts per billion
org/L: organisms/liter

<: less than
MCL: Maximum Contaminant Level
RL: Reporting Limit
LSPC: result less than lower specification
USPC: result greater than upper specification
TIE: Tentatively Identified or Estimated
VIOL: Violation (result exceeds MCL)

Laboratory Contacts:

Lab Director:	Mark Tolbert	470-524-0577
Inorganics:	Carmen Pyles	470-524-0629
Metals:	Shene Jones	470-524-0544
Organics:	Mary Bowman	470-524-0639
GC Mass Spec:	Ralph Schulz	470-524-0684
Microbiology:	Mary Bowman	470-524-0709

**GEORGIA DEPARTMENT OF NATURAL RESOURCES
ENVIRONMENTAL PROTECTION DIVISION**

5804 Peachtree Corners East, Norcross, GA 30092-3403
(678) 248-7384

LABORATORY REPORT

TO: Ga EPD Air Program EPD Air Prot Ambient Monitoring 4244 International Pkwy Ste 120 Atlanta, GA 30354	Date Collected: 7/16/2022
	Time Collected: 0:00
Sample ID: AL04057 Facility Name: FULTON F1-SA Site ID: F1-SA Location ID: Location Descr:	Sample Collector: J. BRYANT
	Chlorination:
	Sample Type:
	Received By: HZ
	Date Received: 8/1/2022
	Time Received: 11:13 AM
	Project: DATA STUDY
	Reporting Date: 9/26/2022
	Received Temperature: 26.1 °C

ANALYTE	PARAMETER	EPA			QUALIFIER	ANALYSIS		MCL or	
	CODE	NOTE	METHOD	RESULT	UNITS	RL	ANALYST	DATE	QC Range
ETO by EPA Method TO-15 QC Batch 197922									
Bromofluorobenzene(Surrogate QC Std.)			EPA TO-15	9.4308	ppbV		KL	8/2/2022	8 to 12
Ethylene Oxide			EPA TO-15	0.1632	ppbV	0.0232	KL	8/2/2022	
ETO Results by EPA Method TO-15									
Bromofluorobenzene(Surrogate QC Std.)			EPA TO-15	67.4586	ug/m3		KL	8/2/2022	57.22 to 85.84
Ethylene Oxide			EPA TO-15	0.2942	ug/m3	0.0418	KL	8/2/2022	

COMMENTS: \$ETO received in the lab at 8 in Hg.

ug/L: micrograms/liter
mg/L: milligrams/liter
mg/kg: milligrams/kilogram
ug/kg: micrograms/kilogram
ug/g: micrograms/gram
ppm: parts per million
ppb: parts per billion
org/L: organisms/liter

<: less than
MCL: Maximum Contaminant Level
RL: Reporting Limit
LSPC: result less than lower specification
USPC: result greater than upper specification
TIE: Tentatively Identified or Estimated
VIOL: Violation (result exceeds MCL)

Laboratory Contacts:

Lab Director:	Mark Tolbert	470-524-0577
Inorganics:	Carmen Pyles	470-524-0629
Metals:	Shene Jones	470-524-0544
Organics:	Mary Bowman	470-524-0639
GC Mass Spec:	Ralph Schulz	470-524-0684
Microbiology:	Mary Bowman	470-524-0709

**GEORGIA DEPARTMENT OF NATURAL RESOURCES
ENVIRONMENTAL PROTECTION DIVISION**

5804 Peachtree Corners East, Norcross, GA 30092-3403
(678) 248-7384

LABORATORY REPORT

TO: Ga EPD Air Program EPD Air Prot Ambient Monitoring 4244 International Pkwy Ste 120 Atlanta, GA 30354	Date Collected: 7/16/2022
	Time Collected: 0:00
Sample ID: AL04058 Facility Name: COVINGTON C3-SA Site ID: C3-SA Location ID: Location Descr:	Sample Collector: J. BRYANT
	Chlorination:
	Sample Type:
	Received By: HZ
	Date Received: 8/1/2022
	Time Received: 11:12 AM
	Project: DATA STUDY
	Reporting Date: 9/26/2022
	Received Temperature: 21.4 °C

ANALYTE	PARAMETER		EPA	RESULT	QUALIFIER			ANALYSIS		MCL or	
	CODE	NOTE	METHOD		UNITS	RL	ANALYST	DATE	QC Range		
ETO by EPA Method TO-15 QC Batch 197922											
Bromofluorobenzene(Surrogate QC Std.)			EPA TO-15	9.2160	ppbV			KL	8/2/2022	8 to	12
Ethylene Oxide			EPA TO-15	0.0702	ppbV	SQ	0.0232	KL	8/2/2022		
ETO Results by EPA Method TO-15											
Bromofluorobenzene(Surrogate QC Std.)			EPA TO-15	65.9222	ug/m3			KL	8/2/2022	57.22 to	85.84
Ethylene Oxide			EPA TO-15	0.1265	ug/m3	SQ	0.0418	KL	8/2/2022		

COMMENTS: \$ETO received in the lab at 5.5 in Hg.

ug/L: micrograms/liter
mg/L: milligrams/liter
mg/kg: milligrams/kilogram
ug/kg: micrograms/kilogram
ug/g: micrograms/gram
ppm: parts per million
ppb: parts per billion
org/L: organisms/liter

<: less than
MCL: Maximum Contaminant Level
RL: Reporting Limit
LSPC: result less than lower specification
USPC: result greater than upper specification
TIE: Tentatively Identified or Estimated
VIOL: Violation (result exceeds MCL)

Laboratory Contacts:

Lab Director:	Mark Tolbert	470-524-0577
Inorganics:	Carmen Pyles	470-524-0629
Metals:	Shene Jones	470-524-0544
Organics:	Mary Bowman	470-524-0639
GC Mass Spec:	Ralph Schulz	470-524-0684
Microbiology:	Mary Bowman	470-524-0709

**GEORGIA DEPARTMENT OF NATURAL RESOURCES
ENVIRONMENTAL PROTECTION DIVISION**

5804 Peachtree Corners East, Norcross, GA 30092-3403
(678) 248-7384

LABORATORY REPORT

TO: Ga EPD Air Program EPD Air Prot Ambient Monitoring 4244 International Pkwy Ste 120 Atlanta, GA 30354	Date Collected: 7/16/2022 Time Collected: 0:00 Sample Collector: H. STREET Canister Number: 114350 Canister Cleaned: 6/27/2022 Received By: HZ
	Date Received: 7/19/2022 Time Received: 12:16 PM Project: AIR Reporting Date: 9/26/2022 Received Temperature: 23.4 °C
Sample ID: AL04060 Facility Name: SOUTH DEKALB QA Site ID: 013-089-0002 Location ID: Location Descr:	

ANALYTE	PARAMETER CODE	NOTE	EPA METHOD	RESULT	UNITS	QUALIFIER RL	ANALYSIS ANALYST DATE	MCL or QC Range
ETO by EPA Method TO-15 QC Batch 197717								
Bromofluorobenzene(Surrogate QC Std.)			EPA TO-15	9.5733	ppbV		KL 7/21/2022	8 to 12
Ethylene Oxide			EPA TO-15	0.0923	ppbV	0.0232	KL 7/21/2022	
ETO Results by EPA Method TO-15								
Bromofluorobenzene(Surrogate QC Std.)			EPA TO-15	68.4779	ug/m3		KL 7/21/2022	57.22 to 85.84
Ethylene Oxide			EPA TO-15	0.1664	ug/m3	0.0418	KL 7/21/2022	
ETO NATTS QA Replicate Precision								
Ethylene Oxide			EPA TO-15	8.00	%RPD		KL 7/21/2022	25
ETO QA Replicate Result								
Bromofluorobenzene(Surrogate QC Std.)			EPA TO-15	9.7068	ppbV		KL 7/21/2022	8 to 12
Ethylene Oxide			EPA TO-15	0.0852	ppbV	0.0232	KL 7/21/2022	

COMMENTS: \$ETO received in the lab at 0.5 in Hg.

ug/L: micrograms/liter
 mg/L: milligrams/liter
 mg/kg: milligrams/kilogram
 ug/kg: micrograms/kilogram
 ug/g: micrograms/gram
 ppm: parts per million
 ppb: parts per billion
 org/L: organisms/liter

<: less than
 MCL: Maximum Contaminant Level
 RL: Reporting Limit
 LSPC: result less than lower specification
 USPC: result greater than upper specification
 TIE: Tentatively Identified or Estimated
 VIOL: Violation (result exceeds MCL)

Laboratory Contacts:

Lab Director:	Mark Tolbert	470-524-0577
Inorganics:	Carmen Pyles	470-524-0629
Metals:	Shene Jones	470-524-0544
Organics:	Mary Bowman	470-524-0639
GC Mass Spec:	Ralph Schulz	470-524-0684
Microbiology:	Mary Bowman	470-524-0709

**GEORGIA DEPARTMENT OF NATURAL RESOURCES
ENVIRONMENTAL PROTECTION DIVISION**

5804 Peachtree Corners East, Norcross, GA 30092-3403
(678) 248-7384

LABORATORY REPORT

TO: Ga EPD Air Program EPD Air Prot Ambient Monitoring 4244 International Pkwy Ste 120 Atlanta, GA 30354	Date Collected: 7/22/2022 Time Collected: 0:00 Sample Collector: H. STREET Canister Number: 111215 Canister Cleaned: 6/27/2022 Received By: HZ
Sample ID: AL04061 Facility Name: SOUTH DEKALB Site ID: 013-089-0002 Location ID: Location Descr:	Date Received: 7/26/2022 Time Received: 1:26 PM Project: AIR Reporting Date: 9/26/2022 Received Temperature: 23.5 °C

ANALYTE	PARAMETER CODE NOTE	EPA METHOD	RESULT	UNITS	QUALIFIER RL	ANALYSIS ANALYST DATE	MCL or QC Range
ETO by EPA Method TO-15 QC Batch 197846							
Bromofluorobenzene(Surrogate QC Std.)	EPA TO-15	9.3684	ppbV		KL	7/28/2022	8 to 12
Ethylene Oxide	EPA TO-15	0.0841	ppbV	0.0232	KL	7/28/2022	
ETO Results by EPA Method TO-15							
Bromofluorobenzene(Surrogate QC Std.)	EPA TO-15	67.0123	ug/m3		KL	7/28/2022	57.22 to 85.84
Ethylene Oxide	EPA TO-15	0.1516	ug/m3	0.0418	KL	7/28/2022	

COMMENTS: \$ETO received in the lab at 0 psi.

ug/L: micrograms/liter
 mg/L: milligrams/liter
 mg/kg: milligrams/kilogram
 ug/kg: micrograms/kilogram
 ug/g: micrograms/gram
 ppm: parts per million
 ppb: parts per billion
 org/L: organisms/liter

<: less than
 MCL: Maximum Contaminant Level
 RL: Reporting Limit
 LSPC: result less than lower specification
 USPC: result greater than upper specification
 TIE: Tentatively Identified or Estimated
 VIOL: Violation (result exceeds MCL)

Laboratory Contacts:

Lab Director:	Mark Tolbert	470-524-0577
Inorganics:	Carmen Pyles	470-524-0629
Metals:	Shene Jones	470-524-0544
Organics:	Mary Bowman	470-524-0639
GC Mass Spec:	Ralph Schulz	470-524-0684
Microbiology:	Mary Bowman	470-524-0709

**GEORGIA DEPARTMENT OF NATURAL RESOURCES
ENVIRONMENTAL PROTECTION DIVISION**

5804 Peachtree Corners East, Norcross, GA 30092-3403
(678) 248-7384

LABORATORY REPORT

TO: Ga EPD Air Program EPD Air Prot Ambient Monitoring 4244 International Pkwy Ste 120 Atlanta, GA 30354	Date Collected: 7/22/2022 Time Collected: 0:00 Sample Collector: H. STREET Canister Number: 110336 Canister Cleaned: 6/27/2022 Received By: HZ
Sample ID: AL04062 Facility Name: SOUTH DEKALB QA Site ID: 013-089-0002 Location ID: Location Descr:	Date Received: 7/26/2022 Time Received: 1:26 PM Project: AIR Reporting Date: 9/26/2022 Received Temperature: 26.5 °C

ANALYTE	PARAMETER CODE	NOTE	EPA METHOD	RESULT	UNITS	QUALIFIER RL	ANALYSIS ANALYST DATE	MCL or QC Range
ETO by EPA Method TO-15 QC Batch 197846								
Bromofluorobenzene(Surrogate QC Std.)			EPA TO-15	9.1838	ppbV		KL 7/28/2022	8 to 12
Ethylene Oxide			EPA TO-15	0.0923	ppbV	0.0232	KL 7/28/2022	
ETO Results by EPA Method TO-15								
Bromofluorobenzene(Surrogate QC Std.)			EPA TO-15	65.6918	ug/m3		KL 7/28/2022	57.22 to 85.84
Ethylene Oxide			EPA TO-15	0.1664	ug/m3	0.0418	KL 7/28/2022	
ETO NATTS QA Replicate Precision								
Ethylene Oxide			EPA TO-15	9.49	%RPD		KL 7/28/2022	25
ETO QA Replicate Result								
Bromofluorobenzene(Surrogate QC Std.)			EPA TO-15	9.1243	ppbV		KL 7/28/2022	8 to 12
Ethylene Oxide			EPA TO-15	0.1015	ppbV	0.0232	KL 7/28/2022	

COMMENTS: \$ETO received in the lab at 0 psi.

ug/L: micrograms/liter
mg/L: milligrams/liter
mg/kg: milligrams/kilogram
ug/kg: micrograms/kilogram
ug/g: micrograms/gram
ppm: parts per million
ppb: parts per billion
org/L: organisms/liter

<: less than
MCL: Maximum Contaminant Level
RL: Reporting Limit
LSPC: result less than lower specification
USPC: result greater than upper specification
TIE: Tentatively Identified or Estimated
VIOL: Violation (result exceeds MCL)

Laboratory Contacts:

Lab Director:	Mark Tolbert	470-524-0577
Inorganics:	Carmen Pyles	470-524-0629
Metals:	Shene Jones	470-524-0544
Organics:	Mary Bowman	470-524-0639
GC Mass Spec:	Ralph Schulz	470-524-0684
Microbiology:	Mary Bowman	470-524-0709

**GEORGIA DEPARTMENT OF NATURAL RESOURCES
ENVIRONMENTAL PROTECTION DIVISION**

5804 Peachtree Corners East, Norcross, GA 30092-3403
(678) 248-7384

LABORATORY REPORT

TO: Ga EPD Air Program EPD Air Prot Ambient Monitoring 4244 International Pkwy Ste 120 Atlanta, GA 30354	Date Collected: 7/16/2022
	Time Collected: 0:00
Sample ID: AL04063 Facility Name: SOUTH DEKALB Site ID: 013-089-0002 Location ID: Location Descr:	Sample Collector: H. STREET
	Canister Number: 114321
	Canister Cleaned: 6/27/2022
	Received By: HZ
	Date Received: 7/19/2022
	Time Received: 12:16 PM
	Project: AIR
	Reporting Date: 9/26/2022
	Received Temperature: 23.1 °C

ANALYTE	PARAMETER	EPA			QUALIFIER	ANALYSIS		MCL or	
	CODE	NOTE	METHOD	RESULT	UNITS	RL	ANALYST	DATE	QC Range
ETO by EPA Method TO-15 QC Batch 197717									
Bromofluorobenzene(Surrogate QC Std.)			EPA TO-15	9.3725	ppbV		KL	7/21/2022	8 to 12
Ethylene Oxide			EPA TO-15	0.0853	ppbV	0.0232	KL	7/21/2022	
ETO Results by EPA Method TO-15									
Bromofluorobenzene(Surrogate QC Std.)			EPA TO-15	67.0416	ug/m3		KL	7/21/2022	57.22 to 85.84
Ethylene Oxide			EPA TO-15	0.1538	ug/m3	0.0418	KL	7/21/2022	

COMMENTS: \$ETO received in the lab at 4.8 psi.

ug/L: micrograms/liter
mg/L: milligrams/liter
mg/kg: milligrams/kilogram
ug/kg: micrograms/kilogram
ug/g: micrograms/gram
ppm: parts per million
ppb: parts per billion
org/L: organisms/liter

<: less than
MCL: Maximum Contaminant Level
RL: Reporting Limit
LSPC: result less than lower specification
USPC: result greater than upper specification
TIE: Tentatively Identified or Estimated
VIOL: Violation (result exceeds MCL)

Laboratory Contacts:

Lab Director:	Mark Tolbert	470-524-0577
Inorganics:	Carmen Pyles	470-524-0629
Metals:	Shene Jones	470-524-0544
Organics:	Mary Bowman	470-524-0639
GC Mass Spec:	Ralph Schulz	470-524-0684
Microbiology:	Mary Bowman	470-524-0709

**GEORGIA DEPARTMENT OF NATURAL RESOURCES
ENVIRONMENTAL PROTECTION DIVISION**

5804 Peachtree Corners East, Norcross, GA 30092-3403
(678) 248-7384

LABORATORY REPORT

TO: Ga EPD Air Program EPD Air Prot Ambient Monitoring 4244 International Pkwy Ste 120 Atlanta, GA 30354	Date Collected: 7/22/2022
	Time Collected: 0:00
Sample ID: AL04064 Facility Name: SOUTH DEKALB Site ID: 013-089-0002 Location ID: Location Descr:	Sample Collector: H. STREET
	Canister Number: 117224
	Canister Cleaned: 6/27/2022
	Received By: HZ
	Date Received: 7/26/2022
	Time Received: 1:25 PM
	Project: AIR
	Reporting Date: 9/26/2022
	Received Temperature: 21.9 °C

ANALYTE	PARAMETER		EPA	RESULT	UNITS	QUALIFIER	ANALYSIS		MCL or	
	CODE	NOTE	METHOD			RL	ANALYST	DATE	QC Range	
ETO by EPA Method TO-15 QC Batch 197846										
Bromofluorobenzene(Surrogate QC Std.)			EPA TO-15	9.5010	ppbV		KL	7/28/2022	8 to	12
Ethylene Oxide			EPA TO-15	0.0862	ppbV	0.0232	KL	7/28/2022		
ETO Results by EPA Method TO-15										
Bromofluorobenzene(Surrogate QC Std.)			EPA TO-15	67.9608	ug/m3		KL	7/28/2022	57.22 to	85.84
Ethylene Oxide			EPA TO-15	0.1554	ug/m3	0.0418	KL	7/28/2022		

COMMENTS: \$ETO received in the lab at 4.4 psi.

ug/L: micrograms/liter
mg/L: milligrams/liter
mg/kg: milligrams/kilogram
ug/kg: micrograms/kilogram
ug/g: micrograms/gram
ppm: parts per million
ppb: parts per billion
org/L: organisms/liter

<: less than
MCL: Maximum Contaminant Level
RL: Reporting Limit
LSPC: result less than lower specification
USPC: result greater than upper specification
TIE: Tentatively Identified or Estimated
VIOL: Violation (result exceeds MCL)

Laboratory Contacts:

Lab Director:	Mark Tolbert	470-524-0577
Inorganics:	Carmen Pyles	470-524-0629
Metals:	Shene Jones	470-524-0544
Organics:	Mary Bowman	470-524-0639
GC Mass Spec:	Ralph Schulz	470-524-0684
Microbiology:	Mary Bowman	470-524-0709

**GEORGIA DEPARTMENT OF NATURAL RESOURCES
ENVIRONMENTAL PROTECTION DIVISION**

5804 Peachtree Corners East, Norcross, GA 30092-3403
(678) 248-7384

LABORATORY REPORT

TO: Ga EPD Air Program EPD Air Prot Ambient Monitoring 4244 International Pkwy Ste 120 Atlanta, GA 30354	Date Collected: 7/16/2022
	Time Collected: 0:00
Sample ID: AL04065 Facility Name: SOUTH DEKALB Site ID: 013-089-0002 Location ID: Location Descr:	Sample Collector: H. STREET
	Canister Number: 114309
	Canister Cleaned: 6/27/2022
	Received By: HZ
	Date Received: 7/19/2022
	Time Received: 12:16 PM
	Project: AIR
	Reporting Date: 9/26/2022
	Received Temperature: 25.6 °C

ANALYTE	PARAMETER	EPA				QUALIFIER	ANALYSIS		MCL or	
	CODE	NOTE	METHOD	RESULT	UNITS	RL	ANALYST	DATE	QC Range	
ETO by EPA Method TO-15 QC Batch 197717										
Bromofluorobenzene(Surrogate QC Std.)			EPA TO-15	9.5131	ppbV			KL	7/21/2022	8 to 12
Ethylene Oxide			EPA TO-15	0.0704	ppbV	SQ	0.0232	KL	7/21/2022	
ETO Results by EPA Method TO-15										
Bromofluorobenzene(Surrogate QC Std.)			EPA TO-15	68.0473	ug/m3			KL	7/21/2022	57.22 to 85.84
Ethylene Oxide			EPA TO-15	0.1269	ug/m3	SQ	0.0418	KL	7/21/2022	

COMMENTS: \$ETO received in the lab at 5.8 psi.

ug/L: micrograms/liter
mg/L: milligrams/liter
mg/kg: milligrams/kilogram
ug/kg: micrograms/kilogram
ug/g: micrograms/gram
ppm: parts per million
ppb: parts per billion
org/L: organisms/liter

<: less than
MCL: Maximum Contaminant Level
RL: Reporting Limit
LSPC: result less than lower specification
USPC: result greater than upper specification
TIE: Tentatively Identified or Estimated
VIOL: Violation (result exceeds MCL)

Laboratory Contacts:

Lab Director:	Mark Tolbert	470-524-0577
Inorganics:	Carmen Pyles	470-524-0629
Metals:	Shene Jones	470-524-0544
Organics:	Mary Bowman	470-524-0639
GC Mass Spec:	Ralph Schulz	470-524-0684
Microbiology:	Mary Bowman	470-524-0709

**GEORGIA DEPARTMENT OF NATURAL RESOURCES
ENVIRONMENTAL PROTECTION DIVISION**

5804 Peachtree Corners East, Norcross, GA 30092-3403
(678) 248-7384

LABORATORY REPORT

TO: Ga EPD Air Program EPD Air Prot Ambient Monitoring 4244 International Pkwy Ste 120 Atlanta, GA 30354	Date Collected: 7/16/2022
	Time Collected: 0:00
Sample ID: AL04066 Facility Name: SOUTH DEKALB Site ID: 013-089-0002 Location ID: Location Descr:	Sample Collector: H. STREET
	Canister Number: 114332
	Canister Cleaned: 6/27/2022
	Received By: HZ
	Date Received: 7/19/2022
	Time Received: 12:16 PM
	Project: AIR
	Reporting Date: 9/26/2022
	Received Temperature: 21.7 °C

ANALYTE	PARAMETER		EPA	RESULT	UNITS	QUALIFIER	ANALYSIS		MCL or	
	CODE	NOTE	METHOD			RL	ANALYST	DATE	QC Range	
ETO by EPA Method TO-15 QC Batch 197717										
Bromofluorobenzene(Surrogate QC Std.)			EPA TO-15	8.9223	ppbV		KL	7/21/2022	8 to	12
Ethylene Oxide			EPA TO-15	0.0838	ppbV	0.0232	KL	7/21/2022		
ETO Results by EPA Method TO-15										
Bromofluorobenzene(Surrogate QC Std.)			EPA TO-15	63.8213	ug/m3		KL	7/21/2022	57.22 to	85.84
Ethylene Oxide			EPA TO-15	0.1511	ug/m3	0.0418	KL	7/21/2022		

COMMENTS: \$ETO received in the lab at 0.5 in Hg.

ug/L: micrograms/liter
mg/L: milligrams/liter
mg/kg: milligrams/kilogram
ug/kg: micrograms/kilogram
ug/g: micrograms/gram
ppm: parts per million
ppb: parts per billion
org/L: organisms/liter

<: less than
MCL: Maximum Contaminant Level
RL: Reporting Limit
LSPC: result less than lower specification
USPC: result greater than upper specification
TIE: Tentatively Identified or Estimated
VIOL: Violation (result exceeds MCL)

Laboratory Contacts:

Lab Director:	Mark Tolbert	470-524-0577
Inorganics:	Carmen Pyles	470-524-0629
Metals:	Shene Jones	470-524-0544
Organics:	Mary Bowman	470-524-0639
GC Mass Spec:	Ralph Schulz	470-524-0684
Microbiology:	Mary Bowman	470-524-0709

**GEORGIA DEPARTMENT OF NATURAL RESOURCES
ENVIRONMENTAL PROTECTION DIVISION**

5804 Peachtree Corners East, Norcross, GA 30092-3403
(678) 248-7384

LABORATORY REPORT

TO: Ga EPD Air Program EPD Air Prot Ambient Monitoring 4244 International Pkwy Ste 120 Atlanta, GA 30354	Date Collected: 7/26/2022
	Time Collected: 0:00
Sample ID: AL05250 Facility Name: SOUTH DEKALB Site ID: 013-089-0002 Location ID: QCCAN Location Descr:	Sample Collector: H. STREET
	Canister Number: 114393
	Canister Cleaned: 7/11/2022
	Received By: HZ
	Date Received: 7/29/2022
	Time Received: 11:56 AM
	Project: AIR
	Reporting Date: 9/26/2022
	Received Temperature: 24.1 °C

ANALYTE	PARAMETER	EPA				QUALIFIER	ANALYSIS		MCL or	
	CODE	NOTE	METHOD	RESULT	UNITS	RL	ANALYST	DATE	QC Range	
ETO by EPA Method TO-15 QC Batch 197922										
Bromofluorobenzene(Surrogate QC Std.)			EPA TO-15	9.3502	ppbV			KL	8/2/2022	8 to 12
Ethylene Oxide			EPA TO-15	0.0488	ppbV	SQ	0.0232	KL	8/2/2022	
ETO Results by EPA Method TO-15										
Bromofluorobenzene(Surrogate QC Std.)			EPA TO-15	66.8821	ug/m3			KL	8/2/2022	57.22 to 85.84
Ethylene Oxide			EPA TO-15	0.088	ug/m3	SQ	0.0418	KL	8/2/2022	

COMMENTS: \$ETO received in the lab at 5.8 psi. This is an ETO makeup sample for 7-10-2022.

ug/L: micrograms/liter
mg/L: milligrams/liter
mg/kg: milligrams/kilogram
ug/kg: micrograms/kilogram
ug/g: micrograms/gram
ppm: parts per million
ppb: parts per billion
org/L: organisms/liter

<: less than
MCL: Maximum Contaminant Level
RL: Reporting Limit
LSPC: result less than lower specification
USPC: result greater than upper specification
TIE: Tentatively Identified or Estimated
VIOL: Violation (result exceeds MCL)

Laboratory Contacts:

Lab Director:	Mark Tolbert	470-524-0577
Inorganics:	Carmen Pyles	470-524-0629
Metals:	Shene Jones	470-524-0544
Organics:	Mary Bowman	470-524-0639
GC Mass Spec:	Ralph Schulz	470-524-0684
Microbiology:	Mary Bowman	470-524-0709

GEORGIA DEPARTMENT OF NATURAL RESOURCES
ENVIRONMENTAL PROTECTION DIVISION

5804 Peachtree Corners East, Norcross, GA 30092-3403
(678) 248-7384

LABORATORY REPORT

TO: Ga EPD Air Program EPD Air Prot Ambient Monitoring 4244 International Pkwy Ste 120 Atlanta, GA 30354	Date Collected: 7/26/2022 Time Collected: 0:00 Sample Collector: H. STREET Canister Number: 114391 Canister Cleaned: 7/11/2022 Received By: HZ
Sample ID: AL05251 Facility Name: SOUTH DEKALB QA Site ID: 013-089-0002 Location ID: Location Descr:	Date Received: 7/29/2022 Time Received: 11:56 AM Project: AIR Reporting Date: 9/26/2022 Received Temperature: 24.1 °C

ANALYTE	PARAMETER CODE	NOTE	EPA METHOD	RESULT	UNITS	QUALIFIER RL	ANALYSIS ANALYST	DATE	MCL or QC Range
ETO by EPA Method TO-15 QC Batch 197922									
Bromofluorobenzene(Surrogate QC Std.)			EPA TO-15	9.3607	ppbV		KL	8/3/2022	8 to 12
Ethylene Oxide			EPA TO-15	0.0492	ppbV	SQ 0.0232	KL	8/3/2022	
ETO Results by EPA Method TO-15									
Bromofluorobenzene(Surrogate QC Std.)			EPA TO-15	66.9572	ug/m3		KL	8/3/2022	57.22 to 85.84
Ethylene Oxide			EPA TO-15	0.0887	ug/m3	SQ 0.0418	KL	8/3/2022	
ETO NATTS QA Replicate Precision									
Ethylene Oxide			EPA TO-15	14.9	%RPD		KL	8/3/2022	25
ETO QA Replicate Result									
Bromofluorobenzene(Surrogate QC Std.)			EPA TO-15	9.3520	ppbV		KL	8/3/2022	8 to 12
Ethylene Oxide			EPA TO-15	0.0571	ppbV	SQ 0.0232	KL	8/3/2022	

COMMENTS: \$ETO received in the lab at 5.2 psi. This is an ETO makeup sample for 7-10-2022.

ug/L: micrograms/liter
mg/L: milligrams/liter
mg/kg: milligrams/kilogram
ug/kg: micrograms/kilogram
ug/g: micrograms/gram
ppm: parts per million
ppb: parts per billion
org/L: organisms/liter

<: less than
MCL: Maximum Contaminant Level
RL: Reporting Limit
LSPC: result less than lower specification
USPC: result greater than upper specification
TIE: Tentatively Identified or Estimated
VIOL: Violation (result exceeds MCL)

Laboratory Contacts:

Lab Director: Mark Tolbert 470-524-0577
Inorganics: Carmen Pyles 470-524-0629
Metals: Shene Jones 470-524-0544
Organics: Mary Bowman 470-524-0639
GC Mass Spec: Ralph Schulz 470-524-0684
Microbiology: Mary Bowman 470-524-0709

**GEORGIA DEPARTMENT OF NATURAL RESOURCES
ENVIRONMENTAL PROTECTION DIVISION**

5804 Peachtree Corners East, Norcross, GA 30092-3403
(678) 248-7384

LABORATORY REPORT

TO: Ga EPD Air Program EPD Air Prot Ambient Monitoring 4244 International Pkwy Ste 120 Atlanta, GA 30354	Date Collected: 7/28/2022 Time Collected: 0:00 Sample Collector: J. BRYANT Chlorination: Sample Type: Received By: HZ
	Date Received: 8/5/2022 Time Received: 11:26 AM Project: DATA STUDY Reporting Date: 9/26/2022 Received Temperature: 21.4 °C
Sample ID: AL05252 Facility Name: COBB S2 Site ID: S2 Location ID: Location Descr:	

ANALYTE	PARAMETER CODE	NOTE	EPA METHOD	RESULT	UNITS	QUALIFIER RL	ANALYST	ANALYSIS DATE	MCL or QC Range
ETO by EPA Method TO-15 QC Batch 198047									
Bromofluorobenzene(Surrogate QC Std.)			EPA TO-15	9.1504	ppbV		KL	8/9/2022	8 to 12
Ethylene Oxide			EPA TO-15	0.0482	ppbV	SQ 0.0232	KL	8/9/2022	
ETO Results by EPA Method TO-15									
Bromofluorobenzene(Surrogate QC Std.)			EPA TO-15	65.4529	ug/m3		KL	8/9/2022	57.22 to 85.84
Ethylene Oxide			EPA TO-15	0.0869	ug/m3	SQ 0.0418	KL	8/9/2022	

COMMENTS: \$ETO received in the lab at 5.5 in Hg.

ug/L: micrograms/liter
 mg/L: milligrams/liter
 mg/kg: milligrams/kilogram
 ug/kg: micrograms/kilogram
 ug/g: micrograms/gram
 ppm: parts per million
 ppb: parts per billion
 org/L: organisms/liter

<: less than
 MCL: Maximum Contaminant Level
 RL: Reporting Limit
 LSPC: result less than lower specification
 USPC: result greater than upper specification
 TIE: Tentatively Identified or Estimated
 VIOL: Violation (result exceeds MCL)

Laboratory Contacts:

Lab Director:	Mark Tolbert	470-524-0577
Inorganics:	Carmen Pyles	470-524-0629
Metals:	Shene Jones	470-524-0544
Organics:	Mary Bowman	470-524-0639
GC Mass Spec:	Ralph Schulz	470-524-0684
Microbiology:	Mary Bowman	470-524-0709

**GEORGIA DEPARTMENT OF NATURAL RESOURCES
ENVIRONMENTAL PROTECTION DIVISION**

5804 Peachtree Corners East, Norcross, GA 30092-3403
(678) 248-7384

LABORATORY REPORT

TO: Ga EPD Air Program EPD Air Prot Ambient Monitoring 4244 International Pkwy Ste 120 Atlanta, GA 30354	Date Collected: 7/22/2022
	Time Collected: 0:00
Sample ID: AL05253 Facility Name: SOUTH DEKALB Site ID: 013-089-0002 Location ID: Location Descr:	Sample Collector: H. STREET
	Canister Number: 110259
	Canister Cleaned: 7/11/2022
	Received By: HZ
	Date Received: 7/26/2022
	Time Received: 1:26 PM
	Project: AIR
	Reporting Date: 9/26/2022
	Received Temperature: 24.9 °C

ANALYTE	PARAMETER		EPA	RESULT	UNITS	QUALIFIER	ANALYSIS		MCL or	
	CODE	NOTE	METHOD			RL	ANALYST	DATE	QC Range	
ETO by EPA Method TO-15 QC Batch 197846										
Bromofluorobenzene(Surrogate QC Std.)			EPA TO-15	9.7705	ppbV		KL	7/28/2022	8 to	12
Ethylene Oxide			EPA TO-15	0.0880	ppbV	0.0232	KL	7/28/2022		
ETO Results by EPA Method TO-15										
Bromofluorobenzene(Surrogate QC Std.)			EPA TO-15	69.8885	ug/m3		KL	7/28/2022	57.22 to	85.84
Ethylene Oxide			EPA TO-15	0.1586	ug/m3	0.0418	KL	7/28/2022		

COMMENTS: \$ETO received in the lab at 5.8 psi.

ug/L: micrograms/liter
mg/L: milligrams/liter
mg/kg: milligrams/kilogram
ug/kg: micrograms/kilogram
ug/g: micrograms/gram
ppm: parts per million
ppb: parts per billion
org/L: organisms/liter

<: less than
MCL: Maximum Contaminant Level
RL: Reporting Limit
LSPC: result less than lower specification
USPC: result greater than upper specification
TIE: Tentatively Identified or Estimated
VIOL: Violation (result exceeds MCL)

Laboratory Contacts:

Lab Director:	Mark Tolbert	470-524-0577
Inorganics:	Carmen Pyles	470-524-0629
Metals:	Shene Jones	470-524-0544
Organics:	Mary Bowman	470-524-0639
GC Mass Spec:	Ralph Schulz	470-524-0684
Microbiology:	Mary Bowman	470-524-0709

**GEORGIA DEPARTMENT OF NATURAL RESOURCES
ENVIRONMENTAL PROTECTION DIVISION**

5804 Peachtree Corners East, Norcross, GA 30092-3403
(678) 248-7384

LABORATORY REPORT

TO: Ga EPD Air Program EPD Air Prot Ambient Monitoring 4244 International Pkwy Ste 120 Atlanta, GA 30354	Date Collected: 7/27/2022
	Time Collected: 0:00
Sample ID: AL05254 Facility Name: COBB S2 FB Site ID: S2 Location ID: Location Descr:	Sample Collector: J. BRYANT
	Chlorination:
	Sample Type: Trip Blank
	Received By: HZ
	Date Received: 8/5/2022
	Time Received: 11:26 AM
	Project: DATA STUDY
	Reporting Date: 9/26/2022
	Received Temperature: 21.6 °C

ANALYTE	PARAMETER	EPA	QUALIFIER			ANALYSIS		MCL or	
	CODE	NOTE	METHOD	RESULT	UNITS	RL	ANALYST	DATE	QC Range
ETO by EPA Method TO-15 QC Batch 198047									
Bromofluorobenzene(Surrogate QC Std.)			EPA TO-15	9.9073	ppbV		KL	8/9/2022	8 to 12
Ethylene Oxide			EPA TO-15	0	ppbV	ND 0.0232	KL	8/9/2022	
ETO Results by EPA Method TO-15									
Bromofluorobenzene(Surrogate QC Std.)			EPA TO-15	70.867	ug/m3		KL	8/9/2022	57.22 to 85.84
Ethylene Oxide			EPA TO-15	0	ug/m3	ND 0.0418	KL	8/9/2022	

COMMENTS: \$ETO received in the lab at 29 in Hg.

ug/L: micrograms/liter
mg/L: milligrams/liter
mg/kg: milligrams/kilogram
ug/kg: micrograms/kilogram
ug/g: micrograms/gram
ppm: parts per million
ppb: parts per billion
org/L: organisms/liter

<: less than
MCL: Maximum Contaminant Level
RL: Reporting Limit
LSPC: result less than lower specification
USPC: result greater than upper specification
TIE: Tentatively Identified or Estimated
VIOL: Violation (result exceeds MCL)

Laboratory Contacts:

Lab Director:	Mark Tolbert	470-524-0577
Inorganics:	Carmen Pyles	470-524-0629
Metals:	Shene Jones	470-524-0544
Organics:	Mary Bowman	470-524-0639
GC Mass Spec:	Ralph Schulz	470-524-0684
Microbiology:	Mary Bowman	470-524-0709

**GEORGIA DEPARTMENT OF NATURAL RESOURCES
ENVIRONMENTAL PROTECTION DIVISION**

5804 Peachtree Corners East, Norcross, GA 30092-3403
(678) 248-7384

LABORATORY REPORT

TO: Ga EPD Air Program EPD Air Prot Ambient Monitoring 4244 International Pkwy Ste 120 Atlanta, GA 30354	Date Collected: 7/28/2022
	Time Collected: 0:00
Sample ID: AL05255 Facility Name: COVINGTON C2 Site ID: C2 Location ID: Location Descr:	Sample Collector: J. BRYANT
	Chlorination:
	Sample Type:
	Received By: HZ
	Date Received: 8/5/2022
	Time Received: 11:26 AM
	Project: DATA STUDY
	Reporting Date: 9/26/2022
	Received Temperature: 20.1 °C

ANALYTE	PARAMETER	EPA	QUALIFIER			ANALYSIS		MCL or	
	CODE	NOTE	METHOD	RESULT	UNITS	RL	ANALYST	DATE	QC Range
ETO by EPA Method TO-15 QC Batch 198047									
Bromofluorobenzene(Surrogate QC Std.)			EPA TO-15	9.2166	ppbV		KL	8/9/2022	8 to 12
Ethylene Oxide			EPA TO-15	0.0640	ppbV	SQ 0.0232	KL	8/9/2022	
ETO Results by EPA Method TO-15									
Bromofluorobenzene(Surrogate QC Std.)			EPA TO-15	65.9264	ug/m3		KL	8/9/2022	57.22 to 85.84
Ethylene Oxide			EPA TO-15	0.1154	ug/m3	SQ 0.0418	KL	8/9/2022	

COMMENTS: \$ETO received in the lab at 5 in Hg.

ug/L: micrograms/liter
mg/L: milligrams/liter
mg/kg: milligrams/kilogram
ug/kg: micrograms/kilogram
ug/g: micrograms/gram
ppm: parts per million
ppb: parts per billion
org/L: organisms/liter

<: less than
MCL: Maximum Contaminant Level
RL: Reporting Limit
LSPC: result less than lower specification
USPC: result greater than upper specification
TIE: Tentatively Identified or Estimated
VIOL: Violation (result exceeds MCL)

Laboratory Contacts:

Lab Director:	Mark Tolbert	470-524-0577
Inorganics:	Carmen Pyles	470-524-0629
Metals:	Shene Jones	470-524-0544
Organics:	Mary Bowman	470-524-0639
GC Mass Spec:	Ralph Schulz	470-524-0684
Microbiology:	Mary Bowman	470-524-0709

**GEORGIA DEPARTMENT OF NATURAL RESOURCES
ENVIRONMENTAL PROTECTION DIVISION**

5804 Peachtree Corners East, Norcross, GA 30092-3403
(678) 248-7384

LABORATORY REPORT

TO: Ga EPD Air Program EPD Air Prot Ambient Monitoring 4244 International Pkwy Ste 120 Atlanta, GA 30354	Date Collected: 7/26/2022
	Time Collected: 0:00
Sample ID: AL05256 Facility Name: COVINGTON C2 FB Site ID: C2 Location ID: Location Descr:	Sample Collector: J. BRYANT
	Chlorination:
	Sample Type: Trip Blank
	Received By: HZ
	Date Received: 8/5/2022
	Time Received: 11:26 AM
	Project: DATA STUDY
	Reporting Date: 9/26/2022
	Received Temperature: 23.4 °C

ANALYTE	PARAMETER		EPA	RESULT	QUALIFIER		ANALYSIS		MCL or	
	CODE	NOTE	METHOD		UNITS	RL	ANALYST	DATE	QC Range	
ETO by EPA Method TO-15 QC Batch 198047										
Bromofluorobenzene(Surrogate QC Std.)			EPA TO-15	9.7783	ppbV		KL	8/9/2022	8 to	12
Ethylene Oxide			EPA TO-15	0	ppbV	ND 0.0232	KL	8/9/2022		
ETO Results by EPA Method TO-15										
Bromofluorobenzene(Surrogate QC Std.)			EPA TO-15	69.9443	ug/m3		KL	8/9/2022	57.22 to	85.84
Ethylene Oxide			EPA TO-15	0	ug/m3	ND 0.0418	KL	8/9/2022		

COMMENTS: \$ETO received in the lab at 28 in Hg.

ug/L: micrograms/liter
mg/L: milligrams/liter
mg/kg: milligrams/kilogram
ug/kg: micrograms/kilogram
ug/g: micrograms/gram
ppm: parts per million
ppb: parts per billion
org/L: organisms/liter

<: less than
MCL: Maximum Contaminant Level
RL: Reporting Limit
LSPC: result less than lower specification
USPC: result greater than upper specification
TIE: Tentatively Identified or Estimated
VIOL: Violation (result exceeds MCL)

Laboratory Contacts:

Lab Director:	Mark Tolbert	470-524-0577
Inorganics:	Carmen Pyles	470-524-0629
Metals:	Shene Jones	470-524-0544
Organics:	Mary Bowman	470-524-0639
GC Mass Spec:	Ralph Schulz	470-524-0684
Microbiology:	Mary Bowman	470-524-0709

**GEORGIA DEPARTMENT OF NATURAL RESOURCES
ENVIRONMENTAL PROTECTION DIVISION**

5804 Peachtree Corners East, Norcross, GA 30092-3403
(678) 248-7384

LABORATORY REPORT

TO: Ga EPD Air Program EPD Air Prot Ambient Monitoring 4244 International Pkwy Ste 120 Atlanta, GA 30354	Date Collected: 7/27/2022
	Time Collected: 0:00
Sample ID: AL05257 Facility Name: FULTON F2 FB Site ID: F2 Location ID: Location Descr:	Sample Collector: J. BRYANT
	Chlorination:
	Sample Type:
	Received By: HZ
	Date Received: 8/5/2022
	Time Received: 11:26 AM
	Project: DATA STUDY
	Reporting Date: 9/26/2022
	Received Temperature: 22.6 °C

ANALYTE	PARAMETER		EPA	RESULT	QUALIFIER		ANALYSIS		MCL or	
	CODE	NOTE	METHOD		UNITS	RL	ANALYST	DATE	QC Range	
ETO by EPA Method TO-15 QC Batch 198047										
Bromofluorobenzene(Surrogate QC Std.)			EPA TO-15	9.8780	ppbV		KL	8/9/2022	8 to	12
Ethylene Oxide			EPA TO-15	0	ppbV	ND 0.0232	KL	8/9/2022		
ETO Results by EPA Method TO-15										
Bromofluorobenzene(Surrogate QC Std.)			EPA TO-15	70.6574	ug/m3		KL	8/9/2022	57.22 to	85.84
Ethylene Oxide			EPA TO-15	0	ug/m3	ND 0.0418	KL	8/9/2022		

COMMENTS: \$ETO received in the lab at 29 in Hg.

ug/L: micrograms/liter
mg/L: milligrams/liter
mg/kg: milligrams/kilogram
ug/kg: micrograms/kilogram
ug/g: micrograms/gram
ppm: parts per million
ppb: parts per billion
org/L: organisms/liter

<: less than
MCL: Maximum Contaminant Level
RL: Reporting Limit
LSPC: result less than lower specification
USPC: result greater than upper specification
TIE: Tentatively Identified or Estimated
VIOL: Violation (result exceeds MCL)

Laboratory Contacts:

Lab Director:	Mark Tolbert	470-524-0577
Inorganics:	Carmen Pyles	470-524-0629
Metals:	Shene Jones	470-524-0544
Organics:	Mary Bowman	470-524-0639
GC Mass Spec:	Ralph Schulz	470-524-0684
Microbiology:	Mary Bowman	470-524-0709

**GEORGIA DEPARTMENT OF NATURAL RESOURCES
ENVIRONMENTAL PROTECTION DIVISION**

5804 Peachtree Corners East, Norcross, GA 30092-3403
(678) 248-7384

LABORATORY REPORT

TO: Ga EPD Air Program EPD Air Prot Ambient Monitoring 4244 International Pkwy Ste 120 Atlanta, GA 30354	Date Collected: 7/28/2022
	Time Collected: 0:00
Sample ID: AL05258 Facility Name: GENERAL COFFEE Site ID: 013-069-0002 Location ID: QCCAN Location Descr:	Sample Collector: C KNOX
	Chlorination:
	Sample Type:
	Received By: HZ
	Date Received: 8/8/2022
	Time Received: 3:35 PM
	Project: DATA STUDY
	Reporting Date: 9/26/2022
	Received Temperature: 23.6 °C

ANALYTE	PARAMETER	EPA	RESULT	QUALIFIER	ANALYSIS	MCL or				
	CODE	NOTE		METHOD	RL		ANALYST	QC Range		
ETO by EPA Method TO-15 QC Batch 198047										
Bromofluorobenzene(Surrogate QC Std.)			EPA TO-15	8.9930	ppbV					
Ethylene Oxide			EPA TO-15	0.0486	ppbV	SQ 2	0.0232	KL	8/9/2022	8 to 12
ETO Results by EPA Method TO-15										
Bromofluorobenzene(Surrogate QC Std.)			EPA TO-15	64.327	ug/m3			KL	8/9/2022	57.22 to 85.84
Ethylene Oxide			EPA TO-15	0.0876	ug/m3	SQ 2	0.0418	KL	8/9/2022	

COMMENTS: \$ETO received in the lab at 19.6 psi. Pressure difference of >0.5 psi between receipt from field and receipt in lab.

ug/L: micrograms/liter
mg/L: milligrams/liter
mg/kg: milligrams/kilogram
ug/kg: micrograms/kilogram
ug/g: micrograms/gram
ppm: parts per million
ppb: parts per billion
org/L: organisms/liter

<: less than
MCL: Maximum Contaminant Level
RL: Reporting Limit
LSPC: result less than lower specification
USPC: result greater than upper specification
TIE: Tentatively Identified or Estimated
VIOL: Violation (result exceeds MCL)

Laboratory Contacts:

Lab Director:	Mark Tolbert	470-524-0577
Inorganics:	Carmen Pyles	470-524-0629
Metals:	Shene Jones	470-524-0544
Organics:	Mary Bowman	470-524-0639
GC Mass Spec:	Ralph Schulz	470-524-0684
Microbiology:	Mary Bowman	470-524-0709

**GEORGIA DEPARTMENT OF NATURAL RESOURCES
ENVIRONMENTAL PROTECTION DIVISION**

5804 Peachtree Corners East, Norcross, GA 30092-3403
(678) 248-7384

LABORATORY REPORT

TO: Ga EPD Air Program EPD Air Prot Ambient Monitoring 4244 International Pkwy Ste 120 Atlanta, GA 30354	Date Collected: 7/28/2022 Time Collected: 0:00 Sample Collector: H. STREET Canister Number: 114389 Canister Cleaned: 7/11/2022 Received By: HZ
	Date Received: 8/1/2022 Time Received: 11:13 AM Project: AIR Reporting Date: 9/26/2022 Received Temperature: 21.0 °C
Sample ID: AL05260 Facility Name: SOUTH DEKALB Site ID: 013-089-0002 Location ID: Location Descr:	

ANALYTE	PARAMETER CODE	NOTE	EPA METHOD	RESULT	UNITS	QUALIFIER RL	ANALYSIS ANALYST	DATE	MCL or QC Range
ETO by EPA Method TO-15 QC Batch 197922									
Bromofluorobenzene(Surrogate QC Std.)			EPA TO-15	9.1856	ppbV		KL	8/3/2022	8 to 12
Ethylene Oxide			EPA TO-15	0.0491	ppbV	SQ 0.0232	KL	8/3/2022	
ETO Results by EPA Method TO-15									
Bromofluorobenzene(Surrogate QC Std.)			EPA TO-15	65.7047	ug/m3		KL	8/3/2022	57.22 to 85.84
Ethylene Oxide			EPA TO-15	0.0885	ug/m3	SQ 0.0418	KL	8/3/2022	

COMMENTS: \$ETO received in the lab at 5.4 psi.

ug/L: micrograms/liter
 mg/L: milligrams/liter
 mg/kg: milligrams/kilogram
 ug/kg: micrograms/kilogram
 ug/g: micrograms/gram
 ppm: parts per million
 ppb: parts per billion
 org/L: organisms/liter

<: less than
 MCL: Maximum Contaminant Level
 RL: Reporting Limit
 LSPC: result less than lower specification
 USPC: result greater than upper specification
 TIE: Tentatively Identified or Estimated
 VIOL: Violation (result exceeds MCL)

Laboratory Contacts:

Lab Director: Mark Tolbert 470-524-0577
 Inorganics: Carmen Pyles 470-524-0629
 Metals: Shene Jones 470-524-0544
 Organics: Mary Bowman 470-524-0639
 GC Mass Spec: Ralph Schulz 470-524-0684
 Microbiology: Mary Bowman 470-524-0709

**GEORGIA DEPARTMENT OF NATURAL RESOURCES
ENVIRONMENTAL PROTECTION DIVISION**

5804 Peachtree Corners East, Norcross, GA 30092-3403
(678) 248-7384

LABORATORY REPORT

TO: Ga EPD Air Program EPD Air Prot Ambient Monitoring 4244 International Pkwy Ste 120 Atlanta, GA 30354	Date Collected: 7/28/2022 Time Collected: 0:00 Sample Collector: H. STREET Canister Number: 114322 Canister Cleaned: 7/11/2022 Received By: HZ
	Date Received: 8/1/2022 Time Received: 11:12 AM Project: AIR Reporting Date: 9/26/2022 Received Temperature: 21.7 °C
Sample ID: AL05261 Facility Name: SOUTH DEKALB Site ID: 013-089-0002 Location ID: Location Descr:	

ANALYTE	PARAMETER CODE	NOTE	EPA METHOD	RESULT	UNITS	QUALIFIER RL	ANALYSIS ANALYST	DATE	MCL or QC Range
ETO by EPA Method TO-15 QC Batch 197922									
Bromofluorobenzene(Surrogate QC Std.)			EPA TO-15	9.1790	ppbV		KL	8/3/2022	8 to 12
Ethylene Oxide			EPA TO-15	0.0488	ppbV	SQ 0.0232	KL	8/3/2022	
ETO Results by EPA Method TO-15									
Bromofluorobenzene(Surrogate QC Std.)			EPA TO-15	65.6575	ug/m3		KL	8/3/2022	57.22 to 85.84
Ethylene Oxide			EPA TO-15	0.088	ug/m3	SQ 0.0418	KL	8/3/2022	

COMMENTS: \$ETO received in the lab at 1 in Hg.

ug/L: micrograms/liter
 mg/L: milligrams/liter
 mg/kg: milligrams/kilogram
 ug/kg: micrograms/kilogram
 ug/g: micrograms/gram
 ppm: parts per million
 ppb: parts per billion
 org/L: organisms/liter

<: less than
 MCL: Maximum Contaminant Level
 RL: Reporting Limit
 LSPC: result less than lower specification
 USPC: result greater than upper specification
 TIE: Tentatively Identified or Estimated
 VIOL: Violation (result exceeds MCL)

Laboratory Contacts:

Lab Director:	Mark Tolbert	470-524-0577
Inorganics:	Carmen Pyles	470-524-0629
Metals:	Shene Jones	470-524-0544
Organics:	Mary Bowman	470-524-0639
GC Mass Spec:	Ralph Schulz	470-524-0684
Microbiology:	Mary Bowman	470-524-0709

**GEORGIA DEPARTMENT OF NATURAL RESOURCES
ENVIRONMENTAL PROTECTION DIVISION**

5804 Peachtree Corners East, Norcross, GA 30092-3403
(678) 248-7384

LABORATORY REPORT

TO: Ga EPD Air Program EPD Air Prot Ambient Monitoring 4244 International Pkwy Ste 120 Atlanta, GA 30354	Date Collected: 7/28/2022
	Time Collected: 0:00
Sample ID: AL05262 Facility Name: FULTON F2 Site ID: F2 Location ID: Location Descr:	Sample Collector: J. BRYANT
	Chlorination:
	Sample Type:
	Received By: HZ
	Date Received: 8/5/2022
	Time Received: 11:26 AM
	Project: DATA STUDY
	Reporting Date: 9/26/2022
	Received Temperature: 20.1 °C

ANALYTE	PARAMETER		EPA	RESULT	UNITS	QUALIFIER	ANALYSIS		MCL or	
	CODE	NOTE	METHOD			RL	ANALYST	DATE	QC	Range
ETO by EPA Method TO-15 QC Batch 198047										
Bromofluorobenzene(Surrogate QC Std.)			EPA TO-15	9.4133	ppbV		KL	8/9/2022	8 to	12
Ethylene Oxide			EPA TO-15	0.1439	ppbV	0.0232	KL	8/9/2022		
ETO Results by EPA Method TO-15										
Bromofluorobenzene(Surrogate QC Std.)			EPA TO-15	67.3334	ug/m3		KL	8/9/2022	57.22 to	85.84
Ethylene Oxide			EPA TO-15	0.2594	ug/m3	0.0418	KL	8/9/2022		

COMMENTS: \$ETO received in the lab at 7 in Hg.

ug/L: micrograms/liter
mg/L: milligrams/liter
mg/kg: milligrams/kilogram
ug/kg: micrograms/kilogram
ug/g: micrograms/gram
ppm: parts per million
ppb: parts per billion
org/L: organisms/liter

<: less than
MCL: Maximum Contaminant Level
RL: Reporting Limit
LSPC: result less than lower specification
USPC: result greater than upper specification
TIE: Tentatively Identified or Estimated
VIOL: Violation (result exceeds MCL)

Laboratory Contacts:

Lab Director:	Mark Tolbert	470-524-0577
Inorganics:	Carmen Pyles	470-524-0629
Metals:	Shene Jones	470-524-0544
Organics:	Mary Bowman	470-524-0639
GC Mass Spec:	Ralph Schulz	470-524-0684
Microbiology:	Mary Bowman	470-524-0709

**GEORGIA DEPARTMENT OF NATURAL RESOURCES
ENVIRONMENTAL PROTECTION DIVISION**

5804 Peachtree Corners East, Norcross, GA 30092-3403
(678) 248-7384

LABORATORY REPORT

TO: Ga EPD Air Program EPD Air Prot Ambient Monitoring 4244 International Pkwy Ste 120 Atlanta, GA 30354	Date Collected: 7/28/2022
	Time Collected: 0:00
Sample ID: AL05263 Facility Name: south dekalb qa Site ID: 013-089-0002 Location ID: Location Descr:	Sample Collector: H. STREET
	Canister Number: 114379
	Canister Cleaned: 7/11/2022
	Received By: HZ
	Date Received: 8/1/2022
	Time Received: 11:13 AM
	Project: AIR
	Reporting Date: 9/26/2022
	Received Temperature: 23.6 °C

ANALYTE	PARAMETER	EPA	QUALIFIER			ANALYSIS		MCL or		
	CODE	NOTE	METHOD	RESULT	UNITS	RL	ANALYST	DATE	QC Range	
ETO by EPA Method TO-15 QC Batch 197922										
Bromofluorobenzene(Surrogate QC Std.)			EPA TO-15	9.7100	ppbV		KL	8/3/2022	8 to	12
Ethylene Oxide			EPA TO-15	0.0560	ppbV	SQ	0.0232	KL	8/3/2022	
ETO Results by EPA Method TO-15										
Bromofluorobenzene(Surrogate QC Std.)			EPA TO-15	69.4557	ug/m3		KL	8/3/2022	57.22 to	85.84
Ethylene Oxide			EPA TO-15	0.1009	ug/m3	SQ	0.0418	KL	8/3/2022	
ETO NATTS QA Replicate Precision										
Ethylene Oxide			EPA TO-15	6.40	%RPD		KL	8/3/2022		25
ETO QA Replicate Result										
Bromofluorobenzene(Surrogate QC Std.)			EPA TO-15	9.7431	ppbV		KL	8/3/2022	8 to	12
Ethylene Oxide			EPA TO-15	0.0597	ppbV	SQ	0.0232	KL	8/3/2022	

COMMENTS: \$ETO received in the lab at 1 in Hg.

ug/L: micrograms/liter
mg/L: milligrams/liter
mg/kg: milligrams/kilogram
ug/kg: micrograms/kilogram
ug/g: micrograms/gram
ppm: parts per million
ppb: parts per billion
org/L: organisms/liter

<: less than
MCL: Maximum Contaminant Level
RL: Reporting Limit
LSPC: result less than lower specification
USPC: result greater than upper specification
TIE: Tentatively Identified or Estimated
VIOL: Violation (result exceeds MCL)

Laboratory Contacts:

Lab Director:	Mark Tolbert	470-524-0577
Inorganics:	Carmen Pyles	470-524-0629
Metals:	Shene Jones	470-524-0544
Organics:	Mary Bowman	470-524-0639
GC Mass Spec:	Ralph Schulz	470-524-0684
Microbiology:	Mary Bowman	470-524-0709

**GEORGIA DEPARTMENT OF NATURAL RESOURCES
ENVIRONMENTAL PROTECTION DIVISION**

5804 Peachtree Corners East, Norcross, GA 30092-3403
(678) 248-7384

LABORATORY REPORT

TO: Ga EPD Air Program EPD Air Prot Ambient Monitoring 4244 International Pkwy Ste 120 Atlanta, GA 30354	Date Collected: 7/28/2022
	Time Collected: 0:00
Sample ID: AL05264 Facility Name: SOUTH DEKALB Site ID: 013-089-0002 Location ID: Location Descr:	Sample Collector: H. STREET
	Canister Number: 114378
	Canister Cleaned: 7/11/2022
	Received By: HZ
	Date Received: 8/1/2022
	Time Received: 11:12 AM
	Project: AIR
	Reporting Date: 9/26/2022
	Received Temperature: 19.9 °C

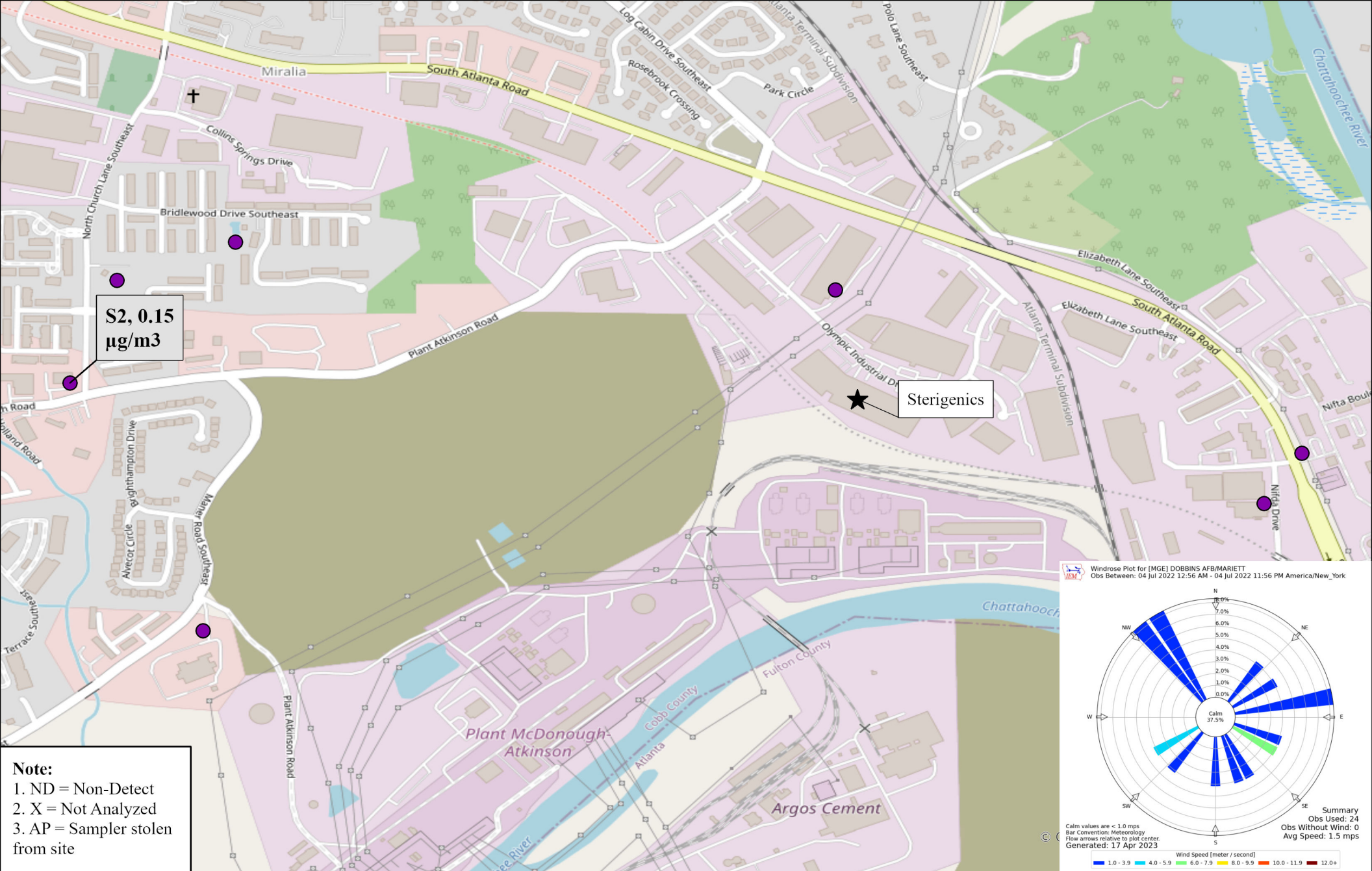
ANALYTE	PARAMETER CODE	NOTE	EPA METHOD	RESULT	UNITS	QUALIFIER RL	ANALYSIS		MCL or	
							ANALYST	DATE	QC Range	
ETO by EPA Method TO-15 QC Batch 197922										
Bromofluorobenzene(Surrogate QC Std.)			EPA TO-15	9.8765	ppbV		KL	8/2/2022	8 to	12
Ethylene Oxide			EPA TO-15	0.0827	ppbV	0.0232	KL	8/2/2022		
ETO Results by EPA Method TO-15										
Bromofluorobenzene(Surrogate QC Std.)			EPA TO-15	70.6467	ug/m3		KL	8/2/2022	57.22 to	85.84
Ethylene Oxide			EPA TO-15	0.1491	ug/m3	0.0418	KL	8/2/2022		
COMMENTS: \$ETO received in the lab at 5.6 psi.										

ug/L: micrograms/liter
mg/L: milligrams/liter
mg/kg: milligrams/kilogram
ug/kg: micrograms/kilogram
ug/g: micrograms/gram
ppm: parts per million
ppb: parts per billion
org/L: organisms/liter

<: less than
MCL: Maximum Contaminant Level
RL: Reporting Limit
LSPC: result less than lower specification
USPC: result greater than upper specification
TIE: Tentatively Identified or Estimated
VIOL: Violation (result exceeds MCL)

Laboratory Contacts:

Lab Director:	Mark Tolbert	470-524-0577
Inorganics:	Carmen Pyles	470-524-0629
Metals:	Shene Jones	470-524-0544
Organics:	Mary Bowman	470-524-0639
GC Mass Spec:	Ralph Schulz	470-524-0684
Microbiology:	Mary Bowman	470-524-0709



0 0.08 0.17
Miles



Site ID, Concentration ($\mu\text{g}/\text{m}^3$)

Ethylene Oxide Sampling
Cobb County, GA

07/04/2022

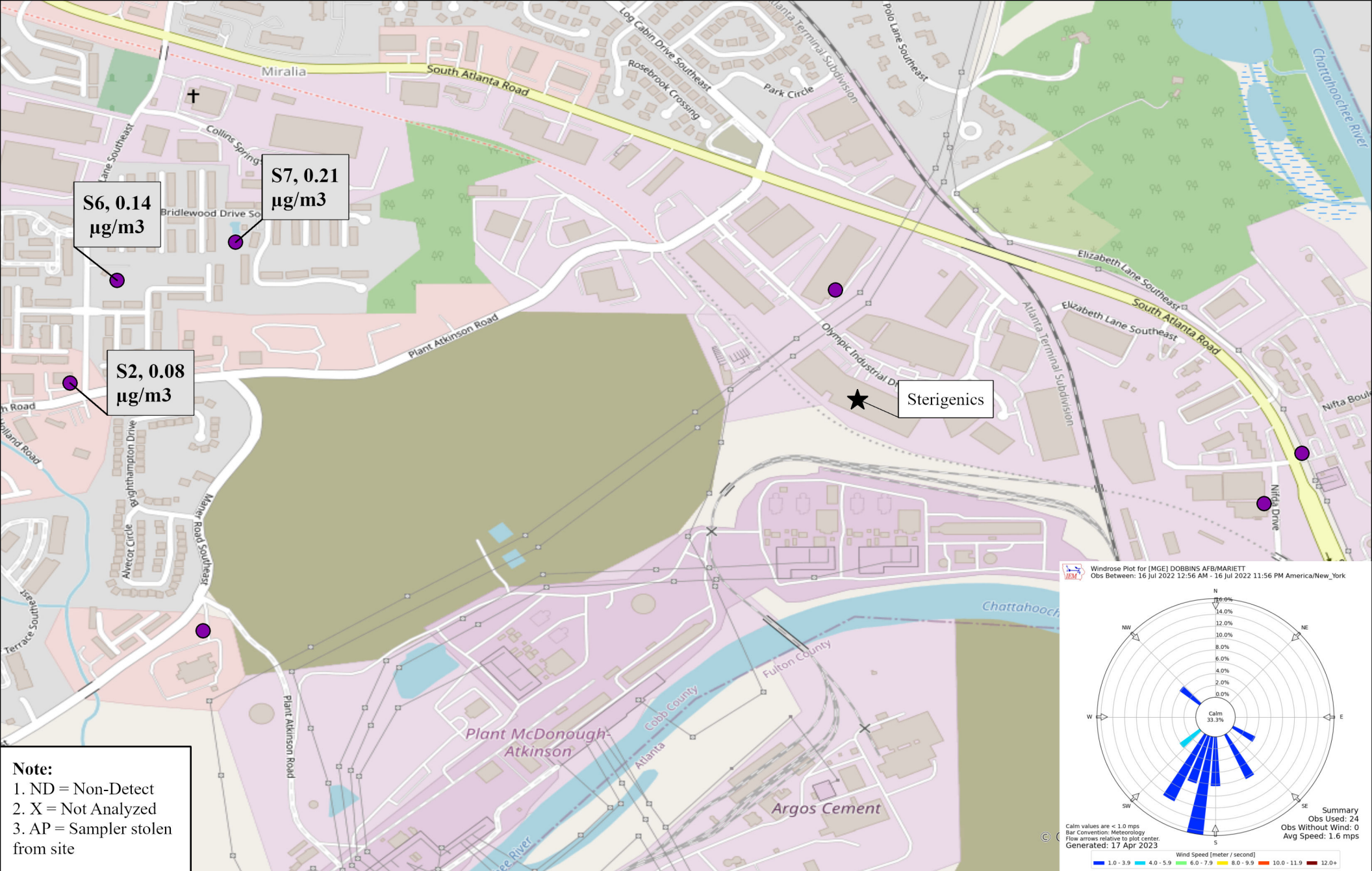
Sampled By: Georgia Environmental Protection Division

Analyzed By: Georgia Environmental Protection Division



GEORGIA
DEPARTMENT OF NATURAL RESOURCES

ENVIRONMENTAL PROTECTION DIVISION



0 0.08 0.17
Miles



Site ID, Concentration ($\mu\text{g}/\text{m}^3$)

Ethylene Oxide Sampling
Cobb County, GA

07/16/2022

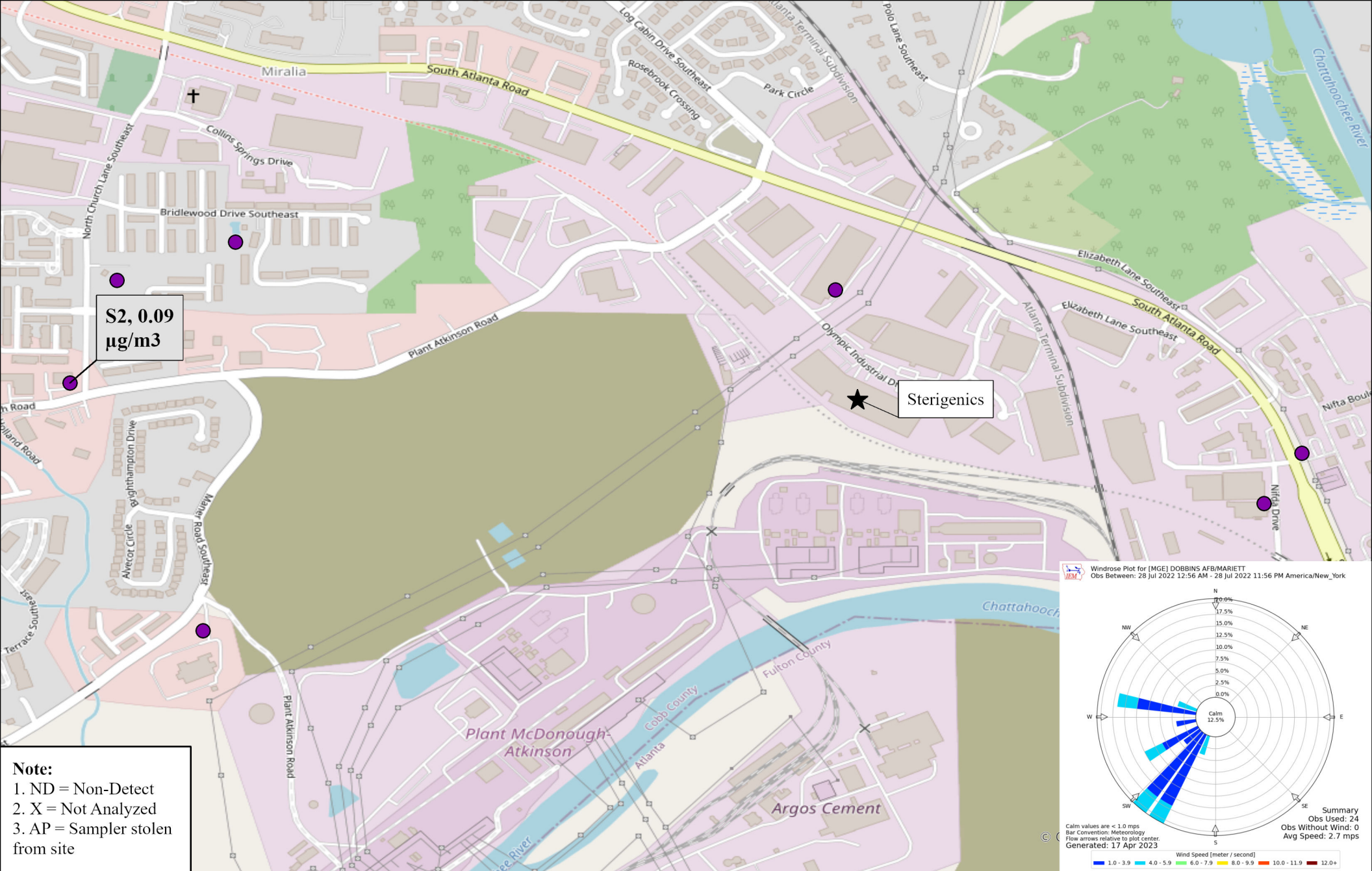
Sampled By: Georgia Environmental Protection Division

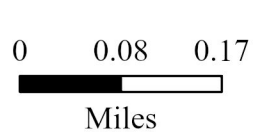
Analyzed By: Georgia Environmental Protection Division



GEORGIA
DEPARTMENT OF NATURAL RESOURCES

ENVIRONMENTAL PROTECTION DIVISION





**Site ID, Number of Samples,
Concentration ($\mu\text{g}/\text{m}^3$)**

Ethylene Oxide Sampling
Cobb County, GA

July 2022 Site Average Values
Note: Not detectable values were included in average calculations as a value of 0.
Sampled By: Georgia Environmental Protection Division
Analyzed By: Georgia Environmental Protection Division



GEORGIA
DEPARTMENT OF NATURAL RESOURCES

ENVIRONMENTAL PROTECTION DIVISION