



GEORGIA

DEPARTMENT OF NATURAL RESOURCES

ENVIRONMENTAL PROTECTION DIVISION

Richard E. Dunn, Director

EPD Director's Office
 2 Martin Luther King, Jr. Drive
 Suite 1456, East Tower
 Atlanta, Georgia 30334
 404-656-4713

May 3, 2023

MEMORANDUM

To: James Boylan, Air Branch Chief *JB*

Through: DeAnna Oser, Assistant Branch Chief

From: Jaime Gore, Operations 1 Unit Manager

RE: Cobb – June 10 – June 22, 2022, Sampling Results for Ethylene Oxide

Samples of Ethylene Oxide (EtO) were collected during the period of June 10 – June 22, 2022, by the Ambient Monitoring Program in the Cobb area to characterize the EtO concentration. Each of the samples were sent to the Georgia Environmental Protection Division Laboratory (EPD) for analysis. The Null code “AA” is applied to indicate Sample Pressure was out of limits. The Qualifier code of “3” was given to samples to indicate that integrity of the field data may have been compromised.

Location	Date	Qualifier	EtO Concentration (µg/m ³)
S2	06/10/2022	3	0.14
S2	06/22/2022	3	0.32
S2 QA	06/10/2022	3	0.16
S6 SA	06/22/2022		AA
S7 SA	06/22/2022		0.18

If you have any questions, please let me know.

JCG

**GEORGIA DEPARTMENT OF NATURAL RESOURCES
ENVIRONMENTAL PROTECTION DIVISION**

5804 Peachtree Corners East, Norcross, GA 30092-3403
(678) 248-7384

LABORATORY REPORT

TO: Ga EPD Air Program EPD Air Prot Ambient Monitoring 4244 International Pkwy Ste 120 Atlanta, GA 30354	Date Collected: 6/10/2022 Time Collected: 0:00 Sample Collector: J. BRYANT Chlorination: Sample Type: Received By: HZ Date Received: 6/21/2022 Time Received: 10:33 AM Project: DATA STUDY Reporting Date: 8/26/2022 Received Temperature: 22.9 °C
Sample ID: AL01115 Facility Name: FULTON F2-QA Site ID: F2-QA Location ID: QCCAN Location Descr:	

ANALYTE	PARAMETER CODE	EPA NOTE	METHOD	RESULT	UNITS	QUALIFIER RL	ANALYSIS		MCL or QC Range
							ANALYST	DATE	
ETO by EPA Method TO-15 QC Batch 197220									
Bromofluorobenzene(Surrogate QC Std.)			EPA TO-15	9.6901	ppbV		KL	6/23/2022	8 to 12
Ethylene Oxide			EPA TO-15	0.1396	ppbV	0.0232	KL	6/23/2022	
ETO Results by EPA Method TO-15									
Bromofluorobenzene(Surrogate QC Std.)			EPA TO-15	69.3134	ug/m3		KL	6/23/2022	57.22 to 85.84
Ethylene Oxide			EPA TO-15	0.2516	ug/m3	0.0418	KL	6/23/2022	

COMMENTS: \$ETO received in the lab at 5.5 in Hg.

ug/L: micrograms/liter
 mg/L: milligrams/liter
 mg/kg: milligrams/kilogram
 ug/kg: micrograms/kilogram
 ug/g: micrograms/gram
 ppm: parts per million
 ppb: parts per billion
 org/L: organisms/liter

<: less than
 MCL: Maximum Contaminant Level
 RL: Reporting Limit
 LSPC: result less than lower specification
 USPC: result greater than upper specification
 TIE: Tentatively Identified or Estimated
 VIOL: Violation (result exceeds MCL)

Laboratory Contacts:

Lab Director: Mark Tolbert 470-524-0577
 Inorganics: Carmen Pyles 470-524-0629
 Metals: Shene Jones 470-524-0544
 Organics: Mary Bowman 470-524-0639
 GC Mass Spec: Ralph Schulz 470-524-0684
 Microbiology: Mary Bowman 470-524-0709

**GEORGIA DEPARTMENT OF NATURAL RESOURCES
ENVIRONMENTAL PROTECTION DIVISION**

5804 Peachtree Corners East, Norcross, GA 30092-3403
(678) 248-7384

LABORATORY REPORT

TO: Ga EPD Air Program EPD Air Prot Ambient Monitoring 4244 International Pkwy Ste 120 Atlanta, GA 30354	Date Collected: 6/10/2022 Time Collected: 0:00 Sample Collector: J. BRYANT Chlorination: Sample Type: Received By: HZ Date Received: 6/21/2022 Time Received: 10:33 AM Project: DATA STUDY Reporting Date: 8/26/2022 Received Temperature: 21.6 °C
Sample ID: AL01116 Facility Name: COBB S2-QA Site ID: S2-QA Location ID: Location Descr:	

ANALYTE	PARAMETER CODE	EPA NOTE	METHOD	RESULT	UNITS	QUALIFIER RL	ANALYSIS		MCL or QC Range
							ANALYST	DATE	
ETO by EPA Method TO-15 QC Batch 197220									
Bromofluorobenzene(Surrogate QC Std.)			EPA TO-15	10.1850	ppbV		KL	6/23/2022	8 to 12
Ethylene Oxide			EPA TO-15	0.0896	ppbV	0.0232	KL	6/23/2022	
ETO Results by EPA Method TO-15									
Bromofluorobenzene(Surrogate QC Std.)			EPA TO-15	72.8534	ug/m3		KL	6/23/2022	57.22 to 85.84
Ethylene Oxide			EPA TO-15	0.1615	ug/m3	0.0418	KL	6/23/2022	

COMMENTS: \$ETO received in the lab at 4.5 in Hg.

ug/L: micrograms/liter
 mg/L: milligrams/liter
 mg/kg: milligrams/kilogram
 ug/kg: micrograms/kilogram
 ug/g: micrograms/gram
 ppm: parts per million
 ppb: parts per billion
 org/L: organisms/liter

<: less than
 MCL: Maximum Contaminant Level
 RL: Reporting Limit
 LSPC: result less than lower specification
 USPC: result greater than upper specification
 TIE: Tentatively Identified or Estimated
 VIOL: Violation (result exceeds MCL)

Laboratory Contacts:

Lab Director: Mark Tolbert 470-524-0577
 Inorganics: Carmen Pyles 470-524-0629
 Metals: Shene Jones 470-524-0544
 Organics: Mary Bowman 470-524-0639
 GC Mass Spec: Ralph Schulz 470-524-0684
 Microbiology: Mary Bowman 470-524-0709

**GEORGIA DEPARTMENT OF NATURAL RESOURCES
ENVIRONMENTAL PROTECTION DIVISION**

5804 Peachtree Corners East, Norcross, GA 30092-3403
(678) 248-7384

LABORATORY REPORT

TO: Ga EPD Air Program EPD Air Prot Ambient Monitoring 4244 International Pkwy Ste 120 Atlanta, GA 30354	Date Collected: 6/10/2022 Time Collected: 0:00 Sample Collector: J. BRYANT Chlorination: Sample Type: Received By: HZ Date Received: 6/21/2022 Time Received: 10:33 AM Project: DATA STUDY Reporting Date: 8/26/2022 Received Temperature: 22.6 °C
Sample ID: AL01117 Facility Name: COBB S2 Site ID: S2 Location ID: Location Descr:	

ANALYTE	PARAMETER CODE	EPA NOTE	METHOD	RESULT	UNITS	QUALIFIER RL	ANALYSIS		MCL or QC Range
							ANALYST	DATE	
ETO by EPA Method TO-15 QC Batch 197220									
Bromofluorobenzene(Surrogate QC Std.)			EPA TO-15	9.9067	ppbV		KL	6/23/2022	8 to 12
Ethylene Oxide			EPA TO-15	0.0751	ppbV	0.0232	KL	6/23/2022	
ETO Results by EPA Method TO-15									
Bromofluorobenzene(Surrogate QC Std.)			EPA TO-15	70.8627	ug/m3		KL	6/23/2022	57.22 to 85.84
Ethylene Oxide			EPA TO-15	0.1354	ug/m3	0.0418	KL	6/23/2022	

COMMENTS: \$ETO received in the lab at 5 in Hg.

ug/L: micrograms/liter
 mg/L: milligrams/liter
 mg/kg: milligrams/kilogram
 ug/kg: micrograms/kilogram
 ug/g: micrograms/gram
 ppm: parts per million
 ppb: parts per billion
 org/L: organisms/liter

<: less than
 MCL: Maximum Contaminant Level
 RL: Reporting Limit
 LSPC: result less than lower specification
 USPC: result greater than upper specification
 TIE: Tentatively Identified or Estimated
 VIOL: Violation (result exceeds MCL)

Laboratory Contacts:

Lab Director: Mark Tolbert 470-524-0577
 Inorganics: Carmen Pyles 470-524-0629
 Metals: Shene Jones 470-524-0544
 Organics: Mary Bowman 470-524-0639
 GC Mass Spec: Ralph Schulz 470-524-0684
 Microbiology: Mary Bowman 470-524-0709

**GEORGIA DEPARTMENT OF NATURAL RESOURCES
ENVIRONMENTAL PROTECTION DIVISION**

5804 Peachtree Corners East, Norcross, GA 30092-3403
(678) 248-7384

LABORATORY REPORT

TO: Ga EPD Air Program EPD Air Prot Ambient Monitoring 4244 International Pkwy Ste 120 Atlanta, GA 30354	Date Collected: 6/4/2022 Time Collected: 0:00 Sample Collector: H. STREET Canister Number: 114354 Canister Cleaned: 5/16/2022 Received By: HZ Date Received: 6/7/2022 Time Received: 11:26 AM Project: AIR Reporting Date: 8/26/2022 Received Temperature: 19.9 °C
Sample ID: AL01118 Facility Name: SOUTH DEKALB Site ID: 013-089-0002 Location ID: Location Descr:	

ANALYTE	PARAMETER CODE	EPA NOTE	METHOD	RESULT	UNITS	QUALIFIER RL	ANALYSIS		MCL or QC Range
							ANALYST	DATE	
ETO by EPA Method TO-15 QC Batch 196994									
Bromofluorobenzene(Surrogate QC Std.)			EPA TO-15	9.8946	ppbV		KL	6/8/2022	8 to 12
Ethylene Oxide			EPA TO-15	0.0602	ppbV	SQ	0.0232	KL	6/8/2022
ETO Results by EPA Method TO-15									
Bromofluorobenzene(Surrogate QC Std.)			EPA TO-15	70.7762	ug/m3		KL	6/8/2022	57.22 to 85.84
Ethylene Oxide			EPA TO-15	0.1085	ug/m3	SQ	0.0418	KL	6/8/2022

COMMENTS: \$ETO received in the lab at 5.4 psi.

ug/L: micrograms/liter
 mg/L: milligrams/liter
 mg/kg: milligrams/kilogram
 ug/kg: micrograms/kilogram
 ug/g: micrograms/gram
 ppm: parts per million
 ppb: parts per billion
 org/L: organisms/liter

<: less than
 MCL: Maximum Contaminant Level
 RL: Reporting Limit
 LSPC: result less than lower specification
 USPC: result greater than upper specification
 TIE: Tentatively Identified or Estimated
 VIOL: Violation (result exceeds MCL)

Laboratory Contacts:

Lab Director: Mark Tolbert 470-524-0577
 Inorganics: Carmen Pyles 470-524-0629
 Metals: Shene Jones 470-524-0544
 Organics: Mary Bowman 470-524-0639
 GC Mass Spec: Ralph Schulz 470-524-0684
 Microbiology: Mary Bowman 470-524-0709

**GEORGIA DEPARTMENT OF NATURAL RESOURCES
ENVIRONMENTAL PROTECTION DIVISION**

5804 Peachtree Corners East, Norcross, GA 30092-3403
(678) 248-7384

LABORATORY REPORT

TO: Ga EPD Air Program EPD Air Prot Ambient Monitoring 4244 International Pkwy Ste 120 Atlanta, GA 30354	Date Collected: 6/10/2022 Time Collected: 0:00 Sample Collector: J. BRYANT Chlorination: Sample Type: Received By: HZ Date Received: 6/21/2022 Time Received: 10:33 AM Project: DATA STUDY Reporting Date: 8/26/2022 Received Temperature: 23.5 °C
Sample ID: AL01119 Facility Name: COVINGTON C2 Site ID: C2 Location ID: Location Descr:	

ANALYTE	PARAMETER CODE	EPA NOTE	METHOD	RESULT	UNITS	QUALIFIER RL	ANALYSIS		MCL or QC Range
							ANALYST	DATE	
ETO by EPA Method TO-15 QC Batch 197220									
Bromofluorobenzene(Surrogate QC Std.)			EPA TO-15	10.2235	ppbV		KL	6/23/2022	8 to 12
Ethylene Oxide			EPA TO-15	0.0792	ppbV	0.0232	KL	6/23/2022	
ETO Results by EPA Method TO-15									
Bromofluorobenzene(Surrogate QC Std.)			EPA TO-15	73.1288	ug/m3		KL	6/23/2022	57.22 to 85.84
Ethylene Oxide			EPA TO-15	0.1428	ug/m3	0.0418	KL	6/23/2022	

COMMENTS: \$ETO received in the lab at 5.5 in Hg.

ug/L: micrograms/liter
 mg/L: milligrams/liter
 mg/kg: milligrams/kilogram
 ug/kg: micrograms/kilogram
 ug/g: micrograms/gram
 ppm: parts per million
 ppb: parts per billion
 org/L: organisms/liter

<: less than
 MCL: Maximum Contaminant Level
 RL: Reporting Limit
 LSPC: result less than lower specification
 USPC: result greater than upper specification
 TIE: Tentatively Identified or Estimated
 VIOL: Violation (result exceeds MCL)

Laboratory Contacts:

Lab Director: Mark Tolbert 470-524-0577
 Inorganics: Carmen Pyles 470-524-0629
 Metals: Shene Jones 470-524-0544
 Organics: Mary Bowman 470-524-0639
 GC Mass Spec: Ralph Schulz 470-524-0684
 Microbiology: Mary Bowman 470-524-0709

**GEORGIA DEPARTMENT OF NATURAL RESOURCES
ENVIRONMENTAL PROTECTION DIVISION**

5804 Peachtree Corners East, Norcross, GA 30092-3403
(678) 248-7384

LABORATORY REPORT

TO: Ga EPD Air Program EPD Air Prot Ambient Monitoring 4244 International Pkwy Ste 120 Atlanta, GA 30354	Date Collected: 6/10/2022 Time Collected: 0:00 Sample Collector: J. BRYANT Chlorination: Sample Type: Received By: HZ Date Received: 6/21/2022 Time Received: 10:33 AM Project: DATA STUDY Reporting Date: 8/26/2022 Received Temperature: 21.7 °C
Sample ID: AL01120 Facility Name: FULTON F2 Site ID: F2 Location ID: Location Descr:	

ANALYTE	PARAMETER CODE	EPA NOTE	METHOD	RESULT	UNITS	QUALIFIER RL	ANALYSIS		MCL or QC Range
							ANALYST	DATE	
ETO by EPA Method TO-15 QC Batch 197220									
Bromofluorobenzene(Surrogate QC Std.)			EPA TO-15	9.8584	ppbV		KL	6/23/2022	8 to 12
Ethylene Oxide			EPA TO-15	0.1083	ppbV	0.0232	KL	6/23/2022	
ETO Results by EPA Method TO-15									
Bromofluorobenzene(Surrogate QC Std.)			EPA TO-15	70.5173	ug/m3		KL	6/23/2022	57.22 to 85.84
Ethylene Oxide			EPA TO-15	0.1952	ug/m3	0.0418	KL	6/23/2022	

COMMENTS: \$ETO received in the lab at 7.5 in Hg.

ug/L: micrograms/liter
 mg/L: milligrams/liter
 mg/kg: milligrams/kilogram
 ug/kg: micrograms/kilogram
 ug/g: micrograms/gram
 ppm: parts per million
 ppb: parts per billion
 org/L: organisms/liter

<: less than
 MCL: Maximum Contaminant Level
 RL: Reporting Limit
 LSPC: result less than lower specification
 USPC: result greater than upper specification
 TIE: Tentatively Identified or Estimated
 VIOL: Violation (result exceeds MCL)

Laboratory Contacts:

Lab Director: Mark Tolbert 470-524-0577
 Inorganics: Carmen Pyles 470-524-0629
 Metals: Shene Jones 470-524-0544
 Organics: Mary Bowman 470-524-0639
 GC Mass Spec: Ralph Schulz 470-524-0684
 Microbiology: Mary Bowman 470-524-0709

**GEORGIA DEPARTMENT OF NATURAL RESOURCES
ENVIRONMENTAL PROTECTION DIVISION**

5804 Peachtree Corners East, Norcross, GA 30092-3403
(678) 248-7384

LABORATORY REPORT

TO: Ga EPD Air Program EPD Air Prot Ambient Monitoring 4244 International Pkwy Ste 120 Atlanta, GA 30354	Date Collected: 6/10/2022 Time Collected: 0:00 Sample Collector: C. KNOX Chlorination: Sample Type: Received By: HZ
Sample ID: AL01121 Facility Name: douglas - general coffee Site ID: 013-069-0002 Location ID: Location Descr:	Date Received: 6/17/2022 Time Received: 2:01 PM Project: DATA STUDY Reporting Date: 8/26/2022 Received Temperature: 24.4 °C

ANALYTE	PARAMETER CODE	EPA NOTE	METHOD	RESULT	UNITS	QUALIFIER RL	ANALYSIS		MCL or QC Range
							ANALYST	DATE	
ETO by EPA Method TO-15 QC Batch 197220									
Bromofluorobenzene(Surrogate QC Std.)			EPA TO-15	9.9146	ppbV		KL	6/23/2022	8 to 12
Ethylene Oxide			EPA TO-15	0.0687	ppbV	SQ	0.0232	KL	6/23/2022
ETO Results by EPA Method TO-15									
Bromofluorobenzene(Surrogate QC Std.)			EPA TO-15	70.9192	ug/m3		KL	6/23/2022	57.22 to 85.84
Ethylene Oxide			EPA TO-15	0.1238	ug/m3	SQ	0.0418	KL	6/23/2022

COMMENTS: \$ETO received in the lab at 21.8 psi.

ug/L: micrograms/liter
 mg/L: milligrams/liter
 mg/kg: milligrams/kilogram
 ug/kg: micrograms/kilogram
 ug/g: micrograms/gram
 ppm: parts per million
 ppb: parts per billion
 org/L: organisms/liter

<: less than
 MCL: Maximum Contaminant Level
 RL: Reporting Limit
 LSPC: result less than lower specification
 USPC: result greater than upper specification
 TIE: Tentatively Identified or Estimated
 VIOL: Violation (result exceeds MCL)

Laboratory Contacts:

Lab Director: Mark Tolbert 470-524-0577
 Inorganics: Carmen Pyles 470-524-0629
 Metals: Shene Jones 470-524-0544
 Organics: Mary Bowman 470-524-0639
 GC Mass Spec: Ralph Schulz 470-524-0684
 Microbiology: Mary Bowman 470-524-0709

**GEORGIA DEPARTMENT OF NATURAL RESOURCES
ENVIRONMENTAL PROTECTION DIVISION**

5804 Peachtree Corners East, Norcross, GA 30092-3403
(678) 248-7384

LABORATORY REPORT

TO: Ga EPD Air Program EPD Air Prot Ambient Monitoring 4244 International Pkwy Ste 120 Atlanta, GA 30354	Date Collected: 6/10/2022 Time Collected: 0:00 Sample Collector: J. BRYANT Chlorination: Sample Type: Received By: HZ Date Received: 6/21/2022 Time Received: 10:33 AM Project: DATA STUDY Reporting Date: 8/26/2022 Received Temperature: 21.4 °C
Sample ID: AL01122 Facility Name: COVINGTON C2-QA Site ID: C2-QA Location ID: Location Descr:	

ANALYTE	PARAMETER CODE	EPA NOTE	METHOD	RESULT	UNITS	QUALIFIER RL	ANALYSIS		MCL or QC Range
							ANALYST	DATE	
ETO by EPA Method TO-15 QC Batch 197220									
Bromofluorobenzene(Surrogate QC Std.)			EPA TO-15	10.3787	ppbV		KL	6/23/2022	8 to 12
Ethylene Oxide			EPA TO-15	0.0605	ppbV	SQ	0.0232	KL	6/23/2022
ETO Results by EPA Method TO-15									
Bromofluorobenzene(Surrogate QC Std.)			EPA TO-15	74.239	ug/m3		KL	6/23/2022	57.22 to 85.84
Ethylene Oxide			EPA TO-15	0.1091	ug/m3	SQ	0.0418	KL	6/23/2022

COMMENTS: \$ETO received in the lab at 5 in Hg.

ug/L: micrograms/liter
 mg/L: milligrams/liter
 mg/kg: milligrams/kilogram
 ug/kg: micrograms/kilogram
 ug/g: micrograms/gram
 ppm: parts per million
 ppb: parts per billion
 org/L: organisms/liter

<: less than
 MCL: Maximum Contaminant Level
 RL: Reporting Limit
 LSPC: result less than lower specification
 USPC: result greater than upper specification
 TIE: Tentatively Identified or Estimated
 VIOL: Violation (result exceeds MCL)

Laboratory Contacts:

Lab Director: Mark Tolbert 470-524-0577
 Inorganics: Carmen Pyles 470-524-0629
 Metals: Shene Jones 470-524-0544
 Organics: Mary Bowman 470-524-0639
 GC Mass Spec: Ralph Schulz 470-524-0684
 Microbiology: Mary Bowman 470-524-0709

**GEORGIA DEPARTMENT OF NATURAL RESOURCES
ENVIRONMENTAL PROTECTION DIVISION**

5804 Peachtree Corners East, Norcross, GA 30092-3403
(678) 248-7384

LABORATORY REPORT

TO: Ga EPD Air Program EPD Air Prot Ambient Monitoring 4244 International Pkwy Ste 120 Atlanta, GA 30354	Date Collected: 6/10/2022 Time Collected: 0:00 Sample Collector: H. STREET Canister Number: 114320 Canister Cleaned: 5/16/2022 Received By: HZ Date Received: 6/14/2022 Time Received: 10:26 AM Project: AIR Reporting Date: 8/26/2022 Received Temperature: 24.4 °C
Sample ID: AL01123 Facility Name: SOUTH DEKALB Site ID: 013-089-0002 Location ID: QCCAN Location Descr:	

ANALYTE	PARAMETER CODE	EPA NOTE	METHOD	RESULT	UNITS	QUALIFIER RL	ANALYSIS		MCL or QC Range
							ANALYST	DATE	
ETO by EPA Method TO-15 QC Batch 197082									
Bromofluorobenzene(Surrogate QC Std.)		EPA TO-15		9.6745	ppbV		KL	6/16/2022	8 to 12
Ethylene Oxide		EPA TO-15		0.1040	ppbV	0.0232	KL	6/16/2022	
ETO Results by EPA Method TO-15									
Bromofluorobenzene(Surrogate QC Std.)		EPA TO-15		69.2018	ug/m3		KL	6/16/2022	57.22 to 85.84
Ethylene Oxide		EPA TO-15		0.1875	ug/m3	0.0418	KL	6/16/2022	

COMMENTS: \$ETO received in the lab at 4.8 psi.

ug/L: micrograms/liter
 mg/L: milligrams/liter
 mg/kg: milligrams/kilogram
 ug/kg: micrograms/kilogram
 ug/g: micrograms/gram
 ppm: parts per million
 ppb: parts per billion
 org/L: organisms/liter

<: less than
 MCL: Maximum Contaminant Level
 RL: Reporting Limit
 LSPC: result less than lower specification
 USPC: result greater than upper specification
 TIE: Tentatively Identified or Estimated
 VIOL: Violation (result exceeds MCL)

Laboratory Contacts:

Lab Director: Mark Tolbert 470-524-0577
 Inorganics: Carmen Pyles 470-524-0629
 Metals: Shene Jones 470-524-0544
 Organics: Mary Bowman 470-524-0639
 GC Mass Spec: Ralph Schulz 470-524-0684
 Microbiology: Mary Bowman 470-524-0709

**GEORGIA DEPARTMENT OF NATURAL RESOURCES
ENVIRONMENTAL PROTECTION DIVISION**

5804 Peachtree Corners East, Norcross, GA 30092-3403
(678) 248-7384

LABORATORY REPORT

TO: Ga EPD Air Program EPD Air Prot Ambient Monitoring 4244 International Pkwy Ste 120 Atlanta, GA 30354	Date Collected: 6/10/2022 Time Collected: 0:00 Sample Collector: H. STREET Canister Number: 114322 Canister Cleaned: 5/16/2022 Received By: HZ Date Received: 6/14/2022 Time Received: 10:26 AM Project: AIR Reporting Date: 8/26/2022 Received Temperature: 24.4 °C
Sample ID: AL01129 Facility Name: SOUTH DEKALB QA Site ID: 013-089-0002 Location ID: Location Descr:	

ANALYTE	PARAMETER CODE	EPA NOTE	METHOD	RESULT	UNITS	QUALIFIER RL	ANALYSIS		MCL or QC Range
							ANALYST	DATE	
ETO by EPA Method TO-15 QC Batch 197082									
Bromofluorobenzene(Surrogate QC Std.)		EPA TO-15		9.8634	ppbV		KL	6/16/2022	8 to 12
Ethylene Oxide		EPA TO-15		0.0786	ppbV	0.0232	KL	6/16/2022	
ETO Results by EPA Method TO-15									
Bromofluorobenzene(Surrogate QC Std.)		EPA TO-15		70.553	ug/m3		KL	6/16/2022	57.22 to 85.84
Ethylene Oxide		EPA TO-15		0.1417	ug/m3	0.0418	KL	6/16/2022	
ETO NATTS QA Replicate Precision									
Ethylene Oxide		EPA TO-15		13.5	%RPD		KL	6/17/2022	25
ETO QA Replicate Result									
Bromofluorobenzene(Surrogate QC Std.)		EPA TO-15		9.8614	ppbV		KL	6/16/2022	8 to 12
Ethylene Oxide		EPA TO-15		0.0900	ppbV		KL	6/16/2022	

COMMENTS: \$ETO received in the lab at 5.4 psi.

ug/L: micrograms/liter
 mg/L: milligrams/liter
 mg/kg: milligrams/kilogram
 ug/kg: micrograms/kilogram
 ug/g: micrograms/gram
 ppm: parts per million
 ppb: parts per billion
 org/L: organisms/liter

<: less than
 MCL: Maximum Contaminant Level
 RL: Reporting Limit
 LSPC: result less than lower specification
 USPC: result greater than upper specification
 TIE: Tentatively Identified or Estimated
 VIOL: Violation (result exceeds MCL)

Laboratory Contacts:

Lab Director: Mark Tolbert 470-524-0577
 Inorganics: Carmen Pyles 470-524-0629
 Metals: Shene Jones 470-524-0544
 Organics: Mary Bowman 470-524-0639
 GC Mass Spec: Ralph Schulz 470-524-0684
 Microbiology: Mary Bowman 470-524-0709

**GEORGIA DEPARTMENT OF NATURAL RESOURCES
ENVIRONMENTAL PROTECTION DIVISION**

5804 Peachtree Corners East, Norcross, GA 30092-3403
(678) 248-7384

LABORATORY REPORT

TO: Ga EPD Air Program EPD Air Prot Ambient Monitoring 4244 International Pkwy Ste 120 Atlanta, GA 30354	Date Collected: 6/16/2022 Time Collected: 0:00 Sample Collector: H. STREET Canister Number: 111215 Canister Cleaned: 5/31/2022 Received By: KL Date Received: 6/21/2022 Time Received: 10:33 AM Project: AIR Reporting Date: 8/26/2022 Received Temperature: 21.9 °C
Sample ID: AL02171 Facility Name: SOUTH DEKALB Site ID: 013-089-0002 Location ID: QCCAN Location Descr:	

ANALYTE	PARAMETER CODE	EPA NOTE	METHOD	RESULT	UNITS	QUALIFIER RL	ANALYSIS		MCL or QC Range
							ANALYST	DATE	
ETO by EPA Method TO-15 QC Batch 197220									
Bromofluorobenzene(Surrogate QC Std.)			EPA TO-15	9.8513	ppbV		KL	6/23/2022	8 to 12
Ethylene Oxide			EPA TO-15	0.1200	ppbV	0.0232	KL	6/23/2022	
ETO Results by EPA Method TO-15									
Bromofluorobenzene(Surrogate QC Std.)			EPA TO-15	70.4665	ug/m3		KL	6/23/2022	57.22 to 85.84
Ethylene Oxide			EPA TO-15	0.2163	ug/m3	0.0418	KL	6/23/2022	

COMMENTS: \$ETO received in the lab at 5.2 psi.

ug/L: micrograms/liter
 mg/L: milligrams/liter
 mg/kg: milligrams/kilogram
 ug/kg: micrograms/kilogram
 ug/g: micrograms/gram
 ppm: parts per million
 ppb: parts per billion
 org/L: organisms/liter

<: less than
 MCL: Maximum Contaminant Level
 RL: Reporting Limit
 LSPC: result less than lower specification
 USPC: result greater than upper specification
 TIE: Tentatively Identified or Estimated
 VIOL: Violation (result exceeds MCL)

Laboratory Contacts:

Lab Director: Mark Tolbert 470-524-0577
 Inorganics: Carmen Pyles 470-524-0629
 Metals: Shene Jones 470-524-0544
 Organics: Mary Bowman 470-524-0639
 GC Mass Spec: Ralph Schulz 470-524-0684
 Microbiology: Mary Bowman 470-524-0709

**GEORGIA DEPARTMENT OF NATURAL RESOURCES
ENVIRONMENTAL PROTECTION DIVISION**

5804 Peachtree Corners East, Norcross, GA 30092-3403
(678) 248-7384

LABORATORY REPORT

TO: Ga EPD Air Program EPD Air Prot Ambient Monitoring 4244 International Pkwy Ste 120 Atlanta, GA 30354	Date Collected: 6/22/2022 Time Collected: 0:00 Sample Collector: J. BRYANT Chlorination: Sample Type: Received By: KL Date Received: 6/30/2022 Time Received: 9:32 AM Project: DATA STUDY Reporting Date: 8/26/2022 Received Temperature: 24.0 °C
Sample ID: AL02172 Facility Name: COBB S2 Site ID: S2 Location ID: Location Descr:	

ANALYTE	PARAMETER CODE	EPA NOTE	METHOD	RESULT	UNITS	QUALIFIER RL	ANALYSIS		MCL or QC Range
							ANALYST	DATE	
ETO by EPA Method TO-15 QC Batch 197354									
Bromofluorobenzene(Surrogate QC Std.)			EPA TO-15	9.8777	ppbV		KL	7/5/2022	8 to 12
Ethylene Oxide			EPA TO-15	0.1753	ppbV	0.0232	KL	7/5/2022	
ETO Results by EPA Method TO-15									
Bromofluorobenzene(Surrogate QC Std.)			EPA TO-15	70.6553	ug/m3		KL	7/5/2022	57.22 to 85.84
Ethylene Oxide			EPA TO-15	0.316	ug/m3	0.0418	KL	7/5/2022	

COMMENTS: \$ETO received in the lab at 6 in Hg.

ug/L: micrograms/liter
 mg/L: milligrams/liter
 mg/kg: milligrams/kilogram
 ug/kg: micrograms/kilogram
 ug/g: micrograms/gram
 ppm: parts per million
 ppb: parts per billion
 org/L: organisms/liter

<: less than
 MCL: Maximum Contaminant Level
 RL: Reporting Limit
 LSPC: result less than lower specification
 USPC: result greater than upper specification
 TIE: Tentatively Identified or Estimated
 VIOL: Violation (result exceeds MCL)

Laboratory Contacts:

Lab Director: Mark Tolbert 470-524-0577
 Inorganics: Carmen Pyles 470-524-0629
 Metals: Shene Jones 470-524-0544
 Organics: Mary Bowman 470-524-0639
 GC Mass Spec: Ralph Schulz 470-524-0684
 Microbiology: Mary Bowman 470-524-0709

**GEORGIA DEPARTMENT OF NATURAL RESOURCES
ENVIRONMENTAL PROTECTION DIVISION**

5804 Peachtree Corners East, Norcross, GA 30092-3403
(678) 248-7384

LABORATORY REPORT

TO: Ga EPD Air Program EPD Air Prot Ambient Monitoring 4244 International Pkwy Ste 120 Atlanta, GA 30354	Date Collected: 6/22/2022 Time Collected: 0:00 Sample Collector: J. BRYANT Chlorination: Sample Type: Received By: KL Date Received: 6/30/2022 Time Received: 9:32 AM Project: DATA STUDY Reporting Date: 8/26/2022 Received Temperature: 24.1 °C
Sample ID: AL02173 Facility Name: COVINGTON C2 Site ID: C2 Location ID: Location Descr:	

ANALYTE	PARAMETER CODE	EPA NOTE	METHOD	RESULT	UNITS	QUALIFIER RL	ANALYSIS		MCL or QC Range
							ANALYST	DATE	
ETO by EPA Method TO-15 QC Batch 197354									
Bromofluorobenzene(Surrogate QC Std.)			EPA TO-15	9.7538	ppbV		KL	7/5/2022	8 to 12
Ethylene Oxide			EPA TO-15	0.1563	ppbV	0.0232	KL	7/5/2022	
ETO Results by EPA Method TO-15									
Bromofluorobenzene(Surrogate QC Std.)			EPA TO-15	69.769	ug/m3		KL	7/5/2022	57.22 to 85.84
Ethylene Oxide			EPA TO-15	0.2817	ug/m3	0.0418	KL	7/5/2022	

COMMENTS: \$ETO received in the lab at 4.5 in Hg.

ug/L: micrograms/liter
 mg/L: milligrams/liter
 mg/kg: milligrams/kilogram
 ug/kg: micrograms/kilogram
 ug/g: micrograms/gram
 ppm: parts per million
 ppb: parts per billion
 org/L: organisms/liter

<: less than
 MCL: Maximum Contaminant Level
 RL: Reporting Limit
 LSPC: result less than lower specification
 USPC: result greater than upper specification
 TIE: Tentatively Identified or Estimated
 VIOL: Violation (result exceeds MCL)

Laboratory Contacts:

Lab Director: Mark Tolbert 470-524-0577
 Inorganics: Carmen Pyles 470-524-0629
 Metals: Shene Jones 470-524-0544
 Organics: Mary Bowman 470-524-0639
 GC Mass Spec: Ralph Schulz 470-524-0684
 Microbiology: Mary Bowman 470-524-0709

**GEORGIA DEPARTMENT OF NATURAL RESOURCES
ENVIRONMENTAL PROTECTION DIVISION**

5804 Peachtree Corners East, Norcross, GA 30092-3403
(678) 248-7384

LABORATORY REPORT

TO: Ga EPD Air Program EPD Air Prot Ambient Monitoring 4244 International Pkwy Ste 120 Atlanta, GA 30354	Date Collected: 6/22/2022 Time Collected: 0:00 Sample Collector: J. BRYANT Chlorination: Sample Type: Received By: KL Date Received: 6/30/2022 Time Received: 9:32 AM Project: DATA STUDY Reporting Date: 8/26/2022 Received Temperature: 24.0 °C
Sample ID: AL02174 Facility Name: COBB S6-SA Site ID: S6-SA Location ID: Location Descr:	

ANALYTE	PARAMETER CODE	EPA NOTE	METHOD	RESULT	UNITS	QUALIFIER RL	ANALYSIS		MCL or QC Range
							ANALYST	DATE	
ETO by EPA Method TO-15 QC Batch 197354									
Bromofluorobenzene(Surrogate QC Std.)			EPA TO-15	9.9684	ppbV		KL	7/5/2022	8 to 12
Ethylene Oxide			EPA TO-15	0.1031	ppbV	2	0.0232	KL	7/5/2022
ETO Results by EPA Method TO-15									
Bromofluorobenzene(Surrogate QC Std.)			EPA TO-15	71.3041	ug/m3		KL	7/5/2022	57.22 to 85.84
Ethylene Oxide			EPA TO-15	0.1858	ug/m3	2	0.0418	KL	7/5/2022

COMMENTS: \$ETO received in the lab at 3.5 in Hg. Pressure difference of >3 in Hg between receipt from field and receipt in lab.

ug/L: micrograms/liter
 mg/L: milligrams/liter
 mg/kg: milligrams/kilogram
 ug/kg: micrograms/kilogram
 ug/g: micrograms/gram
 ppm: parts per million
 ppb: parts per billion
 org/L: organisms/liter

<: less than
 MCL: Maximum Contaminant Level
 RL: Reporting Limit
 LSPC: result less than lower specification
 USPC: result greater than upper specification
 TIE: Tentatively Identified or Estimated
 VIOL: Violation (result exceeds MCL)

Laboratory Contacts:

Lab Director: Mark Tolbert 470-524-0577
 Inorganics: Carmen Pyles 470-524-0629
 Metals: Shene Jones 470-524-0544
 Organics: Mary Bowman 470-524-0639
 GC Mass Spec: Ralph Schulz 470-524-0684
 Microbiology: Mary Bowman 470-524-0709

**GEORGIA DEPARTMENT OF NATURAL RESOURCES
ENVIRONMENTAL PROTECTION DIVISION**

5804 Peachtree Corners East, Norcross, GA 30092-3403
(678) 248-7384

LABORATORY REPORT

TO: Ga EPD Air Program EPD Air Prot Ambient Monitoring 4244 International Pkwy Ste 120 Atlanta, GA 30354	Date Collected: 6/21/2022 Time Collected: 0:00 Sample Collector: J. BRYANT Chlorination: Sample Type: T Received By: KL Date Received: 6/30/2022 Time Received: 9:32 AM Project: DATA STUDY Reporting Date: 8/26/2022 Received Temperature: 24.5 °C
Sample ID: AL02175 Facility Name: COVINGTON C2, C3-SA FB Site ID: C2 Location ID: Location Descr:	

ANALYTE	PARAMETER CODE	EPA NOTE	METHOD	RESULT	UNITS	QUALIFIER RL	ANALYSIS		MCL or QC Range
							ANALYST	DATE	
ETO by EPA Method TO-15 QC Batch 197405									
Bromofluorobenzene(Surrogate QC Std.)		EPA TO-15		10.3740	ppbV		KL	7/7/2022	8 to 12
Ethylene Oxide		EPA TO-15		0	ppbV	ND 0.0232	KL	7/7/2022	
ETO Results by EPA Method TO-15									
Bromofluorobenzene(Surrogate QC Std.)		EPA TO-15		74.2053	ug/m3		KL	7/7/2022	57.22 to 85.84
Ethylene Oxide		EPA TO-15		0	ug/m3	ND 0.0418	KL	7/7/2022	

COMMENTS: \$ETO received in the lab at 29 in Hg.

ug/L: micrograms/liter
 mg/L: milligrams/liter
 mg/kg: milligrams/kilogram
 ug/kg: micrograms/kilogram
 ug/g: micrograms/gram
 ppm: parts per million
 ppb: parts per billion
 org/L: organisms/liter

<: less than
 MCL: Maximum Contaminant Level
 RL: Reporting Limit
 LSPC: result less than lower specification
 USPC: result greater than upper specification
 TIE: Tentatively Identified or Estimated
 VIOL: Violation (result exceeds MCL)

Laboratory Contacts:

Lab Director: Mark Tolbert 470-524-0577
 Inorganics: Carmen Pyles 470-524-0629
 Metals: Shene Jones 470-524-0544
 Organics: Mary Bowman 470-524-0639
 GC Mass Spec: Ralph Schulz 470-524-0684
 Microbiology: Mary Bowman 470-524-0709

**GEORGIA DEPARTMENT OF NATURAL RESOURCES
ENVIRONMENTAL PROTECTION DIVISION**

5804 Peachtree Corners East, Norcross, GA 30092-3403
(678) 248-7384

LABORATORY REPORT

TO: Ga EPD Air Program EPD Air Prot Ambient Monitoring 4244 International Pkwy Ste 120 Atlanta, GA 30354	Date Collected: 6/22/2022 Time Collected: 0:00 Sample Collector: J. BRYANT Chlorination: Sample Type: Received By: KL Date Received: 6/30/2022 Time Received: 9:32 AM Project: DATA STUDY Reporting Date: 8/26/2022 Received Temperature: 24.1 °C
Sample ID: AL02176 Facility Name: COVINGTON C3-SA Site ID: C3-SA Location ID: Location Descr:	

ANALYTE	PARAMETER CODE	EPA NOTE	METHOD	RESULT	UNITS	QUALIFIER RL	ANALYSIS		MCL or QC Range
							ANALYST	DATE	
ETO by EPA Method TO-15 QC Batch 197354									
Bromofluorobenzene(Surrogate QC Std.)			EPA TO-15	9.7704	ppbV		KL	7/5/2022	8 to 12
Ethylene Oxide			EPA TO-15	0.1774	ppbV	0.0232	KL	7/5/2022	
ETO Results by EPA Method TO-15									
Bromofluorobenzene(Surrogate QC Std.)			EPA TO-15	69.8878	ug/m3		KL	7/5/2022	57.22 to 85.84
Ethylene Oxide			EPA TO-15	0.3198	ug/m3	0.0418	KL	7/5/2022	

COMMENTS: \$ETO received in the lab at 8 in Hg.

ug/L: micrograms/liter
 mg/L: milligrams/liter
 mg/kg: milligrams/kilogram
 ug/kg: micrograms/kilogram
 ug/g: micrograms/gram
 ppm: parts per million
 ppb: parts per billion
 org/L: organisms/liter

<: less than
 MCL: Maximum Contaminant Level
 RL: Reporting Limit
 LSPC: result less than lower specification
 USPC: result greater than upper specification
 TIE: Tentatively Identified or Estimated
 VIOL: Violation (result exceeds MCL)

Laboratory Contacts:

Lab Director: Mark Tolbert 470-524-0577
 Inorganics: Carmen Pyles 470-524-0629
 Metals: Shene Jones 470-524-0544
 Organics: Mary Bowman 470-524-0639
 GC Mass Spec: Ralph Schulz 470-524-0684
 Microbiology: Mary Bowman 470-524-0709

**GEORGIA DEPARTMENT OF NATURAL RESOURCES
ENVIRONMENTAL PROTECTION DIVISION**

5804 Peachtree Corners East, Norcross, GA 30092-3403
(678) 248-7384

LABORATORY REPORT

TO: Ga EPD Air Program EPD Air Prot Ambient Monitoring 4244 International Pkwy Ste 120 Atlanta, GA 30354	Date Collected: 6/21/2022 Time Collected: 0:00 Sample Collector: J. BRYANT Chlorination: Sample Type: T Received By: KL
	Date Received: 6/30/2022 Time Received: 9:32 AM Project: DATA STUDY Reporting Date: 8/26/2022 Received Temperature: 24.3 °C
Sample ID: AL02177 Facility Name: COBB S2, S6-SA, S7-SA FB Site ID: S2 Location ID: Location Descr:	

ANALYTE	PARAMETER CODE	EPA NOTE	METHOD	RESULT	UNITS	QUALIFIER RL	ANALYSIS		MCL or QC Range
							ANALYST	DATE	
ETO by EPA Method TO-15 QC Batch 197405									
Bromofluorobenzene(Surrogate QC Std.)			EPA TO-15	10.2610	ppbV		KL	7/7/2022	8 to 12
Ethylene Oxide			EPA TO-15	0	ppbV	ND	0.0232	KL	7/7/2022
ETO Results by EPA Method TO-15									
Bromofluorobenzene(Surrogate QC Std.)			EPA TO-15	73.3971	ug/m3		KL	7/7/2022	57.22 to 85.84
Ethylene Oxide			EPA TO-15	0	ug/m3	ND	0.0418	KL	7/7/2022

COMMENTS: \$ETO received in the lab at 29 in Hg.

ug/L: micrograms/liter
 mg/L: milligrams/liter
 mg/kg: milligrams/kilogram
 ug/kg: micrograms/kilogram
 ug/g: micrograms/gram
 ppm: parts per million
 ppb: parts per billion
 org/L: organisms/liter

<: less than
 MCL: Maximum Contaminant Level
 RL: Reporting Limit
 LSPC: result less than lower specification
 USPC: result greater than upper specification
 TIE: Tentatively Identified or Estimated
 VIOL: Violation (result exceeds MCL)

Laboratory Contacts:

Lab Director: Mark Tolbert 470-524-0577
 Inorganics: Carmen Pyles 470-524-0629
 Metals: Shene Jones 470-524-0544
 Organics: Mary Bowman 470-524-0639
 GC Mass Spec: Ralph Schulz 470-524-0684
 Microbiology: Mary Bowman 470-524-0709

**GEORGIA DEPARTMENT OF NATURAL RESOURCES
ENVIRONMENTAL PROTECTION DIVISION**

5804 Peachtree Corners East, Norcross, GA 30092-3403
(678) 248-7384

LABORATORY REPORT

TO: Ga EPD Air Program EPD Air Prot Ambient Monitoring 4244 International Pkwy Ste 120 Atlanta, GA 30354	Date Collected: 6/22/2022 Time Collected: 0:00 Sample Collector: J. BRYANT Chlorination: Sample Type: Received By: KL Date Received: 6/30/2022 Time Received: 9:32 AM Project: DATA DTUDY Reporting Date: 8/26/2022 Received Temperature: 24.7 °C
Sample ID: AL02178 Facility Name: FULTON F2 Site ID: F2 Location ID: Location Descr:	

ANALYTE	PARAMETER CODE	EPA NOTE	METHOD	RESULT	UNITS	QUALIFIER RL	ANALYSIS		MCL or QC Range
							ANALYST	DATE	
ETO by EPA Method TO-15 QC Batch 197354									
Bromofluorobenzene(Surrogate QC Std.)			EPA TO-15	9.7272	ppbV		KL	7/5/2022	8 to 12
Ethylene Oxide			EPA TO-15	0.2634	ppbV	0.0232	KL	7/5/2022	
ETO Results by EPA Method TO-15									
Bromofluorobenzene(Surrogate QC Std.)			EPA TO-15	69.5788	ug/m3		KL	7/5/2022	57.22 to 85.84
Ethylene Oxide			EPA TO-15	0.4748	ug/m3	0.0418	KL	7/5/2022	

COMMENTS: \$ETO received in the lab at 5 in Hg.

ug/L: micrograms/liter
 mg/L: milligrams/liter
 mg/kg: milligrams/kilogram
 ug/kg: micrograms/kilogram
 ug/g: micrograms/gram
 ppm: parts per million
 ppb: parts per billion
 org/L: organisms/liter

<: less than
 MCL: Maximum Contaminant Level
 RL: Reporting Limit
 LSPC: result less than lower specification
 USPC: result greater than upper specification
 TIE: Tentatively Identified or Estimated
 VIOL: Violation (result exceeds MCL)

Laboratory Contacts:

Lab Director: Mark Tolbert 470-524-0577
 Inorganics: Carmen Pyles 470-524-0629
 Metals: Shene Jones 470-524-0544
 Organics: Mary Bowman 470-524-0639
 GC Mass Spec: Ralph Schulz 470-524-0684
 Microbiology: Mary Bowman 470-524-0709

**GEORGIA DEPARTMENT OF NATURAL RESOURCES
ENVIRONMENTAL PROTECTION DIVISION**

5804 Peachtree Corners East, Norcross, GA 30092-3403
(678) 248-7384

LABORATORY REPORT

TO: Ga EPD Air Program EPD Air Prot Ambient Monitoring 4244 International Pkwy Ste 120 Atlanta, GA 30354	Date Collected: 6/22/2022 Time Collected: 0:00 Sample Collector: J. BRYANT Chlorination: Sample Type: Received By: KL Date Received: 6/30/2022 Time Received: 9:32 AM Project: DATA STUDY Reporting Date: 8/26/2022 Received Temperature: 24.7 °C
Sample ID: AL02179 Facility Name: COBB S7-SA Site ID: S7-SA Location ID: QCCAN Location Descr:	

ANALYTE	PARAMETER CODE	EPA NOTE	METHOD	RESULT	UNITS	QUALIFIER RL	ANALYSIS		MCL or QC Range
							ANALYST	DATE	
ETO by EPA Method TO-15 QC Batch 197354									
Bromofluorobenzene(Surrogate QC Std.)			EPA TO-15	9.8128	ppbV		KL	7/5/2022	8 to 12
Ethylene Oxide			EPA TO-15	0.1020	ppbV	0.0232	KL	7/5/2022	
ETO Results by EPA Method TO-15									
Bromofluorobenzene(Surrogate QC Std.)			EPA TO-15	70.1911	ug/m3		KL	7/5/2022	57.22 to 85.84
Ethylene Oxide			EPA TO-15	0.1839	ug/m3	0.0418	KL	7/5/2022	

COMMENTS: \$ETO received in the lab at 6 in Hg.

ug/L: micrograms/liter
 mg/L: milligrams/liter
 mg/kg: milligrams/kilogram
 ug/kg: micrograms/kilogram
 ug/g: micrograms/gram
 ppm: parts per million
 ppb: parts per billion
 org/L: organisms/liter

<: less than
 MCL: Maximum Contaminant Level
 RL: Reporting Limit
 LSPC: result less than lower specification
 USPC: result greater than upper specification
 TIE: Tentatively Identified or Estimated
 VIOL: Violation (result exceeds MCL)

Laboratory Contacts:

Lab Director: Mark Tolbert 470-524-0577
 Inorganics: Carmen Pyles 470-524-0629
 Metals: Shene Jones 470-524-0544
 Organics: Mary Bowman 470-524-0639
 GC Mass Spec: Ralph Schulz 470-524-0684
 Microbiology: Mary Bowman 470-524-0709

**GEORGIA DEPARTMENT OF NATURAL RESOURCES
ENVIRONMENTAL PROTECTION DIVISION**

5804 Peachtree Corners East, Norcross, GA 30092-3403
(678) 248-7384

LABORATORY REPORT

TO: Ga EPD Air Program EPD Air Prot Ambient Monitoring 4244 International Pkwy Ste 120 Atlanta, GA 30354	Date Collected: 6/22/2022 Time Collected: 0:00 Sample Collector: J. BRYANT Chlorination: Sample Type: Received By: KL Date Received: 6/30/2022 Time Received: 9:32 AM Project: DATA STUDY Reporting Date: 8/26/2022 Received Temperature: 24.1 °C
Sample ID: AL02180 Facility Name: FULTON F1-SA Site ID: F1-SA Location ID: Location Descr:	

ANALYTE	PARAMETER CODE	EPA NOTE	METHOD	RESULT	UNITS	QUALIFIER RL	ANALYSIS		MCL or QC Range
							ANALYST	DATE	
ETO by EPA Method TO-15 QC Batch 197354									
Bromofluorobenzene(Surrogate QC Std.)			EPA TO-15	9.7835	ppbV		KL	7/5/2022	8 to 12
Ethylene Oxide			EPA TO-15	0.1587	ppbV	0.0232	KL	7/5/2022	
ETO Results by EPA Method TO-15									
Bromofluorobenzene(Surrogate QC Std.)			EPA TO-15	69.9815	ug/m3		KL	7/5/2022	57.22 to 85.84
Ethylene Oxide			EPA TO-15	0.2861	ug/m3	0.0418	KL	7/5/2022	

COMMENTS: \$ETO received in the lab at 5.5 in Hg.

ug/L: micrograms/liter
 mg/L: milligrams/liter
 mg/kg: milligrams/kilogram
 ug/kg: micrograms/kilogram
 ug/g: micrograms/gram
 ppm: parts per million
 ppb: parts per billion
 org/L: organisms/liter

<: less than
 MCL: Maximum Contaminant Level
 RL: Reporting Limit
 LSPC: result less than lower specification
 USPC: result greater than upper specification
 TIE: Tentatively Identified or Estimated
 VIOL: Violation (result exceeds MCL)

Laboratory Contacts:

Lab Director: Mark Tolbert 470-524-0577
 Inorganics: Carmen Pyles 470-524-0629
 Metals: Shene Jones 470-524-0544
 Organics: Mary Bowman 470-524-0639
 GC Mass Spec: Ralph Schulz 470-524-0684
 Microbiology: Mary Bowman 470-524-0709

**GEORGIA DEPARTMENT OF NATURAL RESOURCES
ENVIRONMENTAL PROTECTION DIVISION**

5804 Peachtree Corners East, Norcross, GA 30092-3403
(678) 248-7384

LABORATORY REPORT

TO: Ga EPD Air Program EPD Air Prot Ambient Monitoring 4244 International Pkwy Ste 120 Atlanta, GA 30354	Date Collected: 6/28/2022 Time Collected: 0:00 Sample Collector: J. BRYANT Canister Number: 114375 Canister Cleaned: 5/31/2022 Received By: KL
	Date Received: 6/30/2022 Time Received: 9:32 AM Project: AIR Reporting Date: 8/26/2022 Received Temperature: 24.2 °C
Sample ID: AL02181 Facility Name: SOUTH DEKALB Site ID: 013-089-0002 Location ID: Location Descr:	

ANALYTE	PARAMETER CODE	EPA NOTE	METHOD	RESULT	UNITS	QUALIFIER RL	ANALYSIS		MCL or QC Range
							ANALYST	DATE	
ETO by EPA Method TO-15 QC Batch 197405									
Bromofluorobenzene(Surrogate QC Std.)			EPA TO-15	9.8298	ppbV		KL	7/7/2022	8 to 12
Ethylene Oxide			EPA TO-15	0.1327	ppbV	0.0232	KL	7/7/2022	
ETO Results by EPA Method TO-15									
Bromofluorobenzene(Surrogate QC Std.)			EPA TO-15	70.3127	ug/m3		KL	7/7/2022	57.22 to 85.84
Ethylene Oxide			EPA TO-15	0.2392	ug/m3	0.0418	KL	7/7/2022	

COMMENTS: \$ETO received in the lab at 5.4 psi.

ug/L: micrograms/liter
 mg/L: milligrams/liter
 mg/kg: milligrams/kilogram
 ug/kg: micrograms/kilogram
 ug/g: micrograms/gram
 ppm: parts per million
 ppb: parts per billion
 org/L: organisms/liter

<: less than
 MCL: Maximum Contaminant Level
 RL: Reporting Limit
 LSPC: result less than lower specification
 USPC: result greater than upper specification
 TIE: Tentatively Identified or Estimated
 VIOL: Violation (result exceeds MCL)

Laboratory Contacts:

Lab Director: Mark Tolbert 470-524-0577
 Inorganics: Carmen Pyles 470-524-0629
 Metals: Shene Jones 470-524-0544
 Organics: Mary Bowman 470-524-0639
 GC Mass Spec: Ralph Schulz 470-524-0684
 Microbiology: Mary Bowman 470-524-0709

**GEORGIA DEPARTMENT OF NATURAL RESOURCES
ENVIRONMENTAL PROTECTION DIVISION**

5804 Peachtree Corners East, Norcross, GA 30092-3403
(678) 248-7384

LABORATORY REPORT

TO: Ga EPD Air Program EPD Air Prot Ambient Monitoring 4244 International Pkwy Ste 120 Atlanta, GA 30354	Date Collected: 6/22/2022 Time Collected: 0:00 Sample Collector: C KNOX Chlorination: Sample Type: Received By: KL
	Date Received: 7/5/2022 Time Received: 11:52 AM Project: DATA STUDY Reporting Date: 8/26/2022 Received Temperature: 19.9 °C
Sample ID: AL02184 Facility Name: General Coffee Site ID: 013-069-0002 Location ID: Location Descr:	

ANALYTE	PARAMETER CODE	EPA NOTE	METHOD	RESULT	UNITS	QUALIFIER RL	ANALYSIS		MCL or QC Range
							ANALYST	DATE	
ETO by EPA Method TO-15 QC Batch 197405									
Bromofluorobenzene(Surrogate QC Std.)			EPA TO-15	9.5186	ppbV		KL	7/7/2022	8 to 12
Ethylene Oxide			EPA TO-15	0.0919	ppbV	2	0.0232	KL	7/7/2022
ETO Results by EPA Method TO-15									
Bromofluorobenzene(Surrogate QC Std.)			EPA TO-15	68.0867	ug/m3		KL	7/7/2022	57.22 to 85.84
Ethylene Oxide			EPA TO-15	0.1657	ug/m3	2	0.0418	KL	7/7/2022

COMMENTS: \$ETO received in the lab at 20.4 psi. Pressure difference of >0.5 psi between receipt from field and receipt in lab.

ug/L: micrograms/liter
 mg/L: milligrams/liter
 mg/kg: milligrams/kilogram
 ug/kg: micrograms/kilogram
 ug/g: micrograms/gram
 ppm: parts per million
 ppb: parts per billion
 org/L: organisms/liter

<: less than
 MCL: Maximum Contaminant Level
 RL: Reporting Limit
 LSPC: result less than lower specification
 USPC: result greater than upper specification
 TIE: Tentatively Identified or Estimated
 VIOL: Violation (result exceeds MCL)

Laboratory Contacts:

Lab Director: Mark Tolbert 470-524-0577
 Inorganics: Carmen Pyles 470-524-0629
 Metals: Shene Jones 470-524-0544
 Organics: Mary Bowman 470-524-0639
 GC Mass Spec: Ralph Schulz 470-524-0684
 Microbiology: Mary Bowman 470-524-0709

**GEORGIA DEPARTMENT OF NATURAL RESOURCES
ENVIRONMENTAL PROTECTION DIVISION**

5804 Peachtree Corners East, Norcross, GA 30092-3403
(678) 248-7384

LABORATORY REPORT

TO: Ga EPD Air Program EPD Air Prot Ambient Monitoring 4244 International Pkwy Ste 120 Atlanta, GA 30354	Date Collected: 6/21/2022 Time Collected: 0:00 Sample Collector: J. BRYANT Chlorination: Sample Type: T Received By: KL Date Received: 6/30/2022 Time Received: 9:32 AM Project: DATA STUDY Reporting Date: 8/26/2022 Received Temperature: 24.2 °C
Sample ID: AL02185 Facility Name: FULTON F2, F1-SA FB Site ID: F2 Location ID: Location Descr:	

ANALYTE	PARAMETER CODE	EPA NOTE	METHOD	RESULT	UNITS	QUALIFIER RL	ANALYSIS		MCL or QC Range
							ANALYST	DATE	
ETO by EPA Method TO-15 QC Batch 197405									
Bromofluorobenzene(Surrogate QC Std.)			EPA TO-15	10.3723	ppbV		KL	7/7/2022	8 to 12
Ethylene Oxide			EPA TO-15	0	ppbV	ND	0.0232	KL	7/7/2022
ETO Results by EPA Method TO-15									
Bromofluorobenzene(Surrogate QC Std.)			EPA TO-15	74.1932	ug/m3		KL	7/7/2022	57.22 to 85.84
Ethylene Oxide			EPA TO-15	0	ug/m3	ND	0.0418	KL	7/7/2022

COMMENTS: \$ETO received in the lab at 29 in Hg.

ug/L: micrograms/liter
 mg/L: milligrams/liter
 mg/kg: milligrams/kilogram
 ug/kg: micrograms/kilogram
 ug/g: micrograms/gram
 ppm: parts per million
 ppb: parts per billion
 org/L: organisms/liter

<: less than
 MCL: Maximum Contaminant Level
 RL: Reporting Limit
 LSPC: result less than lower specification
 USPC: result greater than upper specification
 TIE: Tentatively Identified or Estimated
 VIOL: Violation (result exceeds MCL)

Laboratory Contacts:

Lab Director: Mark Tolbert 470-524-0577
 Inorganics: Carmen Pyles 470-524-0629
 Metals: Shene Jones 470-524-0544
 Organics: Mary Bowman 470-524-0639
 GC Mass Spec: Ralph Schulz 470-524-0684
 Microbiology: Mary Bowman 470-524-0709

**GEORGIA DEPARTMENT OF NATURAL RESOURCES
ENVIRONMENTAL PROTECTION DIVISION**

5804 Peachtree Corners East, Norcross, GA 30092-3403
(678) 248-7384

LABORATORY REPORT

TO: Ga EPD Air Program EPD Air Prot Ambient Monitoring 4244 International Pkwy Ste 120 Atlanta, GA 30354	Date Collected: 6/22/2022 Time Collected: 0:00 Sample Collector: H. STREET Canister Number: 114311 Canister Cleaned: 5/31/2022 Received By: KL Date Received: 6/24/2022 Time Received: 9:06 AM Project: AIR Reporting Date: 8/26/2022 Received Temperature: 24.9 °C
Sample ID: AL02186 Facility Name: SOUTH DEKALB Site ID: 013-089-0002 Location ID: Location Descr:	

ANALYTE	PARAMETER CODE	EPA NOTE	METHOD	RESULT	UNITS	QUALIFIER RL	ANALYSIS		MCL or QC Range
							ANALYST	DATE	
ETO by EPA Method TO-15 QC Batch 197309									
Bromofluorobenzene(Surrogate QC Std.)			EPA TO-15	10.1599	ppbV		HZ	6/28/2022	8 to 12
Ethylene Oxide			EPA TO-15	0.13	ppbV	0.0232	HZ	6/28/2022	
ETO Results by EPA Method TO-15									
Bromofluorobenzene(Surrogate QC Std.)			EPA TO-15	72.6739	ug/m3		HZ	6/28/2022	57.22 to 85.84
Ethylene Oxide			EPA TO-15	0.2343	ug/m3	0.0418	HZ	6/28/2022	

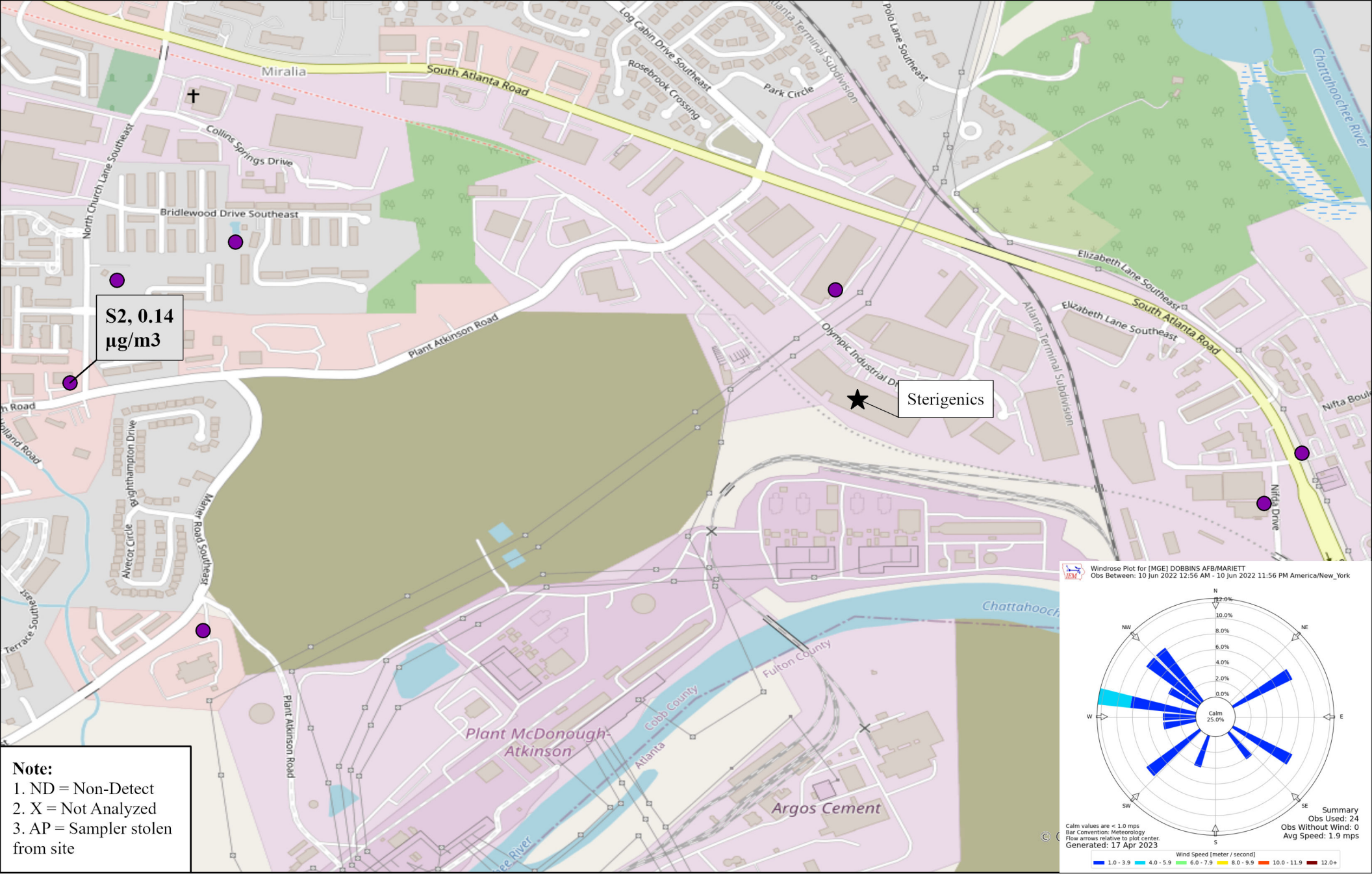
COMMENTS: \$ETO received in the lab at 5.4 psi.

ug/L: micrograms/liter
 mg/L: milligrams/liter
 mg/kg: milligrams/kilogram
 ug/kg: micrograms/kilogram
 ug/g: micrograms/gram
 ppm: parts per million
 ppb: parts per billion
 org/L: organisms/liter

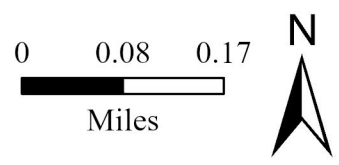
<: less than
 MCL: Maximum Contaminant Level
 RL: Reporting Limit
 LSPC: result less than lower specification
 USPC: result greater than upper specification
 TIE: Tentatively Identified or Estimated
 VIOL: Violation (result exceeds MCL)

Laboratory Contacts:

Lab Director: Mark Tolbert 470-524-0577
 Inorganics: Carmen Pyles 470-524-0629
 Metals: Shene Jones 470-524-0544
 Organics: Mary Bowman 470-524-0639
 GC Mass Spec: Ralph Schulz 470-524-0684
 Microbiology: Mary Bowman 470-524-0709



Note:
 1. ND = Non-Detect
 2. X = Not Analyzed
 3. AP = Sampler stolen from site

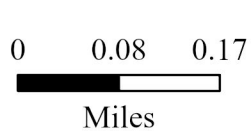
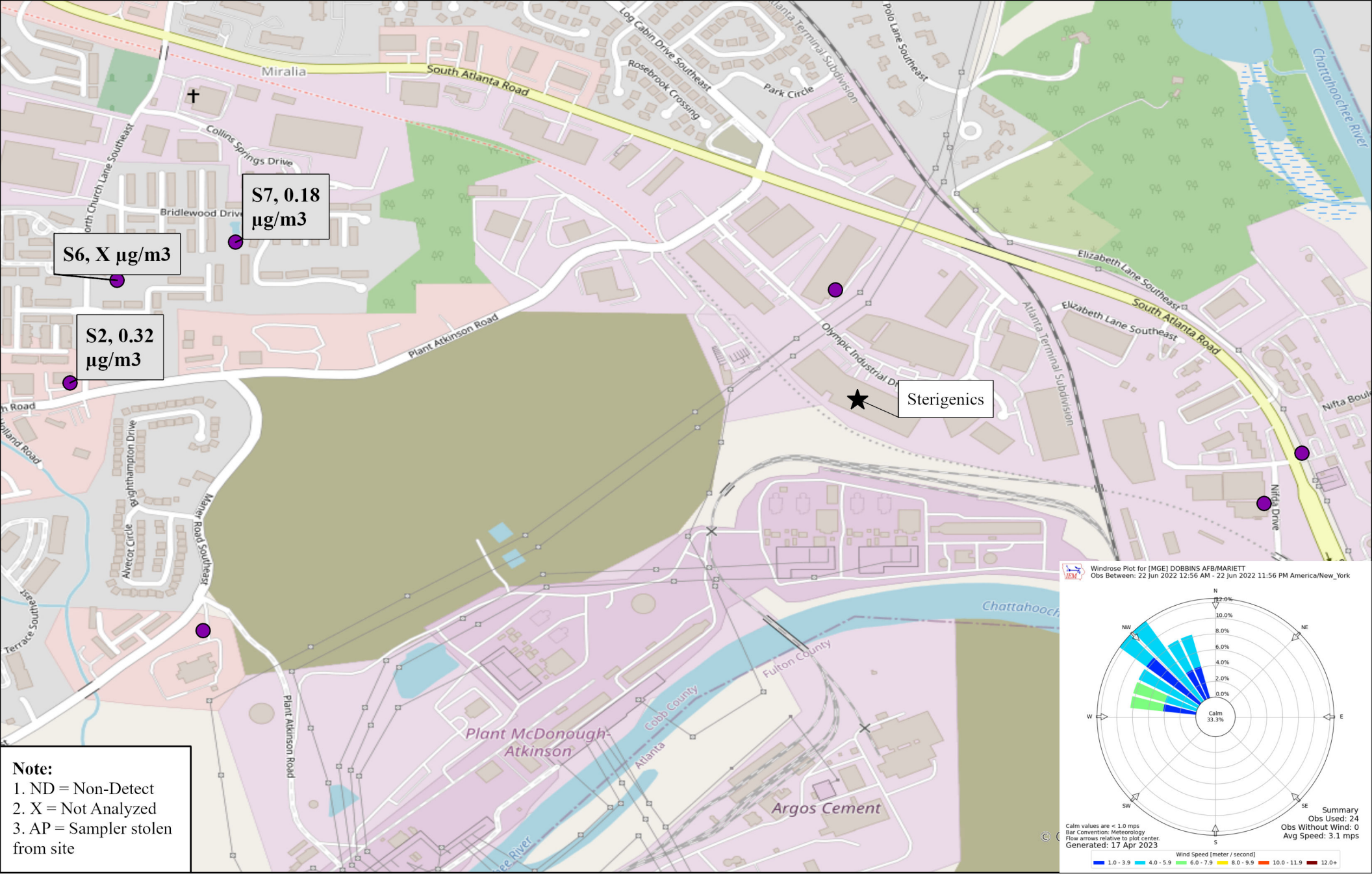


Site ID, Concentration (µg/m3)

Ethylene Oxide Sampling
 Cobb County, GA

06/10/2022
 Sampled By: Georgia Environmental Protection Division
 Analyzed By: Georgia Environmental Protection Division





Site ID, Concentration ($\mu\text{g}/\text{m}^3$)

Ethylene Oxide Sampling
Cobb County, GA

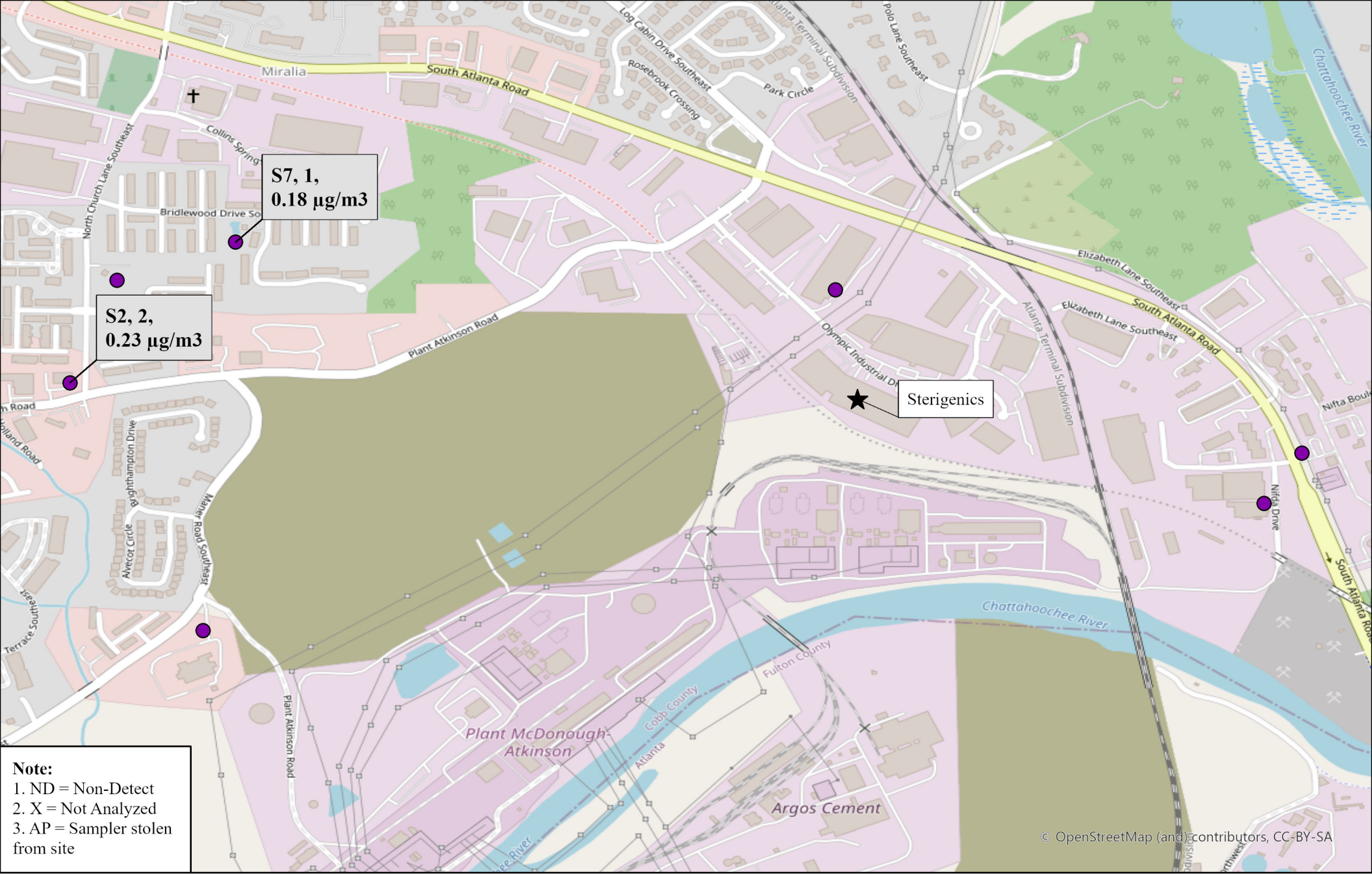
06/22/2022

Sampled By: Georgia Environmental Protection Division
 Analyzed By: Georgia Environmental Protection Division



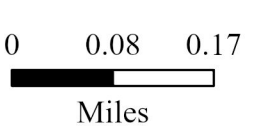
GEORGIA
DEPARTMENT OF NATURAL RESOURCES

ENVIRONMENTAL PROTECTION DIVISION



© OpenStreetMap (and) contributors, CC-BY-SA

Note:
 1. ND = Non-Detect
 2. X = Not Analyzed
 3. AP = Sampler stolen from site



Site ID, Number of Samples, Concentration (µg/m3)

Ethylene Oxide Sampling
 Cobb County, GA

June 2022 Site Average Values
 Note: Not detectable values were included in average calculations as a value of 0.
 Sampled By: Georgia Environmental Protection Division
 Analyzed By: Georgia Environmental Protection Division

