

October 13, 2022

MEMORANDUM

To: Karen Hays, Air Branch Chief *KH*

Through: James Boylan, Assistant Branch Chief

From: DeAnna Oser, Ambient Monitoring Program Manager

RE: Cobb –October 1- 31, 2021, Sampling Results for Ethylene Oxide

Samples of Ethylene Oxide (EtO) were collected during the period of October 1- October 31, 2021, by the Ambient Monitoring Program in the Cobb area to characterize the EtO concentration. Each of the samples were sent to the Georgia Environmental Protection Division Laboratory (EPD) for analysis. The Qualifier code of “2” was given to samples to indicate that the collection deviated from established procedures, but the integrity of the sample was not compromised. The Qualifier code of “3” was given to samples to indicate that integrity of the field data may have been compromised. The Null code of “AF” was given to indicate that the sample was scheduled but not collected on the collection date.

Location		Date		Qualifier		EtO Concentration (ug/m ³)
S2		10/01/2021		2, 3		0.35
S2		10/13/2021		2, 3		0.32
S2		10/25/2021				AF
S2		10/31/2021		2, 3		0.10
S2 QA		10/01/2021		3		0.34
S6 SA		10/13/2021		2		0.36
S7 SA		10/13/2021		2		0.29

If you have any questions, please let me know.

DGO/do

**GEORGIA DEPARTMENT OF NATURAL RESOURCES
ENVIRONMENTAL PROTECTION DIVISION**

5804 Peachtree Corners East, Norcross, GA 30092-3403
(678) 248-7383

LABORATORY REPORT

TO: Ga EPD Air Program EPD Air Prot Ambient Monitoring 4244 International Pkwy Ste 120 Atlanta, GA 30354	Date Collected: 10/1/2021 Time Collected: 0:00 Sample Collector: H. STREET Canister Number: 114377 Canister Cleaned: 9/2/2021 Received By: KL
Sample ID: AK84720 Facility Name: SOUTH DEKALB Site ID: 013-089-0002 Location ID: Location Descr:	Date Received: 10/5/2021 Time Received: 10:47 AM Project: AIR Reporting Date: 12/16/2021 Received Temperature: 24.5 °C

ANALYTE	PARAMETER CODE NOTE	EPA METHOD	RESULT	UNITS	QUALIFIER RL	ANALYSIS ANALYST DATE	MCL or QC Range
ETO by EPA Method TO-15 QC Batch 193070							
Bromofluorobenzene(Surrogate QC Std.)	EPA TO-15	10.6356	ppbV		KL	10/5/2021	8 to 12
Ethylene Oxide	EPA TO-15	0.1643	ppbV	0.016	KL	10/5/2021	
ETO Results by EPA Method TO-15							
Bromofluorobenzene(Surrogate QC Std.)	EPA TO-15	76.0766	ug/m3		KL	10/5/2021	57.22 to 85.84
Ethylene Oxide	EPA TO-15	0.2962	ug/m3	0.0288	KL	10/5/2021	

COMMENTS: \$TEO received in the lab at 5 in Hg.

ug/L: micrograms/liter
 mg/L: milligrams/liter
 mg/kg: milligrams/kilogram
 ug/kg: micrograms/kilogram
 ug/g: micrograms/gram
 ppm: parts per million
 ppb: parts per billion
 org/L: organisms/liter

<: less than
 MCL: Maximum Contaminant Level
 RL: Reporting Limit
 LSPC: result less than lower specification
 USPC: result greater than upper specification
 TIE: Tentatively Identified or Estimated
 VIOL: Violation (result exceeds MCL)

Laboratory Contacts:

Lab Director:	Mark Tolbert	470-524-0577
Inorganics:	Kristy Hrehor	470-524-0689
Metals:	Shene Jones	470-524-0544
Organics:	Mary Bowman	470-524-0639
GC Mass Spec:	Ralph Schulz	470-524-0684
Microbiology:	Mary Bowman	470-524-0709

**GEORGIA DEPARTMENT OF NATURAL RESOURCES
ENVIRONMENTAL PROTECTION DIVISION**

5804 Peachtree Corners East, Norcross, GA 30092-3403
(678) 248-7383

LABORATORY REPORT

TO: Ga EPD Air Program EPD Air Prot Ambient Monitoring 4244 International Pkwy Ste 120 Atlanta, GA 30354	Date Collected: 10/9/2021 Time Collected: 0:00 Sample Collector: H. STREET Canister Number: 110327 Canister Cleaned: 9/27/2021 Received By: KL
	Date Received: 10/12/2021 Time Received: 11:55 AM Project: AIR Reporting Date: 12/16/2021 Received Temperature: 23.5 °C
Sample ID: AK87159 Facility Name: SOUTH DEKALB Site ID: 013-089-0002 Location ID: QCCAN Location Descr:	

ANALYTE	PARAMETER CODE	NOTE	EPA METHOD	RESULT	UNITS	QUALIFIER RL	ANALYSIS ANALYST	DATE	MCL or QC Range
ETO by EPA Method TO-15 QC Batch 193281									
Bromofluorobenzene(Surrogate QC Std.)			EPA TO-15	10.2845	ppbV		KL	10/14/2021	8 to 12
Ethylene Oxide			EPA TO-15	0.1720	ppbV	0.016	KL	10/14/2021	
ETO Results by EPA Method TO-15									
Bromofluorobenzene(Surrogate QC Std.)			EPA TO-15	73.5651	ug/m3		KL	10/14/2021	57.22 to 85.84
Ethylene Oxide			EPA TO-15	0.31	ug/m3	0.0288	KL	10/14/2021	

COMMENTS: \$ETO received in the lab at 4 in Hg. This is an ETO makeup sample for 10-07-2021.

ug/L: micrograms/liter mg/L: milligrams/liter mg/kg: milligrams/kilogram ug/kg: micrograms/kilogram ug/g: micrograms/gram ppm: parts per million ppb: parts per billion org/L: organisms/liter	<: less than MCL: Maximum Contaminant Level RL: Reporting Limit LSPC: result less than lower specification USPC: result greater than upper specification TIE: Tentatively Identified or Estimated VIOL: Violation (result exceeds MCL)	Laboratory Contacts: Lab Director: Mark Tolbert 470-524-0577 Inorganics: Kristy Hrehor 470-524-0689 Metals: Shene Jones 470-524-0544 Organics: Mary Bowman 470-524-0639 GC Mass Spec: Ralph Schulz 470-524-0684 Microbiology: Mary Bowman 470-524-0709
---	--	---

**GEORGIA DEPARTMENT OF NATURAL RESOURCES
ENVIRONMENTAL PROTECTION DIVISION**

5804 Peachtree Corners East, Norcross, GA 30092-3403
(678) 248-7383

LABORATORY REPORT

TO: Ga EPD Air Program EPD Air Prot Ambient Monitoring 4244 International Pkwy Ste 120 Atlanta, GA 30354	Date Collected: 10/21/2021 Time Collected: 0:00 Sample Collector: H. STREET Canister Number: 114320 Canister Cleaned: 9/27/2021 Received By: KL
	Date Received: 10/27/2021 Time Received: 10:02 AM Project: AIR Reporting Date: 12/16/2021 Received Temperature: 17.5 °C
Sample ID: AK87160 Facility Name: SOUTH DEKALB Site ID: 013-089-0002 Location ID: Location Descr:	

ANALYTE	PARAMETER CODE	NOTE	EPA METHOD	RESULT	UNITS	QUALIFIER RL	ANALYSIS ANALYST	DATE	MCL or QC Range
ETO by EPA Method TO-15 QC Batch 193603									
Bromofluorobenzene(Surrogate QC Std.)			EPA TO-15	10.8316	ppbV		KL	11/2/2021	8 to 12
Ethylene Oxide			EPA TO-15	0.2025	ppbV	0.016	KL	11/2/2021	
ETO Results by EPA Method TO-15									
Bromofluorobenzene(Surrogate QC Std.)			EPA TO-15	77.4786	ug/m3		KL	11/2/2021	57.22 to 85.84
Ethylene Oxide			EPA TO-15	0.365	ug/m3	0.0288	KL	11/2/2021	

COMMENTS: \$ETO received in the lab at 3 in Hg. This is an ETO makeup sample for 10/13/2021.

ug/L: micrograms/liter
 mg/L: milligrams/liter
 mg/kg: milligrams/kilogram
 ug/kg: micrograms/kilogram
 ug/g: micrograms/gram
 ppm: parts per million
 ppb: parts per billion
 org/L: organisms/liter

<: less than
 MCL: Maximum Contaminant Level
 RL: Reporting Limit
 LSPC: result less than lower specification
 USPC: result greater than upper specification
 TIE: Tentatively Identified or Estimated
 VIOL: Violation (result exceeds MCL)

Laboratory Contacts:

Lab Director: Mark Tolbert 470-524-0577
 Inorganics: Kristy Hrehor 470-524-0689
 Metals: Shene Jones 470-524-0544
 Organics: Mary Bowman 470-524-0639
 GC Mass Spec: Ralph Schulz 470-524-0684
 Microbiology: Mary Bowman 470-524-0709

**GEORGIA DEPARTMENT OF NATURAL RESOURCES
ENVIRONMENTAL PROTECTION DIVISION**

5804 Peachtree Corners East, Norcross, GA 30092-3403
(678) 248-7383

LABORATORY REPORT

TO: Ga EPD Air Program EPD Air Prot Ambient Monitoring 4244 International Pkwy Ste 120 Atlanta, GA 30354	Date Collected: 10/19/2021 Time Collected: 0:00 Sample Collector: H. STREET Canister Number: GL065 Canister Cleaned: 9/27/2021 Received By: KL
Sample ID: AK87161 Facility Name: south dekalb Site ID: 013-089-0002 Location ID: Location Descr:	Date Received: 10/21/2021 Time Received: 11:33 AM Project: AIR Reporting Date: 12/16/2021 Received Temperature: 19.9 °C

ANALYTE	PARAMETER CODE	NOTE	EPA METHOD	RESULT	UNITS	QUALIFIER RL	ANALYSIS ANALYST DATE	MCL or QC Range
ETO by EPA Method TO-15 QC Batch 193481								
Bromofluorobenzene(Surrogate QC Std.)			EPA TO-15	10.5316	ppbV		KL 10/26/2021	8 to 12
Ethylene Oxide			EPA TO-15	0.2175	ppbV	0.016	KL 10/26/2021	
ETO Results by EPA Method TO-15								
Bromofluorobenzene(Surrogate QC Std.)			EPA TO-15	75.3327	ug/m3		KL 10/26/2021	57.22 to 85.84
Ethylene Oxide			EPA TO-15	0.3921	ug/m3	0.0288	KL 10/26/2021	

COMMENTS: \$ETO received in the lab at 2 in Hg.

ug/L: micrograms/liter
 mg/L: milligrams/liter
 mg/kg: milligrams/kilogram
 ug/kg: micrograms/kilogram
 ug/g: micrograms/gram
 ppm: parts per million
 ppb: parts per billion
 org/L: organisms/liter

<: less than
 MCL: Maximum Contaminant Level
 RL: Reporting Limit
 LSPC: result less than lower specification
 USPC: result greater than upper specification
 TIE: Tentatively Identified or Estimated
 VIOL: Violation (result exceeds MCL)

Laboratory Contacts:

Lab Director: Mark Tolbert 470-524-0577
 Inorganics: Kristy Hrehor 470-524-0689
 Metals: Shene Jones 470-524-0544
 Organics: Mary Bowman 470-524-0639
 GC Mass Spec: Ralph Schulz 470-524-0684
 Microbiology: Mary Bowman 470-524-0709

**GEORGIA DEPARTMENT OF NATURAL RESOURCES
ENVIRONMENTAL PROTECTION DIVISION**

5804 Peachtree Corners East, Norcross, GA 30092-3403
(678) 248-7383

LABORATORY REPORT

TO: Ga EPD Air Program EPD Air Prot Ambient Monitoring 4244 International Pkwy Ste 120 Atlanta, GA 30354	Date Collected: 10/25/2021 Time Collected: 0:00 Sample Collector: H. STREET Canister Number: 114368 Canister Cleaned: 9/27/2021 Received By: KL
Sample ID: AK87162 Facility Name: SOUTH DEKALB Site ID: 013-089-0002 Location ID: Location Descr:	Date Received: 10/27/2021 Time Received: 10:02 AM Project: AIR Reporting Date: 12/16/2021 Received Temperature: 17.1 °C

ANALYTE	PARAMETER CODE	NOTE	EPA METHOD	RESULT	UNITS	QUALIFIER RL	ANALYSIS ANALYST DATE	MCL or QC Range
ETO by EPA Method TO-15 QC Batch 193603								
Bromofluorobenzene(Surrogate QC Std.)			EPA TO-15	10.5325	ppbV		KL 11/2/2021	8 to 12
Ethylene Oxide			EPA TO-15	0.1582	ppbV	0.016	KL 11/2/2021	
ETO Results by EPA Method TO-15								
Bromofluorobenzene(Surrogate QC Std.)			EPA TO-15	75.3391	ug/m3		KL 11/2/2021	57.22 to 85.84
Ethylene Oxide			EPA TO-15	0.2852	ug/m3	0.0288	KL 11/2/2021	

COMMENTS: \$ETO received in the lab at 3 in Hg.

ug/L: micrograms/liter
 mg/L: milligrams/liter
 mg/kg: milligrams/kilogram
 ug/kg: micrograms/kilogram
 ug/g: micrograms/gram
 ppm: parts per million
 ppb: parts per billion
 org/L: organisms/liter

<: less than
 MCL: Maximum Contaminant Level
 RL: Reporting Limit
 LSPC: result less than lower specification
 USPC: result greater than upper specification
 TIE: Tentatively Identified or Estimated
 VIOL: Violation (result exceeds MCL)

Laboratory Contacts:

Lab Director: Mark Tolbert 470-524-0577
 Inorganics: Kristy Hrehor 470-524-0689
 Metals: Shene Jones 470-524-0544
 Organics: Mary Bowman 470-524-0639
 GC Mass Spec: Ralph Schulz 470-524-0684
 Microbiology: Mary Bowman 470-524-0709

**GEORGIA DEPARTMENT OF NATURAL RESOURCES
ENVIRONMENTAL PROTECTION DIVISION**

5804 Peachtree Corners East, Norcross, GA 30092-3403
(678) 248-7383

LABORATORY REPORT

TO: Ga EPD Air Program EPD Air Prot Ambient Monitoring 4244 International Pkwy Ste 120 Atlanta, GA 30354	Date Collected: 10/1/2021 Time Collected: 0:00 Sample Collector: J. BRYANT Chlorination: Sample Type: Received By: KL
Sample ID: AK87165 Facility Name: COBB S2 QA Site ID: S2 Location ID: QCCAN Location Descr: S2	Date Received: 10/15/2021 Time Received: 11:35 AM Project: DATA STUDY Reporting Date: 12/16/2021 Received Temperature: 21.9 °C

ANALYTE	PARAMETER CODE	NOTE	EPA METHOD	RESULT	UNITS	QUALIFIER RL	ANALYSIS ANALYST DATE	MCL or QC Range
ETO by EPA Method TO-15 QC Batch 193371								
Bromofluorobenzene(Surrogate QC Std.)			EPA TO-15	10.6288	ppbV		KL 10/20/2021	8 to 12
Ethylene Oxide			EPA TO-15	0.1893	ppbV	0.016	KL 10/20/2021	
ETO Results by EPA Method TO-15								
Bromofluorobenzene(Surrogate QC Std.)			EPA TO-15	76.0279	ug/m3		KL 10/20/2021	57.22 to 85.84
Ethylene Oxide			EPA TO-15	0.3412	ug/m3	0.0288	KL 10/20/2021	

COMMENTS: \$ETO received in the lab at 4.5 in Hg.

ug/L: micrograms/liter
 mg/L: milligrams/liter
 mg/kg: milligrams/kilogram
 ug/kg: micrograms/kilogram
 ug/g: micrograms/gram
 ppm: parts per million
 ppb: parts per billion
 org/L: organisms/liter

<: less than
 MCL: Maximum Contaminant Level
 RL: Reporting Limit
 LSPC: result less than lower specification
 USPC: result greater than upper specification
 TIE: Tentatively Identified or Estimated
 VIOL: Violation (result exceeds MCL)

Laboratory Contacts:

Lab Director: Mark Tolbert 470-524-0577
 Inorganics: Kristy Hrehor 470-524-0689
 Metals: Shene Jones 470-524-0544
 Organics: Mary Bowman 470-524-0639
 GC Mass Spec: Ralph Schulz 470-524-0684
 Microbiology: Mary Bowman 470-524-0709

**GEORGIA DEPARTMENT OF NATURAL RESOURCES
ENVIRONMENTAL PROTECTION DIVISION**

5804 Peachtree Corners East, Norcross, GA 30092-3403
(678) 248-7383

LABORATORY REPORT

TO: Ga EPD Air Program EPD Air Prot Ambient Monitoring 4244 International Pkwy Ste 120 Atlanta, GA 30354	Date Collected: 10/1/2021 Time Collected: 0:00 Sample Collector: J. BRYANT Chlorination: Sample Type: Received By: KL
Sample ID: AK87166 Facility Name: COBB S2 Site ID: S2 Location ID: Location Descr: S2	Date Received: 10/15/2021 Time Received: 11:35 AM Project: DATA STUDY Reporting Date: 12/16/2021 Received Temperature: 23.9 °C

ANALYTE	PARAMETER CODE	NOTE	EPA METHOD	RESULT	UNITS	QUALIFIER RL	ANALYSIS ANALYST DATE	MCL or QC Range
ETO by EPA Method TO-15 QC Batch 193371								
Bromofluorobenzene(Surrogate QC Std.)			EPA TO-15	10.2872	ppbV		KL 10/20/2021	8 to 12
Ethylene Oxide			EPA TO-15	0.1930	ppbV	0.016	KL 10/20/2021	
ETO Results by EPA Method TO-15								
Bromofluorobenzene(Surrogate QC Std.)			EPA TO-15	73.5845	ug/m3		KL 10/20/2021	57.22 to 85.84
Ethylene Oxide			EPA TO-15	0.3479	ug/m3	0.0288	KL 10/20/2021	

COMMENTS: \$ETO received in the lab at 6 in Hg.

ug/L: micrograms/liter
 mg/L: milligrams/liter
 mg/kg: milligrams/kilogram
 ug/kg: micrograms/kilogram
 ug/g: micrograms/gram
 ppm: parts per million
 ppb: parts per billion
 org/L: organisms/liter

<: less than
 MCL: Maximum Contaminant Level
 RL: Reporting Limit
 LSPC: result less than lower specification
 USPC: result greater than upper specification
 TIE: Tentatively Identified or Estimated
 VIOL: Violation (result exceeds MCL)

Laboratory Contacts:

Lab Director:	Mark Tolbert	470-524-0577
Inorganics:	Kristy Hrehor	470-524-0689
Metals:	Shene Jones	470-524-0544
Organics:	Mary Bowman	470-524-0639
GC Mass Spec:	Ralph Schulz	470-524-0684
Microbiology:	Mary Bowman	470-524-0709

**GEORGIA DEPARTMENT OF NATURAL RESOURCES
ENVIRONMENTAL PROTECTION DIVISION**

5804 Peachtree Corners East, Norcross, GA 30092-3403
(678) 248-7383

LABORATORY REPORT

TO: Ga EPD Air Program EPD Air Prot Ambient Monitoring 4244 International Pkwy Ste 120 Atlanta, GA 30354	Date Collected: 10/1/2021 Time Collected: 0:00 Sample Collector: J. BRYANT Chlorination: Sample Type: Received By: KL
Sample ID: AK87167 Facility Name: COVINGTON C2 QA Site ID: C2 Location ID: Location Descr: C2	Date Received: 10/15/2021 Time Received: 11:35 AM Project: DATA STUDY Reporting Date: 12/16/2021 Received Temperature: 24.6 °C

ANALYTE	PARAMETER CODE NOTE	EPA METHOD	RESULT	UNITS	QUALIFIER RL	ANALYSIS ANALYST DATE	MCL or QC Range
ETO by EPA Method TO-15 QC Batch 193371							
Bromofluorobenzene(Surrogate QC Std.)		EPA TO-15	10.6269	ppbV	KL	10/20/2021	8 to 12
Ethylene Oxide		EPA TO-15	0.1089	ppbV	0.016	KL 10/20/2021	
ETO Results by EPA Method TO-15							
Bromofluorobenzene(Surrogate QC Std.)		EPA TO-15	76.0143	ug/m3	KL	10/20/2021	57.22 to 85.84
Ethylene Oxide		EPA TO-15	0.1963	ug/m3	0.0288	KL 10/20/2021	

COMMENTS: \$ETO received in the lab at 5 in Hg.

ug/L: micrograms/liter
 mg/L: milligrams/liter
 mg/kg: milligrams/kilogram
 ug/kg: micrograms/kilogram
 ug/g: micrograms/gram
 ppm: parts per million
 ppb: parts per billion
 org/L: organisms/liter

<: less than
 MCL: Maximum Contaminant Level
 RL: Reporting Limit
 LSPC: result less than lower specification
 USPC: result greater than upper specification
 TIE: Tentatively Identified or Estimated
 VIOL: Violation (result exceeds MCL)

Laboratory Contacts:

Lab Director:	Mark Tolbert	470-524-0577
Inorganics:	Kristy Hrehor	470-524-0689
Metals:	Shene Jones	470-524-0544
Organics:	Mary Bowman	470-524-0639
GC Mass Spec:	Ralph Schulz	470-524-0684
Microbiology:	Mary Bowman	470-524-0709

**GEORGIA DEPARTMENT OF NATURAL RESOURCES
ENVIRONMENTAL PROTECTION DIVISION**

5804 Peachtree Corners East, Norcross, GA 30092-3403
(678) 248-7383

LABORATORY REPORT

TO: Ga EPD Air Program EPD Air Prot Ambient Monitoring 4244 International Pkwy Ste 120 Atlanta, GA 30354	Date Collected: 10/1/2021 Time Collected: 0:00 Sample Collector: J. BRYANT Chlorination: Sample Type: Received By: KL
	Date Received: 10/15/2021 Time Received: 11:35 AM Project: DATA STUDY Reporting Date: 12/16/2021 Received Temperature: 25.9 °C
Sample ID: AK87168 Facility Name: COVINGTON C2 Site ID: C2 Location ID: Location Descr: C2	

ANALYTE	PARAMETER	EPA	RESULT	QUALIFIER	ANALYSIS	MCL or			
	CODE	NOTE		METHOD	UNITS		RL	ANALYST	DATE
ETO by EPA Method TO-15 QC Batch 193371									
Bromofluorobenzene(Surrogate QC Std.)			EPA TO-15	10.3441	ppbV		KL	10/20/2021	8 to 12
Ethylene Oxide			EPA TO-15	0.1298	ppbV	0.016	KL	10/20/2021	
ETO Results by EPA Method TO-15									
Bromofluorobenzene(Surrogate QC Std.)			EPA TO-15	73.9915	ug/m3		KL	10/20/2021	57.22 to 85.84
Ethylene Oxide			EPA TO-15	0.234	ug/m3	0.0288	KL	10/20/2021	

COMMENTS: \$ETO received in the lab at 6.5 in Hg.

ug/L: micrograms/liter
 mg/L: milligrams/liter
 mg/kg: milligrams/kilogram
 ug/kg: micrograms/kilogram
 ug/g: micrograms/gram
 ppm: parts per million
 ppb: parts per billion
 org/L: organisms/liter

<: less than
 MCL: Maximum Contaminant Level
 RL: Reporting Limit
 LSPC: result less than lower specification
 USPC: result greater than upper specification
 TIE: Tentatively Identified or Estimated
 VIOL: Violation (result exceeds MCL)

Laboratory Contacts:

Lab Director: Mark Tolbert 470-524-0577
 Inorganics: Kristy Hrehor 470-524-0689
 Metals: Shene Jones 470-524-0544
 Organics: Mary Bowman 470-524-0639
 GC Mass Spec: Ralph Schulz 470-524-0684
 Microbiology: Mary Bowman 470-524-0709

**GEORGIA DEPARTMENT OF NATURAL RESOURCES
ENVIRONMENTAL PROTECTION DIVISION**

5804 Peachtree Corners East, Norcross, GA 30092-3403
(678) 248-7383

LABORATORY REPORT

TO: Ga EPD Air Program EPD Air Prot Ambient Monitoring 4244 International Pkwy Ste 120 Atlanta, GA 30354	Date Collected: 10/1/2021 Time Collected: 0:00 Sample Collector: J. BRYANT Chlorination: Sample Type: Received By: KL
Sample ID: AK87169 Facility Name: FULTON F2 QA Site ID: F2 Location ID: Location Descr: F2	Date Received: 10/15/2021 Time Received: 11:35 AM Project: DATA STUDY Reporting Date: 12/16/2021 Received Temperature: 21.5 °C

ANALYTE	PARAMETER CODE	NOTE	EPA METHOD	RESULT	UNITS	QUALIFIER RL	ANALYSIS ANALYST DATE	MCL or QC Range
ETO by EPA Method TO-15 QC Batch 193371								
Bromofluorobenzene(Surrogate QC Std.)			EPA TO-15	10.2791	ppbV		KL 10/20/2021	8 to 12
Ethylene Oxide			EPA TO-15	0.1117	ppbV	0.016	KL 10/20/2021	
ETO Results by EPA Method TO-15								
Bromofluorobenzene(Surrogate QC Std.)			EPA TO-15	73.5265	ug/m3		KL 10/20/2021	57.22 to 85.84
Ethylene Oxide			EPA TO-15	0.2013	ug/m3	0.0288	KL 10/20/2021	

COMMENTS: \$ETO received in the lab at 7 in Hg.

ug/L: micrograms/liter
 mg/L: milligrams/liter
 mg/kg: milligrams/kilogram
 ug/kg: micrograms/kilogram
 ug/g: micrograms/gram
 ppm: parts per million
 ppb: parts per billion
 org/L: organisms/liter

<: less than
 MCL: Maximum Contaminant Level
 RL: Reporting Limit
 LSPC: result less than lower specification
 USPC: result greater than upper specification
 TIE: Tentatively Identified or Estimated
 VIOL: Violation (result exceeds MCL)

Laboratory Contacts:

Lab Director: Mark Tolbert 470-524-0577
 Inorganics: Kristy Hrehor 470-524-0689
 Metals: Shene Jones 470-524-0544
 Organics: Mary Bowman 470-524-0639
 GC Mass Spec: Ralph Schulz 470-524-0684
 Microbiology: Mary Bowman 470-524-0709

**GEORGIA DEPARTMENT OF NATURAL RESOURCES
ENVIRONMENTAL PROTECTION DIVISION**

5804 Peachtree Corners East, Norcross, GA 30092-3403
(678) 248-7383

LABORATORY REPORT

TO: Ga EPD Air Program EPD Air Prot Ambient Monitoring 4244 International Pkwy Ste 120 Atlanta, GA 30354	Date Collected: 10/1/2021 Time Collected: 0:00 Sample Collector: J. BRYANT Chlorination: Sample Type: Received By: KL
	Date Received: 10/15/2021 Time Received: 11:35 AM Project: DATA STUDY Reporting Date: 12/16/2021 Received Temperature: 22.9 °C
Sample ID: AK87170 Facility Name: FULTON F2 Site ID: F2 Location ID: Location Descr: F2	

ANALYTE	PARAMETER CODE	NOTE	EPA METHOD	RESULT	UNITS	QUALIFIER RL	ANALYSIS ANALYST	DATE	MCL or QC Range
ETO by EPA Method TO-15 QC Batch 193371									
Bromofluorobenzene(Surrogate QC Std.)			EPA TO-15	10.1546	ppbV		KL	10/21/2021	8 to 12
Ethylene Oxide			EPA TO-15	0.0781	ppbV	0.016	KL	10/21/2021	
ETO Results by EPA Method TO-15									
Bromofluorobenzene(Surrogate QC Std.)			EPA TO-15	72.636	ug/m3		KL	10/21/2021	57.22 to 85.84
Ethylene Oxide			EPA TO-15	0.1408	ug/m3	0.0288	KL	10/21/2021	

COMMENTS: \$ETO received in the lab at 7 in Hg.

ug/L: micrograms/liter
 mg/L: milligrams/liter
 mg/kg: milligrams/kilogram
 ug/kg: micrograms/kilogram
 ug/g: micrograms/gram
 ppm: parts per million
 ppb: parts per billion
 org/L: organisms/liter

<: less than
 MCL: Maximum Contaminant Level
 RL: Reporting Limit
 LSPC: result less than lower specification
 USPC: result greater than upper specification
 TIE: Tentatively Identified or Estimated
 VIOL: Violation (result exceeds MCL)

Laboratory Contacts:

Lab Director: Mark Tolbert 470-524-0577
 Inorganics: Kristy Hrehor 470-524-0689
 Metals: Shene Jones 470-524-0544
 Organics: Mary Bowman 470-524-0639
 GC Mass Spec: Ralph Schulz 470-524-0684
 Microbiology: Mary Bowman 470-524-0709

**GEORGIA DEPARTMENT OF NATURAL RESOURCES
ENVIRONMENTAL PROTECTION DIVISION**

5804 Peachtree Corners East, Norcross, GA 30092-3403
(678) 248-7383

LABORATORY REPORT

TO: Ga EPD Air Program EPD Air Prot Ambient Monitoring 4244 International Pkwy Ste 120 Atlanta, GA 30354	Date Collected: 10/1/2021 Time Collected: 0:00 Sample Collector: J. BRYANT Canister Number: 110343 Canister Cleaned: 9/27/2021 Received By: KL
Sample ID: AK87171 Facility Name: ETO DATA STUDY Site ID: 013-089-0002 Location ID: Location Descr:	Date Received: 10/5/2021 Time Received: 10:47 AM Project: AIR Reporting Date: 12/16/2021 Received Temperature: 22.4 °C

ANALYTE	PARAMETER CODE	NOTE	EPA METHOD	RESULT	UNITS	QUALIFIER RL	ANALYSIS ANALYST DATE	MCL or QC Range
ETO by EPA Method TO-15 QC Batch 193070								
Bromofluorobenzene(Surrogate QC Std.)			EPA TO-15	9.5021	ppbV		KL 10/5/2021	8 to 12
Ethylene Oxide			EPA TO-15	0.2287	ppbV	0.016	KL 10/5/2021	
ETO Results by EPA Method TO-15								
Bromofluorobenzene(Surrogate QC Std.)			EPA TO-15	67.9686	ug/m3		KL 10/5/2021	57.22 to 85.84
Ethylene Oxide			EPA TO-15	0.4122	ug/m3	0.0288	KL 10/5/2021	

COMMENTS: \$ETO received in the lab at 11 psi.

ug/L: micrograms/liter
 mg/L: milligrams/liter
 mg/kg: milligrams/kilogram
 ug/kg: micrograms/kilogram
 ug/g: micrograms/gram
 ppm: parts per million
 ppb: parts per billion
 org/L: organisms/liter

<: less than
 MCL: Maximum Contaminant Level
 RL: Reporting Limit
 LSPC: result less than lower specification
 USPC: result greater than upper specification
 TIE: Tentatively Identified or Estimated
 VIOL: Violation (result exceeds MCL)

Laboratory Contacts:

Lab Director:	Mark Tolbert	470-524-0577
Inorganics:	Kristy Hrehor	470-524-0689
Metals:	Shene Jones	470-524-0544
Organics:	Mary Bowman	470-524-0639
GC Mass Spec:	Ralph Schulz	470-524-0684
Microbiology:	Mary Bowman	470-524-0709

**GEORGIA DEPARTMENT OF NATURAL RESOURCES
ENVIRONMENTAL PROTECTION DIVISION**

5804 Peachtree Corners East, Norcross, GA 30092-3403
(678) 248-7383

LABORATORY REPORT

TO: Ga EPD Air Program EPD Air Prot Ambient Monitoring 4244 International Pkwy Ste 120 Atlanta, GA 30354	Date Collected: 10/13/2021 Time Collected: 0:00 Sample Collector: J. BRYANT Chlorination: Sample Type: Received By: HZ
Sample ID: AK87852 Facility Name: COBB S2 Site ID: S2 Location ID: QCCAN Location Descr: S2	Date Received: 10/21/2021 Time Received: 11:33 AM Project: DATA STUDY Reporting Date: 12/16/2021 Received Temperature: 21.9 °C

ANALYTE	PARAMETER CODE NOTE	EPA METHOD	RESULT	UNITS	QUALIFIER RL	ANALYSIS ANALYST DATE	MCL or QC Range
ETO by EPA Method TO-15 QC Batch 193481							
Bromofluorobenzene(Surrogate QC Std.)	EPA TO-15	10.5403	ppbV		KL	10/26/2021	8 to 12
Ethylene Oxide	EPA TO-15	0.1772	ppbV	0.016	KL	10/26/2021	
ETO Results by EPA Method TO-15							
Bromofluorobenzene(Surrogate QC Std.)	EPA TO-15	75.3949	ug/m3		KL	10/26/2021	57.22 to 85.84
Ethylene Oxide	EPA TO-15	0.3194	ug/m3	0.0288	KL	10/26/2021	

COMMENTS: \$ETO received in the lab at 1 psi.

ug/L: micrograms/liter
 mg/L: milligrams/liter
 mg/kg: milligrams/kilogram
 ug/kg: micrograms/kilogram
 ug/g: micrograms/gram
 ppm: parts per million
 ppb: parts per billion
 org/L: organisms/liter

<: less than
 MCL: Maximum Contaminant Level
 RL: Reporting Limit
 LSPC: result less than lower specification
 USPC: result greater than upper specification
 TIE: Tentatively Identified or Estimated
 VIOL: Violation (result exceeds MCL)

Laboratory Contacts:

Lab Director: Mark Tolbert 470-524-0577
 Inorganics: Kristy Hrehor 470-524-0689
 Metals: Shene Jones 470-524-0544
 Organics: Mary Bowman 470-524-0639
 GC Mass Spec: Ralph Schulz 470-524-0684
 Microbiology: Mary Bowman 470-524-0709

**GEORGIA DEPARTMENT OF NATURAL RESOURCES
ENVIRONMENTAL PROTECTION DIVISION**

5804 Peachtree Corners East, Norcross, GA 30092-3403
(678) 248-7383

LABORATORY REPORT

TO: Ga EPD Air Program EPD Air Prot Ambient Monitoring 4244 International Pkwy Ste 120 Atlanta, GA 30354	Date Collected: 10/13/2021 Time Collected: 0:00 Sample Collector: J. BRYANT Chlorination: Sample Type: Received By: HZ
	Date Received: 10/21/2021 Time Received: 11:33 AM Project: DATA STUDY Reporting Date: 12/16/2021 Received Temperature: 20.1 °C
Sample ID: AK87853 Facility Name: COBB S7 SA Site ID: S7 Location ID: Location Descr: S7	

ANALYTE	PARAMETER CODE	NOTE	EPA METHOD	RESULT	UNITS	QUALIFIER RL	ANALYSIS ANALYST	DATE	MCL or QC Range
ETO by EPA Method TO-15 QC Batch 193481									
Bromofluorobenzene(Surrogate QC Std.)			EPA TO-15	10.4631	ppbV		KL	10/26/2021	8 to 12
Ethylene Oxide			EPA TO-15	0.1614	ppbV	0.016	KL	10/26/2021	
ETO Results by EPA Method TO-15									
Bromofluorobenzene(Surrogate QC Std.)			EPA TO-15	74.8427	ug/m3		KL	10/26/2021	57.22 to 85.84
Ethylene Oxide			EPA TO-15	0.2909	ug/m3	0.0288	KL	10/26/2021	

COMMENTS: \$ETO received in the lab at 0.6 psi.

ug/L: micrograms/liter
 mg/L: milligrams/liter
 mg/kg: milligrams/kilogram
 ug/kg: micrograms/kilogram
 ug/g: micrograms/gram
 ppm: parts per million
 ppb: parts per billion
 org/L: organisms/liter

<: less than
 MCL: Maximum Contaminant Level
 RL: Reporting Limit
 LSPC: result less than lower specification
 USPC: result greater than upper specification
 TIE: Tentatively Identified or Estimated
 VIOL: Violation (result exceeds MCL)

Laboratory Contacts:

Lab Director: Mark Tolbert 470-524-0577
 Inorganics: Kristy Hrehor 470-524-0689
 Metals: Shene Jones 470-524-0544
 Organics: Mary Bowman 470-524-0639
 GC Mass Spec: Ralph Schulz 470-524-0684
 Microbiology: Mary Bowman 470-524-0709

**GEORGIA DEPARTMENT OF NATURAL RESOURCES
ENVIRONMENTAL PROTECTION DIVISION**

5804 Peachtree Corners East, Norcross, GA 30092-3403
(678) 248-7383

LABORATORY REPORT

TO: Ga EPD Air Program EPD Air Prot Ambient Monitoring 4244 International Pkwy Ste 120 Atlanta, GA 30354	Date Collected: 10/13/2021 Time Collected: 0:00 Sample Collector: J. BRYANT Chlorination: Sample Type: Received By: HZ
	Date Received: 10/21/2021 Time Received: 11:33 AM Project: DATA STUDY Reporting Date: 12/16/2021 Received Temperature: 24.9 °C
Sample ID: AK87854 Facility Name: COBB S6 SA Site ID: S6 Location ID: Location Descr: S6	

ANALYTE	PARAMETER CODE	NOTE	EPA METHOD	RESULT	UNITS	QUALIFIER RL	ANALYSIS ANALYST	DATE	MCL or QC Range
ETO by EPA Method TO-15 QC Batch 193481									
Bromofluorobenzene(Surrogate QC Std.)			EPA TO-15	10.6073	ppbV		KL	10/26/2021	8 to 12
Ethylene Oxide			EPA TO-15	0.1987	ppbV	0.016	KL	10/26/2021	
ETO Results by EPA Method TO-15									
Bromofluorobenzene(Surrogate QC Std.)			EPA TO-15	75.8741	ug/m3		KL	10/26/2021	57.22 to 85.84
Ethylene Oxide			EPA TO-15	0.3582	ug/m3	0.0288	KL	10/26/2021	

COMMENTS: \$ETO received in the lab at 0.8 psi.

ug/L: micrograms/liter
 mg/L: milligrams/liter
 mg/kg: milligrams/kilogram
 ug/kg: micrograms/kilogram
 ug/g: micrograms/gram
 ppm: parts per million
 ppb: parts per billion
 org/L: organisms/liter

<: less than
 MCL: Maximum Contaminant Level
 RL: Reporting Limit
 LSPC: result less than lower specification
 USPC: result greater than upper specification
 TIE: Tentatively Identified or Estimated
 VIOL: Violation (result exceeds MCL)

Laboratory Contacts:

Lab Director: Mark Tolbert 470-524-0577
 Inorganics: Kristy Hrehor 470-524-0689
 Metals: Shene Jones 470-524-0544
 Organics: Mary Bowman 470-524-0639
 GC Mass Spec: Ralph Schulz 470-524-0684
 Microbiology: Mary Bowman 470-524-0709

**GEORGIA DEPARTMENT OF NATURAL RESOURCES
ENVIRONMENTAL PROTECTION DIVISION**

5804 Peachtree Corners East, Norcross, GA 30092-3403
(678) 248-7383

LABORATORY REPORT

TO: Ga EPD Air Program EPD Air Prot Ambient Monitoring 4244 International Pkwy Ste 120 Atlanta, GA 30354	Date Collected: 10/13/2021 Time Collected: 0:00 Sample Collector: J. BRYANT Chlorination: Sample Type: Received By: HZ
Sample ID: AK87855 Facility Name: COVINGTON C2 Site ID: C2 Location ID: Location Descr: C2	Date Received: 10/21/2021 Time Received: 11:33 AM Project: DATA STUDY Reporting Date: 12/16/2021 Received Temperature: 19.8 °C

ANALYTE	PARAMETER CODE	NOTE	EPA METHOD	RESULT	UNITS	QUALIFIER RL	ANALYSIS ANALYST DATE	MCL or QC Range
ETO by EPA Method TO-15 QC Batch 193481								
Bromofluorobenzene(Surrogate QC Std.)			EPA TO-15	10.6457	ppbV		KL 10/26/2021	8 to 12
Ethylene Oxide			EPA TO-15	0.0635	ppbV	0.016	KL 10/26/2021	
ETO Results by EPA Method TO-15								
Bromofluorobenzene(Surrogate QC Std.)			EPA TO-15	76.1488	ug/m3		KL 10/26/2021	57.22 to 85.84
Ethylene Oxide			EPA TO-15	0.1145	ug/m3	0.0288	KL 10/26/2021	

COMMENTS: \$ETO received in the lab at 5.5 in Hg.

ug/L: micrograms/liter
 mg/L: milligrams/liter
 mg/kg: milligrams/kilogram
 ug/kg: micrograms/kilogram
 ug/g: micrograms/gram
 ppm: parts per million
 ppb: parts per billion
 org/L: organisms/liter

<: less than
 MCL: Maximum Contaminant Level
 RL: Reporting Limit
 LSPC: result less than lower specification
 USPC: result greater than upper specification
 TIE: Tentatively Identified or Estimated
 VIOL: Violation (result exceeds MCL)

Laboratory Contacts:

Lab Director: Mark Tolbert 470-524-0577
 Inorganics: Kristy Hrehor 470-524-0689
 Metals: Shene Jones 470-524-0544
 Organics: Mary Bowman 470-524-0639
 GC Mass Spec: Ralph Schulz 470-524-0684
 Microbiology: Mary Bowman 470-524-0709

**GEORGIA DEPARTMENT OF NATURAL RESOURCES
ENVIRONMENTAL PROTECTION DIVISION**

5804 Peachtree Corners East, Norcross, GA 30092-3403
(678) 248-7383

LABORATORY REPORT

TO: Ga EPD Air Program EPD Air Prot Ambient Monitoring 4244 International Pkwy Ste 120 Atlanta, GA 30354	Date Collected: 10/13/2021 Time Collected: 0:00 Sample Collector: J. BRYANT Chlorination: Sample Type: Received By: HZ
Sample ID: AK87856 Facility Name: COVINGTON C7 SA Site ID: C7 Location ID: Location Descr: C7	Date Received: 10/21/2021 Time Received: 11:33 AM Project: DATA STUDY Reporting Date: 12/16/2021 Received Temperature: 21.1 °C

ANALYTE	PARAMETER CODE	NOTE	EPA METHOD	RESULT	UNITS	QUALIFIER RL	ANALYSIS ANALYST DATE	MCL or QC Range
ETO by EPA Method TO-15 QC Batch 193481								
Bromofluorobenzene(Surrogate QC Std.)			EPA TO-15	10.3917	ppbV		KL 10/26/2021	8 to 12
Ethylene Oxide			EPA TO-15	0.0827	ppbV	0.016	KL 10/26/2021	
ETO Results by EPA Method TO-15								
Bromofluorobenzene(Surrogate QC Std.)			EPA TO-15	74.332	ug/m3		KL 10/26/2021	57.22 to 85.84
Ethylene Oxide			EPA TO-15	0.1491	ug/m3	0.0288	KL 10/26/2021	

COMMENTS: \$ETO received in the lab at 4 in Hg.

ug/L: micrograms/liter
 mg/L: milligrams/liter
 mg/kg: milligrams/kilogram
 ug/kg: micrograms/kilogram
 ug/g: micrograms/gram
 ppm: parts per million
 ppb: parts per billion
 org/L: organisms/liter

<: less than
 MCL: Maximum Contaminant Level
 RL: Reporting Limit
 LSPC: result less than lower specification
 USPC: result greater than upper specification
 TIE: Tentatively Identified or Estimated
 VIOL: Violation (result exceeds MCL)

Laboratory Contacts:

Lab Director: Mark Tolbert 470-524-0577
 Inorganics: Kristy Hrehor 470-524-0689
 Metals: Shene Jones 470-524-0544
 Organics: Mary Bowman 470-524-0639
 GC Mass Spec: Ralph Schulz 470-524-0684
 Microbiology: Mary Bowman 470-524-0709

**GEORGIA DEPARTMENT OF NATURAL RESOURCES
ENVIRONMENTAL PROTECTION DIVISION**

5804 Peachtree Corners East, Norcross, GA 30092-3403
(678) 248-7383

LABORATORY REPORT

TO: Ga EPD Air Program EPD Air Prot Ambient Monitoring 4244 International Pkwy Ste 120 Atlanta, GA 30354	Date Collected: 10/13/2021 Time Collected: 0:00 Sample Collector: J. BRYANT Chlorination: Sample Type: Received By: HZ
Sample ID: AK87857 Facility Name: FULTON F1 SA Site ID: F1 Location ID: Location Descr: F1	Date Received: 10/21/2021 Time Received: 11:33 AM Project: DATA STUDY Reporting Date: 12/16/2021 Received Temperature: 20.3 °C

ANALYTE	PARAMETER CODE	NOTE	EPA METHOD	RESULT	UNITS	QUALIFIER RL	ANALYSIS ANALYST DATE	MCL or QC Range
ETO by EPA Method TO-15 QC Batch 193481								
Bromofluorobenzene(Surrogate QC Std.)			EPA TO-15	10.0915	ppbV		KL 10/26/2021	8 to 12
Ethylene Oxide			EPA TO-15	0.1493	ppbV	0.016	KL 10/26/2021	
ETO Results by EPA Method TO-15								
Bromofluorobenzene(Surrogate QC Std.)			EPA TO-15	72.1846	ug/m3		KL 10/26/2021	57.22 to 85.84
Ethylene Oxide			EPA TO-15	0.2691	ug/m3	0.0288	KL 10/26/2021	

COMMENTS: \$ETO received in the lab at 3 in Hg.

ug/L: micrograms/liter
 mg/L: milligrams/liter
 mg/kg: milligrams/kilogram
 ug/kg: micrograms/kilogram
 ug/g: micrograms/gram
 ppm: parts per million
 ppb: parts per billion
 org/L: organisms/liter

<: less than
 MCL: Maximum Contaminant Level
 RL: Reporting Limit
 LSPC: result less than lower specification
 USPC: result greater than upper specification
 TIE: Tentatively Identified or Estimated
 VIOL: Violation (result exceeds MCL)

Laboratory Contacts:

Lab Director: Mark Tolbert 470-524-0577
 Inorganics: Kristy Hrehor 470-524-0689
 Metals: Shene Jones 470-524-0544
 Organics: Mary Bowman 470-524-0639
 GC Mass Spec: Ralph Schulz 470-524-0684
 Microbiology: Mary Bowman 470-524-0709

**GEORGIA DEPARTMENT OF NATURAL RESOURCES
ENVIRONMENTAL PROTECTION DIVISION**

5804 Peachtree Corners East, Norcross, GA 30092-3403
(678) 248-7383

LABORATORY REPORT

TO: Ga EPD Air Program EPD Air Prot Ambient Monitoring 4244 International Pkwy Ste 120 Atlanta, GA 30354	Date Collected: 10/13/2021 Time Collected: 0:00 Sample Collector: J. BRYANT Chlorination: Sample Type: Received By: HZ
Sample ID: AK87858 Facility Name: FULTON F2 Site ID: F2 Location ID: Location Descr: F2	Date Received: 10/21/2021 Time Received: 11:33 AM Project: DATA STUDY Reporting Date: 12/16/2021 Received Temperature: 22.5 °C

ANALYTE	PARAMETER CODE	NOTE	EPA METHOD	RESULT	UNITS	QUALIFIER RL	ANALYSIS ANALYST DATE	MCL or QC Range
ETO by EPA Method TO-15 QC Batch 193481								
Bromofluorobenzene(Surrogate QC Std.)			EPA TO-15	10.6174	ppbV		KL 10/26/2021	8 to 12
Ethylene Oxide			EPA TO-15	0.2171	ppbV	0.016	KL 10/26/2021	
ETO Results by EPA Method TO-15								
Bromofluorobenzene(Surrogate QC Std.)			EPA TO-15	75.9464	ug/m3		KL 10/26/2021	57.22 to 85.84
Ethylene Oxide			EPA TO-15	0.3913	ug/m3	0.0288	KL 10/26/2021	

COMMENTS: \$ETO received in the lab at 4 in Hg.

ug/L: micrograms/liter
 mg/L: milligrams/liter
 mg/kg: milligrams/kilogram
 ug/kg: micrograms/kilogram
 ug/g: micrograms/gram
 ppm: parts per million
 ppb: parts per billion
 org/L: organisms/liter

<: less than
 MCL: Maximum Contaminant Level
 RL: Reporting Limit
 LSPC: result less than lower specification
 USPC: result greater than upper specification
 TIE: Tentatively Identified or Estimated
 VIOL: Violation (result exceeds MCL)

Laboratory Contacts:

Lab Director: Mark Tolbert 470-524-0577
 Inorganics: Kristy Hrehor 470-524-0689
 Metals: Shene Jones 470-524-0544
 Organics: Mary Bowman 470-524-0639
 GC Mass Spec: Ralph Schulz 470-524-0684
 Microbiology: Mary Bowman 470-524-0709

**GEORGIA DEPARTMENT OF NATURAL RESOURCES
ENVIRONMENTAL PROTECTION DIVISION**

5804 Peachtree Corners East, Norcross, GA 30092-3403
(678) 248-7383

LABORATORY REPORT

TO: Ga EPD Air Program EPD Air Prot Ambient Monitoring 4244 International Pkwy Ste 120 Atlanta, GA 30354	Date Collected: 10/31/2021 Time Collected: 0:00 Sample Collector: J. BRYANT Chlorination: Sample Type: Received By: HZ
Sample ID: AK88022 Facility Name: COBB S2 Site ID: S2 Location ID: QCCAN Location Descr: S2	Date Received: 11/16/2021 Time Received: 9:32 AM Project: DATA STUDY Reporting Date: 12/16/2021 Received Temperature: 21.5 °C

ANALYTE	PARAMETER CODE	NOTE	EPA METHOD	RESULT	UNITS	QUALIFIER RL	ANALYSIS ANALYST DATE	MCL or QC Range
ETO by EPA Method TO-15 QC Batch 193808								
Bromofluorobenzene(Surrogate QC Std.)			EPA TO-15	11.1011	ppbV		KL 11/16/2021	8 to 12
Ethylene Oxide			EPA TO-15	0.0547	ppbV	0.016	KL 11/16/2021	
ETO Results by EPA Method TO-15								
Bromofluorobenzene(Surrogate QC Std.)			EPA TO-15	79.4063	ug/m3		KL 11/16/2021	57.22 to 85.84
Ethylene Oxide			EPA TO-15	0.0986	ug/m3	0.0288	KL 11/16/2021	

COMMENTS: \$ETO received in the lab at 8 in Hg.

ug/L: micrograms/liter
 mg/L: milligrams/liter
 mg/kg: milligrams/kilogram
 ug/kg: micrograms/kilogram
 ug/g: micrograms/gram
 ppm: parts per million
 ppb: parts per billion
 org/L: organisms/liter

<: less than
 MCL: Maximum Contaminant Level
 RL: Reporting Limit
 LSPC: result less than lower specification
 USPC: result greater than upper specification
 TIE: Tentatively Identified or Estimated
 VIOL: Violation (result exceeds MCL)

Laboratory Contacts:

Lab Director:	Mark Tolbert	470-524-0577
Inorganics:	Kristy Hrehor	470-524-0689
Metals:	Shene Jones	470-524-0544
Organics:	Mary Bowman	470-524-0639
GC Mass Spec:	Ralph Schulz	470-524-0684
Microbiology:	Mary Bowman	470-524-0709

**GEORGIA DEPARTMENT OF NATURAL RESOURCES
ENVIRONMENTAL PROTECTION DIVISION**

5804 Peachtree Corners East, Norcross, GA 30092-3403
(678) 248-7383

LABORATORY REPORT

TO: Ga EPD Air Program EPD Air Prot Ambient Monitoring 4244 International Pkwy Ste 120 Atlanta, GA 30354	Date Collected: 10/27/2021 Time Collected: 0:00 Sample Collector: J. BRYANT Chlorination: Sample Type: Received By: HZ
	Date Received: 11/16/2021 Time Received: 9:32 AM Project: DATA STUDY Reporting Date: 12/16/2021 Received Temperature: 21.4 °C
Sample ID: AK88023 Facility Name: COBB S2 FB Site ID: S2 Location ID: Location Descr: S2	

ANALYTE	PARAMETER CODE	NOTE	EPA METHOD	RESULT	UNITS	QUALIFIER RL	ANALYSIS ANALYST	DATE	MCL or QC Range
ETO by EPA Method TO-15 QC Batch 193874									
Bromofluorobenzene(Surrogate QC Std.)			EPA TO-15	9.9756	ppbV		KL	11/18/2021	8 to 12
Ethylene Oxide			EPA TO-15	0	ppbV	ND 0.016	KL	11/18/2021	
ETO Results by EPA Method TO-15									
Bromofluorobenzene(Surrogate QC Std.)			EPA TO-15	71.3556	ug/m3		KL	11/18/2021	57.22 to 85.84
Ethylene Oxide			EPA TO-15	0	ug/m3	ND 0.0288	KL	11/18/2021	

COMMENTS: \$ETO received in the lab at 29 in Hg.

ug/L: micrograms/liter
 mg/L: milligrams/liter
 mg/kg: milligrams/kilogram
 ug/kg: micrograms/kilogram
 ug/g: micrograms/gram
 ppm: parts per million
 ppb: parts per billion
 org/L: organisms/liter

<: less than
 MCL: Maximum Contaminant Level
 RL: Reporting Limit
 LSPC: result less than lower specification
 USPC: result greater than upper specification
 TIE: Tentatively Identified or Estimated
 VIOL: Violation (result exceeds MCL)

Laboratory Contacts:

Lab Director: Mark Tolbert 470-524-0577
 Inorganics: Kristy Hrehor 470-524-0689
 Metals: Shene Jones 470-524-0544
 Organics: Mary Bowman 470-524-0639
 GC Mass Spec: Ralph Schulz 470-524-0684
 Microbiology: Mary Bowman 470-524-0709

**GEORGIA DEPARTMENT OF NATURAL RESOURCES
ENVIRONMENTAL PROTECTION DIVISION**

5804 Peachtree Corners East, Norcross, GA 30092-3403
(678) 248-7383

LABORATORY REPORT

TO: Ga EPD Air Program EPD Air Prot Ambient Monitoring 4244 International Pkwy Ste 120 Atlanta, GA 30354	Date Collected: 10/31/2021 Time Collected: 0:00 Sample Collector: J. BRYANT Chlorination: Sample Type: Received By: HZ
	Date Received: 11/16/2021 Time Received: 9:32 AM Project: DATA STUDY Reporting Date: 12/16/2021 Received Temperature: 21.7 °C
Sample ID: AK88024 Facility Name: COVINGTON C2 Site ID: C2 Location ID: Location Descr: C2	

ANALYTE	PARAMETER CODE	NOTE	EPA METHOD	RESULT	UNITS	QUALIFIER RL	ANALYSIS ANALYST	DATE	MCL or QC Range
ETO by EPA Method TO-15 QC Batch 193808									
Bromofluorobenzene(Surrogate QC Std.)			EPA TO-15	11.0126	ppbV		KL	11/16/2021	8 to 12
Ethylene Oxide			EPA TO-15	0.1343	ppbV	0.016	KL	11/16/2021	
ETO Results by EPA Method TO-15									
Bromofluorobenzene(Surrogate QC Std.)			EPA TO-15	78.7733	ug/m3		KL	11/16/2021	57.22 to 85.84
Ethylene Oxide			EPA TO-15	0.2421	ug/m3	0.0288	KL	11/16/2021	

COMMENTS: \$ETO received in the lab at 6.5 in Hg.

ug/L: micrograms/liter
 mg/L: milligrams/liter
 mg/kg: milligrams/kilogram
 ug/kg: micrograms/kilogram
 ug/g: micrograms/gram
 ppm: parts per million
 ppb: parts per billion
 org/L: organisms/liter

<: less than
 MCL: Maximum Contaminant Level
 RL: Reporting Limit
 LSPC: result less than lower specification
 USPC: result greater than upper specification
 TIE: Tentatively Identified or Estimated
 VIOL: Violation (result exceeds MCL)

Laboratory Contacts:

Lab Director: Mark Tolbert 470-524-0577
 Inorganics: Kristy Hrehor 470-524-0689
 Metals: Shene Jones 470-524-0544
 Organics: Mary Bowman 470-524-0639
 GC Mass Spec: Ralph Schulz 470-524-0684
 Microbiology: Mary Bowman 470-524-0709

**GEORGIA DEPARTMENT OF NATURAL RESOURCES
ENVIRONMENTAL PROTECTION DIVISION**

5804 Peachtree Corners East, Norcross, GA 30092-3403
(678) 248-7383

LABORATORY REPORT

TO: Ga EPD Air Program EPD Air Prot Ambient Monitoring 4244 International Pkwy Ste 120 Atlanta, GA 30354	Date Collected: 10/28/2021 Time Collected: 0:00 Sample Collector: J. BRYANT Chlorination: Sample Type: Received By: HZ
Sample ID: AK88025 Facility Name: COVINGTON C2 FB Site ID: C2 Location ID: Location Descr: C2	Date Received: 11/16/2021 Time Received: 9:32 AM Project: DATA STUDY Reporting Date: 12/16/2021 Received Temperature: 21.6 °C

ANALYTE	PARAMETER CODE	NOTE	EPA METHOD	RESULT	UNITS	QUALIFIER RL	ANALYSIS ANALYST DATE	MCL or QC Range
ETO by EPA Method TO-15 QC Batch 193874								
Bromofluorobenzene(Surrogate QC Std.)		EPA TO-15	9.8026	ppbV		KL	11/18/2021	8 to 12
Ethylene Oxide		EPA TO-15	0	ppbV	ND	0.016	KL	11/18/2021
ETO Results by EPA Method TO-15								
Bromofluorobenzene(Surrogate QC Std.)		EPA TO-15	70.1181	ug/m3		KL	11/18/2021	57.22 to 85.84
Ethylene Oxide		EPA TO-15	0	ug/m3	ND	0.0288	KL	11/18/2021

COMMENTS: \$ETO received in the lab at 28 in Hg.

ug/L: micrograms/liter
 mg/L: milligrams/liter
 mg/kg: milligrams/kilogram
 ug/kg: micrograms/kilogram
 ug/g: micrograms/gram
 ppm: parts per million
 ppb: parts per billion
 org/L: organisms/liter

<: less than
 MCL: Maximum Contaminant Level
 RL: Reporting Limit
 LSPC: result less than lower specification
 USPC: result greater than upper specification
 TIE: Tentatively Identified or Estimated
 VIOL: Violation (result exceeds MCL)

Laboratory Contacts:

Lab Director:	Mark Tolbert	470-524-0577
Inorganics:	Kristy Hrehor	470-524-0689
Metals:	Shene Jones	470-524-0544
Organics:	Mary Bowman	470-524-0639
GC Mass Spec:	Ralph Schulz	470-524-0684
Microbiology:	Mary Bowman	470-524-0709

**GEORGIA DEPARTMENT OF NATURAL RESOURCES
ENVIRONMENTAL PROTECTION DIVISION**

5804 Peachtree Corners East, Norcross, GA 30092-3403
(678) 248-7383

LABORATORY REPORT

TO: Ga EPD Air Program EPD Air Prot Ambient Monitoring 4244 International Pkwy Ste 120 Atlanta, GA 30354	Date Collected: 10/31/2021 Time Collected: 0:00 Sample Collector: J. BRYANT Chlorination: Sample Type: Received By: HZ
Sample ID: AK88026 Facility Name: FULTON F2 Site ID: F2 Location ID: Location Descr: F2	Date Received: 11/16/2021 Time Received: 9:32 AM Project: DATA STUDY Reporting Date: 12/16/2021 Received Temperature: 19.7 °C

ANALYTE	PARAMETER CODE	NOTE	EPA METHOD	RESULT	UNITS	QUALIFIER RL	ANALYSIS ANALYST DATE	MCL or QC Range
ETO by EPA Method TO-15 QC Batch 193808								
Bromofluorobenzene(Surrogate QC Std.)			EPA TO-15	9.7653	ppbV		KL 11/16/2021	8 to 12
Ethylene Oxide			EPA TO-15	0.2212	ppbV	0.016	KL 11/16/2021	
ETO Results by EPA Method TO-15								
Bromofluorobenzene(Surrogate QC Std.)			EPA TO-15	69.8513	ug/m3		KL 11/16/2021	57.22 to 85.84
Ethylene Oxide			EPA TO-15	0.3987	ug/m3	0.0288	KL 11/16/2021	

COMMENTS: \$ETO received in the lab at 0.8 psi.

ug/L: micrograms/liter
 mg/L: milligrams/liter
 mg/kg: milligrams/kilogram
 ug/kg: micrograms/kilogram
 ug/g: micrograms/gram
 ppm: parts per million
 ppb: parts per billion
 org/L: organisms/liter

<: less than
 MCL: Maximum Contaminant Level
 RL: Reporting Limit
 LSPC: result less than lower specification
 USPC: result greater than upper specification
 TIE: Tentatively Identified or Estimated
 VIOL: Violation (result exceeds MCL)

Laboratory Contacts:

Lab Director: Mark Tolbert 470-524-0577
 Inorganics: Kristy Hrehor 470-524-0689
 Metals: Shene Jones 470-524-0544
 Organics: Mary Bowman 470-524-0639
 GC Mass Spec: Ralph Schulz 470-524-0684
 Microbiology: Mary Bowman 470-524-0709

**GEORGIA DEPARTMENT OF NATURAL RESOURCES
ENVIRONMENTAL PROTECTION DIVISION**

5804 Peachtree Corners East, Norcross, GA 30092-3403
(678) 248-7383

LABORATORY REPORT

TO: Ga EPD Air Program EPD Air Prot Ambient Monitoring 4244 International Pkwy Ste 120 Atlanta, GA 30354	Date Collected: 10/27/2021 Time Collected: 0:00 Sample Collector: J. BRYANT Chlorination: Sample Type: Received By: HZ
Sample ID: AK88027 Facility Name: FULTON F2 FB Site ID: F2 Location ID: Location Descr: F2	Date Received: 11/16/2021 Time Received: 9:32 AM Project: DATA STUDY Reporting Date: 12/16/2021 Received Temperature: 22.9 °C

ANALYTE	PARAMETER CODE	NOTE	EPA METHOD	RESULT	UNITS	QUALIFIER RL	ANALYSIS ANALYST DATE	MCL or QC Range
ETO by EPA Method TO-15 QC Batch 193874								
Bromofluorobenzene(Surrogate QC Std.)		EPA TO-15	9.9630	ppbV		KL	11/18/2021	8 to 12
Ethylene Oxide		EPA TO-15	0	ppbV	ND	0.016	KL	11/18/2021
ETO Results by EPA Method TO-15								
Bromofluorobenzene(Surrogate QC Std.)		EPA TO-15	71.2655	ug/m3		KL	11/18/2021	57.22 to 85.84
Ethylene Oxide		EPA TO-15	0	ug/m3	ND	0.0288	KL	11/18/2021

COMMENTS: \$ETO received in the lab at 28 in Hg.

ug/L: micrograms/liter
 mg/L: milligrams/liter
 mg/kg: milligrams/kilogram
 ug/kg: micrograms/kilogram
 ug/g: micrograms/gram
 ppm: parts per million
 ppb: parts per billion
 org/L: organisms/liter

<: less than
 MCL: Maximum Contaminant Level
 RL: Reporting Limit
 LSPC: result less than lower specification
 USPC: result greater than upper specification
 TIE: Tentatively Identified or Estimated
 VIOL: Violation (result exceeds MCL)

Laboratory Contacts:

Lab Director:	Mark Tolbert	470-524-0577
Inorganics:	Kristy Hrehor	470-524-0689
Metals:	Shene Jones	470-524-0544
Organics:	Mary Bowman	470-524-0639
GC Mass Spec:	Ralph Schulz	470-524-0684
Microbiology:	Mary Bowman	470-524-0709

**GEORGIA DEPARTMENT OF NATURAL RESOURCES
ENVIRONMENTAL PROTECTION DIVISION**

5804 Peachtree Corners East, Norcross, GA 30092-3403
(678) 248-7383

LABORATORY REPORT

TO: Ga EPD Air Program EPD Air Prot Ambient Monitoring 4244 International Pkwy Ste 120 Atlanta, GA 30354	Date Collected: 10/31/2021 Time Collected: 0:00 Sample Collector: H. STREET Canister Number: 114353 Canister Cleaned: 10/6/2021 Received By: HZ
Sample ID: AK88029 Facility Name: SOUTH DEKALB Site ID: 013-089-0002 Location ID: Location Descr:	Date Received: 11/2/2021 Time Received: 10:43 AM Project: AIR Reporting Date: 12/16/2021 Received Temperature: 21.9 °C

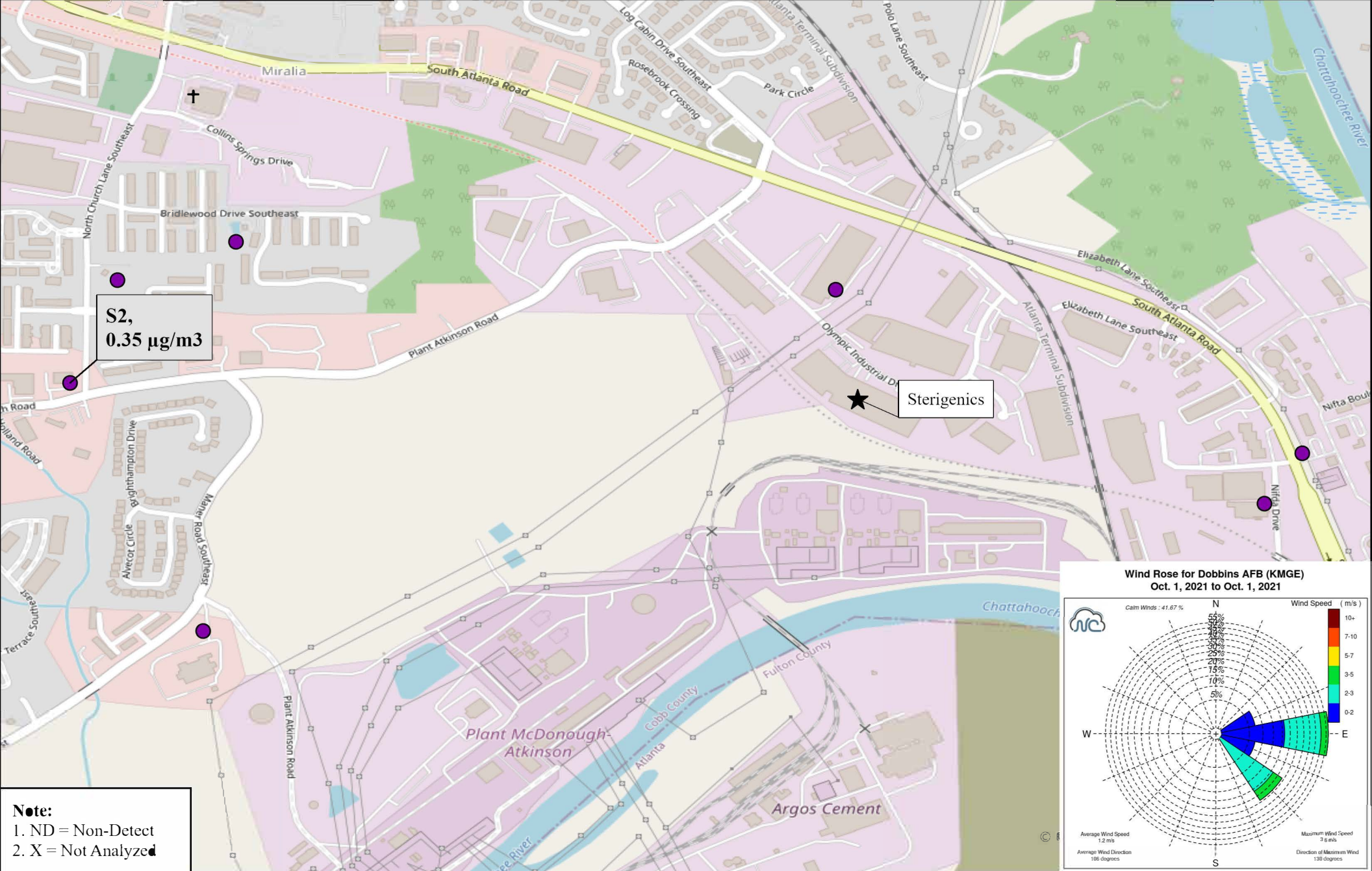
ANALYTE	PARAMETER CODE	NOTE	EPA METHOD	RESULT	UNITS	QUALIFIER RL	ANALYSIS ANALYST DATE	MCL or QC Range
ETO by EPA Method TO-15 QC Batch 193603								
Bromofluorobenzene(Surrogate QC Std.)			EPA TO-15	10.1956	ppbV		KL 11/2/2021	8 to 12
Ethylene Oxide			EPA TO-15	0.0676	ppbV	0.016	KL 11/2/2021	
ETO Results by EPA Method TO-15								
Bromofluorobenzene(Surrogate QC Std.)			EPA TO-15	72.9292	ug/m3		KL 11/2/2021	57.22 to 85.84
Ethylene Oxide			EPA TO-15	0.1219	ug/m3	0.0288	KL 11/2/2021	
COMMENTS: \$ETO received in the lab at 3 in Hg.								

ug/L: micrograms/liter
 mg/L: milligrams/liter
 mg/kg: milligrams/kilogram
 ug/kg: micrograms/kilogram
 ug/g: micrograms/gram
 ppm: parts per million
 ppb: parts per billion
 org/L: organisms/liter

<: less than
 MCL: Maximum Contaminant Level
 RL: Reporting Limit
 LSPC: result less than lower specification
 USPC: result greater than upper specification
 TIE: Tentatively Identified or Estimated
 VIOL: Violation (result exceeds MCL)

Laboratory Contacts:

Lab Director:	Mark Tolbert	470-524-0577
Inorganics:	Kristy Hrehor	470-524-0689
Metals:	Shene Jones	470-524-0544
Organics:	Mary Bowman	470-524-0639
GC Mass Spec:	Ralph Schulz	470-524-0684
Microbiology:	Mary Bowman	470-524-0709



Ethylene Oxide Sampling
Cobb County, GA

10/01/2021

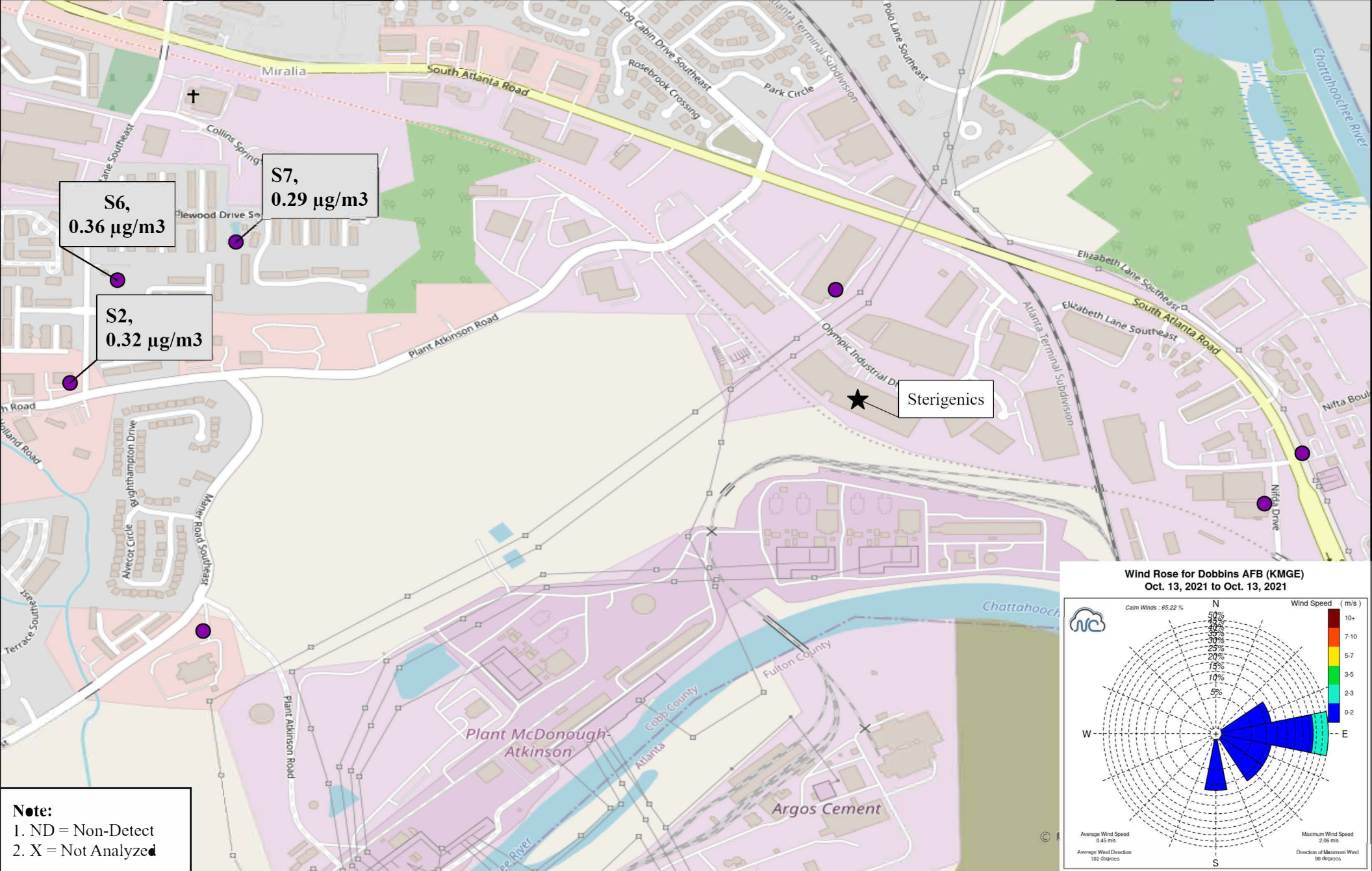
Sampled By: Georgia Environmental Protection Division

Analyzed By: GA EPD Laboratory



GEORGIA
DEPARTMENT OF NATURAL RESOURCES

ENVIRONMENTAL PROTECTION DIVISION



Ethylene Oxide Sampling
 Cobb County, GA

10/13/2021

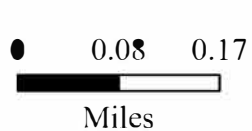
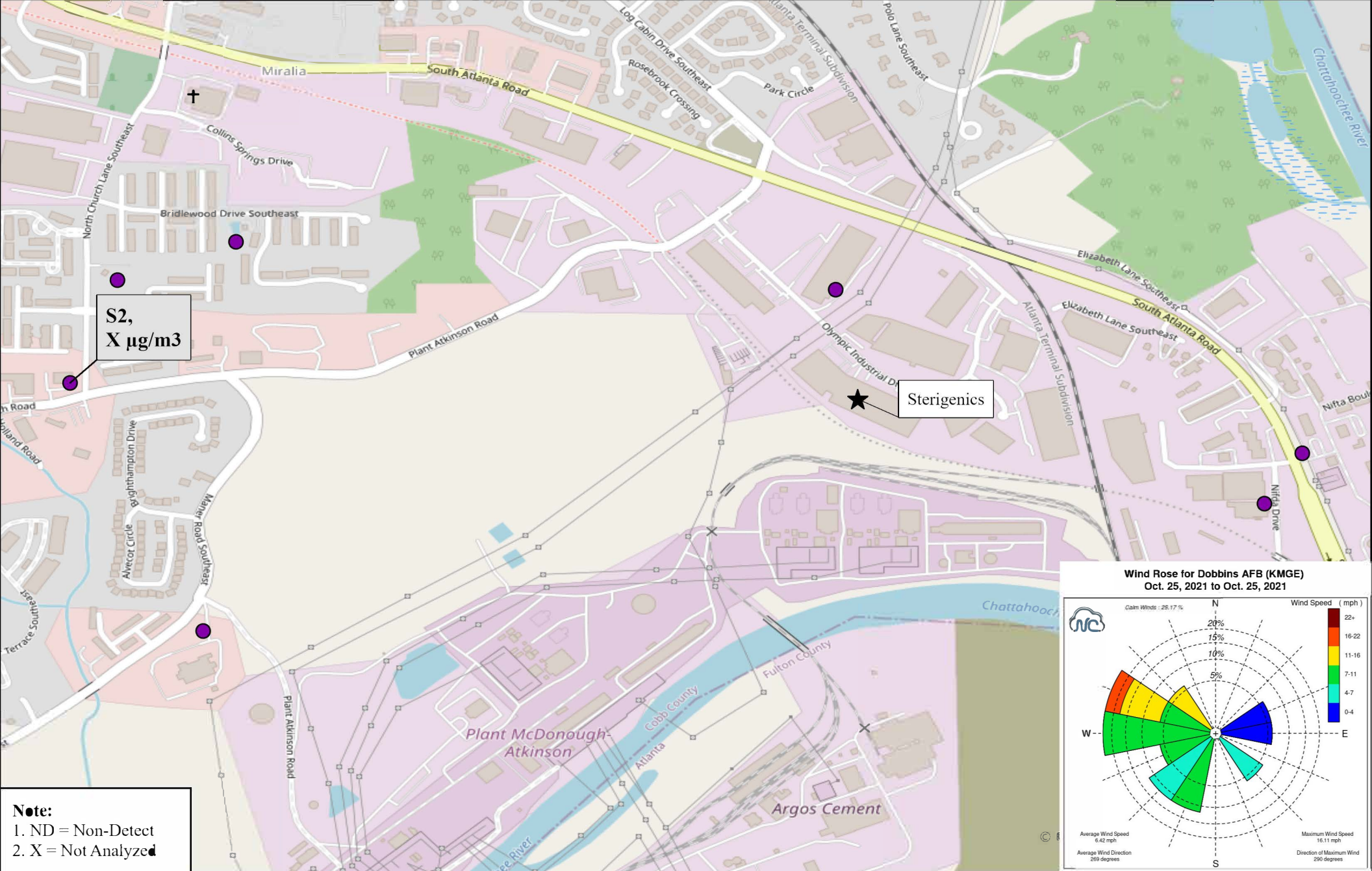
Sampled By: Georgia Environmental Protection Division

Analyzed By: GA EPD Laboratory



GEORGIA
 DEPARTMENT OF NATURAL RESOURCES

ENVIRONMENTAL PROTECTION DIVISION



Site ID, Concentration ($\mu\text{g}/\text{m}^3$)

Ethylene Oxide Sampling
 Cobb, GA

10/25/2021

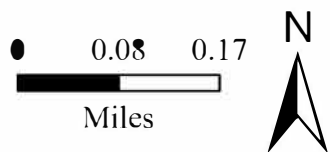
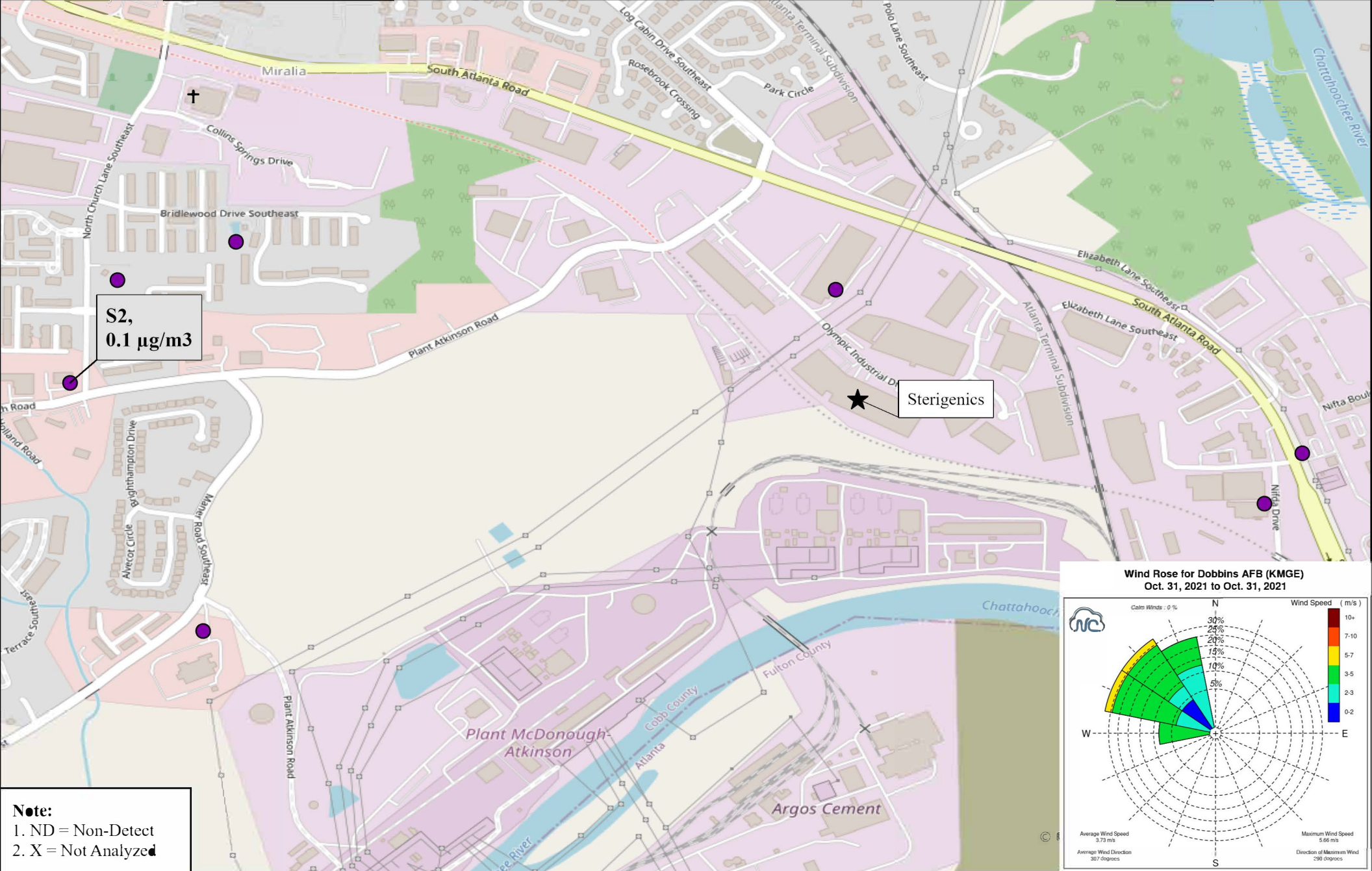
Sampled By: Georgia Environmental Protection Division

Analyzed By: GA EPD Laboratory



GEORGIA
 DEPARTMENT OF NATURAL RESOURCES

ENVIRONMENTAL PROTECTION DIVISION



Site ID, Concentration ($\mu\text{g}/\text{m}^3$)

Ethylene Oxide Sampling
Cobb County, GA

10/31/2021

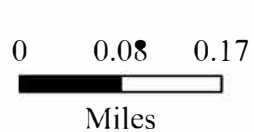
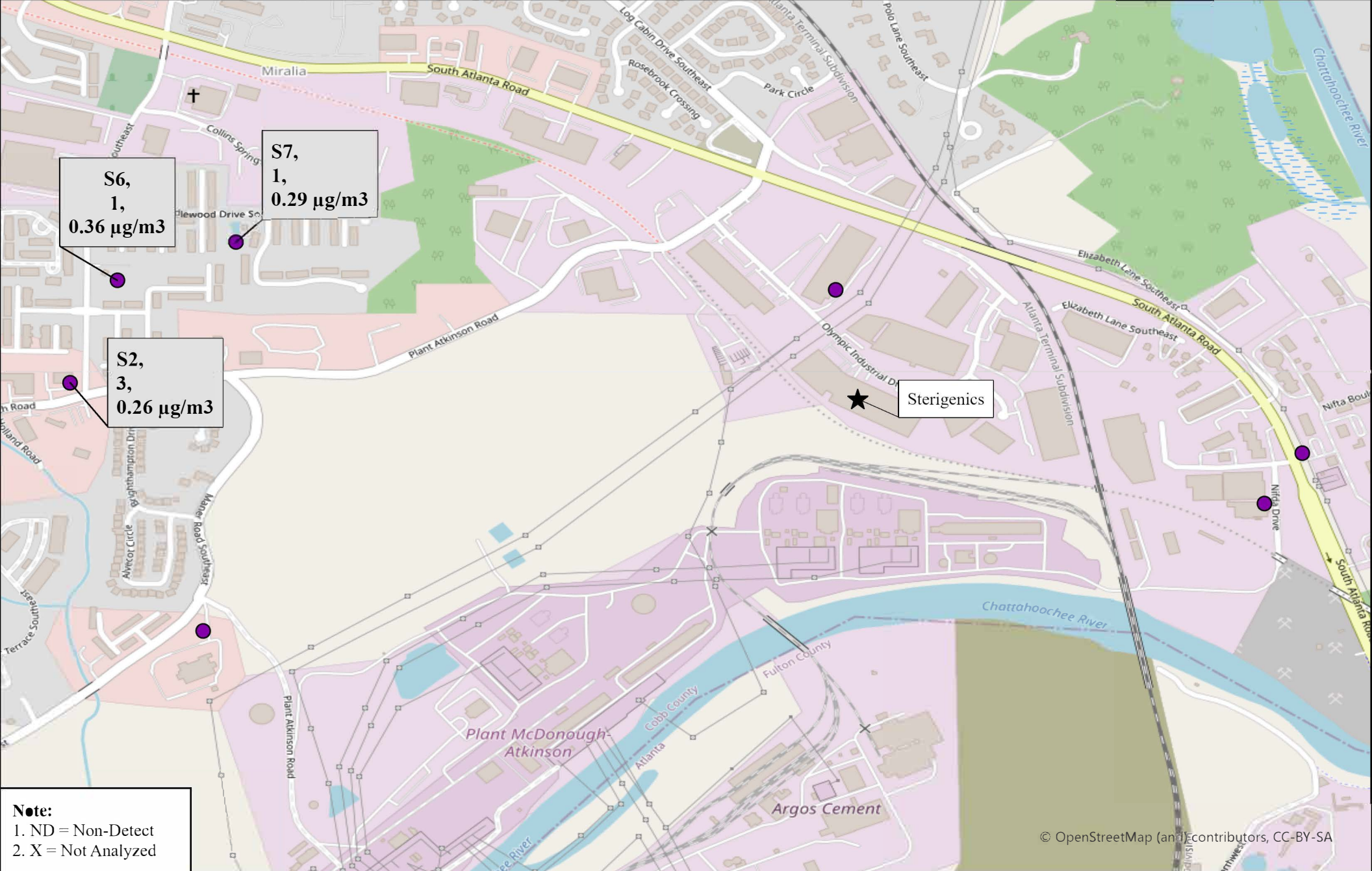
Sampled By: Georgia Environmental Protection Division

Analyzed By: GA EPD Laboratory



GEORGIA
DEPARTMENT OF NATURAL RESOURCES

ENVIRONMENTAL PROTECTION DIVISION



**Site ID, Number of Samples,
Concentration ($\mu\text{g}/\text{m}^3$)**

Ethylene Oxide Sampling
Cobb County, GA

October 2021 Site Average Values

Note: Not detectable values were included in average calculations as a value of 0.

Sampled By: Georgia Environmental Protection Division

Analyzed By: GA EPD Laboratory



GEORGIA
DEPARTMENT OF NATURAL RESOURCES

ENVIRONMENTAL PROTECTION DIVISION