



## ENVIRONMENTAL PROTECTION DIVISION

**Richard E. Dunn, Director**

**EPD Director's Office**

2 Martin Luther King, Jr. Drive  
Suite 1456, East Tower  
Atlanta, Georgia 30334  
404-656-4713

May 4, 2023

**MEMORANDUM**

To: James Boylan, Air Branch Chief *JB*

Through: DeAnna Oser, Assistant Branch Chief

From: Jaime Gore, Operations 1 Unit Manager

RE: Cobb – September 2 – September 26, 2022, Sampling Results for Ethylene Oxide

Samples of Ethylene Oxide (EtO) were collected during the period of September 2 – September 26, 2022, by the Ambient Monitoring Program in the Cobb area to characterize the EtO concentration. Each of the samples were sent to the Georgia Environmental Protection Division Laboratory (EPD) for analysis. The Qualifier code of “2” was given to samples to indicate that the collection deviated from established procedures, but the integrity of the sample was not compromised. The Qualifier code of “3” was given to samples to indicate that integrity of the field data may have been compromised. The Qualifier code of “SQ” indicates the analysis of the sample was above the method detection limit but below the practical quantification limit.

Location	Date	Qualifier	EtO Concentration ( $\mu\text{g}/\text{m}^3$ )
S2	09/02/2022	3	0.15
S2	09/14/2022	3	0.14
S2	09/26/2022	SQ, 2, 3	0.12
S2 QA	09/02/2022	3	0.24
S6 SA	09/14/2022	SQ	0.12
S7 SA	09/14/2022		0.13

If you have any questions, please let me know.

JCG

**GEORGIA DEPARTMENT OF NATURAL RESOURCES  
ENVIRONMENTAL PROTECTION DIVISION**

5804 Peachtree Corners East, Norcross, GA 30092-3403  
(678) 248-7384

**LABORATORY REPORT**

TO: Ga EPD Air Program EPD Air Prot Ambient Monitoring 4244 International Pkwy Ste 120 Atlanta, GA 30354	Date Collected: 9/2/2022 Time Collected: 0:00 Sample Collector: J. BRYANT Chlorination: Sample Type: Received By: KL
	Date Received: 9/20/2022 Time Received: 1:24 PM Project: DATA STUDY Reporting Date: 12/22/2022 Received Temperature: 18.4 °C
Sample ID: AL08742 Facility Name: COVINGTON C2 Site ID: C2 Location ID: Location Descr:	

ANALYTE	PARAMETER CODE	NOTE	EPA METHOD	RESULT	UNITS	QUALIFIER RL	ANALYST	ANALYSIS DATE	MCL or QC Range
<b>ETO by EPA Method TO-15 QC Batch 199134</b>									
Bromofluorobenzene(Surrogate QC Std.)			EPA TO-15	9.6862	ppbV		KL	9/22/2022	8 to 12
Ethylene Oxide			EPA TO-15	0.0718	ppbV	SQ 0.0232	KL	9/22/2022	
<b>ETO Results by EPA Method TO-15</b>									
Bromofluorobenzene(Surrogate QC Std.)			EPA TO-15	69.2855	ug/m3		KL	9/22/2022	57.22 to 85.84
Ethylene Oxide			EPA TO-15	0.1294	ug/m3	SQ 0.0418	KL	9/22/2022	

COMMENTS: \$ETO received in the lab at 6 in Hg.

ug/L: micrograms/liter  
 mg/L: milligrams/liter  
 mg/kg: milligrams/kilogram  
 ug/kg: micrograms/kilogram  
 ug/g: micrograms/gram  
 ppm: parts per million  
 ppb: parts per billion  
 org/L: organisms/liter

<: less than  
 MCL: Maximum Contaminant Level  
 RL: Reporting Limit  
 LSPC: result less than lower specification  
 USPC: result greater than upper specification  
 TIE: Tentatively Identified or Estimated  
 VIOL: Violation (result exceeds MCL)

**Laboratory Contacts:**

Lab Director:	Mark Tolbert	470-524-0577
Inorganics:	Carmen Pyles	470-524-0629
Metals:	Shene Jones	470-524-0544
Organics:	Mary Bowman	470-524-0639
GC Mass Spec:	Ralph Schulz	470-524-0684
Microbiology:	Mary Bowman	470-524-0709

**GEORGIA DEPARTMENT OF NATURAL RESOURCES  
ENVIRONMENTAL PROTECTION DIVISION**

5804 Peachtree Corners East, Norcross, GA 30092-3403  
(678) 248-7384

**LABORATORY REPORT**

TO: Ga EPD Air Program EPD Air Prot Ambient Monitoring 4244 International Pkwy Ste 120 Atlanta, GA 30354	Date Collected: 9/2/2022 Time Collected: 0:00 Sample Collector: J. BRYANT Chlorination: Sample Type: Received By: KL
	Date Received: 9/20/2022 Time Received: 1:24 PM Project: DATA STUDY Reporting Date: 12/22/2022 Received Temperature: 19.9 °C
Sample ID: AL08743 Facility Name: FULTON F2-QA Site ID: F2 Location ID: Location Descr:	

ANALYTE	PARAMETER CODE	NOTE	EPA METHOD	RESULT	UNITS	QUALIFIER RL	ANALYST	ANALYSIS DATE	MCL or QC Range
<b>ETO by EPA Method TO-15 QC Batch 199134</b>									
Bromofluorobenzene(Surrogate QC Std.)			EPA TO-15	9.6495	ppbV		KL	9/22/2022	8 to 12
Ethylene Oxide			EPA TO-15	0.1265	ppbV	0.0232	KL	9/22/2022	
<b>ETO Results by EPA Method TO-15</b>									
Bromofluorobenzene(Surrogate QC Std.)			EPA TO-15	69.023	ug/m3		KL	9/22/2022	57.22 to 85.84
Ethylene Oxide			EPA TO-15	0.228	ug/m3	0.0418	KL	9/22/2022	

COMMENTS: \$ETO received in the lab at 5.5 in Hg.

ug/L: micrograms/liter  
 mg/L: milligrams/liter  
 mg/kg: milligrams/kilogram  
 ug/kg: micrograms/kilogram  
 ug/g: micrograms/gram  
 ppm: parts per million  
 ppb: parts per billion  
 org/L: organisms/liter

<: less than  
 MCL: Maximum Contaminant Level  
 RL: Reporting Limit  
 LSPC: result less than lower specification  
 USPC: result greater than upper specification  
 TIE: Tentatively Identified or Estimated  
 VIOL: Violation (result exceeds MCL)

**Laboratory Contacts:**

Lab Director:	Mark Tolbert	470-524-0577
Inorganics:	Carmen Pyles	470-524-0629
Metals:	Shene Jones	470-524-0544
Organics:	Mary Bowman	470-524-0639
GC Mass Spec:	Ralph Schulz	470-524-0684
Microbiology:	Mary Bowman	470-524-0709

**GEORGIA DEPARTMENT OF NATURAL RESOURCES  
ENVIRONMENTAL PROTECTION DIVISION**

5804 Peachtree Corners East, Norcross, GA 30092-3403  
(678) 248-7384

**LABORATORY REPORT**

TO: Ga EPD Air Program EPD Air Prot Ambient Monitoring 4244 International Pkwy Ste 120 Atlanta, GA 30354	Date Collected: 9/2/2022 Time Collected: 0:00 Sample Collector: J. BRYANT Chlorination: Sample Type: Received By: KL
Sample ID: AL08744 Facility Name: COBB S2-QA Site ID: S2 Location ID: Location Descr:	Date Received: 9/20/2022 Time Received: 1:26 PM Project: DATA STUDY Reporting Date: 12/22/2022 Received Temperature: 20.6 °C

ANALYTE	PARAMETER CODE NOTE	EPA METHOD	RESULT	UNITS	QUALIFIER RL	ANALYSIS ANALYST DATE	MCL or QC Range
<b>ETO by EPA Method TO-15 QC Batch 199134</b>							
Bromofluorobenzene(Surrogate QC Std.)	EPA TO-15	9.6861	ppbV		KL	9/22/2022	8 to 12
Ethylene Oxide	EPA TO-15	0.1317	ppbV	0.0232	KL	9/22/2022	
<b>ETO Results by EPA Method TO-15</b>							
Bromofluorobenzene(Surrogate QC Std.)	EPA TO-15	69.2848	ug/m3		KL	9/22/2022	57.22 to 85.84
Ethylene Oxide	EPA TO-15	0.2374	ug/m3	0.0418	KL	9/22/2022	

COMMENTS: \$ETO received in the lab at 4 in Hg.

ug/L: micrograms/liter  
 mg/L: milligrams/liter  
 mg/kg: milligrams/kilogram  
 ug/kg: micrograms/kilogram  
 ug/g: micrograms/gram  
 ppm: parts per million  
 ppb: parts per billion  
 org/L: organisms/liter

<: less than  
 MCL: Maximum Contaminant Level  
 RL: Reporting Limit  
 LSPC: result less than lower specification  
 USPC: result greater than upper specification  
 TIE: Tentatively Identified or Estimated  
 VIOL: Violation (result exceeds MCL)

**Laboratory Contacts:**

Lab Director:	Mark Tolbert	470-524-0577
Inorganics:	Carmen Pyles	470-524-0629
Metals:	Shene Jones	470-524-0544
Organics:	Mary Bowman	470-524-0639
GC Mass Spec:	Ralph Schulz	470-524-0684
Microbiology:	Mary Bowman	470-524-0709

**GEORGIA DEPARTMENT OF NATURAL RESOURCES  
ENVIRONMENTAL PROTECTION DIVISION**

5804 Peachtree Corners East, Norcross, GA 30092-3403  
(678) 248-7384

**LABORATORY REPORT**

TO: Ga EPD Air Program EPD Air Prot Ambient Monitoring 4244 International Pkwy Ste 120 Atlanta, GA 30354	Date Collected: 9/2/2022 Time Collected: 0:00 Sample Collector: J. BRYANT Chlorination: Sample Type: Received By: KL
Sample ID: AL08745 Facility Name: FULTON F2 Site ID: F2 Location ID: Location Descr:	Date Received: 9/20/2022 Time Received: 1:26 PM Project: DATA STUDY Reporting Date: 12/22/2022 Received Temperature: 18.1 °C

ANALYTE	PARAMETER CODE	NOTE	EPA METHOD	RESULT	UNITS	QUALIFIER RL	ANALYSIS ANALYST DATE	MCL or QC Range
<b>ETO by EPA Method TO-15 QC Batch 199134</b>								
Bromofluorobenzene(Surrogate QC Std.)			EPA TO-15	9.6236	ppbV		KL 9/22/2022	8 to 12
Ethylene Oxide			EPA TO-15	0.1199	ppbV	0.0232	KL 9/22/2022	
<b>ETO Results by EPA Method TO-15</b>								
Bromofluorobenzene(Surrogate QC Std.)			EPA TO-15	68.8377	ug/m3		KL 9/22/2022	57.22 to 85.84
Ethylene Oxide			EPA TO-15	0.2161	ug/m3	0.0418	KL 9/22/2022	

COMMENTS: \$ETO received in the lab at 6 in Hg.

ug/L: micrograms/liter  
 mg/L: milligrams/liter  
 mg/kg: milligrams/kilogram  
 ug/kg: micrograms/kilogram  
 ug/g: micrograms/gram  
 ppm: parts per million  
 ppb: parts per billion  
 org/L: organisms/liter

<: less than  
 MCL: Maximum Contaminant Level  
 RL: Reporting Limit  
 LSPC: result less than lower specification  
 USPC: result greater than upper specification  
 TIE: Tentatively Identified or Estimated  
 VIOL: Violation (result exceeds MCL)

**Laboratory Contacts:**

Lab Director:	Mark Tolbert	470-524-0577
Inorganics:	Carmen Pyles	470-524-0629
Metals:	Shene Jones	470-524-0544
Organics:	Mary Bowman	470-524-0639
GC Mass Spec:	Ralph Schulz	470-524-0684
Microbiology:	Mary Bowman	470-524-0709

**GEORGIA DEPARTMENT OF NATURAL RESOURCES  
ENVIRONMENTAL PROTECTION DIVISION**

5804 Peachtree Corners East, Norcross, GA 30092-3403  
(678) 248-7384

**LABORATORY REPORT**

TO: Ga EPD Air Program EPD Air Prot Ambient Monitoring 4244 International Pkwy Ste 120 Atlanta, GA 30354	Date Collected: 9/2/2022 Time Collected: 0:00 Sample Collector: J. BRYANT Chlorination: Sample Type: Received By: KL
Sample ID: AL08747 Facility Name: COVINGTON C2- QA Site ID: C2 Location ID: Location Descr:	Date Received: 9/20/2022 Time Received: 1:26 PM Project: DATA STUDY Reporting Date: 12/22/2022 Received Temperature: 17.9 °C

ANALYTE	PARAMETER CODE NOTE	EPA METHOD	RESULT	UNITS	QUALIFIER RL	ANALYSIS ANALYST DATE	MCL or QC Range
<b>ETO by EPA Method TO-15 QC Batch 199134</b>							
Bromofluorobenzene(Surrogate QC Std.)	EPA TO-15	9.7147	ppbV		KL	9/22/2022	8 to 12
Ethylene Oxide	EPA TO-15	0.0792	ppbV	0.0232	KL	9/22/2022	
<b>ETO Results by EPA Method TO-15</b>							
Bromofluorobenzene(Surrogate QC Std.)	EPA TO-15	69.4894	ug/m3		KL	9/22/2022	57.22 to 85.84
Ethylene Oxide	EPA TO-15	0.1428	ug/m3	0.0418	KL	9/22/2022	

COMMENTS: \$ETO received in the lab at 7 in Hg.

ug/L: micrograms/liter  
 mg/L: milligrams/liter  
 mg/kg: milligrams/kilogram  
 ug/kg: micrograms/kilogram  
 ug/g: micrograms/gram  
 ppm: parts per million  
 ppb: parts per billion  
 org/L: organisms/liter

<: less than  
 MCL: Maximum Contaminant Level  
 RL: Reporting Limit  
 LSPC: result less than lower specification  
 USPC: result greater than upper specification  
 TIE: Tentatively Identified or Estimated  
 VIOL: Violation (result exceeds MCL)

**Laboratory Contacts:**

Lab Director:	Mark Tolbert	470-524-0577
Inorganics:	Carmen Pyles	470-524-0629
Metals:	Shene Jones	470-524-0544
Organics:	Mary Bowman	470-524-0639
GC Mass Spec:	Ralph Schulz	470-524-0684
Microbiology:	Mary Bowman	470-524-0709

**GEORGIA DEPARTMENT OF NATURAL RESOURCES  
ENVIRONMENTAL PROTECTION DIVISION**

5804 Peachtree Corners East, Norcross, GA 30092-3403  
(678) 248-7384

**LABORATORY REPORT**

TO: Ga EPD Air Program EPD Air Prot Ambient Monitoring 4244 International Pkwy Ste 120 Atlanta, GA 30354	Date Collected: 9/2/2022 Time Collected: 0:00 Sample Collector: J. BRYANT Chlorination: Sample Type: Received By: KL
Sample ID: AL08748 Facility Name: COBB S2 Site ID: S2 Location ID: Location Descr:	Date Received: 9/20/2022 Time Received: 1:26 PM Project: DATA STUDY Reporting Date: 12/22/2022 Received Temperature: 20.0 °C

ANALYTE	PARAMETER CODE NOTE	EPA METHOD	RESULT	UNITS	QUALIFIER RL	ANALYSIS ANALYST DATE	MCL or QC Range
<b>ETO by EPA Method TO-15 QC Batch 199134</b>							
Bromofluorobenzene(Surrogate QC Std.)	EPA TO-15	9.9617	ppbV		KL	9/22/2022	8 to 12
Ethylene Oxide	EPA TO-15	0.0856	ppbV	0.0232	KL	9/22/2022	
<b>ETO Results by EPA Method TO-15</b>							
Bromofluorobenzene(Surrogate QC Std.)	EPA TO-15	71.2562	ug/m3		KL	9/22/2022	57.22 to 85.84
Ethylene Oxide	EPA TO-15	0.1543	ug/m3	0.0418	KL	9/22/2022	

COMMENTS: \$ETO received in the lab at 4 in Hg.

ug/L: micrograms/liter  
 mg/L: milligrams/liter  
 mg/kg: milligrams/kilogram  
 ug/kg: micrograms/kilogram  
 ug/g: micrograms/gram  
 ppm: parts per million  
 ppb: parts per billion  
 org/L: organisms/liter

<: less than  
 MCL: Maximum Contaminant Level  
 RL: Reporting Limit  
 LSPC: result less than lower specification  
 USPC: result greater than upper specification  
 TIE: Tentatively Identified or Estimated  
 VIOL: Violation (result exceeds MCL)

**Laboratory Contacts:**

Lab Director:	Mark Tolbert	470-524-0577
Inorganics:	Carmen Pyles	470-524-0629
Metals:	Shene Jones	470-524-0544
Organics:	Mary Bowman	470-524-0639
GC Mass Spec:	Ralph Schulz	470-524-0684
Microbiology:	Mary Bowman	470-524-0709

**GEORGIA DEPARTMENT OF NATURAL RESOURCES  
ENVIRONMENTAL PROTECTION DIVISION**

5804 Peachtree Corners East, Norcross, GA 30092-3403  
(678) 248-7384

**LABORATORY REPORT**

TO: Ga EPD Air Program EPD Air Prot Ambient Monitoring 4244 International Pkwy Ste 120 Atlanta, GA 30354	Date Collected: 9/2/2022 Time Collected: 0:00 Sample Collector: H. STREET Canister Number: 110325 Canister Cleaned: 8/22/2022 Received By: KL
	Date Received: 9/7/2022 Time Received: 10:59 AM Project: AIR Reporting Date: 12/22/2022 Received Temperature: 23.5 °C
Sample ID: AL10703 Facility Name: SOUTH DEKALB QA Site ID: 013-089-0002 Location ID: QCCAN Location Descr:	

ANALYTE	PARAMETER CODE	NOTE	EPA METHOD	RESULT	UNITS	QUALIFIER RL	ANALYSIS ANALYST	DATE	MCL or QC Range
<b>ETO by EPA Method TO-15 QC Batch 198653</b>									
Bromofluorobenzene(Surrogate QC Std.)			EPA TO-15	9.0897	ppbV		KL	9/7/2022	8 to 12
Ethylene Oxide			EPA TO-15	0.0672	ppbV	SQ 0.0232	KL	9/7/2022	
<b>ETO Results by EPA Method TO-15</b>									
Bromofluorobenzene(Surrogate QC Std.)			EPA TO-15	65.0187	ug/m3		KL	9/7/2022	57.22 to 85.84
Ethylene Oxide			EPA TO-15	0.1211	ug/m3	SQ 0.0418	KL	9/7/2022	
<b>ETO NATTS QA Replicate Precision</b>									
Ethylene Oxide			EPA TO-15	0.741	%RPD		KL	9/7/2022	25
<b>ETO QA Replicate Result</b>									
Bromofluorobenzene(Surrogate QC Std.)			EPA TO-15	9.1655	ppbV		KL	9/7/2022	8 to 12
Ethylene Oxide			EPA TO-15	0.0677	ppbV	SQ 0.0232	KL	9/7/2022	

COMMENTS: \$ETO received in the lab at 4.6 psi.

ug/L: micrograms/liter  
 mg/L: milligrams/liter  
 mg/kg: milligrams/kilogram  
 ug/kg: micrograms/kilogram  
 ug/g: micrograms/gram  
 ppm: parts per million  
 ppb: parts per billion  
 org/L: organisms/liter

<: less than  
 MCL: Maximum Contaminant Level  
 RL: Reporting Limit  
 LSPC: result less than lower specification  
 USPC: result greater than upper specification  
 TIE: Tentatively Identified or Estimated  
 VIOL: Violation (result exceeds MCL)

**Laboratory Contacts:**

Lab Director:	Mark Tolbert	470-524-0577
Inorganics:	Carmen Pyles	470-524-0629
Metals:	Shene Jones	470-524-0544
Organics:	Mary Bowman	470-524-0639
GC Mass Spec:	Ralph Schulz	470-524-0684
Microbiology:	Mary Bowman	470-524-0709

**GEORGIA DEPARTMENT OF NATURAL RESOURCES  
ENVIRONMENTAL PROTECTION DIVISION**

5804 Peachtree Corners East, Norcross, GA 30092-3403  
(678) 248-7384

**LABORATORY REPORT**

TO: Ga EPD Air Program EPD Air Prot Ambient Monitoring 4244 International Pkwy Ste 120 Atlanta, GA 30354	Date Collected: 9/14/2022 Time Collected: 0:00 Sample Collector: J. BRYANT Chlorination: Sample Type: Received By: KL
Sample ID: AL10719 Facility Name: COVINGTON C3-SA Site ID: C3-SA Location ID: Location Descr:	Date Received: 9/29/2022 Time Received: 11:36 AM Project: Reporting Date: 12/22/2022 Received Temperature: 23.9 °C

ANALYTE	PARAMETER CODE	NOTE	EPA METHOD	RESULT	QUALIFIER UNITS	RL	ANALYSIS ANALYST DATE	MCL or QC Range
<b>ETO by EPA Method TO-15 QC Batch 199340</b>								
Bromofluorobenzene(Surrogate QC Std.)			EPA TO-15	9.7797	ppbV		KL 9/30/2022	8 to 12
Ethylene Oxide			EPA TO-15	0.0815	ppbV	0.0232	KL 9/30/2022	
<b>ETO Results by EPA Method TO-15</b>								
Bromofluorobenzene(Surrogate QC Std.)			EPA TO-15	69.9543	ug/m3		KL 9/30/2022	57.22 to 85.84
Ethylene Oxide			EPA TO-15	0.1469	ug/m3	0.0418	KL 9/30/2022	

COMMENTS: \$ETO received in the lab at 7 in Hg.

ug/L: micrograms/liter  
 mg/L: milligrams/liter  
 mg/kg: milligrams/kilogram  
 ug/kg: micrograms/kilogram  
 ug/g: micrograms/gram  
 ppm: parts per million  
 ppb: parts per billion  
 org/L: organisms/liter

<: less than  
 MCL: Maximum Contaminant Level  
 RL: Reporting Limit  
 LSPC: result less than lower specification  
 USPC: result greater than upper specification  
 TIE: Tentatively Identified or Estimated  
 VIOL: Violation (result exceeds MCL)

**Laboratory Contacts:**

Lab Director: Mark Tolbert 470-524-0577  
 Inorganics: Carmen Pyles 470-524-0629  
 Metals: Shene Jones 470-524-0544  
 Organics: Mary Bowman 470-524-0639  
 GC Mass Spec: Ralph Schulz 470-524-0684  
 Microbiology: Mary Bowman 470-524-0709

**GEORGIA DEPARTMENT OF NATURAL RESOURCES  
ENVIRONMENTAL PROTECTION DIVISION**

5804 Peachtree Corners East, Norcross, GA 30092-3403  
(678) 248-7384

**LABORATORY REPORT**

TO: Ga EPD Air Program EPD Air Prot Ambient Monitoring 4244 International Pkwy Ste 120 Atlanta, GA 30354	Date Collected: 9/14/2022 Time Collected: 0:00 Sample Collector: J. BRYANT Chlorination: Sample Type: Received By: KL
Sample ID: AL10720 Facility Name: COBB S6-SA Site ID: S6-SA Location ID: Location Descr:	Date Received: 9/29/2022 Time Received: 11:35 AM Project: Reporting Date: 12/22/2022 Received Temperature: 19.9 °C

ANALYTE	PARAMETER CODE NOTE	EPA METHOD	RESULT	UNITS	QUALIFIER RL	ANALYSIS ANALYST DATE	MCL or QC Range
<b>ETO by EPA Method TO-15 QC Batch 199340</b>							
Bromofluorobenzene(Surrogate QC Std.)	EPA TO-15	10.1284	ppbV		KL	9/30/2022	8 to 12
Ethylene Oxide	EPA TO-15	0.0685	ppbV	SQ	0.0232	KL	9/30/2022
<b>ETO Results by EPA Method TO-15</b>							
Bromofluorobenzene(Surrogate QC Std.)	EPA TO-15	72.4486	ug/m3		KL	9/30/2022	57.22 to 85.84
Ethylene Oxide	EPA TO-15	0.1235	ug/m3	SQ	0.0418	KL	9/30/2022

COMMENTS: \$ETO received in the lab at 4 in Hg.

ug/L: micrograms/liter  
 mg/L: milligrams/liter  
 mg/kg: milligrams/kilogram  
 ug/kg: micrograms/kilogram  
 ug/g: micrograms/gram  
 ppm: parts per million  
 ppb: parts per billion  
 org/L: organisms/liter

<: less than  
 MCL: Maximum Contaminant Level  
 RL: Reporting Limit  
 LSPC: result less than lower specification  
 USPC: result greater than upper specification  
 TIE: Tentatively Identified or Estimated  
 VIOL: Violation (result exceeds MCL)

**Laboratory Contacts:**

Lab Director:	Mark Tolbert	470-524-0577
Inorganics:	Carmen Pyles	470-524-0629
Metals:	Shene Jones	470-524-0544
Organics:	Mary Bowman	470-524-0639
GC Mass Spec:	Ralph Schulz	470-524-0684
Microbiology:	Mary Bowman	470-524-0709

**GEORGIA DEPARTMENT OF NATURAL RESOURCES  
ENVIRONMENTAL PROTECTION DIVISION**

5804 Peachtree Corners East, Norcross, GA 30092-3403  
(678) 248-7384

**LABORATORY REPORT**

TO: Ga EPD Air Program EPD Air Prot Ambient Monitoring 4244 International Pkwy Ste 120 Atlanta, GA 30354	Date Collected: 9/14/2022 Time Collected: 0:00 Sample Collector: J. BRYANT Chlorination: Sample Type: Received By: KL
Sample ID: AL10721 Facility Name: COVINGTON C2 Site ID: C2 Location ID: Location Descr:	Date Received: 9/29/2022 Time Received: 11:36 AM Project: Reporting Date: 12/22/2022 Received Temperature: 23.5 °C

ANALYTE	PARAMETER CODE	NOTE	EPA METHOD	RESULT	UNITS	QUALIFIER RL	ANALYSIS ANALYST DATE	MCL or QC Range
<b>ETO by EPA Method TO-15 QC Batch 199340</b>								
Bromofluorobenzene(Surrogate QC Std.)			EPA TO-15	9.9467	ppbV		KL 9/30/2022	8 to 12
Ethylene Oxide			EPA TO-15	0.0571	ppbV	SQ 0.0232	KL 9/30/2022	
<b>ETO Results by EPA Method TO-15</b>								
Bromofluorobenzene(Surrogate QC Std.)			EPA TO-15	71.1489	ug/m3		KL 9/30/2022	57.22 to 85.84
Ethylene Oxide			EPA TO-15	0.1029	ug/m3	SQ 0.0418	KL 9/30/2022	

COMMENTS: \$ETO received in the lab at 4 in Hg.

ug/L: micrograms/liter  
 mg/L: milligrams/liter  
 mg/kg: milligrams/kilogram  
 ug/kg: micrograms/kilogram  
 ug/g: micrograms/gram  
 ppm: parts per million  
 ppb: parts per billion  
 org/L: organisms/liter

<: less than  
 MCL: Maximum Contaminant Level  
 RL: Reporting Limit  
 LSPC: result less than lower specification  
 USPC: result greater than upper specification  
 TIE: Tentatively Identified or Estimated  
 VIOL: Violation (result exceeds MCL)

**Laboratory Contacts:**

Lab Director: Mark Tolbert 470-524-0577  
 Inorganics: Carmen Pyles 470-524-0629  
 Metals: Shene Jones 470-524-0544  
 Organics: Mary Bowman 470-524-0639  
 GC Mass Spec: Ralph Schulz 470-524-0684  
 Microbiology: Mary Bowman 470-524-0709

**GEORGIA DEPARTMENT OF NATURAL RESOURCES  
ENVIRONMENTAL PROTECTION DIVISION**

5804 Peachtree Corners East, Norcross, GA 30092-3403  
(678) 248-7384

**LABORATORY REPORT**

TO: Ga EPD Air Program EPD Air Prot Ambient Monitoring 4244 International Pkwy Ste 120 Atlanta, GA 30354	Date Collected: 9/8/2022 Time Collected: 0:00 Sample Collector: H. STREET Canister Number: 114385 Canister Cleaned: 8/22/2022 Received By: KL
Sample ID: AL10722 Facility Name: SOUTH DEKALB Site ID: 013-089-0002 Location ID: Location Descr:	Date Received: 9/12/2022 Time Received: 10:04 AM Project: AIR Reporting Date: 12/22/2022 Received Temperature: 20.5 °C

ANALYTE	PARAMETER CODE	NOTE	EPA METHOD	RESULT	UNITS	QUALIFIER RL	ANALYSIS ANALYST DATE	MCL or QC Range
<b>ETO by EPA Method TO-15 QC Batch 198885</b>								
Bromofluorobenzene(Surrogate QC Std.)			EPA TO-15	9.3855	ppbV		KL 9/14/2022	8 to 12
Ethylene Oxide			EPA TO-15	0.0567	ppbV	SQ 0.0232	KL 9/14/2022	
<b>ETO Results by EPA Method TO-15</b>								
Bromofluorobenzene(Surrogate QC Std.)			EPA TO-15	67.1346	ug/m3		KL 9/14/2022	57.22 to 85.84
Ethylene Oxide			EPA TO-15	0.1022	ug/m3	SQ 0.0418	KL 9/14/2022	

COMMENTS: \$ETO received in the lab at 5.8 psi.

ug/L: micrograms/liter  
 mg/L: milligrams/liter  
 mg/kg: milligrams/kilogram  
 ug/kg: micrograms/kilogram  
 ug/g: micrograms/gram  
 ppm: parts per million  
 ppb: parts per billion  
 org/L: organisms/liter

<: less than  
 MCL: Maximum Contaminant Level  
 RL: Reporting Limit  
 LSPC: result less than lower specification  
 USPC: result greater than upper specification  
 TIE: Tentatively Identified or Estimated  
 VIOL: Violation (result exceeds MCL)

**Laboratory Contacts:**

Lab Director:	Mark Tolbert	470-524-0577
Inorganics:	Carmen Pyles	470-524-0629
Metals:	Shene Jones	470-524-0544
Organics:	Mary Bowman	470-524-0639
GC Mass Spec:	Ralph Schulz	470-524-0684
Microbiology:	Mary Bowman	470-524-0709

**GEORGIA DEPARTMENT OF NATURAL RESOURCES  
ENVIRONMENTAL PROTECTION DIVISION**

5804 Peachtree Corners East, Norcross, GA 30092-3403  
(678) 248-7384

**LABORATORY REPORT**

TO: Ga EPD Air Program EPD Air Prot Ambient Monitoring 4244 International Pkwy Ste 120 Atlanta, GA 30354	Date Collected: 9/2/2022 Time Collected: 0:00 Sample Collector: C. KNOX Chlorination: Sample Type: Received By: KL
	Date Received: 9/12/2022 Time Received: 1:30 PM Project: DATA STUDY Reporting Date: 12/22/2022 Received Temperature: 20.5 °C
Sample ID: AL10723 Facility Name: GENERAL COFFEE Site ID: 013-069-0002 Location ID: Location Descr:	

ANALYTE	PARAMETER CODE	NOTE	EPA METHOD	RESULT	UNITS	QUALIFIER RL	ANALYSIS ANALYST	DATE	MCL or QC Range
<b>ETO by EPA Method TO-15 QC Batch 198885</b>									
Bromofluorobenzene(Surrogate QC Std.)			EPA TO-15	9.1325	ppbV		KL	9/14/2022	8 to 12
Ethylene Oxide			EPA TO-15	0.0370	ppbV	SQ 2	0.0232	KL	9/14/2022
<b>ETO Results by EPA Method TO-15</b>									
Bromofluorobenzene(Surrogate QC Std.)			EPA TO-15	65.3249	ug/m3		KL	9/14/2022	57.22 to 85.84
Ethylene Oxide			EPA TO-15	0.0667	ug/m3	SQ 2	0.0418	KL	9/14/2022

COMMENTS: \$ETO received in the lab at 20.2 psi. Pressure difference of >0.5 psi between receipt from field and receipt in lab.

ug/L: micrograms/liter mg/L: milligrams/liter mg/kg: milligrams/kilogram ug/kg: micrograms/kilogram ug/g: micrograms/gram ppm: parts per million ppb: parts per billion org/L: organisms/liter	<: less than MCL: Maximum Contaminant Level RL: Reporting Limit LSPC: result less than lower specification USPC: result greater than upper specification TIE: Tentatively Identified or Estimated VIOL: Violation (result exceeds MCL)	<b>Laboratory Contacts:</b> Lab Director: Mark Tolbert 470-524-0577 Inorganics: Carmen Pyles 470-524-0629 Metals: Shene Jones 470-524-0544 Organics: Mary Bowman 470-524-0639 GC Mass Spec: Ralph Schulz 470-524-0684 Microbiology: Mary Bowman 470-524-0709
---	--	--

**GEORGIA DEPARTMENT OF NATURAL RESOURCES  
ENVIRONMENTAL PROTECTION DIVISION**

5804 Peachtree Corners East, Norcross, GA 30092-3403  
(678) 248-7384

**LABORATORY REPORT**

TO: Ga EPD Air Program EPD Air Prot Ambient Monitoring 4244 International Pkwy Ste 120 Atlanta, GA 30354	Date Collected: 9/14/2022 Time Collected: 0:00 Sample Collector: J. BRYANT Chlorination: Sample Type: Received By: KL
Sample ID: AL10724 Facility Name: COBB S2 Site ID: S2 Location ID: Location Descr:	Date Received: 9/29/2022 Time Received: 11:35 AM Project: Reporting Date: 12/22/2022 Received Temperature: 21.6 °C

ANALYTE	PARAMETER CODE	NOTE	EPA METHOD	RESULT	UNITS	QUALIFIER RL	ANALYSIS ANALYST DATE	MCL or QC Range
<b>ETO by EPA Method TO-15 QC Batch 199340</b>								
Bromofluorobenzene(Surrogate QC Std.)			EPA TO-15	9.8618	ppbV		KL 9/30/2022	8 to 12
Ethylene Oxide			EPA TO-15	0.0759	ppbV	0.0232	KL 9/30/2022	
<b>ETO Results by EPA Method TO-15</b>								
Bromofluorobenzene(Surrogate QC Std.)			EPA TO-15	70.5416	ug/m3		KL 9/30/2022	57.22 to 85.84
Ethylene Oxide			EPA TO-15	0.1368	ug/m3	0.0418	KL 9/30/2022	

COMMENTS: \$ETO received in the lab at 5 in Hg.

ug/L: micrograms/liter  
 mg/L: milligrams/liter  
 mg/kg: milligrams/kilogram  
 ug/kg: micrograms/kilogram  
 ug/g: micrograms/gram  
 ppm: parts per million  
 ppb: parts per billion  
 org/L: organisms/liter

<: less than  
 MCL: Maximum Contaminant Level  
 RL: Reporting Limit  
 LSPC: result less than lower specification  
 USPC: result greater than upper specification  
 TIE: Tentatively Identified or Estimated  
 VIOL: Violation (result exceeds MCL)

**Laboratory Contacts:**

Lab Director:	Mark Tolbert	470-524-0577
Inorganics:	Carmen Pyles	470-524-0629
Metals:	Shene Jones	470-524-0544
Organics:	Mary Bowman	470-524-0639
GC Mass Spec:	Ralph Schulz	470-524-0684
Microbiology:	Mary Bowman	470-524-0709

**GEORGIA DEPARTMENT OF NATURAL RESOURCES  
ENVIRONMENTAL PROTECTION DIVISION**

5804 Peachtree Corners East, Norcross, GA 30092-3403  
(678) 248-7384

**LABORATORY REPORT**

TO: Ga EPD Air Program EPD Air Prot Ambient Monitoring 4244 International Pkwy Ste 120 Atlanta, GA 30354	Date Collected: 9/14/2022 Time Collected: 0:00 Sample Collector: J. BRYANT Chlorination: Sample Type: Received By: KL
	Date Received: 9/29/2022 Time Received: 11:35 AM Project: Reporting Date: 12/22/2022 Received Temperature: 24.5 °C
Sample ID: AL10725 Facility Name: COBB S7-SA Site ID: S7-SA Location ID: Location Descr:	

ANALYTE	PARAMETER CODE	NOTE	EPA METHOD	RESULT	UNITS	QUALIFIER RL	ANALYSIS ANALYST	DATE	MCL or QC Range
<b>ETO by EPA Method TO-15 QC Batch 199340</b>									
Bromofluorobenzene(Surrogate QC Std.)			EPA TO-15	10.0628	ppbV		KL	9/30/2022	8 to 12
Ethylene Oxide			EPA TO-15	0.0740	ppbV	0.0232	KL	9/30/2022	
<b>ETO Results by EPA Method TO-15</b>									
Bromofluorobenzene(Surrogate QC Std.)			EPA TO-15	71.9793	ug/m3		KL	9/30/2022	57.22 to 85.84
Ethylene Oxide			EPA TO-15	0.1334	ug/m3	0.0418	KL	9/30/2022	

COMMENTS: \$ETO received in the lab at 5 in Hg.

ug/L: micrograms/liter  
 mg/L: milligrams/liter  
 mg/kg: milligrams/kilogram  
 ug/kg: micrograms/kilogram  
 ug/g: micrograms/gram  
 ppm: parts per million  
 ppb: parts per billion  
 org/L: organisms/liter

<: less than  
 MCL: Maximum Contaminant Level  
 RL: Reporting Limit  
 LSPC: result less than lower specification  
 USPC: result greater than upper specification  
 TIE: Tentatively Identified or Estimated  
 VIOL: Violation (result exceeds MCL)

**Laboratory Contacts:**

Lab Director:	Mark Tolbert	470-524-0577
Inorganics:	Carmen Pyles	470-524-0629
Metals:	Shene Jones	470-524-0544
Organics:	Mary Bowman	470-524-0639
GC Mass Spec:	Ralph Schulz	470-524-0684
Microbiology:	Mary Bowman	470-524-0709

**GEORGIA DEPARTMENT OF NATURAL RESOURCES  
ENVIRONMENTAL PROTECTION DIVISION**

5804 Peachtree Corners East, Norcross, GA 30092-3403  
(678) 248-7384

**LABORATORY REPORT**

TO: Ga EPD Air Program EPD Air Prot Ambient Monitoring 4244 International Pkwy Ste 120 Atlanta, GA 30354	Date Collected: 9/2/2022 Time Collected: 0:00 Sample Collector: H. STREET Canister Number: 114337 Canister Cleaned: 8/22/2022 Received By: KL
	Date Received: 9/7/2022 Time Received: 10:59 AM Project: AIR Reporting Date: 12/22/2022 Received Temperature: 24.5 °C
Sample ID: AL10726 Facility Name: SOUTH DEKALB Site ID: 013-089-0002 Location ID: QCCAN Location Descr:	

ANALYTE	PARAMETER CODE	NOTE	EPA METHOD	RESULT	UNITS	QUALIFIER RL	ANALYSIS ANALYST	DATE	MCL or QC Range
<b>ETO by EPA Method TO-15 QC Batch 198653</b>									
Bromofluorobenzene(Surrogate QC Std.)			EPA TO-15	9.2729	ppbV		KL	9/7/2022	8 to 12
Ethylene Oxide			EPA TO-15	0.0552	ppbV	SQ 0.0232	KL	9/7/2022	
<b>ETO Results by EPA Method TO-15</b>									
Bromofluorobenzene(Surrogate QC Std.)			EPA TO-15	66.3292	ug/m3		KL	9/7/2022	57.22 to 85.84
Ethylene Oxide			EPA TO-15	0.0995	ug/m3	SQ 0.0418	KL	9/7/2022	

COMMENTS: \$ETO received in the lab at 5 psi.

ug/L: micrograms/liter  
 mg/L: milligrams/liter  
 mg/kg: milligrams/kilogram  
 ug/kg: micrograms/kilogram  
 ug/g: micrograms/gram  
 ppm: parts per million  
 ppb: parts per billion  
 org/L: organisms/liter

<: less than  
 MCL: Maximum Contaminant Level  
 RL: Reporting Limit  
 LSPC: result less than lower specification  
 USPC: result greater than upper specification  
 TIE: Tentatively Identified or Estimated  
 VIOL: Violation (result exceeds MCL)

**Laboratory Contacts:**

Lab Director:	Mark Tolbert	470-524-0577
Inorganics:	Carmen Pyles	470-524-0629
Metals:	Shene Jones	470-524-0544
Organics:	Mary Bowman	470-524-0639
GC Mass Spec:	Ralph Schulz	470-524-0684
Microbiology:	Mary Bowman	470-524-0709

**GEORGIA DEPARTMENT OF NATURAL RESOURCES  
ENVIRONMENTAL PROTECTION DIVISION**

5804 Peachtree Corners East, Norcross, GA 30092-3403  
(678) 248-7384

**LABORATORY REPORT**

TO: Ga EPD Air Program EPD Air Prot Ambient Monitoring 4244 International Pkwy Ste 120 Atlanta, GA 30354	Date Collected: 9/14/2022 Time Collected: 0:00 Sample Collector: J. BRYANT Chlorination: Sample Type: Received By: KL
Sample ID: AL10727 Facility Name: FULTON F2 Site ID: F2 Location ID: Location Descr:	Date Received: 9/29/2022 Time Received: 11:36 AM Project: Reporting Date: 12/22/2022 Received Temperature: 21.3 °C

ANALYTE	PARAMETER CODE NOTE	EPA METHOD	RESULT	UNITS	QUALIFIER RL	ANALYSIS ANALYST DATE	MCL or QC Range
<b>ETO by EPA Method TO-15 QC Batch 199340</b>							
Bromofluorobenzene(Surrogate QC Std.)	EPA TO-15	9.8128	ppbV		KL	9/30/2022	8 to 12
Ethylene Oxide	EPA TO-15	0.0898	ppbV	0.0232	KL	9/30/2022	
<b>ETO Results by EPA Method TO-15</b>							
Bromofluorobenzene(Surrogate QC Std.)	EPA TO-15	70.1911	ug/m3		KL	9/30/2022	57.22 to 85.84
Ethylene Oxide	EPA TO-15	0.1619	ug/m3	0.0418	KL	9/30/2022	

COMMENTS: \$ETO received in the lab at 7 in Hg.

ug/L: micrograms/liter  
 mg/L: milligrams/liter  
 mg/kg: milligrams/kilogram  
 ug/kg: micrograms/kilogram  
 ug/g: micrograms/gram  
 ppm: parts per million  
 ppb: parts per billion  
 org/L: organisms/liter

<: less than  
 MCL: Maximum Contaminant Level  
 RL: Reporting Limit  
 LSPC: result less than lower specification  
 USPC: result greater than upper specification  
 TIE: Tentatively Identified or Estimated  
 VIOL: Violation (result exceeds MCL)

**Laboratory Contacts:**

Lab Director:	Mark Tolbert	470-524-0577
Inorganics:	Carmen Pyles	470-524-0629
Metals:	Shene Jones	470-524-0544
Organics:	Mary Bowman	470-524-0639
GC Mass Spec:	Ralph Schulz	470-524-0684
Microbiology:	Mary Bowman	470-524-0709

**GEORGIA DEPARTMENT OF NATURAL RESOURCES  
ENVIRONMENTAL PROTECTION DIVISION**

5804 Peachtree Corners East, Norcross, GA 30092-3403  
(678) 248-7384

**LABORATORY REPORT**

TO: Ga EPD Air Program EPD Air Prot Ambient Monitoring 4244 International Pkwy Ste 120 Atlanta, GA 30354	Date Collected: 9/14/2022 Time Collected: 0:00 Sample Collector: J. BRYANT Chlorination: Sample Type: Received By: KL
Sample ID: AL10728 Facility Name: FULTON F1-SA Site ID: F1-SA Location ID: Location Descr:	Date Received: 9/29/2022 Time Received: 11:36 AM Project: Reporting Date: 12/22/2022 Received Temperature: 19.0 °C

ANALYTE	PARAMETER CODE	NOTE	EPA METHOD	RESULT	UNITS	QUALIFIER RL	ANALYSIS ANALYST DATE	MCL or QC Range
<b>ETO by EPA Method TO-15 QC Batch 199340</b>								
Bromofluorobenzene(Surrogate QC Std.)			EPA TO-15	9.8713	ppbV		KL 9/30/2022	8 to 12
Ethylene Oxide			EPA TO-15	0.1158	ppbV	0.0232	KL 9/30/2022	
<b>ETO Results by EPA Method TO-15</b>								
Bromofluorobenzene(Surrogate QC Std.)			EPA TO-15	70.6095	ug/m3		KL 9/30/2022	57.22 to 85.84
Ethylene Oxide			EPA TO-15	0.2087	ug/m3	0.0418	KL 9/30/2022	

COMMENTS: \$ETO received in the lab at 3 in Hg.

ug/L: micrograms/liter  
 mg/L: milligrams/liter  
 mg/kg: milligrams/kilogram  
 ug/kg: micrograms/kilogram  
 ug/g: micrograms/gram  
 ppm: parts per million  
 ppb: parts per billion  
 org/L: organisms/liter

<: less than  
 MCL: Maximum Contaminant Level  
 RL: Reporting Limit  
 LSPC: result less than lower specification  
 USPC: result greater than upper specification  
 TIE: Tentatively Identified or Estimated  
 VIOL: Violation (result exceeds MCL)

**Laboratory Contacts:**

Lab Director:	Mark Tolbert	470-524-0577
Inorganics:	Carmen Pyles	470-524-0629
Metals:	Shene Jones	470-524-0544
Organics:	Mary Bowman	470-524-0639
GC Mass Spec:	Ralph Schulz	470-524-0684
Microbiology:	Mary Bowman	470-524-0709

GEORGIA DEPARTMENT OF NATURAL RESOURCES  
ENVIRONMENTAL PROTECTION DIVISION

5804 Peachtree Corners East, Norcross, GA 30092-3403  
(678) 248-7384

**LABORATORY REPORT**

TO: Ga EPD Air Program EPD Air Prot Ambient Monitoring 4244 International Pkwy Ste 120 Atlanta, GA 30354	Date Collected: 9/14/2022 Time Collected: 0:00 Sample Collector: C. KNOX Chlorination: Sample Type: Received By: KL
Sample ID: AL10729 Facility Name: GENERAL COFFEE Site ID: 013-069-0002 Location ID: Location Descr:	Date Received: 9/26/2022 Time Received: 10:55 AM Project: DATA STUDY Reporting Date: 12/22/2022 Received Temperature: 23.5 °C

ANALYTE	PARAMETER CODE	NOTE	EPA METHOD	RESULT	UNITS	QUALIFIER RL	ANALYSIS ANALYST	DATE	MCL or QC Range
<b>ETO by EPA Method TO-15 QC Batch 199316</b>									
Bromofluorobenzene(Surrogate QC Std.)			EPA TO-15	9.6803	ppbV		KL	9/29/2022	8 to 12
Ethylene Oxide			EPA TO-15	0.0415	ppbV	SQ 2	0.0232	KL	9/29/2022
<b>ETO Results by EPA Method TO-15</b>									
Bromofluorobenzene(Surrogate QC Std.)			EPA TO-15	69.2433	ug/m3		KL	9/29/2022	57.22 to 85.84
Ethylene Oxide			EPA TO-15	0.0748	ug/m3	SQ 2	0.0418	KL	9/29/2022

COMMENTS: \$ETO received in the lab at 21.2 psi. Pressure difference of >0.5 psi between receipt from field and receipt in lab.

ug/L: micrograms/liter  
mg/L: milligrams/liter  
mg/kg: milligrams/kilogram  
ug/kg: micrograms/kilogram  
ug/g: micrograms/gram  
ppm: parts per million  
ppb: parts per billion  
org/L: organisms/liter

<: less than  
MCL: Maximum Contaminant Level  
RL: Reporting Limit  
LSPC: result less than lower specification  
USPC: result greater than upper specification  
TIE: Tentatively Identified or Estimated  
VIOL: Violation (result exceeds MCL)

**Laboratory Contacts:**

Lab Director: Mark Tolbert 470-524-0577  
Inorganics: Carmen Pyles 470-524-0629  
Metals: Shene Jones 470-524-0544  
Organics: Mary Bowman 470-524-0639  
GC Mass Spec: Ralph Schulz 470-524-0684  
Microbiology: Mary Bowman 470-524-0709

**GEORGIA DEPARTMENT OF NATURAL RESOURCES  
ENVIRONMENTAL PROTECTION DIVISION**

5804 Peachtree Corners East, Norcross, GA 30092-3403  
(678) 248-7384

**LABORATORY REPORT**

<b>TO:</b> Ga EPD Air Program EPD Air Prot Ambient Monitoring 4244 International Pkwy Ste 120 Atlanta, GA 30354	Date Collected: 9/21/2022 Time Collected: 0:00 Sample Collector: H. STREET Canister Number: 114394 Canister Cleaned: 8/22/2022 Received By: KL
	Date Received: 9/22/2022 Time Received: 2:40 PM Project: AIR Reporting Date: 12/22/2022 Received Temperature: 23.1 °C
Sample ID: AL10732 Facility Name: S. DEKALB Site ID: 013-089-0002 Location ID: Location Descr:	

ANALYTE	PARAMETER CODE	NOTE	EPA METHOD	RESULT	UNITS	QUALIFIER RL	ANALYSIS ANALYST	DATE	MCL or QC Range
<b>ETO by EPA Method TO-15</b>									
Bromofluorobenzene(Surrogate QC Std.)			EPA TO-15	AL	ppbV		KL	9/23/2022	8 to 12
Ethylene Oxide			EPA TO-15	AL	ppbV	0.0232	KL	9/23/2022	
<b>ETO Results by EPA Method TO-15</b>									
Bromofluorobenzene(Surrogate QC Std.)			EPA TO-15	AL	ug/m3		KL	9/23/2022	57.22 to 85.84
Ethylene Oxide			EPA TO-15	AL	ug/m3		KL	9/23/2022	

COMMENTS: \$ETO received in the lab at 5.2 psi. VOID; ATEC time incorrect.

ug/L: micrograms/liter  
 mg/L: milligrams/liter  
 mg/kg: milligrams/kilogram  
 ug/kg: micrograms/kilogram  
 ug/g: micrograms/gram  
 ppm: parts per million  
 ppb: parts per billion  
 org/L: organisms/liter

<: less than  
 MCL: Maximum Contaminant Level  
 RL: Reporting Limit  
 LSPC: result less than lower specification  
 USPC: result greater than upper specification  
 TIE: Tentatively Identified or Estimated  
 VIOL: Violation (result exceeds MCL)

**Laboratory Contacts:**

Lab Director:	Mark Tolbert	470-524-0577
Inorganics:	Carmen Pyles	470-524-0629
Metals:	Shene Jones	470-524-0544
Organics:	Mary Bowman	470-524-0639
GC Mass Spec:	Ralph Schulz	470-524-0684
Microbiology:	Mary Bowman	470-524-0709

**GEORGIA DEPARTMENT OF NATURAL RESOURCES  
ENVIRONMENTAL PROTECTION DIVISION**

5804 Peachtree Corners East, Norcross, GA 30092-3403  
(678) 248-7384

**LABORATORY REPORT**

TO: Ga EPD Air Program EPD Air Prot Ambient Monitoring 4244 International Pkwy Ste 120 Atlanta, GA 30354	Date Collected: 9/14/2022
	Time Collected: 0:00
Sample ID: AL10733 Facility Name: SOUTH DEKALB Site ID: 013-089-0002 Location ID: Location Descr:	Sample Collector: H. STREET
	Canister Number: 110309
	Canister Cleaned: 8/22/2022
	Received By: KL
	Date Received: 9/16/2022
	Time Received: 10:37 AM
	Project: AIR
	Reporting Date: 12/22/2022
	Received Temperature: 21.6 °C

ANALYTE	PARAMETER		EPA	RESULT	QUALIFIER		ANALYSIS		MCL or	
	CODE	NOTE	METHOD		UNITS	RL	ANALYST	DATE	QC Range	
ETO by EPA Method TO-15 QC Batch 199055										
Bromofluorobenzene(Surrogate QC Std.)			EPA TO-15	9.3742	ppbV		KL	9/20/2022	8 to	12
Ethylene Oxide			EPA TO-15	0.0709	ppbV	SQ	0.0232	KL	9/20/2022	
ETO Results by EPA Method TO-15										
Bromofluorobenzene(Surrogate QC Std.)			EPA TO-15	67.0538	ug/m3		KL	9/20/2022	57.22 to	85.84
Ethylene Oxide			EPA TO-15	0.1278	ug/m3	SQ	0.0418	KL	9/20/2022	

COMMENTS: \$ETO received in the lab at 5.6 psi.

ug/L: micrograms/liter  
mg/L: milligrams/liter  
mg/kg: milligrams/kilogram  
ug/kg: micrograms/kilogram  
ug/g: micrograms/gram  
ppm: parts per million  
ppb: parts per billion  
org/L: organisms/liter

<: less than  
MCL: Maximum Contaminant Level  
RL: Reporting Limit  
LSPC: result less than lower specification  
USPC: result greater than upper specification  
TIE: Tentatively Identified or Estimated  
VIOL: Violation (result exceeds MCL)

**Laboratory Contacts:**

Lab Director:	Mark Tolbert	470-524-0577
Inorganics:	Carmen Pyles	470-524-0629
Metals:	Shene Jones	470-524-0544
Organics:	Mary Bowman	470-524-0639
GC Mass Spec:	Ralph Schulz	470-524-0684
Microbiology:	Mary Bowman	470-524-0709

GEORGIA DEPARTMENT OF NATURAL RESOURCES  
ENVIRONMENTAL PROTECTION DIVISION

5804 Peachtree Corners East, Norcross, GA 30092-3403  
(678) 248-7384

**LABORATORY REPORT**

TO: Ga EPD Air Program EPD Air Prot Ambient Monitoring 4244 International Pkwy Ste 120 Atlanta, GA 30354	Date Collected: 9/21/2022 Time Collected: 0:00 Sample Collector: J. BRYANT Chlorination: Sample Type: Trip Blank Received By: HZ
Sample ID: AL12748 Facility Name: COBB S2 FB Site ID: S2 Location ID: QCCAN Location Descr:	Date Received: 10/18/2022 Time Received: 1:06 PM Project: DATA STUDY Reporting Date: 12/22/2022 Received Temperature: 22.9 °C

ANALYTE	PARAMETER CODE	NOTE	EPA METHOD	RESULT	UNITS	QUALIFIER RL	ANALYSIS ANALYST	DATE	MCL or QC Range
<b>ETO by EPA Method TO-15 QC Batch 199741</b>									
Bromofluorobenzene(Surrogate QC Std.)			EPA TO-15	10.1267	ppbV		KL	10/20/2022	8 to 12
Ethylene Oxide			EPA TO-15	0	ppbV	ND 0.0232	KL	10/20/2022	
<b>ETO Results by EPA Method TO-15</b>									
Bromofluorobenzene(Surrogate QC Std.)			EPA TO-15	72.4364	ug/m3		KL	10/20/2022	57.22 to 85.84
Ethylene Oxide			EPA TO-15	0	ug/m3	ND 0.0418	KL	10/20/2022	

COMMENTS: \$ETO received in the lab at 29 in Hg.

ug/L: micrograms/liter  
mg/L: milligrams/liter  
mg/kg: milligrams/kilogram  
ug/kg: micrograms/kilogram  
ug/g: micrograms/gram  
ppm: parts per million  
ppb: parts per billion  
org/L: organisms/liter

<: less than  
MCL: Maximum Contaminant Level  
RL: Reporting Limit  
LSPC: result less than lower specification  
USPC: result greater than upper specification  
TIE: Tentatively Identified or Estimated  
VIOL: Violation (result exceeds MCL)

**Laboratory Contacts:**

Lab Director: Mark Tolbert 470-524-0577  
Inorganics: Carmen Pyles 470-524-0629  
Metals: Shene Jones 470-524-0544  
Organics: Mary Bowman 470-524-0639  
GC Mass Spec: Ralph Schulz 470-524-0684  
Microbiology: Mary Bowman 470-524-0709

**GEORGIA DEPARTMENT OF NATURAL RESOURCES  
ENVIRONMENTAL PROTECTION DIVISION**

5804 Peachtree Corners East, Norcross, GA 30092-3403  
(678) 248-7384

**LABORATORY REPORT**

TO: Ga EPD Air Program EPD Air Prot Ambient Monitoring 4244 International Pkwy Ste 120 Atlanta, GA 30354	Date Collected: 9/20/2022
	Time Collected: 0:00
Sample ID: AL12749 Facility Name: COVINGTON C2 FB Site ID: C2 Location ID: Location Descr:	Sample Collector: J. BRYANT
	Chlorination:
	Sample Type: Trip Blank
	Received By: HZ
	Date Received: 10/18/2022
	Time Received: 1:06 PM
	Project: DATA STUDY
	Reporting Date: 12/22/2022
	Received Temperature: 20.1 °C

ANALYTE	PARAMETER	EPA	QUALIFIER			ANALYSIS		MCL or	
	CODE	NOTE	METHOD	RESULT	UNITS	RL	ANALYST	DATE	QC Range
ETO by EPA Method TO-15 QC Batch 199741									
Bromofluorobenzene(Surrogate QC Std.)			EPA TO-15	10.2181	ppbV		KL	10/20/2022	8 to 12
Ethylene Oxide			EPA TO-15	0	ppbV	ND 0.0232	KL	10/20/2022	
ETO Results by EPA Method TO-15									
Bromofluorobenzene(Surrogate QC Std.)			EPA TO-15	73.0902	ug/m3		KL	10/20/2022	57.22 to 85.84
Ethylene Oxide			EPA TO-15	0	ug/m3	ND 0.0418	KL	10/20/2022	

COMMENTS: \$ETO received in the lab at 29 in Hg.

ug/L: micrograms/liter  
mg/L: milligrams/liter  
mg/kg: milligrams/kilogram  
ug/kg: micrograms/kilogram  
ug/g: micrograms/gram  
ppm: parts per million  
ppb: parts per billion  
org/L: organisms/liter

<: less than  
MCL: Maximum Contaminant Level  
RL: Reporting Limit  
LSPC: result less than lower specification  
USPC: result greater than upper specification  
TIE: Tentatively Identified or Estimated  
VIOL: Violation (result exceeds MCL)

**Laboratory Contacts:**

Lab Director:	Mark Tolbert	470-524-0577
Inorganics:	Carmen Pyles	470-524-0629
Metals:	Shene Jones	470-524-0544
Organics:	Mary Bowman	470-524-0639
GC Mass Spec:	Ralph Schulz	470-524-0684
Microbiology:	Mary Bowman	470-524-0709

**GEORGIA DEPARTMENT OF NATURAL RESOURCES  
ENVIRONMENTAL PROTECTION DIVISION**

5804 Peachtree Corners East, Norcross, GA 30092-3403  
(678) 248-7384

**LABORATORY REPORT**

TO: Ga EPD Air Program EPD Air Prot Ambient Monitoring 4244 International Pkwy Ste 120 Atlanta, GA 30354	Date Collected: 9/26/2022
	Time Collected: 0:00
Sample ID: AL12750 Facility Name: GENERAL COFFEE Site ID: 013-069-0002 Location ID: Location Descr:	Sample Collector: C. KNOX
	Chlorination:
	Sample Type:
	Received By: HZ
	Date Received: 9/29/2022
	Time Received: 10:16 AM
	Project: DATA STUDY
	Reporting Date: 12/22/2022
	Received Temperature: 20.9 °C

ANALYTE	PARAMETER	EPA	RESULT	QUALIFIER	ANALYSIS	MCL or			
	CODE	NOTE		METHOD	UNITS		RL	ANALYST	DATE
ETO by EPA Method TO-15 QC Batch 199316									
Bromofluorobenzene(Surrogate QC Std.)			EPA TO-15	10.2716	ppbV		KL	9/29/2022	8 to 12
Ethylene Oxide			EPA TO-15	0.050	ppbV	SQ 2	0.0232	KL	9/29/2022
ETO Results by EPA Method TO-15									
Bromofluorobenzene(Surrogate QC Std.)			EPA TO-15	73.4729	ug/m3		KL	9/29/2022	57.22 to 85.84
Ethylene Oxide			EPA TO-15	0.0901	ug/m3	SQ 2	0.0418	KL	9/29/2022

COMMENTS: \$ETO received in the lab at 20.4 psi. Pressure difference of >0.5 psi between receipt from field and receipt in lab.

ug/L: micrograms/liter mg/L: milligrams/liter mg/kg: milligrams/kilogram ug/kg: micrograms/kilogram ug/g: micrograms/gram ppm: parts per million ppb: parts per billion org/L: organisms/liter	<: less than	<b>Laboratory Contacts:</b>	
	MCL: Maximum Contaminant Level		
	RL: Reporting Limit	Lab Director: Mark Tolbert	470-524-0577
	LSPC: result less than lower specification	Inorganics: Carmen Pyles	470-524-0629
	USPC: result greater than upper specification	Metals: Shene Jones	470-524-0544
	TIE: Tentatively Identified or Estimated	Organics: Mary Bowman	470-524-0639
	VIOL: Violation (result exceeds MCL)	GC Mass Spec: Ralph Schulz	470-524-0684
		Microbiology: Mary Bowman	470-524-0709

**GEORGIA DEPARTMENT OF NATURAL RESOURCES  
ENVIRONMENTAL PROTECTION DIVISION**

5804 Peachtree Corners East, Norcross, GA 30092-3403  
(678) 248-7384

**LABORATORY REPORT**

TO: Ga EPD Air Program EPD Air Prot Ambient Monitoring 4244 International Pkwy Ste 120 Atlanta, GA 30354	Date Collected: 9/28/2022 Time Collected: 0:00 Sample Collector: H. STREET Chlorination: Sample Type: Received By: HZ
Sample ID: AL12751 Facility Name: SOUTH DEKALB Site ID: 013-089-0002 Location ID: Location Descr:	Date Received: 9/29/2022 Time Received: 11:36 AM Project: Reporting Date: 12/22/2022 Received Temperature: 22.4 °C

ANALYTE	PARAMETER CODE	NOTE	EPA METHOD	RESULT	UNITS	QUALIFIER RL	ANALYSIS ANALYST DATE	MCL or QC Range
<b>ETO by EPA Method TO-15 QC Batch 199340</b>								
Bromofluorobenzene(Surrogate QC Std.)		EPA TO-15	10.0138	ppbV		KL	9/30/2022	8 to 12
Ethylene Oxide		EPA TO-15	0.0357	ppbV	SQ	0.0232	KL 9/30/2022	
<b>ETO Results by EPA Method TO-15</b>								
Bromofluorobenzene(Surrogate QC Std.)		EPA TO-15	71.6288	ug/m3		KL	9/30/2022	57.22 to 85.84
Ethylene Oxide		EPA TO-15	0.0644	ug/m3	SQ	0.0418	KL 9/30/2022	

COMMENTS: \$ETO received in the lab at 6.4 psi. This is an ETO makeup sample for 9-20-2022.

ug/L: micrograms/liter  
 mg/L: milligrams/liter  
 mg/kg: milligrams/kilogram  
 ug/kg: micrograms/kilogram  
 ug/g: micrograms/gram  
 ppm: parts per million  
 ppb: parts per billion  
 org/L: organisms/liter

<: less than  
 MCL: Maximum Contaminant Level  
 RL: Reporting Limit  
 LSPC: result less than lower specification  
 USPC: result greater than upper specification  
 TIE: Tentatively Identified or Estimated  
 VIOL: Violation (result exceeds MCL)

**Laboratory Contacts:**

Lab Director:	Mark Tolbert	470-524-0577
Inorganics:	Carmen Pyles	470-524-0629
Metals:	Shene Jones	470-524-0544
Organics:	Mary Bowman	470-524-0639
GC Mass Spec:	Ralph Schulz	470-524-0684
Microbiology:	Mary Bowman	470-524-0709

**GEORGIA DEPARTMENT OF NATURAL RESOURCES  
ENVIRONMENTAL PROTECTION DIVISION**

5804 Peachtree Corners East, Norcross, GA 30092-3403  
(678) 248-7384

**LABORATORY REPORT**

TO: Ga EPD Air Program EPD Air Prot Ambient Monitoring 4244 International Pkwy Ste 120 Atlanta, GA 30354	Date Collected: 9/26/2022 Time Collected: 0:00 Sample Collector: J. BRYANT Chlorination: Sample Type: Received By: HZ
Sample ID: AL12752 Facility Name: COVINGTON C2 Site ID: C2 Location ID: Location Descr:	Date Received: 10/18/2022 Time Received: 1:06 PM Project: DATA STUDY Reporting Date: 12/22/2022 Received Temperature: 21.5 °C

ANALYTE	PARAMETER CODE	NOTE	EPA METHOD	RESULT	QUALIFIER UNITS	RL	ANALYSIS ANALYST DATE	MCL or QC Range
<b>ETO by EPA Method TO-15 QC Batch 199741</b>								
Bromofluorobenzene(Surrogate QC Std.)			EPA TO-15	10.0482	ppbV		KL 10/20/2022	8 to 12
Ethylene Oxide			EPA TO-15	0.0867	ppbV	0.0232	KL 10/20/2022	
<b>ETO Results by EPA Method TO-15</b>								
Bromofluorobenzene(Surrogate QC Std.)			EPA TO-15	71.8749	ug/m3		KL 10/20/2022	57.22 to 85.84
Ethylene Oxide			EPA TO-15	0.1563	ug/m3	0.0418	KL 10/20/2022	

COMMENTS: \$ETO received in the lab at 6 in Hg.

ug/L: micrograms/liter  
 mg/L: milligrams/liter  
 mg/kg: milligrams/kilogram  
 ug/kg: micrograms/kilogram  
 ug/g: micrograms/gram  
 ppm: parts per million  
 ppb: parts per billion  
 org/L: organisms/liter

<: less than  
 MCL: Maximum Contaminant Level  
 RL: Reporting Limit  
 LSPC: result less than lower specification  
 USPC: result greater than upper specification  
 TIE: Tentatively Identified or Estimated  
 VIOL: Violation (result exceeds MCL)

**Laboratory Contacts:**

Lab Director:	Mark Tolbert	470-524-0577
Inorganics:	Carmen Pyles	470-524-0629
Metals:	Shene Jones	470-524-0544
Organics:	Mary Bowman	470-524-0639
GC Mass Spec:	Ralph Schulz	470-524-0684
Microbiology:	Mary Bowman	470-524-0709

**GEORGIA DEPARTMENT OF NATURAL RESOURCES  
ENVIRONMENTAL PROTECTION DIVISION**

5804 Peachtree Corners East, Norcross, GA 30092-3403  
(678) 248-7384

**LABORATORY REPORT**

TO: Ga EPD Air Program EPD Air Prot Ambient Monitoring 4244 International Pkwy Ste 120 Atlanta, GA 30354	Date Collected: 9/21/2022
	Time Collected: 0:00
Sample ID: AL12753 Facility Name: FULTON F2 FB Site ID: F2 Location ID: Location Descr:	Sample Collector: J. BRYANT
	Chlorination:
	Sample Type: Trip Blank
	Received By: HZ
	Date Received: 10/18/2022
	Time Received: 1:06 PM
	Project: DATA STUDY
	Reporting Date: 12/22/2022
	Received Temperature: 19.6 °C

ANALYTE	PARAMETER		EPA	RESULT	QUALIFIER		ANALYSIS		MCL or	
	CODE	NOTE	METHOD		UNITS	RL	ANALYST	DATE	QC Range	
ETO by EPA Method TO-15 QC Batch 199741										
Bromofluorobenzene(Surrogate QC Std.)			EPA TO-15	10.2885	ppbV		KL	10/20/2022	8 to	12
Ethylene Oxide			EPA TO-15	0	ppbV	ND 0.0232	KL	10/20/2022		
ETO Results by EPA Method TO-15										
Bromofluorobenzene(Surrogate QC Std.)			EPA TO-15	73.5938	ug/m3		KL	10/20/2022	57.22 to	85.84
Ethylene Oxide			EPA TO-15	0	ug/m3	ND 0.0418	KL	10/20/2022		

COMMENTS: \$ETO received in the lab at 29 in Hg.

ug/L: micrograms/liter  
mg/L: milligrams/liter  
mg/kg: milligrams/kilogram  
ug/kg: micrograms/kilogram  
ug/g: micrograms/gram  
ppm: parts per million  
ppb: parts per billion  
org/L: organisms/liter

<: less than  
MCL: Maximum Contaminant Level  
RL: Reporting Limit  
LSPC: result less than lower specification  
USPC: result greater than upper specification  
TIE: Tentatively Identified or Estimated  
VIOL: Violation (result exceeds MCL)

**Laboratory Contacts:**

Lab Director:	Mark Tolbert	470-524-0577
Inorganics:	Carmen Pyles	470-524-0629
Metals:	Shene Jones	470-524-0544
Organics:	Mary Bowman	470-524-0639
GC Mass Spec:	Ralph Schulz	470-524-0684
Microbiology:	Mary Bowman	470-524-0709

**GEORGIA DEPARTMENT OF NATURAL RESOURCES  
ENVIRONMENTAL PROTECTION DIVISION**

5804 Peachtree Corners East, Norcross, GA 30092-3403  
(678) 248-7384

**LABORATORY REPORT**

TO: Ga EPD Air Program EPD Air Prot Ambient Monitoring 4244 International Pkwy Ste 120 Atlanta, GA 30354	Date Collected: 9/26/2022
	Time Collected: 0:00
Sample ID: AL12754 Facility Name: FULTON F2 Site ID: F2 Location ID: Location Descr:	Sample Collector: J. BRYANT
	Chlorination:
	Sample Type:
	Received By: HZ
	Date Received: 10/18/2022
	Time Received: 1:06 PM
	Project: DATA STUDY
	Reporting Date: 12/22/2022
	Received Temperature: 21.7 °C

ANALYTE	PARAMETER	EPA	RESULT	QUALIFIER		ANALYSIS		MCL or	
	CODE	NOTE		METHOD	UNITS	RL	ANALYST	DATE	QC Range
ETO by EPA Method TO-15 QC Batch 199741									
Bromofluorobenzene(Surrogate QC Std.)			EPA TO-15	9.9829	ppbV		KL	10/20/2022	8 to 12
Ethylene Oxide			EPA TO-15	0.0705	ppbV	SQ 0.0232	KL	10/20/2022	
ETO Results by EPA Method TO-15									
Bromofluorobenzene(Surrogate QC Std.)			EPA TO-15	71.4078	ug/m3		KL	10/20/2022	57.22 to 85.84
Ethylene Oxide			EPA TO-15	0.1271	ug/m3	SQ 0.0418	KL	10/20/2022	

COMMENTS: \$ETO received in the lab at 6 in Hg.

ug/L: micrograms/liter  
mg/L: milligrams/liter  
mg/kg: milligrams/kilogram  
ug/kg: micrograms/kilogram  
ug/g: micrograms/gram  
ppm: parts per million  
ppb: parts per billion  
org/L: organisms/liter

<: less than  
MCL: Maximum Contaminant Level  
RL: Reporting Limit  
LSPC: result less than lower specification  
USPC: result greater than upper specification  
TIE: Tentatively Identified or Estimated  
VIOL: Violation (result exceeds MCL)

**Laboratory Contacts:**

Lab Director:	Mark Tolbert	470-524-0577
Inorganics:	Carmen Pyles	470-524-0629
Metals:	Shene Jones	470-524-0544
Organics:	Mary Bowman	470-524-0639
GC Mass Spec:	Ralph Schulz	470-524-0684
Microbiology:	Mary Bowman	470-524-0709

**GEORGIA DEPARTMENT OF NATURAL RESOURCES  
ENVIRONMENTAL PROTECTION DIVISION**

5804 Peachtree Corners East, Norcross, GA 30092-3403  
(678) 248-7384

**LABORATORY REPORT**

TO: Ga EPD Air Program EPD Air Prot Ambient Monitoring 4244 International Pkwy Ste 120 Atlanta, GA 30354	Date Collected: 9/26/2022
	Time Collected: 0:00
Sample ID: AL12756 Facility Name: COBB S2 Site ID: S2 Location ID: QCCAN Location Descr:	Sample Collector: J. BRYANT
	Chlorination:
	Sample Type:
	Received By: HZ
	Date Received: 10/18/2022
	Time Received: 1:06 PM
	Project: DATA STUDY
	Reporting Date: 12/22/2022
	Received Temperature: 20.7 °C

ANALYTE	PARAMETER	EPA	QUALIFIER			ANALYSIS		MCL or	
	CODE	NOTE	METHOD	RESULT	UNITS	RL	ANALYST	DATE	QC Range
ETO by EPA Method TO-15 QC Batch 199741									
Bromofluorobenzene(Surrogate QC Std.)			EPA TO-15	9.9350	ppbV		KL	10/20/2022	8 to 12
Ethylene Oxide			EPA TO-15	0.0662	ppbV	SQ 0.0232	KL	10/20/2022	
ETO Results by EPA Method TO-15									
Bromofluorobenzene(Surrogate QC Std.)			EPA TO-15	71.0652	ug/m3		KL	10/20/2022	57.22 to 85.84
Ethylene Oxide			EPA TO-15	0.1193	ug/m3	SQ 0.0418	KL	10/20/2022	

COMMENTS: \$ETO received in the lab at 6.5 in Hg.

ug/L: micrograms/liter  
mg/L: milligrams/liter  
mg/kg: milligrams/kilogram  
ug/kg: micrograms/kilogram  
ug/g: micrograms/gram  
ppm: parts per million  
ppb: parts per billion  
org/L: organisms/liter

<: less than  
MCL: Maximum Contaminant Level  
RL: Reporting Limit  
LSPC: result less than lower specification  
USPC: result greater than upper specification  
TIE: Tentatively Identified or Estimated  
VIOL: Violation (result exceeds MCL)

**Laboratory Contacts:**

Lab Director:	Mark Tolbert	470-524-0577
Inorganics:	Carmen Pyles	470-524-0629
Metals:	Shene Jones	470-524-0544
Organics:	Mary Bowman	470-524-0639
GC Mass Spec:	Ralph Schulz	470-524-0684
Microbiology:	Mary Bowman	470-524-0709

**GEORGIA DEPARTMENT OF NATURAL RESOURCES  
ENVIRONMENTAL PROTECTION DIVISION**

5804 Peachtree Corners East, Norcross, GA 30092-3403  
(678) 248-7384

**LABORATORY REPORT**

TO: Ga EPD Air Program EPD Air Prot Ambient Monitoring 4244 International Pkwy Ste 120 Atlanta, GA 30354	Date Collected: 9/26/2022 Time Collected: 0:00 Sample Collector: H. STREET Chlorination: Sample Type: Received By: HZ
Sample ID: AL12762 Facility Name: SOUTH DEKALB Site ID: 013-089-0002 Location ID: Location Descr:	Date Received: 9/29/2022 Time Received: 11:35 AM Project: Reporting Date: 12/22/2022 Received Temperature: 22.9 °C

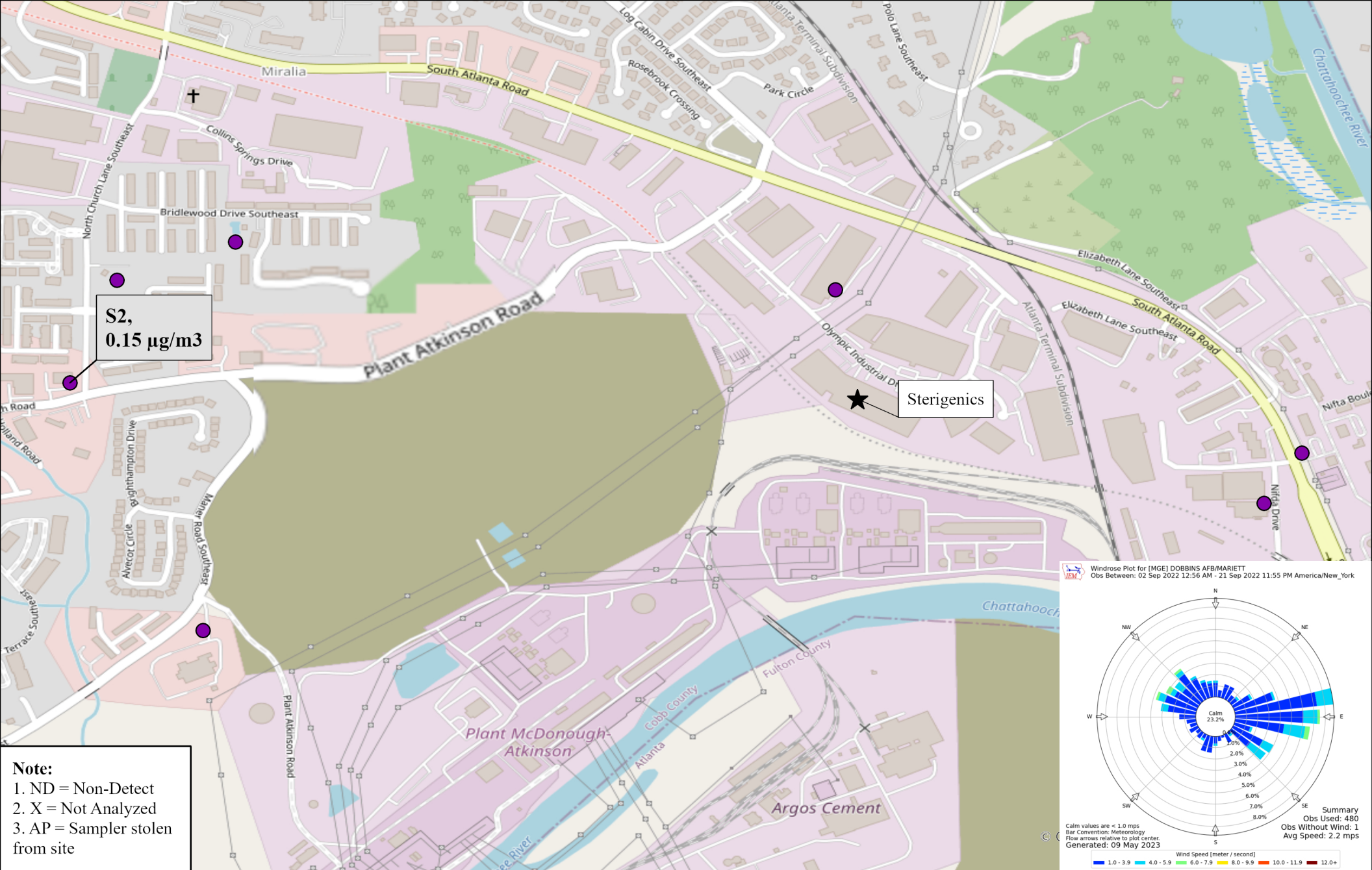
ANALYTE	PARAMETER CODE NOTE	EPA METHOD	RESULT	UNITS	QUALIFIER RL	ANALYSIS ANALYST DATE	MCL or QC Range
<b>ETO by EPA Method TO-15 QC Batch 199340</b>							
Bromofluorobenzene(Surrogate QC Std.)	EPA TO-15	10.0533	ppbV		KL	9/30/2022	8 to 12
Ethylene Oxide	EPA TO-15	0.0696	ppbV	SQ	0.0232	KL	9/30/2022
<b>ETO Results by EPA Method TO-15</b>							
Bromofluorobenzene(Surrogate QC Std.)	EPA TO-15	71.9114	ug/m3		KL	9/30/2022	57.22 to 85.84
Ethylene Oxide	EPA TO-15	0.1255	ug/m3	SQ	0.0418	KL	9/30/2022
COMMENTS: \$ETO received in the lab at 6 psi.							

ug/L: micrograms/liter  
 mg/L: milligrams/liter  
 mg/kg: milligrams/kilogram  
 ug/kg: micrograms/kilogram  
 ug/g: micrograms/gram  
 ppm: parts per million  
 ppb: parts per billion  
 org/L: organisms/liter

<: less than  
 MCL: Maximum Contaminant Level  
 RL: Reporting Limit  
 LSPC: result less than lower specification  
 USPC: result greater than upper specification  
 TIE: Tentatively Identified or Estimated  
 VIOL: Violation (result exceeds MCL)

**Laboratory Contacts:**

Lab Director: Mark Tolbert 470-524-0577  
 Inorganics: Carmen Pyles 470-524-0629  
 Metals: Shene Jones 470-524-0544  
 Organics: Mary Bowman 470-524-0639  
 GC Mass Spec: Ralph Schulz 470-524-0684  
 Microbiology: Mary Bowman 470-524-0709



0 0.08 0.17  
Miles



Site ID, Concentration (µg/m3)

Ethylene Oxide Sampling  
Cobb County, GA

09/02/2022

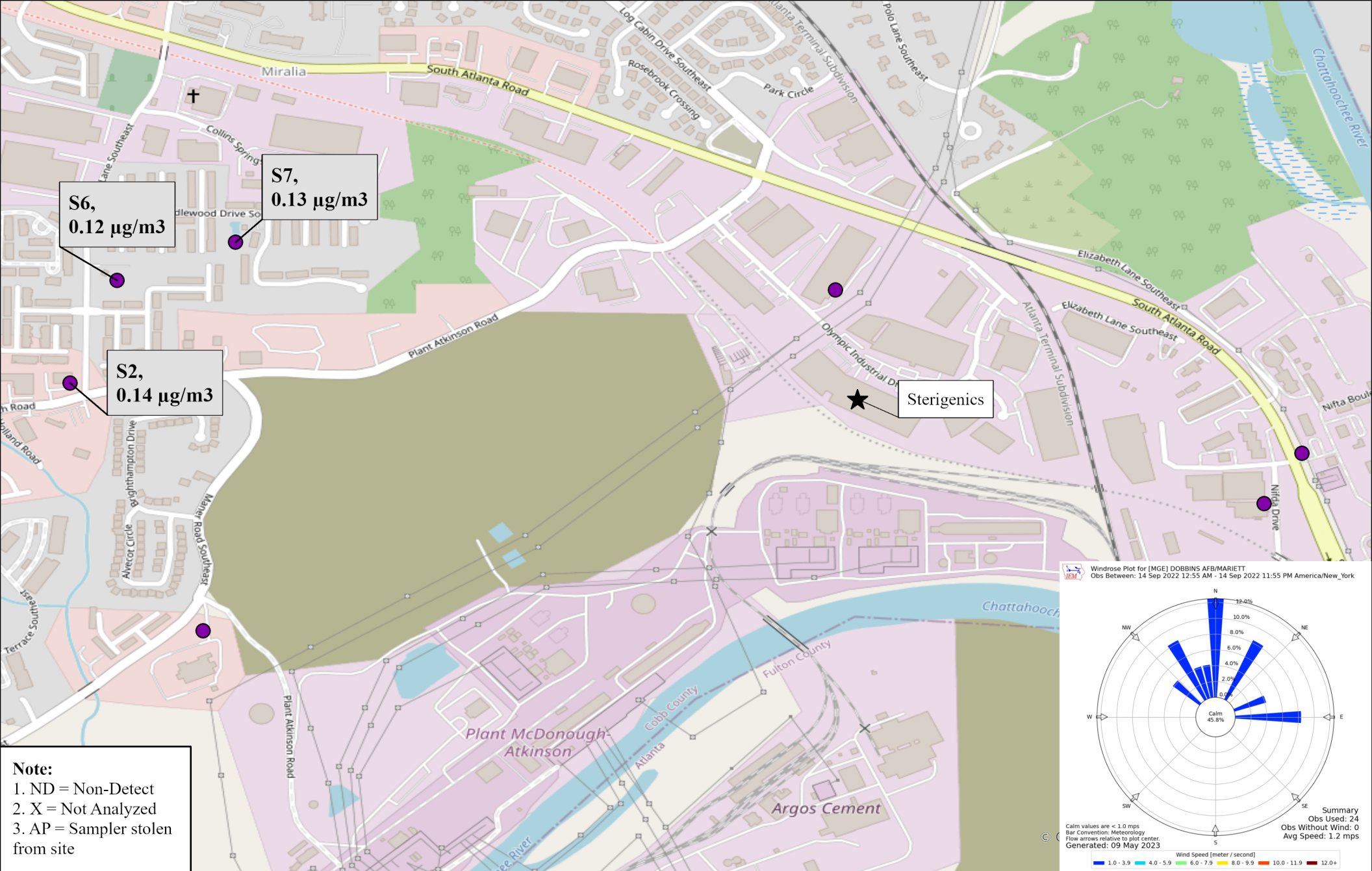
Sampled By: Georgia Environmental Protection Division

Analyzed By: Georgia Environmental Protection Division



**GEORGIA**  
DEPARTMENT OF NATURAL RESOURCES

ENVIRONMENTAL PROTECTION DIVISION



0 0.08 0.17  
Miles



Site ID, Concentration ( $\mu\text{g}/\text{m}^3$ )

Ethylene Oxide Sampling  
Cobb County, GA

09/14/2022

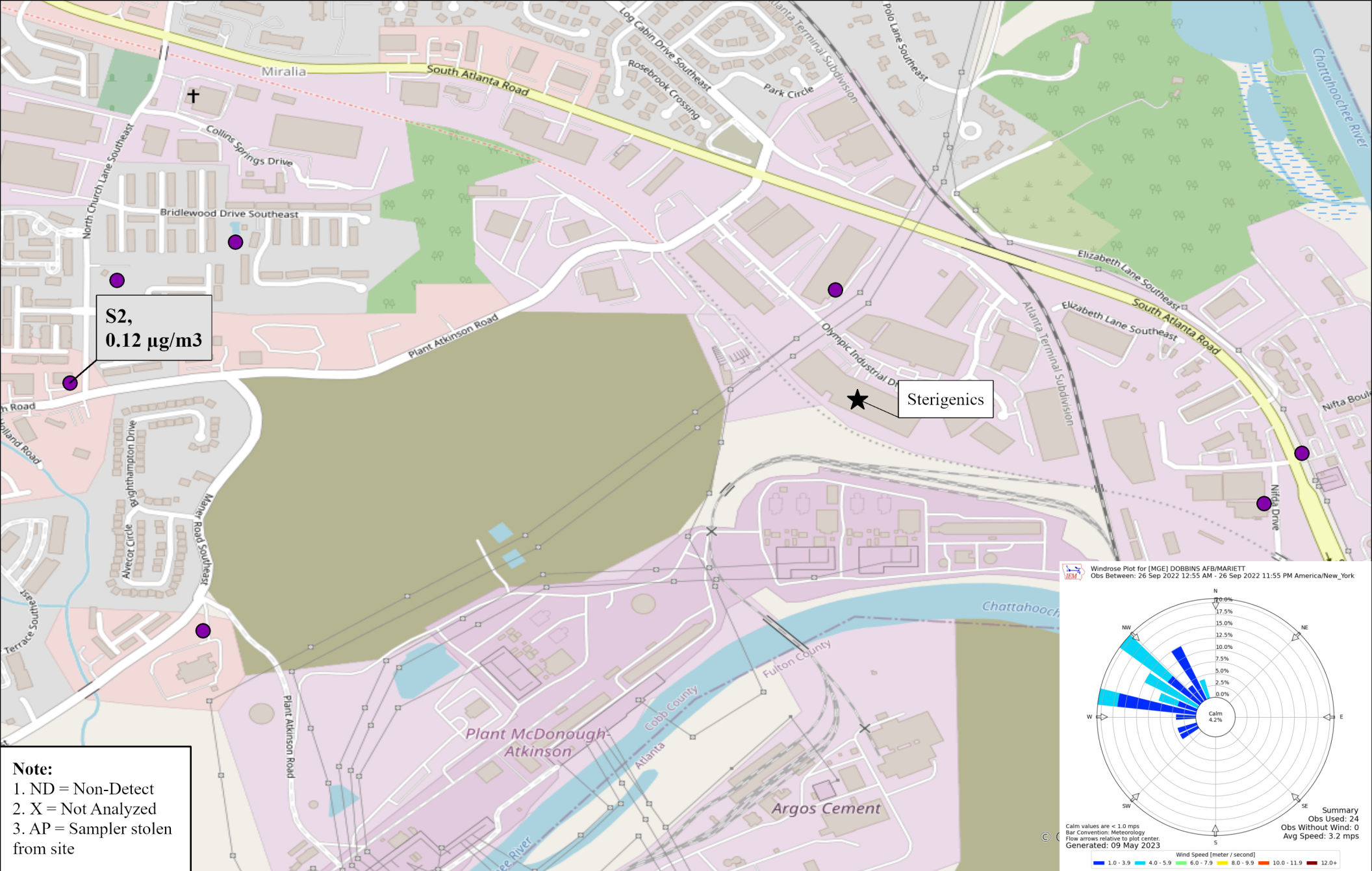
Sampled By: Georgia Environmental Protection Division

Analyzed By: Georgia Environmental Protection Division



**GEORGIA**  
DEPARTMENT OF NATURAL RESOURCES

ENVIRONMENTAL PROTECTION DIVISION



0 0.08 0.17  
Miles



Site ID, Concentration (µg/m3)

Ethylene Oxide Sampling  
Cobb County, GA

09/26/2022

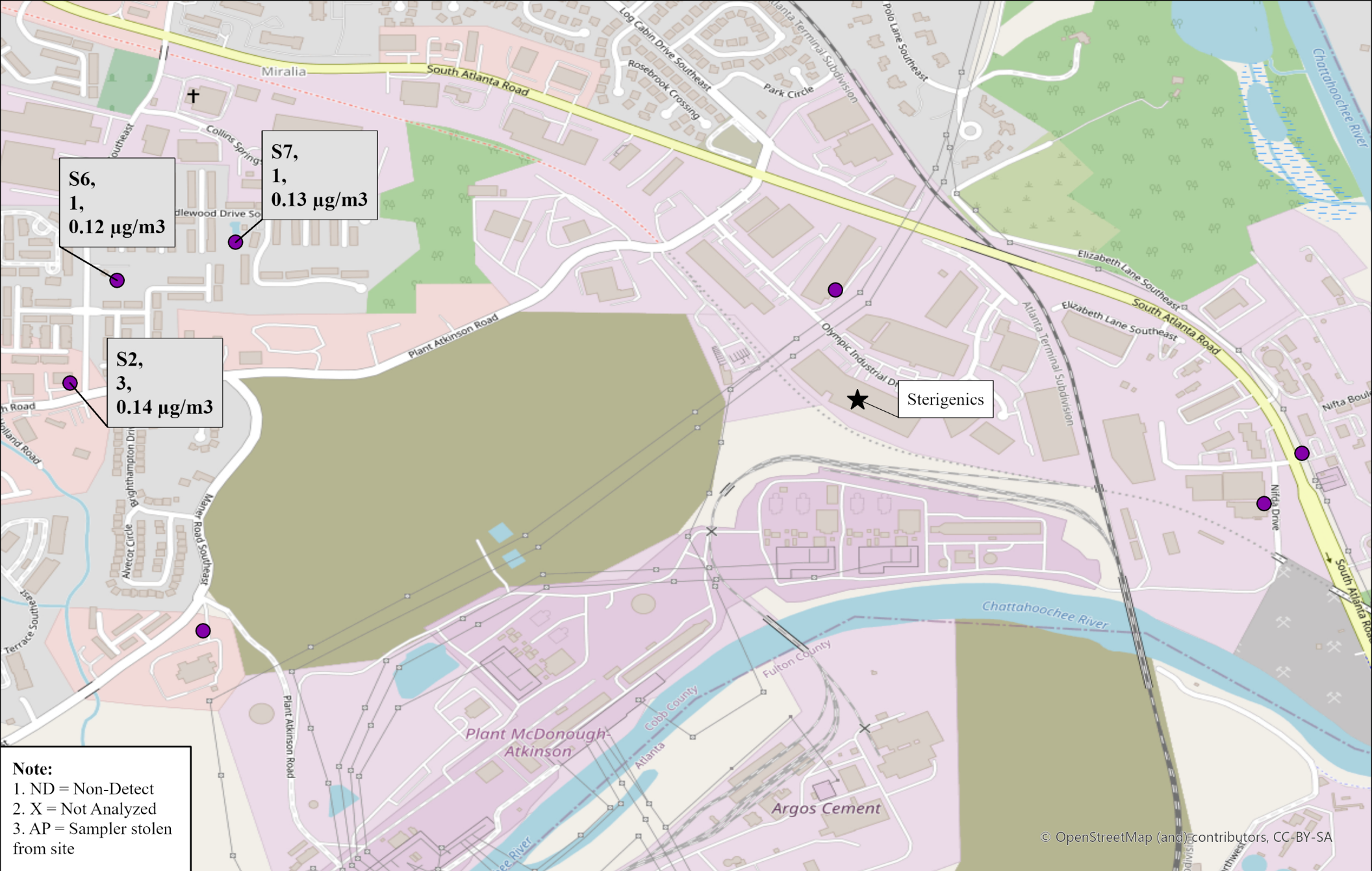
Sampled By: Georgia Environmental Protection Division

Analyzed By: Georgia Environmental Protection Division



**GEORGIA**  
DEPARTMENT OF NATURAL RESOURCES

ENVIRONMENTAL PROTECTION DIVISION



Ethylene Oxide Sampling  
 Cobb County, GA

September 2022 Site Average Values  
 Note: Not detectable values were included in average calculations as a value of 0.  
 Sampled By: Georgia Environmental Protection Division  
 Analyzed By: Georgia Environmental Protection Division