

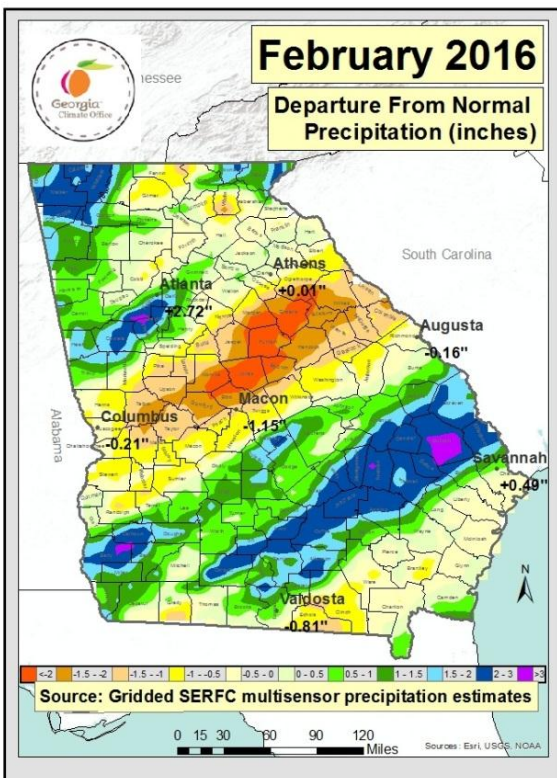
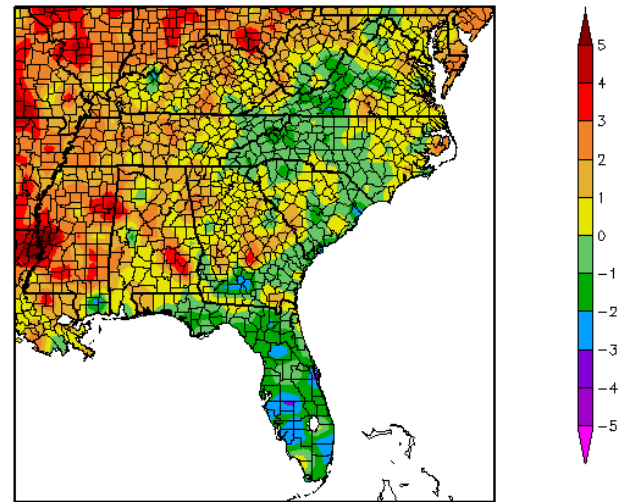
February 2016 Climate Summary – Georgia

Lauren Lindsey, *Service Climatologist*
State of Georgia Climate Office

February marked the last month of meteorological winter. The month was variable but near normal in temperature and quite variable across the state in terms of precipitation. The active long wave pattern brought winter weather in north Georgia, several frontal passages, strong gradient winds, and severe weather outbreaks.

Most of the state saw slightly above normal temperatures except for areas of south Georgia. Atlanta's average February temperature was 48.5°F (+1.3°), Athens recorded 47.6° (+0.4°), Macon's average temperature was 50.6° (+0.6°), Columbus recorded 51.3° (+0.2°), Augusta's monthly average temperature was 49.8° (+0.7°), Savannah recorded 53.7° (+0.7°), St. Simons Island recorded 54.3° (-0.2°), Valdosta's average temperature was 54.8° (+0.6°), and Alma recorded 53.5° (-0.7°). A warm frontal passage allowed daily high temperature records to be broken on 2/2 and 2/3. Augusta tied a daily high temperature record with 79° (previously set in 1990) on 2/2, while Atlanta broke a daily high temperature record with 76° (the previous record of 74° was set in 2014). On 2/3, both Augusta and Savannah set daily high minimum temperature records with 62° (the previous record of 60° was set in 1932) and 63° (the previous record 61° was set in 1990), respectively.

Departure from Normal Temperature (F)
2/1/2016 – 2/29/2016



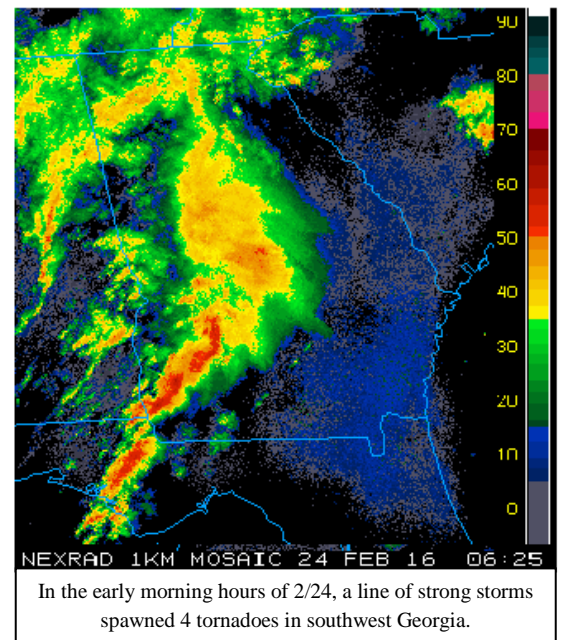
Central Georgia missed out on precipitation in February due to the position of the storm tracks, which favored north and south central areas of the state. Columbus, Macon, and Augusta all received below normal precipitation with 4.23" (-0.21"), 3.21" (-1.15"), and 3.76" (-0.16"), respectively. Atlanta's monthly total precipitation was 7.39" (+2.72"), Athens received 4.49" (+0.01"), St. Simons Island's monthly precipitation was 3.99" (+0.52"), and Alma received 4.66" (+0.86") in February. Savannah's monthly precipitation totaled 3.28" (+0.49"), and on 2/4, 1.93" of rain fell and set a new daily record; the previous record was 1.68" in 1959.

Georgia's meteorological winter season (December through February) was characterized by above normal temperatures statewide and above normal precipitation except in extreme southeast Georgia where precipitation was lacking. The major storm track favored north and west central Georgia where the most precipitation fell in the three month period. Atlanta had its 2nd wettest winter on record with a total 25.04", as well as its 8th warmest winter on record with an average temperature of 49.5°. Athens had its 5th wettest winter on

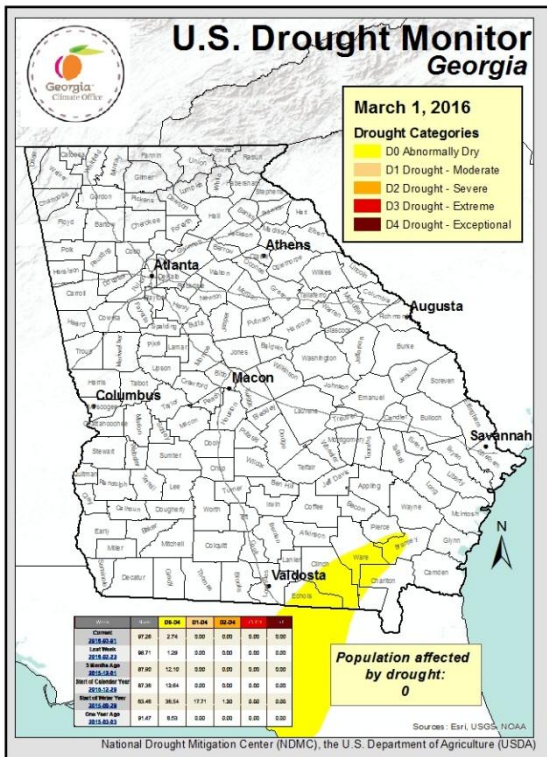
record with 20.54" of total precipitation and ranked 9th warmest winter on record with 48.7°. Columbus also had a wet winter with 24.81" total precipitation, ranking it as the 3rd wettest winter on record.

Several deep low pressure systems barreled through the southeast and brought a few severe weather days in February. An impressive total of 5 tornadoes were reported this month. On 2/3, an EF-1 was reported in Fort Stewart, GA. A dynamical weather system that brought strong tornadoes from Louisiana to the Florida panhandle on 2/15 brought incredibly high winds to the state the next day, although no tornadoes were reported. On 2/16, Augusta's Bush Field recorded sustained 23 mph winds with gusts to 53 mph. Shortly after midnight on 2/24, 4 EF-1 tornadoes were reported in Terrell, Lee, Early, and Grady counties in southwest Georgia.

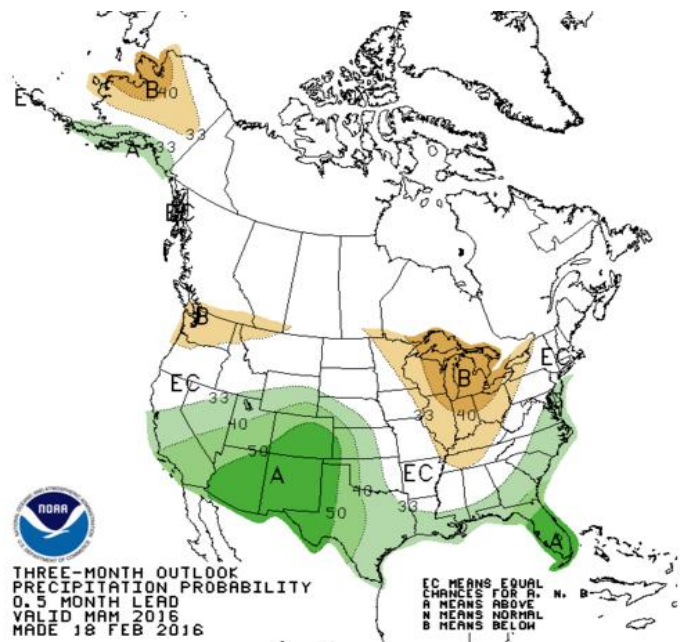
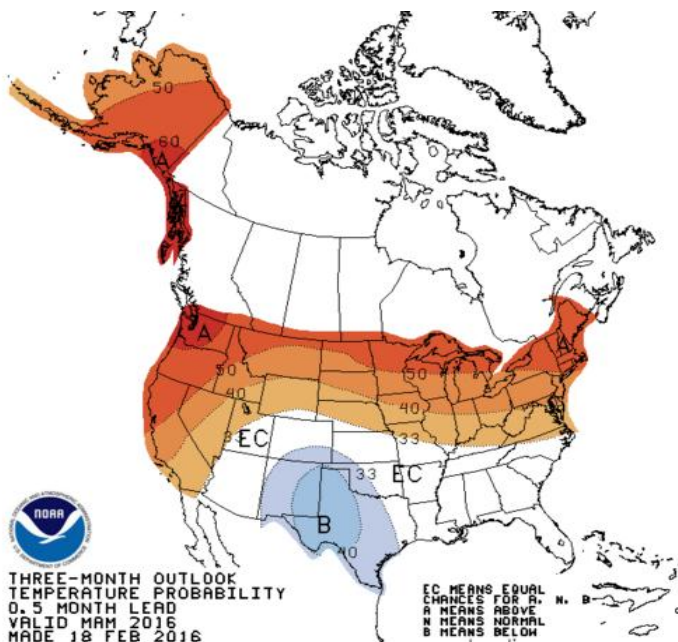
The United States Drought monitor shows that D0 (abnormally dry) conditions were eliminated along the coast of Georgia in February.



Georgia in February. Only a small area of D0 conditions remains in a few counties in south Georgia. The continued active upper-level pattern and southward shift in the subtropical jet stream path associated with the current strong El Niño event should result in improvements to the dry conditions.

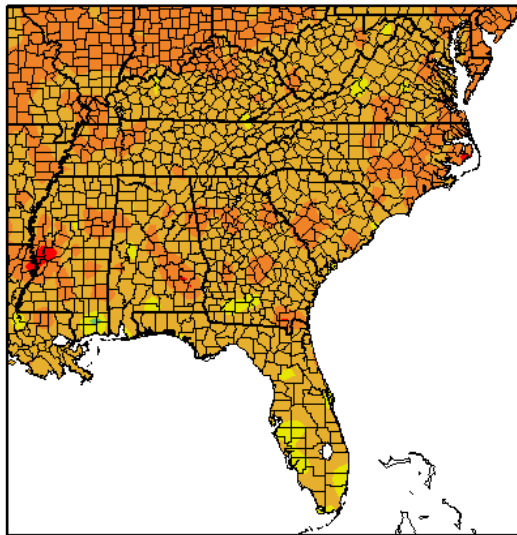


According to the Climate Prediction Center, El Niño conditions are present and there is currently an El Niño Advisory. A transition to ENSO-neutral is likely during late Northern Hemisphere spring or early summer 2016, with a possible transition to La Niña conditions during the fall. The CPC's 3-month seasonal outlook calls for equal chances of above, near, or below normal temperatures, as well as an increased probability for the southern half of Georgia to see above normal precipitation in March, April, and May.

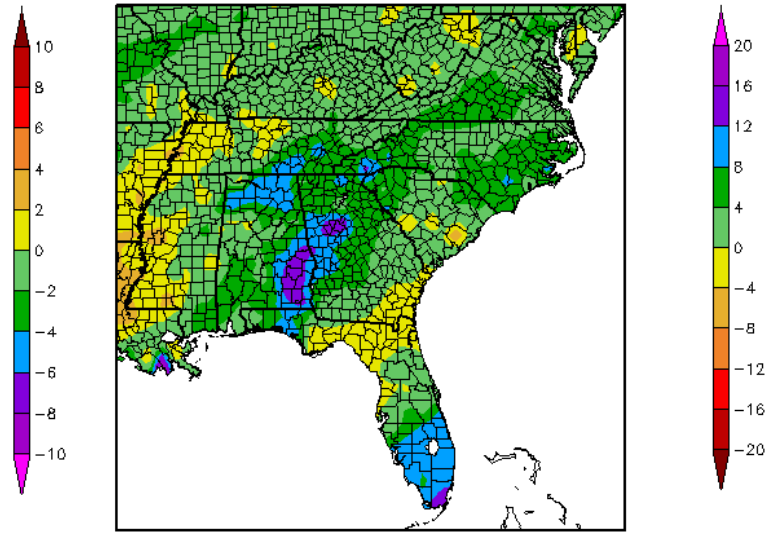


Meteorological Winter Season Maps and Rankings

Departure from Normal Temperature (F)
12/1/2015 - 2/29/2016



Departure from Normal Precipitation (in)
12/1/2015 - 2/29/2016



Average Temperatures – December, January, February

| City | Temperature | Ranking |
|-------------------|-------------|--------------------------|
| Atlanta | 49.5° | 8 th warmest |
| Athens | 48.7° | 9 th warmest |
| Macon | 51.4° | 12 th warmest |
| Columbus | 52.0° | 18 th warmest |
| Augusta | 51.1° | 16 th warmest |
| Savannah | 55.4° | 16 th warmest |
| St. Simons Island | 56.5° | 8 th warmest |
| Alma | 55.2° | 12 th warmest |

Total Precipitation – December, January, February

| City | Precipitation | Ranking |
|-------------------|---------------|--------------------------|
| Atlanta | 25.04" | 2 nd wettest |
| Athens | 20.54" | 5 th wettest |
| Macon | 18.35" | 10 th wettest |
| Columbus | 24.81" | 3 rd wettest |
| Augusta | 12.34" | 51 st wettest |
| Savannah | 9.76" | 51 st wettest |
| St. Simons Island | 8.49" | 32 nd wettest |
| Alma | 11.22" | 31 st wettest |