



GA EPD Public Meeting

The meeting will start soon....

- The co-host will unmute and call on participants who have registered to comment.
- If time allows, participants who did not register to speak will be given the opportunity to do so. Please raise your hand and names will be called. For participants using a telephone, please press * 9 to raise your hand.
- Please limit your comments to **2 minutes**.
- EPD will be listening and recording comments during this meeting.
- EPD will respond to comments in writing.
- EPD will be receiving comments but will not be answering questions.
- Please send written comments to TwinPines.Comment@dnr.ga.gov.



GEORGIA
DEPARTMENT OF NATURAL RESOURCES

ENVIRONMENTAL PROTECTION DIVISION

PUBLIC MEETING

TWIN PINES MINERALS, LLC

DRAFT MINING LAND USE PLAN

February 21 and 23, 2023



PURPOSE OF MEETING

- Twin Pines Minerals, LLC (TPM) has submitted environmental permit applications to the Environmental Protection Division (Division) proposing a demonstration project for mining heavy minerals sands near St. George, Charlton County, Georgia. The northern boundary of the site is located approximately 2.9 miles southeast from the nearest boundary of the Okefenokee National Wildlife Refuge.
- The Mining Land Use Plan (MLUP) identifies Twin Pines Minerals, LLC written proposal for accomplishing land use objectives on the permitted land in accordance with the O.C.G.A. § 12-4-72 Surface Mining Act and the Rules for Surface Mining 391-3-3.
- The Mining Land Use Plan will be used to determine the ability of mining to be conducted within proximity to sensitive environmental resources.
- While all comments are welcome, the Division is specifically interested in comments to address whether the draft MLUP and supporting documents adequately meet these statutory and regulatory requirements.

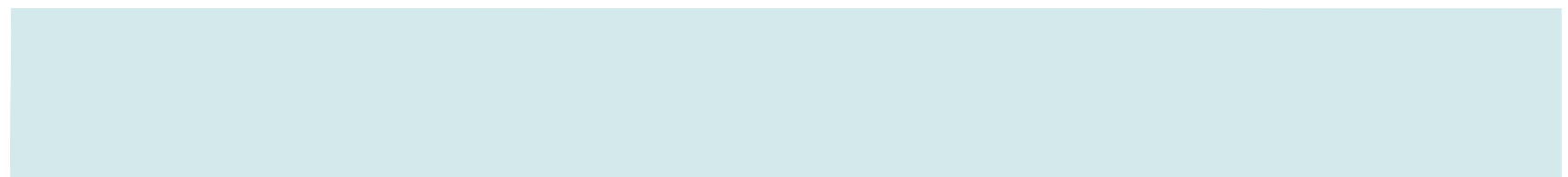
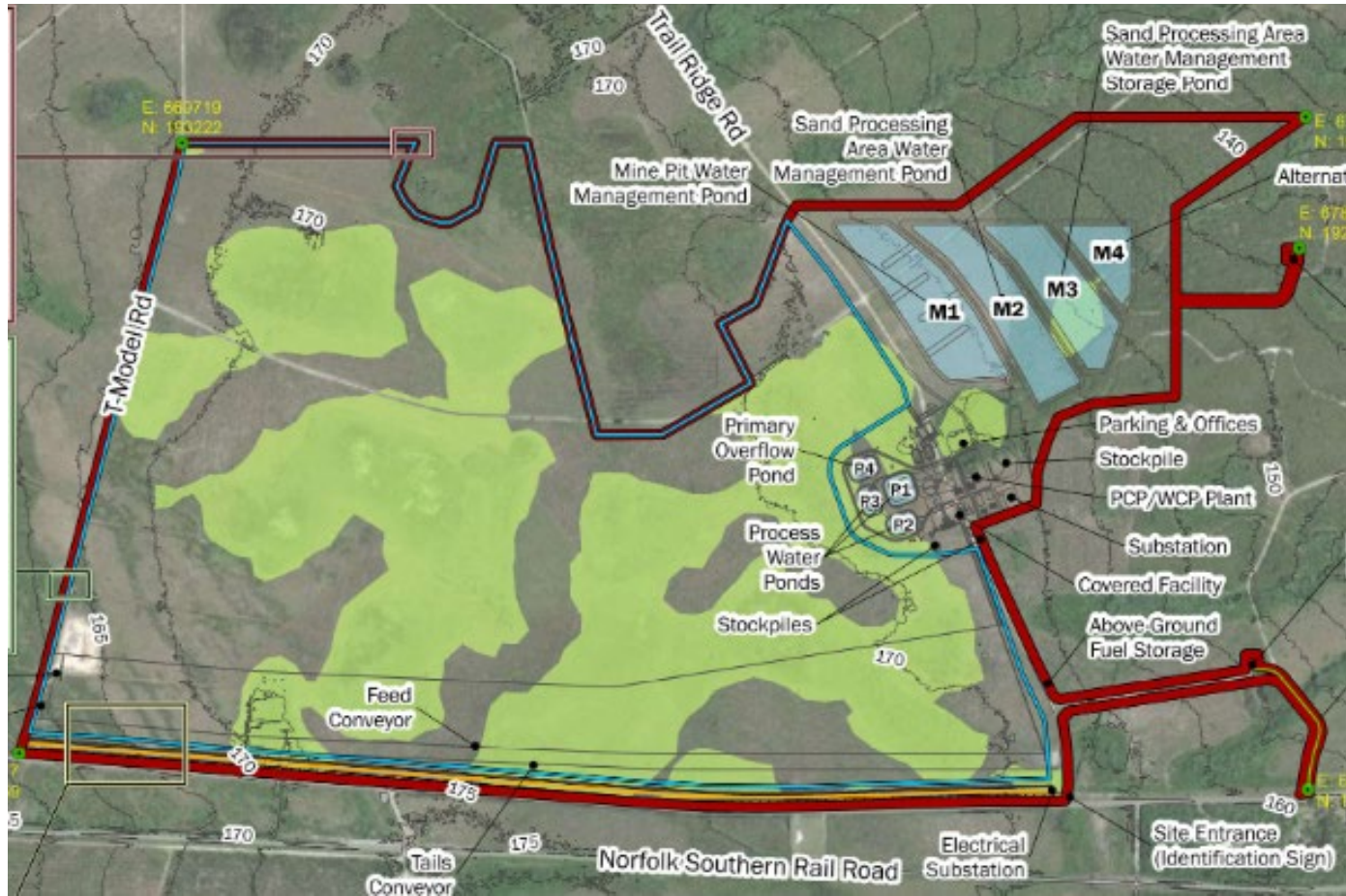


LOCATION OF MINE



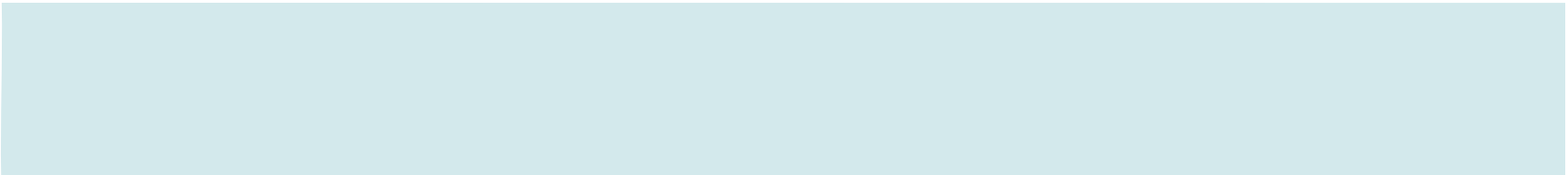
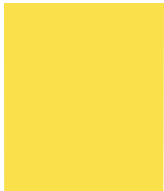
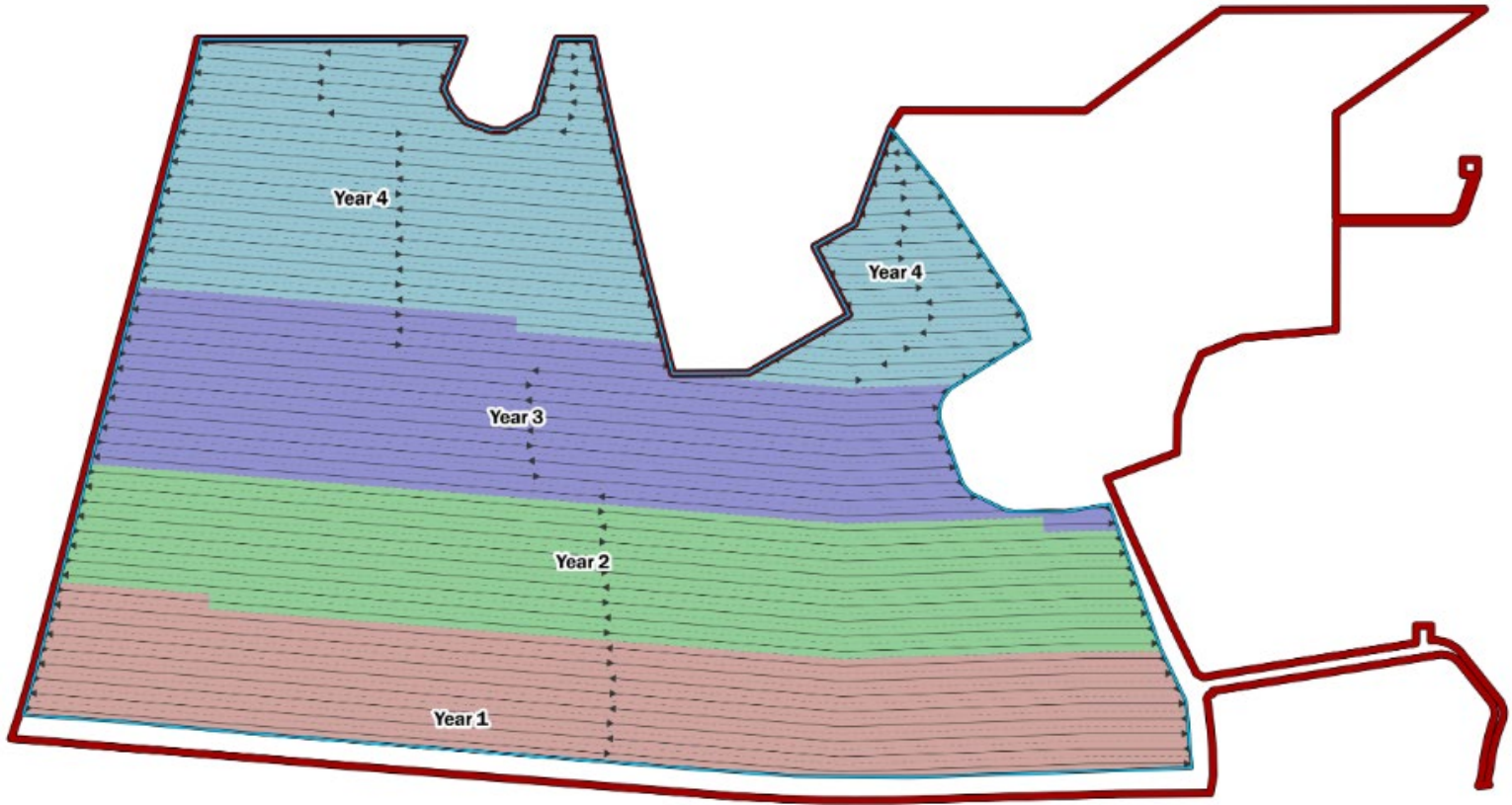


SITE PLAN





SITE PLAN





DRAFT MINING LAND USE PLAN

An agency-approved MLUP is required under Georgia's Surface Mining Act and Rules. The plan must include a description of the proposed mining process, provisions for the protection of adjacent watersheds from effects of erosion and sedimentation, and a land reclamation plan when the mining operation is complete. In this instance, the plan must also identify impacts to adjacent natural resources and – when applicable - a plan to alleviate and/or mitigate effects of such impact.



DRAFT MINING LAND USE PLAN

- Given the proposal's proximity to the Okefenokee Wildlife Refuge, the Division elected to place the draft MLUP out for public review and comment. Comments on the draft plan may be made in writing or orally at one of the two scheduled virtual public meetings.
- The Division will not be responding to technical comments on a rolling basis or as they are received. All comments received until the close of the comment period will be considered by the agency as it makes a decision finalizing the MLUP. Comments already submitted need not be resubmitted.
- The Division will prepare a public document responding to the comments made and indicating any changes to the proposal as a response to comments received. Agency response to comments and finalization of the MLUP can take anywhere from several days to several months to complete, depending on the number and complexity of the comments received. Good comments on the MLUP - additional analysis, data, technical perspectives, mitigation measures, etc. -- helps the Division make good decisions and we look forward to the process.

All documents open for public comment may be found at:

<https://epd.georgia.gov/twin-pines>



SCHEDULE FOR TWIN PINES MINERALS

Draft Mining Land Use Plan

- Public Notice: January 19, 2023
- Public Meetings: February 21 and 23, 2023
- End of Public Notice: March 20, 2023

The Twin Pines Minerals project – as currently proposed – requires multiple permits from the Division including a surface mining permit, a water withdrawal permit, and an air quality permit. Permits establish the activities a facility can conduct and the conditions under which it can conduct them. Once a MLUP is finalized, the Division will then proceed to the development of these draft permits. It is important to note that the Surface Mining Permit will incorporate requirements or mitigation measures included in an approved MLUP. Some of these permits have public notice and comment periods established by law. Draft permits – when available - will be considered as a group and have a comment period separate from the current one.

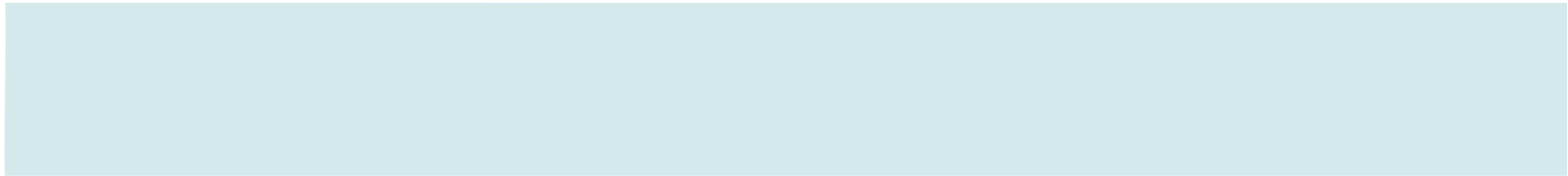


COMMENT – DRAFT MINING LAND USE PLAN

- Participants that registered to speak will be unmuted and called upon. You will be given 10 seconds to begin speaking.
- Please limit comments to **2 minutes**.
- If time allows, participants that did not register to speak may raise their hands. Names will be called in order that hands are raised. For participants using a telephone, please press * 9 to raise your hand.
- The purpose of this meeting is to receive comments, but we will not be answering questions at this time. All technical comments received will be considered by the agency as it makes a decision finalizing the MLUP. Agency response to comments and finalization of the MLUP can take anywhere from several days to several months to complete, depending on the number and complexity of the comments received.
- Written comments: TwinPines.Comment@dnr.ga.gov



15 SECONDS REMAINING





ADJOURN

- **Thank you for your attendance at this public meeting.**
- **The Division will consider these, and all other relevant comments received throughout the public comment period that officially ends at 4:30 pm, Monday, March 20, 2023.**
- **All written comments can be sent to:**
[TwinPines.Comment @dnr.ga.gov](mailto:TwinPines.Comment@dnr.ga.gov)
- **All documents open for public comment can be found at:**
<https://epd.georgia.gov/twin-pines>