

April 17, 2023

**MEMORANDUM**

To: Karen Hays, Air Branch Chief *KH*

Through: James Boylan, Air Branch Chief

Through: DeAnna Oser, Assistant Air Branch Chief

From: Jaime Gore, Operations 1 Unit Manager

RE: Fulton – April 11 – April 23, 2022, Sampling Results for Ethylene Oxide

Samples of Ethylene Oxide (EtO) were collected during the period of April 11 – April 23, 2022, by the Ambient Monitoring Program in the Fulton area to characterize the EtO concentration. Each of the samples were sent to the Georgia Environmental Protection Division Laboratory (EPD) for analysis. The Qualifier code of “2” was given to samples to indicate that the collection deviated from established procedures, but the integrity of the sample was not compromised. The Qualifier code of “SQ” indicates the analysis of the sample was above the method detection limit but below the practical quantification limit.

Location	Date	Qualifier	EtO Concentration ( $\mu\text{g}/\text{m}^3$ )
F2	04/11/2022	SQ	0.10
F2	04/23/2022	2, SQ	0.09
F2-QA	04/11/2022	SQ	0.12
F1-SA	04/23/2022		0.14

If you have any questions, please let me know.

JCG

**GEORGIA DEPARTMENT OF NATURAL RESOURCES  
ENVIRONMENTAL PROTECTION DIVISION**

5804 Peachtree Corners East, Norcross, GA 30092-3403  
(678) 248-7384

**LABORATORY REPORT**

TO: Ga EPD Air Program EPD Air Prot Ambient Monitoring 4244 International Pkwy Ste 120 Atlanta, GA 30354	Date Collected: 4/5/2022 Time Collected: 0:00 Sample Collector: H. STREET Chlorination: Sample Type: Received By: HZ
	Date Received: 4/7/2022 Time Received: 11:52 AM Project: Reporting Date: 6/27/2022 Received Temperature: 21.9 °C
Sample ID: AK96416 Facility Name: SOUTH DEKALB Site ID: 013-089-0002 Location ID: Location Descr:	

ANALYTE	PARAMETER CODE	EPA NOTE	METHOD	RESULT	UNITS	QUALIFIER RL	ANALYSIS		MCL or QC Range
							ANALYST	DATE	
<b>ETO by EPA Method TO-15 QC Batch 195785</b>									
Bromofluorobenzene(Surrogate QC Std.)			EPA TO-15	9.6363	ppbV		KL	4/8/2022	8 to 12
Ethylene Oxide			EPA TO-15	0.0645	ppbV	SQ	0.0232	KL	4/8/2022
<b>ETO Results by EPA Method TO-15</b>									
Bromofluorobenzene(Surrogate QC Std.)			EPA TO-15	68.9286	ug/m3		KL	4/8/2022	57.22 to 85.84
Ethylene Oxide			EPA TO-15	0.1163	ug/m3	SQ	0.0418	KL	4/8/2022

COMMENTS: \$ETO received in the lab at 5 psi.

ug/L: micrograms/liter  
 mg/L: milligrams/liter  
 mg/kg: milligrams/kilogram  
 ug/kg: micrograms/kilogram  
 ug/g: micrograms/gram  
 ppm: parts per million  
 ppb: parts per billion  
 org/L: organisms/liter

<: less than  
 MCL: Maximum Contaminant Level  
 RL: Reporting Limit  
 LSPC: result less than lower specification  
 USPC: result greater than upper specification  
 TIE: Tentatively Identified or Estimated  
 VIOL: Violation (result exceeds MCL)

**Laboratory Contacts:**

Lab Director: Mark Tolbert 470-524-0577  
 Inorganics: Carmen Pyles 470-524-0629  
 Metals: Shene Jones 470-524-0544  
 Organics: Mary Bowman 470-524-0639  
 GC Mass Spec: Ralph Schulz 470-524-0684  
 Microbiology: Mary Bowman 470-524-0709

**GEORGIA DEPARTMENT OF NATURAL RESOURCES  
ENVIRONMENTAL PROTECTION DIVISION**

5804 Peachtree Corners East, Norcross, GA 30092-3403  
(678) 248-7384

**LABORATORY REPORT**

TO: Ga EPD Air Program EPD Air Prot Ambient Monitoring 4244 International Pkwy Ste 120 Atlanta, GA 30354	Date Collected: 4/11/2022 Time Collected: 0:00 Sample Collector: J. BRYANT Chlorination: Sample Type: Received By: HZ
	Date Received: 4/19/2022 Time Received: 12:16 PM Project: DATA STUDY Reporting Date: 6/27/2022 Received Temperature: 17.9 °C
Sample ID: AK97554 Facility Name: COBB S2-QA Site ID: S2-QA Location ID: QCCAN Location Descr:	

ANALYTE	PARAMETER CODE	EPA NOTE	METHOD	RESULT	UNITS	QUALIFIER RL	ANALYSIS		MCL or QC Range
							ANALYST	DATE	
<b>ETO by EPA Method TO-15 QC Batch 195979</b>									
Bromofluorobenzene(Surrogate QC Std.)			EPA TO-15	9.2836	ppbV		KL	4/21/2022	8 to 12
Ethylene Oxide			EPA TO-15	0.0985	ppbV	0.0232	KL	4/21/2022	
<b>ETO Results by EPA Method TO-15</b>									
Bromofluorobenzene(Surrogate QC Std.)			EPA TO-15	66.4057	ug/m3		KL	4/21/2022	57.22 to 85.84
Ethylene Oxide			EPA TO-15	0.1776	ug/m3	0.0418	KL	4/21/2022	

COMMENTS: \$ETO received in the lab at 6 in Hg.

ug/L: micrograms/liter mg/L: milligrams/liter mg/kg: milligrams/kilogram ug/kg: micrograms/kilogram ug/g: micrograms/gram ppm: parts per million ppb: parts per billion org/L: organisms/liter	<: less than MCL: Maximum Contaminant Level RL: Reporting Limit LSPC: result less than lower specification USPC: result greater than upper specification TIE: Tentatively Identified or Estimated VIOL: Violation (result exceeds MCL)	<b>Laboratory Contacts:</b> Lab Director: Mark Tolbert 470-524-0577 Inorganics: Carmen Pyles 470-524-0629 Metals: Shene Jones 470-524-0544 Organics: Mary Bowman 470-524-0639 GC Mass Spec: Ralph Schulz 470-524-0684 Microbiology: Mary Bowman 470-524-0709
---------------------------------------------------------------------------------------------------------------------------------------------------------------------------------------------------------------------	----------------------------------------------------------------------------------------------------------------------------------------------------------------------------------------------------------------------------------------------------------	--------------------------------------------------------------------------------------------------------------------------------------------------------------------------------------------------------------------------------------------------------------------------------

**GEORGIA DEPARTMENT OF NATURAL RESOURCES  
ENVIRONMENTAL PROTECTION DIVISION**

5804 Peachtree Corners East, Norcross, GA 30092-3403  
(678) 248-7384

**LABORATORY REPORT**

TO: Ga EPD Air Program EPD Air Prot Ambient Monitoring 4244 International Pkwy Ste 120 Atlanta, GA 30354	Date Collected: 4/11/2022 Time Collected: 0:00 Sample Collector: J. BRYANT Chlorination: Sample Type: Received By: HZ
	Date Received: 4/19/2022 Time Received: 12:16 PM Project: DATA STUDY Reporting Date: 6/27/2022 Received Temperature: 20.6 °C
Sample ID: AK97555 Facility Name: COBB S2 Site ID: S2 Location ID: Location Descr:	

ANALYTE	PARAMETER CODE	EPA NOTE	METHOD	RESULT	UNITS	QUALIFIER RL	ANALYSIS		MCL or QC Range
							ANALYST	DATE	
<b>ETO by EPA Method TO-15 QC Batch 195979</b>									
Bromofluorobenzene(Surrogate QC Std.)			EPA TO-15	8.9451	ppbV		KL	4/21/2022	8 to 12
Ethylene Oxide			EPA TO-15	0.0862	ppbV	0.0232	KL	4/21/2022	
<b>ETO Results by EPA Method TO-15</b>									
Bromofluorobenzene(Surrogate QC Std.)			EPA TO-15	63.9844	ug/m3		KL	4/21/2022	57.22 to 85.84
Ethylene Oxide			EPA TO-15	0.1554	ug/m3	0.0418	KL	4/21/2022	

COMMENTS: \$ETO received in the lab at 4 in Hg.

ug/L: micrograms/liter  
 mg/L: milligrams/liter  
 mg/kg: milligrams/kilogram  
 ug/kg: micrograms/kilogram  
 ug/g: micrograms/gram  
 ppm: parts per million  
 ppb: parts per billion  
 org/L: organisms/liter

<: less than  
 MCL: Maximum Contaminant Level  
 RL: Reporting Limit  
 LSPC: result less than lower specification  
 USPC: result greater than upper specification  
 TIE: Tentatively Identified or Estimated  
 VIOL: Violation (result exceeds MCL)

**Laboratory Contacts:**

Lab Director: Mark Tolbert 470-524-0577  
 Inorganics: Carmen Pyles 470-524-0629  
 Metals: Shene Jones 470-524-0544  
 Organics: Mary Bowman 470-524-0639  
 GC Mass Spec: Ralph Schulz 470-524-0684  
 Microbiology: Mary Bowman 470-524-0709

**GEORGIA DEPARTMENT OF NATURAL RESOURCES  
ENVIRONMENTAL PROTECTION DIVISION**

5804 Peachtree Corners East, Norcross, GA 30092-3403  
(678) 248-7384

**LABORATORY REPORT**

TO: Ga EPD Air Program EPD Air Prot Ambient Monitoring 4244 International Pkwy Ste 120 Atlanta, GA 30354	Date Collected: 4/11/2022 Time Collected: 0:00 Sample Collector: J. BRYANT Chlorination: Sample Type: Received By: HZ
	Date Received: 4/19/2022 Time Received: 12:16 PM Project: DATA STUDY Reporting Date: 6/27/2022 Received Temperature: 18.1 °C
Sample ID: AK97556 Facility Name: COVINGTON C2-QA Site ID: C2-QA Location ID: Location Descr:	

ANALYTE	PARAMETER CODE	EPA NOTE	METHOD	RESULT	UNITS	QUALIFIER RL	ANALYSIS		MCL or QC Range
							ANALYST	DATE	
<b>ETO by EPA Method TO-15 QC Batch 195979</b>									
Bromofluorobenzene(Surrogate QC Std.)			EPA TO-15	9.4271	ppbV		KL	4/21/2022	8 to 12
Ethylene Oxide			EPA TO-15	0.0587	ppbV	SQ	0.0232	KL	4/21/2022
<b>ETO Results by EPA Method TO-15</b>									
Bromofluorobenzene(Surrogate QC Std.)			EPA TO-15	67.4322	ug/m3		KL	4/21/2022	57.22 to 85.84
Ethylene Oxide			EPA TO-15	0.1058	ug/m3	SQ	0.0418	KL	4/21/2022

COMMENTS: \$ETO received in the lab at 7 in Hg.

ug/L: micrograms/liter  
 mg/L: milligrams/liter  
 mg/kg: milligrams/kilogram  
 ug/kg: micrograms/kilogram  
 ug/g: micrograms/gram  
 ppm: parts per million  
 ppb: parts per billion  
 org/L: organisms/liter

<: less than  
 MCL: Maximum Contaminant Level  
 RL: Reporting Limit  
 LSPC: result less than lower specification  
 USPC: result greater than upper specification  
 TIE: Tentatively Identified or Estimated  
 VIOL: Violation (result exceeds MCL)

**Laboratory Contacts:**

Lab Director: Mark Tolbert 470-524-0577  
 Inorganics: Carmen Pyles 470-524-0629  
 Metals: Shene Jones 470-524-0544  
 Organics: Mary Bowman 470-524-0639  
 GC Mass Spec: Ralph Schulz 470-524-0684  
 Microbiology: Mary Bowman 470-524-0709

**GEORGIA DEPARTMENT OF NATURAL RESOURCES  
ENVIRONMENTAL PROTECTION DIVISION**

5804 Peachtree Corners East, Norcross, GA 30092-3403  
(678) 248-7384

**LABORATORY REPORT**

TO: Ga EPD Air Program EPD Air Prot Ambient Monitoring 4244 International Pkwy Ste 120 Atlanta, GA 30354	Date Collected: 4/11/2022 Time Collected: 0:00 Sample Collector: J. BRYANT Chlorination: Sample Type: Received By: HZ
	Date Received: 4/19/2022 Time Received: 12:16 PM Project: DATA STUDY Reporting Date: 6/27/2022 Received Temperature: 23.4 °C
Sample ID: AK97557 Facility Name: COVINGTON C2 Site ID: C2 Location ID: Location Descr:	

ANALYTE	PARAMETER CODE	EPA NOTE	METHOD	RESULT	UNITS	QUALIFIER RL	ANALYSIS		MCL or QC Range
							ANALYST	DATE	
<b>ETO by EPA Method TO-15 QC Batch 195979</b>									
Bromofluorobenzene(Surrogate QC Std.)			EPA TO-15	9.3729	ppbV		KL	4/21/2022	8 to 12
Ethylene Oxide			EPA TO-15	0.0689	ppbV	SQ	0.0232	KL	4/21/2022
<b>ETO Results by EPA Method TO-15</b>									
Bromofluorobenzene(Surrogate QC Std.)			EPA TO-15	67.0445	ug/m3		KL	4/21/2022	57.22 to 85.84
Ethylene Oxide			EPA TO-15	0.1242	ug/m3	SQ	0.0418	KL	4/21/2022

COMMENTS: \$ETO received in the lab at 3 in Hg.

ug/L: micrograms/liter  
 mg/L: milligrams/liter  
 mg/kg: milligrams/kilogram  
 ug/kg: micrograms/kilogram  
 ug/g: micrograms/gram  
 ppm: parts per million  
 ppb: parts per billion  
 org/L: organisms/liter

<: less than  
 MCL: Maximum Contaminant Level  
 RL: Reporting Limit  
 LSPC: result less than lower specification  
 USPC: result greater than upper specification  
 TIE: Tentatively Identified or Estimated  
 VIOL: Violation (result exceeds MCL)

**Laboratory Contacts:**

Lab Director: Mark Tolbert 470-524-0577  
 Inorganics: Carmen Pyles 470-524-0629  
 Metals: Shene Jones 470-524-0544  
 Organics: Mary Bowman 470-524-0639  
 GC Mass Spec: Ralph Schulz 470-524-0684  
 Microbiology: Mary Bowman 470-524-0709

**GEORGIA DEPARTMENT OF NATURAL RESOURCES  
ENVIRONMENTAL PROTECTION DIVISION**

5804 Peachtree Corners East, Norcross, GA 30092-3403  
(678) 248-7384

**LABORATORY REPORT**

TO: Ga EPD Air Program EPD Air Prot Ambient Monitoring 4244 International Pkwy Ste 120 Atlanta, GA 30354	Date Collected: 4/11/2022 Time Collected: 0:00 Sample Collector: J. BRYANT Chlorination: Sample Type: Received By: HZ
	Date Received: 4/19/2022 Time Received: 12:16 PM Project: DATA STUDY Reporting Date: 6/27/2022 Received Temperature: 22.1 °C
Sample ID: AK97558 Facility Name: FULTON F2 Site ID: F2 Location ID: Location Descr:	

ANALYTE	PARAMETER CODE	EPA NOTE	METHOD	RESULT	UNITS	QUALIFIER RL	ANALYSIS		MCL or QC Range
							ANALYST	DATE	
<b>ETO by EPA Method TO-15 QC Batch 195979</b>									
Bromofluorobenzene(Surrogate QC Std.)			EPA TO-15	8.8804	ppbV		KL	4/21/2022	8 to 12
Ethylene Oxide			EPA TO-15	0.0557	ppbV	SQ	0.0232	KL	4/21/2022
<b>ETO Results by EPA Method TO-15</b>									
Bromofluorobenzene(Surrogate QC Std.)			EPA TO-15	63.5216	ug/m3		KL	4/21/2022	57.22 to 85.84
Ethylene Oxide			EPA TO-15	0.1004	ug/m3	SQ	0.0418	KL	4/21/2022

COMMENTS: \$ETO received in the lab at 5 in Hg.

ug/L: micrograms/liter  
 mg/L: milligrams/liter  
 mg/kg: milligrams/kilogram  
 ug/kg: micrograms/kilogram  
 ug/g: micrograms/gram  
 ppm: parts per million  
 ppb: parts per billion  
 org/L: organisms/liter

<: less than  
 MCL: Maximum Contaminant Level  
 RL: Reporting Limit  
 LSPC: result less than lower specification  
 USPC: result greater than upper specification  
 TIE: Tentatively Identified or Estimated  
 VIOL: Violation (result exceeds MCL)

**Laboratory Contacts:**

Lab Director: Mark Tolbert 470-524-0577  
 Inorganics: Carmen Pyles 470-524-0629  
 Metals: Shene Jones 470-524-0544  
 Organics: Mary Bowman 470-524-0639  
 GC Mass Spec: Ralph Schulz 470-524-0684  
 Microbiology: Mary Bowman 470-524-0709

**GEORGIA DEPARTMENT OF NATURAL RESOURCES  
ENVIRONMENTAL PROTECTION DIVISION**

5804 Peachtree Corners East, Norcross, GA 30092-3403  
(678) 248-7384

**LABORATORY REPORT**

TO: Ga EPD Air Program EPD Air Prot Ambient Monitoring 4244 International Pkwy Ste 120 Atlanta, GA 30354	Date Collected: 4/11/2022 Time Collected: 0:00 Sample Collector: J. BRYANT Chlorination: Sample Type: Received By: HZ
	Date Received: 4/19/2022 Time Received: 12:16 PM Project: DATA STUDY Reporting Date: 6/27/2022 Received Temperature: 19.8 °C
Sample ID: AK97559 Facility Name: FULTON F2-QA Site ID: F2-QA Location ID: Location Descr:	

ANALYTE	PARAMETER CODE	EPA NOTE	METHOD	RESULT	UNITS	QUALIFIER RL	ANALYSIS		MCL or QC Range
							ANALYST	DATE	
<b>ETO by EPA Method TO-15 QC Batch 195979</b>									
Bromofluorobenzene(Surrogate QC Std.)			EPA TO-15	9.4089	ppbV		KL	4/21/2022	8 to 12
Ethylene Oxide			EPA TO-15	0.0659	ppbV	SQ	0.0232	KL	4/21/2022
<b>ETO Results by EPA Method TO-15</b>									
Bromofluorobenzene(Surrogate QC Std.)			EPA TO-15	67.302	ug/m3		KL	4/21/2022	57.22 to 85.84
Ethylene Oxide			EPA TO-15	0.1188	ug/m3	SQ	0.0418	KL	4/21/2022

COMMENTS: \$ETO received in the lab at 4.5 in Hg.

ug/L: micrograms/liter  
 mg/L: milligrams/liter  
 mg/kg: milligrams/kilogram  
 ug/kg: micrograms/kilogram  
 ug/g: micrograms/gram  
 ppm: parts per million  
 ppb: parts per billion  
 org/L: organisms/liter

<: less than  
 MCL: Maximum Contaminant Level  
 RL: Reporting Limit  
 LSPC: result less than lower specification  
 USPC: result greater than upper specification  
 TIE: Tentatively Identified or Estimated  
 VIOL: Violation (result exceeds MCL)

**Laboratory Contacts:**

Lab Director: Mark Tolbert 470-524-0577  
 Inorganics: Carmen Pyles 470-524-0629  
 Metals: Shene Jones 470-524-0544  
 Organics: Mary Bowman 470-524-0639  
 GC Mass Spec: Ralph Schulz 470-524-0684  
 Microbiology: Mary Bowman 470-524-0709



**GEORGIA DEPARTMENT OF NATURAL RESOURCES  
ENVIRONMENTAL PROTECTION DIVISION**

5804 Peachtree Corners East, Norcross, GA 30092-3403  
(678) 248-7384

**LABORATORY REPORT**

TO: Ga EPD Air Program EPD Air Prot Ambient Monitoring 4244 International Pkwy Ste 120 Atlanta, GA 30354	Date Collected: 4/11/2022 Time Collected: 0:00 Sample Collector: H. STREET Canister Number: 114377 Canister Cleaned: 3/21/2022 Received By: HZ
	Date Received: 4/14/2022 Time Received: 11:51 AM Project: AIR Reporting Date: 6/27/2022 Received Temperature: 19.1 °C
Sample ID: AK97560 Facility Name: SOUTH DEKALB Site ID: 013-089-0002 Location ID: Location Descr:	

ANALYTE	PARAMETER CODE	EPA NOTE	METHOD	RESULT	UNITS	QUALIFIER RL	ANALYSIS		MCL or QC Range
							ANALYST	DATE	
<b>ETO by EPA Method TO-15 QC Batch 195920</b>									
Bromofluorobenzene(Surrogate QC Std.)			EPA TO-15	9.5616	ppbV		KL	4/19/2022	8 to 12
Ethylene Oxide			EPA TO-15	0.0471	ppbV	SQ	0.0232	KL	4/19/2022
<b>ETO Results by EPA Method TO-15</b>									
Bromofluorobenzene(Surrogate QC Std.)			EPA TO-15	68.3942	ug/m3		KL	4/19/2022	57.22 to 85.84
Ethylene Oxide			EPA TO-15	0.0849	ug/m3	SQ	0.0418	KL	4/19/2022

COMMENTS: \$ETO received in the lab at 5.2 psi.

ug/L: micrograms/liter  
 mg/L: milligrams/liter  
 mg/kg: milligrams/kilogram  
 ug/kg: micrograms/kilogram  
 ug/g: micrograms/gram  
 ppm: parts per million  
 ppb: parts per billion  
 org/L: organisms/liter

<: less than  
 MCL: Maximum Contaminant Level  
 RL: Reporting Limit  
 LSPC: result less than lower specification  
 USPC: result greater than upper specification  
 TIE: Tentatively Identified or Estimated  
 VIOL: Violation (result exceeds MCL)

**Laboratory Contacts:**

Lab Director: Mark Tolbert 470-524-0577  
 Inorganics: Carmen Pyles 470-524-0629  
 Metals: Shene Jones 470-524-0544  
 Organics: Mary Bowman 470-524-0639  
 GC Mass Spec: Ralph Schulz 470-524-0684  
 Microbiology: Mary Bowman 470-524-0709

**GEORGIA DEPARTMENT OF NATURAL RESOURCES  
ENVIRONMENTAL PROTECTION DIVISION**

5804 Peachtree Corners East, Norcross, GA 30092-3403  
(678) 248-7384

**LABORATORY REPORT**

TO: Ga EPD Air Program EPD Air Prot Ambient Monitoring 4244 International Pkwy Ste 120 Atlanta, GA 30354	Date Collected: 4/11/2022 Time Collected: 0:00 Sample Collector: H. STREET Canister Number: 114382 Canister Cleaned: 3/21/2022 Received By: HZ
	Date Received: 4/14/2022 Time Received: 11:51 AM Project: AIR Reporting Date: 6/27/2022 Received Temperature: 21.5 °C
Sample ID: AK97561 Facility Name: SOUTH DEKALB QA Site ID: 013-089-0002 Location ID: Location Descr:	

ANALYTE	PARAMETER CODE	EPA NOTE	METHOD	RESULT	UNITS	QUALIFIER RL	ANALYSIS		MCL or QC Range
							ANALYST	DATE	
<b>ETO by EPA Method TO-15 QC Batch 195920</b>									
Bromofluorobenzene(Surrogate QC Std.)			EPA TO-15	8.9646	ppbV		KL	4/19/2022	8 to 12
Ethylene Oxide			EPA TO-15	0.0721	ppbV	SQ	0.0232	KL	4/19/2022
<b>ETO Results by EPA Method TO-15</b>									
Bromofluorobenzene(Surrogate QC Std.)			EPA TO-15	64.1239	ug/m3		KL	4/19/2022	57.22 to 85.84
Ethylene Oxide			EPA TO-15	0.13	ug/m3	SQ	0.0418	KL	4/19/2022
<b>ETO NATTS QA Replicate Precision</b>									
Ethylene Oxide			EPA TO-15	10.3	%RPD		KL	4/20/2022	25
<b>ETO QA Replicate Result</b>									
Bromofluorobenzene(Surrogate QC Std.)			EPA TO-15	9.0103	ppbV		KL	4/19/2022	8 to 12
Ethylene Oxide			EPA TO-15	0.0799	ppbV		KL	4/19/2022	

COMMENTS: \$ETO received in the lab at 5 psi.

ug/L: micrograms/liter  
 mg/L: milligrams/liter  
 mg/kg: milligrams/kilogram  
 ug/kg: micrograms/kilogram  
 ug/g: micrograms/gram  
 ppm: parts per million  
 ppb: parts per billion  
 org/L: organisms/liter

<: less than  
 MCL: Maximum Contaminant Level  
 RL: Reporting Limit  
 LSPC: result less than lower specification  
 USPC: result greater than upper specification  
 TIE: Tentatively Identified or Estimated  
 VIOL: Violation (result exceeds MCL)

**Laboratory Contacts:**

Lab Director: Mark Tolbert 470-524-0577  
 Inorganics: Carmen Pyles 470-524-0629  
 Metals: Shene Jones 470-524-0544  
 Organics: Mary Bowman 470-524-0639  
 GC Mass Spec: Ralph Schulz 470-524-0684  
 Microbiology: Mary Bowman 470-524-0709

**GEORGIA DEPARTMENT OF NATURAL RESOURCES  
ENVIRONMENTAL PROTECTION DIVISION**

5804 Peachtree Corners East, Norcross, GA 30092-3403  
(678) 248-7384

**LABORATORY REPORT**

TO: Ga EPD Air Program EPD Air Prot Ambient Monitoring 4244 International Pkwy Ste 120 Atlanta, GA 30354	Date Collected: 4/11/2022 Time Collected: 0:00 Sample Collector: CARYN KNOX Chlorination: Sample Type: Received By: HZ
	Date Received: 4/22/2022 Time Received: 9:58 AM Project: DATA STUDY Reporting Date: 6/27/2022 Received Temperature: 20.1 °C
Sample ID: AK97562 Facility Name: GENERAL COFFEE Site ID: 013-069-0002 Location ID: QCCAN Location Descr:	

ANALYTE	PARAMETER CODE	EPA NOTE	METHOD	RESULT	UNITS	QUALIFIER RL	ANALYSIS		MCL or QC Range
							ANALYST	DATE	
<b>ETO by EPA Method TO-15 QC Batch 196042</b>									
Bromofluorobenzene(Surrogate QC Std.)			EPA TO-15	9.0019	ppbV		KL	4/26/2022	8 to 12
Ethylene Oxide			EPA TO-15	0.0437	ppbV	SQ	0.0232	KL	4/26/2022
<b>ETO Results by EPA Method TO-15</b>									
Bromofluorobenzene(Surrogate QC Std.)			EPA TO-15	64.3907	ug/m3		KL	4/26/2022	57.22 to 85.84
Ethylene Oxide			EPA TO-15	0.0788	ug/m3	SQ	0.0418	KL	4/26/2022

COMMENTS: \$ETO received in the lab at 22.2 psi.

ug/L: micrograms/liter  
 mg/L: milligrams/liter  
 mg/kg: milligrams/kilogram  
 ug/kg: micrograms/kilogram  
 ug/g: micrograms/gram  
 ppm: parts per million  
 ppb: parts per billion  
 org/L: organisms/liter

<: less than  
 MCL: Maximum Contaminant Level  
 RL: Reporting Limit  
 LSPC: result less than lower specification  
 USPC: result greater than upper specification  
 TIE: Tentatively Identified or Estimated  
 VIOL: Violation (result exceeds MCL)

**Laboratory Contacts:**

Lab Director: Mark Tolbert 470-524-0577  
 Inorganics: Carmen Pyles 470-524-0629  
 Metals: Shene Jones 470-524-0544  
 Organics: Mary Bowman 470-524-0639  
 GC Mass Spec: Ralph Schulz 470-524-0684  
 Microbiology: Mary Bowman 470-524-0709

**GEORGIA DEPARTMENT OF NATURAL RESOURCES  
ENVIRONMENTAL PROTECTION DIVISION**

5804 Peachtree Corners East, Norcross, GA 30092-3403  
(678) 248-7384

**LABORATORY REPORT**

TO: Ga EPD Air Program EPD Air Prot Ambient Monitoring 4244 International Pkwy Ste 120 Atlanta, GA 30354	Date Collected: 4/17/2022 Time Collected: 0:00 Sample Collector: H. STREET Canister Number: 114381 Canister Cleaned: 3/21/2022 Received By: HZ
	Date Received: 4/19/2022 Time Received: 12:16 PM Project: AIR Reporting Date: 6/27/2022 Received Temperature: 19.9 °C
Sample ID: AK97564 Facility Name: SOUTH DEKALB Site ID: 013-089-0002 Location ID: Location Descr:	

ANALYTE	PARAMETER CODE	EPA NOTE	METHOD	RESULT	UNITS	QUALIFIER RL	ANALYSIS		MCL or QC Range
							ANALYST	DATE	
<b>ETO by EPA Method TO-15 QC Batch 195979</b>									
Bromofluorobenzene(Surrogate QC Std.)			EPA TO-15	9.2185	ppbV		KL	4/21/2022	8 to 12
Ethylene Oxide			EPA TO-15	0.0700	ppbV	SQ	0.0232	KL	4/21/2022
<b>ETO Results by EPA Method TO-15</b>									
Bromofluorobenzene(Surrogate QC Std.)			EPA TO-15	65.94	ug/m3		KL	4/21/2022	57.22 to 85.84
Ethylene Oxide			EPA TO-15	0.1262	ug/m3	SQ	0.0418	KL	4/21/2022

COMMENTS: \$ETO received in the lab at 5.2 psi.

ug/L: micrograms/liter mg/L: milligrams/liter mg/kg: milligrams/kilogram ug/kg: micrograms/kilogram ug/g: micrograms/gram ppm: parts per million ppb: parts per billion org/L: organisms/liter	<: less than MCL: Maximum Contaminant Level RL: Reporting Limit LSPC: result less than lower specification USPC: result greater than upper specification TIE: Tentatively Identified or Estimated VIOL: Violation (result exceeds MCL)	<b>Laboratory Contacts:</b> Lab Director: Mark Tolbert 470-524-0577 Inorganics: Carmen Pyles 470-524-0629 Metals: Shene Jones 470-524-0544 Organics: Mary Bowman 470-524-0639 GC Mass Spec: Ralph Schulz 470-524-0684 Microbiology: Mary Bowman 470-524-0709
---------------------------------------------------------------------------------------------------------------------------------------------------------------------------------------------------------------------	----------------------------------------------------------------------------------------------------------------------------------------------------------------------------------------------------------------------------------------------------------	--------------------------------------------------------------------------------------------------------------------------------------------------------------------------------------------------------------------------------------------------------------------------------

**GEORGIA DEPARTMENT OF NATURAL RESOURCES  
ENVIRONMENTAL PROTECTION DIVISION**

5804 Peachtree Corners East, Norcross, GA 30092-3403  
(678) 248-7384

**LABORATORY REPORT**

TO: Ga EPD Air Program EPD Air Prot Ambient Monitoring 4244 International Pkwy Ste 120 Atlanta, GA 30354	Date Collected: 4/23/2022 Time Collected: 0:00 Sample Collector: J. BRYANT Chlorination: Sample Type: Received By: HZ
	Date Received: 5/4/2022 Time Received: 10:52 AM Project: DATA STUDY Reporting Date: 6/27/2022 Received Temperature: 21.4 °C
Sample ID: AK98165 Facility Name: COBB S2 Site ID: S2 Location ID: QCCAN Location Descr:	

ANALYTE	PARAMETER CODE	EPA NOTE	METHOD	RESULT	UNITS	QUALIFIER RL	ANALYSIS		MCL or QC Range
							ANALYST	DATE	
<b>ETO by EPA Method TO-15 QC Batch 196380</b>									
Bromofluorobenzene(Surrogate QC Std.)			EPA TO-15	9.7789	ppbV		KL	5/10/2022	8 to 12
Ethylene Oxide			EPA TO-15	0.0660	ppbV	SQ	0.0232	KL	5/10/2022
<b>ETO Results by EPA Method TO-15</b>									
Bromofluorobenzene(Surrogate QC Std.)			EPA TO-15	69.9486	ug/m3		KL	5/10/2022	57.22 to 85.84
Ethylene Oxide			EPA TO-15	0.119	ug/m3	SQ	0.0418	KL	5/10/2022

COMMENTS: \$ETO received in the lab at 6 in Hg.

ug/L: micrograms/liter  
 mg/L: milligrams/liter  
 mg/kg: milligrams/kilogram  
 ug/kg: micrograms/kilogram  
 ug/g: micrograms/gram  
 ppm: parts per million  
 ppb: parts per billion  
 org/L: organisms/liter

<: less than  
 MCL: Maximum Contaminant Level  
 RL: Reporting Limit  
 LSPC: result less than lower specification  
 USPC: result greater than upper specification  
 TIE: Tentatively Identified or Estimated  
 VIOL: Violation (result exceeds MCL)

**Laboratory Contacts:**

Lab Director: Mark Tolbert 470-524-0577  
 Inorganics: Carmen Pyles 470-524-0629  
 Metals: Shene Jones 470-524-0544  
 Organics: Mary Bowman 470-524-0639  
 GC Mass Spec: Ralph Schulz 470-524-0684  
 Microbiology: Mary Bowman 470-524-0709

**GEORGIA DEPARTMENT OF NATURAL RESOURCES  
ENVIRONMENTAL PROTECTION DIVISION**

5804 Peachtree Corners East, Norcross, GA 30092-3403  
(678) 248-7384

**LABORATORY REPORT**

TO: Ga EPD Air Program EPD Air Prot Ambient Monitoring 4244 International Pkwy Ste 120 Atlanta, GA 30354	Date Collected: 4/23/2022 Time Collected: 0:00 Sample Collector: J. BRYANT Chlorination: Sample Type: Received By: HZ
	Date Received: 5/4/2022 Time Received: 10:52 AM Project: DATA STUDY Reporting Date: 6/27/2022 Received Temperature: 21.5 °C
Sample ID: AK98166 Facility Name: COBB S7-SA Site ID: S7-SA Location ID: Location Descr:	

ANALYTE	PARAMETER CODE	EPA NOTE	METHOD	RESULT	UNITS	QUALIFIER RL	ANALYSIS		MCL or QC Range
							ANALYST	DATE	
<b>ETO by EPA Method TO-15 QC Batch 196380</b>									
Bromofluorobenzene(Surrogate QC Std.)			EPA TO-15	9.6797	ppbV		KL	5/10/2022	8 to 12
Ethylene Oxide			EPA TO-15	0.1075	ppbV	0.0232	KL	5/10/2022	
<b>ETO Results by EPA Method TO-15</b>									
Bromofluorobenzene(Surrogate QC Std.)			EPA TO-15	69.239	ug/m3		KL	5/10/2022	57.22 to 85.84
Ethylene Oxide			EPA TO-15	0.1938	ug/m3	0.0418	KL	5/10/2022	

COMMENTS: \$ETO received in the lab at 7 in Hg.

ug/L: micrograms/liter  
 mg/L: milligrams/liter  
 mg/kg: milligrams/kilogram  
 ug/kg: micrograms/kilogram  
 ug/g: micrograms/gram  
 ppm: parts per million  
 ppb: parts per billion  
 org/L: organisms/liter

<: less than  
 MCL: Maximum Contaminant Level  
 RL: Reporting Limit  
 LSPC: result less than lower specification  
 USPC: result greater than upper specification  
 TIE: Tentatively Identified or Estimated  
 VIOL: Violation (result exceeds MCL)

**Laboratory Contacts:**

Lab Director: Mark Tolbert 470-524-0577  
 Inorganics: Carmen Pyles 470-524-0629  
 Metals: Shene Jones 470-524-0544  
 Organics: Mary Bowman 470-524-0639  
 GC Mass Spec: Ralph Schulz 470-524-0684  
 Microbiology: Mary Bowman 470-524-0709

**GEORGIA DEPARTMENT OF NATURAL RESOURCES  
ENVIRONMENTAL PROTECTION DIVISION**

5804 Peachtree Corners East, Norcross, GA 30092-3403  
(678) 248-7384

**LABORATORY REPORT**

TO: Ga EPD Air Program EPD Air Prot Ambient Monitoring 4244 International Pkwy Ste 120 Atlanta, GA 30354	Date Collected: 4/21/2022 Time Collected: 0:00 Sample Collector: J. BRYANT Chlorination: Sample Type: T Received By: HZ
	Date Received: 5/4/2022 Time Received: 10:52 AM Project: DATA STUDY Reporting Date: 6/27/2022 Received Temperature: 21.4 °C
Sample ID: AK98167 Facility Name: COBB S2, S6-SA, S7-SA FB Site ID: S2 Location ID: Location Descr:	

ANALYTE	PARAMETER CODE	EPA NOTE	METHOD	RESULT	UNITS	QUALIFIER RL	ANALYSIS		MCL or QC Range
							ANALYST	DATE	
<b>ETO by EPA Method TO-15 QC Batch 196380</b>									
Bromofluorobenzene(Surrogate QC Std.)			EPA TO-15	10.0278	ppbV		KL	5/10/2022	8 to 12
Ethylene Oxide			EPA TO-15	0	ppbV	ND	0.0232	KL	5/10/2022
<b>ETO Results by EPA Method TO-15</b>									
Bromofluorobenzene(Surrogate QC Std.)			EPA TO-15	71.729	ug/m3		KL	5/10/2022	57.22 to 85.84
Ethylene Oxide			EPA TO-15	0	ug/m3	ND	0.0418	KL	5/10/2022

COMMENTS: \$ETO received in the lab at 29 in Hg.

ug/L: micrograms/liter  
 mg/L: milligrams/liter  
 mg/kg: milligrams/kilogram  
 ug/kg: micrograms/kilogram  
 ug/g: micrograms/gram  
 ppm: parts per million  
 ppb: parts per billion  
 org/L: organisms/liter

<: less than  
 MCL: Maximum Contaminant Level  
 RL: Reporting Limit  
 LSPC: result less than lower specification  
 USPC: result greater than upper specification  
 TIE: Tentatively Identified or Estimated  
 VIOL: Violation (result exceeds MCL)

**Laboratory Contacts:**

Lab Director: Mark Tolbert 470-524-0577  
 Inorganics: Carmen Pyles 470-524-0629  
 Metals: Shene Jones 470-524-0544  
 Organics: Mary Bowman 470-524-0639  
 GC Mass Spec: Ralph Schulz 470-524-0684  
 Microbiology: Mary Bowman 470-524-0709

**GEORGIA DEPARTMENT OF NATURAL RESOURCES  
ENVIRONMENTAL PROTECTION DIVISION**

5804 Peachtree Corners East, Norcross, GA 30092-3403  
(678) 248-7384

**LABORATORY REPORT**

TO: Ga EPD Air Program EPD Air Prot Ambient Monitoring 4244 International Pkwy Ste 120 Atlanta, GA 30354	Date Collected: 4/23/2022 Time Collected: 0:00 Sample Collector: J. BRYANT Chlorination: Sample Type: Received By: HZ
	Date Received: 5/4/2022 Time Received: 10:52 AM Project: DATA STUDY Reporting Date: 6/27/2022 Received Temperature: 21.4 °C
Sample ID: AK98168 Facility Name: COBB S6-SA Site ID: S6-SA Location ID: Location Descr:	

ANALYTE	PARAMETER CODE	EPA NOTE	METHOD	RESULT	UNITS	QUALIFIER RL	ANALYSIS		MCL or QC Range
							ANALYST	DATE	
<b>ETO by EPA Method TO-15 QC Batch 196380</b>									
Bromofluorobenzene(Surrogate QC Std.)			EPA TO-15	9.5419	ppbV		KL	5/10/2022	8 to 12
Ethylene Oxide			EPA TO-15	0.0592	ppbV	SQ	0.0232	KL	5/10/2022
<b>ETO Results by EPA Method TO-15</b>									
Bromofluorobenzene(Surrogate QC Std.)			EPA TO-15	68.2533	ug/m3		KL	5/10/2022	57.22 to 85.84
Ethylene Oxide			EPA TO-15	0.1067	ug/m3	SQ	0.0418	KL	5/10/2022

COMMENTS: \$ETO received in the lab at 6 in Hg.

ug/L: micrograms/liter mg/L: milligrams/liter mg/kg: milligrams/kilogram ug/kg: micrograms/kilogram ug/g: micrograms/gram ppm: parts per million ppb: parts per billion org/L: organisms/liter	<: less than MCL: Maximum Contaminant Level RL: Reporting Limit LSPC: result less than lower specification USPC: result greater than upper specification TIE: Tentatively Identified or Estimated VIOL: Violation (result exceeds MCL)	<b>Laboratory Contacts:</b> Lab Director: Mark Tolbert 470-524-0577 Inorganics: Carmen Pyles 470-524-0629 Metals: Shene Jones 470-524-0544 Organics: Mary Bowman 470-524-0639 GC Mass Spec: Ralph Schulz 470-524-0684 Microbiology: Mary Bowman 470-524-0709
---------------------------------------------------------------------------------------------------------------------------------------------------------------------------------------------------------------------	----------------------------------------------------------------------------------------------------------------------------------------------------------------------------------------------------------------------------------------------------------	--------------------------------------------------------------------------------------------------------------------------------------------------------------------------------------------------------------------------------------------------------------------------------



**GEORGIA DEPARTMENT OF NATURAL RESOURCES  
ENVIRONMENTAL PROTECTION DIVISION**

5804 Peachtree Corners East, Norcross, GA 30092-3403  
(678) 248-7384

**LABORATORY REPORT**

TO: Ga EPD Air Program EPD Air Prot Ambient Monitoring 4244 International Pkwy Ste 120 Atlanta, GA 30354	Date Collected: 4/23/2022 Time Collected: 0:00 Sample Collector: J. BRYANT Chlorination: Sample Type: Received By: HZ
	Date Received: 5/4/2022 Time Received: 10:52 AM Project: DATA STUDY Reporting Date: 6/27/2022 Received Temperature: 21.7 °C
Sample ID: AK98169 Facility Name: COVINGTON C2 Site ID: C2 Location ID: Location Descr:	

ANALYTE	PARAMETER CODE	EPA NOTE	METHOD	RESULT	UNITS	QUALIFIER RL	ANALYSIS		MCL or QC Range
							ANALYST	DATE	
<b>ETO by EPA Method TO-15 QC Batch 196380</b>									
Bromofluorobenzene(Surrogate QC Std.)			EPA TO-15	9.4731	ppbV		KL	5/10/2022	8 to 12
Ethylene Oxide			EPA TO-15	0.1081	ppbV	0.0232	KL	5/10/2022	
<b>ETO Results by EPA Method TO-15</b>									
Bromofluorobenzene(Surrogate QC Std.)			EPA TO-15	67.7612	ug/m3		KL	5/10/2022	57.22 to 85.84
Ethylene Oxide			EPA TO-15	0.1949	ug/m3	0.0418	KL	5/10/2022	

COMMENTS: \$ETO received in the lab at 6 in Hg.

ug/L: micrograms/liter  
 mg/L: milligrams/liter  
 mg/kg: milligrams/kilogram  
 ug/kg: micrograms/kilogram  
 ug/g: micrograms/gram  
 ppm: parts per million  
 ppb: parts per billion  
 org/L: organisms/liter

<: less than  
 MCL: Maximum Contaminant Level  
 RL: Reporting Limit  
 LSPC: result less than lower specification  
 USPC: result greater than upper specification  
 TIE: Tentatively Identified or Estimated  
 VIOL: Violation (result exceeds MCL)

**Laboratory Contacts:**

Lab Director: Mark Tolbert 470-524-0577  
 Inorganics: Carmen Pyles 470-524-0629  
 Metals: Shene Jones 470-524-0544  
 Organics: Mary Bowman 470-524-0639  
 GC Mass Spec: Ralph Schulz 470-524-0684  
 Microbiology: Mary Bowman 470-524-0709

**GEORGIA DEPARTMENT OF NATURAL RESOURCES  
ENVIRONMENTAL PROTECTION DIVISION**

5804 Peachtree Corners East, Norcross, GA 30092-3403  
(678) 248-7384

**LABORATORY REPORT**

TO: Ga EPD Air Program EPD Air Prot Ambient Monitoring 4244 International Pkwy Ste 120 Atlanta, GA 30354	Date Collected: 4/23/2022 Time Collected: 0:00 Sample Collector: J. BRYANT Chlorination: Sample Type: Received By: HZ
	Date Received: 5/4/2022 Time Received: 10:52 AM Project: DATA STUDY Reporting Date: 6/27/2022 Received Temperature: 21.5 °C
Sample ID: AK98170 Facility Name: COVINGTON C3-SA Site ID: C3-SA Location ID: Location Descr:	

ANALYTE	PARAMETER CODE	EPA NOTE	METHOD	RESULT	UNITS	QUALIFIER RL	ANALYSIS		MCL or QC Range
							ANALYST	DATE	
<b>ETO by EPA Method TO-15 QC Batch 196380</b>									
Bromofluorobenzene(Surrogate QC Std.)			EPA TO-15	9.4576	ppbV		KL	5/10/2022	8 to 12
Ethylene Oxide			EPA TO-15	0.0965	ppbV	0.0232	KL	5/10/2022	
<b>ETO Results by EPA Method TO-15</b>									
Bromofluorobenzene(Surrogate QC Std.)			EPA TO-15	67.6503	ug/m3		KL	5/10/2022	57.22 to 85.84
Ethylene Oxide			EPA TO-15	0.1739	ug/m3	0.0418	KL	5/10/2022	

COMMENTS: \$ETO received in the lab at 6 in Hg.

ug/L: micrograms/liter  
 mg/L: milligrams/liter  
 mg/kg: milligrams/kilogram  
 ug/kg: micrograms/kilogram  
 ug/g: micrograms/gram  
 ppm: parts per million  
 ppb: parts per billion  
 org/L: organisms/liter

<: less than  
 MCL: Maximum Contaminant Level  
 RL: Reporting Limit  
 LSPC: result less than lower specification  
 USPC: result greater than upper specification  
 TIE: Tentatively Identified or Estimated  
 VIOL: Violation (result exceeds MCL)

**Laboratory Contacts:**

Lab Director: Mark Tolbert 470-524-0577  
 Inorganics: Carmen Pyles 470-524-0629  
 Metals: Shene Jones 470-524-0544  
 Organics: Mary Bowman 470-524-0639  
 GC Mass Spec: Ralph Schulz 470-524-0684  
 Microbiology: Mary Bowman 470-524-0709

**GEORGIA DEPARTMENT OF NATURAL RESOURCES  
ENVIRONMENTAL PROTECTION DIVISION**

5804 Peachtree Corners East, Norcross, GA 30092-3403  
(678) 248-7384

**LABORATORY REPORT**

TO: Ga EPD Air Program EPD Air Prot Ambient Monitoring 4244 International Pkwy Ste 120 Atlanta, GA 30354	Date Collected: 4/20/2022 Time Collected: 0:00 Sample Collector: J. BRYANT Chlorination: Sample Type: Received By: HZ
	Date Received: 5/4/2022 Time Received: 10:52 AM Project: DATA STUDY Reporting Date: 6/27/2022 Received Temperature: 21.5 °C
Sample ID: AK98171 Facility Name: COVINGTON C2, C3-SA FB Site ID: C2 Location ID: Location Descr:	

ANALYTE	PARAMETER CODE	EPA NOTE	METHOD	RESULT	UNITS	QUALIFIER RL	ANALYSIS		MCL or QC Range
							ANALYST	DATE	
<b>ETO by EPA Method TO-15 QC Batch 196380</b>									
Bromofluorobenzene(Surrogate QC Std.)			EPA TO-15	9.9141	ppbV		KL	5/10/2022	8 to 12
Ethylene Oxide			EPA TO-15	0	ppbV	ND	0.0232	KL	5/10/2022
<b>ETO Results by EPA Method TO-15</b>									
Bromofluorobenzene(Surrogate QC Std.)			EPA TO-15	70.9157	ug/m3		KL	5/10/2022	57.22 to 85.84
Ethylene Oxide			EPA TO-15	0	ug/m3	ND	0.0418	KL	5/10/2022

COMMENTS: \$ETO received in the lab at 29 in Hg.

ug/L: micrograms/liter  
 mg/L: milligrams/liter  
 mg/kg: milligrams/kilogram  
 ug/kg: micrograms/kilogram  
 ug/g: micrograms/gram  
 ppm: parts per million  
 ppb: parts per billion  
 org/L: organisms/liter

<: less than  
 MCL: Maximum Contaminant Level  
 RL: Reporting Limit  
 LSPC: result less than lower specification  
 USPC: result greater than upper specification  
 TIE: Tentatively Identified or Estimated  
 VIOL: Violation (result exceeds MCL)

**Laboratory Contacts:**

Lab Director: Mark Tolbert 470-524-0577  
 Inorganics: Carmen Pyles 470-524-0629  
 Metals: Shene Jones 470-524-0544  
 Organics: Mary Bowman 470-524-0639  
 GC Mass Spec: Ralph Schulz 470-524-0684  
 Microbiology: Mary Bowman 470-524-0709

**GEORGIA DEPARTMENT OF NATURAL RESOURCES  
ENVIRONMENTAL PROTECTION DIVISION**

5804 Peachtree Corners East, Norcross, GA 30092-3403  
(678) 248-7384

**LABORATORY REPORT**

TO: Ga EPD Air Program EPD Air Prot Ambient Monitoring 4244 International Pkwy Ste 120 Atlanta, GA 30354	Date Collected: 4/23/2022 Time Collected: 0:00 Sample Collector: J. BRYANT Chlorination: Sample Type: Received By: HZ
	Date Received: 5/4/2022 Time Received: 10:52 AM Project: DATA STUDY Reporting Date: 6/27/2022 Received Temperature: 21.7 °C
Sample ID: AK98172 Facility Name: FULTON F2 Site ID: F2 Location ID: Location Descr:	

ANALYTE	PARAMETER CODE	EPA NOTE	METHOD	RESULT	UNITS	QUALIFIER RL	ANALYSIS		MCL or QC Range
							ANALYST	DATE	
<b>ETO by EPA Method TO-15 QC Batch 196380</b>									
Bromofluorobenzene(Surrogate QC Std.)			EPA TO-15	9.7625	ppbV		KL	5/10/2022	8 to 12
Ethylene Oxide			EPA TO-15	0.0524	ppbV	SQ	0.0232	KL	5/10/2022
<b>ETO Results by EPA Method TO-15</b>									
Bromofluorobenzene(Surrogate QC Std.)			EPA TO-15	69.8313	ug/m3		KL	5/10/2022	57.22 to 85.84
Ethylene Oxide			EPA TO-15	0.0945	ug/m3	SQ	0.0418	KL	5/10/2022

COMMENTS: \$ETO received in the lab at 6 in Hg.

ug/L: micrograms/liter  
 mg/L: milligrams/liter  
 mg/kg: milligrams/kilogram  
 ug/kg: micrograms/kilogram  
 ug/g: micrograms/gram  
 ppm: parts per million  
 ppb: parts per billion  
 org/L: organisms/liter

<: less than  
 MCL: Maximum Contaminant Level  
 RL: Reporting Limit  
 LSPC: result less than lower specification  
 USPC: result greater than upper specification  
 TIE: Tentatively Identified or Estimated  
 VIOL: Violation (result exceeds MCL)

**Laboratory Contacts:**

Lab Director: Mark Tolbert 470-524-0577  
 Inorganics: Carmen Pyles 470-524-0629  
 Metals: Shene Jones 470-524-0544  
 Organics: Mary Bowman 470-524-0639  
 GC Mass Spec: Ralph Schulz 470-524-0684  
 Microbiology: Mary Bowman 470-524-0709

**GEORGIA DEPARTMENT OF NATURAL RESOURCES  
ENVIRONMENTAL PROTECTION DIVISION**

5804 Peachtree Corners East, Norcross, GA 30092-3403  
(678) 248-7384

**LABORATORY REPORT**

TO: Ga EPD Air Program EPD Air Prot Ambient Monitoring 4244 International Pkwy Ste 120 Atlanta, GA 30354	Date Collected: 4/21/2022 Time Collected: 0:00 Sample Collector: J. BRYANT Chlorination: Sample Type: T Received By: HZ
	Date Received: 5/4/2022 Time Received: 10:52 AM Project: DATA STUDY Reporting Date: 6/27/2022 Received Temperature: 21.4 °C
Sample ID: AK98173 Facility Name: FULTON F2, F1-SA FB Site ID: F2 Location ID: QCCAN Location Descr:	

ANALYTE	PARAMETER CODE	EPA NOTE	METHOD	RESULT	UNITS	QUALIFIER RL	ANALYSIS		MCL or QC Range
							ANALYST	DATE	
<b>ETO by EPA Method TO-15 QC Batch 196380</b>									
Bromofluorobenzene(Surrogate QC Std.)			EPA TO-15	9.9881	ppbV		KL	5/10/2022	8 to 12
Ethylene Oxide			EPA TO-15	0	ppbV	ND	0.0232	KL	5/10/2022
<b>ETO Results by EPA Method TO-15</b>									
Bromofluorobenzene(Surrogate QC Std.)			EPA TO-15	71.445	ug/m3		KL	5/10/2022	57.22 to 85.84
Ethylene Oxide			EPA TO-15	0	ug/m3	ND	0.0418	KL	5/10/2022

COMMENTS: \$ETO received in the lab at 29 in Hg.

ug/L: micrograms/liter  
 mg/L: milligrams/liter  
 mg/kg: milligrams/kilogram  
 ug/kg: micrograms/kilogram  
 ug/g: micrograms/gram  
 ppm: parts per million  
 ppb: parts per billion  
 org/L: organisms/liter

<: less than  
 MCL: Maximum Contaminant Level  
 RL: Reporting Limit  
 LSPC: result less than lower specification  
 USPC: result greater than upper specification  
 TIE: Tentatively Identified or Estimated  
 VIOL: Violation (result exceeds MCL)

**Laboratory Contacts:**

Lab Director: Mark Tolbert 470-524-0577  
 Inorganics: Carmen Pyles 470-524-0629  
 Metals: Shene Jones 470-524-0544  
 Organics: Mary Bowman 470-524-0639  
 GC Mass Spec: Ralph Schulz 470-524-0684  
 Microbiology: Mary Bowman 470-524-0709

**GEORGIA DEPARTMENT OF NATURAL RESOURCES  
ENVIRONMENTAL PROTECTION DIVISION**

5804 Peachtree Corners East, Norcross, GA 30092-3403  
(678) 248-7384

**LABORATORY REPORT**

TO: Ga EPD Air Program EPD Air Prot Ambient Monitoring 4244 International Pkwy Ste 120 Atlanta, GA 30354	Date Collected: 4/23/2022 Time Collected: 0:00 Sample Collector: J. BRYANT Chlorination: Sample Type: Received By: HZ
	Date Received: 5/4/2022 Time Received: 10:52 AM Project: DATA STUDY Reporting Date: 6/27/2022 Received Temperature: 21.1 °C
Sample ID: AK98174 Facility Name: FULTON F1-SA Site ID: F1-SA Location ID: Location Descr:	

ANALYTE	PARAMETER CODE	EPA NOTE	METHOD	RESULT	UNITS	QUALIFIER RL	ANALYSIS		MCL or QC Range
							ANALYST	DATE	
<b>ETO by EPA Method TO-15 QC Batch 196380</b>									
Bromofluorobenzene(Surrogate QC Std.)			EPA TO-15	9.6869	ppbV		KL	5/10/2022	8 to 12
Ethylene Oxide			EPA TO-15	0.0789	ppbV	0.0232	KL	5/10/2022	
<b>ETO Results by EPA Method TO-15</b>									
Bromofluorobenzene(Surrogate QC Std.)			EPA TO-15	69.2905	ug/m3		KL	5/10/2022	57.22 to 85.84
Ethylene Oxide			EPA TO-15	0.1422	ug/m3	0.0418	KL	5/10/2022	

COMMENTS: \$ETO received in the lab at 5 in Hg.

ug/L: micrograms/liter  
 mg/L: milligrams/liter  
 mg/kg: milligrams/kilogram  
 ug/kg: micrograms/kilogram  
 ug/g: micrograms/gram  
 ppm: parts per million  
 ppb: parts per billion  
 org/L: organisms/liter

<: less than  
 MCL: Maximum Contaminant Level  
 RL: Reporting Limit  
 LSPC: result less than lower specification  
 USPC: result greater than upper specification  
 TIE: Tentatively Identified or Estimated  
 VIOL: Violation (result exceeds MCL)

**Laboratory Contacts:**

Lab Director: Mark Tolbert 470-524-0577  
 Inorganics: Carmen Pyles 470-524-0629  
 Metals: Shene Jones 470-524-0544  
 Organics: Mary Bowman 470-524-0639  
 GC Mass Spec: Ralph Schulz 470-524-0684  
 Microbiology: Mary Bowman 470-524-0709

**GEORGIA DEPARTMENT OF NATURAL RESOURCES  
ENVIRONMENTAL PROTECTION DIVISION**

5804 Peachtree Corners East, Norcross, GA 30092-3403  
(678) 248-7384

**LABORATORY REPORT**

TO: Ga EPD Air Program EPD Air Prot Ambient Monitoring 4244 International Pkwy Ste 120 Atlanta, GA 30354	Date Collected: 4/23/2022 Time Collected: 0:00 Sample Collector: C. KNOX Chlorination: Sample Type: Received By: HZ
	Date Received: 5/13/2022 Time Received: 1:27 PM Project: DATA STUDY Reporting Date: 6/27/2022 Received Temperature: 23.5 °C
Sample ID: AK98175 Facility Name: GENERAL COFFEE Site ID: 013-069-0002 Location ID: Location Descr:	

ANALYTE	PARAMETER CODE	EPA NOTE	METHOD	RESULT	UNITS	QUALIFIER RL	ANALYSIS		MCL or QC Range	
							ANALYST	DATE		
<b>ETO by EPA Method TO-15 QC Batch 196636</b>										
Bromofluorobenzene(Surrogate QC Std.)			EPA TO-15	9.4445	ppbV			HZ	5/17/2022	8 to 12
Ethylene Oxide			EPA TO-15	0.0793	ppbV	2	0.0232	HZ	5/17/2022	
<b>ETO Results by EPA Method TO-15</b>										
Bromofluorobenzene(Surrogate QC Std.)			EPA TO-15	67.5566	ug/m3			HZ	5/17/2022	57.22 to 85.84
Ethylene Oxide			EPA TO-15	0.1429	ug/m3	2	0.0418	HZ	5/17/2022	

COMMENTS: \$ETO received in the lab at 22 psi. Pressure difference of >0.5 psi between receipt from field and receipt in lab.

ug/L: micrograms/liter mg/L: milligrams/liter mg/kg: milligrams/kilogram ug/kg: micrograms/kilogram ug/g: micrograms/gram ppm: parts per million ppb: parts per billion org/L: organisms/liter	<: less than MCL: Maximum Contaminant Level RL: Reporting Limit LSPC: result less than lower specification USPC: result greater than upper specification TIE: Tentatively Identified or Estimated VIOL: Violation (result exceeds MCL)	<b>Laboratory Contacts:</b> Lab Director: Mark Tolbert 470-524-0577 Inorganics: Carmen Pyles 470-524-0629 Metals: Shene Jones 470-524-0544 Organics: Mary Bowman 470-524-0639 GC Mass Spec: Ralph Schulz 470-524-0684 Microbiology: Mary Bowman 470-524-0709
---------------------------------------------------------------------------------------------------------------------------------------------------------------------------------------------------------------------	----------------------------------------------------------------------------------------------------------------------------------------------------------------------------------------------------------------------------------------------------------	--------------------------------------------------------------------------------------------------------------------------------------------------------------------------------------------------------------------------------------------------------------------------------

**GEORGIA DEPARTMENT OF NATURAL RESOURCES  
ENVIRONMENTAL PROTECTION DIVISION**

5804 Peachtree Corners East, Norcross, GA 30092-3403  
(678) 248-7384

**LABORATORY REPORT**

TO: Ga EPD Air Program EPD Air Prot Ambient Monitoring 4244 International Pkwy Ste 120 Atlanta, GA 30354	Date Collected: 4/23/2022 Time Collected: 0:00 Sample Collector: H. STREET Canister Number: 110343 Canister Cleaned: 4/4/2022 Received By: HZ
	Date Received: 4/26/2022 Time Received: 11:42 AM Project: AIR Reporting Date: 6/27/2022 Received Temperature: 20.4 °C
Sample ID: AK98176 Facility Name: SOUTH DEKALB Site ID: 013-089-0002 Location ID: Location Descr:	

ANALYTE	PARAMETER CODE	EPA NOTE	METHOD	RESULT	UNITS	QUALIFIER RL	ANALYSIS		MCL or QC Range
							ANALYST	DATE	
<b>ETO by EPA Method TO-15 QC Batch 196107</b>									
Bromofluorobenzene(Surrogate QC Std.)			EPA TO-15	9.4427	ppbV		KL	4/28/2022	8 to 12
Ethylene Oxide			EPA TO-15	0.0647	ppbV	SQ	0.0232	KL	4/28/2022
<b>ETO Results by EPA Method TO-15</b>									
Bromofluorobenzene(Surrogate QC Std.)			EPA TO-15	67.5437	ug/m3		KL	4/28/2022	57.22 to 85.84
Ethylene Oxide			EPA TO-15	0.1166	ug/m3	SQ	0.0418	KL	4/28/2022

COMMENTS: \$ETO received in the lab at 5.2 psi.

ug/L: micrograms/liter  
 mg/L: milligrams/liter  
 mg/kg: milligrams/kilogram  
 ug/kg: micrograms/kilogram  
 ug/g: micrograms/gram  
 ppm: parts per million  
 ppb: parts per billion  
 org/L: organisms/liter

<: less than  
 MCL: Maximum Contaminant Level  
 RL: Reporting Limit  
 LSPC: result less than lower specification  
 USPC: result greater than upper specification  
 TIE: Tentatively Identified or Estimated  
 VIOL: Violation (result exceeds MCL)

**Laboratory Contacts:**

Lab Director: Mark Tolbert 470-524-0577  
 Inorganics: Carmen Pyles 470-524-0629  
 Metals: Shene Jones 470-524-0544  
 Organics: Mary Bowman 470-524-0639  
 GC Mass Spec: Ralph Schulz 470-524-0684  
 Microbiology: Mary Bowman 470-524-0709



**GEORGIA DEPARTMENT OF NATURAL RESOURCES  
ENVIRONMENTAL PROTECTION DIVISION**

5804 Peachtree Corners East, Norcross, GA 30092-3403  
(678) 248-7384

**LABORATORY REPORT**

TO: Ga EPD Air Program EPD Air Prot Ambient Monitoring 4244 International Pkwy Ste 120 Atlanta, GA 30354	Date Collected: 4/29/2022 Time Collected: 0:00 Sample Collector: H. STREET Canister Number: 114391 Canister Cleaned: 4/4/2022 Received By: HZ
	Date Received: 5/4/2022 Time Received: 10:52 AM Project: AIR Reporting Date: 6/27/2022 Received Temperature: 21.4 °C
Sample ID: AK98177 Facility Name: SOUTH DEKALB Site ID: 013-089-0002 Location ID: Location Descr:	

ANALYTE	PARAMETER CODE	EPA NOTE	METHOD	RESULT	UNITS	QUALIFIER RL	ANALYSIS		MCL or QC Range
							ANALYST	DATE	
<b>ETO by EPA Method TO-15 QC Batch 196380</b>									
Bromofluorobenzene(Surrogate QC Std.)			EPA TO-15	9.8079	ppbV		KL	5/11/2022	8 to 12
Ethylene Oxide			EPA TO-15	0.0754	ppbV	0.0232	KL	5/11/2022	
<b>ETO Results by EPA Method TO-15</b>									
Bromofluorobenzene(Surrogate QC Std.)			EPA TO-15	70.156	ug/m3		KL	5/11/2022	57.22 to 85.84
Ethylene Oxide			EPA TO-15	0.1359	ug/m3	0.0418	KL	5/11/2022	

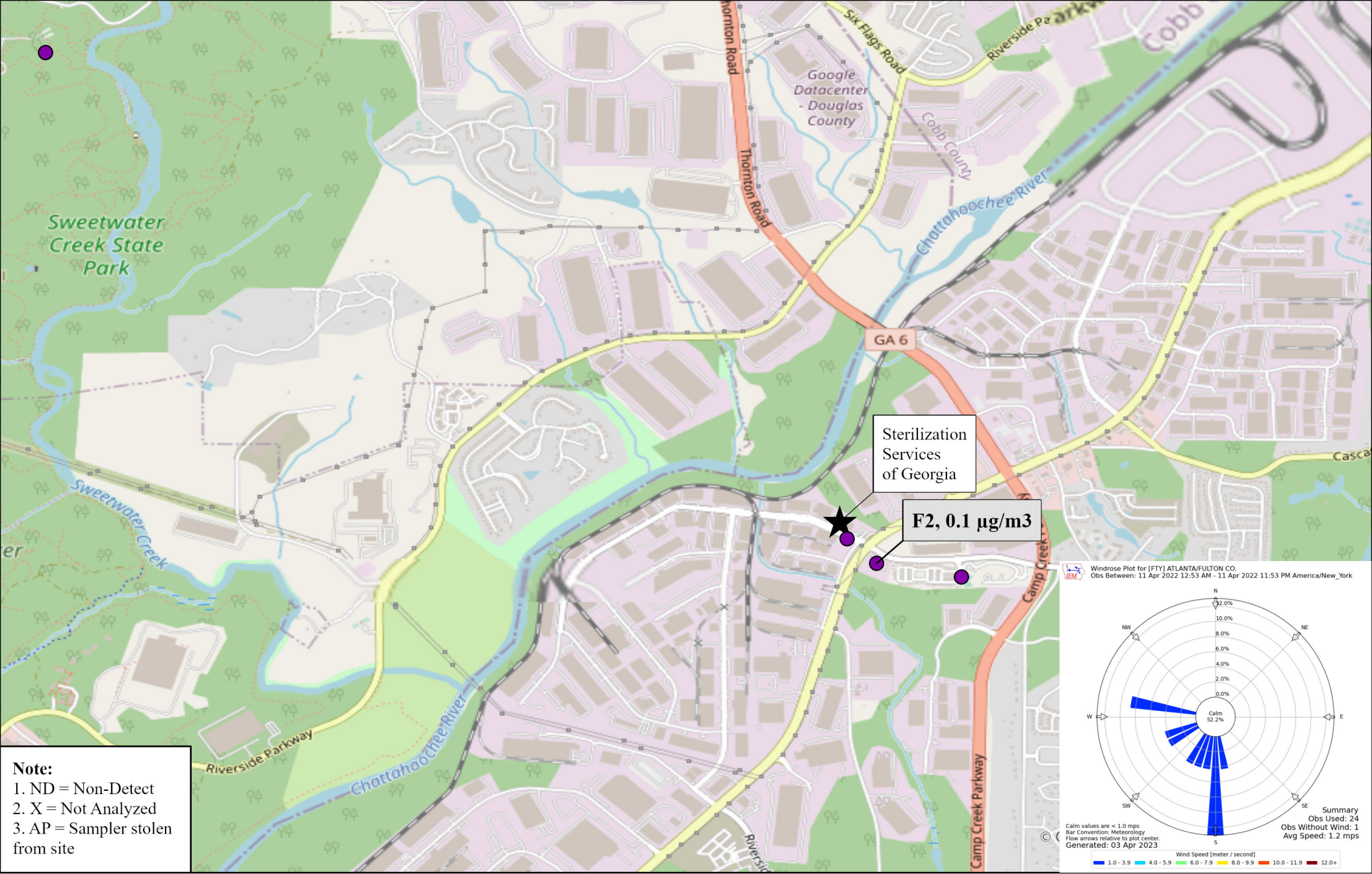
COMMENTS: \$ETO received in the lab at 5.6 psi.

ug/L: micrograms/liter  
 mg/L: milligrams/liter  
 mg/kg: milligrams/kilogram  
 ug/kg: micrograms/kilogram  
 ug/g: micrograms/gram  
 ppm: parts per million  
 ppb: parts per billion  
 org/L: organisms/liter

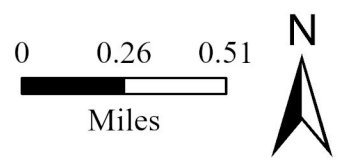
<: less than  
 MCL: Maximum Contaminant Level  
 RL: Reporting Limit  
 LSPC: result less than lower specification  
 USPC: result greater than upper specification  
 TIE: Tentatively Identified or Estimated  
 VIOL: Violation (result exceeds MCL)

**Laboratory Contacts:**

Lab Director: Mark Tolbert 470-524-0577  
 Inorganics: Carmen Pyles 470-524-0629  
 Metals: Shene Jones 470-524-0544  
 Organics: Mary Bowman 470-524-0639  
 GC Mass Spec: Ralph Schulz 470-524-0684  
 Microbiology: Mary Bowman 470-524-0709



**Note:**  
 1. ND = Non-Detect  
 2. X = Not Analyzed  
 3. AP = Sampler stolen from site



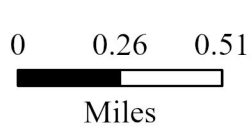
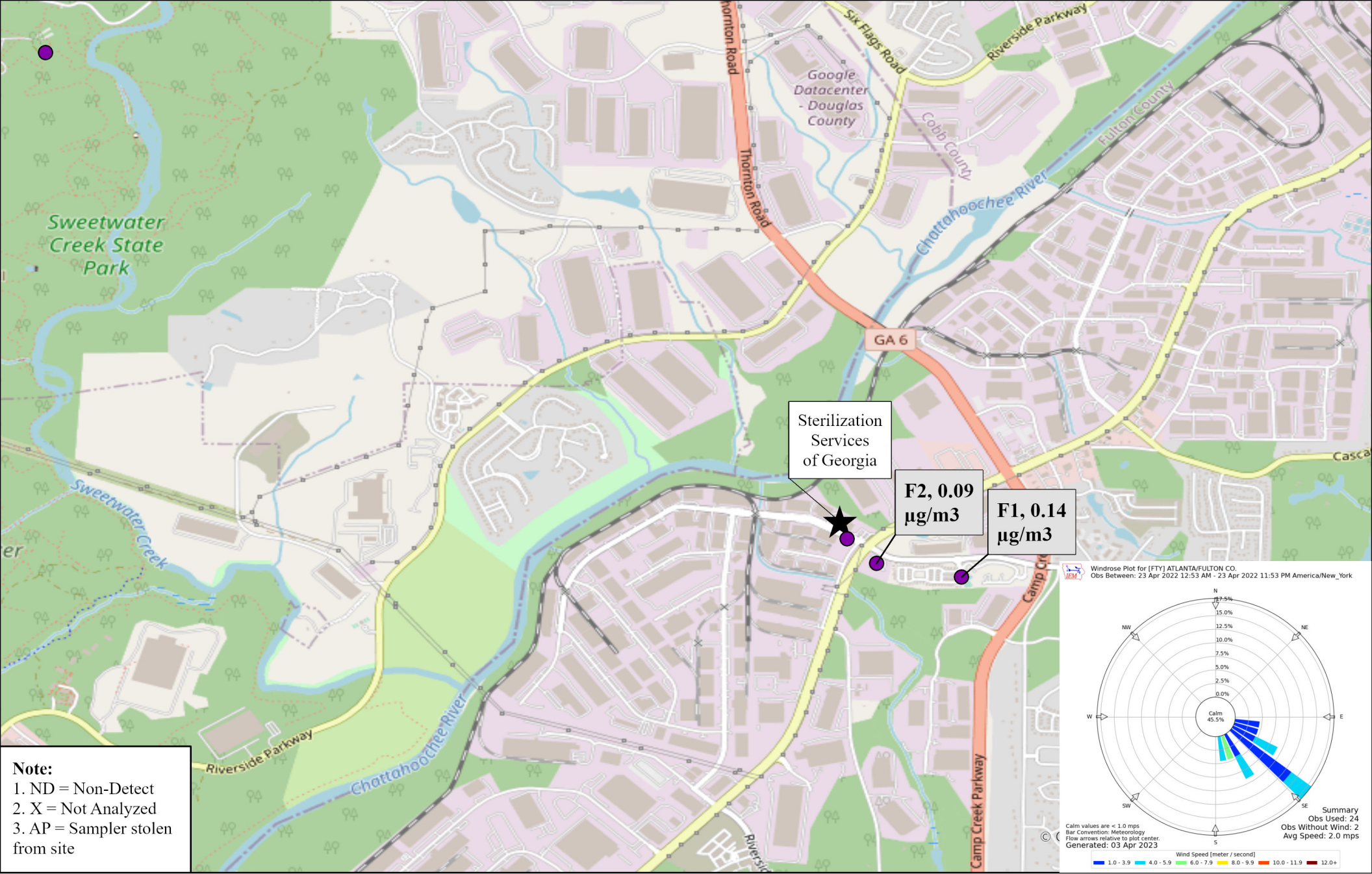
Site ID, Concentration ( $\mu\text{g}/\text{m}^3$ )

Ethylene Oxide Sampling  
 Fulton County, GA

04/11/2022  
 Sampled By: Georgia Environmental Protection Division  
 Analyzed By: Georgia Environmental Protection Division







Site ID, Concentration ( $\mu\text{g}/\text{m}^3$ )

Ethylene Oxide Sampling  
 Fulton County, GA

04/23/2022

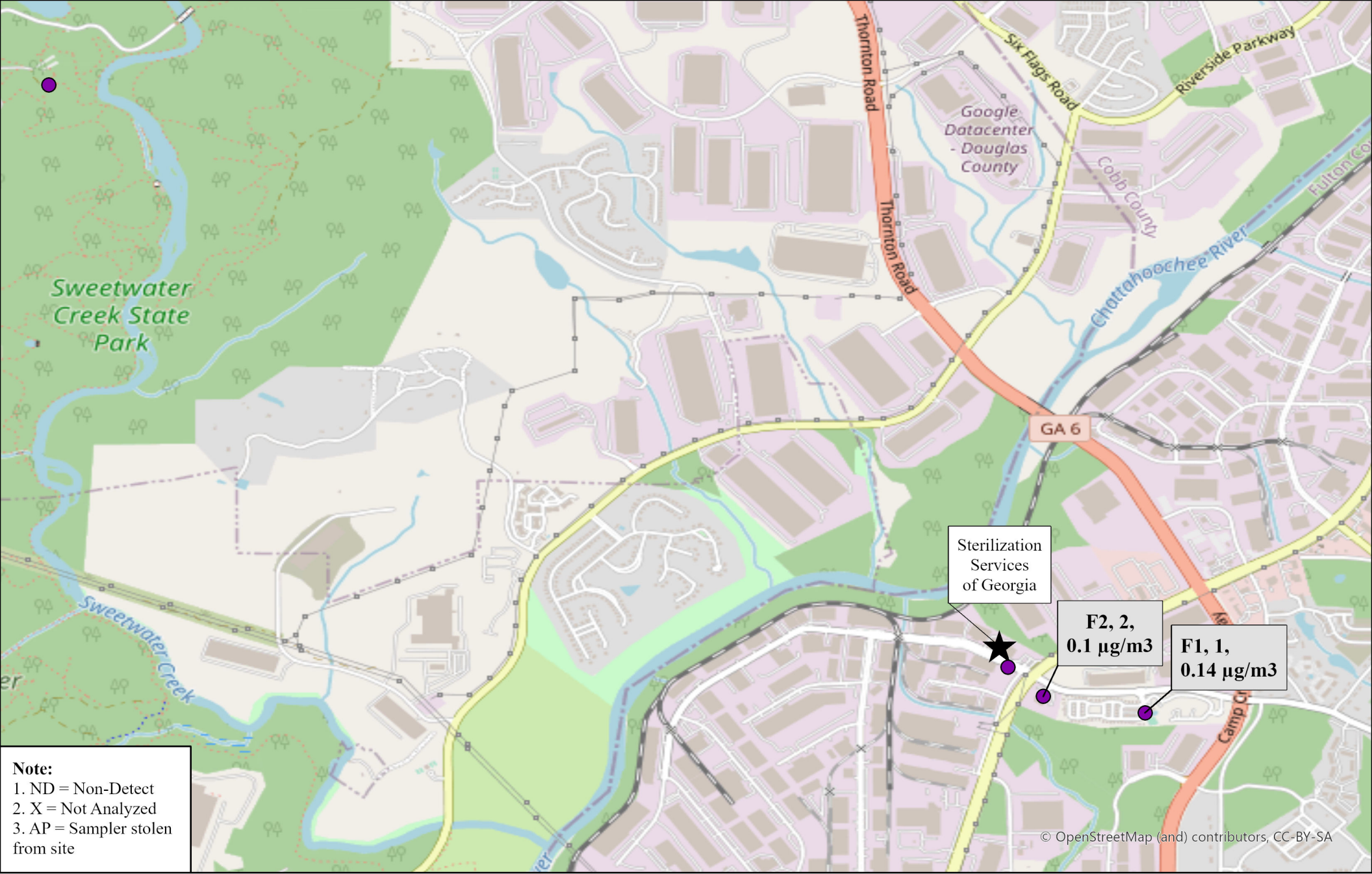
Sampled By: Georgia Environmental Protection Division  
 Analyzed By: Georgia Environmental Protection Division



**GEORGIA**  
 DEPARTMENT OF NATURAL RESOURCES

ENVIRONMENTAL PROTECTION DIVISION





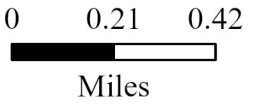
© OpenStreetMap (and) contributors, CC-BY-SA

Ethylene Oxide Sampling  
Fulton County, GA

April 2022 Site Average Values  
 Note: Not detectable values were included in average calculations as a value of 0.  
 Sampled By: Georgia Environmental Protection Division  
 Analyzed By: Georgia Environmental Protection Division



**Note:**  
 1. ND = Non-Detect  
 2. X = Not Analyzed  
 3. AP = Sampler stolen from site



**Site ID, Number of Samples,  
Concentration (µg/m<sup>3</sup>)**