



# GEORGIA

DEPARTMENT OF NATURAL RESOURCES

## ENVIRONMENTAL PROTECTION DIVISION

**Richard E. Dunn, Director**

**EPD Director's Office**

2 Martin Luther King, Jr. Drive  
Suite 1456, East Tower  
Atlanta, Georgia 30334  
404-656-4713

February 16, 2023

**MEMORANDUM**

To: Karen Hays, Air Branch Chief *KH*

Through: James Boylan, Assistant Branch Chief

Through: DeAnna Oser, Ambient Monitoring Program Manager

From: Jaime Gore, Operations 1 Unit Manager

RE: Fulton – February 10 – February 22, 2022, Sampling Results for Ethylene Oxide

Samples of Ethylene Oxide (EtO) were collected during the period of February 10 – February 22, 2022, by the Ambient Monitoring Program in the Fulton area to characterize the EtO concentration. Each of the samples were sent to the Georgia Environmental Protection Division Laboratory (EPD) for analysis. The Qualifier code of “2” was given to samples to indicate that the collection deviated from established procedures, but the integrity of the sample was not compromised. The Qualifier code of “SQ” indicates the analysis of the sample was above the method detection limit but below the practical quantification limit.

Location	Date	Qualifier	EtO Concentration ( $\mu\text{g}/\text{m}^3$ )
F2	02/10/2022		0.18
F2	02/22/2022		0.41
F2-QA	02/10/2022	2	0.16
F1-SA	02/22/2022	SQ, 2	0.10

If you have any questions, please let me know.

JCG

**GEORGIA DEPARTMENT OF NATURAL RESOURCES  
ENVIRONMENTAL PROTECTION DIVISION**

5804 Peachtree Corners East, Norcross, GA 30092-3403  
(678) 248-7384

**LABORATORY REPORT**

TO: Ga EPD Air Program EPD Air Prot Ambient Monitoring 4244 International Pkwy Ste 120 Atlanta, GA 30354	Date Collected: 2/4/2022 Time Collected: 0:00 Sample Collector: H. STREET Canister Number: 114384 Canister Cleaned: 1/10/2022 Received By: HZ
	Date Received: 2/8/2022 Time Received: 11:18 AM Project: AIR Reporting Date: 4/19/2022 Received Temperature: 21.6 °C
Sample ID: AK93263 Facility Name: SOUTH DEKALB Site ID: 013-089-0002 Location ID: QCCAN Location Descr:	

ANALYTE	PARAMETER CODE	EPA NOTE	METHOD	RESULT	UNITS	QUALIFIER RL	ANALYSIS		MCL or QC Range
							ANALYST	DATE	
<b>ETO by EPA Method TO-15 QC Batch 194894</b>									
Bromofluorobenzene(Surrogate QC Std.)			EPA TO-15	9.5710	ppbV		KL	2/10/2022	8 to 12
Ethylene Oxide			EPA TO-15	0.0463	ppbV	SQ	0.0232	KL	2/10/2022
<b>ETO Results by EPA Method TO-15</b>									
Bromofluorobenzene(Surrogate QC Std.)			EPA TO-15	68.4615	ug/m3		KL	2/10/2022	57.22 to 85.84
Ethylene Oxide			EPA TO-15	0.0835	ug/m3	SQ	0.0418	KL	2/10/2022

COMMENTS: \$ETO received in the lab at 5 psi.

ug/L: micrograms/liter  
 mg/L: milligrams/liter  
 mg/kg: milligrams/kilogram  
 ug/kg: micrograms/kilogram  
 ug/g: micrograms/gram  
 ppm: parts per million  
 ppb: parts per billion  
 org/L: organisms/liter

<: less than  
 MCL: Maximum Contaminant Level  
 RL: Reporting Limit  
 LSPC: result less than lower specification  
 USPC: result greater than upper specification  
 TIE: Tentatively Identified or Estimated  
 VIOL: Violation (result exceeds MCL)

**Laboratory Contacts:**

Lab Director: Mark Tolbert 470-524-0577  
 Inorganics: Carmen Pyles 470-524-0629  
 Metals: Shene Jones 470-524-0544  
 Organics: Mary Bowman 470-524-0639  
 GC Mass Spec: Ralph Schulz 470-524-0684  
 Microbiology: Mary Bowman 470-524-0709

**GEORGIA DEPARTMENT OF NATURAL RESOURCES  
ENVIRONMENTAL PROTECTION DIVISION**

5804 Peachtree Corners East, Norcross, GA 30092-3403  
(678) 248-7384

**LABORATORY REPORT**

TO: Ga EPD Air Program EPD Air Prot Ambient Monitoring 4244 International Pkwy Ste 120 Atlanta, GA 30354	Date Collected: 2/10/2022 Time Collected: 0:00 Sample Collector: J. BRYANT Chlorination: Sample Type: Received By: HZ
	Date Received: 2/24/2022 Time Received: 9:57 AM Project: DATA STUDY Reporting Date: 4/19/2022 Received Temperature: 23.2 °C
Sample ID: AK94055 Facility Name: COBB S2-QA Site ID: S2-QA Location ID: QCCAN Location Descr:	

ANALYTE	PARAMETER CODE	EPA NOTE	METHOD	RESULT	UNITS	QUALIFIER RL	ANALYSIS		MCL or QC Range
							ANALYST	DATE	
<b>ETO by EPA Method TO-15 QC Batch 195107</b>									
Bromofluorobenzene(Surrogate QC Std.)			EPA TO-15	9.3032	ppbV		KL	2/25/2022	8 to 12
Ethylene Oxide			EPA TO-15	0.0949	ppbV	0.0232	KL	2/25/2022	
<b>ETO Results by EPA Method TO-15</b>									
Bromofluorobenzene(Surrogate QC Std.)			EPA TO-15	66.5459	ug/m3		KL	2/25/2022	57.22 to 85.84
Ethylene Oxide			EPA TO-15	0.1711	ug/m3	0.0418	KL	2/25/2022	

COMMENTS: \$ETO received in the lab at 3.5 in Hg.

ug/L: micrograms/liter  
 mg/L: milligrams/liter  
 mg/kg: milligrams/kilogram  
 ug/kg: micrograms/kilogram  
 ug/g: micrograms/gram  
 ppm: parts per million  
 ppb: parts per billion  
 org/L: organisms/liter

<: less than  
 MCL: Maximum Contaminant Level  
 RL: Reporting Limit  
 LSPC: result less than lower specification  
 USPC: result greater than upper specification  
 TIE: Tentatively Identified or Estimated  
 VIOL: Violation (result exceeds MCL)

**Laboratory Contacts:**

Lab Director: Mark Tolbert 470-524-0577  
 Inorganics: Carmen Pyles 470-524-0629  
 Metals: Shene Jones 470-524-0544  
 Organics: Mary Bowman 470-524-0639  
 GC Mass Spec: Ralph Schulz 470-524-0684  
 Microbiology: Mary Bowman 470-524-0709

**GEORGIA DEPARTMENT OF NATURAL RESOURCES  
ENVIRONMENTAL PROTECTION DIVISION**

5804 Peachtree Corners East, Norcross, GA 30092-3403  
(678) 248-7384

**LABORATORY REPORT**

TO: Ga EPD Air Program EPD Air Prot Ambient Monitoring 4244 International Pkwy Ste 120 Atlanta, GA 30354	Date Collected: 2/22/2022 Time Collected: 0:00 Sample Collector: J. BRYANT Chlorination: Sample Type: Received By: HZ
	Date Received: 3/9/2022 Time Received: 11:19 AM Project: DATA STUDY Reporting Date: 4/19/2022 Received Temperature: 20.1 °C
Sample ID: AK94056 Facility Name: COBB S7 Site ID: S7 Location ID: Location Descr:	

ANALYTE	PARAMETER CODE	EPA NOTE	METHOD	RESULT	UNITS	QUALIFIER RL	ANALYSIS		MCL or QC Range
							ANALYST	DATE	
<b>ETO by EPA Method TO-15 QC Batch 195358</b>									
Bromofluorobenzene(Surrogate QC Std.)			EPA TO-15	9.2374	ppbV		KL	3/11/2022	8 to 12
Ethylene Oxide			EPA TO-15	0.0593	ppbV	SQ	0.0232	KL	3/11/2022
<b>ETO Results by EPA Method TO-15</b>									
Bromofluorobenzene(Surrogate QC Std.)			EPA TO-15	66.0752	ug/m3		KL	3/11/2022	57.22 to 85.84
Ethylene Oxide			EPA TO-15	0.1069	ug/m3	SQ	0.0418	KL	3/11/2022

COMMENTS: \$ETO received in the lab at 4.5 in Hg.

ug/L: micrograms/liter  
 mg/L: milligrams/liter  
 mg/kg: milligrams/kilogram  
 ug/kg: micrograms/kilogram  
 ug/g: micrograms/gram  
 ppm: parts per million  
 ppb: parts per billion  
 org/L: organisms/liter

<: less than  
 MCL: Maximum Contaminant Level  
 RL: Reporting Limit  
 LSPC: result less than lower specification  
 USPC: result greater than upper specification  
 TIE: Tentatively Identified or Estimated  
 VIOL: Violation (result exceeds MCL)

**Laboratory Contacts:**

Lab Director: Mark Tolbert 470-524-0577  
 Inorganics: Carmen Pyles 470-524-0629  
 Metals: Shene Jones 470-524-0544  
 Organics: Mary Bowman 470-524-0639  
 GC Mass Spec: Ralph Schulz 470-524-0684  
 Microbiology: Mary Bowman 470-524-0709

**GEORGIA DEPARTMENT OF NATURAL RESOURCES  
ENVIRONMENTAL PROTECTION DIVISION**

5804 Peachtree Corners East, Norcross, GA 30092-3403  
(678) 248-7384

**LABORATORY REPORT**

TO: Ga EPD Air Program EPD Air Prot Ambient Monitoring 4244 International Pkwy Ste 120 Atlanta, GA 30354	Date Collected: 2/22/2022 Time Collected: 0:00 Sample Collector: J. BRYANT Chlorination: Sample Type: Received By: HZ
	Date Received: 3/9/2022 Time Received: 11:19 AM Project: DATA STUDY Reporting Date: 4/19/2022 Received Temperature: 20.0 °C
Sample ID: AK94057 Facility Name: COVINGTON C3 Site ID: C3 Location ID: Location Descr:	

ANALYTE	PARAMETER CODE	EPA NOTE	METHOD	RESULT	UNITS	QUALIFIER RL	ANALYSIS		MCL or QC Range
							ANALYST	DATE	
<b>ETO by EPA Method TO-15 QC Batch 195358</b>									
Bromofluorobenzene(Surrogate QC Std.)			EPA TO-15	9.6118	ppbV		KL	3/11/2022	8 to 12
Ethylene Oxide			EPA TO-15	0.0774	ppbV	0.0232	KL	3/11/2022	
<b>ETO Results by EPA Method TO-15</b>									
Bromofluorobenzene(Surrogate QC Std.)			EPA TO-15	68.7533	ug/m3		KL	3/11/2022	57.22 to 85.84
Ethylene Oxide			EPA TO-15	0.1395	ug/m3	0.0418	KL	3/11/2022	

COMMENTS: \$ETO received in the lab at 6 in Hg.

ug/L: micrograms/liter  
 mg/L: milligrams/liter  
 mg/kg: milligrams/kilogram  
 ug/kg: micrograms/kilogram  
 ug/g: micrograms/gram  
 ppm: parts per million  
 ppb: parts per billion  
 org/L: organisms/liter

<: less than  
 MCL: Maximum Contaminant Level  
 RL: Reporting Limit  
 LSPC: result less than lower specification  
 USPC: result greater than upper specification  
 TIE: Tentatively Identified or Estimated  
 VIOL: Violation (result exceeds MCL)

**Laboratory Contacts:**

Lab Director: Mark Tolbert 470-524-0577  
 Inorganics: Carmen Pyles 470-524-0629  
 Metals: Shene Jones 470-524-0544  
 Organics: Mary Bowman 470-524-0639  
 GC Mass Spec: Ralph Schulz 470-524-0684  
 Microbiology: Mary Bowman 470-524-0709

**GEORGIA DEPARTMENT OF NATURAL RESOURCES  
ENVIRONMENTAL PROTECTION DIVISION**

5804 Peachtree Corners East, Norcross, GA 30092-3403  
(678) 248-7384

**LABORATORY REPORT**

TO: Ga EPD Air Program EPD Air Prot Ambient Monitoring 4244 International Pkwy Ste 120 Atlanta, GA 30354	Date Collected: 2/16/2022 Time Collected: 0:00 Sample Collector: H. STREET Canister Number: 110322 Canister Cleaned: 1/25/2022 Received By: HZ Date Received: 2/21/2022 Time Received: 11:13 AM Project: AIR Reporting Date: 4/19/2022 Received Temperature: 19.7 °C
Sample ID: AK94059 Facility Name: SOUTH DEKALB Site ID: 013-089-0002 Location ID: Location Descr:	

ANALYTE	PARAMETER CODE	EPA NOTE	METHOD	RESULT	UNITS	QUALIFIER RL	ANALYSIS		MCL or QC Range
							ANALYST	DATE	
<b>ETO by EPA Method TO-15 QC Batch 195060</b>									
Bromofluorobenzene(Surrogate QC Std.)			EPA TO-15	9.0602	ppbV	0.0001	KL	2/23/2022	8 to 12
Ethylene Oxide			EPA TO-15	0.0672	ppbV	SQ 0.0232	KL	2/23/2022	
<b>ETO Results by EPA Method TO-15</b>									
Bromofluorobenzene(Surrogate QC Std.)			EPA TO-15	64.8077	ug/m3		KL	2/23/2022	57.22 to 85.84
Ethylene Oxide			EPA TO-15	0.1211	ug/m3	SQ 0.0418	KL	2/23/2022	

COMMENTS: \$ETO received in the lab at 5.4 psi.

ug/L: micrograms/liter  
 mg/L: milligrams/liter  
 mg/kg: milligrams/kilogram  
 ug/kg: micrograms/kilogram  
 ug/g: micrograms/gram  
 ppm: parts per million  
 ppb: parts per billion  
 org/L: organisms/liter

<: less than  
 MCL: Maximum Contaminant Level  
 RL: Reporting Limit  
 LSPC: result less than lower specification  
 USPC: result greater than upper specification  
 TIE: Tentatively Identified or Estimated  
 VIOL: Violation (result exceeds MCL)

**Laboratory Contacts:**

Lab Director: Mark Tolbert 470-524-0577  
 Inorganics: Carmen Pyles 470-524-0629  
 Metals: Shene Jones 470-524-0544  
 Organics: Mary Bowman 470-524-0639  
 GC Mass Spec: Ralph Schulz 470-524-0684  
 Microbiology: Mary Bowman 470-524-0709

**GEORGIA DEPARTMENT OF NATURAL RESOURCES  
ENVIRONMENTAL PROTECTION DIVISION**

5804 Peachtree Corners East, Norcross, GA 30092-3403  
(678) 248-7384

**LABORATORY REPORT**

TO: Ga EPD Air Program EPD Air Prot Ambient Monitoring 4244 International Pkwy Ste 120 Atlanta, GA 30354	Date Collected: 2/22/2022 Time Collected: 0:00 Sample Collector: J. BRYANT Chlorination: Sample Type: Received By: HZ
	Date Received: 3/9/2022 Time Received: 11:19 AM Project: DATA STUDY Reporting Date: 4/19/2022 Received Temperature: 20.0 °C
Sample ID: AK94060 Facility Name: COBB S6 Site ID: S6 Location ID: Location Descr:	

ANALYTE	PARAMETER CODE	EPA NOTE	METHOD	RESULT	UNITS	QUALIFIER RL	ANALYSIS		MCL or QC Range
							ANALYST	DATE	
<b>ETO by EPA Method TO-15 QC Batch 195358</b>									
Bromofluorobenzene(Surrogate QC Std.)			EPA TO-15	9.2754	ppbV		KL	3/11/2022	8 to 12
Ethylene Oxide			EPA TO-15	0.0873	ppbV	0.0232	KL	3/11/2022	
<b>ETO Results by EPA Method TO-15</b>									
Bromofluorobenzene(Surrogate QC Std.)			EPA TO-15	66.347	ug/m3		KL	3/11/2022	57.22 to 85.84
Ethylene Oxide			EPA TO-15	0.1574	ug/m3	0.0418	KL	3/11/2022	

COMMENTS: \$ETO received in the lab at 5 in Hg.

ug/L: micrograms/liter  
 mg/L: milligrams/liter  
 mg/kg: milligrams/kilogram  
 ug/kg: micrograms/kilogram  
 ug/g: micrograms/gram  
 ppm: parts per million  
 ppb: parts per billion  
 org/L: organisms/liter

<: less than  
 MCL: Maximum Contaminant Level  
 RL: Reporting Limit  
 LSPC: result less than lower specification  
 USPC: result greater than upper specification  
 TIE: Tentatively Identified or Estimated  
 VIOL: Violation (result exceeds MCL)

**Laboratory Contacts:**

Lab Director: Mark Tolbert 470-524-0577  
 Inorganics: Carmen Pyles 470-524-0629  
 Metals: Shene Jones 470-524-0544  
 Organics: Mary Bowman 470-524-0639  
 GC Mass Spec: Ralph Schulz 470-524-0684  
 Microbiology: Mary Bowman 470-524-0709

**GEORGIA DEPARTMENT OF NATURAL RESOURCES  
ENVIRONMENTAL PROTECTION DIVISION**

5804 Peachtree Corners East, Norcross, GA 30092-3403  
(678) 248-7384

**LABORATORY REPORT**

TO: Ga EPD Air Program EPD Air Prot Ambient Monitoring 4244 International Pkwy Ste 120 Atlanta, GA 30354	Date Collected: 2/21/2022 Time Collected: 0:00 Sample Collector: J.BRYANT Chlorination: Sample Type: T Received By: HZ
	Date Received: 3/9/2022 Time Received: 11:19 AM Project: DATA STUDY Reporting Date: 4/19/2022 Received Temperature: 20.2 °C
Sample ID: AK94061 Facility Name: COBB S2 S6 S7 FB Site ID: S2 Location ID: Location Descr:	

ANALYTE	PARAMETER CODE	EPA NOTE	METHOD	RESULT	UNITS	QUALIFIER RL	ANALYSIS		MCL or QC Range
							ANALYST	DATE	
<b>ETO by EPA Method TO-15 QC Batch 195358</b>									
Bromofluorobenzene(Surrogate QC Std.)			EPA TO-15	9.6905	ppbV		KL	3/11/2022	8 to 12
Ethylene Oxide			EPA TO-15	0	ppbV	ND	0.0232	KL	3/11/2022
<b>ETO Results by EPA Method TO-15</b>									
Bromofluorobenzene(Surrogate QC Std.)			EPA TO-15	69.3163	ug/m3		KL	3/11/2022	57.22 to 85.84
Ethylene Oxide			EPA TO-15	0	ug/m3	ND	0.0418	KL	3/11/2022

COMMENTS: \$ETO received in the lab at 29 in Hg.

ug/L: micrograms/liter  
 mg/L: milligrams/liter  
 mg/kg: milligrams/kilogram  
 ug/kg: micrograms/kilogram  
 ug/g: micrograms/gram  
 ppm: parts per million  
 ppb: parts per billion  
 org/L: organisms/liter

<: less than  
 MCL: Maximum Contaminant Level  
 RL: Reporting Limit  
 LSPC: result less than lower specification  
 USPC: result greater than upper specification  
 TIE: Tentatively Identified or Estimated  
 VIOL: Violation (result exceeds MCL)

**Laboratory Contacts:**

Lab Director: Mark Tolbert 470-524-0577  
 Inorganics: Carmen Pyles 470-524-0629  
 Metals: Shene Jones 470-524-0544  
 Organics: Mary Bowman 470-524-0639  
 GC Mass Spec: Ralph Schulz 470-524-0684  
 Microbiology: Mary Bowman 470-524-0709



**GEORGIA DEPARTMENT OF NATURAL RESOURCES  
ENVIRONMENTAL PROTECTION DIVISION**

5804 Peachtree Corners East, Norcross, GA 30092-3403  
(678) 248-7384

**LABORATORY REPORT**

TO: Ga EPD Air Program EPD Air Prot Ambient Monitoring 4244 International Pkwy Ste 120 Atlanta, GA 30354	Date Collected: 2/22/2022 Time Collected: 0:00 Sample Collector: J. BRYANT Chlorination: Sample Type: Received By: HZ
	Date Received: 3/9/2022 Time Received: 11:19 AM Project: DATA STUDY Reporting Date: 4/19/2022 Received Temperature: 20.0 °C
Sample ID: AK94062 Facility Name: COBB S2 Site ID: S2 Location ID: Location Descr:	

ANALYTE	PARAMETER CODE	EPA NOTE	METHOD	RESULT	UNITS	QUALIFIER RL	ANALYSIS		MCL or QC Range
							ANALYST	DATE	
<b>ETO by EPA Method TO-15 QC Batch 195358</b>									
Bromofluorobenzene(Surrogate QC Std.)			EPA TO-15	9.1582	ppbV		KL	3/11/2022	8 to 12
Ethylene Oxide			EPA TO-15	0.0601	ppbV	SQ	0.0232	KL	3/11/2022
<b>ETO Results by EPA Method TO-15</b>									
Bromofluorobenzene(Surrogate QC Std.)			EPA TO-15	65.5087	ug/m3		KL	3/11/2022	57.22 to 85.84
Ethylene Oxide			EPA TO-15	0.1083	ug/m3	SQ	0.0418	KL	3/11/2022

COMMENTS: \$ETO received in the lab at 4 in Hg.

ug/L: micrograms/liter  
 mg/L: milligrams/liter  
 mg/kg: milligrams/kilogram  
 ug/kg: micrograms/kilogram  
 ug/g: micrograms/gram  
 ppm: parts per million  
 ppb: parts per billion  
 org/L: organisms/liter

<: less than  
 MCL: Maximum Contaminant Level  
 RL: Reporting Limit  
 LSPC: result less than lower specification  
 USPC: result greater than upper specification  
 TIE: Tentatively Identified or Estimated  
 VIOL: Violation (result exceeds MCL)

**Laboratory Contacts:**

Lab Director: Mark Tolbert 470-524-0577  
 Inorganics: Carmen Pyles 470-524-0629  
 Metals: Shene Jones 470-524-0544  
 Organics: Mary Bowman 470-524-0639  
 GC Mass Spec: Ralph Schulz 470-524-0684  
 Microbiology: Mary Bowman 470-524-0709

**GEORGIA DEPARTMENT OF NATURAL RESOURCES  
ENVIRONMENTAL PROTECTION DIVISION**

5804 Peachtree Corners East, Norcross, GA 30092-3403  
(678) 248-7384

**LABORATORY REPORT**

TO: Ga EPD Air Program EPD Air Prot Ambient Monitoring 4244 International Pkwy Ste 120 Atlanta, GA 30354	Date Collected: 2/10/2022 Time Collected: 0:00 Sample Collector: J. BRYANT Chlorination: Sample Type: Received By: HZ
	Date Received: 2/24/2022 Time Received: 9:57 AM Project: DATA STUDY Reporting Date: 4/19/2022 Received Temperature: 23.4 °C
Sample ID: AK94063 Facility Name: COBB S2 Site ID: S2 Location ID: QCCAN Location Descr:	

ANALYTE	PARAMETER CODE	EPA NOTE	METHOD	RESULT	UNITS	QUALIFIER RL	ANALYSIS		MCL or QC Range
							ANALYST	DATE	
<b>ETO by EPA Method TO-15 QC Batch 195107</b>									
Bromofluorobenzene(Surrogate QC Std.)			EPA TO-15	9.6078	ppbV		KL	2/25/2022	8 to 12
Ethylene Oxide			EPA TO-15	0.0770	ppbV	0.0232	KL	2/25/2022	
<b>ETO Results by EPA Method TO-15</b>									
Bromofluorobenzene(Surrogate QC Std.)			EPA TO-15	68.7247	ug/m3		KL	2/25/2022	57.22 to 85.84
Ethylene Oxide			EPA TO-15	0.1388	ug/m3	0.0418	KL	2/25/2022	

COMMENTS: \$ETO received in the lab at 3 in Hg.

ug/L: micrograms/liter  
 mg/L: milligrams/liter  
 mg/kg: milligrams/kilogram  
 ug/kg: micrograms/kilogram  
 ug/g: micrograms/gram  
 ppm: parts per million  
 ppb: parts per billion  
 org/L: organisms/liter

<: less than  
 MCL: Maximum Contaminant Level  
 RL: Reporting Limit  
 LSPC: result less than lower specification  
 USPC: result greater than upper specification  
 TIE: Tentatively Identified or Estimated  
 VIOL: Violation (result exceeds MCL)

**Laboratory Contacts:**

Lab Director: Mark Tolbert 470-524-0577  
 Inorganics: Carmen Pyles 470-524-0629  
 Metals: Shene Jones 470-524-0544  
 Organics: Mary Bowman 470-524-0639  
 GC Mass Spec: Ralph Schulz 470-524-0684  
 Microbiology: Mary Bowman 470-524-0709

**GEORGIA DEPARTMENT OF NATURAL RESOURCES  
ENVIRONMENTAL PROTECTION DIVISION**

5804 Peachtree Corners East, Norcross, GA 30092-3403  
(678) 248-7384

**LABORATORY REPORT**

TO: Ga EPD Air Program EPD Air Prot Ambient Monitoring 4244 International Pkwy Ste 120 Atlanta, GA 30354	Date Collected: 2/10/2022 Time Collected: 0:00 Sample Collector: C. KNOX Chlorination: Sample Type: Received By: HZ
	Date Received: 2/17/2022 Time Received: 7:59 AM Project: DATA STUDY Reporting Date: 4/19/2022 Received Temperature: 23.5 °C
Sample ID: AK94064 Facility Name: DOUGLAS GENERAL COFFEE Site ID: 013-069-0002 Location ID: Location Descr:	

ANALYTE	PARAMETER CODE	EPA NOTE	METHOD	RESULT	UNITS	QUALIFIER RL	ANALYSIS		MCL or QC Range
							ANALYST	DATE	
<b>ETO by EPA Method TO-15 QC Batch 194988</b>									
Bromofluorobenzene(Surrogate QC Std.)			EPA TO-15	9.7272	ppbV		KL	2/17/2022	8 to 12
Ethylene Oxide			EPA TO-15	0.0330	ppbV	SQ 2	0.0232	KL	2/17/2022
<b>ETO Results by EPA Method TO-15</b>									
Bromofluorobenzene(Surrogate QC Std.)			EPA TO-15	69.5788	ug/m3		KL	2/17/2022	57.22 to 85.84
Ethylene Oxide			EPA TO-15	0.0595	ug/m3	SQ 2	0.0418	KL	2/17/2022

COMMENTS: \$ETO received in the lab at 24 psi. Pressure difference of >0.5 psi between receipt from field and receipt in lab.

ug/L: micrograms/liter mg/L: milligrams/liter mg/kg: milligrams/kilogram ug/kg: micrograms/kilogram ug/g: micrograms/gram ppm: parts per million ppb: parts per billion org/L: organisms/liter	<: less than MCL: Maximum Contaminant Level RL: Reporting Limit LSPC: result less than lower specification USPC: result greater than upper specification TIE: Tentatively Identified or Estimated VIOL: Violation (result exceeds MCL)	<b>Laboratory Contacts:</b> Lab Director: Mark Tolbert 470-524-0577 Inorganics: Carmen Pyles 470-524-0629 Metals: Shene Jones 470-524-0544 Organics: Mary Bowman 470-524-0639 GC Mass Spec: Ralph Schulz 470-524-0684 Microbiology: Mary Bowman 470-524-0709
---	--	--

**GEORGIA DEPARTMENT OF NATURAL RESOURCES  
ENVIRONMENTAL PROTECTION DIVISION**

5804 Peachtree Corners East, Norcross, GA 30092-3403  
(678) 248-7384

**LABORATORY REPORT**

TO: Ga EPD Air Program EPD Air Prot Ambient Monitoring 4244 International Pkwy Ste 120 Atlanta, GA 30354	Date Collected: 2/10/2022 Time Collected: 0:00 Sample Collector: J. BRYANT Chlorination: Sample Type: Received By: HZ
	Date Received: 2/24/2022 Time Received: 9:57 AM Project: DATA STUDY Reporting Date: 4/19/2022 Received Temperature: 23.1 °C
Sample ID: AK94065 Facility Name: COVINGTON C2-QA Site ID: C2-QA Location ID: Location Descr:	

ANALYTE	PARAMETER CODE	EPA NOTE	METHOD	RESULT	UNITS	QUALIFIER RL	ANALYSIS		MCL or QC Range
							ANALYST	DATE	
<b>ETO by EPA Method TO-15 QC Batch 195107</b>									
Bromofluorobenzene(Surrogate QC Std.)			EPA TO-15	9.6220	ppbV		KL	2/25/2022	8 to 12
Ethylene Oxide			EPA TO-15	0.1061	ppbV	0.0232	KL	2/25/2022	
<b>ETO Results by EPA Method TO-15</b>									
Bromofluorobenzene(Surrogate QC Std.)			EPA TO-15	68.8263	ug/m3		KL	2/25/2022	57.22 to 85.84
Ethylene Oxide			EPA TO-15	0.1913	ug/m3	0.0418	KL	2/25/2022	

COMMENTS: \$ETO received in the lab at 8 in Hg.

ug/L: micrograms/liter mg/L: milligrams/liter mg/kg: milligrams/kilogram ug/kg: micrograms/kilogram ug/g: micrograms/gram ppm: parts per million ppb: parts per billion org/L: organisms/liter	<: less than MCL: Maximum Contaminant Level RL: Reporting Limit LSPC: result less than lower specification USPC: result greater than upper specification TIE: Tentatively Identified or Estimated VIOL: Violation (result exceeds MCL)	<b>Laboratory Contacts:</b> Lab Director: Mark Tolbert 470-524-0577 Inorganics: Carmen Pyles 470-524-0629 Metals: Shene Jones 470-524-0544 Organics: Mary Bowman 470-524-0639 GC Mass Spec: Ralph Schulz 470-524-0684 Microbiology: Mary Bowman 470-524-0709
---	--	--

**GEORGIA DEPARTMENT OF NATURAL RESOURCES  
ENVIRONMENTAL PROTECTION DIVISION**

5804 Peachtree Corners East, Norcross, GA 30092-3403  
(678) 248-7384

**LABORATORY REPORT**

TO: Ga EPD Air Program EPD Air Prot Ambient Monitoring 4244 International Pkwy Ste 120 Atlanta, GA 30354	Date Collected: 2/10/2022 Time Collected: 0:00 Sample Collector: J. BRYANT Chlorination: Sample Type: Received By: HZ
	Date Received: 2/24/2022 Time Received: 9:57 AM Project: DATA STUDY Reporting Date: 4/19/2022 Received Temperature: 23.2 °C
Sample ID: AK94066 Facility Name: FULTON F2 Site ID: F2 Location ID: Location Descr:	

ANALYTE	PARAMETER CODE	EPA NOTE	METHOD	RESULT	UNITS	QUALIFIER RL	ANALYSIS		MCL or QC Range
							ANALYST	DATE	
<b>ETO by EPA Method TO-15 QC Batch 195107</b>									
Bromofluorobenzene(Surrogate QC Std.)			EPA TO-15	9.5899	ppbV		KL	2/25/2022	8 to 12
Ethylene Oxide			EPA TO-15	0.1017	ppbV	0.0232	KL	2/25/2022	
<b>ETO Results by EPA Method TO-15</b>									
Bromofluorobenzene(Surrogate QC Std.)			EPA TO-15	68.5967	ug/m3		KL	2/25/2022	57.22 to 85.84
Ethylene Oxide			EPA TO-15	0.1833	ug/m3	0.0418	KL	2/25/2022	

COMMENTS: \$ETO received in the lab at 4 in Hg.

ug/L: micrograms/liter  
 mg/L: milligrams/liter  
 mg/kg: milligrams/kilogram  
 ug/kg: micrograms/kilogram  
 ug/g: micrograms/gram  
 ppm: parts per million  
 ppb: parts per billion  
 org/L: organisms/liter

<: less than  
 MCL: Maximum Contaminant Level  
 RL: Reporting Limit  
 LSPC: result less than lower specification  
 USPC: result greater than upper specification  
 TIE: Tentatively Identified or Estimated  
 VIOL: Violation (result exceeds MCL)

**Laboratory Contacts:**

Lab Director: Mark Tolbert 470-524-0577  
 Inorganics: Carmen Pyles 470-524-0629  
 Metals: Shene Jones 470-524-0544  
 Organics: Mary Bowman 470-524-0639  
 GC Mass Spec: Ralph Schulz 470-524-0684  
 Microbiology: Mary Bowman 470-524-0709

**GEORGIA DEPARTMENT OF NATURAL RESOURCES  
ENVIRONMENTAL PROTECTION DIVISION**

5804 Peachtree Corners East, Norcross, GA 30092-3403  
(678) 248-7384

**LABORATORY REPORT**

TO: Ga EPD Air Program EPD Air Prot Ambient Monitoring 4244 International Pkwy Ste 120 Atlanta, GA 30354	Date Collected: 2/10/2022 Time Collected: 0:00 Sample Collector: H. STREET Canister Number: 114320 Canister Cleaned: 1/25/2022 Received By: HZ
	Date Received: 2/14/2022 Time Received: 11:07 AM Project: AIR Reporting Date: 4/19/2022 Received Temperature: 19.9 °C
Sample ID: AK94067 Facility Name: south dekalb Site ID: 013-089-0002 Location ID: Location Descr:	

ANALYTE	PARAMETER CODE	EPA NOTE	METHOD	RESULT	UNITS	QUALIFIER RL	ANALYSIS		MCL or QC Range
							ANALYST	DATE	
<b>ETO by EPA Method TO-15 QC Batch 194988</b>									
Bromofluorobenzene(Surrogate QC Std.)			EPA TO-15	9.5962	ppbV		KL	2/16/2022	8 to 12
Ethylene Oxide			EPA TO-15	0.0546	ppbV	SQ	0.0232	KL	2/16/2022
<b>ETO Results by EPA Method TO-15</b>									
Bromofluorobenzene(Surrogate QC Std.)			EPA TO-15	68.6417	ug/m3		KL	2/16/2022	57.22 to 85.84
Ethylene Oxide			EPA TO-15	0.0984	ug/m3	SQ	0.0418	KL	2/16/2022

COMMENTS: \$ETO received in the lab at 5.4 psi.

ug/L: micrograms/liter  
 mg/L: milligrams/liter  
 mg/kg: milligrams/kilogram  
 ug/kg: micrograms/kilogram  
 ug/g: micrograms/gram  
 ppm: parts per million  
 ppb: parts per billion  
 org/L: organisms/liter

<: less than  
 MCL: Maximum Contaminant Level  
 RL: Reporting Limit  
 LSPC: result less than lower specification  
 USPC: result greater than upper specification  
 TIE: Tentatively Identified or Estimated  
 VIOL: Violation (result exceeds MCL)

**Laboratory Contacts:**

Lab Director: Mark Tolbert 470-524-0577  
 Inorganics: Carmen Pyles 470-524-0629  
 Metals: Shene Jones 470-524-0544  
 Organics: Mary Bowman 470-524-0639  
 GC Mass Spec: Ralph Schulz 470-524-0684  
 Microbiology: Mary Bowman 470-524-0709

**GEORGIA DEPARTMENT OF NATURAL RESOURCES  
ENVIRONMENTAL PROTECTION DIVISION**

5804 Peachtree Corners East, Norcross, GA 30092-3403  
(678) 248-7384

**LABORATORY REPORT**

TO: Ga EPD Air Program EPD Air Prot Ambient Monitoring 4244 International Pkwy Ste 120 Atlanta, GA 30354	Date Collected: 2/10/2022 Time Collected: 0:00 Sample Collector: J. BRYANT Chlorination: Sample Type: Received By: HZ
	Date Received: 2/24/2022 Time Received: 9:57 AM Project: DATA STUDY Reporting Date: 4/19/2022 Received Temperature: 23.1 °C
Sample ID: AK94068 Facility Name: FULTON F2-QA Site ID: F2-QA Location ID: Location Descr:	

ANALYTE	PARAMETER CODE	EPA NOTE	METHOD	RESULT	UNITS	QUALIFIER RL	ANALYSIS		MCL or QC Range
							ANALYST	DATE	
<b>ETO by EPA Method TO-15 QC Batch 195107</b>									
Bromofluorobenzene(Surrogate QC Std.)			EPA TO-15	9.6920	ppbV		KL	2/25/2022	8 to 12
Ethylene Oxide			EPA TO-15	0.0880	ppbV	0.0232	KL	2/25/2022	
<b>ETO Results by EPA Method TO-15</b>									
Bromofluorobenzene(Surrogate QC Std.)			EPA TO-15	69.327	ug/m3		KL	2/25/2022	57.22 to 85.84
Ethylene Oxide			EPA TO-15	0.1586	ug/m3	0.0418	KL	2/25/2022	

COMMENTS: \$ETO received in the lab at 8 in Hg.

ug/L: micrograms/liter mg/L: milligrams/liter mg/kg: milligrams/kilogram ug/kg: micrograms/kilogram ug/g: micrograms/gram ppm: parts per million ppb: parts per billion org/L: organisms/liter	<: less than MCL: Maximum Contaminant Level RL: Reporting Limit LSPC: result less than lower specification USPC: result greater than upper specification TIE: Tentatively Identified or Estimated VIOL: Violation (result exceeds MCL)	<b>Laboratory Contacts:</b> Lab Director: Mark Tolbert 470-524-0577 Inorganics: Carmen Pyles 470-524-0629 Metals: Shene Jones 470-524-0544 Organics: Mary Bowman 470-524-0639 GC Mass Spec: Ralph Schulz 470-524-0684 Microbiology: Mary Bowman 470-524-0709
---	--	--

**GEORGIA DEPARTMENT OF NATURAL RESOURCES  
ENVIRONMENTAL PROTECTION DIVISION**

5804 Peachtree Corners East, Norcross, GA 30092-3403  
(678) 248-7384

**LABORATORY REPORT**

TO: Ga EPD Air Program EPD Air Prot Ambient Monitoring 4244 International Pkwy Ste 120 Atlanta, GA 30354	Date Collected: 2/10/2022 Time Collected: 0:00 Sample Collector: H. STREET Canister Number: 114310 Canister Cleaned: 1/25/2022 Received By: HZ
	Date Received: 2/14/2022 Time Received: 11:07 AM Project: AIR Reporting Date: 4/19/2022 Received Temperature: 20.1 °C
Sample ID: AK94069 Facility Name: SOUTH DEKALB QA Site ID: 013-089-0002 Location ID: Location Descr:	

ANALYTE	PARAMETER CODE	EPA NOTE	METHOD	RESULT	UNITS	QUALIFIER RL	ANALYSIS		MCL or QC Range
							ANALYST	DATE	
<b>ETO by EPA Method TO-15 QC Batch 194988</b>									
Bromofluorobenzene(Surrogate QC Std.)			EPA TO-15	9.9450	ppbV		KL	2/16/2022	8 to 12
Ethylene Oxide			EPA TO-15	0.1029	ppbV	0.0232	KL	2/16/2022	
<b>ETO Results by EPA Method TO-15</b>									
Bromofluorobenzene(Surrogate QC Std.)			EPA TO-15	71.1367	ug/m3		KL	2/16/2022	57.22 to 85.84
Ethylene Oxide			EPA TO-15	0.1855	ug/m3	0.0418	KL	2/16/2022	
<b>ETO NATTS QA Replicate Precision</b>									
Ethylene Oxide			EPA TO-15	13.2	%RPD		KL	2/17/2022	25
<b>ETO QA Replicate Result</b>									
Bromofluorobenzene(Surrogate QC Std.)			EPA TO-15	9.7777	ppbV		KL	2/16/2022	8 to 12
Ethylene Oxide			EPA TO-15	0.1174	ppbV		KL	2/16/2022	

COMMENTS: \$ETO received in the lab at 5 psi.

ug/L: micrograms/liter  
 mg/L: milligrams/liter  
 mg/kg: milligrams/kilogram  
 ug/kg: micrograms/kilogram  
 ug/g: micrograms/gram  
 ppm: parts per million  
 ppb: parts per billion  
 org/L: organisms/liter

<: less than  
 MCL: Maximum Contaminant Level  
 RL: Reporting Limit  
 LSPC: result less than lower specification  
 USPC: result greater than upper specification  
 TIE: Tentatively Identified or Estimated  
 VIOL: Violation (result exceeds MCL)

**Laboratory Contacts:**

Lab Director: Mark Tolbert 470-524-0577  
 Inorganics: Carmen Pyles 470-524-0629  
 Metals: Shene Jones 470-524-0544  
 Organics: Mary Bowman 470-524-0639  
 GC Mass Spec: Ralph Schulz 470-524-0684  
 Microbiology: Mary Bowman 470-524-0709



**GEORGIA DEPARTMENT OF NATURAL RESOURCES  
ENVIRONMENTAL PROTECTION DIVISION**

5804 Peachtree Corners East, Norcross, GA 30092-3403  
(678) 248-7384

**LABORATORY REPORT**

TO: Ga EPD Air Program EPD Air Prot Ambient Monitoring 4244 International Pkwy Ste 120 Atlanta, GA 30354	Date Collected: 2/10/2022 Time Collected: 0:00 Sample Collector: J. BRYANT Chlorination: Sample Type: Received By: HZ
	Date Received: 2/24/2022 Time Received: 9:57 AM Project: DATA STUDY Reporting Date: 4/19/2022 Received Temperature: 23.2 °C
Sample ID: AK94070 Facility Name: COVINGTON C2 Site ID: C2 Location ID: Location Descr:	

ANALYTE	PARAMETER CODE	EPA NOTE	METHOD	RESULT	UNITS	QUALIFIER RL	ANALYSIS		MCL or QC Range
							ANALYST	DATE	
<b>ETO by EPA Method TO-15 QC Batch 195107</b>									
Bromofluorobenzene(Surrogate QC Std.)			EPA TO-15	9.5048	ppbV		KL	2/25/2022	8 to 12
Ethylene Oxide			EPA TO-15	0.1192	ppbV	0.0232	KL	2/25/2022	
<b>ETO Results by EPA Method TO-15</b>									
Bromofluorobenzene(Surrogate QC Std.)			EPA TO-15	67.9879	ug/m3		KL	2/25/2022	57.22 to 85.84
Ethylene Oxide			EPA TO-15	0.2149	ug/m3	0.0418	KL	2/25/2022	

COMMENTS: \$ETO received in the lab at 5.5 in Hg.

ug/L: micrograms/liter  
 mg/L: milligrams/liter  
 mg/kg: milligrams/kilogram  
 ug/kg: micrograms/kilogram  
 ug/g: micrograms/gram  
 ppm: parts per million  
 ppb: parts per billion  
 org/L: organisms/liter

<: less than  
 MCL: Maximum Contaminant Level  
 RL: Reporting Limit  
 LSPC: result less than lower specification  
 USPC: result greater than upper specification  
 TIE: Tentatively Identified or Estimated  
 VIOL: Violation (result exceeds MCL)

**Laboratory Contacts:**

Lab Director: Mark Tolbert 470-524-0577  
 Inorganics: Carmen Pyles 470-524-0629  
 Metals: Shene Jones 470-524-0544  
 Organics: Mary Bowman 470-524-0639  
 GC Mass Spec: Ralph Schulz 470-524-0684  
 Microbiology: Mary Bowman 470-524-0709

**GEORGIA DEPARTMENT OF NATURAL RESOURCES  
ENVIRONMENTAL PROTECTION DIVISION**

5804 Peachtree Corners East, Norcross, GA 30092-3403  
(678) 248-7384

**LABORATORY REPORT**

TO: Ga EPD Air Program EPD Air Prot Ambient Monitoring 4244 International Pkwy Ste 120 Atlanta, GA 30354	Date Collected: 2/21/2022 Time Collected: 0:00 Sample Collector: J. BRYANT Chlorination: Sample Type: T Received By: HZ
	Date Received: 3/9/2022 Time Received: 11:19 AM Project: DATA STUDY Reporting Date: 4/19/2022 Received Temperature: 20.1 °C
Sample ID: AK94709 Facility Name: COVINGTON C2 C3 FB Site ID: C2 Location ID: QCCAN Location Descr:	

ANALYTE	PARAMETER CODE	EPA NOTE	METHOD	RESULT	UNITS	QUALIFIER RL	ANALYSIS		MCL or QC Range
							ANALYST	DATE	
<b>ETO by EPA Method TO-15 QC Batch 195358</b>									
Bromofluorobenzene(Surrogate QC Std.)			EPA TO-15	9.7233	ppbV		KL	3/11/2022	8 to 12
Ethylene Oxide			EPA TO-15	0	ppbV	ND	0.0232	KL	3/11/2022
<b>ETO Results by EPA Method TO-15</b>									
Bromofluorobenzene(Surrogate QC Std.)			EPA TO-15	69.5509	ug/m3		KL	3/11/2022	57.22 to 85.84
Ethylene Oxide			EPA TO-15	0	ug/m3	ND	0.0418	KL	3/11/2022

COMMENTS: \$ETO received in the lab at 29 in Hg.

ug/L: micrograms/liter  
 mg/L: milligrams/liter  
 mg/kg: milligrams/kilogram  
 ug/kg: micrograms/kilogram  
 ug/g: micrograms/gram  
 ppm: parts per million  
 ppb: parts per billion  
 org/L: organisms/liter

<: less than  
 MCL: Maximum Contaminant Level  
 RL: Reporting Limit  
 LSPC: result less than lower specification  
 USPC: result greater than upper specification  
 TIE: Tentatively Identified or Estimated  
 VIOL: Violation (result exceeds MCL)

**Laboratory Contacts:**

Lab Director: Mark Tolbert 470-524-0577  
 Inorganics: Carmen Pyles 470-524-0629  
 Metals: Shene Jones 470-524-0544  
 Organics: Mary Bowman 470-524-0639  
 GC Mass Spec: Ralph Schulz 470-524-0684  
 Microbiology: Mary Bowman 470-524-0709

**GEORGIA DEPARTMENT OF NATURAL RESOURCES  
ENVIRONMENTAL PROTECTION DIVISION**

5804 Peachtree Corners East, Norcross, GA 30092-3403  
(678) 248-7384

**LABORATORY REPORT**

TO: Ga EPD Air Program EPD Air Prot Ambient Monitoring 4244 International Pkwy Ste 120 Atlanta, GA 30354	Date Collected: 2/28/2022 Time Collected: 0:00 Sample Collector: H. STREET Canister Number: 114368 Canister Cleaned: 2/7/2022 Received By: HZ
	Date Received: 3/2/2022 Time Received: 11:51 AM Project: AIR Reporting Date: 4/19/2022 Received Temperature: 21.0 °C
Sample ID: AK94710 Facility Name: SOUTH DEKALB Site ID: 013-089-0002 Location ID: Location Descr:	

ANALYTE	PARAMETER CODE	EPA NOTE	METHOD	RESULT	UNITS	QUALIFIER RL	ANALYSIS		MCL or QC Range
							ANALYST	DATE	
<b>ETO by EPA Method TO-15 QC Batch 195187</b>									
Bromofluorobenzene(Surrogate QC Std.)			EPA TO-15	8.8325	ppbV		KL	3/3/2022	8 to 12
Ethylene Oxide			EPA TO-15	0.0314	ppbV	SQ	0.0232	KL	3/3/2022
<b>ETO Results by EPA Method TO-15</b>									
Bromofluorobenzene(Surrogate QC Std.)			EPA TO-15	63.179	ug/m3		KL	3/3/2022	57.22 to 85.84
Ethylene Oxide			EPA TO-15	0.0566	ug/m3	SQ	0.0418	KL	3/3/2022

COMMENTS: \$ETO received in the lab at 5.4 psi.

ug/L: micrograms/liter mg/L: milligrams/liter mg/kg: milligrams/kilogram ug/kg: micrograms/kilogram ug/g: micrograms/gram ppm: parts per million ppb: parts per billion org/L: organisms/liter	<: less than MCL: Maximum Contaminant Level RL: Reporting Limit LSPC: result less than lower specification USPC: result greater than upper specification TIE: Tentatively Identified or Estimated VIOL: Violation (result exceeds MCL)	<b>Laboratory Contacts:</b> Lab Director: Mark Tolbert 470-524-0577 Inorganics: Carmen Pyles 470-524-0629 Metals: Shene Jones 470-524-0544 Organics: Mary Bowman 470-524-0639 GC Mass Spec: Ralph Schulz 470-524-0684 Microbiology: Mary Bowman 470-524-0709
---	--	--

**GEORGIA DEPARTMENT OF NATURAL RESOURCES  
ENVIRONMENTAL PROTECTION DIVISION**

5804 Peachtree Corners East, Norcross, GA 30092-3403  
(678) 248-7384

**LABORATORY REPORT**

TO: Ga EPD Air Program EPD Air Prot Ambient Monitoring 4244 International Pkwy Ste 120 Atlanta, GA 30354	Date Collected: 2/22/2022 Time Collected: 0:00 Sample Collector: J. BRYANT Chlorination: Sample Type: Received By: HZ
	Date Received: 3/9/2022 Time Received: 11:19 AM Project: DATA STUDY Reporting Date: 4/19/2022 Received Temperature: 20.1 °C
Sample ID: AK94711 Facility Name: FULTON F2 Site ID: F2 Location ID: Location Descr:	

ANALYTE	PARAMETER CODE	EPA NOTE	METHOD	RESULT	UNITS	QUALIFIER RL	ANALYSIS		MCL or QC Range
							ANALYST	DATE	
<b>ETO by EPA Method TO-15 QC Batch 195358</b>									
Bromofluorobenzene(Surrogate QC Std.)			EPA TO-15	9.1084	ppbV		KL	3/11/2022	8 to 12
Ethylene Oxide			EPA TO-15	0.2281	ppbV	0.0232	KL	3/11/2022	
<b>ETO Results by EPA Method TO-15</b>									
Bromofluorobenzene(Surrogate QC Std.)			EPA TO-15	65.1525	ug/m3		KL	3/11/2022	57.22 to 85.84
Ethylene Oxide			EPA TO-15	0.4112	ug/m3	0.0418	KL	3/11/2022	

COMMENTS: \$ETO received in the lab at 4.5 in Hg.

ug/L: micrograms/liter  
 mg/L: milligrams/liter  
 mg/kg: milligrams/kilogram  
 ug/kg: micrograms/kilogram  
 ug/g: micrograms/gram  
 ppm: parts per million  
 ppb: parts per billion  
 org/L: organisms/liter

<: less than  
 MCL: Maximum Contaminant Level  
 RL: Reporting Limit  
 LSPC: result less than lower specification  
 USPC: result greater than upper specification  
 TIE: Tentatively Identified or Estimated  
 VIOL: Violation (result exceeds MCL)

**Laboratory Contacts:**

Lab Director: Mark Tolbert 470-524-0577  
 Inorganics: Carmen Pyles 470-524-0629  
 Metals: Shene Jones 470-524-0544  
 Organics: Mary Bowman 470-524-0639  
 GC Mass Spec: Ralph Schulz 470-524-0684  
 Microbiology: Mary Bowman 470-524-0709

**GEORGIA DEPARTMENT OF NATURAL RESOURCES  
ENVIRONMENTAL PROTECTION DIVISION**

5804 Peachtree Corners East, Norcross, GA 30092-3403  
(678) 248-7384

**LABORATORY REPORT**

TO: Ga EPD Air Program EPD Air Prot Ambient Monitoring 4244 International Pkwy Ste 120 Atlanta, GA 30354	Date Collected: 2/22/2022 Time Collected: 0:00 Sample Collector: C. CULBERT KNOX Chlorination: Sample Type: Received By: HZ
	Date Received: 3/3/2022 Time Received: 9:03 AM Project: DATA STUDY Reporting Date: 4/19/2022 Received Temperature: 21.2 °C
Sample ID: AK94716 Facility Name: DOUGLAS - GENERAL COFFEE Site ID: 013-069-0002 Location ID: Location Descr:	

ANALYTE	PARAMETER CODE	EPA NOTE	METHOD	RESULT	UNITS	QUALIFIER RL	ANALYSIS		MCL or QC Range
							ANALYST	DATE	
<b>ETO by EPA Method TO-15 QC Batch 195187</b>									
Bromofluorobenzene(Surrogate QC Std.)			EPA TO-15	9.8516	ppbV		KL	3/3/2022	8 to 12
Ethylene Oxide			EPA TO-15	0.0347	ppbV	SQ 2	0.0232	KL	3/3/2022
<b>ETO Results by EPA Method TO-15</b>									
Bromofluorobenzene(Surrogate QC Std.)			EPA TO-15	70.4686	ug/m3		KL	3/3/2022	57.22 to 85.84
Ethylene Oxide			EPA TO-15	0.0625	ug/m3	SQ 2	0.0418	KL	3/3/2022

COMMENTS: \$ETO received in the lab at 22.4 psi. Pressure difference of >0.5 psi between receipt from field and receipt in lab.

ug/L: micrograms/liter mg/L: milligrams/liter mg/kg: milligrams/kilogram ug/kg: micrograms/kilogram ug/g: micrograms/gram ppm: parts per million ppb: parts per billion org/L: organisms/liter	<: less than MCL: Maximum Contaminant Level RL: Reporting Limit LSPC: result less than lower specification USPC: result greater than upper specification TIE: Tentatively Identified or Estimated VIOL: Violation (result exceeds MCL)	<b>Laboratory Contacts:</b> Lab Director: Mark Tolbert 470-524-0577 Inorganics: Carmen Pyles 470-524-0629 Metals: Shene Jones 470-524-0544 Organics: Mary Bowman 470-524-0639 GC Mass Spec: Ralph Schulz 470-524-0684 Microbiology: Mary Bowman 470-524-0709
---	--	--

**GEORGIA DEPARTMENT OF NATURAL RESOURCES  
ENVIRONMENTAL PROTECTION DIVISION**

5804 Peachtree Corners East, Norcross, GA 30092-3403  
(678) 248-7384

**LABORATORY REPORT**

TO: Ga EPD Air Program EPD Air Prot Ambient Monitoring 4244 International Pkwy Ste 120 Atlanta, GA 30354	Date Collected: 2/22/2022 Time Collected: 0:00 Sample Collector: J. BRYANT Chlorination: Sample Type: Received By: HZ
	Date Received: 3/9/2022 Time Received: 11:19 AM Project: DATA STUDY Reporting Date: 4/19/2022 Received Temperature: 20.0 °C
Sample ID: AK94717 Facility Name: COVINGTON C2 Site ID: C2 Location ID: QCCAN Location Descr:	

ANALYTE	PARAMETER CODE	EPA NOTE	METHOD	RESULT	UNITS	QUALIFIER RL	ANALYSIS		MCL or QC Range
							ANALYST	DATE	
<b>ETO by EPA Method TO-15 QC Batch 195358</b>									
Bromofluorobenzene(Surrogate QC Std.)			EPA TO-15	9.6677	ppbV		KL	3/11/2022	8 to 12
Ethylene Oxide			EPA TO-15	0.0901	ppbV	0.0232	KL	3/11/2022	
<b>ETO Results by EPA Method TO-15</b>									
Bromofluorobenzene(Surrogate QC Std.)			EPA TO-15	69.1532	ug/m3		KL	3/11/2022	57.22 to 85.84
Ethylene Oxide			EPA TO-15	0.1624	ug/m3	0.0418	KL	3/11/2022	

COMMENTS: \$ETO received in the lab at 7 in Hg.

ug/L: micrograms/liter  
 mg/L: milligrams/liter  
 mg/kg: milligrams/kilogram  
 ug/kg: micrograms/kilogram  
 ug/g: micrograms/gram  
 ppm: parts per million  
 ppb: parts per billion  
 org/L: organisms/liter

<: less than  
 MCL: Maximum Contaminant Level  
 RL: Reporting Limit  
 LSPC: result less than lower specification  
 USPC: result greater than upper specification  
 TIE: Tentatively Identified or Estimated  
 VIOL: Violation (result exceeds MCL)

**Laboratory Contacts:**

Lab Director: Mark Tolbert 470-524-0577  
 Inorganics: Carmen Pyles 470-524-0629  
 Metals: Shene Jones 470-524-0544  
 Organics: Mary Bowman 470-524-0639  
 GC Mass Spec: Ralph Schulz 470-524-0684  
 Microbiology: Mary Bowman 470-524-0709

**GEORGIA DEPARTMENT OF NATURAL RESOURCES  
ENVIRONMENTAL PROTECTION DIVISION**

5804 Peachtree Corners East, Norcross, GA 30092-3403  
(678) 248-7384

**LABORATORY REPORT**

TO: Ga EPD Air Program EPD Air Prot Ambient Monitoring 4244 International Pkwy Ste 120 Atlanta, GA 30354	Date Collected: 2/21/2022 Time Collected: 0:00 Sample Collector: J. BRYANT Chlorination: Sample Type: Received By: HZ
	Date Received: 3/9/2022 Time Received: 11:19 AM Project: DATA STUDY Reporting Date: 4/19/2022 Received Temperature: 20.2 °C
Sample ID: AK94718 Facility Name: FULTON F1 F2 FB Site ID: F1 Location ID: Location Descr:	

ANALYTE	PARAMETER CODE	EPA NOTE	METHOD	RESULT	UNITS	QUALIFIER RL	ANALYSIS		MCL or QC Range
							ANALYST	DATE	
<b>ETO by EPA Method TO-15 QC Batch 195358</b>									
Bromofluorobenzene(Surrogate QC Std.)			EPA TO-15	9.6734	ppbV		KL	3/11/2022	8 to 12
Ethylene Oxide			EPA TO-15	0	ppbV	ND	0.0232	KL	3/11/2022
<b>ETO Results by EPA Method TO-15</b>									
Bromofluorobenzene(Surrogate QC Std.)			EPA TO-15	69.1939	ug/m3		KL	3/11/2022	57.22 to 85.84
Ethylene Oxide			EPA TO-15	0	ug/m3	ND	0.0418	KL	3/11/2022

COMMENTS: \$ETO received in the lab at 29 in Hg.

ug/L: micrograms/liter  
 mg/L: milligrams/liter  
 mg/kg: milligrams/kilogram  
 ug/kg: micrograms/kilogram  
 ug/g: micrograms/gram  
 ppm: parts per million  
 ppb: parts per billion  
 org/L: organisms/liter

<: less than  
 MCL: Maximum Contaminant Level  
 RL: Reporting Limit  
 LSPC: result less than lower specification  
 USPC: result greater than upper specification  
 TIE: Tentatively Identified or Estimated  
 VIOL: Violation (result exceeds MCL)

**Laboratory Contacts:**

Lab Director: Mark Tolbert 470-524-0577  
 Inorganics: Carmen Pyles 470-524-0629  
 Metals: Shene Jones 470-524-0544  
 Organics: Mary Bowman 470-524-0639  
 GC Mass Spec: Ralph Schulz 470-524-0684  
 Microbiology: Mary Bowman 470-524-0709

**GEORGIA DEPARTMENT OF NATURAL RESOURCES  
ENVIRONMENTAL PROTECTION DIVISION**

5804 Peachtree Corners East, Norcross, GA 30092-3403  
(678) 248-7384

**LABORATORY REPORT**

TO: Ga EPD Air Program EPD Air Prot Ambient Monitoring 4244 International Pkwy Ste 120 Atlanta, GA 30354	Date Collected: 2/22/2022 Time Collected: 0:00 Sample Collector: J. BRYANT Chlorination: Sample Type: Received By: HZ
	Date Received: 3/9/2022 Time Received: 11:19 AM Project: DATA STUDY Reporting Date: 4/19/2022 Received Temperature: 20.0 °C
Sample ID: AK94721 Facility Name: FULTON F1 Site ID: F1 Location ID: Location Descr:	

ANALYTE	PARAMETER CODE	EPA NOTE	METHOD	RESULT	UNITS	QUALIFIER RL	ANALYSIS		MCL or QC Range
							ANALYST	DATE	
<b>ETO by EPA Method TO-15 QC Batch 195358</b>									
Bromofluorobenzene(Surrogate QC Std.)			EPA TO-15	9.7287	ppbV		KL	3/11/2022	8 to 12
Ethylene Oxide			EPA TO-15	0.0558	ppbV	SQ	0.0232	KL	3/11/2022
<b>ETO Results by EPA Method TO-15</b>									
Bromofluorobenzene(Surrogate QC Std.)			EPA TO-15	69.5895	ug/m3		KL	3/11/2022	57.22 to 85.84
Ethylene Oxide			EPA TO-15	0.1006	ug/m3	SQ	0.0418	KL	3/11/2022

COMMENTS: \$ETO received in the lab at 9.5 in Hg.

ug/L: micrograms/liter  
 mg/L: milligrams/liter  
 mg/kg: milligrams/kilogram  
 ug/kg: micrograms/kilogram  
 ug/g: micrograms/gram  
 ppm: parts per million  
 ppb: parts per billion  
 org/L: organisms/liter

<: less than  
 MCL: Maximum Contaminant Level  
 RL: Reporting Limit  
 LSPC: result less than lower specification  
 USPC: result greater than upper specification  
 TIE: Tentatively Identified or Estimated  
 VIOL: Violation (result exceeds MCL)

**Laboratory Contacts:**

Lab Director: Mark Tolbert 470-524-0577  
 Inorganics: Carmen Pyles 470-524-0629  
 Metals: Shene Jones 470-524-0544  
 Organics: Mary Bowman 470-524-0639  
 GC Mass Spec: Ralph Schulz 470-524-0684  
 Microbiology: Mary Bowman 470-524-0709



**GEORGIA DEPARTMENT OF NATURAL RESOURCES  
ENVIRONMENTAL PROTECTION DIVISION**

5804 Peachtree Corners East, Norcross, GA 30092-3403  
(678) 248-7384

**LABORATORY REPORT**

TO: Ga EPD Air Program EPD Air Prot Ambient Monitoring 4244 International Pkwy Ste 120 Atlanta, GA 30354	Date Collected: 2/22/2022 Time Collected: 0:00 Sample Collector: H. STREET Canister Number: 114351 Canister Cleaned: 2/7/2022 Received By: HZ
	Date Received: 2/24/2022 Time Received: 9:57 AM Project: AIR Reporting Date: 4/19/2022 Received Temperature: 23.1 °C
Sample ID: AK94724 Facility Name: SOUTH DEKALB Site ID: 013-089-0002 Location ID: Location Descr:	

ANALYTE	PARAMETER CODE	EPA NOTE	METHOD	RESULT	UNITS	QUALIFIER RL	ANALYSIS		MCL or QC Range
							ANALYST	DATE	
<b>ETO by EPA Method TO-15 QC Batch 195107</b>									
Bromofluorobenzene(Surrogate QC Std.)			EPA TO-15	9.3154	ppbV		KL	2/25/2022	8 to 12
Ethylene Oxide			EPA TO-15	0.0495	ppbV	SQ	0.0232	KL	2/25/2022
<b>ETO Results by EPA Method TO-15</b>									
Bromofluorobenzene(Surrogate QC Std.)			EPA TO-15	66.6332	ug/m3		KL	2/25/2022	57.22 to 85.84
Ethylene Oxide			EPA TO-15	0.0892	ug/m3	SQ	0.0418	KL	2/25/2022

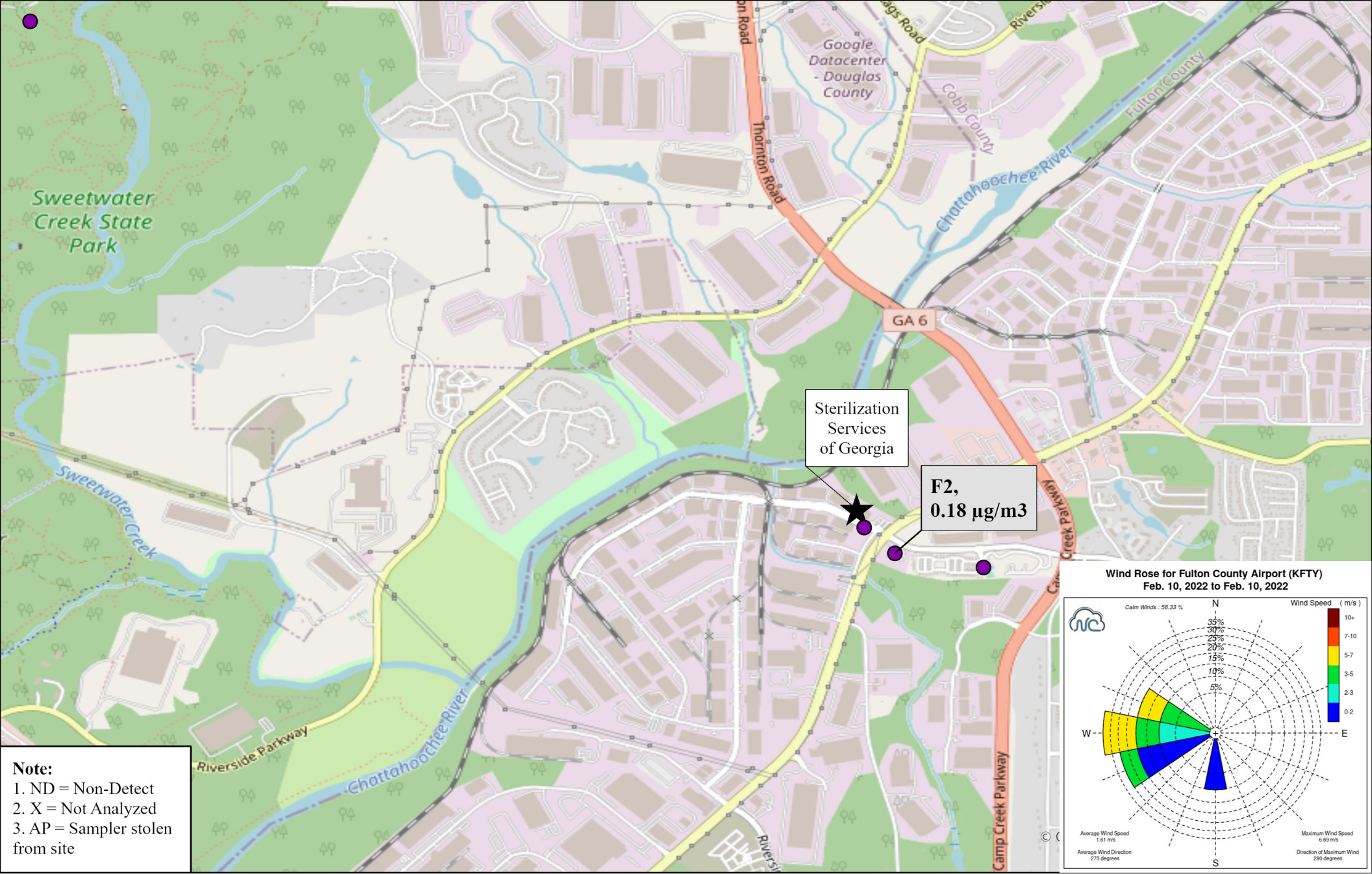
COMMENTS: \$ETO received in the lab at 5.2 psi.

ug/L: micrograms/liter  
 mg/L: milligrams/liter  
 mg/kg: milligrams/kilogram  
 ug/kg: micrograms/kilogram  
 ug/g: micrograms/gram  
 ppm: parts per million  
 ppb: parts per billion  
 org/L: organisms/liter

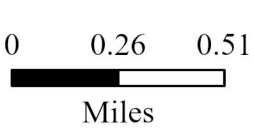
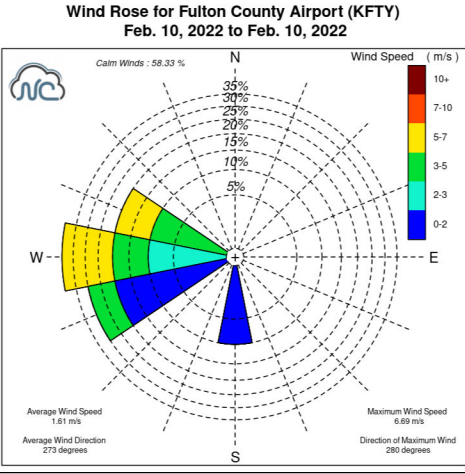
<: less than  
 MCL: Maximum Contaminant Level  
 RL: Reporting Limit  
 LSPC: result less than lower specification  
 USPC: result greater than upper specification  
 TIE: Tentatively Identified or Estimated  
 VIOL: Violation (result exceeds MCL)

**Laboratory Contacts:**

Lab Director: Mark Tolbert 470-524-0577  
 Inorganics: Carmen Pyles 470-524-0629  
 Metals: Shene Jones 470-524-0544  
 Organics: Mary Bowman 470-524-0639  
 GC Mass Spec: Ralph Schulz 470-524-0684  
 Microbiology: Mary Bowman 470-524-0709



**Note:**  
 1. ND = Non-Detect  
 2. X = Not Analyzed  
 3. AP = Sampler stolen from site



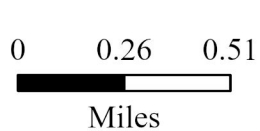
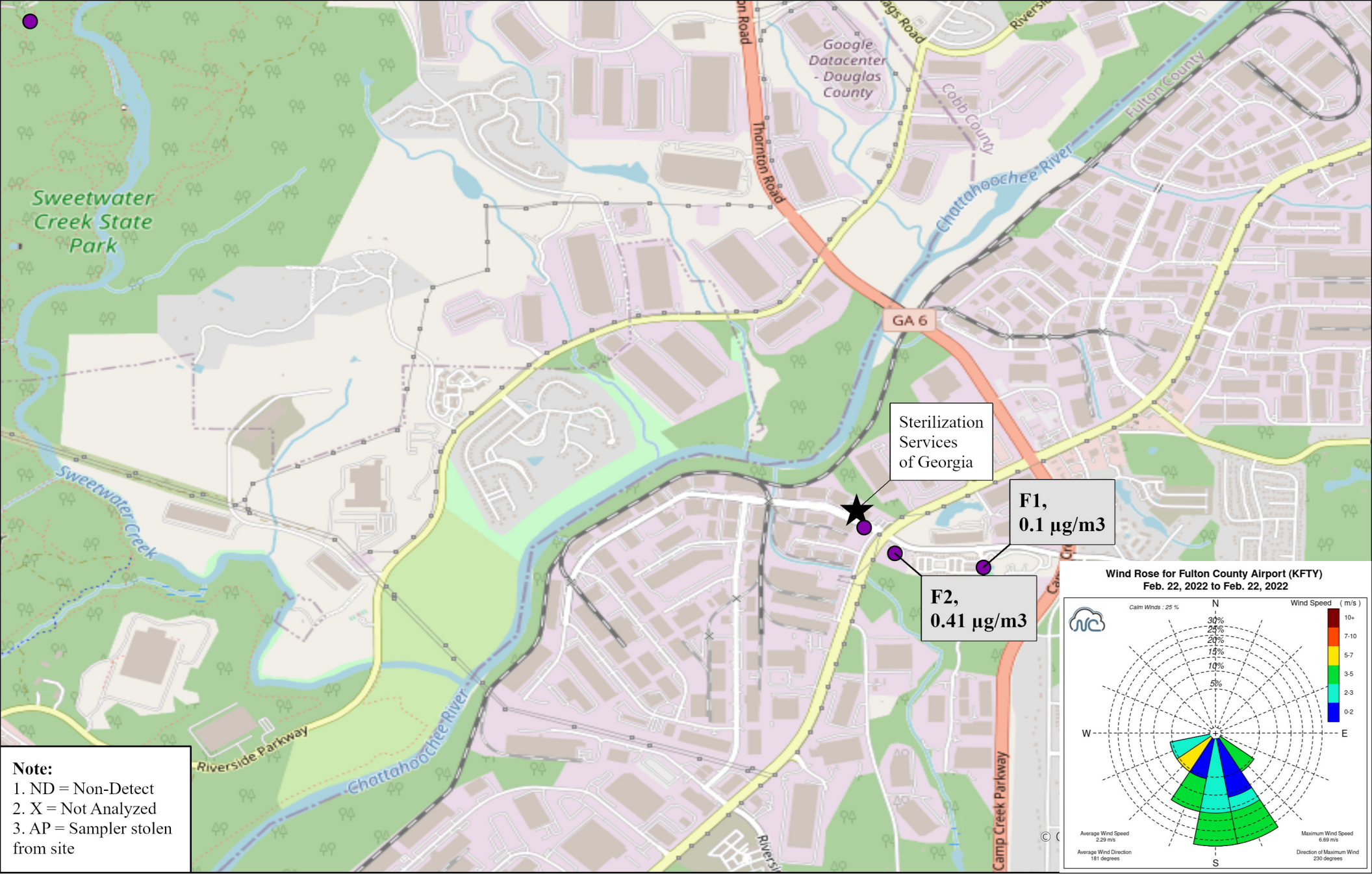
Site ID, Concentration ( $\mu\text{g}/\text{m}^3$ )

Ethylene Oxide Sampling  
 Fulton County, GA

02/10/2022  
 Sampled By: Georgia Environmental Protection Division  
 Analyzed By: Georgia Environmental Protection Division







Site ID, Concentration ( $\mu\text{g}/\text{m}^3$ )

Ethylene Oxide Sampling  
 Fulton County, GA

02/22/2022

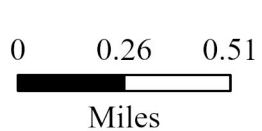
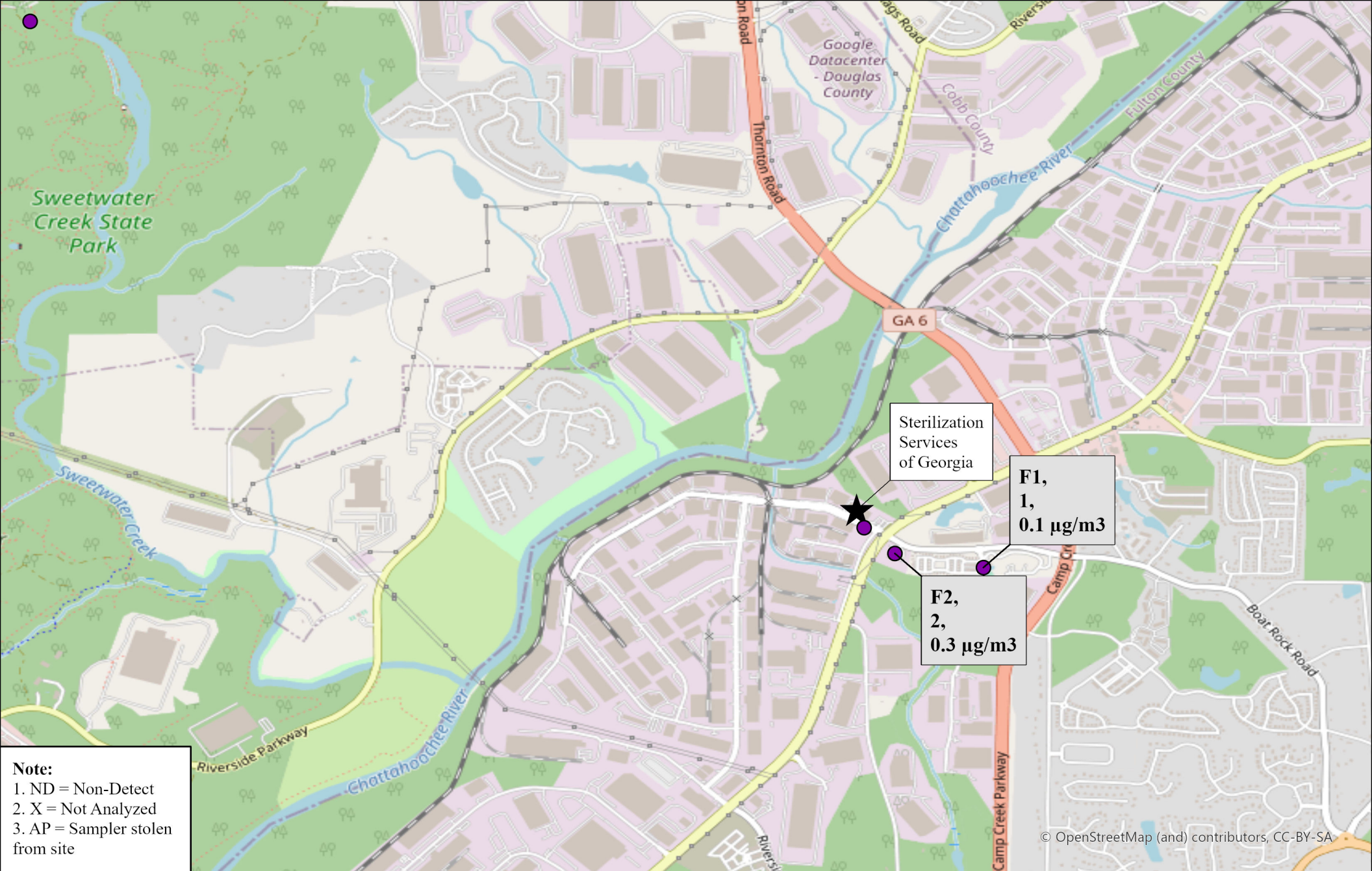
Sampled By: Georgia Environmental Protection Division  
 Analyzed By: Georgia Environmental Protection Division



**GEORGIA**  
 DEPARTMENT OF NATURAL RESOURCES

**ENVIRONMENTAL PROTECTION DIVISION**





**Site ID, Number of Samples, Concentration (µg/m<sup>3</sup>)**

Ethylene Oxide Sampling  
 Fulton County, GA

February 2022 Site Average Values

Note: Not detectable values were included in average calculations as a value of 0.

Sampled By: Georgia Environmental Protection Division

Analyzed By: Georgia Environmental Protection Division



**GEORGIA**  
 DEPARTMENT OF NATURAL RESOURCES

ENVIRONMENTAL PROTECTION DIVISION