



February 14, 2023

MEMORANDUM

To: Karen Hays, Air Branch Chief *KH*

Through: James Boylan, Assistant Branch Chief

Through: DeAnna Oser, Ambient Monitoring Program Manager

From: Jaime Gore, Operations 1 Unit Manager

RE: Fulton – January 5 – January 29, 2022, Sampling Results for Ethylene Oxide

Samples of Ethylene Oxide (EtO) were collected during the period of January 5 – January 29, 2022, by the Ambient Monitoring Program in the Fulton area to characterize the EtO concentration. Each of the samples were sent to the Georgia Environmental Protection Division Laboratory (EPD) for analysis. The Null code “AA” is applied to indicate Sample Pressure was out of limits. The Qualifier code of “2” was given to samples to indicate that the collection deviated from established procedures, but the integrity of the sample was not compromised. The Qualifier code of “SQ” indicates the analysis of the sample was above the method detection limit but below the practical quantification limit.

Location	Date	Qualifier	EtO Concentration ($\mu\text{g}/\text{m}^3$)
F2	01/05/2022	2	0.26
F2	01/17/2022	SQ	0.06
F2	01/29/2022		AA
F2-QA	01/05/2022		AA
F1-SA	01/17/2022	SQ	0.06

If you have any questions, please let me know.

JCG

**GEORGIA DEPARTMENT OF NATURAL RESOURCES
ENVIRONMENTAL PROTECTION DIVISION**

5804 Peachtree Corners East, Norcross, GA 30092-3403
(678) 248-7384

LABORATORY REPORT

TO: Ga EPD Air Program EPD Air Prot Ambient Monitoring 4244 International Pkwy Ste 120 Atlanta, GA 30354	Date Collected: 1/5/2022 Time Collected: 0:00 Sample Collector: J. BRYANT Chlorination: Sample Type: Received By: HZ
	Date Received: 1/19/2022 Time Received: 10:47 AM Project: DATA STUDY Reporting Date: 3/18/2022 Received Temperature: 23.5 °C
Sample ID: AK92585 Facility Name: COBB S2 Site ID: S2 Location ID: QCCAN Location Descr:	

ANALYTE	PARAMETER CODE	EPA NOTE	METHOD	RESULT	UNITS	QUALIFIER RL	ANALYSIS		MCL or QC Range
							ANALYST	DATE	
ETO by EPA Method TO-15 QC Batch 194650									
Bromofluorobenzene(Surrogate QC Std.)			EPA TO-15	9.7044	ppbV		HZ	1/20/2022	8 to 12
Ethylene Oxide			EPA TO-15	0.1235	ppbV	0.0232	HZ	1/20/2022	
ETO Results by EPA Method TO-15									
Bromofluorobenzene(Surrogate QC Std.)			EPA TO-15	69.4157	ug/m3		HZ	1/20/2022	57.22 to 85.84
Ethylene Oxide			EPA TO-15	0.2226	ug/m3	0.0418	HZ	1/20/2022	

COMMENTS: \$ETO received in lab at 1psi.

ug/L: micrograms/liter
 mg/L: milligrams/liter
 mg/kg: milligrams/kilogram
 ug/kg: micrograms/kilogram
 ug/g: micrograms/gram
 ppm: parts per million
 ppb: parts per billion
 org/L: organisms/liter

<: less than
 MCL: Maximum Contaminant Level
 RL: Reporting Limit
 LSPC: result less than lower specification
 USPC: result greater than upper specification
 TIE: Tentatively Identified or Estimated
 VIOL: Violation (result exceeds MCL)

Laboratory Contacts:

Lab Director: Mark Tolbert 470-524-0577
 Inorganics: Carmen Pyles 470-524-0629
 Metals: Shene Jones 470-524-0544
 Organics: Mary Bowman 470-524-0639
 GC Mass Spec: Ralph Schulz 470-524-0684
 Microbiology: Mary Bowman 470-524-0709

**GEORGIA DEPARTMENT OF NATURAL RESOURCES
ENVIRONMENTAL PROTECTION DIVISION**

5804 Peachtree Corners East, Norcross, GA 30092-3403
(678) 248-7384

LABORATORY REPORT

TO: Ga EPD Air Program EPD Air Prot Ambient Monitoring 4244 International Pkwy Ste 120 Atlanta, GA 30354	Date Collected: 1/5/2022 Time Collected: 0:00 Sample Collector: J. BRYANT Chlorination: Sample Type: Received By: HZ Date Received: 1/19/2022 Time Received: 10:47 AM Project: DATA STUDY Reporting Date: 3/18/2022 Received Temperature: 21.9 °C
Sample ID: AK92586 Facility Name: COBB S2-QA Site ID: S2-QA Location ID: Location Descr:	

ANALYTE	PARAMETER CODE	EPA NOTE	METHOD	RESULT	UNITS	QUALIFIER RL	ANALYSIS		MCL or QC Range
							ANALYST	DATE	
ETO by EPA Method TO-15 QC Batch 194650									
Bromofluorobenzene(Surrogate QC Std.)			EPA TO-15	10.8678	ppbV		HZ	1/20/2022	8 to 12
Ethylene Oxide			EPA TO-15	0.1069	ppbV	0.0232	HZ	1/20/2022	
ETO Results by EPA Method TO-15									
Bromofluorobenzene(Surrogate QC Std.)			EPA TO-15	77.7375	ug/m3		HZ	1/20/2022	57.22 to 85.84
Ethylene Oxide			EPA TO-15	0.1927	ug/m3	0.0418	HZ	1/20/2022	

COMMENTS: \$ETO received in lab at 4 in Hg.

ug/L: micrograms/liter
 mg/L: milligrams/liter
 mg/kg: milligrams/kilogram
 ug/kg: micrograms/kilogram
 ug/g: micrograms/gram
 ppm: parts per million
 ppb: parts per billion
 org/L: organisms/liter

<: less than
 MCL: Maximum Contaminant Level
 RL: Reporting Limit
 LSPC: result less than lower specification
 USPC: result greater than upper specification
 TIE: Tentatively Identified or Estimated
 VIOL: Violation (result exceeds MCL)

Laboratory Contacts:

Lab Director: Mark Tolbert 470-524-0577
 Inorganics: Carmen Pyles 470-524-0629
 Metals: Shene Jones 470-524-0544
 Organics: Mary Bowman 470-524-0639
 GC Mass Spec: Ralph Schulz 470-524-0684
 Microbiology: Mary Bowman 470-524-0709

**GEORGIA DEPARTMENT OF NATURAL RESOURCES
ENVIRONMENTAL PROTECTION DIVISION**

5804 Peachtree Corners East, Norcross, GA 30092-3403
(678) 248-7384

LABORATORY REPORT

TO: Ga EPD Air Program EPD Air Prot Ambient Monitoring 4244 International Pkwy Ste 120 Atlanta, GA 30354	Date Collected: 1/5/2022 Time Collected: 0:00 Sample Collector: J. BRYANT Chlorination: Sample Type: Received By: HZ
	Date Received: 1/19/2022 Time Received: 10:47 AM Project: DATA STUDY Reporting Date: 3/18/2022 Received Temperature: 21.6 °C
Sample ID: AK92587 Facility Name: COVINGTON C2 Site ID: C2 Location ID: Location Descr:	

ANALYTE	PARAMETER CODE	EPA NOTE	METHOD	RESULT	UNITS	QUALIFIER RL	ANALYSIS		MCL or QC Range
							ANALYST	DATE	
ETO by EPA Method TO-15 QC Batch 194650									
Bromofluorobenzene(Surrogate QC Std.)			EPA TO-15	9.9380	ppbV		HZ	1/21/2022	8 to 12
Ethylene Oxide			EPA TO-15	0.0610	ppbV	SQ	0.0232	HZ	1/21/2022
ETO Results by EPA Method TO-15									
Bromofluorobenzene(Surrogate QC Std.)			EPA TO-15	71.0866	ug/m3		HZ	1/21/2022	57.22 to 85.84
Ethylene Oxide			EPA TO-15	0.11	ug/m3	SQ	0.0418	HZ	1/21/2022

COMMENTS: \$ETO received in lab at 6 in Hg.

ug/L: micrograms/liter
 mg/L: milligrams/liter
 mg/kg: milligrams/kilogram
 ug/kg: micrograms/kilogram
 ug/g: micrograms/gram
 ppm: parts per million
 ppb: parts per billion
 org/L: organisms/liter

<: less than
 MCL: Maximum Contaminant Level
 RL: Reporting Limit
 LSPC: result less than lower specification
 USPC: result greater than upper specification
 TIE: Tentatively Identified or Estimated
 VIOL: Violation (result exceeds MCL)

Laboratory Contacts:

Lab Director: Mark Tolbert 470-524-0577
 Inorganics: Carmen Pyles 470-524-0629
 Metals: Shene Jones 470-524-0544
 Organics: Mary Bowman 470-524-0639
 GC Mass Spec: Ralph Schulz 470-524-0684
 Microbiology: Mary Bowman 470-524-0709

**GEORGIA DEPARTMENT OF NATURAL RESOURCES
ENVIRONMENTAL PROTECTION DIVISION**

5804 Peachtree Corners East, Norcross, GA 30092-3403
(678) 248-7384

LABORATORY REPORT

TO: Ga EPD Air Program EPD Air Prot Ambient Monitoring 4244 International Pkwy Ste 120 Atlanta, GA 30354	Date Collected: 1/5/2022 Time Collected: 0:00 Sample Collector: J. BRYANT Chlorination: Sample Type: Received By: HZ
	Date Received: 1/19/2022 Time Received: 10:47 AM Project: DATA STUDY Reporting Date: 3/18/2022 Received Temperature: 20.1 °C
Sample ID: AK92588 Facility Name: COVINGTON C2-QA Site ID: C2-QA Location ID: Location Descr:	

ANALYTE	PARAMETER CODE	EPA NOTE	METHOD	RESULT	UNITS	QUALIFIER RL	ANALYSIS		MCL or QC Range
							ANALYST	DATE	
ETO by EPA Method TO-15 QC Batch 194650									
Bromofluorobenzene(Surrogate QC Std.)			EPA TO-15	10.6741	ppbV		HZ	1/21/2022	8 to 12
Ethylene Oxide			EPA TO-15	0.0826	ppbV	0.0232	HZ	1/21/2022	
ETO Results by EPA Method TO-15									
Bromofluorobenzene(Surrogate QC Std.)			EPA TO-15	76.352	ug/m3		HZ	1/21/2022	57.22 to 85.84
Ethylene Oxide			EPA TO-15	0.1489	ug/m3	0.0418	HZ	1/21/2022	

COMMENTS: \$ETO received in lab at 9.5 in Hg.

ug/L: micrograms/liter
 mg/L: milligrams/liter
 mg/kg: milligrams/kilogram
 ug/kg: micrograms/kilogram
 ug/g: micrograms/gram
 ppm: parts per million
 ppb: parts per billion
 org/L: organisms/liter

<: less than
 MCL: Maximum Contaminant Level
 RL: Reporting Limit
 LSPC: result less than lower specification
 USPC: result greater than upper specification
 TIE: Tentatively Identified or Estimated
 VIOL: Violation (result exceeds MCL)

Laboratory Contacts:

Lab Director: Mark Tolbert 470-524-0577
 Inorganics: Carmen Pyles 470-524-0629
 Metals: Shene Jones 470-524-0544
 Organics: Mary Bowman 470-524-0639
 GC Mass Spec: Ralph Schulz 470-524-0684
 Microbiology: Mary Bowman 470-524-0709

**GEORGIA DEPARTMENT OF NATURAL RESOURCES
ENVIRONMENTAL PROTECTION DIVISION**

5804 Peachtree Corners East, Norcross, GA 30092-3403
(678) 248-7384

LABORATORY REPORT

TO: Ga EPD Air Program EPD Air Prot Ambient Monitoring 4244 International Pkwy Ste 120 Atlanta, GA 30354	Date Collected: 1/5/2022 Time Collected: 0:00 Sample Collector: J. BRYANT Chlorination: Sample Type: Received By: HZ
	Date Received: 1/19/2022 Time Received: 10:47 AM Project: DATA STUDY Reporting Date: 3/18/2022 Received Temperature: 23.9 °C
Sample ID: AK92589 Facility Name: FULTON F2 Site ID: F2 Location ID: Location Descr:	

ANALYTE	PARAMETER CODE	EPA NOTE	METHOD	RESULT	UNITS	QUALIFIER RL	ANALYSIS		MCL or QC Range
							ANALYST	DATE	
ETO by EPA Method TO-15 QC Batch 194650									
Bromofluorobenzene(Surrogate QC Std.)			EPA TO-15	11.2666	ppbV		HZ	1/20/2022	8 to 12
Ethylene Oxide			EPA TO-15	0.1430	ppbV	0.0232	HZ	1/20/2022	
ETO Results by EPA Method TO-15									
Bromofluorobenzene(Surrogate QC Std.)			EPA TO-15	80.5901	ug/m3		HZ	1/20/2022	57.22 to 85.84
Ethylene Oxide			EPA TO-15	0.2578	ug/m3	0.0418	HZ	1/20/2022	

COMMENTS: \$ETO received in lab at 4 in Hg.

ug/L: micrograms/liter
 mg/L: milligrams/liter
 mg/kg: milligrams/kilogram
 ug/kg: micrograms/kilogram
 ug/g: micrograms/gram
 ppm: parts per million
 ppb: parts per billion
 org/L: organisms/liter

<: less than
 MCL: Maximum Contaminant Level
 RL: Reporting Limit
 LSPC: result less than lower specification
 USPC: result greater than upper specification
 TIE: Tentatively Identified or Estimated
 VIOL: Violation (result exceeds MCL)

Laboratory Contacts:

Lab Director: Mark Tolbert 470-524-0577
 Inorganics: Carmen Pyles 470-524-0629
 Metals: Shene Jones 470-524-0544
 Organics: Mary Bowman 470-524-0639
 GC Mass Spec: Ralph Schulz 470-524-0684
 Microbiology: Mary Bowman 470-524-0709

**GEORGIA DEPARTMENT OF NATURAL RESOURCES
ENVIRONMENTAL PROTECTION DIVISION**

5804 Peachtree Corners East, Norcross, GA 30092-3403
(678) 248-7384

LABORATORY REPORT

TO: Ga EPD Air Program EPD Air Prot Ambient Monitoring 4244 International Pkwy Ste 120 Atlanta, GA 30354	Date Collected: 1/5/2022 Time Collected: 0:00 Sample Collector: J. BRYANT Chlorination: Sample Type: Received By: HZ
	Date Received: 1/19/2022 Time Received: 10:47 AM Project: DATA STUDY Reporting Date: 3/18/2022 Received Temperature: 20.7 °C
Sample ID: AK92590 Facility Name: FULTON F2-QA Site ID: F2-QA Location ID: Location Descr:	

ANALYTE	PARAMETER CODE	EPA NOTE	METHOD	RESULT	UNITS	QUALIFIER RL	ANALYSIS		MCL or QC Range
							ANALYST	DATE	
ETO by EPA Method TO-15 QC Batch 194650									
Bromofluorobenzene(Surrogate QC Std.)			EPA TO-15	9.8208	ppbV		HZ	1/20/2022	8 to 12
Ethylene Oxide			EPA TO-15	0.1439	ppbV	0.0232	HZ	1/20/2022	
ETO Results by EPA Method TO-15									
Bromofluorobenzene(Surrogate QC Std.)			EPA TO-15	70.2483	ug/m3		HZ	1/20/2022	57.22 to 85.84
Ethylene Oxide			EPA TO-15	0.2594	ug/m3	0.0418	HZ	1/20/2022	

COMMENTS: \$ETO received in lab at 1psi.

ug/L: micrograms/liter
 mg/L: milligrams/liter
 mg/kg: milligrams/kilogram
 ug/kg: micrograms/kilogram
 ug/g: micrograms/gram
 ppm: parts per million
 ppb: parts per billion
 org/L: organisms/liter

<: less than
 MCL: Maximum Contaminant Level
 RL: Reporting Limit
 LSPC: result less than lower specification
 USPC: result greater than upper specification
 TIE: Tentatively Identified or Estimated
 VIOL: Violation (result exceeds MCL)

Laboratory Contacts:

Lab Director: Mark Tolbert 470-524-0577
 Inorganics: Carmen Pyles 470-524-0629
 Metals: Shene Jones 470-524-0544
 Organics: Mary Bowman 470-524-0639
 GC Mass Spec: Ralph Schulz 470-524-0684
 Microbiology: Mary Bowman 470-524-0709

**GEORGIA DEPARTMENT OF NATURAL RESOURCES
ENVIRONMENTAL PROTECTION DIVISION**

5804 Peachtree Corners East, Norcross, GA 30092-3403
(678) 248-7384

LABORATORY REPORT

TO: Ga EPD Air Program EPD Air Prot Ambient Monitoring 4244 International Pkwy Ste 120 Atlanta, GA 30354	Date Collected: 1/5/2022 Time Collected: 0:00 Sample Collector: C. CULBERT Chlorination: Sample Type: Received By: HZ Date Received: 1/14/2022 Time Received: 7:56 AM Project: DATA STUDY Reporting Date: 3/18/2022 Received Temperature: 17.9 °C
Sample ID: AK92592 Facility Name: DOUGLAS - GENERAL COFFEE Site ID: 013-069-0002 Location ID: Location Descr:	

ANALYTE	PARAMETER CODE	EPA NOTE	METHOD	RESULT	UNITS	QUALIFIER RL	ANALYSIS		MCL or QC Range	
							ANALYST	DATE		
ETO by EPA Method TO-15 QC Batch 194650										
Bromofluorobenzene(Surrogate QC Std.)			EPA TO-15	9.8856	ppbV			HZ	1/20/2022	8 to 12
Ethylene Oxide			EPA TO-15	0.0471	ppbV	SQ 2	0.0232	HZ	1/20/2022	
ETO Results by EPA Method TO-15										
Bromofluorobenzene(Surrogate QC Std.)			EPA TO-15	70.7147	ug/m3			HZ	1/20/2022	57.22 to 85.84
Ethylene Oxide			EPA TO-15	0.0849	ug/m3	SQ 2	0.0418	HZ	1/20/2022	

COMMENTS: \$D_ETO received in the lab at 23 psi. Pressure difference of >0.5 psi between receipt from field and receipt in lab.

ug/L: micrograms/liter mg/L: milligrams/liter mg/kg: milligrams/kilogram ug/kg: micrograms/kilogram ug/g: micrograms/gram ppm: parts per million ppb: parts per billion org/L: organisms/liter	<: less than MCL: Maximum Contaminant Level RL: Reporting Limit LSPC: result less than lower specification USPC: result greater than upper specification TIE: Tentatively Identified or Estimated VIOL: Violation (result exceeds MCL)	Laboratory Contacts: Lab Director: Mark Tolbert 470-524-0577 Inorganics: Carmen Pyles 470-524-0629 Metals: Shene Jones 470-524-0544 Organics: Mary Bowman 470-524-0639 GC Mass Spec: Ralph Schulz 470-524-0684 Microbiology: Mary Bowman 470-524-0709
---	--	--

**GEORGIA DEPARTMENT OF NATURAL RESOURCES
ENVIRONMENTAL PROTECTION DIVISION**

5804 Peachtree Corners East, Norcross, GA 30092-3403
(678) 248-7384

LABORATORY REPORT

TO: Ga EPD Air Program EPD Air Prot Ambient Monitoring 4244 International Pkwy Ste 120 Atlanta, GA 30354	Date Collected: 1/6/2022 Time Collected: 0:00 Sample Collector: H. STREET Canister Number: 114313 Canister Cleaned: 12/14/2021 Received By: HZ
	Date Received: 1/13/2022 Time Received: 9:59 AM Project: AIR Reporting Date: 3/18/2022 Received Temperature: 12.7 °C
Sample ID: AK92593 Facility Name: SOUTH DEKALB TEST Site ID: 013-089-0002 Location ID: Location Descr:	

ANALYTE	PARAMETER CODE	EPA NOTE	METHOD	RESULT	UNITS	QUALIFIER RL	ANALYSIS		MCL or QC Range
							ANALYST	DATE	
ETO by EPA Method TO-15 QC Batch 194650									
Bromofluorobenzene(Surrogate QC Std.)			EPA TO-15	10.2619	ppbV		HZ	1/20/2022	8 to 12
Ethylene Oxide			EPA TO-15	0.0750	ppbV	0.0232	HZ	1/20/2022	
ETO Results by EPA Method TO-15									
Bromofluorobenzene(Surrogate QC Std.)			EPA TO-15	73.4035	ug/m3		HZ	1/20/2022	57.22 to 85.84
Ethylene Oxide			EPA TO-15	0.1352	ug/m3	0.0418	HZ	1/20/2022	

COMMENTS: \$ETO received in the lab at 2 in Hg.

ug/L: micrograms/liter
 mg/L: milligrams/liter
 mg/kg: milligrams/kilogram
 ug/kg: micrograms/kilogram
 ug/g: micrograms/gram
 ppm: parts per million
 ppb: parts per billion
 org/L: organisms/liter

<: less than
 MCL: Maximum Contaminant Level
 RL: Reporting Limit
 LSPC: result less than lower specification
 USPC: result greater than upper specification
 TIE: Tentatively Identified or Estimated
 VIOL: Violation (result exceeds MCL)

Laboratory Contacts:

Lab Director: Mark Tolbert 470-524-0577
 Inorganics: Carmen Pyles 470-524-0629
 Metals: Shene Jones 470-524-0544
 Organics: Mary Bowman 470-524-0639
 GC Mass Spec: Ralph Schulz 470-524-0684
 Microbiology: Mary Bowman 470-524-0709

**GEORGIA DEPARTMENT OF NATURAL RESOURCES
ENVIRONMENTAL PROTECTION DIVISION**

5804 Peachtree Corners East, Norcross, GA 30092-3403
(678) 248-7384

LABORATORY REPORT

TO: Ga EPD Air Program EPD Air Prot Ambient Monitoring 4244 International Pkwy Ste 120 Atlanta, GA 30354	Date Collected: 1/5/2022 Time Collected: 0:00 Sample Collector: H. STREET Canister Number: 111207 Canister Cleaned: 12/14/2021 Received By: HZ
	Date Received: 1/7/2022 Time Received: 10:00 AM Project: AIR Reporting Date: 3/18/2022 Received Temperature: 21.5 °C
Sample ID: AK92594 Facility Name: SOUTH DEKALB Site ID: 013-089-0002 Location ID: Location Descr:	

ANALYTE	PARAMETER CODE	EPA NOTE	METHOD	RESULT	UNITS	QUALIFIER RL	ANALYSIS		MCL or QC Range
							ANALYST	DATE	
ETO by EPA Method TO-15 QC Batch 194450									
Bromofluorobenzene(Surrogate QC Std.)			EPA TO-15	9.5809	ppbV		KL	1/7/2022	8 to 12
Ethylene Oxide			EPA TO-15	0.0747	ppbV	0.0232	KL	1/7/2022	
ETO Results by EPA Method TO-15									
Bromofluorobenzene(Surrogate QC Std.)			EPA TO-15	68.5323	ug/m3		KL	1/7/2022	57.22 to 85.84
Ethylene Oxide			EPA TO-15	0.1347	ug/m3	0.0418	KL	1/7/2022	

COMMENTS: \$ETO received in the lab at 5.2 psi.

ug/L: micrograms/liter mg/L: milligrams/liter mg/kg: milligrams/kilogram ug/kg: micrograms/kilogram ug/g: micrograms/gram ppm: parts per million ppb: parts per billion org/L: organisms/liter	<: less than MCL: Maximum Contaminant Level RL: Reporting Limit LSPC: result less than lower specification USPC: result greater than upper specification TIE: Tentatively Identified or Estimated VIOL: Violation (result exceeds MCL)	Laboratory Contacts: Lab Director: Mark Tolbert 470-524-0577 Inorganics: Carmen Pyles 470-524-0629 Metals: Shene Jones 470-524-0544 Organics: Mary Bowman 470-524-0639 GC Mass Spec: Ralph Schulz 470-524-0684 Microbiology: Mary Bowman 470-524-0709
---	--	--

**GEORGIA DEPARTMENT OF NATURAL RESOURCES
ENVIRONMENTAL PROTECTION DIVISION**

5804 Peachtree Corners East, Norcross, GA 30092-3403
(678) 248-7384

LABORATORY REPORT

TO: Ga EPD Air Program EPD Air Prot Ambient Monitoring 4244 International Pkwy Ste 120 Atlanta, GA 30354	Date Collected: 1/6/2022 Time Collected: 0:00 Sample Collector: H. STREET Canister Number: 110342 Canister Cleaned: 12/14/2021 Received By: HZ
	Date Received: 1/13/2022 Time Received: 9:59 AM Project: AIR Reporting Date: 3/18/2022 Received Temperature: 13.0 °C
Sample ID: AK92595 Facility Name: SOUTH DEKALB TEST Site ID: 013-089-0002 Location ID: Location Descr:	

ANALYTE	PARAMETER CODE	EPA NOTE	METHOD	RESULT	UNITS	QUALIFIER RL	ANALYSIS		MCL or QC Range	
							ANALYST	DATE		
ETO by EPA Method TO-15 QC Batch 194650										
Bromofluorobenzene(Surrogate QC Std.)			EPA TO-15	10.0021	ppbV			HZ	1/20/2022	8 to 12
Ethylene Oxide			EPA TO-15	0.0568	ppbV	SQ	0.0232	HZ	1/20/2022	
ETO Results by EPA Method TO-15										
Bromofluorobenzene(Surrogate QC Std.)			EPA TO-15	71.5451	ug/m3			HZ	1/20/2022	57.22 to 85.84
Ethylene Oxide			EPA TO-15	0.1024	ug/m3	SQ	0.0418	HZ	1/20/2022	

COMMENTS: \$ETO received in the lab at 2.5 in Hg.

ug/L: micrograms/liter
 mg/L: milligrams/liter
 mg/kg: milligrams/kilogram
 ug/kg: micrograms/kilogram
 ug/g: micrograms/gram
 ppm: parts per million
 ppb: parts per billion
 org/L: organisms/liter

<: less than
 MCL: Maximum Contaminant Level
 RL: Reporting Limit
 LSPC: result less than lower specification
 USPC: result greater than upper specification
 TIE: Tentatively Identified or Estimated
 VIOL: Violation (result exceeds MCL)

Laboratory Contacts:

Lab Director: Mark Tolbert 470-524-0577
 Inorganics: Carmen Pyles 470-524-0629
 Metals: Shene Jones 470-524-0544
 Organics: Mary Bowman 470-524-0639
 GC Mass Spec: Ralph Schulz 470-524-0684
 Microbiology: Mary Bowman 470-524-0709

**GEORGIA DEPARTMENT OF NATURAL RESOURCES
ENVIRONMENTAL PROTECTION DIVISION**

5804 Peachtree Corners East, Norcross, GA 30092-3403
(678) 248-7384

LABORATORY REPORT

TO: Ga EPD Air Program EPD Air Prot Ambient Monitoring 4244 International Pkwy Ste 120 Atlanta, GA 30354	Date Collected: 1/5/2022 Time Collected: 0:00 Sample Collector: H. STREET Chlorination: Sample Type: Received By: HZ
	Date Received: 1/7/2022 Time Received: 10:00 AM Project: Reporting Date: 3/18/2022 Received Temperature: 19.6 °C
Sample ID: AK92596 Facility Name: SOUTH DEKALB QA Site ID: 013-089-0002 Location ID: Location Descr:	

ANALYTE	PARAMETER CODE	EPA NOTE	METHOD	RESULT	UNITS	QUALIFIER RL	ANALYSIS		MCL or QC Range
							ANALYST	DATE	
ETO by EPA Method TO-15									
Bromofluorobenzene(Surrogate QC Std.)			EPA TO-15	AL	ppbV		KL	1/7/2022	8 to 12
Ethylene Oxide			EPA TO-15	AL	ppbV	0.0232	KL	1/7/2022	
ETO Results by EPA Method TO-15									
Bromofluorobenzene(Surrogate QC Std.)			EPA TO-15	AL	ug/m3		KL	1/7/2022	57.22 to 85.84
Ethylene Oxide			EPA TO-15	AL	ug/m3	0.0418	KL	1/7/2022	

ug/L: micrograms/liter
 mg/L: milligrams/liter
 mg/kg: milligrams/kilogram
 ug/kg: micrograms/kilogram
 ug/g: micrograms/gram
 ppm: parts per million
 ppb: parts per billion
 org/L: organisms/liter

<: less than
 MCL: Maximum Contaminant Level
 RL: Reporting Limit
 LSPC: result less than lower specification
 USPC: result greater than upper specification
 TIE: Tentatively Identified or Estimated
 VIOL: Violation (result exceeds MCL)

Laboratory Contacts:

Lab Director: Mark Tolbert 470-524-0577
 Inorganics: Carmen Pyles 470-524-0629
 Metals: Shene Jones 470-524-0544
 Organics: Mary Bowman 470-524-0639
 GC Mass Spec: Ralph Schulz 470-524-0684
 Microbiology: Mary Bowman 470-524-0709

**GEORGIA DEPARTMENT OF NATURAL RESOURCES
ENVIRONMENTAL PROTECTION DIVISION**

5804 Peachtree Corners East, Norcross, GA 30092-3403
(678) 248-7384

LABORATORY REPORT

TO: Ga EPD Air Program EPD Air Prot Ambient Monitoring 4244 International Pkwy Ste 120 Atlanta, GA 30354	Date Collected: 1/12/2022 Time Collected: 0:00 Sample Collector: H. STREET Canister Number: 114386 Canister Cleaned: 12/14/2021 Received By: HZ
	Date Received: 1/19/2022 Time Received: 10:47 AM Project: AIR Reporting Date: 3/18/2022 Received Temperature: 19.6 °C
Sample ID: AK92597 Facility Name: SOUTH DEKALB TEST Site ID: 013-089-0002 Location ID: Location Descr:	

ANALYTE	PARAMETER CODE	EPA NOTE	METHOD	RESULT	UNITS	QUALIFIER RL	ANALYSIS		MCL or QC Range
							ANALYST	DATE	
ETO by EPA Method TO-15 QC Batch 194650									
Bromofluorobenzene(Surrogate QC Std.)			EPA TO-15	10.5281	ppbV		HZ	1/20/2022	8 to 12
Ethylene Oxide			EPA TO-15	0.1589	ppbV	0.0232	HZ	1/20/2022	
ETO Results by EPA Method TO-15									
Bromofluorobenzene(Surrogate QC Std.)			EPA TO-15	75.3076	ug/m3		HZ	1/20/2022	57.22 to 85.84
Ethylene Oxide			EPA TO-15	0.2864	ug/m3	0.0418	HZ	1/20/2022	

COMMENTS: \$ETO received in lab at 1.5 in Hg.

ug/L: micrograms/liter
 mg/L: milligrams/liter
 mg/kg: milligrams/kilogram
 ug/kg: micrograms/kilogram
 ug/g: micrograms/gram
 ppm: parts per million
 ppb: parts per billion
 org/L: organisms/liter

<: less than
 MCL: Maximum Contaminant Level
 RL: Reporting Limit
 LSPC: result less than lower specification
 USPC: result greater than upper specification
 TIE: Tentatively Identified or Estimated
 VIOL: Violation (result exceeds MCL)

Laboratory Contacts:

Lab Director: Mark Tolbert 470-524-0577
 Inorganics: Carmen Pyles 470-524-0629
 Metals: Shene Jones 470-524-0544
 Organics: Mary Bowman 470-524-0639
 GC Mass Spec: Ralph Schulz 470-524-0684
 Microbiology: Mary Bowman 470-524-0709

**GEORGIA DEPARTMENT OF NATURAL RESOURCES
ENVIRONMENTAL PROTECTION DIVISION**

5804 Peachtree Corners East, Norcross, GA 30092-3403
(678) 248-7384

LABORATORY REPORT

TO: Ga EPD Air Program EPD Air Prot Ambient Monitoring 4244 International Pkwy Ste 120 Atlanta, GA 30354	Date Collected: 1/12/2022 Time Collected: 0:00 Sample Collector: H. STREET Canister Number: 114378 Canister Cleaned: 12/14/2021 Received By: HZ
	Date Received: 1/19/2022 Time Received: 10:47 AM Project: AIR Reporting Date: 3/18/2022 Received Temperature: 19.9 °C
Sample ID: AK92599 Facility Name: SOUTH DEKALB TEST Site ID: 013-089-0002 Location ID: Location Descr:	

ANALYTE	PARAMETER CODE	EPA NOTE	METHOD	RESULT	UNITS	QUALIFIER RL	ANALYSIS		MCL or QC Range
							ANALYST	DATE	
ETO by EPA Method TO-15 QC Batch 194650									
Bromofluorobenzene(Surrogate QC Std.)			EPA TO-15	10.0230	ppbV		HZ	1/21/2022	8 to 12
Ethylene Oxide			EPA TO-15	0.1363	ppbV	0.0232	HZ	1/21/2022	
ETO Results by EPA Method TO-15									
Bromofluorobenzene(Surrogate QC Std.)			EPA TO-15	71.6946	ug/m3		HZ	1/21/2022	57.22 to 85.84
Ethylene Oxide			EPA TO-15	0.2457	ug/m3	0.0418	HZ	1/21/2022	

COMMENTS: \$ETO received in lab at 3 in Hg.

ug/L: micrograms/liter
 mg/L: milligrams/liter
 mg/kg: milligrams/kilogram
 ug/kg: micrograms/kilogram
 ug/g: micrograms/gram
 ppm: parts per million
 ppb: parts per billion
 org/L: organisms/liter

<: less than
 MCL: Maximum Contaminant Level
 RL: Reporting Limit
 LSPC: result less than lower specification
 USPC: result greater than upper specification
 TIE: Tentatively Identified or Estimated
 VIOL: Violation (result exceeds MCL)

Laboratory Contacts:

Lab Director: Mark Tolbert 470-524-0577
 Inorganics: Carmen Pyles 470-524-0629
 Metals: Shene Jones 470-524-0544
 Organics: Mary Bowman 470-524-0639
 GC Mass Spec: Ralph Schulz 470-524-0684
 Microbiology: Mary Bowman 470-524-0709

**GEORGIA DEPARTMENT OF NATURAL RESOURCES
ENVIRONMENTAL PROTECTION DIVISION**

5804 Peachtree Corners East, Norcross, GA 30092-3403
(678) 248-7384

LABORATORY REPORT

TO: Ga EPD Air Program EPD Air Prot Ambient Monitoring 4244 International Pkwy Ste 120 Atlanta, GA 30354	Date Collected: 1/17/2022 Time Collected: 0:00 Sample Collector: J. BRYANT Chlorination: Sample Type: Received By: HZ
	Date Received: 2/1/2022 Time Received: 11:05 AM Project: DATA STUDY Reporting Date: 3/18/2022 Received Temperature: 14.7 °C
Sample ID: AK92977 Facility Name: COBB S7-SA Site ID: S7-SA Location ID: QCCAN Location Descr:	

ANALYTE	PARAMETER CODE	EPA NOTE	METHOD	RESULT	UNITS	QUALIFIER RL	ANALYSIS		MCL or QC Range
							ANALYST	DATE	
ETO by EPA Method TO-15 QC Batch 194767									
Bromofluorobenzene(Surrogate QC Std.)			EPA TO-15	9.9610	ppbV		KL	2/3/2022	8 to 12
Ethylene Oxide			EPA TO-15	0.0301	ppbV	SQ	0.0232	KL	2/3/2022
ETO Results by EPA Method TO-15									
Bromofluorobenzene(Surrogate QC Std.)			EPA TO-15	71.2511	ug/m3		KL	2/3/2022	57.22 to 85.84
Ethylene Oxide			EPA TO-15	0.0543	ug/m3	SQ	0.0418	KL	2/3/2022

COMMENTS: \$ETO received in the lab at 6.5 in Hg.

ug/L: micrograms/liter mg/L: milligrams/liter mg/kg: milligrams/kilogram ug/kg: micrograms/kilogram ug/g: micrograms/gram ppm: parts per million ppb: parts per billion org/L: organisms/liter	<: less than MCL: Maximum Contaminant Level RL: Reporting Limit LSPC: result less than lower specification USPC: result greater than upper specification TIE: Tentatively Identified or Estimated VIOL: Violation (result exceeds MCL)	Laboratory Contacts: Lab Director: Mark Tolbert 470-524-0577 Inorganics: Carmen Pyles 470-524-0629 Metals: Shene Jones 470-524-0544 Organics: Mary Bowman 470-524-0639 GC Mass Spec: Ralph Schulz 470-524-0684 Microbiology: Mary Bowman 470-524-0709
---	--	--

**GEORGIA DEPARTMENT OF NATURAL RESOURCES
ENVIRONMENTAL PROTECTION DIVISION**

5804 Peachtree Corners East, Norcross, GA 30092-3403
(678) 248-7384

LABORATORY REPORT

TO: Ga EPD Air Program EPD Air Prot Ambient Monitoring 4244 International Pkwy Ste 120 Atlanta, GA 30354	Date Collected: 1/18/2022 Time Collected: 0:00 Sample Collector: H. STREET Canister Number: 110327 Canister Cleaned: 12/27/2021 Received By: HZ
	Date Received: 1/25/2022 Time Received: 10:43 AM Project: AIR Reporting Date: 3/18/2022 Received Temperature: 19.5 °C
Sample ID: AK92978 Facility Name: SOUTH DEKALB TEST Site ID: 013-089-0002 Location ID: Location Descr:	

ANALYTE	PARAMETER CODE	EPA NOTE	METHOD	RESULT	UNITS	QUALIFIER RL	ANALYSIS		MCL or QC Range
							ANALYST	DATE	
ETO by EPA Method TO-15 QC Batch 194683									
Bromofluorobenzene(Surrogate QC Std.)			EPA TO-15	11.0166	ppbV		KL	1/26/2022	8 to 12
Ethylene Oxide			EPA TO-15	0.1793	ppbV	0.0232	KL	1/26/2022	
ETO Results by EPA Method TO-15									
Bromofluorobenzene(Surrogate QC Std.)			EPA TO-15	78.8019	ug/m3		KL	1/26/2022	57.22 to 85.84
Ethylene Oxide			EPA TO-15	0.3232	ug/m3	0.0418	KL	1/26/2022	

COMMENTS: \$ETO received in the lab at 2 in Hg.

ug/L: micrograms/liter mg/L: milligrams/liter mg/kg: milligrams/kilogram ug/kg: micrograms/kilogram ug/g: micrograms/gram ppm: parts per million ppb: parts per billion org/L: organisms/liter	<: less than MCL: Maximum Contaminant Level RL: Reporting Limit LSPC: result less than lower specification USPC: result greater than upper specification TIE: Tentatively Identified or Estimated VIOL: Violation (result exceeds MCL)	Laboratory Contacts: Lab Director: Mark Tolbert 470-524-0577 Inorganics: Carmen Pyles 470-524-0629 Metals: Shene Jones 470-524-0544 Organics: Mary Bowman 470-524-0639 GC Mass Spec: Ralph Schulz 470-524-0684 Microbiology: Mary Bowman 470-524-0709
---	--	--

**GEORGIA DEPARTMENT OF NATURAL RESOURCES
ENVIRONMENTAL PROTECTION DIVISION**

5804 Peachtree Corners East, Norcross, GA 30092-3403
(678) 248-7384

LABORATORY REPORT

TO: Ga EPD Air Program EPD Air Prot Ambient Monitoring 4244 International Pkwy Ste 120 Atlanta, GA 30354	Date Collected: 1/17/2022 Time Collected: 0:00 Sample Collector: J. BRYANT Chlorination: Sample Type: Received By: HZ
	Date Received: 2/1/2022 Time Received: 11:06 AM Project: DATA STUDY Reporting Date: 3/18/2022 Received Temperature: 14.9 °C
Sample ID: AK92979 Facility Name: COBB S6-SA Site ID: S6-SA Location ID: Location Descr:	

ANALYTE	PARAMETER CODE	EPA NOTE	METHOD	RESULT	UNITS	QUALIFIER RL	ANALYSIS		MCL or QC Range
							ANALYST	DATE	
ETO by EPA Method TO-15 QC Batch 194767									
Bromofluorobenzene(Surrogate QC Std.)			EPA TO-15	9.7611	ppbV		KL	2/3/2022	8 to 12
Ethylene Oxide			EPA TO-15	0.0554	ppbV	SQ	0.0232	KL	2/3/2022
ETO Results by EPA Method TO-15									
Bromofluorobenzene(Surrogate QC Std.)			EPA TO-15	69.8213	ug/m3		KL	2/3/2022	57.22 to 85.84
Ethylene Oxide			EPA TO-15	0.0999	ug/m3	SQ	0.0418	KL	2/3/2022

COMMENTS: \$ETO received in the lab at 4 in Hg.

ug/L: micrograms/liter
 mg/L: milligrams/liter
 mg/kg: milligrams/kilogram
 ug/kg: micrograms/kilogram
 ug/g: micrograms/gram
 ppm: parts per million
 ppb: parts per billion
 org/L: organisms/liter

<: less than
 MCL: Maximum Contaminant Level
 RL: Reporting Limit
 LSPC: result less than lower specification
 USPC: result greater than upper specification
 TIE: Tentatively Identified or Estimated
 VIOL: Violation (result exceeds MCL)

Laboratory Contacts:

Lab Director: Mark Tolbert 470-524-0577
 Inorganics: Carmen Pyles 470-524-0629
 Metals: Shene Jones 470-524-0544
 Organics: Mary Bowman 470-524-0639
 GC Mass Spec: Ralph Schulz 470-524-0684
 Microbiology: Mary Bowman 470-524-0709

**GEORGIA DEPARTMENT OF NATURAL RESOURCES
ENVIRONMENTAL PROTECTION DIVISION**

5804 Peachtree Corners East, Norcross, GA 30092-3403
(678) 248-7384

LABORATORY REPORT

TO: Ga EPD Air Program EPD Air Prot Ambient Monitoring 4244 International Pkwy Ste 120 Atlanta, GA 30354	Date Collected: 1/17/2022 Time Collected: 0:00 Sample Collector: J. BRYANT Chlorination: Sample Type: Received By: HZ
	Date Received: 2/1/2022 Time Received: 11:05 AM Project: DATA STUDY Reporting Date: 3/18/2022 Received Temperature: 15.8 °C
Sample ID: AK92980 Facility Name: COBB S2 Site ID: S2 Location ID: Location Descr:	

ANALYTE	PARAMETER CODE	EPA NOTE	METHOD	RESULT	UNITS	QUALIFIER RL	ANALYSIS		MCL or QC Range
							ANALYST	DATE	
ETO by EPA Method TO-15 QC Batch 194767									
Bromofluorobenzene(Surrogate QC Std.)			EPA TO-15	9.7841	ppbV		KL	2/3/2022	8 to 12
Ethylene Oxide			EPA TO-15	0.0286	ppbV	SQ	0.0232	KL	2/3/2022
ETO Results by EPA Method TO-15									
Bromofluorobenzene(Surrogate QC Std.)			EPA TO-15	69.9858	ug/m3		KL	2/3/2022	57.22 to 85.84
Ethylene Oxide			EPA TO-15	0.0516	ug/m3	SQ	0.0418	KL	2/3/2022

COMMENTS: \$ETO received in the lab at 2 in Hg.

ug/L: micrograms/liter
 mg/L: milligrams/liter
 mg/kg: milligrams/kilogram
 ug/kg: micrograms/kilogram
 ug/g: micrograms/gram
 ppm: parts per million
 ppb: parts per billion
 org/L: organisms/liter

<: less than
 MCL: Maximum Contaminant Level
 RL: Reporting Limit
 LSPC: result less than lower specification
 USPC: result greater than upper specification
 TIE: Tentatively Identified or Estimated
 VIOL: Violation (result exceeds MCL)

Laboratory Contacts:

Lab Director: Mark Tolbert 470-524-0577
 Inorganics: Carmen Pyles 470-524-0629
 Metals: Shene Jones 470-524-0544
 Organics: Mary Bowman 470-524-0639
 GC Mass Spec: Ralph Schulz 470-524-0684
 Microbiology: Mary Bowman 470-524-0709

**GEORGIA DEPARTMENT OF NATURAL RESOURCES
ENVIRONMENTAL PROTECTION DIVISION**

5804 Peachtree Corners East, Norcross, GA 30092-3403
(678) 248-7384

LABORATORY REPORT

TO: Ga EPD Air Program EPD Air Prot Ambient Monitoring 4244 International Pkwy Ste 120 Atlanta, GA 30354	Date Collected: 1/18/2022 Time Collected: 0:00 Sample Collector: H. STREET Canister Number: 110258 Canister Cleaned: 12/27/2021 Received By: HZ
	Date Received: 1/25/2022 Time Received: 10:43 AM Project: AIR Reporting Date: 3/18/2022 Received Temperature: 19.7 °C
Sample ID: AK92981 Facility Name: SOUTH DEKALB TEST Site ID: 013-089-0002 Location ID: Location Descr:	

ANALYTE	PARAMETER CODE	EPA NOTE	METHOD	RESULT	UNITS	QUALIFIER RL	ANALYSIS		MCL or QC Range
							ANALYST	DATE	
ETO by EPA Method TO-15 QC Batch 194683									
Bromofluorobenzene(Surrogate QC Std.)			EPA TO-15	10.0208	ppbV		KL	1/26/2022	8 to 12
Ethylene Oxide			EPA TO-15	0.1432	ppbV	0.0232	KL	1/26/2022	
ETO Results by EPA Method TO-15									
Bromofluorobenzene(Surrogate QC Std.)			EPA TO-15	71.6789	ug/m3		KL	1/26/2022	57.22 to 85.84
Ethylene Oxide			EPA TO-15	0.2581	ug/m3	0.0418	KL	1/26/2022	

COMMENTS: \$ETO received in the lab at 3 in Hg.

ug/L: micrograms/liter
 mg/L: milligrams/liter
 mg/kg: milligrams/kilogram
 ug/kg: micrograms/kilogram
 ug/g: micrograms/gram
 ppm: parts per million
 ppb: parts per billion
 org/L: organisms/liter

<: less than
 MCL: Maximum Contaminant Level
 RL: Reporting Limit
 LSPC: result less than lower specification
 USPC: result greater than upper specification
 TIE: Tentatively Identified or Estimated
 VIOL: Violation (result exceeds MCL)

Laboratory Contacts:

Lab Director: Mark Tolbert 470-524-0577
 Inorganics: Carmen Pyles 470-524-0629
 Metals: Shene Jones 470-524-0544
 Organics: Mary Bowman 470-524-0639
 GC Mass Spec: Ralph Schulz 470-524-0684
 Microbiology: Mary Bowman 470-524-0709

**GEORGIA DEPARTMENT OF NATURAL RESOURCES
ENVIRONMENTAL PROTECTION DIVISION**

5804 Peachtree Corners East, Norcross, GA 30092-3403
(678) 248-7384

LABORATORY REPORT

TO: Ga EPD Air Program EPD Air Prot Ambient Monitoring 4244 International Pkwy Ste 120 Atlanta, GA 30354	Date Collected: 1/17/2022 Time Collected: 0:00 Sample Collector: J. BRYANT Chlorination: Sample Type: Received By: HZ
	Date Received: 2/1/2022 Time Received: 11:05 AM Project: DATA STUDY Reporting Date: 3/18/2022 Received Temperature: 15.4 °C
Sample ID: AK92982 Facility Name: COVINGTON C3-SA Site ID: C3-SA Location ID: Location Descr:	

ANALYTE	PARAMETER CODE	EPA NOTE	METHOD	RESULT	UNITS	QUALIFIER RL	ANALYSIS		MCL or QC Range
							ANALYST	DATE	
ETO by EPA Method TO-15 QC Batch 194767									
Bromofluorobenzene(Surrogate QC Std.)			EPA TO-15	9.9285	ppbV		KL	2/3/2022	8 to 12
Ethylene Oxide			EPA TO-15	0.0432	ppbV	SQ	0.0232	KL	2/3/2022
ETO Results by EPA Method TO-15									
Bromofluorobenzene(Surrogate QC Std.)			EPA TO-15	71.0187	ug/m3		KL	2/3/2022	57.22 to 85.84
Ethylene Oxide			EPA TO-15	0.0779	ug/m3	SQ	0.0418	KL	2/3/2022

COMMENTS: \$ETO received in the lab at 6 in Hg.

ug/L: micrograms/liter
 mg/L: milligrams/liter
 mg/kg: milligrams/kilogram
 ug/kg: micrograms/kilogram
 ug/g: micrograms/gram
 ppm: parts per million
 ppb: parts per billion
 org/L: organisms/liter

<: less than
 MCL: Maximum Contaminant Level
 RL: Reporting Limit
 LSPC: result less than lower specification
 USPC: result greater than upper specification
 TIE: Tentatively Identified or Estimated
 VIOL: Violation (result exceeds MCL)

Laboratory Contacts:

Lab Director: Mark Tolbert 470-524-0577
 Inorganics: Carmen Pyles 470-524-0629
 Metals: Shene Jones 470-524-0544
 Organics: Mary Bowman 470-524-0639
 GC Mass Spec: Ralph Schulz 470-524-0684
 Microbiology: Mary Bowman 470-524-0709

**GEORGIA DEPARTMENT OF NATURAL RESOURCES
ENVIRONMENTAL PROTECTION DIVISION**

5804 Peachtree Corners East, Norcross, GA 30092-3403
(678) 248-7384

LABORATORY REPORT

TO: Ga EPD Air Program EPD Air Prot Ambient Monitoring 4244 International Pkwy Ste 120 Atlanta, GA 30354	Date Collected: 1/17/2022 Time Collected: 0:00 Sample Collector: J. BRYANT Chlorination: Sample Type: Received By: HZ
	Date Received: 2/1/2022 Time Received: 11:05 AM Project: DATA STUDY Reporting Date: 3/18/2022 Received Temperature: 15.2 °C
Sample ID: AK92983 Facility Name: COVINGTON C2 Site ID: C2 Location ID: Location Descr:	

ANALYTE	PARAMETER CODE	EPA NOTE	METHOD	RESULT	UNITS	QUALIFIER RL	ANALYSIS		MCL or QC Range
							ANALYST	DATE	
ETO by EPA Method TO-15 QC Batch 194767									
Bromofluorobenzene(Surrogate QC Std.)			EPA TO-15	9.7919	ppbV		KL	2/3/2022	8 to 12
Ethylene Oxide			EPA TO-15	0.0741	ppbV	0.0232	KL	2/3/2022	
ETO Results by EPA Method TO-15									
Bromofluorobenzene(Surrogate QC Std.)			EPA TO-15	70.0416	ug/m3		KL	2/3/2022	57.22 to 85.84
Ethylene Oxide			EPA TO-15	0.1336	ug/m3	0.0418	KL	2/3/2022	

COMMENTS: \$ETO received in the lab at 8.5 in Hg.

ug/L: micrograms/liter
 mg/L: milligrams/liter
 mg/kg: milligrams/kilogram
 ug/kg: micrograms/kilogram
 ug/g: micrograms/gram
 ppm: parts per million
 ppb: parts per billion
 org/L: organisms/liter

<: less than
 MCL: Maximum Contaminant Level
 RL: Reporting Limit
 LSPC: result less than lower specification
 USPC: result greater than upper specification
 TIE: Tentatively Identified or Estimated
 VIOL: Violation (result exceeds MCL)

Laboratory Contacts:

Lab Director: Mark Tolbert 470-524-0577
 Inorganics: Carmen Pyles 470-524-0629
 Metals: Shene Jones 470-524-0544
 Organics: Mary Bowman 470-524-0639
 GC Mass Spec: Ralph Schulz 470-524-0684
 Microbiology: Mary Bowman 470-524-0709

**GEORGIA DEPARTMENT OF NATURAL RESOURCES
ENVIRONMENTAL PROTECTION DIVISION**

5804 Peachtree Corners East, Norcross, GA 30092-3403
(678) 248-7384

LABORATORY REPORT

TO: Ga EPD Air Program EPD Air Prot Ambient Monitoring 4244 International Pkwy Ste 120 Atlanta, GA 30354	Date Collected: 1/17/2022 Time Collected: 0:00 Sample Collector: J. BRYANT Chlorination: Sample Type: Received By: HZ
	Date Received: 2/1/2022 Time Received: 11:05 AM Project: DATA STUDY Reporting Date: 3/18/2022 Received Temperature: 15.8 °C
Sample ID: AK92984 Facility Name: FULTON F2 Site ID: F2 Location ID: Location Descr:	

ANALYTE	PARAMETER CODE	EPA NOTE	METHOD	RESULT	UNITS	QUALIFIER RL	ANALYSIS		MCL or QC Range
							ANALYST	DATE	
ETO by EPA Method TO-15 QC Batch 194767									
Bromofluorobenzene(Surrogate QC Std.)			EPA TO-15	9.6886	ppbV		KL	2/3/2022	8 to 12
Ethylene Oxide			EPA TO-15	0.0357	ppbV	SQ	0.0232	KL	2/3/2022
ETO Results by EPA Method TO-15									
Bromofluorobenzene(Surrogate QC Std.)			EPA TO-15	69.3027	ug/m3		KL	2/3/2022	57.22 to 85.84
Ethylene Oxide			EPA TO-15	0.0644	ug/m3	SQ	0.0418	KL	2/3/2022

COMMENTS: \$ETO received in the lab at 3 in Hg.

ug/L: micrograms/liter
 mg/L: milligrams/liter
 mg/kg: milligrams/kilogram
 ug/kg: micrograms/kilogram
 ug/g: micrograms/gram
 ppm: parts per million
 ppb: parts per billion
 org/L: organisms/liter

<: less than
 MCL: Maximum Contaminant Level
 RL: Reporting Limit
 LSPC: result less than lower specification
 USPC: result greater than upper specification
 TIE: Tentatively Identified or Estimated
 VIOL: Violation (result exceeds MCL)

Laboratory Contacts:

Lab Director: Mark Tolbert 470-524-0577
 Inorganics: Carmen Pyles 470-524-0629
 Metals: Shene Jones 470-524-0544
 Organics: Mary Bowman 470-524-0639
 GC Mass Spec: Ralph Schulz 470-524-0684
 Microbiology: Mary Bowman 470-524-0709

**GEORGIA DEPARTMENT OF NATURAL RESOURCES
ENVIRONMENTAL PROTECTION DIVISION**

5804 Peachtree Corners East, Norcross, GA 30092-3403
(678) 248-7384

LABORATORY REPORT

TO: Ga EPD Air Program EPD Air Prot Ambient Monitoring 4244 International Pkwy Ste 120 Atlanta, GA 30354	Date Collected: 1/17/2022 Time Collected: 0:00 Sample Collector: J. BRYANT Chlorination: Sample Type: Received By: KL
	Date Received: 2/1/2022 Time Received: 11:05 AM Project: DATA STUDY Reporting Date: 3/18/2022 Received Temperature: 15.4 °C
Sample ID: AK92989 Facility Name: FULTON F1-SA Site ID: F1-SA Location ID: QCCAN Location Descr:	

ANALYTE	PARAMETER CODE	EPA NOTE	METHOD	RESULT	UNITS	QUALIFIER RL	ANALYSIS		MCL or QC Range
							ANALYST	DATE	
ETO by EPA Method TO-15 QC Batch 194767									
Bromofluorobenzene(Surrogate QC Std.)			EPA TO-15	9.8805	ppbV		KL	2/3/2022	8 to 12
Ethylene Oxide			EPA TO-15	0.0334	ppbV	SQ	0.0232	KL	2/3/2022
ETO Results by EPA Method TO-15									
Bromofluorobenzene(Surrogate QC Std.)			EPA TO-15	70.6753	ug/m3		KL	2/3/2022	57.22 to 85.84
Ethylene Oxide			EPA TO-15	0.0602	ug/m3	SQ	0.0418	KL	2/3/2022

COMMENTS: \$ETO received in the lab at 8.5 in Hg.

ug/L: micrograms/liter
 mg/L: milligrams/liter
 mg/kg: milligrams/kilogram
 ug/kg: micrograms/kilogram
 ug/g: micrograms/gram
 ppm: parts per million
 ppb: parts per billion
 org/L: organisms/liter

<: less than
 MCL: Maximum Contaminant Level
 RL: Reporting Limit
 LSPC: result less than lower specification
 USPC: result greater than upper specification
 TIE: Tentatively Identified or Estimated
 VIOL: Violation (result exceeds MCL)

Laboratory Contacts:

Lab Director: Mark Tolbert 470-524-0577
 Inorganics: Carmen Pyles 470-524-0629
 Metals: Shene Jones 470-524-0544
 Organics: Mary Bowman 470-524-0639
 GC Mass Spec: Ralph Schulz 470-524-0684
 Microbiology: Mary Bowman 470-524-0709

**GEORGIA DEPARTMENT OF NATURAL RESOURCES
ENVIRONMENTAL PROTECTION DIVISION**

5804 Peachtree Corners East, Norcross, GA 30092-3403
(678) 248-7384

LABORATORY REPORT

TO: Ga EPD Air Program EPD Air Prot Ambient Monitoring 4244 International Pkwy Ste 120 Atlanta, GA 30354	Date Collected: 1/17/2022 Time Collected: 0:00 Sample Collector: H. STREET Canister Number: 114334 Canister Cleaned: 12/27/2021 Received By: KL
	Date Received: 1/19/2022 Time Received: 10:47 AM Project: AIR Reporting Date: 3/18/2022 Received Temperature: 19.8 °C
Sample ID: AK92990 Facility Name: SOUTH DEKALB Site ID: 013-089-0002 Location ID: Location Descr:	

ANALYTE	PARAMETER CODE	EPA NOTE	METHOD	RESULT	UNITS	QUALIFIER RL	ANALYSIS		MCL or QC Range
							ANALYST	DATE	
ETO by EPA Method TO-15 QC Batch 194650									
Bromofluorobenzene(Surrogate QC Std.)			EPA TO-15	9.7993	ppbV		HZ	1/21/2022	8 to 12
Ethylene Oxide			EPA TO-15	0.0410	ppbV	SQ	0.0232	HZ	1/21/2022
ETO Results by EPA Method TO-15									
Bromofluorobenzene(Surrogate QC Std.)			EPA TO-15	70.0945	ug/m3		HZ	1/21/2022	57.22 to 85.84
Ethylene Oxide			EPA TO-15	0.0739	ug/m3	SQ	0.0418	HZ	1/21/2022

COMMENTS: \$ETO received in lab at 5.4psi.

ug/L: micrograms/liter
 mg/L: milligrams/liter
 mg/kg: milligrams/kilogram
 ug/kg: micrograms/kilogram
 ug/g: micrograms/gram
 ppm: parts per million
 ppb: parts per billion
 org/L: organisms/liter

<: less than
 MCL: Maximum Contaminant Level
 RL: Reporting Limit
 LSPC: result less than lower specification
 USPC: result greater than upper specification
 TIE: Tentatively Identified or Estimated
 VIOL: Violation (result exceeds MCL)

Laboratory Contacts:

Lab Director: Mark Tolbert 470-524-0577
 Inorganics: Carmen Pyles 470-524-0629
 Metals: Shene Jones 470-524-0544
 Organics: Mary Bowman 470-524-0639
 GC Mass Spec: Ralph Schulz 470-524-0684
 Microbiology: Mary Bowman 470-524-0709

**GEORGIA DEPARTMENT OF NATURAL RESOURCES
ENVIRONMENTAL PROTECTION DIVISION**

5804 Peachtree Corners East, Norcross, GA 30092-3403
(678) 248-7384

LABORATORY REPORT

TO: Ga EPD Air Program EPD Air Prot Ambient Monitoring 4244 International Pkwy Ste 120 Atlanta, GA 30354	Date Collected: 1/20/2022 Time Collected: 0:00 Sample Collector: H. STREET Chlorination: Sample Type: Received By: KL
	Date Received: 1/25/2022 Time Received: 10:43 AM Project: Reporting Date: 3/18/2022 Received Temperature: 19.7 °C
Sample ID: AK92992 Facility Name: SOUTH DEKALB QA Site ID: 013-089-0002 Location ID: Location Descr:	

ANALYTE	PARAMETER CODE	EPA NOTE	METHOD	RESULT	UNITS	QUALIFIER RL	ANALYSIS		MCL or QC Range
							ANALYST	DATE	
ETO by EPA Method TO-15 QC Batch 194730									
Bromofluorobenzene(Surrogate QC Std.)			EPA TO-15	9.0774	ppbV		KL	2/1/2022	8 to 12
Ethylene Oxide			EPA TO-15	0.0356	ppbV	SQ	0.0232	KL	2/1/2022
ETO Results by EPA Method TO-15									
Bromofluorobenzene(Surrogate QC Std.)			EPA TO-15	64.9307	ug/m3		KL	2/1/2022	57.22 to 85.84
Ethylene Oxide			EPA TO-15	0.0642	ug/m3	SQ	0.0418	KL	2/1/2022
ETO NATTS QA Replicate Precision									
Ethylene Oxide			EPA TO-15	1.13	%RPD		KL	2/2/2022	25
ETO QA Replicate Result									
Bromofluorobenzene(Surrogate QC Std.)			EPA TO-15	9.1317	ppbV		KL	2/1/2022	8 to 12
Ethylene Oxide			EPA TO-15	0.0352	ppbV	SQ		KL	2/1/2022

COMMENTS: \$ETO received in the lab at 5.6 psi. This is an ETO makeup sample for 1-11-2022.

ug/L: micrograms/liter mg/L: milligrams/liter mg/kg: milligrams/kilogram ug/kg: micrograms/kilogram ug/g: micrograms/gram ppm: parts per million ppb: parts per billion org/L: organisms/liter	<: less than MCL: Maximum Contaminant Level RL: Reporting Limit LSPC: result less than lower specification USPC: result greater than upper specification TIE: Tentatively Identified or Estimated VIOL: Violation (result exceeds MCL)	Laboratory Contacts: Lab Director: Mark Tolbert 470-524-0577 Inorganics: Carmen Pyles 470-524-0629 Metals: Shene Jones 470-524-0544 Organics: Mary Bowman 470-524-0639 GC Mass Spec: Ralph Schulz 470-524-0684 Microbiology: Mary Bowman 470-524-0709
---	--	--

**GEORGIA DEPARTMENT OF NATURAL RESOURCES
ENVIRONMENTAL PROTECTION DIVISION**

5804 Peachtree Corners East, Norcross, GA 30092-3403
(678) 248-7384

LABORATORY REPORT

TO: Ga EPD Air Program EPD Air Prot Ambient Monitoring 4244 International Pkwy Ste 120 Atlanta, GA 30354	Date Collected: 1/23/2022 Time Collected: 0:00 Sample Collector: H. STREET Canister Number: 110321 Canister Cleaned: 12/27/2021 Received By: KL
	Date Received: 1/25/2022 Time Received: 10:43 AM Project: AIR Reporting Date: 3/18/2022 Received Temperature: 19.3 °C
Sample ID: AK92994 Facility Name: SOUTH DEKALB Site ID: 013-089-0002 Location ID: Location Descr:	

ANALYTE	PARAMETER CODE	EPA NOTE	METHOD	RESULT	UNITS	QUALIFIER RL	ANALYSIS		MCL or QC Range
							ANALYST	DATE	
ETO by EPA Method TO-15 QC Batch 194683									
Bromofluorobenzene(Surrogate QC Std.)			EPA TO-15	10.6413	ppbV		KL	1/26/2022	8 to 12
Ethylene Oxide			EPA TO-15	0.0740	ppbV	0.0232	KL	1/26/2022	
ETO Results by EPA Method TO-15									
Bromofluorobenzene(Surrogate QC Std.)			EPA TO-15	76.1173	ug/m3		KL	1/26/2022	57.22 to 85.84
Ethylene Oxide			EPA TO-15	0.1334	ug/m3	0.0418	KL	1/26/2022	

COMMENTS: \$ETO received in the lab at 5.6 psi.

ug/L: micrograms/liter mg/L: milligrams/liter mg/kg: milligrams/kilogram ug/kg: micrograms/kilogram ug/g: micrograms/gram ppm: parts per million ppb: parts per billion org/L: organisms/liter	<: less than MCL: Maximum Contaminant Level RL: Reporting Limit LSPC: result less than lower specification USPC: result greater than upper specification TIE: Tentatively Identified or Estimated VIOL: Violation (result exceeds MCL)	Laboratory Contacts: Lab Director: Mark Tolbert 470-524-0577 Inorganics: Carmen Pyles 470-524-0629 Metals: Shene Jones 470-524-0544 Organics: Mary Bowman 470-524-0639 GC Mass Spec: Ralph Schulz 470-524-0684 Microbiology: Mary Bowman 470-524-0709
---	--	--

**GEORGIA DEPARTMENT OF NATURAL RESOURCES
ENVIRONMENTAL PROTECTION DIVISION**

5804 Peachtree Corners East, Norcross, GA 30092-3403
(678) 248-7384

LABORATORY REPORT

TO: Ga EPD Air Program EPD Air Prot Ambient Monitoring 4244 International Pkwy Ste 120 Atlanta, GA 30354	Date Collected: 1/20/2022 Time Collected: 0:00 Sample Collector: H. STREET Chlorination: Sample Type: Received By: KL
	Date Received: 1/25/2022 Time Received: 10:43 AM Project: Reporting Date: 3/18/2022 Received Temperature: 19.7 °C
Sample ID: AK92995 Facility Name: SOUTH DEKALB Site ID: 013-089-0002 Location ID: Location Descr:	

ANALYTE	PARAMETER CODE	EPA NOTE	METHOD	RESULT	UNITS	QUALIFIER RL	ANALYSIS		MCL or QC Range
							ANALYST	DATE	
ETO by EPA Method TO-15 QC Batch 194730									
Bromofluorobenzene(Surrogate QC Std.)			EPA TO-15	8.2866	ppbV		KL	2/1/2022	8 to 12
Ethylene Oxide			EPA TO-15	0.0329	ppbV	SQ	0.0232	KL	2/1/2022
ETO Results by EPA Method TO-15									
Bromofluorobenzene(Surrogate QC Std.)			EPA TO-15	59.2741	ug/m3		KL	2/1/2022	57.22 to 85.84
Ethylene Oxide			EPA TO-15	0.0593	ug/m3	SQ	0.0418	KL	2/1/2022

COMMENTS: \$ETO received in the lab at 5.8 psi. This is an ETO makeup sample for 1-11-2022.

ug/L: micrograms/liter
 mg/L: milligrams/liter
 mg/kg: milligrams/kilogram
 ug/kg: micrograms/kilogram
 ug/g: micrograms/gram
 ppm: parts per million
 ppb: parts per billion
 org/L: organisms/liter

<: less than
 MCL: Maximum Contaminant Level
 RL: Reporting Limit
 LSPC: result less than lower specification
 USPC: result greater than upper specification
 TIE: Tentatively Identified or Estimated
 VIOL: Violation (result exceeds MCL)

Laboratory Contacts:

Lab Director: Mark Tolbert 470-524-0577
 Inorganics: Carmen Pyles 470-524-0629
 Metals: Shene Jones 470-524-0544
 Organics: Mary Bowman 470-524-0639
 GC Mass Spec: Ralph Schulz 470-524-0684
 Microbiology: Mary Bowman 470-524-0709

**GEORGIA DEPARTMENT OF NATURAL RESOURCES
ENVIRONMENTAL PROTECTION DIVISION**

5804 Peachtree Corners East, Norcross, GA 30092-3403
(678) 248-7384

LABORATORY REPORT

TO: Ga EPD Air Program EPD Air Prot Ambient Monitoring 4244 International Pkwy Ste 120 Atlanta, GA 30354	Date Collected: 1/17/2022 Time Collected: 0:00 Sample Collector: C. CULBERT Chlorination: Sample Type: Received By: KL
	Date Received: 1/28/2022 Time Received: 8:30 AM Project: DATA STUDY Reporting Date: 3/18/2022 Received Temperature: 14.0 °C
Sample ID: AK92996 Facility Name: DOUGLAS - GENERAL COFFEE Site ID: 013-069-0002 Location ID: Location Descr:	

ANALYTE	PARAMETER CODE	EPA NOTE	METHOD	RESULT	UNITS	QUALIFIER RL	ANALYSIS		MCL or QC Range
							ANALYST	DATE	
ETO by EPA Method TO-15 QC Batch 194730									
Bromofluorobenzene(Surrogate QC Std.)			EPA TO-15	9.6154	ppbV		KL	2/1/2022	8 to 12
Ethylene Oxide			EPA TO-15	0.0223	ppbV	MD 2	0.0232	KL	2/1/2022
ETO Results by EPA Method TO-15									
Bromofluorobenzene(Surrogate QC Std.)			EPA TO-15	68.7791	ug/m3		KL	2/1/2022	57.22 to 85.84
Ethylene Oxide			EPA TO-15	0.0402	ug/m3	MD 2	0.0418	KL	2/1/2022

COMMENTS: \$ETO received in the lab at 23.6 psi. Pressure difference of >0.5 psi between receipt from field and receipt in lab.

ug/L: micrograms/liter mg/L: milligrams/liter mg/kg: milligrams/kilogram ug/kg: micrograms/kilogram ug/g: micrograms/gram ppm: parts per million ppb: parts per billion org/L: organisms/liter	<: less than MCL: Maximum Contaminant Level RL: Reporting Limit LSPC: result less than lower specification USPC: result greater than upper specification TIE: Tentatively Identified or Estimated VIOL: Violation (result exceeds MCL)	Laboratory Contacts: Lab Director: Mark Tolbert 470-524-0577 Inorganics: Carmen Pyles 470-524-0629 Metals: Shene Jones 470-524-0544 Organics: Mary Bowman 470-524-0639 GC Mass Spec: Ralph Schulz 470-524-0684 Microbiology: Mary Bowman 470-524-0709
---	--	--

**GEORGIA DEPARTMENT OF NATURAL RESOURCES
ENVIRONMENTAL PROTECTION DIVISION**

5804 Peachtree Corners East, Norcross, GA 30092-3403
(678) 248-7384

LABORATORY REPORT

TO: Ga EPD Air Program EPD Air Prot Ambient Monitoring 4244 International Pkwy Ste 120 Atlanta, GA 30354	Date Collected: 1/29/2022 Time Collected: 0:00 Sample Collector: H. STREET Canister Number: 114345 Canister Cleaned: 1/10/2022 Received By: HZ
	Date Received: 2/1/2022 Time Received: 11:06 AM Project: AIR Reporting Date: 3/18/2022 Received Temperature: 14.7 °C
Sample ID: AK93255 Facility Name: SOUTH DEKALB Site ID: 013-089-0002 Location ID: QCCAN Location Descr:	

ANALYTE	PARAMETER CODE	EPA NOTE	METHOD	RESULT	UNITS	QUALIFIER RL	ANALYSIS		MCL or QC Range
							ANALYST	DATE	
ETO by EPA Method TO-15 QC Batch 194767									
Bromofluorobenzene(Surrogate QC Std.)			EPA TO-15	9.9224	ppbV		KL	2/3/2022	8 to 12
Ethylene Oxide			EPA TO-15	0.0206	ppbV	MD	0.0232	KL	2/3/2022
ETO Results by EPA Method TO-15									
Bromofluorobenzene(Surrogate QC Std.)			EPA TO-15	70.975	ug/m3		KL	2/3/2022	57.22 to 85.84
Ethylene Oxide			EPA TO-15	0.0371	ug/m3	MD	0.0418	KL	2/3/2022

COMMENTS: \$ETO received in the lab at 5.2 psi.

ug/L: micrograms/liter
 mg/L: milligrams/liter
 mg/kg: milligrams/kilogram
 ug/kg: micrograms/kilogram
 ug/g: micrograms/gram
 ppm: parts per million
 ppb: parts per billion
 org/L: organisms/liter

<: less than
 MCL: Maximum Contaminant Level
 RL: Reporting Limit
 LSPC: result less than lower specification
 USPC: result greater than upper specification
 TIE: Tentatively Identified or Estimated
 VIOL: Violation (result exceeds MCL)

Laboratory Contacts:

Lab Director: Mark Tolbert 470-524-0577
 Inorganics: Carmen Pyles 470-524-0629
 Metals: Shene Jones 470-524-0544
 Organics: Mary Bowman 470-524-0639
 GC Mass Spec: Ralph Schulz 470-524-0684
 Microbiology: Mary Bowman 470-524-0709

**GEORGIA DEPARTMENT OF NATURAL RESOURCES
ENVIRONMENTAL PROTECTION DIVISION**

5804 Peachtree Corners East, Norcross, GA 30092-3403
(678) 248-7384

LABORATORY REPORT

TO: Ga EPD Air Program EPD Air Prot Ambient Monitoring 4244 International Pkwy Ste 120 Atlanta, GA 30354	Date Collected: 1/29/2022 Time Collected: 0:00 Sample Collector: J. BRYANT Chlorination: Sample Type: Received By: HZ
	Date Received: 2/8/2022 Time Received: 11:18 AM Project: DATA STUDY Reporting Date: 3/18/2022 Received Temperature: 23.5 °C
Sample ID: AK93264 Facility Name: FULTON F2 Site ID: F2 Location ID: Location Descr:	

ANALYTE	PARAMETER CODE	EPA NOTE	METHOD	RESULT	UNITS	QUALIFIER RL	ANALYSIS		MCL or QC Range
							ANALYST	DATE	
ETO by EPA Method TO-15 QC Batch 194894									
Bromofluorobenzene(Surrogate QC Std.)			EPA TO-15	9.6206	ppbV		KL	2/10/2022	8 to 12
Ethylene Oxide			EPA TO-15	0.2006	ppbV	0.0232	KL	2/10/2022	
ETO Results by EPA Method TO-15									
Bromofluorobenzene(Surrogate QC Std.)			EPA TO-15	68.8163	ug/m3		KL	2/10/2022	57.22 to 85.84
Ethylene Oxide			EPA TO-15	0.3616	ug/m3	0.0418	KL	2/10/2022	

COMMENTS: \$ETO received in the lab at 0 psi.

ug/L: micrograms/liter
 mg/L: milligrams/liter
 mg/kg: milligrams/kilogram
 ug/kg: micrograms/kilogram
 ug/g: micrograms/gram
 ppm: parts per million
 ppb: parts per billion
 org/L: organisms/liter

<: less than
 MCL: Maximum Contaminant Level
 RL: Reporting Limit
 LSPC: result less than lower specification
 USPC: result greater than upper specification
 TIE: Tentatively Identified or Estimated
 VIOL: Violation (result exceeds MCL)

Laboratory Contacts:

Lab Director: Mark Tolbert 470-524-0577
 Inorganics: Carmen Pyles 470-524-0629
 Metals: Shene Jones 470-524-0544
 Organics: Mary Bowman 470-524-0639
 GC Mass Spec: Ralph Schulz 470-524-0684
 Microbiology: Mary Bowman 470-524-0709

**GEORGIA DEPARTMENT OF NATURAL RESOURCES
ENVIRONMENTAL PROTECTION DIVISION**

5804 Peachtree Corners East, Norcross, GA 30092-3403
(678) 248-7384

LABORATORY REPORT

TO: Ga EPD Air Program EPD Air Prot Ambient Monitoring 4244 International Pkwy Ste 120 Atlanta, GA 30354	Date Collected: 1/28/2022 Time Collected: 0:00 Sample Collector: J. BRYANT Chlorination: Sample Type: T Received By: HZ
	Date Received: 2/8/2022 Time Received: 11:18 AM Project: DATA STUDY Reporting Date: 3/18/2022 Received Temperature: 24.6 °C
Sample ID: AK93265 Facility Name: FULTON F2 FB Site ID: F2 Location ID: Location Descr:	

ANALYTE	PARAMETER CODE	EPA NOTE	METHOD	RESULT	UNITS	QUALIFIER RL	ANALYSIS		MCL or QC Range
							ANALYST	DATE	
ETO by EPA Method TO-15 QC Batch 194894									
Bromofluorobenzene(Surrogate QC Std.)			EPA TO-15	9.8021	ppbV		KL	2/10/2022	8 to 12
Ethylene Oxide			EPA TO-15	0	ppbV	ND	0.0232	KL	2/10/2022
ETO Results by EPA Method TO-15									
Bromofluorobenzene(Surrogate QC Std.)			EPA TO-15	70.1145	ug/m3		KL	2/10/2022	57.22 to 85.84
Ethylene Oxide			EPA TO-15	0	ug/m3	ND	0.0418	KL	2/10/2022

COMMENTS: \$ETO received in the lab at 29 in Hg.

ug/L: micrograms/liter
 mg/L: milligrams/liter
 mg/kg: milligrams/kilogram
 ug/kg: micrograms/kilogram
 ug/g: micrograms/gram
 ppm: parts per million
 ppb: parts per billion
 org/L: organisms/liter

<: less than
 MCL: Maximum Contaminant Level
 RL: Reporting Limit
 LSPC: result less than lower specification
 USPC: result greater than upper specification
 TIE: Tentatively Identified or Estimated
 VIOL: Violation (result exceeds MCL)

Laboratory Contacts:

Lab Director: Mark Tolbert 470-524-0577
 Inorganics: Carmen Pyles 470-524-0629
 Metals: Shene Jones 470-524-0544
 Organics: Mary Bowman 470-524-0639
 GC Mass Spec: Ralph Schulz 470-524-0684
 Microbiology: Mary Bowman 470-524-0709

**GEORGIA DEPARTMENT OF NATURAL RESOURCES
ENVIRONMENTAL PROTECTION DIVISION**

5804 Peachtree Corners East, Norcross, GA 30092-3403
(678) 248-7384

LABORATORY REPORT

TO: Ga EPD Air Program EPD Air Prot Ambient Monitoring 4244 International Pkwy Ste 120 Atlanta, GA 30354	Date Collected: 1/28/2022 Time Collected: 0:00 Sample Collector: J. BRYANT Chlorination: Sample Type: T Received By: HZ
	Date Received: 2/8/2022 Time Received: 11:18 AM Project: DATA STUDY Reporting Date: 3/18/2022 Received Temperature: 20.3 °C
Sample ID: AK93266 Facility Name: COBB S2 FB Site ID: S2 Location ID: Location Descr:	

ANALYTE	PARAMETER CODE	EPA NOTE	METHOD	RESULT	UNITS	QUALIFIER RL	ANALYSIS		MCL or QC Range
							ANALYST	DATE	
ETO by EPA Method TO-15 QC Batch 194894									
Bromofluorobenzene(Surrogate QC Std.)			EPA TO-15	9.9345	ppbV		KL	2/10/2022	8 to 12
Ethylene Oxide			EPA TO-15	0	ppbV	ND	0.0232	KL	2/10/2022
ETO Results by EPA Method TO-15									
Bromofluorobenzene(Surrogate QC Std.)			EPA TO-15	71.0616	ug/m3		KL	2/10/2022	57.22 to 85.84
Ethylene Oxide			EPA TO-15	0	ug/m3	ND	0.0418	KL	2/10/2022

COMMENTS: \$ETO received in the lab at 29 in Hg.

ug/L: micrograms/liter
 mg/L: milligrams/liter
 mg/kg: milligrams/kilogram
 ug/kg: micrograms/kilogram
 ug/g: micrograms/gram
 ppm: parts per million
 ppb: parts per billion
 org/L: organisms/liter

<: less than
 MCL: Maximum Contaminant Level
 RL: Reporting Limit
 LSPC: result less than lower specification
 USPC: result greater than upper specification
 TIE: Tentatively Identified or Estimated
 VIOL: Violation (result exceeds MCL)

Laboratory Contacts:

Lab Director: Mark Tolbert 470-524-0577
 Inorganics: Carmen Pyles 470-524-0629
 Metals: Shene Jones 470-524-0544
 Organics: Mary Bowman 470-524-0639
 GC Mass Spec: Ralph Schulz 470-524-0684
 Microbiology: Mary Bowman 470-524-0709

**GEORGIA DEPARTMENT OF NATURAL RESOURCES
ENVIRONMENTAL PROTECTION DIVISION**

5804 Peachtree Corners East, Norcross, GA 30092-3403
(678) 248-7384

LABORATORY REPORT

TO: Ga EPD Air Program EPD Air Prot Ambient Monitoring 4244 International Pkwy Ste 120 Atlanta, GA 30354	Date Collected: 1/29/2022 Time Collected: 0:00 Sample Collector: J. BRYANT Chlorination: Sample Type: Received By: HZ
	Date Received: 2/8/2022 Time Received: 11:18 AM Project: DATA STUDY Reporting Date: 3/18/2022 Received Temperature: 24.0 °C
Sample ID: AK93267 Facility Name: COBB S2 Site ID: S2 Location ID: Location Descr:	

ANALYTE	PARAMETER CODE	EPA NOTE	METHOD	RESULT	UNITS	QUALIFIER RL	ANALYSIS		MCL or QC Range
							ANALYST	DATE	
ETO by EPA Method TO-15 QC Batch 194894									
Bromofluorobenzene(Surrogate QC Std.)			EPA TO-15	9.7235	ppbV		KL	2/10/2022	8 to 12
Ethylene Oxide			EPA TO-15	0.0225	ppbV	MD	0.0232	KL	2/10/2022
ETO Results by EPA Method TO-15									
Bromofluorobenzene(Surrogate QC Std.)			EPA TO-15	69.5523	ug/m3		KL	2/10/2022	57.22 to 85.84
Ethylene Oxide			EPA TO-15	0.0406	ug/m3	MD	0.0418	KL	2/10/2022

COMMENTS: \$ETO received in the lab at 2 in Hg.

ug/L: micrograms/liter mg/L: milligrams/liter mg/kg: milligrams/kilogram ug/kg: micrograms/kilogram ug/g: micrograms/gram ppm: parts per million ppb: parts per billion org/L: organisms/liter	<: less than MCL: Maximum Contaminant Level RL: Reporting Limit LSPC: result less than lower specification USPC: result greater than upper specification TIE: Tentatively Identified or Estimated VIOL: Violation (result exceeds MCL)	Laboratory Contacts: Lab Director: Mark Tolbert 470-524-0577 Inorganics: Carmen Pyles 470-524-0629 Metals: Shene Jones 470-524-0544 Organics: Mary Bowman 470-524-0639 GC Mass Spec: Ralph Schulz 470-524-0684 Microbiology: Mary Bowman 470-524-0709
---	--	--

**GEORGIA DEPARTMENT OF NATURAL RESOURCES
ENVIRONMENTAL PROTECTION DIVISION**

5804 Peachtree Corners East, Norcross, GA 30092-3403
(678) 248-7384

LABORATORY REPORT

TO: Ga EPD Air Program EPD Air Prot Ambient Monitoring 4244 International Pkwy Ste 120 Atlanta, GA 30354	Date Collected: 1/28/2022 Time Collected: 0:00 Sample Collector: J. BRYANT Chlorination: Sample Type: T Received By: HZ
	Date Received: 2/8/2022 Time Received: 11:18 AM Project: DATA STUDY Reporting Date: 3/18/2022 Received Temperature: 21.9 °C
Sample ID: AK93268 Facility Name: COVINGTON C2 FB Site ID: C2 Location ID: Location Descr:	

ANALYTE	PARAMETER CODE	EPA NOTE	METHOD	RESULT	UNITS	QUALIFIER RL	ANALYSIS		MCL or QC Range
							ANALYST	DATE	
ETO by EPA Method TO-15 QC Batch 194894									
Bromofluorobenzene(Surrogate QC Std.)			EPA TO-15	9.8193	ppbV		KL	2/10/2022	8 to 12
Ethylene Oxide			EPA TO-15	0	ppbV	ND	0.0232	KL	2/10/2022
ETO Results by EPA Method TO-15									
Bromofluorobenzene(Surrogate QC Std.)			EPA TO-15	70.2376	ug/m3		KL	2/10/2022	57.22 to 85.84
Ethylene Oxide			EPA TO-15	0	ug/m3	ND	0.0418	KL	2/10/2022

COMMENTS: \$ETO received in the lab at 29 in Hg.

ug/L: micrograms/liter
 mg/L: milligrams/liter
 mg/kg: milligrams/kilogram
 ug/kg: micrograms/kilogram
 ug/g: micrograms/gram
 ppm: parts per million
 ppb: parts per billion
 org/L: organisms/liter

<: less than
 MCL: Maximum Contaminant Level
 RL: Reporting Limit
 LSPC: result less than lower specification
 USPC: result greater than upper specification
 TIE: Tentatively Identified or Estimated
 VIOL: Violation (result exceeds MCL)

Laboratory Contacts:

Lab Director: Mark Tolbert 470-524-0577
 Inorganics: Carmen Pyles 470-524-0629
 Metals: Shene Jones 470-524-0544
 Organics: Mary Bowman 470-524-0639
 GC Mass Spec: Ralph Schulz 470-524-0684
 Microbiology: Mary Bowman 470-524-0709

**GEORGIA DEPARTMENT OF NATURAL RESOURCES
ENVIRONMENTAL PROTECTION DIVISION**

5804 Peachtree Corners East, Norcross, GA 30092-3403
(678) 248-7384

LABORATORY REPORT

TO: Ga EPD Air Program EPD Air Prot Ambient Monitoring 4244 International Pkwy Ste 120 Atlanta, GA 30354	Date Collected: 1/29/2022 Time Collected: 0:00 Sample Collector: J. BRYANT Chlorination: Sample Type: Received By: HZ
	Date Received: 2/8/2022 Time Received: 11:18 AM Project: DATA STUDY Reporting Date: 3/18/2022 Received Temperature: 20.1 °C
Sample ID: AK93269 Facility Name: COVINGTON C2 Site ID: C2 Location ID: Location Descr:	

ANALYTE	PARAMETER CODE	EPA NOTE	METHOD	RESULT	UNITS	QUALIFIER RL	ANALYSIS		MCL or QC Range
							ANALYST	DATE	
ETO by EPA Method TO-15 QC Batch 194894									
Bromofluorobenzene(Surrogate QC Std.)			EPA TO-15	9.6361	ppbV		KL	2/10/2022	8 to 12
Ethylene Oxide			EPA TO-15	0.0346	ppbV	SQ	0.0232	KL	2/10/2022
ETO Results by EPA Method TO-15									
Bromofluorobenzene(Surrogate QC Std.)			EPA TO-15	68.9271	ug/m3		KL	2/10/2022	57.22 to 85.84
Ethylene Oxide			EPA TO-15	0.0624	ug/m3	SQ	0.0418	KL	2/10/2022

COMMENTS: \$ETO received in the lab at 5 in Hg.

ug/L: micrograms/liter
 mg/L: milligrams/liter
 mg/kg: milligrams/kilogram
 ug/kg: micrograms/kilogram
 ug/g: micrograms/gram
 ppm: parts per million
 ppb: parts per billion
 org/L: organisms/liter

<: less than
 MCL: Maximum Contaminant Level
 RL: Reporting Limit
 LSPC: result less than lower specification
 USPC: result greater than upper specification
 TIE: Tentatively Identified or Estimated
 VIOL: Violation (result exceeds MCL)

Laboratory Contacts:

Lab Director: Mark Tolbert 470-524-0577
 Inorganics: Carmen Pyles 470-524-0629
 Metals: Shene Jones 470-524-0544
 Organics: Mary Bowman 470-524-0639
 GC Mass Spec: Ralph Schulz 470-524-0684
 Microbiology: Mary Bowman 470-524-0709

**GEORGIA DEPARTMENT OF NATURAL RESOURCES
ENVIRONMENTAL PROTECTION DIVISION**

5804 Peachtree Corners East, Norcross, GA 30092-3403
(678) 248-7384

LABORATORY REPORT

TO: Ga EPD Air Program EPD Air Prot Ambient Monitoring 4244 International Pkwy Ste 120 Atlanta, GA 30354	Date Collected: 1/29/2022 Time Collected: 0:00 Sample Collector: C. CULBERT Chlorination: Sample Type: Received By: HZ
	Date Received: 2/7/2022 Time Received: 7:59 AM Project: DATA STUDY Reporting Date: 3/18/2022 Received Temperature: 14.7 °C
Sample ID: AK93270 Facility Name: DOUGLAS - GENERAL COFFEE Site ID: 013-069-0002 Location ID: Location Descr:	

ANALYTE	PARAMETER CODE	EPA NOTE	METHOD	RESULT	UNITS	QUALIFIER RL	ANALYSIS		MCL or QC Range
							ANALYST	DATE	
ETO by EPA Method TO-15 QC Batch 194830									
Bromofluorobenzene(Surrogate QC Std.)			EPA TO-15	10.1897	ppbV		KL	2/8/2022	8 to 12
Ethylene Oxide			EPA TO-15	0.0241	ppbV	SQ	0.0232	KL	2/8/2022
ETO Results by EPA Method TO-15									
Bromofluorobenzene(Surrogate QC Std.)			EPA TO-15	72.887	ug/m3		KL	2/8/2022	57.22 to 85.84
Ethylene Oxide			EPA TO-15	0.0434	ug/m3	SQ	0.0418	KL	2/8/2022

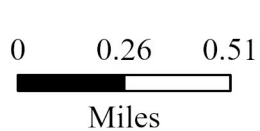
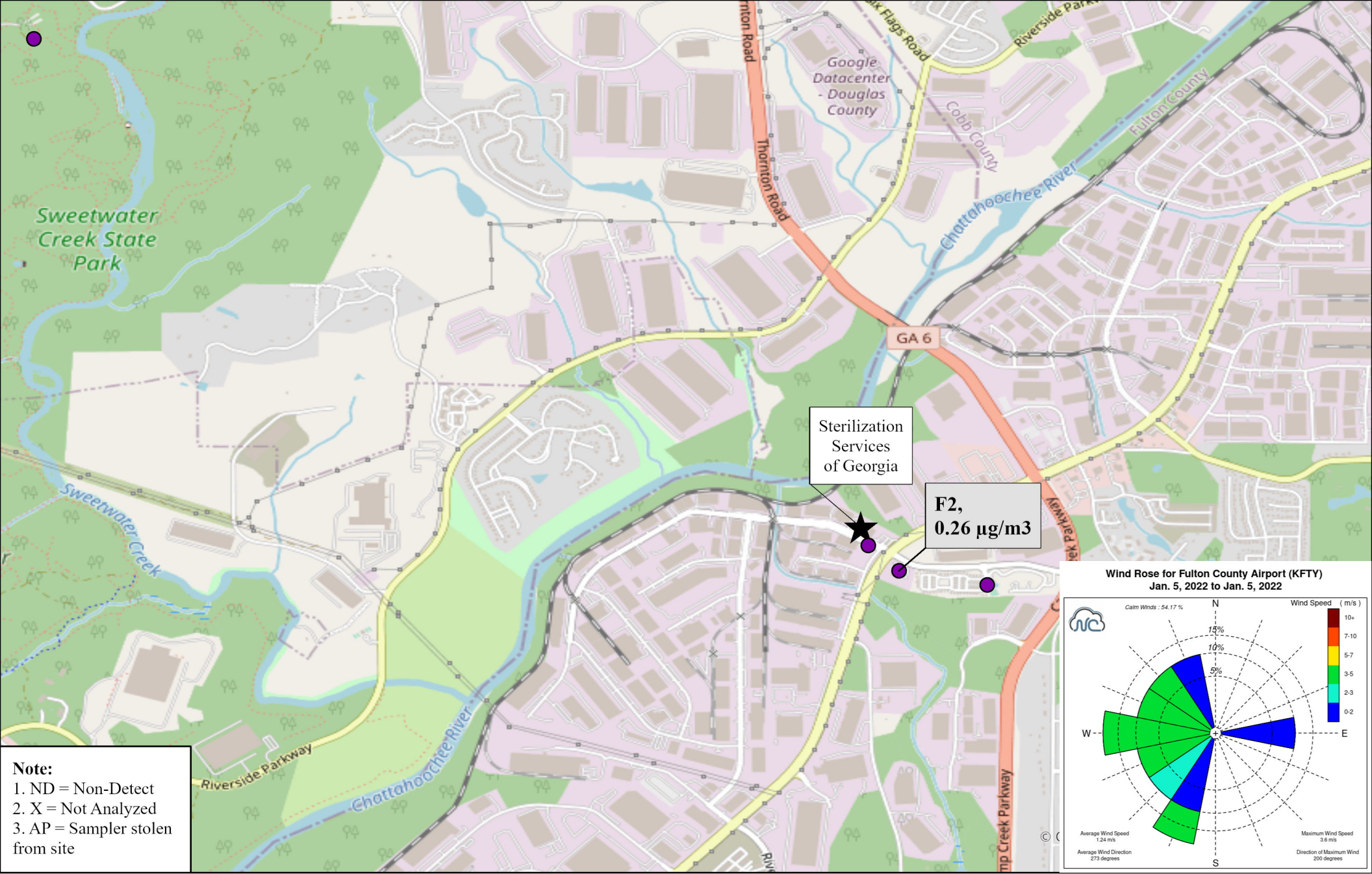
COMMENTS: \$ETO received in the lab at 24.2 psi.

ug/L: micrograms/liter
 mg/L: milligrams/liter
 mg/kg: milligrams/kilogram
 ug/kg: micrograms/kilogram
 ug/g: micrograms/gram
 ppm: parts per million
 ppb: parts per billion
 org/L: organisms/liter

<: less than
 MCL: Maximum Contaminant Level
 RL: Reporting Limit
 LSPC: result less than lower specification
 USPC: result greater than upper specification
 TIE: Tentatively Identified or Estimated
 VIOL: Violation (result exceeds MCL)

Laboratory Contacts:

Lab Director: Mark Tolbert 470-524-0577
 Inorganics: Carmen Pyles 470-524-0629
 Metals: Shene Jones 470-524-0544
 Organics: Mary Bowman 470-524-0639
 GC Mass Spec: Ralph Schulz 470-524-0684
 Microbiology: Mary Bowman 470-524-0709



Site ID, Concentration ($\mu\text{g}/\text{m}^3$)

Ethylene Oxide Sampling
 Fulton County, GA

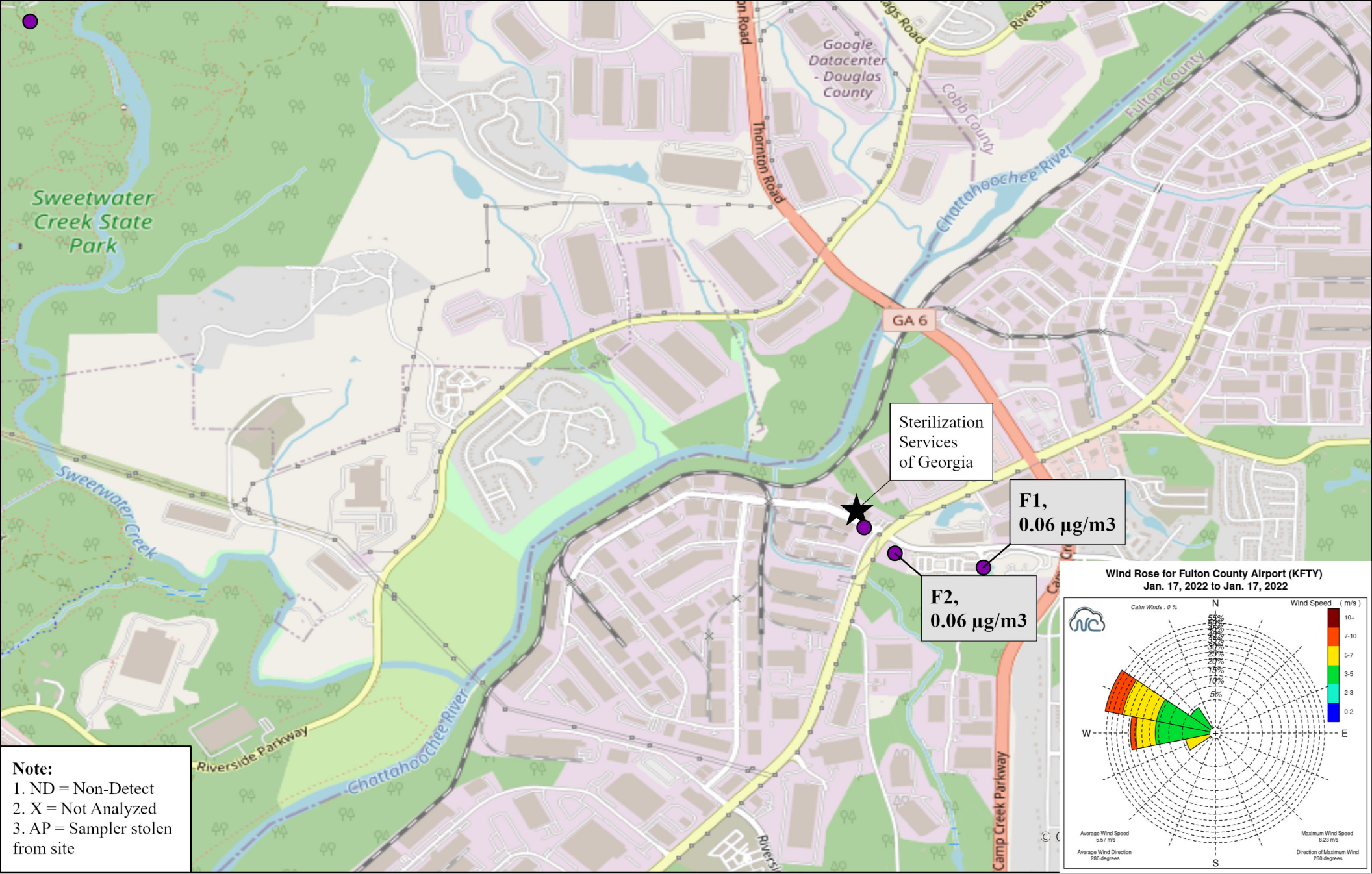
01/05/2022

Sampled By: Georgia Environmental Protection Division
 Analyzed By: Georgia Environmental Protection Division

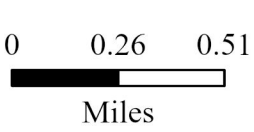
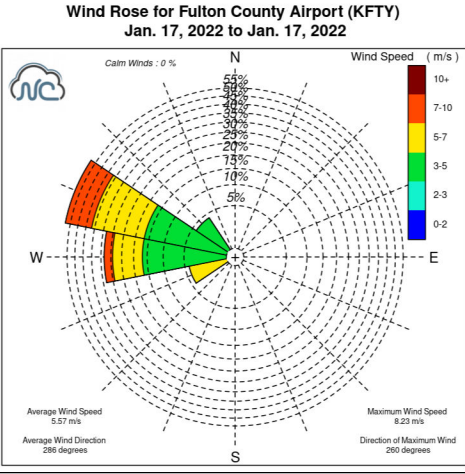


GEORGIA
 DEPARTMENT OF NATURAL RESOURCES

ENVIRONMENTAL PROTECTION DIVISION



Note:
 1. ND = Non-Detect
 2. X = Not Analyzed
 3. AP = Sampler stolen from site

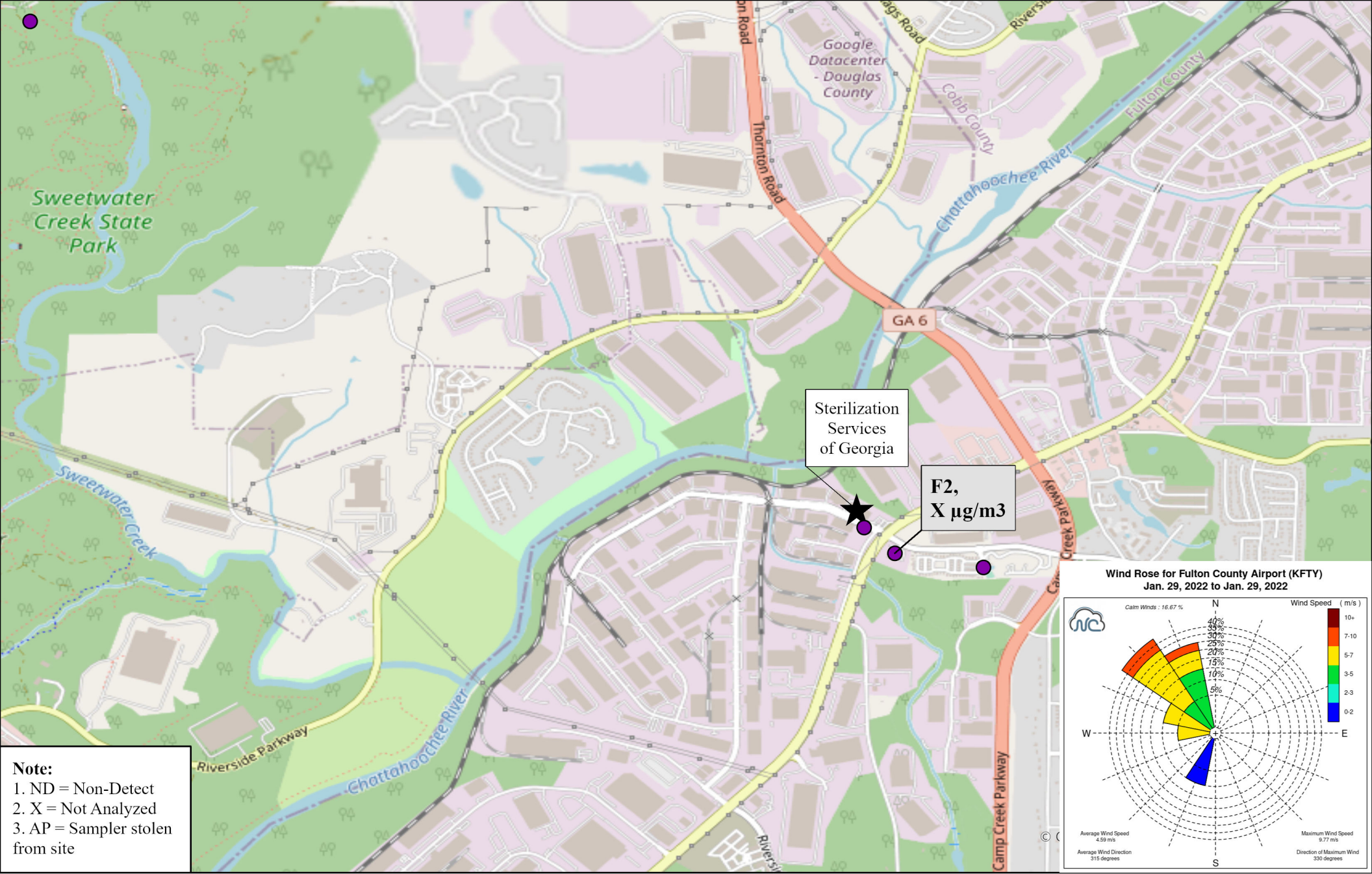


Site ID, Concentration ($\mu\text{g}/\text{m}^3$)

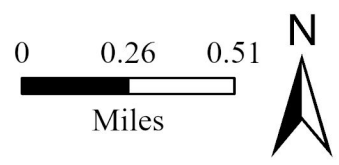
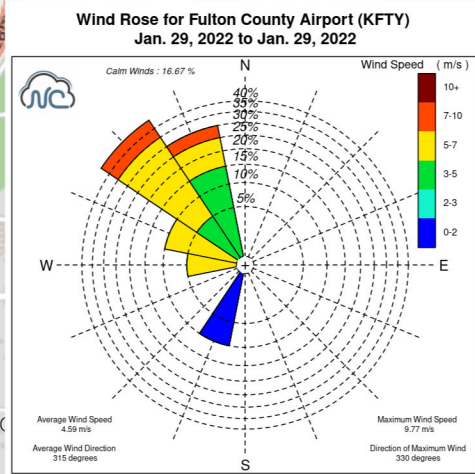
Ethylene Oxide Sampling
 Fulton County, GA

01/17/2022
 Sampled By: Georgia Environmental Protection Division
 Analyzed By: Georgia Environmental Protection Division





Note:
 1. ND = Non-Detect
 2. X = Not Analyzed
 3. AP = Sampler stolen from site

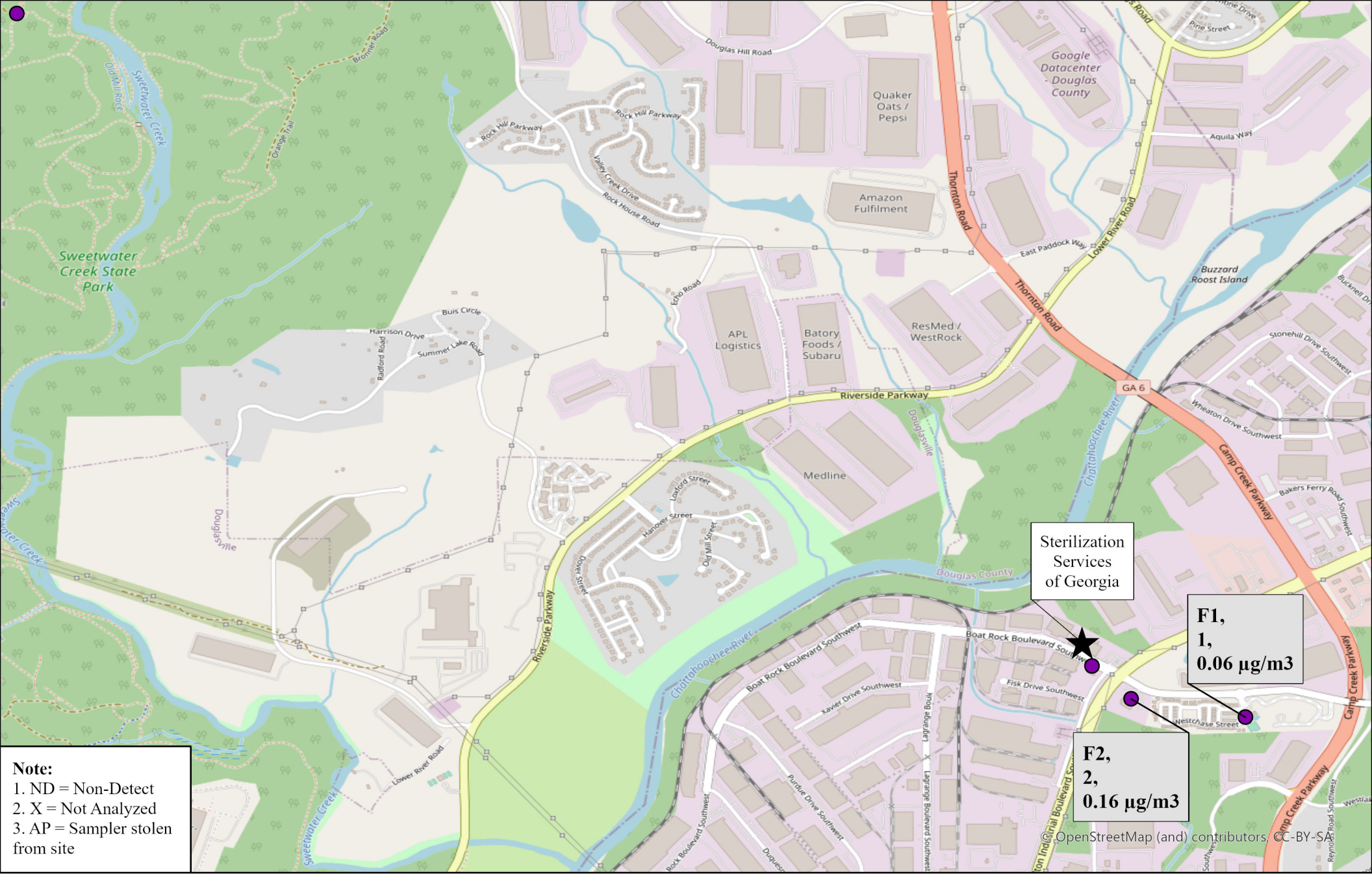


Site ID, Concentration ($\mu\text{g}/\text{m}^3$)

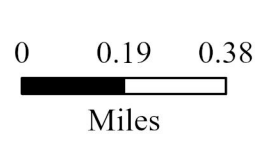
Ethylene Oxide Sampling
 Fulton County, GA

01/29/2022
 Sampled By: Georgia Environmental Protection Division
 Analyzed By: Georgia Environmental Protection Division





Note:
 1. ND = Non-Detect
 2. X = Not Analyzed
 3. AP = Sampler stolen from site



Site ID, Number of Samples, Concentration (µg/m³)

Ethylene Oxide Sampling
 Fulton County, GA

January 2022 Site Average Values
 Note: Not detectable values were included in average calculations as a value of 0.
 Sampled By: Georgia Environmental Protection Division
 Analyzed By: Georgia Environmental Protection Division

