



# GEORGIA

DEPARTMENT OF NATURAL RESOURCES

## ENVIRONMENTAL PROTECTION DIVISION

**Richard E. Dunn, Director**

**EPD Director's Office**  
 2 Martin Luther King, Jr. Drive  
 Suite 1456, East Tower  
 Atlanta, Georgia 30334  
 404-656-4713

May 3, 2023

**MEMORANDUM**

To: James Boylan, Air Branch Chief *JB*

Through: DeAnna Oser, Assistant Branch Chief

From: Jaime Gore, Operations 1 Unit Manager

RE: Fulton – July 4 – July 28, 2022, Sampling Results for Ethylene Oxide

Samples of Ethylene Oxide (EtO) were collected during the period of July 4 – July 28, 2022, by the Ambient Monitoring Program in the Fulton area to characterize the EtO concentration. Each of the samples were sent to the Georgia Environmental Protection Division Laboratory (EPD) for analysis. The Qualifier code of “2” was given to samples to indicate that the collection deviated from established procedures, but the integrity of the sample was not compromised.

Location	Date	Qualifier	EtO Concentration ( $\mu\text{g}/\text{m}^3$ )
F2	07/04/2022		0.16
F2	07/16/2022		0.26
F2	07/28/2022		0.26
F2-QA	07/04/2022		0.28
F1-SA	07/16/2022	2	0.29

If you have any questions, please let me know.

JCG

**GEORGIA DEPARTMENT OF NATURAL RESOURCES  
ENVIRONMENTAL PROTECTION DIVISION**

5804 Peachtree Corners East, Norcross, GA 30092-3403  
(678) 248-7384

**LABORATORY REPORT**

TO: Ga EPD Air Program EPD Air Prot Ambient Monitoring 4244 International Pkwy Ste 120 Atlanta, GA 30354	Date Collected: 7/4/2022 Time Collected: 0:00 Sample Collector: J. BRYANT Chlorination: Sample Type: Received By: HZ
	Date Received: 7/12/2022 Time Received: 12:07 PM Project: DATA STUDY Reporting Date: 9/26/2022 Received Temperature: 24.3 °C
Sample ID: AL03105 Facility Name: COBB S2-QA Site ID: S2-QA Location ID: QCCAN Location Descr:	

ANALYTE	PARAMETER CODE	EPA NOTE	METHOD	RESULT	UNITS	QUALIFIER RL	ANALYSIS		MCL or QC Range
							ANALYST	DATE	
<b>ETO by EPA Method TO-15 QC Batch 197573</b>									
Bromofluorobenzene(Surrogate QC Std.)			EPA TO-15	9.7554	ppbV		KL	7/14/2022	8 to 12
Ethylene Oxide			EPA TO-15	0.0830	ppbV	0.0232	KL	7/14/2022	
<b>ETO Results by EPA Method TO-15</b>									
Bromofluorobenzene(Surrogate QC Std.)			EPA TO-15	69.7805	ug/m3		KL	7/14/2022	57.22 to 85.84
Ethylene Oxide			EPA TO-15	0.1496	ug/m3	0.0418	KL	7/14/2022	

COMMENTS: \$ETO received in the lab at 6 in Hg.

ug/L: micrograms/liter  
 mg/L: milligrams/liter  
 mg/kg: milligrams/kilogram  
 ug/kg: micrograms/kilogram  
 ug/g: micrograms/gram  
 ppm: parts per million  
 ppb: parts per billion  
 org/L: organisms/liter

<: less than  
 MCL: Maximum Contaminant Level  
 RL: Reporting Limit  
 LSPC: result less than lower specification  
 USPC: result greater than upper specification  
 TIE: Tentatively Identified or Estimated  
 VIOL: Violation (result exceeds MCL)

**Laboratory Contacts:**

Lab Director: Mark Tolbert 470-524-0577  
 Inorganics: Carmen Pyles 470-524-0629  
 Metals: Shene Jones 470-524-0544  
 Organics: Mary Bowman 470-524-0639  
 GC Mass Spec: Ralph Schulz 470-524-0684  
 Microbiology: Mary Bowman 470-524-0709

**GEORGIA DEPARTMENT OF NATURAL RESOURCES  
ENVIRONMENTAL PROTECTION DIVISION**

5804 Peachtree Corners East, Norcross, GA 30092-3403  
(678) 248-7384

**LABORATORY REPORT**

TO: Ga EPD Air Program EPD Air Prot Ambient Monitoring 4244 International Pkwy Ste 120 Atlanta, GA 30354	Date Collected: 7/10/2022 Time Collected: 0:00 Sample Collector: J. BRYANT Canister Number: 111218 Canister Cleaned: 6/13/2022 Received By: HZ
	Date Received: 7/12/2022 Time Received: 12:08 PM Project: AIR Reporting Date: 9/26/2022 Received Temperature: 24.5 °C
Sample ID: AL03106 Facility Name: SOUTH DEKALB Site ID: 013-089-0002 Location ID: Location Descr:	

ANALYTE	PARAMETER CODE	EPA NOTE	METHOD	RESULT	UNITS	QUALIFIER RL	ANALYSIS		MCL or QC Range
							ANALYST	DATE	
<b>ETO by EPA Method TO-15</b>									
Bromofluorobenzene(Surrogate QC Std.)			EPA TO-15	AL	ppbV		KL	7/14/2022	8 to 12
Ethylene Oxide			EPA TO-15	AL	ppbV	0.0232	KL	7/14/2022	
<b>ETO Results by EPA Method TO-15</b>									
Bromofluorobenzene(Surrogate QC Std.)			EPA TO-15	AL	ug/m3		KL	7/14/2022	57.22 to 85.84
Ethylene Oxide			EPA TO-15	AL	ug/m3	0.0418	KL	7/14/2022	

COMMENTS: \$ETO received in the lab at 17 in Hg. VOID.

ug/L: micrograms/liter  
 mg/L: milligrams/liter  
 mg/kg: milligrams/kilogram  
 ug/kg: micrograms/kilogram  
 ug/g: micrograms/gram  
 ppm: parts per million  
 ppb: parts per billion  
 org/L: organisms/liter

<: less than  
 MCL: Maximum Contaminant Level  
 RL: Reporting Limit  
 LSPC: result less than lower specification  
 USPC: result greater than upper specification  
 TIE: Tentatively Identified or Estimated  
 VIOL: Violation (result exceeds MCL)

**Laboratory Contacts:**

Lab Director: Mark Tolbert 470-524-0577  
 Inorganics: Carmen Pyles 470-524-0629  
 Metals: Shene Jones 470-524-0544  
 Organics: Mary Bowman 470-524-0639  
 GC Mass Spec: Ralph Schulz 470-524-0684  
 Microbiology: Mary Bowman 470-524-0709

**GEORGIA DEPARTMENT OF NATURAL RESOURCES  
ENVIRONMENTAL PROTECTION DIVISION**

5804 Peachtree Corners East, Norcross, GA 30092-3403  
(678) 248-7384

**LABORATORY REPORT**

TO: Ga EPD Air Program EPD Air Prot Ambient Monitoring 4244 International Pkwy Ste 120 Atlanta, GA 30354	Date Collected: 7/4/2022 Time Collected: 0:00 Sample Collector: J. BRYANT Chlorination: Sample Type: Received By: HZ
	Date Received: 7/12/2022 Time Received: 12:08 PM Project: DATA STUDY Reporting Date: 9/26/2022 Received Temperature: 24.2 °C
Sample ID: AL03113 Facility Name: COBB S2 Site ID: S2 Location ID: QCCAN Location Descr:	

ANALYTE	PARAMETER CODE	EPA NOTE	METHOD	RESULT	UNITS	QUALIFIER RL	ANALYSIS		MCL or QC Range
							ANALYST	DATE	
<b>ETO by EPA Method TO-15 QC Batch 197573</b>									
Bromofluorobenzene(Surrogate QC Std.)			EPA TO-15	9.4743	ppbV		KL	7/14/2022	8 to 12
Ethylene Oxide			EPA TO-15	0.0847	ppbV	0.0232	KL	7/14/2022	
<b>ETO Results by EPA Method TO-15</b>									
Bromofluorobenzene(Surrogate QC Std.)			EPA TO-15	67.7698	ug/m3		KL	7/14/2022	57.22 to 85.84
Ethylene Oxide			EPA TO-15	0.1527	ug/m3	0.0418	KL	7/14/2022	

COMMENTS: \$ETO received in the lab at 6 in Hg.

ug/L: micrograms/liter  
 mg/L: milligrams/liter  
 mg/kg: milligrams/kilogram  
 ug/kg: micrograms/kilogram  
 ug/g: micrograms/gram  
 ppm: parts per million  
 ppb: parts per billion  
 org/L: organisms/liter

<: less than  
 MCL: Maximum Contaminant Level  
 RL: Reporting Limit  
 LSPC: result less than lower specification  
 USPC: result greater than upper specification  
 TIE: Tentatively Identified or Estimated  
 VIOL: Violation (result exceeds MCL)

**Laboratory Contacts:**

Lab Director: Mark Tolbert 470-524-0577  
 Inorganics: Carmen Pyles 470-524-0629  
 Metals: Shene Jones 470-524-0544  
 Organics: Mary Bowman 470-524-0639  
 GC Mass Spec: Ralph Schulz 470-524-0684  
 Microbiology: Mary Bowman 470-524-0709

**GEORGIA DEPARTMENT OF NATURAL RESOURCES  
ENVIRONMENTAL PROTECTION DIVISION**

5804 Peachtree Corners East, Norcross, GA 30092-3403  
(678) 248-7384

**LABORATORY REPORT**

TO: Ga EPD Air Program EPD Air Prot Ambient Monitoring 4244 International Pkwy Ste 120 Atlanta, GA 30354	Date Collected: 7/4/2022 Time Collected: 0:00 Sample Collector: J. BRYANT Chlorination: Sample Type: Received By: HZ Date Received: 7/12/2022 Time Received: 12:07 PM Project: DATA STUDY Reporting Date: 9/26/2022 Received Temperature: 24.0 °C
Sample ID: AL03114 Facility Name: FULTON F2 Site ID: F2 Location ID: Location Descr:	

ANALYTE	PARAMETER CODE	EPA NOTE	METHOD	RESULT	UNITS	QUALIFIER RL	ANALYSIS		MCL or QC Range
							ANALYST	DATE	
<b>ETO by EPA Method TO-15 QC Batch 197573</b>									
Bromofluorobenzene(Surrogate QC Std.)			EPA TO-15	9.6444	ppbV		KL	7/14/2022	8 to 12
Ethylene Oxide			EPA TO-15	0.0878	ppbV	0.0232	KL	7/14/2022	
<b>ETO Results by EPA Method TO-15</b>									
Bromofluorobenzene(Surrogate QC Std.)			EPA TO-15	68.9865	ug/m3		KL	7/14/2022	57.22 to 85.84
Ethylene Oxide			EPA TO-15	0.1583	ug/m3	0.0418	KL	7/14/2022	

COMMENTS: \$ETO received in the lab at 3 in Hg.

ug/L: micrograms/liter  
 mg/L: milligrams/liter  
 mg/kg: milligrams/kilogram  
 ug/kg: micrograms/kilogram  
 ug/g: micrograms/gram  
 ppm: parts per million  
 ppb: parts per billion  
 org/L: organisms/liter

<: less than  
 MCL: Maximum Contaminant Level  
 RL: Reporting Limit  
 LSPC: result less than lower specification  
 USPC: result greater than upper specification  
 TIE: Tentatively Identified or Estimated  
 VIOL: Violation (result exceeds MCL)

**Laboratory Contacts:**

Lab Director: Mark Tolbert 470-524-0577  
 Inorganics: Carmen Pyles 470-524-0629  
 Metals: Shene Jones 470-524-0544  
 Organics: Mary Bowman 470-524-0639  
 GC Mass Spec: Ralph Schulz 470-524-0684  
 Microbiology: Mary Bowman 470-524-0709

**GEORGIA DEPARTMENT OF NATURAL RESOURCES  
ENVIRONMENTAL PROTECTION DIVISION**

5804 Peachtree Corners East, Norcross, GA 30092-3403  
(678) 248-7384

**LABORATORY REPORT**

TO: Ga EPD Air Program EPD Air Prot Ambient Monitoring 4244 International Pkwy Ste 120 Atlanta, GA 30354	Date Collected: 7/4/2022 Time Collected: 0:00 Sample Collector: H. STREET Canister Number: 114394 Canister Cleaned: 6/13/2022 Received By: HZ
	Date Received: 7/7/2022 Time Received: 11:37 AM Project: AIR Reporting Date: 9/26/2022 Received Temperature: 21.9 °C
Sample ID: AL03115 Facility Name: SOUTH DEKALB Site ID: 013-089-0002 Location ID: Location Descr:	

ANALYTE	PARAMETER CODE	EPA NOTE	METHOD	RESULT	UNITS	QUALIFIER RL	ANALYSIS		MCL or QC Range
							ANALYST	DATE	
<b>ETO by EPA Method TO-15 QC Batch 197505</b>									
Bromofluorobenzene(Surrogate QC Std.)			EPA TO-15	10.3417	ppbV		KL	7/12/2022	8 to 12
Ethylene Oxide			EPA TO-15	0.1075	ppbV	0.0232	KL	7/12/2022	
<b>ETO Results by EPA Method TO-15</b>									
Bromofluorobenzene(Surrogate QC Std.)			EPA TO-15	73.9743	ug/m3		KL	7/12/2022	57.22 to 85.84
Ethylene Oxide			EPA TO-15	0.1938	ug/m3	0.0418	KL	7/12/2022	

COMMENTS: \$ETO received in the lab at 5.6 psi.

ug/L: micrograms/liter  
 mg/L: milligrams/liter  
 mg/kg: milligrams/kilogram  
 ug/kg: micrograms/kilogram  
 ug/g: micrograms/gram  
 ppm: parts per million  
 ppb: parts per billion  
 org/L: organisms/liter

<: less than  
 MCL: Maximum Contaminant Level  
 RL: Reporting Limit  
 LSPC: result less than lower specification  
 USPC: result greater than upper specification  
 TIE: Tentatively Identified or Estimated  
 VIOL: Violation (result exceeds MCL)

**Laboratory Contacts:**

Lab Director: Mark Tolbert 470-524-0577  
 Inorganics: Carmen Pyles 470-524-0629  
 Metals: Shene Jones 470-524-0544  
 Organics: Mary Bowman 470-524-0639  
 GC Mass Spec: Ralph Schulz 470-524-0684  
 Microbiology: Mary Bowman 470-524-0709

**GEORGIA DEPARTMENT OF NATURAL RESOURCES  
ENVIRONMENTAL PROTECTION DIVISION**

5804 Peachtree Corners East, Norcross, GA 30092-3403  
(678) 248-7384

**LABORATORY REPORT**

TO: Ga EPD Air Program EPD Air Prot Ambient Monitoring 4244 International Pkwy Ste 120 Atlanta, GA 30354	Date Collected: 7/4/2022 Time Collected: 0:00 Sample Collector: J. BRYANT Chlorination: Sample Type: Received By: HZ
	Date Received: 7/12/2022 Time Received: 12:08 PM Project: DATA STUDY Reporting Date: 9/26/2022 Received Temperature: 24.0 °C
Sample ID: AL03116 Facility Name: COVINGTON C2 Site ID: C2 Location ID: Location Descr:	

ANALYTE	PARAMETER CODE	EPA NOTE	METHOD	RESULT	UNITS	QUALIFIER RL	ANALYSIS		MCL or QC Range
							ANALYST	DATE	
<b>ETO by EPA Method TO-15 QC Batch 197573</b>									
Bromofluorobenzene(Surrogate QC Std.)			EPA TO-15	9.5677	ppbV		KL	7/14/2022	8 to 12
Ethylene Oxide			EPA TO-15	0.1319	ppbV	0.0232	KL	7/14/2022	
<b>ETO Results by EPA Method TO-15</b>									
Bromofluorobenzene(Surrogate QC Std.)			EPA TO-15	68.4379	ug/m3		KL	7/14/2022	57.22 to 85.84
Ethylene Oxide			EPA TO-15	0.2378	ug/m3	0.0418	KL	7/14/2022	

COMMENTS: \$ETO received in the lab at 6 in Hg.

ug/L: micrograms/liter mg/L: milligrams/liter mg/kg: milligrams/kilogram ug/kg: micrograms/kilogram ug/g: micrograms/gram ppm: parts per million ppb: parts per billion org/L: organisms/liter	<: less than MCL: Maximum Contaminant Level RL: Reporting Limit LSPC: result less than lower specification USPC: result greater than upper specification TIE: Tentatively Identified or Estimated VIOL: Violation (result exceeds MCL)	<b>Laboratory Contacts:</b> Lab Director: Mark Tolbert 470-524-0577 Inorganics: Carmen Pyles 470-524-0629 Metals: Shene Jones 470-524-0544 Organics: Mary Bowman 470-524-0639 GC Mass Spec: Ralph Schulz 470-524-0684 Microbiology: Mary Bowman 470-524-0709
---	--	--

**GEORGIA DEPARTMENT OF NATURAL RESOURCES  
ENVIRONMENTAL PROTECTION DIVISION**

5804 Peachtree Corners East, Norcross, GA 30092-3403  
(678) 248-7384

**LABORATORY REPORT**

TO: Ga EPD Air Program EPD Air Prot Ambient Monitoring 4244 International Pkwy Ste 120 Atlanta, GA 30354	Date Collected: 7/4/2022 Time Collected: 0:00 Sample Collector: J. BRYANT Chlorination: Sample Type: Received By: HZ
	Date Received: 7/12/2022 Time Received: 12:08 PM Project: DATA STUDY Reporting Date: 9/26/2022 Received Temperature: 24.3 °C
Sample ID: AL03117 Facility Name: FULTON F2-QA Site ID: F2-QA Location ID: Location Descr:	

ANALYTE	PARAMETER CODE	EPA NOTE	METHOD	RESULT	UNITS	QUALIFIER RL	ANALYSIS		MCL or QC Range
							ANALYST	DATE	
<b>ETO by EPA Method TO-15 QC Batch 197573</b>									
Bromofluorobenzene(Surrogate QC Std.)			EPA TO-15	9.6230	ppbV		KL	7/14/2022	8 to 12
Ethylene Oxide			EPA TO-15	0.1557	ppbV	0.0232	KL	7/14/2022	
<b>ETO Results by EPA Method TO-15</b>									
Bromofluorobenzene(Surrogate QC Std.)			EPA TO-15	68.8334	ug/m3		KL	7/14/2022	57.22 to 85.84
Ethylene Oxide			EPA TO-15	0.2807	ug/m3	0.0418	KL	7/14/2022	

COMMENTS: \$ETO received in the lab at 5 in Hg.

ug/L: micrograms/liter  
 mg/L: milligrams/liter  
 mg/kg: milligrams/kilogram  
 ug/kg: micrograms/kilogram  
 ug/g: micrograms/gram  
 ppm: parts per million  
 ppb: parts per billion  
 org/L: organisms/liter

<: less than  
 MCL: Maximum Contaminant Level  
 RL: Reporting Limit  
 LSPC: result less than lower specification  
 USPC: result greater than upper specification  
 TIE: Tentatively Identified or Estimated  
 VIOL: Violation (result exceeds MCL)

**Laboratory Contacts:**

Lab Director: Mark Tolbert 470-524-0577  
 Inorganics: Carmen Pyles 470-524-0629  
 Metals: Shene Jones 470-524-0544  
 Organics: Mary Bowman 470-524-0639  
 GC Mass Spec: Ralph Schulz 470-524-0684  
 Microbiology: Mary Bowman 470-524-0709



**GEORGIA DEPARTMENT OF NATURAL RESOURCES  
ENVIRONMENTAL PROTECTION DIVISION**

5804 Peachtree Corners East, Norcross, GA 30092-3403  
(678) 248-7384

**LABORATORY REPORT**

TO: Ga EPD Air Program EPD Air Prot Ambient Monitoring 4244 International Pkwy Ste 120 Atlanta, GA 30354	Date Collected: 7/4/2022 Time Collected: 0:00 Sample Collector: J. BRYANT Chlorination: Sample Type: Received By: HZ
	Date Received: 7/12/2022 Time Received: 12:07 PM Project: DATA STUDY Reporting Date: 9/26/2022 Received Temperature: 24.5 °C
Sample ID: AL03118 Facility Name: COVINGTON C2-QA Site ID: C2-QA Location ID: Location Descr:	

ANALYTE	PARAMETER CODE	EPA NOTE	METHOD	RESULT	UNITS	QUALIFIER RL	ANALYSIS		MCL or QC Range
							ANALYST	DATE	
<b>ETO by EPA Method TO-15 QC Batch 197573</b>									
Bromofluorobenzene(Surrogate QC Std.)			EPA TO-15	9.6156	ppbV		KL	7/14/2022	8 to 12
Ethylene Oxide			EPA TO-15	0.1153	ppbV	0.0232	KL	7/14/2022	
<b>ETO Results by EPA Method TO-15</b>									
Bromofluorobenzene(Surrogate QC Std.)			EPA TO-15	68.7805	ug/m3		KL	7/14/2022	57.22 to 85.84
Ethylene Oxide			EPA TO-15	0.2078	ug/m3	0.0418	KL	7/14/2022	

COMMENTS: \$ETO received in the lab at 5 in Hg.

ug/L: micrograms/liter  
 mg/L: milligrams/liter  
 mg/kg: milligrams/kilogram  
 ug/kg: micrograms/kilogram  
 ug/g: micrograms/gram  
 ppm: parts per million  
 ppb: parts per billion  
 org/L: organisms/liter

<: less than  
 MCL: Maximum Contaminant Level  
 RL: Reporting Limit  
 LSPC: result less than lower specification  
 USPC: result greater than upper specification  
 TIE: Tentatively Identified or Estimated  
 VIOL: Violation (result exceeds MCL)

**Laboratory Contacts:**

Lab Director: Mark Tolbert 470-524-0577  
 Inorganics: Carmen Pyles 470-524-0629  
 Metals: Shene Jones 470-524-0544  
 Organics: Mary Bowman 470-524-0639  
 GC Mass Spec: Ralph Schulz 470-524-0684  
 Microbiology: Mary Bowman 470-524-0709

**GEORGIA DEPARTMENT OF NATURAL RESOURCES  
ENVIRONMENTAL PROTECTION DIVISION**

5804 Peachtree Corners East, Norcross, GA 30092-3403  
(678) 248-7384

**LABORATORY REPORT**

TO: Ga EPD Air Program EPD Air Prot Ambient Monitoring 4244 International Pkwy Ste 120 Atlanta, GA 30354	Date Collected: 7/10/2022 Time Collected: 0:00 Sample Collector: J. BRYANT Canister Number: 110349 Canister Cleaned: 6/13/2022 Received By: HZ
	Date Received: 7/12/2022 Time Received: 12:08 PM Project: AIR Reporting Date: 9/26/2022 Received Temperature: 24.1 °C
Sample ID: AL03119 Facility Name: SOUTH DEKALB QA Site ID: 013-089-0002 Location ID: Location Descr:	

ANALYTE	PARAMETER CODE	EPA NOTE	METHOD	RESULT	UNITS	QUALIFIER RL	ANALYSIS		MCL or QC Range
							ANALYST	DATE	
<b>ETO by EPA Method TO-15 QC Batch 197573</b>									
Bromofluorobenzene(Surrogate QC Std.)			EPA TO-15	9.4101	ppbV		KL	7/14/2022	8 to 12
Ethylene Oxide			EPA TO-15	0.1074	ppbV	0.0232	KL	7/14/2022	
<b>ETO Results by EPA Method TO-15</b>									
Bromofluorobenzene(Surrogate QC Std.)			EPA TO-15	67.3106	ug/m3		KL	7/14/2022	57.22 to 85.84
Ethylene Oxide			EPA TO-15	0.1936	ug/m3	0.0418	KL	7/14/2022	

COMMENTS: \$ETO received in the lab at 4.4 psi.

ug/L: micrograms/liter  
 mg/L: milligrams/liter  
 mg/kg: milligrams/kilogram  
 ug/kg: micrograms/kilogram  
 ug/g: micrograms/gram  
 ppm: parts per million  
 ppb: parts per billion  
 org/L: organisms/liter

<: less than  
 MCL: Maximum Contaminant Level  
 RL: Reporting Limit  
 LSPC: result less than lower specification  
 USPC: result greater than upper specification  
 TIE: Tentatively Identified or Estimated  
 VIOL: Violation (result exceeds MCL)

**Laboratory Contacts:**

Lab Director: Mark Tolbert 470-524-0577  
 Inorganics: Carmen Pyles 470-524-0629  
 Metals: Shene Jones 470-524-0544  
 Organics: Mary Bowman 470-524-0639  
 GC Mass Spec: Ralph Schulz 470-524-0684  
 Microbiology: Mary Bowman 470-524-0709

**GEORGIA DEPARTMENT OF NATURAL RESOURCES  
ENVIRONMENTAL PROTECTION DIVISION**

5804 Peachtree Corners East, Norcross, GA 30092-3403  
(678) 248-7384

**LABORATORY REPORT**

TO: Ga EPD Air Program EPD Air Prot Ambient Monitoring 4244 International Pkwy Ste 120 Atlanta, GA 30354	Date Collected: 7/4/2022 Time Collected: 0:00 Sample Collector: C. KNOX Chlorination: Sample Type: Received By: HZ
	Date Received: 7/8/2022 Time Received: 12:43 PM Project: DATA STUDY Reporting Date: 9/26/2022 Received Temperature: 21.6 °C
Sample ID: AL03120 Facility Name: General Coffee Site ID: 013-069-0002 Location ID: Location Descr:	

ANALYTE	PARAMETER CODE	EPA NOTE	METHOD	RESULT	UNITS	QUALIFIER RL	ANALYSIS		MCL or QC Range
							ANALYST	DATE	
<b>ETO by EPA Method TO-15 QC Batch 197505</b>									
Bromofluorobenzene(Surrogate QC Std.)			EPA TO-15	10.3221	ppbV		KL	7/12/2022	8 to 12
Ethylene Oxide			EPA TO-15	0.0458	ppbV	SQ 2	0.0232	KL	7/12/2022
<b>ETO Results by EPA Method TO-15</b>									
Bromofluorobenzene(Surrogate QC Std.)			EPA TO-15	73.8341	ug/m3		KL	7/12/2022	57.22 to 85.84
Ethylene Oxide			EPA TO-15	0.0826	ug/m3	SQ 2	0.0418	KL	7/12/2022

COMMENTS: \$ETO received in the lab at 20 psi. Pressure difference of >0.5 psi between receipt from field and receipt in lab.

ug/L: micrograms/liter mg/L: milligrams/liter mg/kg: milligrams/kilogram ug/kg: micrograms/kilogram ug/g: micrograms/gram ppm: parts per million ppb: parts per billion org/L: organisms/liter	<: less than MCL: Maximum Contaminant Level RL: Reporting Limit LSPC: result less than lower specification USPC: result greater than upper specification TIE: Tentatively Identified or Estimated VIOL: Violation (result exceeds MCL)	<b>Laboratory Contacts:</b> Lab Director: Mark Tolbert 470-524-0577 Inorganics: Carmen Pyles 470-524-0629 Metals: Shene Jones 470-524-0544 Organics: Mary Bowman 470-524-0639 GC Mass Spec: Ralph Schulz 470-524-0684 Microbiology: Mary Bowman 470-524-0709
---	--	--

**GEORGIA DEPARTMENT OF NATURAL RESOURCES  
ENVIRONMENTAL PROTECTION DIVISION**

5804 Peachtree Corners East, Norcross, GA 30092-3403  
(678) 248-7384

**LABORATORY REPORT**

TO: Ga EPD Air Program EPD Air Prot Ambient Monitoring 4244 International Pkwy Ste 120 Atlanta, GA 30354	Date Collected: 7/16/2022 Time Collected: 0:00 Sample Collector: C. KNOX Chlorination: Sample Type: Received By: HZ
	Date Received: 7/25/2022 Time Received: 10:28 AM Project: DATA STUDY Reporting Date: 9/26/2022 Received Temperature: 21.6 °C
Sample ID: AL04051 Facility Name: GENERAL COFFEE Site ID: 013-069-0002 Location ID: Location Descr:	

ANALYTE	PARAMETER CODE	EPA NOTE	METHOD	RESULT	UNITS	QUALIFIER RL	ANALYSIS		MCL or QC Range
							ANALYST	DATE	
<b>ETO by EPA Method TO-15 QC Batch 197793</b>									
Bromofluorobenzene(Surrogate QC Std.)			EPA TO-15	9.0574	ppbV		KL	7/26/2022	8 to 12
Ethylene Oxide			EPA TO-15	0.0463	ppbV	SQ 2	0.0232	KL	7/26/2022
<b>ETO Results by EPA Method TO-15</b>									
Bromofluorobenzene(Surrogate QC Std.)			EPA TO-15	64.7877	ug/m3		KL	7/26/2022	57.22 to 85.84
Ethylene Oxide			EPA TO-15	0.0835	ug/m3	SQ 2	0.0418	KL	7/26/2022

COMMENTS: \$ETO received in the lab at 20 psi. Pressure difference of >0.5 psi between receipt from field and receipt in lab.

ug/L: micrograms/liter mg/L: milligrams/liter mg/kg: milligrams/kilogram ug/kg: micrograms/kilogram ug/g: micrograms/gram ppm: parts per million ppb: parts per billion org/L: organisms/liter	<: less than MCL: Maximum Contaminant Level RL: Reporting Limit LSPC: result less than lower specification USPC: result greater than upper specification TIE: Tentatively Identified or Estimated VIOL: Violation (result exceeds MCL)	<b>Laboratory Contacts:</b> Lab Director: Mark Tolbert 470-524-0577 Inorganics: Carmen Pyles 470-524-0629 Metals: Shene Jones 470-524-0544 Organics: Mary Bowman 470-524-0639 GC Mass Spec: Ralph Schulz 470-524-0684 Microbiology: Mary Bowman 470-524-0709
---	--	--

**GEORGIA DEPARTMENT OF NATURAL RESOURCES  
ENVIRONMENTAL PROTECTION DIVISION**

5804 Peachtree Corners East, Norcross, GA 30092-3403  
(678) 248-7384

**LABORATORY REPORT**

TO: Ga EPD Air Program EPD Air Prot Ambient Monitoring 4244 International Pkwy Ste 120 Atlanta, GA 30354	Date Collected: 7/16/2022 Time Collected: 0:00 Sample Collector: J. BRYANT Chlorination: Sample Type: Received By: HZ
	Date Received: 8/1/2022 Time Received: 11:12 AM Project: DATA STUDY Reporting Date: 9/26/2022 Received Temperature: 19.8 °C
Sample ID: AL04052 Facility Name: COBB S2 Site ID: S2 Location ID: Location Descr:	

ANALYTE	PARAMETER CODE	EPA NOTE	METHOD	RESULT	UNITS	QUALIFIER RL	ANALYSIS		MCL or QC Range
							ANALYST	DATE	
<b>ETO by EPA Method TO-15 QC Batch 197922</b>									
Bromofluorobenzene(Surrogate QC Std.)			EPA TO-15	9.2424	ppbV		KL	8/2/2022	8 to 12
Ethylene Oxide			EPA TO-15	0.0447	ppbV	SQ	0.0232	KL	8/2/2022
<b>ETO Results by EPA Method TO-15</b>									
Bromofluorobenzene(Surrogate QC Std.)			EPA TO-15	66.111	ug/m3		KL	8/2/2022	57.22 to 85.84
Ethylene Oxide			EPA TO-15	0.0806	ug/m3	SQ	0.0418	KL	8/2/2022

COMMENTS: \$ETO received in the lab at 7 in Hg.

ug/L: micrograms/liter  
 mg/L: milligrams/liter  
 mg/kg: milligrams/kilogram  
 ug/kg: micrograms/kilogram  
 ug/g: micrograms/gram  
 ppm: parts per million  
 ppb: parts per billion  
 org/L: organisms/liter

<: less than  
 MCL: Maximum Contaminant Level  
 RL: Reporting Limit  
 LSPC: result less than lower specification  
 USPC: result greater than upper specification  
 TIE: Tentatively Identified or Estimated  
 VIOL: Violation (result exceeds MCL)

**Laboratory Contacts:**

Lab Director: Mark Tolbert 470-524-0577  
 Inorganics: Carmen Pyles 470-524-0629  
 Metals: Shene Jones 470-524-0544  
 Organics: Mary Bowman 470-524-0639  
 GC Mass Spec: Ralph Schulz 470-524-0684  
 Microbiology: Mary Bowman 470-524-0709

**GEORGIA DEPARTMENT OF NATURAL RESOURCES  
ENVIRONMENTAL PROTECTION DIVISION**

5804 Peachtree Corners East, Norcross, GA 30092-3403  
(678) 248-7384

**LABORATORY REPORT**

TO: Ga EPD Air Program EPD Air Prot Ambient Monitoring 4244 International Pkwy Ste 120 Atlanta, GA 30354	Date Collected: 7/16/2022 Time Collected: 0:00 Sample Collector: J. BRYANT Chlorination: Sample Type: Received By: HZ
	Date Received: 8/1/2022 Time Received: 11:12 AM Project: DATA STUDY Reporting Date: 9/26/2022 Received Temperature: 25.1 °C
Sample ID: AL04053 Facility Name: COBB S6-SA Site ID: S6-SA Location ID: Location Descr:	

ANALYTE	PARAMETER CODE	EPA NOTE	METHOD	RESULT	UNITS	QUALIFIER RL	ANALYSIS		MCL or QC Range
							ANALYST	DATE	
<b>ETO by EPA Method TO-15 QC Batch 197922</b>									
Bromofluorobenzene(Surrogate QC Std.)			EPA TO-15	9.1904	ppbV		KL	8/2/2022	8 to 12
Ethylene Oxide			EPA TO-15	0.0762	ppbV	0.0232	KL	8/2/2022	
<b>ETO Results by EPA Method TO-15</b>									
Bromofluorobenzene(Surrogate QC Std.)			EPA TO-15	65.739	ug/m3		KL	8/2/2022	57.22 to 85.84
Ethylene Oxide			EPA TO-15	0.1374	ug/m3	0.0418	KL	8/2/2022	

COMMENTS: \$ETO received in the lab at 6.5 in Hg.

ug/L: micrograms/liter  
 mg/L: milligrams/liter  
 mg/kg: milligrams/kilogram  
 ug/kg: micrograms/kilogram  
 ug/g: micrograms/gram  
 ppm: parts per million  
 ppb: parts per billion  
 org/L: organisms/liter

<: less than  
 MCL: Maximum Contaminant Level  
 RL: Reporting Limit  
 LSPC: result less than lower specification  
 USPC: result greater than upper specification  
 TIE: Tentatively Identified or Estimated  
 VIOL: Violation (result exceeds MCL)

**Laboratory Contacts:**

Lab Director: Mark Tolbert 470-524-0577  
 Inorganics: Carmen Pyles 470-524-0629  
 Metals: Shene Jones 470-524-0544  
 Organics: Mary Bowman 470-524-0639  
 GC Mass Spec: Ralph Schulz 470-524-0684  
 Microbiology: Mary Bowman 470-524-0709

**GEORGIA DEPARTMENT OF NATURAL RESOURCES  
ENVIRONMENTAL PROTECTION DIVISION**

5804 Peachtree Corners East, Norcross, GA 30092-3403  
(678) 248-7384

**LABORATORY REPORT**

TO: Ga EPD Air Program EPD Air Prot Ambient Monitoring 4244 International Pkwy Ste 120 Atlanta, GA 30354	Date Collected: 7/16/2022 Time Collected: 0:00 Sample Collector: J. BRYANT Chlorination: Sample Type: Received By: HZ
	Date Received: 8/1/2022 Time Received: 11:12 AM Project: DATA STUDY Reporting Date: 9/26/2022 Received Temperature: 20.5 °C
Sample ID: AL04054 Facility Name: FULTON F2 Site ID: F2 Location ID: Location Descr:	

ANALYTE	PARAMETER CODE	EPA NOTE	METHOD	RESULT	UNITS	QUALIFIER RL	ANALYSIS		MCL or QC Range
							ANALYST	DATE	
<b>ETO by EPA Method TO-15 QC Batch 197922</b>									
Bromofluorobenzene(Surrogate QC Std.)			EPA TO-15	9.4189	ppbV		KL	8/2/2022	8 to 12
Ethylene Oxide			EPA TO-15	0.1440	ppbV	0.0232	KL	8/2/2022	
<b>ETO Results by EPA Method TO-15</b>									
Bromofluorobenzene(Surrogate QC Std.)			EPA TO-15	67.3735	ug/m3		KL	8/2/2022	57.22 to 85.84
Ethylene Oxide			EPA TO-15	0.2596	ug/m3	0.0418	KL	8/2/2022	

COMMENTS: \$ETO received in the lab at 7 in Hg.

ug/L: micrograms/liter  
 mg/L: milligrams/liter  
 mg/kg: milligrams/kilogram  
 ug/kg: micrograms/kilogram  
 ug/g: micrograms/gram  
 ppm: parts per million  
 ppb: parts per billion  
 org/L: organisms/liter

<: less than  
 MCL: Maximum Contaminant Level  
 RL: Reporting Limit  
 LSPC: result less than lower specification  
 USPC: result greater than upper specification  
 TIE: Tentatively Identified or Estimated  
 VIOL: Violation (result exceeds MCL)

**Laboratory Contacts:**

Lab Director: Mark Tolbert 470-524-0577  
 Inorganics: Carmen Pyles 470-524-0629  
 Metals: Shene Jones 470-524-0544  
 Organics: Mary Bowman 470-524-0639  
 GC Mass Spec: Ralph Schulz 470-524-0684  
 Microbiology: Mary Bowman 470-524-0709

**GEORGIA DEPARTMENT OF NATURAL RESOURCES  
ENVIRONMENTAL PROTECTION DIVISION**

5804 Peachtree Corners East, Norcross, GA 30092-3403  
(678) 248-7384

**LABORATORY REPORT**

TO: Ga EPD Air Program EPD Air Prot Ambient Monitoring 4244 International Pkwy Ste 120 Atlanta, GA 30354	Date Collected: 7/16/2022 Time Collected: 0:00 Sample Collector: J. BRYANT Chlorination: Sample Type: Received By: HZ
	Date Received: 8/1/2022 Time Received: 11:12 AM Project: DATA STUDY Reporting Date: 9/26/2022 Received Temperature: 23.4 °C
Sample ID: AL04055 Facility Name: COVINGTON C2 Site ID: C2 Location ID: Location Descr:	

ANALYTE	PARAMETER CODE	EPA NOTE	METHOD	RESULT	UNITS	QUALIFIER RL	ANALYSIS		MCL or QC Range
							ANALYST	DATE	
<b>ETO by EPA Method TO-15 QC Batch 197922</b>									
Bromofluorobenzene(Surrogate QC Std.)			EPA TO-15	9.3091	ppbV		KL	8/2/2022	8 to 12
Ethylene Oxide			EPA TO-15	0.0950	ppbV	0.0232	KL	8/2/2022	
<b>ETO Results by EPA Method TO-15</b>									
Bromofluorobenzene(Surrogate QC Std.)			EPA TO-15	66.5881	ug/m3		KL	8/2/2022	57.22 to 85.84
Ethylene Oxide			EPA TO-15	0.1712	ug/m3	0.0418	KL	8/2/2022	

COMMENTS: \$ETO received in the lab at 4.5 in Hg.

ug/L: micrograms/liter  
 mg/L: milligrams/liter  
 mg/kg: milligrams/kilogram  
 ug/kg: micrograms/kilogram  
 ug/g: micrograms/gram  
 ppm: parts per million  
 ppb: parts per billion  
 org/L: organisms/liter

<: less than  
 MCL: Maximum Contaminant Level  
 RL: Reporting Limit  
 LSPC: result less than lower specification  
 USPC: result greater than upper specification  
 TIE: Tentatively Identified or Estimated  
 VIOL: Violation (result exceeds MCL)

**Laboratory Contacts:**

Lab Director: Mark Tolbert 470-524-0577  
 Inorganics: Carmen Pyles 470-524-0629  
 Metals: Shene Jones 470-524-0544  
 Organics: Mary Bowman 470-524-0639  
 GC Mass Spec: Ralph Schulz 470-524-0684  
 Microbiology: Mary Bowman 470-524-0709



**GEORGIA DEPARTMENT OF NATURAL RESOURCES  
ENVIRONMENTAL PROTECTION DIVISION**

5804 Peachtree Corners East, Norcross, GA 30092-3403  
(678) 248-7384

**LABORATORY REPORT**

TO: Ga EPD Air Program EPD Air Prot Ambient Monitoring 4244 International Pkwy Ste 120 Atlanta, GA 30354	Date Collected: 7/16/2022 Time Collected: 0:00 Sample Collector: J. BRYANT Chlorination: Sample Type: Received By: HZ
	Date Received: 8/1/2022 Time Received: 11:13 AM Project: DATA STUDY Reporting Date: 9/26/2022 Received Temperature: 21.5 °C
Sample ID: AL04056 Facility Name: COBB S7-SA Site ID: S7-SA Location ID: Location Descr:	

ANALYTE	PARAMETER CODE	EPA NOTE	METHOD	RESULT	UNITS	QUALIFIER RL	ANALYSIS		MCL or QC Range
							ANALYST	DATE	
<b>ETO by EPA Method TO-15 QC Batch 197922</b>									
Bromofluorobenzene(Surrogate QC Std.)			EPA TO-15	9.2823	ppbV		KL	8/2/2022	8 to 12
Ethylene Oxide			EPA TO-15	0.1181	ppbV	0.0232	KL	8/2/2022	
<b>ETO Results by EPA Method TO-15</b>									
Bromofluorobenzene(Surrogate QC Std.)			EPA TO-15	66.3964	ug/m3		KL	8/2/2022	57.22 to 85.84
Ethylene Oxide			EPA TO-15	0.2129	ug/m3	0.0418	KL	8/2/2022	

COMMENTS: \$ETO received in the lab at 6.5 in Hg.

ug/L: micrograms/liter  
 mg/L: milligrams/liter  
 mg/kg: milligrams/kilogram  
 ug/kg: micrograms/kilogram  
 ug/g: micrograms/gram  
 ppm: parts per million  
 ppb: parts per billion  
 org/L: organisms/liter

<: less than  
 MCL: Maximum Contaminant Level  
 RL: Reporting Limit  
 LSPC: result less than lower specification  
 USPC: result greater than upper specification  
 TIE: Tentatively Identified or Estimated  
 VIOL: Violation (result exceeds MCL)

**Laboratory Contacts:**

Lab Director: Mark Tolbert 470-524-0577  
 Inorganics: Carmen Pyles 470-524-0629  
 Metals: Shene Jones 470-524-0544  
 Organics: Mary Bowman 470-524-0639  
 GC Mass Spec: Ralph Schulz 470-524-0684  
 Microbiology: Mary Bowman 470-524-0709

**GEORGIA DEPARTMENT OF NATURAL RESOURCES  
ENVIRONMENTAL PROTECTION DIVISION**

5804 Peachtree Corners East, Norcross, GA 30092-3403  
(678) 248-7384

**LABORATORY REPORT**

TO: Ga EPD Air Program EPD Air Prot Ambient Monitoring 4244 International Pkwy Ste 120 Atlanta, GA 30354	Date Collected: 7/16/2022 Time Collected: 0:00 Sample Collector: J. BRYANT Chlorination: Sample Type: Received By: HZ
	Date Received: 8/1/2022 Time Received: 11:13 AM Project: DATA STUDY Reporting Date: 9/26/2022 Received Temperature: 26.1 °C
Sample ID: AL04057 Facility Name: FULTON F1-SA Site ID: F1-SA Location ID: Location Descr:	

ANALYTE	PARAMETER CODE	EPA NOTE	METHOD	RESULT	UNITS	QUALIFIER RL	ANALYSIS		MCL or QC Range
							ANALYST	DATE	
<b>ETO by EPA Method TO-15 QC Batch 197922</b>									
Bromofluorobenzene(Surrogate QC Std.)			EPA TO-15	9.4308	ppbV		KL	8/2/2022	8 to 12
Ethylene Oxide			EPA TO-15	0.1632	ppbV	0.0232	KL	8/2/2022	
<b>ETO Results by EPA Method TO-15</b>									
Bromofluorobenzene(Surrogate QC Std.)			EPA TO-15	67.4586	ug/m3		KL	8/2/2022	57.22 to 85.84
Ethylene Oxide			EPA TO-15	0.2942	ug/m3	0.0418	KL	8/2/2022	

COMMENTS: \$ETO received in the lab at 8 in Hg.

ug/L: micrograms/liter  
 mg/L: milligrams/liter  
 mg/kg: milligrams/kilogram  
 ug/kg: micrograms/kilogram  
 ug/g: micrograms/gram  
 ppm: parts per million  
 ppb: parts per billion  
 org/L: organisms/liter

<: less than  
 MCL: Maximum Contaminant Level  
 RL: Reporting Limit  
 LSPC: result less than lower specification  
 USPC: result greater than upper specification  
 TIE: Tentatively Identified or Estimated  
 VIOL: Violation (result exceeds MCL)

**Laboratory Contacts:**

Lab Director: Mark Tolbert 470-524-0577  
 Inorganics: Carmen Pyles 470-524-0629  
 Metals: Shene Jones 470-524-0544  
 Organics: Mary Bowman 470-524-0639  
 GC Mass Spec: Ralph Schulz 470-524-0684  
 Microbiology: Mary Bowman 470-524-0709

**GEORGIA DEPARTMENT OF NATURAL RESOURCES  
ENVIRONMENTAL PROTECTION DIVISION**

5804 Peachtree Corners East, Norcross, GA 30092-3403  
(678) 248-7384

**LABORATORY REPORT**

TO: Ga EPD Air Program EPD Air Prot Ambient Monitoring 4244 International Pkwy Ste 120 Atlanta, GA 30354	Date Collected: 7/16/2022 Time Collected: 0:00 Sample Collector: J. BRYANT Chlorination: Sample Type: Received By: HZ
	Date Received: 8/1/2022 Time Received: 11:12 AM Project: DATA STUDY Reporting Date: 9/26/2022 Received Temperature: 21.4 °C
Sample ID: AL04058 Facility Name: COVINGTON C3-SA Site ID: C3-SA Location ID: Location Descr:	

ANALYTE	PARAMETER CODE	EPA NOTE	METHOD	RESULT	UNITS	QUALIFIER RL	ANALYSIS		MCL or QC Range
							ANALYST	DATE	
<b>ETO by EPA Method TO-15 QC Batch 197922</b>									
Bromofluorobenzene(Surrogate QC Std.)			EPA TO-15	9.2160	ppbV		KL	8/2/2022	8 to 12
Ethylene Oxide			EPA TO-15	0.0702	ppbV	SQ	0.0232	KL	8/2/2022
<b>ETO Results by EPA Method TO-15</b>									
Bromofluorobenzene(Surrogate QC Std.)			EPA TO-15	65.9222	ug/m3		KL	8/2/2022	57.22 to 85.84
Ethylene Oxide			EPA TO-15	0.1265	ug/m3	SQ	0.0418	KL	8/2/2022

COMMENTS: \$ETO received in the lab at 5.5 in Hg.

ug/L: micrograms/liter  
 mg/L: milligrams/liter  
 mg/kg: milligrams/kilogram  
 ug/kg: micrograms/kilogram  
 ug/g: micrograms/gram  
 ppm: parts per million  
 ppb: parts per billion  
 org/L: organisms/liter

<: less than  
 MCL: Maximum Contaminant Level  
 RL: Reporting Limit  
 LSPC: result less than lower specification  
 USPC: result greater than upper specification  
 TIE: Tentatively Identified or Estimated  
 VIOL: Violation (result exceeds MCL)

**Laboratory Contacts:**

Lab Director: Mark Tolbert 470-524-0577  
 Inorganics: Carmen Pyles 470-524-0629  
 Metals: Shene Jones 470-524-0544  
 Organics: Mary Bowman 470-524-0639  
 GC Mass Spec: Ralph Schulz 470-524-0684  
 Microbiology: Mary Bowman 470-524-0709

**GEORGIA DEPARTMENT OF NATURAL RESOURCES  
ENVIRONMENTAL PROTECTION DIVISION**

5804 Peachtree Corners East, Norcross, GA 30092-3403  
(678) 248-7384

**LABORATORY REPORT**

TO: Ga EPD Air Program EPD Air Prot Ambient Monitoring 4244 International Pkwy Ste 120 Atlanta, GA 30354	Date Collected: 7/16/2022 Time Collected: 0:00 Sample Collector: H. STREET Canister Number: 114350 Canister Cleaned: 6/27/2022 Received By: HZ
	Date Received: 7/19/2022 Time Received: 12:16 PM Project: AIR Reporting Date: 9/26/2022 Received Temperature: 23.4 °C
Sample ID: AL04060 Facility Name: SOUTH DEKALB QA Site ID: 013-089-0002 Location ID: Location Descr:	

ANALYTE	PARAMETER CODE	EPA NOTE	METHOD	RESULT	UNITS	QUALIFIER RL	ANALYSIS		MCL or QC Range
							ANALYST	DATE	
<b>ETO by EPA Method TO-15 QC Batch 197717</b>									
Bromofluorobenzene(Surrogate QC Std.)			EPA TO-15	9.5733	ppbV		KL	7/21/2022	8 to 12
Ethylene Oxide			EPA TO-15	0.0923	ppbV	0.0232	KL	7/21/2022	
<b>ETO Results by EPA Method TO-15</b>									
Bromofluorobenzene(Surrogate QC Std.)			EPA TO-15	68.4779	ug/m3		KL	7/21/2022	57.22 to 85.84
Ethylene Oxide			EPA TO-15	0.1664	ug/m3	0.0418	KL	7/21/2022	
<b>ETO NATTS QA Replicate Precision</b>									
Ethylene Oxide			EPA TO-15	8.00	%RPD		KL	7/21/2022	25
<b>ETO QA Replicate Result</b>									
Bromofluorobenzene(Surrogate QC Std.)			EPA TO-15	9.7068	ppbV		KL	7/21/2022	8 to 12
Ethylene Oxide			EPA TO-15	0.0852	ppbV	0.0232	KL	7/21/2022	

COMMENTS: \$ETO received in the lab at 0.5 in Hg.

ug/L: micrograms/liter  
 mg/L: milligrams/liter  
 mg/kg: milligrams/kilogram  
 ug/kg: micrograms/kilogram  
 ug/g: micrograms/gram  
 ppm: parts per million  
 ppb: parts per billion  
 org/L: organisms/liter

<: less than  
 MCL: Maximum Contaminant Level  
 RL: Reporting Limit  
 LSPC: result less than lower specification  
 USPC: result greater than upper specification  
 TIE: Tentatively Identified or Estimated  
 VIOL: Violation (result exceeds MCL)

**Laboratory Contacts:**

Lab Director: Mark Tolbert 470-524-0577  
 Inorganics: Carmen Pyles 470-524-0629  
 Metals: Shene Jones 470-524-0544  
 Organics: Mary Bowman 470-524-0639  
 GC Mass Spec: Ralph Schulz 470-524-0684  
 Microbiology: Mary Bowman 470-524-0709

**GEORGIA DEPARTMENT OF NATURAL RESOURCES  
ENVIRONMENTAL PROTECTION DIVISION**

5804 Peachtree Corners East, Norcross, GA 30092-3403  
(678) 248-7384

**LABORATORY REPORT**

TO: Ga EPD Air Program EPD Air Prot Ambient Monitoring 4244 International Pkwy Ste 120 Atlanta, GA 30354	Date Collected: 7/22/2022 Time Collected: 0:00 Sample Collector: H. STREET Canister Number: 111215 Canister Cleaned: 6/27/2022 Received By: HZ
	Date Received: 7/26/2022 Time Received: 1:26 PM Project: AIR Reporting Date: 9/26/2022 Received Temperature: 23.5 °C
Sample ID: AL04061 Facility Name: SOUTH DEKALB Site ID: 013-089-0002 Location ID: Location Descr:	

ANALYTE	PARAMETER CODE	EPA NOTE	METHOD	RESULT	UNITS	QUALIFIER RL	ANALYSIS		MCL or QC Range
							ANALYST	DATE	
<b>ETO by EPA Method TO-15 QC Batch 197846</b>									
Bromofluorobenzene(Surrogate QC Std.)			EPA TO-15	9.3684	ppbV		KL	7/28/2022	8 to 12
Ethylene Oxide			EPA TO-15	0.0841	ppbV	0.0232	KL	7/28/2022	
<b>ETO Results by EPA Method TO-15</b>									
Bromofluorobenzene(Surrogate QC Std.)			EPA TO-15	67.0123	ug/m3		KL	7/28/2022	57.22 to 85.84
Ethylene Oxide			EPA TO-15	0.1516	ug/m3	0.0418	KL	7/28/2022	

COMMENTS: \$ETO received in the lab at 0 psi.

ug/L: micrograms/liter  
 mg/L: milligrams/liter  
 mg/kg: milligrams/kilogram  
 ug/kg: micrograms/kilogram  
 ug/g: micrograms/gram  
 ppm: parts per million  
 ppb: parts per billion  
 org/L: organisms/liter

<: less than  
 MCL: Maximum Contaminant Level  
 RL: Reporting Limit  
 LSPC: result less than lower specification  
 USPC: result greater than upper specification  
 TIE: Tentatively Identified or Estimated  
 VIOL: Violation (result exceeds MCL)

**Laboratory Contacts:**

Lab Director: Mark Tolbert 470-524-0577  
 Inorganics: Carmen Pyles 470-524-0629  
 Metals: Shene Jones 470-524-0544  
 Organics: Mary Bowman 470-524-0639  
 GC Mass Spec: Ralph Schulz 470-524-0684  
 Microbiology: Mary Bowman 470-524-0709

**GEORGIA DEPARTMENT OF NATURAL RESOURCES  
ENVIRONMENTAL PROTECTION DIVISION**

5804 Peachtree Corners East, Norcross, GA 30092-3403  
(678) 248-7384

**LABORATORY REPORT**

TO: Ga EPD Air Program EPD Air Prot Ambient Monitoring 4244 International Pkwy Ste 120 Atlanta, GA 30354	Date Collected: 7/22/2022 Time Collected: 0:00 Sample Collector: H. STREET Canister Number: 110336 Canister Cleaned: 6/27/2022 Received By: HZ
	Date Received: 7/26/2022 Time Received: 1:26 PM Project: AIR Reporting Date: 9/26/2022 Received Temperature: 26.5 °C
Sample ID: AL04062 Facility Name: SOUTH DEKALB QA Site ID: 013-089-0002 Location ID: Location Descr:	

ANALYTE	PARAMETER CODE	EPA NOTE	METHOD	RESULT	UNITS	QUALIFIER RL	ANALYSIS		MCL or QC Range
							ANALYST	DATE	
<b>ETO by EPA Method TO-15 QC Batch 197846</b>									
Bromofluorobenzene(Surrogate QC Std.)			EPA TO-15	9.1838	ppbV		KL	7/28/2022	8 to 12
Ethylene Oxide			EPA TO-15	0.0923	ppbV	0.0232	KL	7/28/2022	
<b>ETO Results by EPA Method TO-15</b>									
Bromofluorobenzene(Surrogate QC Std.)			EPA TO-15	65.6918	ug/m3		KL	7/28/2022	57.22 to 85.84
Ethylene Oxide			EPA TO-15	0.1664	ug/m3	0.0418	KL	7/28/2022	
<b>ETO NATTS QA Replicate Precision</b>									
Ethylene Oxide			EPA TO-15	9.49	%RPD		KL	7/28/2022	25
<b>ETO QA Replicate Result</b>									
Bromofluorobenzene(Surrogate QC Std.)			EPA TO-15	9.1243	ppbV		KL	7/28/2022	8 to 12
Ethylene Oxide			EPA TO-15	0.1015	ppbV	0.0232	KL	7/28/2022	

COMMENTS: \$ETO received in the lab at 0 psi.

ug/L: micrograms/liter  
 mg/L: milligrams/liter  
 mg/kg: milligrams/kilogram  
 ug/kg: micrograms/kilogram  
 ug/g: micrograms/gram  
 ppm: parts per million  
 ppb: parts per billion  
 org/L: organisms/liter

<: less than  
 MCL: Maximum Contaminant Level  
 RL: Reporting Limit  
 LSPC: result less than lower specification  
 USPC: result greater than upper specification  
 TIE: Tentatively Identified or Estimated  
 VIOL: Violation (result exceeds MCL)

**Laboratory Contacts:**

Lab Director: Mark Tolbert 470-524-0577  
 Inorganics: Carmen Pyles 470-524-0629  
 Metals: Shene Jones 470-524-0544  
 Organics: Mary Bowman 470-524-0639  
 GC Mass Spec: Ralph Schulz 470-524-0684  
 Microbiology: Mary Bowman 470-524-0709

**GEORGIA DEPARTMENT OF NATURAL RESOURCES  
ENVIRONMENTAL PROTECTION DIVISION**

5804 Peachtree Corners East, Norcross, GA 30092-3403  
(678) 248-7384

**LABORATORY REPORT**

TO: Ga EPD Air Program EPD Air Prot Ambient Monitoring 4244 International Pkwy Ste 120 Atlanta, GA 30354	Date Collected: 7/16/2022 Time Collected: 0:00 Sample Collector: H. STREET Canister Number: 114321 Canister Cleaned: 6/27/2022 Received By: HZ
	Date Received: 7/19/2022 Time Received: 12:16 PM Project: AIR Reporting Date: 9/26/2022 Received Temperature: 23.1 °C
Sample ID: AL04063 Facility Name: SOUTH DEKALB Site ID: 013-089-0002 Location ID: Location Descr:	

ANALYTE	PARAMETER CODE	EPA NOTE	METHOD	RESULT	UNITS	QUALIFIER RL	ANALYSIS		MCL or QC Range
							ANALYST	DATE	
<b>ETO by EPA Method TO-15 QC Batch 197717</b>									
Bromofluorobenzene(Surrogate QC Std.)			EPA TO-15	9.3725	ppbV		KL	7/21/2022	8 to 12
Ethylene Oxide			EPA TO-15	0.0853	ppbV	0.0232	KL	7/21/2022	
<b>ETO Results by EPA Method TO-15</b>									
Bromofluorobenzene(Surrogate QC Std.)			EPA TO-15	67.0416	ug/m3		KL	7/21/2022	57.22 to 85.84
Ethylene Oxide			EPA TO-15	0.1538	ug/m3	0.0418	KL	7/21/2022	

COMMENTS: \$ETO received in the lab at 4.8 psi.

ug/L: micrograms/liter mg/L: milligrams/liter mg/kg: milligrams/kilogram ug/kg: micrograms/kilogram ug/g: micrograms/gram ppm: parts per million ppb: parts per billion org/L: organisms/liter	<: less than MCL: Maximum Contaminant Level RL: Reporting Limit LSPC: result less than lower specification USPC: result greater than upper specification TIE: Tentatively Identified or Estimated VIOL: Violation (result exceeds MCL)	<b>Laboratory Contacts:</b> Lab Director: Mark Tolbert 470-524-0577 Inorganics: Carmen Pyles 470-524-0629 Metals: Shene Jones 470-524-0544 Organics: Mary Bowman 470-524-0639 GC Mass Spec: Ralph Schulz 470-524-0684 Microbiology: Mary Bowman 470-524-0709
---	--	--

**GEORGIA DEPARTMENT OF NATURAL RESOURCES  
ENVIRONMENTAL PROTECTION DIVISION**

5804 Peachtree Corners East, Norcross, GA 30092-3403  
(678) 248-7384

**LABORATORY REPORT**

TO: Ga EPD Air Program EPD Air Prot Ambient Monitoring 4244 International Pkwy Ste 120 Atlanta, GA 30354	Date Collected: 7/22/2022 Time Collected: 0:00 Sample Collector: H. STREET Canister Number: 117224 Canister Cleaned: 6/27/2022 Received By: HZ
	Date Received: 7/26/2022 Time Received: 1:25 PM Project: AIR Reporting Date: 9/26/2022 Received Temperature: 21.9 °C
Sample ID: AL04064 Facility Name: SOUTH DEKALB Site ID: 013-089-0002 Location ID: Location Descr:	

ANALYTE	PARAMETER CODE	EPA NOTE	METHOD	RESULT	UNITS	QUALIFIER RL	ANALYSIS		MCL or QC Range
							ANALYST	DATE	
<b>ETO by EPA Method TO-15 QC Batch 197846</b>									
Bromofluorobenzene(Surrogate QC Std.)			EPA TO-15	9.5010	ppbV		KL	7/28/2022	8 to 12
Ethylene Oxide			EPA TO-15	0.0862	ppbV	0.0232	KL	7/28/2022	
<b>ETO Results by EPA Method TO-15</b>									
Bromofluorobenzene(Surrogate QC Std.)			EPA TO-15	67.9608	ug/m3		KL	7/28/2022	57.22 to 85.84
Ethylene Oxide			EPA TO-15	0.1554	ug/m3	0.0418	KL	7/28/2022	

COMMENTS: \$ETO received in the lab at 4.4 psi.

ug/L: micrograms/liter  
 mg/L: milligrams/liter  
 mg/kg: milligrams/kilogram  
 ug/kg: micrograms/kilogram  
 ug/g: micrograms/gram  
 ppm: parts per million  
 ppb: parts per billion  
 org/L: organisms/liter

<: less than  
 MCL: Maximum Contaminant Level  
 RL: Reporting Limit  
 LSPC: result less than lower specification  
 USPC: result greater than upper specification  
 TIE: Tentatively Identified or Estimated  
 VIOL: Violation (result exceeds MCL)

**Laboratory Contacts:**

Lab Director: Mark Tolbert 470-524-0577  
 Inorganics: Carmen Pyles 470-524-0629  
 Metals: Shene Jones 470-524-0544  
 Organics: Mary Bowman 470-524-0639  
 GC Mass Spec: Ralph Schulz 470-524-0684  
 Microbiology: Mary Bowman 470-524-0709



**GEORGIA DEPARTMENT OF NATURAL RESOURCES  
ENVIRONMENTAL PROTECTION DIVISION**

5804 Peachtree Corners East, Norcross, GA 30092-3403  
(678) 248-7384

**LABORATORY REPORT**

TO: Ga EPD Air Program EPD Air Prot Ambient Monitoring 4244 International Pkwy Ste 120 Atlanta, GA 30354	Date Collected: 7/16/2022 Time Collected: 0:00 Sample Collector: H. STREET Canister Number: 114309 Canister Cleaned: 6/27/2022 Received By: HZ
	Date Received: 7/19/2022 Time Received: 12:16 PM Project: AIR Reporting Date: 9/26/2022 Received Temperature: 25.6 °C
Sample ID: AL04065 Facility Name: SOUTH DEKALB Site ID: 013-089-0002 Location ID: Location Descr:	

ANALYTE	PARAMETER CODE	EPA NOTE	METHOD	RESULT	UNITS	QUALIFIER RL	ANALYSIS		MCL or QC Range
							ANALYST	DATE	
<b>ETO by EPA Method TO-15 QC Batch 197717</b>									
Bromofluorobenzene(Surrogate QC Std.)			EPA TO-15	9.5131	ppbV		KL	7/21/2022	8 to 12
Ethylene Oxide			EPA TO-15	0.0704	ppbV	SQ	0.0232	KL	7/21/2022
<b>ETO Results by EPA Method TO-15</b>									
Bromofluorobenzene(Surrogate QC Std.)			EPA TO-15	68.0473	ug/m3		KL	7/21/2022	57.22 to 85.84
Ethylene Oxide			EPA TO-15	0.1269	ug/m3	SQ	0.0418	KL	7/21/2022

COMMENTS: \$ETO received in the lab at 5.8 psi.

ug/L: micrograms/liter  
 mg/L: milligrams/liter  
 mg/kg: milligrams/kilogram  
 ug/kg: micrograms/kilogram  
 ug/g: micrograms/gram  
 ppm: parts per million  
 ppb: parts per billion  
 org/L: organisms/liter

<: less than  
 MCL: Maximum Contaminant Level  
 RL: Reporting Limit  
 LSPC: result less than lower specification  
 USPC: result greater than upper specification  
 TIE: Tentatively Identified or Estimated  
 VIOL: Violation (result exceeds MCL)

**Laboratory Contacts:**

Lab Director: Mark Tolbert 470-524-0577  
 Inorganics: Carmen Pyles 470-524-0629  
 Metals: Shene Jones 470-524-0544  
 Organics: Mary Bowman 470-524-0639  
 GC Mass Spec: Ralph Schulz 470-524-0684  
 Microbiology: Mary Bowman 470-524-0709

**GEORGIA DEPARTMENT OF NATURAL RESOURCES  
ENVIRONMENTAL PROTECTION DIVISION**

5804 Peachtree Corners East, Norcross, GA 30092-3403  
(678) 248-7384

**LABORATORY REPORT**

TO: Ga EPD Air Program EPD Air Prot Ambient Monitoring 4244 International Pkwy Ste 120 Atlanta, GA 30354	Date Collected: 7/16/2022 Time Collected: 0:00 Sample Collector: H. STREET Canister Number: 114332 Canister Cleaned: 6/27/2022 Received By: HZ
	Date Received: 7/19/2022 Time Received: 12:16 PM Project: AIR Reporting Date: 9/26/2022 Received Temperature: 21.7 °C
Sample ID: AL04066 Facility Name: SOUTH DEKALB Site ID: 013-089-0002 Location ID: Location Descr:	

ANALYTE	PARAMETER CODE	EPA NOTE	METHOD	RESULT	UNITS	QUALIFIER RL	ANALYSIS		MCL or QC Range
							ANALYST	DATE	
<b>ETO by EPA Method TO-15 QC Batch 197717</b>									
Bromofluorobenzene(Surrogate QC Std.)			EPA TO-15	8.9223	ppbV		KL	7/21/2022	8 to 12
Ethylene Oxide			EPA TO-15	0.0838	ppbV	0.0232	KL	7/21/2022	
<b>ETO Results by EPA Method TO-15</b>									
Bromofluorobenzene(Surrogate QC Std.)			EPA TO-15	63.8213	ug/m3		KL	7/21/2022	57.22 to 85.84
Ethylene Oxide			EPA TO-15	0.1511	ug/m3	0.0418	KL	7/21/2022	

COMMENTS: \$ETO received in the lab at 0.5 in Hg.

ug/L: micrograms/liter  
 mg/L: milligrams/liter  
 mg/kg: milligrams/kilogram  
 ug/kg: micrograms/kilogram  
 ug/g: micrograms/gram  
 ppm: parts per million  
 ppb: parts per billion  
 org/L: organisms/liter

<: less than  
 MCL: Maximum Contaminant Level  
 RL: Reporting Limit  
 LSPC: result less than lower specification  
 USPC: result greater than upper specification  
 TIE: Tentatively Identified or Estimated  
 VIOL: Violation (result exceeds MCL)

**Laboratory Contacts:**

Lab Director: Mark Tolbert 470-524-0577  
 Inorganics: Carmen Pyles 470-524-0629  
 Metals: Shene Jones 470-524-0544  
 Organics: Mary Bowman 470-524-0639  
 GC Mass Spec: Ralph Schulz 470-524-0684  
 Microbiology: Mary Bowman 470-524-0709

**GEORGIA DEPARTMENT OF NATURAL RESOURCES  
ENVIRONMENTAL PROTECTION DIVISION**

5804 Peachtree Corners East, Norcross, GA 30092-3403  
(678) 248-7384

**LABORATORY REPORT**

TO: Ga EPD Air Program EPD Air Prot Ambient Monitoring 4244 International Pkwy Ste 120 Atlanta, GA 30354	Date Collected: 7/26/2022 Time Collected: 0:00 Sample Collector: H. STREET Canister Number: 114393 Canister Cleaned: 7/11/2022 Received By: HZ
	Date Received: 7/29/2022 Time Received: 11:56 AM Project: AIR Reporting Date: 9/26/2022 Received Temperature: 24.1 °C
Sample ID: AL05250 Facility Name: SOUTH DEKALB Site ID: 013-089-0002 Location ID: QCCAN Location Descr:	

ANALYTE	PARAMETER CODE	EPA NOTE	METHOD	RESULT	UNITS	QUALIFIER RL	ANALYSIS		MCL or QC Range
							ANALYST	DATE	
<b>ETO by EPA Method TO-15 QC Batch 197922</b>									
Bromofluorobenzene(Surrogate QC Std.)			EPA TO-15	9.3502	ppbV		KL	8/2/2022	8 to 12
Ethylene Oxide			EPA TO-15	0.0488	ppbV	SQ	0.0232	KL	8/2/2022
<b>ETO Results by EPA Method TO-15</b>									
Bromofluorobenzene(Surrogate QC Std.)			EPA TO-15	66.8821	ug/m3		KL	8/2/2022	57.22 to 85.84
Ethylene Oxide			EPA TO-15	0.088	ug/m3	SQ	0.0418	KL	8/2/2022

COMMENTS: \$ETO received in the lab at 5.8 psi. This is an ETO makeup sample for 7-10-2022.

ug/L: micrograms/liter  
 mg/L: milligrams/liter  
 mg/kg: milligrams/kilogram  
 ug/kg: micrograms/kilogram  
 ug/g: micrograms/gram  
 ppm: parts per million  
 ppb: parts per billion  
 org/L: organisms/liter

<: less than  
 MCL: Maximum Contaminant Level  
 RL: Reporting Limit  
 LSPC: result less than lower specification  
 USPC: result greater than upper specification  
 TIE: Tentatively Identified or Estimated  
 VIOL: Violation (result exceeds MCL)

**Laboratory Contacts:**

Lab Director: Mark Tolbert 470-524-0577  
 Inorganics: Carmen Pyles 470-524-0629  
 Metals: Shene Jones 470-524-0544  
 Organics: Mary Bowman 470-524-0639  
 GC Mass Spec: Ralph Schulz 470-524-0684  
 Microbiology: Mary Bowman 470-524-0709

**GEORGIA DEPARTMENT OF NATURAL RESOURCES  
ENVIRONMENTAL PROTECTION DIVISION**

5804 Peachtree Corners East, Norcross, GA 30092-3403  
(678) 248-7384

**LABORATORY REPORT**

TO: Ga EPD Air Program EPD Air Prot Ambient Monitoring 4244 International Pkwy Ste 120 Atlanta, GA 30354	Date Collected: 7/26/2022 Time Collected: 0:00 Sample Collector: H. STREET Canister Number: 114391 Canister Cleaned: 7/11/2022 Received By: HZ
	Date Received: 7/29/2022 Time Received: 11:56 AM Project: AIR Reporting Date: 9/26/2022 Received Temperature: 24.1 °C
Sample ID: AL05251 Facility Name: SOUTH DEKALB QA Site ID: 013-089-0002 Location ID: Location Descr:	

ANALYTE	PARAMETER CODE	EPA NOTE	METHOD	RESULT	UNITS	QUALIFIER RL	ANALYSIS		MCL or QC Range
							ANALYST	DATE	
<b>ETO by EPA Method TO-15 QC Batch 197922</b>									
Bromofluorobenzene(Surrogate QC Std.)			EPA TO-15	9.3607	ppbV		KL	8/3/2022	8 to 12
Ethylene Oxide			EPA TO-15	0.0492	ppbV	SQ	0.0232	KL	8/3/2022
<b>ETO Results by EPA Method TO-15</b>									
Bromofluorobenzene(Surrogate QC Std.)			EPA TO-15	66.9572	ug/m3		KL	8/3/2022	57.22 to 85.84
Ethylene Oxide			EPA TO-15	0.0887	ug/m3	SQ	0.0418	KL	8/3/2022
<b>ETO NATTS QA Replicate Precision</b>									
Ethylene Oxide			EPA TO-15	14.9	%RPD		KL	8/3/2022	25
<b>ETO QA Replicate Result</b>									
Bromofluorobenzene(Surrogate QC Std.)			EPA TO-15	9.3520	ppbV		KL	8/3/2022	8 to 12
Ethylene Oxide			EPA TO-15	0.0571	ppbV	SQ	0.0232	KL	8/3/2022

COMMENTS: \$ETO received in the lab at 5.2 psi. This is an ETO makeup sample for 7-10-2022.

ug/L: micrograms/liter  
 mg/L: milligrams/liter  
 mg/kg: milligrams/kilogram  
 ug/kg: micrograms/kilogram  
 ug/g: micrograms/gram  
 ppm: parts per million  
 ppb: parts per billion  
 org/L: organisms/liter

<: less than  
 MCL: Maximum Contaminant Level  
 RL: Reporting Limit  
 LSPC: result less than lower specification  
 USPC: result greater than upper specification  
 TIE: Tentatively Identified or Estimated  
 VIOL: Violation (result exceeds MCL)

**Laboratory Contacts:**

Lab Director: Mark Tolbert 470-524-0577  
 Inorganics: Carmen Pyles 470-524-0629  
 Metals: Shene Jones 470-524-0544  
 Organics: Mary Bowman 470-524-0639  
 GC Mass Spec: Ralph Schulz 470-524-0684  
 Microbiology: Mary Bowman 470-524-0709

**GEORGIA DEPARTMENT OF NATURAL RESOURCES  
ENVIRONMENTAL PROTECTION DIVISION**

5804 Peachtree Corners East, Norcross, GA 30092-3403  
(678) 248-7384

**LABORATORY REPORT**

TO: Ga EPD Air Program EPD Air Prot Ambient Monitoring 4244 International Pkwy Ste 120 Atlanta, GA 30354	Date Collected: 7/28/2022 Time Collected: 0:00 Sample Collector: J. BRYANT Chlorination: Sample Type: Received By: HZ
	Date Received: 8/5/2022 Time Received: 11:26 AM Project: DATA STUDY Reporting Date: 9/26/2022 Received Temperature: 21.4 °C
Sample ID: AL05252 Facility Name: COBB S2 Site ID: S2 Location ID: Location Descr:	

ANALYTE	PARAMETER CODE	EPA NOTE	METHOD	RESULT	UNITS	QUALIFIER RL	ANALYSIS		MCL or QC Range
							ANALYST	DATE	
<b>ETO by EPA Method TO-15 QC Batch 198047</b>									
Bromofluorobenzene(Surrogate QC Std.)			EPA TO-15	9.1504	ppbV		KL	8/9/2022	8 to 12
Ethylene Oxide			EPA TO-15	0.0482	ppbV	SQ	0.0232	KL	8/9/2022
<b>ETO Results by EPA Method TO-15</b>									
Bromofluorobenzene(Surrogate QC Std.)			EPA TO-15	65.4529	ug/m3		KL	8/9/2022	57.22 to 85.84
Ethylene Oxide			EPA TO-15	0.0869	ug/m3	SQ	0.0418	KL	8/9/2022

COMMENTS: \$ETO received in the lab at 5.5 in Hg.

ug/L: micrograms/liter  
 mg/L: milligrams/liter  
 mg/kg: milligrams/kilogram  
 ug/kg: micrograms/kilogram  
 ug/g: micrograms/gram  
 ppm: parts per million  
 ppb: parts per billion  
 org/L: organisms/liter

<: less than  
 MCL: Maximum Contaminant Level  
 RL: Reporting Limit  
 LSPC: result less than lower specification  
 USPC: result greater than upper specification  
 TIE: Tentatively Identified or Estimated  
 VIOL: Violation (result exceeds MCL)

**Laboratory Contacts:**

Lab Director: Mark Tolbert 470-524-0577  
 Inorganics: Carmen Pyles 470-524-0629  
 Metals: Shene Jones 470-524-0544  
 Organics: Mary Bowman 470-524-0639  
 GC Mass Spec: Ralph Schulz 470-524-0684  
 Microbiology: Mary Bowman 470-524-0709

**GEORGIA DEPARTMENT OF NATURAL RESOURCES  
ENVIRONMENTAL PROTECTION DIVISION**

5804 Peachtree Corners East, Norcross, GA 30092-3403  
(678) 248-7384

**LABORATORY REPORT**

TO: Ga EPD Air Program EPD Air Prot Ambient Monitoring 4244 International Pkwy Ste 120 Atlanta, GA 30354	Date Collected: 7/22/2022 Time Collected: 0:00 Sample Collector: H. STREET Canister Number: 110259 Canister Cleaned: 7/11/2022 Received By: HZ
	Date Received: 7/26/2022 Time Received: 1:26 PM Project: AIR Reporting Date: 9/26/2022 Received Temperature: 24.9 °C
Sample ID: AL05253 Facility Name: SOUTH DEKALB Site ID: 013-089-0002 Location ID: Location Descr:	

ANALYTE	PARAMETER CODE	EPA NOTE	METHOD	RESULT	UNITS	QUALIFIER RL	ANALYSIS		MCL or QC Range
							ANALYST	DATE	
<b>ETO by EPA Method TO-15 QC Batch 197846</b>									
Bromofluorobenzene(Surrogate QC Std.)			EPA TO-15	9.7705	ppbV		KL	7/28/2022	8 to 12
Ethylene Oxide			EPA TO-15	0.0880	ppbV	0.0232	KL	7/28/2022	
<b>ETO Results by EPA Method TO-15</b>									
Bromofluorobenzene(Surrogate QC Std.)			EPA TO-15	69.8885	ug/m3		KL	7/28/2022	57.22 to 85.84
Ethylene Oxide			EPA TO-15	0.1586	ug/m3	0.0418	KL	7/28/2022	

COMMENTS: \$ETO received in the lab at 5.8 psi.

ug/L: micrograms/liter  
 mg/L: milligrams/liter  
 mg/kg: milligrams/kilogram  
 ug/kg: micrograms/kilogram  
 ug/g: micrograms/gram  
 ppm: parts per million  
 ppb: parts per billion  
 org/L: organisms/liter

<: less than  
 MCL: Maximum Contaminant Level  
 RL: Reporting Limit  
 LSPC: result less than lower specification  
 USPC: result greater than upper specification  
 TIE: Tentatively Identified or Estimated  
 VIOL: Violation (result exceeds MCL)

**Laboratory Contacts:**

Lab Director: Mark Tolbert 470-524-0577  
 Inorganics: Carmen Pyles 470-524-0629  
 Metals: Shene Jones 470-524-0544  
 Organics: Mary Bowman 470-524-0639  
 GC Mass Spec: Ralph Schulz 470-524-0684  
 Microbiology: Mary Bowman 470-524-0709

**GEORGIA DEPARTMENT OF NATURAL RESOURCES  
ENVIRONMENTAL PROTECTION DIVISION**

5804 Peachtree Corners East, Norcross, GA 30092-3403  
(678) 248-7384

**LABORATORY REPORT**

TO: Ga EPD Air Program EPD Air Prot Ambient Monitoring 4244 International Pkwy Ste 120 Atlanta, GA 30354	Date Collected: 7/27/2022 Time Collected: 0:00 Sample Collector: J. BRYANT Chlorination: Sample Type: Trip Blank Received By: HZ
	Date Received: 8/5/2022 Time Received: 11:26 AM Project: DATA STUDY Reporting Date: 9/26/2022 Received Temperature: 21.6 °C
Sample ID: AL05254 Facility Name: COBB S2 FB Site ID: S2 Location ID: Location Descr:	

ANALYTE	PARAMETER CODE	EPA NOTE	METHOD	RESULT	UNITS	QUALIFIER RL	ANALYSIS		MCL or QC Range
							ANALYST	DATE	
<b>ETO by EPA Method TO-15 QC Batch 198047</b>									
Bromofluorobenzene(Surrogate QC Std.)			EPA TO-15	9.9073	ppbV		KL	8/9/2022	8 to 12
Ethylene Oxide			EPA TO-15	0	ppbV	ND	0.0232	KL	8/9/2022
<b>ETO Results by EPA Method TO-15</b>									
Bromofluorobenzene(Surrogate QC Std.)			EPA TO-15	70.867	ug/m3		KL	8/9/2022	57.22 to 85.84
Ethylene Oxide			EPA TO-15	0	ug/m3	ND	0.0418	KL	8/9/2022

COMMENTS: \$ETO received in the lab at 29 in Hg.

ug/L: micrograms/liter  
 mg/L: milligrams/liter  
 mg/kg: milligrams/kilogram  
 ug/kg: micrograms/kilogram  
 ug/g: micrograms/gram  
 ppm: parts per million  
 ppb: parts per billion  
 org/L: organisms/liter

<: less than  
 MCL: Maximum Contaminant Level  
 RL: Reporting Limit  
 LSPC: result less than lower specification  
 USPC: result greater than upper specification  
 TIE: Tentatively Identified or Estimated  
 VIOL: Violation (result exceeds MCL)

**Laboratory Contacts:**

Lab Director: Mark Tolbert 470-524-0577  
 Inorganics: Carmen Pyles 470-524-0629  
 Metals: Shene Jones 470-524-0544  
 Organics: Mary Bowman 470-524-0639  
 GC Mass Spec: Ralph Schulz 470-524-0684  
 Microbiology: Mary Bowman 470-524-0709

**GEORGIA DEPARTMENT OF NATURAL RESOURCES  
ENVIRONMENTAL PROTECTION DIVISION**

5804 Peachtree Corners East, Norcross, GA 30092-3403  
(678) 248-7384

**LABORATORY REPORT**

TO: Ga EPD Air Program EPD Air Prot Ambient Monitoring 4244 International Pkwy Ste 120 Atlanta, GA 30354	Date Collected: 7/28/2022 Time Collected: 0:00 Sample Collector: J. BRYANT Chlorination: Sample Type: Received By: HZ
	Date Received: 8/5/2022 Time Received: 11:26 AM Project: DATA STUDY Reporting Date: 9/26/2022 Received Temperature: 20.1 °C
Sample ID: AL05255 Facility Name: COVINGTON C2 Site ID: C2 Location ID: Location Descr:	

ANALYTE	PARAMETER CODE	EPA NOTE	METHOD	RESULT	UNITS	QUALIFIER RL	ANALYSIS		MCL or QC Range
							ANALYST	DATE	
<b>ETO by EPA Method TO-15 QC Batch 198047</b>									
Bromofluorobenzene(Surrogate QC Std.)			EPA TO-15	9.2166	ppbV		KL	8/9/2022	8 to 12
Ethylene Oxide			EPA TO-15	0.0640	ppbV	SQ	0.0232	KL	8/9/2022
<b>ETO Results by EPA Method TO-15</b>									
Bromofluorobenzene(Surrogate QC Std.)			EPA TO-15	65.9264	ug/m3		KL	8/9/2022	57.22 to 85.84
Ethylene Oxide			EPA TO-15	0.1154	ug/m3	SQ	0.0418	KL	8/9/2022

COMMENTS: \$ETO received in the lab at 5 in Hg.

ug/L: micrograms/liter  
 mg/L: milligrams/liter  
 mg/kg: milligrams/kilogram  
 ug/kg: micrograms/kilogram  
 ug/g: micrograms/gram  
 ppm: parts per million  
 ppb: parts per billion  
 org/L: organisms/liter

<: less than  
 MCL: Maximum Contaminant Level  
 RL: Reporting Limit  
 LSPC: result less than lower specification  
 USPC: result greater than upper specification  
 TIE: Tentatively Identified or Estimated  
 VIOL: Violation (result exceeds MCL)

**Laboratory Contacts:**

Lab Director: Mark Tolbert 470-524-0577  
 Inorganics: Carmen Pyles 470-524-0629  
 Metals: Shene Jones 470-524-0544  
 Organics: Mary Bowman 470-524-0639  
 GC Mass Spec: Ralph Schulz 470-524-0684  
 Microbiology: Mary Bowman 470-524-0709



**GEORGIA DEPARTMENT OF NATURAL RESOURCES  
ENVIRONMENTAL PROTECTION DIVISION**

5804 Peachtree Corners East, Norcross, GA 30092-3403  
(678) 248-7384

**LABORATORY REPORT**

TO: Ga EPD Air Program EPD Air Prot Ambient Monitoring 4244 International Pkwy Ste 120 Atlanta, GA 30354	Date Collected: 7/26/2022 Time Collected: 0:00 Sample Collector: J. BRYANT Chlorination: Sample Type: Trip Blank Received By: HZ
	Date Received: 8/5/2022 Time Received: 11:26 AM Project: DATA STUDY Reporting Date: 9/26/2022 Received Temperature: 23.4 °C
Sample ID: AL05256 Facility Name: COVINGTON C2 FB Site ID: C2 Location ID: Location Descr:	

ANALYTE	PARAMETER CODE	EPA NOTE	METHOD	RESULT	UNITS	QUALIFIER RL	ANALYSIS		MCL or QC Range
							ANALYST	DATE	
<b>ETO by EPA Method TO-15 QC Batch 198047</b>									
Bromofluorobenzene(Surrogate QC Std.)			EPA TO-15	9.7783	ppbV		KL	8/9/2022	8 to 12
Ethylene Oxide			EPA TO-15	0	ppbV	ND	0.0232	KL	8/9/2022
<b>ETO Results by EPA Method TO-15</b>									
Bromofluorobenzene(Surrogate QC Std.)			EPA TO-15	69.9443	ug/m3		KL	8/9/2022	57.22 to 85.84
Ethylene Oxide			EPA TO-15	0	ug/m3	ND	0.0418	KL	8/9/2022

COMMENTS: \$ETO received in the lab at 28 in Hg.

ug/L: micrograms/liter  
 mg/L: milligrams/liter  
 mg/kg: milligrams/kilogram  
 ug/kg: micrograms/kilogram  
 ug/g: micrograms/gram  
 ppm: parts per million  
 ppb: parts per billion  
 org/L: organisms/liter

<: less than  
 MCL: Maximum Contaminant Level  
 RL: Reporting Limit  
 LSPC: result less than lower specification  
 USPC: result greater than upper specification  
 TIE: Tentatively Identified or Estimated  
 VIOL: Violation (result exceeds MCL)

**Laboratory Contacts:**

Lab Director: Mark Tolbert 470-524-0577  
 Inorganics: Carmen Pyles 470-524-0629  
 Metals: Shene Jones 470-524-0544  
 Organics: Mary Bowman 470-524-0639  
 GC Mass Spec: Ralph Schulz 470-524-0684  
 Microbiology: Mary Bowman 470-524-0709

**GEORGIA DEPARTMENT OF NATURAL RESOURCES  
ENVIRONMENTAL PROTECTION DIVISION**

5804 Peachtree Corners East, Norcross, GA 30092-3403  
(678) 248-7384

**LABORATORY REPORT**

TO: Ga EPD Air Program EPD Air Prot Ambient Monitoring 4244 International Pkwy Ste 120 Atlanta, GA 30354	Date Collected: 7/27/2022 Time Collected: 0:00 Sample Collector: J. BRYANT Chlorination: Sample Type: Received By: HZ
	Date Received: 8/5/2022 Time Received: 11:26 AM Project: DATA STUDY Reporting Date: 9/26/2022 Received Temperature: 22.6 °C
Sample ID: AL05257 Facility Name: FULTON F2 FB Site ID: F2 Location ID: Location Descr:	

ANALYTE	PARAMETER CODE	EPA NOTE	METHOD	RESULT	UNITS	QUALIFIER RL	ANALYSIS		MCL or QC Range
							ANALYST	DATE	
<b>ETO by EPA Method TO-15 QC Batch 198047</b>									
Bromofluorobenzene(Surrogate QC Std.)			EPA TO-15	9.8780	ppbV		KL	8/9/2022	8 to 12
Ethylene Oxide			EPA TO-15	0	ppbV	ND	0.0232	KL	8/9/2022
<b>ETO Results by EPA Method TO-15</b>									
Bromofluorobenzene(Surrogate QC Std.)			EPA TO-15	70.6574	ug/m3		KL	8/9/2022	57.22 to 85.84
Ethylene Oxide			EPA TO-15	0	ug/m3	ND	0.0418	KL	8/9/2022

COMMENTS: \$ETO received in the lab at 29 in Hg.

ug/L: micrograms/liter  
 mg/L: milligrams/liter  
 mg/kg: milligrams/kilogram  
 ug/kg: micrograms/kilogram  
 ug/g: micrograms/gram  
 ppm: parts per million  
 ppb: parts per billion  
 org/L: organisms/liter

<: less than  
 MCL: Maximum Contaminant Level  
 RL: Reporting Limit  
 LSPC: result less than lower specification  
 USPC: result greater than upper specification  
 TIE: Tentatively Identified or Estimated  
 VIOL: Violation (result exceeds MCL)

**Laboratory Contacts:**

Lab Director: Mark Tolbert 470-524-0577  
 Inorganics: Carmen Pyles 470-524-0629  
 Metals: Shene Jones 470-524-0544  
 Organics: Mary Bowman 470-524-0639  
 GC Mass Spec: Ralph Schulz 470-524-0684  
 Microbiology: Mary Bowman 470-524-0709

**GEORGIA DEPARTMENT OF NATURAL RESOURCES  
ENVIRONMENTAL PROTECTION DIVISION**

5804 Peachtree Corners East, Norcross, GA 30092-3403  
(678) 248-7384

**LABORATORY REPORT**

TO: Ga EPD Air Program EPD Air Prot Ambient Monitoring 4244 International Pkwy Ste 120 Atlanta, GA 30354	Date Collected: 7/28/2022 Time Collected: 0:00 Sample Collector: C KNOX Chlorination: Sample Type: Received By: HZ
	Date Received: 8/8/2022 Time Received: 3:35 PM Project: DATA STUDY Reporting Date: 9/26/2022 Received Temperature: 23.6 °C
Sample ID: AL05258 Facility Name: GENERAL COFFEE Site ID: 013-069-0002 Location ID: QCCAN Location Descr:	

ANALYTE	PARAMETER CODE	EPA NOTE	METHOD	RESULT	UNITS	QUALIFIER RL	ANALYSIS		MCL or QC Range
							ANALYST	DATE	
<b>ETO by EPA Method TO-15 QC Batch 198047</b>									
Bromofluorobenzene(Surrogate QC Std.)			EPA TO-15	8.9930	ppbV		KL	8/9/2022	8 to 12
Ethylene Oxide			EPA TO-15	0.0486	ppbV	SQ 2	0.0232	KL	8/9/2022
<b>ETO Results by EPA Method TO-15</b>									
Bromofluorobenzene(Surrogate QC Std.)			EPA TO-15	64.327	ug/m3		KL	8/9/2022	57.22 to 85.84
Ethylene Oxide			EPA TO-15	0.0876	ug/m3	SQ 2	0.0418	KL	8/9/2022

COMMENTS: \$ETO received in the lab at 19.6 psi. Pressure difference of >0.5 psi between receipt from field and receipt in lab.

ug/L: micrograms/liter mg/L: milligrams/liter mg/kg: milligrams/kilogram ug/kg: micrograms/kilogram ug/g: micrograms/gram ppm: parts per million ppb: parts per billion org/L: organisms/liter	<: less than MCL: Maximum Contaminant Level RL: Reporting Limit LSPC: result less than lower specification USPC: result greater than upper specification TIE: Tentatively Identified or Estimated VIOL: Violation (result exceeds MCL)	<b>Laboratory Contacts:</b> Lab Director: Mark Tolbert 470-524-0577 Inorganics: Carmen Pyles 470-524-0629 Metals: Shene Jones 470-524-0544 Organics: Mary Bowman 470-524-0639 GC Mass Spec: Ralph Schulz 470-524-0684 Microbiology: Mary Bowman 470-524-0709
---	--	--

**GEORGIA DEPARTMENT OF NATURAL RESOURCES  
ENVIRONMENTAL PROTECTION DIVISION**

5804 Peachtree Corners East, Norcross, GA 30092-3403  
(678) 248-7384

**LABORATORY REPORT**

TO: Ga EPD Air Program EPD Air Prot Ambient Monitoring 4244 International Pkwy Ste 120 Atlanta, GA 30354	Date Collected: 7/28/2022 Time Collected: 0:00 Sample Collector: H. STREET Canister Number: 114389 Canister Cleaned: 7/11/2022 Received By: HZ
	Date Received: 8/1/2022 Time Received: 11:13 AM Project: AIR Reporting Date: 9/26/2022 Received Temperature: 21.0 °C
Sample ID: AL05260 Facility Name: SOUTH DEKALB Site ID: 013-089-0002 Location ID: Location Descr:	

ANALYTE	PARAMETER CODE	EPA NOTE	METHOD	RESULT	UNITS	QUALIFIER RL	ANALYSIS		MCL or QC Range
							ANALYST	DATE	
<b>ETO by EPA Method TO-15 QC Batch 197922</b>									
Bromofluorobenzene(Surrogate QC Std.)			EPA TO-15	9.1856	ppbV		KL	8/3/2022	8 to 12
Ethylene Oxide			EPA TO-15	0.0491	ppbV	SQ	0.0232	KL	8/3/2022
<b>ETO Results by EPA Method TO-15</b>									
Bromofluorobenzene(Surrogate QC Std.)			EPA TO-15	65.7047	ug/m3		KL	8/3/2022	57.22 to 85.84
Ethylene Oxide			EPA TO-15	0.0885	ug/m3	SQ	0.0418	KL	8/3/2022

COMMENTS: \$ETO received in the lab at 5.4 psi.

ug/L: micrograms/liter mg/L: milligrams/liter mg/kg: milligrams/kilogram ug/kg: micrograms/kilogram ug/g: micrograms/gram ppm: parts per million ppb: parts per billion org/L: organisms/liter	<: less than MCL: Maximum Contaminant Level RL: Reporting Limit LSPC: result less than lower specification USPC: result greater than upper specification TIE: Tentatively Identified or Estimated VIOL: Violation (result exceeds MCL)	<b>Laboratory Contacts:</b> Lab Director: Mark Tolbert 470-524-0577 Inorganics: Carmen Pyles 470-524-0629 Metals: Shene Jones 470-524-0544 Organics: Mary Bowman 470-524-0639 GC Mass Spec: Ralph Schulz 470-524-0684 Microbiology: Mary Bowman 470-524-0709
---	--	--

**GEORGIA DEPARTMENT OF NATURAL RESOURCES  
ENVIRONMENTAL PROTECTION DIVISION**

5804 Peachtree Corners East, Norcross, GA 30092-3403  
(678) 248-7384

**LABORATORY REPORT**

TO: Ga EPD Air Program EPD Air Prot Ambient Monitoring 4244 International Pkwy Ste 120 Atlanta, GA 30354	Date Collected: 7/28/2022 Time Collected: 0:00 Sample Collector: H. STREET Canister Number: 114322 Canister Cleaned: 7/11/2022 Received By: HZ
	Date Received: 8/1/2022 Time Received: 11:12 AM Project: AIR Reporting Date: 9/26/2022 Received Temperature: 21.7 °C
Sample ID: AL05261 Facility Name: SOUTH DEKALB Site ID: 013-089-0002 Location ID: Location Descr:	

ANALYTE	PARAMETER CODE	EPA NOTE	METHOD	RESULT	UNITS	QUALIFIER RL	ANALYSIS		MCL or QC Range
							ANALYST	DATE	
<b>ETO by EPA Method TO-15 QC Batch 197922</b>									
Bromofluorobenzene(Surrogate QC Std.)			EPA TO-15	9.1790	ppbV		KL	8/3/2022	8 to 12
Ethylene Oxide			EPA TO-15	0.0488	ppbV	SQ	0.0232	KL	8/3/2022
<b>ETO Results by EPA Method TO-15</b>									
Bromofluorobenzene(Surrogate QC Std.)			EPA TO-15	65.6575	ug/m3		KL	8/3/2022	57.22 to 85.84
Ethylene Oxide			EPA TO-15	0.088	ug/m3	SQ	0.0418	KL	8/3/2022

COMMENTS: \$ETO received in the lab at 1 in Hg.

ug/L: micrograms/liter  
 mg/L: milligrams/liter  
 mg/kg: milligrams/kilogram  
 ug/kg: micrograms/kilogram  
 ug/g: micrograms/gram  
 ppm: parts per million  
 ppb: parts per billion  
 org/L: organisms/liter

<: less than  
 MCL: Maximum Contaminant Level  
 RL: Reporting Limit  
 LSPC: result less than lower specification  
 USPC: result greater than upper specification  
 TIE: Tentatively Identified or Estimated  
 VIOL: Violation (result exceeds MCL)

**Laboratory Contacts:**

Lab Director: Mark Tolbert 470-524-0577  
 Inorganics: Carmen Pyles 470-524-0629  
 Metals: Shene Jones 470-524-0544  
 Organics: Mary Bowman 470-524-0639  
 GC Mass Spec: Ralph Schulz 470-524-0684  
 Microbiology: Mary Bowman 470-524-0709

**GEORGIA DEPARTMENT OF NATURAL RESOURCES  
ENVIRONMENTAL PROTECTION DIVISION**

5804 Peachtree Corners East, Norcross, GA 30092-3403  
(678) 248-7384

**LABORATORY REPORT**

TO: Ga EPD Air Program EPD Air Prot Ambient Monitoring 4244 International Pkwy Ste 120 Atlanta, GA 30354	Date Collected: 7/28/2022 Time Collected: 0:00 Sample Collector: J. BRYANT Chlorination: Sample Type: Received By: HZ
	Date Received: 8/5/2022 Time Received: 11:26 AM Project: DATA STUDY Reporting Date: 9/26/2022 Received Temperature: 20.1 °C
Sample ID: AL05262 Facility Name: FULTON F2 Site ID: F2 Location ID: Location Descr:	

ANALYTE	PARAMETER CODE	EPA NOTE	METHOD	RESULT	UNITS	QUALIFIER RL	ANALYSIS		MCL or QC Range
							ANALYST	DATE	
<b>ETO by EPA Method TO-15 QC Batch 198047</b>									
Bromofluorobenzene(Surrogate QC Std.)			EPA TO-15	9.4133	ppbV		KL	8/9/2022	8 to 12
Ethylene Oxide			EPA TO-15	0.1439	ppbV	0.0232	KL	8/9/2022	
<b>ETO Results by EPA Method TO-15</b>									
Bromofluorobenzene(Surrogate QC Std.)			EPA TO-15	67.3334	ug/m3		KL	8/9/2022	57.22 to 85.84
Ethylene Oxide			EPA TO-15	0.2594	ug/m3	0.0418	KL	8/9/2022	

COMMENTS: \$ETO received in the lab at 7 in Hg.

ug/L: micrograms/liter  
 mg/L: milligrams/liter  
 mg/kg: milligrams/kilogram  
 ug/kg: micrograms/kilogram  
 ug/g: micrograms/gram  
 ppm: parts per million  
 ppb: parts per billion  
 org/L: organisms/liter

<: less than  
 MCL: Maximum Contaminant Level  
 RL: Reporting Limit  
 LSPC: result less than lower specification  
 USPC: result greater than upper specification  
 TIE: Tentatively Identified or Estimated  
 VIOL: Violation (result exceeds MCL)

**Laboratory Contacts:**

Lab Director: Mark Tolbert 470-524-0577  
 Inorganics: Carmen Pyles 470-524-0629  
 Metals: Shene Jones 470-524-0544  
 Organics: Mary Bowman 470-524-0639  
 GC Mass Spec: Ralph Schulz 470-524-0684  
 Microbiology: Mary Bowman 470-524-0709

**GEORGIA DEPARTMENT OF NATURAL RESOURCES  
ENVIRONMENTAL PROTECTION DIVISION**

5804 Peachtree Corners East, Norcross, GA 30092-3403  
(678) 248-7384

**LABORATORY REPORT**

TO: Ga EPD Air Program EPD Air Prot Ambient Monitoring 4244 International Pkwy Ste 120 Atlanta, GA 30354	Date Collected: 7/28/2022 Time Collected: 0:00 Sample Collector: H. STREET Canister Number: 114379 Canister Cleaned: 7/11/2022 Received By: HZ
	Date Received: 8/1/2022 Time Received: 11:13 AM Project: AIR Reporting Date: 9/26/2022 Received Temperature: 23.6 °C
Sample ID: AL05263 Facility Name: south dekalb qa Site ID: 013-089-0002 Location ID: Location Descr:	

ANALYTE	PARAMETER CODE	EPA NOTE	METHOD	RESULT	UNITS	QUALIFIER RL	ANALYSIS		MCL or QC Range
							ANALYST	DATE	
<b>ETO by EPA Method TO-15 QC Batch 197922</b>									
Bromofluorobenzene(Surrogate QC Std.)			EPA TO-15	9.7100	ppbV		KL	8/3/2022	8 to 12
Ethylene Oxide			EPA TO-15	0.0560	ppbV	SQ	0.0232	KL	8/3/2022
<b>ETO Results by EPA Method TO-15</b>									
Bromofluorobenzene(Surrogate QC Std.)			EPA TO-15	69.4557	ug/m3		KL	8/3/2022	57.22 to 85.84
Ethylene Oxide			EPA TO-15	0.1009	ug/m3	SQ	0.0418	KL	8/3/2022
<b>ETO NATTS QA Replicate Precision</b>									
Ethylene Oxide			EPA TO-15	6.40	%RPD		KL	8/3/2022	25
<b>ETO QA Replicate Result</b>									
Bromofluorobenzene(Surrogate QC Std.)			EPA TO-15	9.7431	ppbV		KL	8/3/2022	8 to 12
Ethylene Oxide			EPA TO-15	0.0597	ppbV	SQ	0.0232	KL	8/3/2022

COMMENTS: \$ETO received in the lab at 1 in Hg.

ug/L: micrograms/liter  
 mg/L: milligrams/liter  
 mg/kg: milligrams/kilogram  
 ug/kg: micrograms/kilogram  
 ug/g: micrograms/gram  
 ppm: parts per million  
 ppb: parts per billion  
 org/L: organisms/liter

<: less than  
 MCL: Maximum Contaminant Level  
 RL: Reporting Limit  
 LSPC: result less than lower specification  
 USPC: result greater than upper specification  
 TIE: Tentatively Identified or Estimated  
 VIOL: Violation (result exceeds MCL)

**Laboratory Contacts:**

Lab Director: Mark Tolbert 470-524-0577  
 Inorganics: Carmen Pyles 470-524-0629  
 Metals: Shene Jones 470-524-0544  
 Organics: Mary Bowman 470-524-0639  
 GC Mass Spec: Ralph Schulz 470-524-0684  
 Microbiology: Mary Bowman 470-524-0709

**GEORGIA DEPARTMENT OF NATURAL RESOURCES  
ENVIRONMENTAL PROTECTION DIVISION**

5804 Peachtree Corners East, Norcross, GA 30092-3403  
(678) 248-7384

**LABORATORY REPORT**

TO: Ga EPD Air Program EPD Air Prot Ambient Monitoring 4244 International Pkwy Ste 120 Atlanta, GA 30354	Date Collected: 7/28/2022 Time Collected: 0:00 Sample Collector: H. STREET Canister Number: 114378 Canister Cleaned: 7/11/2022 Received By: HZ Date Received: 8/1/2022 Time Received: 11:12 AM Project: AIR Reporting Date: 9/26/2022 Received Temperature: 19.9 °C
Sample ID: AL05264 Facility Name: SOUTH DEKALB Site ID: 013-089-0002 Location ID: Location Descr:	

ANALYTE	PARAMETER CODE	EPA NOTE	METHOD	RESULT	UNITS	QUALIFIER RL	ANALYSIS		MCL or QC Range
							ANALYST	DATE	
<b>ETO by EPA Method TO-15 QC Batch 197922</b>									
Bromofluorobenzene(Surrogate QC Std.)			EPA TO-15	9.8765	ppbV		KL	8/2/2022	8 to 12
Ethylene Oxide			EPA TO-15	0.0827	ppbV	0.0232	KL	8/2/2022	
<b>ETO Results by EPA Method TO-15</b>									
Bromofluorobenzene(Surrogate QC Std.)			EPA TO-15	70.6467	ug/m3		KL	8/2/2022	57.22 to 85.84
Ethylene Oxide			EPA TO-15	0.1491	ug/m3	0.0418	KL	8/2/2022	

COMMENTS: \$ETO received in the lab at 5.6 psi.

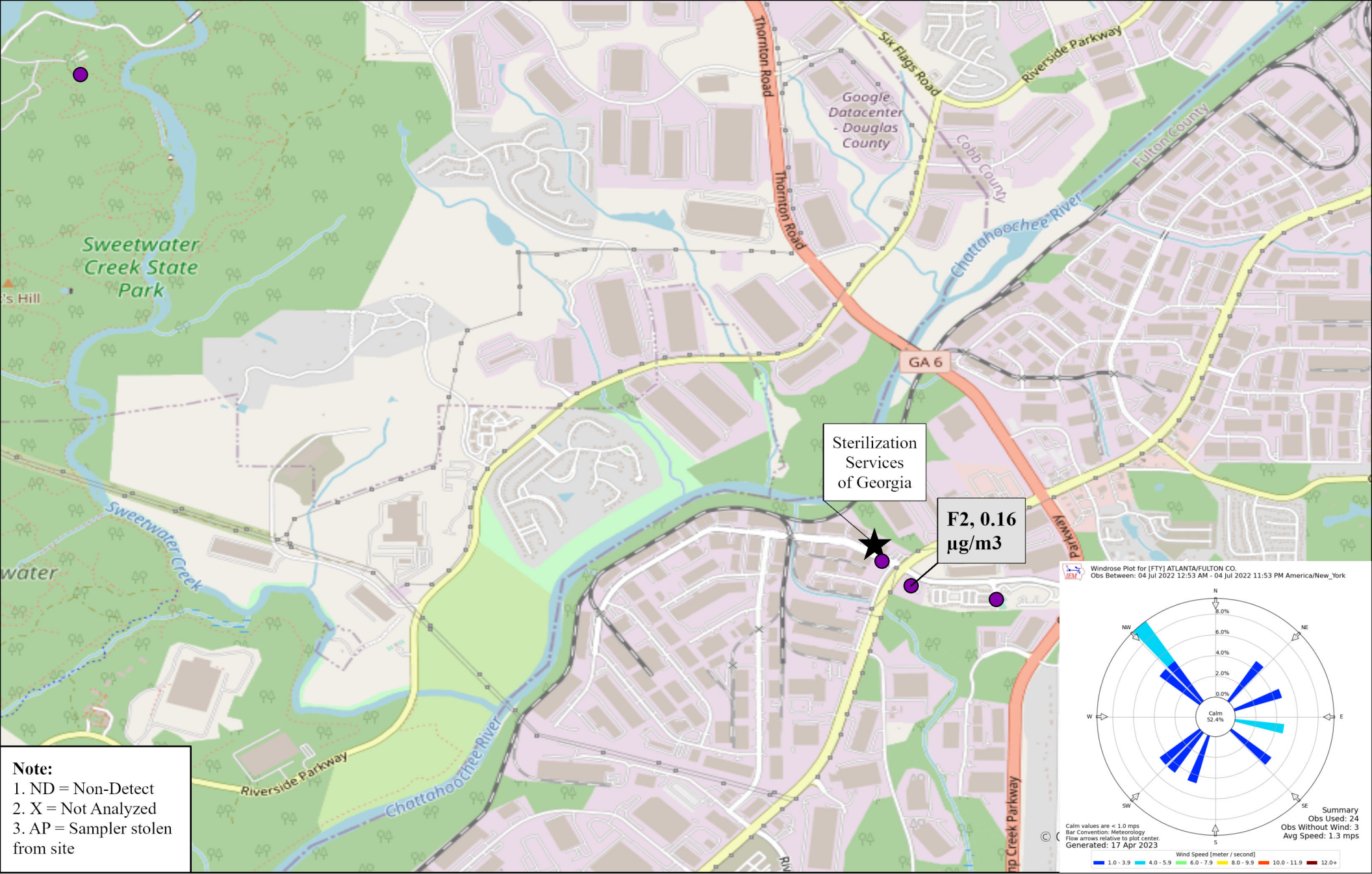
ug/L: micrograms/liter  
 mg/L: milligrams/liter  
 mg/kg: milligrams/kilogram  
 ug/kg: micrograms/kilogram  
 ug/g: micrograms/gram  
 ppm: parts per million  
 ppb: parts per billion  
 org/L: organisms/liter

<: less than  
 MCL: Maximum Contaminant Level  
 RL: Reporting Limit  
 LSPC: result less than lower specification  
 USPC: result greater than upper specification  
 TIE: Tentatively Identified or Estimated  
 VIOL: Violation (result exceeds MCL)

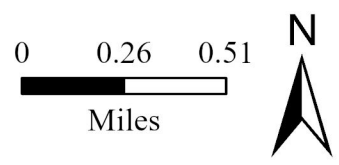
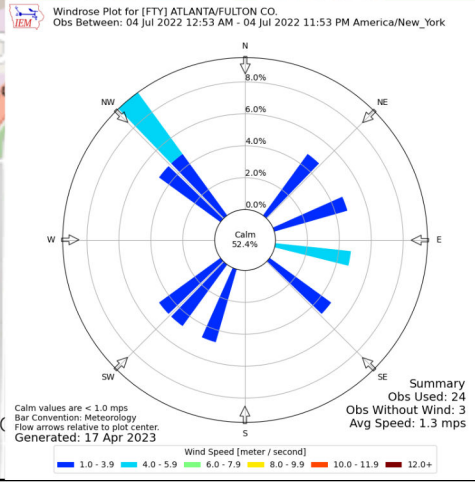
**Laboratory Contacts:**

Lab Director: Mark Tolbert 470-524-0577  
 Inorganics: Carmen Pyles 470-524-0629  
 Metals: Shene Jones 470-524-0544  
 Organics: Mary Bowman 470-524-0639  
 GC Mass Spec: Ralph Schulz 470-524-0684  
 Microbiology: Mary Bowman 470-524-0709





**Note:**  
 1. ND = Non-Detect  
 2. X = Not Analyzed  
 3. AP = Sampler stolen from site



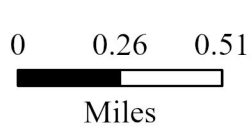
Site ID, Concentration ( $\mu\text{g}/\text{m}^3$ )

Ethylene Oxide Sampling  
 Fulton County, GA

07/04/2022  
 Sampled By: Georgia Environmental Protection Division  
 Analyzed By: Georgia Environmental Protection Division







Site ID, Concentration ( $\mu\text{g}/\text{m}^3$ )

Ethylene Oxide Sampling  
 Fulton County, GA

07/16/2022

Sampled By: Georgia Environmental Protection Division  
 Analyzed By: Georgia Environmental Protection Division



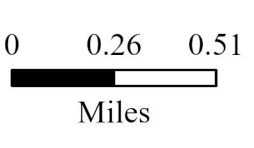
**GEORGIA**  
 DEPARTMENT OF NATURAL RESOURCES

**ENVIRONMENTAL PROTECTION DIVISION**





**Note:**  
 1. ND = Non-Detect  
 2. X = Not Analyzed  
 3. AP = Sampler stolen from site



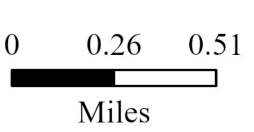
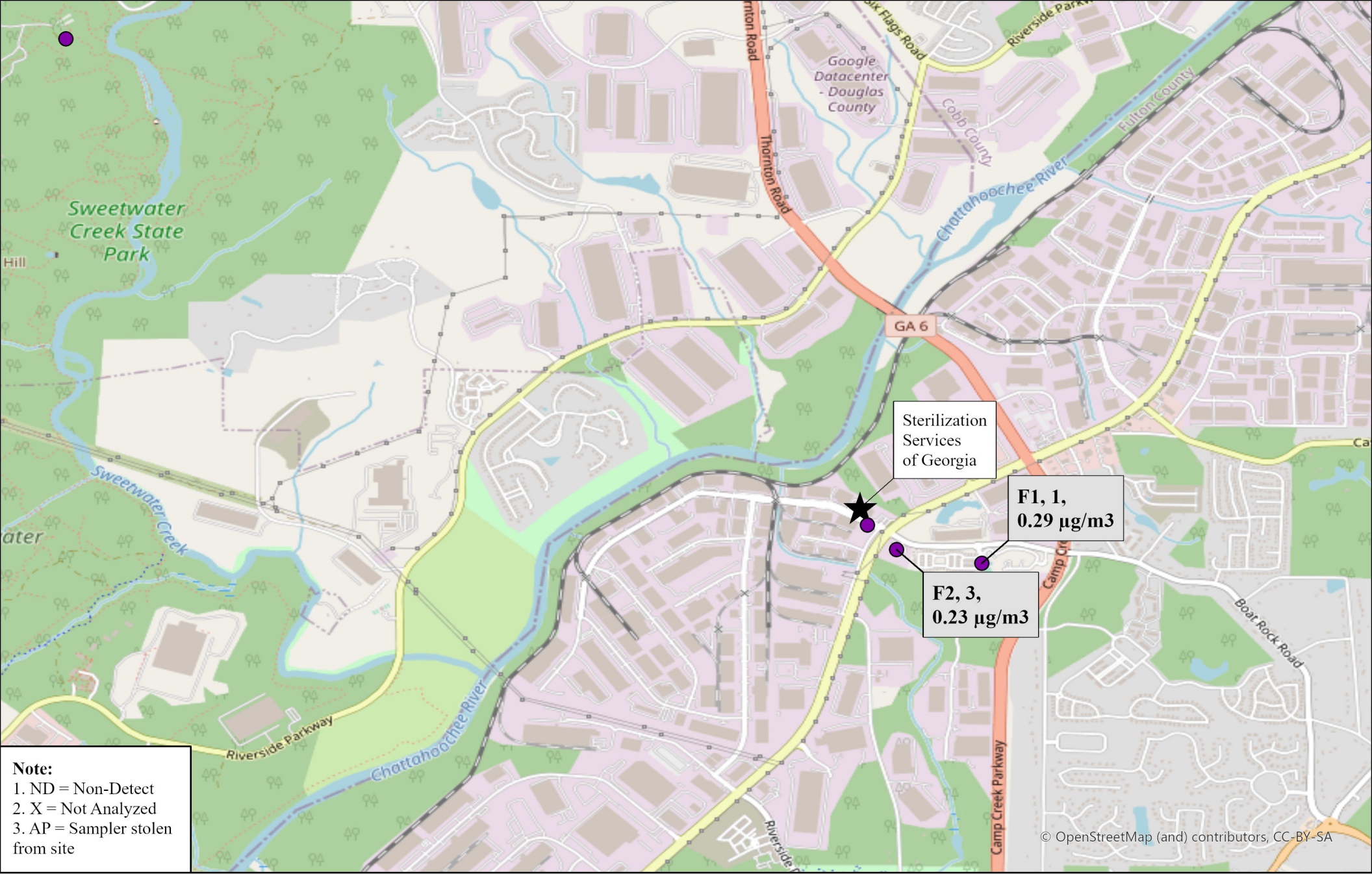
Site ID, Concentration ( $\mu\text{g}/\text{m}^3$ )

Ethylene Oxide Sampling  
 Fulton County, GA

07/28/2022  
 Sampled By: Georgia Environmental Protection Division  
 Analyzed By: Georgia Environmental Protection Division







**Site ID, Number of Samples, Concentration (µg/m3)**

Ethylene Oxide Sampling  
 Fulton County, GA

July 2022 Site Average Values  
 Note: Not detectable values were included in average calculations as a value of 0.  
 Sampled By: Georgia Environmental Protection Division  
 Analyzed By: Georgia Environmental Protection Division

