



February 28, 2023

**MEMORANDUM**

To: Karen Hays, Air Branch Chief *KH*

Through: James Boylan, Assistant Branch Chief

Through: DeAnna Oser, Ambient Monitoring Program Manager

From: Jaime Gore, Operations 1 Unit Manager

RE: Fulton – March 6 – March 30, 2022, Sampling Results for Ethylene Oxide

Samples of Ethylene Oxide (EtO) were collected during the period of March 6 – March 30, 2022, by the Ambient Monitoring Program in the Fulton area to characterize the EtO concentration. Each of the samples were sent to the Georgia Environmental Protection Division Laboratory (EPD) for analysis. The Qualifier code of “2” was given to samples to indicate that the collection deviated from established procedures, but the integrity of the sample was not compromised. The Qualifier code of “SQ” indicates the analysis of the sample was above the method detection limit but below the practical quantification limit.

Location	Date	Qualifier	EtO Concentration ( $\mu\text{g}/\text{m}^3$ )
F2	03/06/2022	SQ, 2	0.12
F2	03/18/2022		1.93
F2	03/30/2022	SQ	0.10
F2-QA	03/06/2022		0.34
F1-SA	03/18/2022	SQ, 2	0.05

If you have any questions, please let me know.

JCG

**GEORGIA DEPARTMENT OF NATURAL RESOURCES  
ENVIRONMENTAL PROTECTION DIVISION**

5804 Peachtree Corners East, Norcross, GA 30092-3403  
(678) 248-7384

**LABORATORY REPORT**

TO: Ga EPD Air Program EPD Air Prot Ambient Monitoring 4244 International Pkwy Ste 120 Atlanta, GA 30354	Date Collected: 3/6/2022 Time Collected: 0:00 Sample Collector: J. BRYANT Chlorination: Sample Type: Received By: HZ
	Date Received: 3/15/2022 Time Received: 10:14 AM Project: DATA STUDY Reporting Date: 5/24/2022 Received Temperature: 23.6 °C
Sample ID: AK94712 Facility Name: COBB S2 Site ID: S2 Location ID: Location Descr:	

ANALYTE	PARAMETER CODE	EPA NOTE	METHOD	RESULT	UNITS	QUALIFIER RL	ANALYSIS		MCL or QC Range
							ANALYST	DATE	
<b>ETO by EPA Method TO-15 QC Batch 195427</b>									
Bromofluorobenzene(Surrogate QC Std.)			EPA TO-15	9.7924	ppbV		KL	3/16/2022	8 to 12
Ethylene Oxide			EPA TO-15	0.0355	ppbV	SQ	0.0232	KL	3/16/2022
<b>ETO Results by EPA Method TO-15</b>									
Bromofluorobenzene(Surrogate QC Std.)			EPA TO-15	70.0452	ug/m3		KL	3/16/2022	57.22 to 85.84
Ethylene Oxide			EPA TO-15	0.064	ug/m3	SQ	0.0418	KL	3/16/2022

COMMENTS: \$ETO received in the lab at 5 in Hg.

ug/L: micrograms/liter mg/L: milligrams/liter mg/kg: milligrams/kilogram ug/kg: micrograms/kilogram ug/g: micrograms/gram ppm: parts per million ppb: parts per billion org/L: organisms/liter	<: less than MCL: Maximum Contaminant Level RL: Reporting Limit LSPC: result less than lower specification USPC: result greater than upper specification TIE: Tentatively Identified or Estimated VIOL: Violation (result exceeds MCL)	<b>Laboratory Contacts:</b> Lab Director: Mark Tolbert 470-524-0577 Inorganics: Carmen Pyles 470-524-0629 Metals: Shene Jones 470-524-0544 Organics: Mary Bowman 470-524-0639 GC Mass Spec: Ralph Schulz 470-524-0684 Microbiology: Mary Bowman 470-524-0709
---	--	--

**GEORGIA DEPARTMENT OF NATURAL RESOURCES  
ENVIRONMENTAL PROTECTION DIVISION**

5804 Peachtree Corners East, Norcross, GA 30092-3403  
(678) 248-7384

**LABORATORY REPORT**

TO: Ga EPD Air Program EPD Air Prot Ambient Monitoring 4244 International Pkwy Ste 120 Atlanta, GA 30354	Date Collected: 3/6/2022 Time Collected: 0:00 Sample Collector: J. BRYANT Chlorination: Sample Type: Received By: HZ
	Date Received: 3/15/2022 Time Received: 10:14 AM Project: DATA STUDY Reporting Date: 5/24/2022 Received Temperature: 20.3 °C
Sample ID: AK94713 Facility Name: COVINGTON C2-QA Site ID: C2-QA Location ID: Location Descr:	

ANALYTE	PARAMETER CODE	EPA NOTE	METHOD	RESULT	UNITS	QUALIFIER RL	ANALYSIS		MCL or QC Range
							ANALYST	DATE	
<b>ETO by EPA Method TO-15 QC Batch 195427</b>									
Bromofluorobenzene(Surrogate QC Std.)			EPA TO-15	9.5009	ppbV		KL	3/16/2022	8 to 12
Ethylene Oxide			EPA TO-15	0.0449	ppbV	SQ	0.0232	KL	3/16/2022
<b>ETO Results by EPA Method TO-15</b>									
Bromofluorobenzene(Surrogate QC Std.)			EPA TO-15	67.96	ug/m3		KL	3/16/2022	57.22 to 85.84
Ethylene Oxide			EPA TO-15	0.0809	ug/m3	SQ	0.0418	KL	3/16/2022

COMMENTS: \$ETO received in the lab at 6 in Hg.

ug/L: micrograms/liter  
 mg/L: milligrams/liter  
 mg/kg: milligrams/kilogram  
 ug/kg: micrograms/kilogram  
 ug/g: micrograms/gram  
 ppm: parts per million  
 ppb: parts per billion  
 org/L: organisms/liter

<: less than  
 MCL: Maximum Contaminant Level  
 RL: Reporting Limit  
 LSPC: result less than lower specification  
 USPC: result greater than upper specification  
 TIE: Tentatively Identified or Estimated  
 VIOL: Violation (result exceeds MCL)

**Laboratory Contacts:**

Lab Director: Mark Tolbert 470-524-0577  
 Inorganics: Carmen Pyles 470-524-0629  
 Metals: Shene Jones 470-524-0544  
 Organics: Mary Bowman 470-524-0639  
 GC Mass Spec: Ralph Schulz 470-524-0684  
 Microbiology: Mary Bowman 470-524-0709

**GEORGIA DEPARTMENT OF NATURAL RESOURCES  
ENVIRONMENTAL PROTECTION DIVISION**

5804 Peachtree Corners East, Norcross, GA 30092-3403  
(678) 248-7384

**LABORATORY REPORT**

TO: Ga EPD Air Program EPD Air Prot Ambient Monitoring 4244 International Pkwy Ste 120 Atlanta, GA 30354	Date Collected: 3/6/2022 Time Collected: 0:00 Sample Collector: J. BRYANT Chlorination: Sample Type: Received By: HZ
	Date Received: 3/15/2022 Time Received: 10:14 AM Project: DATA STUDY Reporting Date: 5/24/2022 Received Temperature: 19.6 °C
Sample ID: AK94714 Facility Name: FULTON F2-QA Site ID: F2-QA Location ID: Location Descr:	

ANALYTE	PARAMETER CODE	EPA NOTE	METHOD	RESULT	UNITS	QUALIFIER RL	ANALYSIS		MCL or QC Range
							ANALYST	DATE	
<b>ETO by EPA Method TO-15 QC Batch 195427</b>									
Bromofluorobenzene(Surrogate QC Std.)			EPA TO-15	9.3632	ppbV		KL	3/16/2022	8 to 12
Ethylene Oxide			EPA TO-15	0.1871	ppbV	0.0232	KL	3/16/2022	
<b>ETO Results by EPA Method TO-15</b>									
Bromofluorobenzene(Surrogate QC Std.)			EPA TO-15	66.9751	ug/m3		KL	3/16/2022	57.22 to 85.84
Ethylene Oxide			EPA TO-15	0.3373	ug/m3	0.0418	KL	3/16/2022	

COMMENTS: \$ETO received in the lab at 4.5 in Hg.

ug/L: micrograms/liter  
 mg/L: milligrams/liter  
 mg/kg: milligrams/kilogram  
 ug/kg: micrograms/kilogram  
 ug/g: micrograms/gram  
 ppm: parts per million  
 ppb: parts per billion  
 org/L: organisms/liter

<: less than  
 MCL: Maximum Contaminant Level  
 RL: Reporting Limit  
 LSPC: result less than lower specification  
 USPC: result greater than upper specification  
 TIE: Tentatively Identified or Estimated  
 VIOL: Violation (result exceeds MCL)

**Laboratory Contacts:**

Lab Director: Mark Tolbert 470-524-0577  
 Inorganics: Carmen Pyles 470-524-0629  
 Metals: Shene Jones 470-524-0544  
 Organics: Mary Bowman 470-524-0639  
 GC Mass Spec: Ralph Schulz 470-524-0684  
 Microbiology: Mary Bowman 470-524-0709

**GEORGIA DEPARTMENT OF NATURAL RESOURCES  
ENVIRONMENTAL PROTECTION DIVISION**

5804 Peachtree Corners East, Norcross, GA 30092-3403  
(678) 248-7384

**LABORATORY REPORT**

TO: Ga EPD Air Program EPD Air Prot Ambient Monitoring 4244 International Pkwy Ste 120 Atlanta, GA 30354	Date Collected: 3/6/2022 Time Collected: 0:00 Sample Collector: J. BRYANT Chlorination: Sample Type: Received By: HZ
	Date Received: 3/15/2022 Time Received: 10:14 AM Project: DATA STUDY Reporting Date: 5/24/2022 Received Temperature: 23.7 °C
Sample ID: AK94715 Facility Name: FULTON F2 Site ID: F2 Location ID: Location Descr:	

ANALYTE	PARAMETER CODE	EPA NOTE	METHOD	RESULT	UNITS	QUALIFIER RL	ANALYSIS		MCL or QC Range
							ANALYST	DATE	
<b>ETO by EPA Method TO-15 QC Batch 195427</b>									
Bromofluorobenzene(Surrogate QC Std.)			EPA TO-15	9.5898	ppbV		KL	3/16/2022	8 to 12
Ethylene Oxide			EPA TO-15	0.0671	ppbV	SQ	0.0232	KL	3/16/2022
<b>ETO Results by EPA Method TO-15</b>									
Bromofluorobenzene(Surrogate QC Std.)			EPA TO-15	68.596	ug/m3		KL	3/16/2022	57.22 to 85.84
Ethylene Oxide			EPA TO-15	0.121	ug/m3	SQ	0.0418	KL	3/16/2022

COMMENTS: \$ETO received in the lab at 7 in Hg.

ug/L: micrograms/liter mg/L: milligrams/liter mg/kg: milligrams/kilogram ug/kg: micrograms/kilogram ug/g: micrograms/gram ppm: parts per million ppb: parts per billion org/L: organisms/liter	<: less than MCL: Maximum Contaminant Level RL: Reporting Limit LSPC: result less than lower specification USPC: result greater than upper specification TIE: Tentatively Identified or Estimated VIOL: Violation (result exceeds MCL)	<b>Laboratory Contacts:</b> Lab Director: Mark Tolbert 470-524-0577 Inorganics: Carmen Pyles 470-524-0629 Metals: Shene Jones 470-524-0544 Organics: Mary Bowman 470-524-0639 GC Mass Spec: Ralph Schulz 470-524-0684 Microbiology: Mary Bowman 470-524-0709
---	--	--

**GEORGIA DEPARTMENT OF NATURAL RESOURCES  
ENVIRONMENTAL PROTECTION DIVISION**

5804 Peachtree Corners East, Norcross, GA 30092-3403  
(678) 248-7384

**LABORATORY REPORT**

TO: Ga EPD Air Program EPD Air Prot Ambient Monitoring 4244 International Pkwy Ste 120 Atlanta, GA 30354	Date Collected: 3/6/2022 Time Collected: 0:00 Sample Collector: C. KNOX Chlorination: Sample Type: Received By: HZ
	Date Received: 3/11/2022 Time Received: 8:04 AM Project: DATA STUDY Reporting Date: 5/24/2022 Received Temperature: 20.3 °C
Sample ID: AK94719 Facility Name: DOUGLAS - GENERAL COFFEE Site ID: 013-069-0002 Location ID: Location Descr:	

ANALYTE	PARAMETER CODE	EPA NOTE	METHOD	RESULT	UNITS	QUALIFIER RL	ANALYSIS		MCL or QC Range
							ANALYST	DATE	
<b>ETO by EPA Method TO-15 QC Batch 195358</b>									
Bromofluorobenzene(Surrogate QC Std.)			EPA TO-15	9.6114	ppbV		KL	3/11/2022	8 to 12
Ethylene Oxide			EPA TO-15	0.0336	ppbV	SQ 2	0.0232	KL	3/11/2022
<b>ETO Results by EPA Method TO-15</b>									
Bromofluorobenzene(Surrogate QC Std.)			EPA TO-15	68.7505	ug/m3		KL	3/11/2022	57.22 to 85.84
Ethylene Oxide			EPA TO-15	0.0606	ug/m3	SQ 2	0.0418	KL	3/11/2022

COMMENTS: \$ETO received in the lab at 21.4 psi. Pressure difference of >0.5 psi between receipt from field and receipt in lab.

ug/L: micrograms/liter mg/L: milligrams/liter mg/kg: milligrams/kilogram ug/kg: micrograms/kilogram ug/g: micrograms/gram ppm: parts per million ppb: parts per billion org/L: organisms/liter	<: less than MCL: Maximum Contaminant Level RL: Reporting Limit LSPC: result less than lower specification USPC: result greater than upper specification TIE: Tentatively Identified or Estimated VIOL: Violation (result exceeds MCL)	<b>Laboratory Contacts:</b> Lab Director: Mark Tolbert 470-524-0577 Inorganics: Carmen Pyles 470-524-0629 Metals: Shene Jones 470-524-0544 Organics: Mary Bowman 470-524-0639 GC Mass Spec: Ralph Schulz 470-524-0684 Microbiology: Mary Bowman 470-524-0709
---	--	--

**GEORGIA DEPARTMENT OF NATURAL RESOURCES  
ENVIRONMENTAL PROTECTION DIVISION**

5804 Peachtree Corners East, Norcross, GA 30092-3403  
(678) 248-7384

**LABORATORY REPORT**

TO: Ga EPD Air Program EPD Air Prot Ambient Monitoring 4244 International Pkwy Ste 120 Atlanta, GA 30354	Date Collected: 3/6/2022 Time Collected: 0:00 Sample Collector: H. STREET Canister Number: 114353 Canister Cleaned: 2/7/2022 Received By: HZ
	Date Received: 3/8/2022 Time Received: 11:24 AM Project: AIR Reporting Date: 5/24/2022 Received Temperature: 19.9 °C
Sample ID: AK94720 Facility Name: SOUTH DEKALB Site ID: 013-089-0002 Location ID: Location Descr:	

ANALYTE	PARAMETER CODE	EPA NOTE	METHOD	RESULT	UNITS	QUALIFIER RL	ANALYSIS		MCL or QC Range
							ANALYST	DATE	
<b>ETO by EPA Method TO-15 QC Batch 195310</b>									
Bromofluorobenzene(Surrogate QC Std.)			EPA TO-15	9.0065	ppbV		KL	3/9/2022	8 to 12
Ethylene Oxide			EPA TO-15	0.0474	ppbV	SQ	0.0232	KL	3/9/2022
<b>ETO Results by EPA Method TO-15</b>									
Bromofluorobenzene(Surrogate QC Std.)			EPA TO-15	64.4236	ug/m3		KL	3/9/2022	57.22 to 85.84
Ethylene Oxide			EPA TO-15	0.0854	ug/m3	SQ	0.0418	KL	3/9/2022

COMMENTS: \$ETO received in the lab at 5.4 psi.

ug/L: micrograms/liter mg/L: milligrams/liter mg/kg: milligrams/kilogram ug/kg: micrograms/kilogram ug/g: micrograms/gram ppm: parts per million ppb: parts per billion org/L: organisms/liter	<: less than MCL: Maximum Contaminant Level RL: Reporting Limit LSPC: result less than lower specification USPC: result greater than upper specification TIE: Tentatively Identified or Estimated VIOL: Violation (result exceeds MCL)	<b>Laboratory Contacts:</b> Lab Director: Mark Tolbert 470-524-0577 Inorganics: Carmen Pyles 470-524-0629 Metals: Shene Jones 470-524-0544 Organics: Mary Bowman 470-524-0639 GC Mass Spec: Ralph Schulz 470-524-0684 Microbiology: Mary Bowman 470-524-0709
---	--	--

**GEORGIA DEPARTMENT OF NATURAL RESOURCES  
ENVIRONMENTAL PROTECTION DIVISION**

5804 Peachtree Corners East, Norcross, GA 30092-3403  
(678) 248-7384

**LABORATORY REPORT**

TO: Ga EPD Air Program EPD Air Prot Ambient Monitoring 4244 International Pkwy Ste 120 Atlanta, GA 30354	Date Collected: 3/6/2022 Time Collected: 0:00 Sample Collector: J. BRYANT Chlorination: Sample Type: Received By: HZ
	Date Received: 3/15/2022 Time Received: 10:14 AM Project: DATA STUDY Reporting Date: 5/24/2022 Received Temperature: 24.6 °C
Sample ID: AK94722 Facility Name: COBB S2-QA Site ID: S2-QA Location ID: Location Descr:	

ANALYTE	PARAMETER CODE	EPA NOTE	METHOD	RESULT	UNITS	QUALIFIER RL	ANALYSIS		MCL or QC Range
							ANALYST	DATE	
<b>ETO by EPA Method TO-15 QC Batch 195427</b>									
Bromofluorobenzene(Surrogate QC Std.)			EPA TO-15	9.4168	ppbV		KL	3/16/2022	8 to 12
Ethylene Oxide			EPA TO-15	0.0399	ppbV	SQ	0.0232	KL	3/16/2022
<b>ETO Results by EPA Method TO-15</b>									
Bromofluorobenzene(Surrogate QC Std.)			EPA TO-15	67.3585	ug/m3		KL	3/16/2022	57.22 to 85.84
Ethylene Oxide			EPA TO-15	0.0719	ug/m3	SQ	0.0418	KL	3/16/2022

COMMENTS: \$ETO received in the lab at 4.5 in Hg.

ug/L: micrograms/liter  
 mg/L: milligrams/liter  
 mg/kg: milligrams/kilogram  
 ug/kg: micrograms/kilogram  
 ug/g: micrograms/gram  
 ppm: parts per million  
 ppb: parts per billion  
 org/L: organisms/liter

<: less than  
 MCL: Maximum Contaminant Level  
 RL: Reporting Limit  
 LSPC: result less than lower specification  
 USPC: result greater than upper specification  
 TIE: Tentatively Identified or Estimated  
 VIOL: Violation (result exceeds MCL)

**Laboratory Contacts:**

Lab Director: Mark Tolbert 470-524-0577  
 Inorganics: Carmen Pyles 470-524-0629  
 Metals: Shene Jones 470-524-0544  
 Organics: Mary Bowman 470-524-0639  
 GC Mass Spec: Ralph Schulz 470-524-0684  
 Microbiology: Mary Bowman 470-524-0709



**GEORGIA DEPARTMENT OF NATURAL RESOURCES  
ENVIRONMENTAL PROTECTION DIVISION**

5804 Peachtree Corners East, Norcross, GA 30092-3403  
(678) 248-7384

**LABORATORY REPORT**

TO: Ga EPD Air Program EPD Air Prot Ambient Monitoring 4244 International Pkwy Ste 120 Atlanta, GA 30354	Date Collected: 3/6/2022 Time Collected: 0:00 Sample Collector: J. BRYANT Chlorination: Sample Type: Received By: HZ
	Date Received: 3/15/2022 Time Received: 10:49 AM Project: DATA STUDY Reporting Date: 5/24/2022 Received Temperature: 20.14 °C
Sample ID: AK94723 Facility Name: COVINGTON C2 Site ID: C2 Location ID: Location Descr:	

ANALYTE	PARAMETER CODE	EPA NOTE	METHOD	RESULT	UNITS	QUALIFIER RL	ANALYSIS		MCL or QC Range
							ANALYST	DATE	
<b>ETO by EPA Method TO-15 QC Batch 195427</b>									
Bromofluorobenzene(Surrogate QC Std.)			EPA TO-15	9.4299	ppbV		KL	3/16/2022	8 to 12
Ethylene Oxide			EPA TO-15	0.0275	ppbV	SQ	0.0232	KL	3/16/2022
<b>ETO Results by EPA Method TO-15</b>									
Bromofluorobenzene(Surrogate QC Std.)			EPA TO-15	67.4522	ug/m3		KL	3/16/2022	57.22 to 85.84
Ethylene Oxide			EPA TO-15	0.0496	ug/m3	SQ	0.0418	KL	3/16/2022

COMMENTS: \$ETO received in the lab at 5 in Hg.

ug/L: micrograms/liter mg/L: milligrams/liter mg/kg: milligrams/kilogram ug/kg: micrograms/kilogram ug/g: micrograms/gram ppm: parts per million ppb: parts per billion org/L: organisms/liter	<: less than MCL: Maximum Contaminant Level RL: Reporting Limit LSPC: result less than lower specification USPC: result greater than upper specification TIE: Tentatively Identified or Estimated VIOL: Violation (result exceeds MCL)	<b>Laboratory Contacts:</b> Lab Director: Mark Tolbert 470-524-0577 Inorganics: Carmen Pyles 470-524-0629 Metals: Shene Jones 470-524-0544 Organics: Mary Bowman 470-524-0639 GC Mass Spec: Ralph Schulz 470-524-0684 Microbiology: Mary Bowman 470-524-0709
---	--	--

**GEORGIA DEPARTMENT OF NATURAL RESOURCES  
ENVIRONMENTAL PROTECTION DIVISION**

5804 Peachtree Corners East, Norcross, GA 30092-3403  
(678) 248-7384

**LABORATORY REPORT**

TO: Ga EPD Air Program EPD Air Prot Ambient Monitoring 4244 International Pkwy Ste 120 Atlanta, GA 30354	Date Collected: 3/18/2022 Time Collected: 0:00 Sample Collector: H. STREET Canister Number: 114352 Canister Cleaned: 2/21/2022 Received By: HZ
	Date Received: 3/22/2022 Time Received: 11:51 AM Project: AIR Reporting Date: 5/24/2022 Received Temperature: 23.1 °C
Sample ID: AK95692 Facility Name: SOUTH DEKALB Site ID: 013-089-0002 Location ID: QCCAN Location Descr:	

ANALYTE	PARAMETER CODE	EPA NOTE	METHOD	RESULT	UNITS	QUALIFIER RL	ANALYSIS		MCL or QC Range
							ANALYST	DATE	
<b>ETO by EPA Method TO-15 QC Batch 195515</b>									
Bromofluorobenzene(Surrogate QC Std.)			EPA TO-15	9.1961	ppbV		KL	3/22/2022	8 to 12
Ethylene Oxide			EPA TO-15	0.0385	ppbV	SQ	0.0232	KL	3/22/2022
<b>ETO Results by EPA Method TO-15</b>									
Bromofluorobenzene(Surrogate QC Std.)			EPA TO-15	65.7798	ug/m3		KL	3/22/2022	57.22 to 85.84
Ethylene Oxide			EPA TO-15	0.0694	ug/m3	SQ	0.0418	KL	3/22/2022

COMMENTS: \$ETO received in the lab at 5.2 psi.

ug/L: micrograms/liter  
 mg/L: milligrams/liter  
 mg/kg: milligrams/kilogram  
 ug/kg: micrograms/kilogram  
 ug/g: micrograms/gram  
 ppm: parts per million  
 ppb: parts per billion  
 org/L: organisms/liter

<: less than  
 MCL: Maximum Contaminant Level  
 RL: Reporting Limit  
 LSPC: result less than lower specification  
 USPC: result greater than upper specification  
 TIE: Tentatively Identified or Estimated  
 VIOL: Violation (result exceeds MCL)

**Laboratory Contacts:**

Lab Director: Mark Tolbert 470-524-0577  
 Inorganics: Carmen Pyles 470-524-0629  
 Metals: Shene Jones 470-524-0544  
 Organics: Mary Bowman 470-524-0639  
 GC Mass Spec: Ralph Schulz 470-524-0684  
 Microbiology: Mary Bowman 470-524-0709

**GEORGIA DEPARTMENT OF NATURAL RESOURCES  
ENVIRONMENTAL PROTECTION DIVISION**

5804 Peachtree Corners East, Norcross, GA 30092-3403  
(678) 248-7384

**LABORATORY REPORT**

TO: Ga EPD Air Program EPD Air Prot Ambient Monitoring 4244 International Pkwy Ste 120 Atlanta, GA 30354	Date Collected: 3/18/2022 Time Collected: 0:00 Sample Collector: J. BRYANT Chlorination: Sample Type: Received By: HZ
	Date Received: 4/1/2022 Time Received: 11:18 AM Project: DATA STUDY Reporting Date: 5/24/2022 Received Temperature: 21.6 °C
Sample ID: AK95693 Facility Name: FULTON F1-SA Site ID: F1-SA Location ID: Location Descr:	

ANALYTE	PARAMETER CODE	EPA NOTE	METHOD	RESULT	UNITS	QUALIFIER RL	ANALYSIS		MCL or QC Range
							ANALYST	DATE	
<b>ETO by EPA Method TO-15 QC Batch 195698</b>									
Bromofluorobenzene(Surrogate QC Std.)			EPA TO-15	9.8879	ppbV		KL	4/5/2022	8 to 12
Ethylene Oxide			EPA TO-15	0.0284	ppbV	SQ	0.0232	KL	4/5/2022
<b>ETO Results by EPA Method TO-15</b>									
Bromofluorobenzene(Surrogate QC Std.)			EPA TO-15	70.7283	ug/m3		KL	4/5/2022	57.22 to 85.84
Ethylene Oxide			EPA TO-15	0.0512	ug/m3	SQ	0.0418	KL	4/5/2022

COMMENTS: \$ETO received in the lab at 8 in Hg.

ug/L: micrograms/liter  
 mg/L: milligrams/liter  
 mg/kg: milligrams/kilogram  
 ug/kg: micrograms/kilogram  
 ug/g: micrograms/gram  
 ppm: parts per million  
 ppb: parts per billion  
 org/L: organisms/liter

<: less than  
 MCL: Maximum Contaminant Level  
 RL: Reporting Limit  
 LSPC: result less than lower specification  
 USPC: result greater than upper specification  
 TIE: Tentatively Identified or Estimated  
 VIOL: Violation (result exceeds MCL)

**Laboratory Contacts:**

Lab Director: Mark Tolbert 470-524-0577  
 Inorganics: Carmen Pyles 470-524-0629  
 Metals: Shene Jones 470-524-0544  
 Organics: Mary Bowman 470-524-0639  
 GC Mass Spec: Ralph Schulz 470-524-0684  
 Microbiology: Mary Bowman 470-524-0709

**GEORGIA DEPARTMENT OF NATURAL RESOURCES  
ENVIRONMENTAL PROTECTION DIVISION**

5804 Peachtree Corners East, Norcross, GA 30092-3403  
(678) 248-7384

**LABORATORY REPORT**

TO: Ga EPD Air Program EPD Air Prot Ambient Monitoring 4244 International Pkwy Ste 120 Atlanta, GA 30354	Date Collected: 3/18/2022 Time Collected: 0:00 Sample Collector: J. BRYANT Chlorination: Sample Type: Received By: HZ
	Date Received: 4/1/2022 Time Received: 11:18 AM Project: DATA STUDY Reporting Date: 5/24/2022 Received Temperature: 20.1 °C
Sample ID: AK95694 Facility Name: COBB S6-SA Site ID: S6-SA Location ID: Location Descr:	

ANALYTE	PARAMETER CODE	EPA NOTE	METHOD	RESULT	UNITS	QUALIFIER RL	ANALYSIS		MCL or QC Range
							ANALYST	DATE	
<b>ETO by EPA Method TO-15 QC Batch 195698</b>									
Bromofluorobenzene(Surrogate QC Std.)			EPA TO-15	9.6270	ppbV		KL	4/5/2022	8 to 12
Ethylene Oxide			EPA TO-15	0.7929	ppbV	0.0232	KL	4/5/2022	
<b>ETO Results by EPA Method TO-15</b>									
Bromofluorobenzene(Surrogate QC Std.)			EPA TO-15	68.862	ug/m3		KL	4/5/2022	57.22 to 85.84
Ethylene Oxide			EPA TO-15	1.4292	ug/m3	0.0418	KL	4/5/2022	

COMMENTS: \$ETO received in the lab at 5 in Hg.

ug/L: micrograms/liter  
 mg/L: milligrams/liter  
 mg/kg: milligrams/kilogram  
 ug/kg: micrograms/kilogram  
 ug/g: micrograms/gram  
 ppm: parts per million  
 ppb: parts per billion  
 org/L: organisms/liter

<: less than  
 MCL: Maximum Contaminant Level  
 RL: Reporting Limit  
 LSPC: result less than lower specification  
 USPC: result greater than upper specification  
 TIE: Tentatively Identified or Estimated  
 VIOL: Violation (result exceeds MCL)

**Laboratory Contacts:**

Lab Director: Mark Tolbert 470-524-0577  
 Inorganics: Carmen Pyles 470-524-0629  
 Metals: Shene Jones 470-524-0544  
 Organics: Mary Bowman 470-524-0639  
 GC Mass Spec: Ralph Schulz 470-524-0684  
 Microbiology: Mary Bowman 470-524-0709

**GEORGIA DEPARTMENT OF NATURAL RESOURCES  
ENVIRONMENTAL PROTECTION DIVISION**

5804 Peachtree Corners East, Norcross, GA 30092-3403  
(678) 248-7384

**LABORATORY REPORT**

TO: Ga EPD Air Program EPD Air Prot Ambient Monitoring 4244 International Pkwy Ste 120 Atlanta, GA 30354	Date Collected: 3/18/2022 Time Collected: 0:00 Sample Collector: J. BRYANT Chlorination: Sample Type: Received By: HZ
	Date Received: 4/1/2022 Time Received: 11:18 AM Project: DATA STUDY Reporting Date: 5/24/2022 Received Temperature: 19.0 °C
Sample ID: AK95695 Facility Name: COVINGTON C2 Site ID: C2 Location ID: Location Descr:	

ANALYTE	PARAMETER CODE	EPA NOTE	METHOD	RESULT	UNITS	QUALIFIER RL	ANALYSIS		MCL or QC Range
							ANALYST	DATE	
<b>ETO by EPA Method TO-15 QC Batch 195698</b>									
Bromofluorobenzene(Surrogate QC Std.)			EPA TO-15	9.6013	ppbV		KL	4/5/2022	8 to 12
Ethylene Oxide			EPA TO-15	0.0443	ppbV	SQ	0.0232	KL	4/5/2022
<b>ETO Results by EPA Method TO-15</b>									
Bromofluorobenzene(Surrogate QC Std.)			EPA TO-15	68.6782	ug/m3		KL	4/5/2022	57.22 to 85.84
Ethylene Oxide			EPA TO-15	0.0799	ug/m3	SQ	0.0418	KL	4/5/2022

COMMENTS: \$ETO received in the lab at 2 in Hg.

ug/L: micrograms/liter mg/L: milligrams/liter mg/kg: milligrams/kilogram ug/kg: micrograms/kilogram ug/g: micrograms/gram ppm: parts per million ppb: parts per billion org/L: organisms/liter	<: less than MCL: Maximum Contaminant Level RL: Reporting Limit LSPC: result less than lower specification USPC: result greater than upper specification TIE: Tentatively Identified or Estimated VIOL: Violation (result exceeds MCL)	<b>Laboratory Contacts:</b> Lab Director: Mark Tolbert 470-524-0577 Inorganics: Carmen Pyles 470-524-0629 Metals: Shene Jones 470-524-0544 Organics: Mary Bowman 470-524-0639 GC Mass Spec: Ralph Schulz 470-524-0684 Microbiology: Mary Bowman 470-524-0709
---	--	--

**GEORGIA DEPARTMENT OF NATURAL RESOURCES  
ENVIRONMENTAL PROTECTION DIVISION**

5804 Peachtree Corners East, Norcross, GA 30092-3403  
(678) 248-7384

**LABORATORY REPORT**

TO: Ga EPD Air Program EPD Air Prot Ambient Monitoring 4244 International Pkwy Ste 120 Atlanta, GA 30354	Date Collected: 3/12/2022 Time Collected: 0:00 Sample Collector: H. STREET Canister Number: 110307 Canister Cleaned: 2/21/2022 Received By: HZ
	Date Received: 3/15/2022 Time Received: 10:14 AM Project: AIR Reporting Date: 5/24/2022 Received Temperature: 20.6 °C
Sample ID: AK95696 Facility Name: SOUTH DEKALB Site ID: 013-089-0002 Location ID: Location Descr:	

ANALYTE	PARAMETER CODE	EPA NOTE	METHOD	RESULT	UNITS	QUALIFIER RL	ANALYSIS		MCL or QC Range
							ANALYST	DATE	
<b>ETO by EPA Method TO-15 QC Batch 195427</b>									
Bromofluorobenzene(Surrogate QC Std.)			EPA TO-15	9.6258	ppbV		KL	3/16/2022	8 to 12
Ethylene Oxide			EPA TO-15	0.0472	ppbV	SQ	0.0232	KL	3/16/2022
<b>ETO Results by EPA Method TO-15</b>									
Bromofluorobenzene(Surrogate QC Std.)			EPA TO-15	68.8535	ug/m3		KL	3/16/2022	57.22 to 85.84
Ethylene Oxide			EPA TO-15	0.0851	ug/m3	SQ	0.0418	KL	3/16/2022

COMMENTS: \$ETO received in the lab at 4.8 psi.

ug/L: micrograms/liter mg/L: milligrams/liter mg/kg: milligrams/kilogram ug/kg: micrograms/kilogram ug/g: micrograms/gram ppm: parts per million ppb: parts per billion org/L: organisms/liter	<: less than MCL: Maximum Contaminant Level RL: Reporting Limit LSPC: result less than lower specification USPC: result greater than upper specification TIE: Tentatively Identified or Estimated VIOL: Violation (result exceeds MCL)	<b>Laboratory Contacts:</b> Lab Director: Mark Tolbert 470-524-0577 Inorganics: Carmen Pyles 470-524-0629 Metals: Shene Jones 470-524-0544 Organics: Mary Bowman 470-524-0639 GC Mass Spec: Ralph Schulz 470-524-0684 Microbiology: Mary Bowman 470-524-0709
---	--	--

**GEORGIA DEPARTMENT OF NATURAL RESOURCES  
ENVIRONMENTAL PROTECTION DIVISION**

5804 Peachtree Corners East, Norcross, GA 30092-3403  
(678) 248-7384

**LABORATORY REPORT**

TO: Ga EPD Air Program EPD Air Prot Ambient Monitoring 4244 International Pkwy Ste 120 Atlanta, GA 30354	Date Collected: 3/18/2022 Time Collected: 0:00 Sample Collector: J. BRYANT Chlorination: Sample Type: Received By: HZ
	Date Received: 4/1/2022 Time Received: 11:18 AM Project: DATA STUDY Reporting Date: 5/24/2022 Received Temperature: 19.1 °C
Sample ID: AK95697 Facility Name: COBB S7-SA Site ID: S7-SA Location ID: Location Descr:	

ANALYTE	PARAMETER CODE	EPA NOTE	METHOD	RESULT	UNITS	QUALIFIER RL	ANALYSIS		MCL or QC Range
							ANALYST	DATE	
<b>ETO by EPA Method TO-15 QC Batch 195698</b>									
Bromofluorobenzene(Surrogate QC Std.)			EPA TO-15	9.6993	ppbV		KL	4/5/2022	8 to 12
Ethylene Oxide			EPA TO-15	0.1061	ppbV	0.0232	KL	4/5/2022	
<b>ETO Results by EPA Method TO-15</b>									
Bromofluorobenzene(Surrogate QC Std.)			EPA TO-15	69.3792	ug/m3		KL	4/5/2022	57.22 to 85.84
Ethylene Oxide			EPA TO-15	0.1913	ug/m3	0.0418	KL	4/5/2022	

COMMENTS: \$ETO received in the lab at 8 in Hg.

ug/L: micrograms/liter mg/L: milligrams/liter mg/kg: milligrams/kilogram ug/kg: micrograms/kilogram ug/g: micrograms/gram ppm: parts per million ppb: parts per billion org/L: organisms/liter	<: less than MCL: Maximum Contaminant Level RL: Reporting Limit LSPC: result less than lower specification USPC: result greater than upper specification TIE: Tentatively Identified or Estimated VIOL: Violation (result exceeds MCL)	<b>Laboratory Contacts:</b> Lab Director: Mark Tolbert 470-524-0577 Inorganics: Carmen Pyles 470-524-0629 Metals: Shene Jones 470-524-0544 Organics: Mary Bowman 470-524-0639 GC Mass Spec: Ralph Schulz 470-524-0684 Microbiology: Mary Bowman 470-524-0709
---	--	--

**GEORGIA DEPARTMENT OF NATURAL RESOURCES  
ENVIRONMENTAL PROTECTION DIVISION**

5804 Peachtree Corners East, Norcross, GA 30092-3403  
(678) 248-7384

**LABORATORY REPORT**

TO: Ga EPD Air Program EPD Air Prot Ambient Monitoring 4244 International Pkwy Ste 120 Atlanta, GA 30354	Date Collected: 3/6/2022 Time Collected: 0:00 Sample Collector: H. STREET Canister Number: 114322 Canister Cleaned: 2/21/2022 Received By: HZ
	Date Received: 3/8/2022 Time Received: 11:24 AM Project: AIR Reporting Date: 5/24/2022 Received Temperature: 20.9 °C
Sample ID: AK95698 Facility Name: SOUTH DEKALB QA Site ID: 013-089-0002 Location ID: Location Descr:	

ANALYTE	PARAMETER CODE	EPA NOTE	METHOD	RESULT	UNITS	QUALIFIER RL	ANALYSIS		MCL or QC Range
							ANALYST	DATE	
<b>ETO by EPA Method TO-15 QC Batch 195310</b>									
Bromofluorobenzene(Surrogate QC Std.)			EPA TO-15	9.4758	ppbV		KL	3/9/2022	8 to 12
Ethylene Oxide			EPA TO-15	0.0651	ppbV	SQ	0.0232	KL	3/9/2022
<b>ETO Results by EPA Method TO-15</b>									
Bromofluorobenzene(Surrogate QC Std.)			EPA TO-15	67.7805	ug/m3		KL	3/9/2022	57.22 to 85.84
Ethylene Oxide			EPA TO-15	0.1173	ug/m3	SQ	0.0418	KL	3/9/2022
<b>ETO NATTS QA Replicate Precision</b>									
Ethylene Oxide			EPA TO-15	8.15	%RPD		KL	3/10/2022	25
<b>ETO QA Replicate Result</b>									
Bromofluorobenzene(Surrogate QC Std.)			EPA TO-15	9.4138	ppbV		KL	3/9/2022	8 to 12
Ethylene Oxide			EPA TO-15	0.0600	ppbV	SQ		KL	3/9/2022

COMMENTS: \$ETO received in the lab at 5.2 psi.

ug/L: micrograms/liter  
 mg/L: milligrams/liter  
 mg/kg: milligrams/kilogram  
 ug/kg: micrograms/kilogram  
 ug/g: micrograms/gram  
 ppm: parts per million  
 ppb: parts per billion  
 org/L: organisms/liter

<: less than  
 MCL: Maximum Contaminant Level  
 RL: Reporting Limit  
 LSPC: result less than lower specification  
 USPC: result greater than upper specification  
 TIE: Tentatively Identified or Estimated  
 VIOL: Violation (result exceeds MCL)

**Laboratory Contacts:**

Lab Director: Mark Tolbert 470-524-0577  
 Inorganics: Carmen Pyles 470-524-0629  
 Metals: Shene Jones 470-524-0544  
 Organics: Mary Bowman 470-524-0639  
 GC Mass Spec: Ralph Schulz 470-524-0684  
 Microbiology: Mary Bowman 470-524-0709



**GEORGIA DEPARTMENT OF NATURAL RESOURCES  
ENVIRONMENTAL PROTECTION DIVISION**

5804 Peachtree Corners East, Norcross, GA 30092-3403  
(678) 248-7384

**LABORATORY REPORT**

TO: Ga EPD Air Program EPD Air Prot Ambient Monitoring 4244 International Pkwy Ste 120 Atlanta, GA 30354	Date Collected: 3/18/2022 Time Collected: 0:00 Sample Collector: J. BRYANT Chlorination: Sample Type: Received By: HZ
	Date Received: 4/1/2022 Time Received: 11:18 AM Project: DATA STUDY Reporting Date: 5/24/2022 Received Temperature: 23.5 °C
Sample ID: AK95699 Facility Name: COBB S2 Site ID: S2 Location ID: Location Descr:	

ANALYTE	PARAMETER CODE	EPA NOTE	METHOD	RESULT	UNITS	QUALIFIER RL	ANALYSIS		MCL or QC Range
							ANALYST	DATE	
<b>ETO by EPA Method TO-15 QC Batch 195698</b>									
Bromofluorobenzene(Surrogate QC Std.)			EPA TO-15	9.2786	ppbV		KL	4/6/2022	8 to 12
Ethylene Oxide			EPA TO-15	1.6274	ppbV	DI	0.0464	KL	4/6/2022
<b>ETO Results by EPA Method TO-15</b>									
Bromofluorobenzene(Surrogate QC Std.)			EPA TO-15	66.3699	ug/m3		KL	4/6/2022	57.22 to 85.84
Ethylene Oxide			EPA TO-15	2.9335	ug/m3	DI	0.0836	KL	4/6/2022

COMMENTS: \$ETO received in the lab at 7 in Hg.

COMMENTS: \$ETO - EPA TO-15 - <DI> Sample required dilution due to high levels of Ethylene Oxide, reporting limits elevated due to high levels of target compound in the sample.

COMMENTS: \$ETO-UGM3 - EPA TO-15 - <DI> Sample required dilution due to high levels of Ethylene Oxide, reporting limits elevated due to high levels of target compound in the sample.

ug/L: micrograms/liter  
 mg/L: milligrams/liter  
 mg/kg: milligrams/kilogram  
 ug/kg: micrograms/kilogram  
 ug/g: micrograms/gram  
 ppm: parts per million  
 ppb: parts per billion  
 org/L: organisms/liter

<: less than  
 MCL: Maximum Contaminant Level  
 RL: Reporting Limit  
 LSPC: result less than lower specification  
 USPC: result greater than upper specification  
 TIE: Tentatively Identified or Estimated  
 VIOL: Violation (result exceeds MCL)

**Laboratory Contacts:**

Lab Director: Mark Tolbert 470-524-0577  
 Inorganics: Carmen Pyles 470-524-0629  
 Metals: Shene Jones 470-524-0544  
 Organics: Mary Bowman 470-524-0639  
 GC Mass Spec: Ralph Schulz 470-524-0684  
 Microbiology: Mary Bowman 470-524-0709

**GEORGIA DEPARTMENT OF NATURAL RESOURCES  
ENVIRONMENTAL PROTECTION DIVISION**

5804 Peachtree Corners East, Norcross, GA 30092-3403  
(678) 248-7384

**LABORATORY REPORT**

TO: Ga EPD Air Program EPD Air Prot Ambient Monitoring 4244 International Pkwy Ste 120 Atlanta, GA 30354	Date Collected: 3/18/2022 Time Collected: 0:00 Sample Collector: J. BRYANT Chlorination: Sample Type: Received By: HZ
	Date Received: 4/1/2022 Time Received: 11:18 AM Project: DATA STUDY Reporting Date: 5/24/2022 Received Temperature: 19.7 °C
Sample ID: AK95704 Facility Name: FULTON F2 Site ID: F2 Location ID: Location Descr:	

ANALYTE	PARAMETER CODE	EPA NOTE	METHOD	RESULT	UNITS	QUALIFIER RL	ANALYSIS		MCL or QC Range
							ANALYST	DATE	
<b>ETO by EPA Method TO-15 QC Batch 195698</b>									
Bromofluorobenzene(Surrogate QC Std.)			EPA TO-15	9.3734	ppbV		KL	4/5/2022	8 to 12
Ethylene Oxide			EPA TO-15	1.0708	ppbV	0.0232	KL	4/5/2022	
<b>ETO Results by EPA Method TO-15</b>									
Bromofluorobenzene(Surrogate QC Std.)			EPA TO-15	67.048	ug/m3		KL	4/5/2022	57.22 to 85.84
Ethylene Oxide			EPA TO-15	1.9302	ug/m3	0.0418	KL	4/5/2022	

COMMENTS: \$ETO received in the lab at 5 in Hg.

ug/L: micrograms/liter  
 mg/L: milligrams/liter  
 mg/kg: milligrams/kilogram  
 ug/kg: micrograms/kilogram  
 ug/g: micrograms/gram  
 ppm: parts per million  
 ppb: parts per billion  
 org/L: organisms/liter

<: less than  
 MCL: Maximum Contaminant Level  
 RL: Reporting Limit  
 LSPC: result less than lower specification  
 USPC: result greater than upper specification  
 TIE: Tentatively Identified or Estimated  
 VIOL: Violation (result exceeds MCL)

**Laboratory Contacts:**

Lab Director: Mark Tolbert 470-524-0577  
 Inorganics: Carmen Pyles 470-524-0629  
 Metals: Shene Jones 470-524-0544  
 Organics: Mary Bowman 470-524-0639  
 GC Mass Spec: Ralph Schulz 470-524-0684  
 Microbiology: Mary Bowman 470-524-0709

**GEORGIA DEPARTMENT OF NATURAL RESOURCES  
ENVIRONMENTAL PROTECTION DIVISION**

5804 Peachtree Corners East, Norcross, GA 30092-3403  
(678) 248-7384

**LABORATORY REPORT**

TO: Ga EPD Air Program EPD Air Prot Ambient Monitoring 4244 International Pkwy Ste 120 Atlanta, GA 30354	Date Collected: 3/18/2022 Time Collected: 0:00 Sample Collector: C. KNOX Chlorination: Sample Type: Received By: HZ
	Date Received: 3/25/2022 Time Received: 8:46 AM Project: DATA STUDY Reporting Date: 5/24/2022 Received Temperature: 23.8 °C
Sample ID: AK95705 Facility Name: DOUGLAS - GENERAL COFFEE Site ID: 013-069-0002 Location ID: Location Descr:	

ANALYTE	PARAMETER CODE	EPA NOTE	METHOD	RESULT	UNITS	QUALIFIER RL	ANALYSIS		MCL or QC Range
							ANALYST	DATE	
<b>ETO by EPA Method TO-15 QC Batch 195606</b>									
Bromofluorobenzene(Surrogate QC Std.)			EPA TO-15	9.7929	ppbV		KL	3/29/2022	8 to 12
Ethylene Oxide			EPA TO-15	0.0407	ppbV	SQ	0.0232	KL	3/29/2022
<b>ETO Results by EPA Method TO-15</b>									
Bromofluorobenzene(Surrogate QC Std.)			EPA TO-15	70.0487	ug/m3		KL	3/29/2022	57.22 to 85.84
Ethylene Oxide			EPA TO-15	0.0734	ug/m3	SQ	0.0418	KL	3/29/2022

COMMENTS: \$ETO received in the lab at 22.6 psi.

ug/L: micrograms/liter mg/L: milligrams/liter mg/kg: milligrams/kilogram ug/kg: micrograms/kilogram ug/g: micrograms/gram ppm: parts per million ppb: parts per billion org/L: organisms/liter	<: less than MCL: Maximum Contaminant Level RL: Reporting Limit LSPC: result less than lower specification USPC: result greater than upper specification TIE: Tentatively Identified or Estimated VIOL: Violation (result exceeds MCL)	<b>Laboratory Contacts:</b> Lab Director: Mark Tolbert 470-524-0577 Inorganics: Carmen Pyles 470-524-0629 Metals: Shene Jones 470-524-0544 Organics: Mary Bowman 470-524-0639 GC Mass Spec: Ralph Schulz 470-524-0684 Microbiology: Mary Bowman 470-524-0709
---	--	--

**GEORGIA DEPARTMENT OF NATURAL RESOURCES  
ENVIRONMENTAL PROTECTION DIVISION**

5804 Peachtree Corners East, Norcross, GA 30092-3403  
(678) 248-7384

**LABORATORY REPORT**

TO: Ga EPD Air Program EPD Air Prot Ambient Monitoring 4244 International Pkwy Ste 120 Atlanta, GA 30354	Date Collected: 3/18/2022 Time Collected: 0:00 Sample Collector: J. BRYANT Chlorination: Sample Type: Received By: HZ
	Date Received: 4/1/2022 Time Received: 11:18 AM Project: DATA STUDY Reporting Date: 5/24/2022 Received Temperature: 24.5 °C
Sample ID: AK95706 Facility Name: COVINGTON C3-SA Site ID: C3-SA Location ID: Location Descr:	

ANALYTE	PARAMETER CODE	EPA NOTE	METHOD	RESULT	UNITS	QUALIFIER RL	ANALYSIS		MCL or QC Range
							ANALYST	DATE	
<b>ETO by EPA Method TO-15 QC Batch 195698</b>									
Bromofluorobenzene(Surrogate QC Std.)			EPA TO-15	9.4884	ppbV		KL	4/5/2022	8 to 12
Ethylene Oxide			EPA TO-15	0.0313	ppbV	SQ	0.0232	KL	4/5/2022
<b>ETO Results by EPA Method TO-15</b>									
Bromofluorobenzene(Surrogate QC Std.)			EPA TO-15	67.8706	ug/m3		KL	4/5/2022	57.22 to 85.84
Ethylene Oxide			EPA TO-15	0.0564	ug/m3	SQ	0.0418	KL	4/5/2022

COMMENTS: \$ETO received in the lab at 7 in Hg.

ug/L: micrograms/liter mg/L: milligrams/liter mg/kg: milligrams/kilogram ug/kg: micrograms/kilogram ug/g: micrograms/gram ppm: parts per million ppb: parts per billion org/L: organisms/liter	<: less than MCL: Maximum Contaminant Level RL: Reporting Limit LSPC: result less than lower specification USPC: result greater than upper specification TIE: Tentatively Identified or Estimated VIOL: Violation (result exceeds MCL)	<b>Laboratory Contacts:</b> Lab Director: Mark Tolbert 470-524-0577 Inorganics: Carmen Pyles 470-524-0629 Metals: Shene Jones 470-524-0544 Organics: Mary Bowman 470-524-0639 GC Mass Spec: Ralph Schulz 470-524-0684 Microbiology: Mary Bowman 470-524-0709
---	--	--

**GEORGIA DEPARTMENT OF NATURAL RESOURCES  
ENVIRONMENTAL PROTECTION DIVISION**

5804 Peachtree Corners East, Norcross, GA 30092-3403  
(678) 248-7384

**LABORATORY REPORT**

TO: Ga EPD Air Program EPD Air Prot Ambient Monitoring 4244 International Pkwy Ste 120 Atlanta, GA 30354	Date Collected: 3/10/2022 Time Collected: 13:15 Sample Collector: H. STREET Canister Number: 114344 Canister Cleaned: 3/2/2022 Received By: HZ
	Date Received: 3/15/2022 Time Received: 10:14 AM Project: AIR Reporting Date: 5/24/2022 Received Temperature: 20.4 °C
Sample ID: AK96177 Facility Name: SOUTH DEKALB timer Site ID: 013-089-0002 Location ID: QCCAN Location Descr:	

ANALYTE	PARAMETER CODE	EPA NOTE	METHOD	RESULT	UNITS	QUALIFIER RL	ANALYSIS		MCL or QC Range
							ANALYST	DATE	
<b>ETO by EPA Method TO-15 QC Batch 195427</b>									
Bromofluorobenzene(Surrogate QC Std.)			EPA TO-15	8.9019	ppbV		KL	3/16/2022	8 to 12
Ethylene Oxide			EPA TO-15	0.0335	ppbV	SQ	0.0232	KL	3/16/2022
<b>ETO Results by EPA Method TO-15</b>									
Bromofluorobenzene(Surrogate QC Std.)			EPA TO-15	63.6754	ug/m3		KL	3/16/2022	57.22 to 85.84
Ethylene Oxide			EPA TO-15	0.0604	ug/m3	SQ	0.0418	KL	3/16/2022

COMMENTS: \$ETO received in the lab at 4 in Hg.

ug/L: micrograms/liter  
 mg/L: milligrams/liter  
 mg/kg: milligrams/kilogram  
 ug/kg: micrograms/kilogram  
 ug/g: micrograms/gram  
 ppm: parts per million  
 ppb: parts per billion  
 org/L: organisms/liter

<: less than  
 MCL: Maximum Contaminant Level  
 RL: Reporting Limit  
 LSPC: result less than lower specification  
 USPC: result greater than upper specification  
 TIE: Tentatively Identified or Estimated  
 VIOL: Violation (result exceeds MCL)

**Laboratory Contacts:**

Lab Director: Mark Tolbert 470-524-0577  
 Inorganics: Carmen Pyles 470-524-0629  
 Metals: Shene Jones 470-524-0544  
 Organics: Mary Bowman 470-524-0639  
 GC Mass Spec: Ralph Schulz 470-524-0684  
 Microbiology: Mary Bowman 470-524-0709

**GEORGIA DEPARTMENT OF NATURAL RESOURCES  
ENVIRONMENTAL PROTECTION DIVISION**

5804 Peachtree Corners East, Norcross, GA 30092-3403  
(678) 248-7384

**LABORATORY REPORT**

TO: Ga EPD Air Program EPD Air Prot Ambient Monitoring 4244 International Pkwy Ste 120 Atlanta, GA 30354	Date Collected: 3/10/2022 Time Collected: 13:15 Sample Collector: H. STREET Canister Number: 114375 Canister Cleaned: 3/2/2022 Received By: HZ
	Date Received: 3/15/2022 Time Received: 10:14 AM Project: AIR Reporting Date: 5/24/2022 Received Temperature: 22.9 °C
Sample ID: AK96178 Facility Name: SOUTH DEKALB QA timer Site ID: 013-089-0002 Location ID: Location Descr:	

ANALYTE	PARAMETER CODE	EPA NOTE	METHOD	RESULT	UNITS	QUALIFIER RL	ANALYSIS		MCL or QC Range
							ANALYST	DATE	
<b>ETO by EPA Method TO-15 QC Batch 195427</b>									
Bromofluorobenzene(Surrogate QC Std.)			EPA TO-15	8.8417	ppbV		KL	3/16/2022	8 to 12
Ethylene Oxide			EPA TO-15	0.0459	ppbV	SQ	0.0232	KL	3/16/2022
<b>ETO Results by EPA Method TO-15</b>									
Bromofluorobenzene(Surrogate QC Std.)			EPA TO-15	63.2448	ug/m3		KL	3/16/2022	57.22 to 85.84
Ethylene Oxide			EPA TO-15	0.0827	ug/m3	SQ	0.0418	KL	3/16/2022

COMMENTS: \$ETO received in the lab at 5 in Hg.

ug/L: micrograms/liter  
 mg/L: milligrams/liter  
 mg/kg: milligrams/kilogram  
 ug/kg: micrograms/kilogram  
 ug/g: micrograms/gram  
 ppm: parts per million  
 ppb: parts per billion  
 org/L: organisms/liter

<: less than  
 MCL: Maximum Contaminant Level  
 RL: Reporting Limit  
 LSPC: result less than lower specification  
 USPC: result greater than upper specification  
 TIE: Tentatively Identified or Estimated  
 VIOL: Violation (result exceeds MCL)

**Laboratory Contacts:**

Lab Director: Mark Tolbert 470-524-0577  
 Inorganics: Carmen Pyles 470-524-0629  
 Metals: Shene Jones 470-524-0544  
 Organics: Mary Bowman 470-524-0639  
 GC Mass Spec: Ralph Schulz 470-524-0684  
 Microbiology: Mary Bowman 470-524-0709

**GEORGIA DEPARTMENT OF NATURAL RESOURCES  
ENVIRONMENTAL PROTECTION DIVISION**

5804 Peachtree Corners East, Norcross, GA 30092-3403  
(678) 248-7384

**LABORATORY REPORT**

TO: Ga EPD Air Program EPD Air Prot Ambient Monitoring 4244 International Pkwy Ste 120 Atlanta, GA 30354	Date Collected: 3/10/2022 Time Collected: 13:15 Sample Collector: H. STREET Canister Number: 114320 Canister Cleaned: 3/2/2022 Received By: HZ
	Date Received: 3/15/2022 Time Received: 10:14 AM Project: AIR Reporting Date: 5/24/2022 Received Temperature: 19.5 °C
Sample ID: AK96179 Facility Name: SOUTH DEKALB no timer Site ID: 013-089-0002 Location ID: Location Descr:	

ANALYTE	PARAMETER CODE	EPA NOTE	METHOD	RESULT	UNITS	QUALIFIER RL	ANALYSIS		MCL or QC Range
							ANALYST	DATE	
<b>ETO by EPA Method TO-15 QC Batch 195427</b>									
Bromofluorobenzene(Surrogate QC Std.)			EPA TO-15	9.3024	ppbV		KL	3/17/2022	8 to 12
Ethylene Oxide			EPA TO-15	0.0688	ppbV	SQ	0.0232	KL	3/17/2022
<b>ETO Results by EPA Method TO-15</b>									
Bromofluorobenzene(Surrogate QC Std.)			EPA TO-15	66.5402	ug/m3		KL	3/17/2022	57.22 to 85.84
Ethylene Oxide			EPA TO-15	0.124	ug/m3	SQ	0.0418	KL	3/17/2022

COMMENTS: \$ETO received in the lab at 5 in Hg.

ug/L: micrograms/liter mg/L: milligrams/liter mg/kg: milligrams/kilogram ug/kg: micrograms/kilogram ug/g: micrograms/gram ppm: parts per million ppb: parts per billion org/L: organisms/liter	<: less than MCL: Maximum Contaminant Level RL: Reporting Limit LSPC: result less than lower specification USPC: result greater than upper specification TIE: Tentatively Identified or Estimated VIOL: Violation (result exceeds MCL)	<b>Laboratory Contacts:</b> Lab Director: Mark Tolbert 470-524-0577 Inorganics: Carmen Pyles 470-524-0629 Metals: Shene Jones 470-524-0544 Organics: Mary Bowman 470-524-0639 GC Mass Spec: Ralph Schulz 470-524-0684 Microbiology: Mary Bowman 470-524-0709
---	--	--

**GEORGIA DEPARTMENT OF NATURAL RESOURCES  
ENVIRONMENTAL PROTECTION DIVISION**

5804 Peachtree Corners East, Norcross, GA 30092-3403  
(678) 248-7384

**LABORATORY REPORT**

TO: Ga EPD Air Program EPD Air Prot Ambient Monitoring 4244 International Pkwy Ste 120 Atlanta, GA 30354	Date Collected: 3/10/2022 Time Collected: 13:15 Sample Collector: H. STREET Canister Number: 114310 Canister Cleaned: 3/2/2022 Received By: HZ
	Date Received: 3/15/2022 Time Received: 10:14 AM Project: AIR Reporting Date: 5/24/2022 Received Temperature: 20.1 °C
Sample ID: AK96180 Facility Name: SOUTH DEKALB QA no timer Site ID: 013-089-0002 Location ID: Location Descr:	

ANALYTE	PARAMETER CODE	EPA NOTE	METHOD	RESULT	UNITS	QUALIFIER RL	ANALYSIS		MCL or QC Range
							ANALYST	DATE	
<b>ETO by EPA Method TO-15 QC Batch 195427</b>									
Bromofluorobenzene(Surrogate QC Std.)			EPA TO-15	9.2902	ppbV		KL	3/17/2022	8 to 12
Ethylene Oxide			EPA TO-15	0.0768	ppbV	0.0232	KL	3/17/2022	
<b>ETO Results by EPA Method TO-15</b>									
Bromofluorobenzene(Surrogate QC Std.)			EPA TO-15	66.4529	ug/m3		KL	3/17/2022	57.22 to 85.84
Ethylene Oxide			EPA TO-15	0.1384	ug/m3	0.0418	KL	3/17/2022	

COMMENTS: \$ETO received in the lab at 4 in Hg.

ug/L: micrograms/liter  
 mg/L: milligrams/liter  
 mg/kg: milligrams/kilogram  
 ug/kg: micrograms/kilogram  
 ug/g: micrograms/gram  
 ppm: parts per million  
 ppb: parts per billion  
 org/L: organisms/liter

<: less than  
 MCL: Maximum Contaminant Level  
 RL: Reporting Limit  
 LSPC: result less than lower specification  
 USPC: result greater than upper specification  
 TIE: Tentatively Identified or Estimated  
 VIOL: Violation (result exceeds MCL)

**Laboratory Contacts:**

Lab Director: Mark Tolbert 470-524-0577  
 Inorganics: Carmen Pyles 470-524-0629  
 Metals: Shene Jones 470-524-0544  
 Organics: Mary Bowman 470-524-0639  
 GC Mass Spec: Ralph Schulz 470-524-0684  
 Microbiology: Mary Bowman 470-524-0709



**GEORGIA DEPARTMENT OF NATURAL RESOURCES  
ENVIRONMENTAL PROTECTION DIVISION**

5804 Peachtree Corners East, Norcross, GA 30092-3403  
(678) 248-7384

**LABORATORY REPORT**

TO: Ga EPD Air Program EPD Air Prot Ambient Monitoring 4244 International Pkwy Ste 120 Atlanta, GA 30354	Date Collected: 3/14/2022 Time Collected: 11:45 Sample Collector: H. STREET Canister Number: 114341 Canister Cleaned: 3/2/2022 Received By: HZ
	Date Received: 3/16/2022 Time Received: 11:02 AM Project: AIR Reporting Date: 5/24/2022 Received Temperature: 19.6 °C
Sample ID: AK96181 Facility Name: SOUTH DEKALB timer Site ID: 013-089-0002 Location ID: Location Descr:	

ANALYTE	PARAMETER CODE	EPA NOTE	METHOD	RESULT	UNITS	QUALIFIER RL	ANALYSIS		MCL or QC Range
							ANALYST	DATE	
<b>ETO by EPA Method TO-15 QC Batch 195482</b>									
Bromofluorobenzene(Surrogate QC Std.)			EPA TO-15	9.6820	ppbV		KL	3/18/2022	8 to 12
Ethylene Oxide			EPA TO-15	0.0296	ppbV	SQ	0.0232	KL	3/18/2022
<b>ETO Results by EPA Method TO-15</b>									
Bromofluorobenzene(Surrogate QC Std.)			EPA TO-15	69.2555	ug/m3		KL	3/18/2022	57.22 to 85.84
Ethylene Oxide			EPA TO-15	0.0534	ug/m3	SQ	0.0418	KL	3/18/2022

COMMENTS: \$ETO received in the lab at 5 in Hg.

ug/L: micrograms/liter  
 mg/L: milligrams/liter  
 mg/kg: milligrams/kilogram  
 ug/kg: micrograms/kilogram  
 ug/g: micrograms/gram  
 ppm: parts per million  
 ppb: parts per billion  
 org/L: organisms/liter

<: less than  
 MCL: Maximum Contaminant Level  
 RL: Reporting Limit  
 LSPC: result less than lower specification  
 USPC: result greater than upper specification  
 TIE: Tentatively Identified or Estimated  
 VIOL: Violation (result exceeds MCL)

**Laboratory Contacts:**

Lab Director: Mark Tolbert 470-524-0577  
 Inorganics: Carmen Pyles 470-524-0629  
 Metals: Shene Jones 470-524-0544  
 Organics: Mary Bowman 470-524-0639  
 GC Mass Spec: Ralph Schulz 470-524-0684  
 Microbiology: Mary Bowman 470-524-0709

**GEORGIA DEPARTMENT OF NATURAL RESOURCES  
ENVIRONMENTAL PROTECTION DIVISION**

5804 Peachtree Corners East, Norcross, GA 30092-3403  
(678) 248-7384

**LABORATORY REPORT**

TO: Ga EPD Air Program EPD Air Prot Ambient Monitoring 4244 International Pkwy Ste 120 Atlanta, GA 30354	Date Collected: 3/14/2022 Time Collected: 11:45 Sample Collector: H. STREET Canister Number: 110337 Canister Cleaned: 3/2/2022 Received By: HZ
	Date Received: 3/16/2022 Time Received: 11:02 AM Project: AIR Reporting Date: 5/24/2022 Received Temperature: 23.5 °C
Sample ID: AK96182 Facility Name: SOUTH DEKALB QA timer Site ID: 013-089-0002 Location ID: Location Descr:	

ANALYTE	PARAMETER CODE	EPA NOTE	METHOD	RESULT	UNITS	QUALIFIER RL	ANALYSIS		MCL or QC Range
							ANALYST	DATE	
<b>ETO by EPA Method TO-15 QC Batch 195482</b>									
Bromofluorobenzene(Surrogate QC Std.)			EPA TO-15	9.4626	ppbV		KL	3/18/2022	8 to 12
Ethylene Oxide			EPA TO-15	0.0673	ppbV	SQ	0.0232	KL	3/18/2022
<b>ETO Results by EPA Method TO-15</b>									
Bromofluorobenzene(Surrogate QC Std.)			EPA TO-15	67.6861	ug/m3		KL	3/18/2022	57.22 to 85.84
Ethylene Oxide			EPA TO-15	0.1213	ug/m3	SQ	0.0418	KL	3/18/2022

COMMENTS: \$ETO received in the lab at 5 in Hg.

ug/L: micrograms/liter mg/L: milligrams/liter mg/kg: milligrams/kilogram ug/kg: micrograms/kilogram ug/g: micrograms/gram ppm: parts per million ppb: parts per billion org/L: organisms/liter	<: less than MCL: Maximum Contaminant Level RL: Reporting Limit LSPC: result less than lower specification USPC: result greater than upper specification TIE: Tentatively Identified or Estimated VIOL: Violation (result exceeds MCL)	<b>Laboratory Contacts:</b> Lab Director: Mark Tolbert 470-524-0577 Inorganics: Carmen Pyles 470-524-0629 Metals: Shene Jones 470-524-0544 Organics: Mary Bowman 470-524-0639 GC Mass Spec: Ralph Schulz 470-524-0684 Microbiology: Mary Bowman 470-524-0709
---	--	--

**GEORGIA DEPARTMENT OF NATURAL RESOURCES  
ENVIRONMENTAL PROTECTION DIVISION**

5804 Peachtree Corners East, Norcross, GA 30092-3403  
(678) 248-7384

**LABORATORY REPORT**

TO: Ga EPD Air Program EPD Air Prot Ambient Monitoring 4244 International Pkwy Ste 120 Atlanta, GA 30354	Date Collected: 3/14/2022 Time Collected: 11:45 Sample Collector: H. STREET Canister Number: 114392 Canister Cleaned: 3/2/2022 Received By: HZ
	Date Received: 3/16/2022 Time Received: 11:02 AM Project: AIR Reporting Date: 5/24/2022 Received Temperature: 21.5 °C
Sample ID: AK96183 Facility Name: SOUTH DEKALB no timer Site ID: 013-089-0002 Location ID: Location Descr:	

ANALYTE	PARAMETER CODE	EPA NOTE	METHOD	RESULT	UNITS	QUALIFIER RL	ANALYSIS		MCL or QC Range
							ANALYST	DATE	
<b>ETO by EPA Method TO-15 QC Batch 195482</b>									
Bromofluorobenzene(Surrogate QC Std.)			EPA TO-15	9.0448	ppbV		KL	3/18/2022	8 to 12
Ethylene Oxide			EPA TO-15	0.0409	ppbV	SQ	0.0232	KL	3/18/2022
<b>ETO Results by EPA Method TO-15</b>									
Bromofluorobenzene(Surrogate QC Std.)			EPA TO-15	64.6976	ug/m3		KL	3/18/2022	57.22 to 85.84
Ethylene Oxide			EPA TO-15	0.0737	ug/m3	SQ	0.0418	KL	3/18/2022

COMMENTS: \$ETO received in the lab at 5 in Hg.

ug/L: micrograms/liter  
 mg/L: milligrams/liter  
 mg/kg: milligrams/kilogram  
 ug/kg: micrograms/kilogram  
 ug/g: micrograms/gram  
 ppm: parts per million  
 ppb: parts per billion  
 org/L: organisms/liter

<: less than  
 MCL: Maximum Contaminant Level  
 RL: Reporting Limit  
 LSPC: result less than lower specification  
 USPC: result greater than upper specification  
 TIE: Tentatively Identified or Estimated  
 VIOL: Violation (result exceeds MCL)

**Laboratory Contacts:**

Lab Director: Mark Tolbert 470-524-0577  
 Inorganics: Carmen Pyles 470-524-0629  
 Metals: Shene Jones 470-524-0544  
 Organics: Mary Bowman 470-524-0639  
 GC Mass Spec: Ralph Schulz 470-524-0684  
 Microbiology: Mary Bowman 470-524-0709

**GEORGIA DEPARTMENT OF NATURAL RESOURCES  
ENVIRONMENTAL PROTECTION DIVISION**

5804 Peachtree Corners East, Norcross, GA 30092-3403  
(678) 248-7384

**LABORATORY REPORT**

TO: Ga EPD Air Program EPD Air Prot Ambient Monitoring 4244 International Pkwy Ste 120 Atlanta, GA 30354	Date Collected: 3/14/2022 Time Collected: 11:45 Sample Collector: H. STREET Canister Number: 114331 Canister Cleaned: 3/2/2022 Received By: HZ
	Date Received: 3/16/2022 Time Received: 11:02 AM Project: AIR Reporting Date: 5/24/2022 Received Temperature: 24.1 °C
Sample ID: AK96184 Facility Name: SOUTH DEKALB QA no timer Site ID: 013-089-0002 Location ID: Location Descr:	

ANALYTE	PARAMETER CODE	EPA NOTE	METHOD	RESULT	UNITS	QUALIFIER RL	ANALYSIS		MCL or QC Range
							ANALYST	DATE	
<b>ETO by EPA Method TO-15 QC Batch 195482</b>									
Bromofluorobenzene(Surrogate QC Std.)			EPA TO-15	9.1250	ppbV		KL	3/18/2022	8 to 12
Ethylene Oxide			EPA TO-15	0.0526	ppbV	SQ	0.0232	KL	3/18/2022
<b>ETO Results by EPA Method TO-15</b>									
Bromofluorobenzene(Surrogate QC Std.)			EPA TO-15	65.2712	ug/m3		KL	3/18/2022	57.22 to 85.84
Ethylene Oxide			EPA TO-15	0.0948	ug/m3	SQ	0.0418	KL	3/18/2022

COMMENTS: \$ETO received in the lab at 3.5 in Hg.

ug/L: micrograms/liter mg/L: milligrams/liter mg/kg: milligrams/kilogram ug/kg: micrograms/kilogram ug/g: micrograms/gram ppm: parts per million ppb: parts per billion org/L: organisms/liter	<: less than MCL: Maximum Contaminant Level RL: Reporting Limit LSPC: result less than lower specification USPC: result greater than upper specification TIE: Tentatively Identified or Estimated VIOL: Violation (result exceeds MCL)	<b>Laboratory Contacts:</b> Lab Director: Mark Tolbert 470-524-0577 Inorganics: Carmen Pyles 470-524-0629 Metals: Shene Jones 470-524-0544 Organics: Mary Bowman 470-524-0639 GC Mass Spec: Ralph Schulz 470-524-0684 Microbiology: Mary Bowman 470-524-0709
---	--	--

**GEORGIA DEPARTMENT OF NATURAL RESOURCES  
ENVIRONMENTAL PROTECTION DIVISION**

5804 Peachtree Corners East, Norcross, GA 30092-3403  
(678) 248-7384

**LABORATORY REPORT**

TO: Ga EPD Air Program EPD Air Prot Ambient Monitoring 4244 International Pkwy Ste 120 Atlanta, GA 30354	Date Collected: 3/16/2022 Time Collected: 9:20 Sample Collector: H. STREET Canister Number: 110325 Canister Cleaned: 3/8/2022 Received By: HZ
	Date Received: 3/22/2022 Time Received: 11:51 AM Project: AIR Reporting Date: 5/24/2022 Received Temperature: 21.7 °C
Sample ID: AK96295 Facility Name: SOUTH DEKALB timer Site ID: 013-089-0002 Location ID: Location Descr:	

ANALYTE	PARAMETER CODE	EPA NOTE	METHOD	RESULT	UNITS	QUALIFIER RL	ANALYSIS		MCL or QC Range
							ANALYST	DATE	
<b>ETO by EPA Method TO-15 QC Batch 195515</b>									
Bromofluorobenzene(Surrogate QC Std.)			EPA TO-15	9.4678	ppbV		KL	3/22/2022	8 to 12
Ethylene Oxide			EPA TO-15	0.0398	ppbV	SQ	0.0232	KL	3/22/2022
<b>ETO Results by EPA Method TO-15</b>									
Bromofluorobenzene(Surrogate QC Std.)			EPA TO-15	67.7233	ug/m3		KL	3/22/2022	57.22 to 85.84
Ethylene Oxide			EPA TO-15	0.0717	ug/m3	SQ	0.0418	KL	3/22/2022

COMMENTS: \$ETO received in the lab at 5 in Hg.

ug/L: micrograms/liter mg/L: milligrams/liter mg/kg: milligrams/kilogram ug/kg: micrograms/kilogram ug/g: micrograms/gram ppm: parts per million ppb: parts per billion org/L: organisms/liter	<: less than MCL: Maximum Contaminant Level RL: Reporting Limit LSPC: result less than lower specification USPC: result greater than upper specification TIE: Tentatively Identified or Estimated VIOL: Violation (result exceeds MCL)	<b>Laboratory Contacts:</b> Lab Director: Mark Tolbert 470-524-0577 Inorganics: Carmen Pyles 470-524-0629 Metals: Shene Jones 470-524-0544 Organics: Mary Bowman 470-524-0639 GC Mass Spec: Ralph Schulz 470-524-0684 Microbiology: Mary Bowman 470-524-0709
---	--	--

**GEORGIA DEPARTMENT OF NATURAL RESOURCES  
ENVIRONMENTAL PROTECTION DIVISION**

5804 Peachtree Corners East, Norcross, GA 30092-3403  
(678) 248-7384

**LABORATORY REPORT**

TO: Ga EPD Air Program EPD Air Prot Ambient Monitoring 4244 International Pkwy Ste 120 Atlanta, GA 30354	Date Collected: 3/16/2022 Time Collected: 9:20 Sample Collector: H. STREET Canister Number: 110255 Canister Cleaned: 3/8/2022 Received By: HZ
	Date Received: 3/22/2022 Time Received: 11:51 AM Project: AIR Reporting Date: 5/24/2022 Received Temperature: 20.9 °C
Sample ID: AK96296 Facility Name: SOUTH DEKALB QA timer Site ID: 013-089-0002 Location ID: Location Descr:	

ANALYTE	PARAMETER CODE	EPA NOTE	METHOD	RESULT	UNITS	QUALIFIER RL	ANALYSIS		MCL or QC Range
							ANALYST	DATE	
<b>ETO by EPA Method TO-15 QC Batch 195515</b>									
Bromofluorobenzene(Surrogate QC Std.)			EPA TO-15	9.4466	ppbV		KL	3/22/2022	8 to 12
Ethylene Oxide			EPA TO-15	0.0520	ppbV	SQ	0.0232	KL	3/22/2022
<b>ETO Results by EPA Method TO-15</b>									
Bromofluorobenzene(Surrogate QC Std.)			EPA TO-15	67.5716	ug/m3		KL	3/22/2022	57.22 to 85.84
Ethylene Oxide			EPA TO-15	0.0937	ug/m3	SQ	0.0418	KL	3/22/2022

COMMENTS: \$ETO received in the lab at 5 in Hg.

ug/L: micrograms/liter  
 mg/L: milligrams/liter  
 mg/kg: milligrams/kilogram  
 ug/kg: micrograms/kilogram  
 ug/g: micrograms/gram  
 ppm: parts per million  
 ppb: parts per billion  
 org/L: organisms/liter

<: less than  
 MCL: Maximum Contaminant Level  
 RL: Reporting Limit  
 LSPC: result less than lower specification  
 USPC: result greater than upper specification  
 TIE: Tentatively Identified or Estimated  
 VIOL: Violation (result exceeds MCL)

**Laboratory Contacts:**

Lab Director: Mark Tolbert 470-524-0577  
 Inorganics: Carmen Pyles 470-524-0629  
 Metals: Shene Jones 470-524-0544  
 Organics: Mary Bowman 470-524-0639  
 GC Mass Spec: Ralph Schulz 470-524-0684  
 Microbiology: Mary Bowman 470-524-0709

**GEORGIA DEPARTMENT OF NATURAL RESOURCES  
ENVIRONMENTAL PROTECTION DIVISION**

5804 Peachtree Corners East, Norcross, GA 30092-3403  
(678) 248-7384

**LABORATORY REPORT**

TO: Ga EPD Air Program EPD Air Prot Ambient Monitoring 4244 International Pkwy Ste 120 Atlanta, GA 30354	Date Collected: 3/16/2022 Time Collected: 9:20 Sample Collector: H. STREET Canister Number: 110343 Canister Cleaned: 3/8/2022 Received By: HZ
	Date Received: 3/22/2022 Time Received: 11:51 AM Project: AIR Reporting Date: 5/24/2022 Received Temperature: 21.7 °C
Sample ID: AK96297 Facility Name: SOUTH DEKALB no timer Site ID: 013-089-0002 Location ID: Location Descr:	

ANALYTE	PARAMETER CODE	EPA NOTE	METHOD	RESULT	UNITS	QUALIFIER RL	ANALYSIS		MCL or QC Range
							ANALYST	DATE	
<b>ETO by EPA Method TO-15 QC Batch 195515</b>									
Bromofluorobenzene(Surrogate QC Std.)			EPA TO-15	9.2010	ppbV		KL	3/22/2022	8 to 12
Ethylene Oxide			EPA TO-15	0.0434	ppbV	SQ	0.0232	KL	3/22/2022
<b>ETO Results by EPA Method TO-15</b>									
Bromofluorobenzene(Surrogate QC Std.)			EPA TO-15	65.8149	ug/m3		KL	3/22/2022	57.22 to 85.84
Ethylene Oxide			EPA TO-15	0.0782	ug/m3	SQ	0.0418	KL	3/22/2022

COMMENTS: \$ETO received in the lab at 5 in Hg.

ug/L: micrograms/liter  
 mg/L: milligrams/liter  
 mg/kg: milligrams/kilogram  
 ug/kg: micrograms/kilogram  
 ug/g: micrograms/gram  
 ppm: parts per million  
 ppb: parts per billion  
 org/L: organisms/liter

<: less than  
 MCL: Maximum Contaminant Level  
 RL: Reporting Limit  
 LSPC: result less than lower specification  
 USPC: result greater than upper specification  
 TIE: Tentatively Identified or Estimated  
 VIOL: Violation (result exceeds MCL)

**Laboratory Contacts:**

Lab Director: Mark Tolbert 470-524-0577  
 Inorganics: Carmen Pyles 470-524-0629  
 Metals: Shene Jones 470-524-0544  
 Organics: Mary Bowman 470-524-0639  
 GC Mass Spec: Ralph Schulz 470-524-0684  
 Microbiology: Mary Bowman 470-524-0709

**GEORGIA DEPARTMENT OF NATURAL RESOURCES  
ENVIRONMENTAL PROTECTION DIVISION**

5804 Peachtree Corners East, Norcross, GA 30092-3403  
(678) 248-7384

**LABORATORY REPORT**

TO: Ga EPD Air Program EPD Air Prot Ambient Monitoring 4244 International Pkwy Ste 120 Atlanta, GA 30354	Date Collected: 3/16/2022 Time Collected: 9:20 Sample Collector: H. STREET Canister Number: 86335 Canister Cleaned: 3/8/2022 Received By: HZ
	Date Received: 3/22/2022 Time Received: 11:51 AM Project: AIR Reporting Date: 5/24/2022 Received Temperature: 20.3 °C
Sample ID: AK96298 Facility Name: SOUTH DEKALB QA no timer Site ID: 013-089-0002 Location ID: Location Descr:	

ANALYTE	PARAMETER CODE	EPA NOTE	METHOD	RESULT	UNITS	QUALIFIER RL	ANALYSIS		MCL or QC Range
							ANALYST	DATE	
<b>ETO by EPA Method TO-15 QC Batch 195515</b>									
Bromofluorobenzene(Surrogate QC Std.)			EPA TO-15	9.2713	ppbV		KL	3/22/2022	8 to 12
Ethylene Oxide			EPA TO-15	0.0579	ppbV	SQ	0.0232	KL	3/22/2022
<b>ETO Results by EPA Method TO-15</b>									
Bromofluorobenzene(Surrogate QC Std.)			EPA TO-15	66.3177	ug/m3		KL	3/22/2022	57.22 to 85.84
Ethylene Oxide			EPA TO-15	0.1044	ug/m3	SQ	0.0418	KL	3/22/2022

COMMENTS: \$ETO received in the lab at 3 in Hg.

ug/L: micrograms/liter mg/L: milligrams/liter mg/kg: milligrams/kilogram ug/kg: micrograms/kilogram ug/g: micrograms/gram ppm: parts per million ppb: parts per billion org/L: organisms/liter	<: less than MCL: Maximum Contaminant Level RL: Reporting Limit LSPC: result less than lower specification USPC: result greater than upper specification TIE: Tentatively Identified or Estimated VIOL: Violation (result exceeds MCL)	<b>Laboratory Contacts:</b> Lab Director: Mark Tolbert 470-524-0577 Inorganics: Carmen Pyles 470-524-0629 Metals: Shene Jones 470-524-0544 Organics: Mary Bowman 470-524-0639 GC Mass Spec: Ralph Schulz 470-524-0684 Microbiology: Mary Bowman 470-524-0709
---	--	--



**GEORGIA DEPARTMENT OF NATURAL RESOURCES  
ENVIRONMENTAL PROTECTION DIVISION**

5804 Peachtree Corners East, Norcross, GA 30092-3403  
(678) 248-7384

**LABORATORY REPORT**

TO: Ga EPD Air Program EPD Air Prot Ambient Monitoring 4244 International Pkwy Ste 120 Atlanta, GA 30354	Date Collected: 3/29/2022 Time Collected: 0:00 Sample Collector: J. BRYANT Chlorination: Sample Type: Received By: HZ
	Date Received: 4/13/2022 Time Received: 11:51 AM Project: DATA STUDY Reporting Date: 5/24/2022 Received Temperature: 24.5 °C
Sample ID: AK96405 Facility Name: COBB S2 FB Site ID: S2 Location ID: Location Descr:	

ANALYTE	PARAMETER CODE	EPA NOTE	METHOD	RESULT	UNITS	QUALIFIER RL	ANALYSIS		MCL or QC Range
							ANALYST	DATE	
<b>ETO by EPA Method TO-15 QC Batch 195920</b>									
Bromofluorobenzene(Surrogate QC Std.)			EPA TO-15	9.9601	ppbV		KL	4/19/2022	8 to 12
Ethylene Oxide			EPA TO-15	0	ppbV	ND	0.0232	KL	4/19/2022
<b>ETO Results by EPA Method TO-15</b>									
Bromofluorobenzene(Surrogate QC Std.)			EPA TO-15	71.2447	ug/m3		KL	4/19/2022	57.22 to 85.84
Ethylene Oxide			EPA TO-15	0	ug/m3	ND	0.0418	KL	4/19/2022

COMMENTS: \$ETO received in the lab at 29 in Hg.

ug/L: micrograms/liter  
 mg/L: milligrams/liter  
 mg/kg: milligrams/kilogram  
 ug/kg: micrograms/kilogram  
 ug/g: micrograms/gram  
 ppm: parts per million  
 ppb: parts per billion  
 org/L: organisms/liter

<: less than  
 MCL: Maximum Contaminant Level  
 RL: Reporting Limit  
 LSPC: result less than lower specification  
 USPC: result greater than upper specification  
 TIE: Tentatively Identified or Estimated  
 VIOL: Violation (result exceeds MCL)

**Laboratory Contacts:**

Lab Director: Mark Tolbert 470-524-0577  
 Inorganics: Carmen Pyles 470-524-0629  
 Metals: Shene Jones 470-524-0544  
 Organics: Mary Bowman 470-524-0639  
 GC Mass Spec: Ralph Schulz 470-524-0684  
 Microbiology: Mary Bowman 470-524-0709

**GEORGIA DEPARTMENT OF NATURAL RESOURCES  
ENVIRONMENTAL PROTECTION DIVISION**

5804 Peachtree Corners East, Norcross, GA 30092-3403  
(678) 248-7384

**LABORATORY REPORT**

TO: Ga EPD Air Program EPD Air Prot Ambient Monitoring 4244 International Pkwy Ste 120 Atlanta, GA 30354	Date Collected: 3/30/2022 Time Collected: 0:00 Sample Collector: J. BRYANT Chlorination: Sample Type: Received By: HZ
	Date Received: 4/13/2022 Time Received: 11:51 AM Project: DATA STUDY Reporting Date: 5/24/2022 Received Temperature: 22.9 °C
Sample ID: AK96406 Facility Name: COBB S2 Site ID: S2 Location ID: Location Descr:	

ANALYTE	PARAMETER CODE	EPA NOTE	METHOD	RESULT	UNITS	QUALIFIER RL	ANALYSIS		MCL or QC Range
							ANALYST	DATE	
<b>ETO by EPA Method TO-15 QC Batch 195920</b>									
Bromofluorobenzene(Surrogate QC Std.)			EPA TO-15	9.6095	ppbV		KL	4/19/2022	8 to 12
Ethylene Oxide			EPA TO-15	0.0358	ppbV	SQ	0.0232	KL	4/19/2022
<b>ETO Results by EPA Method TO-15</b>									
Bromofluorobenzene(Surrogate QC Std.)			EPA TO-15	68.7369	ug/m3		KL	4/19/2022	57.22 to 85.84
Ethylene Oxide			EPA TO-15	0.0645	ug/m3	SQ	0.0418	KL	4/19/2022

COMMENTS: \$ETO received in the lab at 5 in Hg.

ug/L: micrograms/liter  
 mg/L: milligrams/liter  
 mg/kg: milligrams/kilogram  
 ug/kg: micrograms/kilogram  
 ug/g: micrograms/gram  
 ppm: parts per million  
 ppb: parts per billion  
 org/L: organisms/liter

<: less than  
 MCL: Maximum Contaminant Level  
 RL: Reporting Limit  
 LSPC: result less than lower specification  
 USPC: result greater than upper specification  
 TIE: Tentatively Identified or Estimated  
 VIOL: Violation (result exceeds MCL)

**Laboratory Contacts:**

Lab Director: Mark Tolbert 470-524-0577  
 Inorganics: Carmen Pyles 470-524-0629  
 Metals: Shene Jones 470-524-0544  
 Organics: Mary Bowman 470-524-0639  
 GC Mass Spec: Ralph Schulz 470-524-0684  
 Microbiology: Mary Bowman 470-524-0709

**GEORGIA DEPARTMENT OF NATURAL RESOURCES  
ENVIRONMENTAL PROTECTION DIVISION**

5804 Peachtree Corners East, Norcross, GA 30092-3403  
(678) 248-7384

**LABORATORY REPORT**

TO: Ga EPD Air Program EPD Air Prot Ambient Monitoring 4244 International Pkwy Ste 120 Atlanta, GA 30354	Date Collected: 3/28/2022 Time Collected: 0:00 Sample Collector: J. BRYANT Chlorination: Sample Type: Received By: HZ
	Date Received: 4/14/2022 Time Received: 11:50 AM Project: DATA STUDY Reporting Date: 5/24/2022 Received Temperature: 21.6 °C
Sample ID: AK96407 Facility Name: COVINGTON C2 FB Site ID: C2 Location ID: Location Descr:	

ANALYTE	PARAMETER CODE	EPA NOTE	METHOD	RESULT	UNITS	QUALIFIER RL	ANALYSIS		MCL or QC Range
							ANALYST	DATE	
<b>ETO by EPA Method TO-15 QC Batch 195920</b>									
Bromofluorobenzene(Surrogate QC Std.)			EPA TO-15	9.7457	ppbV		KL	4/19/2022	8 to 12
Ethylene Oxide			EPA TO-15	0	ppbV	ND	0.0232	KL	4/19/2022
<b>ETO Results by EPA Method TO-15</b>									
Bromofluorobenzene(Surrogate QC Std.)			EPA TO-15	69.7111	ug/m3		KL	4/19/2022	57.22 to 85.84
Ethylene Oxide			EPA TO-15	0	ug/m3	ND	0.0418	KL	4/19/2022

COMMENTS: \$ETO received in the lab at 29 in Hg.

ug/L: micrograms/liter  
 mg/L: milligrams/liter  
 mg/kg: milligrams/kilogram  
 ug/kg: micrograms/kilogram  
 ug/g: micrograms/gram  
 ppm: parts per million  
 ppb: parts per billion  
 org/L: organisms/liter

<: less than  
 MCL: Maximum Contaminant Level  
 RL: Reporting Limit  
 LSPC: result less than lower specification  
 USPC: result greater than upper specification  
 TIE: Tentatively Identified or Estimated  
 VIOL: Violation (result exceeds MCL)

**Laboratory Contacts:**

Lab Director: Mark Tolbert 470-524-0577  
 Inorganics: Carmen Pyles 470-524-0629  
 Metals: Shene Jones 470-524-0544  
 Organics: Mary Bowman 470-524-0639  
 GC Mass Spec: Ralph Schulz 470-524-0684  
 Microbiology: Mary Bowman 470-524-0709

**GEORGIA DEPARTMENT OF NATURAL RESOURCES  
ENVIRONMENTAL PROTECTION DIVISION**

5804 Peachtree Corners East, Norcross, GA 30092-3403  
(678) 248-7384

**LABORATORY REPORT**

TO: Ga EPD Air Program EPD Air Prot Ambient Monitoring 4244 International Pkwy Ste 120 Atlanta, GA 30354	Date Collected: 3/30/2022 Time Collected: 0:00 Sample Collector: J. BRYANT Chlorination: Sample Type: Received By: HZ
	Date Received: 4/14/2022 Time Received: 11:51 AM Project: DATA STUDY Reporting Date: 5/24/2022 Received Temperature: 23.2 °C
Sample ID: AK96408 Facility Name: COVINGTON C2 Site ID: C2 Location ID: Location Descr:	

ANALYTE	PARAMETER CODE	EPA NOTE	METHOD	RESULT	UNITS	QUALIFIER RL	ANALYSIS		MCL or QC Range
							ANALYST	DATE	
<b>ETO by EPA Method TO-15 QC Batch 195920</b>									
Bromofluorobenzene(Surrogate QC Std.)			EPA TO-15	9.1754	ppbV		KL	4/19/2022	8 to 12
Ethylene Oxide			EPA TO-15	0.0773	ppbV	0.0232	KL	4/19/2022	
<b>ETO Results by EPA Method TO-15</b>									
Bromofluorobenzene(Surrogate QC Std.)			EPA TO-15	65.6317	ug/m3		KL	4/19/2022	57.22 to 85.84
Ethylene Oxide			EPA TO-15	0.1393	ug/m3	0.0418	KL	4/19/2022	

COMMENTS: \$ETO received in the lab at 8 in Hg.

ug/L: micrograms/liter  
 mg/L: milligrams/liter  
 mg/kg: milligrams/kilogram  
 ug/kg: micrograms/kilogram  
 ug/g: micrograms/gram  
 ppm: parts per million  
 ppb: parts per billion  
 org/L: organisms/liter

<: less than  
 MCL: Maximum Contaminant Level  
 RL: Reporting Limit  
 LSPC: result less than lower specification  
 USPC: result greater than upper specification  
 TIE: Tentatively Identified or Estimated  
 VIOL: Violation (result exceeds MCL)

**Laboratory Contacts:**

Lab Director: Mark Tolbert 470-524-0577  
 Inorganics: Carmen Pyles 470-524-0629  
 Metals: Shene Jones 470-524-0544  
 Organics: Mary Bowman 470-524-0639  
 GC Mass Spec: Ralph Schulz 470-524-0684  
 Microbiology: Mary Bowman 470-524-0709

**GEORGIA DEPARTMENT OF NATURAL RESOURCES  
ENVIRONMENTAL PROTECTION DIVISION**

5804 Peachtree Corners East, Norcross, GA 30092-3403  
(678) 248-7384

**LABORATORY REPORT**

TO: Ga EPD Air Program EPD Air Prot Ambient Monitoring 4244 International Pkwy Ste 120 Atlanta, GA 30354	Date Collected: 3/30/2022 Time Collected: 0:00 Sample Collector: J. BRYANT Chlorination: Sample Type: Received By: HZ
	Date Received: 4/14/2022 Time Received: 11:51 AM Project: DATA STUDY Reporting Date: 5/24/2022 Received Temperature: 21.9 °C
Sample ID: AK96409 Facility Name: FULTON F2 Site ID: F2 Location ID: Location Descr:	

ANALYTE	PARAMETER CODE	EPA NOTE	METHOD	RESULT	UNITS	QUALIFIER RL	ANALYSIS		MCL or QC Range
							ANALYST	DATE	
<b>ETO by EPA Method TO-15 QC Batch 195920</b>									
Bromofluorobenzene(Surrogate QC Std.)			EPA TO-15	9.4586	ppbV		KL	4/19/2022	8 to 12
Ethylene Oxide			EPA TO-15	0.0565	ppbV	SQ	0.0232	KL	4/19/2022
<b>ETO Results by EPA Method TO-15</b>									
Bromofluorobenzene(Surrogate QC Std.)			EPA TO-15	67.6575	ug/m3		KL	4/19/2022	57.22 to 85.84
Ethylene Oxide			EPA TO-15	0.1018	ug/m3	SQ	0.0418	KL	4/19/2022

COMMENTS: \$ETO received in the lab at 5 in Hg.

ug/L: micrograms/liter  
 mg/L: milligrams/liter  
 mg/kg: milligrams/kilogram  
 ug/kg: micrograms/kilogram  
 ug/g: micrograms/gram  
 ppm: parts per million  
 ppb: parts per billion  
 org/L: organisms/liter

<: less than  
 MCL: Maximum Contaminant Level  
 RL: Reporting Limit  
 LSPC: result less than lower specification  
 USPC: result greater than upper specification  
 TIE: Tentatively Identified or Estimated  
 VIOL: Violation (result exceeds MCL)

**Laboratory Contacts:**

Lab Director: Mark Tolbert 470-524-0577  
 Inorganics: Carmen Pyles 470-524-0629  
 Metals: Shene Jones 470-524-0544  
 Organics: Mary Bowman 470-524-0639  
 GC Mass Spec: Ralph Schulz 470-524-0684  
 Microbiology: Mary Bowman 470-524-0709

**GEORGIA DEPARTMENT OF NATURAL RESOURCES  
ENVIRONMENTAL PROTECTION DIVISION**

5804 Peachtree Corners East, Norcross, GA 30092-3403  
(678) 248-7384

**LABORATORY REPORT**

TO: Ga EPD Air Program EPD Air Prot Ambient Monitoring 4244 International Pkwy Ste 120 Atlanta, GA 30354	Date Collected: 3/29/2022 Time Collected: 0:00 Sample Collector: J. BRYANT Chlorination: Sample Type: Received By: HZ
	Date Received: 4/14/2022 Time Received: 11:51 AM Project: DATA STUDY Reporting Date: 5/24/2022 Received Temperature: 19.6 °C
Sample ID: AK96410 Facility Name: FULTON F2 FB Site ID: F2 Location ID: Location Descr:	

ANALYTE	PARAMETER CODE	EPA NOTE	METHOD	RESULT	UNITS	QUALIFIER RL	ANALYSIS		MCL or QC Range
							ANALYST	DATE	
<b>ETO by EPA Method TO-15 QC Batch 195920</b>									
Bromofluorobenzene(Surrogate QC Std.)			EPA TO-15	9.7338	ppbV		KL	4/19/2022	8 to 12
Ethylene Oxide			EPA TO-15	0	ppbV	ND	0.0232	KL	4/19/2022
<b>ETO Results by EPA Method TO-15</b>									
Bromofluorobenzene(Surrogate QC Std.)			EPA TO-15	69.626	ug/m3		KL	4/19/2022	57.22 to 85.84
Ethylene Oxide			EPA TO-15	0	ug/m3	ND	0.0418	KL	4/19/2022

COMMENTS: \$ETO received in the lab at 29 in Hg.

ug/L: micrograms/liter  
 mg/L: milligrams/liter  
 mg/kg: milligrams/kilogram  
 ug/kg: micrograms/kilogram  
 ug/g: micrograms/gram  
 ppm: parts per million  
 ppb: parts per billion  
 org/L: organisms/liter

<: less than  
 MCL: Maximum Contaminant Level  
 RL: Reporting Limit  
 LSPC: result less than lower specification  
 USPC: result greater than upper specification  
 TIE: Tentatively Identified or Estimated  
 VIOL: Violation (result exceeds MCL)

**Laboratory Contacts:**

Lab Director: Mark Tolbert 470-524-0577  
 Inorganics: Carmen Pyles 470-524-0629  
 Metals: Shene Jones 470-524-0544  
 Organics: Mary Bowman 470-524-0639  
 GC Mass Spec: Ralph Schulz 470-524-0684  
 Microbiology: Mary Bowman 470-524-0709

**GEORGIA DEPARTMENT OF NATURAL RESOURCES  
ENVIRONMENTAL PROTECTION DIVISION**

5804 Peachtree Corners East, Norcross, GA 30092-3403  
(678) 248-7384

**LABORATORY REPORT**

TO: Ga EPD Air Program EPD Air Prot Ambient Monitoring 4244 International Pkwy Ste 120 Atlanta, GA 30354	Date Collected: 3/30/2022 Time Collected: 0:00 Sample Collector: C. KNOX Chlorination: Sample Type: Received By: HZ
	Date Received: 4/8/2022 Time Received: 7:51 AM Project: DATA STUDY Reporting Date: 5/24/2022 Received Temperature: 20.3 °C
Sample ID: AK96411 Facility Name: douglas - general coffee Site ID: 013-069-0002 Location ID: Location Descr:	

ANALYTE	PARAMETER CODE	EPA NOTE	METHOD	RESULT	UNITS	QUALIFIER RL	ANALYSIS		MCL or QC Range
							ANALYST	DATE	
<b>ETO by EPA Method TO-15 QC Batch 195785</b>									
Bromofluorobenzene(Surrogate QC Std.)			EPA TO-15	9.8688	ppbV		KL	4/8/2022	8 to 12
Ethylene Oxide			EPA TO-15	0.0391	ppbV	SQ 2	0.0232	KL	4/8/2022
<b>ETO Results by EPA Method TO-15</b>									
Bromofluorobenzene(Surrogate QC Std.)			EPA TO-15	70.5916	ug/m3		KL	4/8/2022	57.22 to 85.84
Ethylene Oxide			EPA TO-15	0.0705	ug/m3	SQ 2	0.0418	KL	4/8/2022

COMMENTS: \$ETO received inthe lab at 20.8 psi. Pressure difference of >0.5 psi between receipt from field and receipt in lab.

ug/L: micrograms/liter mg/L: milligrams/liter mg/kg: milligrams/kilogram ug/kg: micrograms/kilogram ug/g: micrograms/gram ppm: parts per million ppb: parts per billion org/L: organisms/liter	<: less than MCL: Maximum Contaminant Level RL: Reporting Limit LSPC: result less than lower specification USPC: result greater than upper specification TIE: Tentatively Identified or Estimated VIOL: Violation (result exceeds MCL)	<b>Laboratory Contacts:</b> Lab Director: Mark Tolbert 470-524-0577 Inorganics: Carmen Pyles 470-524-0629 Metals: Shene Jones 470-524-0544 Organics: Mary Bowman 470-524-0639 GC Mass Spec: Ralph Schulz 470-524-0684 Microbiology: Mary Bowman 470-524-0709
---	--	--

**GEORGIA DEPARTMENT OF NATURAL RESOURCES  
ENVIRONMENTAL PROTECTION DIVISION**

5804 Peachtree Corners East, Norcross, GA 30092-3403  
(678) 248-7384

**LABORATORY REPORT**

TO: Ga EPD Air Program EPD Air Prot Ambient Monitoring 4244 International Pkwy Ste 120 Atlanta, GA 30354	Date Collected: 3/24/2022 Time Collected: 0:00 Sample Collector: H. STREET Canister Number: 110259 Canister Cleaned: 3/7/2022 Received By: HZ Date Received: 3/28/2022 Time Received: 10:57 AM Project: AIR Reporting Date: 5/24/2022 Received Temperature: 20.1 °C
Sample ID: AK96412 Facility Name: SOUTH DEKALB Site ID: 013-089-0002 Location ID: QCCAN Location Descr:	

ANALYTE	PARAMETER CODE	EPA NOTE	METHOD	RESULT	UNITS	QUALIFIER RL	ANALYSIS		MCL or QC Range
							ANALYST	DATE	
<b>ETO by EPA Method TO-15 QC Batch 195606</b>									
Bromofluorobenzene(Surrogate QC Std.)			EPA TO-15	9.8340	ppbV		KL	3/29/2022	8 to 12
Ethylene Oxide			EPA TO-15	0.0458	ppbV	SQ	0.0232	KL	3/29/2022
<b>ETO Results by EPA Method TO-15</b>									
Bromofluorobenzene(Surrogate QC Std.)			EPA TO-15	70.3427	ug/m3		KL	3/29/2022	57.22 to 85.84
Ethylene Oxide			EPA TO-15	0.0826	ug/m3	SQ	0.0418	KL	3/29/2022

COMMENTS: \$ETO received in the lab at 5.2 psi.

ug/L: micrograms/liter  
 mg/L: milligrams/liter  
 mg/kg: milligrams/kilogram  
 ug/kg: micrograms/kilogram  
 ug/g: micrograms/gram  
 ppm: parts per million  
 ppb: parts per billion  
 org/L: organisms/liter

<: less than  
 MCL: Maximum Contaminant Level  
 RL: Reporting Limit  
 LSPC: result less than lower specification  
 USPC: result greater than upper specification  
 TIE: Tentatively Identified or Estimated  
 VIOL: Violation (result exceeds MCL)

**Laboratory Contacts:**

Lab Director: Mark Tolbert 470-524-0577  
 Inorganics: Carmen Pyles 470-524-0629  
 Metals: Shene Jones 470-524-0544  
 Organics: Mary Bowman 470-524-0639  
 GC Mass Spec: Ralph Schulz 470-524-0684  
 Microbiology: Mary Bowman 470-524-0709



**GEORGIA DEPARTMENT OF NATURAL RESOURCES  
ENVIRONMENTAL PROTECTION DIVISION**

5804 Peachtree Corners East, Norcross, GA 30092-3403  
(678) 248-7384

**LABORATORY REPORT**

TO: Ga EPD Air Program EPD Air Prot Ambient Monitoring 4244 International Pkwy Ste 120 Atlanta, GA 30354	Date Collected: 3/30/2022 Time Collected: 0:00 Sample Collector: H. STREET Canister Number: 110315 Canister Cleaned: 3/7/2022 Received By: HZ
	Date Received: 4/1/2022 Time Received: 11:18 AM Project: AIR Reporting Date: 5/24/2022 Received Temperature: 20.5 °C
Sample ID: AK96413 Facility Name: SOUTH DEKALB Site ID: 013-089-0002 Location ID: Location Descr:	

ANALYTE	PARAMETER CODE	EPA NOTE	METHOD	RESULT	UNITS	QUALIFIER RL	ANALYSIS		MCL or QC Range
							ANALYST	DATE	
<b>ETO by EPA Method TO-15 QC Batch 195652</b>									
Bromofluorobenzene(Surrogate QC Std.)			EPA TO-15	9.5182	ppbV		KL	4/1/2022	8 to 12
Ethylene Oxide			EPA TO-15	0.0756	ppbV	0.0232	KL	4/1/2022	
<b>ETO Results by EPA Method TO-15</b>									
Bromofluorobenzene(Surrogate QC Std.)			EPA TO-15	68.0838	ug/m3		KL	4/1/2022	57.22 to 85.84
Ethylene Oxide			EPA TO-15	0.1363	ug/m3	0.0418	KL	4/1/2022	

COMMENTS: \$ETO received in the lab at 5 psi.

ug/L: micrograms/liter  
 mg/L: milligrams/liter  
 mg/kg: milligrams/kilogram  
 ug/kg: micrograms/kilogram  
 ug/g: micrograms/gram  
 ppm: parts per million  
 ppb: parts per billion  
 org/L: organisms/liter

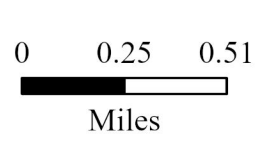
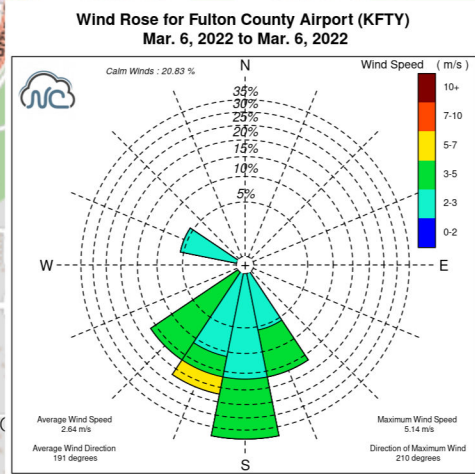
<: less than  
 MCL: Maximum Contaminant Level  
 RL: Reporting Limit  
 LSPC: result less than lower specification  
 USPC: result greater than upper specification  
 TIE: Tentatively Identified or Estimated  
 VIOL: Violation (result exceeds MCL)

**Laboratory Contacts:**

Lab Director: Mark Tolbert 470-524-0577  
 Inorganics: Carmen Pyles 470-524-0629  
 Metals: Shene Jones 470-524-0544  
 Organics: Mary Bowman 470-524-0639  
 GC Mass Spec: Ralph Schulz 470-524-0684  
 Microbiology: Mary Bowman 470-524-0709



**Note:**  
 1. ND = Non-Detect  
 2. X = Not Analyzed  
 3. AP = Sampler stolen from site



**Site ID, Concentration (µg/m3)**

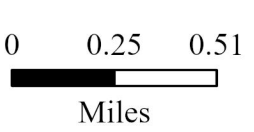
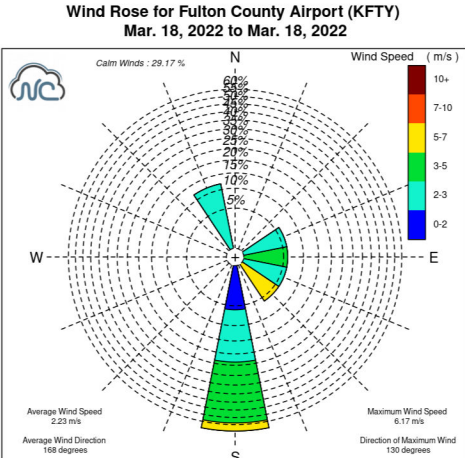
Ethylene Oxide Sampling  
 Fulton County, GA

03/06/2022  
 Sampled By: Georgia Environmental Protection Division  
 Analyzed By: Georgia Environmental Protection Division





**Note:**  
 1. ND = Non-Detect  
 2. X = Not Analyzed  
 3. AP = Sampler stolen from site

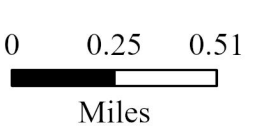
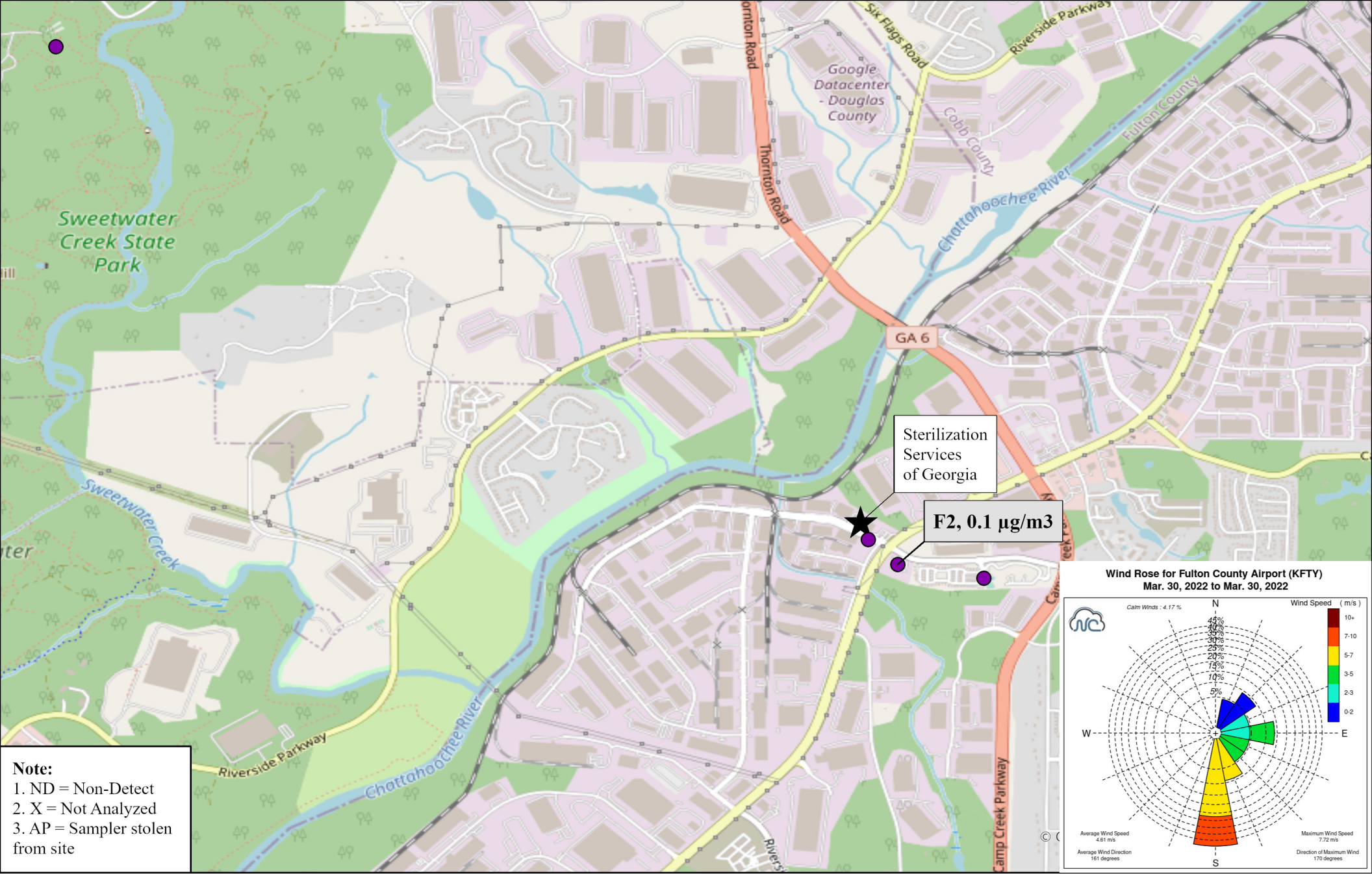


**Site ID, Concentration (µg/m<sup>3</sup>)**

Ethylene Oxide Sampling  
 Fulton County, GA

03/18/2022  
 Sampled By: Georgia Environmental Protection Division  
 Analyzed By: Georgia Environmental Protection Division



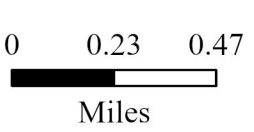
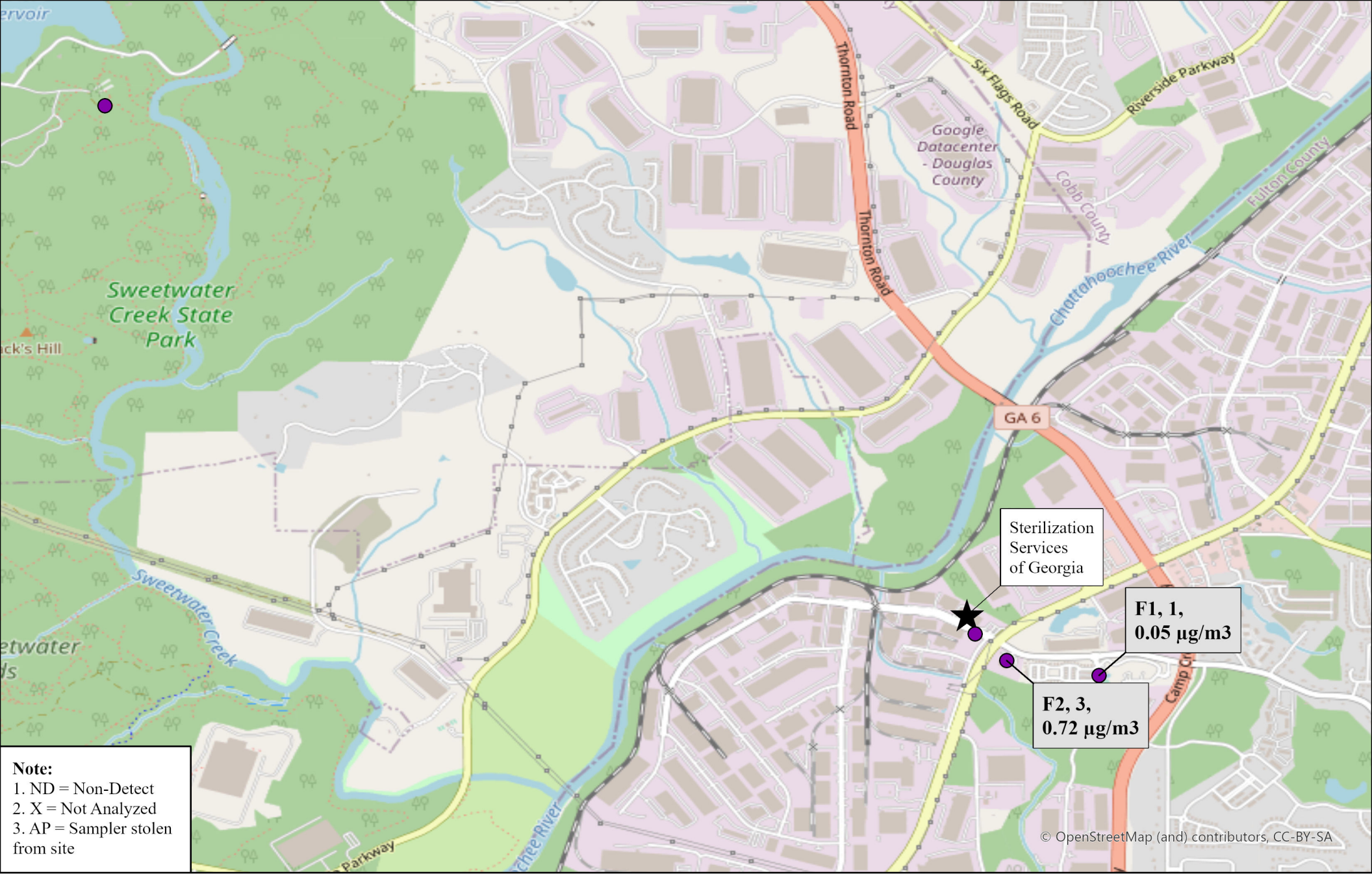


Site ID, Concentration ( $\mu\text{g}/\text{m}^3$ )

Ethylene Oxide Sampling  
 Fulton County, GA

03/30/2022  
 Sampled By: Georgia Environmental Protection Division  
 Analyzed By: Georgia Environmental Protection Division





**Site ID, Number of Samples, Concentration (µg/m³)**

Ethylene Oxide Sampling  
Fulton County, GA

March 2022 Site Average Values  
 Note: Not detectable values were included in average calculations as a value of 0.  
 Sampled By: Georgia Environmental Protection Division  
 Analyzed By: Georgia Environmental Protection Division

