



April 5, 2023

MEMORANDUM

To: Karen Hays, Air Branch Chief *KH*

Through: James Boylan, Assistant Branch Chief

Through: DeAnna Oser, Ambient Monitoring Program Manager

From: Jaime Gore, Operations 1 Unit Manager

RE: Fulton – May 5 – May 29, 2022, Sampling Results for Ethylene Oxide

Samples of Ethylene Oxide (EtO) were collected during the period of May 5 – May 29, 2022, by the Ambient Monitoring Program in the Fulton area to characterize the EtO concentration. Each of the samples were sent to the Georgia Environmental Protection Division Laboratory (EPD) for analysis. The Qualifier code of “SQ” indicates the analysis of the sample was above the method detection limit but below the practical quantification limit.

Location	Date	Qualifier	EtO Concentration (µg/m ³)
F2	05/05/2022		0.23
F2	05/17/2022		0.20
F2	05/29/2022		0.33
F2-QA	05/05/2022		0.22
F1-SA	05/17/2022	SQ	0.10

If you have any questions, please let me know.

JCG

**GEORGIA DEPARTMENT OF NATURAL RESOURCES
ENVIRONMENTAL PROTECTION DIVISION**

5804 Peachtree Corners East, Norcross, GA 30092-3403
(678) 248-7384

LABORATORY REPORT

TO: Ga EPD Air Program EPD Air Prot Ambient Monitoring 4244 International Pkwy Ste 120 Atlanta, GA 30354	Date Collected: 5/5/2022 Time Collected: 0:00 Sample Collector: J. BRYANT Chlorination: Sample Type: Received By: KL
	Date Received: 5/13/2022 Time Received: 10:37 AM Project: DATA STUDY Reporting Date: 8/4/2022 Received Temperature: 24.6 °C
Sample ID: AK99120 Facility Name: COBB S2-QA Site ID: S2-QA Location ID: QCCAN Location Descr:	

ANALYTE	PARAMETER CODE	EPA NOTE	METHOD	RESULT	UNITS	QUALIFIER RL	ANALYSIS		MCL or QC Range
							ANALYST	DATE	
ETO by EPA Method TO-15 QC Batch 196636									
Bromofluorobenzene(Surrogate QC Std.)			EPA TO-15	9.5571	ppbV		HZ	5/17/2022	8 to 12
Ethylene Oxide			EPA TO-15	0.2592	ppbV	0.0232	HZ	5/17/2022	
ETO Results by EPA Method TO-15									
Bromofluorobenzene(Surrogate QC Std.)			EPA TO-15	68.362	ug/m3		HZ	5/17/2022	57.22 to 85.84
Ethylene Oxide			EPA TO-15	0.4672	ug/m3	0.0418	HZ	5/17/2022	

COMMENTS: \$ETO received in the lab at 3.5 in Hg.

ug/L: micrograms/liter
 mg/L: milligrams/liter
 mg/kg: milligrams/kilogram
 ug/kg: micrograms/kilogram
 ug/g: micrograms/gram
 ppm: parts per million
 ppb: parts per billion
 org/L: organisms/liter

<: less than
 MCL: Maximum Contaminant Level
 RL: Reporting Limit
 LSPC: result less than lower specification
 USPC: result greater than upper specification
 TIE: Tentatively Identified or Estimated
 VIOL: Violation (result exceeds MCL)

Laboratory Contacts:

Lab Director: Mark Tolbert 470-524-0577
 Inorganics: Carmen Pyles 470-524-0629
 Metals: Shene Jones 470-524-0544
 Organics: Mary Bowman 470-524-0639
 GC Mass Spec: Ralph Schulz 470-524-0684
 Microbiology: Mary Bowman 470-524-0709

**GEORGIA DEPARTMENT OF NATURAL RESOURCES
ENVIRONMENTAL PROTECTION DIVISION**

5804 Peachtree Corners East, Norcross, GA 30092-3403
(678) 248-7384

LABORATORY REPORT

TO: Ga EPD Air Program EPD Air Prot Ambient Monitoring 4244 International Pkwy Ste 120 Atlanta, GA 30354	Date Collected: 5/11/2022 Time Collected: 0:00 Sample Collector: H. STREET Canister Number: 114353 Canister Cleaned: 4/18/2022 Received By: KL Date Received: 5/13/2022 Time Received: 10:37 AM Project: AIR Reporting Date: 8/4/2022 Received Temperature: 19.7 °C
Sample ID: AK99121 Facility Name: SOUTH DEKALB Site ID: 013-089-0002 Location ID: Location Descr:	

ANALYTE	PARAMETER CODE	EPA NOTE	METHOD	RESULT	UNITS	QUALIFIER RL	ANALYSIS		MCL or QC Range
							ANALYST	DATE	
ETO by EPA Method TO-15 QC Batch 196636									
Bromofluorobenzene(Surrogate QC Std.)			EPA TO-15	9.3430	ppbV		HZ	5/17/2022	8 to 12
Ethylene Oxide			EPA TO-15	0.1507	ppbV	0.0232	HZ	5/17/2022	
ETO Results by EPA Method TO-15									
Bromofluorobenzene(Surrogate QC Std.)			EPA TO-15	66.8306	ug/m3		HZ	5/17/2022	57.22 to 85.84
Ethylene Oxide			EPA TO-15	0.2716	ug/m3	0.0418	HZ	5/17/2022	

COMMENTS: \$ETO received in the lab at 5.4 psi.

ug/L: micrograms/liter
 mg/L: milligrams/liter
 mg/kg: milligrams/kilogram
 ug/kg: micrograms/kilogram
 ug/g: micrograms/gram
 ppm: parts per million
 ppb: parts per billion
 org/L: organisms/liter

<: less than
 MCL: Maximum Contaminant Level
 RL: Reporting Limit
 LSPC: result less than lower specification
 USPC: result greater than upper specification
 TIE: Tentatively Identified or Estimated
 VIOL: Violation (result exceeds MCL)

Laboratory Contacts:

Lab Director: Mark Tolbert 470-524-0577
 Inorganics: Carmen Pyles 470-524-0629
 Metals: Shene Jones 470-524-0544
 Organics: Mary Bowman 470-524-0639
 GC Mass Spec: Ralph Schulz 470-524-0684
 Microbiology: Mary Bowman 470-524-0709

**GEORGIA DEPARTMENT OF NATURAL RESOURCES
ENVIRONMENTAL PROTECTION DIVISION**

5804 Peachtree Corners East, Norcross, GA 30092-3403
(678) 248-7384

LABORATORY REPORT

TO: Ga EPD Air Program EPD Air Prot Ambient Monitoring 4244 International Pkwy Ste 120 Atlanta, GA 30354	Date Collected: 5/17/2022 Time Collected: 0:00 Sample Collector: J. BRYANT Chlorination: Sample Type: Received By: KL Date Received: 5/26/2022 Time Received: 9:56 AM Project: DATA STUDY Reporting Date: 8/4/2022 Received Temperature: 23.1 °C
Sample ID: AK99122 Facility Name: COVINGTON C2 Site ID: C2 Location ID: Location Descr:	

ANALYTE	PARAMETER CODE	EPA NOTE	METHOD	RESULT	UNITS	QUALIFIER RL	ANALYSIS		MCL or QC Range
							ANALYST	DATE	
ETO by EPA Method TO-15 QC Batch 196763									
Bromofluorobenzene(Surrogate QC Std.)		EPA TO-15		9.8634	ppbV		KL	6/1/2022	8 to 12
Ethylene Oxide		EPA TO-15		0.1799	ppbV	0.0232	KL	6/1/2022	
ETO Results by EPA Method TO-15									
Bromofluorobenzene(Surrogate QC Std.)		EPA TO-15		70.553	ug/m3		KL	6/1/2022	57.22 to 85.84
Ethylene Oxide		EPA TO-15		0.3243	ug/m3	0.0418	KL	6/1/2022	

COMMENTS: \$ETO received in the lab at 7 in Hg.

ug/L: micrograms/liter
 mg/L: milligrams/liter
 mg/kg: milligrams/kilogram
 ug/kg: micrograms/kilogram
 ug/g: micrograms/gram
 ppm: parts per million
 ppb: parts per billion
 org/L: organisms/liter

<: less than
 MCL: Maximum Contaminant Level
 RL: Reporting Limit
 LSPC: result less than lower specification
 USPC: result greater than upper specification
 TIE: Tentatively Identified or Estimated
 VIOL: Violation (result exceeds MCL)

Laboratory Contacts:

Lab Director: Mark Tolbert 470-524-0577
 Inorganics: Carmen Pyles 470-524-0629
 Metals: Shene Jones 470-524-0544
 Organics: Mary Bowman 470-524-0639
 GC Mass Spec: Ralph Schulz 470-524-0684
 Microbiology: Mary Bowman 470-524-0709

**GEORGIA DEPARTMENT OF NATURAL RESOURCES
ENVIRONMENTAL PROTECTION DIVISION**

5804 Peachtree Corners East, Norcross, GA 30092-3403
(678) 248-7384

LABORATORY REPORT

TO: Ga EPD Air Program EPD Air Prot Ambient Monitoring 4244 International Pkwy Ste 120 Atlanta, GA 30354	Date Collected: 5/17/2022 Time Collected: 0:00 Sample Collector: J. BRYANT Chlorination: Sample Type: Received By: KL Date Received: 5/26/2022 Time Received: 9:56 AM Project: DATA STUDY Reporting Date: 8/4/2022 Received Temperature: 23.1 °C
Sample ID: AK99123 Facility Name: COBB S6-SA Site ID: S6-SA Location ID: Location Descr:	

ANALYTE	PARAMETER CODE	EPA NOTE	METHOD	RESULT	UNITS	QUALIFIER RL	ANALYSIS		MCL or QC Range
							ANALYST	DATE	
ETO by EPA Method TO-15 QC Batch 196763									
Bromofluorobenzene(Surrogate QC Std.)		EPA TO-15		9.7113	ppbV		KL	6/1/2022	8 to 12
Ethylene Oxide		EPA TO-15		0.0727	ppbV	SQ	0.0232	KL	6/1/2022
ETO Results by EPA Method TO-15									
Bromofluorobenzene(Surrogate QC Std.)		EPA TO-15		69.465	ug/m3		KL	6/1/2022	57.22 to 85.84
Ethylene Oxide		EPA TO-15		0.131	ug/m3	SQ	0.0418	KL	6/1/2022

COMMENTS: \$ETO received in the lab at 4.5 in Hg.

ug/L: micrograms/liter
 mg/L: milligrams/liter
 mg/kg: milligrams/kilogram
 ug/kg: micrograms/kilogram
 ug/g: micrograms/gram
 ppm: parts per million
 ppb: parts per billion
 org/L: organisms/liter

<: less than
 MCL: Maximum Contaminant Level
 RL: Reporting Limit
 LSPC: result less than lower specification
 USPC: result greater than upper specification
 TIE: Tentatively Identified or Estimated
 VIOL: Violation (result exceeds MCL)

Laboratory Contacts:

Lab Director: Mark Tolbert 470-524-0577
 Inorganics: Carmen Pyles 470-524-0629
 Metals: Shene Jones 470-524-0544
 Organics: Mary Bowman 470-524-0639
 GC Mass Spec: Ralph Schulz 470-524-0684
 Microbiology: Mary Bowman 470-524-0709

**GEORGIA DEPARTMENT OF NATURAL RESOURCES
ENVIRONMENTAL PROTECTION DIVISION**

5804 Peachtree Corners East, Norcross, GA 30092-3403
(678) 248-7384

LABORATORY REPORT

TO: Ga EPD Air Program EPD Air Prot Ambient Monitoring 4244 International Pkwy Ste 120 Atlanta, GA 30354	Date Collected: 5/17/2022 Time Collected: 0:00 Sample Collector: J. BRYANT Chlorination: Sample Type: Received By: KL Date Received: 5/26/2022 Time Received: 9:56 AM Project: DATA STUDY Reporting Date: 8/4/2022 Received Temperature: 23.0 °C
Sample ID: AK99125 Facility Name: COBB S2 Site ID: S2 Location ID: Location Descr:	

ANALYTE	PARAMETER CODE	EPA NOTE	METHOD	RESULT	UNITS	QUALIFIER RL	ANALYSIS		MCL or QC Range
							ANALYST	DATE	
ETO by EPA Method TO-15 QC Batch 196763									
Bromofluorobenzene(Surrogate QC Std.)		EPA TO-15		9.6767	ppbV		KL	6/1/2022	8 to 12
Ethylene Oxide		EPA TO-15		0.0636	ppbV	SQ	0.0232	KL	6/1/2022
ETO Results by EPA Method TO-15									
Bromofluorobenzene(Surrogate QC Std.)		EPA TO-15		69.2175	ug/m3		KL	6/1/2022	57.22 to 85.84
Ethylene Oxide		EPA TO-15		0.1146	ug/m3	SQ	0.0418	KL	6/1/2022

COMMENTS: \$ETO received in the lab at 3 in Hg.

ug/L: micrograms/liter
 mg/L: milligrams/liter
 mg/kg: milligrams/kilogram
 ug/kg: micrograms/kilogram
 ug/g: micrograms/gram
 ppm: parts per million
 ppb: parts per billion
 org/L: organisms/liter

<: less than
 MCL: Maximum Contaminant Level
 RL: Reporting Limit
 LSPC: result less than lower specification
 USPC: result greater than upper specification
 TIE: Tentatively Identified or Estimated
 VIOL: Violation (result exceeds MCL)

Laboratory Contacts:

Lab Director: Mark Tolbert 470-524-0577
 Inorganics: Carmen Pyles 470-524-0629
 Metals: Shene Jones 470-524-0544
 Organics: Mary Bowman 470-524-0639
 GC Mass Spec: Ralph Schulz 470-524-0684
 Microbiology: Mary Bowman 470-524-0709

**GEORGIA DEPARTMENT OF NATURAL RESOURCES
ENVIRONMENTAL PROTECTION DIVISION**

5804 Peachtree Corners East, Norcross, GA 30092-3403
(678) 248-7384

LABORATORY REPORT

TO: Ga EPD Air Program EPD Air Prot Ambient Monitoring 4244 International Pkwy Ste 120 Atlanta, GA 30354	Date Collected: 5/5/2022 Time Collected: 0:00 Sample Collector: J. BRYANT Chlorination: Sample Type: Received By: KL
	Date Received: 5/13/2022 Time Received: 10:37 AM Project: DATA STUDY Reporting Date: 8/4/2022 Received Temperature: 23.5 °C
Sample ID: AK99128 Facility Name: COBB S2 Site ID: S2 Location ID: QCCAN Location Descr:	

ANALYTE	PARAMETER CODE	EPA NOTE	METHOD	RESULT	UNITS	QUALIFIER RL	ANALYSIS		MCL or QC Range
							ANALYST	DATE	
ETO by EPA Method TO-15 QC Batch 196636									
Bromofluorobenzene(Surrogate QC Std.)			EPA TO-15	9.3828	ppbV		HZ	5/17/2022	8 to 12
Ethylene Oxide			EPA TO-15	0.1396	ppbV	0.0232	HZ	5/17/2022	
ETO Results by EPA Method TO-15									
Bromofluorobenzene(Surrogate QC Std.)			EPA TO-15	67.1153	ug/m3		HZ	5/17/2022	57.22 to 85.84
Ethylene Oxide			EPA TO-15	0.2516	ug/m3	0.0418	HZ	5/17/2022	

COMMENTS: \$ETO received in the lab at 6.5 in Hg.

ug/L: micrograms/liter
 mg/L: milligrams/liter
 mg/kg: milligrams/kilogram
 ug/kg: micrograms/kilogram
 ug/g: micrograms/gram
 ppm: parts per million
 ppb: parts per billion
 org/L: organisms/liter

<: less than
 MCL: Maximum Contaminant Level
 RL: Reporting Limit
 LSPC: result less than lower specification
 USPC: result greater than upper specification
 TIE: Tentatively Identified or Estimated
 VIOL: Violation (result exceeds MCL)

Laboratory Contacts:

Lab Director: Mark Tolbert 470-524-0577
 Inorganics: Carmen Pyles 470-524-0629
 Metals: Shene Jones 470-524-0544
 Organics: Mary Bowman 470-524-0639
 GC Mass Spec: Ralph Schulz 470-524-0684
 Microbiology: Mary Bowman 470-524-0709

**GEORGIA DEPARTMENT OF NATURAL RESOURCES
ENVIRONMENTAL PROTECTION DIVISION**

5804 Peachtree Corners East, Norcross, GA 30092-3403
(678) 248-7384

LABORATORY REPORT

TO: Ga EPD Air Program EPD Air Prot Ambient Monitoring 4244 International Pkwy Ste 120 Atlanta, GA 30354	Date Collected: 5/5/2022 Time Collected: 0:00 Sample Collector: J. BRYANT Chlorination: Sample Type: Received By: KL Date Received: 5/13/2022 Time Received: 10:37 AM Project: DATA STUDY Reporting Date: 8/4/2022 Received Temperature: 19.4 °C
Sample ID: AK99129 Facility Name: COVINGTON C2 Site ID: C2 Location ID: Location Descr:	

ANALYTE	PARAMETER CODE	EPA NOTE	METHOD	RESULT	UNITS	QUALIFIER RL	ANALYSIS		MCL or QC Range
							ANALYST	DATE	
ETO by EPA Method TO-15 QC Batch 196636									
Bromofluorobenzene(Surrogate QC Std.)			EPA TO-15	9.0362	ppbV		HZ	5/17/2022	8 to 12
Ethylene Oxide			EPA TO-15	0.1075	ppbV	0.0232	HZ	5/17/2022	
ETO Results by EPA Method TO-15									
Bromofluorobenzene(Surrogate QC Std.)			EPA TO-15	64.636	ug/m3		HZ	5/17/2022	57.22 to 85.84
Ethylene Oxide			EPA TO-15	0.1938	ug/m3	0.0418	HZ	5/17/2022	

COMMENTS: \$ETO received in the lab at 4 in Hg.

ug/L: micrograms/liter
 mg/L: milligrams/liter
 mg/kg: milligrams/kilogram
 ug/kg: micrograms/kilogram
 ug/g: micrograms/gram
 ppm: parts per million
 ppb: parts per billion
 org/L: organisms/liter

<: less than
 MCL: Maximum Contaminant Level
 RL: Reporting Limit
 LSPC: result less than lower specification
 USPC: result greater than upper specification
 TIE: Tentatively Identified or Estimated
 VIOL: Violation (result exceeds MCL)

Laboratory Contacts:

Lab Director: Mark Tolbert 470-524-0577
 Inorganics: Carmen Pyles 470-524-0629
 Metals: Shene Jones 470-524-0544
 Organics: Mary Bowman 470-524-0639
 GC Mass Spec: Ralph Schulz 470-524-0684
 Microbiology: Mary Bowman 470-524-0709

**GEORGIA DEPARTMENT OF NATURAL RESOURCES
ENVIRONMENTAL PROTECTION DIVISION**

5804 Peachtree Corners East, Norcross, GA 30092-3403
(678) 248-7384

LABORATORY REPORT

TO: Ga EPD Air Program EPD Air Prot Ambient Monitoring 4244 International Pkwy Ste 120 Atlanta, GA 30354	Date Collected: 5/5/2022 Time Collected: 0:00 Sample Collector: C. KNOX Chlorination: Sample Type: Received By: KL Date Received: 5/13/2022 Time Received: 1:27 PM Project: DATA STUDY Reporting Date: 8/4/2022 Received Temperature: 25.9 °C
Sample ID: AK99130 Facility Name: GENERAL COFFEE Site ID: 013-069-0002 Location ID: Location Descr:	

ANALYTE	PARAMETER CODE	EPA NOTE	METHOD	RESULT	UNITS	QUALIFIER RL	ANALYSIS		MCL or QC Range	
							ANALYST	DATE		
ETO by EPA Method TO-15 QC Batch 196636										
Bromofluorobenzene(Surrogate QC Std.)			EPA TO-15	9.2866	ppbV			HZ	5/17/2022	8 to 12
Ethylene Oxide			EPA TO-15	0.0976	ppbV	2	0.0232	HZ	5/17/2022	
ETO Results by EPA Method TO-15										
Bromofluorobenzene(Surrogate QC Std.)			EPA TO-15	66.4272	ug/m3			HZ	5/17/2022	57.22 to 85.84
Ethylene Oxide			EPA TO-15	0.1759	ug/m3	2	0.0418	HZ	5/17/2022	

COMMENTS: \$ETO received in the lab at 21 psi. Pressure difference of >0.5 psi between receipt from field and receipt in lab.

ug/L: micrograms/liter
 mg/L: milligrams/liter
 mg/kg: milligrams/kilogram
 ug/kg: micrograms/kilogram
 ug/g: micrograms/gram
 ppm: parts per million
 ppb: parts per billion
 org/L: organisms/liter

<: less than
 MCL: Maximum Contaminant Level
 RL: Reporting Limit
 LSPC: result less than lower specification
 USPC: result greater than upper specification
 TIE: Tentatively Identified or Estimated
 VIOL: Violation (result exceeds MCL)

Laboratory Contacts:

Lab Director: Mark Tolbert 470-524-0577
 Inorganics: Carmen Pyles 470-524-0629
 Metals: Shene Jones 470-524-0544
 Organics: Mary Bowman 470-524-0639
 GC Mass Spec: Ralph Schulz 470-524-0684
 Microbiology: Mary Bowman 470-524-0709

**GEORGIA DEPARTMENT OF NATURAL RESOURCES
ENVIRONMENTAL PROTECTION DIVISION**

5804 Peachtree Corners East, Norcross, GA 30092-3403
(678) 248-7384

LABORATORY REPORT

TO: Ga EPD Air Program EPD Air Prot Ambient Monitoring 4244 International Pkwy Ste 120 Atlanta, GA 30354	Date Collected: 5/5/2022 Time Collected: 0:00 Sample Collector: H. STREET Canister Number: 114378 Canister Cleaned: 4/18/2022 Received By: KL Date Received: 5/9/2022 Time Received: 12:43 PM Project: AIR Reporting Date: 8/4/2022 Received Temperature: 21.6 °C
Sample ID: AK99131 Facility Name: SOUTH DEKALB Site ID: 013-089-0002 Location ID: Location Descr:	

ANALYTE	PARAMETER CODE	EPA NOTE	METHOD	RESULT	UNITS	QUALIFIER RL	ANALYSIS		MCL or QC Range
							ANALYST	DATE	
ETO by EPA Method TO-15 QC Batch 196380									
Bromofluorobenzene(Surrogate QC Std.)			EPA TO-15	9.4622	ppbV		KL	5/11/2022	8 to 12
Ethylene Oxide			EPA TO-15	0.1291	ppbV	0.0232	KL	5/11/2022	
ETO Results by EPA Method TO-15									
Bromofluorobenzene(Surrogate QC Std.)			EPA TO-15	67.6832	ug/m3		KL	5/11/2022	57.22 to 85.84
Ethylene Oxide			EPA TO-15	0.2327	ug/m3	0.0418	KL	5/11/2022	

COMMENTS: \$ETO received in the lab at 5 psi.

ug/L: micrograms/liter
 mg/L: milligrams/liter
 mg/kg: milligrams/kilogram
 ug/kg: micrograms/kilogram
 ug/g: micrograms/gram
 ppm: parts per million
 ppb: parts per billion
 org/L: organisms/liter

<: less than
 MCL: Maximum Contaminant Level
 RL: Reporting Limit
 LSPC: result less than lower specification
 USPC: result greater than upper specification
 TIE: Tentatively Identified or Estimated
 VIOL: Violation (result exceeds MCL)

Laboratory Contacts:

Lab Director: Mark Tolbert 470-524-0577
 Inorganics: Carmen Pyles 470-524-0629
 Metals: Shene Jones 470-524-0544
 Organics: Mary Bowman 470-524-0639
 GC Mass Spec: Ralph Schulz 470-524-0684
 Microbiology: Mary Bowman 470-524-0709

**GEORGIA DEPARTMENT OF NATURAL RESOURCES
ENVIRONMENTAL PROTECTION DIVISION**

5804 Peachtree Corners East, Norcross, GA 30092-3403
(678) 248-7384

LABORATORY REPORT

TO: Ga EPD Air Program EPD Air Prot Ambient Monitoring 4244 International Pkwy Ste 120 Atlanta, GA 30354	Date Collected: 5/5/2022 Time Collected: 0:00 Sample Collector: J. BRYANT Chlorination: Sample Type: Received By: KL Date Received: 5/13/2022 Time Received: 10:37 AM Project: DATA STUDY Reporting Date: 8/4/2022 Received Temperature: 19.8 °C
Sample ID: AK99132 Facility Name: FULTON F2 Site ID: F2 Location ID: Location Descr:	

ANALYTE	PARAMETER CODE	EPA NOTE	METHOD	RESULT	UNITS	QUALIFIER RL	ANALYSIS		MCL or QC Range
							ANALYST	DATE	
ETO by EPA Method TO-15 QC Batch 196636									
Bromofluorobenzene(Surrogate QC Std.)		EPA TO-15		9.5664	ppbV		HZ	5/17/2022	8 to 12
Ethylene Oxide		EPA TO-15		0.1268	ppbV	0.0232	HZ	5/17/2022	
ETO Results by EPA Method TO-15									
Bromofluorobenzene(Surrogate QC Std.)		EPA TO-15		68.4286	ug/m3		HZ	5/17/2022	57.22 to 85.84
Ethylene Oxide		EPA TO-15		0.2286	ug/m3	0.0418	HZ	5/17/2022	

COMMENTS: \$ETO received in the lab at 5.5 in Hg.

ug/L: micrograms/liter
 mg/L: milligrams/liter
 mg/kg: milligrams/kilogram
 ug/kg: micrograms/kilogram
 ug/g: micrograms/gram
 ppm: parts per million
 ppb: parts per billion
 org/L: organisms/liter

<: less than
 MCL: Maximum Contaminant Level
 RL: Reporting Limit
 LSPC: result less than lower specification
 USPC: result greater than upper specification
 TIE: Tentatively Identified or Estimated
 VIOL: Violation (result exceeds MCL)

Laboratory Contacts:

Lab Director: Mark Tolbert 470-524-0577
 Inorganics: Carmen Pyles 470-524-0629
 Metals: Shene Jones 470-524-0544
 Organics: Mary Bowman 470-524-0639
 GC Mass Spec: Ralph Schulz 470-524-0684
 Microbiology: Mary Bowman 470-524-0709

**GEORGIA DEPARTMENT OF NATURAL RESOURCES
ENVIRONMENTAL PROTECTION DIVISION**

5804 Peachtree Corners East, Norcross, GA 30092-3403
(678) 248-7384

LABORATORY REPORT

TO: Ga EPD Air Program EPD Air Prot Ambient Monitoring 4244 International Pkwy Ste 120 Atlanta, GA 30354	Date Collected: 5/5/2022 Time Collected: 0:00 Sample Collector: J. BRYANT Chlorination: Sample Type: Received By: KL Date Received: 5/13/2022 Time Received: 10:37 AM Project: DATA STUDY Reporting Date: 8/4/2022 Received Temperature: 20.9 °C
Sample ID: AK99133 Facility Name: COVINGTON C2-QA Site ID: C2-QA Location ID: Location Descr:	

ANALYTE	PARAMETER CODE	EPA NOTE	METHOD	RESULT	UNITS	QUALIFIER RL	ANALYSIS		MCL or QC Range
							ANALYST	DATE	
ETO by EPA Method TO-15 QC Batch 196636									
Bromofluorobenzene(Surrogate QC Std.)			EPA TO-15	9.5861	ppbV		HZ	5/17/2022	8 to 12
Ethylene Oxide			EPA TO-15	0.1110	ppbV	0.0232	HZ	5/17/2022	
ETO Results by EPA Method TO-15									
Bromofluorobenzene(Surrogate QC Std.)			EPA TO-15	68.5695	ug/m3		HZ	5/17/2022	57.22 to 85.84
Ethylene Oxide			EPA TO-15	0.2001	ug/m3	0.0418	HZ	5/17/2022	

COMMENTS: \$ETO received in the lab at 4 in Hg.

ug/L: micrograms/liter
 mg/L: milligrams/liter
 mg/kg: milligrams/kilogram
 ug/kg: micrograms/kilogram
 ug/g: micrograms/gram
 ppm: parts per million
 ppb: parts per billion
 org/L: organisms/liter

<: less than
 MCL: Maximum Contaminant Level
 RL: Reporting Limit
 LSPC: result less than lower specification
 USPC: result greater than upper specification
 TIE: Tentatively Identified or Estimated
 VIOL: Violation (result exceeds MCL)

Laboratory Contacts:

Lab Director: Mark Tolbert 470-524-0577
 Inorganics: Carmen Pyles 470-524-0629
 Metals: Shene Jones 470-524-0544
 Organics: Mary Bowman 470-524-0639
 GC Mass Spec: Ralph Schulz 470-524-0684
 Microbiology: Mary Bowman 470-524-0709

**GEORGIA DEPARTMENT OF NATURAL RESOURCES
ENVIRONMENTAL PROTECTION DIVISION**

5804 Peachtree Corners East, Norcross, GA 30092-3403
(678) 248-7384

LABORATORY REPORT

TO: Ga EPD Air Program EPD Air Prot Ambient Monitoring 4244 International Pkwy Ste 120 Atlanta, GA 30354	Date Collected: 5/5/2022 Time Collected: 0:00 Sample Collector: H. STREET Canister Number: 114339 Canister Cleaned: 4/18/2022 Received By: KL Date Received: 5/9/2022 Time Received: 12:43 PM Project: AIR Reporting Date: 8/4/2022 Received Temperature: 20.4 °C
Sample ID: AK99134 Facility Name: SOUTH DEKALB QA Site ID: 013-089-0002 Location ID: Location Descr:	

ANALYTE	PARAMETER CODE	EPA NOTE	METHOD	RESULT	UNITS	QUALIFIER RL	ANALYSIS		MCL or QC Range
							ANALYST	DATE	
ETO by EPA Method TO-15 QC Batch 196380									
Bromofluorobenzene(Surrogate QC Std.)			EPA TO-15	9.6338	ppbV		KL	5/11/2022	8 to 12
Ethylene Oxide			EPA TO-15	0.1151	ppbV	0.0232	KL	5/11/2022	
ETO Results by EPA Method TO-15									
Bromofluorobenzene(Surrogate QC Std.)			EPA TO-15	68.9107	ug/m3		KL	5/11/2022	57.22 to 85.84
Ethylene Oxide			EPA TO-15	0.2075	ug/m3	0.0418	KL	5/11/2022	
ETO NATTS QA Replicate Precision									
Ethylene Oxide			EPA TO-15	18.7	%RPD		KL	5/12/2022	25
ETO QA Replicate Result									
Bromofluorobenzene(Surrogate QC Std.)			EPA TO-15	9.6675	ppbV		KL	5/11/2022	8 to 12
Ethylene Oxide			EPA TO-15	0.0954	ppbV		KL	5/11/2022	

COMMENTS: \$ETO received in the lab at 5.2 psi.

ug/L: micrograms/liter
 mg/L: milligrams/liter
 mg/kg: milligrams/kilogram
 ug/kg: micrograms/kilogram
 ug/g: micrograms/gram
 ppm: parts per million
 ppb: parts per billion
 org/L: organisms/liter

<: less than
 MCL: Maximum Contaminant Level
 RL: Reporting Limit
 LSPC: result less than lower specification
 USPC: result greater than upper specification
 TIE: Tentatively Identified or Estimated
 VIOL: Violation (result exceeds MCL)

Laboratory Contacts:

Lab Director: Mark Tolbert 470-524-0577
 Inorganics: Carmen Pyles 470-524-0629
 Metals: Shene Jones 470-524-0544
 Organics: Mary Bowman 470-524-0639
 GC Mass Spec: Ralph Schulz 470-524-0684
 Microbiology: Mary Bowman 470-524-0709

**GEORGIA DEPARTMENT OF NATURAL RESOURCES
ENVIRONMENTAL PROTECTION DIVISION**

5804 Peachtree Corners East, Norcross, GA 30092-3403
(678) 248-7384

LABORATORY REPORT

TO: Ga EPD Air Program EPD Air Prot Ambient Monitoring 4244 International Pkwy Ste 120 Atlanta, GA 30354	Date Collected: 5/5/2022 Time Collected: 0:00 Sample Collector: J. BRYANT Chlorination: Sample Type: Received By: KL Date Received: 5/13/2022 Time Received: 10:37 AM Project: DATA STUDY Reporting Date: 8/4/2022 Received Temperature: 21.6 °C
Sample ID: AK99135 Facility Name: FULTON F2-QA Site ID: F2-QA Location ID: Location Descr:	

ANALYTE	PARAMETER CODE	EPA NOTE	METHOD	RESULT	UNITS	QUALIFIER RL	ANALYSIS		MCL or QC Range
							ANALYST	DATE	
ETO by EPA Method TO-15 QC Batch 196636									
Bromofluorobenzene(Surrogate QC Std.)			EPA TO-15	9.6530	ppbV		HZ	5/17/2022	8 to 12
Ethylene Oxide			EPA TO-15	0.1244	ppbV	0.0232	HZ	5/17/2022	
ETO Results by EPA Method TO-15									
Bromofluorobenzene(Surrogate QC Std.)			EPA TO-15	69.048	ug/m3		HZ	5/17/2022	57.22 to 85.84
Ethylene Oxide			EPA TO-15	0.2242	ug/m3	0.0418	HZ	5/17/2022	

COMMENTS: \$ETO received in the lab at 4 in Hg.

ug/L: micrograms/liter
 mg/L: milligrams/liter
 mg/kg: milligrams/kilogram
 ug/kg: micrograms/kilogram
 ug/g: micrograms/gram
 ppm: parts per million
 ppb: parts per billion
 org/L: organisms/liter

<: less than
 MCL: Maximum Contaminant Level
 RL: Reporting Limit
 LSPC: result less than lower specification
 USPC: result greater than upper specification
 TIE: Tentatively Identified or Estimated
 VIOL: Violation (result exceeds MCL)

Laboratory Contacts:

Lab Director: Mark Tolbert 470-524-0577
 Inorganics: Carmen Pyles 470-524-0629
 Metals: Shene Jones 470-524-0544
 Organics: Mary Bowman 470-524-0639
 GC Mass Spec: Ralph Schulz 470-524-0684
 Microbiology: Mary Bowman 470-524-0709

**GEORGIA DEPARTMENT OF NATURAL RESOURCES
ENVIRONMENTAL PROTECTION DIVISION**

5804 Peachtree Corners East, Norcross, GA 30092-3403
(678) 248-7384

LABORATORY REPORT

TO: Ga EPD Air Program EPD Air Prot Ambient Monitoring 4244 International Pkwy Ste 120 Atlanta, GA 30354	Date Collected: 5/17/2022 Time Collected: 0:00 Sample Collector: J. BRYANT Chlorination: Sample Type: Received By: HZ Date Received: 5/26/2022 Time Received: 9:56 AM Project: DATA STUDY Reporting Date: 8/4/2022 Received Temperature: 23.1 °C
Sample ID: AL00077 Facility Name: COVINGTON C3-SA Site ID: C3-SA Location ID: QCCAN Location Descr:	

ANALYTE	PARAMETER CODE	EPA NOTE	METHOD	RESULT	UNITS	QUALIFIER RL	ANALYSIS		MCL or QC Range
							ANALYST	DATE	
ETO by EPA Method TO-15 QC Batch 196763									
Bromofluorobenzene(Surrogate QC Std.)			EPA TO-15	10.0540	ppbV		KL	6/1/2022	8 to 12
Ethylene Oxide			EPA TO-15	0.0746	ppbV	0.0232	KL	6/1/2022	
ETO Results by EPA Method TO-15									
Bromofluorobenzene(Surrogate QC Std.)			EPA TO-15	71.9164	ug/m3		KL	6/1/2022	57.22 to 85.84
Ethylene Oxide			EPA TO-15	0.1345	ug/m3	0.0418	KL	6/1/2022	

COMMENTS: \$ETO received in the lab at 5 in Hg.

ug/L: micrograms/liter
 mg/L: milligrams/liter
 mg/kg: milligrams/kilogram
 ug/kg: micrograms/kilogram
 ug/g: micrograms/gram
 ppm: parts per million
 ppb: parts per billion
 org/L: organisms/liter

<: less than
 MCL: Maximum Contaminant Level
 RL: Reporting Limit
 LSPC: result less than lower specification
 USPC: result greater than upper specification
 TIE: Tentatively Identified or Estimated
 VIOL: Violation (result exceeds MCL)

Laboratory Contacts:

Lab Director: Mark Tolbert 470-524-0577
 Inorganics: Carmen Pyles 470-524-0629
 Metals: Shene Jones 470-524-0544
 Organics: Mary Bowman 470-524-0639
 GC Mass Spec: Ralph Schulz 470-524-0684
 Microbiology: Mary Bowman 470-524-0709

**GEORGIA DEPARTMENT OF NATURAL RESOURCES
ENVIRONMENTAL PROTECTION DIVISION**

5804 Peachtree Corners East, Norcross, GA 30092-3403
(678) 248-7384

LABORATORY REPORT

TO: Ga EPD Air Program EPD Air Prot Ambient Monitoring 4244 International Pkwy Ste 120 Atlanta, GA 30354	Date Collected: 5/17/2022 Time Collected: 0:00 Sample Collector: J. BRYANT Chlorination: Sample Type: Received By: HZ Date Received: 5/26/2022 Time Received: 9:56 AM Project: DATA STUDY Reporting Date: 8/4/2022 Received Temperature: 23.0 °C
Sample ID: AL00078 Facility Name: FULTON F2 Site ID: F2 Location ID: Location Descr:	

ANALYTE	PARAMETER CODE	EPA NOTE	METHOD	RESULT	UNITS	QUALIFIER RL	ANALYSIS		MCL or QC Range
							ANALYST	DATE	
ETO by EPA Method TO-15 QC Batch 196763									
Bromofluorobenzene(Surrogate QC Std.)			EPA TO-15	9.7321	ppbV		KL	6/1/2022	8 to 12
Ethylene Oxide			EPA TO-15	0.1134	ppbV	0.0232	KL	6/1/2022	
ETO Results by EPA Method TO-15									
Bromofluorobenzene(Surrogate QC Std.)			EPA TO-15	69.6138	ug/m3		KL	6/1/2022	57.22 to 85.84
Ethylene Oxide			EPA TO-15	0.2044	ug/m3	0.0418	KL	6/1/2022	

COMMENTS: \$ETO received in the lab at 5 in Hg.

ug/L: micrograms/liter
 mg/L: milligrams/liter
 mg/kg: milligrams/kilogram
 ug/kg: micrograms/kilogram
 ug/g: micrograms/gram
 ppm: parts per million
 ppb: parts per billion
 org/L: organisms/liter

<: less than
 MCL: Maximum Contaminant Level
 RL: Reporting Limit
 LSPC: result less than lower specification
 USPC: result greater than upper specification
 TIE: Tentatively Identified or Estimated
 VIOL: Violation (result exceeds MCL)

Laboratory Contacts:

Lab Director: Mark Tolbert 470-524-0577
 Inorganics: Carmen Pyles 470-524-0629
 Metals: Shene Jones 470-524-0544
 Organics: Mary Bowman 470-524-0639
 GC Mass Spec: Ralph Schulz 470-524-0684
 Microbiology: Mary Bowman 470-524-0709

**GEORGIA DEPARTMENT OF NATURAL RESOURCES
ENVIRONMENTAL PROTECTION DIVISION**

5804 Peachtree Corners East, Norcross, GA 30092-3403
(678) 248-7384

LABORATORY REPORT

TO: Ga EPD Air Program EPD Air Prot Ambient Monitoring 4244 International Pkwy Ste 120 Atlanta, GA 30354	Date Collected: 5/17/2022 Time Collected: 0:00 Sample Collector: J. BRYANT Chlorination: Sample Type: Received By: HZ Date Received: 5/26/2022 Time Received: 9:56 AM Project: DATA STUDY Reporting Date: 8/4/2022 Received Temperature: 23.0 °C
Sample ID: AL00079 Facility Name: FULTON F1-SA Site ID: F1-SA Location ID: Location Descr:	

ANALYTE	PARAMETER CODE	EPA NOTE	METHOD	RESULT	UNITS	QUALIFIER RL	ANALYSIS		MCL or QC Range
							ANALYST	DATE	
ETO by EPA Method TO-15 QC Batch 196763									
Bromofluorobenzene(Surrogate QC Std.)			EPA TO-15	9.2516	ppbV		KL	6/1/2022	8 to 12
Ethylene Oxide			EPA TO-15	0.0575	ppbV	SQ	0.0232	KL	6/1/2022
ETO Results by EPA Method TO-15									
Bromofluorobenzene(Surrogate QC Std.)			EPA TO-15	66.1768	ug/m3		KL	6/1/2022	57.22 to 85.84
Ethylene Oxide			EPA TO-15	0.1036	ug/m3	SQ	0.0418	KL	6/1/2022

COMMENTS: \$ETO received in the lab at 5 in Hg.

ug/L: micrograms/liter
 mg/L: milligrams/liter
 mg/kg: milligrams/kilogram
 ug/kg: micrograms/kilogram
 ug/g: micrograms/gram
 ppm: parts per million
 ppb: parts per billion
 org/L: organisms/liter

<: less than
 MCL: Maximum Contaminant Level
 RL: Reporting Limit
 LSPC: result less than lower specification
 USPC: result greater than upper specification
 TIE: Tentatively Identified or Estimated
 VIOL: Violation (result exceeds MCL)

Laboratory Contacts:

Lab Director: Mark Tolbert 470-524-0577
 Inorganics: Carmen Pyles 470-524-0629
 Metals: Shene Jones 470-524-0544
 Organics: Mary Bowman 470-524-0639
 GC Mass Spec: Ralph Schulz 470-524-0684
 Microbiology: Mary Bowman 470-524-0709

**GEORGIA DEPARTMENT OF NATURAL RESOURCES
ENVIRONMENTAL PROTECTION DIVISION**

5804 Peachtree Corners East, Norcross, GA 30092-3403
(678) 248-7384

LABORATORY REPORT

TO: Ga EPD Air Program EPD Air Prot Ambient Monitoring 4244 International Pkwy Ste 120 Atlanta, GA 30354	Date Collected: 5/17/2022 Time Collected: 0:00 Sample Collector: H. STREET Canister Number: 110327 Canister Cleaned: 5/2/2022 Received By: HZ Date Received: 5/19/2022 Time Received: 10:06 AM Project: AIR Reporting Date: 8/4/2022 Received Temperature: 25.6 °C
Sample ID: AL00081 Facility Name: SOUTH DEKALB Site ID: 013-089-0002 Location ID: Location Descr:	

ANALYTE	PARAMETER CODE	EPA NOTE	METHOD	RESULT	UNITS	QUALIFIER RL	ANALYSIS		MCL or QC Range
							ANALYST	DATE	
ETO by EPA Method TO-15 QC Batch 196763									
Bromofluorobenzene(Surrogate QC Std.)			EPA TO-15	9.9710	ppbV		KL	6/1/2022	8 to 12
Ethylene Oxide			EPA TO-15	0.0680	ppbV	SQ	0.0232	KL	6/1/2022
ETO Results by EPA Method TO-15									
Bromofluorobenzene(Surrogate QC Std.)			EPA TO-15	71.3227	ug/m3		KL	6/1/2022	57.22 to 85.84
Ethylene Oxide			EPA TO-15	0.1226	ug/m3	SQ	0.0418	KL	6/1/2022

COMMENTS: \$ETO received in the lab at 5.4 psi.

ug/L: micrograms/liter
 mg/L: milligrams/liter
 mg/kg: milligrams/kilogram
 ug/kg: micrograms/kilogram
 ug/g: micrograms/gram
 ppm: parts per million
 ppb: parts per billion
 org/L: organisms/liter

<: less than
 MCL: Maximum Contaminant Level
 RL: Reporting Limit
 LSPC: result less than lower specification
 USPC: result greater than upper specification
 TIE: Tentatively Identified or Estimated
 VIOL: Violation (result exceeds MCL)

Laboratory Contacts:

Lab Director: Mark Tolbert 470-524-0577
 Inorganics: Carmen Pyles 470-524-0629
 Metals: Shene Jones 470-524-0544
 Organics: Mary Bowman 470-524-0639
 GC Mass Spec: Ralph Schulz 470-524-0684
 Microbiology: Mary Bowman 470-524-0709

**GEORGIA DEPARTMENT OF NATURAL RESOURCES
ENVIRONMENTAL PROTECTION DIVISION**

5804 Peachtree Corners East, Norcross, GA 30092-3403
(678) 248-7384

LABORATORY REPORT

TO: Ga EPD Air Program EPD Air Prot Ambient Monitoring 4244 International Pkwy Ste 120 Atlanta, GA 30354	Date Collected: 5/17/2022 Time Collected: 0:00 Sample Collector: C. KNOX Chlorination: Sample Type: Received By: HZ
	Date Received: 5/25/2022 Time Received: 11:25 AM Project: DATA STUDY Reporting Date: 8/4/2022 Received Temperature: 23.5 °C
Sample ID: AL00082 Facility Name: DOUGLAS - GENERAL COFFEE Site ID: 013-069-0002 Location ID: Location Descr:	

ANALYTE	PARAMETER CODE	EPA NOTE	METHOD	RESULT	UNITS	QUALIFIER RL	ANALYSIS		MCL or QC Range
							ANALYST	DATE	
ETO by EPA Method TO-15									
Bromofluorobenzene(Surrogate QC Std.)			EPA TO-15	Not Analyzed	ppbV	AQ	KL	5/25/2022	8 to 12
Ethylene Oxide			EPA TO-15	Not Analyzed	ppbV	AQ	0.0232 KL	5/25/2022	
ETO Results by EPA Method TO-15									
Bromofluorobenzene(Surrogate QC Std.)			EPA TO-15	Not Analyzed	ug/m3	AQ	KL	5/25/2022	57.22 to 85.84
Ethylene Oxide			EPA TO-15	Not Analyzed	ug/m3	AQ	0.0418 KL	5/25/2022	

COMMENTS: \$ETO received in the lab at 29 in Hg.

ug/L: micrograms/liter
 mg/L: milligrams/liter
 mg/kg: milligrams/kilogram
 ug/kg: micrograms/kilogram
 ug/g: micrograms/gram
 ppm: parts per million
 ppb: parts per billion
 org/L: organisms/liter

<: less than
 MCL: Maximum Contaminant Level
 RL: Reporting Limit
 LSPC: result less than lower specification
 USPC: result greater than upper specification
 TIE: Tentatively Identified or Estimated
 VIOL: Violation (result exceeds MCL)

Laboratory Contacts:

Lab Director: Mark Tolbert 470-524-0577
 Inorganics: Carmen Pyles 470-524-0629
 Metals: Shene Jones 470-524-0544
 Organics: Mary Bowman 470-524-0639
 GC Mass Spec: Ralph Schulz 470-524-0684
 Microbiology: Mary Bowman 470-524-0709

**GEORGIA DEPARTMENT OF NATURAL RESOURCES
ENVIRONMENTAL PROTECTION DIVISION**

5804 Peachtree Corners East, Norcross, GA 30092-3403
(678) 248-7384

LABORATORY REPORT

TO: Ga EPD Air Program EPD Air Prot Ambient Monitoring 4244 International Pkwy Ste 120 Atlanta, GA 30354	Date Collected: 5/29/2022 Time Collected: 0:00 Sample Collector: C. KNOX Chlorination: Sample Type: Received By: HZ Date Received: 6/3/2022 Time Received: 2:09 PM Project: DATA STUDY Reporting Date: 8/4/2022 Received Temperature: 24.1 °C
Sample ID: AL00083 Facility Name: DOUGLAS - GENERAL COFFEE Site ID: 013-069-0002 Location ID: Location Descr:	

ANALYTE	PARAMETER CODE	EPA NOTE	METHOD	RESULT	UNITS	QUALIFIER RL	ANALYSIS		MCL or QC Range
							ANALYST	DATE	
ETO by EPA Method TO-15 QC Batch 196994									
Bromofluorobenzene(Surrogate QC Std.)		EPA TO-15		10.2926	ppbV		KL	6/8/2022	8 to 12
Ethylene Oxide		EPA TO-15		0.0669	ppbV	SQ	0.0232	KL	6/8/2022
ETO Results by EPA Method TO-15									
Bromofluorobenzene(Surrogate QC Std.)		EPA TO-15		73.6231	ug/m3		KL	6/8/2022	57.22 to 85.84
Ethylene Oxide		EPA TO-15		0.1206	ug/m3	SQ	0.0418	KL	6/8/2022

COMMENTS: \$ETO received in the lab at 21 psi.

ug/L: micrograms/liter
 mg/L: milligrams/liter
 mg/kg: milligrams/kilogram
 ug/kg: micrograms/kilogram
 ug/g: micrograms/gram
 ppm: parts per million
 ppb: parts per billion
 org/L: organisms/liter

<: less than
 MCL: Maximum Contaminant Level
 RL: Reporting Limit
 LSPC: result less than lower specification
 USPC: result greater than upper specification
 TIE: Tentatively Identified or Estimated
 VIOL: Violation (result exceeds MCL)

Laboratory Contacts:

Lab Director: Mark Tolbert 470-524-0577
 Inorganics: Carmen Pyles 470-524-0629
 Metals: Shene Jones 470-524-0544
 Organics: Mary Bowman 470-524-0639
 GC Mass Spec: Ralph Schulz 470-524-0684
 Microbiology: Mary Bowman 470-524-0709

**GEORGIA DEPARTMENT OF NATURAL RESOURCES
ENVIRONMENTAL PROTECTION DIVISION**

5804 Peachtree Corners East, Norcross, GA 30092-3403
(678) 248-7384

LABORATORY REPORT

TO: Ga EPD Air Program EPD Air Prot Ambient Monitoring 4244 International Pkwy Ste 120 Atlanta, GA 30354	Date Collected: 5/23/2022 Time Collected: 0:00 Sample Collector: H. STREET Canister Number: 114394 Canister Cleaned: 5/2/2022 Received By: HZ Date Received: 5/26/2022 Time Received: 9:56 AM Project: AIR Reporting Date: 8/4/2022 Received Temperature: 22.9 °C
Sample ID: AL00084 Facility Name: SOUTH DEKALB Site ID: 013-089-0002 Location ID: Location Descr:	

ANALYTE	PARAMETER CODE	EPA NOTE	METHOD	RESULT	UNITS	QUALIFIER	RL	ANALYSIS		MCL or QC Range
								ANALYST	DATE	
ETO by EPA Method TO-15 QC Batch 196763										
Bromofluorobenzene(Surrogate QC Std.)		EPA TO-15		10.2491	ppbV			KL	6/1/2022	8 to 12
Ethylene Oxide		EPA TO-15		0.0569	ppbV	SQ	0.0232	KL	6/1/2022	
ETO Results by EPA Method TO-15										
Bromofluorobenzene(Surrogate QC Std.)		EPA TO-15		73.3119	ug/m3			KL	6/1/2022	57.22 to 85.84
Ethylene Oxide		EPA TO-15		0.1026	ug/m3	SQ	0.0418	KL	6/1/2022	

COMMENTS: \$ETO received in the lab at 5.2 psi.

ug/L: micrograms/liter
 mg/L: milligrams/liter
 mg/kg: milligrams/kilogram
 ug/kg: micrograms/kilogram
 ug/g: micrograms/gram
 ppm: parts per million
 ppb: parts per billion
 org/L: organisms/liter

<: less than
 MCL: Maximum Contaminant Level
 RL: Reporting Limit
 LSPC: result less than lower specification
 USPC: result greater than upper specification
 TIE: Tentatively Identified or Estimated
 VIOL: Violation (result exceeds MCL)

Laboratory Contacts:

Lab Director: Mark Tolbert 470-524-0577
 Inorganics: Carmen Pyles 470-524-0629
 Metals: Shene Jones 470-524-0544
 Organics: Mary Bowman 470-524-0639
 GC Mass Spec: Ralph Schulz 470-524-0684
 Microbiology: Mary Bowman 470-524-0709

**GEORGIA DEPARTMENT OF NATURAL RESOURCES
ENVIRONMENTAL PROTECTION DIVISION**

5804 Peachtree Corners East, Norcross, GA 30092-3403
(678) 248-7384

LABORATORY REPORT

TO: Ga EPD Air Program EPD Air Prot Ambient Monitoring 4244 International Pkwy Ste 120 Atlanta, GA 30354	Date Collected: 5/29/2022 Time Collected: 0:00 Sample Collector: J. BRYANT Chlorination: Sample Type: Received By: HZ
	Date Received: 6/7/2022 Time Received: 11:26 AM Project: DATA STUDY Reporting Date: 8/4/2022 Received Temperature: 23.6 °C
Sample ID: AL00085 Facility Name: COBB S2 Site ID: S2 Location ID: QCCAN Location Descr:	

ANALYTE	PARAMETER CODE	EPA NOTE	METHOD	RESULT	UNITS	QUALIFIER RL	ANALYSIS		MCL or QC Range
							ANALYST	DATE	
ETO by EPA Method TO-15 QC Batch 197025									
Bromofluorobenzene(Surrogate QC Std.)			EPA TO-15	9.9496	ppbV		KL	6/14/2022	8 to 12
Ethylene Oxide			EPA TO-15	0.0979	ppbV	0.0232	KL	6/14/2022	
ETO Results by EPA Method TO-15									
Bromofluorobenzene(Surrogate QC Std.)			EPA TO-15	71.1696	ug/m3		KL	6/14/2022	57.22 to 85.84
Ethylene Oxide			EPA TO-15	0.1765	ug/m3	0.0418	KL	6/14/2022	

COMMENTS: \$ETO received in the lab at 5 in Hg.

ug/L: micrograms/liter
 mg/L: milligrams/liter
 mg/kg: milligrams/kilogram
 ug/kg: micrograms/kilogram
 ug/g: micrograms/gram
 ppm: parts per million
 ppb: parts per billion
 org/L: organisms/liter

<: less than
 MCL: Maximum Contaminant Level
 RL: Reporting Limit
 LSPC: result less than lower specification
 USPC: result greater than upper specification
 TIE: Tentatively Identified or Estimated
 VIOL: Violation (result exceeds MCL)

Laboratory Contacts:

Lab Director: Mark Tolbert 470-524-0577
 Inorganics: Carmen Pyles 470-524-0629
 Metals: Shene Jones 470-524-0544
 Organics: Mary Bowman 470-524-0639
 GC Mass Spec: Ralph Schulz 470-524-0684
 Microbiology: Mary Bowman 470-524-0709

**GEORGIA DEPARTMENT OF NATURAL RESOURCES
ENVIRONMENTAL PROTECTION DIVISION**

5804 Peachtree Corners East, Norcross, GA 30092-3403
(678) 248-7384

LABORATORY REPORT

TO: Ga EPD Air Program EPD Air Prot Ambient Monitoring 4244 International Pkwy Ste 120 Atlanta, GA 30354	Date Collected: 5/25/2022 Time Collected: 0:00 Sample Collector: J. BRYANT Chlorination: Sample Type: Received By: HZ
Sample ID: AL00086 Facility Name: COBB S2 FB Site ID: S2 Location ID: Location Descr:	Date Received: 6/7/2022 Time Received: 11:26 AM Project: DATA STUDY Reporting Date: 8/4/2022 Received Temperature: 20.5 °C

ANALYTE	PARAMETER CODE	EPA NOTE	METHOD	RESULT	UNITS	QUALIFIER RL	ANALYSIS		MCL or QC Range
							ANALYST	DATE	
ETO by EPA Method TO-15 QC Batch 197025									
Bromofluorobenzene(Surrogate QC Std.)		EPA TO-15		10.3414	ppbV		KL	6/14/2022	8 to 12
Ethylene Oxide		EPA TO-15		0	ppbV	ND 0.0232	KL	6/14/2022	
ETO Results by EPA Method TO-15									
Bromofluorobenzene(Surrogate QC Std.)		EPA TO-15		73.9722	ug/m3		KL	6/14/2022	57.22 to 85.84
Ethylene Oxide		EPA TO-15		0	ug/m3	ND 0.0418	KL	6/14/2022	

COMMENTS: \$ETO received in the lab at 29 in Hg.

ug/L: micrograms/liter
 mg/L: milligrams/liter
 mg/kg: milligrams/kilogram
 ug/kg: micrograms/kilogram
 ug/g: micrograms/gram
 ppm: parts per million
 ppb: parts per billion
 org/L: organisms/liter

<: less than
 MCL: Maximum Contaminant Level
 RL: Reporting Limit
 LSPC: result less than lower specification
 USPC: result greater than upper specification
 TIE: Tentatively Identified or Estimated
 VIOL: Violation (result exceeds MCL)

Laboratory Contacts:

Lab Director: Mark Tolbert 470-524-0577
 Inorganics: Carmen Pyles 470-524-0629
 Metals: Shene Jones 470-524-0544
 Organics: Mary Bowman 470-524-0639
 GC Mass Spec: Ralph Schulz 470-524-0684
 Microbiology: Mary Bowman 470-524-0709

**GEORGIA DEPARTMENT OF NATURAL RESOURCES
ENVIRONMENTAL PROTECTION DIVISION**

5804 Peachtree Corners East, Norcross, GA 30092-3403
(678) 248-7384

LABORATORY REPORT

TO: Ga EPD Air Program EPD Air Prot Ambient Monitoring 4244 International Pkwy Ste 120 Atlanta, GA 30354	Date Collected: 5/29/2022 Time Collected: 0:00 Sample Collector: J. BRYANT Chlorination: Sample Type: Received By: HZ
Sample ID: AL00087 Facility Name: FULTON F2 Site ID: F2 Location ID: Location Descr:	Date Received: 6/7/2022 Time Received: 11:26 AM Project: DATA STUDY Reporting Date: 8/4/2022 Received Temperature: 21.6 °C

ANALYTE	PARAMETER CODE	EPA NOTE	METHOD	RESULT	UNITS	QUALIFIER RL	ANALYSIS		MCL or QC Range
							ANALYST	DATE	
ETO by EPA Method TO-15 QC Batch 197025									
Bromofluorobenzene(Surrogate QC Std.)			EPA TO-15	10.0367	ppbV		KL	6/14/2022	8 to 12
Ethylene Oxide			EPA TO-15	0.1846	ppbV	0.0232	KL	6/14/2022	
ETO Results by EPA Method TO-15									
Bromofluorobenzene(Surrogate QC Std.)			EPA TO-15	71.7926	ug/m3		KL	6/14/2022	57.22 to 85.84
Ethylene Oxide			EPA TO-15	0.3328	ug/m3	0.0418	KL	6/14/2022	

COMMENTS: \$ETO received in the lab at 6 in Hg.

ug/L: micrograms/liter
 mg/L: milligrams/liter
 mg/kg: milligrams/kilogram
 ug/kg: micrograms/kilogram
 ug/g: micrograms/gram
 ppm: parts per million
 ppb: parts per billion
 org/L: organisms/liter

<: less than
 MCL: Maximum Contaminant Level
 RL: Reporting Limit
 LSPC: result less than lower specification
 USPC: result greater than upper specification
 TIE: Tentatively Identified or Estimated
 VIOL: Violation (result exceeds MCL)

Laboratory Contacts:

Lab Director: Mark Tolbert 470-524-0577
 Inorganics: Carmen Pyles 470-524-0629
 Metals: Shene Jones 470-524-0544
 Organics: Mary Bowman 470-524-0639
 GC Mass Spec: Ralph Schulz 470-524-0684
 Microbiology: Mary Bowman 470-524-0709

**GEORGIA DEPARTMENT OF NATURAL RESOURCES
ENVIRONMENTAL PROTECTION DIVISION**

5804 Peachtree Corners East, Norcross, GA 30092-3403
(678) 248-7384

LABORATORY REPORT

TO: Ga EPD Air Program EPD Air Prot Ambient Monitoring 4244 International Pkwy Ste 120 Atlanta, GA 30354	Date Collected: 5/25/2022 Time Collected: 0:00 Sample Collector: J. BRYANT Chlorination: Sample Type: T Received By: HZ Date Received: 6/7/2022 Time Received: 11:26 AM Project: DATA STUDY Reporting Date: 8/4/2022 Received Temperature: 20.9 °C
Sample ID: AL00088 Facility Name: FULTON F2 FB Site ID: F2 Location ID: Location Descr:	

ANALYTE	PARAMETER CODE	EPA NOTE	METHOD	RESULT	UNITS	QUALIFIER RL	ANALYSIS		MCL or QC Range
							ANALYST	DATE	
ETO by EPA Method TO-15 QC Batch 197025									
Bromofluorobenzene(Surrogate QC Std.)			EPA TO-15	10.3110	ppbV		KL	6/14/2022	8 to 12
Ethylene Oxide			EPA TO-15	0	ppbV	ND	0.0232	KL	6/14/2022
ETO Results by EPA Method TO-15									
Bromofluorobenzene(Surrogate QC Std.)			EPA TO-15	73.7547	ug/m3		KL	6/14/2022	57.22 to 85.84
Ethylene Oxide			EPA TO-15	0	ug/m3	ND	0.0418	KL	6/14/2022

COMMENTS: \$ETO received in the lab at 29 in Hg.

ug/L: micrograms/liter
 mg/L: milligrams/liter
 mg/kg: milligrams/kilogram
 ug/kg: micrograms/kilogram
 ug/g: micrograms/gram
 ppm: parts per million
 ppb: parts per billion
 org/L: organisms/liter

<: less than
 MCL: Maximum Contaminant Level
 RL: Reporting Limit
 LSPC: result less than lower specification
 USPC: result greater than upper specification
 TIE: Tentatively Identified or Estimated
 VIOL: Violation (result exceeds MCL)

Laboratory Contacts:

Lab Director: Mark Tolbert 470-524-0577
 Inorganics: Carmen Pyles 470-524-0629
 Metals: Shene Jones 470-524-0544
 Organics: Mary Bowman 470-524-0639
 GC Mass Spec: Ralph Schulz 470-524-0684
 Microbiology: Mary Bowman 470-524-0709

**GEORGIA DEPARTMENT OF NATURAL RESOURCES
ENVIRONMENTAL PROTECTION DIVISION**

5804 Peachtree Corners East, Norcross, GA 30092-3403
(678) 248-7384

LABORATORY REPORT

TO: Ga EPD Air Program EPD Air Prot Ambient Monitoring 4244 International Pkwy Ste 120 Atlanta, GA 30354	Date Collected: 5/24/2022 Time Collected: 0:00 Sample Collector: J. BRYANT Chlorination: Sample Type: Received By: HZ
	Date Received: 6/7/2022 Time Received: 11:26 AM Project: DATA STUDY Reporting Date: 8/4/2022 Received Temperature: 21.7 °C
Sample ID: AL00089 Facility Name: COVINGTON C2 FB Site ID: C2 Location ID: Location Descr:	

ANALYTE	PARAMETER CODE	EPA NOTE	METHOD	RESULT	UNITS	QUALIFIER RL	ANALYSIS		MCL or QC Range
							ANALYST	DATE	
ETO by EPA Method TO-15 QC Batch 197025									
Bromofluorobenzene(Surrogate QC Std.)			EPA TO-15	10.3880	ppbV		KL	6/14/2022	8 to 12
Ethylene Oxide			EPA TO-15	0	ppbV	ND	0.0232	KL	6/14/2022
ETO Results by EPA Method TO-15									
Bromofluorobenzene(Surrogate QC Std.)			EPA TO-15	74.3055	ug/m3		KL	6/14/2022	57.22 to 85.84
Ethylene Oxide			EPA TO-15	0	ug/m3	ND	0.0418	KL	6/14/2022

COMMENTS: \$ETO received in the lab at 29 in Hg.

ug/L: micrograms/liter
 mg/L: milligrams/liter
 mg/kg: milligrams/kilogram
 ug/kg: micrograms/kilogram
 ug/g: micrograms/gram
 ppm: parts per million
 ppb: parts per billion
 org/L: organisms/liter

<: less than
 MCL: Maximum Contaminant Level
 RL: Reporting Limit
 LSPC: result less than lower specification
 USPC: result greater than upper specification
 TIE: Tentatively Identified or Estimated
 VIOL: Violation (result exceeds MCL)

Laboratory Contacts:

Lab Director: Mark Tolbert 470-524-0577
 Inorganics: Carmen Pyles 470-524-0629
 Metals: Shene Jones 470-524-0544
 Organics: Mary Bowman 470-524-0639
 GC Mass Spec: Ralph Schulz 470-524-0684
 Microbiology: Mary Bowman 470-524-0709

**GEORGIA DEPARTMENT OF NATURAL RESOURCES
ENVIRONMENTAL PROTECTION DIVISION**

5804 Peachtree Corners East, Norcross, GA 30092-3403
(678) 248-7384

LABORATORY REPORT

TO: Ga EPD Air Program EPD Air Prot Ambient Monitoring 4244 International Pkwy Ste 120 Atlanta, GA 30354	Date Collected: 5/29/2022 Time Collected: 0:00 Sample Collector: J. BRYANT Chlorination: Sample Type: Received By: HZ
	Date Received: 6/7/2022 Time Received: 11:26 AM Project: DATA STUDY Reporting Date: 8/4/2022 Received Temperature: 22.1 °C
Sample ID: AL00090 Facility Name: COVINGTON C2 Site ID: C2 Location ID: Location Descr:	

ANALYTE	PARAMETER CODE	EPA NOTE	METHOD	RESULT	UNITS	QUALIFIER RL	ANALYSIS		MCL or QC Range
							ANALYST	DATE	
ETO by EPA Method TO-15 QC Batch 197025									
Bromofluorobenzene(Surrogate QC Std.)			EPA TO-15	9.9614	ppbV		KL	6/14/2022	8 to 12
Ethylene Oxide			EPA TO-15	0.1999	ppbV	0.0232	KL	6/14/2022	
ETO Results by EPA Method TO-15									
Bromofluorobenzene(Surrogate QC Std.)			EPA TO-15	71.254	ug/m3		KL	6/14/2022	57.22 to 85.84
Ethylene Oxide			EPA TO-15	0.3603	ug/m3	0.0418	KL	6/14/2022	

COMMENTS: \$ETO received in the lab at 5 in Hg.

ug/L: micrograms/liter
 mg/L: milligrams/liter
 mg/kg: milligrams/kilogram
 ug/kg: micrograms/kilogram
 ug/g: micrograms/gram
 ppm: parts per million
 ppb: parts per billion
 org/L: organisms/liter

<: less than
 MCL: Maximum Contaminant Level
 RL: Reporting Limit
 LSPC: result less than lower specification
 USPC: result greater than upper specification
 TIE: Tentatively Identified or Estimated
 VIOL: Violation (result exceeds MCL)

Laboratory Contacts:

Lab Director: Mark Tolbert 470-524-0577
 Inorganics: Carmen Pyles 470-524-0629
 Metals: Shene Jones 470-524-0544
 Organics: Mary Bowman 470-524-0639
 GC Mass Spec: Ralph Schulz 470-524-0684
 Microbiology: Mary Bowman 470-524-0709

**GEORGIA DEPARTMENT OF NATURAL RESOURCES
ENVIRONMENTAL PROTECTION DIVISION**

5804 Peachtree Corners East, Norcross, GA 30092-3403
(678) 248-7384

LABORATORY REPORT

TO: Ga EPD Air Program EPD Air Prot Ambient Monitoring 4244 International Pkwy Ste 120 Atlanta, GA 30354	Date Collected: 5/29/2022 Time Collected: 0:00 Sample Collector: H. STREET Canister Number: 114324 Canister Cleaned: 5/2/2022 Received By: HZ Date Received: 6/1/2022 Time Received: 11:43 AM Project: AIR Reporting Date: 8/4/2022 Received Temperature: 21.9 °C
Sample ID: AL00091 Facility Name: SOUTH DEKALB Site ID: 013-089-0002 Location ID: Location Descr:	

ANALYTE	PARAMETER CODE	EPA NOTE	METHOD	RESULT	UNITS	QUALIFIER RL	ANALYSIS		MCL or QC Range
							ANALYST	DATE	
ETO by EPA Method TO-15 QC Batch 196763									
Bromofluorobenzene(Surrogate QC Std.)		EPA TO-15		10.0994	ppbV		KL	6/1/2022	8 to 12
Ethylene Oxide		EPA TO-15		0.0673	ppbV	SQ	0.0232	KL	6/1/2022
ETO Results by EPA Method TO-15									
Bromofluorobenzene(Surrogate QC Std.)		EPA TO-15		72.2411	ug/m3		KL	6/1/2022	57.22 to 85.84
Ethylene Oxide		EPA TO-15		0.1213	ug/m3	SQ	0.0418	KL	6/1/2022

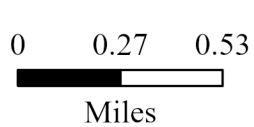
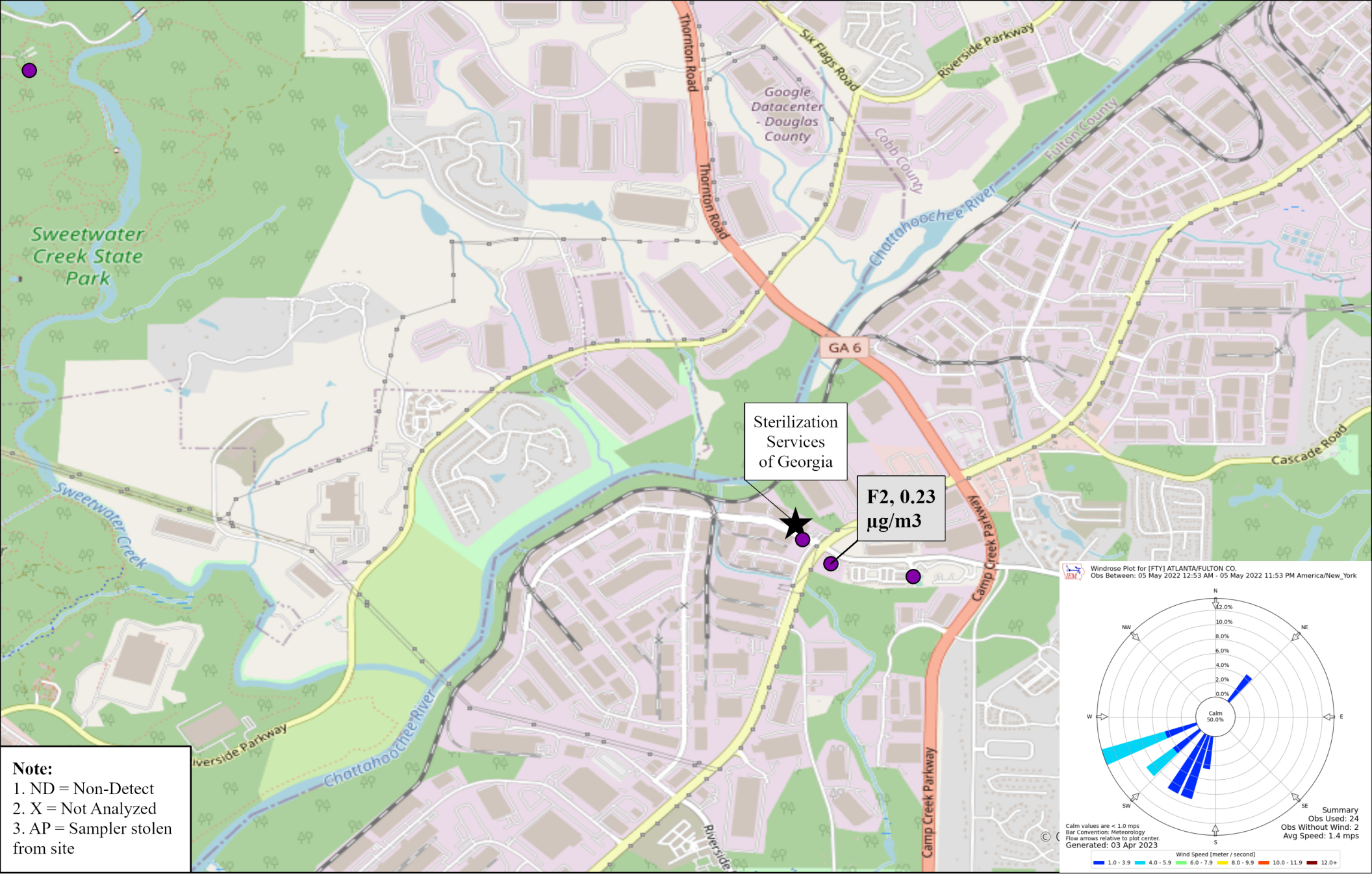
COMMENTS: \$ETO received in the lab at 5.4 psi.

ug/L: micrograms/liter
 mg/L: milligrams/liter
 mg/kg: milligrams/kilogram
 ug/kg: micrograms/kilogram
 ug/g: micrograms/gram
 ppm: parts per million
 ppb: parts per billion
 org/L: organisms/liter

<: less than
 MCL: Maximum Contaminant Level
 RL: Reporting Limit
 LSPC: result less than lower specification
 USPC: result greater than upper specification
 TIE: Tentatively Identified or Estimated
 VIOL: Violation (result exceeds MCL)

Laboratory Contacts:

Lab Director: Mark Tolbert 470-524-0577
 Inorganics: Carmen Pyles 470-524-0629
 Metals: Shene Jones 470-524-0544
 Organics: Mary Bowman 470-524-0639
 GC Mass Spec: Ralph Schulz 470-524-0684
 Microbiology: Mary Bowman 470-524-0709



Site ID, Concentration ($\mu\text{g}/\text{m}^3$)

Ethylene Oxide Sampling
 Fulton County, GA

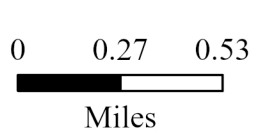
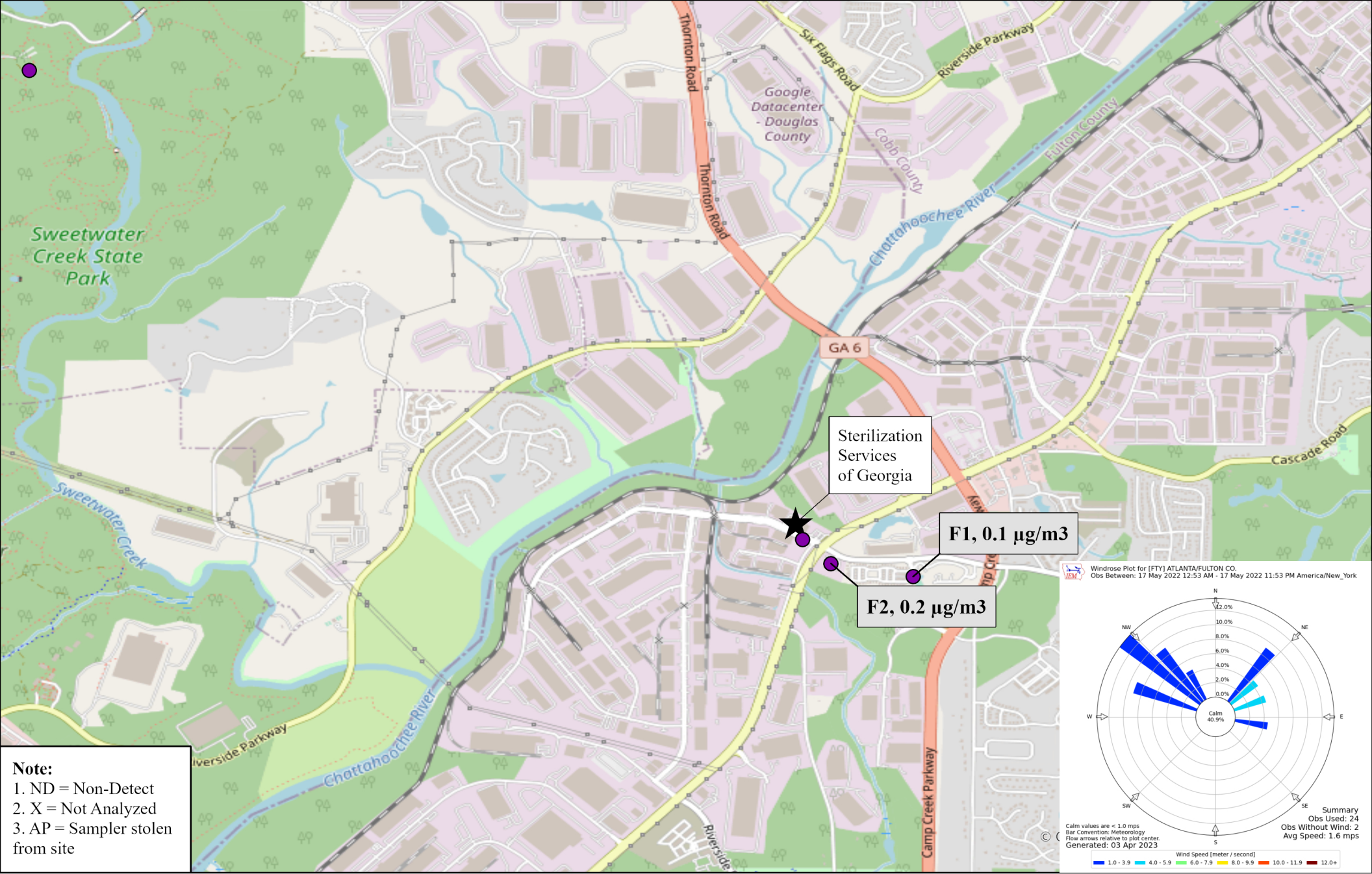
05/05/2022

Sampled By: Georgia Environmental Protection Division
 Analyzed By: Georgia Environmental Protection Division



GEORGIA
 DEPARTMENT OF NATURAL RESOURCES

ENVIRONMENTAL PROTECTION DIVISION



Site ID, Concentration ($\mu\text{g}/\text{m}^3$)

Ethylene Oxide Sampling
 Fulton County, GA

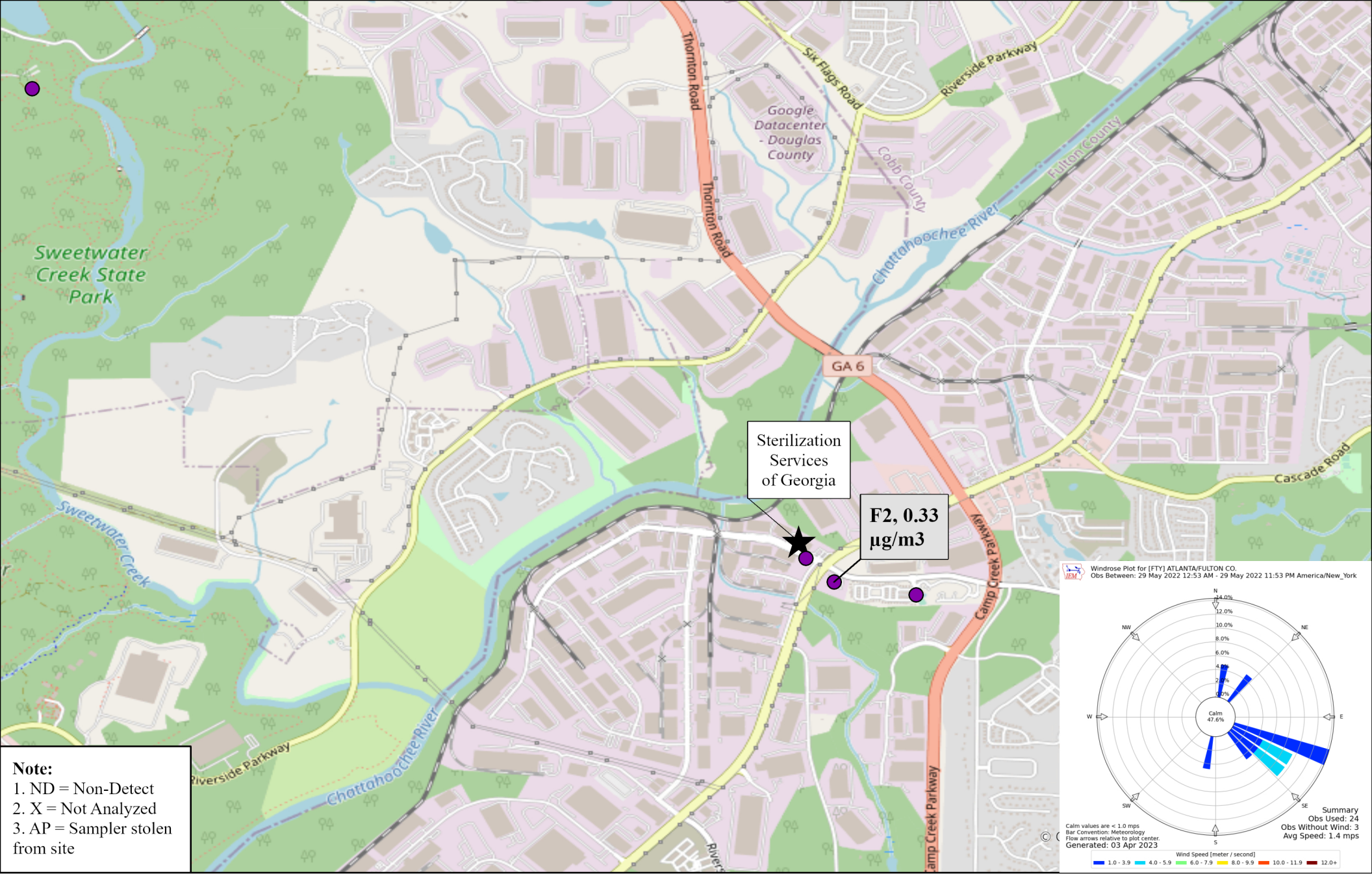
05/17/2022

Sampled By: Georgia Environmental Protection Division
 Analyzed By: Georgia Environmental Protection Division

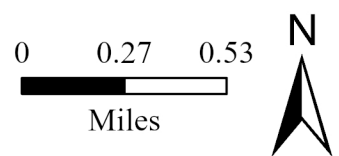
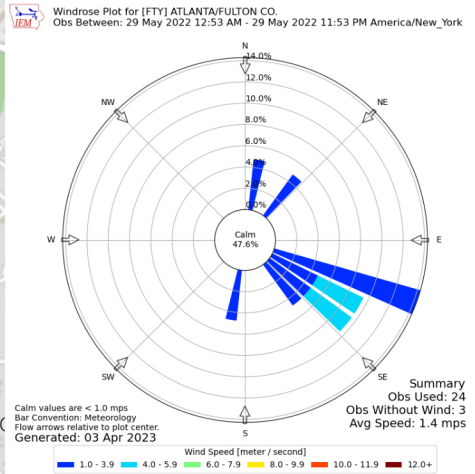


GEORGIA
 DEPARTMENT OF NATURAL RESOURCES

ENVIRONMENTAL PROTECTION DIVISION



Note:
 1. ND = Non-Detect
 2. X = Not Analyzed
 3. AP = Sampler stolen from site

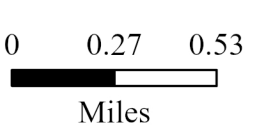
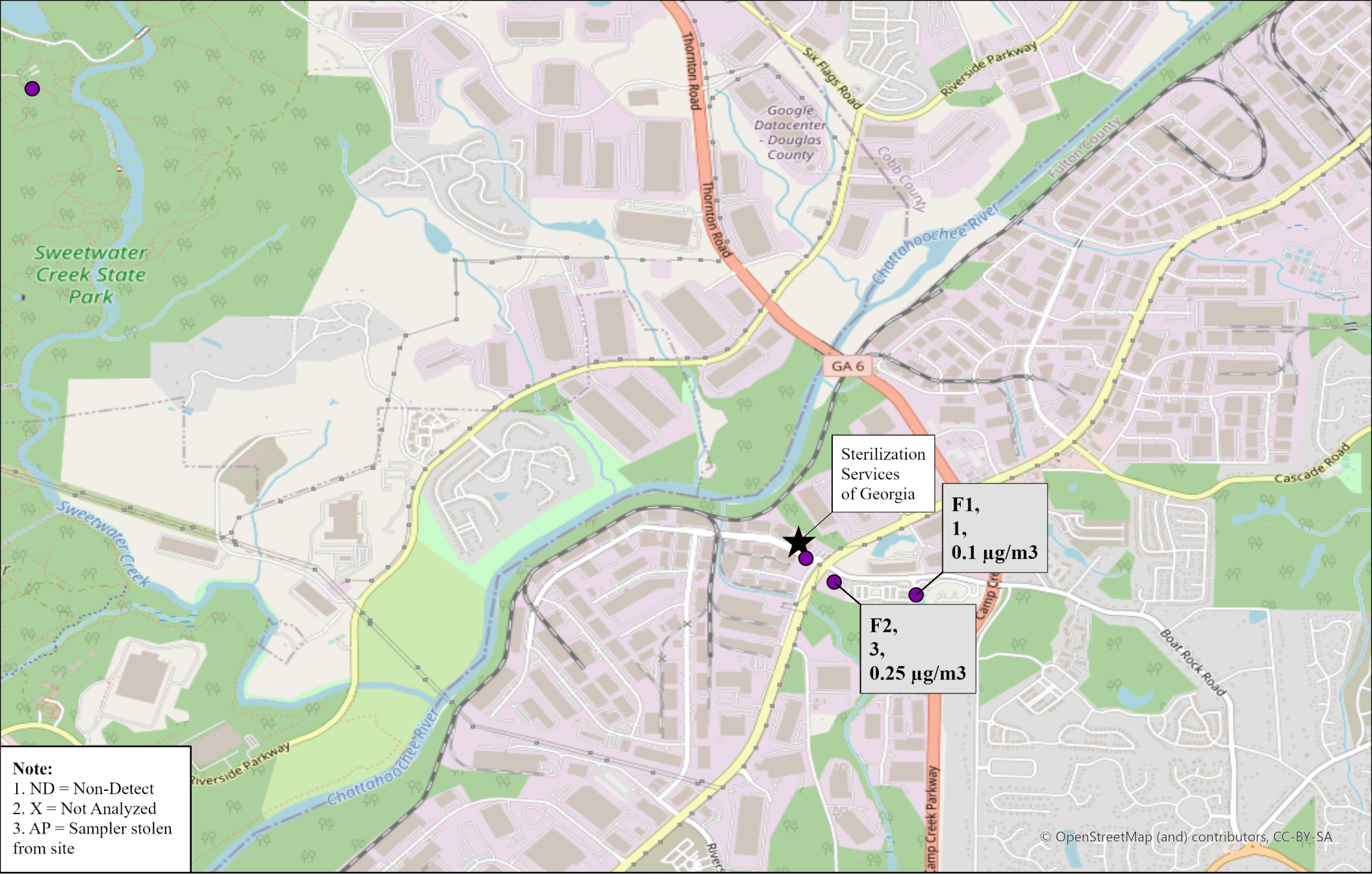


Site ID, Concentration (µg/m3)

Ethylene Oxide Sampling
 Fulton County, GA

05/29/2022
 Sampled By: Georgia Environmental Protection Division
 Analyzed By: Georgia Environmental Protection Division





**Site ID, Number of Samples,
Concentration (µg/m3)**

Ethylene Oxide Sampling
Fulton County, GA

May 2022 Site Average Values
 Note: Not detectable values were included in average calculations as a value of 0.
 Sampled By: Georgia Environmental Protection Division
 Analyzed By: Georgia Environmental Protection Division

