



February 1, 2023

MEMORANDUM

To: Karen Hays, Air Branch Chief *KH*

Through: James Boylan, Assistant Branch Chief

Through: DeAnna Oser, Ambient Monitoring Program Manager

From: Jaime Gore, Operations 1 Unit Manager

RE: Fulton – November 6 – 30, 2021, Sampling Results for Ethylene Oxide

Samples of Ethylene Oxide (EtO) were collected during the period of November 6 – November 30, 2021, by the Ambient Monitoring Program in the Fulton area to characterize the EtO concentration. Each of the samples were sent to the Georgia Environmental Protection Division Laboratory (EPD) for analysis. The Qualifier code of “2” was given to samples to indicate that the collection deviated from established procedures, but the integrity of the sample was not compromised.

Location	Date	Qualifier	EtO Concentration (µg/m ³)
F2	11/06/2021	2	0.27
F2	11/18/2021	2	0.99
F2	11/30/2021	2	0.32
F2-QA	11/06/2021	2	0.33
F1-SA	11/18/2021	2	0.38

If you have any questions, please let me know.

JCG

**GEORGIA DEPARTMENT OF NATURAL RESOURCES
ENVIRONMENTAL PROTECTION DIVISION**

5804 Peachtree Corners East, Norcross, GA 30092-3403
(678) 248-7383

LABORATORY REPORT

TO: Ga EPD Air Program EPD Air Prot Ambient Monitoring 4244 International Pkwy Ste 120 Atlanta, GA 30354	Date Collected: 11/6/2021 Time Collected: 0:00 Sample Collector: J. BRYANT Chlorination: Sample Type: Received By: HZ
	Date Received: 11/30/2021 Time Received: 11:53 AM Project: DATA STUDY Reporting Date: 1/18/2022 Received Temperature: 21.5 °C
Sample ID: AK89007 Facility Name: COBB S2 QA Site ID: S2-QA Location ID: QCCAN Location Descr:	

ANALYTE	PARAMETER CODE	EPA NOTE	METHOD	RESULT	UNITS	QUALIFIER RL	ANALYSIS		MCL or QC Range
							ANALYST	DATE	
ETO by EPA Method TO-15 QC Batch 193943									
Bromofluorobenzene(Surrogate QC Std.)			EPA TO-15	10.3852	ppbV		KL	11/30/2021	8 to 12
Ethylene Oxide			EPA TO-15	0.0920	ppbV	0.016	KL	11/30/2021	
ETO Results by EPA Method TO-15									
Bromofluorobenzene(Surrogate QC Std.)			EPA TO-15	74.2855	ug/m3		KL	11/30/2021	57.22 to 85.84
Ethylene Oxide			EPA TO-15	0.1658	ug/m3	0.0288	KL	11/30/2021	

COMMENTS: \$ETO received in the lab at 3 in Hg.

ug/L: micrograms/liter
 mg/L: milligrams/liter
 mg/kg: milligrams/kilogram
 ug/kg: micrograms/kilogram
 ug/g: micrograms/gram
 ppm: parts per million
 ppb: parts per billion
 org/L: organisms/liter

<: less than
 MCL: Maximum Contaminant Level
 RL: Reporting Limit
 LSPC: result less than lower specification
 USPC: result greater than upper specification
 TIE: Tentatively Identified or Estimated
 VIOL: Violation (result exceeds MCL)

Laboratory Contacts:

Lab Director: Mark Tolbert 470-524-0577
 Inorganics: Carmen Pyles 470-524-0629
 Metals: Shene Jones 470-524-0544
 Organics: Mary Bowman 470-524-0639
 GC Mass Spec: Ralph Schulz 470-524-0684
 Microbiology: Mary Bowman 470-524-0709

**GEORGIA DEPARTMENT OF NATURAL RESOURCES
ENVIRONMENTAL PROTECTION DIVISION**

5804 Peachtree Corners East, Norcross, GA 30092-3403
(678) 248-7383

LABORATORY REPORT

TO: Ga EPD Air Program EPD Air Prot Ambient Monitoring 4244 International Pkwy Ste 120 Atlanta, GA 30354	Date Collected: 11/6/2021 Time Collected: 0:00 Sample Collector: J. BRYANT Chlorination: Sample Type: Received By: HZ
	Date Received: 11/30/2021 Time Received: 11:53 AM Project: DATA STUDY Reporting Date: 1/18/2022 Received Temperature: 19.9 °C
Sample ID: AK89008 Facility Name: COBB S2 Site ID: S2 Location ID: Location Descr:	

ANALYTE	PARAMETER CODE	EPA NOTE	METHOD	RESULT	UNITS	QUALIFIER RL	ANALYSIS		MCL or QC Range
							ANALYST	DATE	
ETO by EPA Method TO-15 QC Batch 193943									
Bromofluorobenzene(Surrogate QC Std.)			EPA TO-15	10.3898	ppbV		KL	11/30/2021	8 to 12
Ethylene Oxide			EPA TO-15	0.1234	ppbV	0.016	KL	11/30/2021	
ETO Results by EPA Method TO-15									
Bromofluorobenzene(Surrogate QC Std.)			EPA TO-15	74.3184	ug/m3		KL	11/30/2021	57.22 to 85.84
Ethylene Oxide			EPA TO-15	0.2224	ug/m3	0.0288	KL	11/30/2021	

COMMENTS: \$ETO received in the lab at 10 in Hg.

ug/L: micrograms/liter
 mg/L: milligrams/liter
 mg/kg: milligrams/kilogram
 ug/kg: micrograms/kilogram
 ug/g: micrograms/gram
 ppm: parts per million
 ppb: parts per billion
 org/L: organisms/liter

<: less than
 MCL: Maximum Contaminant Level
 RL: Reporting Limit
 LSPC: result less than lower specification
 USPC: result greater than upper specification
 TIE: Tentatively Identified or Estimated
 VIOL: Violation (result exceeds MCL)

Laboratory Contacts:

Lab Director: Mark Tolbert 470-524-0577
 Inorganics: Carmen Pyles 470-524-0629
 Metals: Shene Jones 470-524-0544
 Organics: Mary Bowman 470-524-0639
 GC Mass Spec: Ralph Schulz 470-524-0684
 Microbiology: Mary Bowman 470-524-0709

**GEORGIA DEPARTMENT OF NATURAL RESOURCES
ENVIRONMENTAL PROTECTION DIVISION**

5804 Peachtree Corners East, Norcross, GA 30092-3403
(678) 248-7383

LABORATORY REPORT

TO: Ga EPD Air Program EPD Air Prot Ambient Monitoring 4244 International Pkwy Ste 120 Atlanta, GA 30354	Date Collected: 11/6/2021 Time Collected: 0:00 Sample Collector: J. BRYANT Chlorination: Sample Type: Received By: HZ
	Date Received: 11/30/2021 Time Received: 11:53 AM Project: DATA STUDY Reporting Date: 1/18/2022 Received Temperature: 23.5 °C
Sample ID: AK89009 Facility Name: COVINGTON C2 QA Site ID: C2-QA Location ID: Location Descr:	

ANALYTE	PARAMETER CODE	EPA NOTE	METHOD	RESULT	UNITS	QUALIFIER RL	ANALYSIS		MCL or QC Range
							ANALYST	DATE	
ETO by EPA Method TO-15 QC Batch 193943									
Bromofluorobenzene(Surrogate QC Std.)			EPA TO-15	9.7678	ppbV		KL	11/30/2021	8 to 12
Ethylene Oxide			EPA TO-15	0.0930	ppbV	0.016	KL	11/30/2021	
ETO Results by EPA Method TO-15									
Bromofluorobenzene(Surrogate QC Std.)			EPA TO-15	69.8692	ug/m3		KL	11/30/2021	57.22 to 85.84
Ethylene Oxide			EPA TO-15	0.1676	ug/m3	0.0288	KL	11/30/2021	

COMMENTS: \$ETO received in the lab at 5 in Hg.

ug/L: micrograms/liter
 mg/L: milligrams/liter
 mg/kg: milligrams/kilogram
 ug/kg: micrograms/kilogram
 ug/g: micrograms/gram
 ppm: parts per million
 ppb: parts per billion
 org/L: organisms/liter

<: less than
 MCL: Maximum Contaminant Level
 RL: Reporting Limit
 LSPC: result less than lower specification
 USPC: result greater than upper specification
 TIE: Tentatively Identified or Estimated
 VIOL: Violation (result exceeds MCL)

Laboratory Contacts:

Lab Director: Mark Tolbert 470-524-0577
 Inorganics: Carmen Pyles 470-524-0629
 Metals: Shene Jones 470-524-0544
 Organics: Mary Bowman 470-524-0639
 GC Mass Spec: Ralph Schulz 470-524-0684
 Microbiology: Mary Bowman 470-524-0709

**GEORGIA DEPARTMENT OF NATURAL RESOURCES
ENVIRONMENTAL PROTECTION DIVISION**

5804 Peachtree Corners East, Norcross, GA 30092-3403
(678) 248-7383

LABORATORY REPORT

TO: Ga EPD Air Program EPD Air Prot Ambient Monitoring 4244 International Pkwy Ste 120 Atlanta, GA 30354	Date Collected: 11/6/2021 Time Collected: 0:00 Sample Collector: J. BRYANT Chlorination: Sample Type: Received By: HZ
	Date Received: 11/30/2021 Time Received: 11:53 AM Project: DATA STUDY Reporting Date: 1/18/2022 Received Temperature: 21.9 °C
Sample ID: AK89010 Facility Name: COVINGTON C2 Site ID: C2 Location ID: Location Descr:	

ANALYTE	PARAMETER CODE	EPA NOTE	METHOD	RESULT	UNITS	QUALIFIER RL	ANALYSIS		MCL or QC Range
							ANALYST	DATE	
ETO by EPA Method TO-15 QC Batch 193943									
Bromofluorobenzene(Surrogate QC Std.)			EPA TO-15	10.3840	ppbV		KL	11/30/2021	8 to 12
Ethylene Oxide			EPA TO-15	0.0941	ppbV	0.016	KL	11/30/2021	
ETO Results by EPA Method TO-15									
Bromofluorobenzene(Surrogate QC Std.)			EPA TO-15	74.2769	ug/m3		KL	11/30/2021	57.22 to 85.84
Ethylene Oxide			EPA TO-15	0.1696	ug/m3	0.0288	KL	11/30/2021	

COMMENTS: \$ETO received in the lab at 4 in Hg.

ug/L: micrograms/liter
 mg/L: milligrams/liter
 mg/kg: milligrams/kilogram
 ug/kg: micrograms/kilogram
 ug/g: micrograms/gram
 ppm: parts per million
 ppb: parts per billion
 org/L: organisms/liter

<: less than
 MCL: Maximum Contaminant Level
 RL: Reporting Limit
 LSPC: result less than lower specification
 USPC: result greater than upper specification
 TIE: Tentatively Identified or Estimated
 VIOL: Violation (result exceeds MCL)

Laboratory Contacts:

Lab Director: Mark Tolbert 470-524-0577
 Inorganics: Carmen Pyles 470-524-0629
 Metals: Shene Jones 470-524-0544
 Organics: Mary Bowman 470-524-0639
 GC Mass Spec: Ralph Schulz 470-524-0684
 Microbiology: Mary Bowman 470-524-0709

**GEORGIA DEPARTMENT OF NATURAL RESOURCES
ENVIRONMENTAL PROTECTION DIVISION**

5804 Peachtree Corners East, Norcross, GA 30092-3403
(678) 248-7383

LABORATORY REPORT

TO: Ga EPD Air Program EPD Air Prot Ambient Monitoring 4244 International Pkwy Ste 120 Atlanta, GA 30354	Date Collected: 11/6/2021 Time Collected: 0:00 Sample Collector: J. BRYANT Chlorination: Sample Type: Received By: HZ
	Date Received: 11/30/2021 Time Received: 11:53 AM Project: DATA STUDY Reporting Date: 1/18/2022 Received Temperature: 23.9 °C
Sample ID: AK89012 Facility Name: FULTON F2 QA Site ID: F2-QA Location ID: Location Descr:	

ANALYTE	PARAMETER CODE	EPA NOTE	METHOD	RESULT	UNITS	QUALIFIER RL	ANALYSIS		MCL or QC Range
							ANALYST	DATE	
ETO by EPA Method TO-15 QC Batch 193943									
Bromofluorobenzene(Surrogate QC Std.)			EPA TO-15	10.7277	ppbV		KL	11/30/2021	8 to 12
Ethylene Oxide			EPA TO-15	0.1809	ppbV	0.016	KL	11/30/2021	
ETO Results by EPA Method TO-15									
Bromofluorobenzene(Surrogate QC Std.)			EPA TO-15	76.7354	ug/m3		KL	11/30/2021	57.22 to 85.84
Ethylene Oxide			EPA TO-15	0.3261	ug/m3	0.0288	KL	11/30/2021	

COMMENTS: \$ETO received in the lab at 6 in Hg.

ug/L: micrograms/liter
 mg/L: milligrams/liter
 mg/kg: milligrams/kilogram
 ug/kg: micrograms/kilogram
 ug/g: micrograms/gram
 ppm: parts per million
 ppb: parts per billion
 org/L: organisms/liter

<: less than
 MCL: Maximum Contaminant Level
 RL: Reporting Limit
 LSPC: result less than lower specification
 USPC: result greater than upper specification
 TIE: Tentatively Identified or Estimated
 VIOL: Violation (result exceeds MCL)

Laboratory Contacts:

Lab Director: Mark Tolbert 470-524-0577
 Inorganics: Carmen Pyles 470-524-0629
 Metals: Shene Jones 470-524-0544
 Organics: Mary Bowman 470-524-0639
 GC Mass Spec: Ralph Schulz 470-524-0684
 Microbiology: Mary Bowman 470-524-0709

**GEORGIA DEPARTMENT OF NATURAL RESOURCES
ENVIRONMENTAL PROTECTION DIVISION**

5804 Peachtree Corners East, Norcross, GA 30092-3403
(678) 248-7383

LABORATORY REPORT

TO: Ga EPD Air Program EPD Air Prot Ambient Monitoring 4244 International Pkwy Ste 120 Atlanta, GA 30354	Date Collected: 11/6/2021 Time Collected: 0:00 Sample Collector: J. BRYANT Chlorination: Sample Type: Received By: HZ
	Date Received: 11/30/2021 Time Received: 11:53 AM Project: DATA STUDY Reporting Date: 1/18/2022 Received Temperature: 23.6 °C
Sample ID: AK89013 Facility Name: FULTON F2 Site ID: F2 Location ID: Location Descr:	

ANALYTE	PARAMETER CODE	EPA NOTE	METHOD	RESULT	UNITS	QUALIFIER RL	ANALYSIS		MCL or QC Range
							ANALYST	DATE	
ETO by EPA Method TO-15 QC Batch 193943									
Bromofluorobenzene(Surrogate QC Std.)			EPA TO-15	9.3154	ppbV		KL	11/30/2021	8 to 12
Ethylene Oxide			EPA TO-15	0.1492	ppbV	0.016	KL	11/30/2021	
ETO Results by EPA Method TO-15									
Bromofluorobenzene(Surrogate QC Std.)			EPA TO-15	66.6332	ug/m3		KL	11/30/2021	57.22 to 85.84
Ethylene Oxide			EPA TO-15	0.2689	ug/m3	0.0288	KL	11/30/2021	

COMMENTS: \$ETO received in the lab at 9.5 in Hg.

ug/L: micrograms/liter
 mg/L: milligrams/liter
 mg/kg: milligrams/kilogram
 ug/kg: micrograms/kilogram
 ug/g: micrograms/gram
 ppm: parts per million
 ppb: parts per billion
 org/L: organisms/liter

<: less than
 MCL: Maximum Contaminant Level
 RL: Reporting Limit
 LSPC: result less than lower specification
 USPC: result greater than upper specification
 TIE: Tentatively Identified or Estimated
 VIOL: Violation (result exceeds MCL)

Laboratory Contacts:

Lab Director: Mark Tolbert 470-524-0577
 Inorganics: Carmen Pyles 470-524-0629
 Metals: Shene Jones 470-524-0544
 Organics: Mary Bowman 470-524-0639
 GC Mass Spec: Ralph Schulz 470-524-0684
 Microbiology: Mary Bowman 470-524-0709

**GEORGIA DEPARTMENT OF NATURAL RESOURCES
ENVIRONMENTAL PROTECTION DIVISION**

5804 Peachtree Corners East, Norcross, GA 30092-3403
(678) 248-7383

LABORATORY REPORT

TO: Ga EPD Air Program EPD Air Prot Ambient Monitoring 4244 International Pkwy Ste 120 Atlanta, GA 30354	Date Collected: 11/12/2021 Time Collected: 0:00 Sample Collector: H. STREET Canister Number: 110342 Canister Cleaned: 10/19/2021 Received By: HZ
	Date Received: 11/16/2021 Time Received: 9:32 AM Project: AIR Reporting Date: 1/18/2022 Received Temperature: 22.4 °C
Sample ID: AK89014 Facility Name: SOUTH DEKALB QA Site ID: 013-089-0002 Location ID: Location Descr:	

ANALYTE	PARAMETER CODE	EPA NOTE	METHOD	RESULT	UNITS	QUALIFIER RL	ANALYSIS		MCL or QC Range
							ANALYST	DATE	
ETO by EPA Method TO-15 QC Batch 193808									
Bromofluorobenzene(Surrogate QC Std.)			EPA TO-15	10.7721	ppbV		KL	11/16/2021	8 to 12
Ethylene Oxide			EPA TO-15	0.1051	ppbV	0.016	KL	11/16/2021	
ETO Results by EPA Method TO-15									
Bromofluorobenzene(Surrogate QC Std.)			EPA TO-15	77.053	ug/m3		KL	11/16/2021	57.22 to 85.84
Ethylene Oxide			EPA TO-15	0.1894	ug/m3	0.0288	KL	11/16/2021	
ETO NATTS QA Replicate Precision									
Ethylene Oxide			EPA TO-15	4.01	%RPD		KL	11/17/2021	25
ETO QA Replicate Result									
Bromofluorobenzene(Surrogate QC Std.)			EPA TO-15	10.7130	ppbV		KL	11/16/2021	8 to 12
Ethylene Oxide			EPA TO-15	0.1094	ppbV		KL	11/16/2021	

COMMENTS: \$ETO received in the lab at 4.6 psi.

ug/L: micrograms/liter
 mg/L: milligrams/liter
 mg/kg: milligrams/kilogram
 ug/kg: micrograms/kilogram
 ug/g: micrograms/gram
 ppm: parts per million
 ppb: parts per billion
 org/L: organisms/liter

<: less than
 MCL: Maximum Contaminant Level
 RL: Reporting Limit
 LSPC: result less than lower specification
 USPC: result greater than upper specification
 TIE: Tentatively Identified or Estimated
 VIOL: Violation (result exceeds MCL)

Laboratory Contacts:

Lab Director: Mark Tolbert 470-524-0577
 Inorganics: Carmen Pyles 470-524-0629
 Metals: Shene Jones 470-524-0544
 Organics: Mary Bowman 470-524-0639
 GC Mass Spec: Ralph Schulz 470-524-0684
 Microbiology: Mary Bowman 470-524-0709

**GEORGIA DEPARTMENT OF NATURAL RESOURCES
ENVIRONMENTAL PROTECTION DIVISION**

5804 Peachtree Corners East, Norcross, GA 30092-3403
(678) 248-7383

LABORATORY REPORT

TO: Ga EPD Air Program EPD Air Prot Ambient Monitoring 4244 International Pkwy Ste 120 Atlanta, GA 30354	Date Collected: 11/6/2021 Time Collected: 0:00 Sample Collector: H. STREET Canister Number: 110257 Canister Cleaned: 10/19/2021 Received By: HZ
	Date Received: 11/9/2021 Time Received: 10:00 AM Project: AIR Reporting Date: 1/18/2022 Received Temperature: 22.9 °C
Sample ID: AK89015 Facility Name: SOUTH DEKALB Site ID: 013-089-0002 Location ID: QCCAN Location Descr:	

ANALYTE	PARAMETER CODE	EPA NOTE	METHOD	RESULT	UNITS	QUALIFIER RL	ANALYSIS		MCL or QC Range
							ANALYST	DATE	
ETO by EPA Method TO-15 QC Batch 193808									
Bromofluorobenzene(Surrogate QC Std.)			EPA TO-15	9.9653	ppbV		KL	11/16/2021	8 to 12
Ethylene Oxide			EPA TO-15	0.0735	ppbV	0.016	KL	11/16/2021	
ETO Results by EPA Method TO-15									
Bromofluorobenzene(Surrogate QC Std.)			EPA TO-15	71.2819	ug/m3		KL	11/16/2021	57.22 to 85.84
Ethylene Oxide			EPA TO-15	0.1325	ug/m3	0.0288	KL	11/16/2021	

COMMENTS: \$ETO received in the lab at 9.4 psi.

ug/L: micrograms/liter mg/L: milligrams/liter mg/kg: milligrams/kilogram ug/kg: micrograms/kilogram ug/g: micrograms/gram ppm: parts per million ppb: parts per billion org/L: organisms/liter	<: less than MCL: Maximum Contaminant Level RL: Reporting Limit LSPC: result less than lower specification USPC: result greater than upper specification TIE: Tentatively Identified or Estimated VIOL: Violation (result exceeds MCL)	Laboratory Contacts: Lab Director: Mark Tolbert 470-524-0577 Inorganics: Carmen Pyles 470-524-0629 Metals: Shene Jones 470-524-0544 Organics: Mary Bowman 470-524-0639 GC Mass Spec: Ralph Schulz 470-524-0684 Microbiology: Mary Bowman 470-524-0709
---	--	--

**GEORGIA DEPARTMENT OF NATURAL RESOURCES
ENVIRONMENTAL PROTECTION DIVISION**

5804 Peachtree Corners East, Norcross, GA 30092-3403
(678) 248-7383

LABORATORY REPORT

TO: Ga EPD Air Program EPD Air Prot Ambient Monitoring 4244 International Pkwy Ste 120 Atlanta, GA 30354	Date Collected: 11/6/2021 Time Collected: 0:00 Sample Collector: C. CULBERT Chlorination: Sample Type: Received By: HZ Date Received: 11/16/2021 Time Received: 9:32 AM Project: DATA STUDY Reporting Date: 1/18/2022
Sample ID: AK89016 Facility Name: GENERAL COFFEE Site ID: 013-069-0002 Location ID: Location Descr:	

ANALYTE	PARAMETER CODE	EPA NOTE	METHOD	RESULT	UNITS	QUALIFIER RL	ANALYSIS		MCL or QC Range
							ANALYST	DATE	
ETO by EPA Method TO-15 QC Batch 193808									
Bromofluorobenzene(Surrogate QC Std.)			EPA TO-15	9.9078	ppbV		KL	11/16/2021	8 to 12
Ethylene Oxide			EPA TO-15	0.0503	ppbV	SQ 0.016	KL	11/16/2021	
ETO Results by EPA Method TO-15									
Bromofluorobenzene(Surrogate QC Std.)			EPA TO-15	70.8706	ug/m3		KL	11/16/2021	57.22 to 85.84
Ethylene Oxide			EPA TO-15	0.0907	ug/m3	SQ 0.0288	KL	11/16/2021	

COMMENTS: \$ETO received in the lab at 21.4 psi.

ug/L: micrograms/liter mg/L: milligrams/liter mg/kg: milligrams/kilogram ug/kg: micrograms/kilogram ug/g: micrograms/gram ppm: parts per million ppb: parts per billion org/L: organisms/liter	<: less than MCL: Maximum Contaminant Level RL: Reporting Limit LSPC: result less than lower specification USPC: result greater than upper specification TIE: Tentatively Identified or Estimated VIOL: Violation (result exceeds MCL)	Laboratory Contacts: Lab Director: Mark Tolbert 470-524-0577 Inorganics: Carmen Pyles 470-524-0629 Metals: Shene Jones 470-524-0544 Organics: Mary Bowman 470-524-0639 GC Mass Spec: Ralph Schulz 470-524-0684 Microbiology: Mary Bowman 470-524-0709
---	--	--

**GEORGIA DEPARTMENT OF NATURAL RESOURCES
ENVIRONMENTAL PROTECTION DIVISION**

5804 Peachtree Corners East, Norcross, GA 30092-3403
(678) 248-7383

LABORATORY REPORT

TO: Ga EPD Air Program EPD Air Prot Ambient Monitoring 4244 International Pkwy Ste 120 Atlanta, GA 30354	Date Collected: 11/18/2021 Time Collected: 0:00 Sample Collector: C. CULBERT Canister Number: 114386 Canister Cleaned: 10/19/2021 Received By: HZ
	Date Received: 11/23/2021 Time Received: 8:07 AM Project: AIR Reporting Date: 1/18/2022 Received Temperature: 19.9 °C
Sample ID: AK89017 Facility Name: GEN. COFFEE Site ID: 013-069-0002 Location ID: Location Descr:	

ANALYTE	PARAMETER CODE	EPA NOTE	METHOD	RESULT	UNITS	QUALIFIER RL	ANALYSIS		MCL or QC Range
							ANALYST	DATE	
ETO by EPA Method TO-15 QC Batch 193943									
Bromofluorobenzene(Surrogate QC Std.)			EPA TO-15	9.6257	ppbV		KL	11/30/2021	8 to 12
Ethylene Oxide			EPA TO-15	0.0513	ppbV	2	0.016	KL	11/30/2021
ETO Results by EPA Method TO-15									
Bromofluorobenzene(Surrogate QC Std.)			EPA TO-15	68.8527	ug/m3		KL	11/30/2021	57.22 to 85.84
Ethylene Oxide			EPA TO-15	0.0925	ug/m3	2	0.0288	KL	11/30/2021

COMMENTS: \$ETO received in the lab at 20.6 psi. Pressure difference of >0.5 psi between receipt from field and receipt in lab.

ug/L: micrograms/liter mg/L: milligrams/liter mg/kg: milligrams/kilogram ug/kg: micrograms/kilogram ug/g: micrograms/gram ppm: parts per million ppb: parts per billion org/L: organisms/liter	<: less than MCL: Maximum Contaminant Level RL: Reporting Limit LSPC: result less than lower specification USPC: result greater than upper specification TIE: Tentatively Identified or Estimated VIOL: Violation (result exceeds MCL)	Laboratory Contacts: Lab Director: Mark Tolbert 470-524-0577 Inorganics: Carmen Pyles 470-524-0629 Metals: Shene Jones 470-524-0544 Organics: Mary Bowman 470-524-0639 GC Mass Spec: Ralph Schulz 470-524-0684 Microbiology: Mary Bowman 470-524-0709
---	--	--

**GEORGIA DEPARTMENT OF NATURAL RESOURCES
ENVIRONMENTAL PROTECTION DIVISION**

5804 Peachtree Corners East, Norcross, GA 30092-3403
(678) 248-7383

LABORATORY REPORT

TO: Ga EPD Air Program EPD Air Prot Ambient Monitoring 4244 International Pkwy Ste 120 Atlanta, GA 30354	Date Collected: 11/12/2021 Time Collected: 0:00 Sample Collector: H. STREET Canister Number: 110322 Canister Cleaned: 10/19/2021 Received By: HZ
	Date Received: 11/16/2021 Time Received: 9:32 AM Project: AIR Reporting Date: 1/18/2022 Received Temperature: 20.9 °C
Sample ID: AK89018 Facility Name: SOUTH DEKALB Site ID: 013-089-0002 Location ID: Location Descr:	

ANALYTE	PARAMETER CODE	EPA NOTE	METHOD	RESULT	UNITS	QUALIFIER RL	ANALYSIS		MCL or QC Range
							ANALYST	DATE	
ETO by EPA Method TO-15 QC Batch 193808									
Bromofluorobenzene(Surrogate QC Std.)			EPA TO-15	10.3065	ppbV		KL	11/16/2021	8 to 12
Ethylene Oxide			EPA TO-15	0.0971	ppbV	0.016	KL	11/16/2021	
ETO Results by EPA Method TO-15									
Bromofluorobenzene(Surrogate QC Std.)			EPA TO-15	73.7225	ug/m3		KL	11/16/2021	57.22 to 85.84
Ethylene Oxide			EPA TO-15	0.175	ug/m3	0.0288	KL	11/16/2021	

COMMENTS: \$ETO received in the lab at 4.8 psi.

ug/L: micrograms/liter
 mg/L: milligrams/liter
 mg/kg: milligrams/kilogram
 ug/kg: micrograms/kilogram
 ug/g: micrograms/gram
 ppm: parts per million
 ppb: parts per billion
 org/L: organisms/liter

<: less than
 MCL: Maximum Contaminant Level
 RL: Reporting Limit
 LSPC: result less than lower specification
 USPC: result greater than upper specification
 TIE: Tentatively Identified or Estimated
 VIOL: Violation (result exceeds MCL)

Laboratory Contacts:

Lab Director: Mark Tolbert 470-524-0577
 Inorganics: Carmen Pyles 470-524-0629
 Metals: Shene Jones 470-524-0544
 Organics: Mary Bowman 470-524-0639
 GC Mass Spec: Ralph Schulz 470-524-0684
 Microbiology: Mary Bowman 470-524-0709

**GEORGIA DEPARTMENT OF NATURAL RESOURCES
ENVIRONMENTAL PROTECTION DIVISION**

5804 Peachtree Corners East, Norcross, GA 30092-3403
(678) 248-7383

LABORATORY REPORT

TO: Ga EPD Air Program EPD Air Prot Ambient Monitoring 4244 International Pkwy Ste 120 Atlanta, GA 30354	Date Collected: 11/18/2021 Time Collected: 0:00 Sample Collector: J. BRYANT Chlorination: Sample Type: Received By: HZ
	Date Received: 11/30/2021 Time Received: 11:53 AM Project: DATA STUDY Reporting Date: 1/18/2022 Received Temperature: 21.9 °C
Sample ID: AK89019 Facility Name: COBB S6 SA Site ID: S6-SA Location ID: Location Descr:	

ANALYTE	PARAMETER CODE	EPA NOTE	METHOD	RESULT	UNITS	QUALIFIER RL	ANALYSIS		MCL or QC Range
							ANALYST	DATE	
ETO by EPA Method TO-15 QC Batch 193970									
Bromofluorobenzene(Surrogate QC Std.)			EPA TO-15	9.7070	ppbV		KL	12/1/2021	8 to 12
Ethylene Oxide			EPA TO-15	0.1371	ppbV	0.016	KL	12/1/2021	
ETO Results by EPA Method TO-15									
Bromofluorobenzene(Surrogate QC Std.)			EPA TO-15	69.4343	ug/m3		KL	12/1/2021	57.22 to 85.84
Ethylene Oxide			EPA TO-15	0.2471	ug/m3	0.0288	KL	12/1/2021	

COMMENTS: \$ETO received in the lab at 6.5 in Hg.

ug/L: micrograms/liter mg/L: milligrams/liter mg/kg: milligrams/kilogram ug/kg: micrograms/kilogram ug/g: micrograms/gram ppm: parts per million ppb: parts per billion org/L: organisms/liter	<: less than MCL: Maximum Contaminant Level RL: Reporting Limit LSPC: result less than lower specification USPC: result greater than upper specification TIE: Tentatively Identified or Estimated VIOL: Violation (result exceeds MCL)	Laboratory Contacts: Lab Director: Mark Tolbert 470-524-0577 Inorganics: Carmen Pyles 470-524-0629 Metals: Shene Jones 470-524-0544 Organics: Mary Bowman 470-524-0639 GC Mass Spec: Ralph Schulz 470-524-0684 Microbiology: Mary Bowman 470-524-0709
---	--	--

**GEORGIA DEPARTMENT OF NATURAL RESOURCES
ENVIRONMENTAL PROTECTION DIVISION**

5804 Peachtree Corners East, Norcross, GA 30092-3403
(678) 248-7383

LABORATORY REPORT

TO: Ga EPD Air Program EPD Air Prot Ambient Monitoring 4244 International Pkwy Ste 120 Atlanta, GA 30354	Date Collected: 11/18/2021 Time Collected: 0:00 Sample Collector: J. BRYANT Chlorination: Sample Type: Received By: HZ
	Date Received: 11/30/2021 Time Received: 11:53 AM Project: DATA STUDY Reporting Date: 1/18/2022 Received Temperature: 24.6 °C
Sample ID: AK89020 Facility Name: COBB S2 Site ID: S2 Location ID: Location Descr:	

ANALYTE	PARAMETER CODE	EPA NOTE	METHOD	RESULT	UNITS	QUALIFIER RL	ANALYSIS		MCL or QC Range
							ANALYST	DATE	
ETO by EPA Method TO-15 QC Batch 193970									
Bromofluorobenzene(Surrogate QC Std.)			EPA TO-15	10.7206	ppbV		KL	12/1/2021	8 to 12
Ethylene Oxide			EPA TO-15	0.1870	ppbV	0.016	KL	12/1/2021	
ETO Results by EPA Method TO-15									
Bromofluorobenzene(Surrogate QC Std.)			EPA TO-15	76.6846	ug/m3		KL	12/1/2021	57.22 to 85.84
Ethylene Oxide			EPA TO-15	0.3371	ug/m3	0.0288	KL	12/1/2021	

COMMENTS: \$ETO received in the lab at 8 in Hg.

ug/L: micrograms/liter
 mg/L: milligrams/liter
 mg/kg: milligrams/kilogram
 ug/kg: micrograms/kilogram
 ug/g: micrograms/gram
 ppm: parts per million
 ppb: parts per billion
 org/L: organisms/liter

<: less than
 MCL: Maximum Contaminant Level
 RL: Reporting Limit
 LSPC: result less than lower specification
 USPC: result greater than upper specification
 TIE: Tentatively Identified or Estimated
 VIOL: Violation (result exceeds MCL)

Laboratory Contacts:

Lab Director: Mark Tolbert 470-524-0577
 Inorganics: Carmen Pyles 470-524-0629
 Metals: Shene Jones 470-524-0544
 Organics: Mary Bowman 470-524-0639
 GC Mass Spec: Ralph Schulz 470-524-0684
 Microbiology: Mary Bowman 470-524-0709

**GEORGIA DEPARTMENT OF NATURAL RESOURCES
ENVIRONMENTAL PROTECTION DIVISION**

5804 Peachtree Corners East, Norcross, GA 30092-3403
(678) 248-7383

LABORATORY REPORT

TO: Ga EPD Air Program EPD Air Prot Ambient Monitoring 4244 International Pkwy Ste 120 Atlanta, GA 30354	Date Collected: 11/18/2021 Time Collected: 0:00 Sample Collector: J. BRYANT Chlorination: Sample Type: Received By: HZ
	Date Received: 11/30/2021 Time Received: 11:53 AM Project: DATA STUDY Reporting Date: 1/18/2022 Received Temperature: 23.9 °C
Sample ID: AK89021 Facility Name: COBB S7 SA Site ID: S7-SA Location ID: Location Descr:	

ANALYTE	PARAMETER CODE	EPA NOTE	METHOD	RESULT	UNITS	QUALIFIER RL	ANALYSIS		MCL or QC Range
							ANALYST	DATE	
ETO by EPA Method TO-15 QC Batch 193970									
Bromofluorobenzene(Surrogate QC Std.)			EPA TO-15	9.4800	ppbV		KL	12/1/2021	8 to 12
Ethylene Oxide			EPA TO-15	0.1325	ppbV	0.016	KL	12/1/2021	
ETO Results by EPA Method TO-15									
Bromofluorobenzene(Surrogate QC Std.)			EPA TO-15	67.8106	ug/m3		KL	12/1/2021	57.22 to 85.84
Ethylene Oxide			EPA TO-15	0.2388	ug/m3	0.0288	KL	12/1/2021	

COMMENTS: \$ETO received in the lab at 6.5 in Hg.

ug/L: micrograms/liter
 mg/L: milligrams/liter
 mg/kg: milligrams/kilogram
 ug/kg: micrograms/kilogram
 ug/g: micrograms/gram
 ppm: parts per million
 ppb: parts per billion
 org/L: organisms/liter

<: less than
 MCL: Maximum Contaminant Level
 RL: Reporting Limit
 LSPC: result less than lower specification
 USPC: result greater than upper specification
 TIE: Tentatively Identified or Estimated
 VIOL: Violation (result exceeds MCL)

Laboratory Contacts:

Lab Director: Mark Tolbert 470-524-0577
 Inorganics: Carmen Pyles 470-524-0629
 Metals: Shene Jones 470-524-0544
 Organics: Mary Bowman 470-524-0639
 GC Mass Spec: Ralph Schulz 470-524-0684
 Microbiology: Mary Bowman 470-524-0709

**GEORGIA DEPARTMENT OF NATURAL RESOURCES
ENVIRONMENTAL PROTECTION DIVISION**

5804 Peachtree Corners East, Norcross, GA 30092-3403
(678) 248-7383

LABORATORY REPORT

TO: Ga EPD Air Program EPD Air Prot Ambient Monitoring 4244 International Pkwy Ste 120 Atlanta, GA 30354	Date Collected: 11/18/2021 Time Collected: 0:00 Sample Collector: J. BRYANT Chlorination: Sample Type: Received By: HZ
	Date Received: 11/30/2021 Time Received: 11:53 AM Project: DATA STUDY Reporting Date: 1/18/2022 Received Temperature: 22.9 °C
Sample ID: AK89022 Facility Name: COVINGTON C7 SA Site ID: C7-SA Location ID: Location Descr:	

ANALYTE	PARAMETER CODE	EPA NOTE	METHOD	RESULT	UNITS	QUALIFIER RL	ANALYSIS		MCL or QC Range
							ANALYST	DATE	
ETO by EPA Method TO-15 QC Batch 193970									
Bromofluorobenzene(Surrogate QC Std.)			EPA TO-15	9.4022	ppbV		KL	12/1/2021	8 to 12
Ethylene Oxide			EPA TO-15	0.0891	ppbV	0.016	KL	12/1/2021	
ETO Results by EPA Method TO-15									
Bromofluorobenzene(Surrogate QC Std.)			EPA TO-15	67.254	ug/m3		KL	12/1/2021	57.22 to 85.84
Ethylene Oxide			EPA TO-15	0.1606	ug/m3	0.0288	KL	12/1/2021	

COMMENTS: \$ETO received in the lab at 5 in Hg.

ug/L: micrograms/liter mg/L: milligrams/liter mg/kg: milligrams/kilogram ug/kg: micrograms/kilogram ug/g: micrograms/gram ppm: parts per million ppb: parts per billion org/L: organisms/liter	<: less than MCL: Maximum Contaminant Level RL: Reporting Limit LSPC: result less than lower specification USPC: result greater than upper specification TIE: Tentatively Identified or Estimated VIOL: Violation (result exceeds MCL)	Laboratory Contacts: Lab Director: Mark Tolbert 470-524-0577 Inorganics: Carmen Pyles 470-524-0629 Metals: Shene Jones 470-524-0544 Organics: Mary Bowman 470-524-0639 GC Mass Spec: Ralph Schulz 470-524-0684 Microbiology: Mary Bowman 470-524-0709
---	--	--

**GEORGIA DEPARTMENT OF NATURAL RESOURCES
ENVIRONMENTAL PROTECTION DIVISION**

5804 Peachtree Corners East, Norcross, GA 30092-3403
(678) 248-7383

LABORATORY REPORT

TO: Ga EPD Air Program EPD Air Prot Ambient Monitoring 4244 International Pkwy Ste 120 Atlanta, GA 30354	Date Collected: 11/18/2021 Time Collected: 0:00 Sample Collector: J. BRYANT Chlorination: Sample Type: Received By: HZ
	Date Received: 11/30/2021 Time Received: 11:53 AM Project: DATA STUDY Reporting Date: 1/18/2022 Received Temperature: 21.9 °C
Sample ID: AK89841 Facility Name: COVINGTON C2 Site ID: C2 Location ID: QCCAN Location Descr:	

ANALYTE	PARAMETER CODE	EPA NOTE	METHOD	RESULT	UNITS	QUALIFIER RL	ANALYSIS		MCL or QC Range
							ANALYST	DATE	
ETO by EPA Method TO-15 QC Batch 193970									
Bromofluorobenzene(Surrogate QC Std.)			EPA TO-15	10.5880	ppbV		KL	12/1/2021	8 to 12
Ethylene Oxide			EPA TO-15	0.1313	ppbV	0.016	KL	12/1/2021	
ETO Results by EPA Method TO-15									
Bromofluorobenzene(Surrogate QC Std.)			EPA TO-15	75.7361	ug/m3		KL	12/1/2021	57.22 to 85.84
Ethylene Oxide			EPA TO-15	0.2367	ug/m3	0.0288	KL	12/1/2021	

COMMENTS: \$ETO received in the lab at 5 in Hg.

ug/L: micrograms/liter
 mg/L: milligrams/liter
 mg/kg: milligrams/kilogram
 ug/kg: micrograms/kilogram
 ug/g: micrograms/gram
 ppm: parts per million
 ppb: parts per billion
 org/L: organisms/liter

<: less than
 MCL: Maximum Contaminant Level
 RL: Reporting Limit
 LSPC: result less than lower specification
 USPC: result greater than upper specification
 TIE: Tentatively Identified or Estimated
 VIOL: Violation (result exceeds MCL)

Laboratory Contacts:

Lab Director: Mark Tolbert 470-524-0577
 Inorganics: Carmen Pyles 470-524-0629
 Metals: Shene Jones 470-524-0544
 Organics: Mary Bowman 470-524-0639
 GC Mass Spec: Ralph Schulz 470-524-0684
 Microbiology: Mary Bowman 470-524-0709

**GEORGIA DEPARTMENT OF NATURAL RESOURCES
ENVIRONMENTAL PROTECTION DIVISION**

5804 Peachtree Corners East, Norcross, GA 30092-3403
(678) 248-7383

LABORATORY REPORT

TO: Ga EPD Air Program EPD Air Prot Ambient Monitoring 4244 International Pkwy Ste 120 Atlanta, GA 30354	Date Collected: 11/18/2021 Time Collected: 0:00 Sample Collector: J. BRYANT Chlorination: Sample Type: Received By: HZ
	Date Received: 11/30/2021 Time Received: 11:53 AM Project: DATA STUDY Reporting Date: 1/18/2022 Received Temperature: 22.9 °C
Sample ID: AK89842 Facility Name: FULTON F2 Site ID: F2 Location ID: Location Descr:	

ANALYTE	PARAMETER CODE	EPA NOTE	METHOD	RESULT	UNITS	QUALIFIER RL	ANALYSIS		MCL or QC Range
							ANALYST	DATE	
ETO by EPA Method TO-15 QC Batch 193970									
Bromofluorobenzene(Surrogate QC Std.)			EPA TO-15	10.8810	ppbV		KL	12/1/2021	8 to 12
Ethylene Oxide			EPA TO-15	0.5508	ppbV	0.016	KL	12/1/2021	
ETO Results by EPA Method TO-15									
Bromofluorobenzene(Surrogate QC Std.)			EPA TO-15	77.8319	ug/m3		KL	12/1/2021	57.22 to 85.84
Ethylene Oxide			EPA TO-15	0.9928	ug/m3	0.0288	KL	12/1/2021	

COMMENTS: \$ETO received in the lab at 10 in Hg.

ug/L: micrograms/liter
 mg/L: milligrams/liter
 mg/kg: milligrams/kilogram
 ug/kg: micrograms/kilogram
 ug/g: micrograms/gram
 ppm: parts per million
 ppb: parts per billion
 org/L: organisms/liter

<: less than
 MCL: Maximum Contaminant Level
 RL: Reporting Limit
 LSPC: result less than lower specification
 USPC: result greater than upper specification
 TIE: Tentatively Identified or Estimated
 VIOL: Violation (result exceeds MCL)

Laboratory Contacts:

Lab Director: Mark Tolbert 470-524-0577
 Inorganics: Carmen Pyles 470-524-0629
 Metals: Shene Jones 470-524-0544
 Organics: Mary Bowman 470-524-0639
 GC Mass Spec: Ralph Schulz 470-524-0684
 Microbiology: Mary Bowman 470-524-0709

**GEORGIA DEPARTMENT OF NATURAL RESOURCES
ENVIRONMENTAL PROTECTION DIVISION**

5804 Peachtree Corners East, Norcross, GA 30092-3403
(678) 248-7383

LABORATORY REPORT

TO: Ga EPD Air Program EPD Air Prot Ambient Monitoring 4244 International Pkwy Ste 120 Atlanta, GA 30354	Date Collected: 11/18/2021 Time Collected: 0:00 Sample Collector: J. BRYANT Chlorination: Sample Type: Received By: HZ
	Date Received: 11/30/2021 Time Received: 11:53 AM Project: DATA STUDY Reporting Date: 1/18/2022 Received Temperature: 24.6 °C
Sample ID: AK89843 Facility Name: FULTON F1 SA Site ID: F1-SA Location ID: Location Descr:	

ANALYTE	PARAMETER CODE	EPA NOTE	METHOD	RESULT	UNITS	QUALIFIER RL	ANALYSIS		MCL or QC Range
							ANALYST	DATE	
ETO by EPA Method TO-15 QC Batch 193970									
Bromofluorobenzene(Surrogate QC Std.)			EPA TO-15	10.2681	ppbV		KL	12/1/2021	8 to 12
Ethylene Oxide			EPA TO-15	0.2121	ppbV	0.016	KL	12/1/2021	
ETO Results by EPA Method TO-15									
Bromofluorobenzene(Surrogate QC Std.)			EPA TO-15	73.4478	ug/m3		KL	12/1/2021	57.22 to 85.84
Ethylene Oxide			EPA TO-15	0.3823	ug/m3	0.0288	KL	12/1/2021	

COMMENTS: \$ETO received in the lab at 5 in Hg.

ug/L: micrograms/liter mg/L: milligrams/liter mg/kg: milligrams/kilogram ug/kg: micrograms/kilogram ug/g: micrograms/gram ppm: parts per million ppb: parts per billion org/L: organisms/liter	<: less than MCL: Maximum Contaminant Level RL: Reporting Limit LSPC: result less than lower specification USPC: result greater than upper specification TIE: Tentatively Identified or Estimated VIOL: Violation (result exceeds MCL)	Laboratory Contacts: Lab Director: Mark Tolbert 470-524-0577 Inorganics: Carmen Pyles 470-524-0629 Metals: Shene Jones 470-524-0544 Organics: Mary Bowman 470-524-0639 GC Mass Spec: Ralph Schulz 470-524-0684 Microbiology: Mary Bowman 470-524-0709
---	--	--

**GEORGIA DEPARTMENT OF NATURAL RESOURCES
ENVIRONMENTAL PROTECTION DIVISION**

5804 Peachtree Corners East, Norcross, GA 30092-3403
(678) 248-7383

LABORATORY REPORT

TO: Ga EPD Air Program EPD Air Prot Ambient Monitoring 4244 International Pkwy Ste 120 Atlanta, GA 30354	Date Collected: 11/18/2021 Time Collected: 0:00 Sample Collector: H. STREET Canister Number: 114313 Canister Cleaned: 11/1/2021 Received By: HZ Date Received: 11/22/2021 Time Received: 11:19 AM Project: AIR Reporting Date: 1/18/2022 Received Temperature: 20.4 °C
Sample ID: AK89844 Facility Name: SOUTH DEKALB Site ID: 013-089-0002 Location ID: Location Descr:	

ANALYTE	PARAMETER CODE	EPA NOTE	METHOD	RESULT	UNITS	QUALIFIER RL	ANALYSIS		MCL or QC Range
							ANALYST	DATE	
ETO by EPA Method TO-15 QC Batch 193943									
Bromofluorobenzene(Surrogate QC Std.)			EPA TO-15	9.9692	ppbV		KL	11/30/2021	8 to 12
Ethylene Oxide			EPA TO-15	0.1168	ppbV	0.016	KL	11/30/2021	
ETO Results by EPA Method TO-15									
Bromofluorobenzene(Surrogate QC Std.)			EPA TO-15	71.3098	ug/m3		KL	11/30/2021	57.22 to 85.84
Ethylene Oxide			EPA TO-15	0.2105	ug/m3	0.0288	KL	11/30/2021	

COMMENTS: \$ETO received in the lab at 5.8 psi.

ug/L: micrograms/liter mg/L: milligrams/liter mg/kg: milligrams/kilogram ug/kg: micrograms/kilogram ug/g: micrograms/gram ppm: parts per million ppb: parts per billion org/L: organisms/liter	<: less than MCL: Maximum Contaminant Level RL: Reporting Limit LSPC: result less than lower specification USPC: result greater than upper specification TIE: Tentatively Identified or Estimated VIOL: Violation (result exceeds MCL)	Laboratory Contacts: Lab Director: Mark Tolbert 470-524-0577 Inorganics: Carmen Pyles 470-524-0629 Metals: Shene Jones 470-524-0544 Organics: Mary Bowman 470-524-0639 GC Mass Spec: Ralph Schulz 470-524-0684 Microbiology: Mary Bowman 470-524-0709
---	--	--

**GEORGIA DEPARTMENT OF NATURAL RESOURCES
ENVIRONMENTAL PROTECTION DIVISION**

5804 Peachtree Corners East, Norcross, GA 30092-3403
(678) 248-7383

LABORATORY REPORT

TO: Ga EPD Air Program EPD Air Prot Ambient Monitoring 4244 International Pkwy Ste 120 Atlanta, GA 30354	Date Collected: 11/30/2021 Time Collected: 0:00 Sample Collector: C. CULBERT Chlorination: Sample Type: Received By: HZ
	Date Received: 12/10/2021 Time Received: 8:10 AM Project: DATA STUDY Reporting Date: 1/18/2022 Received Temperature: 14.3 °C
Sample ID: AK89846 Facility Name: DOUGLAS - GENERAL COFFEE Site ID: 013-069-0002 Location ID: Location Descr:	

ANALYTE	PARAMETER CODE	EPA NOTE	METHOD	RESULT	UNITS	QUALIFIER RL	ANALYSIS		MCL or QC Range
							ANALYST	DATE	
ETO by EPA Method TO-15 QC Batch 194261									
Bromofluorobenzene(Surrogate QC Std.)			EPA TO-15	9.8673	ppbV		KL	12/15/2021	8 to 12
Ethylene Oxide			EPA TO-15	0.0704	ppbV	SQ 2	0.0232	KL	12/15/2021
ETO Results by EPA Method TO-15									
Bromofluorobenzene(Surrogate QC Std.)			EPA TO-15	70.5809	ug/m3		KL	12/15/2021	57.22 to 85.84
Ethylene Oxide			EPA TO-15	0.1269	ug/m3	SQ 2	0.0418	KL	12/15/2021

COMMENTS: \$ETO received in the lab at 22.6 psi. Pressure difference of >0.5 psi between receipt from field and receipt in lab.

ug/L: micrograms/liter mg/L: milligrams/liter mg/kg: milligrams/kilogram ug/kg: micrograms/kilogram ug/g: micrograms/gram ppm: parts per million ppb: parts per billion org/L: organisms/liter	<: less than MCL: Maximum Contaminant Level RL: Reporting Limit LSPC: result less than lower specification USPC: result greater than upper specification TIE: Tentatively Identified or Estimated VIOL: Violation (result exceeds MCL)	Laboratory Contacts: Lab Director: Mark Tolbert 470-524-0577 Inorganics: Carmen Pyles 470-524-0629 Metals: Shene Jones 470-524-0544 Organics: Mary Bowman 470-524-0639 GC Mass Spec: Ralph Schulz 470-524-0684 Microbiology: Mary Bowman 470-524-0709
---	--	--

**GEORGIA DEPARTMENT OF NATURAL RESOURCES
ENVIRONMENTAL PROTECTION DIVISION**

5804 Peachtree Corners East, Norcross, GA 30092-3403
(678) 248-7383

LABORATORY REPORT

TO: Ga EPD Air Program EPD Air Prot Ambient Monitoring 4244 International Pkwy Ste 120 Atlanta, GA 30354	Date Collected: 11/24/2021 Time Collected: 0:00 Sample Collector: H. STREET Canister Number: 114331 Canister Cleaned: 11/1/2021 Received By: HZ
	Date Received: 11/29/2021 Time Received: 11:20 AM Project: AIR Reporting Date: 1/18/2022 Received Temperature: 20.5 °C
Sample ID: AK89847 Facility Name: south dekalb Site ID: 013-089-0002 Location ID: Location Descr:	

ANALYTE	PARAMETER CODE	EPA NOTE	METHOD	RESULT	UNITS	QUALIFIER RL	ANALYSIS		MCL or QC Range
							ANALYST	DATE	
ETO by EPA Method TO-15 QC Batch 193970									
Bromofluorobenzene(Surrogate QC Std.)			EPA TO-15	9.7616	ppbV		KL	12/1/2021	8 to 12
Ethylene Oxide			EPA TO-15	0.1014	ppbV	0.016	KL	12/1/2021	
ETO Results by EPA Method TO-15									
Bromofluorobenzene(Surrogate QC Std.)			EPA TO-15	69.8248	ug/m3		KL	12/1/2021	57.22 to 85.84
Ethylene Oxide			EPA TO-15	0.1828	ug/m3	0.0288	KL	12/1/2021	

COMMENTS: \$ETO received in the lab at 5.2 psi.

ug/L: micrograms/liter
 mg/L: milligrams/liter
 mg/kg: milligrams/kilogram
 ug/kg: micrograms/kilogram
 ug/g: micrograms/gram
 ppm: parts per million
 ppb: parts per billion
 org/L: organisms/liter

<: less than
 MCL: Maximum Contaminant Level
 RL: Reporting Limit
 LSPC: result less than lower specification
 USPC: result greater than upper specification
 TIE: Tentatively Identified or Estimated
 VIOL: Violation (result exceeds MCL)

Laboratory Contacts:

Lab Director: Mark Tolbert 470-524-0577
 Inorganics: Carmen Pyles 470-524-0629
 Metals: Shene Jones 470-524-0544
 Organics: Mary Bowman 470-524-0639
 GC Mass Spec: Ralph Schulz 470-524-0684
 Microbiology: Mary Bowman 470-524-0709

**GEORGIA DEPARTMENT OF NATURAL RESOURCES
ENVIRONMENTAL PROTECTION DIVISION**

5804 Peachtree Corners East, Norcross, GA 30092-3403
(678) 248-7383

LABORATORY REPORT

TO: Ga EPD Air Program EPD Air Prot Ambient Monitoring 4244 International Pkwy Ste 120 Atlanta, GA 30354	Date Collected: 11/29/2021 Time Collected: 0:00 Sample Collector: J. BRYANT Chlorination: Sample Type: Received By: HZ
	Date Received: 12/8/2021 Time Received: 11:35 AM Project: DATA STUDY Reporting Date: 1/18/2022 Received Temperature: 20.6 °C
Sample ID: AK89849 Facility Name: COBB S2 FB Site ID: S2 Location ID: QCCAN Location Descr:	

ANALYTE	PARAMETER CODE	EPA NOTE	METHOD	RESULT	UNITS	QUALIFIER RL	ANALYSIS		MCL or QC Range
							ANALYST	DATE	
ETO by EPA Method TO-15 QC Batch 194261									
Bromofluorobenzene(Surrogate QC Std.)			EPA TO-15	10.0629	ppbV		KL	12/15/2021	8 to 12
Ethylene Oxide			EPA TO-15	0	ppbV	ND 0.0232	KL	12/15/2021	
ETO Results by EPA Method TO-15									
Bromofluorobenzene(Surrogate QC Std.)			EPA TO-15	71.98	ug/m3		KL	12/15/2021	57.22 to 85.84
Ethylene Oxide			EPA TO-15	0	ug/m3	ND 0.0418	KL	12/15/2021	

COMMENTS: \$ETO received in the lab at 29 in Hg.

ug/L: micrograms/liter
 mg/L: milligrams/liter
 mg/kg: milligrams/kilogram
 ug/kg: micrograms/kilogram
 ug/g: micrograms/gram
 ppm: parts per million
 ppb: parts per billion
 org/L: organisms/liter

<: less than
 MCL: Maximum Contaminant Level
 RL: Reporting Limit
 LSPC: result less than lower specification
 USPC: result greater than upper specification
 TIE: Tentatively Identified or Estimated
 VIOL: Violation (result exceeds MCL)

Laboratory Contacts:

Lab Director: Mark Tolbert 470-524-0577
 Inorganics: Carmen Pyles 470-524-0629
 Metals: Shene Jones 470-524-0544
 Organics: Mary Bowman 470-524-0639
 GC Mass Spec: Ralph Schulz 470-524-0684
 Microbiology: Mary Bowman 470-524-0709

**GEORGIA DEPARTMENT OF NATURAL RESOURCES
ENVIRONMENTAL PROTECTION DIVISION**

5804 Peachtree Corners East, Norcross, GA 30092-3403
(678) 248-7383

LABORATORY REPORT

TO: Ga EPD Air Program EPD Air Prot Ambient Monitoring 4244 International Pkwy Ste 120 Atlanta, GA 30354	Date Collected: 11/29/2021 Time Collected: 0:00 Sample Collector: J. BRYANT Chlorination: Sample Type: T Received By: HZ
	Date Received: 12/8/2021 Time Received: 11:35 AM Project: DATA STUDY Reporting Date: 1/18/2022 Received Temperature: 21.9 °C
Sample ID: AK89850 Facility Name: FULTON F2 FB Site ID: F2 Location ID: Location Descr:	

ANALYTE	PARAMETER CODE	EPA NOTE	METHOD	RESULT	UNITS	QUALIFIER RL	ANALYSIS		MCL or QC Range
							ANALYST	DATE	
ETO by EPA Method TO-15 QC Batch 194261									
Bromofluorobenzene(Surrogate QC Std.)			EPA TO-15	9.9369	ppbV		KL	12/15/2021	8 to 12
Ethylene Oxide			EPA TO-15	0	ppbV	ND 0.0232	KL	12/15/2021	
ETO Results by EPA Method TO-15									
Bromofluorobenzene(Surrogate QC Std.)			EPA TO-15	71.0788	ug/m3		KL	12/15/2021	57.22 to 85.84
Ethylene Oxide			EPA TO-15	0	ug/m3	ND 0.0418	KL	12/15/2021	

COMMENTS: \$ETO received in the lab at 29 in Hg.

ug/L: micrograms/liter
 mg/L: milligrams/liter
 mg/kg: milligrams/kilogram
 ug/kg: micrograms/kilogram
 ug/g: micrograms/gram
 ppm: parts per million
 ppb: parts per billion
 org/L: organisms/liter

<: less than
 MCL: Maximum Contaminant Level
 RL: Reporting Limit
 LSPC: result less than lower specification
 USPC: result greater than upper specification
 TIE: Tentatively Identified or Estimated
 VIOL: Violation (result exceeds MCL)

Laboratory Contacts:

Lab Director: Mark Tolbert 470-524-0577
 Inorganics: Carmen Pyles 470-524-0629
 Metals: Shene Jones 470-524-0544
 Organics: Mary Bowman 470-524-0639
 GC Mass Spec: Ralph Schulz 470-524-0684
 Microbiology: Mary Bowman 470-524-0709

**GEORGIA DEPARTMENT OF NATURAL RESOURCES
ENVIRONMENTAL PROTECTION DIVISION**

5804 Peachtree Corners East, Norcross, GA 30092-3403
(678) 248-7383

LABORATORY REPORT

TO: Ga EPD Air Program EPD Air Prot Ambient Monitoring 4244 International Pkwy Ste 120 Atlanta, GA 30354	Date Collected: 11/30/2021 Time Collected: 0:00 Sample Collector: J. BRYANT Chlorination: Sample Type: Received By: HZ
	Date Received: 12/8/2021 Time Received: 11:35 AM Project: DATA STUDY Reporting Date: 1/18/2022 Received Temperature: 23.5 °C
Sample ID: AK89851 Facility Name: COVINGTON C2 Site ID: C2 Location ID: Location Descr:	

ANALYTE	PARAMETER CODE	EPA NOTE	METHOD	RESULT	UNITS	QUALIFIER RL	ANALYSIS		MCL or QC Range
							ANALYST	DATE	
ETO by EPA Method TO-15 QC Batch 194261									
Bromofluorobenzene(Surrogate QC Std.)			EPA TO-15	10.9938	ppbV		KL	12/15/2021	8 to 12
Ethylene Oxide			EPA TO-15	0.2060	ppbV	0.0232	KL	12/15/2021	
ETO Results by EPA Method TO-15									
Bromofluorobenzene(Surrogate QC Std.)			EPA TO-15	78.6388	ug/m3		KL	12/15/2021	57.22 to 85.84
Ethylene Oxide			EPA TO-15	0.3713	ug/m3	0.0418	KL	12/15/2021	

COMMENTS: \$ETO received in the lab at 3.5 in Hg.

ug/L: micrograms/liter
 mg/L: milligrams/liter
 mg/kg: milligrams/kilogram
 ug/kg: micrograms/kilogram
 ug/g: micrograms/gram
 ppm: parts per million
 ppb: parts per billion
 org/L: organisms/liter

<: less than
 MCL: Maximum Contaminant Level
 RL: Reporting Limit
 LSPC: result less than lower specification
 USPC: result greater than upper specification
 TIE: Tentatively Identified or Estimated
 VIOL: Violation (result exceeds MCL)

Laboratory Contacts:

Lab Director: Mark Tolbert 470-524-0577
 Inorganics: Carmen Pyles 470-524-0629
 Metals: Shene Jones 470-524-0544
 Organics: Mary Bowman 470-524-0639
 GC Mass Spec: Ralph Schulz 470-524-0684
 Microbiology: Mary Bowman 470-524-0709

**GEORGIA DEPARTMENT OF NATURAL RESOURCES
ENVIRONMENTAL PROTECTION DIVISION**

5804 Peachtree Corners East, Norcross, GA 30092-3403
(678) 248-7383

LABORATORY REPORT

TO: Ga EPD Air Program EPD Air Prot Ambient Monitoring 4244 International Pkwy Ste 120 Atlanta, GA 30354	Date Collected: 11/29/2021 Time Collected: 0:00 Sample Collector: J. BRYANT Chlorination: Sample Type: Received By: HZ
	Date Received: 12/8/2021 Time Received: 11:34 AM Project: DATA STUDY Reporting Date: 1/18/2022 Received Temperature: 19.6 °C
Sample ID: AK89852 Facility Name: COVINGTON C2 FB Site ID: C2 Location ID: Location Descr:	

ANALYTE	PARAMETER CODE	EPA NOTE	METHOD	RESULT	UNITS	QUALIFIER RL	ANALYSIS		MCL or QC Range
							ANALYST	DATE	
ETO by EPA Method TO-15 QC Batch 194261									
Bromofluorobenzene(Surrogate QC Std.)			EPA TO-15	9.8793	ppbV		KL	12/15/2021	8 to 12
Ethylene Oxide			EPA TO-15	0	ppbV	ND	0.0232	KL	12/15/2021
ETO Results by EPA Method TO-15									
Bromofluorobenzene(Surrogate QC Std.)			EPA TO-15	70.6667	ug/m3		KL	12/15/2021	57.22 to 85.84
Ethylene Oxide			EPA TO-15	0	ug/m3	ND	0.0418	KL	12/15/2021

COMMENTS: \$ETO received in the lab at 29 in Hg.

ug/L: micrograms/liter
 mg/L: milligrams/liter
 mg/kg: milligrams/kilogram
 ug/kg: micrograms/kilogram
 ug/g: micrograms/gram
 ppm: parts per million
 ppb: parts per billion
 org/L: organisms/liter

<: less than
 MCL: Maximum Contaminant Level
 RL: Reporting Limit
 LSPC: result less than lower specification
 USPC: result greater than upper specification
 TIE: Tentatively Identified or Estimated
 VIOL: Violation (result exceeds MCL)

Laboratory Contacts:

Lab Director: Mark Tolbert 470-524-0577
 Inorganics: Carmen Pyles 470-524-0629
 Metals: Shene Jones 470-524-0544
 Organics: Mary Bowman 470-524-0639
 GC Mass Spec: Ralph Schulz 470-524-0684
 Microbiology: Mary Bowman 470-524-0709

**GEORGIA DEPARTMENT OF NATURAL RESOURCES
ENVIRONMENTAL PROTECTION DIVISION**

5804 Peachtree Corners East, Norcross, GA 30092-3403
(678) 248-7383

LABORATORY REPORT

TO: Ga EPD Air Program EPD Air Prot Ambient Monitoring 4244 International Pkwy Ste 120 Atlanta, GA 30354	Date Collected: 11/30/2021 Time Collected: 0:00 Sample Collector: J. BRYANT Chlorination: Sample Type: Received By: HZ
	Date Received: 12/8/2021 Time Received: 11:34 AM Project: DATA STUDY Reporting Date: 1/18/2022 Received Temperature: 24.6 °C
Sample ID: AK89853 Facility Name: COBB S2 Site ID: S2 Location ID: Location Descr:	

ANALYTE	PARAMETER CODE	EPA NOTE	METHOD	RESULT	UNITS	QUALIFIER RL	ANALYSIS		MCL or QC Range
							ANALYST	DATE	
ETO by EPA Method TO-15 QC Batch 194261									
Bromofluorobenzene(Surrogate QC Std.)			EPA TO-15	11.0489	ppbV		KL	12/15/2021	8 to 12
Ethylene Oxide			EPA TO-15	0.1511	ppbV	0.0232	KL	12/15/2021	
ETO Results by EPA Method TO-15									
Bromofluorobenzene(Surrogate QC Std.)			EPA TO-15	79.0329	ug/m3		KL	12/15/2021	57.22 to 85.84
Ethylene Oxide			EPA TO-15	0.2724	ug/m3	0.0418	KL	12/15/2021	

COMMENTS: \$ETO received in the lab at 3 in Hg.

ug/L: micrograms/liter
 mg/L: milligrams/liter
 mg/kg: milligrams/kilogram
 ug/kg: micrograms/kilogram
 ug/g: micrograms/gram
 ppm: parts per million
 ppb: parts per billion
 org/L: organisms/liter

<: less than
 MCL: Maximum Contaminant Level
 RL: Reporting Limit
 LSPC: result less than lower specification
 USPC: result greater than upper specification
 TIE: Tentatively Identified or Estimated
 VIOL: Violation (result exceeds MCL)

Laboratory Contacts:

Lab Director: Mark Tolbert 470-524-0577
 Inorganics: Carmen Pyles 470-524-0629
 Metals: Shene Jones 470-524-0544
 Organics: Mary Bowman 470-524-0639
 GC Mass Spec: Ralph Schulz 470-524-0684
 Microbiology: Mary Bowman 470-524-0709

**GEORGIA DEPARTMENT OF NATURAL RESOURCES
ENVIRONMENTAL PROTECTION DIVISION**

5804 Peachtree Corners East, Norcross, GA 30092-3403
(678) 248-7383

LABORATORY REPORT

TO: Ga EPD Air Program EPD Air Prot Ambient Monitoring 4244 International Pkwy Ste 120 Atlanta, GA 30354	Date Collected: 11/30/2021 Time Collected: 0:00 Sample Collector: J. BRYANT Chlorination: Sample Type: Received By: HZ
	Date Received: 12/8/2021 Time Received: 11:35 AM Project: DATA STUDY Reporting Date: 1/18/2022 Received Temperature: 21.9 °C
Sample ID: AK89854 Facility Name: FULTON F2 Site ID: F2 Location ID: Location Descr:	

ANALYTE	PARAMETER CODE	EPA NOTE	METHOD	RESULT	UNITS	QUALIFIER RL	ANALYSIS		MCL or QC Range
							ANALYST	DATE	
ETO by EPA Method TO-15 QC Batch 194261									
Bromofluorobenzene(Surrogate QC Std.)			EPA TO-15	9.6594	ppbV		KL	12/15/2021	8 to 12
Ethylene Oxide			EPA TO-15	0.1759	ppbV	0.0232	KL	12/15/2021	
ETO Results by EPA Method TO-15									
Bromofluorobenzene(Surrogate QC Std.)			EPA TO-15	69.0938	ug/m3		KL	12/15/2021	57.22 to 85.84
Ethylene Oxide			EPA TO-15	0.3171	ug/m3	0.0418	KL	12/15/2021	

COMMENTS: \$ETO received in the lab at 8.5 in Hg.

ug/L: micrograms/liter
 mg/L: milligrams/liter
 mg/kg: milligrams/kilogram
 ug/kg: micrograms/kilogram
 ug/g: micrograms/gram
 ppm: parts per million
 ppb: parts per billion
 org/L: organisms/liter

<: less than
 MCL: Maximum Contaminant Level
 RL: Reporting Limit
 LSPC: result less than lower specification
 USPC: result greater than upper specification
 TIE: Tentatively Identified or Estimated
 VIOL: Violation (result exceeds MCL)

Laboratory Contacts:

Lab Director: Mark Tolbert 470-524-0577
 Inorganics: Carmen Pyles 470-524-0629
 Metals: Shene Jones 470-524-0544
 Organics: Mary Bowman 470-524-0639
 GC Mass Spec: Ralph Schulz 470-524-0684
 Microbiology: Mary Bowman 470-524-0709

**GEORGIA DEPARTMENT OF NATURAL RESOURCES
ENVIRONMENTAL PROTECTION DIVISION**

5804 Peachtree Corners East, Norcross, GA 30092-3403
(678) 248-7383

LABORATORY REPORT

TO: Ga EPD Air Program EPD Air Prot Ambient Monitoring 4244 International Pkwy Ste 120 Atlanta, GA 30354	Date Collected: 11/30/2021 Time Collected: 0:00 Sample Collector: H. STREET Canister Number: 114344 Canister Cleaned: 11/1/2021 Received By: HZ
	Date Received: 12/2/2021 Time Received: 10:41 AM Project: AIR Reporting Date: 1/18/2022 Received Temperature: 20.9 °C
Sample ID: AK89856 Facility Name: SOUTH DEKALB Site ID: 013-089-0002 Location ID: Location Descr:	

ANALYTE	PARAMETER CODE	EPA NOTE	METHOD	RESULT	UNITS	QUALIFIER RL	ANALYSIS		MCL or QC Range
							ANALYST	DATE	
ETO by EPA Method TO-15 QC Batch 194261									
Bromofluorobenzene(Surrogate QC Std.)			EPA TO-15	9.7276	ppbV		KL	12/15/2021	8 to 12
Ethylene Oxide			EPA TO-15	0.1281	ppbV	0.0232	KL	12/15/2021	
ETO Results by EPA Method TO-15									
Bromofluorobenzene(Surrogate QC Std.)			EPA TO-15	69.5816	ug/m3		KL	12/15/2021	57.22 to 85.84
Ethylene Oxide			EPA TO-15	0.2309	ug/m3	0.0418	KL	12/15/2021	

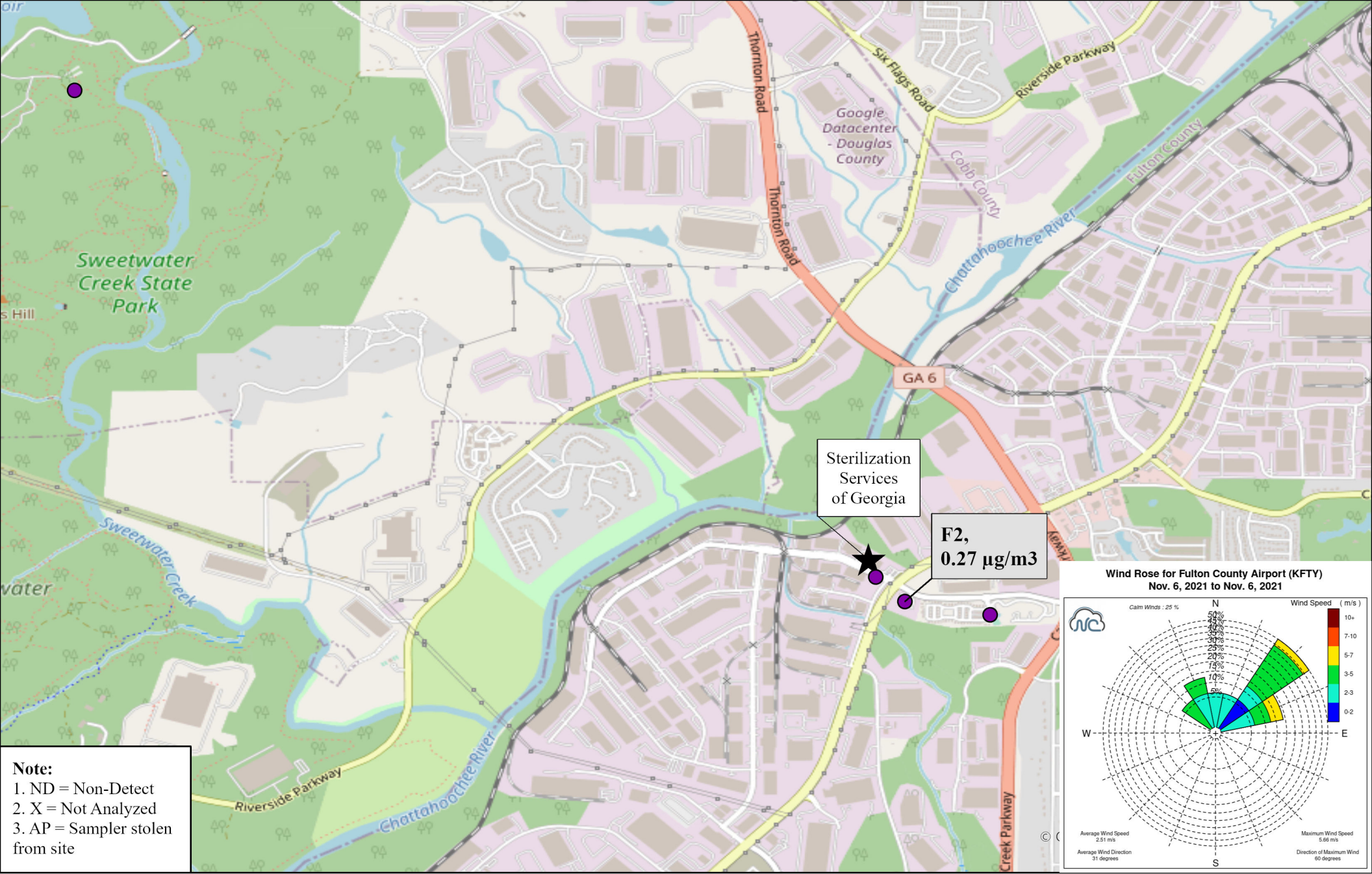
COMMENTS: \$ETO received in the lab at 5.4 psi.

ug/L: micrograms/liter
 mg/L: milligrams/liter
 mg/kg: milligrams/kilogram
 ug/kg: micrograms/kilogram
 ug/g: micrograms/gram
 ppm: parts per million
 ppb: parts per billion
 org/L: organisms/liter

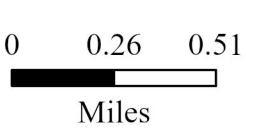
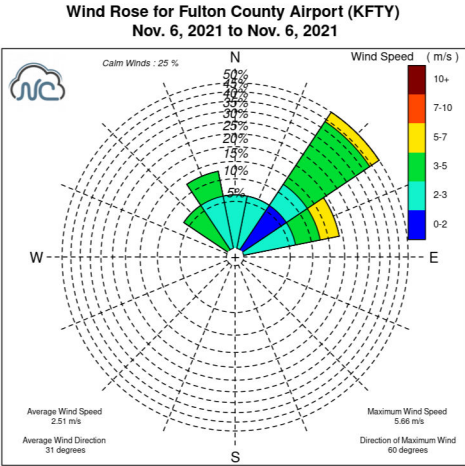
<: less than
 MCL: Maximum Contaminant Level
 RL: Reporting Limit
 LSPC: result less than lower specification
 USPC: result greater than upper specification
 TIE: Tentatively Identified or Estimated
 VIOL: Violation (result exceeds MCL)

Laboratory Contacts:

Lab Director: Mark Tolbert 470-524-0577
 Inorganics: Carmen Pyles 470-524-0629
 Metals: Shene Jones 470-524-0544
 Organics: Mary Bowman 470-524-0639
 GC Mass Spec: Ralph Schulz 470-524-0684
 Microbiology: Mary Bowman 470-524-0709



Note:
 1. ND = Non-Detect
 2. X = Not Analyzed
 3. AP = Sampler stolen from site

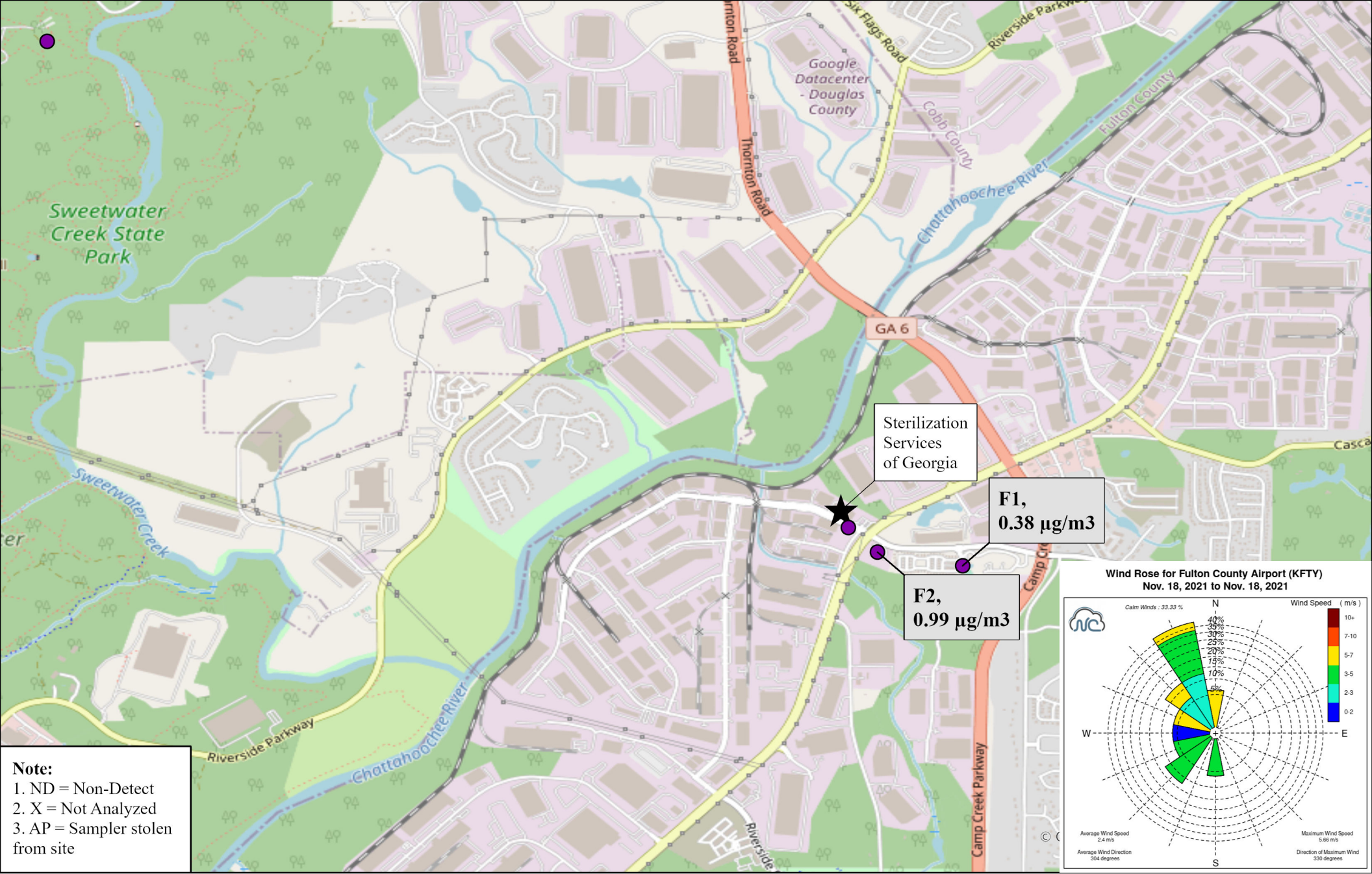


Site ID, Concentration (µg/m3)

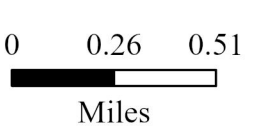
Ethylene Oxide Sampling
 Fulton County, GA

11/06/2021
 Sampled By: Georgia Environmental Protection Division
 Analyzed By: Georgia Environmental Protection Division





Note:
 1. ND = Non-Detect
 2. X = Not Analyzed
 3. AP = Sampler stolen from site

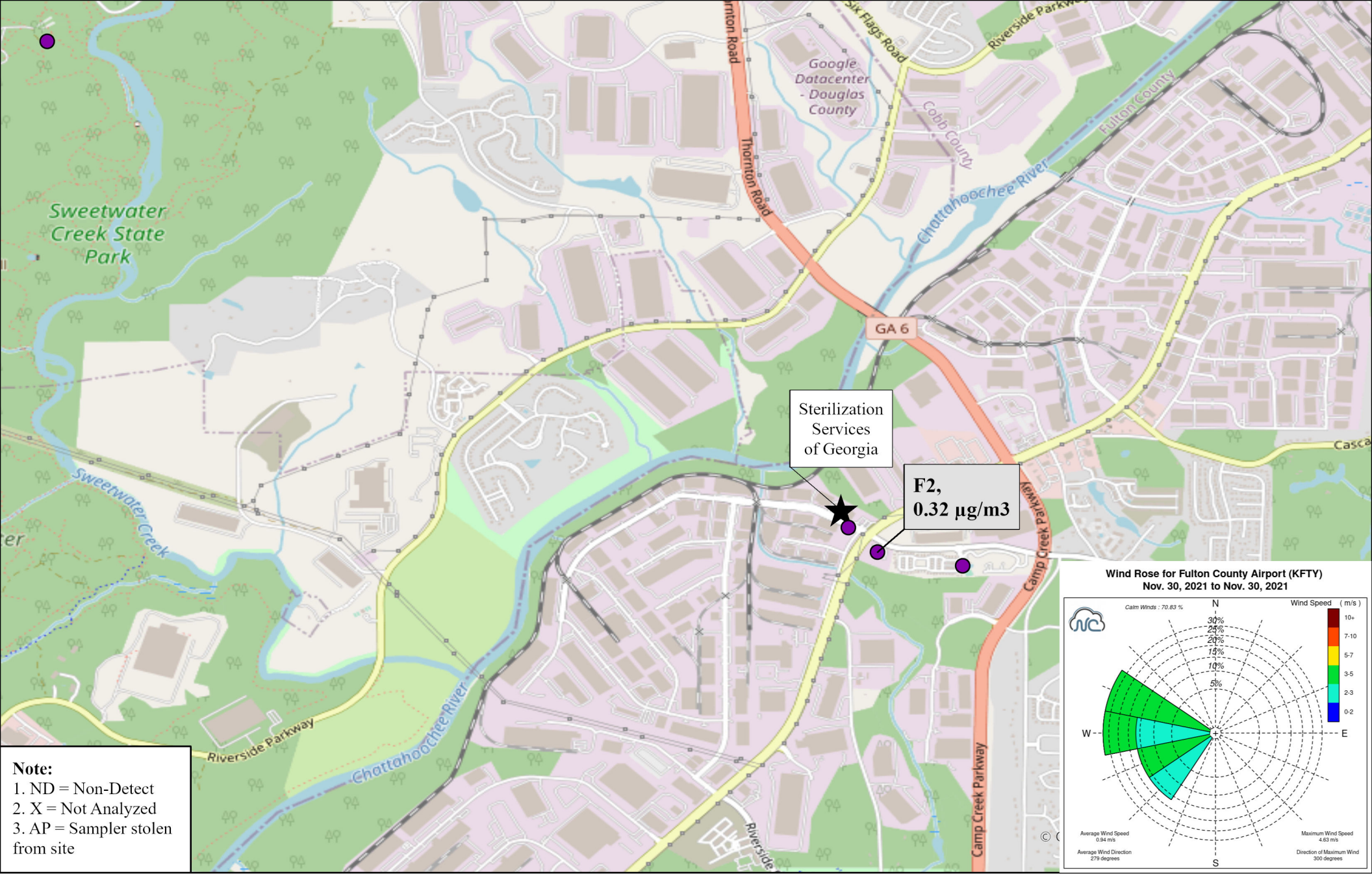


Site ID, Concentration (µg/m³)

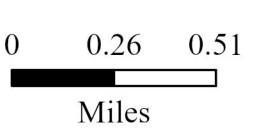
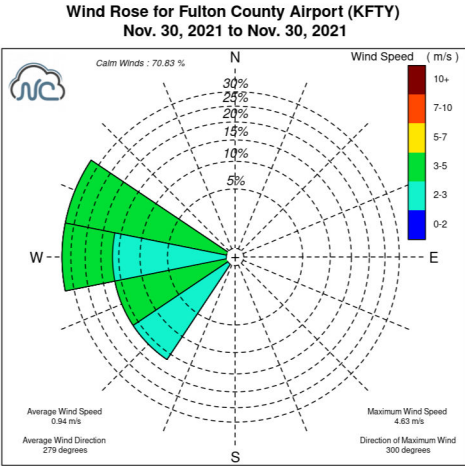
Ethylene Oxide Sampling
 Fulton County, GA

11/18/2021
 Sampled By: Georgia Environmental Protection Division
 Analyzed By: Georgia Environmental Protection Division





Note:
 1. ND = Non-Detect
 2. X = Not Analyzed
 3. AP = Sampler stolen from site

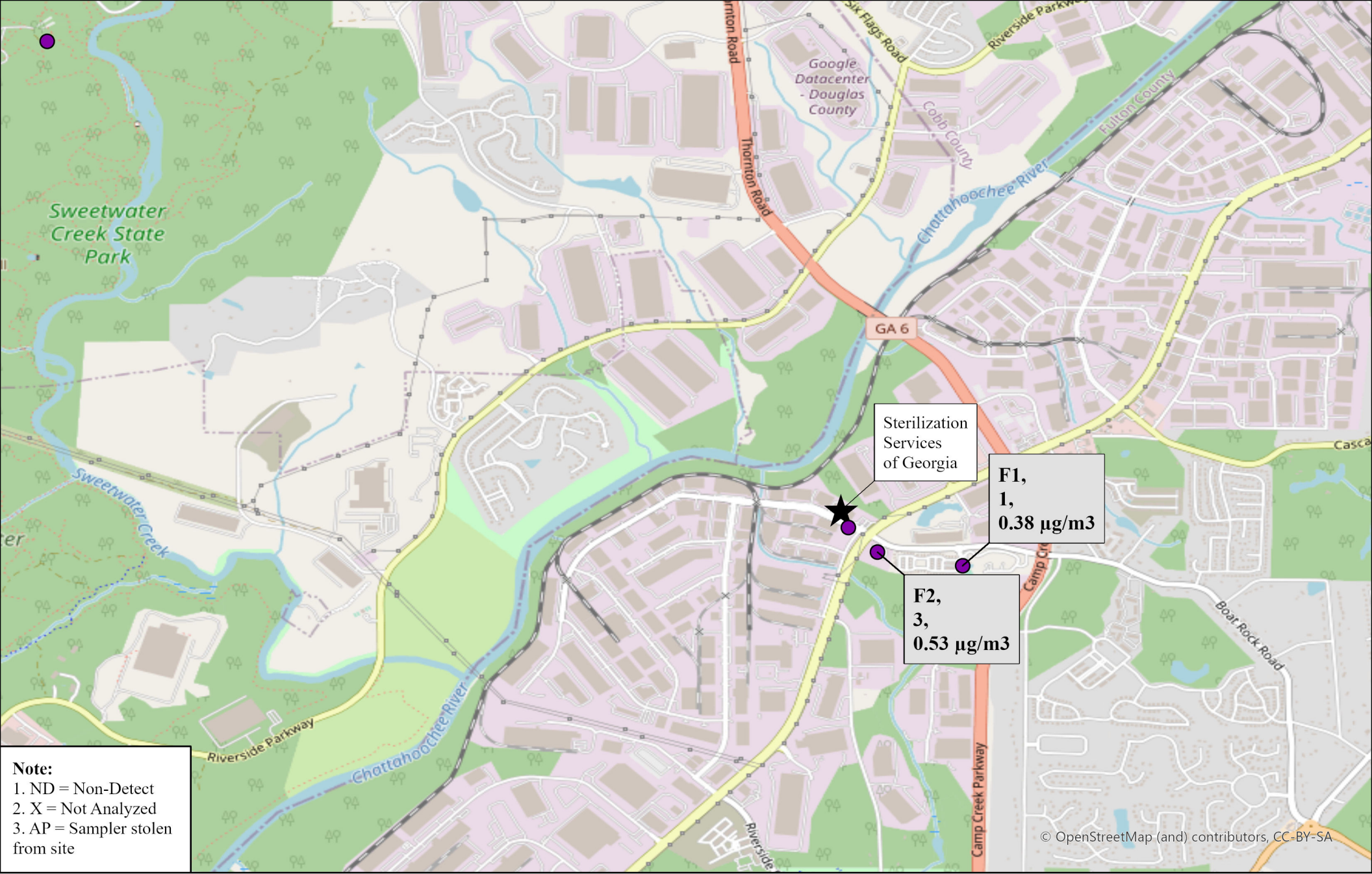


Site ID, Concentration ($\mu\text{g}/\text{m}^3$)

Ethylene Oxide Sampling
 Fulton County, GA

11/30/2021
 Sampled By: Georgia Environmental Protection Division
 Analyzed By: Georgia Environmental Protection Division





Ethylene Oxide Sampling
 Fulton County, GA

November 2021 Site Average Values
 Note: Not detectable values were included in average calculations as a value of 0.
 Sampled By: Georgia Environmental Protection Division
 Analyzed By: Georgia Environmental Protection Division

