

CLOSURE DRAWINGS

PLANT HAMMOND - GEORGIA POWER

ASH POND 4 (AP-4)

DEWATERED CCR SURFACE IMPOUNDMENT

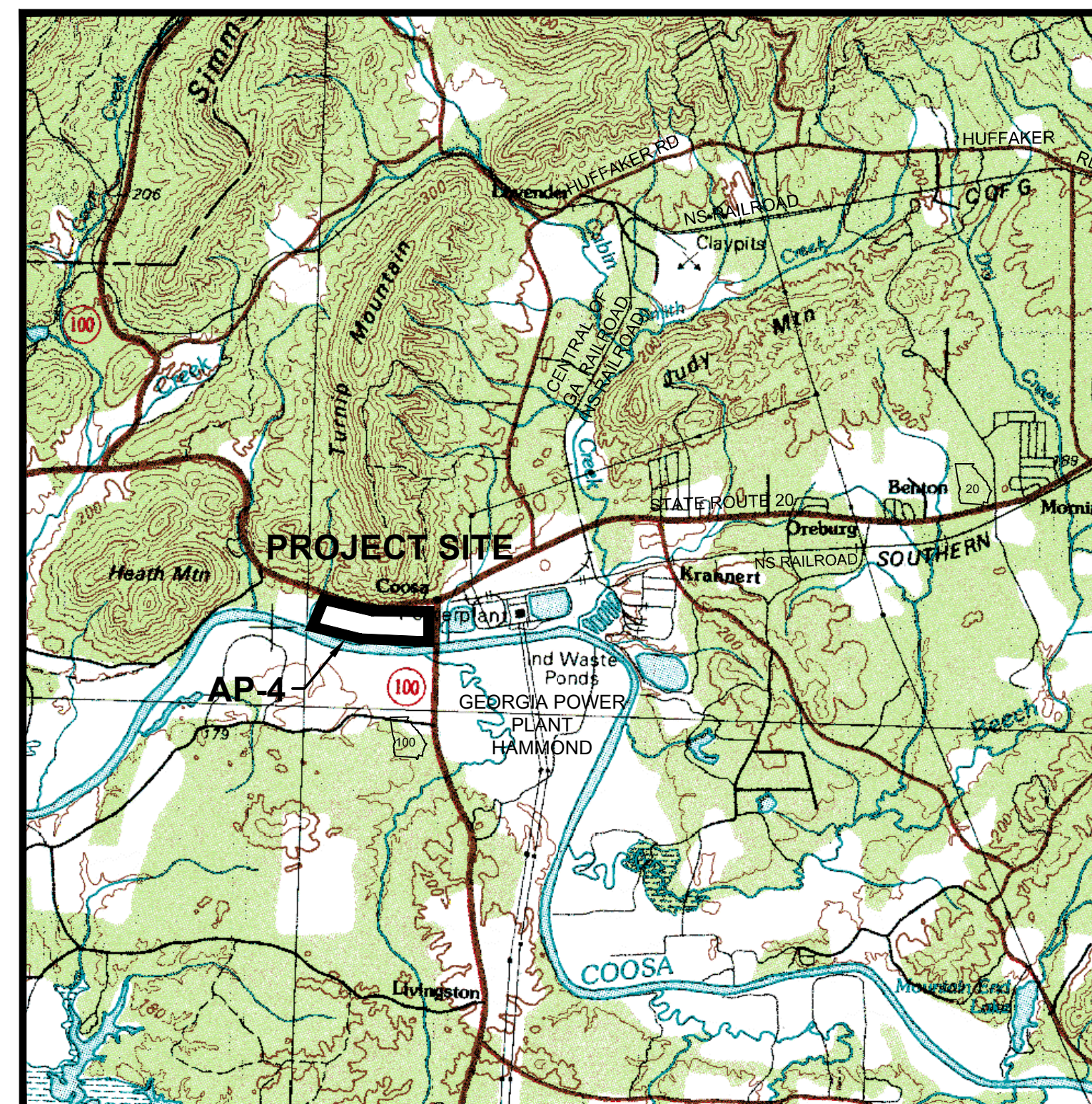
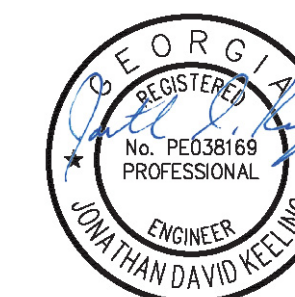
FLOYD COUNTY, GEORGIA

PREPARED FOR
GEORGIA POWER

PREPARED BY



LOCATION MAP
NOT TO SCALE



SITE LOCATION MAP
SCALE: 1"=5000'

INDEX OF SHEETS

- 1 COVER SHEET
- 2 GENERAL NOTES
- 3 EXISTING CONDITIONS
- 3A INTERIM CAP IMPROVEMENT PLAN**
- 4 EXCAVATION PLAN
- 5 FINAL GRADE PLAN
- 6 EROSION CONTROL PLAN
- 7 BASELINE PROFILE
- 8-9 CROSS SECTIONS
- 10-11 DETAILS
- 12 COMPLIANCE MONITORING NETWORK
- P467(4) PLANT HAMMOND ASH POND 4 PERMITTED SITE BOUNDARY
- 1 OF 1 ENVIRONMENTAL MONITORING PLAN

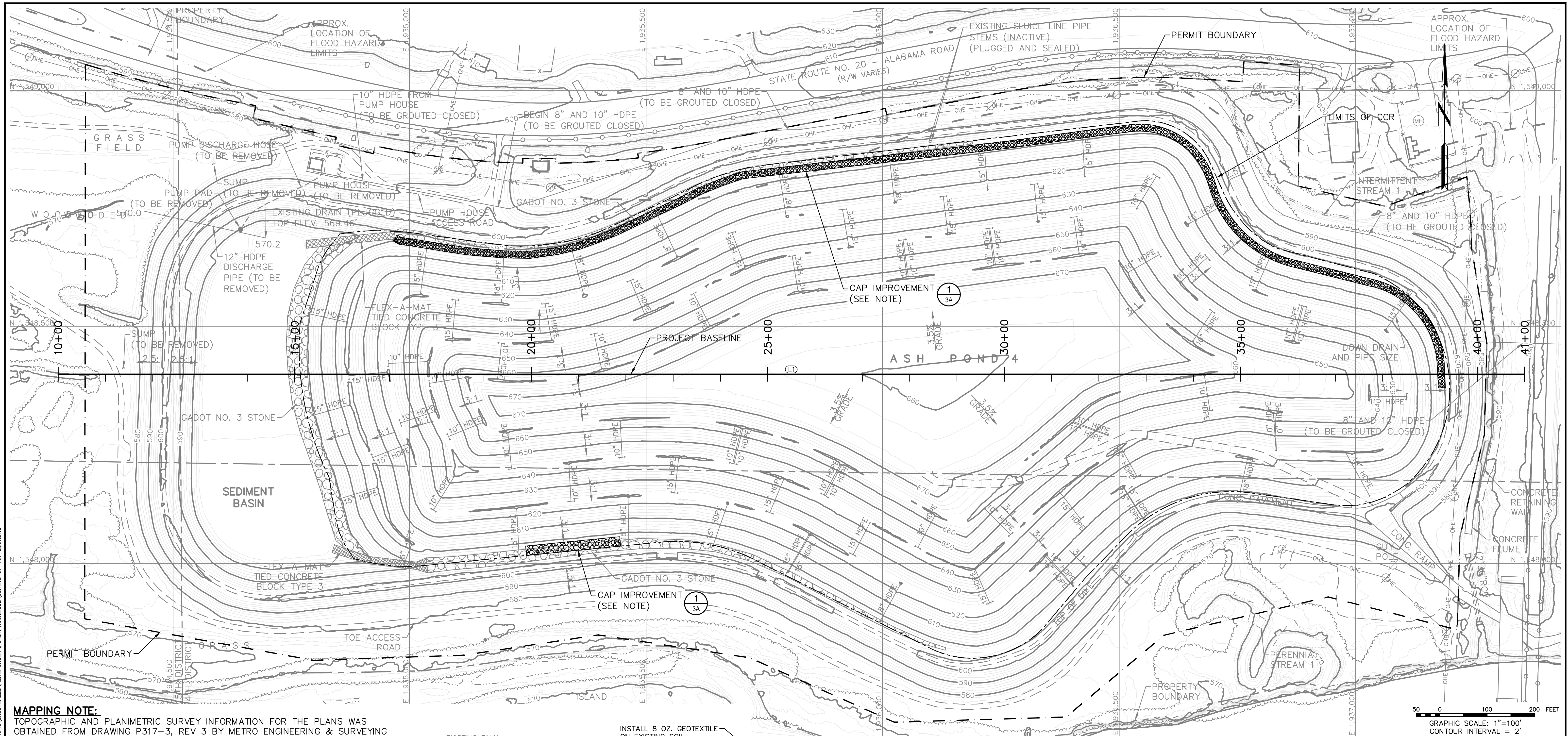
RESPONSIBLE OFFICIAL

GENERAL MANAGER
GEORGIA POWER ENVIRONMENTAL AFFAIRS
241 RALPH MCGILL BLVD NE
ATLANTA, GEORGIA 30308
404-506-6505

PROPERTY OWNER
GEORGIA POWER COMPANY
241 RALPH MCGILL BLVD.
ATLANTA, GEORGIA 30308

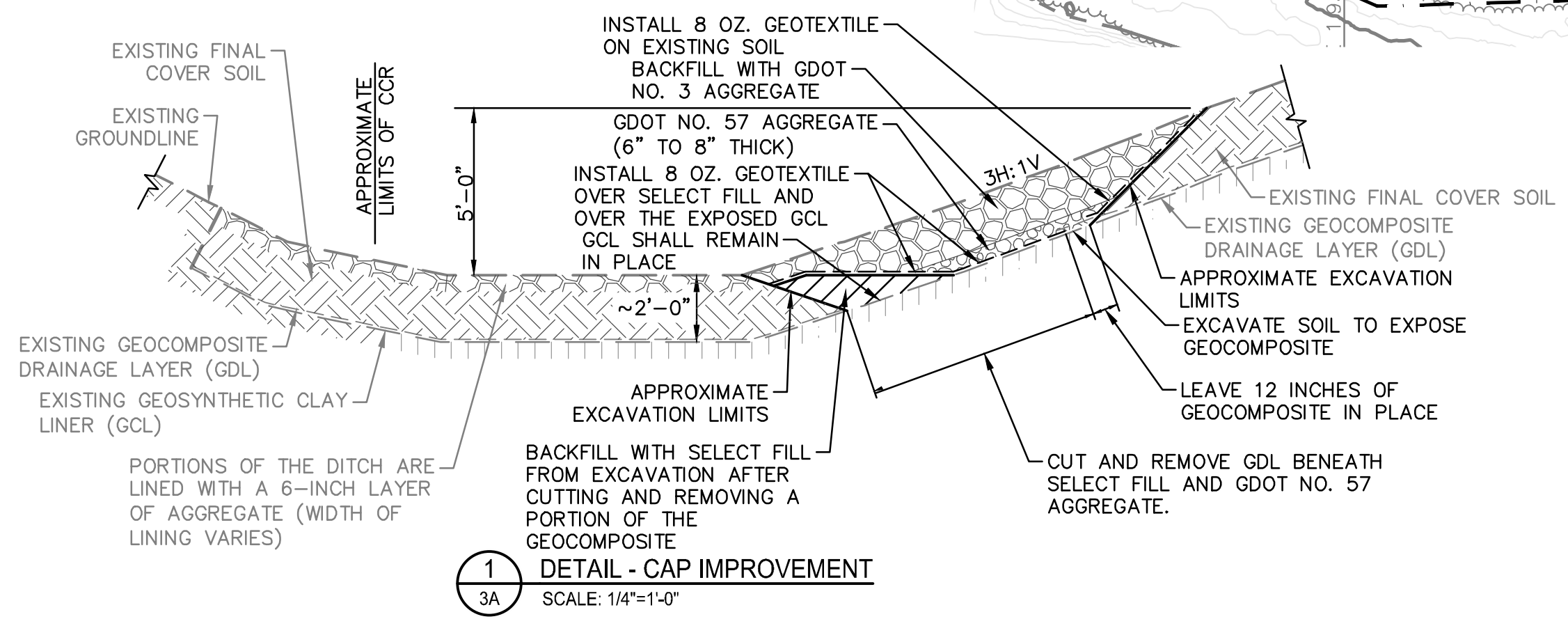
REV	DATE	DESCRIPTION	DRWN	CHKD
1	03/2023	ADDED SHEET	JM	JK
0	05/2020	INITIAL SUBMITTAL TO EPD	TJ	JK
COVER SHEET				
CLOSURE DRAWINGS FOR PLANT HAMMOND - GEORGIA POWER ASH POND 4 (AP-4) - DEWATERED CCR SURFACE IMPOUNDMENT FLOYD COUNTY, GEORGIA				
1110 Market Street, Suite 214A Chattanooga, Tennessee 37402-2863 www.stantec.com				
PROJ. NO.	175618707	DWG.	01_18707-001-CVR_R1	EDIT
SCALE	AS SHOWN			
DATE	APRIL 2020	SHEET 1 OF 12		

PLOT DATE: 03/29/2023 USER: MCKINNEY, JIMMY TECHNICAL PRODUCTION DRAWINGS SHEET FILES: V:\PROJECTS\175618707\TECHNICAL PRODUCTION DRAWINGS\SHEET_FILES\ASH_POND_4\PERMIT\002\SUB\01_18707-001-CVR_R1.DWG



MAPPING NOTE:
 TOPOGRAPHIC AND PLANIMETRIC SURVEY INFORMATION FOR THE PLANS WAS OBTAINED FROM DRAWING P317-3, REV 3 BY METRO ENGINEERING & SURVEYING CO., INC. DATED FEBRUARY 26, 2013. ALL COORDINATES ARE BASED ON NORTH AMERICAN DATUM 83 (NAD 83), GEORGIA STATE PLANE, WEST ZONE. ALL ELEVATIONS ARE BASED ON THE NORTH AMERICAN VERTICAL DATUM 88 (NAVD 88).

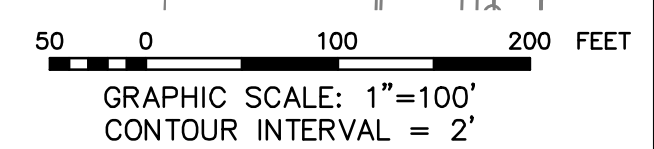
NOTE:
 THE INTERIM CAP IMPROVEMENTS SHOWN ARE BEING IMPLEMENTED IN THE FIELD AS NECESSARY TO IMPROVE CAP RESILIENCE PRIOR TO CLOSURE. THIS CAP IMPROVEMENT MAY BE IMPLEMENTED IN OTHER AREAS AS NEEDED BASED ON SITE CONDITIONS.



1
3A
DETAIL - CAP IMPROVEMENT
 SCALE: 1/4"=1'-0"

LEGEND

---	EXISTING INDEX CONTOUR
---	EXISTING INTERMEDIATE CONTOUR
---	EDGE OF WATER
---	FLOOD HAZARD LIMITS
---	APPROXIMATE LAND LOT LINE
---	GRAVEL ROAD
---	TREE LINE
X	FENCE
OHE	OVERHEAD ELECTRIC POWER POLE
---	PERMIT BOUNDARY
---	PROPERTY BOUNDARY
---	GUARDRAIL
---	LIMITS OF CCR



0	03/2023	SUBMITTAL TO EPD	JM	MV	
REV	DATE	DESCRIPTION	DRWN	CHKD	
INTERIM CAP IMPROVEMENT PLAN					
CLOSURE DRAWINGS					
FOR PLANT HAMMOND - GEORGIA POWER ASH POND 4 (AP-4) - DEWATERED CCR SURFACE IMPOUNDMENT FLOYD COUNTY, GEORGIA					
1110 Market Street, Suite 214A Chattanooga, Tennessee 37402-2863 www.stantec.com					
PROJ. NO.	175618707	DWG.	03A_18707-101-EC01	EDIT	03/2023
SCALE	1"=100'	SHEET 3A OF 12			
DATE	FEBRUARY 2023				

PLOT DATE: 03/29/2023 USER: MCKINNEY, JIMMY
 FILE: V:\2023\175618707\PROJECTS\175618707\TECHNICAL PRODUCTION DRAWINGS\SHEET_FILES\ASH_POND_4\PERMIT\101-EC01.DWG