

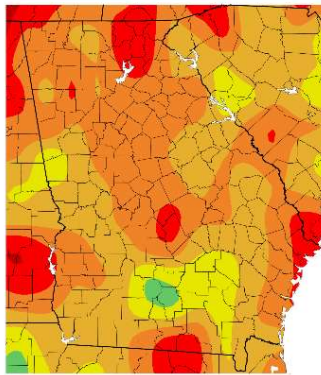
January 2021 Climate Summary – Georgia

Nyasha Dunkley and Henian Zhang

State of Georgia Climate Office

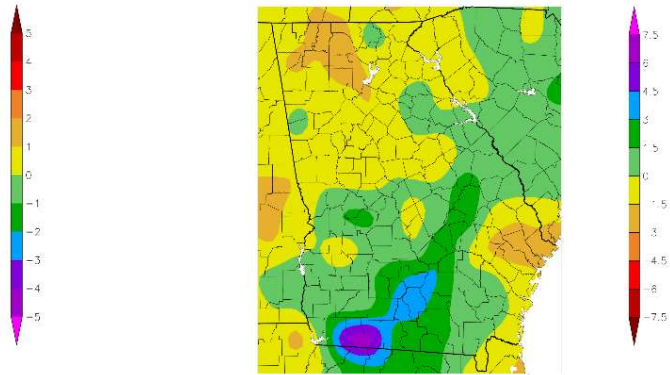
Statewide average temperatures continued to trend above normal for January, with an average temperature of 48.0°F (+1.9° above average). Savannah set two record high minimum temperature records on the 2nd and 26th of the month at 67° and 64°, respectively. Major climate sites, including Atlanta and Athens, had temperature departures 2.9° above normal, while Rome reached temperatures 3.4° above normal. A small area of southern Georgia saw average temperatures fall slightly below normal by less than a degree. Average rainfall was near normal statewide, in contrast to a 5-month average of 2.43” above normal from September 2020 to January 2021.

Departure from Normal Temperature (F)
1/1/2021 – 1/31/2021



Generated 2/1/2021 at IPRCC using provisional data.

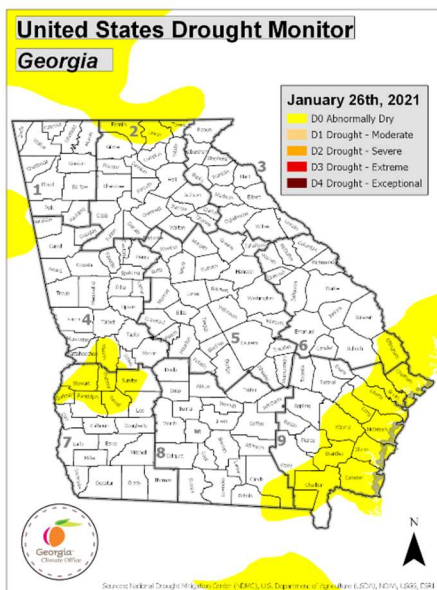
Departure from Normal Precipitation (in)
1/1/2021 – 1/31/2021



NOAA Regional Climate Centers

Generated 2/1/2021 at IPRCC using provisional data.

NOAA Regional Climate Centers

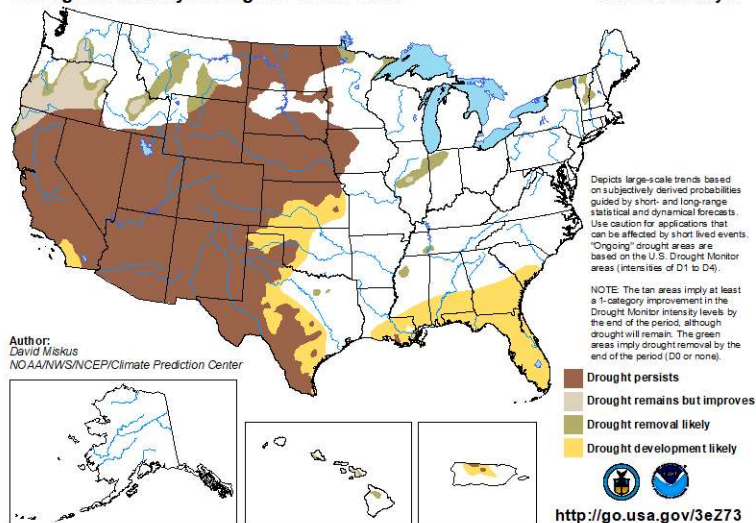


Abnormally dry (D0) conditions remained consistent across a few counties in west Georgia and along the coast through January, according to the U.S. Drought Monitor. Rain and snow from several weather systems was sufficient to avoid any further degradation across the state.

The seasonal outlook from the Climate Prediction Center showed drought development likely over Central and South Georgia, consistent with La Niña conditions keeping the likelihood of below normal precipitation across the region.

U.S. Seasonal Drought Outlook
Drought Tendency During the Valid Period

Valid for January 21 - April 30, 2021
Released January 21



La Niña conditions continued in January with below-average sea surface temperatures extending from the western to the eastern Pacific Ocean. La Niña conditions are likely to continue through the Northern Hemisphere winter (~95% chance during January-March), with a potential transition to ENSO-neutral during Spring 2021 (~55% chance during April-June). The seasonal outlook from the Climate Prediction Center for February, March, and April favors below normal precipitation and above normal temperatures for the state.

