

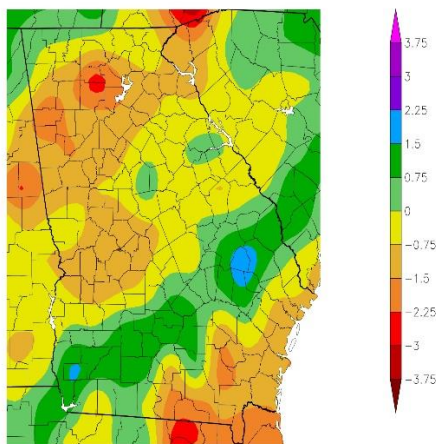
January 2022 Climate Summary – Georgia

Nyasha Dunkley and Henian Zhang

State of Georgia Climate Office

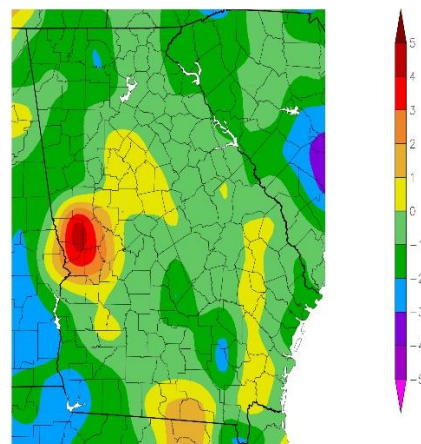
The month of January began the year on a slightly drier and cooler than average note, with a touch of wintry precipitation during the middle of the month. Although the average temperature for the state was slightly below average at 45.8° (-0.3), some areas of west Georgia were well above normal for the month by 3-5 degrees. The majority of the state also experienced drier than average conditions with limited rainfall.

Departure from Normal Precipitation (in)
1/1/2022 – 1/31/2022



Generated 2/10/2022 at HPRCC using provisional data.

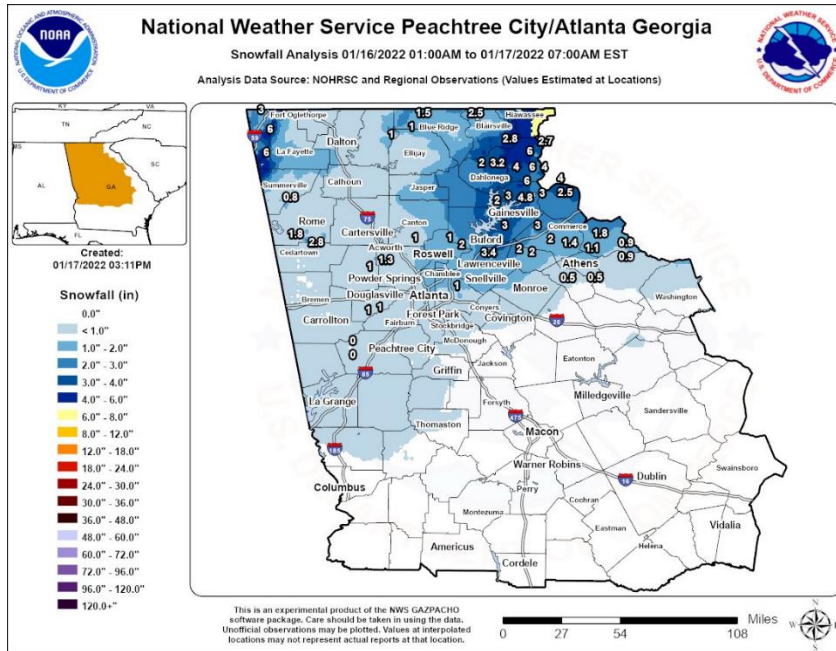
Departure from Normal Temperature (F)
1/1/2022 – 1/31/2022



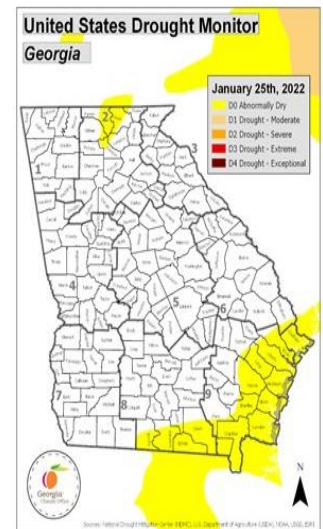
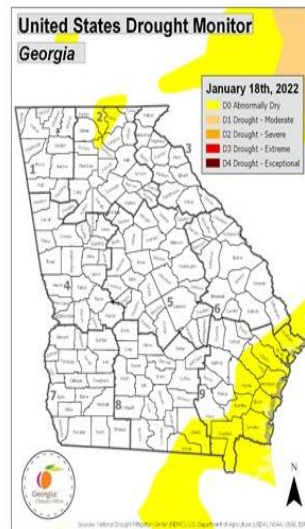
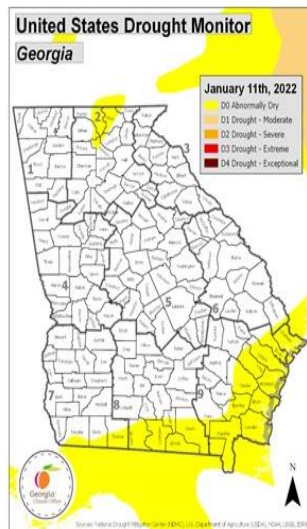
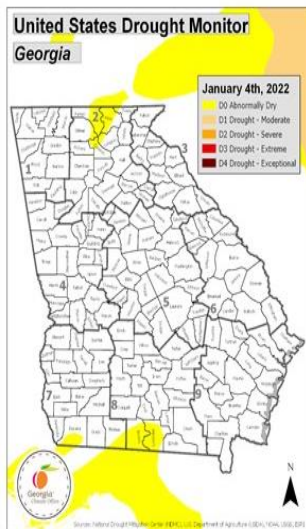
NOAA Regional Climate Centers Generated 2/10/2022 at HPRCC using provisional data.

NOAA Regional Climate Centers

A winter storm during the middle of the month brought snowfall to areas of north Georgia, including Atlanta, which had not seen snow since 2018. An area of low pressure tracked through the region on January 15th and 16th encountering a wedge of cold air which allowed for a wintry mix of ice, rain, and snow for areas across Georgia. Colder temperatures in Northeast Georgia caused snowfall amounts to be highest in that region. According to the National Weather Service at Peachtree City, this system ended the second longest snow drought of Atlanta, with 0.3" of snow officially recorded. Wind gusts accompanying the passing of the system also caused numerous downed trees and widespread power outages across the state.



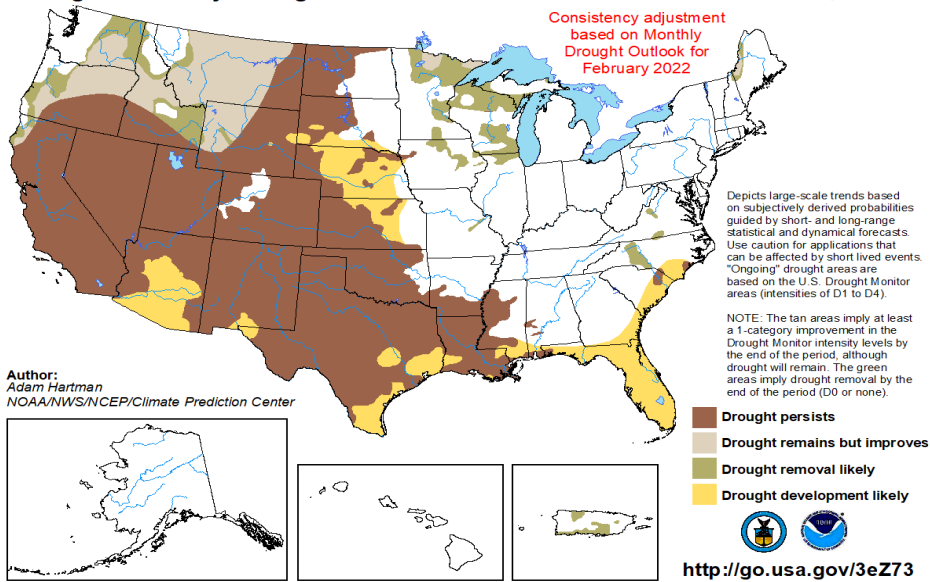
Abnormally dry conditions developed in Southeast Georgia and a small area in the north during the month of January due to lack of precipitation, according to the U.S. Drought Monitor. The seasonal outlook from the Climate Prediction Center suggests low tendency for drought development over Georgia for the February through April period, except for Southeast Georgia.



U.S. Seasonal Drought Outlook
Drought Tendency During the Valid Period

Valid for February 1 - April 30, 2022
Released January 31, 2022

Consistency adjustment
based on Monthly
Drought Outlook for
February 2022



According to the Climate Prediction Center, La Niña is present and likely to continue into the spring (~67% chance during March-May) and then transition to ENSO-neutral (51% chance during April-June). The seasonal outlook from the Climate Prediction Center for February, March, and April favors above normal temperatures and below normal rainfall for Georgia.

