

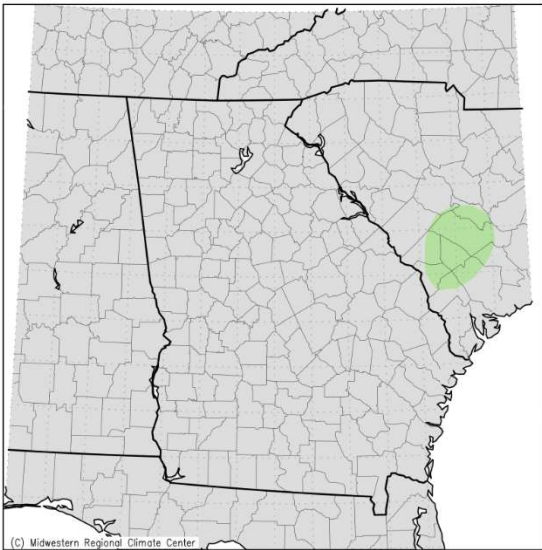
June 2021 Climate Summary – Georgia

Nyasha Dunkley and Henian Zhang

State of Georgia Climate Office

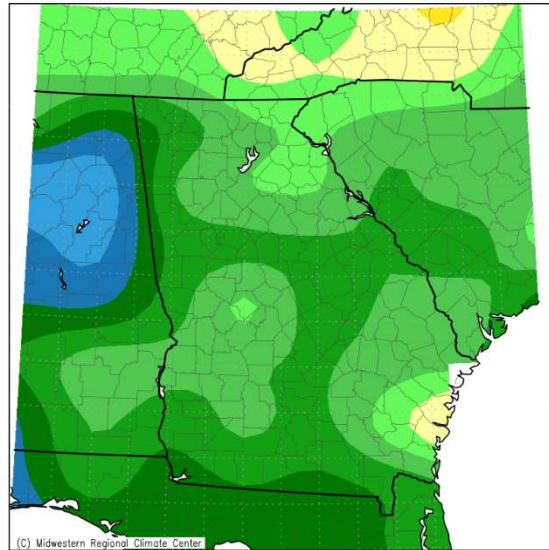
The month of June ended with normal temperatures and above normal precipitation. The statewide average temperature was 77.3°F, which was 0.1°F cooler than normal. Average precipitation for the state was 5.93", which was 1.44" above normal. This is partly due to the two tropical storms entering the state. Tropical Storm Claudette made landfall in Louisiana on June 19th. Even though it was weakened to a tropical depression while moving across Georgia, it still brought heavy rain across the state and spawned tornadoes in Early, Clay, and Randolph county. A daily record of 2.33" of rain was set in Atlanta on June 19th. Tropical Storm Danny also weakened into a tropical depression shortly after its landfall in South Carolina on June 28th and brought rain to parts of Georgia.

Average Temperature (°F): Departure from Mean
June 1, 2021 to June 30, 2021

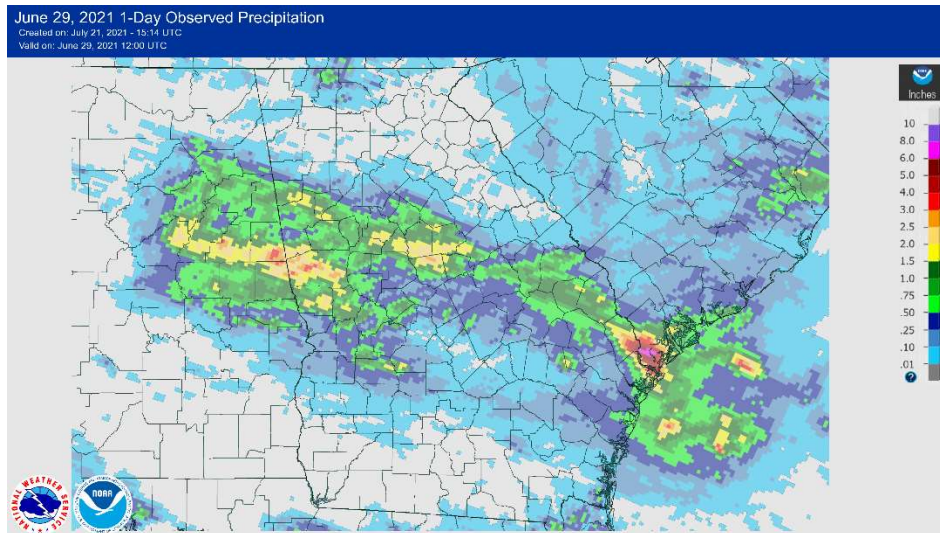
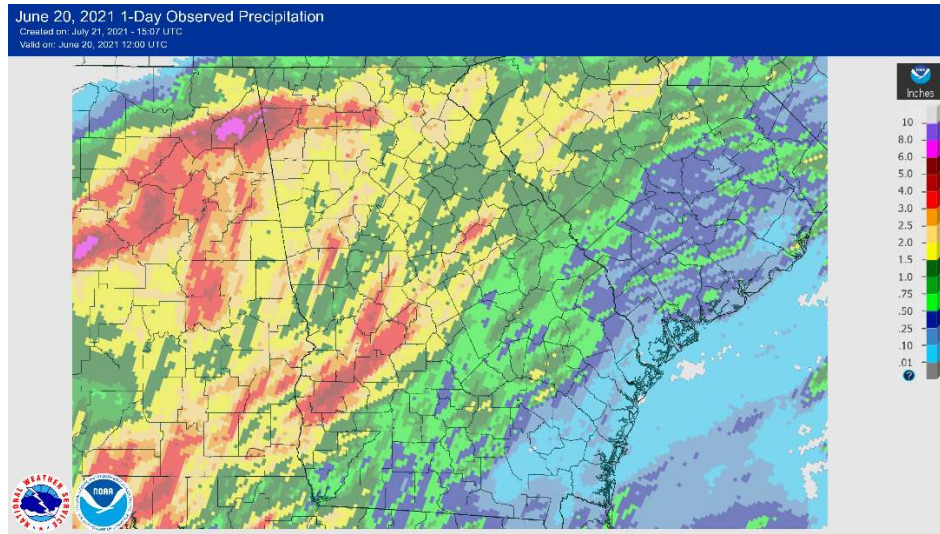


Midwestern Regional Climate Center
cli-MATE: MRCC Application Tools Environment

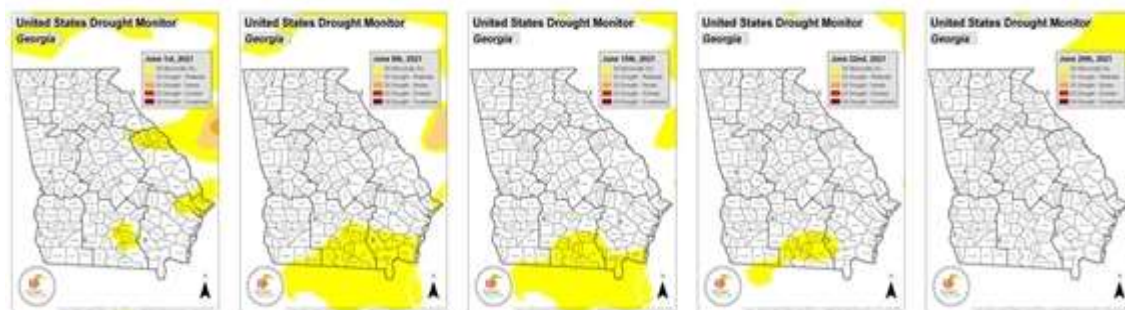
Accumulated Precipitation (in): Departure from Mean
June 1, 2021 to June 30, 2021



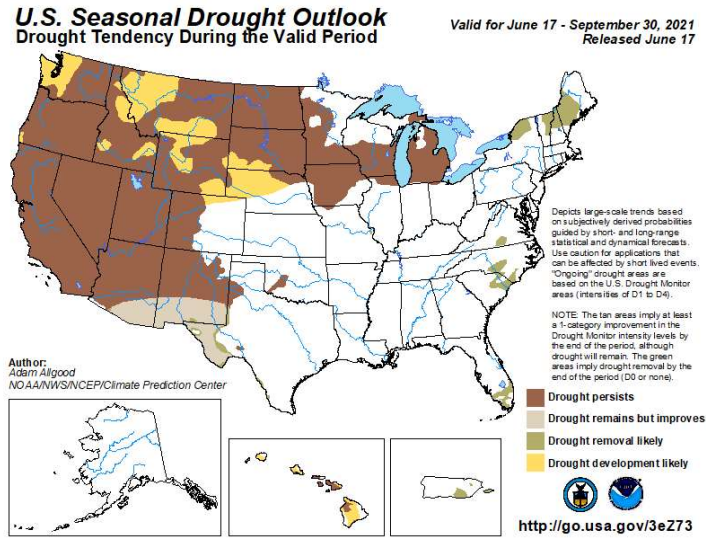
Midwestern Regional Climate Center
cli-MATE: MRCC Application Tools Environment



According to the U.S. Drought Monitor, abnormally dry (D0) conditions continued to show improvement during the month of June. Several border counties to Florida experienced abnormal dryness mid-month, with drought-free conditions prevailing across the entire state by the end of the month.



The seasonal outlook from the Climate Prediction Center suggests low tendency for drought development over Georgia for the June through September period.



ENSO-neutral conditions continued during June, according to the Climate Prediction Center, with near-average sea surface temperatures over most of the equatorial Pacific Ocean. ENSO-neutral conditions are favored to continue through the Northern Hemisphere summer and into Fall, with the chance of La Nina conditions developing during the September-November season. The seasonal outlook from the Climate Prediction Center for July, August, and September favors above normal temperatures and above normal seasonal total precipitation amounts for Georgia.

