

## **EXHIBIT 8.      PERMIT DRAWINGS**

---



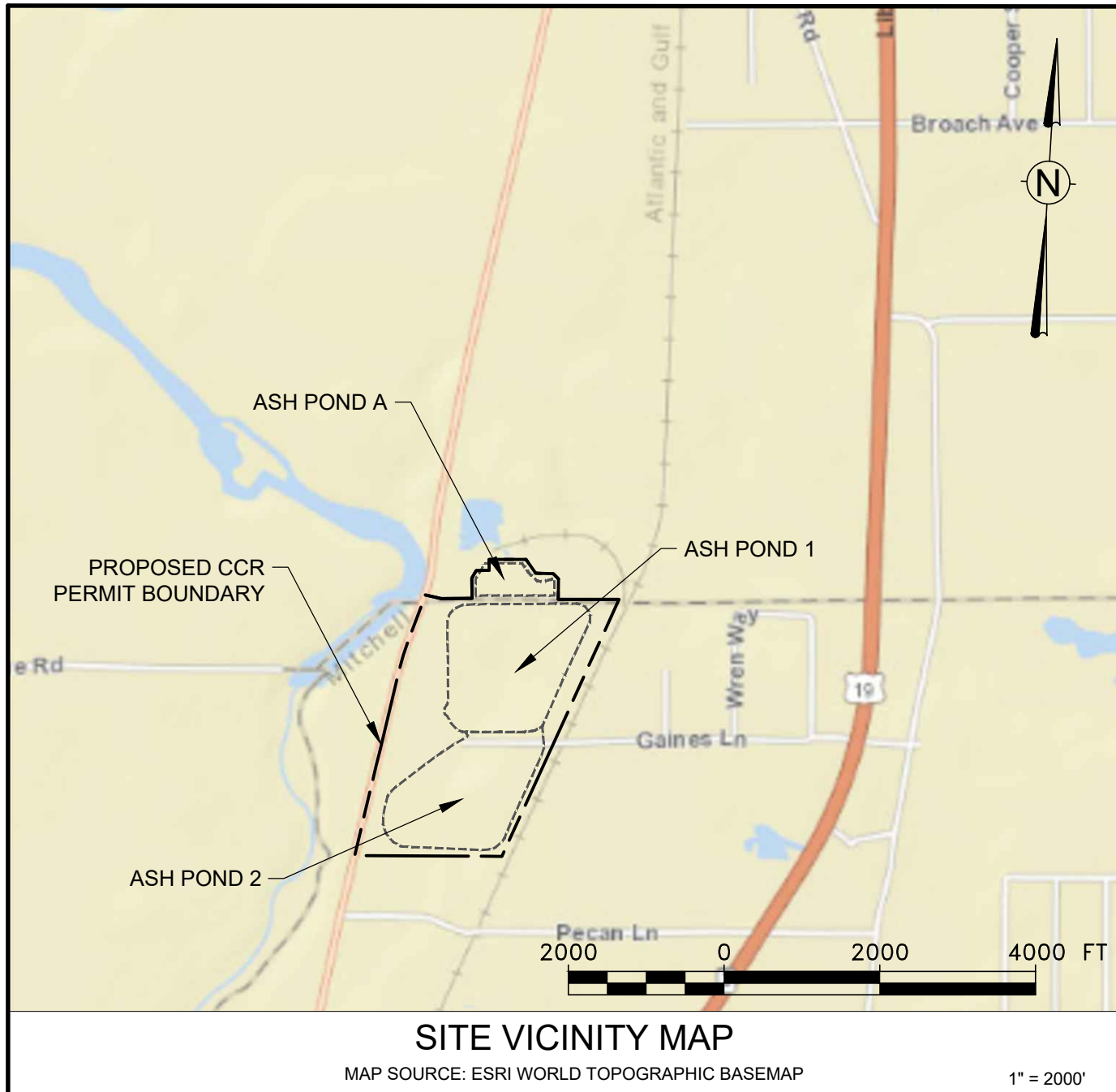
# PLANT MITCHELL CCR SURFACE IMPOUNDMENT CLOSURES

## ASH PONDS A, 1, AND 2 CLOSURE-BY-REMOVAL

### MITCHELL AND DOUGHERTY COUNTIES, GEORGIA

#### APRIL 2022

#### PERMIT DRAWINGS - NOT FOR CONSTRUCTION



LIST OF DRAWINGS	
Sheet Number	Sheet Title
1	COVER SHEET
2	LEGEND AND NOTES
3	PROPERTY BOUNDARY SURVEY AND LEGAL DESCRIPTION
4	EXISTING CONDITIONS
5	ASH POND 2 EXISTING CONDITIONS
6	ASH POND 1 EXISTING CONDITIONS
7	ASH POND A EXISTING CONDITIONS
8	CCR REMOVAL PLAN
9	ASH POND 2 CCR REMOVAL PLAN
10	ASH POND 1 CCR REMOVAL PLAN
11	ASH POND A CCR REMOVAL PLAN
12	RESTORATION GRADING PLAN
13	ASH POND 2 RESTORATION GRADING PLAN
14	ASH POND 1 RESTORATION GRADING PLAN
15	ASH POND A RESTORATION GRADING PLAN
16	STORMWATER OUTFALL CHANNEL PLANS 1
17	STORMWATER OUTFALL CHANNEL PLANS 2
18	STORMWATER OUTFALL PROFILE
19	CULVERT DEMOLITION PLAN
20	CULVERT PLAN
21	CULVERT PROFILE
22	ASH POND A PROFILES
23	ASH POND 1 AND 2 PROFILES
24	DETAILS 1
25	ENVIRONMENTAL MONITORING PLAN



PREPARED FOR:



GENERAL MANAGER  
GEORGIA POWER ENVIRONMENTAL AFFAIRS  
241 RALPH MCGILL BLVD NE  
ATLANTA, GEORGIA 30308  
(404) 506-6505

PREPARED BY:



Environment & Infrastructure Solutions

2801 YORKMONT ROAD, SUITE 100  
CHARLOTTE, NORTH CAROLINA 28208  
TELEPHONE: (704) 357-8600

GA COA#: PEF000213  
EXPIRES 06/30/2022



DATE: APRIL, 2022



COVER SHEET

SHEET NUMBER:	REV. #
1	0
SHEET 1 OF 25 SHEETS	

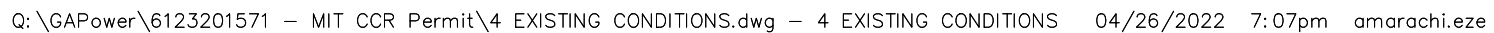








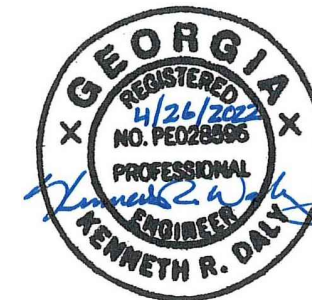




GA COA#: PEF000213  
EXPIRES 06/30/2022



PERMIT DRAWINGS  
NOT FOR CONSTRUCTION



NOT VALID WITHOUT  
SIGNATURE AND DATE

PROJECT:



# PLANT MITCHELL CCR SURFACE IMPOUNDMENT CLOSURES

ASH PONDS A, 1, AND 2  
CLOSURE-BY-REMOVAL  
MITCHELL AND DOUGHERTY  
COUNTIES, GEORGIA

PROJECT NO. 6123-20-1571

[illegible]

DESIGNED BY:	J. WRONA
DRAWN BY:	A. EZE
CHECKED BY:	K. DALY
APPROVED BY:	K. DALY
DATE:	04/26/2022

SHEET TITLE:

## EXISTING CONDITIONS

SHEET NUMBER:	REV. #
4	0
SHEET 4 OF 25 SHEETS	



PERMIT DRAWINGS  
NOT FOR CONSTRUCTION



NOT VALID WITHOUT  
SIGNATURE AND DATE

PROJECT:

 Georgia Power

# PLANT MITCHELL CCR SURFACE IMPOUNDMENT CLOSURES

ASH PONDS A, 1, AND 2  
CLOSURE-BY-REMOVAL  
MITCHELL AND DOUGHERTY  
COUNTIES, GEORGIA

PROJECT NO. 6123-20-1571

[illegible]

DESIGNED BY:	J. WRONA
DRAWN BY:	A. EZE
CHECKED BY:	K. DALY
APPROVED BY:	K. DALY
DATE:	04/26/2022

SHEET TITLE:

ASH POND 2 EXISTING  
CONDITIONS

SHEET NUMBER:		REV. #
5		0
SHEET	5	OF 25 SHEETS





NOT VALID WITHOUT  
SIGNATURE AND DATE

# PLANT MITCHELL CCR SURFACE IMPOUNDMENT CLOSURES

ASH PONDS A, 1, AND 2  
CLOSURE-BY-REMOVAL  
MITCHELL AND DOUGHERTY  
COUNTIES, GEORGIA

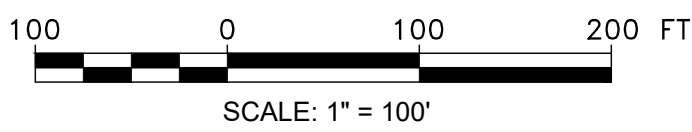
PROJECT NO. 6123-20-1571

DESIGNED BY:	J. WRONA
DRAWN BY:	A. EZE
CHECKED BY:	K. DALY
APPROVED BY:	K. DALY
DATE:	04/26/2022

SHEET TITLE:

ASH POND 1 EXISTING  
CONDITIONS

SHEET NUMBER:		REV. #
6		0
SHEET	6	OF 25 SHEETS





NOT VALID WITHOUT  
SIGNATURE AND DATE

# PLANT MITCHELL CCR SURFACE IMPOUNDMENT CLOSURES

ASH PONDS A, 1, AND 2  
CLOSURE-BY-REMOVAL  
MITCHELL AND DOUGHERTY  
COUNTIES, GEORGIA

PROJECT NO. 6123-20-1571

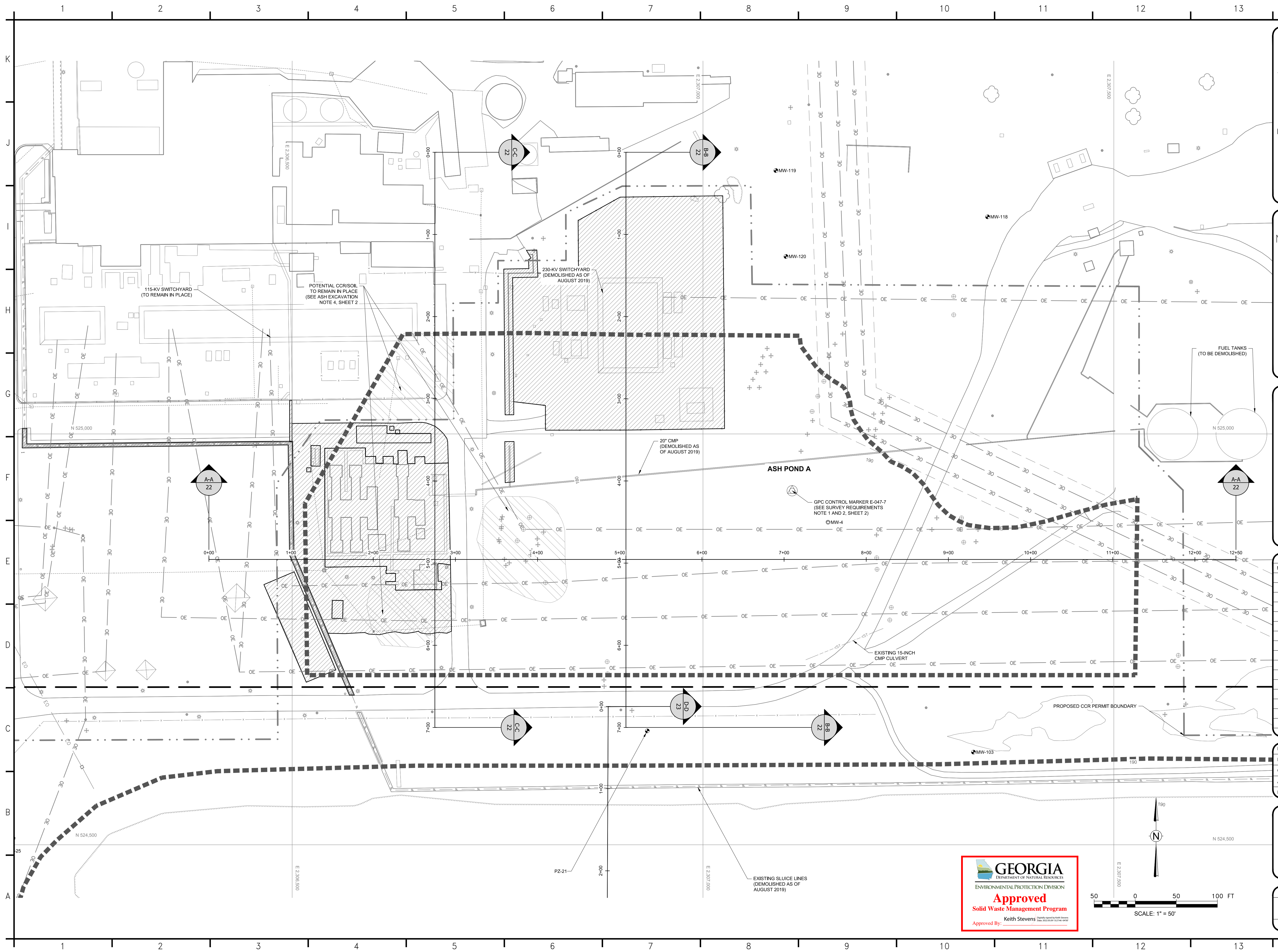
[illegible]

DESIGNED BY:	J. WRONA
DRAWN BY:	A. EZE
CHECKED BY:	K. DALY
APPROVED BY:	K. DALY
DATE:	04/26/2022

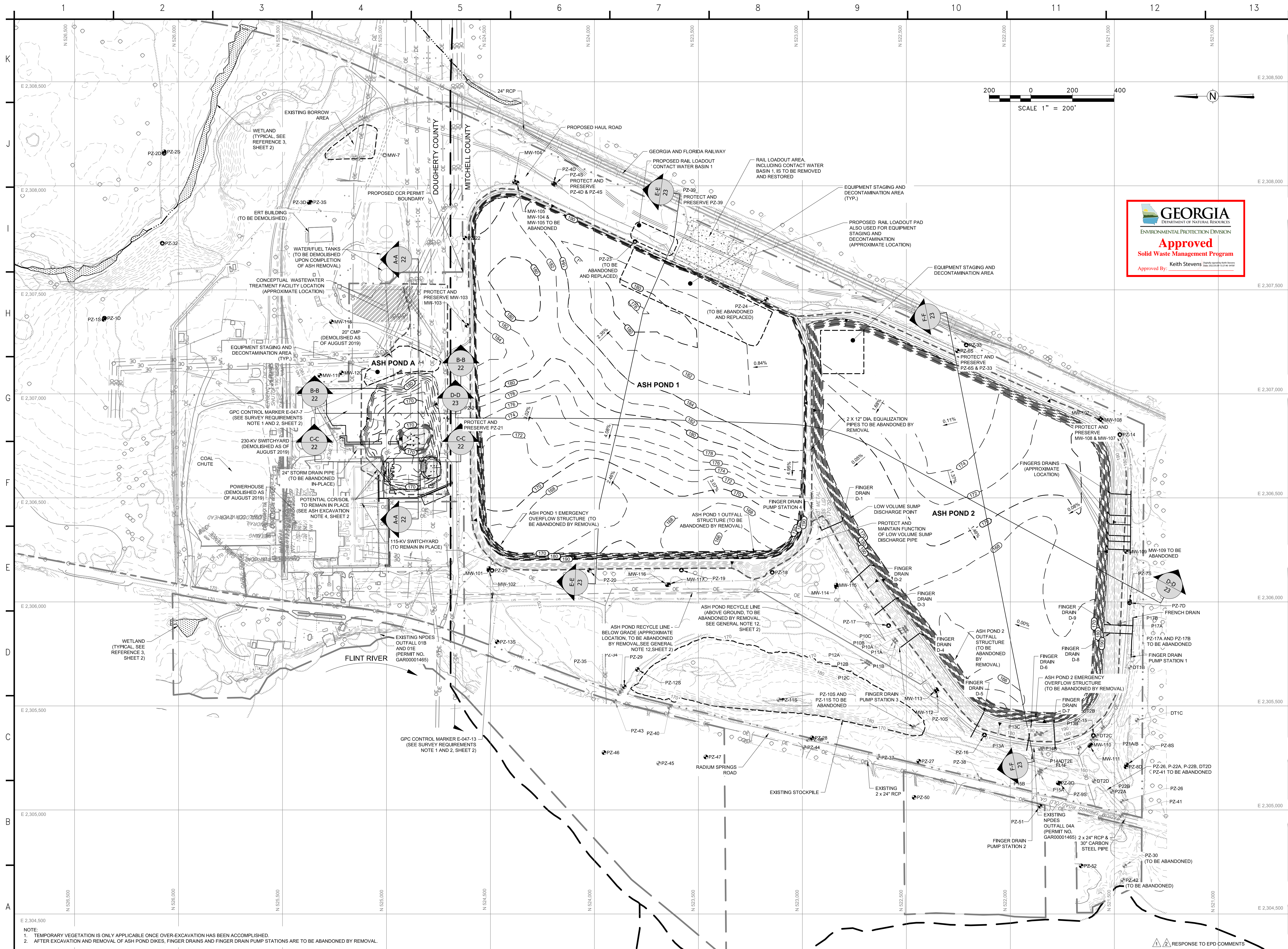
SHEET TITLE:

ASH POND A EXISTING  
CONDITIONS

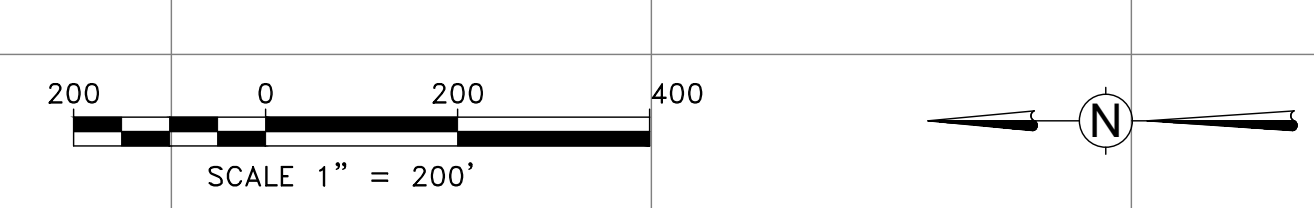
SHEET NUMBER:	REV. #
7	0
SHEET 7 OF 25 SHEETS	







NOTE:  
1. TEMPORARY VEGETATION IS ONLY APPLICABLE ONCE OVER-EXCAVATION HAS BEEN ACCOMPLISHED.  
2. AFTER EXCAVATION AND REMOVAL OF ASH POND DIKES, FINGER DRAINS AND FINGER DRAIN PUMP STATIONS ARE TO BE ABANDONED BY REMOVAL.



**wood.**

ENVIRONMENT & INFRASTRUCTURE SOLUTIONS  
2801 YORKMONT ROAD,  
SUITE 100  
CHARLOTTE, NC 28208  
TEL: (704) 357-8600

GA COA#: PEF000213  
EXPIRES 06/30/2022

PERMIT DRAWINGS  
NOT FOR CONSTRUCTION



NOT VALID WITHOUT  
SIGNATURE AND DATE

PROJECT:

**Georgia Power**  
PLANT MITCHELL CCR  
SURFACE IMPOUNDMENT  
CLOSURES

ASH PONDS A, 1, AND 2  
CLOSURE-BY-REMOVAL  
MITCHELL AND DOUGHERTY  
COUNTIES, GEORGIA

PROJECT NO. 6123-20-1571

REVISIONS			
NO.	DATE	BY	APPROVED
0	04/26/2022	A. EZE	K. DALY

DESIGNED BY:	J. WRONA
DRAWN BY:	A. EZE
CHECKED BY:	K. DALY
APPROVED BY:	K. DALY
DATE:	04/26/2022

SHEET TITLE:  
**CCR REMOVAL PLAN**

SHEET NUMBER:	REV. #
8	0
SHEET 8 OF 25 SHEETS	



GA COA#: PEF000213  
EXPIRES 06/30/2022

PERMIT DRAWINGS  
NOT FOR CONSTRUCTION



NOT VALID WITHOUT  
SIGNATURE AND DATE

PROJECT:



# PLANT MITCHELL CCR SURFACE IMPOUNDMENT CLOSURES

ASH PONDS A, 1, AND 2  
CLOSURE-BY-REMOVAL  
MITCHELL AND DOUGHERTY  
COUNTIES, GEORGIA

PROJECT NO. 6123-20-1571

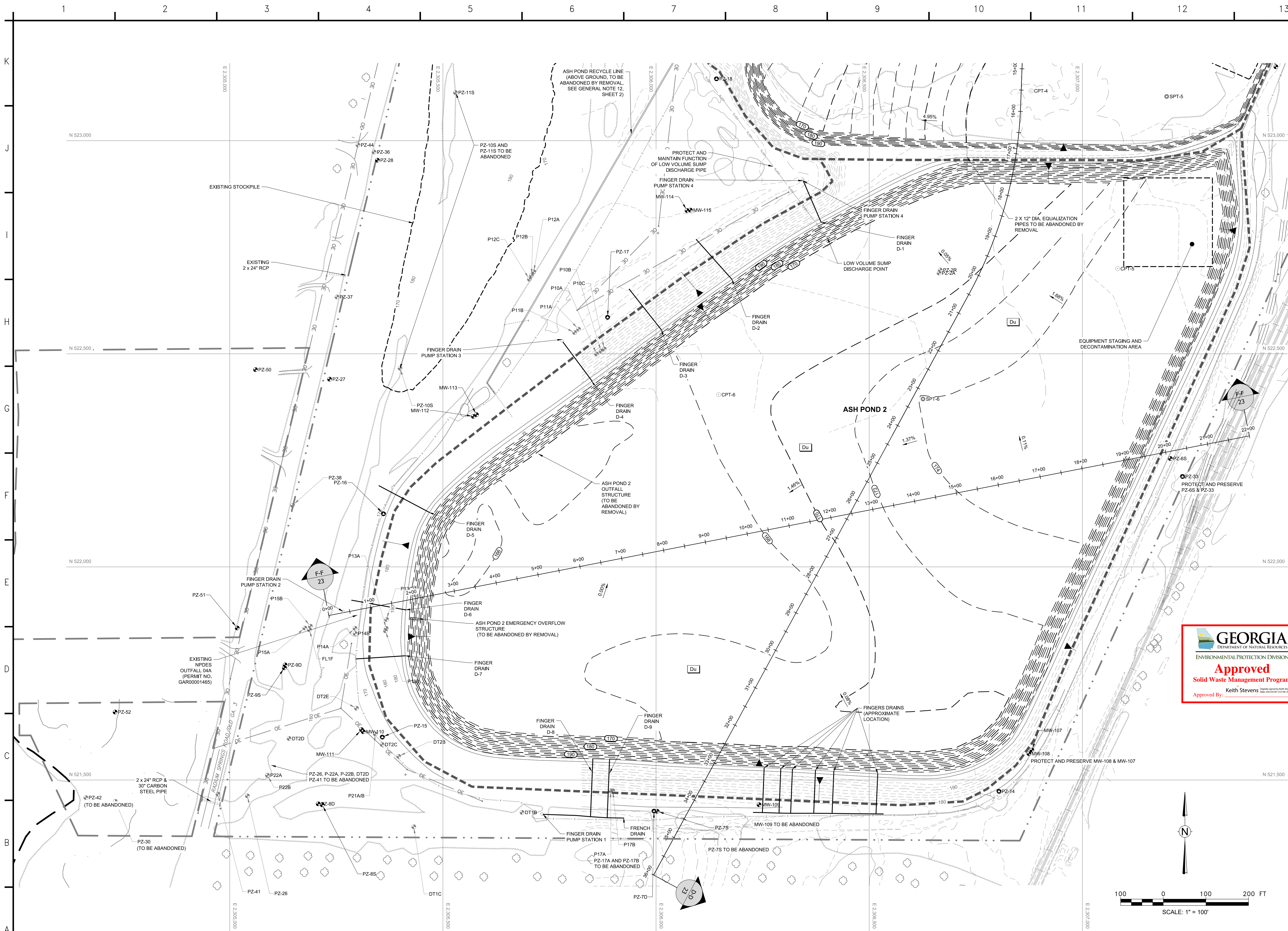
[illegible]

DESIGNED BY:	J. WRONA
DRAWN BY:	A. EZE
CHECKED BY:	K. DALY
APPROVED BY:	K. DALY
DATE:	04/26/2022

SHEET TITLE:

# ASH POND 2 CCR REMOVAL PLAN

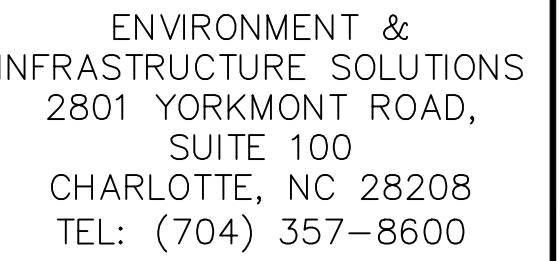
SHEET NUMBER:	REV. #
9	0
SHEET 9 OF 25 SHEETS	



NOTE:

1. TEMPORARY VEGETATION IS ONLY APPLICABLE ONCE OVER-EXCAVATION HAS BEEN ACCOMPLISHED.
2. AFTER EXCAVATION AND REMOVAL OF ASH POND DIKES, FINGER DRAINS AND FINGER DRAIN PUMP STATIONS ARE TO BE ABANDONED BY REMOVAL.





GA COA#: PEF000213  
EXPIRES 06/30/2022

PERMIT DRAWINGS  
NOT FOR CONSTRUCTION



NOT VALID WITHOUT  
SIGNATURE AND DATE

PROJECT:



# PLANT MITCHELL CCR SURFACE IMPOUNDMENT CLOSURES

ASH PONDS A, 1, AND 2  
CLOSURE-BY-REMOVAL  
MITCHELL AND DOUGHERTY  
COUNTIES, GEORGIA

PROJECT NO. 6123-20-1571

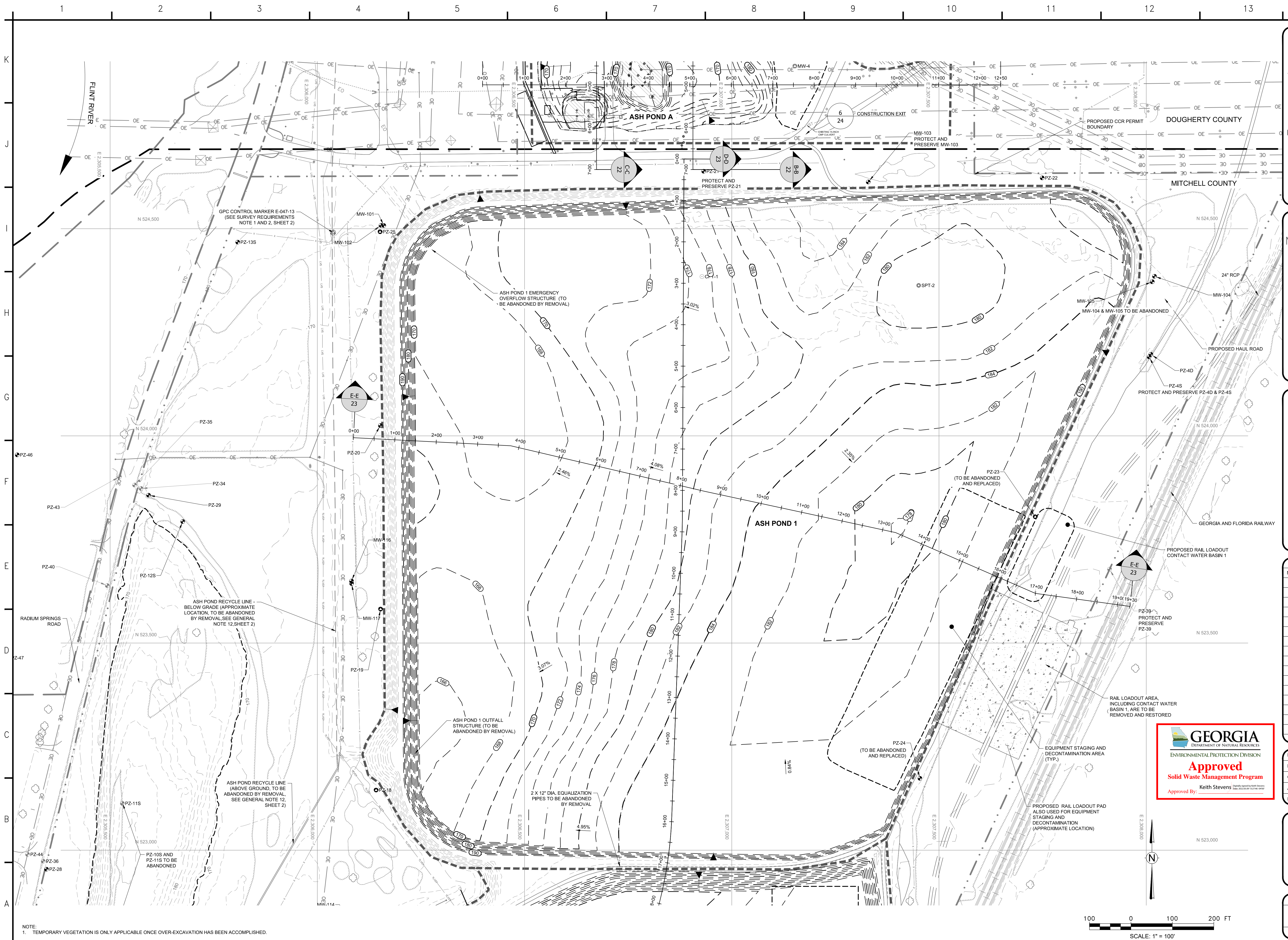
[illegible]

DESIGNED BY:	J. WRONA
DRAWN BY:	A. EZE
CHECKED BY:	K. DALY
APPROVED BY:	K. DALY
DATE:	04/26/2022

SHEET TITLE:

## ASH POND 1 CCR REMOVAL PLAN

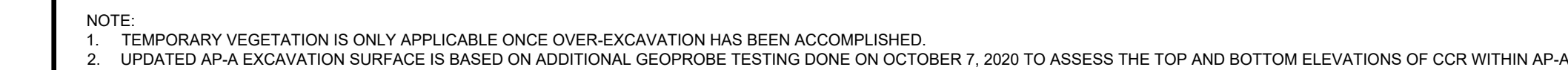
SHEET NUMBER:		REV. #	
10		0	
SHEET	10	OF	25 SHEETS



NOTE:  
1. TEMPORARY VEGETATION IS ONLY APPLICABLE ONCE OVER-EXCAVATION HAS BEEN ACCOMPLISHED

Q:\GAPower\6123201571 - MIT CCR Permit\8 CCR REMOVAL PLAN.dwg - 10 ASH POND 1 CCR REMOVAL PLAN 04/26/2022 5:45pm amarachi.eze

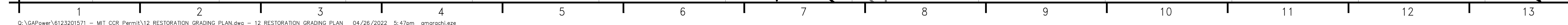




SHEET NUMBER:	REV. #
11	0
SHEET 11 OF 25 SHEETS	







GA COA#: PEF000213  
EXPIRES 06/30/2022

NOT VALID WITHOUT  
SIGNATURE AND DATE

PLANT MITCHELL CCR  
SURFACE IMPOUNDMENT  
CLOSURES

ASH PONDS A, 1, AND 2  
CLOSURE-BY-REMOVAL  
MITCHELL AND DOUGHERTY  
COUNTIES, GEORGIA

PROJECT NO. 6123-20-1571

DESIGNED BY:	J. WRONA
DRAWN BY:	A. EZE
CHECKED BY:	K. DALY
APPROVED BY:	K. DALY
DATE:	04/26/2022

SHEET TITLE:

RESTORATION  
GRADING PLAN

SHEET NUMBER:	REV. #
12	0
SHEET 12 OF 25 SHEETS	



A circular professional engineer seal for the state of Georgia. The outer ring contains the word "GEORGIA" at the top and "KENNETH R. DALY" at the bottom, separated by "X" marks. The inner circle contains the text "REGISTERED", the date "4/26/2022", the number "NO. PE028986", and the words "PROFESSIONAL ENGINEER". A blue ink signature, "Kenneth R. Daly", is written across the seal.

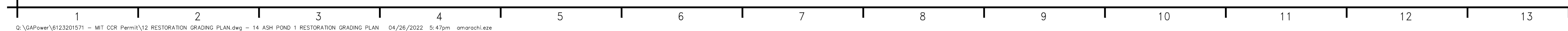
PROJECT NO. 6123-20-1571

DESIGNED BY:	J. WRONA
DRAWN BY:	A. EZE
CHECKED BY:	K. DALY
APPROVED BY:	K. DALY
DATE:	04/26/2022

SHEET NUMBER:		REV. #	
13		0	
SHEET	13	OF	25 SHEETS







GA COA#: PEF000213  
EXPIRES 06/30/2022

PERMIT DRAWINGS  
NOT FOR CONSTRUCTION



NOT VALID WITHOUT  
SIGNATURE AND DATE

PROJECT:



# PLANT MITCHELL CCR SURFACE IMPOUNDMENT CLOSURES

ASH PONDS A, 1, AND 2  
CLOSURE-BY-REMOVAL  
MITCHELL AND DOUGHERTY  
COUNTIES, GEORGIA

PROJECT NO. 6123-20-1571

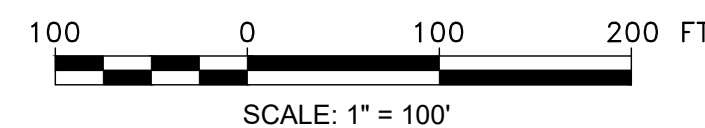
[illegible]

DESIGNED BY:	J. WRONA
DRAWN BY:	A. EZE
CHECKED BY:	K. DALY
APPROVED BY:	K. DALY
DATE:	04/26/2022

SHEET TITLE:

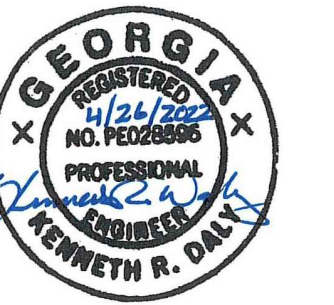
# ASH POND 1 RESTORATION GRADING PLAN

SHEET NUMBER:	REV. #
14	0
SHEET 14 OF 25 SHEETS	





PERMIT DRAWINGS  
NOT FOR CONSTRUCTION



NOT VALID WITHOUT  
SIGNATURE AND DATE

PROJECT:

 Georgia Power

# PLANT MITCHELL CCR SURFACE IMPOUNDMENT CLOSURES

ASH PONDS A, 1, AND 2  
CLOSURE-BY-REMOVAL  
MITCHELL AND DOUGHERTY  
COUNTIES, GEORGIA

PROJECT NO. 6123-20-1571

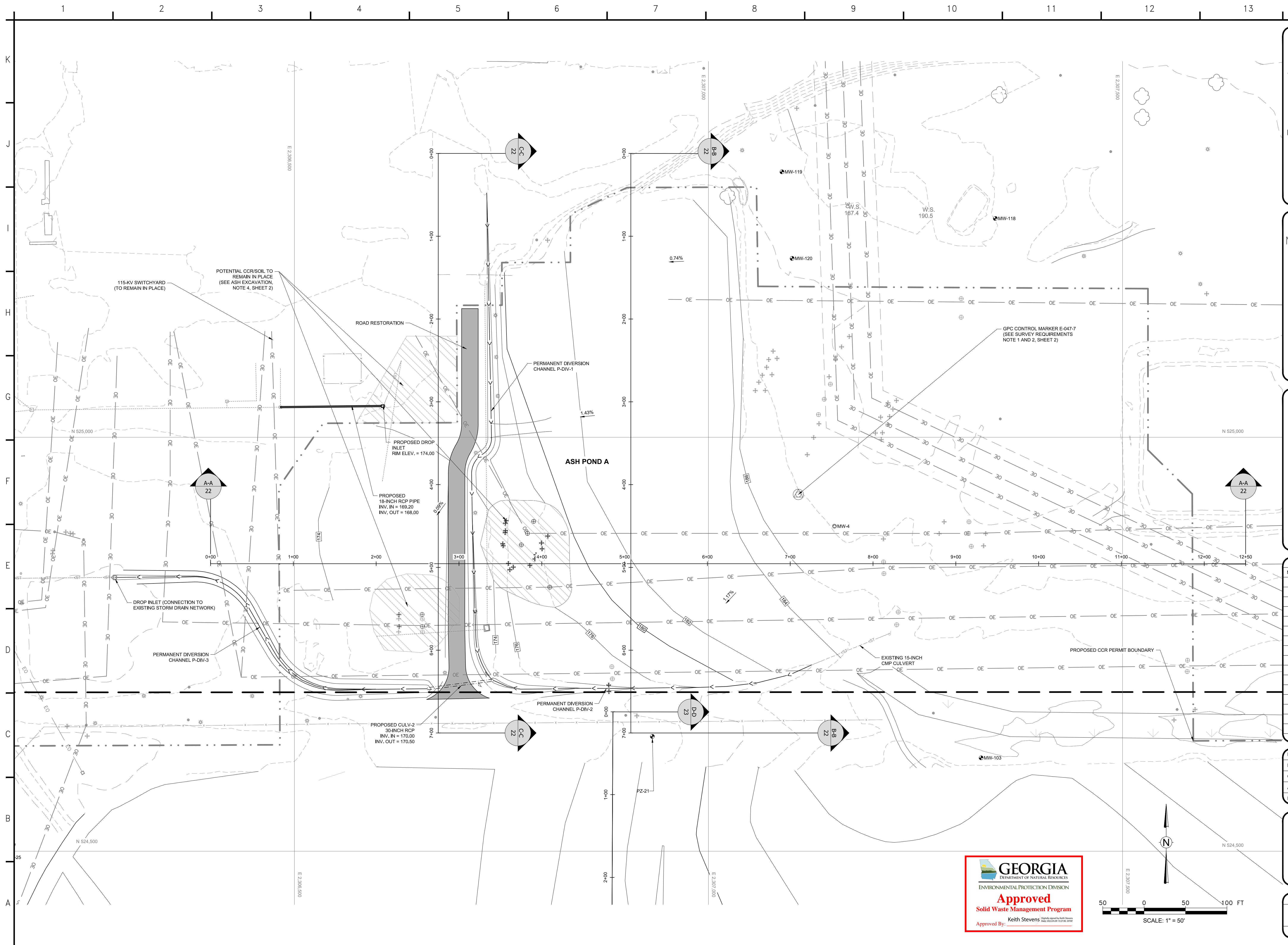
[illegible]

DESIGNED BY:	J. WRONA
DRAWN BY:	A. EZE
CHECKED BY:	K. DALY
APPROVED BY:	K. DALY
DATE:	04/26/2022

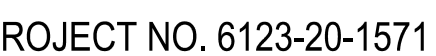
SHEET TITLE:

ASH POND A  
RESTORATION  
GRADING PLAN

SHEET NUMBER:	REV. #
15	0
SHEET 15 OF 25 SHEETS	





[illegible]

SHEET NUMBER:		REV. #
16		0
SHEET	16	OF 25 SHEETS









ENVIRONMENT &  
INFRASTRUCTURE SOLUTIONS  
2801 YORKMONT ROAD,  
SUITE 100  
CHARLOTTE, NC 28208  
TEL: (704) 357-8600

GA COA#: PEF000213  
EXPIRES 06/30/2022



NOT VALID WITHOUT  
SIGNATURE AND DATE

PROJECT:

 Georgia Power

# PLANT MITCHELL CCR SURFACE IMPOUNDMENT CLOSURES

ASH PONDS A, 1, AND 2  
CLOSURE-BY-REMOVAL  
MITCHELL AND DOUGHERTY  
COUNTIES, GEORGIA

PROJECT NO. 6123-20-1571

[illegible]

DESIGNED BY:	J. WRONA
DRAWN BY:	A. EZE
CHECKED BY:	K. DALY
APPROVED BY:	K. DALY
DATE:	04/26/2022

SHEET TITLE:

STORMWATER OUTFALL  
PROFILE

SHEET NUMBER:	REV. #
18	0
SHEET 18 OF 25 SHEETS	





GA COA#: PEF000213  
EXPIRES 06/30/2022



PROJECT:

 Georgia Power

ASH PONDS A, 1, AND 2  
CLOSURE-BY-REMOVAL  
MITCHELL AND DOUGHERTY  
COUNTIES, GEORGIA

[illegible]

DESIGNED BY:	J. WRONA
DRAWN BY:	A. EZE
CHECKED BY:	K. DALY
APPROVED BY:	K. DALY
DATE:	04/26/2022

## CULVERT DEMOLITION PLAN

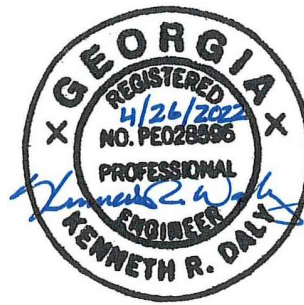
SHEET NUMBER:		REV. #	
19		0	
SHEET	19	OF	25 SHEETS





GA COA#: PEF000213  
EXPIRES 06/30/2022

PERMIT DRAWINGS  
NOT FOR CONSTRUCTION



NOT VALID WITHOUT  
SIGNATURE AND DATE

PROJECT:



# PLANT MITCHELL CCR SURFACE IMPOUNDMENT CLOSURES

ASH PONDS A, 1, AND 2  
CLOSURE-BY-REMOVAL  
MITCHELL AND DOUGHERTY  
COUNTIES, GEORGIA

PROJECT NO. 6123-20-1571

[illegible]

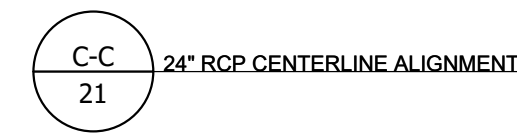
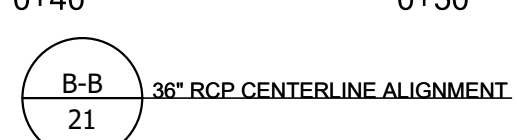
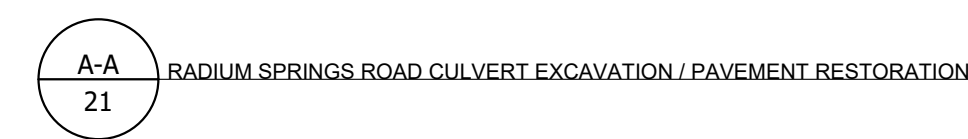
DESIGNED BY:	J. WRONA
DRAWN BY:	A. EZE
CHECKED BY:	K. DALY
APPROVED BY:	K. DALY
DATE:	04/26/2022

SHEET TITLE

## CULVERT PLAN

SHEET NUMBER:	REV. #
20	0
SHEET 20 OF 25 SHEETS	





SHEET NUMBER:	REV. #
21	0
SHEET 21 OF 25 SHEETS	



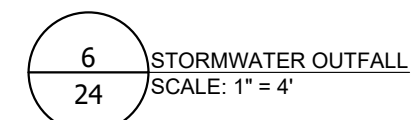
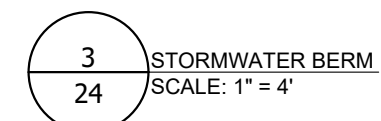
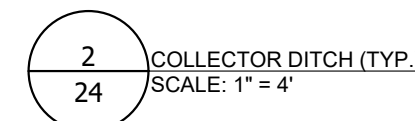
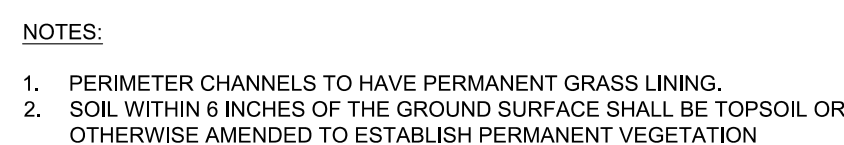
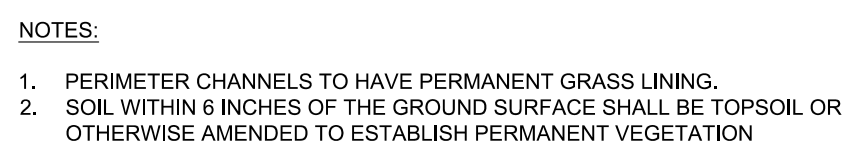








Channel ID	Channel Type	Bottom Width (b) (ft)	Depth (D) (ft)	Left Side Slope (Z <sub>L</sub> :H:V)	Right Side Slope (Z <sub>R</sub> :H:V)	Top Width (T) (ft)	Length (L) (ft)	Longitudinal Slope (S) (ft/ft)
CD-1	Collector	2	2	10	10	42	157	0.0064
CD-2	Collector	2	2	10	10	42	202	0.0198
CD-3	Collector	2	2	10	10	42	142	0.0352
CD-4	Collector	2	2	10	10	42	66	0.0303
CD-5	Collector	2	2	10	10	42	58	0.0345
CD-6	Collector	2	2	10	10	42	89	0.0169
CD-7	Collector	2	2	10	10	42	238	0.0126
CD-8	Collector	2	2	10	10	42	758	0.0053
CD-9	Collector	2	2	10	10	42	502	0.0060
CD-10	Collector	2	2	10	10	42	158	0.0127
CD-11	Collector	2	2	10	10	42	173	0.0058
CD-12	Collector	2	2	10	10	42	96	0.0188
CD-13	Collector	2	2	10	10	42	135	0.0156
CD-14	Collector	2	2	10	10	42	156	0.0135
CD-15	Collector	2	2	10	10	42	280	0.0068
CD-16	Collector	2	2	10	10	42	194	0.0052
CD-17	Collector	2	2	10	10	42	226	0.0066
CD-18	Collector	2	2	10	10	42	553	0.0063
CD-19	Collector	2	2	10	10	42	1741	0.0046
CD-20	Collector	2	2	10	10	42	372	0.0108
CD-21	Collector	2	2	10	10	42	378	0.0103

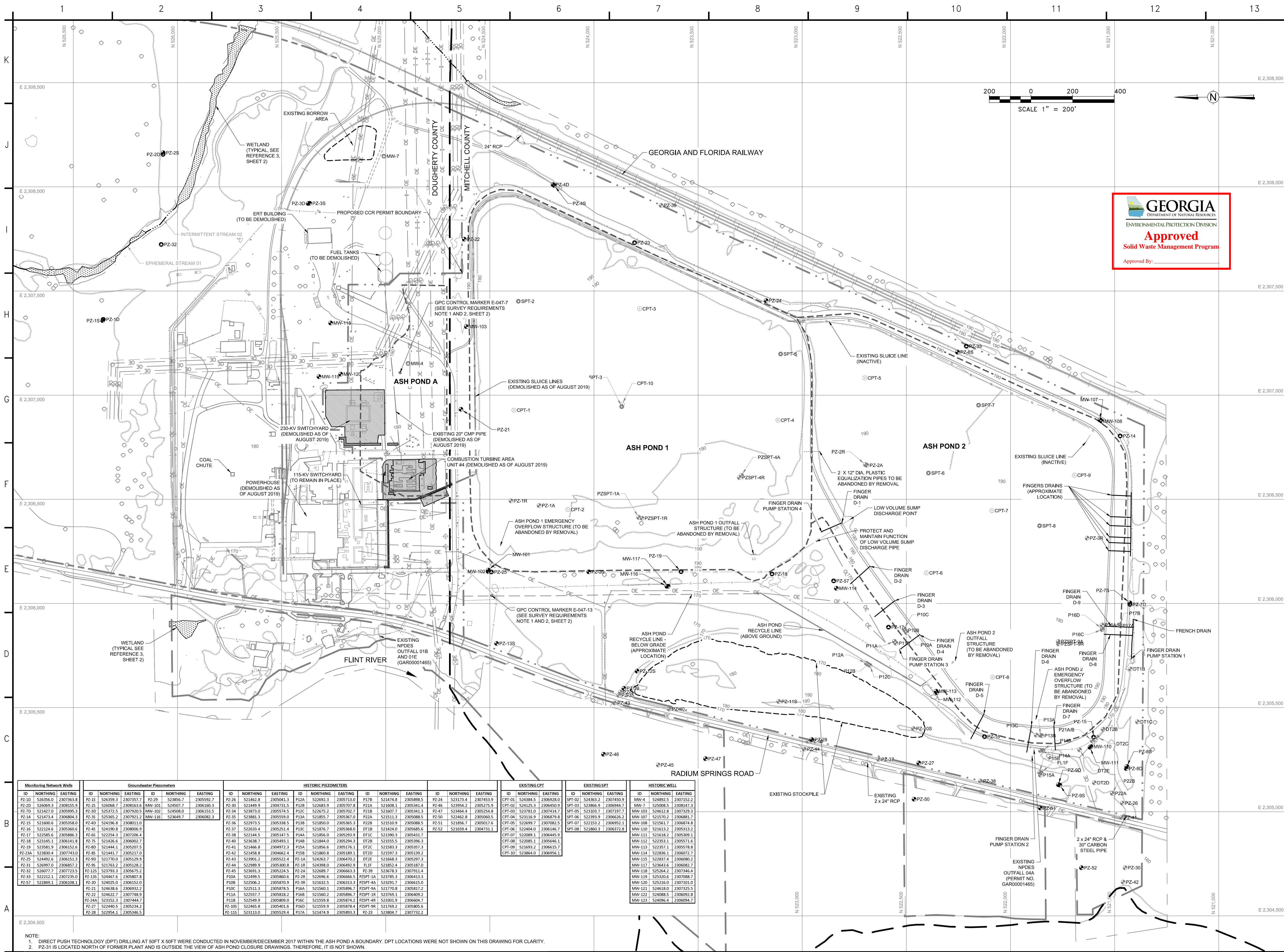


PROJECT NO. 6123-20-1571

DESIGNED BY:	J. WRONA
DRAWN BY:	A. EZE
CHECKED BY:	K. DALY
APPROVED BY:	K. DALY
DATE:	04/26/2022

SHEET NUMBER:	REV. #
24	0
SHEET 24 OF 25 SHEETS	





Monitoring Network Wells				Groundwater Piezometers				HISTORIC PIEZOMETERS								EXISTING CPT				EXISTING SPT				HISTORIC WELL											
ID	NORTHING	EASTING		ID	NORTHING	EASTING		ID	NORTHING	EASTING		ID	NORTHING	EASTING		ID	NORTHING	EASTING		ID	NORTHING	EASTING		ID	NORTHING	EASTING									
PZ-10	526596.0	2307363.8		PZ-15	526593.9	2307357.7		PZ-26	521462.8	2305041.3		P12A	522692.3	2305710.3		P17B	521474.8	2305898.5		PZ-24	521373.4	2305435.9		CPT-01	524384.5	2306928.0		SPT-02	524363.2	2307450.9		MW-4	524892.5	2307152.2	
PZ-20	526605.3	2308153.9		PZ-25	526608.7	2308143.6		PZ-29	521468.9	2305041.3		P12A	522683.9	2305707.1		P18A	521608.1	2305341.4		PZ-26	521395.4	2305925.7		CPT-02	524125.3	2306450.9		SPT-03	524116.3	2306944.7		MW-7	525008.5	2308047.3	
PZ-30	526615.3	2308995.3		PZ-30	525372.5	2307920.5		PZ-38	523873.0	2305574.5		P12C	522675.2	2305702.7		P21B	521607.7	2305341.3		PZ-27	521446.4	2306254.8		CPT-03	523781.0	2307414.7		SPT-04	523703.7	2307197.7		MW-103	524612.8	2307329.3	
PZ-40	521473.4	2306804.3		PZ-45	525365.2	2307921.2		PZ-50	523881.3	2305559.0		P12A	521855.7	2305637.0		P21B	521591.3	2305341.3		PZ-28	521446.4	2306254.8		CPT-04	523116.9	2306879.8		SPT-05	522393.9	2306626.2		MW-107	521570.2	2306881.7	
PZ-50	521473.4	2306804.3		PZ-55	521473.4	2306804.3		PZ-60	521473.4	2306804.3		P13B	521850.0	2305365.2		P21B	521510.9	2305088.5		PZ-29	521473.4	2306254.8		CPT-05	522699.7	2307082.5		SPT-06	522153.2	2306992.1		MW-108	521561.7	2306874.8	
PZ-60	521473.4	2306804.3		PZ-65	521473.4	2306804.3		PZ-70	521473.4	2306804.3		P13C	521876.7	2305339.8		OT1B	521424.0	2305685.6		PZ-30	521473.4	2306254.8		CPT-06	522404.0	2306464.9		SPT-07	522153.2	2306992.1		MW-110	521613.2	2305313.2	
PZ-70	521473.4	2306804.3		PZ-75	521473.4	2306804.3		PZ-80	521473.4	2306804.3		P14A	521856.0	2305203.0		OT1C	521390.3	2305431.7		PZ-31	521473.4	2306254.8		CPT-07	522089.1	2306445.9		SPT-08	521880.3	2306372.8		MW-111	521618.2	2305309.1	
PZ-80	521473.4	2306804.3		PZ-85	521473.4	2306804.3		PZ-90	521473.4	2306804.3		P14B	521858.7	2305203.4		OT1B	521390.3	2305431.7		PZ-32	521473.4	2306254.8		CPT-08	522085.1	2306446.1		SPT-09	521880.3	2306372.8		MW-112	522353.1	2305571.6	
PZ-90	521473.4	2306804.3		PZ-95	521473.4	2306804.3		PZ-100	521473.4	2306804.3		P14C	521866.8	2305176.1		OT2C	521390.3	2305431.7		PZ-33	521473.4	2306254.8		CPT-09	521880.3	2306372.8		SPT-10	521880.3	2306372.8		MW-113	522357.1	2305578.8	
PZ-100	521473.4	2306804.3		PZ-105	521473.4	2306804.3		PZ-110	521473.4	2306804.3		P14B	521866.8	2305176.1		OT2C	521390.3	2305431.7		PZ-34	521473.4	2306254.8		CPT-10	521880.3	2306372.8		SPT-11	521880.3	2306372.8		MW-114	522357.1	2305578.8	
PZ-110	521473.4	2306804.3		PZ-115	521473.4	2306804.3		PZ-120	521473.4	2306804.3		P14B	521866.8	2305176.1		OT2C	521390.3	2305431.7		PZ-35	521473.4	2306254.8		CPT-11	521880.3	2306372.8		SPT-12	521880.3	2306372.8		MW-115	522357.1	2305578.8	
PZ-120	521473.4	2306804.3		PZ-125	521473.4	2306804.3		PZ-130	521473.4	2306804.3		P14B	521866.8	2305176.1		OT2C	521390.3	2305431.7		PZ-36	521473.4	2306254.8		CPT-12	521880.3	2306372.8		SPT-13	521880.3	2306372.8		MW-116	522357.1	2305578.8	
PZ-130	521473.4	2306804.3		PZ-135	521473.4	2306804.3		PZ-140	521473.4	2306804.3		P14B	521866.8	2305176.1		OT2C	521390.3	2305431.7		PZ-37	521473.4	2306254.8		CPT-13	521880.3	2306372.8		SPT-14	521880.3	2306372.8		MW-117	522357.1	2305578.8	
PZ-140	521473.4	2306804.3		PZ-145	521473.4	2306804.3		PZ-150	521473.4	2306804.3		P14B	521866.8	2305176.1		OT2C	521390.3	2305431.7		PZ-38	521473.4	2306254.8		CPT-14	521880.3	2306372.8		SPT-15	521880.3	2306372.8		MW-118	522357.1	2305578.8	
PZ-150	521473.4	2306804.3		PZ-155	521473.4	2306804.3		PZ-160	521473.4	2306804.3		P14B	521866.8	2305176.1		OT2C	521390.3	2305431.7		PZ-39	521473.4	2306254.8		CPT-15	521880.3	2306372.8		SPT-16	521880.3	2306372.8		MW-119	522357.1	2305578.8	
PZ-160	521473.4	2306804.3		PZ-165	521473.4	2306804.3		PZ-170	521473.4	2306804.3		P14B	521866.8	2305176.1		OT2C	521390.3	2305431.7		PZ-40	521473.4	2306254.8		CPT-16	521880.3	2306372.8		SPT-17	521880.3	2306372.8		MW-120	522357.1	2305578.8	
PZ-170	521473.4	2306804.3		PZ-175	521473.4	2306804.3		PZ-180	521473.4	2306804.3		P14B	521866.8	2305176.1		OT2C	521390.3	2305431.7		PZ-41	521473.4	2306254.8		CPT-17	521880.3	2306372.8		SPT-18	521880.3	2306372.8		MW-121	522357.1	2305578.8	
PZ-180	521473.4	2306804.3		PZ-185	521473.4	2306804.3		PZ-190	521473.4	2306804.3		P14B	521866.8	2305176.1		OT2C	521390.3	2305431.7		PZ-42	521473.4	2306254.8		CPT-18	521880.3	2306372.8		SPT-19	521880.3	2306372.8		MW-122	522357.1	2305578.8	
PZ-190	521473.4	2306804.3		PZ-195	521473.4	2306804.3		PZ-200	521473.4	2306804.3		P14B	521866.8	2305176.1		OT2C	521390.3	2305431.7		PZ-43	521473.4	2306254.8		CPT-19	521880.3	2306372.8		SPT-20	521880.3	2306372.8		MW-123	522357.1	2305578.8	
PZ-200	521473.4	2306804.3		PZ-205	521473.4	2306804.3		PZ-210	521473.4	2306804.3		P14B	521866.8	2305176.1		OT2C	521390.3	2305431.7		PZ-44	521473.4	2306254.8		CPT-20	521880.3	2306372.8		SPT-21	521880.3	2306372.8					
PZ-210	521473.4	2306804.3		PZ-215	521473.4	2306804.3		PZ-220	521473.4	2306804.3		P14B	521866.8	2305176.1		OT2C	521390.3	2305431.7		PZ-45	521473.4	2306254.8		CPT-21	521880.3	2306372.8		SPT-22	521880.3	2306372.8					
PZ-220	521473.4	2306804.3		PZ-225	521473.4	2306804.3		PZ-230	521473.4	2306804.3		P14B	521866.8	2305176.1		OT2C	521390.3	2305431.7		PZ-46	521473.4	2306254.8		CPT-22	521880.3	2306372.8		SPT-23	521880.3	2306372.8					
PZ-230	521473.4	2306804.3		PZ-235	521473.4	2306804.3		PZ-240	521473.4	2306804.3		P14B	521866.8	2305176.1		OT2C	521390.3	2305431.7		PZ-47	521473.4	2306254.8		CPT-23	521880.3	2306372.8		SPT-24	521880.3	2306372.8					
PZ-240	521473.4	2306804.3		PZ-245	521473.4	2306804.3		PZ-250	521473.4	2306804.3		P14B	521866.8	2305176.1		OT2C	521390.3	2305431.7		PZ-48	521473.4	2306254.8		CPT-24	521880.3	2306372.8		SPT-25	521880.3	2306372.8					
PZ-250	521473.4	2306804.3		PZ-255	521473.4	2306804.3		PZ-260	521473.4	2306804.3		P14B	521866.8	2305176.1		OT2C	521390.3	2305431.7		PZ-49	521473.4	2306254.8		CPT-25	521880.3	2306372.8		SPT-26	521880.3	2306372.8					
PZ-260	521473.4	2306804.3		PZ-265	521473.4	2306804.3		PZ-270	521473.4	2306804.3		P14B	521866.8	2305176.1		OT2C	521390.3	2305431.7		PZ-50	521473.4	2306254.8		CPT-26	521880.3	2306372.8		SPT-27	521880.3	2306372.8					
PZ-270	521473.4	2306804.3		PZ-275	521473.4	2306804.3		PZ-280	521473.4	2306804.3		P14B	521866.8	2305176.1		OT2C	521390.3	2305431.7		PZ-51	521473.4	2306254.8		CPT-27	521880.3	2306372.8		SPT-28	521880.3	2306372.8					
PZ-280	521473.4	2306804.3		PZ-285	521473.4	2306804.3		PZ-290	521473.4	2306804.3		P14B	521866.8	2305176.1		OT2C	521390.3	2305431.7		PZ-52	521473.4	2306254.8		CPT-28	521880.3	2306372.8		SPT-29	521880.3	2306372.8					
PZ-290	521473.4	2306804.3		PZ-295	521473.4	2306804.3		PZ-300	521473.4	2306804.3		P14B	521866.8	2305176.1		OT2C	521390.3	2305431.7		PZ-53	521473.4	2306254.8		CPT-29	521880.3	2306372.8		SPT-30	521880.3	2306372.8					
PZ-300	521473.4	2306804.3		PZ-305	521473.4	2306804.3		PZ-310	521473.4	2306804.3		P14B	521866.8	2305176.1		OT2C	521390.3	2305431.7		PZ-54	521473.4	2306254.8		CPT-30	521880.3	2306372.8		SPT-31	521880.3	2306372.8					
PZ-310	521473.4	2306804.3		PZ-315	521473.4	2306804.3		PZ-320	521473.4	2306804.3		P14B	521866.8	2305176.1		OT2C	521390.3	2305431.7		PZ-55	521473.4	2306254.8		CPT-31	521880.3	2306372.8		SPT-32	521880.3	2306372.8					
PZ-320	521473.4	2306804.3		PZ-325	521473.4	2306804.3		PZ-330	521473.4	2306804.3		P14B	521866.8	2305176.1		OT2C	521390.3	2305431.7		PZ-56	521473.4	2306254.8		CPT-32	521880.3	2306372.8		SPT-33	521880.3	2306372.8					
PZ-330	521473.4	2306804.3		PZ-335	521473.4	2306804.3		PZ-340	521473.4	2306804.3		P14B	521866.8	2305176.1		OT2C	521390.3	2305431.7		PZ-57	521473.4	2306254.8		CPT-33	521880.3	2306372.8		SPT-34	521880.3	2306372.8					
PZ-340	521473.4	2306804.3		PZ-345	521473.4	2306804.3		PZ-350	521473.4	2306804.3</																									