

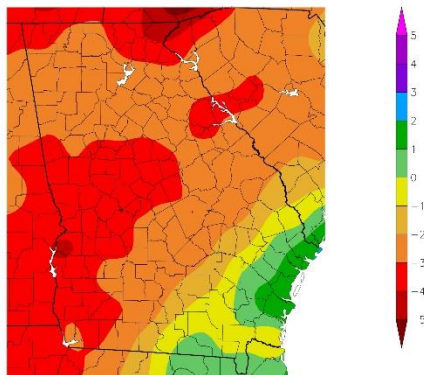
# November 2021 Climate Summary – Georgia

Nyasha Dunkley and Henian Zhang

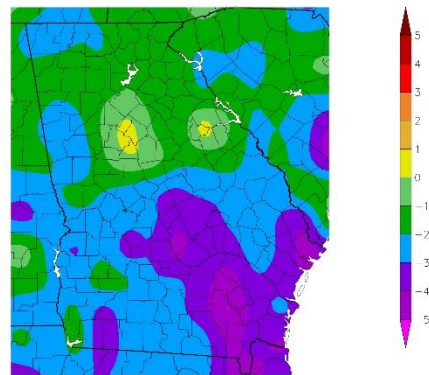
State of Georgia Climate Office

The month of November was characterized by cooler and drier conditions across much of the state. The average statewide temperature of 52.5°F fell 1.7° below the normal of 54.2°F. Average precipitation statewide of 1.09 inches fell 1.78 inches below normal, as abnormally dry conditions spread across the region. A strong Nor'easter event from November 5<sup>th</sup> through November 7<sup>th</sup> led to a 24-hour rainfall amount of 3.19 inches on the 5<sup>th</sup> and 6<sup>th</sup> across coastal Georgia, as St. Simons Island recorded the 5<sup>th</sup> highest rainfall total on record for the month of November. The cool, rainy conditions also led to all-time record low daytime temperatures during that period for areas across southeast Georgia.

Departure from Normal Precipitation (in)  
11/1/2021 – 11/30/2021



Departure from Normal Temperature (F)  
11/1/2021 – 11/30/2021

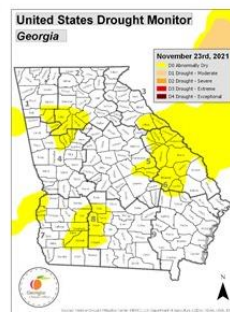
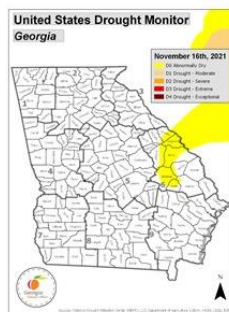
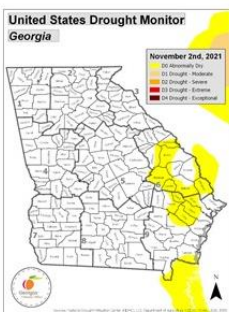


Generated 12/20/2021 @ HPRCC using provisional data.

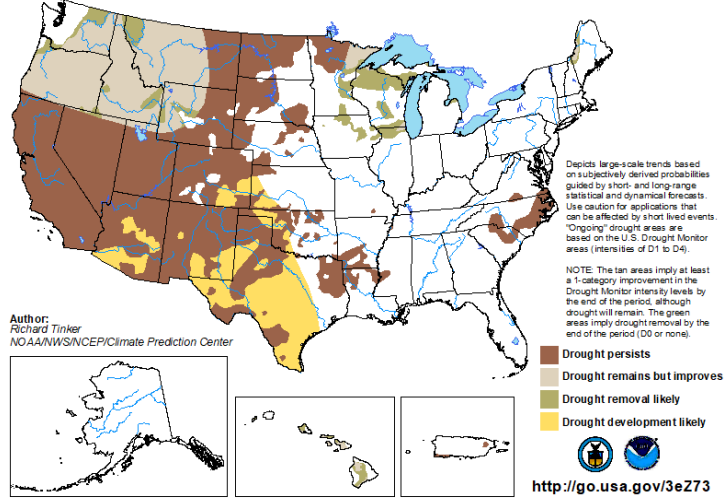
NOAA Regional Climate Centers Generated 12/20/2021 @ HPRCC using provisional data.

NOAA Regional Climate Centers

Parts of Georgia began to become dry due to lack of rainfall and breezy, stable weather conditions. According to the U.S. Drought Monitor, about 39% of Georgia was under abnormally dry conditions (D0) by the end of November. The seasonal outlook from the Climate Prediction Center suggests low tendency for drought development over Georgia for the November through February period.



**U.S. Seasonal Drought Outlook** Valid for November 18, 2021 - February 28, 2022  
**Drought Tendency During the Valid Period** Released November 18, 2021



According to the Climate Prediction Center, La Niña is present and likely to continue through the winter 2021-2022 (~90%) and into spring 2022 (~50% chance during March-May). The seasonal outlook from the Climate Prediction Center for December, January, and February favors above normal temperatures and below normal rainfall for Georgia.

