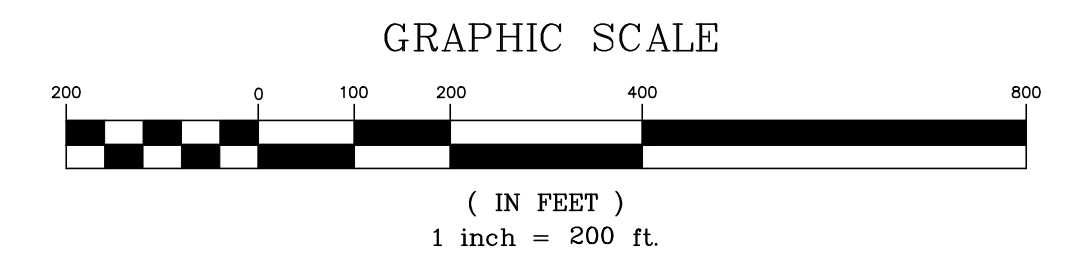


- GENERAL NOTES:**
1. All land disturbing activities shall conform to the minimum requirements for conservation and engineering practices as published by the Georgia Soil and Water Conservation Commission in the latest edition of the Manual for Erosion and Sediment Control in Georgia.
 2. Monitoring of surface waters during construction shall be in accordance with the NPDES General Permit for Stand Alone Projects (GAR 100001) for Construction Activities and the Guideline for Construction Monitoring contained in the EPD Guidance Document for Design and Operational Plans, Nov. 1993. A copy of this guideline is enclosed as part of the Supplemental Information Report for the Design and Operational Plan for this facility. The discharge from the clear pools during operation will be monitored under a NPDES General Permit for Storm Water Discharge Associated with Industrial Activities.
 3. Areas designated for excavation, earth fill, ditches, and diversions shall be cleared, grubbed, and stripped of any trees, brush, stumps, and vegetation prior to excavation. Clearing limits shall be held at a minimum. No clearing will be performed in the 200' Buffer, except for direct ingress and egress and for access for monitoring well installation.
 4. Trees, debris and other vegetation removed during the clearing, grubbing, and stripping operations shall not be disposed of inside the Site Boundary. This material shall be disposed of in accordance with local ordinances.
 5. A borrow investigation shall be conducted to locate suitable material for compacted earth fill, clay liner, and final cover material.
 6. All earthen structures are engineered to withstand a horizontal acceleration of 0.22g.
 7. Existing site horizontal and vertical survey control monuments NC-5 and NC-6 are indicated on drawing H-15062. The proposed location of the Survey Control Monument for construction activities is shown on this drawing and on drawing H-15062.
 8. The corners of the Site Boundary and Buffer Zone shall be established and identified by 1/2 inch iron pins (rebar). 4"x4" marker posts shall also be set in order to identify the corners. The limits of the Buffer Zone shall be visibly marked to ensure no construction activities will be performed in the Buffer Zone.
 9. The control of CCR waste placement at the facility shall be established from the survey control monument.
 10. Bollards are to be placed on each side of the containment piping along route with a liner spacing of 18'-0" unless otherwise specified.
 11. The ash transfer and water pipelines will be routed or extended to a new portable ash conditioning (PAC) machine location within future cells 5/6 and 7/8 as the cells are developed.



- LEGEND:**
- TOP OF ROCK BORING/TEMPORARY PIEZOMETER LOCATION
 - SOIL BORING/TEMPORARY PIEZOMETER LOCATION
 - DEEP BORING/TEMPORARY PIEZOMETER LOCATION
 - PROPERTY LINE
 - SITE BOUNDARY
 - 200' BUFFER
 - FAVORABLE/UNFAVORABLE AREA DELINEATION
 - EXISTING GROUND CONTOURS
 - FINAL GRADE CONTOURS
 - FENCE

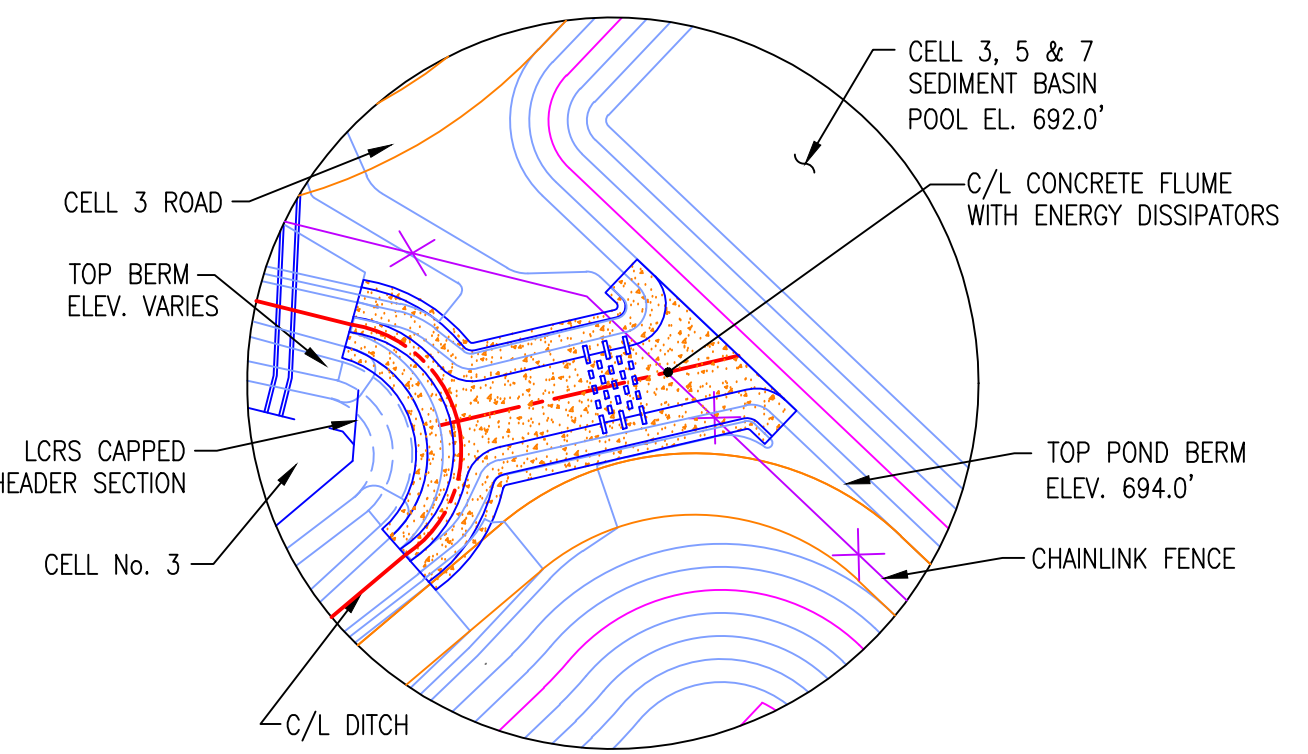
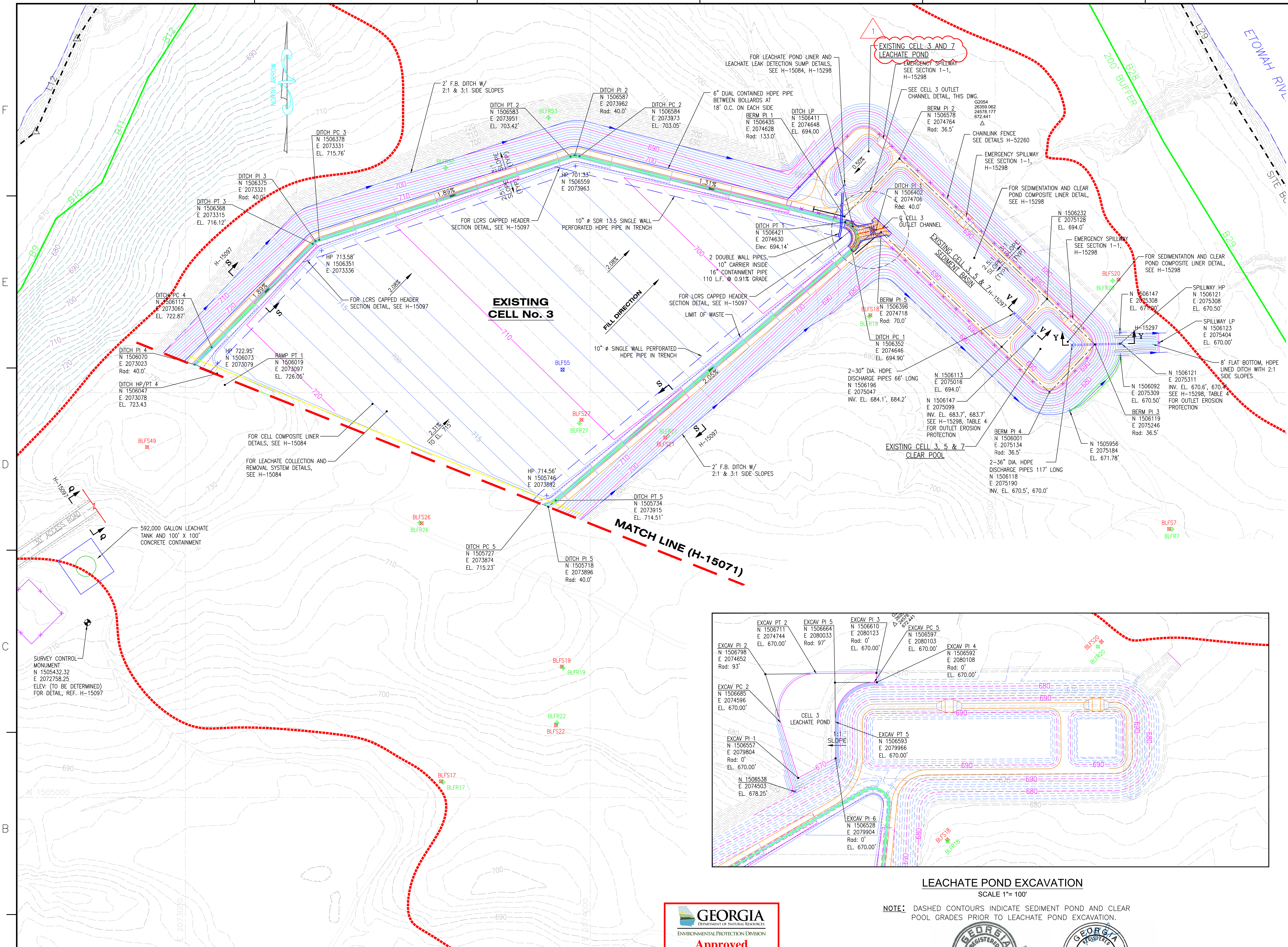
- NOTES:**
1. TOPOGRAPHIC SURVEY COMPLETED MAY 27, 2004.
 2. HORIZONTAL AND VERTICAL CONTROL PROVIDED BY GEORGIA POWER COMPANY LAND DEPARTMENT.
 3. THE 100 YEAR FLOOD HAZARD BOUNDARY AND ELEVATIONS WERE OBTAINED FROM FEMA MAP NO. 13015C0245H, EFFECTIVE DATE, 10-05-2018.

REFERENCE DRAWINGS:

1. FOR A COMPLETE DRAWING LIST SEE SHEET H-15061.

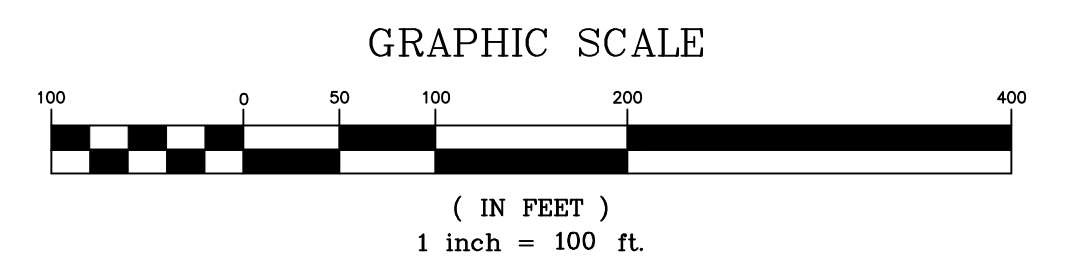


REVISION		DATE		REVISION		DATE		REVISION		DATE		REVISION		DATE		GEORGIA POWER COMPANY														
						ISSUED FOR MINOR MODIFICATION (BY HHNT) REVISED CELLS 5 AND 6 TO INCLUDE AN INNERCELL LEACHATE SUMP AND PUMP, STORMWATER PIPES TO CONVEY WATER TO THE SEDIMENT BASINS, AND AN ACCESS ROAD CONNECTING CELLS 3,5,7 PONDS TO CELL 5 ACCESS ROAD						ISSUED FOR PERMIT						PLANT BOWEN CCR DISPOSAL FACILITY GENERAL SITE DEVELOPMENT CELL LAYOUT												
BY	CHK'D	CIVIL APPR	ELECT APPR	I/C APPR	MECH APPR	MGR APPR	BY	CHK'D	CIVIL APPR	ELECT APPR	I/C APPR	MECH APPR	MGR APPR	BY	CHK'D	CIVIL APPR	ELECT APPR	I/C APPR	MECH APPR	MGR APPR	SCALE	PROJ. I.D.	DRAWING NUMBER			SH	CONTD	REV		
														ANR	RBL							1"=200'	10207	H-15063			1	FINAL	1	



CELL No. 3 OUTLET CHANNEL DETAIL

NOTE: DASHED CONTOURS INDICATE CLOSURE OF OUTLET CHANNEL AS THE CELL IS FILLED.



- LEGEND:**
- TOP OF ROCK BORING/TEMPORARY PIEZOMETER LOCATION
 - SOIL BORING/TEMPORARY PIEZOMETER LOCATION
 - DEEP BORING/TEMPORARY PIEZOMETER LOCATION
 - SITE BOUNDARY
 - 200' BUFFER
 - FAVORABLE/UNFAVORABLE AREA DELINEATION
 - LIMIT OF WASTE
 - FENCE
 - EXISTING GROUND CONTOURS
 - FINAL GRADE CONTOURS
 - LCRS PIPES, 10" Ø

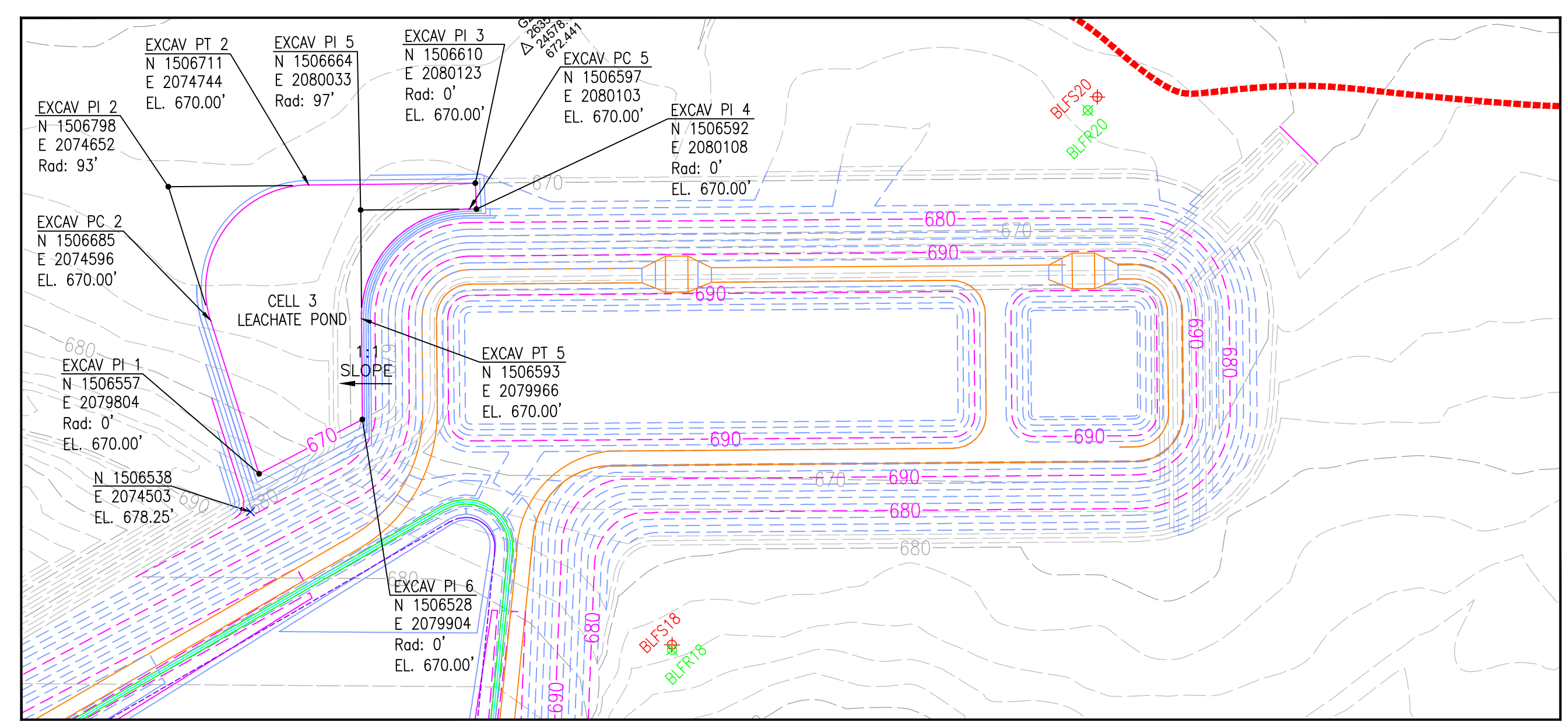
- EROSION CONTROL LEGEND**
- Sd1 SILT FENCE (SEE H-15299)
 - D1 DIVERSION (SEE H-15299)
 - Dn1 TEMPORARY DOWNDRAIN (SEE H-15296)
 - Lv LEVEL SPREADER
 - Ds3 DISTURBED AREA STABILIZATION (PERMANENT VEGETATION, SEE H-15303)

NOTES:

1. ALL EARTHEN STRUCTURES ARE ENGINEERED TO WITHSTAND A MAXIMUM HORIZONTAL ACCELERATION OF 0.22g.

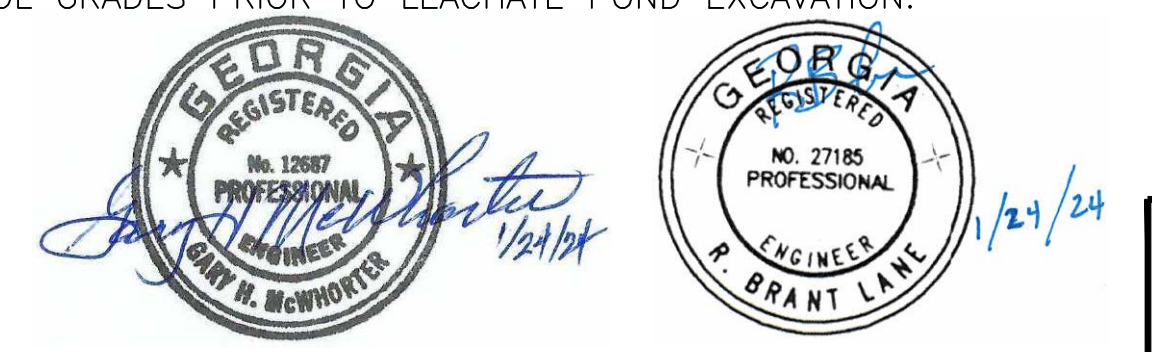
REFERENCE DRAWINGS:

1. FOR A COMPLETE DRAWING LIST SEE SHEET H-15061.
2. SEE SHEET H-15063 FOR GENERAL NOTES AND REFERENCES.

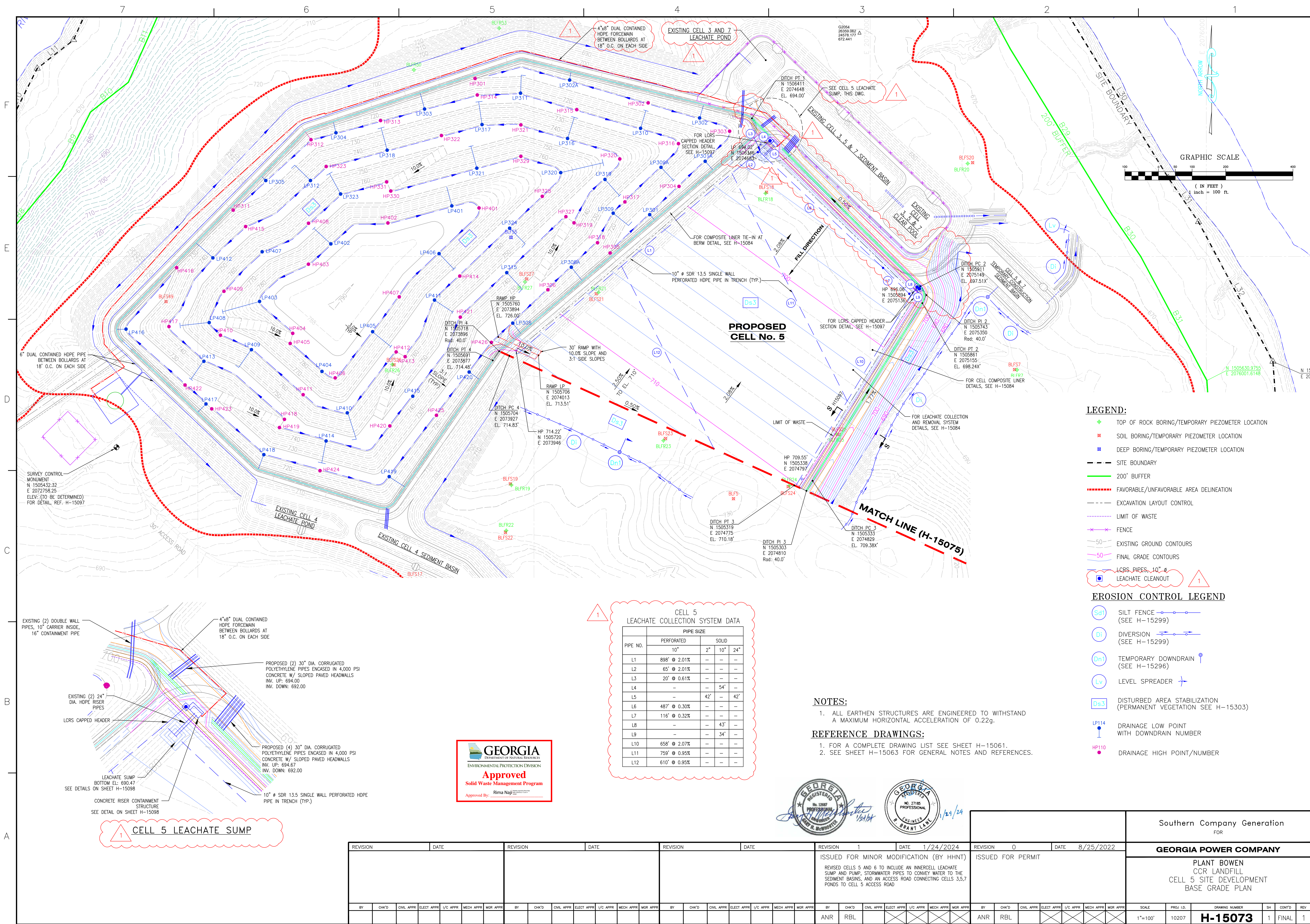


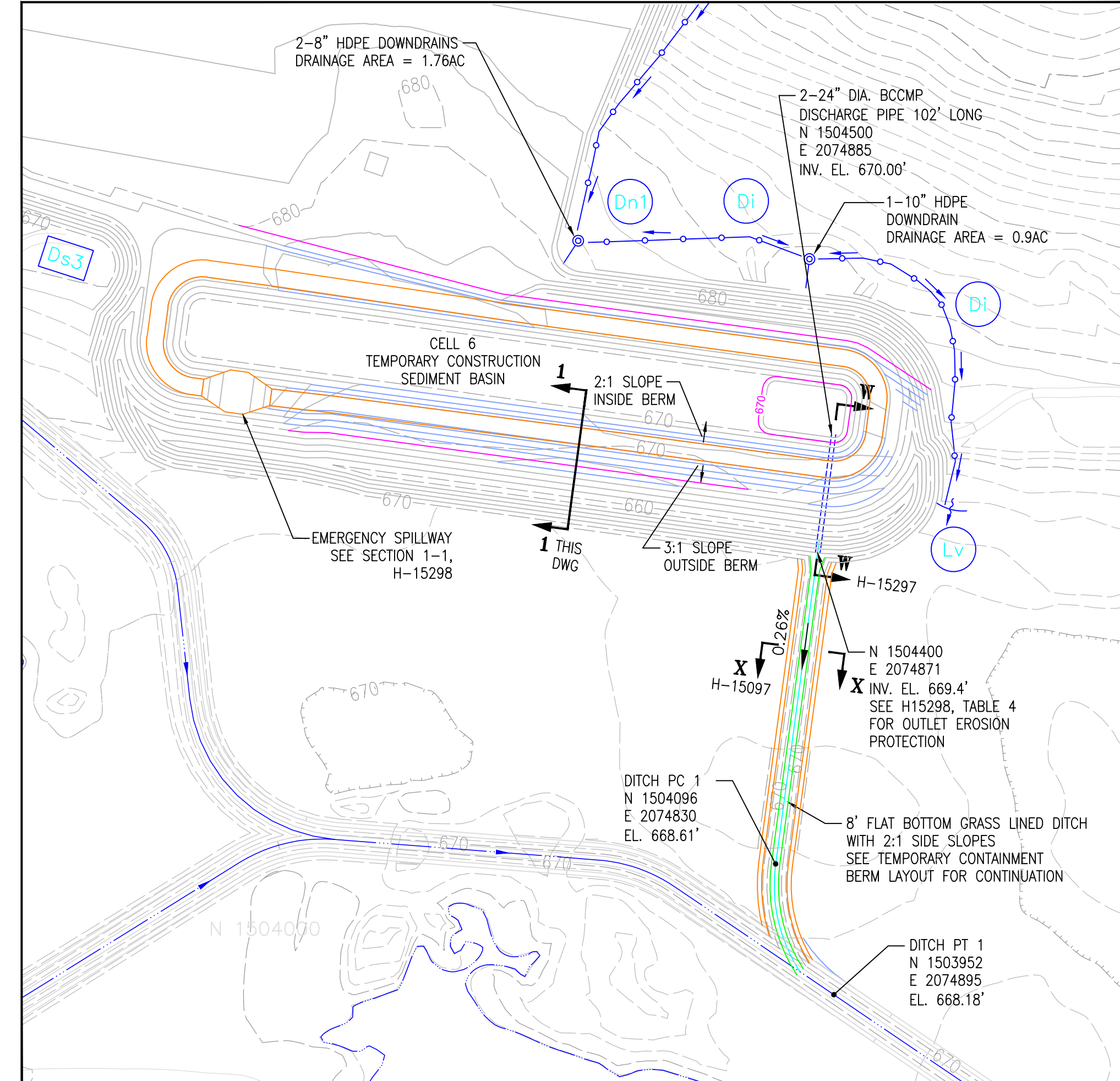
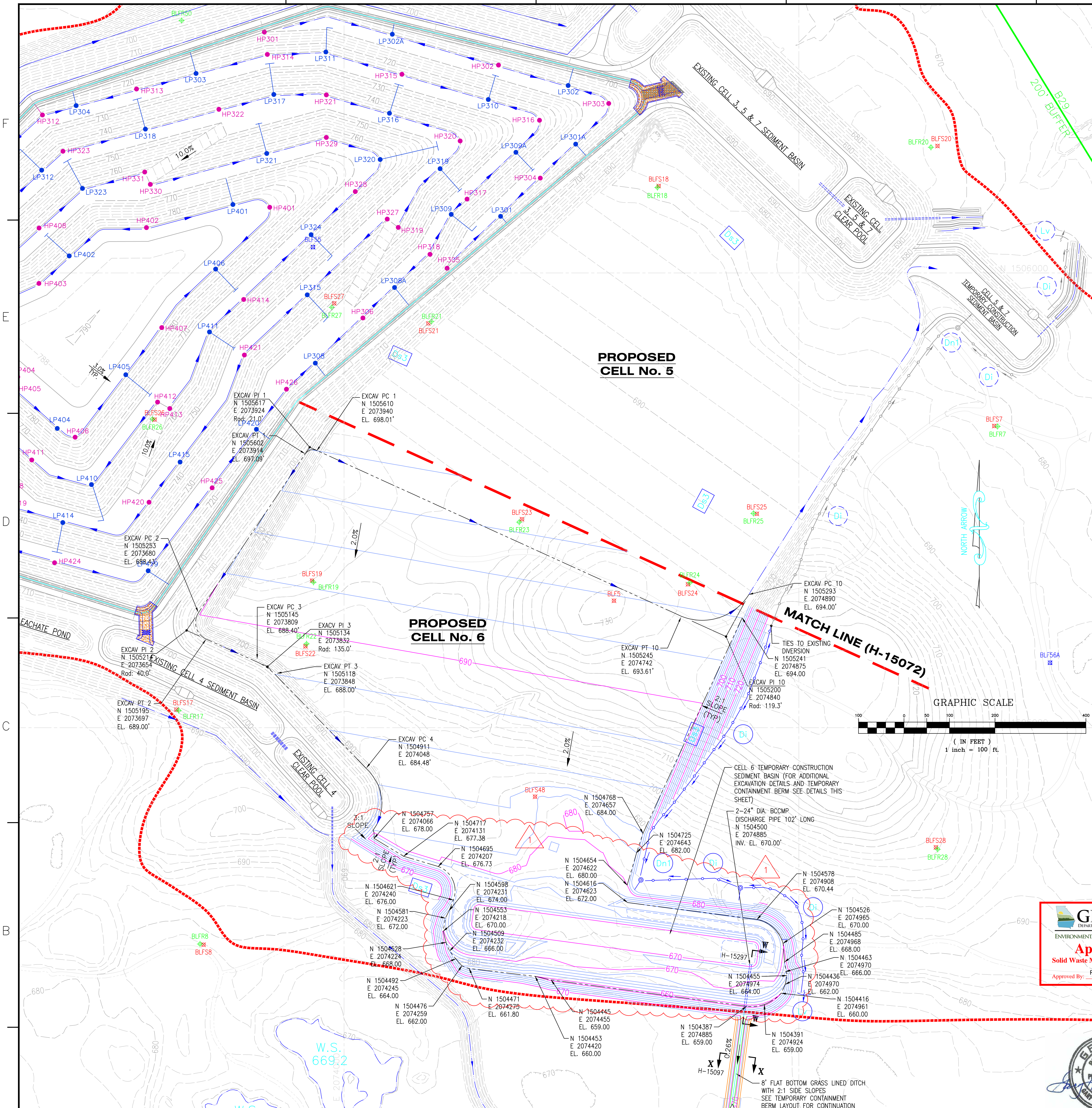
LEACHATE POND EXCAVATION
SCALE 1"=100'

NOTE: DASHED CONTOURS INDICATE SEDIMENT POND AND CLEAR POOL GRADES PRIOR TO LEACHATE POND EXCAVATION.

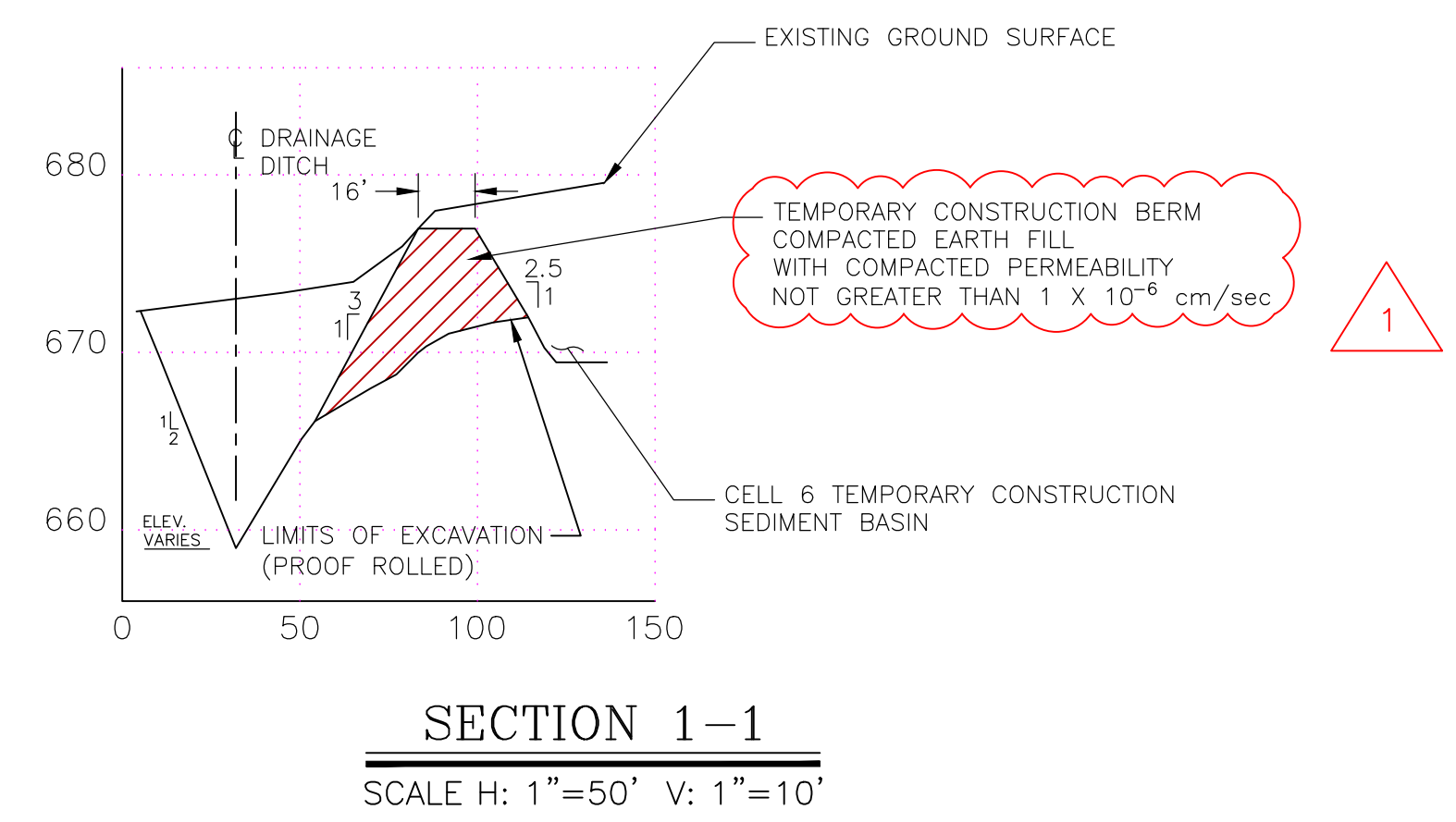


REVISION							DATE							REVISION							DATE							REVISION							DATE							REVISION							DATE							REVISION							DATE																																																
																												ISSUED FOR MINOR MODIFICATION (BY HNHT) REVISED CELLS 5 AND 6 TO INCLUDE AN INNERCELL LEACHATE SUMP AND PUMP, STORMWATER PIPES TO CONVEY WATER TO THE SEDIMENT BASINS, AND AN ACCESS ROAD CONNECTING CELLS 3,5,7 PONDS TO CELL 5 ACCESS ROAD																												ISSUED FOR PERMIT																												GEORGIA POWER COMPANY																											
																																																																																				PLANT BOWEN CCR LANDFILL CELL 3 SITE DEVELOPMENT BASE GRADE PLAN																											
BY	CHK'D	CIVL APPR	ELECT APPR	I/C APPR	MECH APPR	MGR APPR	BY	CHK'D	CIVL APPR	ELECT APPR	I/C APPR	MECH APPR	MGR APPR	BY	CHK'D	CIVL APPR	ELECT APPR	I/C APPR	MECH APPR	MGR APPR	BY	CHK'D	CIVL APPR	ELECT APPR	I/C APPR	MECH APPR	MGR APPR	BY	CHK'D	CIVL APPR	ELECT APPR	I/C APPR	MECH APPR	MGR APPR	SCALE	PROJ. I.D.	DRAWING NUMBER			SH	CONTD	REV																																																																					
																																			1"=100'	10207	H-15069			1	FINAL	0																																																																					





1 TEMPORARY CONTAINMENT BERM
SCALE 1"= 100'



- LEGEND:**

 - Top of rock boring/temporary piezometer location
 - Soil boring/temporary piezometer location
 - Deep boring/temporary piezometer location
 - Property line
 - Site boundary
 - 200' buffer
 - Favorable/unfavorable area delineation
 - Excavation layout control
 - Existing ground contours
 - Final grade contours
- EROSION CONTROL LEGEND**

 - Silt fence (see H-15299)
 - Diversion (see H-15299)
 - Temporary down drain (see H-15296)
 - Level spreader
 - Disturbed area stabilization (permanent vegetation see H-15303)
 - Drainage low point with down drain number
 - Drainage high point/number

NOTES:

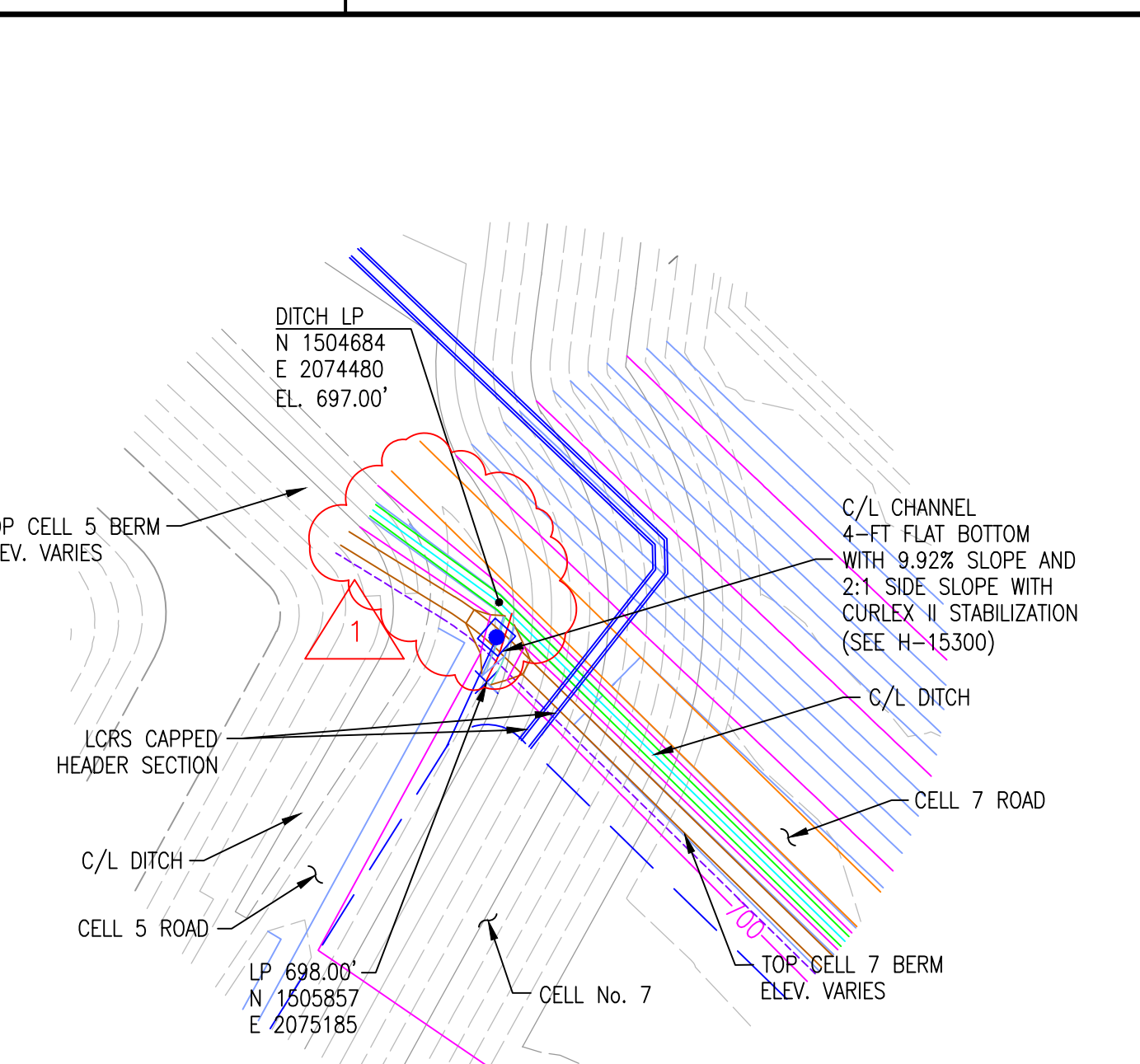
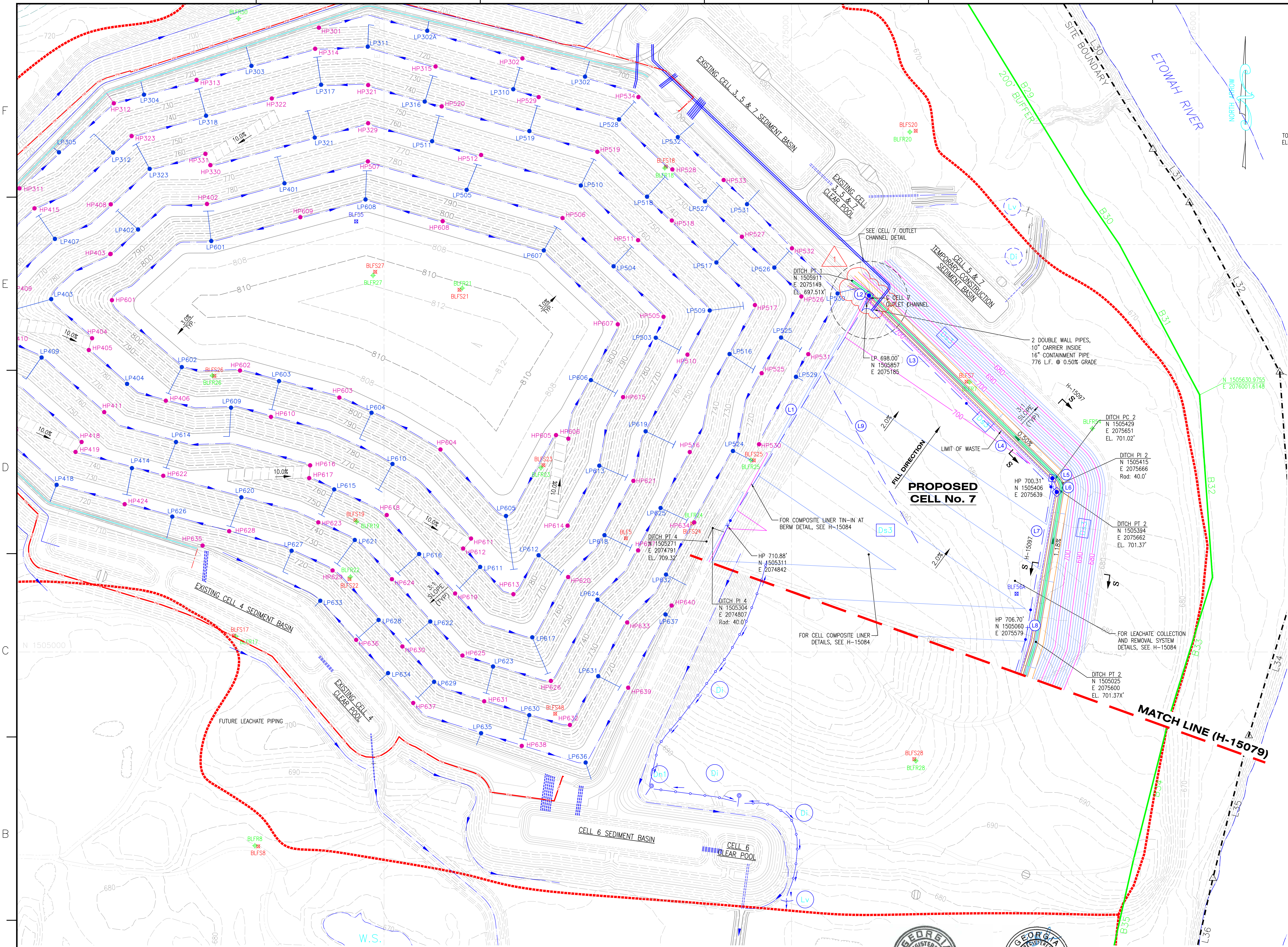
1. ALL EARTHEN STRUCTURES ARE ENGINEERED TO WITHSTAND A MAXIMUM HORIZONTAL ACCELERATION OF 0.22g.

REFERENCE DRAWINGS:

1. FOR A COMPLETE DRAWING LIST SEE SHEET H-15061.
2. SEE SHEET H-15063 FOR GENERAL NOTES AND REFERENCES.



REVISION						REVISION						REVISION						REVISION						REVISION					
DATE						DATE						DATE						DATE						DATE					
BY						BY						BY						BY						BY					
CHK'D						CHK'D						CHK'D						CHK'D						CHK'D					
CIVIL APPR						CIVIL APPR						CIVIL APPR						CIVIL APPR						CIVIL APPR					
ELECT APPR						ELECT APPR						ELECT APPR						ELECT APPR						ELECT APPR					
I/C APPR						I/C APPR						I/C APPR						I/C APPR						I/C APPR					
MECH APPR						MECH APPR						MECH APPR						MECH APPR						MECH APPR					
MGR APPR						MGR APPR						MGR APPR						MGR APPR						MGR APPR					
ISSUED FOR MINOR MODIFICATION (BY HNHT)						ISSUED FOR PERMIT						ISSUED FOR PERMIT						ISSUED FOR PERMIT						ISSUED FOR PERMIT					
REVISED CELLS 5 AND 6 TO INCLUDE AN INNERCELL LEACHATE SUMP AND PUMP, STORMWATER PIPES TO CONVEY WATER TO THE SEDIMENT BASINS, AND AN ACCESS ROAD CONNECTING CELLS 3,5,7 PONDS TO CELL 5 ACCESS ROAD																													
ANR						RBL												ANR						ANR					
SCALE						PROJ. I.D.						DRAWING NUMBER						SH						CONTO					
AS SHOWN						10207						H-15074						1						FINAL					



CELL No. 7 OUTLET CHANNEL DETAIL
NOTE: DASHED CONTOURS INDICATE CLOSURE OF OUTLET CHANNEL AS THE CELL IS FILLED.

CELL 7 LEACHATE COLLECTION SYSTEM DATA		
PIPE NO.	PIPE SIZE	
	PERFORATED	SOLID
L1	633' @ 2.00%	-
L2	-	40'
L3	316' @ 0.32%	-
L4	290' @ 0.66%	-
L5	-	35'
L6	-	33'
L7	301' @ 1.82%	-
L8	74' @ 2.48%	-
L9	456' @ 0.90%	-

- LEGEND:**
- TOP OF ROCK BORING/TEMPORARY PIEZOMETER LOCATION
 - SOIL BORING/TEMPORARY PIEZOMETER LOCATION
 - DEEP BORING/TEMPORARY PIEZOMETER LOCATION
 - SITE BOUNDARY
 - 200' BUFFER
 - FAVORABLE/UNFAVORABLE AREA DELINEATION
 - LIMIT OF WASTE
 - FENCE
 - EXISTING GROUND CONTOURS
 - FINAL GRADE CONTOURS
 - LOCS PIPES, 10" & LEACHATE CLEANOUT
- EROSION CONTROL LEGEND**
- SILT FENCE (SEE H-15299)
 - DIVERSION (SEE H-15299)
 - TEMPORARY DOWNDRAIN (SEE H-15296)
 - LEVEL SPREADER
 - DISTURBED AREA STABILIZATION (PERMANENT VEGETATION SEE H-15303)
 - DRAINAGE LOW POINT WITH DOWNDRAIN NUMBER
 - DRAINAGE HIGH POINT/NUMBER
 - CHECKDAM
 - CONSTRUCTION EXIT
 - AREA STABILIZATION (TEMPORARY VEGETATION)

NOTES:

- ALL EARTHEN STRUCTURES ARE ENGINEERED TO WITHSTAND A MAXIMUM HORIZONTAL ACCELERATION OF 0.22g.

REFERENCE DRAWINGS:

- FOR A COMPLETE DRAWING LIST SEE SHEET H-15061.
- SEE SHEET H-15063 FOR GENERAL NOTES AND REFERENCES.

GRAPHIC SCALE

(IN FEET)

1 inch = 100 ft.

GEORGIA
DEPARTMENT OF NATURAL RESOURCES
ENVIRONMENTAL PROTECTION DIVISION

Approved
Solid Waste Management Program

Approved By: Rima Najjar

REVISION	DATE	REVISION	DATE	REVISION	DATE	REVISION	DATE
BY	CHK'D	CIVIL APPR	ELECT APPR	I/C APPR	MECH APPR	MGR APPR	
BY	CHK'D	CIVIL APPR	ELECT APPR	I/C APPR	MECH APPR	MGR APPR	
BY	CHK'D	CIVIL APPR	ELECT APPR	I/C APPR	MECH APPR	MGR APPR	
BY	CHK'D	CIVIL APPR	ELECT APPR	I/C APPR	MECH APPR	MGR APPR	

Southern Company Generation
FOR

GEORGIA POWER COMPANY

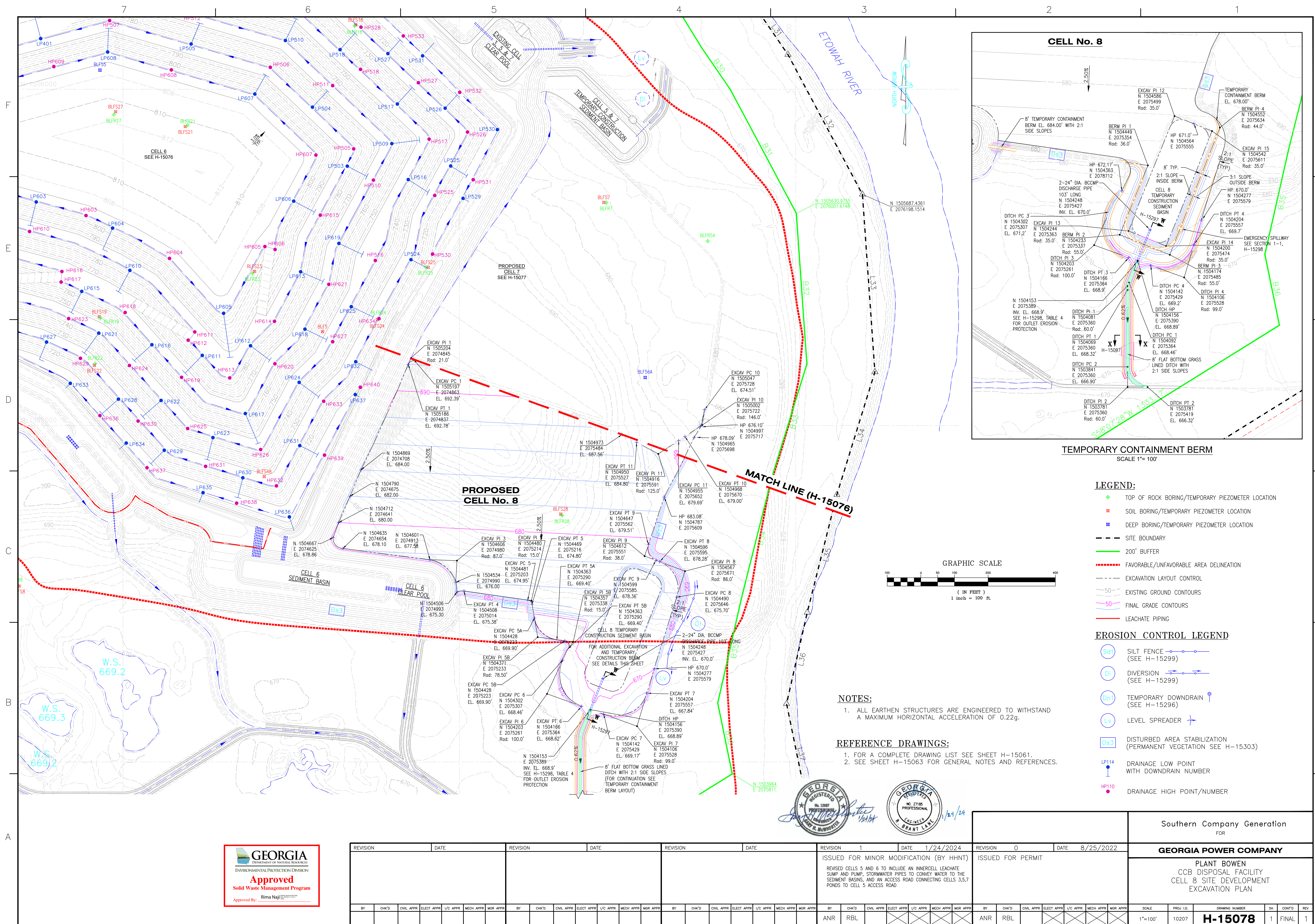
PLANT BOWEN
CCR LANDFILL
CELL 7 SITE DEVELOPMENT
BASE GRADE PLAN

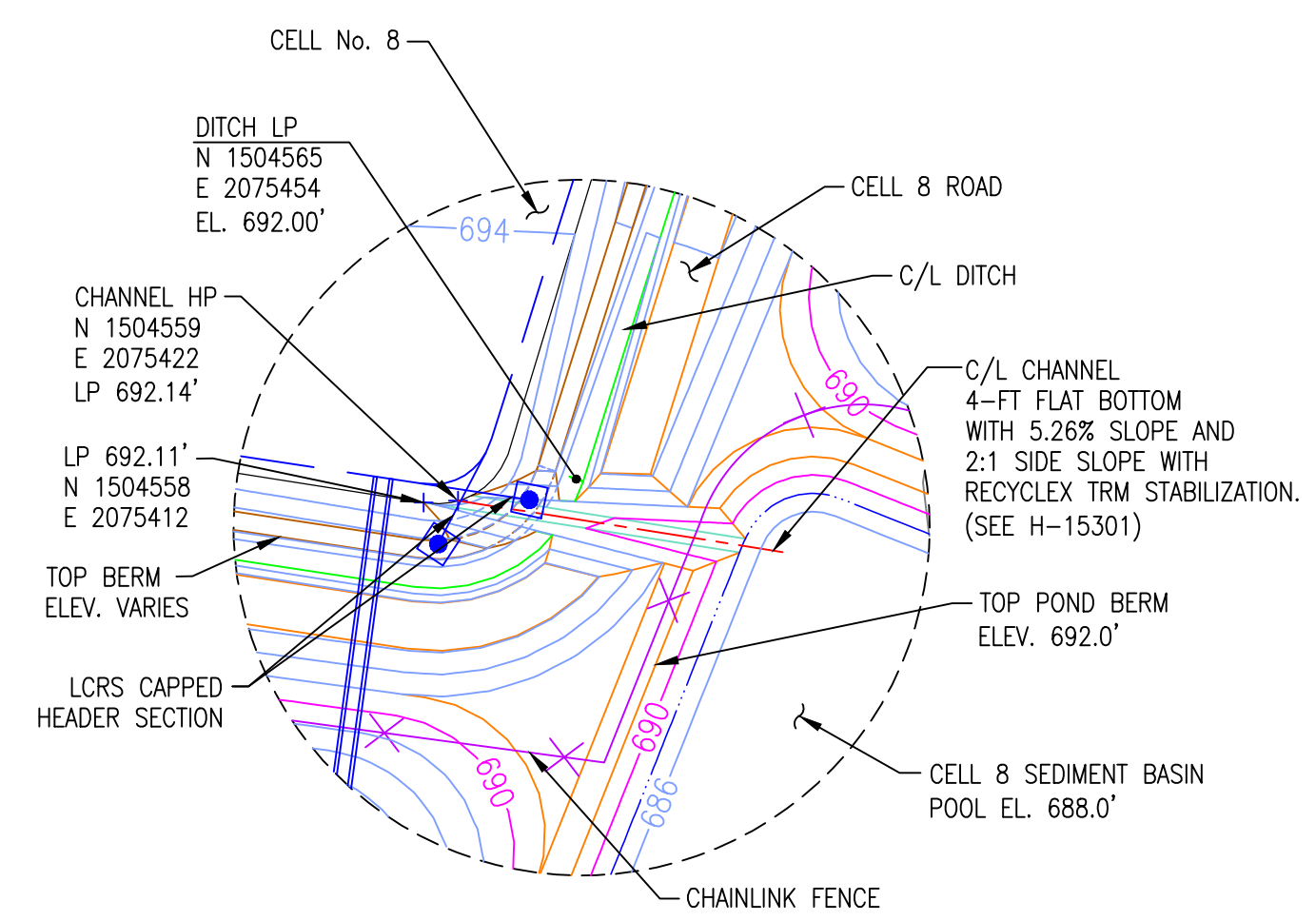
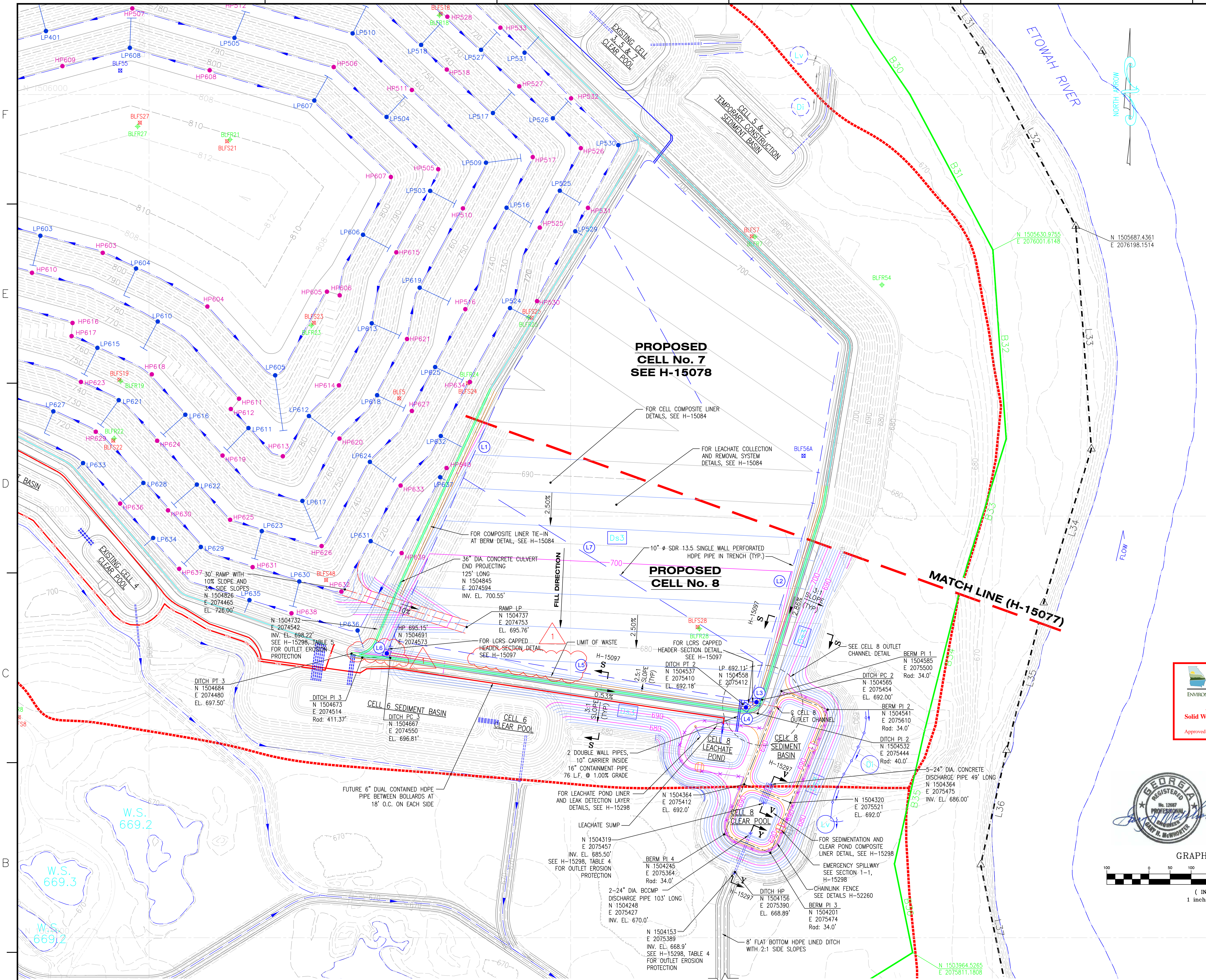
SCALE: 1"=100'

PROJ. I.D.: 10207

DRAWING NUMBER: **H-15077**

SH: 1, CONT'D: 1, REV: 1

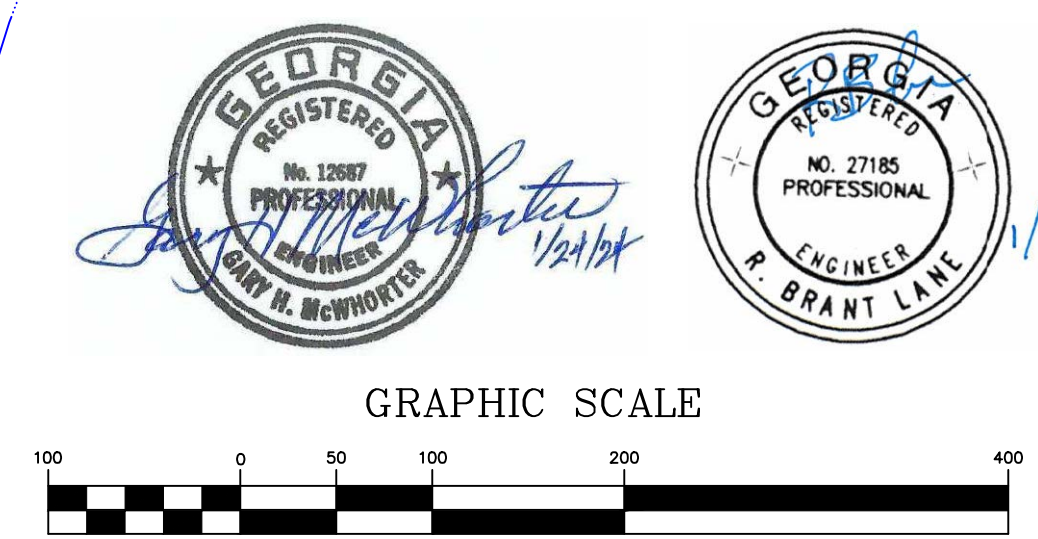




CELL No. 8 OUTLET CHANNEL DETAIL

NOTE: DASHED CONTOURS INDICATE CLOSURE OF OUTLET CHANNEL AS THE CELL IS FILLED.

- LEGEND:**
- TOP OF ROCK BORING/TEMPORARY PIEZOMETER LOCATION
 - SOIL BORING/TEMPORARY PIEZOMETER LOCATION
 - DEEP BORING/TEMPORARY PIEZOMETER LOCATION
 - SITE BOUNDARY
 - 200' BUFFER
 - FAVORABLE/UNFAVORABLE AREA DELINEATION
 - LIMIT OF WASTE
 - FENCE
 - EXISTING GROUND CONTOURS
 - FINAL GRADE CONTOURS
 - LORS PIPES, 10" Ø
 - LEACHATE CLEANOUT
- EROSION CONTROL LEGEND**
- SILT FENCE (SEE H-15299)
 - DIVERSION (SEE H-15299)
 - TEMPORARY DOWNDRAIN (SEE H-15296)
 - LEVEL SPREADER
 - DISTURBED AREA STABILIZATION (PERMANENT VEGETATION SEE H-15303)
 - DRAINAGE LOW POINT WITH DOWNDRAIN NUMBER
 - DRAINAGE HIGH POINT/NUMBER

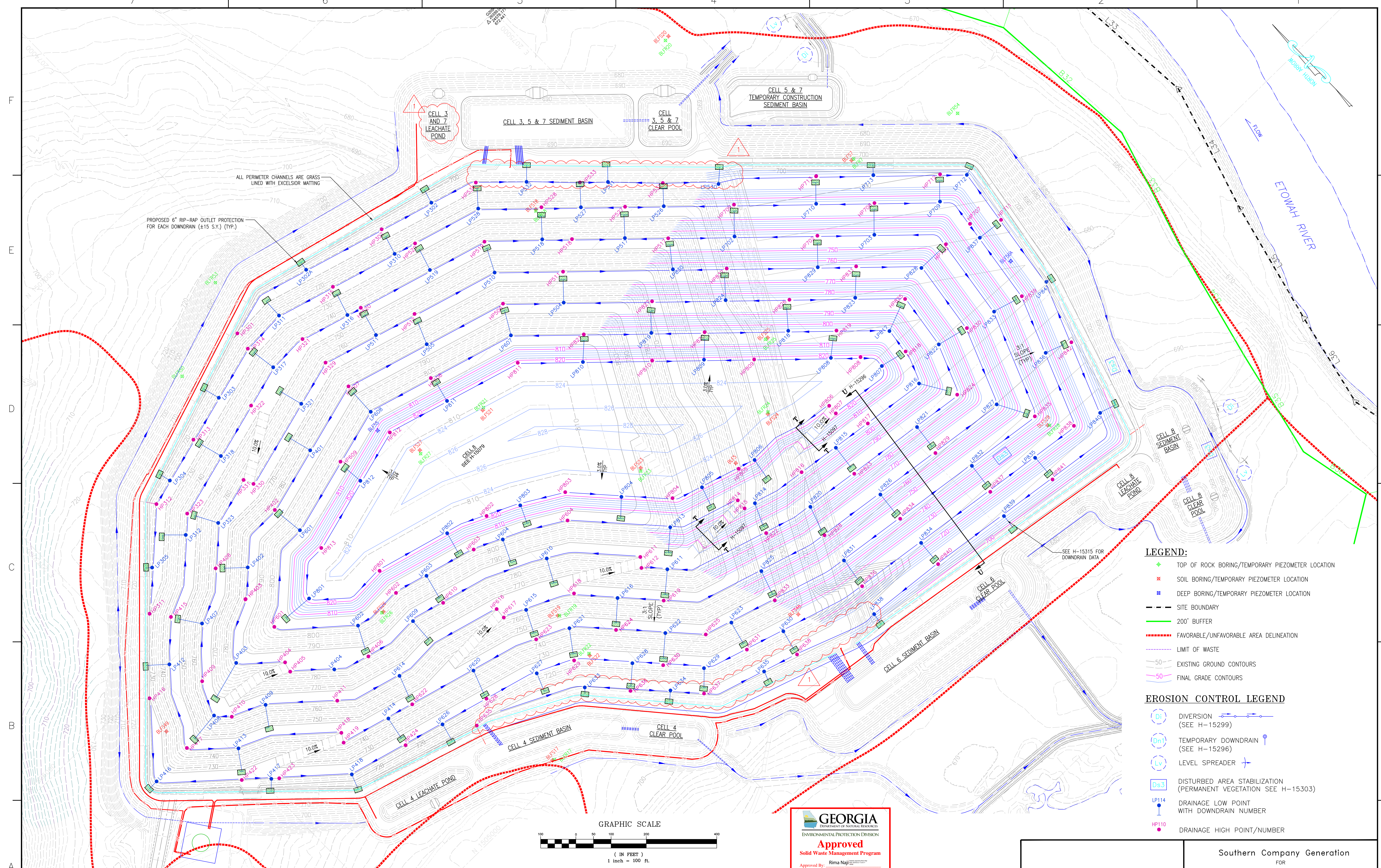


- NOTES:**
- ALL EARTHEN STRUCTURES ARE ENGINEERED TO WITHSTAND A MAXIMUM HORIZONTAL ACCELERATION OF 0.22g.
- REFERENCE DRAWINGS:**
- FOR A COMPLETE DRAWING LIST SEE SHEET H-15061.
 - SEE SHEET H-15063 FOR GENERAL NOTES AND REFERENCES.

CELL 8
LEACHATE COLLECTION SYSTEM DATA

PIPE NO.	PIPE SIZE	
	PERFORATED	SOLID
L1	655' @ 2.33%	-
L2	492' @ 2.42%	-
L3	-	32'
L4	-	34'
L5	653' @ 0.30%	-
L6	-	51'
L7	834' @ 1.21%	-

REVISION		DATE		REVISION		DATE		REVISION		DATE		REVISION		DATE		REVISION		DATE		GEORGIA POWER COMPANY								
								ISSUED FOR MINOR MODIFICATION (BY HHNT) REVISED CELLS 5 AND 6 TO INCLUDE AN INNERCELL LEACHATE SUMP AND PUMP, STORMWATER PIPES TO CONVEY WATER TO THE SEDIMENT BASINS, AND AN ACCESS ROAD CONNECTING CELLS 3,5,7 PONDS TO CELL 5 ACCESS ROAD				ISSUED FOR PERMIT								PLANT BOWEN CCR LANDFILL CELL 8 SITE DEVELOPMENT BASE GRADE PLAN								
BY	CHK'D	CIVL APPR	ELECT APPR	I/C APPR	MECH APPR	MGR APPR	BY	CHK'D	CIVL APPR	ELECT APPR	I/C APPR	MECH APPR	MGR APPR	BY	CHK'D	CIVL APPR	ELECT APPR	I/C APPR	MECH APPR	MGR APPR	SCALE	PROJ I.D.	DRAWING NUMBER		SH	CONTD	REV	
																						1"=100'	10207	H-15079		1	FINAL	1



F
E
D
C
B
A

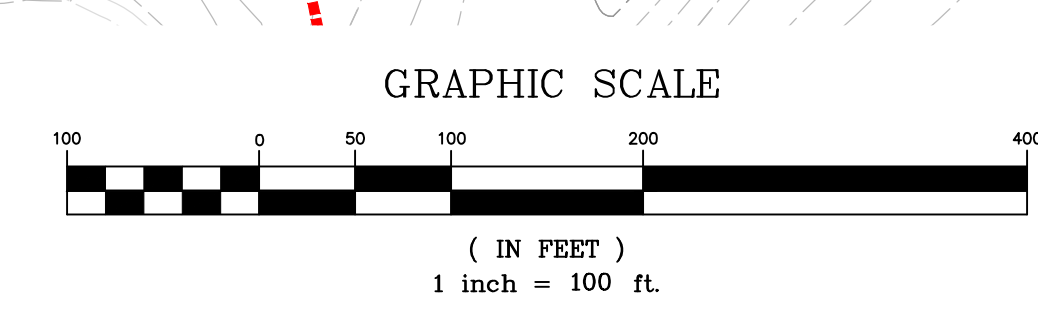
F
E
D
C
B
A

A

A

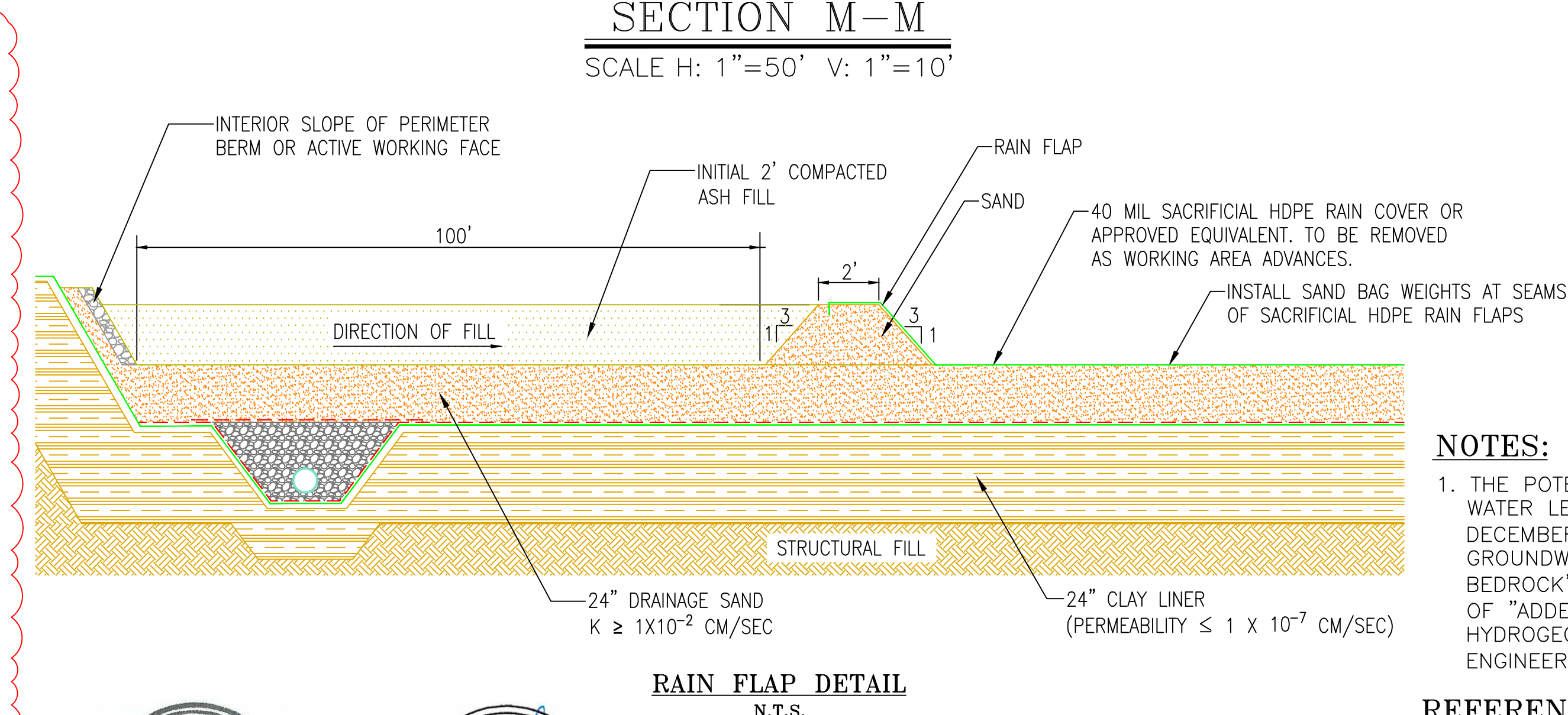
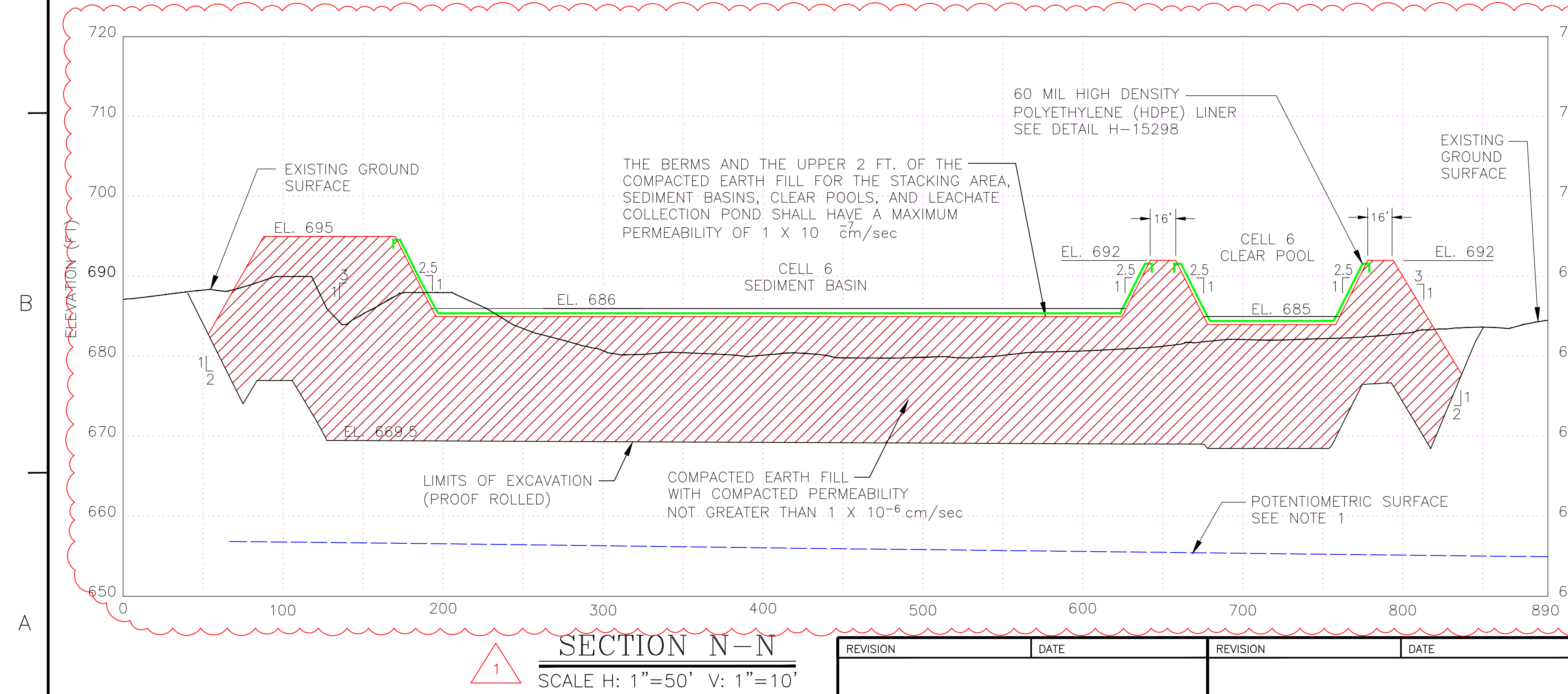
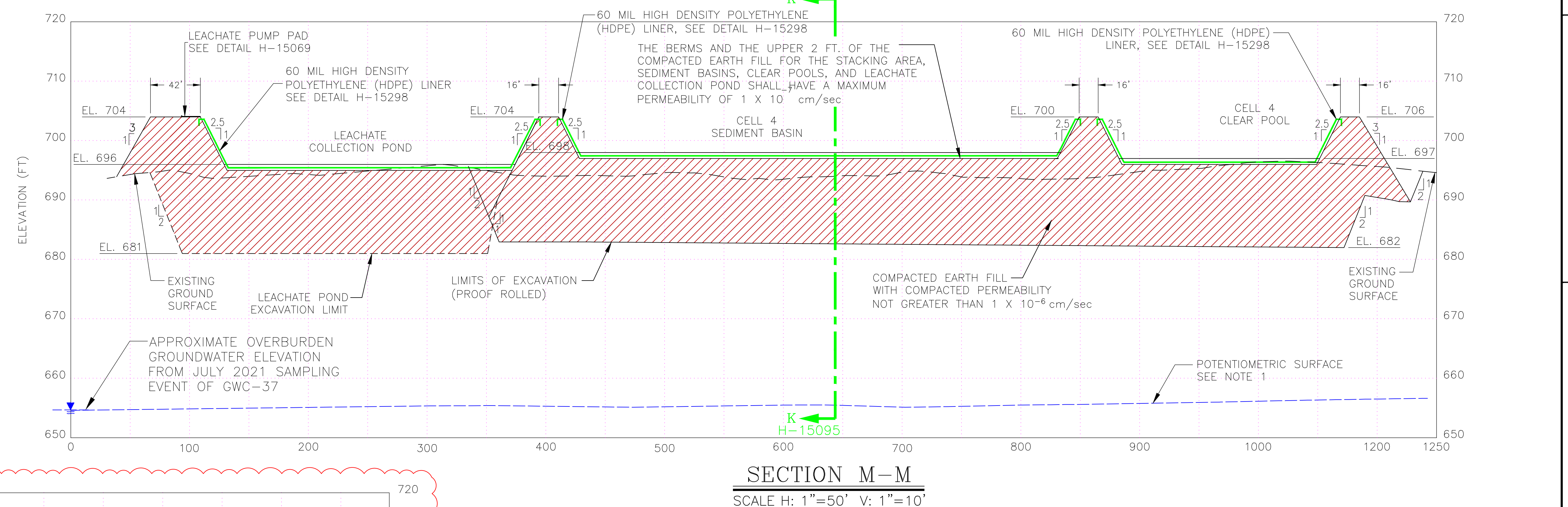
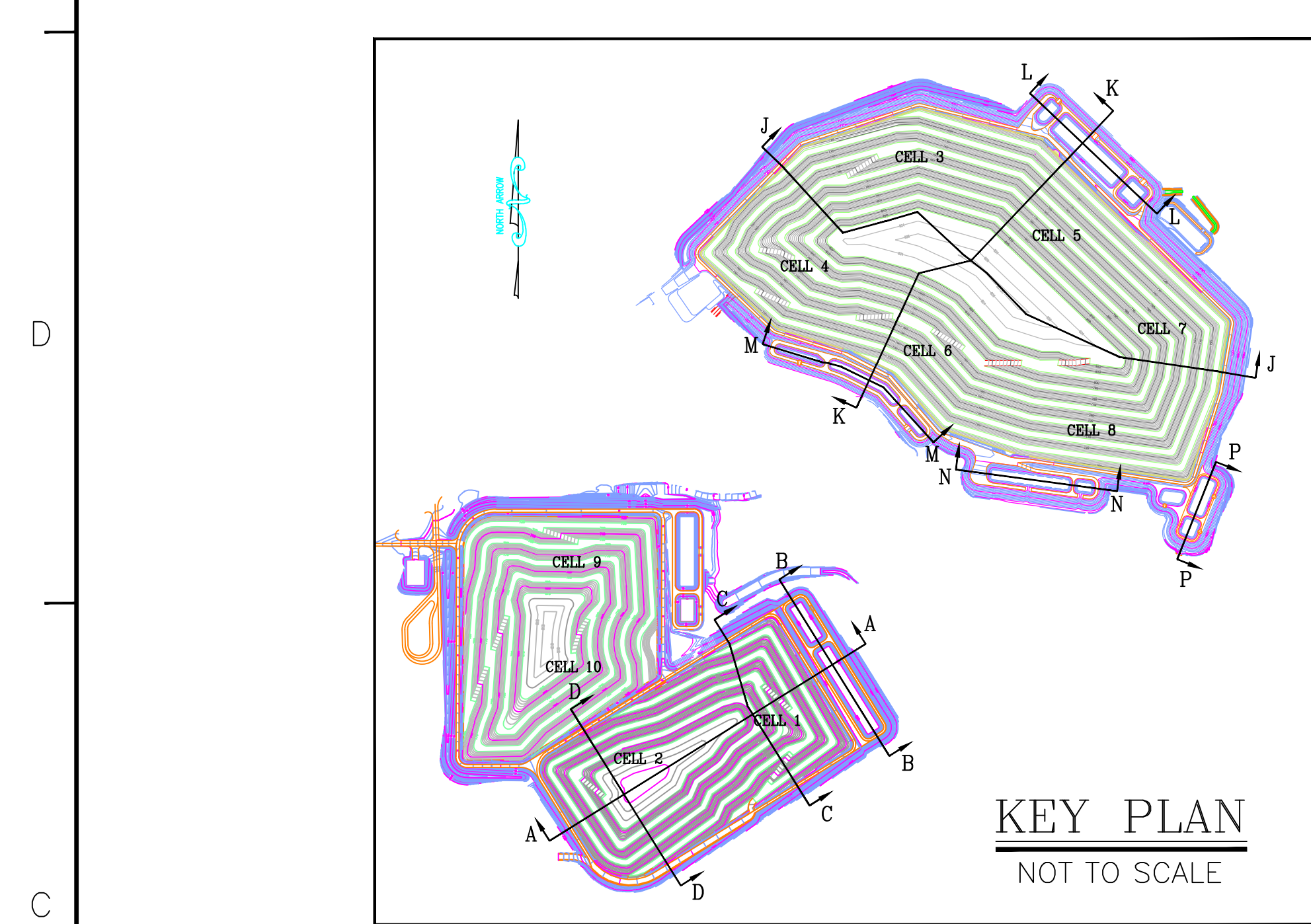
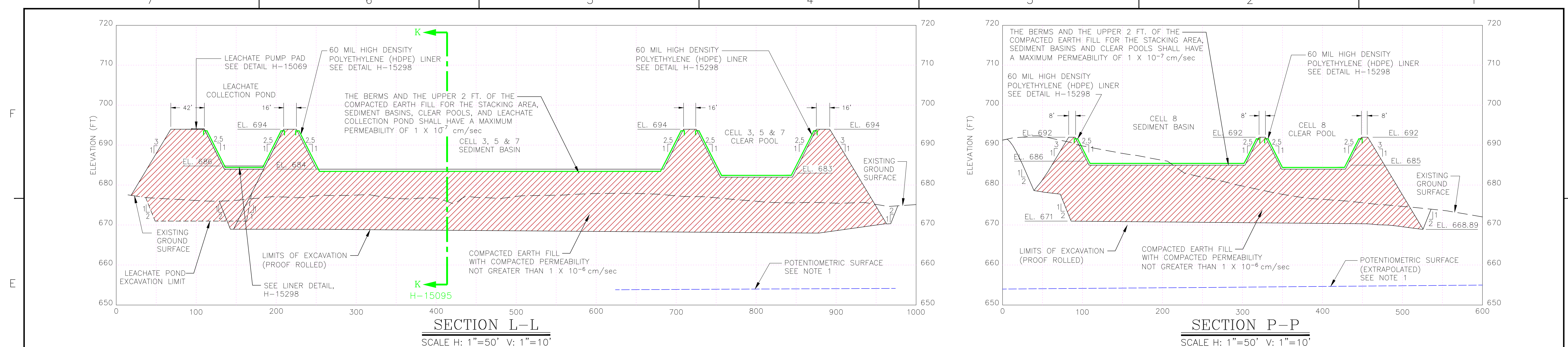


NOTES:
1. ALL EARTHEN STRUCTURES ARE ENGINEERED TO WITHSTAND A MAXIMUM HORIZONTAL ACCELERATION OF 0.22g.
REFERENCE DRAWINGS:
1. FOR A COMPLETE DRAWING LIST SEE SHEET H-15061.
2. SEE SHEET H-15063 FOR GENERAL NOTES AND REFERENCES.
3. SEE SHEET H-15315 FOR DOWNDRAIN DATA.



- LEGEND:**
- TOP OF ROCK BORING/TEMPORARY PIEZOMETER LOCATION
 - SOIL BORING/TEMPORARY PIEZOMETER LOCATION
 - DEEP BORING/TEMPORARY PIEZOMETER LOCATION
 - SITE BOUNDARY
 - 200' BUFFER
 - FAVORABLE/UNFAVORABLE AREA DELINEATION
 - LIMIT OF WASTE
 - EXISTING GROUND CONTOURS
 - FINAL GRADE CONTOURS
- EROSION CONTROL LEGEND**
- D1 DIVERSION (SEE H-15299)
 - Dn1 TEMPORARY DOWNDRAIN (SEE H-15296)
 - Lv LEVEL SPREADER
 - Ds3 DISTURBED AREA STABILIZATION (PERMANENT VEGETATION SEE H-15303)
 - LP114 DRAINAGE LOW POINT WITH DOWNDRAIN NUMBER
 - HP110 DRAINAGE HIGH POINT/NUMBER

REVISION		DATE	REVISION		DATE	REVISION		DATE	REVISION		DATE	GEORGIA POWER COMPANY															
						ISSUED FOR MINOR MODIFICATION (BY HNHT) REVISED CELLS 5 AND 6 TO INCLUDE AN INNERCELL LEACHATE SUMP AND PUMP, STORMWATER PIPES TO CONVEY WATER TO THE SEDIMENT BASINS, AND AN ACCESS ROAD CONNECTING CELLS 3,5,7 PONDS TO CELL 5 ACCESS ROAD						ISSUED FOR PERMIT						PLANT BOWEN CCB DISPOSAL FACILITY CELL 3, 4, 5, 6, 7 & 8 FINAL STACKING PLAN									
BY	CHK'D	CIVIL APPR	ELECT APPR	I/C APPR	MECH APPR	MGR APPR	BY	CHK'D	CIVIL APPR	ELECT APPR	I/C APPR	MECH APPR	MGR APPR	BY	CHK'D	CIVIL APPR	ELECT APPR	I/C APPR	MECH APPR	MGR APPR	SCALE	PROJ. I.D.	DRAWING NUMBER		SH	CONTD	REV
							ANR	RBL						ANR	RBL						1"=100'	10207	H-15080		1	FINAL	1



NOTES:

1. THE POTENTIOMETRIC SURFACE WAS TAKEN FROM THE WATER LEVEL ELEVATIONS SHOWN FOR THE DATE OF DECEMBER 18, 2002 IN PELA, INC.'S "TABLE 3-1; GROUNDWATER LEVELS AND TOP OF UNWEATHERED BEDROCK", DATED JANUARY 6, 2004, PROVIDED AS PART OF "ADDENDUM I, SITE ACCEPTABILITY REPORT, HYDROGEOLOGICAL ASSESSMENT AND DEMONSTRATION OF ENGINEERING MEASURES", DATED JULY 2004.

REFERENCE DRAWINGS:

1. FOR A COMPLETE DRAWING LIST SEE SHEET H-15061.
2. SEE SHEET H-15063 FOR GENERAL NOTES AND REFERENCES.

REVISION		DATE		REVISION		DATE		REVISION		DATE		REVISION		DATE		REVISION		DATE		GEORGIA POWER COMPANY																					
												ISSUED FOR MINOR MODIFICATION (BY HHNT) REVISED CELLS 5 AND 6 TO INCLUDE AN INNERCELL LEACHATE SUMP AND PUMP, STORMWATER PIPES TO CONVEY WATER TO THE SEDIMENT BASINS, AND AN ACCESS ROAD CONNECTING CELLS 3,5,7 PONDS TO CELL 5 ACCESS ROAD				ISSUED FOR PERMIT				PLANT BOWEN CCB DISPOSAL FACILITY SECTIONS L-L, M-M, N-N & P-P																					
BY	CHK'D	CIVIL APPR	ELECT APPR	I/C APPR	MECH APPR	MGR APPR	BY	CHK'D	CIVIL APPR	ELECT APPR	I/C APPR	MECH APPR	MGR APPR	BY	CHK'D	CIVIL APPR	ELECT APPR	I/C APPR	MECH APPR	MGR APPR	BY	CHK'D	CIVIL APPR	ELECT APPR	I/C APPR	MECH APPR	MGR APPR	BY	CHK'D	CIVIL APPR	ELECT APPR	I/C APPR	MECH APPR	MGR APPR	SCALE	PROJ I.D.	DRAWING NUMBER		SH	CONT'D	REV
															ANR	RBL												ANR	RBL						AS SHOWN	10207	H-15096		1	FINAL	1

CELL 1			
Drain #	Northing	Easting	Inlet Elev.
LP101	1502657	2072978	723.2
LP102	1503561	2073248	723.1
LP103	1503107	2073503	722.6
LP104	1502902	2073234	723.0
LP105	1502711	2072987	722.0
LP106	1503387	2072589	742.3
LP107	1503614	2073104	743.1
LP108	1503344	2073270	742.9
LP109	1503093	2073344	743.6
LP110	1502857	2073020	742.6
LP111	1503449	2072952	762.8
LP112	1503169	2073246	762.7
LP113	1502957	2072982	763.2
LP114	1503264	2072773	782.8
LP115	1503282	2073063	783.6
LP116	1503264	2072773	783.4
LP117	1503282	2073063	803.0
LP118	1503205	2072985	803.5
LP119	1503051	2072827	803.4
High Points	Northing	Easting	Elev
HP101	1503558	2072788	724.0
HP102	1503734	2073141	724.0
HP103	1503380	2073353	724.0
HP104	1503020	2073396	724.0
HP105	1502787	2073076	724.0
HP106	1503355	2072528	744.0
HP107	1503536	2072930	744.0
HP108	1503491	2073185	744.0
HP109	1503133	2073385	744.0
HP110	1503040	2073271	744.0
HP111	1503061	2073249	744.0
HP112	1503355	2072722	764.0
HP113	1503430	2073120	764.0
HP114	1503411	2073098	764.0
HP115	1503025	2073046	764.0
HP116	1503366	2073008	784.0
HP117	1503190	2073108	784.0
HP118	1502990	2072894	784.0
HP119	1503148	2072777	804.0
HP120	1503243	2072982	804.0
HP121	1503132	2072887	804.0

CELL 2			
Drain #	Northing	Easting	Inlet Elev.
LP201	1503307	2072437	742.3
LP202	1503536	2072630	742.1
LP203	1503703	2072859	743.4
LP204	1503266	2072553	763.1
LP205	1503146	2072322	762.8
LP206	1502968	2071946	762.9
LP207	1502570	2072195	762.9
LP208	1502532	2072471	763.5
LP209	1502697	2072699	763.3
LP210	1503123	2072473	782.8
LP211	1502978	2072129	783.5
LP212	1502815	2072139	783.5
LP213	1502574	2072363	783.0
LP214	1502678	2072519	783.3
LP215	1502888	2072757	783.1
LP216	1503094	2072673	803.2
LP217	1502927	2072292	802.8
LP218	1502760	2072285	803.6
LP219	1502703	2072400	802.6
High Point	Northing	Easting	Elev
HP201	1503138	2072112	744.0
HP202	1503202	2072429	764.0
HP202A	1502470	2072192	744.0
HP203	1503625	2072752	744.0
HP204	1502758	2071884	744.0
HP205	1502057	2072087	764.0
HP206	1502764	2072066	764.0
HP207	1502484	2072375	764.0
HP208	1502605	2072571	764.0
HP209	1502799	2072803	764.0
HP210	1503152	2072529	784.0
HP210A	1503131	2072550	784.0
HP211	1502241	2073002	784.0
HP212	1502891	2072089	784.0
HP213	1502716	2072205	784.0
HP214	1502631	2072454	784.0
HP215	1503769	2072644	784.0
HP216	1503045	2072519	804.0
HP217	1502678	2072348	804.0
HP218	1502897	2072618	804.0
HP219	1502878	2072641	804.0
HP220	1502973	2072192	804.0

CELL 3			
Drain #	Northing	Easting	Inlet Elev.
LP301 (T)	1506124	2074344	709.2
LP301A (T)	1506283	2074509	709.4
LP302	1506412	2074492	709.2
LP302A	1506525	2074107	708.5
LP303	1506439	2073675	725.2
LP304	1506368	2073411	725.3
LP305	1506226	2073202	725.1
LP308 (T)	1505802	2073937	725.3
LP308A (T)	1505968	2074111	725.5
LP309 (T)	1506129	2074236	725.5
LP309A (T)	1506265	2074378	725.3
LP310	1506381	2074317	725.0
LP311	1506486	2073961	725.1
LP312	1506226	2073335	745.0
LP315 (T)	1505952	2073920	744.8
LP316	1506352	2074100	745.2
LP317	1506392	2073845	745.4
LP318	1506317	2073564	745.1
LP319 (T)	1506229	2074211	745.2
LP320 (T)	1506250	2074080	765.4
LP321	1506263	2073830	764.7
LP323	1506186	2073425	765.3
LP324 (T)	1506084	2073928	765.2
High Point	Northing	Easting	Elev
HP301	1506529	2073825	710.0
HP302	1506457	2074339	710.0
HP303 (T)	1506373	2074582	710.0
HP304 (T)	1506209	2074432	710.0
HP305 (T)	1506010	2074227	710.0
HP306 (T)	1505901	2074041	726.0
HP311	1506138	2073105	726.0
HP312	1506347	2073337	726.0
HP313	1506404	2073543	726.0
HP314	1506481	2073831	726.0
HP315	1506437	2074127	726.0
HP316 (T)	1506336	2074429	726.0
HP317 (T)	1506162	2074271	726.0
HP318 (T)	1506041	2074188	726.0
HP319 (T)	1506100	2074119	746.0
HP320 (T)	1506290	2074255	746.0
HP321	1506392	2073961	746.0
HP322	1506360	2073725	746.0
HP323	1506266	2073382	746.0
HP327 (T)	1506118	2074095	746.0
HP328 (T)	1506179	2074025	766.0
HP329	1506298	2073961	766.0
HP330	1506195	2073574	766.0
HP331	1506222	2073562	766.0

CELL 4			
Drain #	Northing	Easting	Inlet Elev.
LP401	1506151	2073756	785.0
LP402	1506037	2073396	785.0
LP403	1505866	2073183	785.1
LP404	1505658	2073370	785.3
LP405 (T)	1505776	2073520	785.1
LP406 (T)	1505609	2073718	785.1
LP407	1506014	2073192	765.2
LP408	1505803	2073034	765.5
LP409	1505723	2073160	765.0
LP410 (T)	1505535	2073445	744.8
LP411 (T)	1505870	2073704	745.1
LP412	1505996	2073045	744.8
LP413	1505689	2073018	744.5
LP414	1505451	2073381	744.8
LP415 (T)	1505584	2073639	744.6
LP416	1505783	2072787	724.8
LP417	1505561	2073025	725.6
LP418	1505410	2073197	725.0
LP419 (T)	1505345	2073569	724.9
LP420 (T)	1505657	2073807	725.2
High Point	Northing	Easting	Elev
HP401 (T)	1506144	2073837	786.0
HP402	1506100	2073565	786.0
HP403	1505937	2073243	786.0
HP404	1505771	2073282	786.0
HP405	1505742	2073275	786.0
HP406	1505639	2073409	786.0
HP407 (T)	1505880	2073599	786.0
HP408	1506099	2073329	766.0
HP409	1505896	2073079	766.0
HP410	1505765	2073067	766.0
HP411	1505588	2073313	766.0
HP412 (T)	1505716	2073590	766.0
HP413 (T)	1505701	2073617	766.0
HP414 (T)	1505942	2073779	766.0
HP415	1506089	2073142	746.0
HP416	1505966	2072937	726.0
HP417	1505792	2072914	746.0
HP418	1505516	2073258	746.0
HP419	1505491	2073243	746.0
HP420 (T)	1505496	2073571	746.0
HP421 (T)	1505820	2073781	746.0
HP422	1505617	2073962	726.0
HP423	1505546	2073042	726.0
HP424	1505363	2073364	726.0
HP425 (T)	1505527	2073710	726.0
HP426 (T)	1505744	2073873	726.0

CELL 5			
Drain #	Northing	Easting	Inlet Elev.
LP503 (T)	1505771	2074664	785.2
LP504	1505946	2074563	785.1
LP505	1506135	2074202	784.7
LP508	1505618	2074677	764.9
LP509 (T)	1505838	2074799	764.8
LP510	1506146	2074483	764.7
LP511	1506254	2074118	765.2
LP516 (T)	1505731	2074848	744.7
LP517	1505956	2074816	745.2
LP518	1506117	2074645	745.2
LP519	1506277	2074356	744.9
LP524 (T)	1505494	2074857	725.0
LP525 (T)	1505772	2074974	725.4
LP526	1505944	2074958	725.4
LP527	1506106	2074788	725.4
LP528	1506366	2074575	725.0
LP529 (T)	1505675	2075011	709.1
LP530	1505899	2075116	709.1
LP531	1506104	2074893	709.2
LP532	1506266	2074728	709.2
High Point	Northing	Easting	Elev
HP505 (T)	1505823	2074683	786.0
HP506	1506065	2074438	786.0
HP507	1506204	2073960	786.0
HP510 (T)	1505730	2074745	766.0
HP511	1506011	2074623	766.0
HP512	1506220	2074238	766.0
HP516 (T)	1505491	2074748	746.0
HP517	1505852	2074910	746.0
HP518	1506059	2074706	746.0
HP519	1506228	2074523	746.0
HP520	1506339	2074141	746.0
HP525 (T)	1505684	2074927	726.0
HP526 (T)	1505873	2075024	726.0
HP527	1506022	2074876	726.0
HP528	1506183	2074705	726.0
HP529	1506363	2074387	726.0
HP530 (T)	1505514	2074920	710.0
HP531 (T)	1505731	2075041	710.0
HP532	1505992	2075002	710.0
HP533	1506158	2074834	710.0
HP534	1506365	2074623	710.0

CELL 6			
Drain #	Northing	Easting	Inlet Elev.
LP601	1506008	2073576	804.5
LP602	1505699	2073503	804.8
LP603	1505664	2073742	805.2
LP604	1505587	2073969	805.0
LP605 (T)	1505334	2074297	804.9
LP606	1505667	2074505	805.3
LP607 (T)	1505985	2074392	804.7
LP608	1506110	2073954	805.0
LP609	1505600	2073624	785.2
LP610	1505462	2074021	784.4
LP611	1505209	2074236	785.5
LP612 (T)	1505237	2074377	785.5
LP613 (T)	1505457	2074526	785.1
LP614	1505515	2073489	764.3
LP615	1505399	2073878	765.3
LP616	1505240	2074086	765.3
LP617 (T)	1505036	2074361	764.9
LP618 (T)	1505587	2073969	765.3
LP619 (T)	1505542	2074642	764.9
LP620	1505380	2073650	745.0
LP621	1505275	2073928	745.3
LP622	1505075	2074113	745.3
LP623	1504964	2074267	745.3
LP624 (T)	1505128	2074521	744.9
LP625 (T)	1505353	2074676	745.3
LP626	1505332	2073480	725.3
LP627	1505248	2073773	725.2
LP628	1505079	2073987	725.2
LP629	1504927	2074123	725.3
LP630	1504845	2074356	725.4
LP631 (T)	1504940	2074523	725.3
LP632 (T)	1505190	2074689	725.3
LP633	1505124	2073842	704.4
LP634	1504948	2074010	705.4
LP635	1504800	2074237	705.1
LP636 (T)	1504731	2074494	705.0
LP637 (T)	1505092	2074688	705.0
High Point	Northing	Easting	Elev.
HP601	1505864	2073332	806.0
HP602	1505691	2073646	806.0
HP603	1505625	2073890	806.0
HP604	1505497	2074138	806.0
HP605 (T)	1505533	2074419	806.0
HP606 (T)	1505524	2074450	806.0
HP607 (T)	1505805	2074571	806.0
HP608	1506057	2074144	806.0
HP609	1506067	2073795	806.0
HP610	1505577	2073722	786.0
HP611	1505278	2074213	786.0
HP612	1505254	2074194	786.0
HP613 (T)	1505142	2074315	786.0
HP614 (T)	1505310	2074448	786.0
HP615 (T)	1505626	2074584	786.0
HP616	1505458	2073814	766.0
HP617	1505427	2073816	766.0
HP618	1505336	2074007	766.0
HP619	1505144	2074174	766.0
HP620 (T)	1505183	2074449	766.0
HP621 (T)	1505420	2074609	766.0
HP622	1505433	2073458	746.0
HP623	1505318	2073839	746.0
HP624	1505179	2074019	746.0
HP625	1504991	2074192	746.0
HP626 (T)	1504929	2074407	746.0
HP627 (T)	1505249	2074621	746.0
HP628	1505296	2073620	726.0
HP629	1505200	2073874	726.0
HP630	1505014	2074045	726.0
HP631	1504879	2074246	726.0
HP632 (T)	1504821	2074454	726.0
HP633 (T)	1505072	2074584	726.0
HP634 (T)	1505318	2074759	726.0
HP635	1505261	2073552	710.0
HP636	1505027	2073928	710.0
HP637	1504875	2074071	710.0
HP638	1504770	2074338	710.0
HP639 (T)	1504914	2074593	710.0
HP640 (T)	1505114	2074703	710.0