

DRAWING INDEX:

- H1C11000 REV1 Title Sheet and Drawing Index
- H1C11001 REV0 Permitted Site Boundary, Plat and Legal Description
- H1C11002 REV0 Site Topographic Survey
- H1C11003 REV0 Wetland Boundaries, 100 Year Flood Plain, Stream Buffers And Boring Locations
- H1C11004 REV0 General Site Development, Cell Layout
- H1C11005 REV0 Cell No. 1 Site Development Base Grading Plan
- H1C11005A REV0 North Sedimentation Pond Double Liner System Completion
- H1C11005B REV0 North Sedimentation Pond Miscellaneous Sections
- H1C11006 REV0 Cell No. 1 - Final Stacking Plan
- H1C11007 REV0 Cell No. 2 - Site Development - Base Grading Plan
- H1C11008 REV0 Cell No. 1 and Cell No. 2 - Final Stacking Plan
- H1C11011 REV0 Cell 1 - Section A-A and Section B-B Perimeter Dike Through Final Stack
- H1C11012 REV0 Cell 2 - Section C-C and Section D-D Perimeter Dike Through Final Stack
- H1C11014 REV0 Cell No. 1 and Cell No. 2 Miscellaneous Sections
- H1C11015 REV0 Cell No. 1 and Cell No. 2 Miscellaneous Sections
- H1C11015A REV0 Cell No. 1 and Cell No. 2 Miscellaneous Sections
- H1C11016 REV0 Cell No. 1 and Cell No. 2 Miscellaneous Sections
- H1C11017 REV0 Cell No. 1 and Cell No. 2 Miscellaneous Sections
- H1C11018 REV0 Cell No. 1 and Cell No. 2 Miscellaneous Details
- H1C11019 REV0 Cell No. 1 and Cell No. 2 Miscellaneous Details
- H1C11020 REV0 Cell No. 1 Through Cell No. 3 Miscellaneous Details Sheet 3
- H1C11021 REV0 Cell No. 1 and Cell No. 2 Filling and Operations Plan
- H1C11026 REV0 Geologic Sections A-A' and B-B'
- H1C11027 REV0 Potentiometric Surface October 25, 2007
- H1C11028 REV0 Composite Seasonal High Groundwater Map
- H1C11029 REV0 Compliance Network Sheet
- H1C11031 REV0 Cell No. 1 and Cell No. 2 - Siphon Sections and Details
- H1C11032 REV0 Cell No. 1 and Cell No. 2 & PAC/Ash Cell, Erosion Control Sections and Details
- H1C11033 REV0 Cell No. 1 and Cell No. 2 & PAC/Ash Cell, Erosion Control Sections and Details
- H1C11034 REV0 Cell No. 1 and Cell No. 2 & PAC/Ash Cell Miscellaneous Sections and Details
- H1C11035 REV0 Cell No. 1 and Cell No. 2 Miscellaneous Sections and Details
- H1C11036 REV0 Cell No. 1 and Cell No. 2 Flume Data Sheet
- H1C11037 REV0 Cell No. 1 and Cell No. 2 Leachate Collection and Removal System Layout
- H1C11038 REV0 Leachate Collection and Removal System Details
- H1C11041 REV0 Cell No. 1 and Cell No. 2 Clear Pool Return Water Intake Plan & Sections
- H1C11042 REV0 PAC/Ash Cell Site Development, Base Grading Plan
- H1C11043 REV0 PAC/Ash Cell, Final Stacking Plan
- H1C11044 REV0 PAC/Ash Cell, Section A-A and Section B-B
- H1C11045 REV0 PAC/Ash Cell, Flume Data Sheet
- H1C11046 REV0 PAC/Ash Cell, Miscellaneous Sections and Details, Sheet 1
- H1C11047 REV0 PAC/Ash Cell, Miscellaneous Sections and Details, Sheet 2
- H1C11048 REV0 PAC/Ash Cell, Miscellaneous Sections and Details, Sheet 3
- H1C11049 REV0 PAC/Ash Cell, Miscellaneous Sections and Details, Sheet 4
- H1C11050 REV0 PAC/Ash Cell, Miscellaneous Sections and Details, Sheet 5
- H1C11051 REV0 PAC/Ash Cell, Miscellaneous Sections and Details, Sheet 6
- H1C11052 REV0 PAC/Ash Cell, Leachate Collection and Removal System Layout
- H1C11053 REV0 PAC/Ash Cell, Return Water Intake Plan & Sections
- H1C11054 REV0 PAC/Ash Cell, Geologic Sections C-C', D-D' and E-E'
- H1C11055 REV0 CELL 1 RAIN COVER SITE PLAN
- H1C11055A REV0 RAIN COVER SECTIONS AND DETAILS
- H1C11055B REV0 AERATION FOUNTAINS SITE PLAN
- H1C11056 REV0 CELL 3 EXISTING TOPOGRAPHIC CONDITIONS
- H1C11057 REV0 CELL 3 TOP OF SOIL LINER GRADING PLAN
- H1C11058 REV0 CELL 3 LEACHATE COLLECTION / STORMWATER PUMPING PLAN
- H1C11059 REV0 CELL 3 FINAL GRADING PLAN
- H1C11060 REV0 CELL 3 FINAL DRAINAGE AND EROSION CONTROL PLAN
- H1C11061 REV0 CELL 3 CROSS SECTIONS E AND F
- H1C11062 REV0 CELL 3 MISCELLANEOUS DETAILS
- H1C11063 REV0 CELL 3 MISCELLANEOUS DETAILS
- H1C11064 REV0 CELL 3 MISCELLANEOUS DETAILS
- H1C11065 REV0 CELL 3 MISCELLANEOUS DETAILS
- H1C11066 REV0 CELL 3 MISCELLANEOUS DETAILS
- H1C11067 REV0 CELL 3 MISCELLANEOUS DETAILS

GEORGIA POWER COMPANY

PLANT SCHERER

COAL COMBUSTION RESIDUALS (CCR) LANDFILL

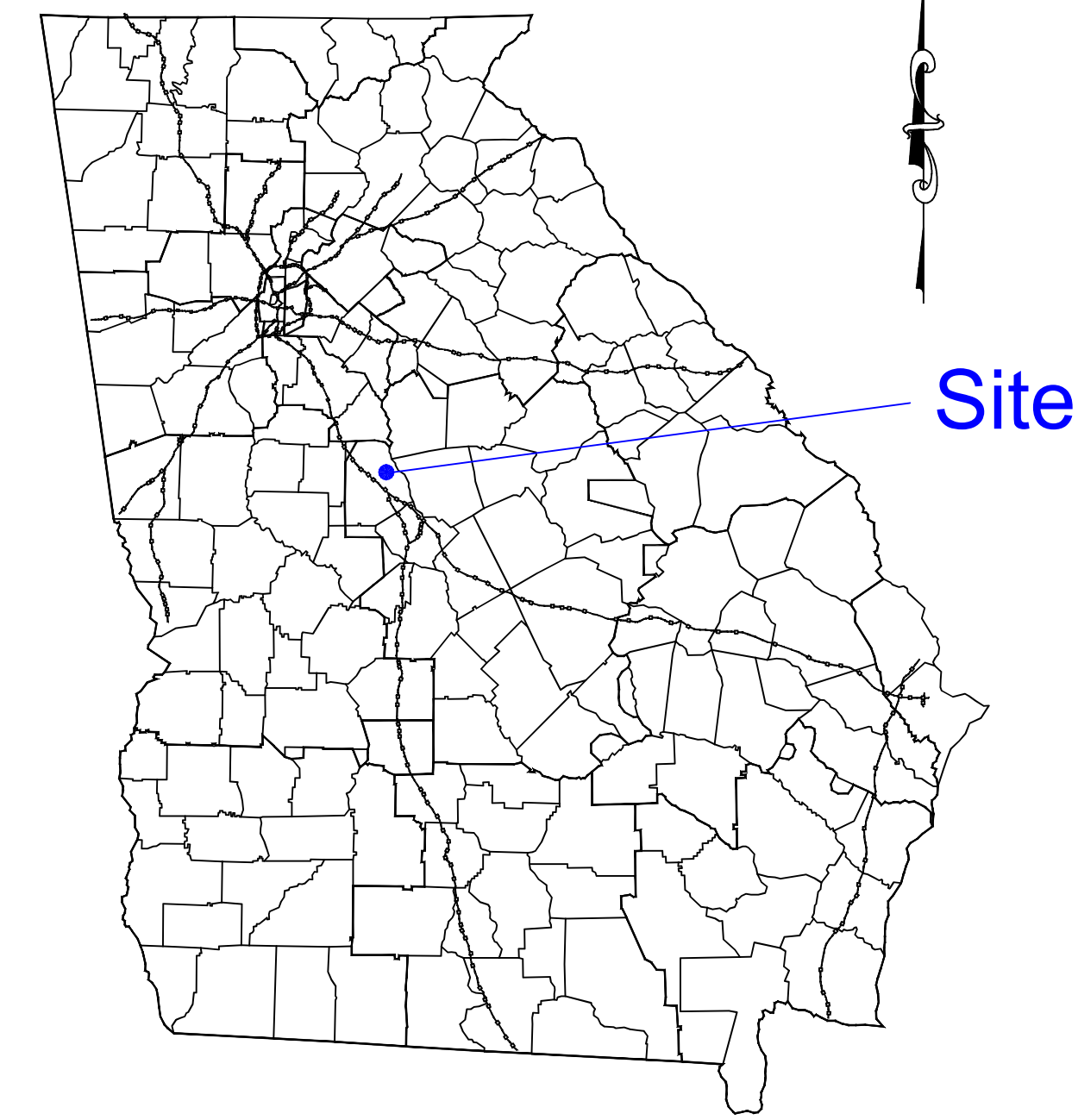
PERMIT DRAWINGS

MONROE COUNTY, GEORGIA

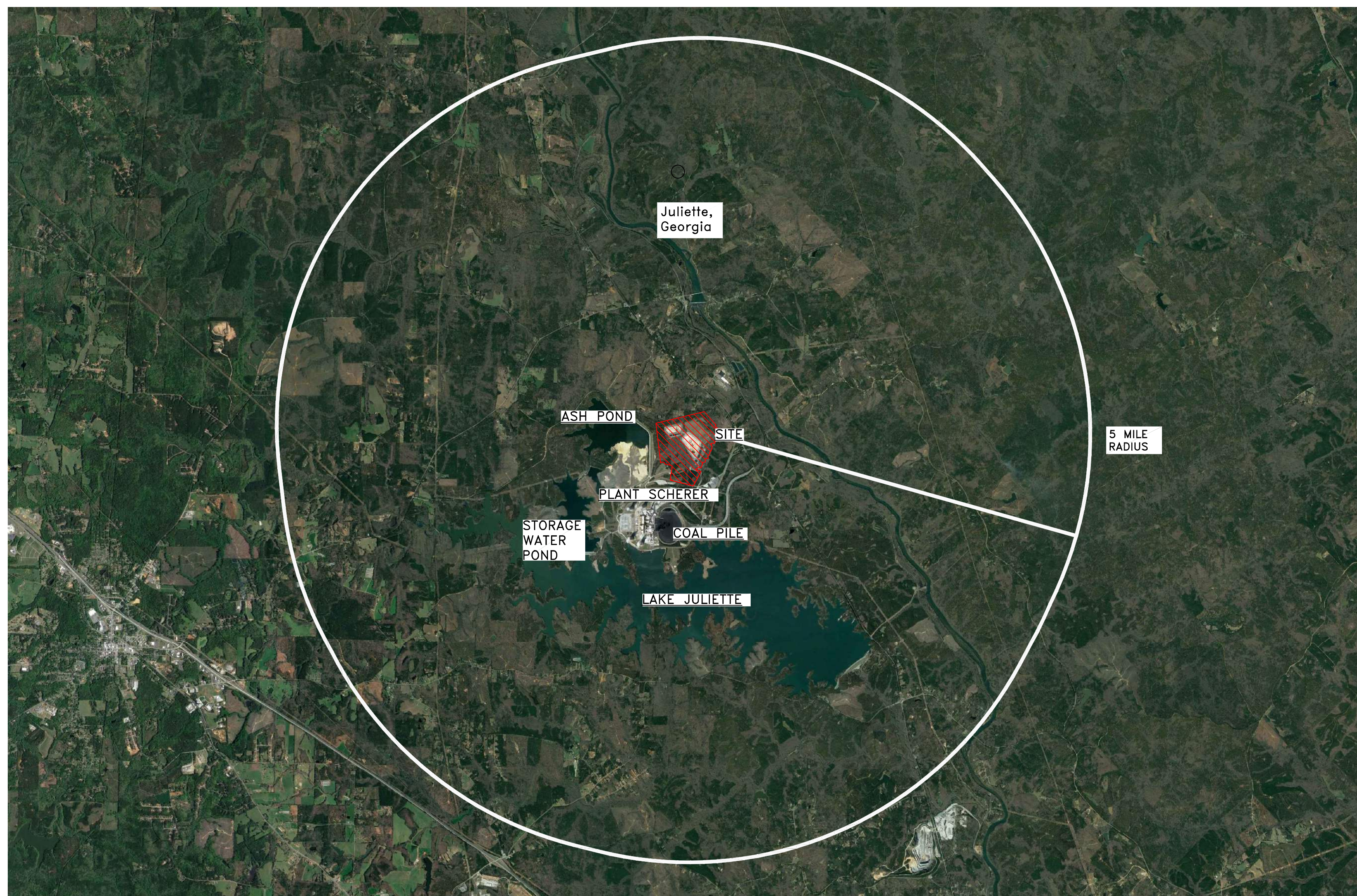
OCTOBER 2022

1 REVISED: FEBRUARY 2024

LOCATION MAP
SCALE AS SHOWN



MONROE COUNTY
GEORGIA



LEGEND:

COAL COMBUSTION RESIDUALS LANDFILL AREA

RESPONSIBLE OFFICIAL	CONSULTANT	ADDRESS
DIRECTOR ENVIRONMENTAL AFFAIRS GEORGIA POWER COMPANY BIN 10221 241 RALPH MCGILL BLVD. ATLANTA, GEORGIA 30308 (404) 506-6505	SOUTHERN COMPANY GENERATION GARY McWHORTER BIN 10160 241 RALPH MCGILL BLVD. ATLANTA, GEORGIA 30308 TEL: (404) 506-7291	PLANT SCHERER 10986 GEORGIA 87 JULIETTE, GA 31046
PROPERTY OWNER	CCR LANDFILL PERMIT APPLICATION CONSULTANT	
GEORGIA POWER COMPANY 241 RALPH MCGILL BLVD. ATLANTA, GEORGIA 30308	HODGES, HARBIN, NEWBERRY & TRIBBLE, INC. [HHNT, INC.] 3920 ARKWRIGHT ROAD, SUITE 101 MACON, GEORGIA 31210 TEL: (478) 743-7175	

NOTES:

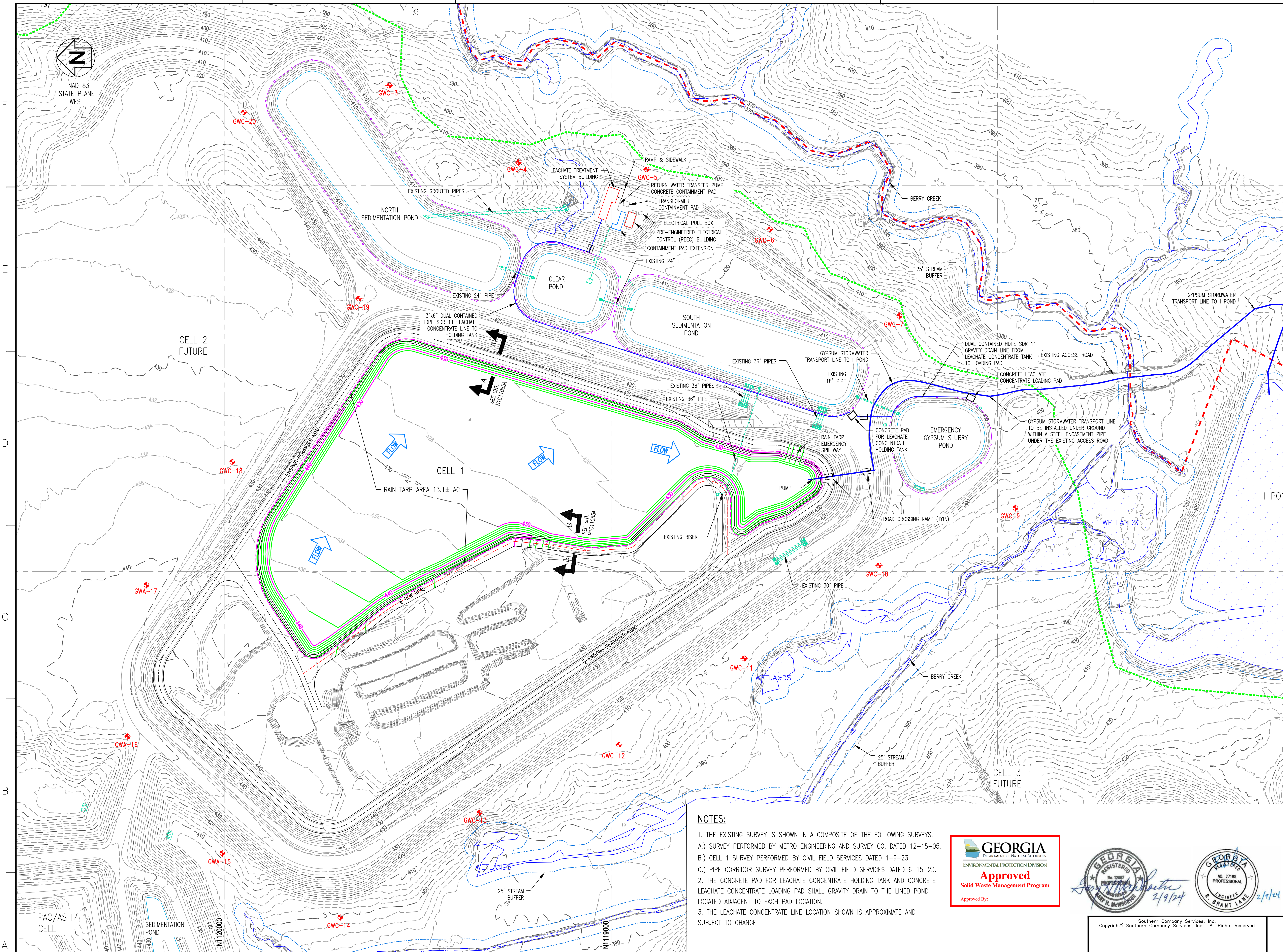
1. COAL COMBUSTION BY-PRODUCTS AND COAL COMBUSTION RESIDUALS SHALL HAVE THE SAME MEANING IN THESE PERMIT DRAWINGS.
2. PERMIT REVISION HISTORY: THE ORIGINAL PERMIT DRAWINGS FOR THE PLANT SCHERER CCR LANDFILL WERE PREPARED BY SOUTHERN COMPANY GENERATION ENGINEERING AND CONSTRUCTION SERVICES (SCGCS). THESE PERMIT DRAWINGS WERE REVIEWED BY GEORGIA EPD AND APPROVED IN SEPTEMBER 2009 AS PART OF THE FACILITY'S SOLID WASTE HANDLING PERMIT WITH SUBSEQUENT REVISIONS TO THE DRAWINGS APPROVED BY GEORGIA EPD THROUGH PERMIT MODIFICATIONS. HODGES, HARBIN, NEWBERRY, AND TRIBBLE INC. (HHNT) HAS ASSISTED GEORGIA POWER COMPANY IN PREPARATION OF THE CCR LANDFILL PERMIT AS REQUIRED BY THE NEW SOLID WASTE RULE 391-4-.10(9)(a) FOR COAL COMBUSTION RESIDUALS UNITS. MINOR PLAN REVISIONS AND UPDATES HAVE BEEN MADE AS PART OF THE NEW CCR LANDFILL PERMITTING PROCESS AND ARE INCLUDED HEREIN. AT THE REQUEST OF GEORGIA EPD AND AS PART OF THE NEW CCR PERMIT PROCESS, ALL PREVIOUS PLAN REVISION NOTES FOR THE FACILITY'S ORIGINAL SOLID WASTE HANDLING PERMIT HAVE BEEN REMOVED.



REVISION		DATE		REVISION		DATE		REVISION		DATE		REVISION		DATE		REVISION		DATE		REVISION		DATE		SCALE		PROJ.ID.		DRAWING NUMBER		SHEET		CONTD.		REV.																			
																								AS SHOWN		010505		H1C11000		1		FINAL		1																			
BY		CHKD		CIVL APPR		ELECT APPR		IC APPR		MECH APPR		DISC MGR		BY		CHKD		CIVL APPR		ELECT APPR		IC APPR		MECH APPR		DISC MGR		BY		CHKD		CIVL APPR		ELECT APPR		IC APPR		MECH APPR		DISC MGR		SCALE		PROJ.ID.		DRAWING NUMBER		SHEET		CONTD.		REV.	
ANR		RBL												ANR		RBL												ANR		RBL																							

Copyright © Southern Company Services, Inc. All Rights Reserved

Southern Company Generation
Engineering and Construction Services
FOR
Georgia Power Company
PLANT SCHERER
COAL COMBUSTION RESIDUALS (CCR) LANDFILL
TITLE SHEET AND DRAWING INDEX



LEGEND:

- 720 --- EXISTING CONTOURS (MAJOR)
- 718 --- EXISTING CONTOURS (MINOR)
- 720 --- PROPOSED CONTOURS (MAJOR)
- 718 --- PROPOSED CONTOURS (MINOR)
- - - - - SITE BOUNDARY
- 200' --- 200' BUFFER
- 25' --- 25' STREAM AND WETLAND BUFFER
- WETLANDS
- - - - - EXISTING FENCE
- GWC-20 EXISTING MONITORING WELL

REFERENCES:
H1C11055A: RAIN COVER SECTIONS AND DETAILS

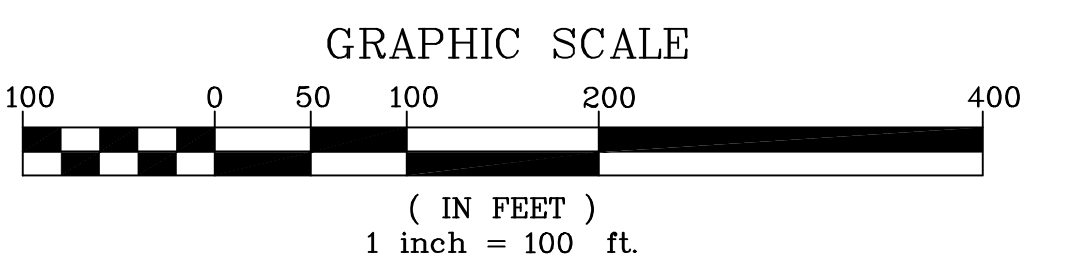
NOTES:

1. THE EXISTING SURVEY IS SHOWN IN A COMPOSITE OF THE FOLLOWING SURVEYS.
A.) SURVEY PERFORMED BY METRO ENGINEERING AND SURVEY CO. DATED 12-15-05.
B.) CELL 1 SURVEY PERFORMED BY CIVIL FIELD SERVICES DATED 1-9-23.
C.) PIPE CORRIDOR SURVEY PERFORMED BY CIVIL FIELD SERVICES DATED 6-15-23.
2. THE CONCRETE PAD FOR LEACHATE CONCENTRATE HOLDING TANK AND CONCRETE LEACHATE CONCENTRATE LOADING PAD SHALL GRAVITY DRAIN TO THE LINED POND LOCATED ADJACENT TO EACH PAD LOCATION.
3. THE LEACHATE CONCENTRATE LINE LOCATION SHOWN IS APPROXIMATE AND SUBJECT TO CHANGE.

GEORGIA
DEPARTMENT OF NATURAL RESOURCES
ENVIRONMENTAL PROTECTION DIVISION
Approved
Solid Waste Management Program

REGISTERED PROFESSIONAL ENGINEER
NO. 27185
P. GRANT LINK
2/11/24

REGISTERED PROFESSIONAL ENGINEER
NO. 27185
M. MCWHORTER
2/9/24



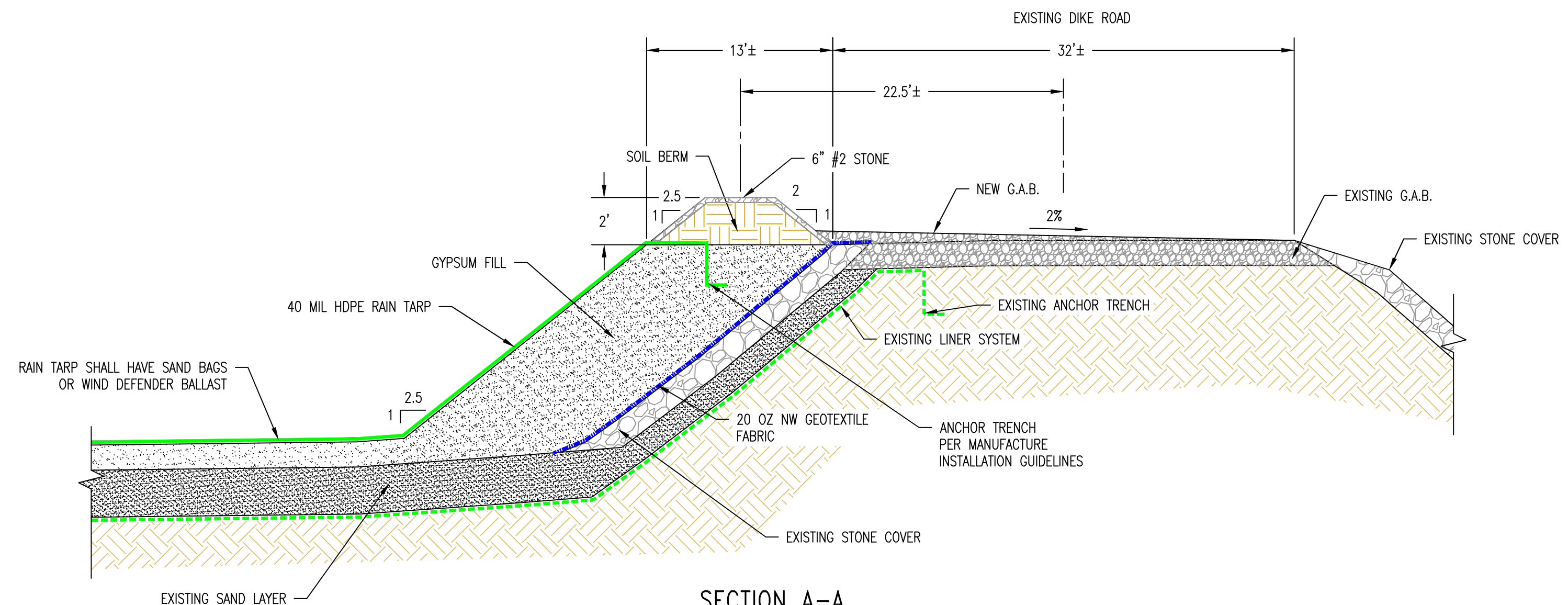
REVISION	DATE	REVISION	DATE	REVISION	DATE	REVISION	DATE	REVISION	DATE	REVISION	DATE

Southern Company Services, Inc.
Copyright © Southern Company Services, Inc. All Rights Reserved.

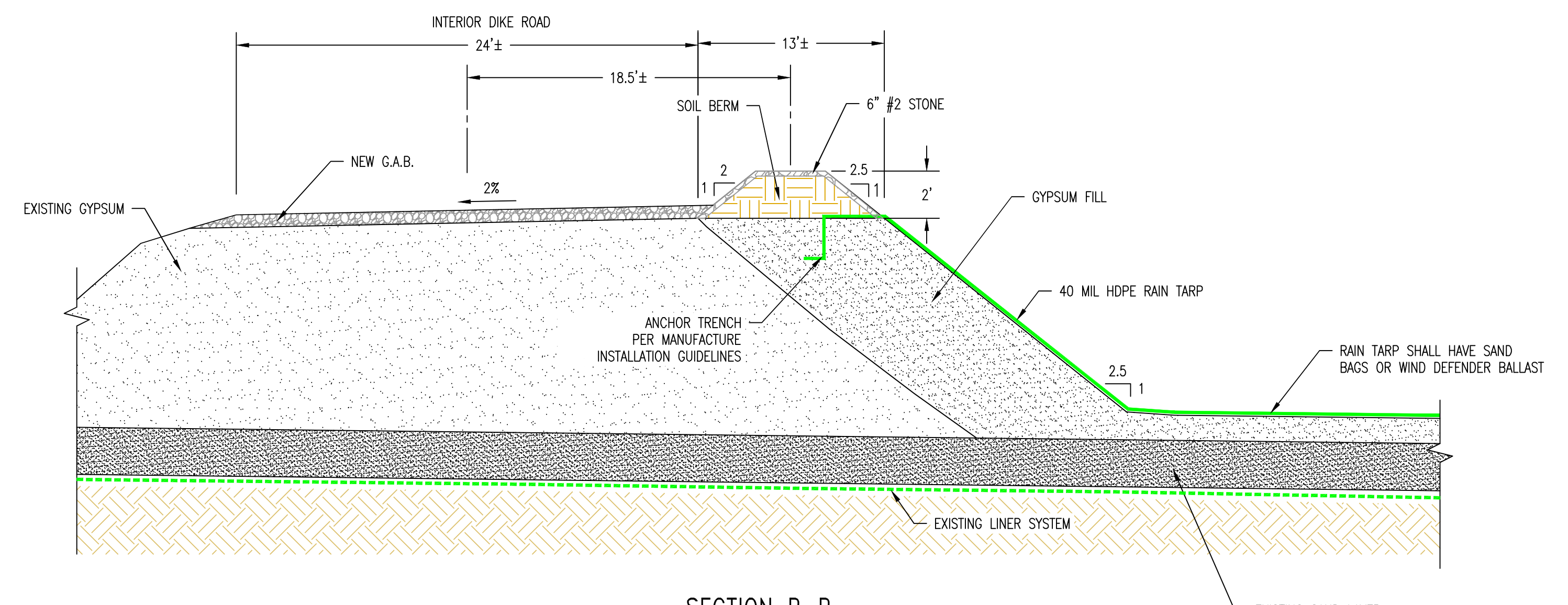
REVISION 0 DATE 2-8-2024
RAIN TARP COVER AND AERATION FOUNTAINS MINOR MODIFICATION [BY HHNT, INC.]

Southern Company Generation Engineering and Construction Services
FOR
Georgia Power Company
PLANT SCHERER
COAL COMBUSTION BY-PRODUCT DISPOSAL FACILITY
CELL 1 RAIN COVER SITE PLAN

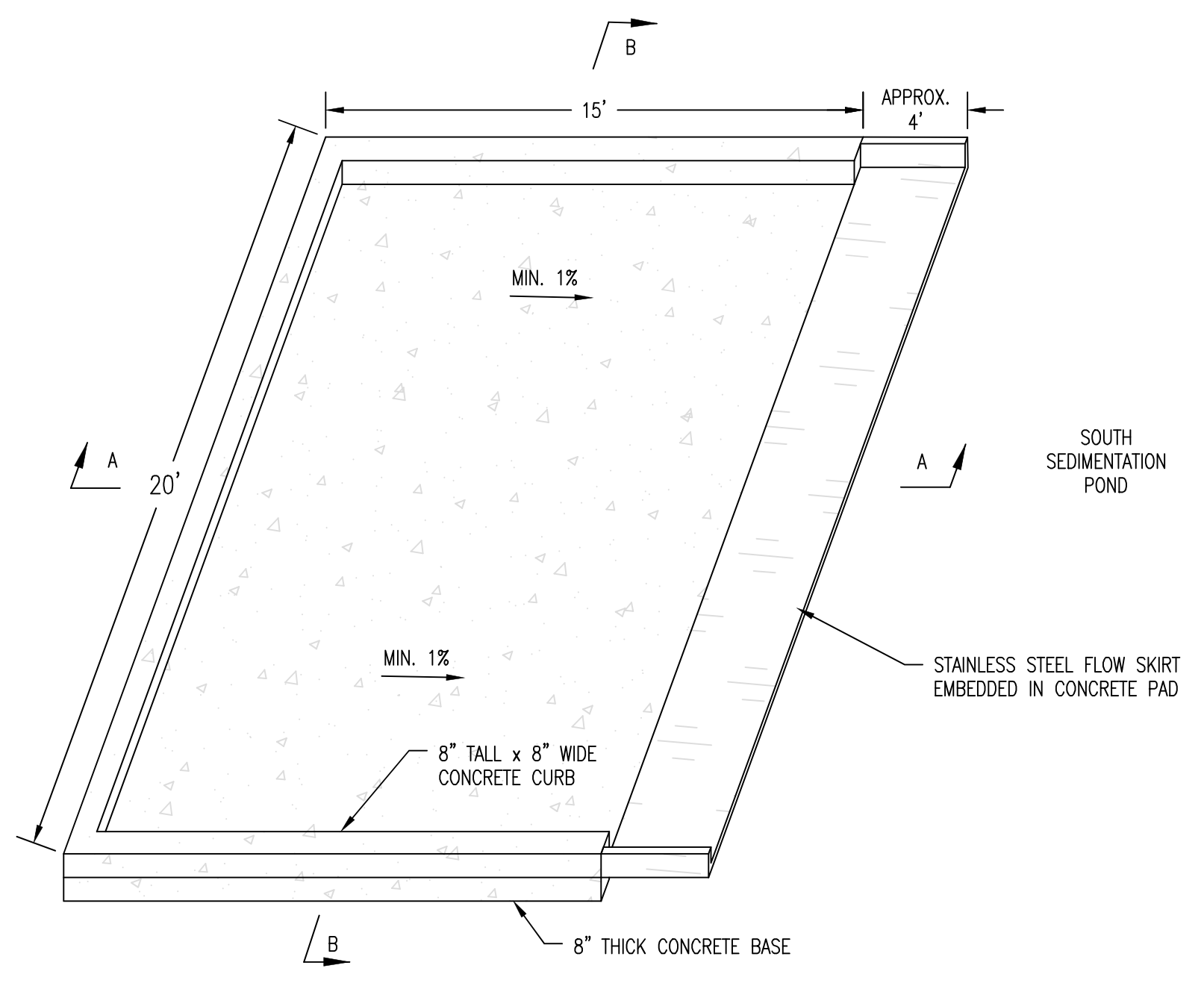
SCALE: 1" = 100'
PROJ. I.D. 010505
DRAWING NUMBER **H1C11055**
SHEET 1 OF 1
CONT'D
REV O



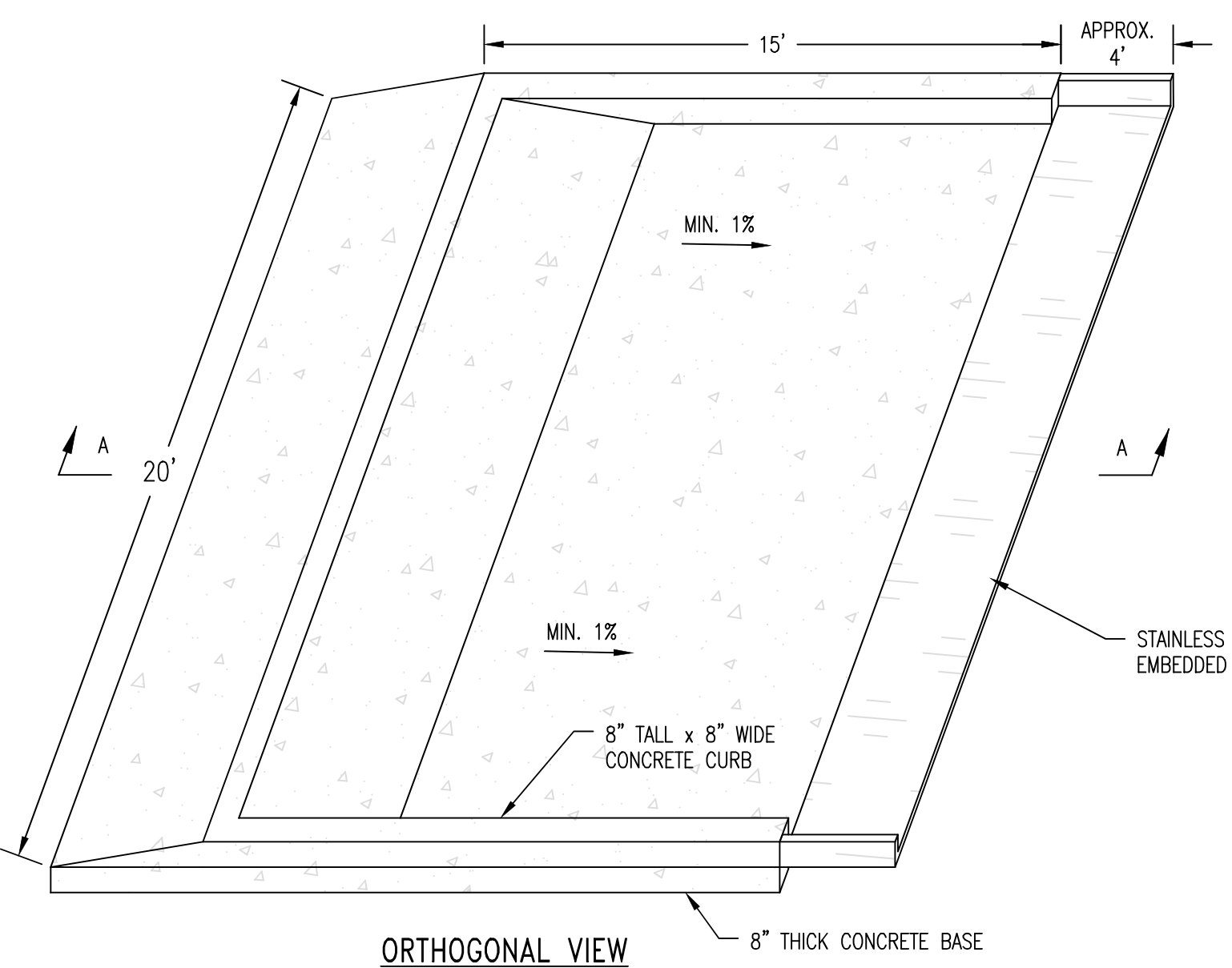
SECTION A-A
N.T.S.
SEE SHT. H1C11055



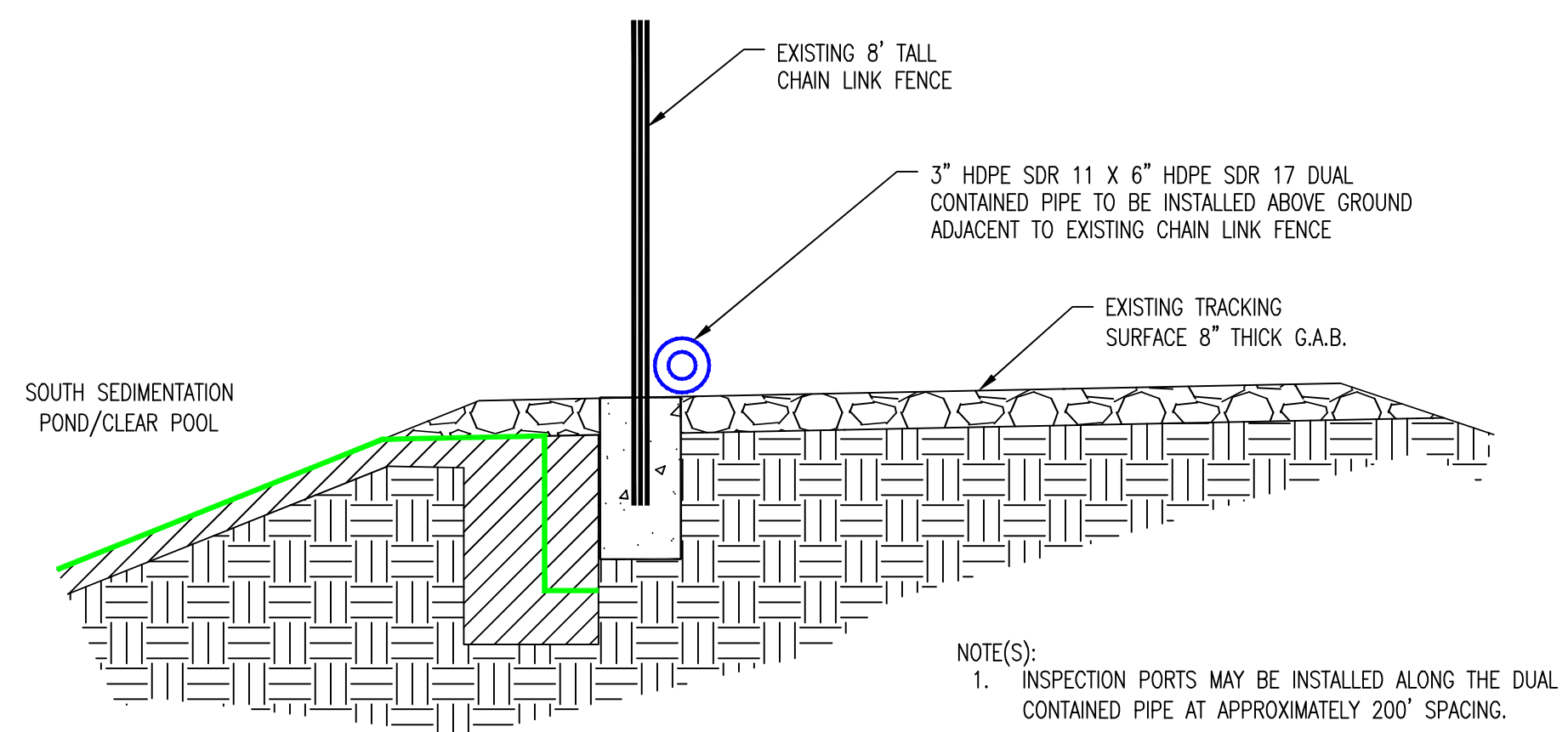
SECTION B-B
N.T.S.
SEE SHT. H1C11055



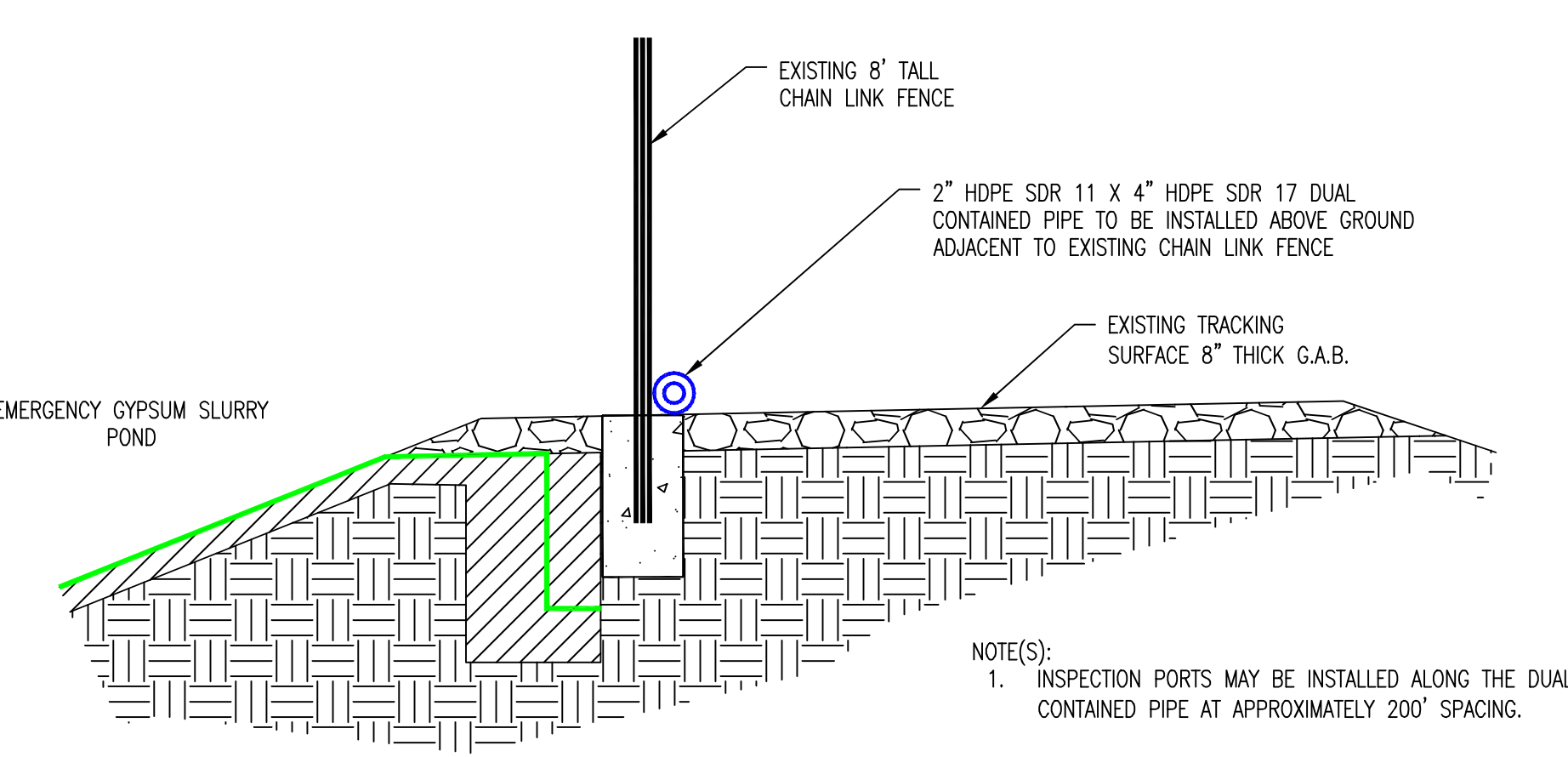
ORTHOGONAL VIEW



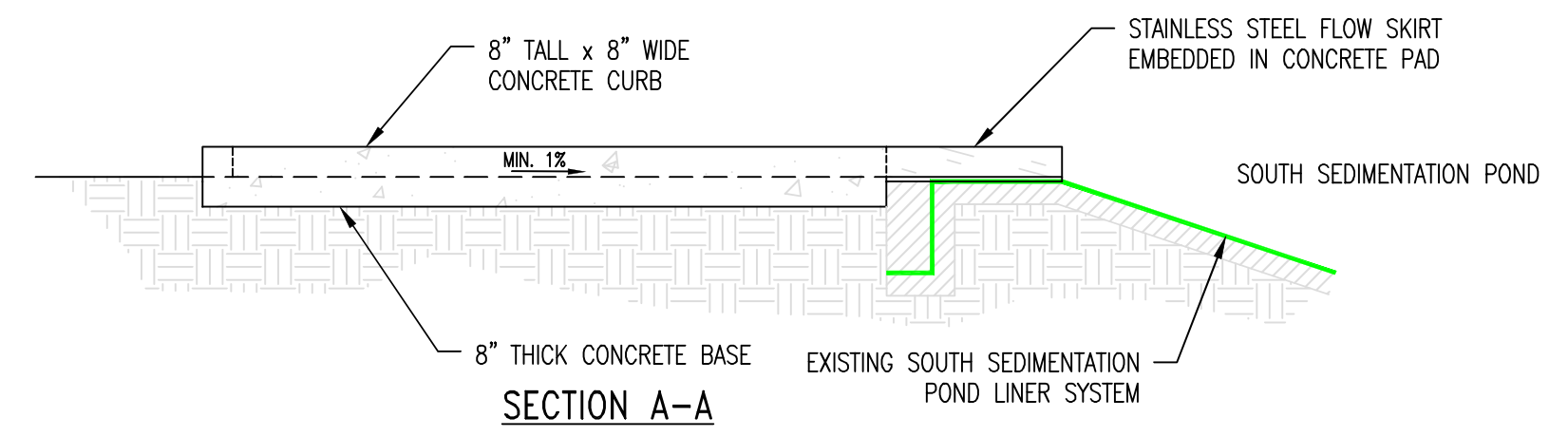
ORTHOGONAL VIEW



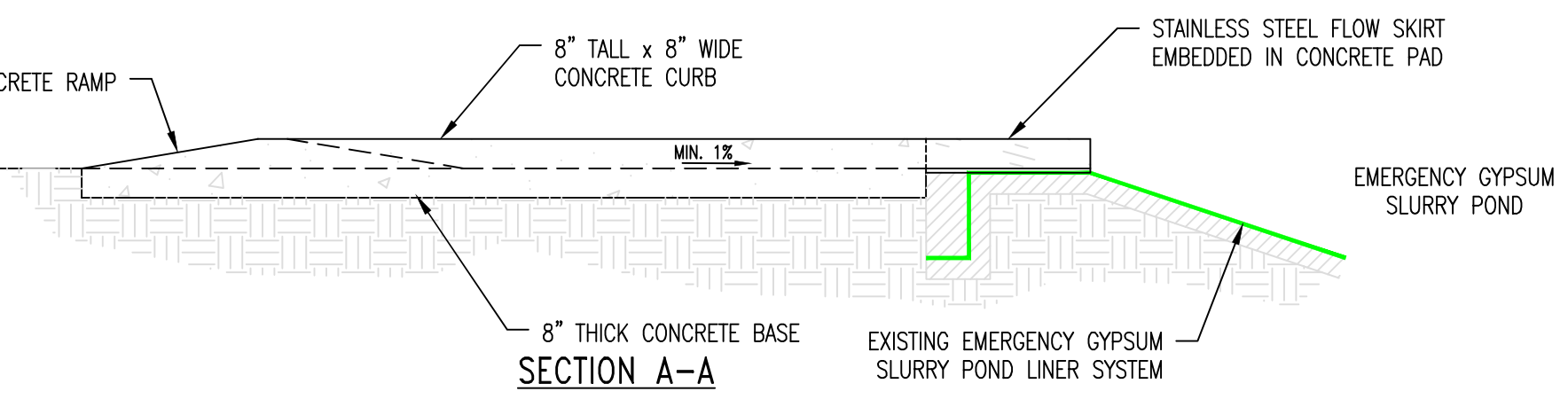
3"x6" DUAL CONTAINED HDPE LEACHATE
CONCENTRATE LINE TO HOLDING TANK
N.T.S.
SEE SHT. H1C11055



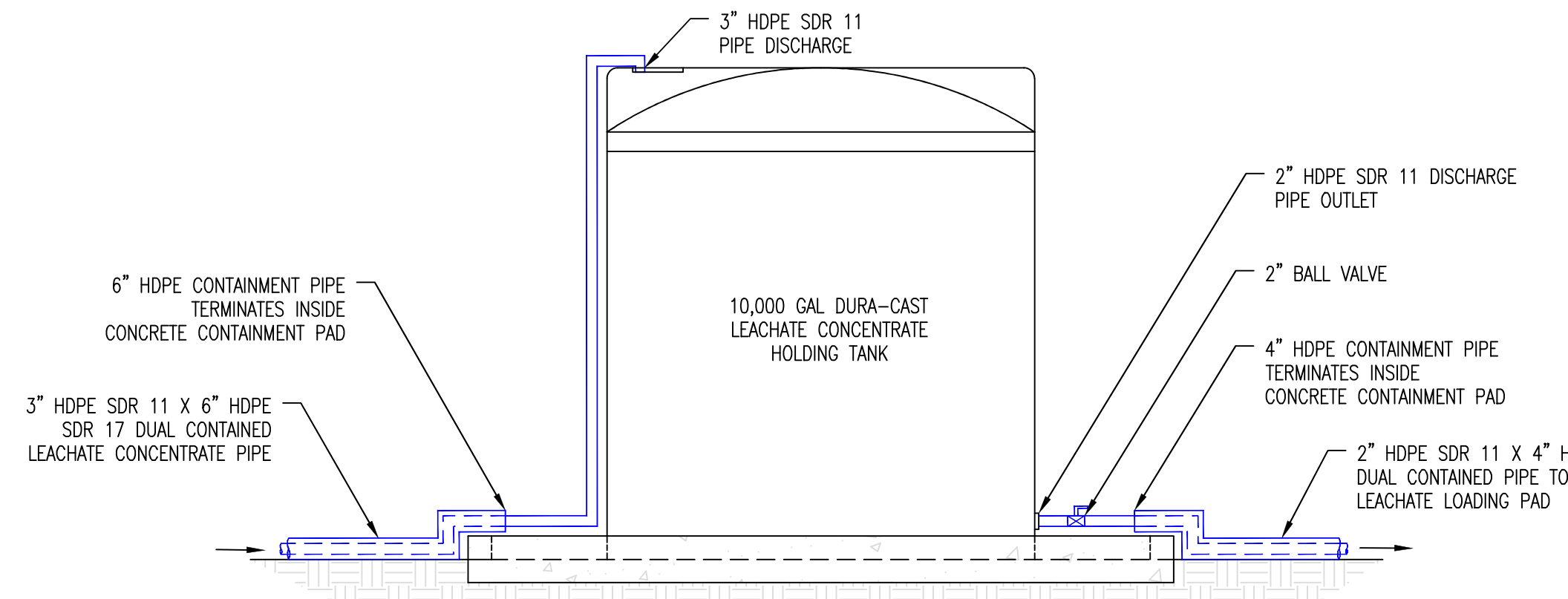
2"x4" DUAL CONTAINED HDPE GRAVITY LINE FROM
LEACHATE CONCENTRATE TANK TO LOADING PAD
N.T.S.
SEE SHT. H1C11055



SECTION A-A



SECTION A-A



SECTION B-B
LEACHATE CONCENTRATE
HOLDING TANK CONCRETE PAD
N.T.S.
SEE SHT. H1C11055

NOTE(S):
1. ALL PIPING OUTSIDE CURBED CONTAINMENT PAD SHALL BE DOUBLE WALLED WITH INSPECTION PORTS.
2. THE LEACHATE CONCENTRATE HOLDING TANK, PIPE CONNECTIONS, AND VALVES SHALL BE INSTALLED SO THAT ANY POTENTIAL SPILL IS LOCATED WITHIN THE CURBED CONTAINMENT PAD AND DRAINS TO THE LINED POND.
3. HOLDING TANK NOT SHOWN IN ORTHOGONAL VIEW AND SECTION A-A FOR DETAIL CLARITY PURPOSES.

NOTE(S):
1. ALL PIPING OUTSIDE CURBED CONTAINMENT PAD SHALL BE DOUBLE WALLED WITH INSPECTION PORTS.
2. THE GRAVITY 2"x4" DUAL CONTAINED PIPE SHALL TRANSITION TO HOSE PIPING WITHIN THE CONTAINMENT PAD FOR TRUCK LOADING. ALL TRUCK CONNECTIONS SHALL BE MADE WITHIN THE CONCRETE SECONDARY CONTAINMENT PAD SO ANY POTENTIAL SPILLS WILL GRAVITY DRAIN TO THE LINED POND.

CONCRETE LEACHATE
CONCENTRATE LOADING PAD
N.T.S.
SEE SHT. H1C11055

NOTES:
1. RAIN TARP SHALL BE HANDLED, INSTALLED, AND ANCHORED IN ACCORDANCE WITH MANUFACTURER SPECIFICATIONS AND GUIDELINES.



REFERENCES:
H1C11015 CELL NO. 1 AND CELL NO. 2 MISCELLANEOUS SECTIONS
H1C11019 CELL NO. 1 AND CELL NO. 2 MISCELLANEOUS DETAILS
H1C11055 CELL 1 RAIN COVER SITE PLAN



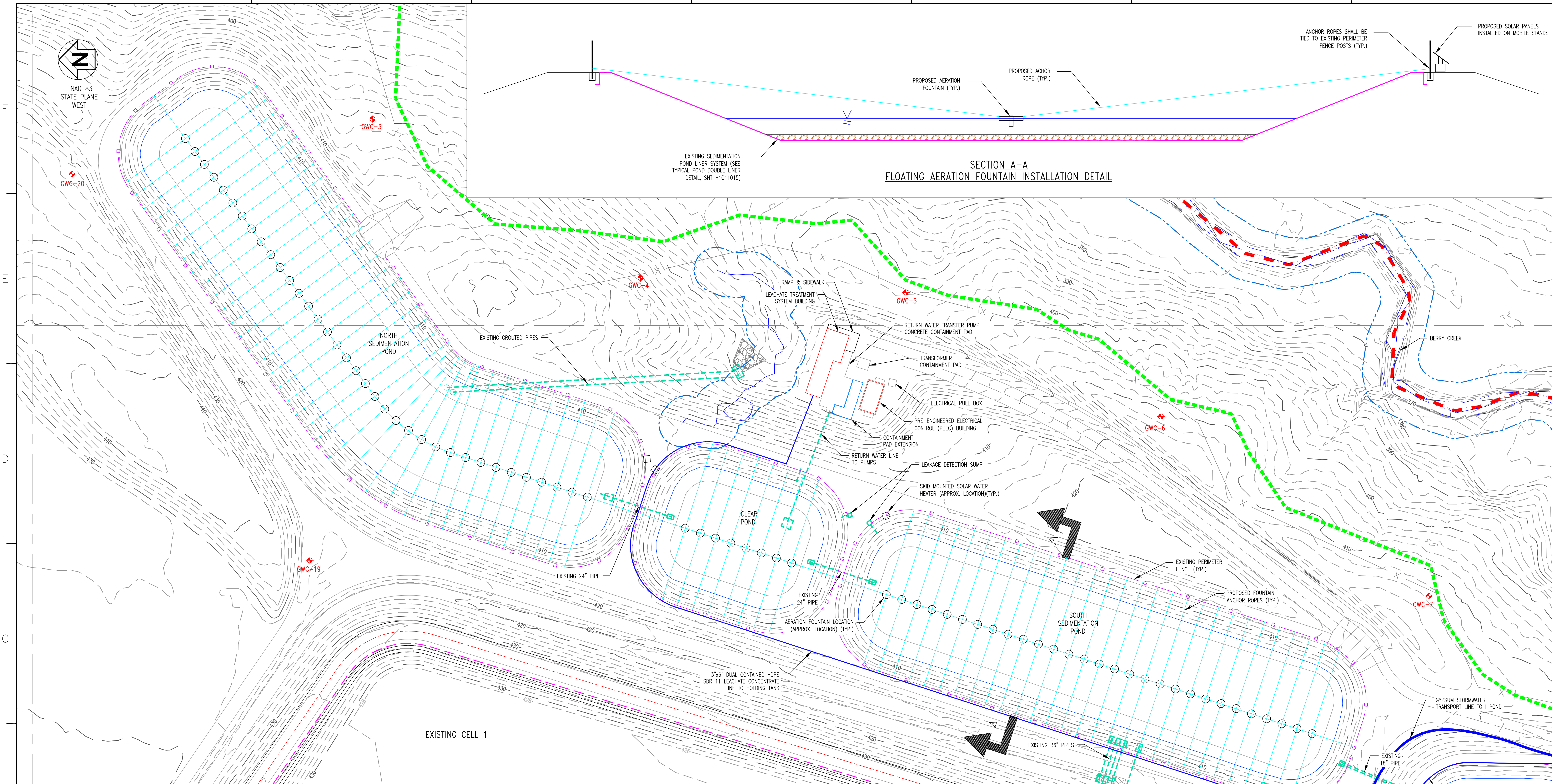
REVISION	DATE	REVISION	DATE	REVISION	DATE	REVISION	DATE	REVISION	DATE	REVISION	DATE																							
BY	CHK'D	CIVL APPR	ELECT APPR	I/C APPR	MECH APPR	DISC MGR	BY	CHK'D	CIVL APPR	ELECT APPR	I/C APPR	MECH APPR	DISC MGR	BY	CHK'D	CIVL APPR	ELECT APPR	I/C APPR	MECH APPR	DISC MGR	BY	CHK'D	CIVL APPR	ELECT APPR	I/C APPR	MECH APPR	DISC MGR	BY	CHK'D	CIVL APPR	ELECT APPR	I/C APPR	MECH APPR	DISC MGR

Southern Company Services, Inc. Copyright © Southern Company Services, Inc. All Rights Reserved

Southern Company Generation Engineering and Construction Services
FOR
Georgia Power Company
PLANT SCHERER
COAL COMBUSTION BY-PRODUCT DISPOSAL FACILITY
RAIN COVER SECTIONS AND DETAILS

REVISION 0 DATE 2-8-2024
RAIN TARP COVER AND AERATION FOUNTAINS MINOR MODIFICATION [BY HHNT, INC.]

SCALE AS SHOWN PROJ. I.D. 010505 DRAWING NUMBER **H1C11055A** SHEET 1 CONT'D 1 REV. FINAL



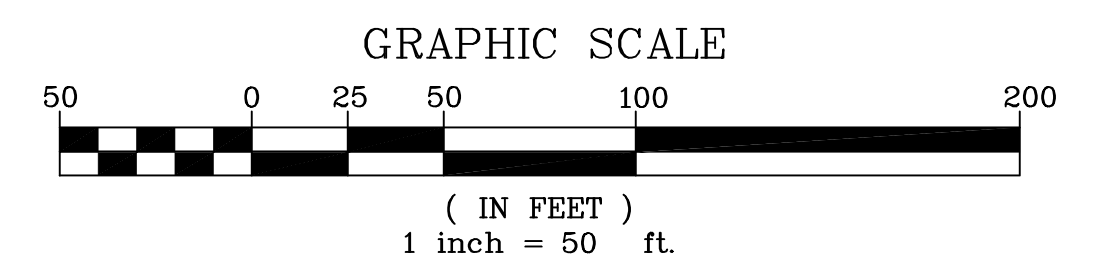
- NOTES:**
1. THE SOLAR POWERED FLOATING AERATION FOUNTAINS ARE PROPOSED TO BE INSTALLED IN THE SOUTH SEDIMENTATION POND, NORTH SEDIMENTATION POND, AND CLEAR POOL TO INCREASE AND AIDE NATURAL EVAPORATION OF COLLECTED LEACHATE. THE FOUNTAINS SHALL BE OUTDOOR WATER SOLUTIONS INC. 1/2 HORSEPOWER AERATING FOUNTAINS WITH 36" POLYSTYRENE FLOATS, OR OWNER APPROVED EQUIVALENT. THE FOUNTAIN SHALL BE IMMERSED NO MORE THAN 18" TO PREVENT ANY POTENTIAL LINER DAMAGE. FOUNTAIN SPRAY HEIGHT SHALL BE NO TALLER THAN 10 FEET TO PREVENT SPRAY FROM EXITING THE LINED POND AREA.
 2. THE FLOATING AERATION FOUNTAINS SHALL BE ANCHORED IN 4 DIRECTIONS BY NYLON ROPE TO HOLD THE FOUNTAINS IN PLACE AND PREVENT ANY POTENTIAL LINER DAMAGE CAUSED BY FOUNTAINS MOVING FROM WIND AND OTHER WEATHER CONDITIONS. ANCHOR ROPES SHALL BE SECURELY FASTENED TO THE EXISTING PERIMETER FENCE POSTS.
 3. SOLAR POWERED SKID MOUNTED WATER HEATERS ARE PROPOSED TO INCREASE THE ENERGY IN THE PONDS TO INCREASE THE EVAPORATION RATE. THE HEATERS SHALL BE TEMPERATURE CONTROLLED AND SHALL HEAT THE DISCHARGE NO MORE THAN 20 DEGREES FAHRENHEIT OVER AMBIENT TEMPERATURE TO PREVENT ANY IMPACT TO THE LINER SYSTEM. THE HEATERS SHALL BE INSTALLED ON A FLAT-BOTTOM SELF SUPPORTING SKID WITH A MAXIMUM GROUND PRESSURE OF 500 LB/FT².
 4. THE SOLAR PANELS AND INVERTERS FOR THE FOUNTAINS AND HEATERS SHALL BE INSTALLED ON MOBILE STANDS WITH LOCKING WHEELS. THE STANDS SHALL BE POSITIONED OUTSIDE THE EDGE OF LINER A SUFFICIENT DISTANCE TO PREVENT LINER DAMAGE IN THE EVENT OF HIGH WINDS. THE POWER CABLES FROM THE SOLAR PANELS TO THE EVAPORATORS SHALL BE RATED FOR FULL SUBMERSION IN WATER.
 5. THE SOLAR FOUNTAINS AND HEATERS SHALL TURN ON AND OFF AUTOMATICALLY BASED ON ADEQUATE SUNLIGHT. THEY CAN ALSO BE MANUALLY SHUT-DOWN BY DISCONNECTING THE POWER CORD FROM THE SOLAR PANELS.
 6. FOUNTAIN MAINTENANCE AND REPAIR SHALL BE PERFORMED OUTSIDE OF THE POND AREA. THE OPERATOR SHALL ALLOW THE EXISTING PONDS TO DEWATER SO THAT THE FOUNTAINS ARE ACCESSIBLE BY FOOT AND THEN THE FOUNTAINS SHALL BE DISCONNECTED FROM THE ANCHOR ROPES AND TRANSPORTED OUT OF THE POND FOR MAINTENANCE OR REPAIR. SPARE FOUNTAINS MAY BE UTILIZED WHILE REPAIRS ARE BEING COMPLETED.
 7. FOUNTAIN LOCATIONS SHOWN ON THIS SHEET ARE CONCEPTUAL IN NATURE. OWNER MAY INSTALL MORE OR LESS FOUNTAINS AT THEIR DISCRETION AND DEPENDING ON SITE SPECIFIC NEEDS AND CONDITIONS.

- LEGEND:**
- - - 720 - - - EXISTING CONTOURS (MAJOR)
 - - - 718 - - - EXISTING CONTOURS (MINOR)
 - - - - - SITE BOUNDARY
 - - - - - 200' BUFFER
 - - - - - 25' STREAM AND WETLAND BUFFER
 - WETLANDS
 - - - - - EXISTING FENCE
 - GW-20 EXISTING MONITORING WELL



- NOTES:**
1. THE EXISTING SURVEY IS SHOWN IN A COMPOSITE OF THE FOLLOWING SURVEYS.
 - A.) SURVEY PERFORMED BY METRO ENGINEERING AND SURVEY CO. DATED 12-15-05.
 - B.) CELL 1 SURVEY PERFORMED BY CIVIL FIELD SERVICES DATED 1-9-23.
 - C.) PIPE CORRIDOR SURVEY PERFORMED BY CIVIL FIELD SERVICES DATED 6-15-23.

REFERENCES:
H1C11055A: RAIN COVER SECTIONS AND DETAILS



REVISION	DATE	REVISION	DATE	REVISION	DATE	REVISION	DATE	REVISION	DATE	REVISION	DATE

REVISION 0	DATE 2-8-2024
RAIN TARP COVER AND AERATION FOUNTAINS MINOR MODIFICATION [BY HHNT, INC.]	

Southern Company Generation Engineering and Construction Services
FOR
Georgia Power Company
PLANT SCHERER
COAL COMBUSTION BY-PRODUCT DISPOSAL FACILITY
AERATION FOUNTAINS SITE PLAN

SCALE 1" = 50'	PROJ. I.D. 010505	DRAWING NUMBER H1C11055B	SHEET 1	CONT'D	REV. O
----------------	-------------------	--------------------------	---------	--------	--------