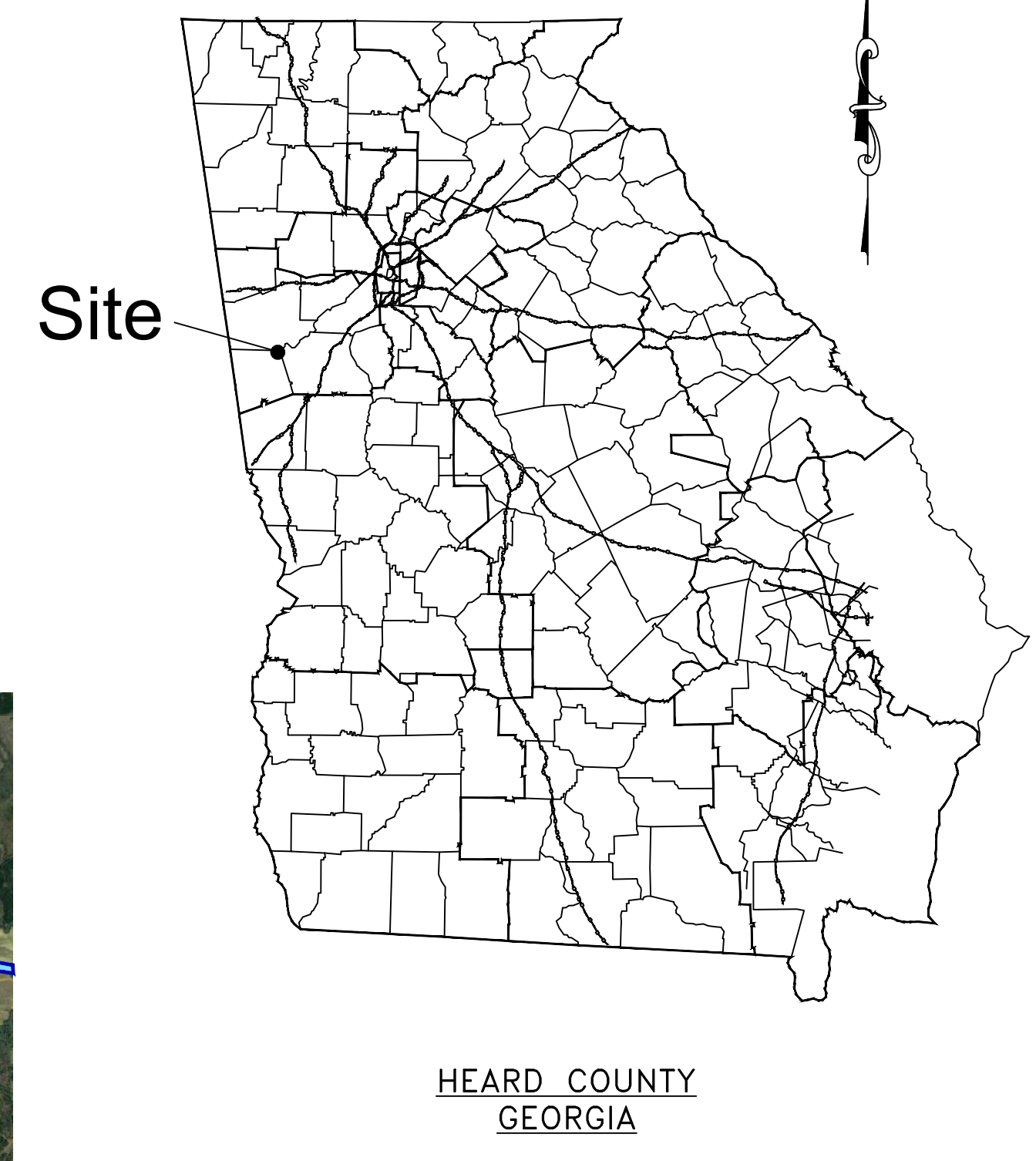


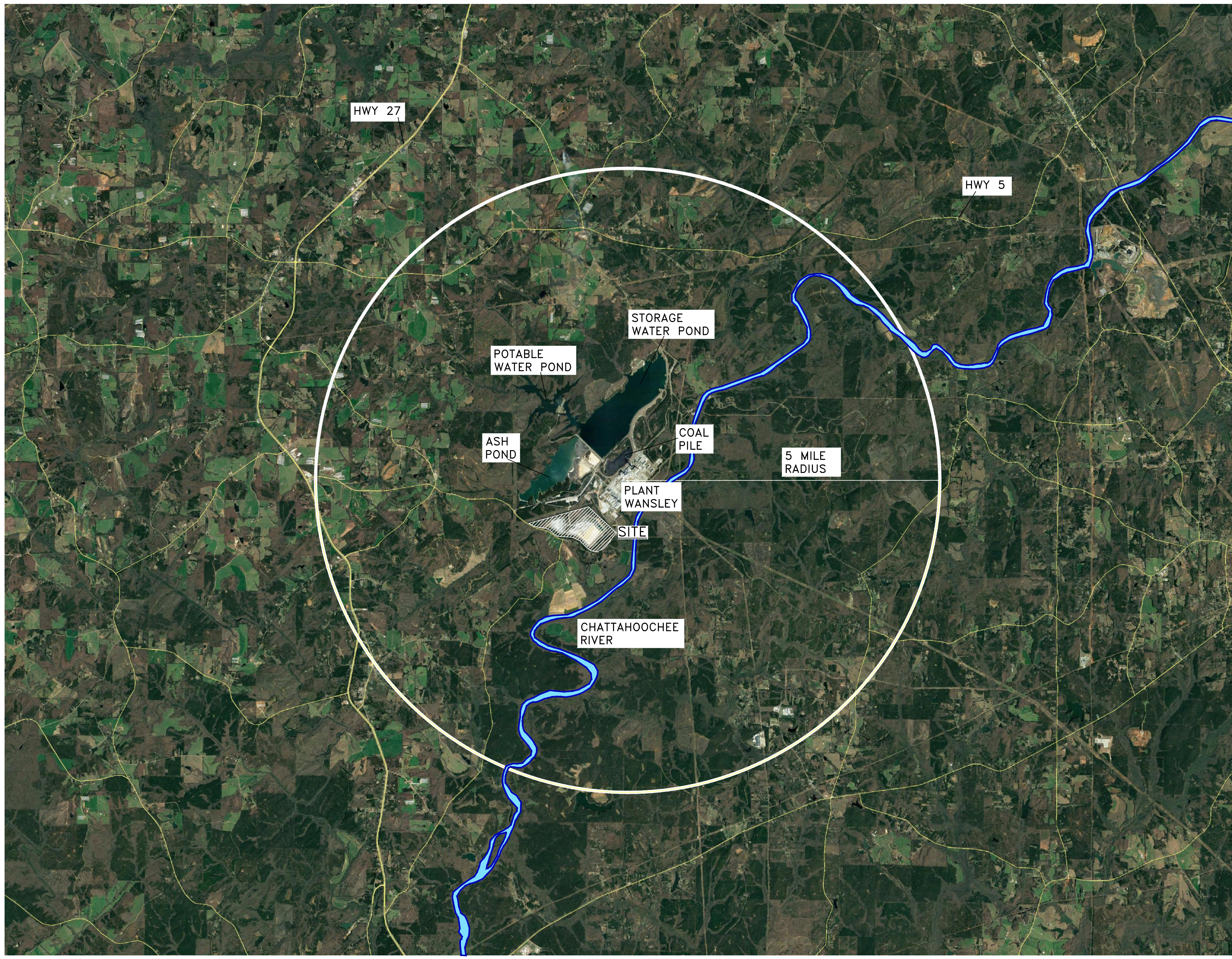
GEORGIA POWER COMPANY

PLANT WANSLEY COAL COMBUSTION RESIDUALS (CCR) LANDFILL PERMIT DRAWINGS HEARD COUNTY, GEORGIA NOVEMBER 2023

LOCATION MAP
SCALE AS SHOWN



- DRAWING INDEX:**
- H1C11120, REV. 3, TITLE SHEET AND DRAWING INDEX
 - H1C11121, REV. 0, PERMITTED SITE BOUNDARY, PLAT AND LEGAL DESCRIPTION
 - H1C11122, REV. 0, SITE TOPOGRAPHIC SURVEY
 - H1C11123, REV. 0, SITE STREAM & WETLAND BUFFERS, 100Y FLOOD PLAIN, & BORING LOCATIONS
 - H1C11124, REV. 3, GENERAL SITE DEVELOPMENT, CELL LAYOUT
 - H1C11125, REV. 2, CELL NO. 1 SITE DEVELOPMENT, BASE GRADE PLAN
 - H1C11126, REV. 3, CELL NO. 2 SITE DEVELOPMENT, ROUGH GRADE/BORROW PLAN
 - H1C11130, REV. 2, CELL NO. 1 SITE DEVELOPMENT, FINAL STACKING PLAN
 - H1C11131, REV. 3, CELL NO. 2 SITE DEVELOPMENT, BASE GRADING PLAN
 - H1C11132, REV. 2, CELL NOS. 1 & 2 COMBINED, FINAL STACKING PLAN
 - H1C11133, REV. 3, CELL NO. 3 SITE DEVELOPMENT, BASE GRADE PLAN
 - H1C11134, REV. 3, CELL NO. 3, FINAL STACKING PLAN
 - H1C11135, REV. 1, CELL NO. 1 SECTIONS THRU STACK
 - H1C11136, REV. 1, CELL NO. 2 SECTIONS THRU STACK
 - H1C11137, REV. 1, CELL NO. 3 SECTIONS THRU STACK
 - H1C11138, REV. 1, CELL 1 THROUGH CELL 3, MISCELLANEOUS SECTIONS, SHEET 1
 - H1C11139, REV. 1, CELL 1 THROUGH CELL 3, MISCELLANEOUS SECTIONS, SHEET 2
 - H1C11140, REV. 1, CELL 1 THROUGH CELL 3, MISCELLANEOUS SECTIONS, SHEET 3
 - H1C11141, REV. 0, CELL NO. 1 AND CELL NO. 2 SEDIMENT POND SPILLWAY, SECTIONS AND DETAILS
 - H1C11142, REV. 0, GENERAL GYPSUM STACKING, OPERATION PLAN
 - H1C11143, REV. 0, CELL 1 THROUGH CELL 3, MISCELLANEOUS DETAILS, SHEET 1
 - H1C11144, REV. 0, CELL 1 THROUGH CELL 3, MISCELLANEOUS DETAILS, SHEET 2
 - H1C11145, REV. 0, CELL 1 THROUGH CELL 3, MISCELLANEOUS DETAILS, SHEET 3
 - H1C11146, REV. 0, CELL 1 THROUGH CELL 3, MISCELLANEOUS SECTIONS AND DETAILS, SHEET 1
 - H1C11147, REV. 0, CELL 1 THROUGH CELL 3, MISCELLANEOUS SECTIONS AND DETAILS, SHEET 2
 - H1C11148, REV. 0, CELL 1 THROUGH CELL 3, MISCELLANEOUS SECTIONS AND DETAILS, SHEET 3
 - H1C11149, REV. 0, CELL 1 THROUGH CELL 3, EROSION CONTROL SECTIONS & DETAILS, SHEET 1
 - H1C11150, REV. 0, CELL 1 THROUGH CELL 3, EROSION CONTROL SECTIONS & DETAILS, SHEET 2
 - H1C11151, REV. 0, CELL 1 THROUGH CELL 3, SIPHON SECTIONS AND DETAILS
 - H1C11152, REV. 0, CELL 1 THROUGH CELL 3, FLUME DATA SHEET
 - H1C11153, REV. 2, GENERAL SITE DEVELOPMENT, CELL NO. 1, LEACHATE COLLECTION SYSTEM LAYOUT
 - H1C11154, REV. 2, GENERAL SITE DEVELOPMENT, CELL NO. 2, LEACHATE COLLECTION SYSTEM LAYOUT
 - H1C11155, REV. 2, GENERAL SITE DEVELOPMENT, CELL NO. 3, LEACHATE COLLECTION SYSTEM LAYOUT
 - H1C11155A, REV. 0, GENERAL SITE DEVELOPMENT, CELL 1 THROUGH CELL 3, LEACHATE COLLECTION SYSTEM DETAILS
 - H1C11155B, REV. 0, GENERAL SITE DEVELOPMENT, CELL 1 AND CELL 2, LEACHATE COLLECTION SYSTEM DETAILS
 - H1C11160, REV. 0, GEOLOGIC CROSS-SECTIONS A-A AND B-B
 - H1C11161, REV. 1, POTENTIOMETRIC SURFACE MAP, 11/17/2006
 - H1C11163, REV. 1, POTENTIOMETRIC SURFACE MAP, 4/10/2009
 - H1C11165, REV. 2, COMPLIANCE NETWORK
 - H1C11168, REV. 1, GENERAL SITE DEVELOPMENT, PROPOSED LINER IMPROVEMENT PLAN
 - H1C11169, REV. 1, GENERAL SITE DEVELOPMENT, OPTIONAL PASTING OPERATIONS PLAN
 - H1C11170, REV. 0, CELLS NO. 1 AND NO. 2, SECTIONS THRU STACK - OPTIONAL PASTING OPERATIONS
 - H1C11171, REV. 0, CELL NO. 3, SECTIONS THRU STACK - OPTIONAL PASTING OPERATIONS



RESPONSIBLE OFFICIAL	ADDRESS
VICE PRESIDENT ENVIRONMENTAL AFFAIRS GEORGIA POWER COMPANY BIN 10221 241 RALPH MCGILL BLVD. ATLANTA, GEORGIA 30308 (404) 506-7777	PLANT WANSLEY 1371 LIBERTY CHURCH ROAD CARROLTON, GA 30116
PROPERTY OWNER	CCR LANDFILL PERMIT APPLICATION CONSULTANT
GEORGIA POWER COMPANY 241 RALPH MCGILL BLVD. ATLANTA, GEORGIA 30308	HODGES, HARBIN, NEWBERRY & TRIBBLE, INC (HHNT, INC.) 3920 ARKRIGHT RD, SUITE 101 MACON, GA 31210 (478) 743-7175
CONSULTANT	
SOUTHERN COMPANY GENERATION GARY McWHORTER BIN 10160 241 RALPH MCGILL BLVD. ATLANTA, GEORGIA 30308 TEL: (404) 506-7291	



PERMIT REVISION HISTORY: THE ORIGINAL PERMIT DRAWINGS FOR THE PLANT WANSLEY CCR LANDFILL WERE PREPARED BY SOUTHERN COMPANY GENERATION ENGINEERING AND CONSTRUCTION SERVICES (SCGES). THESE PERMIT DRAWINGS WERE REVIEWED BY GEORGIA EPD AND APPROVED ON JUNE 15, 2010 AS PART OF THE FACILITY'S SOLID WASTE HANDLING PERMIT WITH SUBSEQUENT REVISIONS TO THE DRAWINGS APPROVED BY GEORGIA EPD THROUGH PERMIT MODIFICATIONS. HODGES, HARBIN, NEWBERRY, AND TRIBBLE INC. (HHNT) HAS ASSISTED GEORGIA POWER COMPANY IN PREPARATION OF THE CCR LANDFILL PERMIT AS REQUIRED BY THE NEW SOLID WASTE RULE 391-4-.10(9)(a) FOR COAL COMBUSTION RESIDUAL UNITS. MINOR PLAN REVISIONS AND UPDATES HAVE BEEN MADE AS PART OF THE NEW CCR LANDFILL PERMITTING PROCESS AND ARE INCLUDED HEREIN. AT THE REQUEST OF GEORGIA EPD AND AS PART OF THE NEW CCR PERMIT PROCESS, ALL PREVIOUS PLAN REVISION NOTES FOR THE FACILITY'S ORIGINAL SOLID WASTE HANDLING PERMIT HAVE BEEN REMOVED.



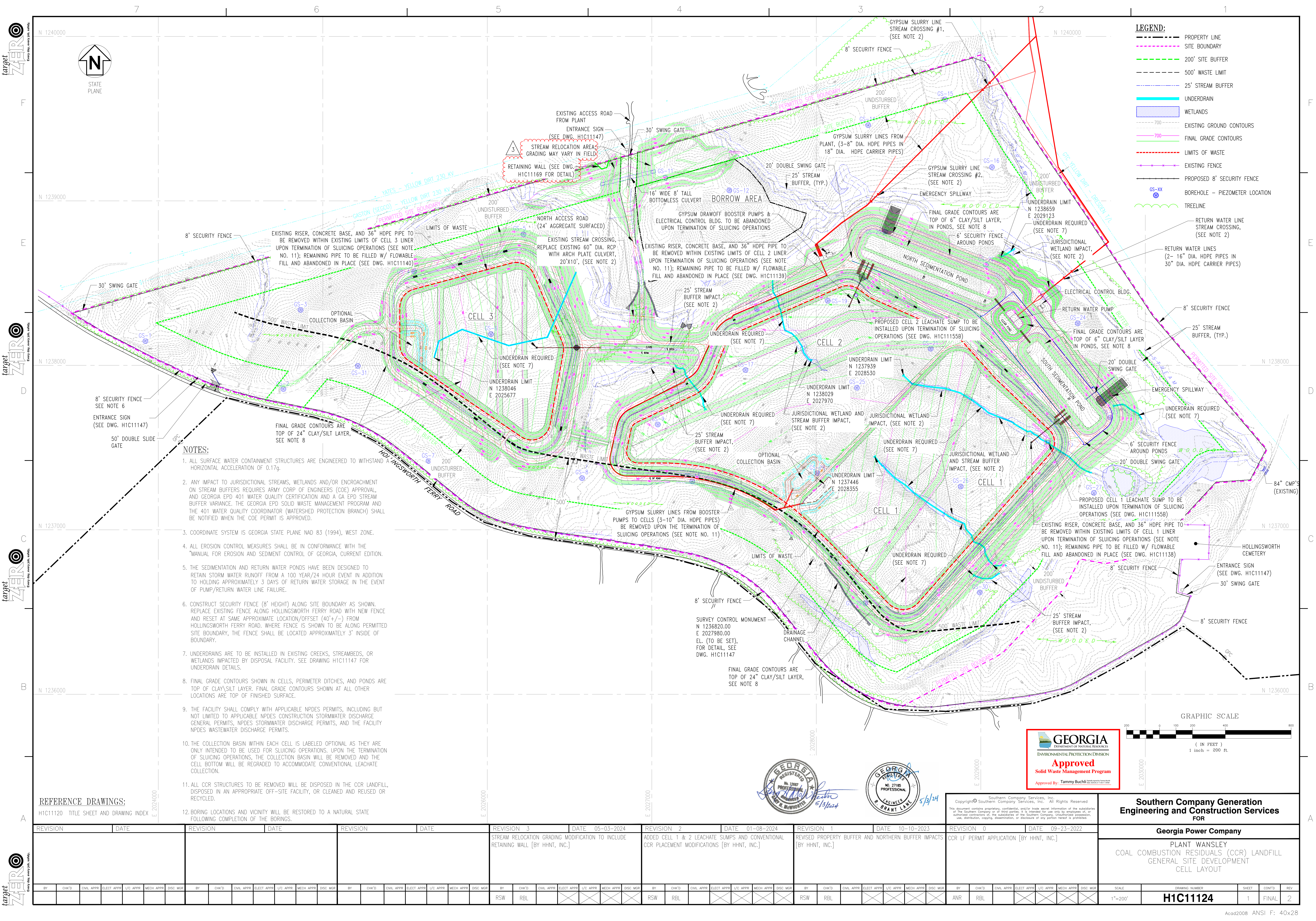
LEGEND:
 COAL COMBUSTION BY-PRODUCT DISPOSAL FACILITY AREA

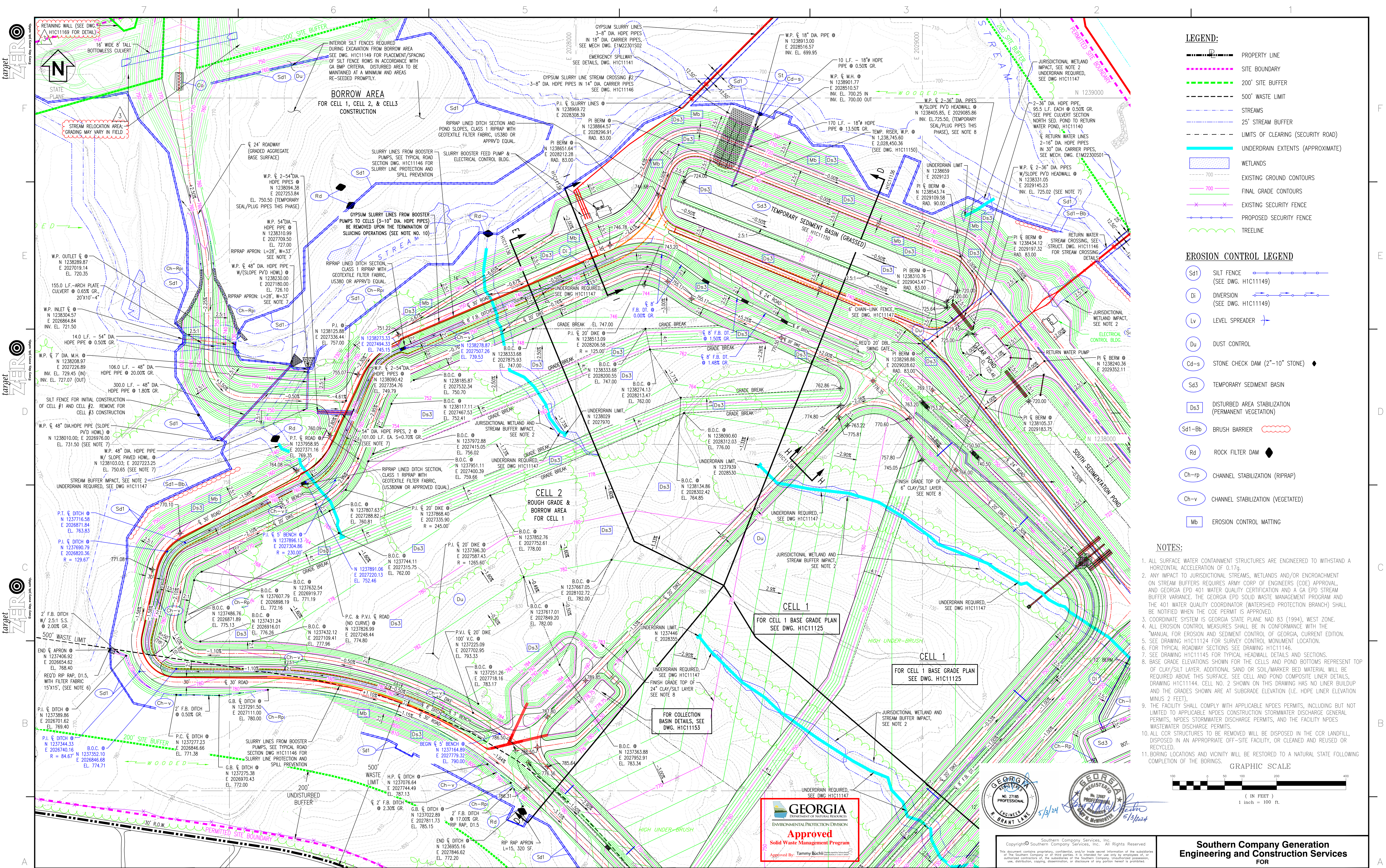
NOTE: COAL-COMBUSTION BY-PRODUCTS (CCB) AND COAL COMBUSTION RESIDUALS (CCR) HAVE THE SAME MEANING IN THESE PERMIT DRAWINGS.

REVISION 3		DATE 05-03-2024		REVISION 2		DATE 01-08-2024		REVISION 1		DATE 10-10-2023		REVISION 0		DATE 09-23-2022																			
STREAM RELOCATION GRADING REVISION INCLUDING RETAINING WALL [BY HHNT, INC.]				CONVENTIONAL CCR PLACEMENT MODIFICATIONS, OPTIONAL PASTING OPERATIONS [BY HHNT, INC.]				REVISED PROPERTY BUFFER AND NORTHERN BUFFER IMPACTS, REMOVED SECURITY ROAD PLAN AND PROFILE SHEETS, DRAWINGS H1C1127 AND H1C1128 [BY HHNT, INC.]				CCR LF PERMIT APPLICATION [BY HHNT, INC.]																					
BY	CHKD	CIVL APPR	ELECT APPR	IC APPR	MECH APPR	DISC MGR	BY	CHKD	CIVL APPR	ELECT APPR	IC APPR	MECH APPR	DISC MGR	BY	CHKD	CIVL APPR	ELECT APPR	IC APPR	MECH APPR	DISC MGR	BY	CHKD	CIVL APPR	ELECT APPR	IC APPR	MECH APPR	DISC MGR	SCALE	PROJ ID	DRAWING NUMBER	SHEET	CONTD	REV
RSW	RBL						RSW	RBL						RSW	RBL						ANR	RBL						AS SHOWN	010209	H1C11120	1	FINAL	2

Southern Company Generation Engineering and Construction Services FOR Georgia Power Company PLANT WANSLEY COAL COMBUSTION RESIDUALS (CCR) LANDFILL TITLE SHEET AND DRAWING INDEX

Copyright © Southern Company Services, Inc. All Rights Reserved

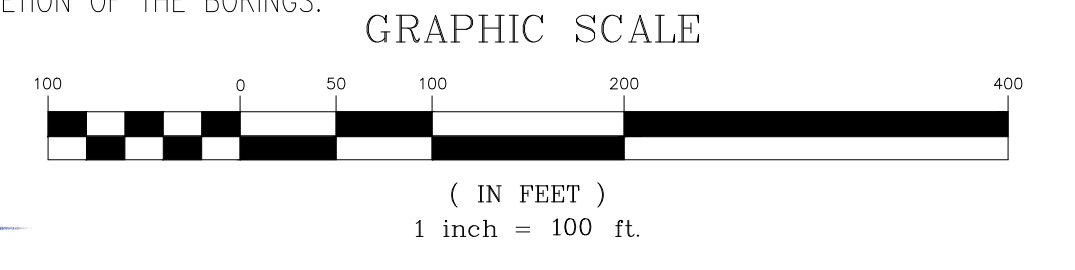




- LEGEND:**
- PROPERTY LINE
 - SITE BOUNDARY
 - 200' SITE BUFFER
 - 500' WASTE LIMIT
 - STREAMS
 - 25' STREAM BUFFER
 - LIMITS OF CLEARING (SECURITY ROAD)
 - UNDERDRAIN EXTENTS (APPROXIMATE)
 - WETLANDS
 - EXISTING GROUND CONTOURS
 - FINAL GRADE CONTOURS
 - EXISTING SECURITY FENCE
 - PROPOSED SECURITY FENCE
 - TREELINE

- EROSION CONTROL LEGEND**
- Sd1 SILT FENCE (SEE DWG. H1C11149)
 - Di DIVERSION (SEE DWG. H1C11149)
 - Lv LEVEL SPREADER
 - Du DUST CONTROL
 - Cd-s STONE CHECK DAM (2"-10" STONE)
 - Sd3 TEMPORARY SEDIMENT BASIN
 - Ds3 DISTURBED AREA STABILIZATION (PERMANENT VEGETATION)
 - Sd1-Bb BRUSH BARRIER
 - Rd ROCK FILTER DAM
 - Ch-rp CHANNEL STABILIZATION (RIPRAP)
 - Ch-v CHANNEL STABILIZATION (VEGETATED)
 - Mb EROSION CONTROL MATING

- NOTES:**
1. ALL SURFACE WATER CONTAINMENT STRUCTURES ARE ENGINEERED TO WITHSTAND A HORIZONTAL ACCELERATION OF 0.17g.
 2. ANY IMPACT TO JURISDICTIONAL STREAMS, WETLANDS AND/OR ENCROACHMENT ON STREAM BUFFERS REQUIRES ARMY CORP OF ENGINEERS (COE) APPROVAL, AND GEORGIA EPD 401 WATER QUALITY CERTIFICATION AND A GA EPD STREAM BUFFER VARIANCE. THE GEORGIA EPD SOLID WASTE MANAGEMENT PROGRAM AND THE 401 WATER QUALITY COORDINATOR (WATERSHED PROTECTION BRANCH) SHALL BE NOTIFIED WHEN THE COE PERMIT IS APPROVED.
 3. COORDINATE SYSTEM IS GEORGIA STATE PLANE NAD 83 (1994), WEST ZONE.
 4. ALL EROSION CONTROL MEASURES SHALL BE IN CONFORMANCE WITH THE "MANUAL FOR EROSION AND SEDIMENT CONTROL OF GEORGIA, CURRENT EDITION.
 5. SEE DRAWING H1C11124 FOR SURVEY CONTROL MONUMENT LOCATION.
 6. FOR TYPICAL ROADWAY SECTIONS SEE DRAWING H1C11146.
 7. SEE DRAWING H1C11145 FOR TYPICAL HEADWALL DETAILS AND SECTIONS.
 8. BASE GRADE ELEVATIONS SHOWN FOR THE CELLS AND POND BOTTOMS REPRESENT TOP OF CLAY/SILT LAYER. ADDITIONAL SAND OR SOIL/MARKER BED MATERIAL WILL BE REQUIRED ABOVE THIS SURFACE. SEE CELL AND POND COMPOSITE LINER DETAILS, DRAWING H1C11144. CELL NO. 2 SHOWN ON THIS DRAWING HAS NO LINER BUILDUP AND THE GRADES SHOWN ARE AT SUBGRADE ELEVATION (I.E. HOPE LINER ELEVATION MINUS 2 FEET).
 9. THE FACILITY SHALL COMPLY WITH APPLICABLE NPDES PERMITS, INCLUDING BUT NOT LIMITED TO APPLICABLE NPDES CONSTRUCTION STORMWATER DISCHARGE GENERAL PERMITS, NPDES STORMWATER DISCHARGE PERMITS, AND THE FACILITY NPDES WASTEWATER DISCHARGE PERMITS.
 10. ALL CCR STRUCTURES TO BE REMOVED WILL BE DISPOSED IN THE CCR LANDFILL, DISPOSED IN AN APPROPRIATE OFF-SITE FACILITY, OR CLEANED AND REUSED OR RECYCLED.
 11. BORING LOCATIONS AND VICINITY WILL BE RESTORED TO A NATURAL STATE FOLLOWING COMPLETION OF THE BORINGS.



REVISION	DATE	REVISION	DATE	REVISION	DATE	REVISION	DATE	REVISION	DATE	REVISION	DATE	REVISION	DATE																
REVISION 3	05-03-2024	REVISION 2	01-08-2024	REVISION 1	10-10-2023	REVISION 0	09-23-2022																						
STREAM RELOCATION GRADING MODIFICATION TO INCLUDE RETAINING WALL [BY HHNT, INC.]				CONVENTIONAL CCR PLACEMENT MODIFICATIONS [BY HHNT, INC.]				REVISED PROPERTY BUFFER AND NORTHERN BUFFER IMPACTS [BY HHNT, INC.]				CCR LF PERMIT APPLICATION [BY HHNT, INC.]																	
BY	CHK'D	CIVL APPR	ELECT APPR	V/C APPR	MECH APPR	DISC MGR		BY	CHK'D	CIVL APPR	ELECT APPR	V/C APPR	MECH APPR	DISC MGR	BY	CHK'D	CIVL APPR	ELECT APPR	V/C APPR	MECH APPR	DISC MGR	BY	CHK'D	CIVL APPR	ELECT APPR	V/C APPR	MECH APPR	DISC MGR	
RSW	RBL							RSW	RBL						ANR	RBL													

Southern Company Generation Engineering and Construction Services FOR

Georgia Power Company

PLANT WANSLEY
COAL COMBUSTION RESIDUALS (CCR) LANDFILL
CELL NO.2 SITE DEVELOPMENT
ROUGH GRADE/BORROW PLAN

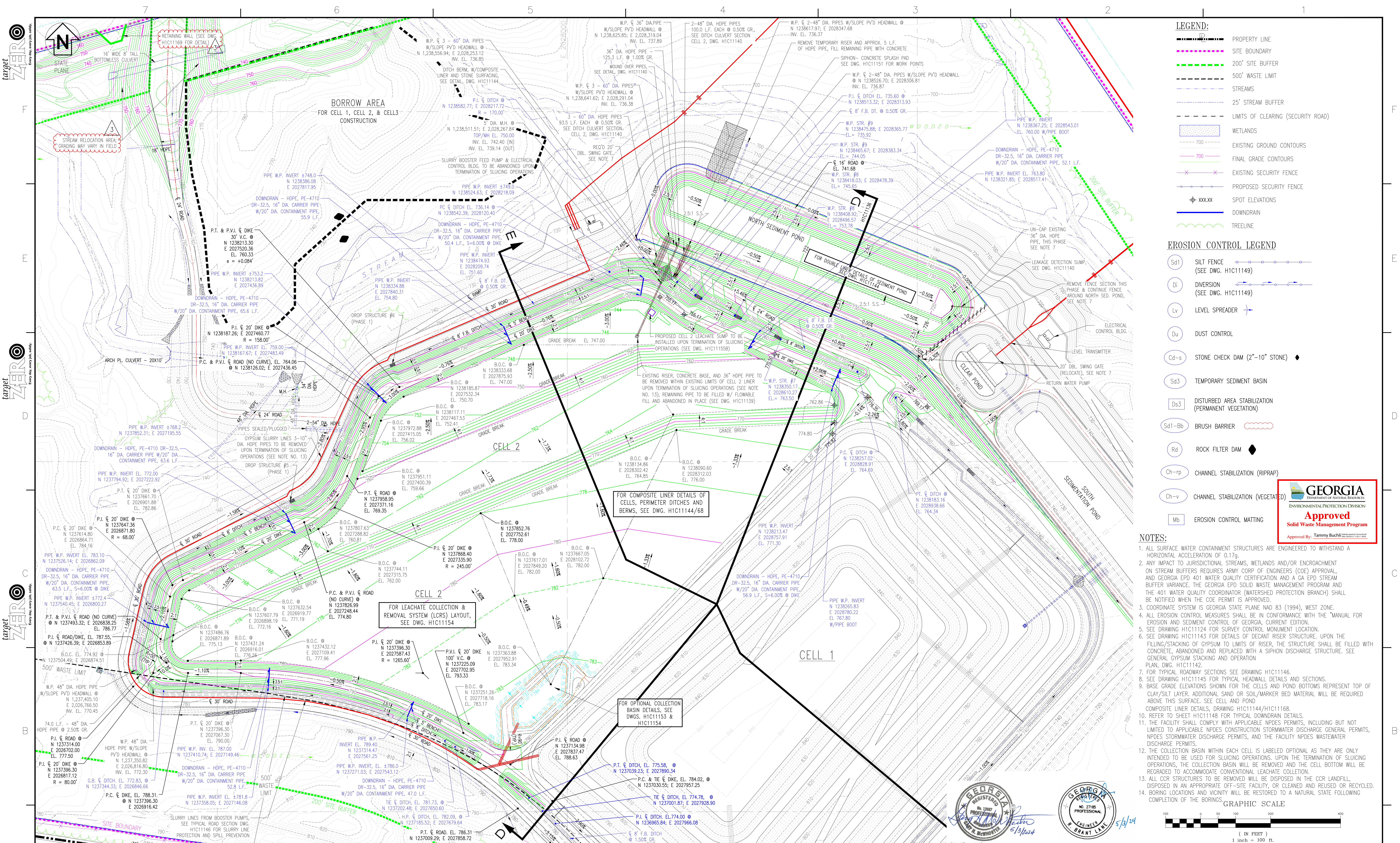
SCALE: 1"=100'

DRAWING NUMBER: **H1C11126**

SHEET: 1

CONT'D: 2

REV: 2

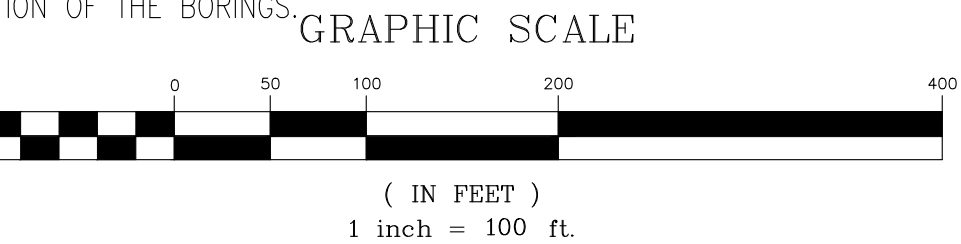


- LEGEND:**
- PROPERTY LINE
 - SITE BOUNDARY
 - 200' SITE BUFFER
 - 500' WASTE LIMIT
 - STREAMS
 - 25' STREAM BUFFER
 - LIMITS OF CLEARING (SECURITY ROAD)
 - WETLANDS
 - EXISTING GROUND CONTOURS
 - FINAL GRADE CONTOURS
 - EXISTING SECURITY FENCE
 - PROPOSED SECURITY FENCE
 - SPOT ELEVATIONS
 - DOWNDRAIN
 - TREELINE

- EROSION CONTROL LEGEND**
- Sd1 SILT FENCE (SEE DWG. H1C11149)
 - Di DIVERSION (SEE DWG. H1C11149)
 - Lv LEVEL SPREADER
 - Du DUST CONTROL
 - Cd-s STONE CHECK DAM (2"-10" STONE)
 - Sd3 TEMPORARY SEDIMENT BASIN
 - Ds3 DISTURBED AREA STABILIZATION (PERMANENT VEGETATION)
 - Sd1-Bb BRUSH BARRIER
 - Rd ROCK FILTER DAM
 - Ch-rp CHANNEL STABILIZATION (RIPRAP)
 - Ch-v CHANNEL STABILIZATION (VEGETATED)
 - Mb EROSION CONTROL MATTING



- NOTES:**
- ALL SURFACE WATER CONTAINMENT STRUCTURES ARE ENGINEERED TO WITHSTAND A HORIZONTAL ACCELERATION OF 0.1g.
 - ANY IMPACT TO JURISDICTIONAL STREAMS, WETLANDS AND/OR ENCROACHMENT ON STREAM BUFFERS REQUIRES ARMY CORP OF ENGINEERS (COE) APPROVAL, AND GEORGIA EPD 401 WATER QUALITY CERTIFICATION AND A GA EPD STREAM BUFFER VARIANCE. THE GEORGIA EPD SOLID WASTE MANAGEMENT PROGRAM AND THE 401 WATER QUALITY COORDINATOR (WATERSHED PROTECTION BRANCH) SHALL BE NOTIFIED WHEN THE COE PERMIT IS APPROVED.
 - COORDINATE SYSTEM IS GEORGIA STATE PLANE NAD 83 (1994), WEST ZONE.
 - ALL EROSION CONTROL MEASURES SHALL BE IN CONFORMANCE WITH THE "MANUAL FOR EROSION AND SEDIMENT CONTROL OF GEORGIA, CURRENT EDITION.
 - SEE DRAWING H1C1124 FOR SURVEY CONTROL MONUMENT LOCATION.
 - SEE DRAWING H1C1143 FOR DETAILS OF DECANT RISER STRUCTURE. UPON THE FILLING/STACKING OF GYPSUM TO LIMITS OF RISER, THE STRUCTURE SHALL BE FILLED WITH CONCRETE, ABANDONED AND REPLACED WITH A SIPHON DISCHARGE STRUCTURE. SEE GENERAL GYPSUM STACKING AND OPERATION PLAN, DWG. H1C1142.
 - FOR TYPICAL ROADWAY SECTIONS SEE DRAWING H1C1144.
 - SEE DRAWING H1C1145 FOR TYPICAL HEADWALL DETAILS AND SECTIONS.
 - BASE GRADE ELEVATIONS SHOWN FOR THE CELLS AND POND BOTTOMS REPRESENT TOP OF CLAY/SILT LAYER. ADDITIONAL SAND OR SOIL/MARKER BED MATERIAL WILL BE REQUIRED ABOVE THIS SURFACE. SEE CELL AND POND COMPOSITE LINER DETAILS, DRAWING H1C1144/H1C1168.
 - REFER TO SHEET H1C1148 FOR TYPICAL DOWNDRAIN DETAILS.
 - THE FACILITY SHALL COMPLY WITH APPLICABLE NPDES PERMITS, INCLUDING BUT NOT LIMITED TO APPLICABLE NPDES CONSTRUCTION STORMWATER DISCHARGE GENERAL PERMITS, NPDES STORMWATER DISCHARGE PERMITS, AND THE FACILITY NPDES WASTEWATER DISCHARGE PERMITS.
 - THE COLLECTION BASIN WITHIN EACH CELL IS LABELED OPTIONAL AS THEY ARE ONLY INTENDED TO BE USED FOR SLICING OPERATIONS. UPON THE TERMINATION OF SLICING OPERATIONS, THE COLLECTION BASIN WILL BE REMOVED AND THE CELL BOTTOM WILL BE REGRADED TO ACCOMMODATE CONVENTIONAL LEACHATE COLLECTION.
 - ALL CCR STRUCTURES TO BE REMOVED WILL BE DISPOSED IN THE CCR LANDFILL, DISPOSED IN AN APPROPRIATE OFF-SITE FACILITY, OR CLEANED AND REUSED OR RECYCLED.
 - BORING LOCATIONS AND VICINITY WILL BE RESTORED TO A NATURAL STATE FOLLOWING COMPLETION OF THE BORINGS.



REVISION	DATE	REVISION	DATE	REVISION	DATE	REVISION	DATE	REVISION	DATE	REVISION	DATE	REVISION	DATE	REVISION	DATE														
REVISION 0	DATE 09-23-2022	REVISION 1	DATE 10-10-2023	REVISION 2	DATE 01-08-2024	REVISION 3	DATE 05-03-2024	REVISION 4	DATE 05-03-2024	REVISION 5	DATE 05-03-2024	REVISION 6	DATE 05-03-2024	REVISION 7	DATE 05-03-2024														
CCR LF PERMIT APPLICATION [BY HHNT, INC.]		REVISED PROPERTY BUFFER AND NORTHERN BUFFER IMPACTS [BY HHNT, INC.]		ADD LEACHATE SUMP AND CONVENTIONAL CCR PLACEMENT MODIFICATIONS [BY HHNT, INC.]		STREAM RELOCATION GRADING MODIFICATION TO INCLUDE RETAINING WALL [BY HHNT, INC.]		STREAM RELOCATION GRADING MODIFICATION TO INCLUDE RETAINING WALL [BY HHNT, INC.]		STREAM RELOCATION GRADING MODIFICATION TO INCLUDE RETAINING WALL [BY HHNT, INC.]		STREAM RELOCATION GRADING MODIFICATION TO INCLUDE RETAINING WALL [BY HHNT, INC.]		STREAM RELOCATION GRADING MODIFICATION TO INCLUDE RETAINING WALL [BY HHNT, INC.]															
BY	CHK'D	CIVL APPR	ELECT APPR	L/C APPR	MECH APPR	DISC MGR	BY	CHK'D	CIVL APPR	ELECT APPR	L/C APPR	MECH APPR	DISC MGR	BY	CHK'D	CIVL APPR	ELECT APPR	L/C APPR	MECH APPR	DISC MGR	BY	CHK'D	CIVL APPR	ELECT APPR	L/C APPR	MECH APPR	DISC MGR		
							RSW	RBL						RSW	RBL														

Southern Company Generation Engineering and Construction Services FOR

Georgia Power Company

PLANT WANSLEY
COAL COMBUSTION RESIDUALS (CCR) LANDFILL
CELL NO. 2 SITE DEVELOPMENT
BASE GRADING PLAN

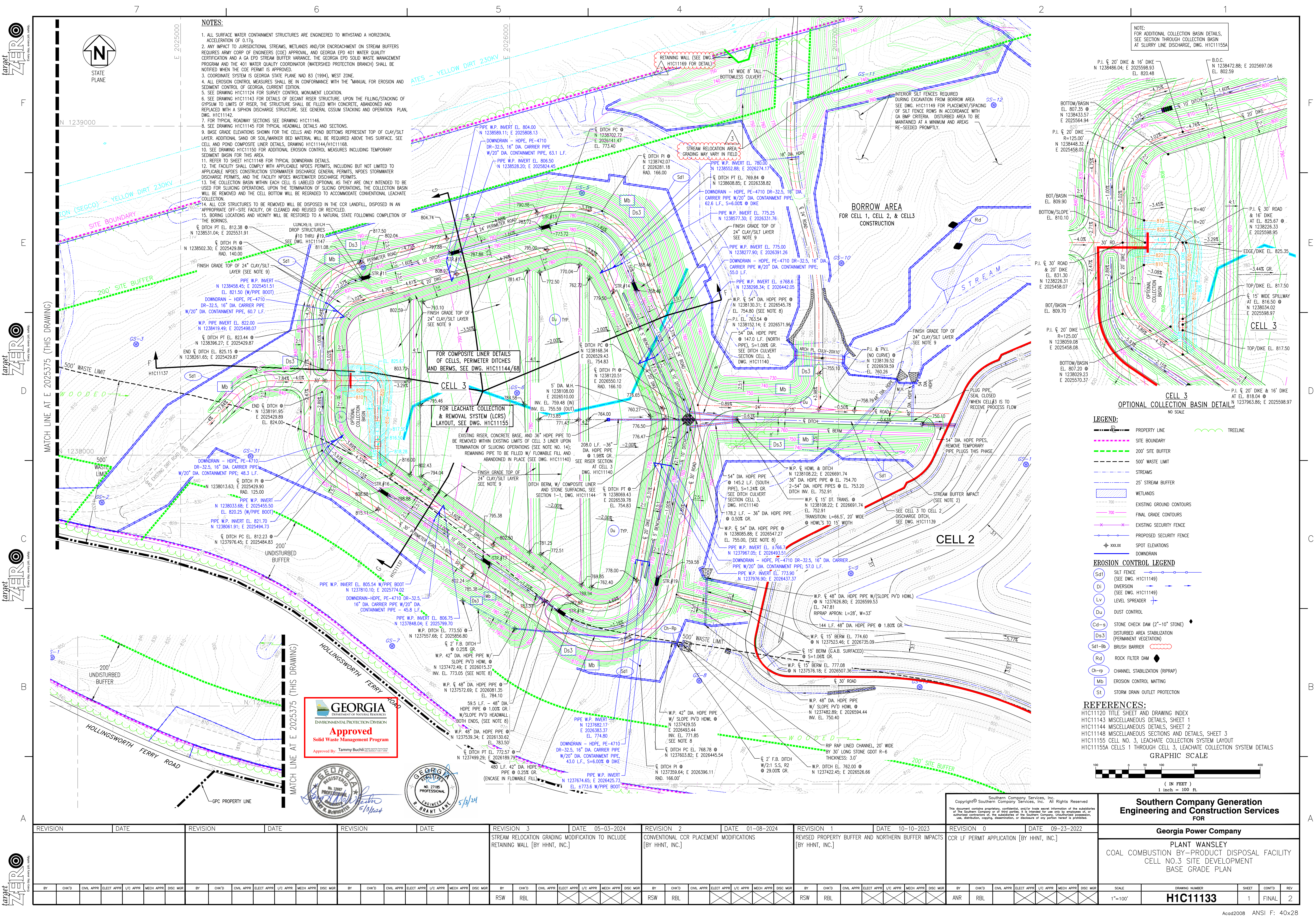
SCALE: 1"=100'

DRAWING NUMBER: **H1C11131**

SHEET: 1

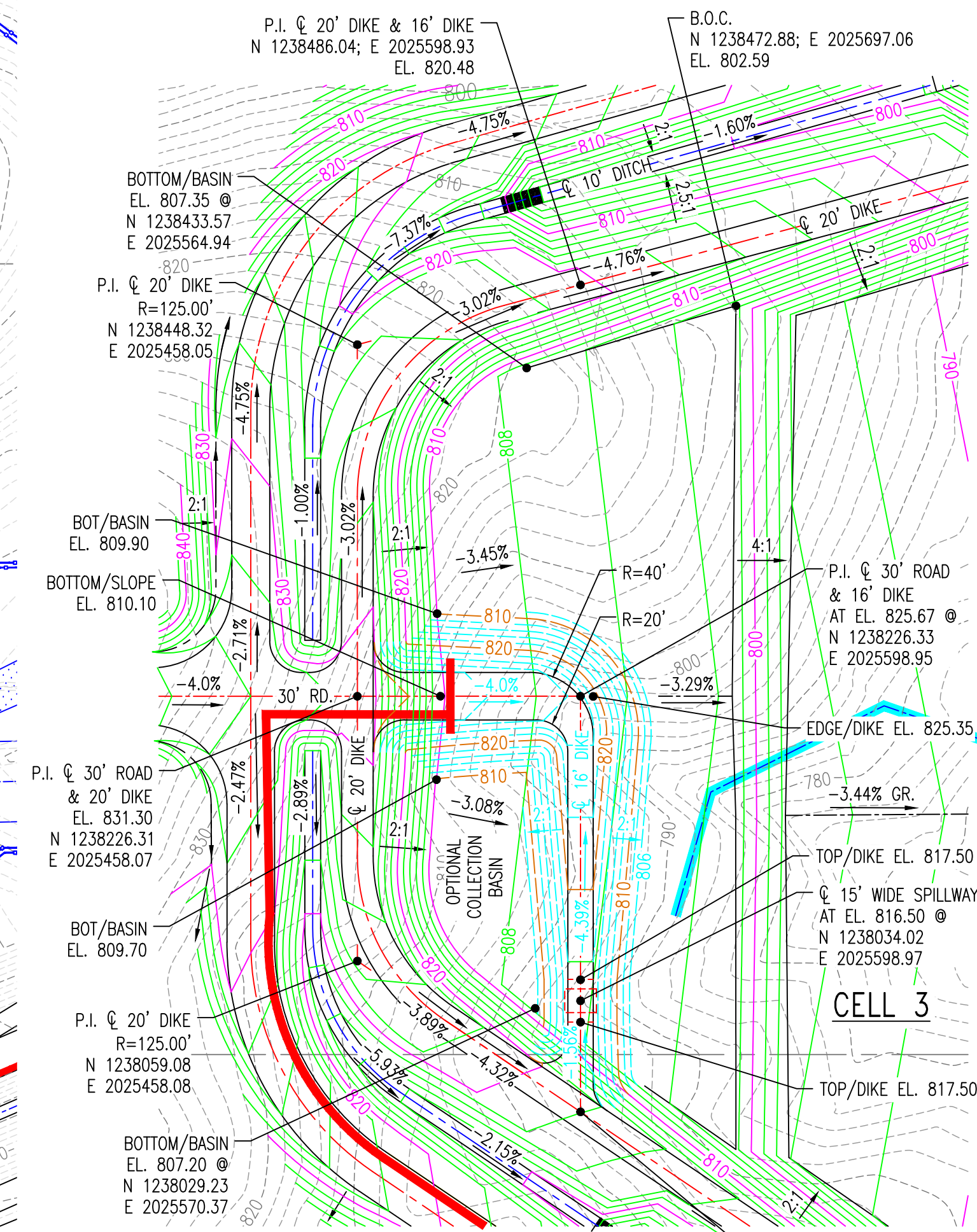
CONT'D: FINAL

REV: 2



- NOTES:**
1. ALL SURFACE WATER CONTAINMENT STRUCTURES ARE ENGINEERED TO WITHSTAND A HORIZONTAL ACCELERATION OF 0.17g.
 2. ANY IMPACT TO JURISDICTIONAL STREAMS, WETLANDS AND/OR ENCROACHMENT ON STREAM BUFFERS REQUIRES ARMY CORP OF ENGINEERS (COE) APPROVAL, AND GEORGIA EPD 401 WATER QUALITY CERTIFICATION AND A GA EPD STREAM BUFFER VARIANCE. THE GEORGIA EPD SOLID WASTE MANAGEMENT PROGRAM AND THE 401 WATER QUALITY COORDINATOR (WATERSHED PROTECTION BRANCH) SHALL BE NOTIFIED WHEN THE COE PERMIT IS APPROVED.
 3. COORDINATE SYSTEM IS GEORGIA STATE PLANE NAD 83 (1994), WEST ZONE.
 4. ALL EROSION CONTROL MEASURES SHALL BE IN CONFORMANCE WITH THE "MANUAL FOR EROSION AND SEDIMENT CONTROL OF GEORGIA, CURRENT EDITION.
 5. SEE DRAWING H1C1124 FOR SURVEY CONTROL MONUMENT LOCATION.
 6. SEE DRAWING H1C1143 FOR DETAILS OF DECANT RISER STRUCTURE. UPON THE FILLING/STACKING OF OPSIMUM TO LIMITS OF RISER, THE STRUCTURE SHALL BE FILLED WITH CONCRETE, ABANDONED AND REPLACED WITH A SIPHON DISCHARGE STRUCTURE. SEE GENERAL GSSUM STACKING AND OPERATION PLAN, DWG. H1C1142.
 7. FOR TYPICAL ROADWAY SECTIONS SEE DRAWING H1C1146.
 8. SEE DRAWING H1C1145 FOR TYPICAL HEADWALL DETAILS AND SECTIONS.
 9. BASE GRADE ELEVATIONS SHOWN FOR THE CELLS AND POND BOTTOMS REPRESENT TOP OF CLAY/SILT LAYER. ADDITIONAL SAND OR SOIL/MARKER BED MATERIAL WILL BE REQUIRED ABOVE THIS SURFACE. SEE CELL AND POND COMPOSITE LINER DETAILS, DRAWING H1C1144/H1C1168.
 10. SEE DRAWING H1C1150 FOR ADDITIONAL EROSION CONTROL MEASURES INCLUDING TEMPORARY SEDIMENT BASIN FOR THIS AREA.
 11. REFER TO SHEET H1C1148 FOR TYPICAL DOWNDRAIN DETAILS.
 12. THE FACILITY SHALL COMPLY WITH APPLICABLE NPDES PERMITS, INCLUDING BUT NOT LIMITED TO APPLICABLE NPDES CONSTRUCTION STORMWATER DISCHARGE GENERAL PERMITS, NPDES STORMWATER DISCHARGE PERMITS, AND THE FACILITY NPDES WASTEWATER DISCHARGE PERMITS.
 13. THE COLLECTION BASIN WITHIN EACH CELL IS LABELED OPTIONAL AS THEY ARE ONLY INTENDED TO BE USED FOR SLICING OPERATIONS. UPON THE TERMINATION OF SLICING OPERATIONS, THE COLLECTION BASIN WILL BE REMOVED AND THE CELL BOTTOM WILL BE REGRADED TO ACCOMMODATE CONVENTIONAL LEACHATE COLLECTION.
 14. ALL CCR STRUCTURES TO BE REMOVED WILL BE DISPOSED IN THE CCR LANDFILL, DISPOSED IN AN APPROPRIATE OFF-SITE FACILITY, OR CLEANED AND REUSED OR RECYCLED.
 15. BORING LOCATIONS AND VICINITY WILL BE RESTORED TO A NATURAL STATE FOLLOWING COMPLETION OF THE BORINGS.

NOTE:
FOR ADDITIONAL COLLECTION BASIN DETAILS,
SEE SECTION THROUGH COLLECTION BASIN
AT SLURRY LINE DISCHARGE, DWG. H1C1155A



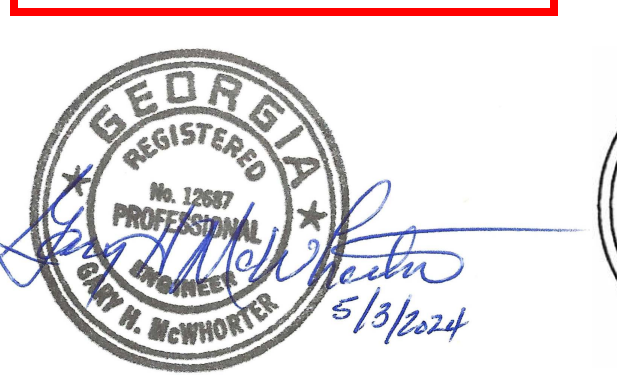
- LEGEND:**
- PROPERTY LINE
 - SITE BOUNDARY
 - 200' SITE BUFFER
 - 500' WASTE LIMIT
 - 25' STREAM BUFFER
 - WETLANDS
 - EXISTING GROUND CONTOURS
 - FINISH GRADE CONTOURS
 - EXISTING SECURITY FENCE
 - PROPOSED SECURITY FENCE
 - SPOT ELEVATIONS
 - DOWNDRAIN
 - TREELINE
- EROSION CONTROL LEGEND**
- Sd1 SILT FENCE (SEE DWG. H1C1149)
 - DI DIVERSION (SEE DWG. H1C1149)
 - Lv LEVEL SPREADER
 - Du DUST CONTROL
 - Cd-s STONE CHECK DAM (2"-10" STONE)
 - Ds3 DISTURBED AREA STABILIZATION (PERMANENT VEGETATION)
 - Sd1-Bb BRUSH BARRIER
 - Rd ROCK FILTER DAM
 - Ch-rp CHANNEL STABILIZATION (RIPRAP)
 - Mb EROSION CONTROL MATTING
 - St STORM DRAIN OUTLET PROTECTION

REFERENCES:

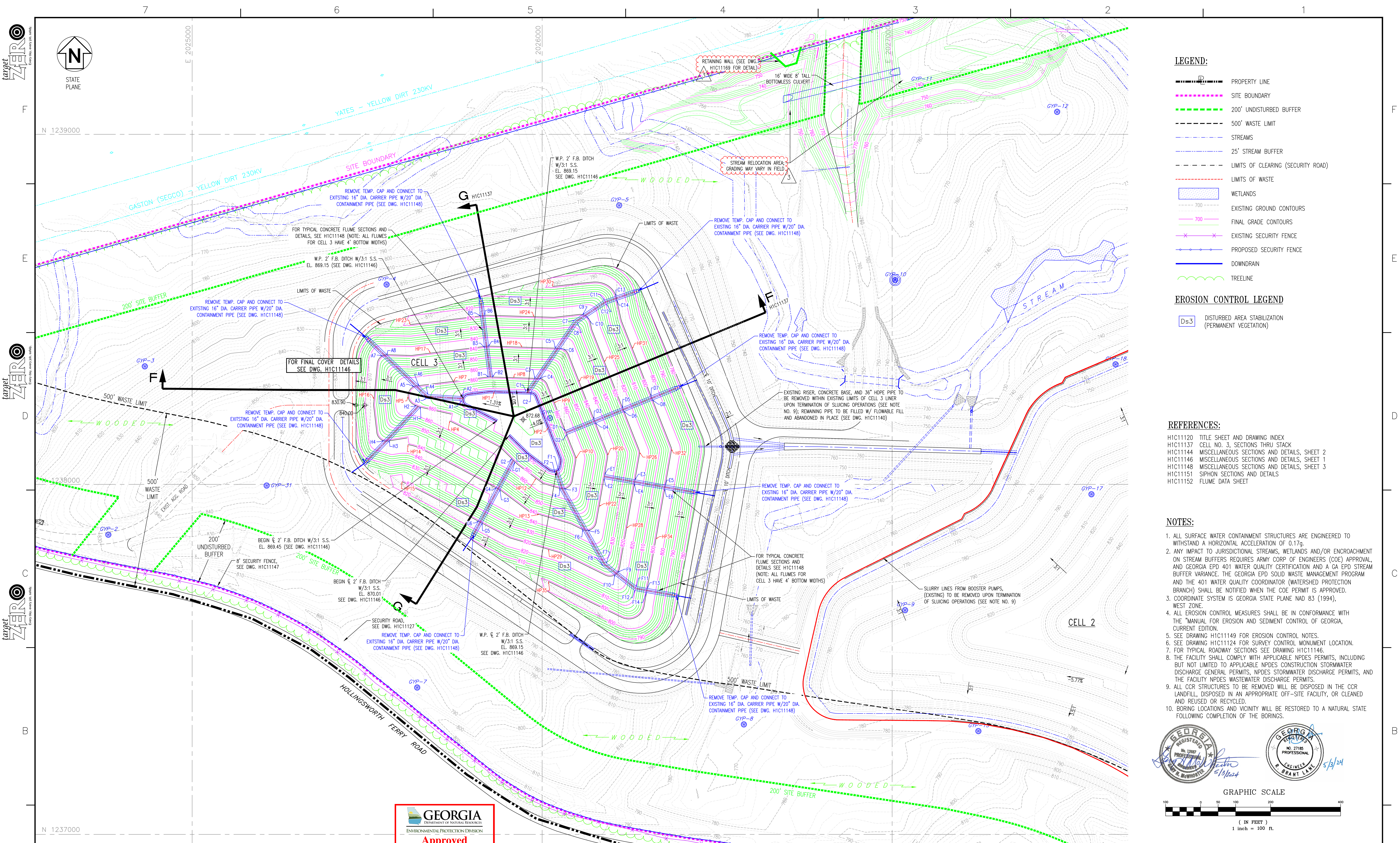
- H1C1120 TITLE SHEET AND DRAWING INDEX
- H1C1143 MISCELLANEOUS DETAILS, SHEET 1
- H1C1144 MISCELLANEOUS DETAILS, SHEET 2
- H1C1148 MISCELLANEOUS SECTIONS AND DETAILS, SHEET 3
- H1C1155 CELL NO. 3, LEACHATE COLLECTION SYSTEM LAYOUT
- H1C1155A CELLS 1 THROUGH CELL 3, LEACHATE COLLECTION SYSTEM DETAILS

GRAPHIC SCALE

(IN FEET)
1 inch = 100 ft



REVISION	DATE	REVISION	DATE	REVISION	DATE	REVISION	DATE	REVISION	DATE	REVISION	DATE	REVISION	DATE
REVISION 3	DATE 05-03-2024	REVISION 2	DATE 01-08-2024	REVISION 1	DATE 10-10-2023	REVISION 0	DATE 09-23-2022						
STREAM RELOCATION GRADING MODIFICATION TO INCLUDE RETAINING WALL [BY HHNT, INC.]		CONVENTIONAL CCR PLACEMENT MODIFICATIONS [BY HHNT, INC.]		REVISED PROPERTY BUFFER AND NORTHERN BUFFER IMPACTS [BY HHNT, INC.]		CCR LF PERMIT APPLICATION [BY HHNT, INC.]							
BY	CHK'D	CIVL APPR	ELECT APPR	L/C APPR	MECH APPR	DISC MGR	BY	CHK'D	CIVL APPR	ELECT APPR	L/C APPR	MECH APPR	DISC MGR
RSW	RBL						RSW	RBL					
SCALE	DRAWING NUMBER	SHEET	CONT'D	REV									
1"=100'	H1C1133	1	FINAL	2									

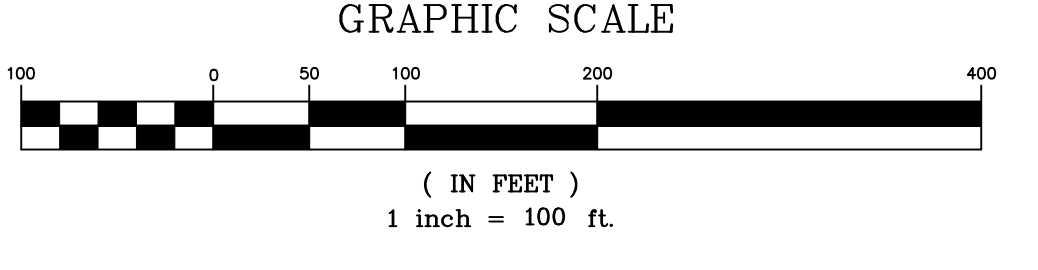


- LEGEND:**
- +—+—+— PROPERTY LINE
 - +—+—+— SITE BOUNDARY
 - +—+—+— 200' UNDISTURBED BUFFER
 - +—+—+— 500' WASTE LIMIT
 - +—+—+— STREAMS
 - +—+—+— 25' STREAM BUFFER
 - +—+—+— LIMITS OF CLEARING (SECURITY ROAD)
 - +—+—+— LIMITS OF WASTE
 - WETLANDS
 - EXISTING GROUND CONTOURS
 - 700
 - 700
 - EXISTING SECURITY FENCE
 - PROPOSED SECURITY FENCE
 - DOWNDRAIN
 - TREELINE

- EROSION CONTROL LEGEND**
- Ds3 DISTURBED AREA STABILIZATION (PERMANENT VEGETATION)

- REFERENCES:**
- H1C1120 TITLE SHEET AND DRAWING INDEX
 - H1C1137 CELL NO. 3, SECTIONS THRU STACK
 - H1C1144 MISCELLANEOUS SECTIONS AND DETAILS, SHEET 2
 - H1C1146 MISCELLANEOUS SECTIONS AND DETAILS, SHEET 1
 - H1C1148 MISCELLANEOUS SECTIONS AND DETAILS, SHEET 3
 - H1C1151 SIPHON SECTIONS AND DETAILS
 - H1C1152 FLUME DATA SHEET

- NOTES:**
1. ALL SURFACE WATER CONTAINMENT STRUCTURES ARE ENGINEERED TO WITHSTAND A HORIZONTAL ACCELERATION OF 0.17g.
 2. ANY IMPACT TO JURISDICTIONAL STREAMS, WETLANDS AND/OR ENCROACHMENT ON STREAM BUFFERS REQUIRES ARMY CORP OF ENGINEERS (COE) APPROVAL, AND GEORGIA EPD 401 WATER QUALITY CERTIFICATION AND A GA EPD STREAM BUFFER VARIANCE. THE GEORGIA EPD SOLID WASTE MANAGEMENT PROGRAM AND THE 401 WATER QUALITY COORDINATOR (WATERSHED PROTECTION BRANCH) SHALL BE NOTIFIED WHEN THE COE PERMIT IS APPROVED.
 3. COORDINATE SYSTEM IS GEORGIA STATE PLANE NAD 83 (1994), WEST ZONE.
 4. ALL EROSION CONTROL MEASURES SHALL BE IN CONFORMANCE WITH THE "MANUAL FOR EROSION AND SEDIMENT CONTROL OF GEORGIA, CURRENT EDITION.
 5. SEE DRAWING H1C1149 FOR EROSION CONTROL NOTES.
 6. SEE DRAWING H1C1124 FOR SURVEY CONTROL MONUMENT LOCATION.
 7. FOR TYPICAL ROADWAY SECTIONS SEE DRAWING H1C1146.
 8. THE FACILITY SHALL COMPLY WITH APPLICABLE NPDES PERMITS, INCLUDING BUT NOT LIMITED TO APPLICABLE NPDES CONSTRUCTION STORMWATER DISCHARGE GENERAL PERMITS, NPDES STORMWATER DISCHARGE PERMITS, AND THE FACILITY NPDES WASTEWATER DISCHARGE PERMITS.
 9. ALL CCR STRUCTURES TO BE REMOVED WILL BE DISPOSED IN THE CCR LANDFILL, DISPOSED IN AN APPROPRIATE OFF-SITE FACILITY, OR CLEANED AND REUSED OR RECYCLED.
 10. BORING LOCATIONS AND VICINITY WILL BE RESTORED TO A NATURAL STATE FOLLOWING COMPLETION OF THE BORINGS.



REVISION	DATE	REVISION	DATE	REVISION	DATE	REVISION 3	DATE	REVISION 2	DATE	REVISION 1	DATE	REVISION 0	DATE	
						STREAM RELOCATION GRADING MODIFICATION TO INCLUDE RETAINING WALL [BY HHNT, INC.]	05-03-2024	ADD LEACHATE SUMP AND CONVENTIONAL CCR PLACEMENT MODIFICATIONS [BY HHNT, INC.]	01-08-2024	REVISED PROPERTY BUFFER AND BUFFER IMPACTS [BY HHNT, INC.]	10-10-2023	CCR LF PERMIT APPLICATION [BY HHNT, INC.]	09-23-2022	
BY	CHK'D	CIVL APPR	ELECT APPR	I/C APPR	MECH APPR	DISC MGR		BY	CHK'D	CIVL APPR	ELECT APPR	I/C APPR	MECH APPR	DISC MGR
							RSW	RBL						

Southern Company Generation Engineering and Construction Services FOR

Georgia Power Company

PLANT WANSLEY
COAL COMBUSTION BY-PRODUCT DISPOSAL FACILITY
CELL NO. 3
FINAL STACKING PLAN

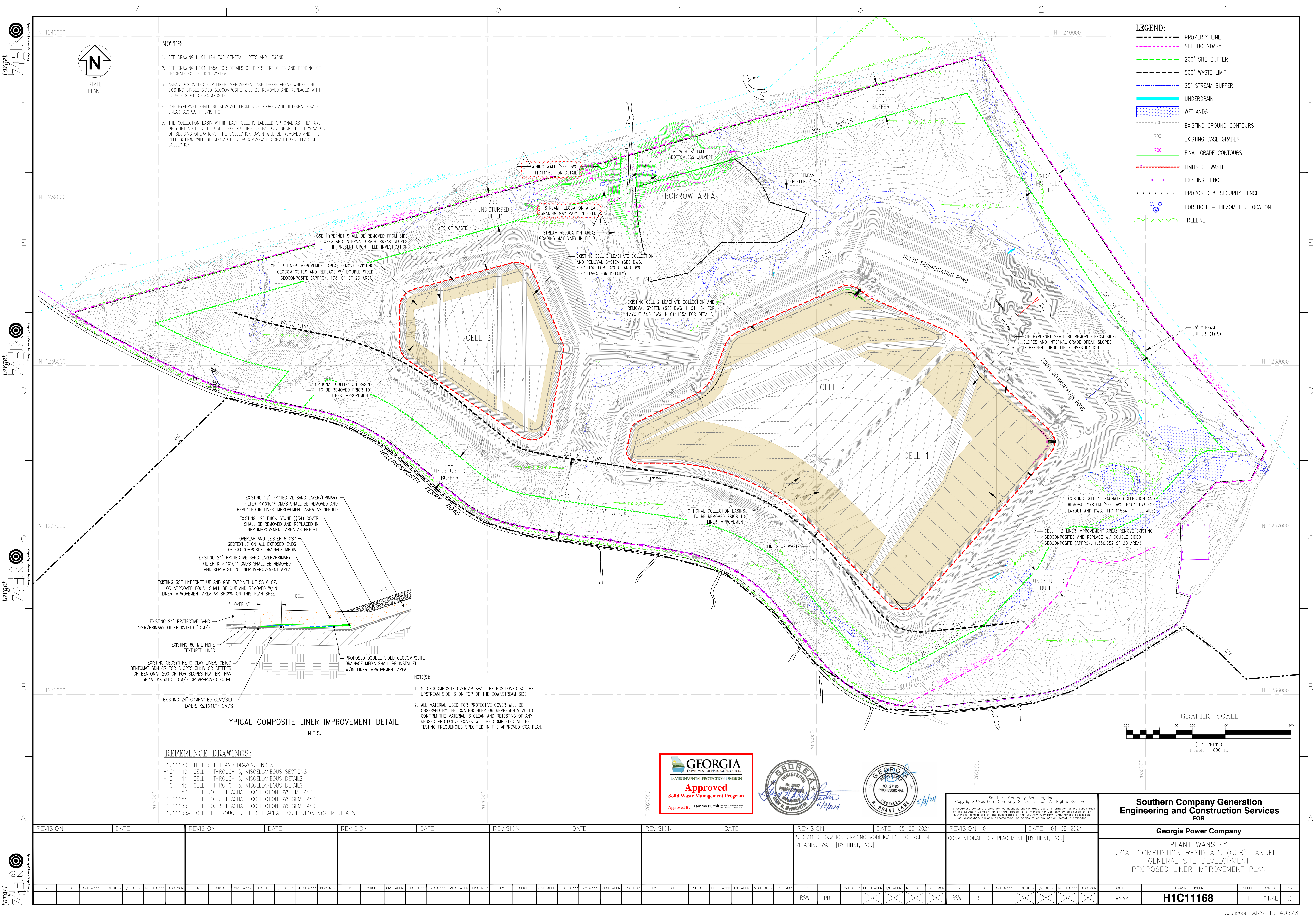
SCALE: 1"=100'

DRAWING NUMBER: **H1C1134**

SHEET: 1

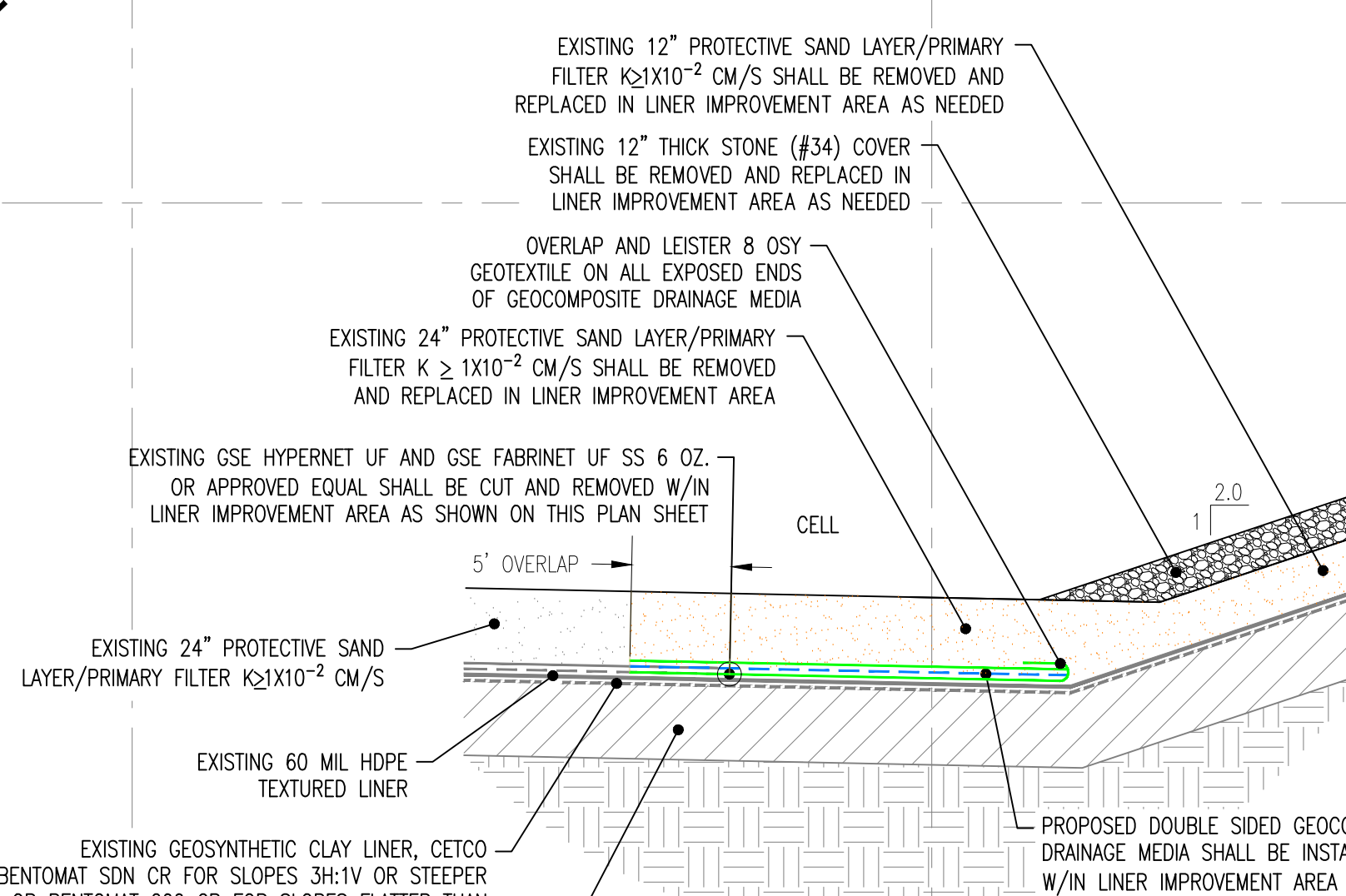
CONT'D: FINAL

REV: 2



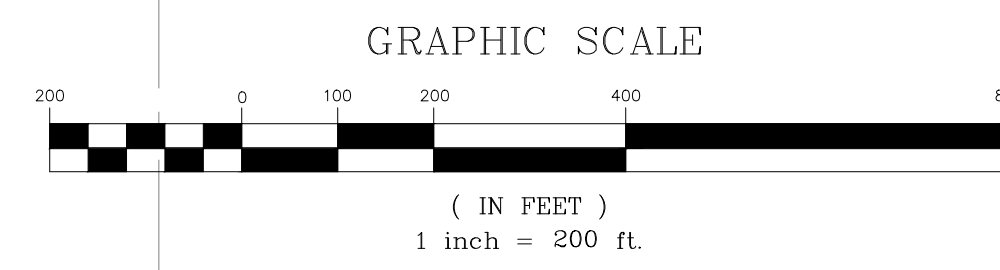
- NOTES:**
- SEE DRAWING H1C11124 FOR GENERAL NOTES AND LEGEND.
 - SEE DRAWING H1C11155A FOR DETAILS OF PIPES, TRENCHES AND BEDDING OF LEACHATE COLLECTION SYSTEM.
 - AREAS DESIGNATED FOR LINER IMPROVEMENT ARE THOSE AREAS WHERE THE EXISTING SINGLE SIDED GEOCOMPOSITE WILL BE REMOVED AND REPLACED WITH DOUBLE SIDED GEOCOMPOSITE.
 - GSE HYPERNET SHALL BE REMOVED FROM SIDE SLOPES AND INTERNAL GRADE BREAK SLOPES IF EXISTING.
 - THE COLLECTION BASIN WITHIN EACH CELL IS LABELED OPTIONAL AS THEY ARE ONLY INTENDED TO BE USED FOR SLICING OPERATIONS. UPON THE TERMINATION OF SLICING OPERATIONS, THE COLLECTION BASIN WILL BE REMOVED AND THE CELL BOTTOM WILL BE REGRADED TO ACCOMMODATE CONVENTIONAL LEACHATE COLLECTION.

- LEGEND:**
- PROPERTY LINE
 - SITE BOUNDARY
 - 200' SITE BUFFER
 - 500' WASTE LIMIT
 - 25' STREAM BUFFER
 - UNDERDRAIN
 - WETLANDS
 - EXISTING GROUND CONTOURS
 - EXISTING BASE GRADES
 - FINAL GRADE CONTOURS
 - LIMITS OF WASTE
 - EXISTING FENCE
 - PROPOSED 8' SECURITY FENCE
 - BOREHOLE - PIEZOMETER LOCATION
 - TREELINE



- NOTE(S):**
- 5' GEOCOMPOSITE OVERLAP SHALL BE POSITIONED SO THE UPSTREAM SIDE IS ON TOP OF THE DOWNSTREAM SIDE.
 - ALL MATERIAL USED FOR PROTECTIVE COVER WILL BE OBSERVED BY THE CQA ENGINEER OR REPRESENTATIVE TO CONFIRM THE MATERIAL IS CLEAN AND RETESTING OF ANY REUSED PROTECTIVE COVER WILL BE COMPLETED AT THE TESTING FREQUENCIES SPECIFIED IN THE APPROVED CQA PLAN.

- REFERENCE DRAWINGS:**
- H1C11120 TITLE SHEET AND DRAWING INDEX
 - H1C11140 CELL 1 THROUGH 3, MISCELLANEOUS SECTIONS
 - H1C11144 CELL 1 THROUGH 3, MISCELLANEOUS DETAILS
 - H1C11145 CELL 1 THROUGH 3, MISCELLANEOUS DETAILS
 - H1C11153 CELL NO. 1, LEACHATE COLLECTION SYSTEM LAYOUT
 - H1C11154 CELL NO. 2, LEACHATE COLLECTION SYSTEM LAYOUT
 - H1C11155 CELL NO. 3, LEACHATE COLLECTION SYSTEM LAYOUT
 - H1C11155A CELL 1 THROUGH CELL 3, LEACHATE COLLECTION SYSTEM DETAILS



REVISION	DATE	REVISION	DATE	REVISION	DATE	REVISION	DATE	REVISION	DATE	REVISION	DATE	REVISION	DATE	REVISION	DATE	REVISION	DATE
										REVISION 1	05-03-2024	REVISION 0	01-08-2024				
										STREAM RELOCATION GRADING MODIFICATION TO INCLUDE RETAINING WALL [BY HHNT, INC.]		CONVENTIONAL CCR PLACEMENT [BY HHNT, INC.]					
BY	CHK'D	CIVL APPR	ELECT APPR	I/C APPR	MECH APPR	DISC MGR				BY	CHK'D	CIVL APPR	ELECT APPR	I/C APPR	MECH APPR	DISC MGR	
										RSW	RBL						

Southern Company Generation Engineering and Construction Services FOR

Georgia Power Company

PLANT WANSLEY
COAL COMBUSTION RESIDUALS (CCR) LANDFILL
GENERAL SITE DEVELOPMENT
PROPOSED LINER IMPROVEMENT PLAN

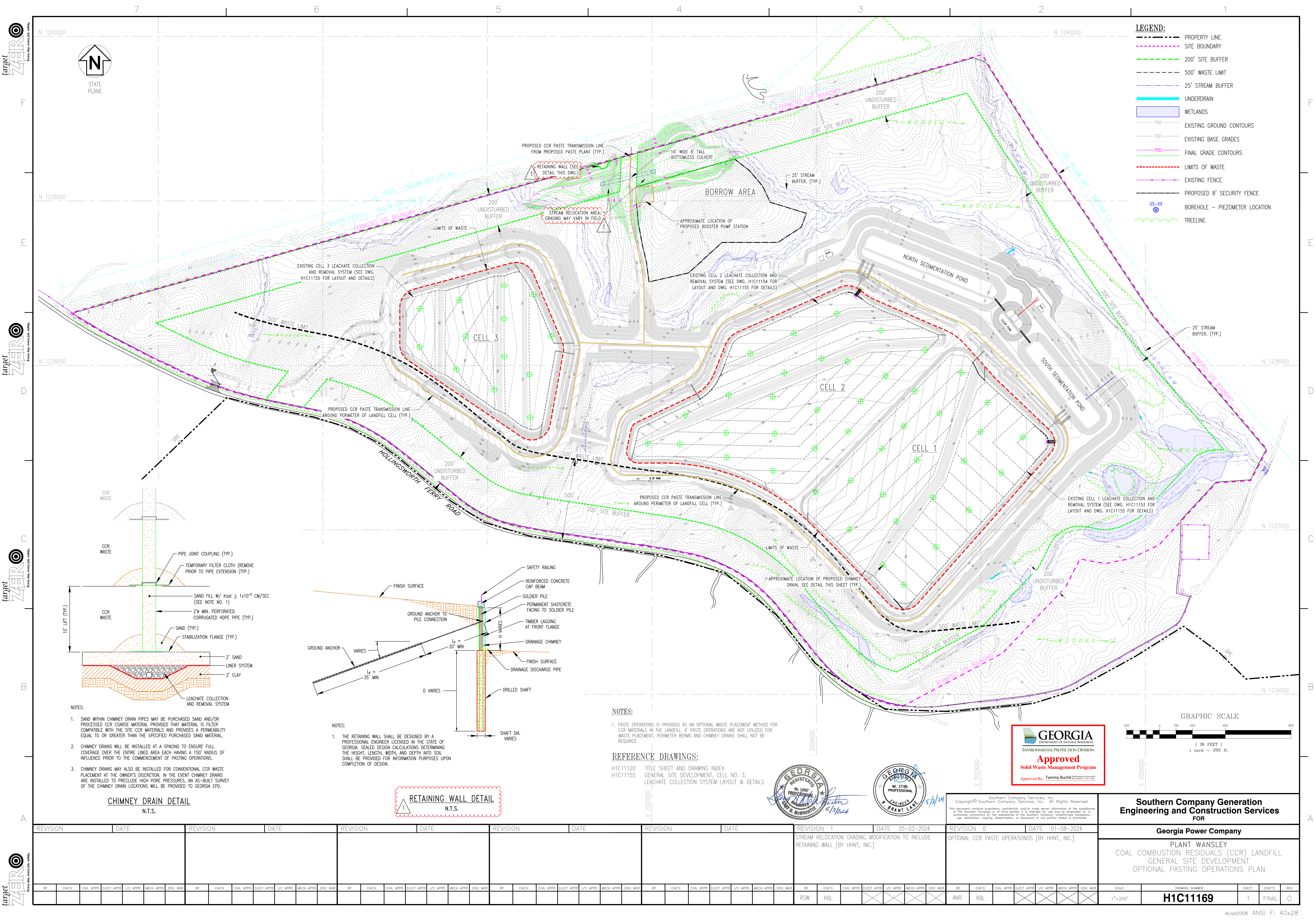
SCALE: 1"=200'

DRAWING NUMBER: **H1C11168**

SHEET: 1

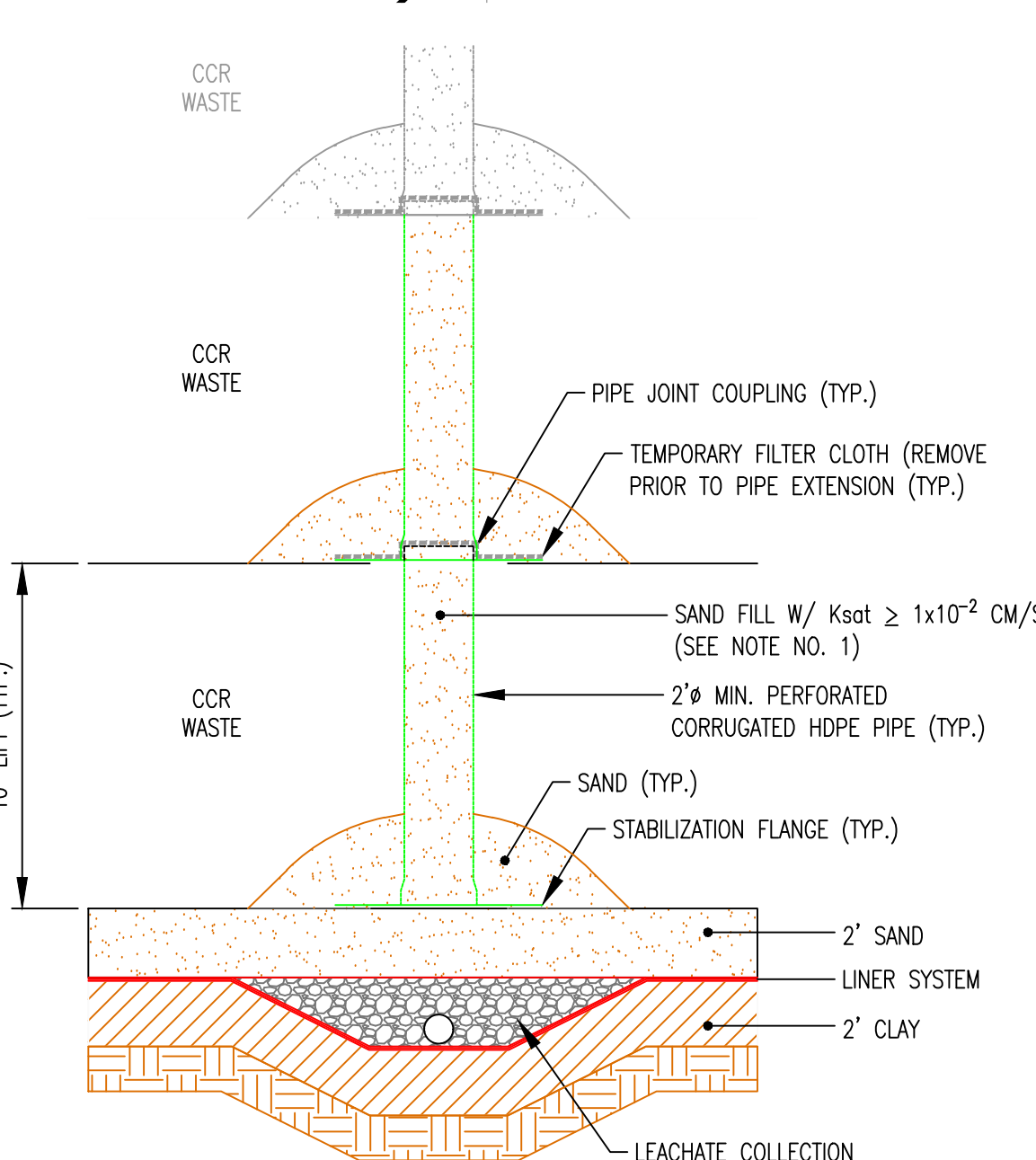
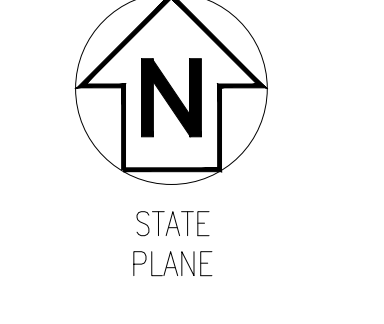
CONT'D: 0

REV: 0

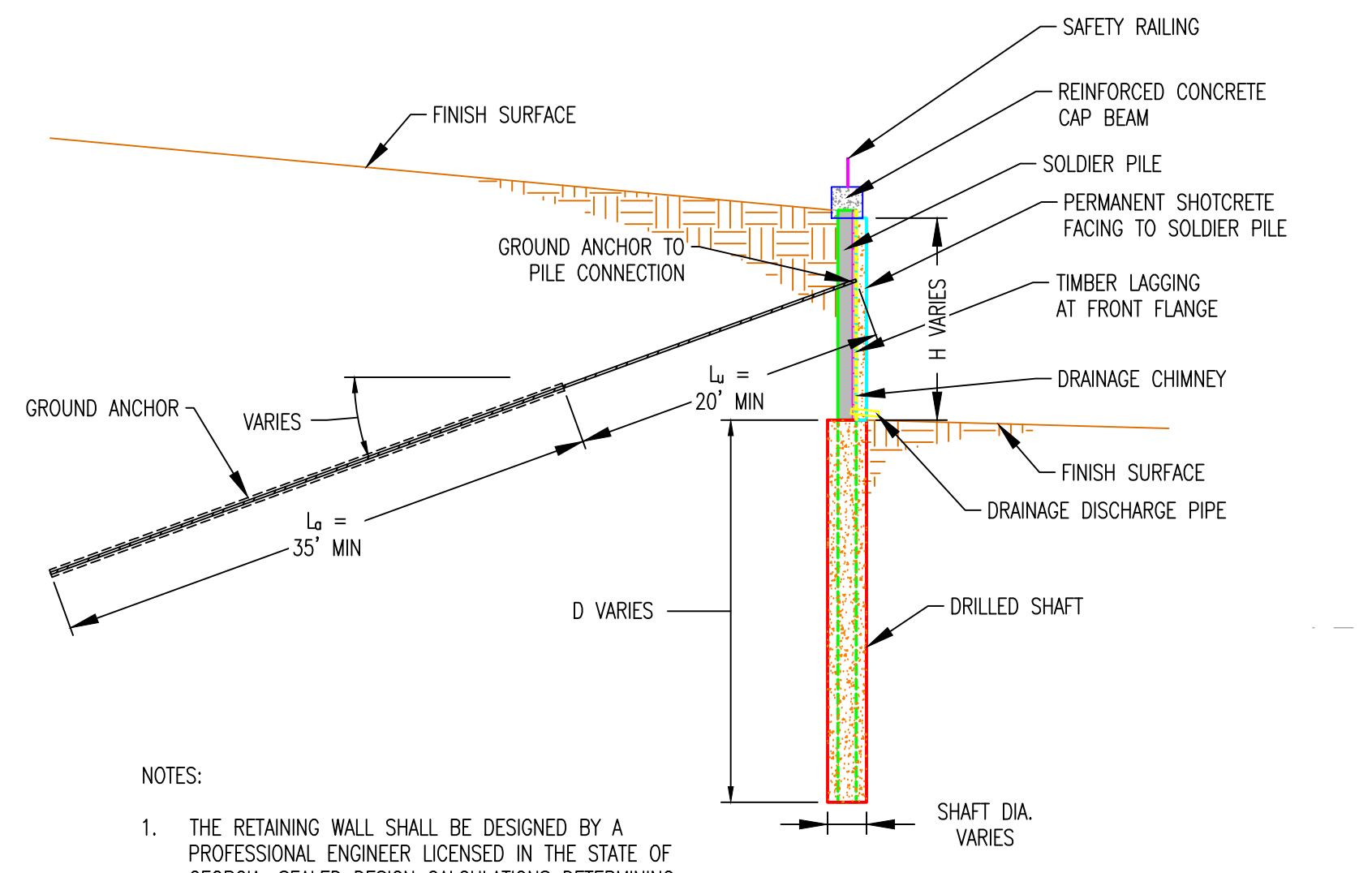


LEGEND:

- PROPERTY LINE
- SITE BOUNDARY
- 200' SITE BUFFER
- 500' WASTE LIMIT
- 25' STREAM BUFFER
- UNDERDRAIN
- WETLANDS
- EXISTING GROUND CONTOURS
- EXISTING BASE GRADES
- FINAL GRADE CONTOURS
- LIMITS OF WASTE
- EXISTING FENCE
- PROPOSED 8' SECURITY FENCE
- BORHOLE - PIEZOMETER LOCATION
- TREELINE



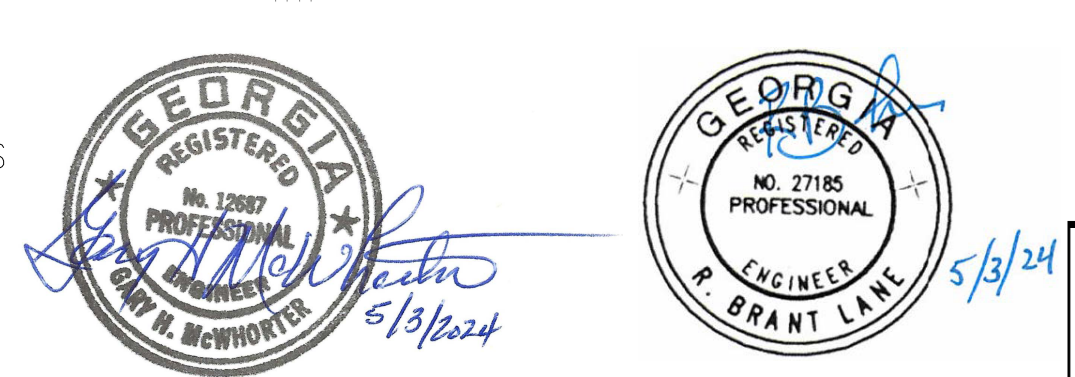
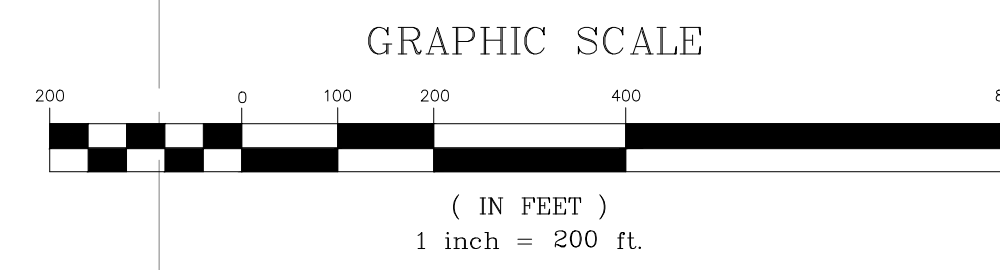
- NOTES:**
- SAND WITHIN CHIMNEY DRAIN PIPES MAY BE PURCHASED SAND AND/OR PROCESSED CCR COARSE MATERIAL PROVIDED THAT MATERIAL IS FILTER COMPATIBLE WITH THE SITE CCR MATERIALS AND PROVIDES A PERMEABILITY EQUAL TO OR GREATER THAN THE SPECIFIED PURCHASED SAND MATERIAL.
 - CHIMNEY DRAINS WILL BE INSTALLED AT A SPACING TO ENSURE FULL COVERAGE OVER THE ENTIRE LINED AREA EACH HAVING A 150' RADIUS OF INFLUENCE PRIOR TO THE COMMENCEMENT OF PASTING OPERATIONS.
 - CHIMNEY DRAINS MAY ALSO BE INSTALLED FOR CONVENTIONAL CCR WASTE PLACEMENT AT THE OWNER'S DISCRETION. IN THE EVENT CHIMNEY DRAINS ARE INSTALLED TO PRECLUDE HIGH PORE PRESSURES, AN AS-BUILT SURVEY OF THE CHIMNEY DRAIN LOCATIONS WILL BE PROVIDED TO GEORGIA EPD.



- NOTES:**
- THE RETAINING WALL SHALL BE DESIGNED BY A PROFESSIONAL ENGINEER LICENSED IN THE STATE OF GEORGIA. SEALED DESIGN CALCULATIONS DETERMINING THE HEIGHT, LENGTH, WIDTH AND DEPTH INTO SOIL SHALL BE PROVIDED FOR INFORMATION PURPOSES UPON COMPLETION OF DESIGN.

- NOTES:**
- PASTE OPERATIONS IS PROVIDED AS AN OPTIONAL WASTE PLACEMENT METHOD FOR CCR MATERIALS IN THE LANDFILL. IF PASTE OPERATIONS ARE NOT UTILIZED FOR WASTE PLACEMENT, PERIMETER BERMS AND CHIMNEY DRAINS SHALL NOT BE REQUIRED.

REFERENCE DRAWINGS:
 H1C11120 TITLE SHEET AND DRAWING INDEX
 H1C11155 GENERAL SITE DEVELOPMENT, CELL NO. 3, LEACHATE COLLECTION SYSTEM LAYOUT & DETAILS



CHIMNEY DRAIN DETAIL
N.T.S.

RETAINING WALL DETAIL
N.T.S.

REVISION	DATE	REVISION	DATE	REVISION	DATE	REVISION	DATE	REVISION	DATE	REVISION	DATE	REVISION	DATE					
								REVISION 1	05-03-2024	REVISION 0	01-08-2024	Southern Company Generation Engineering and Construction Services FOR Georgia Power Company						
STREAM RELOCATION GRADING MODIFICATION TO INCLUDE RETAINING WALL [BY HHNT, INC.]										OPTIONAL CCR PASTE OPERATIONS [BY HHNT, INC.]		PLANT WANSLEY COAL COMBUSTION RESIDUALS (CCR) LANDFILL GENERAL SITE DEVELOPMENT OPTIONAL PASTING OPERATIONS PLAN						
BY	CHK'D	CIVL APPR	ELECT APPR	I/C APPR	MECH APPR	DISC MGR	BY	CHK'D	CIVL APPR	ELECT APPR	I/C APPR	MECH APPR	DISC MGR	SCALE	DRAWING NUMBER	SHEET	CONT'D	REV
								RSW	RBL					1"=200'	H1C11169	1	FINAL	0