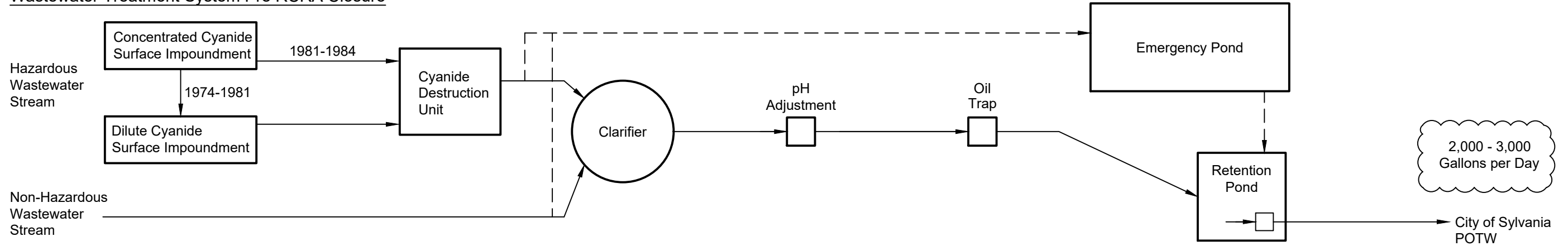
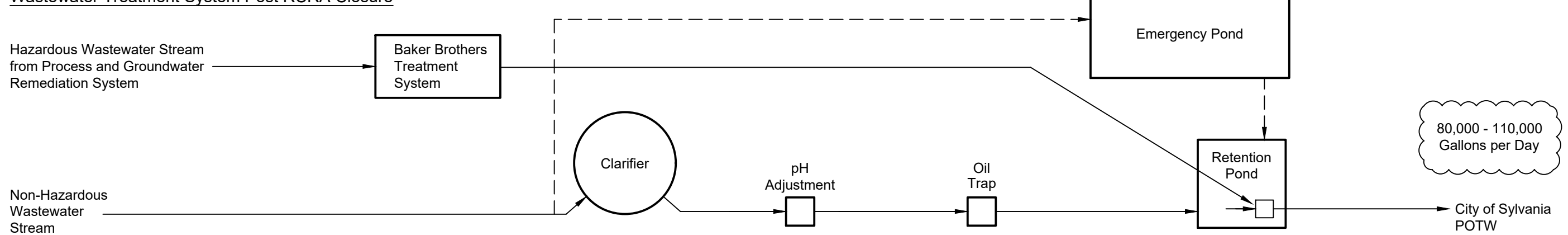


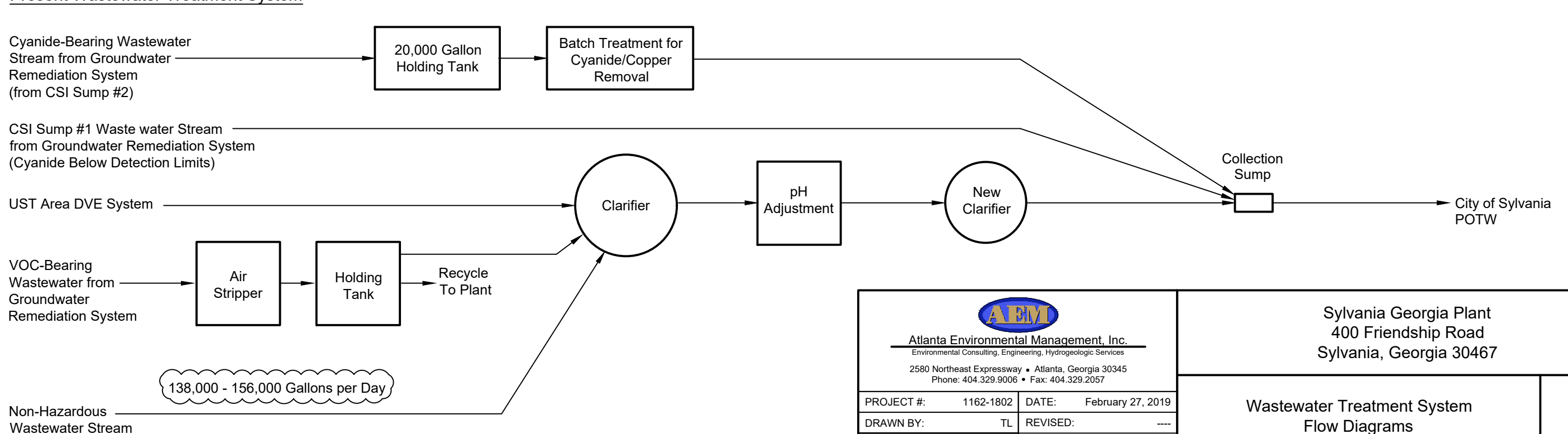
Wastewater Treatment System Pre RCRA Closure




Wastewater Treatment System Post RCRA Closure



Present Wastewater Treatment System



 <b>Atlanta Environmental Management, Inc.</b> Environmental Consulting, Engineering, Hydrogeologic Services 2580 Northeast Expressway • Atlanta, Georgia 30345 Phone: 404.329.9006 • Fax: 404.329.2057		Sylvania Georgia Plant 400 Friendship Road Sylvania, Georgia 30467	
PROJECT #:	1162-1802	DATE:	February 27, 2019
DRAWN BY:	TL	REVISED:	----
CHECKED BY:	MM	SCALE:	NTS
PROJECT MGR:	GI	PRINTED:	2/27/2019 2:28 PM
			Wastewater Treatment System Flow Diagrams
			Figure <b>B-3</b>

G:\DWG\1162-1802\Vol 1\BIB-03 Treatment