



GEORGIA

DEPARTMENT OF NATURAL RESOURCES

ENVIRONMENTAL PROTECTION DIVISION

Richard E. Dunn, Director

EPD Director's Office

2 Martin Luther King, Jr. Drive
Suite 1456, East Tower
Atlanta, Georgia 30334
404-656-4713

CATEGORICAL EXCLUSION DETERMINATION

Sanitary Sewer System Improvements
City of Thomaston, Georgia (Upson County)
GEFA Loan CW-2016-044

The Georgia Environmental Protection Division (EPD) has conducted a review of the above project in accordance with the State's Environmental Review Process (SERP). EPD has determined that this project is eligible for a categorical exclusion. Accordingly, no further environmental review is planned. The proposed project consists of rehabilitation of the sewer system trunk lines, portions of the sewage collection system and manholes, and existing lift stations. The project will also consist of rehabilitations to the City's two wastewater treatment facilities (Bell Creek and Town Branch WWTF). All work will take place within existing easements, and no changes to the capacity of the existing system will result from the improvements.

This project is eligible for a categorical exclusion because it meets the following specific criteria, outlined in the SERP: functional replacement of equipment and minor rehabilitation of existing facilities. Furthermore: the project will not create a new or relocate an existing discharge to surface or ground waters; the project will not substantially increase the volume of discharge or loading of pollutants; the project will not provide capacity to serve a population 30% greater than the existing population; the project will not have a significant effect on the quality of the human environment; the action will not directly or indirectly affect cultural resources, habitats of endangered or threatened species, or environmentally important natural resource areas; and the action is cost-effective and should cause no significant public controversy.

This determination becomes effective after thirty (30) days following its distribution by EPD. This exclusion may be revoked at any time if: 1) the project is altered and no longer meets the requirements of a categorical exclusion, 2) new evidence shows that serious environmental issues exist, or 3) a local, State or Federal law is being or may be violated. The information which supports this decision is on file with the Georgia Environmental Protection Division and is available for public scrutiny upon request. A copy of the proposed project documentation is also available for review at the Thomaston City Hall in Thomaston, GA.

All interested agencies, groups and persons supporting or disagreeing with this decision are invited to submit written comments, within thirty (30) days of the publish date of this notice to:

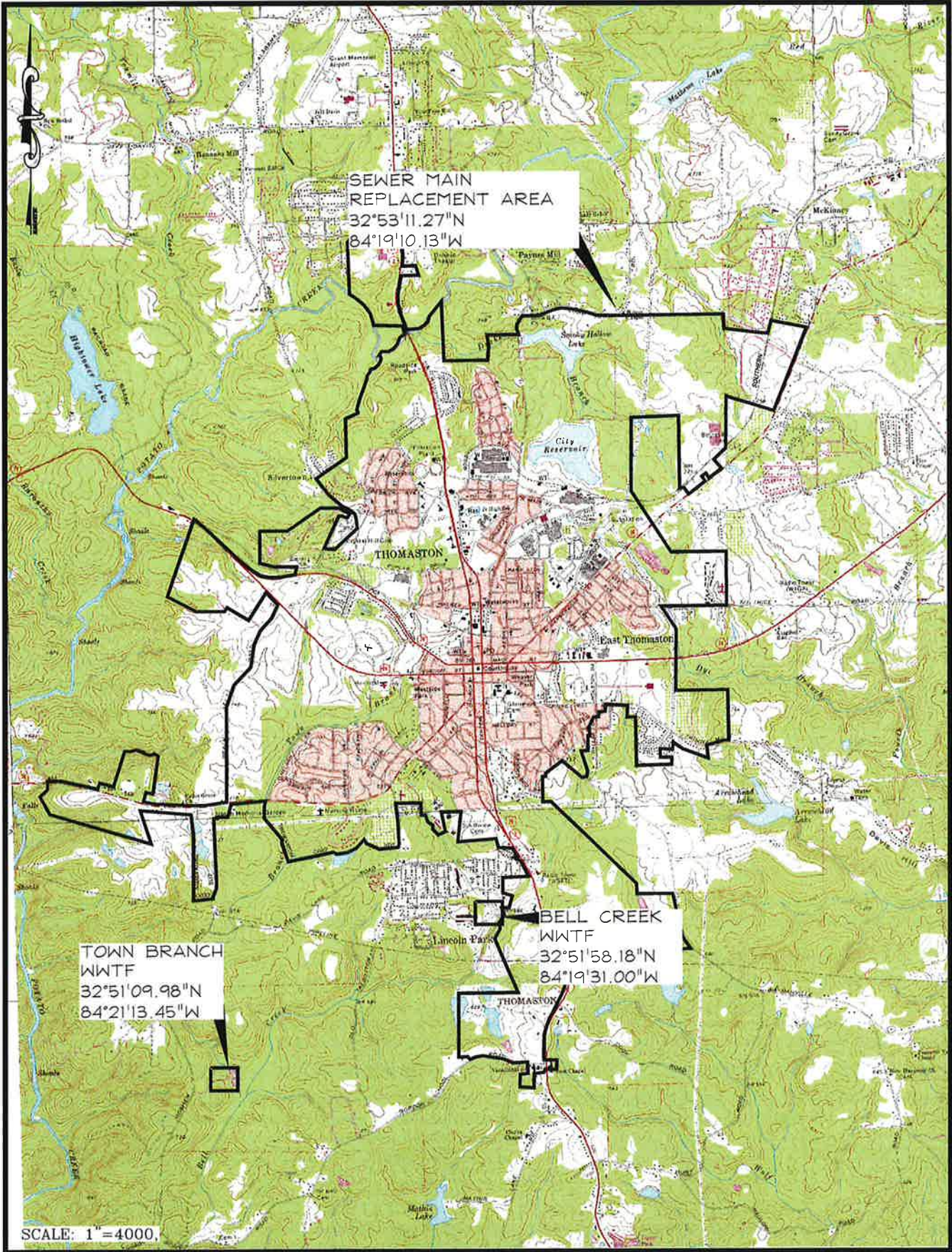
Georgia Environmental Protection Division
Mr. Hwan Cho
Wastewater Regulatory Program
2 Martin Luther King Jr. Drive, Suite 1152 East
Atlanta, Georgia 30334

Categorical Exclusion
GEFA Loan No. CW-2016-044
City of Thomaston
Page 2 of 2

After evaluating the comments received, EPD will make a final decision regarding approval of the project. No administrative action will be taken on the project for thirty (30) calendar days after publication of this Notice.

Publish Date: 9/15/17


Richard E. Dunn, Director
Environmental Protection Division



SEWER MAIN
REPLACEMENT AREA
32°53'11.27"N
84°19'10.13"W

TOWN BRANCH
WWTF
32°51'09.98"N
84°21'13.45"W

BELL CREEK
WWTF
32°51'58.18"N
84°19'31.00"W

SCALE: 1" = 4000'