

GEOLOGICAL SURVEY OF GEORGIA

W. S. YEATES, STATE GEOLOGIST

TOPOGRAPHIC MAP OF

CARTERSVILLE DISTRICT, GEORGIA

GEORGIA

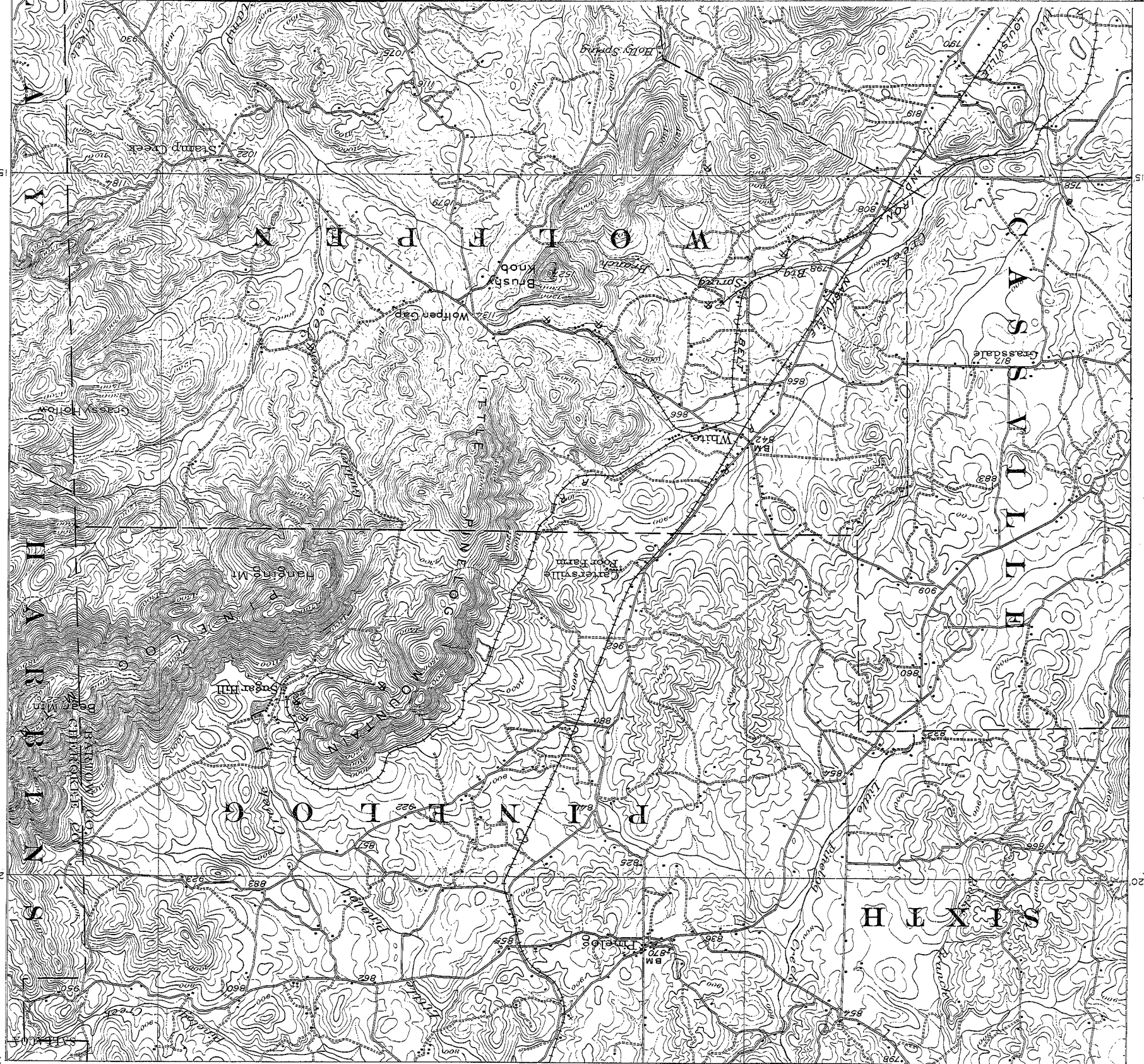
CARTERSVILLE SPECIAL MAP

84°38'43" 34°21'19"

U. S. GEOLOGICAL SURVEY

CHARLES D. WALCOTT, DIRECTOR

84°38'15" 34°21'19"





34°05'36" 84°38'15" ENGRAVED MAY 1903 BY U.S.G.S. 45° 40° 34°05'36" 84°38'43"

H.M. Wilson, Geographer in charge.  
 Topography by E. S. Ela, Geo. H. Guerdum and C. C. Bassett.  
 Triangulation by U. S. Coast and Geodetic Survey.  
 Surveyed in 1903 and 1905.

TRUE NORTH  
 MAGNETIC NORTH  
 APPROXIMATE MEAN DECLINATION 1903.

Scale  $\frac{1}{62500}$  Edition of Aug. 1906.

1 2 0 1 2 3 4 Miles  
 1 2 0 1 2 3 4 Kilometers

Contour interval 20 feet.  
 Datum is mean sea level.