



GEORGIA

DEPARTMENT OF NATURAL RESOURCES

ENVIRONMENTAL PROTECTION DIVISION

Richard E. Dunn, Director

EPD Director's Office

2 Martin Luther King, Jr. Drive
Suite 1456, East Tower
Atlanta, Georgia 30334
404-656-4713

CATEGORICAL EXCLUSION DETERMINATION
City of Blue Ridge Wastewater Treatment Plant Improvements
City of Blue Ridge (Fannin County)
GEFA Loan CW-2017-016

The Georgia Environmental Protection Division (EPD) has conducted a review of the above project in accordance with the State's Environmental Review Process (SERP). EPD has determined that this project is eligible for a categorical exclusion. Accordingly, no further environmental review is planned. The proposed project consists of the additions of a chemical coagulant system to bind excess mercury and copper into the waste activated sludge system and an effluent cooling technology at the wastewater treatment plant in Fannin County, Georgia. The project will allow the facility to achieve compliance with new permit effluent limits for mercury, copper, and temperature.

This project is eligible for a categorical exclusion because it meets the following specific criteria, outlined in the SERP: construction of new ancillary facilities adjacent to existing facilities that do not affect the capacity of the existing facility. Furthermore: the project will not create a new or relocate an existing discharge to surface or ground waters; the project will not substantially increase the volume of discharge or loading of pollutants; the project will not provide capacity to serve a population 30% greater than the existing population; the project will not have a significant effect on the quality of the human environment; the action will not directly or indirectly affect cultural resources, habitats of endangered or threatened species, or environmentally important natural resource areas; and the action is cost-effective and should cause no significant public controversy.

This determination becomes effective after thirty (30) days following its distribution by EPD. This exclusion may be revoked at any time if: 1) the project is altered and no longer meets the requirements of a categorical exclusion, 2) new evidence shows that serious environmental issues exist, or 3) a local, State or Federal law is being or may be violated. The information which supports this decision is on file with the Georgia Environmental Protection Division and is available for public scrutiny upon request. A copy of the proposed project documentation is also available for review at the City of Blue Ridge Town Hall in Fannin County, Georgia.

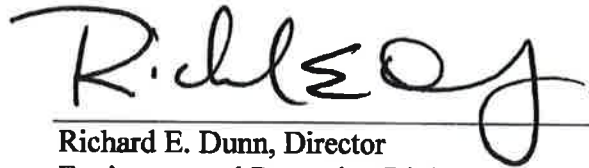
All interested agencies, groups and persons supporting or disagreeing with this decision are invited to submit written comments, within thirty (30) days of the publish date of this notice to:

Georgia Environmental Protection Division
Ms. Kelli-Ann Sottile
Wastewater Regulatory Program
2 Martin Luther King Jr. Drive, Suite 1152 East
Atlanta, Georgia 30334

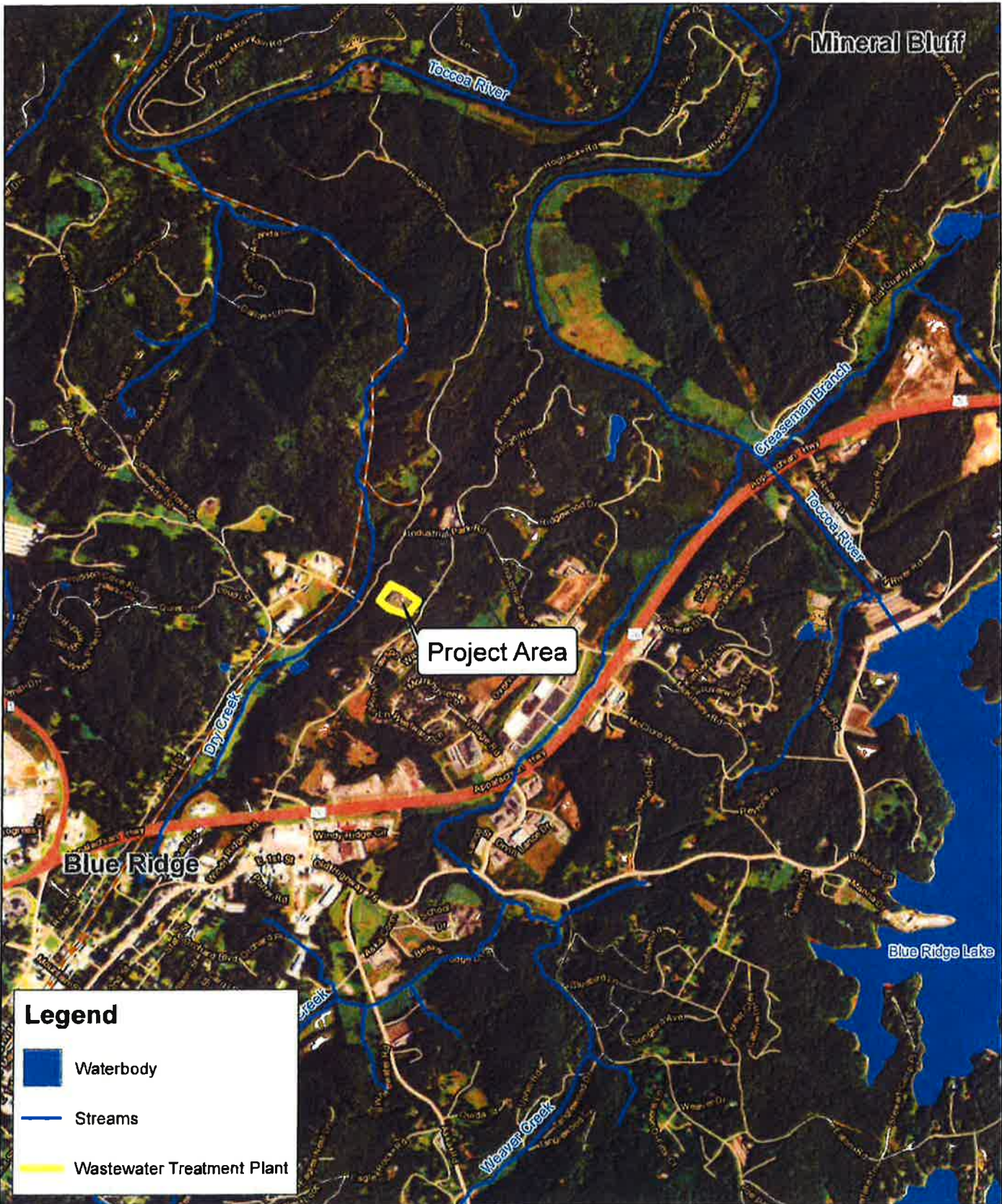
Categorical Exclusion
GEFA Loan No. CW-2017-016
City of Blue Ridge
Page 2 of 2

After evaluating the comments received, EPD will make a final decision regarding approval of the project. No administrative action will be taken on the project for thirty (30) calendar days after publication of this Notice.

Publish Date: 8/30/17

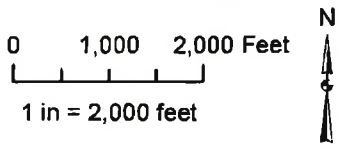
A handwritten signature in black ink, appearing to read "Richard E. Dunn". The signature is written in a cursive style with a large initial "R" and a long, sweeping tail.

Richard E. Dunn, Director
Environmental Protection Division



Legend

- Waterbody
- Streams
- Wastewater Treatment Plant



**FY 2018 GEFA SRF APPLICATION
 FOR THE
 CITY OF BLUE RIDGE
 FANNIN COUNTY, GEORGIA**

Carter & Sloope
 CONSULTING ENGINEERS
 ♦ MICH ♦ HOUST ♦ ATEN ♦ CAROL
111 WOODRIDGE WAY SUITE 100 CANNONVILLE GA 30115 770.477.8323 TEL: 770.477.7882 FAX