

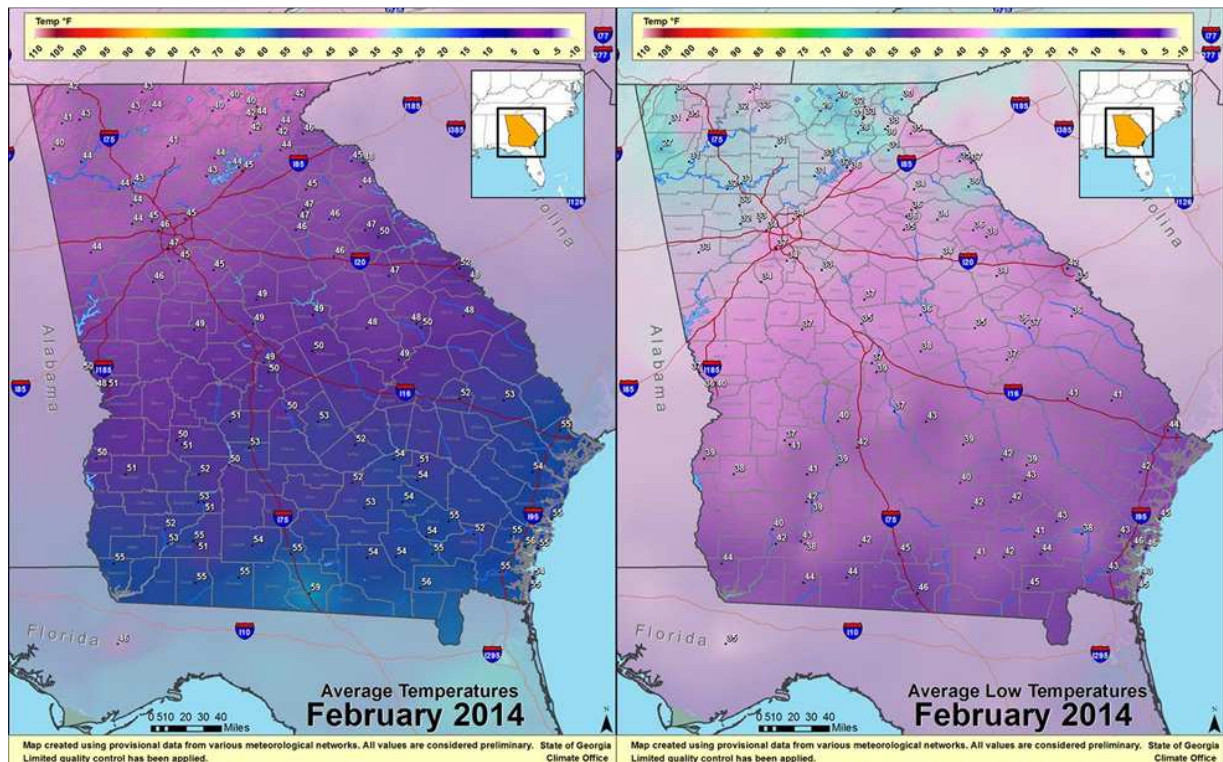
## 2014 February Climate Summary - Georgia

Nyasha Dunkley, *Deputy State Climatologist*

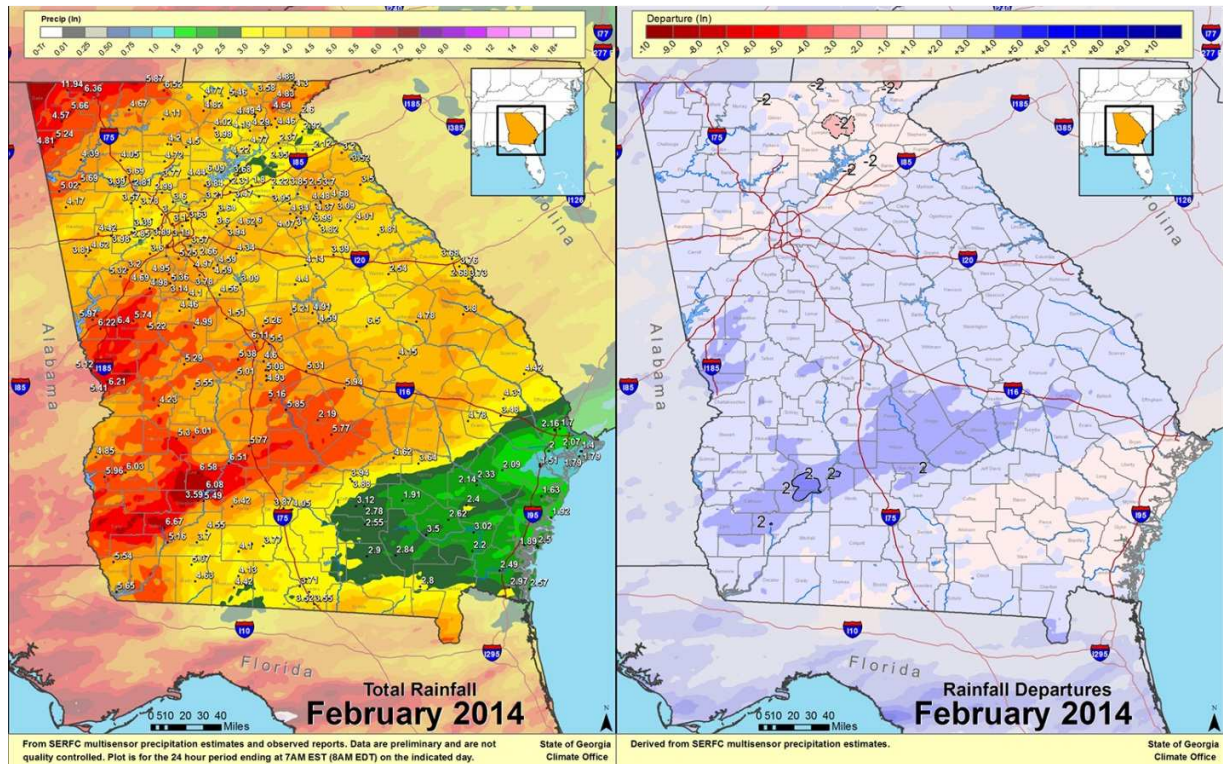
Sean Miller, *Service Climatologist*

State of Georgia Climate Office

The month of February proved to be relatively mild with regard to precipitation and temperature across the state. The average temperature of 49.8° for Georgia was 1.2° above the 20<sup>th</sup> century average of 48.6°, making it the warmest February since 2012. Most major climate sites across the state saw near-normal average temperatures. In spite of that, several record high temperature records were set throughout the month. A record high temperature of 74° was set in Atlanta on 2/2, which broke the old record of 73° set in 1986. A record high of 82° was set at Augusta on 2/20, tying the old record for the date of 82° set in 1991. Areas of South Georgia also experienced record warmth, as Valdosta set a new record daily maximum temperature on 2/20 with 85°. This is the second warmest reading ever recorded in Valdosta (period of record 1948-present) during February.

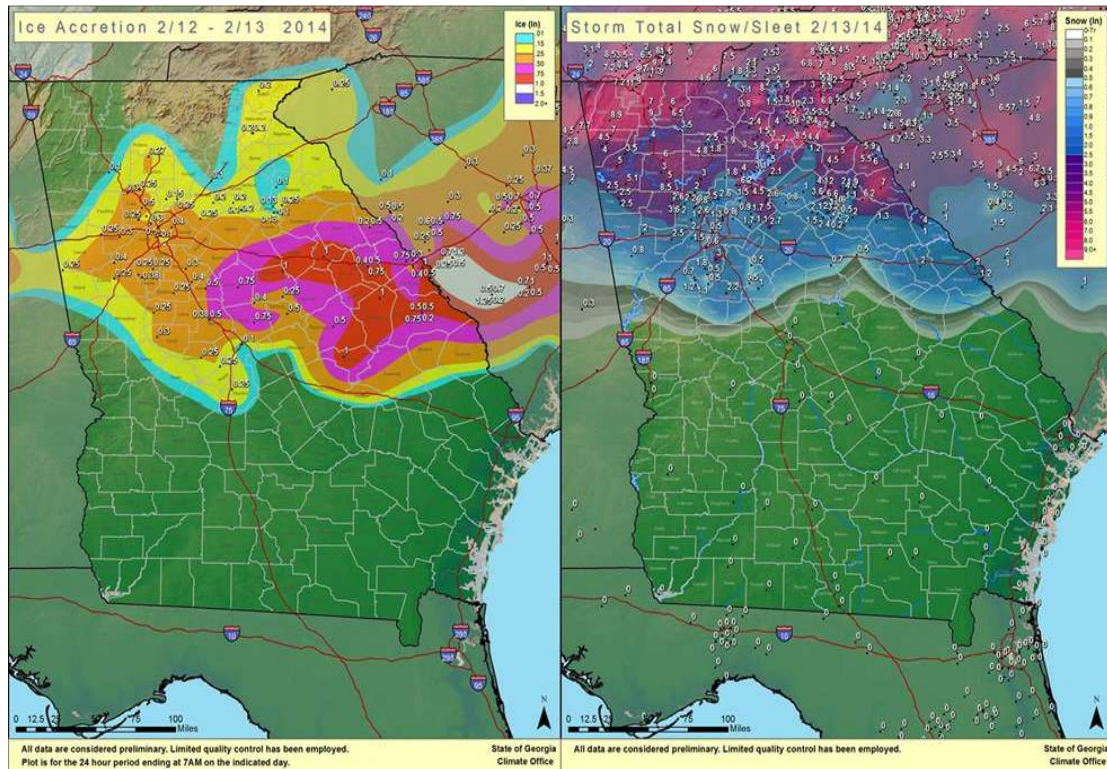


Rainfall amounts were, on average, below normal across much of the state. The statewide average precipitation was 4.04", -0.47 below the 20<sup>th</sup> century average of 4.51" for the month of February. Areas in the Northeast and Southeast experienced the most dryness, with Brunswick and Alma in Southeast Georgia falling almost 2" below normal rainfall.



Two significant weather events occurred at the beginning and the end of the month. A powerful storm brought heavy snow and record levels of ice to north and central Georgia on February 11-13, 2014. Two waves of precipitation occurred with this system, with the second round moving in on Wednesday and proving to be the more significant of the two. Areas along and just south of the Interstate 20 corridor of East Central Georgia received historic ice totals from the system.





A cold front moved through the state on the 21<sup>st</sup>, spawning severe weather with that system. The NWS in Peachtree City confirmed an EF-2 tornado with maximum winds of 125mph struck Laurens and Johnson counties. The tornado touched down at 8:21am, causing significant damage on the northwest and north portions of Dublin, according to the NWS survey team. The tornado continued 17 miles into northeast Laurens and into southern Johnson County before lifting southeast of Wrightsville around 8:41am.