

WELL LOG LOCATION MAPS FOR THE PLIOCENE-TO-RECENT, MIOCENE, PRINCIPAL ARTESIAN AND CRETACEOUS AQUIFERS

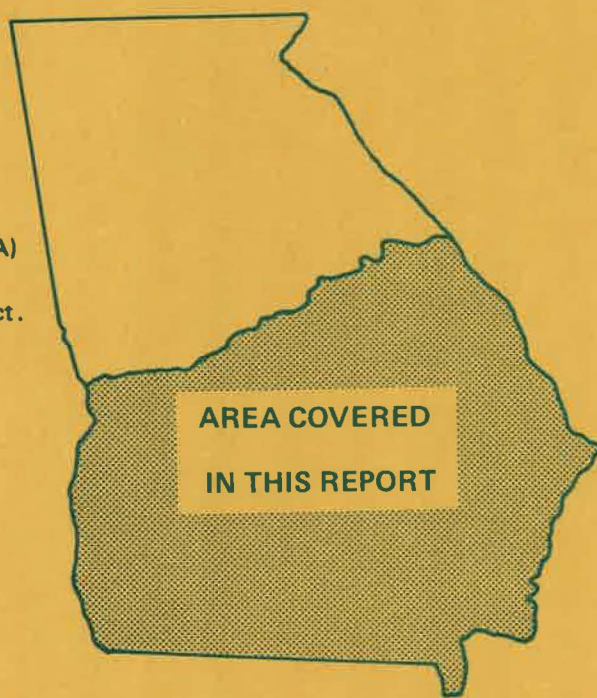
by

M.A. TUOHY, C.L. GARDINIER,

S.E. BROWN and H.C. KARP

Prepared in cooperation with the
U.S. Environmental Protection Agency (EPA)
as part of the
Underground Injection Control (UIC) Project.

Maps are being printed
as part of the
Accelerated Ground-Water Program.



Georgia Department of Natural Resources
Joe D. Tanner, Commissioner

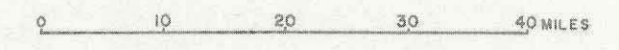
Environmental Protection Division
J. Leonard Ledbetter, Director

Georgia Geologic Survey
William H. McLemore, State Geologist

WELL LOG DISTRIBUTION FOR THE CRETACEOUS AQUIFER SYSTEM

BY

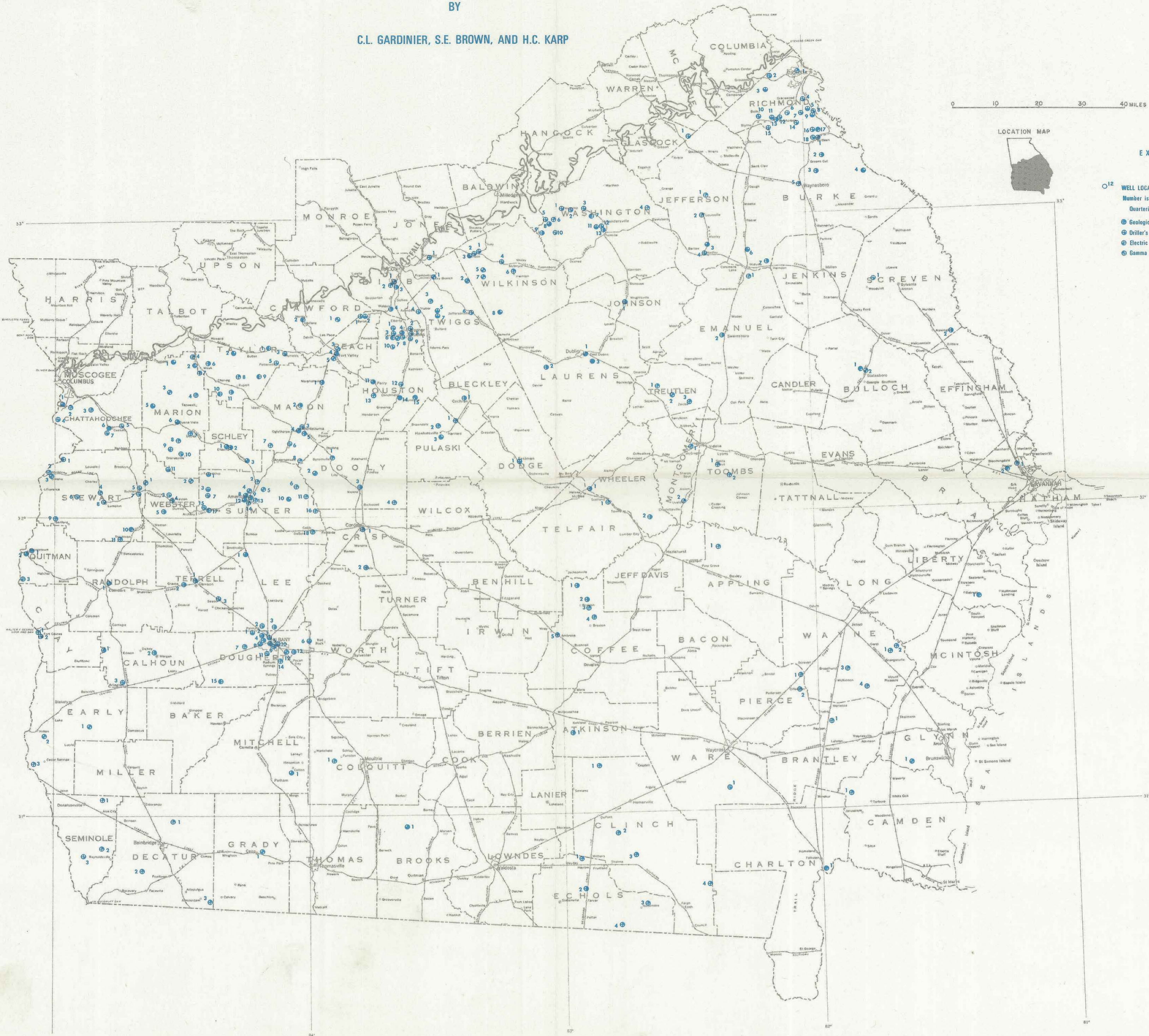
C.L. GARDINIER, S.E. BROWN, AND H.C. KARP



LOCATION MAP

EXPLANATION

- ¹² WELL LOCATION—Encompasses one or more of the wells with logs. Number is reference to county index of wells with logs. Quartering indicates kind of log(s) available:
- Geologic log(s)
- ⊙ Driller's or lithologic log(s)
- ⊗ Electric (S.P. and resistivity) log(s)
- ⊕ Gamma ray log(s)



Many wells drilled into the Cretaceous Aquifer are accompanied by descriptive logs. This map shows the well locations having geologic, lithologic, driller's, electric, or gamma ray logs. Each circle, which represents the location of one or more wells, is quartered to show the kinds of well logs available for that site. Each well location is given a county index number as a cross reference to a tabulated county-by-county well report (separate).

The tabulated well report provides descriptive information about each well and gives the references or data file from which actual copies of the logs can be obtained. Copies of the well report are on file at the Georgia Geologic Survey.

REFERENCES

- Applin, E.C.R., and Applin, P.L., 1964, Logs of selected wells in the Coastal Plains of Georgia: Georgia Geol. Survey Bull. 74, 229 p.
- Herrick, S.M., 1961, Well logs of the Coastal Plain of Georgia: Georgia Geol. Survey Bull. 70, 461 p.
- Unpublished data on file at the U.S. Geological Survey, Hydrology Division, Doraville, Georgia.

WELL LOG DISTRIBUTION FOR THE PRINCIPAL ARTESIAN AQUIFER

BY
C. L. GARDINIER

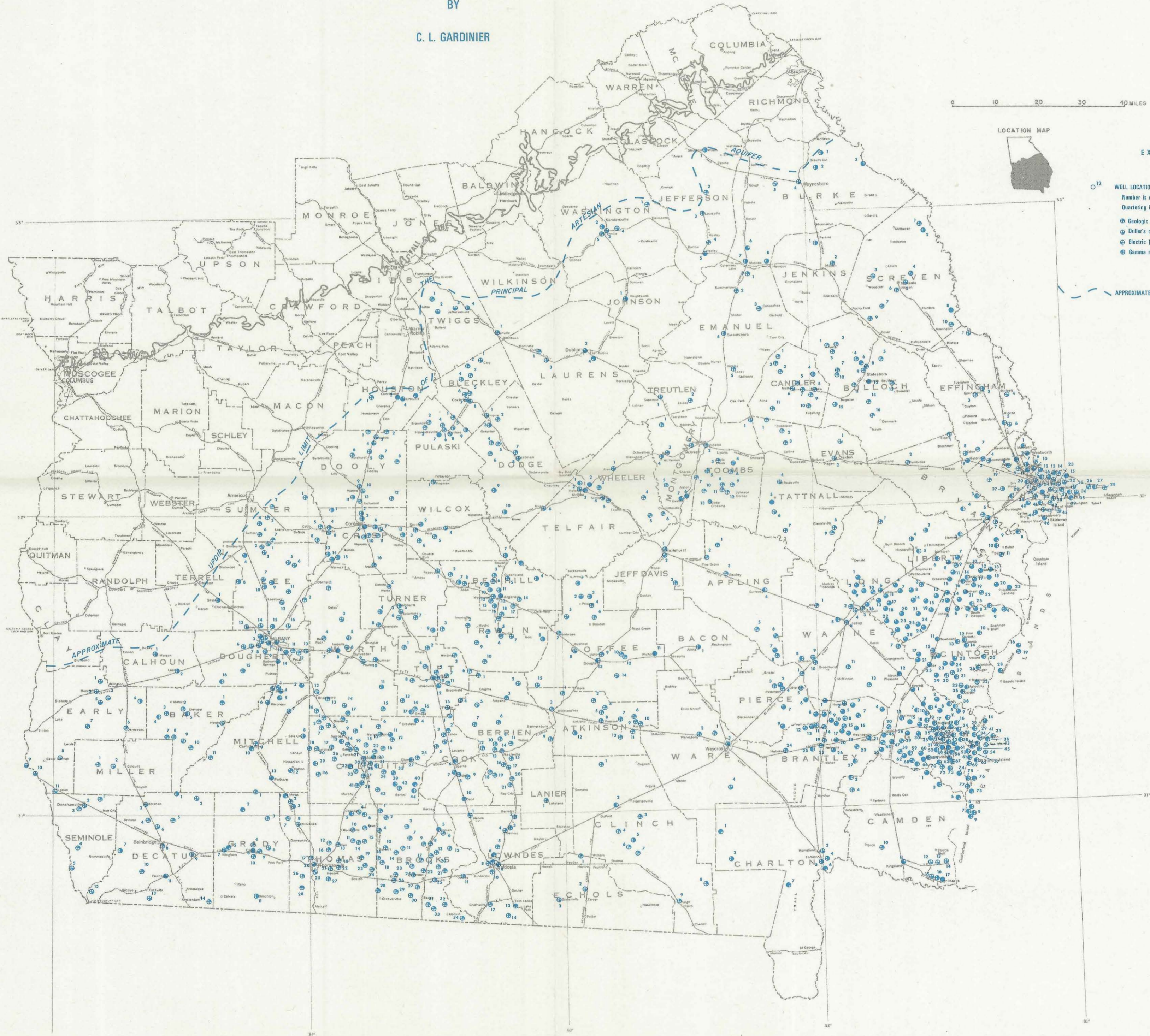
0 10 20 30 40 MILES

LOCATION MAP

EXPLANATION

- ¹² WELL LOCATION - Encompasses one or more of wells with logs. Number is reference to county index of wells with logs. Quartering indicates kind of log(s) available:
 - ⊙ Geologic logs (s)
 - ⊙ Driller's or lithologic log(s)
 - ⊙ Electric (S.P. and resistivity log(s))
 - ⊙ Gamma ray log(s)

--- APPROXIMATE LIMIT OF AQUIFER



Many wells drilled into the Principal Artesian Aquifer are accompanied by descriptive logs. This map shows the well locations having geologic, lithologic, driller's, electric, or gamma ray logs. Each circle, which represents the location of one or more wells, is quartered to show the kinds of well logs available for that site. Each well location is given a county index number as a cross reference to a tabulated county-by-county well report (separate).

The well report provides descriptive information about each well and gives the references or data file from which actual copies of the logs can be obtained. Copies of the well report are on file at the Georgia Geological Survey.

REFERENCES

- Applin, E.E.R., and Applin, F.L., 1964, Logs of selected wells in the Coastal Plains of Georgia: Georgia Geol. Survey Bull. 74, 229 p.
- Herrick, S.M., 1961, Well logs of the Coastal Plain of Georgia: Georgia Geol. Survey Bull. 70, 461 p.
- Unpublished data on file at the U.S. Geological Survey Hydrology Division, Doraville, Georgia.

WELL LOG DISTRIBUTION FOR THE MIOCENE AQUIFER

BY
M. A. TUOHY



EXPLANATION

- ¹² WELL LOCATION - Encompasses one or more of wells with logs. Number is reference to county index of wells with logs. Quartering indicates kind of log(s) available.
 - Geologic log(s)
 - Driller's or lithologic log(s)
 - Electric (S.P. and resistivity) logs
 - Gamma ray log(s)

— APPROXIMATE LIMIT OF AQUIFER - Limit is approximately equivalent to northern extent of outcrop.

Many wells drilled into the Miocene aquifer system are accompanied by descriptive logs. This map shows the well locations having geologic, lithologic, driller's, electric or gamma ray logs. Each circle, which represents the location of one or more wells, is quartered to show the kinds of well logs available for each site. Each well location is given a county index number as a cross reference to a tabulated county-by-county well report (separate).

The tabulated well report provides descriptive information about each well and gives the reference or data file from which actual copies can be obtained. Copies of the well report are on file at the Georgia Geological Survey.

REFERENCES

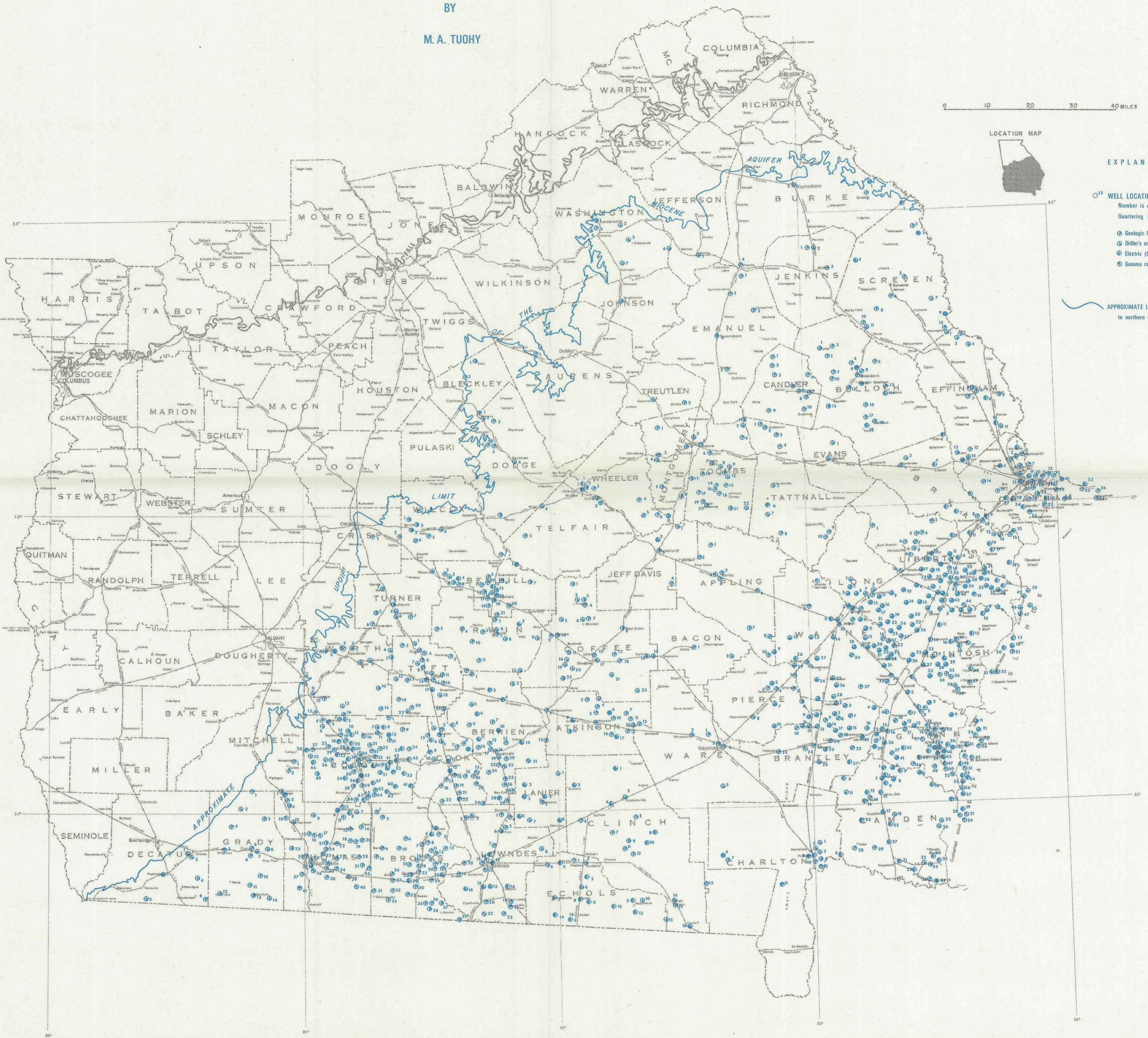
Applin, E.E.R., and Applin, P.L., 1964, Logs of selected wells in the Coastal Plains of Georgia: Georgia Geol. Survey Bull. 74, 229 p.

Herrick, S.M., 1961, Well logs of the Coastal Plain of Georgia: Georgia Geol. Survey Bull. 70, 462 p.

Pickering, S.M., Jr., and others, 1976, Geologic Map of Georgia: Atlanta, Georgia Geol. Survey, Scale 1:500,000.

Unpublished data on file at the Georgia Geological Survey.

Unpublished data on file at the U.S. Geological Survey, Hydrology Division, Doraville, Georgia.



WELL LOG DISTRIBUTION FOR THE PLIOCENE-TO-RECENT AQUIFER

BY
M.A. TUOHY

0 10 20 30 40 MILES

LOCATION MAP

EXPLANATION

- ¹⁸ WELL LOCATION - Encompasses one or more of wells with logs. Number is reference to county index of wells with logs. Quartering indicates kind of log (s) available:
 - ⊗ Geologic log(s)
 - ⊕ Driller's or lithologic log(s)
 - ⊖ Electric (S.P. and resistivity) log(s)
 - ⊙ Gamma ray log(s)

--- APPROXIMATE LIMIT OF AQUIFER

Many wells drilled into the Pliocene-to-Recent aquifer are accompanied by descriptive logs. This map shows the well locations having geologic, lithologic, driller's, electric, or gamma ray logs. Each circle, which represents the location of one or more wells, is quartered to show the kinds of well logs available for that site. Each well location is given a county index number as a cross reference to a tabulated county-by-county well report (separate).

The tabulated well report provides descriptive information about each well and gives the references or data file from which actual copies can be obtained. Copies of the well report are on file at the Georgia Geological Survey.

REFERENCES

- Applin E.R., and Applin, P.L., 1964, Logs of selected wells in the Coastal Plains of Georgia: Georgia Geol. Survey Bull. 74, 229 p.
- Herrick, S.M., 1961, Well logs of the Coastal Plain of Georgia: Georgia Geol. Survey Bull. 70, 462 p.
- Unpublished data on file at the Georgia Geological Survey.
- Unpublished data on file at the U.S. Geological Survey, Hydrology Division, Danville, Georgia.

