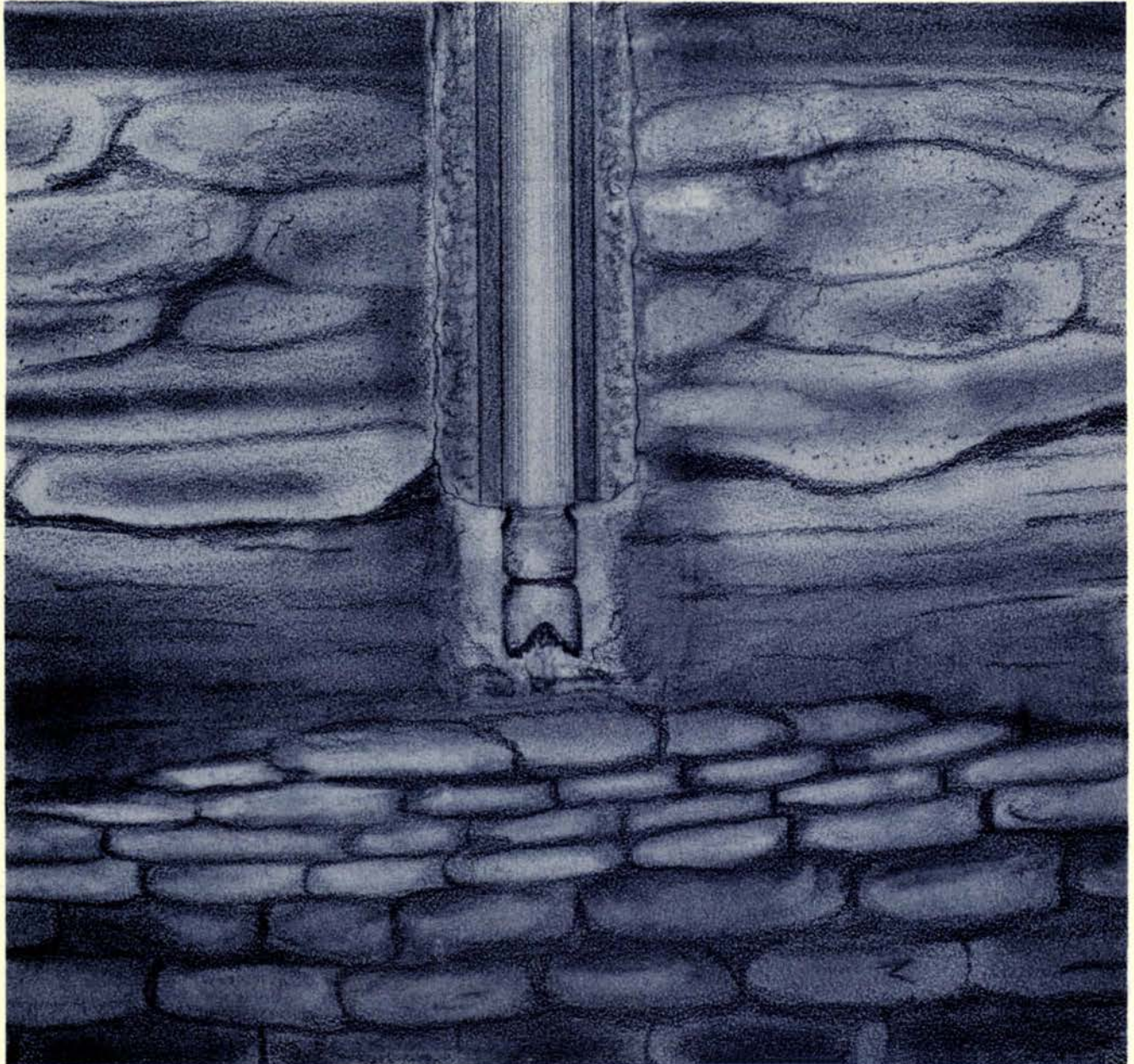


PETROLEUM EXPLORATION WELLS IN GEORGIA 1979-1984

Compiled by
William M. Steele



GEORGIA DEPARTMENT OF NATURAL RESOURCES
ENVIRONMENTAL PROTECTION DIVISION
GEORGIA GEOLOGIC SURVEY

PETROLEUM EXPLORATION WELLS IN GEORGIA 1979-1984

**Compiled by
William M. Steele**

**GEORGIA DEPARTMENT OF NATURAL RESOURCES
J. Leonard Ledbetter, Commissioner
ENVIRONMENTAL PROTECTION DIVISION
Harold F. Reheis, Assistant Director
GEORGIA GEOLOGIC SURVEY
William H. McLemore, State Geologist**

**Atlanta
1986**

INFORMATION CIRCULAR 77

TABLE OF CONTENTS

	Page
Conversion Table	iii
Abbreviations	iii
Introduction	1
Description of Contents	1
Applicable State Laws	1
Availability of Information	1
Camden County	
Virginia Polytechnic Institute—Kings Bay No. 1	2
Amoco Production Co.—Amoco-Pennington-Union Camp No. 1	3
Chatham County	
Virginia Polytechnic Institute—Savannah Airport No. 1	4
Colquitt County	
Houston Oil & Minerals Corp.—H. Parker No. 1	5
Crawford County	
Alpha I.H.C., Inc.—K. Young No. 1	6
Dade County	
Sonat Exploration Co.—Brown No. 1	7
Early County	
Exxon—S. Wilson No. 1	8
Evans County	
Evans County Oil Co.—J. Mangrum No. 1	9
Glynn County	
William K. Davis—Scott & Mead Timber Co. No. 1-E	10
William K. Davis—Union Camp Corp. No. 1	11
Heard County	
H. Lamar Curry & Associates—Williamson No. 1	12
Jeff Davis County	
Chevron U.S.A., Inc.—A.P. Snipes et al. No. 1	13
Peach County	
English-Georgia Exploratory Petroleum Co., Ltd.—	
English No. 1	14
Washington County	
Geo 78, Ltd.—T.R. Taylor No. 1	15
Sepco—G. Giesbrecht No. 1	16
Sepco—Malpasse No. 1	17
Sepco—Triple C Farms, Inc. No. 1	18
Sepco—McCoy No. 1	19
Wilkinson County	
J.W. Whitaker—W.I. Allen No. 1	20
Sepco—Belote No. 1	21
Sepco—Georgia Kraft No. 1	22
Worth County	
J.D. Simmons, Inc.—Varner No. 1	23
Sources	24

TABLE OF CONTENTS cont.	Page
--------------------------------------	-------------

FIGURE

1. Oil and gas drilling permits issued per year, 1979-1984	1
------------------------------------------------------------------	---

PLATE

1. Well location map	In pocket
----------------------------	-----------

**FACTORS FOR CONVERTING INCH-POUND UNITS
TO INTERNATIONAL SYSTEM (SI) UNITS**

The following factors may be used to convert the inch-pound units published herein to the International System of Units (SI).

Multiply inch-pound	By	To obtain SI units
inch (in.)	2.54	centimeter (cm)
foot (ft.)	.3048	meter (m)
mile (mi.)	1.609	kilometer (km)
square mile (mi. ²)	2.590	square kilometer (km ²)

ABBREVIATIONS

- D.F. - Derrick floor.
- D.P. - Drill Permit.
- G.G.S. - Georgia Geologic Survey.
- G.M.D. - Georgia Militia District.
- G.L. - Ground level.
- K.B. - Kelly bushing.
- T.D. - Total depth.
- U.S.G.S. - United States Geological Survey.
- U.S.C. & G.S. - United States Coast and Geodetic Survey.

INTRODUCTION

This publication lists petroleum and related exploration wells drilled in Georgia from 1979 through 1984. Swanson and Gernazian (1979) listed oil tests drilled from 1903 to 1979 (portion of year). Readers should obtain both publications to have complete information on exploration wells in Georgia.

Eighteen permits to drill were issued from 1979 to 1984 (Figure 1). Total footage drilled was approximately 87,000 ft. Sixteen test wells were drilled in the Coastal Plain Province, one in the Piedmont Province and one in the Cumberland Plateau Section (Plate 1). Chevron U.S.A., Inc. drilled an 11,470 ft. test in Jeff Davis Co.; this is the deepest well to date in Georgia. Virginia Polytechnic Institute (V.P.I.) drilled two wells near the Georgia coast to assess geothermal energy potential.

Swanson and Gernazian (1979) listed four wells (Evans Co., D.P. No. 102; Glynn Co., D.P. No. 110; Washington Co., D.P. No. 109; and Wilkinson Co., D.P. No. 105) that were in progress at the time of that printing. These wells, which were drilled in the Coastal Plain Province (Plate 1), have been completed and are also included in this report. Total footage of the four wells is approximately 11,550 ft.

All wells listed in this report are "dry".

DESCRIPTION OF CONTENTS

Wells in this report are located by county and by latitude and longitude. Accuracy of well locations is included with latitude-longitude figures (ie. $\pm 2''$, $\pm 5''$). Individual well location maps are 1:24,000-scale 7.5' U.S.G.S. topographic quadrangles. Contour intervals vary; therefore, they are listed with each location map.

Total depth footage was, in most cases, obtained from Well Completion Reports. Geophysical log intervals were taken directly from the logs. Minor discrepancies exist between total depth and log depth footages on some wells.

The Drill Permit Number (D.P. No.) is the sequential number assigned to each oil and/or gas test as it is permitted. The Georgia Geologic Survey Number (G.G.S. No.) is the index number of each well that has samples incorporated in the Survey's Cuttings Library. Users are asked to refer to one or both of these numbers when requesting information on a particular well. Other abbreviations are explained on page iii.

APPLICABLE STATE LAWS

In December of 1981, Georgia's rules and regulations for Oil and Gas and Deep Drilling were promulgated (Chapter 391-3-13). In 1982, permit forms were updated (Form G.G.S. 1-5). The Oil and Gas and Deep Drilling Act of 1975 has not been changed since it was

enacted. Copies of the Act, rules and permit forms are available from the G.G.S. office. As of April 1984, all new permits issued will require a 30-calendar-day public-notice period. These notices are published by the Georgia Environmental Protection Division (EPD) in the major Atlanta newspapers as well as the local newspaper of the affected area.

AVAILABILITY OF INFORMATION

Information on wells (i.e. geophysical logs, samples, etc.) is available to the public with the exception of the confidential tests. Well data are confidential for six months after the date of plugging with the option to extend the period to a maximum of two years after the six-month period. Requests for extension of the confidential period should be made in writing before the six-month period expires.

A limited amount of page-sized material (8½ in. x 11 in. and 8½ in. x 14 in.) can be copied at the Survey office for \$0.25/page; however, there are no facilities for copying extensive geophysical logs. Interested parties should obtain outside duplication for the more extensive logs. The company or individual requesting logs will be billed directly for copying charges. Persons interested in visiting G.G.S. to review logs, samples, etc. are asked to contact the Information Geologist at least one week prior to their arrival.

Readers are asked to submit additions, corrections or any suggestions for improvement to the compiler.

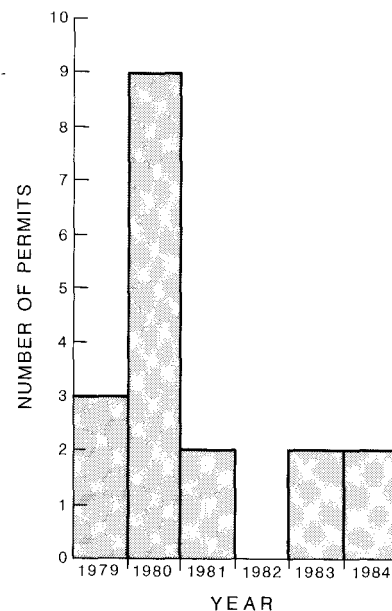


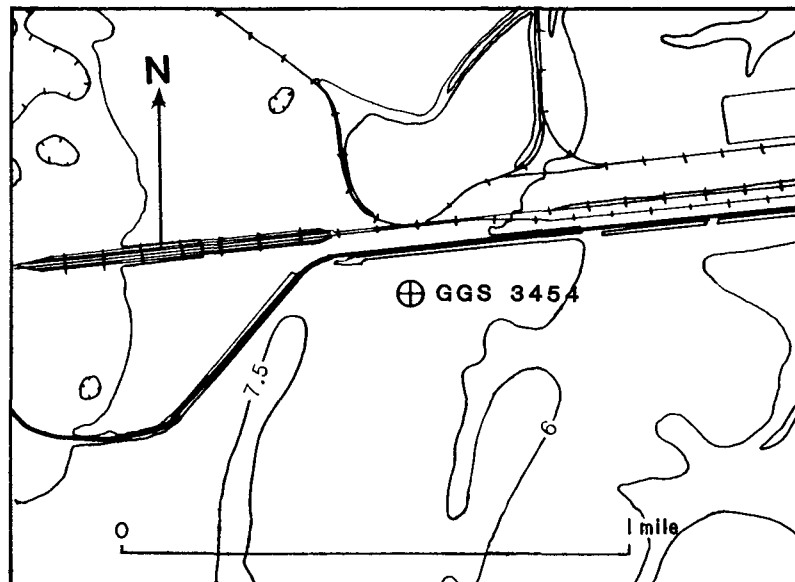
Figure 1: Oil and gas drilling permits issued per year, 1979-1984.

CAMDEN COUNTY

Operator: Virginia Polytechnic Institute-
Geothermal Program
Landowner: Kings Bay No. 1
Location: Approximately 4 miles N. of
St. Marys (Harrietts Bluff 7.5'
Quadrangle)
Lat. 30°47'40"±2"N.
Long. 81°33'23"±2"W.

G.G.S. No. 3454
D.P. No. 119
Elevation: 25 ft. G.L.
Total Depth: 980 ft.
Completed: March 6, 1982

Remarks: Temperature Log (0ft. - 980ft.), Gamma Ray Log (5ft. - 972ft.) and samples (0ft. - 980ft.). This well was drilled under contract from the U.S. Department of Energy to assess geothermal energy potential.

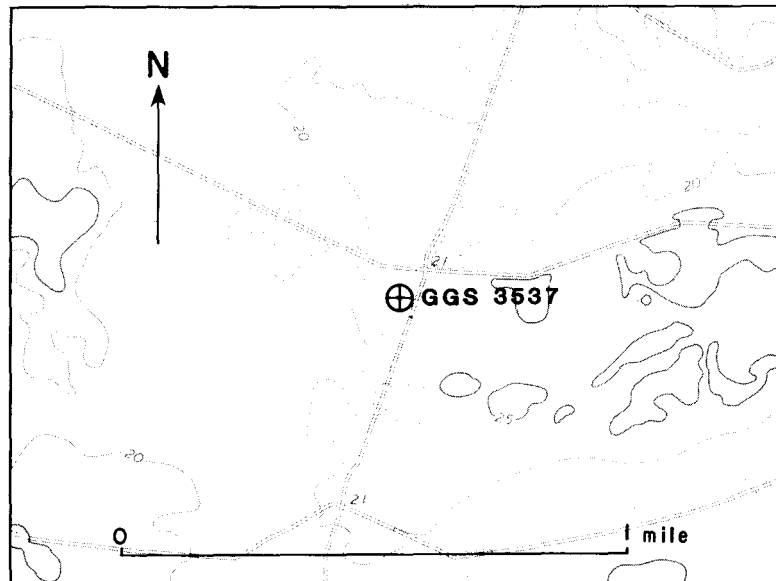


Contour Interval = 1.5 meters

Operator: Amoco Production Company
Landowner: Amoco-Pennington-Union Camp
No. 1
Location: 5 miles N.W. of Kingsland
(Kings Ferry 7.5' Quadrangle).
From U.S.C. & G.S. Station
Kingsland 1983, go N. 79°44'50"W.
23,718.44 ft.
Lat. 30°49'56"±2"N.
Long. 81°45'55"±2"W.

G.G.S. No. 3537
D.P. No. 125
Elevation: 20 ft. G.L.
39 ft. D.F.
40 ft. K.B.
Total Depth: 10,000 ft.
Completed: March 25, 1984

Remarks: BHC Sonic (2094 ft. - 9393 ft.), Borehole Compensated Sonic Log (9200 ft. - 9934 ft.), Simultaneous Compensated Neutron - Litho Density (2094 ft. - 9961 ft.), Dual Induction - SFL (2094 ft. - 9032 ft.), Dual Induction - SFL (9200 ft. - 9964 ft.), Geopressure Analysis Log (150 ft. - 10,000 ft.), "mud" log (100 ft. - 10,000 ft.), Normalized Penetration Pore Pressure Plots (110 ft. - 10,000 ft.), Magnetic Multiple Shot Survey and samples (100 ft. - 10,000 ft.). Well data are confidential until September 25, 1986.

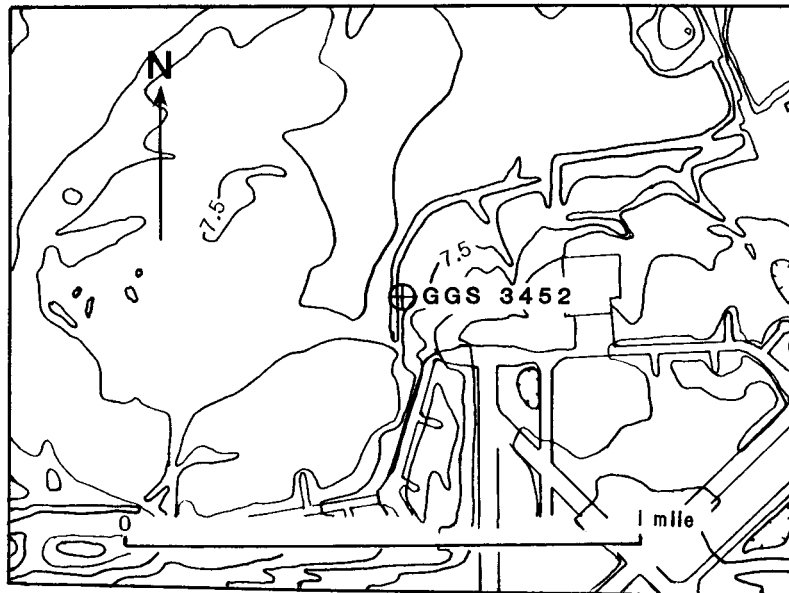


Contour Interval = 5 ft.

CHATHAM COUNTY

Operator:	Virginia Polytechnic Institute- Geothermal Program	G.G.S. No.	3452
Landowner:	Savannah Municipal Airport No. 1	D.P. No.	118
Location:	Approximately 2.6 miles W.S.W. of Port Wentworth (Port Wentworth 7.5' Quadrangle). Lat. 32°08'13"±2"N. Long. 81°12'12"±2"W.	Elevation:	19 ft. G.L.
		Total Depth:	1000 ft.
		Completed:	March 6, 1982

Remarks: Acoustic Velocity Log (Dual Receiver) (46 ft. - 998 ft.), Caliper Log (0 ft. - 998 ft.), Caliper Log (3 Arm)/Natural Gamma (0 ft. - 1000 ft.), Electric Log (Guard) (50 ft. - 901 ft.), Electric Log (16 - 64 Normal) (46 ft. - 1001 ft.) and Neutron Porosity Log (4 ft. - 1000 ft.). This well was drilled under contract from the U.S. Department of Energy to assess geothermal energy potential.



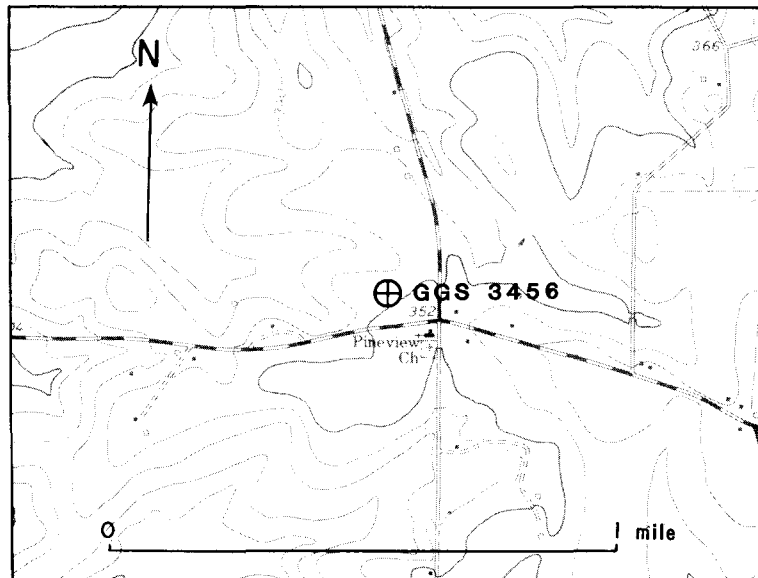
Contour Interval = 1.5 meters.

COLQUITT COUNTY

Operator: Houston Oil & Minerals Corp.
Landowner: Horace Parker No. 1
Location: Approximately 10 mi. N.W. of
Moultrie (Hartsfield 7.5'
Quadrangle). 500 ft. from E.
line and 1280 ft. from S. line
of Land Lot 179, 8th Land District.
Lat. 31°14'16"±2"N.
Long. 83°54'48"±2"W.

G.G.S. No. 3456
D.P. No. 120
Elevation: 348 ft. G.L.
Total Depth: 6902 ft.
Completed: November 24, 1980

Remarks: Simultaneous Compensated Neutron-Formation Density (5200 ft. - 6890 ft.), Dual Induction-
Laterolog Borehole Compensated Sonic Log (1170 ft. - 6887 ft.), Processed Dipmeter Log (1175 ft.
-6891 ft.), Sample Log (1170 ft. - 6902 ft.), Seismic Survey (along Ga. Hwy. 133) and samples (0 ft.
-6900 ft.).



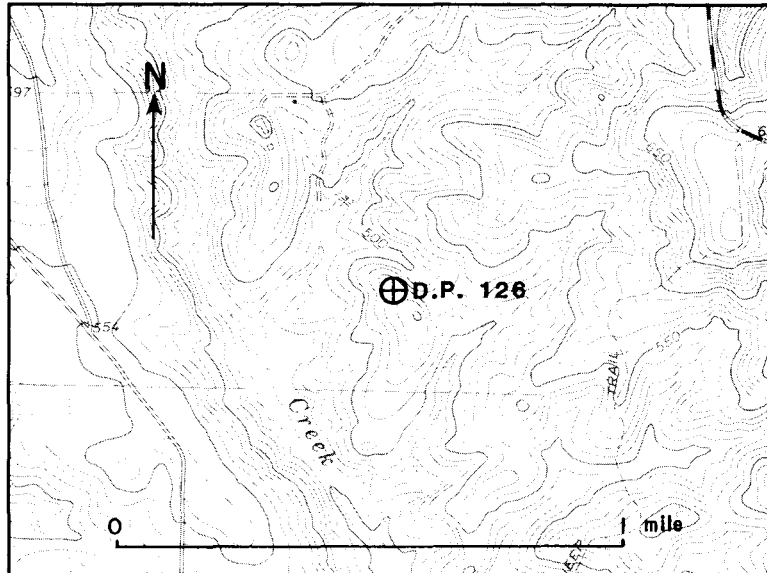
Contour Interval = 10 ft.

CRAWFORD COUNTY

Operator: Alpha I.H.C., Inc.
Landowner: Kenneth Young No. 1
Location: 3 miles S.E. of Knoxville
(Knoxville 7.5' Quadrangle).
Lat. 32°41'47"±2"N.
Long. 83°56'46"±2"W.

G.G.S. No.
D.P. No. 126
Elevation: 538 ft. G.L.
Total Depth: 2,280 ft.
Completed: February 14, 1985

Remarks: No logging was performed on this well.



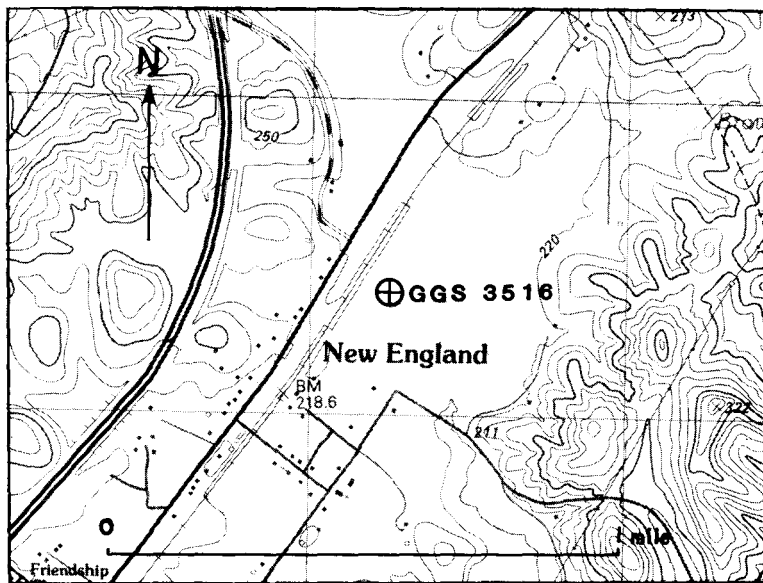
Contour Interval = 10 ft.

DADE COUNTY

Operator: Sonat Exploration Co.
Landowner: Brown No. 1
Location: Approximately 0.25 mi. N.N.E. of New England (Hooker 7.5' Quadrangle). 424 ft. from Southern R.R. and 368 ft. from Squirrel Town Creek. Land Lot 185, 10th Land District.
Lat. 34°54'51"±2"N.
Long. 85°28'33"±2"W.

G.G.S. No. 3516
D.P. No. 123
Elevation: 701 ft. G.L.
724 ft. D.F.
725 ft. K.B.
Total Depth: 8225 ft.
Completed: February 3, 1982

Remarks: Fracture Identification Log with Correlation Log (1040 ft. - 8190 ft.), Induction Laterolog (1031 ft. - 8183 ft.), Simultaneous Compensated Neutron-Formation Density (1029 ft. - 8090 ft.), Four-Arm High Resolution Continuous Dipmeter (1040 ft. - 8190 ft.), Dual Induction-SFL-Sonic With Linear Correlation Log (1031 ft. - 8183 ft.), "mud" log (1033 ft. - 8222 ft.), core description and samples (1030 ft. - 8105 ft.).



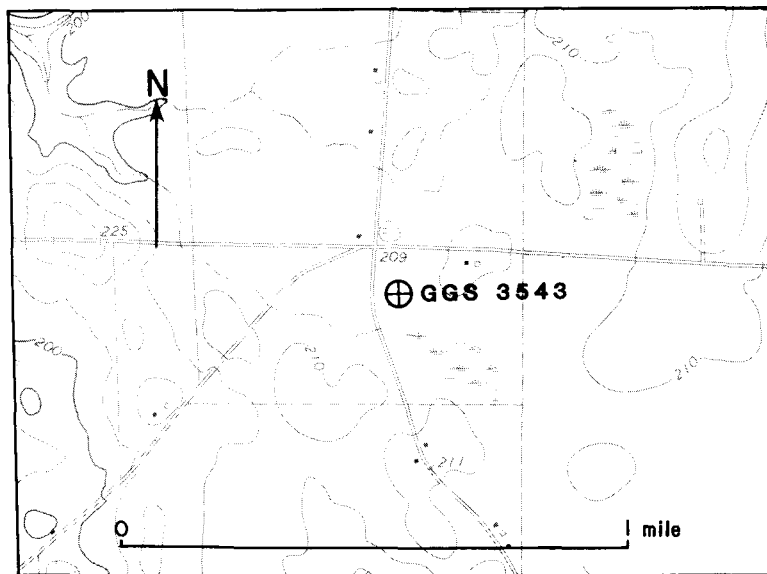
Contour Interval = 20 ft.

EARLY COUNTY

Operator: Exxon Corporation
Landowner: S. Wilson No. 1
Location: 2.8 miles W. of Lucile
(Lucile 7.5' Quadrangle).
1309 ft. from E. line and 427 ft.
from N. line of Land Lot 218, 26th
Land District.
Lat. $31^{\circ}14'12''\pm 2''$ N.
Long. $84^{\circ}57'52''\pm 2''$ W.

G.G.S. No. 3543
D.P. No. 128
Elevation: 203 ft. G.L.
236 ft. D.F.
237 ft. K.B.
Total Depth: 9176 ft.
Completed: November 15, 1984

Remarks: Dual Induction (1800 ft. - 8468 ft.), Dual Induction - Sonic (1800 ft. - 8468 ft.) and samples (500 ft. - 9176 ft.). Well data are confidential until May 15, 1986.

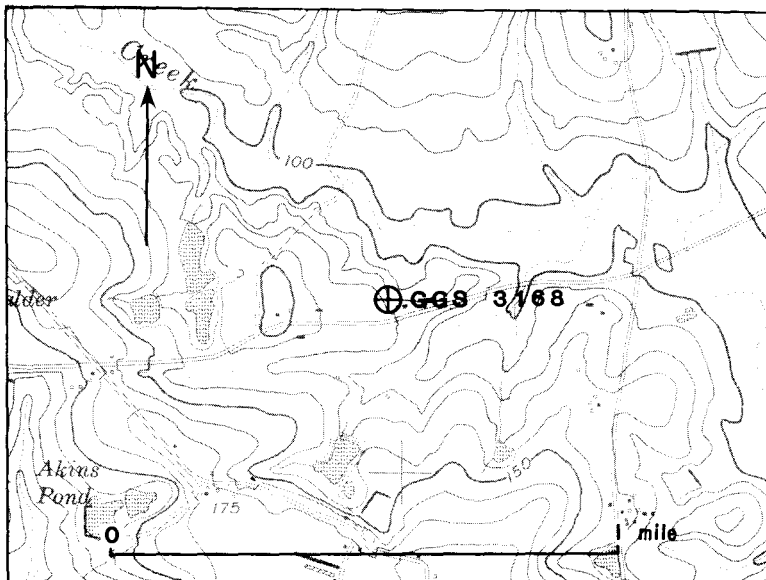


Contour Interval = 10 ft.

EVANS COUNTY

Operator:	Evans County Oil Company	G.G.S. No.	3168
Landowner:	J. Mangrum No. 1	D.P. No.	102
Location:	Approximately 5.5 mi. N.E. of Claxton (Daisy 7.5' Quadrangle). G.M.D. No. 1738 Lat. 32°12'48"±5"N. Long. 81°50'01"±5"W.	Elevation:	Approximately 120 ft. G.L.
		Total Depth:	1440 ft.
		Completed:	Well abandoned.

Remarks: Geologic report, lithologic log, water and surface soil analyses.



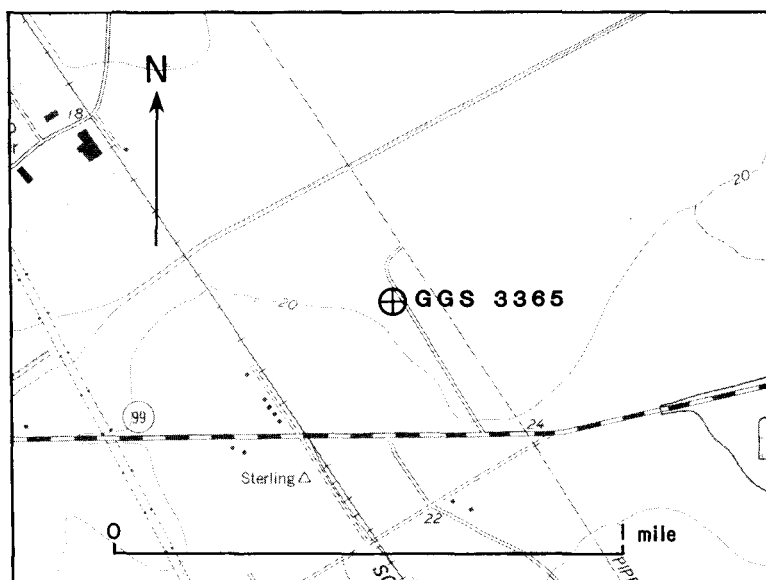
Contour Interval = 10 ft.

GLYNN COUNTY

Operator: William K. Davis
Landowner: Scott & Mead Timber Co. No. 1-E
Location: Approximately 8 miles N.N.W. of Brunswick (Sterling 7.5' Quadrangle). 1445.86 ft. N. 56°00' E. of Southern R.R. right-of-way and 1373.73 ft. N.0°27' W. of Ga. Hwy 99.
Lat. 31°16'33"±2"N.
Long. 81°32'39"±2"W.

G.G.S. No. 3365
D.P. No. 110
Elevation: 20 ft. G.L.
31 ft. D.F.
32 ft. K.B.
Total Depth: 4506 ft.
Completed: January 8, 1979

Remarks: Dual Induction Focused Log (1070 ft. - 4508 ft.), Compensated Densilog (1070 ft. - 4508 ft.), "mud" log (2000 ft. - 4500 ft.) and samples (1090 ft. - 4500 ft.). Converted to a U.S.G.S. water monitoring well.

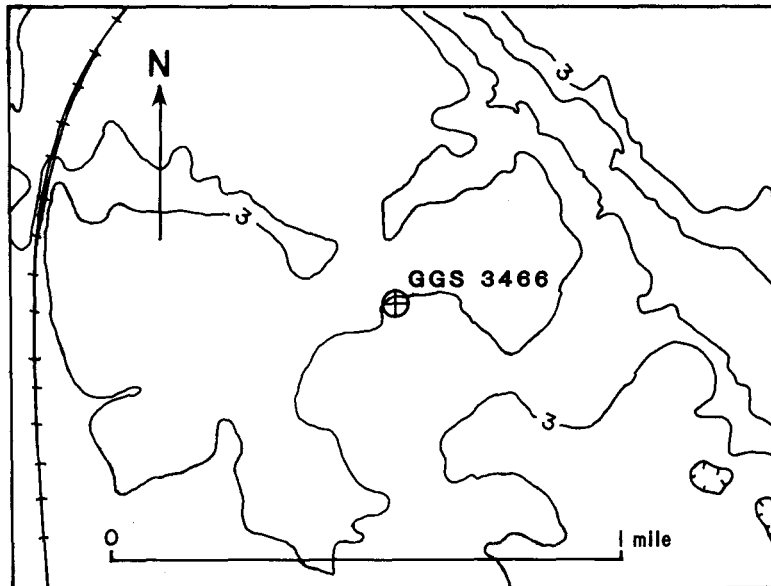


Contour Interval = 5 ft.

Operator: William K. Davis
Landowner: Union Camp Corporation No. 1
Location: Approximately 9 miles N.W. of Brunswick (Brunswick West 7.5' Quadrangle).
G.M.D. No. 1499
Lat. 31°13'44"±2"N.
Long. 81°37'04"±2"W.

G.G.S. No. 3466
D.P. No. 122
Elevation: 10 ft. G.L.
17 ft. & 35 ft.
D.F.*
18 ft., 25 ft., &
36 ft., K.B.*
Total Depth: 8468 ft.
Completed: September 17, 1982

Remarks: BHC Acoustilog (1320 ft. - 8433 ft.), Compensated Densilog Compensated Neutron Gamma Ray (4800 ft. - 6166 ft.), Compensated Densilog (6000 ft. - 8444 ft.), Dual Induction Focused Log (1320 ft. - 4950 ft.), Dual Induction Focused Log (4050 ft. - 6056 ft.), Dual Induction Focused Log (6000 ft. - 8439 ft.), petrographic descriptions (6050 ft. - 6150 ft., 7820 ft. - 7830 ft., 8010 ft., 8280 ft. and 8420 ft.) and samples (1330 ft. - 8430 ft.). Converted to a U.S.G.S. water monitoring well.
*Differences in D.F. and K.B. elevations are probably due to at least two different drilling rigs being used on this well.

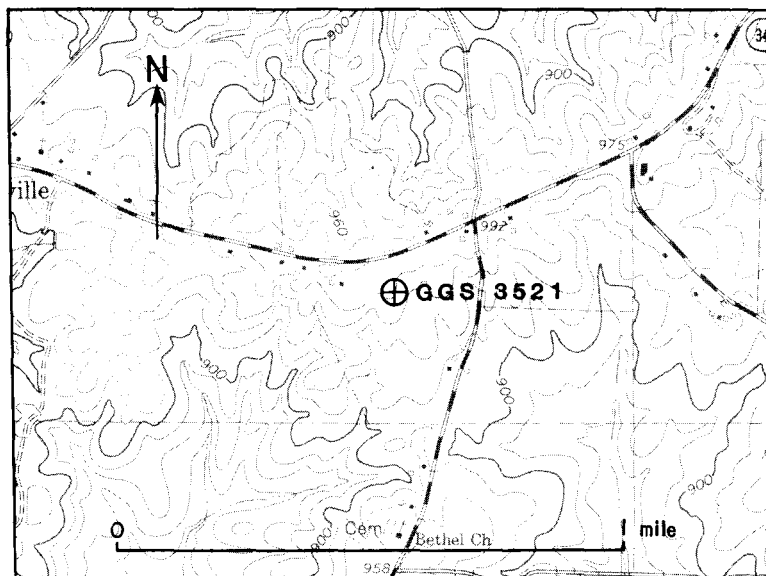


Contour Interval = 1.5 meters

HEARD COUNTY

Operator:	H. Lamar Curry & Associates, Inc.	G.G.S. No.	3521
Landowner:	Williamson No. 1	D.P. No.	124
Location:	8 miles S.W. of Franklin (Glenn 7.5' Quadrangle). Land Lot 133, Land District 15. Lat. 33°13'29"±5"N. Long. 85°13'28"±5"W.	Elevation:	Approximately 980 ft. G.L.
		Total Depth:	1322 ft.
		Completed:	March 18, 1983

Remarks: Samples (100 ft. - 1322 ft.). No logging was performed on this well.



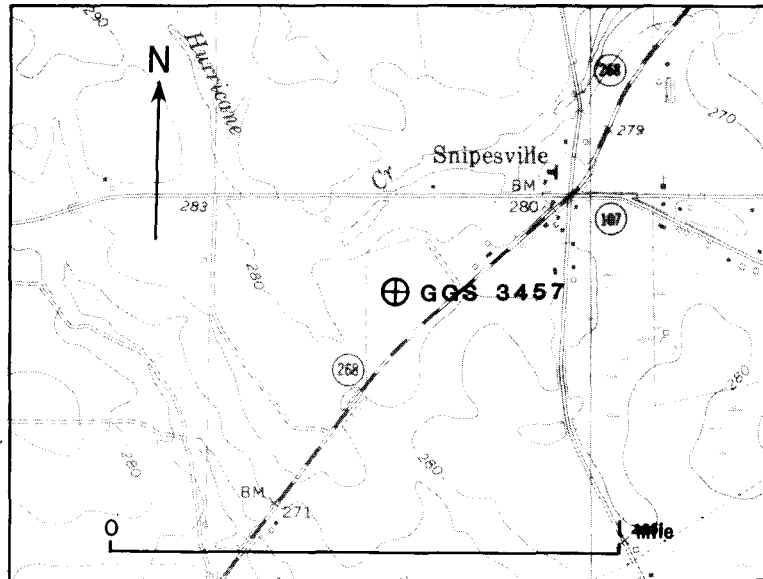
Contour Interval = 20 ft.

JEFF DAVIS COUNTY

Operator: Chevron U.S.A., Inc.
Landowner: A.P. Snipes et al. No. 1
Location: 0.4 miles S.W. of Snipesville
(Snipesville 7.5' Quadrangle).
1015 ft. S. and 1946.1 ft. E.
of N.W. corner of Land Lot
262, 1st Land District.
Lat. 31°45'33"±2"N.
Long. 82°45'24"±2"W.

G.G.S. No. 3457
D.P. No. 121
Elevation: 287 ft. G.L.
311 ft. D.F.
312 ft. K.B.
Total Depth: 11,470 ft.
Completed: June 29, 1981

Remarks: Borehole Compensated Sonic Log (7500 ft. - 11,410 ft.), Compensated Formation Density Log (Gamma-Gamma) (4060 ft. - 11,442 ft.), Dipmeter Arrow Plot (4050 ft. - 11,440 ft.), Dual Induction- Laterolog Borehole Compensated Sonic Log (420 ft. - 11,439 ft.), Dual Induction SFL (420 ft. - 11,439 ft.), Microlog (7500 ft. - 11,442 ft.), Simultaneous Compensated Neutron-Formation Density (4060 ft. - 11,442 ft.) and samples (90 ft. - 11,450 ft.). Deepest well drilled in Georgia, to date.



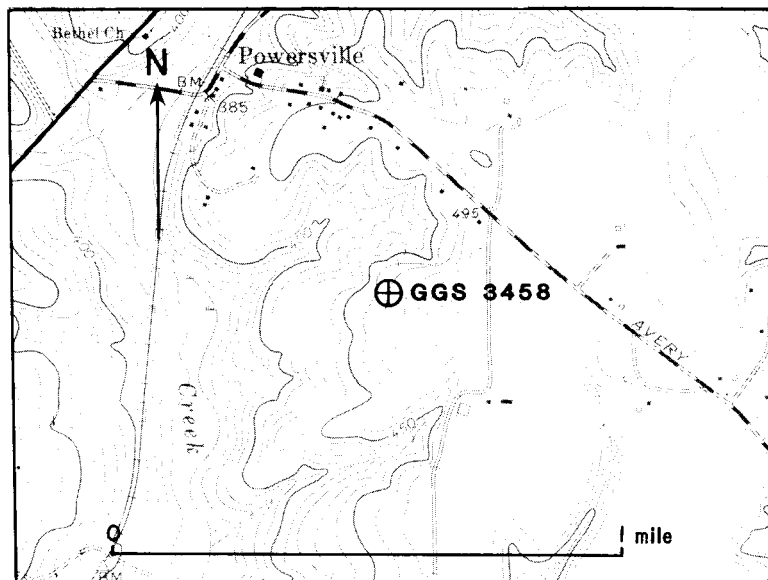
Contour Interval = 10 ft.

PEACH COUNTY

Operator: English-Georgia Exploratory
Petroleum Company, Ltd.
Landowner: English No. 1
Location: Approximately 0.5 mi. S.E. of
Powersville Post Office
(Fort Valley East 7.5'
Quadrangle).
Land Lot 243, 6th Land District.
Lat. 32°35'49"±5"N.
Long. 83°47'16"±5"W.

G.G.S. No. 3458
D.P. No. 117
Elevation: Approximately 472
ft. G.L.
Total Depth: Approximately
1900 ft.
Completed: July 6, 1983

Remarks: Acoustic Velocity Log (524 ft. - 898 ft.), Caliper Log, Electric Log (520 ft. - 857 ft.), Natural Gamma Log (0 ft. - 913 ft.), Neutron Porosity Log (138 ft. - 916 ft.), Gamma Ray Log (6 ft. - 906 ft.), Temperature Log (100 ft. - 919 ft.) and samples (100 ft. - 930 ft.).



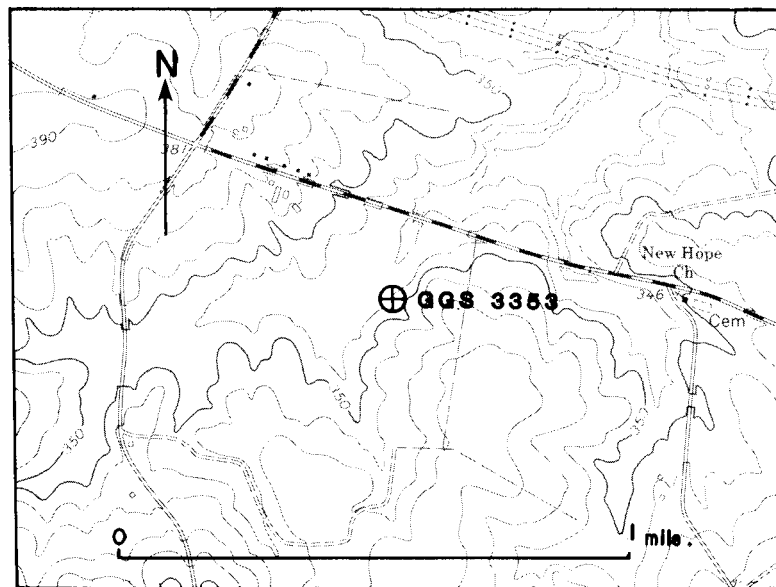
Contour Interval = 10 ft.

WASHINGTON COUNTY

Operator: Geo 78, Ltd.
Landowner: T.R. Taylor No. 1
Location: 3.26 miles, due S., from center
of Davisboro (Davisboro 7.5'
Quadrangle).
Lat. 32°55'51"±2"N.
Long. 82°36'36"±2"W.

G.G.S. No. 3353
D.P. No. 109
Elevation: 342 ft. G.L.
348 ft. D.F.
Total Depth: 4000 ft.
Completed: Well open and bonded
as of publication
date.

Remarks: Sonan Epilog (2300 ft. - 3660 ft.), Computer Processed Interpretation (Includes - Induction, Neutron, Density and Sonic Logs) (1190 ft. - 3780 ft.), Induction Laterolog (1189 ft. - 3809 ft.), Sonan (500 ft. - 3664 ft.), Borehole Compensated Sonic Log (1189 ft. - 3780 ft.), Fracture Identification Log With Correlation Log (1200 ft. - 3812 ft.), Cement Bond Sonic Attenuation Log (1500 ft. - 3720 ft.) Perforation Depth Control (2000 ft. - 3718 ft.), Simultaneous Compensated Neutron-Formation Density (1190 ft. - 3812 ft.), Dual Induction-Laterolog (1189 ft. - 3809 ft.), "mud" log (50 ft. - 3808 ft.) and samples (50 ft. - 3805 ft.).

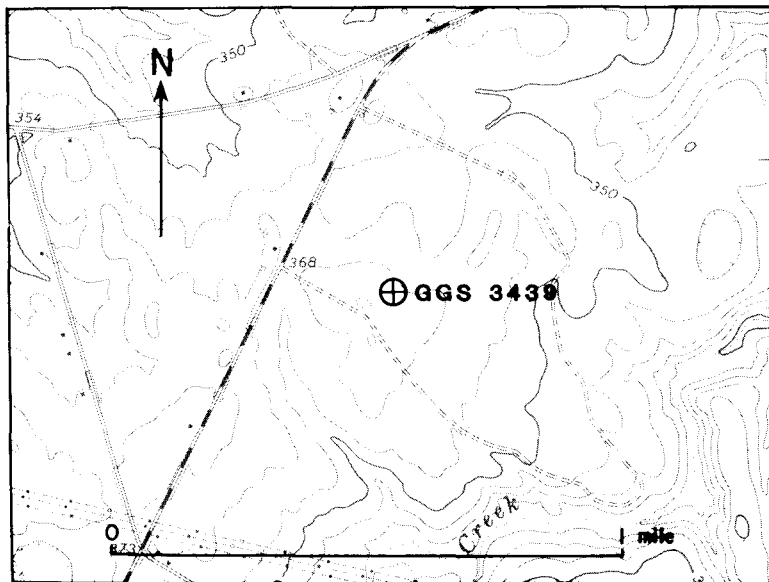


Contour Interval = 10 ft.

Operator: Southeastern Exploration and
Production Corporation - Sepco
Landowner: G. Giesbrecht No. 1
Location: 2.5 miles S.W. of Davisboro
(Riddleville 7.5' Quadrangle).
Lat. 32°57'17"±2"N.
Long. 82°38'17"±2"W.

G.G.S. No. 3439
D.P. No. 111
Elevation: 373 ft. G.L.
383 ft. D.F.
384 ft. K.B.
Total Depth: 2576 ft.
Completed: December 13, 1984

Remarks: Borehole Compensated Sonic Log (1132 ft. - 2570 ft.), Fracture Identification Log (1140 ft. - 2575 ft.), "mud" log (80 ft. - 2576 ft.), Electric Log (75 ft. - 1115 ft.), Gamma/Caliper Log (0 ft. - 1115 ft.) and samples (80 ft. - 2570 ft.).

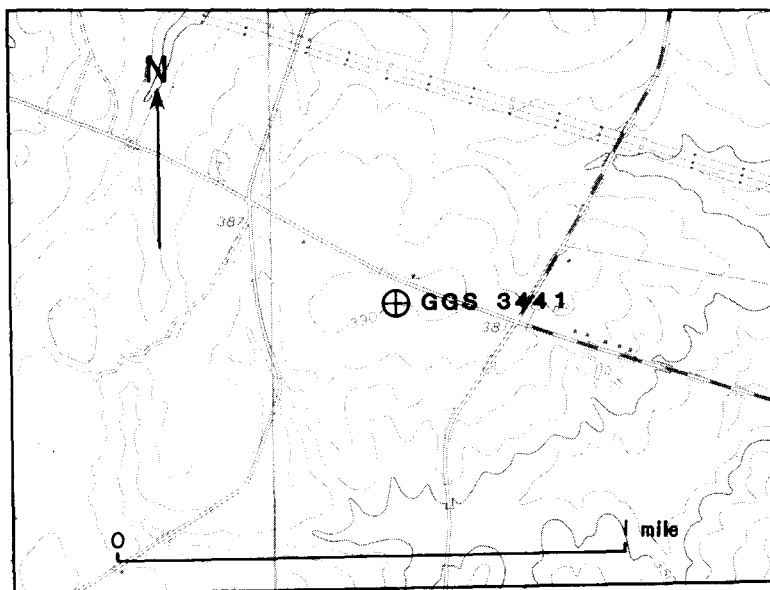


Contour Interval = 10 ft.

Operator: Southeastern Exploration and
Production Corporation - Sepco
Landowner: Malpasse No. 1
Location: 3 miles S. of Davisboro
(Davisboro 7.5' Quadrangle).
Lat. 32°56'09"±2"N.
Long. 82°37'15"±2"W.

G.G.S. No. 3441
D.P. No. 112
Elevation: 390 ft. G.L.
400 ft. D.F.
401 ft. K.B.
Total Depth: 5641 ft.
Completed: July 11, 1985.

Remarks: Borehole Compensated Sonic Log (1162 ft. - 5600 ft.), Fracture Identification Log With Correlation Log (1170 ft. - 5601 ft.), "mud" log (50 ft. - 5641 ft.) and samples (200 ft. - 5600 ft.).

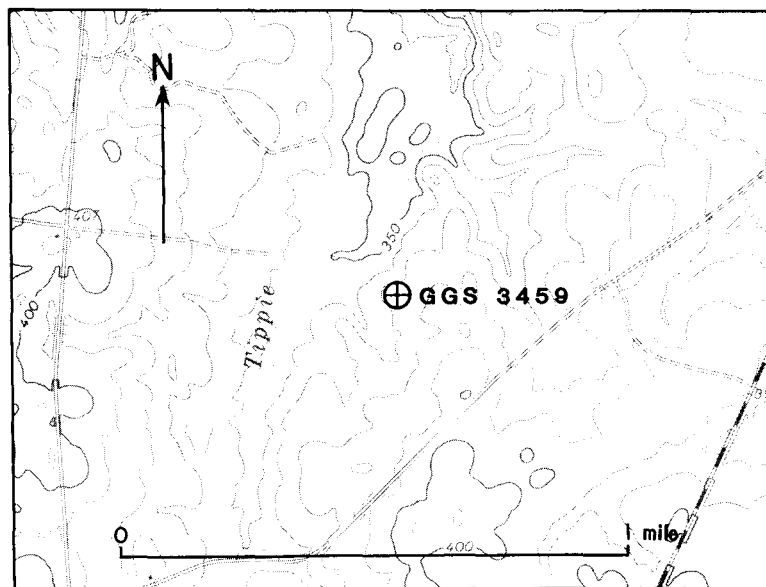


Contour Interval = 10 ft.

Operator: Southeastern Exploration and
Production Corporation - Sepco
Landowner: Triple C Farms, Inc. No. 1
Location: 4.5 miles S.W. of Davisboro
(Riddleville 7.5' Quadrangle).
Lat. 32°56'15"±2"N.
Long. 82°40'03"±2"W.

G.G.S. No. 3459
D.P. No. 113
Elevation: Approximately 373 ft. G.L.
Total Depth: 1109 ft.
Completed: Well open and bonded as of
publication date.

Remarks: Samples (50 ft. - 202 ft.). No logging was performed on this well.

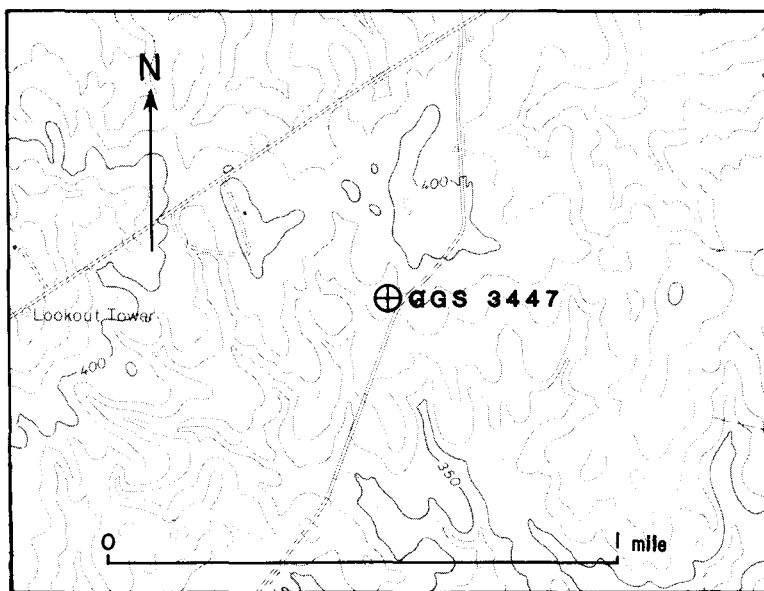


Contour Interval = 10 ft.

Operator: Southeastern Exploration and
Production Corporation - Sepco
Landowner: McCoy No. 1
Location: 4.5 miles S. of Davisboro
(Riddleville 7.5' Quadrangle).
Lat. 32°55'08"±2"N.
Long. 82°38'08"±2"W.

G.G.S. No. 3447
D.P. No. 114
Elevation: 382 ft. G.L.
392 ft. D.F.
393 ft. K.B.
Total Depth: 9386 ft.
Completed: December 19, 1984

Remarks: Fracture Identification Log - With Correlation Log (1201 ft. - 9368 ft.), Simultaneous Compensated Neutron - Formation Density (1201 ft. - 9372 ft.), Dual Induction - SFL (1201 ft. - 9379 ft.), Borehole Compensated Sonic Log (1201 ft. - 9376 ft.), Sonan (100 ft. - 5000 ft.), "mud" log (40 ft. - 9386 ft.), Sonan Epilog (3600 ft. - 5000 ft.) and samples (5100 ft. - 9400 ft.).



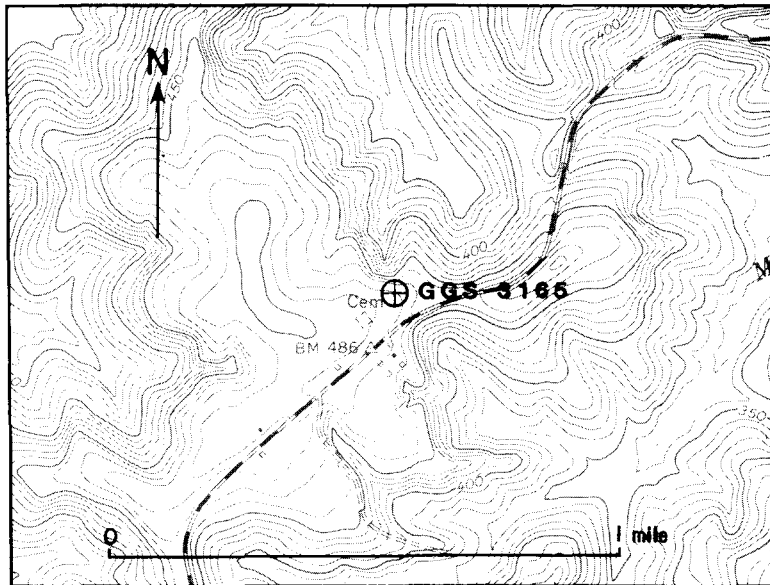
Contour Interval = 10 ft.

WILKINSON COUNTY

Operator: J.W. Whitaker
Landowner: W.I. Allen No. 1
Location: Approximately 8 miles
N.E. of Jeffersonville on Ga.
Highway 96 (Stuckey Boone Lake
7.5' Quadrangle).
Lat. 32°42'56"±5"N.
Long. 83°13'28"±5"W.

G.G.S. No. 3165
D.P. No. 105
Elevation: Approximately 480 ft. G.L.
Total Depth: Approximately 1600 ft.
Completed: March 31, 1982

Remarks: Brief petrographic description of cuttings (1478 ft. - 1508 ft.), water analysis, water/soil analysis and samples (95 ft. - 1600 ft.).

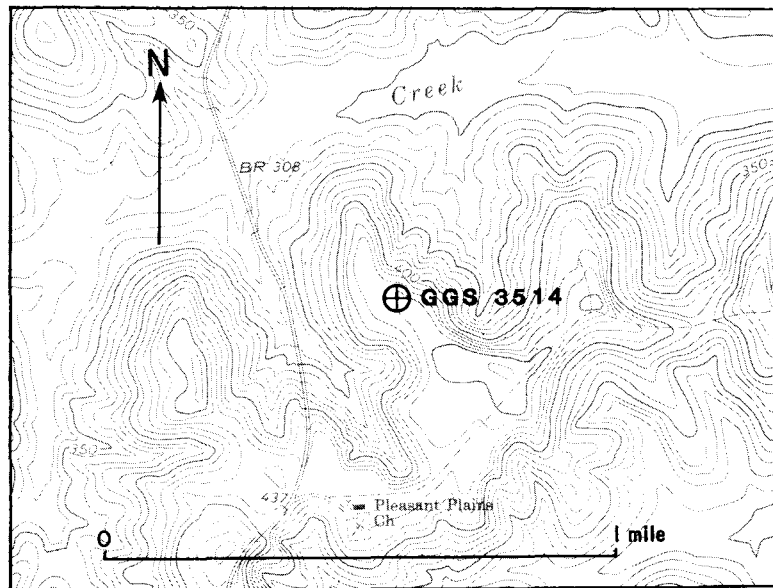


Contour Interval = 10 ft.

Operator: Southeastern Exploration and
Production Corporation - Sepco
Landowner: Belote No. 1
Location: Approximately 6.5 miles S.W. of
Irwinton (Stuckey Boone Lake
7.5' Quadrangle).
Lat. 32°43'03"±5"N.
Long. 83°11'28"±5"W.

G.G.S. No. 3514
D.P. No. 115
Elevation: Approximately
440 ft. G.L.
Total Depth: 1362 ft.
Completed: December 20, 1984

Remarks: Acoustic Velocity Log (73 ft. - 1048 ft.), Caliper Log (54 ft. - 1049 ft.), Caliper Log (3-Arm) (1086 ft. - 1358 ft.), Electric Log (Focused Guard) (1086 ft. - 1360 ft.), Electric Log (Focus) (102 ft. - 1050 ft.), Electric Log (Resistivity) (89 ft. - 1051 ft.), Electric Log (16 - 64 Normal) (1084 ft. - 1360 ft.), Density Log (35 ft. - 1053 ft.), Gamma Log (0 ft. - 1054 ft.), Natural Gamma Log (893 ft. - 1326 ft.), Gamma-Gamma Density Log (998 ft. - 1360 ft.), Neutron Log (47 ft. - 1056 ft.), Neutron Porosity Log (998 ft. - 1360 ft.), Temperature Log (1 ft. - 1057 ft.), and "mud" log (30 ft. - 1362 ft.).

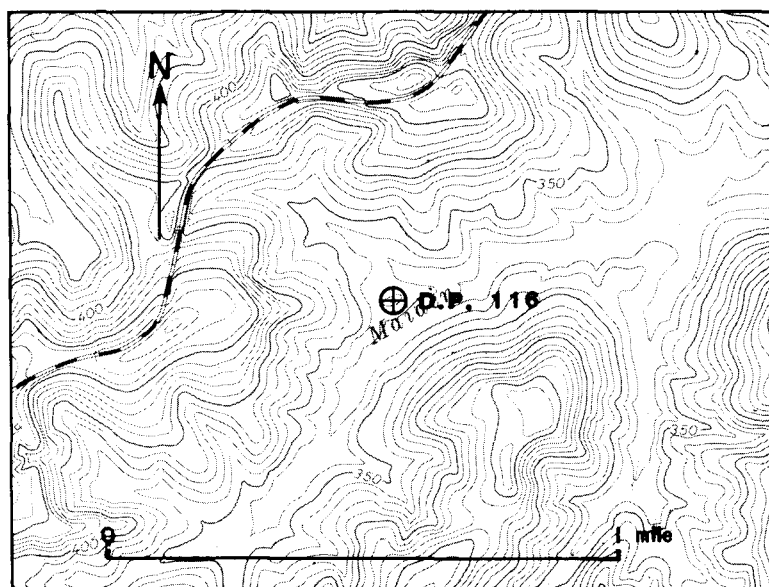


Contour Interval = 10 ft.

Operator: Southeastern Exploration and
Production Corporation - Sepco
Landowner: Georgia Kraft No. 1
Location: 8 miles E. of Jeffersonville
(Stuckey Boone Lake 7.5'
Quadrangle).
Lat. 32°43'02"±5"N.
Long. 83°12'41"±5"W.

G.G.S. No.
D.P. No. 116
Elevation: Approximately 345 ft. G.L.
Total Depth: See Remarks
Completed: See Remarks

Remarks: Well was not drilled.



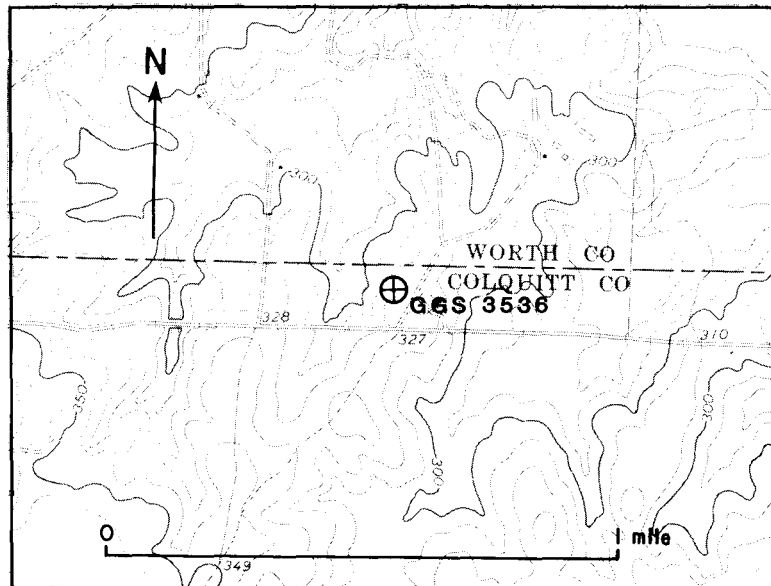
Contour Interval = 10 ft.

WORTH COUNTY

Operator: J.D. Simmons, Inc.
Landowner: Varner No. 1
Location: 4.5 miles N.W. of Norman Park
(Norman Park 7.5' Quadrangle).
330 ft. from S. line and 2648 ft.
from E. Line of Land Lot 18, Land
District 8.
Lat. 31°19'03"±2"N.
Long. 83°44'14"±2"W.

G.G.S. No. 3536
D.P. No. 127
Elevation: 310 ft. G.L.
315 ft. K.B.
Total Depth: 4200 ft.
Completed: January 13, 1984

Remarks: Dual Induction - SFL (462 ft. - 4202 ft.) and samples (180 ft. - 4200 ft.).



Contour Interval = 10 ft.
Note: County line in error. Should run along road to S. of well.

SOURCES

- Clark, W.Z., and Zisa, A.C., 1976, Physiographic map of Georgia: Georgia Geologic Survey. 1:2,000,000.
- Swanson, D.E., and Gernazian, A., compilers, 1979, Petroleum exploration wells in Georgia: Georgia Geologic Survey Information Circular 51, 67 p.
- Unpublished data on file at the Georgia Geologic Survey, Atlanta.

For convenience in selecting our reports from your bookshelves, they are color-keyed across the spine by subject as follows:

Red	Valley and Ridge mapping and structural geology
Dk. Purple	Piedmont and Blue Ridge mapping and structural geology
Maroon	Coastal Plain mapping and stratigraphy
Lt. Green	Paleontology
Lt. Blue	Coastal Zone studies
Dk. Green	Geochemical and geophysical studies
Dk. Blue	Hydrology
Olive	Economic geology
	Mining directory
Yellow	Environmental studies
	Engineering studies
Dk. Orange	Bibliographies and lists of publications
Brown	Petroleum and natural gas
Black	Field trip guidebooks
Dk. Brown	Collections of papers

Colors have been selected at random, and will be augmented as new subjects are published.

\$1450/500

The Department of Natural Resources is an equal opportunity employer and offers all persons the opportunity to compete and participate in each area of DNR employment regardless of race, color, religion, sex, national origin, age, handicap, or other non-merit factors.

EXPLANATION

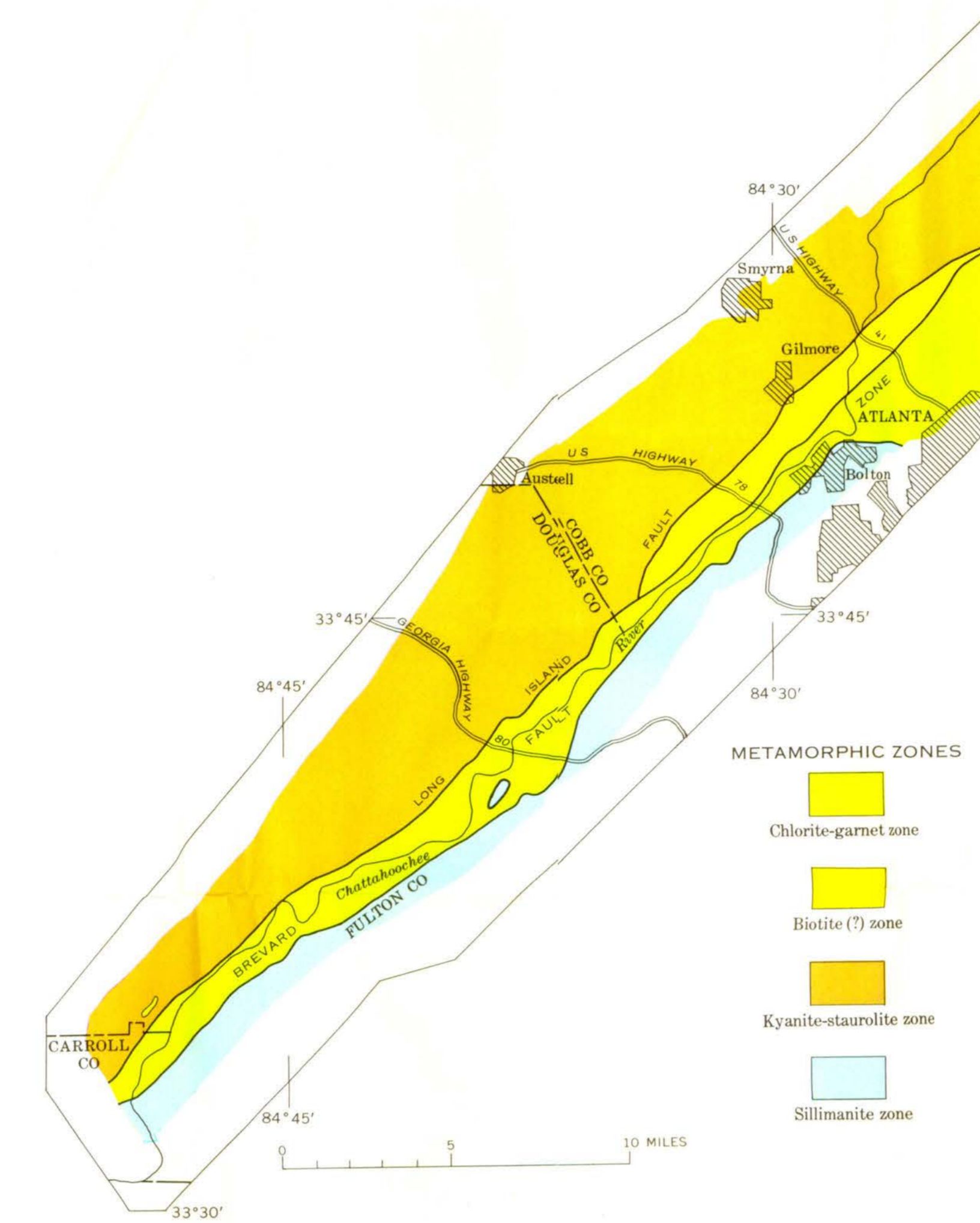
- QUATERNARY**
- Qa Alluvium
Sand, silt, clay, and gravel on floodplains and low terraces along modern streams
- ROCKS NORTHWEST OF THE BREVARD FAULT ZONE**
- um Ultramafic rocks
Altered ultramafic rocks composed principally of chlorite and amphibole. Contains generally concentric and glaucous to ochraceous quartz.
- METASEDIMENTARY ROCKS (Arranged in stratigraphic order)**
- us Upper quartzite unit
Massive to bedded quartzite containing small amounts of plagioclase, epidote, and opaque minerals.
 - msa Muscovite schist
Muscovite schist with locally abundant quartz and plagioclase.
 - ms Middle quartzite unit
Massive white, yellow, or blue gray to siliceous quartzite containing scattered mica and elongated garnet. Locally displays graded bedding. Fossils include *Leptaena* and *Strophomena*.
 - ls Lower quartzite unit
Massive white, yellow, or blue gray to siliceous quartzite containing scattered mica and elongated garnet. Locally displays graded bedding. Fossils include *Leptaena* and *Strophomena*.
- PRECAMBRIAN TO LOWER PALEOZOIC**
- gp Granite, schist, amphibolite, and associated rocks
Granite, schist, amphibolite, and associated rocks. Contains layers of quartz-muscovite schist and locally bedded and micaceous quartzite.
- METAGNEOUS(?) ROCKS (Stratigraphic position uncertain)**
- mg Metagranite
Granite gneiss containing conspicuous masses of microcline megacrysts rimmed by albite and quartz. Apatite (Corymbium) (Corymbium).

ROCKS IN THE BREVARD FAULT ZONE (No stratigraphic order implied)

- st Staurolite
Light-colored staurolite rock resembling chert and containing pertholite of Adams. Calcification features common in this variety. Crystals in place 1/2 inch to 20 feet thick and in irregular sheets along faults.
- mg Mylonite gneiss, breccia, and flinty crush rock
- pl Phyllonite
Lustrous green or gray green soap-sheeping rock containing scattered pertholite, quartz, and staurolite in a matrix of fine-grained quartz, mica, and chlorite.
- bs Basal schist
Basal schist containing staurolite, amphibole, and quartz. Contains the combined layers of quartz-muscovite schist and massive mica and layers of quartzite.
- ep Epiblastite-plagioclase gneiss
Dark gray coarse-grained mafic gneiss containing small rounded crystals of albite and a few small grains of garnet. Weathering yellow. Rock is well jointed and locally displays secondary structure. Contains the combined layers of quartz-muscovite schist and massive mica and layers of quartzite.

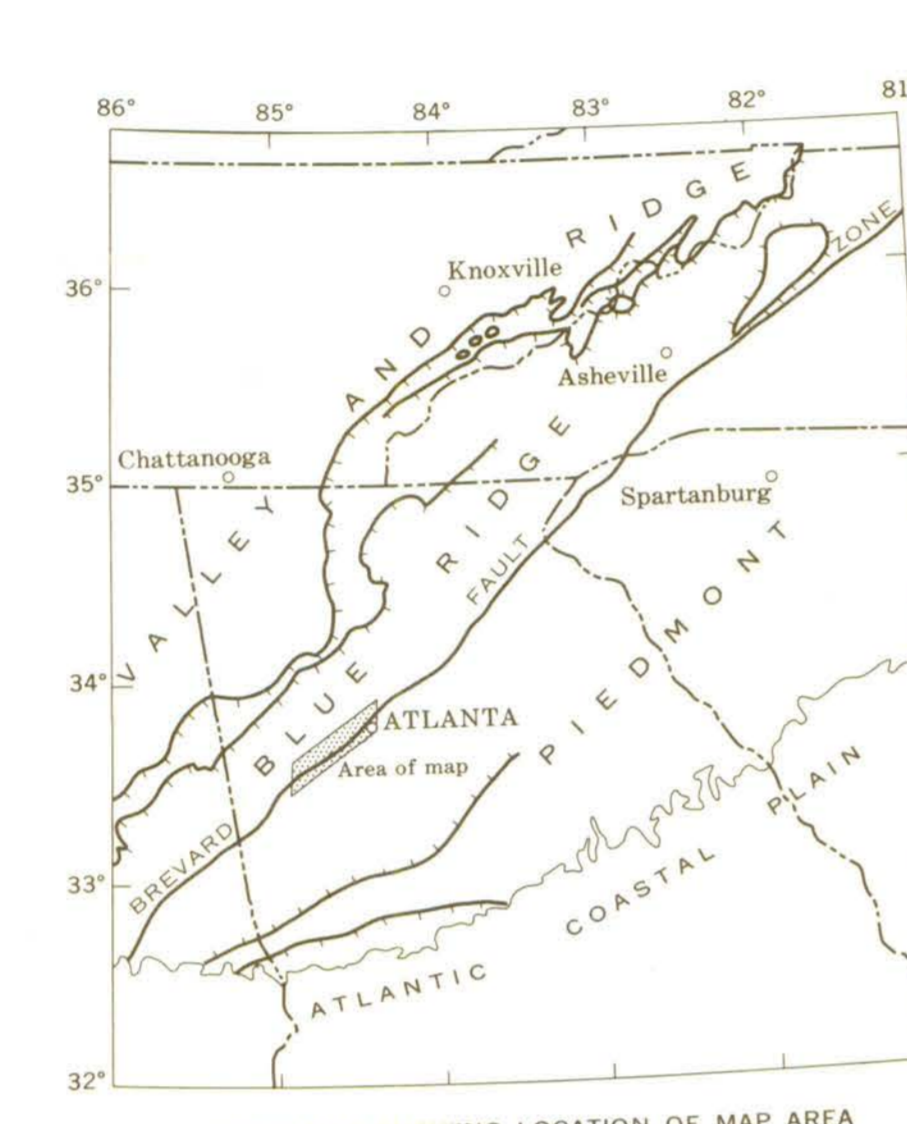
ROCKS SOUTHEAST OF THE BREVARD FAULT ZONE

- gr Granitic rocks
Medium to coarse-grained quartz-feldspar gneiss containing orthoclase phenocrysts as much as 2 cm long and inclusions of chlorite schist. Plagioclase type granitic of Corymbium (Corymbium). Locally abundant and strongly foliated granitic schist adjacent to the Brevard fault zone. Also occurs as isolated lenses within the fault zone.

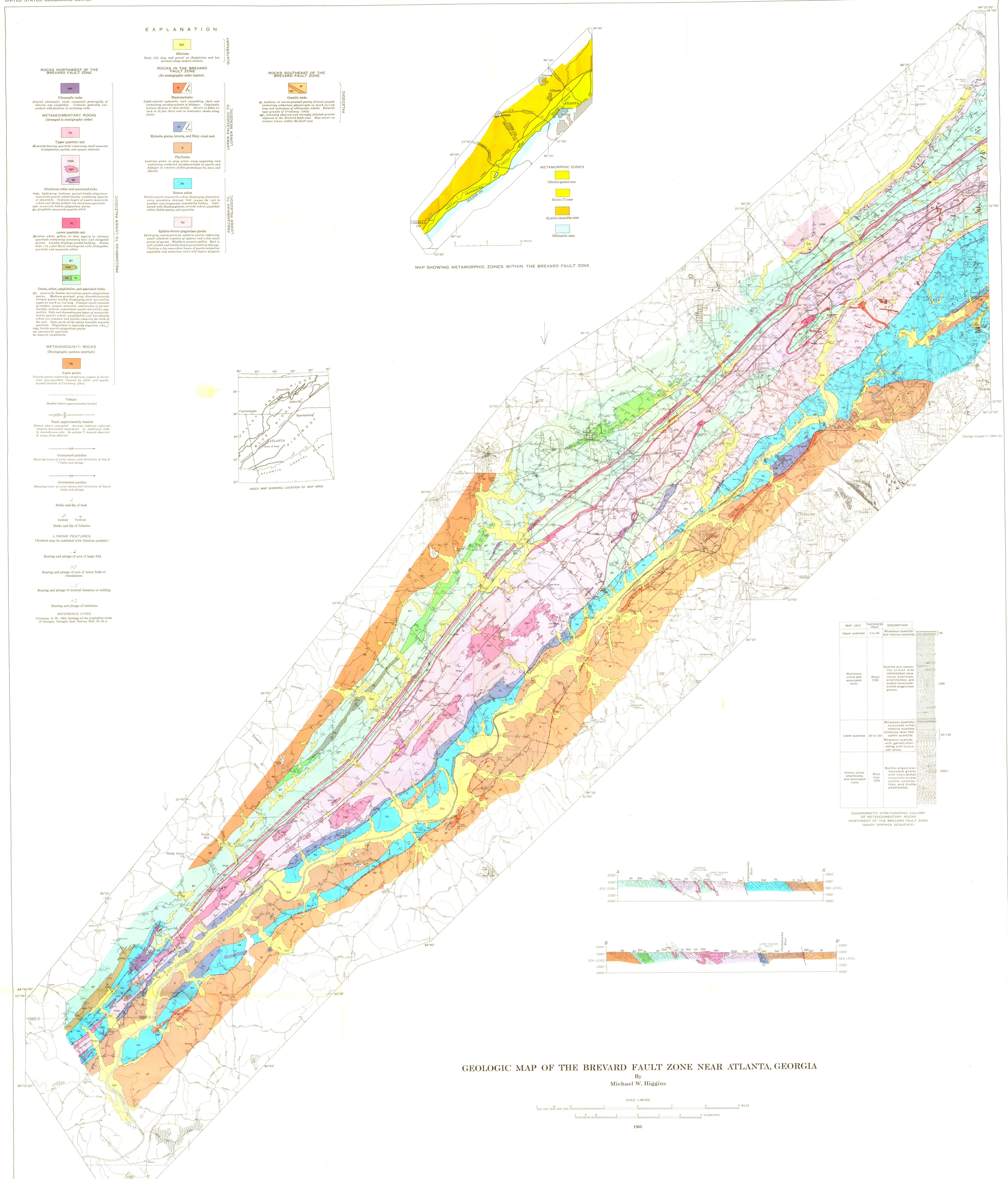


MAP SHOWING METAMORPHIC ZONES WITHIN THE BREVARD FAULT ZONE

- METAMORPHIC ZONES**
- Chlorite-garnet zone
 - Biitite (?) zone
 - Kyanite-staurolite zone
 - Sillimanite zone

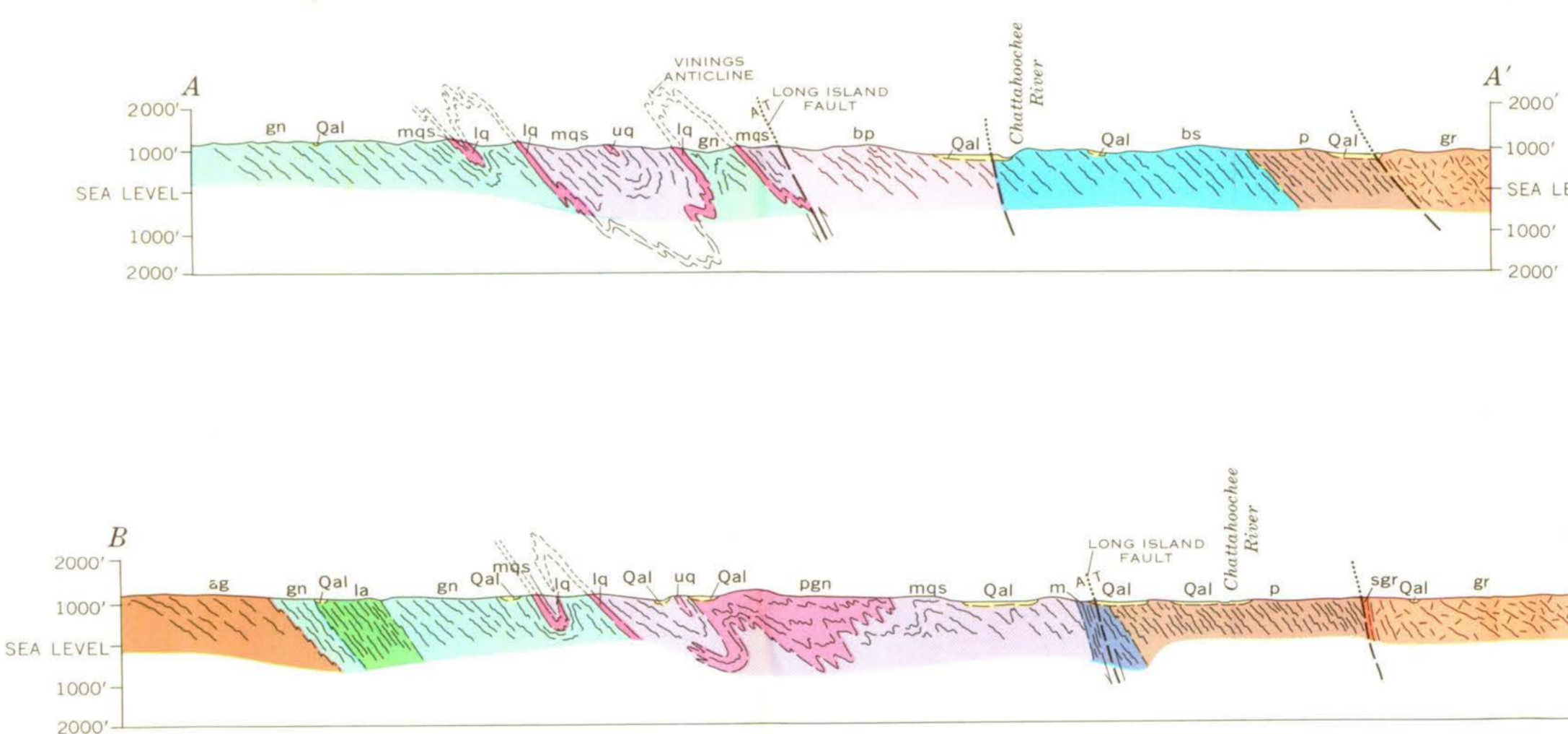


- CONTACT**
- Unconformity
 - Fault, approximately located
 - Overturned anticline
 - Overturned syncline
 - Strike and dip of beds
 - Vertical
 - Strike and dip of foliation
- LINEAR FEATURES**
- Bearing and plunge of axis of large fold
 - Bearing and plunge of axis of minor folds or crenulations
 - Bearing and plunge of mineral lineation or rodding
 - Bearing and plunge of striations
- REFERENCE CITED**
- Cookman, G. W., 1952, Geology of the crystalline rocks of Georgia. Georgia Geol. Survey Bull. 58, 14 p.

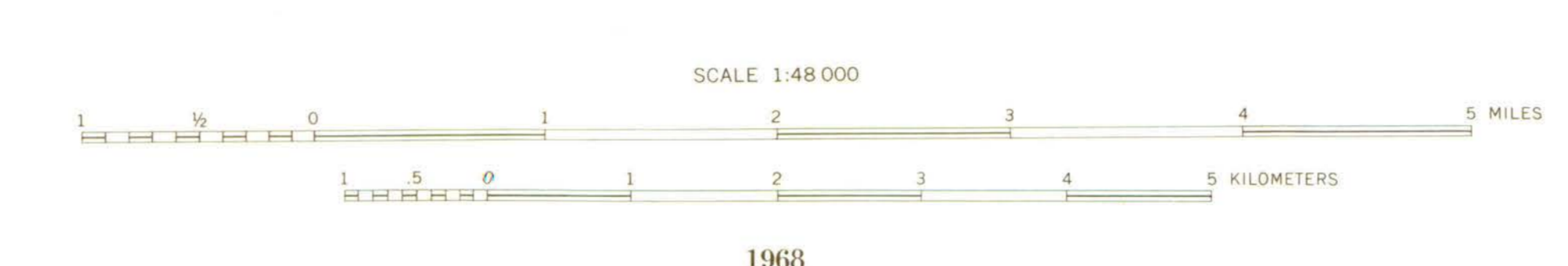


MAP UNIT	THICKNESS (feet)	DESCRIPTION
Upper quartzite	0 to 40	Muscovite quartzite and massive quartzite
Aluminous schist and associated rocks	About 1500	Kyanite and staurolite schist with interbedded muscovite quartzite, amphibolites, and quartz-muscovite biitite-plagioclase gneiss.
Lower quartzite	20 to 130	Muscovite quartzite, massive schist, massive quartzite, Ocherous layer, field-splint quartzite. Muscovite quartzite with garnet alternating with muscovite schist.
Granite, schist, amphibolite, and associated rocks	More than 1000	Biitite-plagioclase mafic gneiss with intercalated muscovite biitite schist, amphibolites, and biitite amphibolites.

DIAGRAMMATIC STRATIGRAPHIC COLUMN OF METASEDIMENTARY ROCKS NORTHWEST OF THE BREVARD FAULT ZONE (SANDY SPRINGS SEQUENCE)



GEOLOGIC MAP OF THE BREVARD FAULT ZONE NEAR ATLANTA, GEORGIA
By Michael W. Higgins



PETROLEUM EXPLORATION WELLS IN GEORGIA 1979-1984

