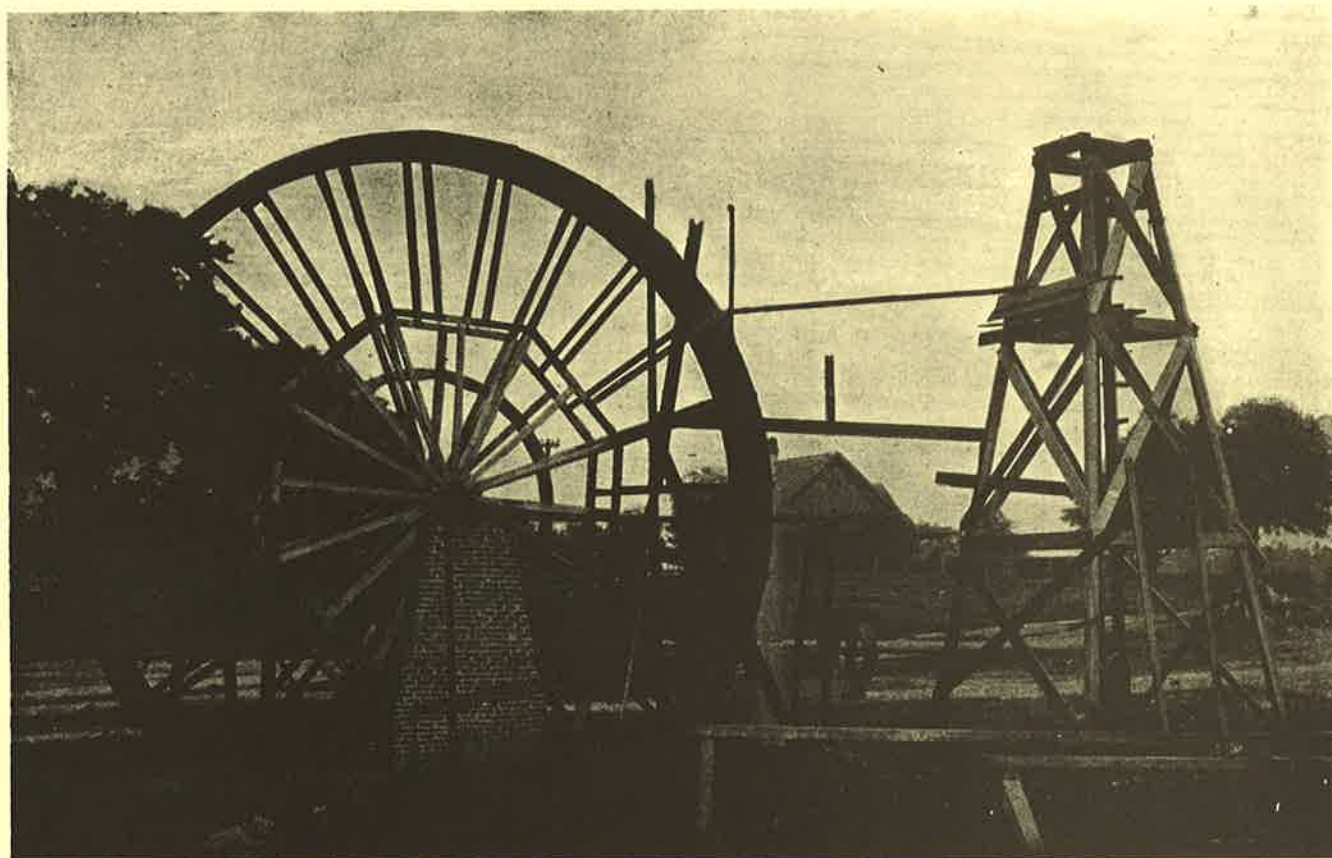


# WATER USE IN GEORGIA BY COUNTY FOR 1985

by

Mary C. Turlington, Julia L. Fanning, and Glenn A. Doonan



Department of Natural Resources  
Environmental Protection Division  
Georgia Geologic Survey

Prepared in cooperation with the U.S. Geological Survey

INFORMATION CIRCULAR **81**

**Cover: Artesian well at Midville, Burke County, used to operate a small electric plant.**

**Photo reprinted from McCallie, S.W., 1908, A preliminary report on the underground waters of Georgia: Geological Survey of Georgia Bulletin No. 15, Plate XIX**

# **WATER USE IN GEORGIA BY COUNTY FOR 1985**

by

**Mary C. Turlington, Julia L. Fanning,**

and

**Glenn A. Doonan**

**DEPARTMENT OF NATURAL RESOURCES  
J. Leonard Ledbetter, Commissioner**

**ENVIRONMENTAL PROTECTION DIVISION  
Harold F. Reheis, Assistant Director**

**GEORGIA GEOLOGIC SURVEY  
William H. McLemore, State Geologist**

**Prepared In Cooperation with the U.S. Geological Survey**

**Atlanta**

**1987**

**INFORMATION CIRCULAR 81**



## CONTENTS

	Page
Introduction . . . . .	1
Statewide water use . . . . .	4
Water-use categories . . . . .	5
Selected references . . . . .	11
State totals . . . . .	13
County totals . . . . .	17
Water use by county . . . . .	23
Appendix . . . . .	105

## ILLUSTRATIONS

Figure 1. Diagram showing water use in Georgia by categories. . . . .	4
2. Maps showing amounts of water withdrawn by county, 1985 . . . . .	6
3. Map showing counties and physiographic provinces in Georgia . . . . .	7

## TABLES

Table 1. Data sources for estimating water use . . . . .	3
2. State totals . . . . .	13
3. County totals . . . . .	17
4. Water use by county . . . . .	23



WATER USE IN GEORGIA  
BY COUNTY FOR 1985

By

Mary C. Turlington, Julia L. Fanning,<sup>1</sup> and Glenn A. Doonan<sup>1</sup>

INTRODUCTION

The demand for Georgia's water resources necessitates careful planning and management to ensure adequate supplies for all users. To make informed decisions for water allocations, water managers need comprehensive data on water use in Georgia. Under the Georgia Water-Use Program, a cooperative project of the Georgia Geologic Survey Branch of the Georgia Environmental Protection Division (EPD) and the U.S. Geological Survey, water-use information is collected annually about all major categories of water users in the State. Water-use data are obtained from EPD and other sources (table 1) and compiled into a computerized data base. The data base includes information on withdrawals, amounts of wastewater discharged into streams, maximum permitted withdrawals, water sources, and locations of withdrawal and discharge sites. By storing all water-use data in a centralized data base, the Georgia Water-Use Program can provide the information required by water managers, hydrologists, and other scientists.

Cities, industries, and other nonagricultural users of more than 100,000 gallons per day (gal/d) are required to obtain withdrawal permits from EPD. Most of the data in this report were compiled from monthly withdrawal amounts reported by permitted users. For users that failed to report actual use, the maximum permitted withdrawals were substituted. Where 1985 data were unavailable, data from earlier years were used.

---

1 U.S. Geological Survey

In addition to collecting data from permitted users, withdrawals by small users are estimated every 5 years under the Georgia Water-Use Program. Estimates for water use by livestock, rural households, and small businesses and industries are needed for determining total water use for the State.

This report follows the same general format as the water-use report for 1980 published by Pierce and others (1982). The water-use tables (table 4) on pages 23-104 show surface-water and ground-water withdrawals for each county in the State. County population, population served by public supply, acres irrigated, and hydroelectric in-stream use also are listed. Below each county table is a list of major municipal, county, and private water systems. Water use by major industrial groups, as defined in the Standard Industrial Classification Manual (SIC codes), also is shown. Military bases, small industries, and small water suppliers (subdivisions, mobile home parks, and small towns) are not listed individually but their withdrawals are included in the county totals.

Discrepancies between the 1985 estimates (tables 3 and 4) and the 1980 estimates reported by Pierce and others (1982) resulted from different data sources and methods used to calculate estimates. Decreased water use reported for some categories may not reflect lower use, but result from improved accuracy in the data. For example, much of the 1980 estimates of surface-water withdrawals were based on maximum permitted quantities, which tend to be higher than actual withdrawals. The 1985 estimates are based mainly on reported withdrawals. Overall, the 1985 data are more complete than the 1980 data.

Estimated water consumed by category, deliveries from water suppliers, and other water-use information by county and river basin have been determined under the Georgia Water-Use Program. These data are not included in this report but are available upon request from the Georgia Geologic Survey and the U.S. Geological Survey.

In some instances, more water was actually used in a county than was withdrawn. For example, Fayette County, which is part of metropolitan Atlanta, had withdrawals of 1.62 million gallons per day (Mgal/d). In 1985, Fayette County's water supply was augmented by purchases of water from Atlanta.



**Table 1. - Data Sources for Estimating Water Use**

<b>WATER USE CATEGORY</b>	<b>DATA SOURCE</b>	<b>TYPE OF DATA PROVIDED</b>
Public Supply	Permit files, Water Resources Management Branch (WRMB), Environmental Protection Division (EPD)	Withdrawals by permitted users
	Operators of large municipal systems (mail survey)	Population served, interconnection of systems
	Ground Water Program, WRMB, EPD	Population served by small public suppliers (subdivisions and mobile home parks)
Domestic	U.S. Bureau of the Census	County and city populations
Commercial	Permit files, WRMB, EPD	Withdrawals by permitted users
	1980 inventory of small users (< 100,000 gal/d) by Ground Water and Surface Water Programs, EPD	Estimated water use
Industrial	Permit files, WRMB, EPD	Withdrawals by permitted users
Livestock	Georgia Crop Reporting Service Georgia Dept. of Agriculture Cooperative Extension Service U.S. Bureau of the Census	Animal populations by county
Irrigation	Cooperative Extension Service 1984 Irrigation Survey	Crop acreage and inches applied by county
Thermoelectric Power Generation	Permit files, WRMB, EPD	Withdrawals by thermoelectric power plants
	Power companies	Withdrawals by power plants
Hydroelectric Power Generation	Plant owners	In-stream use by hydroelectric facilities

## STATEWIDE WATER USE

An average of 5.4 billion gallons of water was withdrawn each day from Georgia's streams, lakes, and aquifers in 1985 (fig.1). An additional 40 billion gallons per day was used in-stream to generate hydroelectric power. Withdrawals of surface water totaled 4.4 billion gallons per day. Three-fourths of the withdrawn surface water was used for thermoelectric power generation. Ground water from wells and springs supplied 1 billion gallons per day. Irrigation and industry were the largest users of ground water.

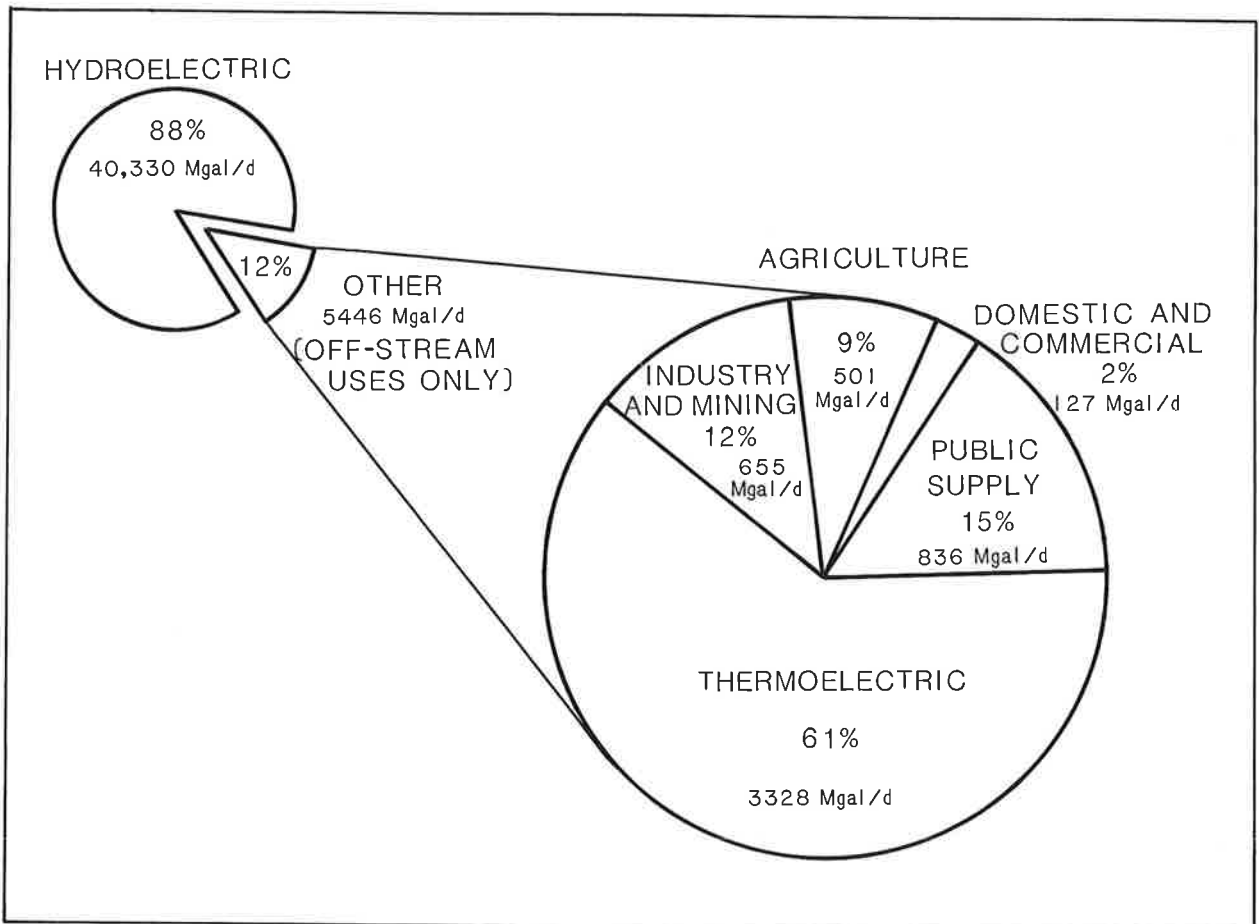


Figure 1. - Water use in Georgia by categories. Numbers are rounded.

The maps in figure 2 show withdrawals of surface water, ground water, and all sources of water by county. Most of the high-use areas, where withdrawals are more than 60 Mgal/d, are counties containing thermoelectric plants. Exceptions are DeKalb and Fulton counties, which withdraw large amounts for public supply and Glynn, Early, and Wayne counties, which primarily supply industries.

Total water use in Georgia declined 20 percent from 1980 to 1985. Most of this decline was due to a 25-percent reduction in withdrawals by thermoelectric facilities, a decline of 1.1 billion gallons per day. During that same period, industrial and irrigation withdrawals decreased approximately 20 percent and use by public suppliers and livestock increased.

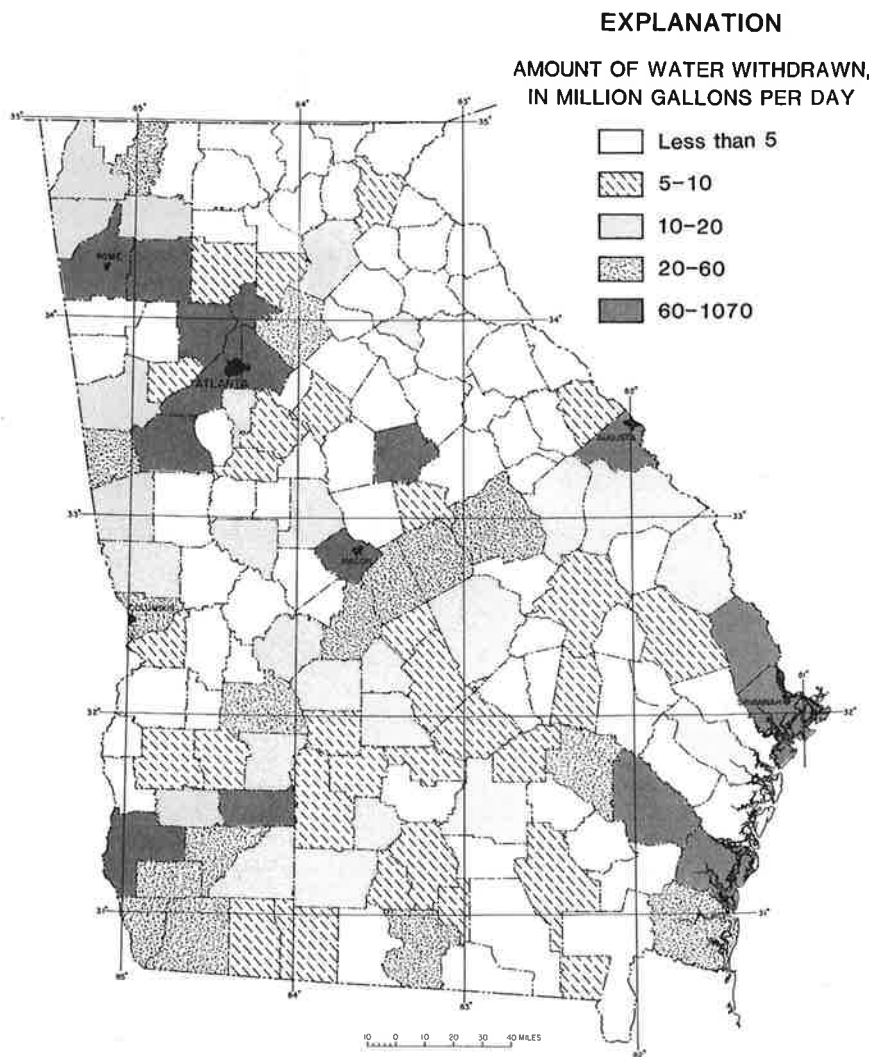
## WATER-USE CATEGORIES

### **PUBLIC SUPPLY**

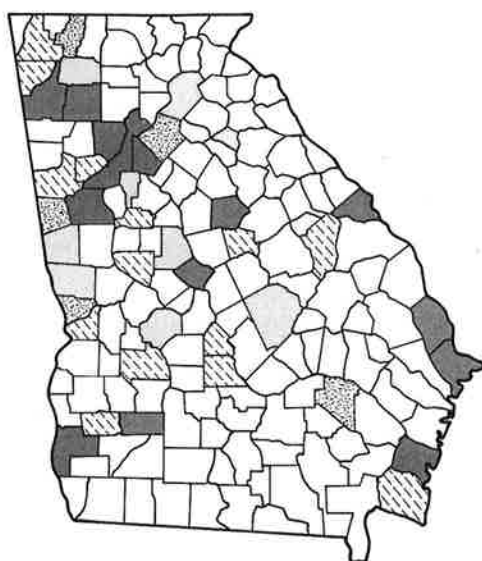
The public-supply category includes water withdrawn by public and private water suppliers and delivered to users. Small communities and subdivisions that furnish water to at least 25 people, or that have a minimum of 15 hookups, are considered to be public-supply systems. Public suppliers provide water for a variety of uses such as domestic, commercial, and industrial.

The EPD Water Resources Management Branch provided data on the total amount of water withdrawn from ground-water and surface-water sources. A mail survey of the 74 largest public water suppliers provided data on the populations served and (or) the number of connections for each. The public suppliers surveyed account for 85 percent of the total public supply in the State. Information for small systems was obtained by direct contact.

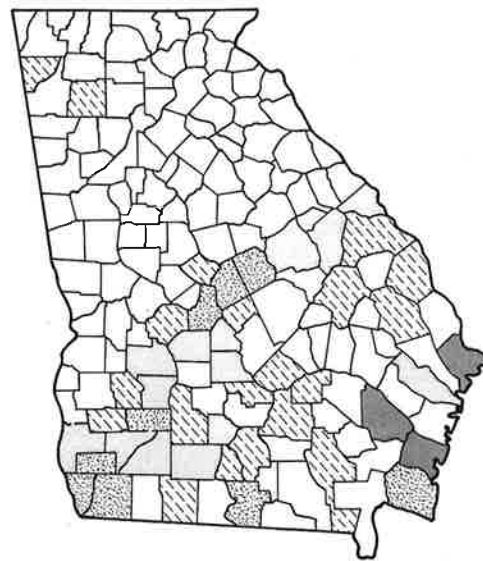
Surface water accounted for 75 percent of water withdrawn for public supply in Georgia in 1985. Most of the large public suppliers are in the Piedmont physiographic province (fig. 3). In general, public-supply withdrawals correspond to population totals. Exceptions are suppliers in Whitfield and Gordon Counties, which furnish water for textile and carpet manufacturing, and Savannah, where half of the public supply is used by various industries.



**ALL SOURCES OF WATER**



**SURFACE WATER**



**GROUND WATER**

Figure 2. - Amounts of water withdrawn by county, 1985.

APPALACHIAN  
PLATEAU



Figure 3. - Counties and physiographic provinces in Georgia.

## **SELF-SUPPLIED DOMESTIC AND COMMERCIAL**

Domestic use is defined as water used for normal household purposes. The number of self-supplied domestic water users was estimated by subtracting from county populations (1985 estimates, U.S. Bureau of the Census) the number of persons served by public systems. The 1980 domestic use estimate was based on 100 gallons per person per day. A survey of subdivisions in the Athens area in 1983 revealed that on the average, each person used 75 gallons of water per day. This estimate was multiplied by the self-supplied population to obtain the total self-supplied domestic water use in 1985. Some small towns that lack public systems were considered to have 100 percent domestic use. Self-supplied households in Georgia are assumed to use only ground water (from wells and springs).

Commercial users include restaurants, hotels, retail stores, and other businesses; government and military facilities; prisons, schools, hospitals, and other institutions; and recreational facilities. Self-supplied commercial users withdrew approximately 28 Mgal/d in 1985. Because only a few commercial users withdraw enough water to require permits, the reporting of actual commercial use is minimal. EPD provided a list of commercial users that produced their own water supply in 1986 and an estimate of commercial withdrawals for 1980. These data were compared to provide estimates of 1985 commercial use.

In this report, self-supplied commercial water use is included in the domestic category, but in the report for 1980 (Pierce and others, 1982) it was included in the public-supply category.

## **SELF-SUPPLIED INDUSTRY AND MINING**

Self-supplied industries in Georgia withdrew an estimated 656 Mgal/d of water in 1985. This is 170 Mgal/d less than the 1980 estimate of 826 Mgal/d, partly because of conservation efforts and economic pressures to reduce usage. Moreover, the 1980 estimates probably were high because many were based on maximum permitted amounts rather than reported amounts. For 1985, nearly all of the estimated industrial use was compiled from reported withdrawals.

The largest water users in the State are paper companies, which are concentrated in the coastal counties. Other major users are the textile industry (which accounts for the heavy use in northwest Georgia), chemicals production, and mining and mineral production.

Mining and mineral processing used 77 Mgal/d in 1985 (table 2), mostly for kaolin production. Granite, clay, marble, and other materials are mined extensively in Georgia,

but the operations do not require large quantities of water. The mining withdrawals were obtained from the EPD permit files, reports by mining companies, and estimates based on average water requirements per ton mined.

## AGRICULTURE

Estimates of irrigation use are based on a 1984 irrigation survey conducted by the University of Georgia's Cooperative Extension Service (Harrison and Tyson, 1985). The data, which were supplied by the County Agents, include crop acreage and inches of water applied by crop for each county in the State. Acres and inches of water were converted to gallons for this report. The survey also showed water-source data for estimating percentages of ground-water and surface-water use. The 1984 irrigation survey was the most complete source available, and because rainfall and economic factors in 1984 were similar to those in 1985, it is assumed that the irrigation use also was similar.

Water use for crops, large nurseries, athletic fields, and golf courses is included in the irrigation category. In counties where irrigation is used predominantly for golf courses and athletic fields, the water use per acre tends to be very high (about 2,000 gal/d per acre). The irrigation estimates are averages for the year, so irrigation use during the growing season may be considerably higher than the annualized averages.

In 1982, the Georgia Legislature enacted a law that requires owners of any irrigation system(s) using more than 3 million gallons per month to report irrigation water use. This information is sent to EPD and is maintained in a computerized data base as part of the Georgia Water-Use Program. The Georgia Irrigation Reporting Program presently is the only source of annual site-specific water-use data available for irrigation systems. However, the data are incomplete and insufficient for calculating statewide water-use estimates.

Irrigation withdrawals in Georgia increased dramatically during the last decade, from 47 Mgal/d in 1970 to 577 Mgal/d in 1980 (Pierce and others, 1982). Irrigation withdrawals in 1985 were 21 percent less than in 1980, partly because of increases in rainfall. Irrigation use now accounts for over half of the consumptive water use in the State. Most irrigation occurs in the Coastal Plain and is especially prevalent in the southwestern part of the State, where it comprises more than 95 percent of the total water used in some counties.

Estimates of water withdrawals by livestock were compiled by animal types: cattle, pigs and hogs, horses, and several kinds of poultry. The 1985 estimates include water withdrawn for catfish farming. The large increase in livestock withdrawals is primarily the result of cat-

fish farming. Water-use estimates were calculated by multiplying animal populations in each county by the average water requirement for each animal type. The water sources for livestock use are unknown; therefore, the proportions of ground-water and surface-water withdrawals were estimated from other use categories in each county.

### **POWER GENERATION**

The thermoelectric category includes all self-supplied fossil fuel and nuclear facilities. In Georgia there are 17 thermoelectric plants that operate on oil, coal, and natural gas and two nuclear plants.

The EPD Water Resources Management Branch collects data on the amounts of water treated for potable use and boiler make up. Inquiries were made directly to plant operators for withdrawal quantities. The Department of Energy's monthly power plant report (EIA-759) was the source of power generation data.

A survey of hydroelectric plant owners provided the number of gallons used by each plant to generate a megawatt hour of electricity, which was used to determine the amount of power generated and monthly water-use figures in million gallons per day. The Westinghouse Hanford Laboratories report on hydroelectric power (written commun., 1986) was used to verify the accuracy of the data.

Power generation is the largest water-use category in the State, with withdrawals of 3,272 Mgal/d for thermoelectric, 56 Mgal/d for nuclear, and 40,330 Mgal/d for hydroelectric. The percentage of water consumed varies from near 0 percent for the hydroelectric plants to near 100 percent for some thermoelectric plants. Only 4 percent of all water withdrawn for power generation is consumed.



## SELECTED REFERENCES

- Carter, R.F., and Johnson, A.M.F., 1974, Use of water in Georgia, 1970, with projections to 1990: Georgia Geologic Survey Hydrologic Report 2, 74 p.
- Executive Office of the President, Office of Management and Budget, 1972, Standard Industrial Classification Manual: 649 p.
- Fanning, J.L., 1985, The Georgia Water-Use Program: U.S. Geological Survey Open-File Report 85-481, pamphlet.
- Harrison, Kerry, and Tyson, A.W., 1985, 1984 irrigation survey: Athens, Ga., University of Georgia Cooperative Extension Service.
- Lewis, George, 1984, Catfish farming in Georgia: Athens, GA., University of Georgia Cooperative Extension Service.
- Murray, C.R., and Reeves, E.B., 1977, Estimated use of water in the United States in 1975: U.S. Geological Survey Circular 765, 39 p.
- Pierce, R.R., and Barber, N.L., 1982, Water use in Georgia 1980: A summary report: Georgia Geologic Survey Circular 4-A, 17 p.
- Pierce, R.R., Barber, N.L., and Stiles, H.R., 1982, Water use in Georgia by county, for 1980: Georgia Geologic Survey Information Circular 59, 180 p.
- Pullin, Debra, ed., 1970, Horse and pony survey: Georgia Department of Agriculture, 9 p.
- Solley, W.B., Chase, E.B., and Mann, W.B., 1983, Estimated use of water in the United States in 1980: U.S. Geological Survey Circular 1001, 56 p.
- Steele, W.M., and O'Connor, B.J., 1986, Mining directory of Georgia, 19th ed.: Georgia Geologic Survey Circular 2, 54 p.
- Strong, C.F., and Wildey, H.E., 1986, A summary of the 1985 poultry survey by Georgia county agents: Athens, GA., University of Georgia Cooperative Extension Service, 34 p.
- U.S. Bureau of the Census, 1982, 1980 Census of population: Number of Inhabitants, Georgia: 53 p.
- U.S. Department of Agriculture Crop Reporting Service, 1980, Georgia Agricultural Facts 1978-1979: Georgia Department of Agriculture, 98 p.



**STATE TOTALS**

**TABLE 2**



## GEORGIA

Population: 5,976,100  
 Population served by public supply: 4,664,000  
 Acres irrigated: 1,096,470  
 Hydroelectric use (Mgal/d): 40,330

WITHDRAWALS IN MILLION GALLONS PER DAY							
	Public Supply	Domestic & Commercial	Industry & Mining	Irrigation	Livestock	Thermo-electric	TOTALS
Ground Water	204.95	122.11	338.73	308.49	25.45	4.96	1004.69
Surface Water	630.85	4.57	316.43	144.92	21.92	3322.62	4441.31
TOTALS	835.80	126.68	655.16	453.41	47.37	3327.58	5446.00

### Withdrawals by Major Industrial Groups (Mgal/d):

SIC	GW	SW
14 Mining	16.09	2.87
16 Construction	0.15	0.00
20 Food	15.29	0.45
22 Textiles	16.95	38.21
23 Apparel	0.38	0.00
24 Lumber	0.63	0.01
26 Paper	124.26	244.01
28 Chemicals	105.88	25.08
29 Petroleum	1.80	0.00
30 Rubber	1.55	1.00
31 Leather	0.00	0.16
32 Stone, Clay	53.60	4.16
33 Primary Metals	0.80	0.48
34 Metal Products	0.45	0.00
35 Machinery, ex. Elec	0.22	0.00
36 Electrical Machinery	0.10	0.00



**COUNTY TOTALS**

**TABLE 3**





WITHDRAWALS IN MILLION GALLONS PER DAY							
COUNTY	Public Supply	Domestic & Commercial	Industry & Mining	Irrigation	Livestock	Thermo-Electric	TOTALS
Appling	0.89	0.75	0.15	1.15	0.23	55.39	58.56
Atkinson	0.35	0.22	0.00	1.54	0.32	0.00	2.43
Bacon	0.56	0.41	0.48	1.64	0.11	0.00	3.20
Baker	0.10	0.21	0.00	21.51	0.12	0.00	21.94
Baldwin	4.80	2.90	0.33	0.00	0.08	0.00	8.11
Banks	0.11	0.81	0.06	0.07	0.35	0.00	1.40
Barrow	2.41	0.84	0.10	0.10	0.79	0.00	4.24
Bartow	8.06	1.22	5.45	0.25	0.25	58.52	73.75
Ben Hill	2.69	0.28	0.00	3.30	0.17	0.00	6.44
Berrien	0.36	0.51	0.71	6.80	0.16	0.00	8.54
Bibb	30.09	2.16	4.76	2.12	0.18	189.21	228.52
Bleckley	0.67	0.50	0.00	6.22	0.08	0.00	7.47
Brantley	0.23	0.58	0.97	0.23	0.10	0.00	2.11
Brooks	1.56	0.63	0.00	2.46	0.33	0.00	4.98
Bryan	0.67	0.49	0.01	0.00	0.37	0.00	1.54
Bulloch	1.32	1.49	0.80	5.06	0.28	0.00	8.95
Burke	1.51	0.94	0.00	8.35	0.19	8.01	11.94
Butts	1.25	0.77	0.00	0.00	0.07	0.00	2.09
Calhoun	0.63	0.09	0.00	13.75	0.08	0.00	14.55
Camden	1.38	3.32	39.09	0.07	0.02	0.00	43.88
Candler	0.63	0.29	0.00	3.45	0.17	0.00	4.54
Carroll	6.86	2.47	0.13	0.35	0.48	0.00	10.29
Catoosa	3.11	0.64	0.00	0.29	0.13	0.00	4.17
Charlton	0.67	0.38	0.27	0.06	0.04	0.00	1.42
Chatham	63.87	2.71	75.82	1.86	0.03	354.38	498.25
Chattahoochee	6.63	0.21	0.00	0.00	0.01	0.00	6.85
Chattooga	3.04	0.79	10.29	0.03	0.13	0.00	14.28
Cherokee	2.76	3.65	0.31	0.30	0.48	0.00	7.50
Clarke	14.54	0.94	0.00	0.00	0.10	0.00	15.58
Clay	0.13	0.12	0.00	2.18	0.07	0.00	2.50
Clayton	16.98	0.22	0.00	0.02	0.02	0.00	17.24
Clinch	0.34	0.25	0.03	0.48	0.02	0.00	1.12
Cobb	65.06	0.57	0.84	2.13	0.05	381.28	449.93
Coffee	3.51	0.93	0.00	6.58	0.45	0.00	11.47
Colquitt	3.65	0.65	1.30	11.95	0.45	0.00	18.00
Columbia	6.10	1.21	0.00	0.08	0.07	0.00	7.46
Cook	3.84	0.45	0.00	2.01	0.11	0.00	6.41
Coweta	3.46	2.03	0.56	0.06	0.12	430.00	436.23
Crawford	0.13	0.50	0.00	0.58	1.87	0.00	3.08
Crisp	1.93	1.06	0.04	3.00	0.11	2.20	8.34
Dade	1.23	0.05	0.00	0.00	0.06	0.00	1.34
Dawson	0.09	0.42	0.00	0.00	0.20	0.00	0.71
Decatur	2.14	1.33	2.30	34.45	0.23	0.00	40.45
DeKalb	68.64	0.88	0.00	1.24	0.04	0.00	70.80
Lodge	0.93	0.75	0.14	3.94	0.15	0.00	5.91
Dooly	1.09	0.37	0.00	12.16	0.10	0.00	13.72
Dougherty	17.39	1.53	13.64	5.58	0.18	178.23	216.55
Douglas	5.12	0.37	0.00	0.40	0.38	0.00	6.27
Early	0.86	0.52	107.81	12.11	0.19	0.00	121.49
Echols	0.06	0.13	0.00	0.45	0.25	0.00	0.89
Effingham	0.73	1.08	0.00	0.29	0.58	101.27	103.95
Elbert	1.56	0.84	0.02	0.24	0.14	0.00	2.80
Emanuel	1.55	0.75	0.20	6.00	0.17	0.00	8.67
Evans	0.45	0.22	0.72	0.69	0.08	0.00	2.16
Fannin	0.82	0.52	0.00	0.00	0.05	0.00	1.39

WITHDRAWALS IN MILLION GALLONS PER DAY							TOTALS
COUNTY	Public Supply	Domestic & Commercial	Industry & Mining	Irrigation	Livestock	Thermo-Electric	
Fayette	0.70	0.76	0.01	0.08	0.07	0.00	1.62
Floyd	8.98	1.15	24.64	2.45	0.20	434.66	472.08
Forsyth	3.05	1.61	0.00	0.09	0.71	0.00	5.46
Franklin	1.35	0.56	0.00	0.07	0.61	0.00	2.59
Fulton	134.29	1.91	0.13	0.97	0.09	0.00	137.39
Gilmer	1.23	0.63	0.00	0.00	1.62	0.00	3.48
Glascock	0.10	0.11	0.03	0.05	0.04	0.00	0.33
Glynn	10.91	2.41	86.41	1.30	2.21	45.88	149.12
Gordon	10.50	0.91	0.02	0.06	0.53	0.00	12.02
Grady	2.17	0.90	0.08	2.39	0.29	0.00	5.83
Greene	0.91	0.42	0.40	0.02	0.16	0.00	1.91
Gwinnett	37.60	0.19	0.17	1.96	0.16	0.00	40.08
Habersham	4.19	0.94	0.06	0.00	0.62	0.00	5.81
Hall	11.53	1.84	1.52	1.05	1.03	0.00	16.97
Hancock	0.49	0.46	0.01	0.18	0.05	0.00	1.19
Haralson	1.33	0.09	0.00	0.05	0.23	0.00	1.70
Harris	0.63	0.93	12.16	0.21	0.09	0.00	14.02
Hart	1.57	1.06	0.00	0.00	0.26	0.00	2.89
Heard	0.43	0.43	0.20	0.07	0.08	22.84	24.05
Henry	3.46	1.46	0.00	0.25	0.11	0.00	5.28
Houston	10.15	3.68	3.05	7.96	0.13	0.00	24.97
Irwin	0.68	0.35	0.01	1.53	0.20	0.00	2.77
Jackson	2.04	1.35	0.41	0.32	0.67	0.00	4.79
Jasper	0.63	0.34	0.90	0.00	0.17	0.00	2.04
Jeff Davis	0.72	0.53	1.68	5.01	0.08	0.00	8.02
Jefferson	1.90	0.67	6.27	10.57	0.18	0.00	19.59
Jenkins	0.52	0.33	0.12	2.61	0.19	0.00	3.77
Johnson	0.34	0.43	0.00	2.06	0.10	0.00	2.93
Jones	0.67	0.71	0.33	0.09	0.11	0.00	1.91
Lamar	1.69	0.50	0.00	0.30	1.19	0.00	3.68
Lanier	0.24	0.23	0.00	4.98	0.05	0.00	5.50
Laurens	3.09	1.22	11.18	3.52	0.26	0.00	19.27
Lee	0.62	0.80	0.02	13.92	0.13	0.00	15.49
Liberty	4.52	2.85	8.74	0.31	0.02	0.00	16.44
Lincoln	0.20	0.40	0.05	0.87	0.10	0.00	1.62
Long	0.21	0.30	0.00	0.00	0.03	0.00	0.54
Lowndes	6.54	2.55	11.82	3.88	0.13	0.00	24.92
Lumpkin	0.81	0.78	1.23	0.00	0.71	0.00	3.53
McDuffie	1.61	0.87	0.02	0.49	0.08	0.00	3.07
McIntosh	0.40	0.53	0.51	0.01	0.01	0.00	1.46
Macon	1.16	0.47	11.58	3.78	0.17	0.00	17.16
Madison	0.30	1.21	0.00	0.19	0.55	0.00	2.25
Marion	0.93	0.30	0.00	2.06	0.11	0.00	3.40
Meriwether	1.34	0.91	0.35	0.08	1.77	0.00	4.45
Miller	0.30	0.36	0.01	22.87	0.20	0.00	23.74
Mitchell	2.86	0.78	0.00	11.84	0.32	0.00	15.80
Monroe	0.66	0.78	3.66	0.26	4.30	9.27	18.93
Montgomery	0.33	0.32	0.00	1.91	0.08	0.00	2.64
Morgan	1.02	0.62	0.00	1.63	0.39	0.00	3.66
Murray	1.58	1.49	0.00	0.18	0.12	0.00	3.37
Muscogee	30.98	0.22	0.60	0.79	0.03	0.00	32.62
Newton	3.31	1.56	0.47	0.03	0.14	0.00	5.51
Oconee	0.33	0.78	0.02	0.10	0.31	0.00	1.54
Oglethorpe	0.25	0.62	0.00	0.10	0.25	0.00	1.22
Paulding	0.43	0.12	0.00	0.04	0.13	0.00	0.72

WITHDRAWALS IN MILLION GALLONS PER DAY							TOTALS
COUNTY	Public Supply	Domestic & Commercial	Industry & Mining	Irrigation	Livestock	Thermo-Electric	
Peach	2.10	0.52	0.01	2.12	0.04	0.00	4.79
Pickens	0.98	0.52	0.00	0.01	0.15	0.00	1.66
Pierce	0.55	0.67	0.00	1.72	0.12	0.00	3.06
Pike	0.28	0.53	0.00	0.27	0.30	0.00	1.38
Polk	1.31	0.57	0.13	0.03	0.13	0.00	2.17
Pulaski	0.78	0.28	0.34	15.34	0.08	0.00	16.82
Putnam	0.82	0.54	0.00	0.13	0.19	1063.50	1065.18
Quitman	0.12	0.10	0.00	0.20	0.03	0.00	0.45
Rabun	0.74	0.91	1.76	0.00	0.07	0.00	3.48
Randolph	0.64	0.26	0.00	8.08	0.13	0.00	9.11
Richmond	35.86	1.78	54.98	1.70	0.04	0.00	94.36
Rockdale	2.10	0.48	0.00	1.06	0.03	0.00	3.67
Schley	0.21	0.13	0.00	1.45	0.06	0.00	1.85
Scriven	1.32	0.81	1.36	7.67	0.25	0.00	11.41
Seminole	0.65	0.38	0.00	25.62	0.16	0.00	26.81
Spalding	5.53	1.47	0.00	0.25	0.09	0.00	7.34
Stephens	3.66	0.31	0.00	0.05	0.15	0.00	4.17
Stewart	0.37	0.18	0.00	1.38	0.05	0.00	1.98
Sumter	3.31	0.95	0.01	17.10	0.26	0.00	21.63
Talbot	0.11	0.34	0.00	0.10	2.33	0.00	2.88
Taliaferro	0.05	0.13	0.00	0.00	0.03	0.00	0.21
Tattall	1.06	1.54	0.00	1.92	0.29	0.00	4.81
Taylor	0.63	0.28	0.11	0.79	0.18	0.00	1.99
Telfair	1.54	0.27	0.16	4.63	0.16	0.00	6.76
Terrell	2.37	0.36	0.00	5.26	0.07	0.00	8.06
Thomas	5.19	0.99	1.28	2.07	0.22	0.00	9.75
Tift	3.26	0.32	0.25	10.29	0.20	0.00	14.32
Toombs	2.16	0.58	0.00	2.74	0.17	0.00	5.65
Towns	0.27	0.16	0.00	0.00	0.04	0.00	0.47
Treutlen	0.25	0.24	0.00	0.18	0.05	0.00	0.72
Troup	9.19	1.82	1.08	0.15	0.12	0.00	12.36
Turner	1.01	0.37	0.00	3.51	0.15	0.00	5.04
Twiggs	0.22	0.60	20.14	0.03	0.04	0.00	21.03
Union	0.41	0.39	0.01	0.09	0.10	0.00	1.00
Upson	1.93	0.80	2.98	0.58	4.15	0.00	10.44
Walker	5.56	0.43	4.19	0.13	0.24	0.00	10.55
Walton	3.07	1.17	0.04	0.14	0.25	0.00	4.67
Ware	4.43	1.92	0.72	0.71	0.09	0.00	7.87
Warren	0.37	0.28	1.27	0.06	0.09	0.00	2.07
Washington	1.46	0.69	14.75	3.95	0.17	0.00	21.02
Wayne	1.62	0.84	66.59	1.89	0.08	0.00	71.02
Webster	0.08	0.09	0.00	1.72	0.04	0.00	1.93
Wheeler	0.23	0.18	0.00	0.81	0.09	0.00	1.31
White	0.29	0.75	1.64	0.13	0.28	0.00	3.09
Whitfield	33.85	0.26	0.03	0.20	0.19	0.00	34.53
Wilcox	0.55	0.29	0.00	17.83	0.12	0.00	18.79
Wilkes	2.82	0.41	0.00	0.05	0.26	0.00	3.54
Wilkinson	0.93	0.32	25.55	0.59	0.03	0.00	27.42
Worth	1.25	0.79	0.00	5.56	0.25	0.00	7.85
TOTALS	835.80	126.68	655.16	453.41	47.37	3327.58	5446.00



**WATER USE BY COUNTY**

**TABLE 4**



## APPLING

Population: 16,300  
 Population served by public supply: 6,560  
 Acres irrigated: 3,240  
 Hydroelectric use (Mgal/d): 0

WITHDRAWALS IN MILLION GALLONS PER DAY							
	Public Supply	Domestic & Commercial	Industry & Mining	Irrigation	Livestock	Thermoelectric	TOTALS
Ground Water	0.89	0.75	0.15	0.60	0.15	0.22	2.76
Surface Water	0.00	0.00	0.00	0.55	0.08	55.17	55.80
TOTALS	0.89	0.75	0.15	1.15	0.23	55.39	58.56

### Withdrawals by Major Public Suppliers (Mgal/d):

	GW	SW
City of Baxley	0.83	0.00
Town of Surrency	0.04	0.00

### Withdrawals by Major Industrial Groups (Mgal/d):

	SIC	GW	SW
24 Lumber		0.15	0.00

## ATKINSON

Population: 6,400  
 Population served by public supply: 3,470  
 Acres irrigated: 5,220  
 Hydroelectric use (Mgal/d): 0

WITHDRAWALS IN MILLION GALLONS PER DAY							
	Public Supply	Domestic & Commercial	Industry & Mining	Irrigation	Livestock	Thermoelectric	TOTALS
Ground Water	0.35	0.22	0.00	0.86	0.27	0.00	1.70
Surface Water	0.00	0.00	0.00	0.68	0.05	0.00	0.73
TOTALS	0.35	0.22	0.00	1.54	0.32	0.00	2.43

### Withdrawals by Major Public Suppliers (Mgal/d):

	GW	SW
City of Pearson	0.20	0.00
Town of Willacoochee	0.15	0.00

### Withdrawals by Major Industrial Groups (Mgal/d):

	SIC	GW	SW
None			

## BACON

Population: 9,400  
 Population served by public supply: 3,980  
 Acres irrigated: 4,400  
 Hydroelectric use (Mgal/d): 0

WITHDRAWALS IN MILLION GALLONS PER DAY							
	Public Supply	Domestic & Commercial	Industry & Mining	Irrigation	Livestock	Thermo-electric	TOTALS
Ground Water	0.56	0.41	0.48	0.95	0.06	0.00	2.46
Surface Water	0.00	0.00	0.00	0.69	0.05	0.00	0.74
TOTALS	0.56	0.41	0.48	1.64	0.11	0.00	3.20

### Withdrawals by Major Public Suppliers (Mgal/d):

	GW	SW
City of Alma	0.55	0.00

### Withdrawals by Major Industrial Groups (Mgal/d):

SIC	GW	SW
22 Textiles	0.48	0.00

## BAKER

Population: 3,700  
 Population served by public supply: 900  
 Acres irrigated: 37,740  
 Hydroelectric use (Mgal/d): 0

WITHDRAWALS IN MILLION GALLONS PER DAY							
	Public Supply	Domestic & Commercial	Industry & Mining	Irrigation	Livestock	Thermo-electric	TOTALS
Ground Water	0.10	0.21	0.00	18.71	0.11	0.00	19.13
Surface Water	0.00	0.00	0.00	2.80	0.01	0.00	2.81
TOTALS	0.10	0.21	0.00	21.51	0.12	0.00	21.94

### Withdrawals by Major Public Suppliers (Mgal/d):

	GW	SW
City of Newton	0.10	0.00

### Withdrawals by Major Industrial Groups (Mgal/d):

SIC	GW	SW
None		



## BALDWIN

Population: 38,000  
 Population served by public supply: 16,710  
 Acres irrigated: 0  
 Hydroelectric use (Mgal/d): 874

WITHDRAWALS IN MILLION GALLONS PER DAY							
	Public Supply	Domestic & Commercial	Industry & Mining	Irrigation	Livestock	Thermo-electric	TOTALS
Ground Water	0.04	1.61	0.01	0.00	0.01	0.00	1.67
Surface Water	4.76	1.29	0.32	0.00	0.07	0.00	6.44
TOTALS	4.80	2.90	0.33	0.00	0.08	0.00	8.11

### Withdrawals by Major Public Suppliers (Mgal/d):

	GW	SW
City of Milledgeville	0.00	4.76

### Withdrawals by Major Industrial Groups (Mgal/d):

SIC	GW	SW
14 Mining	0.01	0.00
22 Textiles	0.00	0.32

## BANKS

Population: 9,900  
 Population served by public supply: 2,270  
 Acres irrigated: 110  
 Hydroelectric use (Mgal/d): 0

WITHDRAWALS IN MILLION GALLONS PER DAY							
	Public Supply	Domestic & Commercial	Industry & Mining	Irrigation	Livestock	Thermo-electric	TOTALS
Ground Water	0.11	0.58	0.06	0.03	0.27	0.00	1.05
Surface Water	0.00	0.23	0.00	0.04	0.08	0.00	0.35
TOTALS	0.11	0.81	0.06	0.07	0.35	0.00	1.40

### Withdrawals by Major Public Suppliers (Mgal/d):

	GW	SW
Town of Homer	0.04	0.00
Town of Maysville	0.04	0.00

### Withdrawals by Major Industrial Groups (Mgal/d):

SIC	GW	SW
23 Apparel	0.06	0.00

## BARROW

Population: 24,900  
 Population served by public supply: 13,750  
 Acres irrigated: 390  
 Hydroelectric use (Mgal/d): 0

WITHDRAWALS IN MILLION GALLONS PER DAY							
	Public Supply	Domestic & Commercial	Industry & Mining	Irrigation	Livestock	Thermo-electric	TOTALS
Ground Water	0.08	0.84	0.09	0.03	0.68	0.00	1.72
Surface Water	2.33	0.00	0.01	0.07	0.11	0.00	2.52
TOTALS	2.41	0.84	0.10	0.10	0.79	0.00	4.24

### Withdrawals by Major Public Suppliers (Mgal/d):

	GW	SW
Town of Auburn	0.06	0.00
City of Statham	0.00	0.03
City of Winder	0.00	2.30

### Withdrawals by Major Industrial Groups (Mgal/d):

SIC	GW	SW
20 Food	0.09	0.00
24 Lumber	0.00	0.01

## BARTOW

Population: 45,500  
 Population served by public supply: 30,530  
 Acres irrigated: 310  
 Hydroelectric use (Mgal/d): 741

WITHDRAWALS IN MILLION GALLONS PER DAY							
	Public Supply	Domestic & Commercial	Industry & Mining	Irrigation	Livestock	Thermo-electric	TOTALS
Ground Water	1.21	1.22	3.30	0.10	0.12	0.00	5.95
Surface Water	6.85	0.00	2.15	0.15	0.13	58.52	67.80
TOTALS	8.06	1.22	5.45	0.25	0.25	58.52	73.75

### Withdrawals by Major Public Suppliers (Mgal/d):

	GW	SW
City of Adairsville	0.18	0.00
Bartow County Water System	0.00	0.15
City of Cartersville	0.00	6.40
City of Emerson	0.00	0.30
City of Kingston	0.92	0.00
Town of White	0.05	0.00

### Withdrawals by Major Industrial Groups (Mgal/d):

SIC	GW	SW
22 Textiles	0.46	0.00
28 Chemicals	1.29	2.00
32 Stone, Clay	1.40	0.00
33 Primary Metals	0.15	0.15

## BEN HILL

Population: 17,300  
 Population served by public supply: 13,680  
 Acres irrigated: 10,260  
 Hydroelectric use (Mgal/d): 0

WITHDRAWALS IN MILLION GALLONS PER DAY							
	Public Supply	Domestic & Commercial	Industry & Mining	Irrigation	Livestock	Thermo-electric	TOTALS
Ground Water	2.69	0.28	0.00	2.34	0.10	0.00	5.41
Surface Water	0.00	0.00	0.00	0.96	0.07	0.00	1.03
TOTALS	2.69	0.28	0.00	3.30	0.17	0.00	6.44

### Withdrawals by Major Public Suppliers (Mgal/d):

### Withdrawals by Major Industrial Groups (Mgal/d):

	GW	SW	SIC	GW	SW
City of Fitzgerald	2.68	0.00	None		

## BERRIEN

Population: 13,900  
 Population served by public supply: 7,080  
 Acres irrigated: 11,530  
 Hydroelectric use (Mgal/d): 0

WITHDRAWALS IN MILLION GALLONS PER DAY							
	Public Supply	Domestic & Commercial	Industry & Mining	Irrigation	Livestock	Thermo-electric	TOTALS
Ground Water	0.36	0.51	0.71	3.80	0.07	0.00	5.45
Surface Water	0.00	0.00	0.00	3.00	0.09	0.00	3.09
TOTALS	0.36	0.51	0.71	6.80	0.16	0.00	8.54

### Withdrawals by Major Public Suppliers (Mgal/d):

### Withdrawals by Major Industrial Groups (Mgal/d):

	GW	SW	SIC	GW	SW
Town of Alapaha	0.07	0.00	22 Textiles	0.71	0.00
Town of Enigma	0.03	0.00			
City of Nashville	0.20	0.00			
City of Ray City	0.05	0.00			

## BIBB

Population: 156,400  
 Population served by public supply: 133,670  
 Acres irrigated: 400  
 Hydroelectric use (Mgal/d): 0

WITHDRAWALS IN MILLION GALLONS PER DAY							
	Public Supply	Domestic & Commercial	Industry & Mining	Irrigation	Livestock	Thermo-electric	TOTALS
Ground Water	0.23	2.16	3.51	1.06	0.08	0.00	7.04
Surface Water	29.86	0.00	1.25	1.06	0.10	189.21	221.48
TOTALS	30.09	2.16	4.76	2.12	0.18	189.21	228.52

### Withdrawals by Major Public Suppliers (Mgal/d):

	GW	SW
Macon-Bibb County Water & Sewer	0.00	29.86

### Withdrawals by Major Industrial Groups (Mgal/d):

SIC	GW	SW
20 Food	0.37	0.00
22 Textiles	0.00	1.25
26 Paper	1.12	0.00
30 Rubber	0.45	0.00
32 Stone, Clay	1.57	0.00

## BLECKLEY

Population: 10,700  
 Population served by public supply: 5,480  
 Acres irrigated: 21,150  
 Hydroelectric use (Mgal/d): 0

WITHDRAWALS IN MILLION GALLONS PER DAY							
	Public Supply	Domestic & Commercial	Industry & Mining	Irrigation	Livestock	Thermo-electric	TOTALS
Ground Water	0.67	0.50	0.00	3.92	0.04	0.00	5.13
Surface Water	0.00	0.00	0.00	2.30	0.04	0.00	2.34
TOTALS	0.67	0.50	0.00	6.22	0.08	0.00	7.47

### Withdrawals by Major Public Suppliers (Mgal/d):

	GW	SW
City of Cochran	0.66	0.00

### Withdrawals by Major Industrial Groups (Mgal/d):

SIC	GW	SW
None		

## BRANTLEY

Population: 9,700  
 Population served by public supply: 2,240  
 Acres irrigated: 960  
 Hydroelectric use (Mgal/d): 0

WITHDRAWALS IN MILLION GALLONS PER DAY							
	Public Supply	Domestic & Commercial	Industry & Mining	Irrigation	Livestock	Thermo-electric	TOTALS
Ground Water	0.23	0.58	0.97	0.12	0.07	0.00	1.97
Surface Water	0.00	0.00	0.00	0.11	0.03	0.00	0.14
TOTALS	0.23	0.58	0.97	0.23	0.10	0.00	2.11

### Withdrawals by Major Public Suppliers (Mgal/d):

	GW	SW
City of Hoboken	0.06	0.00
City of Nahunta	0.13	0.00

### Withdrawals by Major Industrial Groups (Mgal/d):

SIC	GW	SW
14 Mining	0.97	0.00

## BROOKS

Population: 15,200  
 Population served by public supply: 7,050  
 Acres irrigated: 10,590  
 Hydroelectric use (Mgal/d): 0

WITHDRAWALS IN MILLION GALLONS PER DAY							
	Public Supply	Domestic & Commercial	Industry & Mining	Irrigation	Livestock	Thermo-electric	TOTALS
Ground Water	1.56	0.63	0.00	1.92	0.19	0.00	4.30
Surface Water	0.00	0.00	0.00	0.54	0.14	0.00	0.68
TOTALS	1.56	0.63	0.00	2.46	0.33	0.00	4.98

### Withdrawals by Major Public Suppliers (Mgal/d):

	GW	SW
Town of Barwick	0.02	0.00
City of Morven	0.08	0.00
City of Quitman	1.41	0.00

### Withdrawals by Major Industrial Groups (Mgal/d):

SIC	GW	SW
None		

## BRYAN

Population: 12,200  
 Population served by public supply: 6,150  
 Acres irrigated: 0  
 Hydroelectric use (Mgal/d): 0

WITHDRAWALS IN MILLION GALLONS PER DAY							
	Public Supply	Domestic & Commercial	Industry & Mining	Irrigation	Livestock	Thermo-electric	TOTALS
Ground Water	0.67	0.49	0.01	0.00	0.36	0.00	1.53
Surface Water	0.00	0.00	0.00	0.00	0.01	0.00	0.01
TOTALS	0.67	0.49	0.01	0.00	0.37	0.00	1.54

### Withdrawals by Major Public Suppliers (Mgal/d):

	GW	SW
City of Pembroke	0.19	0.00
City of Richmond Hill	0.31	0.00

### Withdrawals by Major Industrial Groups (Mgal/d):

SIC	GW	SW
24 Lumber	0.01	0.00

## BULLOCH

Population: 37,500  
 Population served by public supply: 23,950  
 Acres irrigated: 16,110  
 Hydroelectric use (Mgal/d): 0

WITHDRAWALS IN MILLION GALLONS PER DAY							
	Public Supply	Domestic & Commercial	Industry & Mining	Irrigation	Livestock	Thermo-electric	TOTALS
Ground Water	1.32	1.49	0.80	3.24	0.15	0.00	7.00
Surface Water	0.00	0.00	0.00	1.82	0.13	0.00	1.95
TOTALS	1.32	1.49	0.80	5.06	0.28	0.00	8.95

### Withdrawals by Major Public Suppliers (Mgal/d):

	GW	SW
Town of Brooklet	0.06	0.00
Nevils Water Assoc.	0.02	0.00
Town of Portal	0.08	0.00
Town of Register	0.02	0.00
City of Statesboro	0.75	0.00

### Withdrawals by Major Industrial Groups (Mgal/d):

SIC	GW	SW
20 Food	0.01	0.00
33 Primary Metals	0.65	0.00
34 Metal Products	0.14	0.00

## BURKE

Population: 20,800  
 Population served by public supply: 8,670  
 Acres irrigated: 17,610  
 Hydroelectric use (Mgal/d): 0

WITHDRAWALS IN MILLION GALLONS PER DAY							
	Public Supply	Domestic & Commercial	Industry & Mining	Irrigation	Livestock	Thermo-electric	TOTALS
Ground Water	1.20	0.94	0.00	4.59	0.06	0.86	7.65
Surface Water	0.31	0.00	0.00	3.76	0.13	0.09	4.29
TOTALS	1.51	0.94	0.00	8.35	0.19	0.95	11.94

### Withdrawals by Major Public Suppliers (Mgal/d):

	GW	SW
Town of Girard	0.02	0.00
City of Midville	0.08	0.00
Town of Sardis	0.10	0.00
City of Vidette	0.01	0.00
City of Waynesboro	0.95	0.31

### Withdrawals by Major Industrial Groups (Mgal/d):

	SIC
	None

## BUTTS

Population: 15,100  
 Population served by public supply: 7,300  
 Acres irrigated: 0  
 Hydroelectric use (Mgal/d): 668

WITHDRAWALS IN MILLION GALLONS PER DAY							
	Public Supply	Domestic & Commercial	Industry & Mining	Irrigation	Livestock	Thermo-electric	TOTALS
Ground Water	0.15	0.77	0.00	0.00	0.00	0.00	0.92
Surface Water	1.10	0.00	0.00	0.00	0.07	0.00	1.17
TOTALS	1.25	0.77	0.00	0.00	0.07	0.00	2.09

### Withdrawals by Major Public Suppliers (Mgal/d):

	GW	SW
City of Floyilla	0.10	0.00
City of Jackson	0.00	1.10
Town of Jenkinsburg	0.02	0.00

### Withdrawals by Major Industrial Groups (Mgal/d):

	SIC
	None

## CALHOUN

Population: 5,500  
 Population served by public supply: 4,470  
 Acres irrigated: 25,460  
 Hydroelectric use (Mgal/d): 0

WITHDRAWALS IN MILLION GALLONS PER DAY							
	Public Supply	Domestic & Commercial	Industry & Mining	Irrigation	Livestock	Thermo-electric	TOTALS
Ground Water	0.63	0.09	0.00	5.22	0.03	0.00	5.97
Surface Water	0.00	0.00	0.00	8.53	0.05	0.00	8.58
TOTALS	0.63	0.09	0.00	13.75	0.08	0.00	14.55

### Withdrawals by Major Public Suppliers (Mgal/d):

	GW	SW
City of Arlington	0.28	0.00
City of Edison	0.20	0.00
City of Leary	0.10	0.00
City of Morgan	0.05	0.00

### Withdrawals by Major Industrial Groups (Mgal/d):

SIC	GW	SW
None		

## CAMDEN

Population: 18,100  
 Population served by public supply: 12,140  
 Acres irrigated: 90  
 Hydroelectric use (Mgal/d): 0

WITHDRAWALS IN MILLION GALLONS PER DAY							
	Public Supply	Domestic & Commercial	Industry & Mining	Irrigation	Livestock	Thermo-electric	TOTALS
Ground Water	1.38	3.32	31.59	0.07	0.01	0.00	36.37
Surface Water	0.00	0.00	7.50	0.00	0.01	0.00	7.51
TOTALS	1.38	3.32	39.09	0.07	0.02	0.00	43.88

### Withdrawals by Major Public Suppliers (Mgal/d):

	GW	SW
City of Kingsland	0.48	0.00
City of St. Marys	0.42	0.00
City of Woodbine	0.09	0.00

### Withdrawals by Major Industrial Groups (Mgal/d):

SIC	GW	SW
26 Paper	30.08	7.50
28 Chemicals	0.79	0.00
29 Petroleum	0.72	0.00



## CANDLER

Population: 7,700  
 Population served by public supply: 3,840  
 Acres irrigated: 9,020  
 Hydroelectric use (Mgal/d): 0

WITHDRAWALS IN MILLION GALLONS PER DAY							
	Public Supply	Domestic & Commercial	Industry & Mining	Irrigation	Livestock	Thermo-electric	TOTALS
Ground Water	0.63	0.29	0.00	2.00	0.11	0.00	3.03
Surface Water	0.00	0.00	0.00	1.45	0.06	0.00	1.51
<b>TOTALS</b>	<b>0.63</b>	<b>0.29</b>	<b>0.00</b>	<b>3.45</b>	<b>0.17</b>	<b>0.00</b>	<b>4.54</b>

### Withdrawals by Major Public Suppliers (Mgal/d):

	GW	SW
City of Metter	0.60	0.00
Town of Pulaski	0.03	0.00

### Withdrawals by Major Industrial Groups (Mgal/d):

	SIC	GW	SW
	None		

## CARROLL

Population: 63,300  
 Population served by public supply: 31,310  
 Acres irrigated: 510  
 Hydroelectric use (Mgal/d): 0

WITHDRAWALS IN MILLION GALLONS PER DAY							
	Public Supply	Domestic & Commercial	Industry & Mining	Irrigation	Livestock	Thermo-electric	TOTALS
Ground Water	0.18	2.47	0.00	0.05	0.26	0.00	2.96
Surface Water	6.68	0.00	0.13	0.30	0.22	0.00	7.33
<b>TOTALS</b>	<b>6.86</b>	<b>2.47</b>	<b>0.13</b>	<b>0.35</b>	<b>0.48</b>	<b>0.00</b>	<b>10.29</b>

### Withdrawals by Major Public Suppliers (Mgal/d):

	GW	SW
City of Bowdon	0.00	0.41
City of Carrollton	0.00	5.51
City of Mt. Zion	0.01	0.00
Town of Roopville	0.01	0.00
City of Temple	0.00	0.14
City of Villa Rica	0.00	0.62
Town of Whitesburg	0.10	0.00

### Withdrawals by Major Industrial Groups (Mgal/d):

	SIC	GW	SW
	33 Primary Metals	0.00	0.13

## CATOOSA

Population: 39,500  
 Population served by public supply: 31,020  
 Acres irrigated: 430  
 Hydroelectric use (Mgal/d): 0

WITHDRAWALS IN MILLION GALLONS PER DAY							
	Public Supply	Domestic & Commercial	Industry & Mining	Irrigation	Livestock	Thermo-electric	TOTALS
Ground Water	2.61	0.64	0.00	0.09	0.02	0.00	3.36
Surface Water	0.50	0.00	0.00	0.20	0.11	0.00	0.81
TOTALS	3.11	0.64	0.00	0.29	0.13	0.00	4.17

### Withdrawals by Major Public Suppliers (Mgal/d):

	GW	SW
Catoosa County Water System	2.55	0.00
City of Fort Oglethorpe	0.03	0.00
Houston Valley Water System	0.03	0.00
City of Ringgold	0.00	0.50

### Withdrawals by Major Industrial Groups (Mgal/d):

SIC	GW	SW
None		

## CHARLTON

Population: 7,600  
 Population served by public supply: 2,980  
 Acres irrigated: 210  
 Hydroelectric use (Mgal/d): 0

WITHDRAWALS IN MILLION GALLONS PER DAY							
	Public Supply	Domestic & Commercial	Industry & Mining	Irrigation	Livestock	Thermo-electric	TOTALS
Ground Water	0.67	0.38	0.27	0.00	0.03	0.00	1.35
Surface Water	0.00	0.00	0.00	0.06	0.01	0.00	0.07
TOTALS	0.67	0.38	0.27	0.06	0.04	0.00	1.42

### Withdrawals by Major Public Suppliers (Mgal/d):

	GW	SW
City of Folkston	0.67	0.00

### Withdrawals by Major Industrial Groups (Mgal/d):

SIC	GW	SW
14 Mining	0.27	0.00

## CHATHAM

Population: 214,700  
 Population served by public supply: 208,740  
 Acres irrigated: 1,480  
 Hydroelectric use (Mgal/d): 0

WITHDRAWALS IN MILLION GALLONS PER DAY							
	Public Supply	Domestic & Commercial	Industry & Mining	Irrigation	Livestock	Thermo-electric	TOTALS
Ground Water	32.49	2.71	38.22	1.47	0.01	3.55	78.45
Surface Water	31.38	0.00	37.18	0.39	0.02	350.83	419.80
TOTALS	63.87	2.71	75.40	1.86	0.03	354.38	498.25

### Withdrawals by Major Public Suppliers (Mgal/d):

	GW	SW
City of Bloomingdale	0.09	0.00
Chatham County	0.03	0.00
City of Garden City	0.44	0.00
Hunter Army Airfield	0.84	0.00
Town of Pooler	0.29	0.00
City of Port Wentworth	0.40	0.00
City of Savannah	27.10	0.00
Savannah Ind. & Dom. Water Syst.	0.00	31.38
Skidaway Island Utilities	0.19	0.00
Town of Thunderbolt	0.23	0.00
City of Tybee Island	0.90	0.00

### Withdrawals by Major Industrial Groups (Mgal/d):

	GW	SW
14 Mining	0.02	0.00
16 Construction	0.15	0.00
20 Food	3.61	0.00
24 Lumber	0.06	0.00
26 Paper	23.63	25.02
28 Chemicals	9.51	12.16
29 Petroleum	1.08	0.00
32 Stone, Clay	0.16	0.00

## CHATTAHOOCHEE

Population: 21,000  
 Population served by public supply: 18,160  
 Acres irrigated: 0  
 Hydroelectric use (Mgal/d): 0

WITHDRAWALS IN MILLION GALLONS PER DAY							
	Public Supply	Domestic & Commercial	Industry & Mining	Irrigation	Livestock	Thermo-electric	TOTALS
Ground Water	0.21	0.21	0.00	0.00	0.00	0.00	0.42
Surface Water	6.42	0.00	0.00	0.00	0.01	0.00	6.43
TOTALS	6.63	0.21	0.00	0.00	0.01	0.00	6.85

### Withdrawals by Major Public Suppliers (Mgal/d):

	GW	SW
Chattahoochee County Water Syst.	0.04	0.00
City of Cusseta	0.17	0.00

### Withdrawals by Major Industrial Groups (Mgal/d):

	GW	SW
None		

## CHATTOOGA

Population: 21,500  
 Population served by public supply: 11,420  
 Acres irrigated: 60  
 Hydroelectric use (Mgal/d): 0

WITHDRAWALS IN MILLION GALLONS PER DAY							
	Public Supply	Domestic & Commercial	Industry & Mining	Irrigation	Livestock	Thermo-electric	TOTALS
Ground Water	1.23	0.79	6.87	0.00	0.02	0.00	8.91
Surface Water	1.81	0.00	3.42	0.03	0.11	0.00	5.37
TOTALS	3.04	0.79	10.29	0.03	0.13	0.00	14.28

### Withdrawals by Major Public Suppliers (Mgal/d):

	GW	SW
Chattooga County Water System	0.37	0.00
Town of Lyerly	0.08	0.00
Town of Menlo	0.09	0.00
City of Summerville	0.53	1.81
Town of Trion	0.13	0.00

### Withdrawals by Major Industrial Groups (Mgal/d):

SIC	GW	SW
22 Textiles	6.87	3.42

## CHEROKEE

Population: 68,600  
 Population served by public supply: 20,070  
 Acres irrigated: 240  
 Hydroelectric use (Mgal/d): 0

WITHDRAWALS IN MILLION GALLONS PER DAY							
	Public Supply	Domestic & Commercial	Industry & Mining	Irrigation	Livestock	Thermo-electric	TOTALS
Ground Water	0.24	3.65	0.00	0.00	0.37	0.00	4.26
Surface Water	2.52	0.00	0.31	0.30	0.11	0.00	3.24
TOTALS	2.76	3.65	0.31	0.30	0.48	0.00	7.50

### Withdrawals by Major Public Suppliers (Mgal/d):

	GW	SW
City of Ball Ground	0.10	0.00
City of Canton	0.00	2.52

### Withdrawals by Major Industrial Groups (Mgal/d):

SIC	GW	SW
20 Food	0.00	0.12
22 Textiles	0.00	0.19

## CLARKE

Population: 77,400  
 Population served by public supply: 65,280  
 Acres irrigated: 0  
 Hydroelectric use (Mgal/d): 0

WITHDRAWALS IN MILLION GALLONS PER DAY							
	Public Supply	Domestic & Commercial	Industry & Mining	Irrigation	Livestock	Thermo-electric	TOTALS
Ground Water	0.21	0.94	0.00	0.00	0.04	0.00	1.19
Surface Water	14.33	0.00	0.00	0.00	0.06	0.00	14.39
TOTALS	14.54	0.94	0.00	0.00	0.10	0.00	15.58

### Withdrawals by Major Public Suppliers (Mgal/d):

	GW	SW
City of Athens	0.00	14.33

### Withdrawals by Major Industrial Groups (Mgal/d):

	SIC	GW	SW
	None		

## CLAY

Population: 3,400  
 Population served by public supply: 1,880  
 Acres irrigated: 5,340  
 Hydroelectric use (Mgal/d): 3,831

WITHDRAWALS IN MILLION GALLONS PER DAY							
	Public Supply	Domestic & Commercial	Industry & Mining	Irrigation	Livestock	Thermo-electric	TOTALS
Ground Water	0.13	0.12	0.00	1.05	0.02	0.00	1.32
Surface Water	0.00	0.00	0.00	1.13	0.05	0.00	1.18
TOTALS	0.13	0.12	0.00	2.18	0.07	0.00	2.50

### Withdrawals by Major Public Suppliers (Mgal/d):

	GW	SW
Town of Bluffton	0.01	0.00
City of Fort Gaines	0.12	0.00

### Withdrawals by Major Industrial Groups (Mgal/d):

	SIC	GW	SW
	None		

## CLAYTON

Population: 167,000  
 Population served by public supply: 164,050  
 Acres irrigated: 3,630  
 Hydroelectric use (Mgal/d): 0

WITHDRAWALS IN MILLION GALLONS PER DAY							
	Public Supply	Domestic & Commercial	Industry & Mining	Irrigation	Livestock	Thermo-electric	TOTALS
Ground Water	0.22	0.22	0.00	0.01	0.00	0.00	0.45
Surface Water	16.76	0.00	0.00	0.01	0.02	0.00	16.79
<b>TOTALS</b>	<b>16.98</b>	<b>0.22</b>	<b>0.00</b>	<b>0.02</b>	<b>0.02</b>	<b>0.00</b>	<b>17.24</b>

### Withdrawals by Major Public Suppliers (Mgal/d):

	GW	SW
Clayton County Water Auth.	0.00	16.76
City of Jonesboro	0.11	0.00
City of Riverdale	0.04	0.00

### Withdrawals by Major Industrial Groups (Mgal/d):

SIC	GW	SW
None		

## CLINCH

Population: 6,800  
 Population served by public supply: 3,460  
 Acres irrigated: 510  
 Hydroelectric use (Mgal/d): 0

WITHDRAWALS IN MILLION GALLONS PER DAY							
	Public Supply	Domestic & Commercial	Industry & Mining	Irrigation	Livestock	Thermo-electric	TOTALS
Ground Water	0.34	0.25	0.03	0.13	0.01	0.00	0.76
Surface Water	0.00	0.00	0.00	0.35	0.01	0.00	0.36
<b>TOTALS</b>	<b>0.34</b>	<b>0.25</b>	<b>0.03</b>	<b>0.48</b>	<b>0.02</b>	<b>0.00</b>	<b>1.12</b>

### Withdrawals by Major Public Suppliers (Mgal/d):

	GW	SW
Town of Dupont	0.03	0.00
City of Homerville	0.31	0.00

### Withdrawals by Major Industrial Groups (Mgal/d):

SIC	GW	SW
26 Paper	0.03	0.00

## COBB

Population: 375,000  
 Population served by public supply: 367,500  
 Acres irrigated: 1,200  
 Hydroelectric use (Mgal/d): 0

WITHDRAWALS IN MILLION GALLONS PER DAY							
	Public Supply	Domestic & Commercial	Industry & Mining	Irrigation	Livestock	Thermo-electric	TOTALS
Ground Water	0.15	0.57	0.00	0.94	0.01	0.00	1.67
Surface Water	64.91	0.00	0.84	1.19	0.04	381.28	448.26
TOTALS	65.06	0.57	0.84	2.13	0.05	381.28	449.93

### Withdrawals by Major Public Suppliers (Mgal/d):

	GW	SW
Cobb County-Marietta Water Auth.	0.00	64.91
City of Powder Springs	0.13	0.00

### Withdrawals by Major Industrial Groups (Mgal/d):

	SIC	GW	SW
26 Paper		0.00	0.84

## COFFEE

Population: 28,900  
 Population served by public supply: 16,870  
 Acres irrigated: 18,050  
 Hydroelectric use (Mgal/d): 0

WITHDRAWALS IN MILLION GALLONS PER DAY							
	Public Supply	Domestic & Commercial	Industry & Mining	Irrigation	Livestock	Thermo-electric	TOTALS
Ground Water	3.51	0.93	0.00	4.21	0.31	0.00	8.96
Surface Water	0.00	0.00	0.00	2.37	0.14	0.00	2.51
TOTALS	3.51	0.93	0.00	6.58	0.45	0.00	11.47

### Withdrawals by Major Public Suppliers (Mgal/d):

	GW	SW
City of Ambrose	0.04	0.00
City of Broxton	0.10	0.00
City of Douglas	3.11	0.00
City of Nicholls	0.18	0.00

### Withdrawals by Major Industrial Groups (Mgal/d):

	SIC	GW	SW
None			

## COLQUITT

Population: 36,400  
 Population served by public supply: 30,410  
 Acres irrigated: 28,350  
 Hydroelectric use (Mgal/d): 0

WITHDRAWALS IN MILLION GALLONS PER DAY							
	Public Supply	Domestic & Commercial	Industry & Mining	Irrigation	Livestock	Thermo-electric	TOTALS
Ground Water	3.65	0.65	1.30	7.29	0.25	0.00	13.14
Surface Water	0.00	0.00	0.00	4.66	0.20	0.00	4.86
<b>TOTALS</b>	<b>3.65</b>	<b>0.65</b>	<b>1.30</b>	<b>11.95</b>	<b>0.45</b>	<b>0.00</b>	<b>18.00</b>

### Withdrawals by Major Public Suppliers (Mgal/d):

	GW	SW
Town of Berlin	0.02	0.00
City of Doerun	0.09	0.00
Town of Ellenton	0.03	0.00
Town of Funston	0.03	0.00
City of Moultrie	3.08	0.00
Town of Norman Park	0.15	0.00
Town of Riverside	0.12	0.00

### Withdrawals by Major Industrial Groups (Mgal/d):

SIC	GW	SW
20 Food	0.54	0.00
28 Chemicals	0.51	0.00
32 Stone, Clay	0.01	0.00
34 Metal Products	0.24	0.00

## COLUMBIA

Population: 53,200  
 Population served by public supply: 38,350  
 Acres irrigated: 50  
 Hydroelectric use (Mgal/d): 3,159

WITHDRAWALS IN MILLION GALLONS PER DAY							
	Public Supply	Domestic & Commercial	Industry & Mining	Irrigation	Livestock	Thermo-electric	TOTALS
Ground Water	1.35	1.21	0.00	0.00	0.00	0.00	2.56
Surface Water	4.75	0.00	0.00	0.08	0.07	0.00	4.90
<b>TOTALS</b>	<b>6.10</b>	<b>1.21</b>	<b>0.00</b>	<b>0.08</b>	<b>0.07</b>	<b>0.00</b>	<b>7.46</b>

### Withdrawals by Major Public Suppliers (Mgal/d):

	GW	SW
Columbia County Water Dept.	0.88	4.75
City of Grovetown	0.18	0.00
City of Harlem	0.27	0.00

### Withdrawals by Major Industrial Groups (Mgal/d):

SIC	GW	SW
None		



## COOK

Population: 13,900  
 Population served by public supply: 8,410  
 Acres irrigated: 8,740  
 Hydroelectric use (Mgal/d): 0

WITHDRAWALS IN MILLION GALLONS PER DAY							
	Public Supply	Domestic & Commercial	Industry & Mining	Irrigation	Livestock	Thermo-electric	TOTALS
Ground Water	3.84	0.45	0.00	1.08	0.05	0.00	5.42
Surface Water	0.00	0.00	0.00	0.93	0.06	0.00	0.99
TOTALS	3.84	0.45	0.00	2.01	0.11	0.00	6.41

### Withdrawals by Major Public Suppliers (Mgal/d):

	GW	SW
City of Adel	3.71	0.00
Town of Cecil	0.03	0.00
Town of Lenox	0.09	0.00
Town of Sparks	0.01	0.00

### Withdrawals by Major Industrial Groups (Mgal/d):

SIC	GW	SW
None		

## COWETA

Population: 44,800  
 Population served by public supply: 20,280  
 Acres irrigated: 100  
 Hydroelectric use (Mgal/d): 0

WITHDRAWALS IN MILLION GALLONS PER DAY							
	Public Supply	Domestic & Commercial	Industry & Mining	Irrigation	Livestock	Thermo-electric	TOTALS
Ground Water	0.38	2.03	0.03	0.02	0.00	0.00	2.46
Surface Water	3.08	0.00	0.53	0.04	0.12	430.00	433.77
TOTALS	3.46	2.03	0.56	0.06	0.12	430.00	436.23

### Withdrawals by Major Public Suppliers (Mgal/d):

	GW	SW
City of Grantville	0.08	0.00
Town of Moreland	0.02	0.00
City of Newnan	0.00	2.94
City of Senoia	0.00	0.14
Town of Turin	0.03	0.00

### Withdrawals by Major Industrial Groups (Mgal/d):

SIC	GW	SW
22 Textiles	0.03	0.53

## CRAWFORD

Population: 7,400  
 Population served by public supply: 1,440  
 Acres irrigated: 1,950  
 Hydroelectric use (Mgal/d): 0

WITHDRAWALS IN MILLION GALLONS PER DAY							
	Public Supply	Domestic & Commercial	Industry & Mining	Irrigation	Livestock	Thermo-electric	TOTALS
Ground Water	0.13	0.50	0.00	0.48	0.93	0.00	2.04
Surface Water	0.00	0.00	0.00	0.10	0.94	0.00	1.04
TOTALS	0.13	0.50	0.00	0.58	1.87	0.00	3.08

Withdrawals by Major Public Suppliers (Mgal/d):

	GW	SW
City of Roberta	0.13	0.00

Withdrawals by Major Industrial Groups (Mgal/d):

SIC	GW	SW
None		

## CRISP

Population: 20,400  
 Population served by public supply: 12,470  
 Acres irrigated: 10,040  
 Hydroelectric use (Mgal/d): 1,717

WITHDRAWALS IN MILLION GALLONS PER DAY							
	Public Supply	Domestic & Commercial	Industry & Mining	Irrigation	Livestock	Thermo-electric	TOTALS
Ground Water	1.93	1.06	0.04	1.80	0.05	0.00	4.88
Surface Water	0.00	0.00	0.00	1.20	0.06	2.20	3.46
TOTALS	1.93	1.06	0.04	3.00	0.11	2.20	8.34

Withdrawals by Major Public Suppliers (Mgal/d):

	GW	SW
Town of Arabi	0.04	0.00
City of Cordele	1.82	0.00

Withdrawals by Major Industrial Groups (Mgal/d):

SIC	GW	SW
35 Machinery, ex. Elec.	0.04	0.00

## DADE

Population: 11,700  
 Population served by public supply: 11,040  
 Acres irrigated: 0  
 Hydroelectric use (Mgal/d): 0

WITHDRAWALS IN MILLION GALLONS PER DAY							
	Public Supply	Domestic & Commercial	Industry & Mining	Irrigation	Livestock	Thermo-electric	TOTALS
Ground Water	0.00	0.05	0.00	0.00	0.02	0.00	0.07
Surface Water	1.23	0.00	0.00	0.00	0.04	0.00	1.27
<b>TOTALS</b>	<b>1.23</b>	<b>0.05</b>	<b>0.00</b>	<b>0.00</b>	<b>0.06</b>	<b>0.00</b>	<b>1.34</b>

### Withdrawals by Major Public Suppliers (Mgal/d):

### Withdrawals by Major Industrial Groups (Mgal/d):

	GW	SW	SIC	GW	SW
Dade County Water System	0.00	1.23	None		

## DAWSON

Population: 6,300  
 Population served by public supply: 1,040  
 Acres irrigated: 10  
 Hydroelectric use (Mgal/d): 0

WITHDRAWALS IN MILLION GALLONS PER DAY							
	Public Supply	Domestic & Commercial	Industry & Mining	Irrigation	Livestock	Thermo-electric	TOTALS
Ground Water	0.02	0.42	0.00	0.00	0.15	0.00	0.59
Surface Water	0.07	0.00	0.00	0.00	0.05	0.00	0.12
<b>TOTALS</b>	<b>0.09</b>	<b>0.42</b>	<b>0.00</b>	<b>0.00</b>	<b>0.20</b>	<b>0.00</b>	<b>0.71</b>

### Withdrawals by Major Public Suppliers (Mgal/d):

### Withdrawals by Major Industrial Groups (Mgal/d):

	GW	SW	SIC	GW	SW
Town of Dawsonville	0.00	0.07	None		

## DECATUR

Population: 26,800  
 Population served by public supply: 12,260  
 Acres irrigated: 87,830  
 Hydroelectric use (Mgal/d): 0

WITHDRAWALS IN MILLION GALLONS PER DAY							
	Public Supply	Domestic & Commercial	Industry & Mining	Irrigation	Livestock	Thermo-electric	TOTALS
Ground Water	2.14	1.33	0.80	32.73	0.21	0.00	37.21
Surface Water	0.00	0.00	1.50	1.72	0.02	0.00	3.24
<b>TOTALS</b>	<b>2.14</b>	<b>1.33</b>	<b>2.30</b>	<b>34.45</b>	<b>0.23</b>	<b>0.00</b>	<b>40.45</b>

### Withdrawals by Major Public Suppliers (Mgal/d):

	GW	SW
Town of Attapulgus	0.10	0.00
City of Bainbridge	1.93	0.00
Town of Brinson	0.03	0.00
Town of Climax	0.04	0.00

### Withdrawals by Major Industrial Groups (Mgal/d):

SIC	GW	SW
22 Textiles	0.59	0.00
28 Chemicals	0.00	1.50
32 Stone, Clay	0.21	0.00

## DEKALB

Population: 516,300  
 Population served by public supply: 504,540  
 Acres irrigated: 620  
 Hydroelectric use (Mgal/d): 0

WITHDRAWALS IN MILLION GALLONS PER DAY							
	Public Supply	Domestic & Commercial	Industry & Mining	Irrigation	Livestock	Thermo-electric	TOTALS
Ground Water	0.09	0.88	0.00	0.17	0.01	0.00	1.15
Surface Water	68.55	0.00	0.00	1.07	0.03	0.00	69.65
<b>TOTALS</b>	<b>68.64</b>	<b>0.88</b>	<b>0.00</b>	<b>1.24</b>	<b>0.04</b>	<b>0.00</b>	<b>70.80</b>

### Withdrawals by Major Public Suppliers (Mgal/d):

	GW	SW
City of Clarkston	0.09	0.00
Dekalb County Water System	0.00	68.55

### Withdrawals by Major Industrial Groups (Mgal/d):

SIC	GW	SW
None		

## DODGE

Population: 17,100  
 Population served by public supply: 7,210  
 Acres irrigated: 12,310  
 Hydroelectric use (Mgal/d): 0

WITHDRAWALS IN MILLION GALLONS PER DAY							
	Public Supply	Domestic & Commercial	Industry & Mining	Irrigation	Livestock	Thermo-electric	TOTALS
Ground Water	0.93	0.75	0.03	2.80	0.08	0.00	4.59
Surface Water	0.00	0.00	0.11	1.14	0.07	0.00	1.32
TOTALS	0.93	0.75	0.14	3.94	0.15	0.00	5.91

### Withdrawals by Major Public Suppliers (Mgal/d):

	GW	SW
Town of Chauncey	0.02	0.00
Town of Chester	0.04	0.00
City of Eastman	0.80	0.00
Town of Rhine	0.07	0.00

### Withdrawals by Major Industrial Groups (Mgal/d):

	GW	SW
20 Food	0.03	0.03
22 Textiles	0.00	0.08

## DOOLY

Population: 10,500  
 Population served by public supply: 6,420  
 Acres irrigated: 25,930  
 Hydroelectric use (Mgal/d): 0

WITHDRAWALS IN MILLION GALLONS PER DAY							
	Public Supply	Domestic & Commercial	Industry & Mining	Irrigation	Livestock	Thermo-electric	TOTALS
Ground Water	1.09	0.37	0.00	11.07	0.05	0.00	12.58
Surface Water	0.00	0.00	0.00	1.09	0.05	0.00	1.14
TOTALS	1.09	0.37	0.00	12.16	0.10	0.00	13.72

### Withdrawals by Major Public Suppliers (Mgal/d):

	GW	SW
Town of Byromville	0.06	0.00
Town of Lilly	0.03	0.00
City of Pinehurst	0.03	0.00
City of Unadilla	0.35	0.00
City of Vienna	0.62	0.00

### Withdrawals by Major Industrial Groups (Mgal/d):

	GW	SW
None		

## DOUGHERTY

Population: 104,300  
 Population served by public supply: 102,720  
 Acres irrigated: 12,910  
 Hydroelectric use (Mgal/d): 1,300

WITHDRAWALS IN MILLION GALLONS PER DAY							
	Public Supply	Domestic & Commercial	Industry & Mining	Irrigation	Livestock	Thermo-electric	TOTALS
Ground Water	17.39	1.53	13.64	5.36	0.15	0.00	38.07
Surface Water	0.00	0.00	0.00	0.22	0.03	178.23	178.48
<b>TOTALS</b>	<b>17.39</b>	<b>1.53</b>	<b>13.64</b>	<b>5.58</b>	<b>0.18</b>	<b>178.23</b>	<b>216.55</b>

### Withdrawals by Major Public Suppliers (Mgal/d):

	GW	SW
City of Albany	17.18	0.00
Putney Water System	0.02	0.00

### Withdrawals by Major Industrial Groups (Mgal/d):

SIC	GW	SW
14 Mining	0.01	0.00
20 Food	1.54	0.00
26 Paper	3.82	0.00
28 Chemicals	7.74	0.00
30 Rubber	0.52	0.00
32 Stone, Clay	0.01	0.00

## DOUGLAS

Population: 65,500  
 Population served by public supply: 60,830  
 Acres irrigated: 240  
 Hydroelectric use (Mgal/d): 0

WITHDRAWALS IN MILLION GALLONS PER DAY							
	Public Supply	Domestic & Commercial	Industry & Mining	Irrigation	Livestock	Thermo-electric	TOTALS
Ground Water	0.06	0.37	0.00	0.13	0.10	0.00	0.66
Surface Water	5.06	0.00	0.00	0.27	0.28	0.00	5.61
<b>TOTALS</b>	<b>5.12</b>	<b>0.37</b>	<b>0.00</b>	<b>0.40</b>	<b>0.38</b>	<b>0.00</b>	<b>6.27</b>

### Withdrawals by Major Public Suppliers (Mgal/d):

	GW	SW
Douglas County Water System	0.00	4.28
City of Douglasville	0.00	0.78

### Withdrawals by Major Industrial Groups (Mgal/d):

SIC	GW	SW
None		

## EARLY

Population: 13,200  
 Population served by public supply: 6,730  
 Acres irrigated: 38,800  
 Hydroelectric use (Mgal/d): 0

WITHDRAWALS IN MILLION GALLONS PER DAY							
	Public Supply	Domestic & Commercial	Industry & Mining	Irrigation	Livestock	Thermo-electric	TOTALS
Ground Water	0.86	0.52	0.13	9.57	0.07	0.00	11.15
Surface Water	0.00	0.00	107.68	2.54	0.12	0.00	110.34
TOTALS	0.86	0.52	107.81	12.11	0.19	0.00	121.49

### Withdrawals by Major Public Suppliers (Mgal/d):

	GW	SW
City of Blakely	0.81	0.00
Town of Damascus	0.03	0.00
Town of Jakin	0.02	0.00

### Withdrawals by Major Industrial Groups (Mgal/d):

SIC	GW	SW
26 Paper	0.13	107.68

## ECHOLS

Population: 2,400  
 Population served by public supply: 740  
 Acres irrigated: 1,300  
 Hydroelectric use (Mgal/d): 0

WITHDRAWALS IN MILLION GALLONS PER DAY							
	Public Supply	Domestic & Commercial	Industry & Mining	Irrigation	Livestock	Thermo-electric	TOTALS
Ground Water	0.06	0.13	0.00	0.10	0.10	0.00	0.39
Surface Water	0.00	0.00	0.00	0.35	0.15	0.00	0.50
TOTALS	0.06	0.13	0.00	0.45	0.25	0.00	0.89

### Withdrawals by Major Public Suppliers (Mgal/d):

	GW	SW
Echols County Water Auth.	0.06	0.00

### Withdrawals by Major Industrial Groups (Mgal/d):

SIC	GW	SW
None		

## EFFINGHAM

Population: 21,300  
 Population served by public supply: 7,760  
 Acres irrigated: 620  
 Hydroelectric use (Mgal/d): 0

WITHDRAWALS IN MILLION GALLONS PER DAY							
	Public Supply	Domestic & Commercial	Industry & Mining	Irrigation	Livestock	Thermo-electric	TOTALS
Ground Water	0.73	1.08	0.00	0.18	0.26	0.27	2.52
Surface Water	0.00	0.00	0.00	0.11	0.32	101.00	101.43
<b>TOTALS</b>	<b>0.73</b>	<b>1.08</b>	<b>0.00</b>	<b>0.29</b>	<b>0.58</b>	<b>101.27</b>	<b>103.95</b>

### Withdrawals by Major Public Suppliers (Mgal/d):

	GW	SW
City of Guyton	0.15	0.00
Town of Rincon	0.22	0.00
City of Springfield	0.20	0.00

### Withdrawals by Major Industrial Groups (Mgal/d):

SIC	GW	SW
None		

## ELBERT

Population: 19,000  
 Population served by public supply: 8,550  
 Acres irrigated: 710  
 Hydroelectric use (Mgal/d): 2,441

WITHDRAWALS IN MILLION GALLONS PER DAY							
	Public Supply	Domestic & Commercial	Industry & Mining	Irrigation	Livestock	Thermo-electric	TOTALS
Ground Water	0.07	0.84	0.02	0.14	0.03	0.00	1.10
Surface Water	1.49	0.00	0.00	0.10	0.11	0.00	1.70
<b>TOTALS</b>	<b>1.56</b>	<b>0.84</b>	<b>0.02</b>	<b>0.24</b>	<b>0.14</b>	<b>0.00</b>	<b>2.80</b>

### Withdrawals by Major Public Suppliers (Mgal/d):

	GW	SW
City of Bowman	0.06	0.00
City of Elberton	0.00	1.49

### Withdrawals by Major Industrial Groups (Mgal/d):

SIC	GW	SW
20 Food	0.02	0.00



## EMANUEL

Population: 21,500  
 Population served by public supply: 11,960  
 Acres irrigated: 12,910  
 Hydroelectric use (Mgal/d): 0

WITHDRAWALS IN MILLION GALLONS PER DAY							
	Public Supply	Domestic & Commercial	Industry & Mining	Irrigation	Livestock	Thermo-electric	TOTALS
Ground Water	1.55	0.75	0.20	3.66	0.08	0.00	6.24
Surface Water	0.00	0.00	0.00	2.34	0.09	0.00	2.43
<b>TOTALS</b>	<b>1.55</b>	<b>0.75</b>	<b>0.20</b>	<b>6.00</b>	<b>0.17</b>	<b>0.00</b>	<b>8.67</b>

### Withdrawals by Major Public Suppliers (Mgal/d):

	GW	SW
City of Adrian	0.08	0.00
Town of Garfield	0.03	0.00
Town of Nunez	0.01	0.00
Town of Oak Park	0.03	0.00
Town of Stillmore	0.04	0.00
Town of Summertown	0.02	0.00
City of Swainsboro	1.18	0.00
City of Twin City	0.13	0.00

### Withdrawals by Major Industrial Groups (Mgal/d):

	GW	SW
20 Food	0.20	0.00

## EVANS

Population: 8,500  
 Population served by public supply: 5,720  
 Acres irrigated: 2,700  
 Hydroelectric use (Mgal/d): 0

WITHDRAWALS IN MILLION GALLONS PER DAY							
	Public Supply	Domestic & Commercial	Industry & Mining	Irrigation	Livestock	Thermo-electric	TOTALS
Ground Water	0.45	0.22	0.72	0.16	0.05	0.00	1.60
Surface Water	0.00	0.00	0.00	0.53	0.03	0.00	0.56
<b>TOTALS</b>	<b>0.45</b>	<b>0.22</b>	<b>0.72</b>	<b>0.69</b>	<b>0.08</b>	<b>0.00</b>	<b>2.16</b>

### Withdrawals by Major Public Suppliers (Mgal/d):

	GW	SW
City of Bellville	0.03	0.00
City of Claxton	0.31	0.00
City of Daisy	0.02	0.00
City of Hagan	0.09	0.00

### Withdrawals by Major Industrial Groups (Mgal/d):

	GW	SW
20 Food	0.72	0.00

## FANNIN

Population: 15,400  
 Population served by public supply: 8,590  
 Acres irrigated: 40  
 Hydroelectric use (Mgal/d): 244

WITHDRAWALS IN MILLION GALLONS PER DAY							
	Public Supply	Domestic & Commercial	Industry & Mining	Irrigation	Livestock	Thermo-electric	TOTALS
Ground Water	0.10	0.52	0.00	0.00	0.00	0.00	0.62
Surface Water	0.72	0.00	0.00	0.00	0.05	0.00	0.77
TOTALS	0.82	0.52	0.00	0.00	0.05	0.00	1.39

### Withdrawals by Major Public Suppliers (Mgal/d):

	GW	SW
City of Blue Ridge	0.00	0.39
City of McCaysville	0.00	0.33
Town of Mineral Bluff	0.05	0.00
Town of Morganton	0.05	0.00

### Withdrawals by Major Industrial Groups (Mgal/d):

SIC	GW	SW
None		

## FAYETTE

Population: 42,900  
 Population served by public supply: 29,453  
 Acres irrigated: 150  
 Hydroelectric use (Mgal/d): 0

WITHDRAWALS IN MILLION GALLONS PER DAY							
	Public Supply	Domestic & Commercial	Industry & Mining	Irrigation	Livestock	Thermo-electric	TOTALS
Ground Water	0.27	0.76	0.01	0.02	0.00	0.00	1.06
Surface Water	0.43	0.00	0.00	0.06	0.07	0.00	0.56
TOTALS	0.70	0.76	0.01	0.08	0.07	0.00	1.62

### Withdrawals by Major Public Suppliers (Mgal/d):

	GW	SW
Town of Brooks	0.03	0.00
Fayette County Water System	0.00	0.36
City of Fayetteville	0.00	0.07

### Withdrawals by Major Industrial Groups (Mgal/d):

SIC	GW	SW
20 Food	0.01	0.00

## FLOYD

Population: 78,700  
 Population served by public supply: 70,050  
 Acres irrigated: 1,520  
 Hydroelectric use (Mgal/d): 0

WITHDRAWALS IN MILLION GALLONS PER DAY							
	Public Supply	Domestic & Commercial	Industry & Mining	Irrigation	Livestock	Thermo-electric	TOTALS
Ground Water	0.34	0.67	0.01	0.17	0.06	0.00	1.25
Surface Water	8.64	0.48	24.63	2.28	0.14	434.66	470.83
TOTALS	8.98	1.15	24.64	2.45	0.20	434.66	472.08

### Withdrawals by Major Public Suppliers (Mgal/d):

	GW	SW
City of Cave Spring	0.00	0.69
Floyd County Water System	0.34	0.00
City of Rome	0.00	7.95

### Withdrawals by Major Industrial Groups (Mgal/d):

SIC	GW	SW
20 Food	0.01	0.00
22 Textiles	0.00	3.55
26 Paper	0.00	21.08

## FORSYTH

Population: 35,600  
 Population served by public supply: 15,050  
 Acres irrigated: 50  
 Hydroelectric use (Mgal/d): 833

WITHDRAWALS IN MILLION GALLONS PER DAY							
	Public Supply	Domestic & Commercial	Industry & Mining	Irrigation	Livestock	Thermo-electric	TOTALS
Ground Water	0.25	1.61	0.00	0.06	0.60	0.00	2.52
Surface Water	2.80	0.00	0.00	0.03	0.11	0.00	2.94
TOTALS	3.05	1.61	0.00	0.09	0.71	0.00	5.46

### Withdrawals by Major Public Suppliers (Mgal/d):

	GW	SW
City of Cumming	0.00	2.80

### Withdrawals by Major Industrial Groups (Mgal/d):

SIC	GW	SW
None		

## FRANKLIN

Population: 15,600  
 Population served by public supply: 8,890  
 Acres irrigated: 190  
 Hydroelectric use (Mgal/d): 0

WITHDRAWALS IN MILLION GALLONS PER DAY							
	Public Supply	Domestic & Commercial	Industry & Mining	Irrigation	Livestock	Thermo-electric	TOTALS
Ground Water	0.45	0.56	0.00	0.02	0.42	0.00	1.45
Surface Water	0.90	0.00	0.00	0.05	0.19	0.00	1.14
TOTALS	1.35	0.56	0.00	0.07	0.61	0.00	2.59

### Withdrawals by Major Public Suppliers (Mgal/d):

	GW	SW
City of Canon	0.06	0.00
City of Carnesville	0.07	0.00
City of Franklin Springs	0.11	0.00
City of Lavonia	0.00	0.60
City of Royston	0.13	0.30

### Withdrawals by Major Industrial Groups (Mgal/d):

SIC	GW	SW
None		

## FULTON

Population: 620,100  
 Population served by public supply: 608,940  
 Acres irrigated: 570  
 Hydroelectric use (Mgal/d): 894

WITHDRAWALS IN MILLION GALLONS PER DAY							
	Public Supply	Domestic & Commercial	Industry & Mining	Irrigation	Livestock	Thermo-electric	TOTALS
Ground Water	0.00	0.86	0.13	0.70	0.01	0.00	1.70
Surface Water	134.29	1.05	0.00	0.27	0.08	0.00	135.69
TOTALS	134.29	1.91	0.13	0.97	0.09	0.00	137.39

### Withdrawals by Major Public Suppliers (Mgal/d):

	GW	SW
City of Atlanta	0.00	124.41
City of East Point	0.00	9.05
City of Palmetto	0.00	0.29
City of Roswell	0.00	0.54

### Withdrawals by Major Industrial Groups (Mgal/d):

SIC	GW	SW
20 Food	0.06	0.00
34 Metal Products	0.07	0.00

## GILMER

Population: 12,200  
 Population served by public supply: 4,400  
 Acres irrigated: 80  
 Hydroelectric use (Mgal/d): 0

WITHDRAWALS IN MILLION GALLONS PER DAY							
	Public Supply	Domestic & Commercial	Industry & Mining	Irrigation	Livestock	Thermo-electric	TOTALS
Ground Water	0.31	0.63	0.00	0.00	0.13	0.00	1.07
Surface Water	0.92	0.00	0.00	0.00	1.49	0.00	2.41
<b>TOTALS</b>	<b>1.23</b>	<b>0.63</b>	<b>0.00</b>	<b>0.00</b>	<b>1.62</b>	<b>0.00</b>	<b>3.48</b>

### Withdrawals by Major Public Suppliers (Mgal/d):

	GW	SW
City of Ellijay	0.30	0.92

### Withdrawals by Major Industrial Groups (Mgal/d):

SIC	GW	SW
None		

## GLASCOCK

Population: 2,400  
 Population served by public supply: 940  
 Acres irrigated: 200  
 Hydroelectric use (Mgal/d): 0

WITHDRAWALS IN MILLION GALLONS PER DAY							
	Public Supply	Domestic & Commercial	Industry & Mining	Irrigation	Livestock	Thermo-electric	TOTALS
Ground Water	0.10	0.11	0.03	0.00	0.01	0.00	0.25
Surface Water	0.00	0.00	0.00	0.05	0.03	0.00	0.08
<b>TOTALS</b>	<b>0.10</b>	<b>0.11</b>	<b>0.03</b>	<b>0.05</b>	<b>0.04</b>	<b>0.00</b>	<b>0.33</b>

### Withdrawals by Major Public Suppliers (Mgal/d):

	GW	SW
City of Gibson	0.08	0.00
Town of Mitchell	0.02	0.00

### Withdrawals by Major Industrial Groups (Mgal/d):

SIC	GW	SW
14 Mining	0.02	0.00
20 Food	0.01	0.00

## GLYNN

Population: 58,800  
 Population served by public supply: 51,210  
 Acres irrigated: 2,410  
 Hydroelectric use (Mgal/d): 0

WITHDRAWALS IN MILLION GALLONS PER DAY							
	Public Supply	Domestic & Commercial	Industry & Mining	Irrigation	Livestock	Thermo-electric	TOTALS
Ground Water	10.91	2.41	63.17	1.20	2.20	0.01	79.90
Surface Water	0.00	0.00	23.24	0.10	0.01	45.87	69.22
TOTALS	10.91	2.41	86.41	1.30	2.21	45.88	149.12

### Withdrawals by Major Public Suppliers (Mgal/d):

	GW	SW
City of Brunswick	6.08	0.00
Jekyll Island Water System	1.19	0.00
St Simons Island Water & Sewer	1.91	0.00
Sea Island Services	1.51	0.00

### Withdrawals by Major Industrial Groups (Mgal/d):

SIC	GW	SW
20 Food	1.09	0.00
26 Paper	44.22	23.24*
28 Chemicals	17.86	0.00

\* salt water

## GORDON

Population: 32,900  
 Population served by public supply: 21,020  
 Acres irrigated: 470  
 Hydroelectric use (Mgal/d): 0

WITHDRAWALS IN MILLION GALLONS PER DAY							
	Public Supply	Domestic & Commercial	Industry & Mining	Irrigation	Livestock	Thermo-electric	TOTALS
Ground Water	0.24	0.91	0.02	0.00	0.36	0.00	1.53
Surface Water	10.26	0.00	0.00	0.06	0.17	0.00	10.49
TOTALS	10.50	0.91	0.02	0.06	0.53	0.00	12.02

### Withdrawals by Major Public Suppliers (Mgal/d):

	GW	SW
City of Calhoun	0.24	10.10
City of Fairmont	0.00	0.16

### Withdrawals by Major Industrial Groups (Mgal/d):

SIC	GW	SW
22 Textiles	0.02	0.00

## GRADY

Population: 21,200  
 Population served by public supply: 9,400  
 Acres irrigated: 12,700  
 Hydroelectric use (Mgal/d): 0

WITHDRAWALS IN MILLION GALLONS PER DAY							
	Public Supply	Domestic & Commercial	Industry & Mining	Irrigation	Livestock	Thermo-electric	TOTALS
Ground Water	2.17	0.90	0.08	1.41	0.16	0.00	4.72
Surface Water	0.00	0.00	0.00	0.98	0.13	0.00	1.11
TOTALS	2.17	0.90	0.08	2.39	0.29	0.00	5.83

### Withdrawals by Major Public Suppliers (Mgal/d):

	GW	SW
City of Cairo	2.06	0.00
City of Whigham	0.09	0.00

### Withdrawals by Major Industrial Groups (Mgal/d):

SIC	GW	SW
20 Food	0.08	0.00

## GREENE

Population: 12,000  
 Population served by public supply: 6,450  
 Acres irrigated: 50  
 Hydroelectric use (Mgal/d): 0

WITHDRAWALS IN MILLION GALLONS PER DAY							
	Public Supply	Domestic & Commercial	Industry & Mining	Irrigation	Livestock	Thermo-electric	TOTALS
Ground Water	0.10	0.42	0.00	0.01	0.04	0.00	0.57
Surface Water	0.81	0.00	0.40	0.01	0.12	0.00	1.34
TOTALS	0.91	0.42	0.40	0.02	0.16	0.00	1.91

### Withdrawals by Major Public Suppliers (Mgal/d):

	GW	SW
City of Greensboro	0.00	0.57
Town of Siloam	0.04	0.00
City of Union Point	0.00	0.24
Town of White Plains	0.03	0.00
City of Woodville	0.03	0.00

### Withdrawals by Major Industrial Groups (Mgal/d):

SIC	GW	SW
32 Stone, Clay	0.00	0.40

## GWINNETT

Population: 253,000  
 Population served by public supply: 250,680  
 Acres irrigated: 680  
 Hydroelectric use (Mgal/d): 0

WITHDRAWALS IN MILLION GALLONS PER DAY							
	Public Supply	Domestic & Commercial	Industry & Mining	Irrigation	Livestock	Thermo-electric	TOTALS
Ground Water	0.20	0.19	0.01	1.16	0.08	0.00	1.64
Surface Water	37.40	0.00	0.16	0.80	0.08	0.00	38.44
TOTALS	37.60	0.19	0.17	1.96	0.16	0.00	40.08

### Withdrawals by Major Public Suppliers (Mgal/d):

	GW	SW
City of Buford	0.00	0.57
City of Dacula	0.06	0.00
City of Grayson	0.03	0.00
Gwinnett County Water System	0.00	36.83
City of Suwannee	0.06	0.00

### Withdrawals by Major Industrial Groups (Mgal/d):

SIC	GW	SW
31 Leather	0.00	0.16

## HABERSHAM

Population: 26,900  
 Population served by public supply: 15,430  
 Acres irrigated: 0  
 Hydroelectric use (Mgal/d): 554

WITHDRAWALS IN MILLION GALLONS PER DAY							
	Public Supply	Domestic & Commercial	Industry & Mining	Irrigation	Livestock	Thermo-electric	TOTALS
Ground Water	1.33	0.88	0.00	0.00	0.51	0.00	2.72
Surface Water	2.86	0.06	0.06	0.00	0.11	0.00	3.09
TOTALS	4.19	0.94	0.06	0.00	0.62	0.00	5.81

### Withdrawals by Major Public Suppliers (Mgal/d):

	GW	SW
Town of Alto	0.25	0.00
Town of Baldwin	0.28	0.00
City of Clarksville	0.00	0.52
City of Cornelia	0.00	2.34
City of Demorest	0.74	0.00
Town of Mt Airy	0.04	0.00

### Withdrawals by Major Industrial Groups (Mgal/d):

SIC	GW	SW
22 Textiles	0.00	0.06



## HALL

Population: 84,000  
 Population served by public supply: 60,100  
 Acres irrigated: 1,290  
 Hydroelectric use (Mgal/d): 0

WITHDRAWALS IN MILLION GALLONS PER DAY							
	Public Supply	Domestic & Commercial	Industry & Mining	Irrigation	Livestock	Thermo-electric	TOTALS
Ground Water	0.44	1.84	1.20	0.26	0.83	0.00	4.57
Surface Water	11.09	0.00	0.32	0.79	0.20	0.00	12.40
TOTALS	11.53	1.84	1.52	1.05	1.03	0.00	16.97

### Withdrawals by Major Public Suppliers (Mgal/d):

	GW	SW
Town of Flowery Branch	0.10	0.00
City of Gainesville	0.00	11.09
City of Lula	0.08	0.00

### Withdrawals by Major Industrial Groups (Mgal/d):

	GW	SW
20 Food	0.98	0.00
22 Textiles	0.21	0.32

## HANCOCK

Population: 9,400  
 Population served by public supply: 3,380  
 Acres irrigated: 600  
 Hydroelectric use (Mgal/d): 0

WITHDRAWALS IN MILLION GALLONS PER DAY							
	Public Supply	Domestic & Commercial	Industry & Mining	Irrigation	Livestock	Thermo-electric	TOTALS
Ground Water	0.11	0.46	0.01	0.18	0.00	0.00	0.76
Surface Water	0.38	0.00	0.00	0.00	0.05	0.00	0.43
TOTALS	0.49	0.46	0.01	0.18	0.05	0.00	1.19

### Withdrawals by Major Public Suppliers (Mgal/d):

	GW	SW
Devereux Water System	0.10	0.00
City of Sparta	0.00	0.38

### Withdrawals by Major Industrial Groups (Mgal/d):

	GW	SW
14 Mining	0.01	0.00

## HARALSON

Population: 20,000  
 Population served by public supply: 18,970  
 Acres irrigated: 20  
 Hydroelectric use (Mgal/d): 0

WITHDRAWALS IN MILLION GALLONS PER DAY							
	Public Supply	Domestic & Commercial	Industry & Mining	Irrigation	Livestock	Thermo-electric	TOTALS
Ground Water	0.01	0.09	0.00	0.00	0.16	0.00	0.26
Surface Water	1.32	0.00	0.00	0.05	0.07	0.00	1.44
<b>TOTALS</b>	<b>1.33</b>	<b>0.09</b>	<b>0.00</b>	<b>0.05</b>	<b>0.23</b>	<b>0.00</b>	<b>1.70</b>

### Withdrawals by Major Public Suppliers (Mgal/d):

	GW	SW
City of Bremen	0.00	0.14
Haralson County Water Auth.	0.01	1.18

### Withdrawals by Major Industrial Groups (Mgal/d):

SIC	GW	SW
None		

## HARRIS

Population: 17,000  
 Population served by public supply: 7,170  
 Acres irrigated: 270  
 Hydroelectric use (Mgal/d): 4,785

WITHDRAWALS IN MILLION GALLONS PER DAY							
	Public Supply	Domestic & Commercial	Industry & Mining	Irrigation	Livestock	Thermo-electric	TOTALS
Ground Water	0.19	0.93	0.00	0.09	0.01	0.00	1.22
Surface Water	0.44	0.00	12.16	0.12	0.08	0.00	12.80
<b>TOTALS</b>	<b>0.63</b>	<b>0.93</b>	<b>12.16</b>	<b>0.21</b>	<b>0.09</b>	<b>0.00</b>	<b>14.02</b>

### Withdrawals by Major Public Suppliers (Mgal/d):

	GW	SW
City of Hamilton	0.00	0.05
Harris County Water Works	0.08	0.35
Town of Pine Mountain	0.00	0.04
City of Shiloh	0.04	0.00
Town of Waverly Hall	0.06	0.00

### Withdrawals by Major Industrial Groups (Mgal/d):

SIC	GW	SW
22 Textiles	0.00	12.16

## HART

Population: 19,400  
 Population served by public supply: 5,700  
 Acres irrigated: 0  
 Hydroelectric use (Mgal/d): 2,038

WITHDRAWALS IN MILLION GALLONS PER DAY							
	Public Supply	Domestic & Commercial	Industry & Mining	Irrigation	Livestock	Thermo-electric	TOTALS
Ground Water	0.11	1.06	0.00	0.00	0.13	0.00	1.30
Surface Water	1.46	0.00	0.00	0.00	0.13	0.00	1.59
TOTALS	1.57	1.06	0.00	0.00	0.26	0.00	2.89

### Withdrawals by Major Public Suppliers (Mgal/d):

	GW	SW
Town of Bowersville	0.10	0.00
City of Hartwell	0.00	1.46

### Withdrawals by Major Industrial Groups (Mgal/d):

SIC	GW	SW
None		

## HEARD

Population: 6,900  
 Population served by public supply: 1,540  
 Acres irrigated: 240  
 Hydroelectric use (Mgal/d): 0

WITHDRAWALS IN MILLION GALLONS PER DAY							
	Public Supply	Domestic & Commercial	Industry & Mining	Irrigation	Livestock	Thermo-electric	TOTALS
Ground Water	0.15	0.43	0.00	0.00	0.02	0.00	0.60
Surface Water	0.28	0.00	0.20	0.07	0.06	22.84	23.45
TOTALS	0.43	0.43	0.20	0.07	0.08	22.84	24.05

### Withdrawals by Major Public Suppliers (Mgal/d):

	GW	SW
City of Franklin	0.15	0.00
Franklin/Heard County Water Auth.	0.00	0.28

### Withdrawals by Major Industrial Groups (Mgal/d):

SIC	GW	SW
33 Primary Metals	0.00	0.20

## HENRY

Population: 44,700  
 Population served by public supply: 25,220  
 Acres irrigated: 280  
 Hydroelectric use (Mgal/d): 0

WITHDRAWALS IN MILLION GALLONS PER DAY							
	Public Supply	Domestic & Commercial	Industry & Mining	Irrigation	Livestock	Thermo-electric	TOTALS
Ground Water	0.21	1.46	0.00	0.00	0.01	0.00	1.68
Surface Water	3.25	0.00	0.00	0.25	0.10	0.00	3.60
TOTALS	3.46	1.46	0.00	0.25	0.11	0.00	5.28

### Withdrawals by Major Public Suppliers (Mgal/d):

	GW	SW
City of Hampton	0.08	0.00
Henry County Water Auth.	0.00	2.59
City of Locust Grove	0.00	0.05
City of McDonough	0.03	0.61

### Withdrawals by Major Industrial Groups (Mgal/d):

SIC	GW	SW
None		

## HOUSTON

Population: 85,800  
 Population served by public supply: 80,810  
 Acres irrigated: 11,110  
 Hydroelectric use (Mgal/d): 0

WITHDRAWALS IN MILLION GALLONS PER DAY							
	Public Supply	Domestic & Commercial	Industry & Mining	Irrigation	Livestock	Thermo-electric	TOTALS
Ground Water	10.15	3.68	3.05	5.73	0.05	0.00	22.66
Surface Water	0.00	0.00	0.00	2.23	0.08	0.00	2.31
TOTALS	10.15	3.68	3.05	7.96	0.13	0.00	24.97

### Withdrawals by Major Public Suppliers (Mgal/d):

	GW	SW
City of Centerville	0.48	0.00
City of Elberta	0.11	0.00
Houston County	1.42	0.00
City of Perry	1.27	0.00
City of Warner Robins	6.29	0.00

### Withdrawals by Major Industrial Groups (Mgal/d):

SIC	GW	SW
20 Food	3.04	0.00
32 Stone, Clay	0.01	0.00

## IRWIN

Population: 8,800  
 Population served by public supply: 4,190  
 Acres irrigated: 7,040  
 Hydroelectric use (Mgal/d): 0

WITHDRAWALS IN MILLION GALLONS PER DAY							
	Public Supply	Domestic & Commercial	Industry & Mining	Irrigation	Livestock	Thermo-electric	TOTALS
Ground Water	0.68	0.35	0.01	1.01	0.09	0.00	2.14
Surface Water	0.00	0.00	0.00	0.52	0.11	0.00	0.63
TOTALS	0.68	0.35	0.01	1.53	0.20	0.00	2.77

### Withdrawals by Major Public Suppliers (Mgal/d):

	GW	SW
Irwinville Water Works Inc.	0.02	0.00
City of Mystic	0.03	0.00
City of Ocilla	0.62	0.00

### Withdrawals by Major Industrial Groups (Mgal/d):

SIC	GW	SW
20 Food	0.01	0.00

## JACKSON

Population: 27,600  
 Population served by public supply: 11,280  
 Acres irrigated: 360  
 Hydroelectric use (Mgal/d): 0

WITHDRAWALS IN MILLION GALLONS PER DAY							
	Public Supply	Domestic Commercial	& Industry & Mining	Irrigation	Livestock	Thermo-electric	TOTALS
Ground Water	0.22	1.35	0.41	0.12	0.45	0.00	2.55
Surface Water	1.82	0.00	0.00	0.20	0.22	0.00	2.24
TOTALS	2.04	1.35	0.41	0.32	0.67	0.00	4.79

### Withdrawals by Major Public Suppliers (Mgal/d):

	GW	SW
Town of Braselton	0.05	0.00
City of Commerce	0.00	1.03
City of Hoschton	0.06	0.00
City of Jefferson	0.00	0.79
Nicholson Water Assoc.	0.04	0.00

### Withdrawals by Major Industrial Groups (Mgal/d):

SIC	GW	SW
20 Food	0.41	0.00

## JASPER

Population: 7,700  
 Population served by public supply: 3,150  
 Acres irrigated: 0  
 Hydroelectric use (Mgal/d): 0

WITHDRAWALS IN MILLION GALLONS PER DAY							
	Public Supply	Domestic & Commercial	Industry & Mining	Irrigation	Livestock	Thermo-electric	TOTALS
Ground Water	0.15	0.34	0.00	0.00	0.06	0.00	0.55
Surface Water	0.48	0.00	0.90	0.00	0.11	0.00	1.49
TOTALS	0.63	0.34	0.90	0.00	0.17	0.00	2.04

### Withdrawals by Major Public Suppliers (Mgal/d):

	GW	SW
City of Monticello	0.00	0.48
Town of Shady Dale	0.10	0.00

### Withdrawals by Major Industrial Groups (Mgal/d):

SIC	GW	SW
32 Stone, Clay	0.00	0.90

## JEFF DAVIS

Population: 11,700  
 Population served by public supply: 4,680  
 Acres irrigated: 19,400  
 Hydroelectric use (Mgal/d): 0

WITHDRAWALS IN MILLION GALLONS PER DAY							
	Public Supply	Domestic & Commercial	Industry & Mining	Irrigation	Livestock	Thermo-electric	TOTALS
Ground Water	0.72	0.53	1.68	4.01	0.05	0.00	6.99
Surface Water	0.00	0.00	0.00	1.00	0.03	0.00	1.03
TOTALS	0.72	0.53	1.68	5.01	0.08	0.00	8.02

### Withdrawals by Major Public Suppliers (Mgal/d):

	GW	SW
City of Denton	0.02	0.00
City of Hazelhurst	0.69	0.00

### Withdrawals by Major Industrial Groups (Mgal/d):

SIC	GW	SW
22 Textiles	1.67	0.00
24 Lumber	0.01	0.00

## JEFFERSON

Population: 18,500  
 Population served by public supply: 9,560  
 Acres irrigated: 17,890  
 Hydroelectric use (Mgal/d): 0

WITHDRAWALS IN MILLION GALLONS PER DAY							
	Public Supply	Domestic & Commercial	Industry & Mining	Irrigation	Livestock	Thermo-electric	TOTALS
Ground Water	1.90	0.67	4.16	5.07	0.06	0.00	11.86
Surface Water	0.00	0.00	2.11	5.50	0.12	0.00	7.73
TOTALS	1.90	0.67	6.27	10.57	0.18	0.00	19.59

### Withdrawals by Major Public Suppliers (Mgal/d):

	GW	SW
Town of Avera	0.03	0.00
Town of Bartow	0.03	0.00
City of Louisville	1.39	0.00
Town of Stapleton	0.04	0.00
City of Wadley	0.16	0.00
City of Wrens	0.24	0.00

### Withdrawals by Major Industrial Groups (Mgal/d):

	GW	SW
22 Textiles	1.33	0.00
32 Stone, Clay	2.83	2.11

## JENKINS

Population: 8,400  
 Population served by public supply: 4,060  
 Acres irrigated: 10,480  
 Hydroelectric use (Mgal/d): 0

WITHDRAWALS IN MILLION GALLONS PER DAY							
	Public Supply	Domestic & Commercial	Industry & Mining	Irrigation	Livestock	Thermo-electric	TOTALS
Ground Water	0.52	0.33	0.12	2.09	0.09	0.00	3.15
Surface Water	0.00	0.00	0.00	0.52	0.10	0.00	0.62
TOTALS	0.52	0.33	0.12	2.61	0.19	0.00	3.77

### Withdrawals by Major Public Suppliers (Mgal/d):

	GW	SW
City of Millen	0.51	0.00
Perkins Water Auth.	0.01	0.00

### Withdrawals by Major Industrial Groups (Mgal/d):

	GW	SW
23 Apparel	0.12	0.00

## JOHNSON

Population: 8,800  
 Population served by public supply: 3,100  
 Acres irrigated: 2,780  
 Hydroelectric use (Mgal/d): 0

WITHDRAWALS IN MILLION GALLONS PER DAY							
	Public Supply	Domestic & Commercial	Industry & Mining	Irrigation	Livestock	Thermo-electric	TOTALS
Ground Water	0.34	0.43	0.00	1.34	0.04	0.00	2.15
Surface Water	0.00	0.00	0.00	0.72	0.06	0.00	0.78
TOTALS	0.34	0.43	0.00	2.06	0.10	0.00	2.93

### Withdrawals by Major Public Suppliers (Mgal/d):

	GW	SW
Town of Kite	0.03	0.00
Scott Water & Sewer Auth.	0.02	0.00
City of Wrightsville	0.29	0.00

### Withdrawals by Major Industrial Groups (Mgal/d):

SIC	GW	SW
None		

## JONES

Population: 18,300  
 Population served by public supply: 9,160  
 Acres irrigated: 210  
 Hydroelectric use (Mgal/d): 0

WITHDRAWALS IN MILLION GALLONS PER DAY							
	Public Supply	Domestic & Commercial	Industry & Mining	Irrigation	Livestock	Thermo-electric	TOTALS
Ground Water	0.67	0.71	0.00	0.06	0.02	0.00	1.46
Surface Water	0.00	0.00	0.33	0.03	0.09	0.00	0.45
TOTALS	0.67	0.71	0.33	0.09	0.11	0.00	1.91

### Withdrawals by Major Public Suppliers (Mgal/d):

	GW	SW
City of Gray	0.05	0.00
Haddock Water Commission	0.06	0.00
Jones County Water System	0.50	0.00

### Withdrawals by Major Industrial Groups (Mgal/d):

SIC	GW	SW
20 Food	0.00	0.30
22 Textiles	0.00	0.03



## LAMAR

Population: 12,300  
 Population served by public supply: 5,790  
 Acres irrigated: 610  
 Hydroelectric use (Mgal/d): 0

WITHDRAWALS IN MILLION GALLONS PER DAY							
	Public Supply	Domestic & Commercial	Industry & Mining	Irrigation	Livestock	Thermo-electric	TOTALS
Ground Water	0.01	0.50	0.00	0.06	0.55	0.00	1.12
Surface Water	1.68	0.00	0.00	0.24	0.64	0.00	2.56
<b>TOTALS</b>	<b>1.69</b>	<b>0.50</b>	<b>0.00</b>	<b>0.30</b>	<b>1.19</b>	<b>0.00</b>	<b>3.68</b>

Withdrawals by Major Public Suppliers (Mgal/d):

Withdrawals by Major Industrial Groups (Mgal/d):

	GW	SW	SIC	GW	SW
City of Barnesville	0.00	1.68	None		

## LANIER

Population: 5,800  
 Population served by public supply: 2,670  
 Acres irrigated: 6,920  
 Hydroelectric use (Mgal/d): 0

WITHDRAWALS IN MILLION GALLONS PER DAY							
	Public Supply	Domestic & Commercial	Industry & Mining	Irrigation	Livestock	Thermo-electric	TOTALS
Ground Water	0.24	0.23	0.00	3.04	0.03	0.00	3.54
Surface Water	0.00	0.00	0.00	1.94	0.02	0.00	1.96
<b>TOTALS</b>	<b>0.24</b>	<b>0.23</b>	<b>0.00</b>	<b>4.98</b>	<b>0.05</b>	<b>0.00</b>	<b>5.50</b>

Withdrawals by Major Public Suppliers (Mgal/d):

Withdrawals by Major Industrial Groups (Mgal/d):

	GW	SW	SIC	GW	SW
City of Lakeland	0.24	0.00	None		

## LAURENS

Population: 38,400  
 Population served by public supply: 23,750  
 Acres irrigated: 12,270  
 Hydroelectric use (Mgal/d): 0

WITHDRAWALS IN MILLION GALLONS PER DAY							
	Public Supply	Domestic & Commercial	Industry & Mining	Irrigation	Livestock	Thermo-electric	TOTALS
Ground Water	0.78	1.22	0.96	1.90	0.12	0.00	4.98
Surface Water	2.31	0.00	10.22	1.62	0.14	0.00	14.29
TOTALS	3.09	1.22	11.18	3.52	0.26	0.00	19.27

### Withdrawals by Major Public Suppliers (Mgal/d):

	GW	SW
Town of Cadwell	0.06	0.00
Town of Dexter	0.03	0.00
City of Dublin	0.51	2.31
City of Dudley	0.06	0.00
Town of Montrose	0.02	0.00
Town of Rentz	0.04	0.00

### Withdrawals by Major Industrial Groups (Mgal/d):

SIC	GW	SW
20 Food	0.01	0.00
22 Textiles	0.95	3.89
26 Paper	0.00	6.33

## LEE

Population: 14,000  
 Population served by public supply: 5,120  
 Acres irrigated: 35,740  
 Hydroelectric use (Mgal/d): 0

WITHDRAWALS IN MILLION GALLONS PER DAY							
	Public Supply	Domestic & Commercial	Industry & Mining	Irrigation	Livestock	Thermo-electric	TOTALS
Ground Water	0.62	0.80	0.02	9.88	0.11	0.00	11.43
Surface Water	0.00	0.00	0.00	4.04	0.02	0.00	4.06
TOTALS	0.62	0.80	0.02	13.92	0.13	0.00	15.49

### Withdrawals by Major Public Suppliers (Mgal/d):

	GW	SW
City of Leesburg	0.32	0.00
City of Smithville	0.08	0.00

### Withdrawals by Major Industrial Groups (Mgal/d):

SIC	GW	SW
35 Machinery, ex. Elec.	0.02	0.00

## LIBERTY

Population: 41,900  
 Population served by public supply: 31,890  
 Acres irrigated: 280  
 Hydroelectric use (Mgal/d): 0

WITHDRAWALS IN MILLION GALLONS PER DAY							
	Public Supply	Domestic & Commercial	Industry & Mining	Irrigation	Livestock	Thermo-electric	TOTALS
Ground Water	4.52	2.85	8.74	0.31	0.01	0.00	16.43
Surface Water	0.00	0.00	0.00	0.00	0.01	0.00	0.01
TOTALS	4.52	2.85	8.74	0.31	0.02	0.00	16.44

### Withdrawals by Major Public Suppliers (Mgal/d):

	GW	SW
City of Hinesville	3.11	0.00
City of Midway	0.02	0.00

### Withdrawals by Major Industrial Groups (Mgal/d):

SIC	GW	SW
26 Paper	8.74	0.00

## LINCOLN

Population: 7,000  
 Population served by public supply: 1,760  
 Acres irrigated: 1,970  
 Hydroelectric use (Mgal/d): 0

WITHDRAWALS IN MILLION GALLONS PER DAY							
	Public Supply	Domestic & Commercial	Industry & Mining	Irrigation	Livestock	Thermo-electric	TOTALS
Ground Water	0.03	0.40	0.05	0.87	0.03	0.00	1.38
Surface Water	0.17	0.00	0.00	0.00	0.07	0.00	0.24
TOTALS	0.20	0.40	0.05	0.87	0.10	0.00	1.62

### Withdrawals by Major Public Suppliers (Mgal/d):

	GW	SW
City of Lincolnnton	0.00	0.17

### Withdrawals by Major Industrial Groups (Mgal/d):

SIC	GW	SW
14 Mining	0.05	0.00

## LONG

Population: 5,700  
 Population served by public supply: 2,160  
 Acres irrigated: 0  
 Hydroelectric use (Mgal/d): 0

WITHDRAWALS IN MILLION GALLONS PER DAY							
	Public Supply	Domestic & Commercial	Industry & Mining	Irrigation	Livestock	Thermo-electric	TOTALS
Ground Water	0.21	0.30	0.00	0.00	0.02	0.00	0.53
Surface Water	0.00	0.00	0.00	0.00	0.01	0.00	0.01
<b>TOTALS</b>	<b>0.21</b>	<b>0.30</b>	<b>0.00</b>	<b>0.00</b>	<b>0.03</b>	<b>0.00</b>	<b>0.54</b>

### Withdrawals by Major Public Suppliers (Mgal/d):

	GW	SW
City of Ludowici	0.14	0.00

### Withdrawals by Major Industrial Groups (Mgal/d):

SIC	GW	SW
None		

## LOWNDES

Population: 72,900  
 Population served by public supply: 52,980  
 Acres irrigated: 4,650  
 Hydroelectric use (Mgal/d): 0

WITHDRAWALS IN MILLION GALLONS PER DAY							
	Public Supply	Domestic & Commercial	Industry & Mining	Irrigation	Livestock	Thermo-electric	TOTALS
Ground Water	6.54	2.55	11.82	2.21	0.04	0.00	23.16
Surface Water	0.00	0.00	0.00	1.67	0.09	0.00	1.76
<b>TOTALS</b>	<b>6.54</b>	<b>2.55</b>	<b>11.82</b>	<b>3.88</b>	<b>0.13</b>	<b>0.00</b>	<b>24.92</b>

### Withdrawals by Major Public Suppliers (Mgal/d):

	GW	SW
Town of Clyattville	0.03	0.00
City of Hahira	0.03	0.00
Town of Lake Park	0.04	0.00
Lowndes County Water System	0.10	0.00
City of Remerton	0.04	0.00
City of Valdosta	5.85	0.00

### Withdrawals by Major Industrial Groups (Mgal/d):

SIC	GW	SW
20 Food	0.02	0.00
23 Apparel	0.08	0.00
24 Lumber	0.08	0.00
26 Paper	10.84	0.00
28 Chemicals	0.72	0.00
36 Electrical Machinery	0.08	0.00

## LUMPKIN

Population: 12,000  
 Population served by public supply: 2,930  
 Acres irrigated: 0  
 Hydroelectric use (Mgal/d): 0

WITHDRAWALS IN MILLION GALLONS PER DAY							
	Public Supply	Domestic & Commercial	Industry & Mining	Irrigation	Livestock	Thermo-electric	TOTALS
Ground Water	0.01	0.70	0.00	0.00	0.65	0.00	1.36
Surface Water	0.80	0.08	1.23	0.00	0.06	0.00	2.17
<b>TOTALS</b>	<b>0.81</b>	<b>0.78</b>	<b>1.23</b>	<b>0.00</b>	<b>0.71</b>	<b>0.00</b>	<b>3.53</b>

### Withdrawals by Major Public Suppliers (Mgal/d):

	GW	SW
City of Dahlonega	0.00	0.80

### Withdrawals by Major Industrial Groups (Mgal/d):

SIC	GW	SW
14 Mining	0.00	1.23

## MCDUFFIE

Population: 19,600  
 Population served by public supply: 8,100  
 Acres irrigated: 1,440  
 Hydroelectric use (Mgal/d): 0

WITHDRAWALS IN MILLION GALLONS PER DAY							
	Public Supply	Domestic & Commercial	Industry & Mining	Irrigation	Livestock	Thermo-electric	TOTALS
Ground Water	0.10	0.87	0.02	0.32	0.01	0.00	1.32
Surface Water	1.51	0.00	0.00	0.17	0.07	0.00	1.75
<b>TOTALS</b>	<b>1.61</b>	<b>0.87</b>	<b>0.02</b>	<b>0.49</b>	<b>0.08</b>	<b>0.00</b>	<b>3.07</b>

### Withdrawals by Major Public Suppliers (Mgal/d):

	GW	SW
Town of Dearing	0.08	0.00
City of Thomson	0.00	1.51

### Withdrawals by Major Industrial Groups (Mgal/d):

SIC	GW	SW
14 Mining	0.01	0.00
22 Textiles	0.01	0.00

## MCINTOSH

Population: 8,100  
 Population served by public supply: 4,120  
 Acres irrigated: 10  
 Hydroelectric use (Mgal/d): 0

WITHDRAWALS IN MILLION GALLONS PER DAY							
	Public Supply	Domestic & Commercial	Industry & Mining	Irrigation	Livestock	Thermo-electric	TOTALS
Ground Water	0.40	0.53	0.51	0.01	0.00	0.00	1.45
Surface Water	0.00	0.00	0.00	0.00	0.01	0.00	0.01
<b>TOTALS</b>	<b>0.40</b>	<b>0.53</b>	<b>0.51</b>	<b>0.01</b>	<b>0.01</b>	<b>0.00</b>	<b>1.46</b>

### Withdrawals by Major Public Suppliers (Mgal/d):

	GW	SW
City of Darien	0.21	0.00
Hog Hammock Community	0.02	0.00

### Withdrawals by Major Industrial Groups (Mgal/d):

SIC	GW	SW
20 Food	0.50	0.00
30 Rubber	0.01	0.00

## MACON

Population: 14,000  
 Population served by public supply: 8,290  
 Acres irrigated: 13,290  
 Hydroelectric use (Mgal/d): 0

WITHDRAWALS IN MILLION GALLONS PER DAY							
	Public Supply	Domestic & Commercial	Industry & Mining	Irrigation	Livestock	Thermo-electric	TOTALS
Ground Water	1.16	0.47	2.12	2.08	0.09	0.00	5.92
Surface Water	0.00	0.00	9.46	1.70	0.08	0.00	11.24
<b>TOTALS</b>	<b>1.16</b>	<b>0.47</b>	<b>11.58</b>	<b>3.78</b>	<b>0.17</b>	<b>0.00</b>	<b>17.16</b>

### Withdrawals by Major Public Suppliers (Mgal/d):

	GW	SW
Town of Ideal	0.04	0.00
Town of Marshallville	0.09	0.00
City of Montezuma	0.85	0.00
City of Oglethorpe	0.18	0.00

### Withdrawals by Major Industrial Groups (Mgal/d):

SIC	GW	SW
20 Food	0.82	0.00
26 Paper	1.29	9.46
28 Chemicals	0.01	0.00

## MADISON

Population: 19,200  
 Population served by public supply: 3,370  
 Acres irrigated: 550  
 Hydroelectric use (Mgal/d): 0

WITHDRAWALS IN MILLION GALLONS PER DAY							
	Public Supply	Domestic & Commercial	Industry & Mining	Irrigation	Livestock	Thermo-electric	TOTALS
Ground Water	0.30	1.21	0.00	0.08	0.42	0.00	2.01
Surface Water	0.00	0.00	0.00	0.11	0.13	0.00	0.24
TOTALS	0.30	1.21	0.00	0.19	0.55	0.00	2.25

### Withdrawals by Major Public Suppliers (Mgal/d):

	GW	SW
Town of Carlton	0.03	0.00
City of Colbert	0.04	0.00
Town of Comer	0.08	0.00
City of Danielsville	0.06	0.00
City of Ila	0.02	0.00

### Withdrawals by Major Industrial Groups (Mgal/d):

	SIC	GW	SW
	None		

## MARION

Population: 5,400  
 Population served by public supply: 1,540  
 Acres irrigated: 3,190  
 Hydroelectric use (Mgal/d): 0

WITHDRAWALS IN MILLION GALLONS PER DAY							
	Public Supply	Domestic & Commercial	Industry & Mining	Irrigation	Livestock	Thermo-electric	TOTALS
Ground Water	0.93	0.30	0.00	0.00	0.08	0.00	1.31
Surface Water	0.00	0.00	0.00	2.06	0.03	0.00	2.09
TOTALS	0.93	0.30	0.00	2.06	0.11	0.00	3.40

### Withdrawals by Major Public Suppliers (Mgal/d):

	GW	SW
City of Buena Vista	0.93	0.00

### Withdrawals by Major Industrial Groups (Mgal/d):

	SIC	GW	SW
	None		

## MERIWETHER

Population: 20,700  
 Population served by public supply: 9,760  
 Acres irrigated: 350  
 Hydroelectric use (Mgal/d): 0

WITHDRAWALS IN MILLION GALLONS PER DAY							
	Public Supply	Domestic & Commercial	Industry & Mining	Irrigation	Livestock	Thermo-electric	TOTALS
Ground Water	0.36	0.91	0.35	0.00	0.81	0.00	2.43
Surface Water	0.98	0.00	0.00	0.08	0.96	0.00	2.02
<b>TOTALS</b>	<b>1.34</b>	<b>0.91</b>	<b>0.35</b>	<b>0.08</b>	<b>1.77</b>	<b>0.00</b>	<b>4.45</b>

### Withdrawals by Major Public Suppliers (Mgal/d):

	GW	SW
City of Greenville	0.11	0.06
Lone Oak Water System	0.05	0.00
Town of Luthersville	0.04	0.00
City of Manchester	0.00	0.62
City of Warm Springs	0.10	0.00
Town of Woodbury	0.00	0.30

### Withdrawals by Major Industrial Groups (Mgal/d):

SIC	GW	SW
20 Food	0.04	0.00
24 Lumber	0.31	0.00

## MILLER

Population: 6,900  
 Population served by public supply: 2,070  
 Acres irrigated: 59,300  
 Hydroelectric use (Mgal/d): 0

WITHDRAWALS IN MILLION GALLONS PER DAY							
	Public Supply	Domestic & Commercial	Industry & Mining	Irrigation	Livestock	Thermo-electric	TOTALS
Ground Water	0.30	0.36	0.01	22.18	0.18	0.00	23.03
Surface Water	0.00	0.00	0.00	0.69	0.02	0.00	0.71
<b>TOTALS</b>	<b>0.30</b>	<b>0.36</b>	<b>0.01</b>	<b>22.87</b>	<b>0.20</b>	<b>0.00</b>	<b>23.74</b>

### Withdrawals by Major Public Suppliers (Mgal/d):

	GW	SW
City of Colquitt	0.30	0.00

### Withdrawals by Major Industrial Groups (Mgal/d):

SIC	GW	SW
20 Food	0.01	0.00



## MITCHELL

Population: 21,700  
 Population served by public supply: 11,420  
 Acres irrigated: 54,510  
 Hydroelectric use (Mgal/d): 0

WITHDRAWALS IN MILLION GALLONS PER DAY							
	Public Supply	Domestic & Commercial	Industry & Mining	Irrigation	Livestock	Thermo-electric	TOTALS
Ground Water	2.86	0.78	0.00	11.00	0.29	0.00	14.93
Surface Water	0.00	0.00	0.00	0.84	0.03	0.00	0.87
TOTALS	2.86	0.78	0.00	11.84	0.32	0.00	15.80

### Withdrawals by Major Public Suppliers (Mgal/d):

	GW	SW
City of Camilla	1.96	0.00
Hinsonton Water Assoc.	0.01	0.00
City of Pelham	0.78	0.00
Town of Sale City	0.05	0.00
City of Baconton	0.05	0.00

### Withdrawals by Major Industrial Groups (Mgal/d):

SIC	GW	SW
None		

## MONROE

Population: 15,400  
 Population served by public supply: 6,050  
 Acres irrigated: 1,030  
 Hydroelectric use (Mgal/d): 0

WITHDRAWALS IN MILLION GALLONS PER DAY							
	Public Supply	Domestic & Commercial	Industry & Mining	Irrigation	Livestock	Thermo-electric	TOTALS
Ground Water	0.04	0.78	0.00	0.08	2.12	0.05	3.07
Surface Water	0.62	0.00	3.66	0.18	2.18	9.22	15.86
TOTALS	0.66	0.78	3.66	0.26	4.30	9.27	18.93

### Withdrawals by Major Public Suppliers (Mgal/d):

	GW	SW
City of Culloden	0.02	0.00
City of Forsyth	0.00	0.62

### Withdrawals by Major Industrial Groups (Mgal/d):

SIC	GW	SW
22 Textiles	0.00	3.66

## MONTGOMERY

Population: 7,000  
 Population served by public supply: 3,460  
 Acres irrigated: 2,630  
 Hydroelectric use (Mgal/d): 0

WITHDRAWALS IN MILLION GALLONS PER DAY							
	Public Supply	Domestic & Commercial	Industry & Mining	Irrigation	Livestock	Thermo-electric	TOTALS
Ground Water	0.33	0.32	0.00	1.03	0.04	0.00	1.72
Surface Water	0.00	0.00	0.00	0.88	0.04	0.00	0.92
TOTALS	0.33	0.32	0.00	1.91	0.08	0.00	2.64

### Withdrawals by Major Public Suppliers (Mgal/d):

	GW	SW
Town of Ailey	0.04	0.00
Town of Alston	0.01	0.00
Charlotte Water Assoc.	0.01	0.00
City of Mt Vernon	0.19	0.00
Village of Tarrytown	0.01	0.00
Town of Uvalda	0.05	0.00

### Withdrawals by Major Industrial Groups (Mgal/d):

SIC	GW	SW
None		

## MORGAN

Population: 12,400  
 Population served by public supply: 4,310  
 Acres irrigated: 3,170  
 Hydroelectric use (Mgal/d): 0

WITHDRAWALS IN MILLION GALLONS PER DAY							
	Public Supply	Domestic & Commercial	Industry & Mining	Irrigation	Livestock	Thermo-electric	TOTALS
Ground Water	0.29	0.62	0.00	0.47	0.11	0.00	1.49
Surface Water	0.73	0.00	0.00	1.16	0.28	0.00	2.17
TOTALS	1.02	0.62	0.00	1.63	0.39	0.00	3.66

### Withdrawals by Major Public Suppliers (Mgal/d):

	GW	SW
Town of Bostwick	0.00	0.00
Town of Buckhead	0.02	0.00
City of Madison	0.23	0.73
City of Rutledge	0.03	0.00

### Withdrawals by Major Industrial Groups (Mgal/d):

SIC	GW	SW
None		

## MURRAY

Population: 21,700  
 Population served by public supply: 2,680  
 Acres irrigated: 350  
 Hydroelectric use (Mgal/d): 1,163

WITHDRAWALS IN MILLION GALLONS PER DAY							
	Public Supply	Domestic & Commercial	Industry & Mining	Irrigation	Livestock	Thermo-electric	TOTALS
Ground Water	1.24	1.47	0.00	0.00	0.06	0.00	2.77
Surface Water	0.34	0.02	0.00	0.18	0.06	0.00	0.60
TOTALS	1.58	1.49	0.00	0.18	0.12	0.00	3.37

### Withdrawals by Major Public Suppliers (Mgal/d):

	GW	SW
City of Chatsworth	1.22	0.34

### Withdrawals by Major Industrial Groups (Mgal/d):

	SIC	GW	SW
	None		

## MUSCOGEE

Population: 178,500  
 Population served by public supply: 175,950  
 Acres irrigated: 300  
 Hydroelectric use (Mgal/d): 6,018

WITHDRAWALS IN MILLION GALLONS PER DAY							
	Public Supply	Domestic & Commercial	Industry & Mining	Irrigation	Livestock	Thermo-electric	TOTALS
Ground Water	0.03	0.22	0.00	0.00	0.01	0.00	0.26
Surface Water	30.95	0.00	0.60	0.79	0.02	0.00	32.36
TOTALS	30.98	0.22	0.60	0.79	0.03	0.00	32.62

### Withdrawals by Major Public Suppliers (Mgal/d):

	GW	SW
City of Columbus	0.00	30.95

### Withdrawals by Major Industrial Groups (Mgal/d):

	SIC	GW	SW
	22 Textiles	0.00	0.60

## NEWTON

Population: 39,000  
 Population served by public supply: 18,770  
 Acres irrigated: 40  
 Hydroelectric use (Mgal/d): 112

WITHDRAWALS IN MILLION GALLONS PER DAY							
	Public Supply	Domestic & Commercial	Industry & Mining	Irrigation	Livestock	Thermo-electric	TOTALS
Ground Water	0.27	1.56	0.00	0.00	0.02	0.00	1.85
Surface Water	3.04	0.00	0.47	0.03	0.12	0.00	3.66
<b>TOTALS</b>	<b>3.31</b>	<b>1.56</b>	<b>0.47</b>	<b>0.03</b>	<b>0.14</b>	<b>0.00</b>	<b>5.51</b>

### Withdrawals by Major Public Suppliers (Mgal/d):

	GW	SW
Almon Community	0.04	0.00
City of Covington	0.00	3.00
Town of Mansfield	0.03	0.00
Town of Newborn	0.02	0.00
Town of Porterdale	0.00	0.04

### Withdrawals by Major Industrial Groups (Mgal/d):

SIC	GW	SW
22 Textiles	0.00	0.47

## OCONEE

Population: 14,600  
 Population served by public supply: 4,150  
 Acres irrigated: 520  
 Hydroelectric use (Mgal/d): 166

WITHDRAWALS IN MILLION GALLONS PER DAY							
	Public Supply	Domestic & Commercial	Industry & Mining	Irrigation	Livestock	Thermo-electric	TOTALS
Ground Water	0.33	0.78	0.02	0.04	0.21	0.00	1.38
Surface Water	0.00	0.00	0.00	0.06	0.10	0.00	0.16
<b>TOTALS</b>	<b>0.33</b>	<b>0.78</b>	<b>0.02</b>	<b>0.10</b>	<b>0.31</b>	<b>0.00</b>	<b>1.54</b>

### Withdrawals by Major Public Suppliers (Mgal/d):

	GW	SW
Oconee County Utility Auth.	0.12	0.00

### Withdrawals by Major Industrial Groups (Mgal/d):

SIC	GW	SW
20 Food	0.02	0.00

## OGLETHORPE

Population: 9,400  
 Population served by public supply: 1,170  
 Acres irrigated: 610  
 Hydroelectric use (Mgal/d): 0

WITHDRAWALS IN MILLION GALLONS PER DAY							
	Public Supply	Domestic & Commercial	Industry & Mining	Irrigation	Livestock	Thermo-electric	TOTALS
Ground Water	0.06	0.62	0.00	0.05	0.15	0.00	0.88
Surface Water	0.19	0.00	0.00	0.05	0.10	0.00	0.34
TOTALS	0.25	0.62	0.00	0.10	0.25	0.00	1.22

### Withdrawals by Major Public Suppliers (Mgal/d):

	GW	SW
City of Arnoldsville	0.01	0.00
City of Crawford	0.00	0.19
City of Lexington	0.04	0.00
Town of Maxeys	0.01	0.00

### Withdrawals by Major Industrial Groups (Mgal/d):

	SIC
	None

## PAULDING

Population: 30,600  
 Population served by public supply: 14,060  
 Acres irrigated: 20  
 Hydroelectric use (Mgal/d): 0

WITHDRAWALS IN MILLION GALLONS PER DAY							
	Public Supply	Domestic & Commercial	Industry & Mining	Irrigation	Livestock	Thermo-electric	TOTALS
Ground Water	0.12	0.12	0.00	0.02	0.08	0.00	0.34
Surface Water	0.31	0.00	0.00	0.02	0.05	0.00	0.38
TOTALS	0.43	0.12	0.00	0.04	0.13	0.00	0.72

### Withdrawals by Major Public Suppliers (Mgal/d):

	GW	SW
City of Dallas	0.00	0.31
City of Hiram	0.11	0.00

### Withdrawals by Major Industrial Groups (Mgal/d):

	SIC
	None

## PEACH

Population: 19,600  
 Population served by public supply: 13,120  
 Acres irrigated: 5,800  
 Hydroelectric use (Mgal/d): 0

WITHDRAWALS IN MILLION GALLONS PER DAY							
	Public Supply	Domestic & Commercial	Industry & Mining	Irrigation	Livestock	Thermo-electric	TOTALS
Ground Water	2.10	0.52	0.01	1.76	0.01	0.00	4.40
Surface Water	0.00	0.00	0.00	0.36	0.03	0.00	0.39
TOTALS	2.10	0.52	0.01	2.12	0.04	0.00	4.79

### Withdrawals by Major Public Suppliers (Mgal/d):

	GW	SW
City of Byron	0.27	0.00
City of Fort Valley	1.78	0.00

### Withdrawals by Major Industrial Groups (Mgal/d):

SIC	GW	SW
36 Electrical Machinery	0.01	0.00

## PICKENS

Population: 13,300  
 Population served by public supply: 8,160  
 Acres irrigated: 10  
 Hydroelectric use (Mgal/d): 0

WITHDRAWALS IN MILLION GALLONS PER DAY							
	Public Supply	Domestic & Commercial	Industry & Mining	Irrigation	Livestock	Thermo-electric	TOTALS
Ground Water	0.06	0.44	0.00	0.00	0.11	0.00	0.61
Surface Water	0.92	0.08	0.00	0.01	0.04	0.00	1.05
TOTALS	0.98	0.52	0.00	0.01	0.15	0.00	1.66

### Withdrawals by Major Public Suppliers (Mgal/d):

	GW	SW
City of Jasper	0.00	0.77
City of Nelson	0.06	0.00
Pickens County Water Auth.	0.00	0.15

### Withdrawals by Major Industrial Groups (Mgal/d):

SIC	GW	SW
None		

## PIERCE

Population: 12,900  
 Population served by public supply: 4,200  
 Acres irrigated: 3,710  
 Hydroelectric use (Mgal/d): 0

WITHDRAWALS IN MILLION GALLONS PER DAY							
	Public Supply	Domestic & Commercial	Industry & Mining	Irrigation	Livestock	Thermo-electric	TOTALS
Ground Water	0.55	0.67	0.00	1.10	0.06	0.00	2.38
Surface Water	0.00	0.00	0.00	0.62	0.06	0.00	0.68
TOTALS	0.55	0.67	0.00	1.72	0.12	0.00	3.06

### Withdrawals by Major Public Suppliers (Mgal/d):

	GW	SW
City of Blackshear	0.44	0.00
City of Patterson	0.09	0.00

### Withdrawals by Major Industrial Groups (Mgal/d):

SIC	GW	SW
None		

## PIKE

Population: 9,000  
 Population served by public supply: 2,240  
 Acres irrigated: 570  
 Hydroelectric use (Mgal/d): 0

WITHDRAWALS IN MILLION GALLONS PER DAY							
	Public Supply	Domestic & Commercial	Industry & Mining	Irrigation	Livestock	Thermo-electric	TOTALS
Ground Water	0.16	0.53	0.00	0.13	0.11	0.00	0.93
Surface Water	0.12	0.00	0.00	0.14	0.19	0.00	0.45
TOTALS	0.28	0.53	0.00	0.27	0.30	0.00	1.38

### Withdrawals by Major Public Suppliers (Mgal/d):

	GW	SW
Town of Concord	0.06	0.00
City of Meansville	0.03	0.00
City of Molena	0.03	0.00
Town of Williamson	0.04	0.00
City of Zebulon	0.00	0.12

### Withdrawals by Major Industrial Groups (Mgal/d):

SIC	GW	SW
None		

## POLK

Population: 33,500  
 Population served by public supply: 25,890  
 Acres irrigated: 10  
 Hydroelectric use (Mgal/d): 0

WITHDRAWALS IN MILLION GALLONS PER DAY							
	Public Supply	Domestic & Commercial	Industry & Mining	Irrigation	Livestock	Thermo-electric	TOTALS
Ground Water	0.44	0.57	0.06	0.01	0.02	0.00	1.10
Surface Water	0.87	0.00	0.07	0.02	0.11	0.00	1.07
TOTALS	1.31	0.57	0.13	0.03	0.13	0.00	2.17

### Withdrawals by Major Public Suppliers (Mgal/d):

	GW	SW
City of Cedartown	0.18	0.00
Polk County Water Auth.	0.25	0.00
City of Rockmart	0.00	0.87

### Withdrawals by Major Industrial Groups (Mgal/d):

SIC	GW	SW
22 Textiles	0.04	0.07
30 Rubber	0.02	0.00

## PULASKI

Population: 8,800  
 Population served by public supply: 5,110  
 Acres irrigated: 23,260  
 Hydroelectric use (Mgal/d): 0

WITHDRAWALS IN MILLION GALLONS PER DAY							
	Public Supply	Domestic & Commercial	Industry & Mining	Irrigation	Livestock	Thermo-electric	TOTALS
Ground Water	0.78	0.28	0.34	8.59	0.04	0.00	10.03
Surface Water	0.00	0.00	0.00	6.75	0.04	0.00	6.79
TOTALS	0.78	0.28	0.34	15.34	0.08	0.00	16.82

### Withdrawals by Major Public Suppliers (Mgal/d):

	GW	SW
Hartford Water Auth.	0.01	0.00
City of Hawkinsville	0.76	0.00

### Withdrawals by Major Industrial Groups (Mgal/d):

SIC	GW	SW
26 Paper	0.34	0.00



## PUTNAM

Population: 11,700  
 Population served by public supply: 5,320  
 Acres irrigated: 430  
 Hydroelectric use (Mgal/d): 4,009

WITHDRAWALS IN MILLION GALLONS PER DAY							
	Public Supply	Domestic & Commercial	Industry & Mining	Irrigation	Livestock	Thermo-electric	TOTALS
Ground Water	0.04	0.54	0.00	0.05	0.00	0.00	0.63
Surface Water	0.78	0.00	0.00	0.08	0.19	1063.50	1064.55
<b>TOTALS</b>	<b>0.82</b>	<b>0.54</b>	<b>0.00</b>	<b>0.13</b>	<b>0.19</b>	<b>1063.50</b>	<b>1065.18</b>

### Withdrawals by Major Public Suppliers (Mgal/d):

	GW	SW
City of Eatonton	0.00	0.78

### Withdrawals by Major Industrial Groups (Mgal/d):

	SIC	GW	SW
	None		

## QUITMAN

Population: 2,300  
 Population served by public supply: 950  
 Acres irrigated: 680  
 Hydroelectric use (Mgal/d): 0

WITHDRAWALS IN MILLION GALLONS PER DAY							
	Public Supply	Domestic & Commercial	Industry & Mining	Irrigation	Livestock	Thermo-electric	TOTALS
Ground Water	0.12	0.10	0.00	0.00	0.01	0.00	0.23
Surface Water	0.00	0.00	0.00	0.20	0.02	0.00	0.22
<b>TOTALS</b>	<b>0.12</b>	<b>0.10</b>	<b>0.00</b>	<b>0.20</b>	<b>0.03</b>	<b>0.00</b>	<b>0.45</b>

### Withdrawals by Major Public Suppliers (Mgal/d):

	GW	SW
Town of Georgetown	0.12	0.00

### Withdrawals by Major Industrial Groups (Mgal/d):

	SIC	GW	SW
	None		

## RABUN

Population: 10,800  
 Population served by public supply: 3,250  
 Acres irrigated: 0  
 Hydroelectric use (Mgal/d): 645

WITHDRAWALS IN MILLION GALLONS PER DAY							
	Public Supply	Domestic & Commercial	Industry & Mining	Irrigation	Livestock	Thermo-electric	TOTALS
Ground Water	0.04	0.84	0.01	0.00	0.05	0.00	0.94
Surface Water	0.70	0.07	1.75	0.00	0.02	0.00	2.54
TOTALS	0.74	0.91	1.76	0.00	0.07	0.00	3.48

### Withdrawals by Major Public Suppliers (Mgal/d):

	GW	SW
City of Clayton	0.00	0.70
Town of Tallulah Falls	0.01	0.00
City of Sky Valley Resort	0.03	0.00

### Withdrawals by Major Industrial Groups (Mgal/d):

SIC	GW	SW
22 Textiles	0.00	1.75
36 Electrical Machinery	0.01	0.00

## RANDOLPH

Population: 9,100  
 Population served by public supply: 6,080  
 Acres irrigated: 23,760  
 Hydroelectric use (Mgal/d): 0

WITHDRAWALS IN MILLION GALLONS PER DAY							
	Public Supply	Domestic & Commercial	Industry & Mining	Irrigation	Livestock	Thermo-electric	TOTALS
Ground Water	0.64	0.26	0.00	3.72	0.05	0.00	4.67
Surface Water	0.00	0.00	0.00	4.36	0.08	0.00	4.44
TOTALS	0.64	0.26	0.00	8.08	0.13	0.00	9.11

### Withdrawals by Major Public Suppliers (Mgal/d):

	GW	SW
City of Coleman	0.05	0.00
City of Cuthbert	0.44	0.00
City of Shellman	0.15	0.00

### Withdrawals by Major Industrial Groups (Mgal/d):

SIC	GW	SW
None		

## RICHMOND

Population: 191,600  
 Population served by public supply: 187,770  
 Acres irrigated: 1,760  
 Hydroelectric use (Mgal/d): 953

WITHDRAWALS IN MILLION GALLONS PER DAY							
	Public Supply	Domestic & Commercial	Industry & Mining	Irrigation	Livestock	Thermo-electric	TOTALS
Ground Water	11.97	0.60	2.70	0.73	0.01	0.00	16.01
Surface Water	23.89	1.18	52.28	0.97	0.03	0.00	78.35
TOTALS	35.86	1.78	54.98	1.70	0.04	0.00	94.36

### Withdrawals by Major Public Suppliers (Mgal/d):

	GW	SW
City of Augusta	0.00	22.86
Town of Blythe	0.03	0.00
Town of Hephzibah	0.26	0.00
Richmond County Water System	11.53	0.00

### Withdrawals by Major Industrial Groups (Mgal/d):

	GW	SW
14 Mining	0.02	0.00
20 Food	0.15	0.00
22 Textiles	1.12	0.00
26 Paper	0.02	42.86
28 Chemicals	0.85	9.42
32 Stone, Clay	0.54	0.00

## ROCKDALE

Population: 44,100  
 Population served by public supply: 38,280  
 Acres irrigated: 360  
 Hydroelectric use (Mgal/d): 0

WITHDRAWALS IN MILLION GALLONS PER DAY							
	Public Supply	Domestic & Commercial	Industry & Mining	Irrigation	Livestock	Thermo-electric	TOTALS
Ground Water	0.44	0.48	0.00	0.71	0.01	0.00	1.64
Surface Water	1.66	0.00	0.00	0.35	0.02	0.00	2.03
TOTALS	2.10	0.48	0.00	1.06	0.03	0.00	3.67

### Withdrawals by Major Public Suppliers (Mgal/d):

	GW	SW
City of Conyers	0.28	1.66
Milstead Water System	0.11	0.00

### Withdrawals by Major Industrial Groups (Mgal/d):

	GW	SW
None		

## SCHLEY

Population: 3,400  
 Population served by public supply: 1,680  
 Acres irrigated: 2,020  
 Hydroelectric use (Mgal/d): 0

WITHDRAWALS IN MILLION GALLONS PER DAY							
	Public Supply	Domestic & Commercial	Industry & Mining	Irrigation	Livestock	Thermo-electric	TOTALS
Ground Water	0.21	0.13	0.00	0.00	0.03	0.00	0.37
Surface Water	0.00	0.00	0.00	1.45	0.03	0.00	1.48
<b>TOTALS</b>	<b>0.21</b>	<b>0.13</b>	<b>0.00</b>	<b>1.45</b>	<b>0.06</b>	<b>0.00</b>	<b>1.85</b>

Withdrawals by Major Public Suppliers (Mgal/d):

Withdrawals by Major Industrial Groups (Mgal/d):

	GW	SW	SIC	GW	SW
City of Ellaville	0.21	0.00	None		

## SCREVEN

Population: 14,600  
 Population served by public supply: 4,750  
 Acres irrigated: 17,910  
 Hydroelectric use (Mgal/d): 0

WITHDRAWALS IN MILLION GALLONS PER DAY							
	Public Supply	Domestic & Commercial	Industry & Mining	Irrigation	Livestock	Thermo-electric	TOTALS
Ground Water	1.32	0.81	1.36	4.98	0.12	0.00	8.59
Surface Water	0.00	0.00	0.00	2.69	0.13	0.00	2.82
<b>TOTALS</b>	<b>1.32</b>	<b>0.81</b>	<b>1.36</b>	<b>7.67</b>	<b>0.25</b>	<b>0.00</b>	<b>11.41</b>

Withdrawals by Major Public Suppliers (Mgal/d):

Withdrawals by Major Industrial Groups (Mgal/d):

	GW	SW	SIC	GW	SW
City of Hiltonia	0.03	0.00			
Town of Newington	0.05	0.00	22 Textiles	1.36	0.00
City of Oliver	0.03	0.00			
City of Sylvania	1.20	0.00			

## SEMINOLE

Population: 8,700  
 Population served by public supply: 3,830  
 Acres irrigated: 52,800  
 Hydroelectric use (Mgal/d): 0

WITHDRAWALS IN MILLION GALLONS PER DAY							
	Public Supply	Domestic & Commercial	Industry & Mining	Irrigation	Livestock	Thermo-electric	TOTALS
Ground Water	0.65	0.38	0.00	23.83	0.14	0.00	25.00
Surface Water	0.00	0.00	0.00	1.79	0.02	0.00	1.81
TOTALS	0.65	0.38	0.00	25.62	0.16	0.00	26.81

### Withdrawals by Major Public Suppliers (Mgal/d):

	GW	SW
City of Donalsonville	0.55	0.00
Town of Iron City	0.07	0.00

### Withdrawals by Major Industrial Groups (Mgal/d):

SIC	GW	SW
None		

## SPALDING

Population: 51,500  
 Population served by public supply: 32,130  
 Acres irrigated: 430  
 Hydroelectric use (Mgal/d): 0

WITHDRAWALS IN MILLION GALLONS PER DAY							
	Public Supply	Domestic & Commercial	Industry & Mining	Irrigation	Livestock	Thermo-electric	TOTALS
Ground Water	0.08	1.47	0.00	0.00	0.01	0.00	1.56
Surface Water	5.45	0.00	0.00	0.25	0.08	0.00	5.78
TOTALS	5.53	1.47	0.00	0.25	0.09	0.00	7.34

### Withdrawals by Major Public Suppliers (Mgal/d):

	GW	SW
City of Griffin	0.00	5.45
Village of Orchard Hill	0.01	0.00

### Withdrawals by Major Industrial Groups (Mgal/d):

SIC	GW	SW
None		

## STEPHENS

Population: 22,400  
 Population served by public supply: 20,270  
 Acres irrigated: 130  
 Hydroelectric use (Mgal/d): 613

WITHDRAWALS IN MILLION GALLONS PER DAY							
	Public Supply	Domestic & Commercial	Industry & Mining	Irrigation	Livestock	Thermo-electric	TOTALS
Ground Water	0.12	0.31	0.00	0.02	0.10	0.00	0.55
Surface Water	3.54	0.00	0.00	0.03	0.05	0.00	3.62
TOTALS	3.66	0.31	0.00	0.05	0.15	0.00	4.17

### Withdrawals by Major Public Suppliers (Mgal/d):

	GW	SW
Town of Martin	0.04	0.00
City of Toccoa	0.00	3.54

### Withdrawals by Major Industrial Groups (Mgal/d):

SIC	GW	SW
None		

## STEWART

Population: 5,600  
 Population served by public supply: 3,350  
 Acres irrigated: 1,160  
 Hydroelectric use (Mgal/d): 0

WITHDRAWALS IN MILLION GALLONS PER DAY							
	Public Supply	Domestic & Commercial	Industry & Mining	Irrigation	Livestock	Thermo-electric	TOTALS
Ground Water	0.37	0.18	0.00	0.69	0.02	0.00	1.26
Surface Water	0.00	0.00	0.00	0.69	0.03	0.00	0.72
TOTALS	0.37	0.18	0.00	1.38	0.05	0.00	1.98

### Withdrawals by Major Public Suppliers (Mgal/d):

	GW	SW
City of Lumpkin	0.19	0.00
City of Omaha	0.01	0.00
City of Richland	0.17	0.00

### Withdrawals by Major Industrial Groups (Mgal/d):

SIC	GW	SW
None		

## SUMTER

Population: 30,200  
 Population served by public supply: 18,990  
 Acres irrigated: 38,900  
 Hydroelectric use (Mgal/d): 0

WITHDRAWALS IN MILLION GALLONS PER DAY							
	Public Supply	Domestic & Commercial	Industry & Mining	Irrigation	Livestock	Thermo-electric	TOTALS
Ground Water	3.31	0.95	0.01	7.52	0.10	0.00	11.89
Surface Water	0.00	0.00	0.00	9.58	0.16	0.00	9.74
<b>TOTALS</b>	<b>3.31</b>	<b>0.95</b>	<b>0.01</b>	<b>17.10</b>	<b>0.26</b>	<b>0.00</b>	<b>21.63</b>

### Withdrawals by Major Public Suppliers (Mgal/d):

	GW	SW
Village of Andersonville	0.02	0.00
City of Americus	2.96	0.00
Village of Desoto	0.04	0.00
Village of Leslie	0.07	0.00
City of Plains	0.16	0.00

### Withdrawals by Major Industrial Groups (Mgal/d):

	GW	SW
30 Rubber	0.01	0.00

## TALBOT

Population: 6,700  
 Population served by public supply: 2,230  
 Acres irrigated: 460  
 Hydroelectric use (Mgal/d): 0

WITHDRAWALS IN MILLION GALLONS PER DAY							
	Public Supply	Domestic & Commercial	Industry & Mining	Irrigation	Livestock	Thermo-electric	TOTALS
Ground Water	0.11	0.34	0.00	0.06	1.14	0.00	1.65
Surface Water	0.00	0.00	0.00	0.04	1.19	0.00	1.23
<b>TOTALS</b>	<b>0.11</b>	<b>0.34</b>	<b>0.00</b>	<b>0.10</b>	<b>2.33</b>	<b>0.00</b>	<b>2.88</b>

### Withdrawals by Major Public Suppliers (Mgal/d):

	GW	SW
Town of Geneva	0.02	0.00
Town of Junction City	0.01	0.00
City of Talbotton	0.08	0.00

### Withdrawals by Major Industrial Groups (Mgal/d):

	GW	SW
None		

## TALIAFERRO

Population: 2,100  
 Population served by public supply: 500  
 Acres irrigated: 0  
 Hydroelectric use (Mgal/d): 0

WITHDRAWALS IN MILLION GALLONS PER DAY							
	Public Supply	Domestic & Commercial	Industry & Mining	Irrigation	Livestock	Thermo-electric	TOTALS
Ground Water	0.05	0.13	0.00	0.00	0.00	0.00	0.18
Surface Water	0.00	0.00	0.00	0.00	0.03	0.00	0.03
<b>TOTALS</b>	<b>0.05</b>	<b>0.13</b>	<b>0.00</b>	<b>0.00</b>	<b>0.03</b>	<b>0.00</b>	<b>0.21</b>

### Withdrawals by Major Public Suppliers (Mgal/d):

### Withdrawals by Major Industrial Groups (Mgal/d):

	GW	SW	SIC	GW	SW
City of Crawfordville	0.05	0.00	None		

## TATTNALL

Population: 17,900  
 Population served by public supply: 7,850  
 Acres irrigated: 7,120  
 Hydroelectric use (Mgal/d): 0

WITHDRAWALS IN MILLION GALLONS PER DAY							
	Public Supply	Domestic & Commercial	Industry & Mining	Irrigation	Livestock	Thermo-electric	TOTALS
Ground Water	1.06	1.54	0.00	0.98	0.19	0.00	3.77
Surface Water	0.00	0.00	0.00	0.94	0.10	0.00	1.04
<b>TOTALS</b>	<b>1.06</b>	<b>1.54</b>	<b>0.00</b>	<b>1.92</b>	<b>0.29</b>	<b>0.00</b>	<b>4.81</b>

### Withdrawals by Major Public Suppliers (Mgal/d):

### Withdrawals by Major Industrial Groups (Mgal/d):

	GW	SW	SIC	GW	SW
City of Cobbtown	0.07	0.00	None		
City of Collins	0.06	0.00			
City of Glennville	0.50	0.00			
City of Manassas	0.02	0.00			
City of Reidsville	0.40	0.00			



## TAYLOR

Population: 8,000  
 Population served by public supply: 4,240  
 Acres irrigated: 2,380  
 Hydroelectric use (Mgal/d): 0

WITHDRAWALS IN MILLION GALLONS PER DAY							
	Public Supply	Domestic & Commercial	Industry & Mining	Irrigation	Livestock	Thermo-electric	TOTALS
Ground Water	0.63	0.28	0.11	0.19	0.09	0.00	1.30
Surface Water	0.00	0.00	0.00	0.60	0.09	0.00	0.69
TOTALS	0.63	0.28	0.11	0.79	0.18	0.00	1.99

### Withdrawals by Major Public Suppliers (Mgal/d):

	GW	SW
Town of Butler	0.44	0.00
Town of Reynolds	0.19	0.00

### Withdrawals by Major Industrial Groups (Mgal/d):

SIC	GW	SW
23 Apparel	0.11	0.00

## TELFAIR

Population: 11,200  
 Population served by public supply: 7,770  
 Acres irrigated: 10,590  
 Hydroelectric use (Mgal/d): 0

WITHDRAWALS IN MILLION GALLONS PER DAY							
	Public Supply	Domestic & Commercial	Industry & Mining	Irrigation	Livestock	Thermo-electric	TOTALS
Ground Water	1.54	0.27	0.16	3.38	0.09	0.00	5.44
Surface Water	0.00	0.00	0.00	1.25	0.07	0.00	1.32
TOTALS	1.54	0.27	0.16	4.63	0.16	0.00	6.76

### Withdrawals by Major Public Suppliers (Mgal/d):

	GW	SW
Town of Jacksonville	0.03	0.00
City of Lumber City	0.88	0.00
City of McRae	0.34	0.00
Town of Milan	0.11	0.00
City of Scotland	0.18	0.00

### Withdrawals by Major Industrial Groups (Mgal/d):

SIC	GW	SW
35 Machinery, ex. Elec.	0.16	0.00

## TERRELL

Population: 11,600  
 Population served by public supply: 6,900  
 Acres irrigated: 12,500  
 Hydroelectric use (Mgal/d): 0

WITHDRAWALS IN MILLION GALLONS PER DAY							
	Public Supply	Domestic & Commercial	Industry & Mining	Irrigation	Livestock	Thermo-electric	TOTALS
Ground Water	2.37	0.36	0.00	2.84	0.02	0.00	5.59
Surface Water	0.00	0.00	0.00	2.42	0.05	0.00	2.47
TOTALS	2.37	0.36	0.00	5.26	0.07	0.00	8.06

### Withdrawals by Major Public Suppliers (Mgal/d):

	GW	SW
Town of Bronwood	1.12	0.00
City of Dawson	1.13	0.00
Town of Parrott	0.03	0.00
Town of Sasser	0.08	0.00

### Withdrawals by Major Industrial Groups (Mgal/d):

SIC	GW	SW
None		

## THOMAS

Population: 38,300  
 Population served by public supply: 25,240  
 Acres irrigated: 7,700  
 Hydroelectric use (Mgal/d): 0

WITHDRAWALS IN MILLION GALLONS PER DAY							
	Public Supply	Domestic & Commercial	Industry & Mining	Irrigation	Livestock	Thermo-electric	TOTALS
Ground Water	5.19	0.99	1.28	1.45	0.10	0.00	9.01
Surface Water	0.00	0.00	0.00	0.62	0.12	0.00	0.74
TOTALS	5.19	0.99	1.28	2.07	0.22	0.00	9.75

### Withdrawals by Major Public Suppliers (Mgal/d):

	GW	SW
City of Boston	0.13	0.00
Town of Barwick	0.05	0.00
City of Coolidge	0.05	0.00
City of Meigs	0.14	0.00
Town of Ochlocknee	0.12	0.00
City of Pavo	0.08	0.00
City of Thomasville	4.51	0.00

### Withdrawals by Major Industrial Groups (Mgal/d):

SIC	GW	SW
20 Food	0.64	0.00
28 Chemicals	0.01	0.00
32 Stone, Clay	0.63	0.00

## TIFT

Population: 34,000  
 Population served by public supply: 32,510  
 Acres irrigated: 39,630  
 Hydroelectric use (Mgal/d): 0

WITHDRAWALS IN MILLION GALLONS PER DAY							
	Public Supply	Domestic & Commercial	Industry & Mining	Irrigation	Livestock	Thermo-electric	TOTALS
Ground Water	3.26	0.32	0.25	6.48	0.10	0.00	10.41
Surface Water	0.00	0.00	0.00	3.81	0.10	0.00	3.91
TOTALS	3.26	0.32	0.25	10.29	0.20	0.00	14.32

### Withdrawals by Major Public Suppliers (Mgal/d):

	GW	SW
City of Omega	0.19	0.00
Tift County Water System	0.06	0.00
City of Tifton	2.83	0.00
Town of Ty Ty	0.08	0.00

### Withdrawals by Major Industrial Groups (Mgal/d):

SIC	GW	SW
22 Textiles	0.25	0.00

## TOOMBS

Population: 23,600  
 Population served by public supply: 15,990  
 Acres irrigated: 10,210  
 Hydroelectric use (Mgal/d): 0

WITHDRAWALS IN MILLION GALLONS PER DAY							
	Public Supply	Domestic & Commercial	Industry & Mining	Irrigation	Livestock	Thermo-electric	TOTALS
Ground Water	2.16	0.58	0.00	1.51	0.08	0.00	4.33
Surface Water	0.00	0.00	0.00	1.23	0.09	0.00	1.32
TOTALS	2.16	0.58	0.00	2.74	0.17	0.00	5.65

### Withdrawals by Major Public Suppliers (Mgal/d):

	GW	SW
City of Lyons	0.46	0.00
City of Santa Claus	0.01	0.00
City of Vidalia	1.64	0.00

### Withdrawals by Major Industrial Groups (Mgal/d):

SIC	GW	SW
None		

## TOWNS

Population: 6,200  
 Population served by public supply: 5,050  
 Acres irrigated: 0  
 Hydroelectric use (Mgal/d): 0

WITHDRAWALS IN MILLION GALLONS PER DAY							
	Public Supply	Domestic & Commercial	Industry & Mining	Irrigation	Livestock	Thermo-electric	TOTALS
Ground Water	0.27	0.16	0.00	0.00	0.01	0.00	0.44
Surface Water	0.00	0.00	0.00	0.00	0.03	0.00	0.03
<b>TOTALS</b>	<b>0.27</b>	<b>0.16</b>	<b>0.00</b>	<b>0.00</b>	<b>0.04</b>	<b>0.00</b>	<b>0.47</b>

### Withdrawals by Major Public Suppliers (Mgal/d):

### Withdrawals by Major Industrial Groups (Mgal/d):

	GW	SW	SIC	GW	SW
Town of Hiawassee	0.22	0.00	None		
Towns County Water System	0.05	0.00			

## TREUTLEN

Population: 6,000  
 Population served by public supply: 2,980  
 Acres irrigated: 850  
 Hydroelectric use (Mgal/d): 0

WITHDRAWALS IN MILLION GALLONS PER DAY							
	Public Supply	Domestic & Commercial	Industry & Mining	Irrigation	Livestock	Thermo-electric	TOTALS
Ground Water	0.25	0.24	0.00	0.10	0.02	0.00	0.61
Surface Water	0.00	0.00	0.00	0.08	0.03	0.00	0.11
<b>TOTALS</b>	<b>0.25</b>	<b>0.24</b>	<b>0.00</b>	<b>0.18</b>	<b>0.05</b>	<b>0.00</b>	<b>0.72</b>

### Withdrawals by Major Public Suppliers (Mgal/d):

### Withdrawals by Major Industrial Groups (Mgal/d):

	GW	SW	SIC	GW	SW
City of Soperton	0.25	0.00	None		

## TROUP

Population: 53,700  
 Population served by public supply: 37,860  
 Acres irrigated: 230  
 Hydroelectric use (Mgal/d): 2,409

WITHDRAWALS IN MILLION GALLONS PER DAY							
	Public Supply	Domestic & Commercial	Industry & Mining	Irrigation	Livestock	Thermo-electric	TOTALS
Ground Water	0.02	1.82	0.08	0.04	0.00	0.00	1.96
Surface Water	9.17	0.00	1.00	0.11	0.12	0.00	10.40
TOTALS	9.19	1.82	1.08	0.15	0.12	0.00	12.36

### Withdrawals by Major Public Suppliers (Mgal/d):

	GW	SW
City of Hogansville	0.00	0.34
City of Lagrange	0.00	8.04
Mountville Water Assoc.	0.02	0.00
City of West Point	0.00	0.79

### Withdrawals by Major Industrial Groups (Mgal/d):

SIC	GW	SW
22 Textiles	0.04	1.00
30 Rubber	0.04	0.00

## TURNER

Population: 9,600  
 Population served by public supply: 5,640  
 Acres irrigated: 6,990  
 Hydroelectric use (Mgal/d): 0

WITHDRAWALS IN MILLION GALLONS PER DAY							
	Public Supply	Domestic & Commercial	Industry & Mining	Irrigation	Livestock	Thermo-electric	TOTALS
Ground Water	1.01	0.37	0.00	2.00	0.05	0.00	3.43
Surface Water	0.00	0.00	0.00	1.51	0.10	0.00	1.61
TOTALS	1.01	0.37	0.00	3.51	0.15	0.00	5.04

### Withdrawals by Major Public Suppliers (Mgal/d):

	GW	SW
City of Ashburn	0.91	0.00
Town of Rebecca	0.02	0.00
City of Sycamore	0.07	0.00

### Withdrawals by Major Industrial Groups (Mgal/d):

SIC	GW	SW
None		

## TWIGGS

Population: 9,900  
 Population served by public supply: 2,170  
 Acres irrigated: 130  
 Hydroelectric use (Mgal/d): 0

WITHDRAWALS IN MILLION GALLONS PER DAY							
	Public Supply	Domestic & Commercial	Industry & Mining	Irrigation	Livestock	Thermo-electric	TOTALS
Ground Water	0.22	0.60	20.14	0.03	0.01	0.00	21.00
Surface Water	0.00	0.00	0.00	0.00	0.03	0.00	0.03
<b>TOTALS</b>	<b>0.22</b>	<b>0.60</b>	<b>20.14</b>	<b>0.03</b>	<b>0.04</b>	<b>0.00</b>	<b>21.03</b>

### Withdrawals by Major Public Suppliers (Mgal/d):

	GW	SW
Town of Danville	0.03	0.00
City of Jeffersonville	0.18	0.00

### Withdrawals by Major Industrial Groups (Mgal/d):

SIC	GW	SW
14 Mining	0.32	0.00
32 Stone, Clay	19.82	0.00

## UNION

Population: 10,500  
 Population served by public supply: 5,560  
 Acres irrigated: 100  
 Hydroelectric use (Mgal/d): 163

WITHDRAWALS IN MILLION GALLONS PER DAY							
	Public Supply	Domestic & Commercial	Industry & Mining	Irrigation	Livestock	Thermo-electric	TOTALS
Ground Water	0.41	0.39	0.01	0.00	0.05	0.00	0.86
Surface Water	0.00	0.00	0.00	0.09	0.05	0.00	0.14
<b>TOTALS</b>	<b>0.41</b>	<b>0.39</b>	<b>0.01</b>	<b>0.09</b>	<b>0.10</b>	<b>0.00</b>	<b>1.00</b>

### Withdrawals by Major Public Suppliers (Mgal/d):

	GW	SW
City of Blairsville	0.28	0.00
Coosa Water Auth.	0.06	0.00
Notla Water Auth.	0.07	0.00

### Withdrawals by Major Industrial Groups (Mgal/d):

SIC	GW	SW
23 Apparel	0.01	0.00

## UPSON

Population: 26,100  
 Population served by public supply: 16,400  
 Acres irrigated: 1,210  
 Hydroelectric use (Mgal/d): 0

WITHDRAWALS IN MILLION GALLONS PER DAY							
	Public Supply	Domestic & Commercial	Industry & Mining	Irrigation	Livestock	Thermo-electric	TOTALS
Ground Water	0.14	0.80	0.01	0.27	2.06	0.00	3.28
Surface Water	1.79	0.00	2.97	0.31	2.09	0.00	7.16
TOTALS	1.93	0.80	2.98	0.58	4.15	0.00	10.44

### Withdrawals by Major Public Suppliers (Mgal/d):

	GW	SW
City of Thomaston	0.00	1.79
Town of Yatesville	0.04	0.00

### Withdrawals by Major Industrial Groups (Mgal/d):

SIC	GW	SW
22 Textiles	0.00	2.97
24 Lumber	0.01	0.00

## WALKER

Population: 56,300  
 Population served by public supply: 51,310  
 Acres irrigated: 250  
 Hydroelectric use (Mgal/d): 0

WITHDRAWALS IN MILLION GALLONS PER DAY							
	Public Supply	Domestic & Commercial	Industry & Mining	Irrigation	Livestock	Thermo-electric	TOTALS
Ground Water	2.70	0.43	0.77	0.05	0.07	0.00	4.02
Surface Water	2.86	0.00	3.42	0.08	0.17	0.00	6.53
TOTALS	5.56	0.43	4.19	0.13	0.24	0.00	10.55

### Withdrawals by Major Public Suppliers (Mgal/d):

	GW	SW
City of Chickamauga	0.19	0.00
Kensington Water & Sewer	0.37	0.00
City of Lafayette	1.80	0.82
Walker County Water & Sewer	0.14	2.04
Walker County Rural Water & Sewer Auth.	0.20	0.00

### Withdrawals by Major Industrial Groups (Mgal/d):

SIC	GW	SW
22 Textiles	0.77	2.42
30 Rubber	0.00	1.00

## WALTON

Population: 33,000  
 Population served by public supply: 17,870  
 Acres irrigated: 320  
 Hydroelectric use (Mgal/d): 0

WITHDRAWALS IN MILLION GALLONS PER DAY							
	Public Supply	Domestic & Commercial	Industry & Mining	Irrigation	Livestock	Thermo-electric	TOTALS
Ground Water	0.07	1.17	0.04	0.07	0.09	0.00	1.44
Surface Water	3.00	0.00	0.00	0.07	0.16	0.00	3.23
TOTALS	3.07	1.17	0.04	0.14	0.25	0.00	4.67

### Withdrawals by Major Public Suppliers (Mgal/d):

	GW	SW
Town of Jersey	0.03	0.00
City of Monroe	0.00	2.60
City of Social Circle	0.00	0.40

### Withdrawals by Major Industrial Groups (Mgal/d):

SIC	GW	SW
22 Textiles	0.04	0.00

## WARE

Population: 37,100  
 Population served by public supply: 30,500  
 Acres irrigated: 1,800  
 Hydroelectric use (Mgal/d): 0

WITHDRAWALS IN MILLION GALLONS PER DAY							
	Public Supply	Domestic & Commercial	Industry & Mining	Irrigation	Livestock	Thermo-electric	TOTALS
Ground Water	4.43	1.89	0.72	0.46	0.05	0.00	7.55
Surface Water	0.00	0.03	0.00	0.25	0.04	0.00	0.32
TOTALS	4.43	1.92	0.72	0.71	0.09	0.00	7.87

### Withdrawals by Major Public Suppliers (Mgal/d):

	GW	SW
Manor Water System	0.09	0.00
Ware County Water System	0.70	0.00
City of Waycross	2.45	0.00
Waycross-Ware County Airport	1.15	0.00

### Withdrawals by Major Industrial Groups (Mgal/d):

SIC	GW	SW
20 Food	0.22	0.00
30 Rubber	0.50	0.00



## WARREN

Population: 6,500  
 Population served by public supply: 2,760  
 Acres irrigated: 190  
 Hydroelectric use (Mgal/d): 0

WITHDRAWALS IN MILLION GALLONS PER DAY							
	Public Supply	Domestic & Commercial	Industry & Mining	Irrigation	Livestock	Thermo-electric	TOTALS
Ground Water	0.02	0.28	0.52	0.00	0.01	0.00	0.83
Surface Water	0.35	0.00	0.75	0.06	0.08	0.00	1.24
<b>TOTALS</b>	<b>0.37</b>	<b>0.28</b>	<b>1.27</b>	<b>0.06</b>	<b>0.09</b>	<b>0.00</b>	<b>2.07</b>

### Withdrawals by Major Public Suppliers (Mgal/d):

	GW	SW
Town of Camak	0.01	0.00
Town of Norwood	0.01	0.00
City of Warrenton	0.00	0.35

### Withdrawals by Major Industrial Groups (Mgal/d):

SIC	GW	SW
14 Mining	0.02	0.00
32 Stone, Clay	0.50	0.75

## WASHINGTON

Population: 19,200  
 Population served by public supply: 10,510  
 Acres irrigated: 6,330  
 Hydroelectric use (Mgal/d): 0

WITHDRAWALS IN MILLION GALLONS PER DAY							
	Public Supply	Domestic & Commercial	Industry & Mining	Irrigation	Livestock	Thermo-electric	TOTALS
Ground Water	1.46	0.69	14.75	2.96	0.06	0.00	19.92
Surface Water	0.00	0.00	0.00	0.99	0.11	0.00	1.10
<b>TOTALS</b>	<b>1.46</b>	<b>0.69</b>	<b>14.75</b>	<b>3.95</b>	<b>0.17</b>	<b>0.00</b>	<b>21.02</b>

### Withdrawals by Major Public Suppliers (Mgal/d):

	GW	SW
City of Davisboro	0.03	0.00
Town of Deepstep	0.01	0.00
Town of Harrison	0.02	0.00
Town of Oconee	0.03	0.00
Town of Riddleville	0.01	0.00
City of Sandersville	1.05	0.00
City of Tennille	0.30	0.00
Warthen Water Assoc.	0.01	0.00

### Withdrawals by Major Industrial Groups (Mgal/d):

SIC	GW	SW
14 Mining	2.45	0.00
20 Food	0.03	0.00
32 Stone, Clay	12.27	0.00

## WAYNE

Population: 22,100  
 Population served by public supply: 11,710  
 Acres irrigated: 5,030  
 Hydroelectric use (Mgal/d): 0

WITHDRAWALS IN MILLION GALLONS PER DAY							
	Public Supply	Domestic & Commercial	Industry & Mining	Irrigation	Livestock	Thermo-electric	TOTALS
Ground Water	1.62	0.84	66.59	1.10	0.03	0.00	70.18
Surface Water	0.00	0.00	0.00	0.79	0.05	0.00	0.84
<b>TOTALS</b>	<b>1.62</b>	<b>0.84</b>	<b>66.59</b>	<b>1.89</b>	<b>0.08</b>	<b>0.00</b>	<b>71.02</b>

### Withdrawals by Major Public Suppliers (Mgal/d):

	GW	SW
City of Jesup	1.40	0.00
Town of Odum	0.03	0.00
City of Screven	0.12	0.00

### Withdrawals by Major Industrial Groups (Mgal/d):

	SIC	GW	SW
28 Chemicals		66.59	0.00

## WEBSTER

Population: 2,200  
 Population served by public supply: 800  
 Acres irrigated: 6,750  
 Hydroelectric use (Mgal/d): 0

WITHDRAWALS IN MILLION GALLONS PER DAY							
	Public Supply	Domestic & Commercial	Industry & Mining	Irrigation	Livestock	Thermo-electric	TOTALS
Ground Water	0.08	0.09	0.00	0.70	0.02	0.00	0.89
Surface Water	0.00	0.00	0.00	1.02	0.02	0.00	1.04
<b>TOTALS</b>	<b>0.08</b>	<b>0.09</b>	<b>0.00</b>	<b>1.72</b>	<b>0.04</b>	<b>0.00</b>	<b>1.93</b>

### Withdrawals by Major Public Suppliers (Mgal/d):

	GW	SW
City of Preston	0.07	0.00
Town of Weston	0.01	0.00

### Withdrawals by Major Industrial Groups (Mgal/d):

	SIC	GW	SW
None			

## WHEELER

Population: 5,100  
 Population served by public supply: 2,710  
 Acres irrigated: 2,730  
 Hydroelectric use (Mgal/d): 0

WITHDRAWALS IN MILLION GALLONS PER DAY							
	Public Supply	Domestic & Commercial	Industry & Mining	Irrigation	Livestock	Thermo-electric	TOTALS
Ground Water	0.23	0.18	0.00	0.52	0.04	0.00	0.97
Surface Water	0.00	0.00	0.00	0.29	0.05	0.00	0.34
<b>TOTALS</b>	<b>0.23</b>	<b>0.18</b>	<b>0.00</b>	<b>0.81</b>	<b>0.09</b>	<b>0.00</b>	<b>1.31</b>

### Withdrawals by Major Public Suppliers (Mgal/d):

	GW	SW
City of Alamo	0.17	0.00
City of Glenwood	0.06	0.00

### Withdrawals by Major Industrial Groups (Mgal/d):

SIC	GW	SW
None		

## WHITE

Population: 11,400  
 Population served by public supply: 2,220  
 Acres irrigated: 190  
 Hydroelectric use (Mgal/d): 0

WITHDRAWALS IN MILLION GALLONS PER DAY							
	Public Supply	Domestic & Commercial	Industry & Mining	Irrigation	Livestock	Thermo-electric	TOTALS
Ground Water	0.07	0.75	0.00	0.04	0.21	0.00	1.07
Surface Water	0.22	0.00	1.64	0.09	0.07	0.00	2.02
<b>TOTALS</b>	<b>0.29</b>	<b>0.75</b>	<b>1.64</b>	<b>0.13</b>	<b>0.28</b>	<b>0.00</b>	<b>3.09</b>

### Withdrawals by Major Public Suppliers (Mgal/d):

	GW	SW
City of Cleveland	0.00	0.22
City of Helen	0.04	0.00
City of Robertstown	0.01	0.00

### Withdrawals by Major Industrial Groups (Mgal/d):

SIC	GW	SW
14 Mining	0.00	1.64

## WHITFIELD

Population: 68,400  
 Population served by public supply: 65,370  
 Acres irrigated: 80  
 Hydroelectric use (Mgal/d): 0

WITHDRAWALS IN MILLION GALLONS PER DAY							
	Public Supply	Domestic & Commercial	Industry & Mining	Irrigation	Livestock	Thermo-electric	TOTALS
Ground Water	0.00	0.26	0.03	0.08	0.08	0.00	0.45
Surface Water	33.85	0.00	0.00	0.12	0.11	0.00	34.08
TOTALS	33.85	0.26	0.03	0.20	0.19	0.00	34.53

### Withdrawals by Major Public Suppliers (Mgal/d):

### Withdrawals by Major Industrial Groups (Mgal/d):

	GW	SW	SIC	GW	SW
Dalton Utilities	0.00	33.85	22 Textiles	0.03	0.00

## WILCOX

Population: 7,600  
 Population served by public supply: 3,780  
 Acres irrigated: 25,300  
 Hydroelectric use (Mgal/d): 0

WITHDRAWALS IN MILLION GALLONS PER DAY							
	Public Supply	Domestic & Commercial	Industry & Mining	Irrigation	Livestock	Thermo-electric	TOTALS
Ground Water	0.55	0.29	0.00	11.23	0.04	0.00	12.11
Surface Water	0.00	0.00	0.00	6.60	0.08	0.00	6.68
TOTALS	0.55	0.29	0.00	17.83	0.12	0.00	18.79

### Withdrawals by Major Public Suppliers (Mgal/d):

### Withdrawals by Major Industrial Groups (Mgal/d):

	GW	SW	SIC	GW	SW
City of Abbeville	0.08	0.00	None		
Town of Pineview	0.05	0.00			
City of Pitts	0.02	0.00			
City of Rochelle	0.40	0.00			
Town of Seville	0.00	0.00			

## WILKES

Population: 11,300  
 Population served by public supply: 5,800  
 Acres irrigated: 290  
 Hydroelectric use (Mgal/d): 0

WITHDRAWALS IN MILLION GALLONS PER DAY							
	Public Supply	Domestic & Commercial	Industry & Mining	Irrigation	Livestock	Thermo-electric	TOTALS
Ground Water	0.07	0.41	0.00	0.00	0.06	0.00	0.54
Surface Water	2.75	0.00	0.00	0.05	0.20	0.00	3.00
TOTALS	2.82	0.41	0.00	0.05	0.26	0.00	3.54

### Withdrawals by Major Public Suppliers (Mgal/d):

	GW	SW
Rayle Water Assoc.	0.02	0.00
City of Tignall	0.05	0.00
City of Washington	0.00	2.75

### Withdrawals by Major Industrial Groups (Mgal/d):

SIC	GW	SW
None		

## WILKINSON

Population: 10,800  
 Population served by public supply: 6,480  
 Acres irrigated: 620  
 Hydroelectric use (Mgal/d): 0

WITHDRAWALS IN MILLION GALLONS PER DAY							
	Public Supply	Domestic & Commercial	Industry & Mining	Irrigation	Livestock	Thermo-electric	TOTALS
Ground Water	0.93	0.32	25.55	0.24	0.01	0.00	27.05
Surface Water	0.00	0.00	0.00	0.35	0.02	0.00	0.37
TOTALS	0.93	0.32	25.55	0.59	0.03	0.00	27.42

### Withdrawals by Major Public Suppliers (Mgal/d):

	GW	SW
Town of Allentown	0.02	0.00
Town of Gordon	0.32	0.00
Town of Irwinton	0.29	0.00
Town of Ivey	0.05	0.00
Town of McIntyre	0.19	0.00
Town of Toombsboro	0.06	0.00

### Withdrawals by Major Industrial Groups (Mgal/d):

SIC	GW	SW
14 Mining	11.91	0.00
32 Stone, Clay	13.64	0.00

# WORTH

Population: 18,300  
 Population served by public supply: 8,070  
 Acres irrigated: 25,590  
 Hydroelectric use (Mgal/d): 0

WITHDRAWALS IN MILLION GALLONS PER DAY							
	Public Supply	Domestic & Commercial	Industry & Mining	Irrigation	Livestock	Thermo-electric	TOTALS
Ground Water	1.25	0.79	0.00	3.28	0.10	0.00	5.42
Surface Water	0.00	0.00	0.00	2.28	0.15	0.00	2.43
<b>TOTALS</b>	1.25	0.79	0.00	5.56	0.25	0.00	7.85

### Withdrawals by Major Public Suppliers (Mgal/d):

	GW	SW
Isabella Water System	0.04	0.00
City of Poulan	0.07	0.00
Town of Sumner	0.03	0.00
City of Sylvester	1.04	0.00
City of Warwick	0.05	0.00

### Withdrawals by Major Industrial Groups (Mgal/d):

SIC	GW	SW
None		

## APPENDIX





## SIC CODES

Industrial water use is given by industry type and classified by Standard Industrial Classification (SIC) Code. A brief description of the codes used in this publication is given below.

### **14 - MINING AND QUARRYING OF NONMETALLIC MINERALS, EXCEPT FUELS**

This major group includes establishments engaged in mining or quarrying, developing mines, or exploring for nonmetallic minerals, except fuels. Also included are certain well and brine operations, and primary preparation plants, such as those engaged in crushing, grinding, washing, or other concentration.

### **16 - CONSTRUCTION OTHER THAN BUILDING CONSTRUCTION - GENERAL CONTRACTORS**

This major group includes general contractors engaged in heavy construction (including new work, additions, improvements, maintenance, and repair) such as highways and streets, bridges, sewers, railroads, irrigation projects, flood control projects and marine construction, and miscellaneous types of construction work other than buildings. General heavy construction contractors who combine a special trade with the contracting are included in this major group.

### **20 - FOOD AND KINDRED PRODUCTS**

This major group includes establishments manufacturing or processing foods and beverages for human consumption, and certain related products, such as manufactured ice, chewing gum, vegetable and animal fats and oils, and prepared feeds for animals and fowls.

### **22 - TEXTILE MILL PRODUCTS**

This major group includes establishments engaged in performing any of the following operations: (1) preparation of fiber and subsequent manufacturing of yarn, thread, braids, twine, and cordage; (2) manufacturing broad woven fabric, narrow woven fabric, knit fabric and carpets and rugs from yarn; (3) dyeing and finishing fiber, yarn, fabric, and knit apparel; (4) coating, waterproofing, or otherwise treating fabric; (5) the integrated manufacture of knit apparel and other finished articles from yarn; and (6) the manufacture of felt goods, lace goods, nonwoven fabrics and miscellaneous textiles.

### **23 - APPAREL AND OTHER FINISHED PRODUCTS MADE FROM FABRICS AND SIMILAR MATERIALS**

This major group, known as the cutting-up and needle trades, includes establishments producing clothing and fabricating products by cutting and sewing purchased woven or knit textile fabrics and related materials such as leather, rubberized fabrics, plastics, and furs.

### **24 - LUMBER AND WOOD PRODUCTS, EXCEPT FURNITURE**

This major group includes logging camps engaged in cutting timber and pulpwood; merchant sawmills, lathe mills, shingle mills, cooperage stock mills, planing mills, and pulpwood mills and veneer mills engaged in producing lumber and wood basic materials; and estab-

lishments engaged in manufacturing finished articles made entirely or mainly of wood or wood substitutes.

## **26 - PAPER AND ALLIED PRODUCTS**

This major group includes the manufacture of pulps from wood and other cellulose fibers, and from rags; the manufacture of paper and paperboard; and the manufacture of paper and paperboard into converted products such as paper coated off the paper machine, paper bags, paper boxes, and envelopes.

## **28 - CHEMICALS AND ALLIED PRODUCTS**

This major group includes establishments producing basic chemicals, and establishments manufacturing products by predominantly chemical processes. Establishments classified in this major group manufacture three general classes of products: (1) basic chemicals such as acids, alkalies, salts, and organic chemicals; (2) chemical products to be used in further manufacture such as synthetic fibers, plastics materials, dry colors, and pigments; and (3) finished chemical products to be used for ultimate consumption such as drugs, cosmetics, and soaps, or to be used as materials or supplies in other industries such as paints, fertilizers, and explosives.

## **29 - PETROLEUM REFINING AND RELATED INDUSTRIES**

This major group includes establishments primarily engaged in petroleum refining, manufacturing paving and roofing materials, and compounding lubricating oils and greases from purchased materials.

## **30 - RUBBER AND MISCELLANEOUS PLASTICS PRODUCTS**

This major group includes establishments manufacturing from natural, synthetic, or reclaimed rubber, gutta percha, balata, or gutta siak, rubber products such as tires, rubber footwear, mechanical rubber goods, heels and soles, flooring, and rubber sundries.

## **31 - LEATHER AND LEATHER PRODUCTS**

This major group includes establishments engaged in tanning, currying, and finishing hides and skins, and establishments manufacturing finished leather and artificial leather products and some similar products made of other materials.

## **32 - STONE, CLAY, GLASS, AND CONCRETE PRODUCTS**

This major group includes establishments engaged in manufacturing flat glass and other glass products, cement, structural clay products, pottery, concrete and gypsum products, cut stone, abrasive and asbestos products, etc., from materials taken principally from the earth in the form of stone, clay, and sand.

## **33 - PRIMARY METAL INDUSTRIES**

This major group includes establishments engaged in the smelting and refining of ferrous and nonferrous metals from ore, pig, or scrap; in the rolling, drawing, and alloying of ferrous and non-ferrous metals; in the manufacture of castings and other basic products of ferrous and nonferrous metals; and in the manufacture of nails, spikes, and insulated wire and cable.

### **34 - FABRICATED METAL PRODUCTS, EXCEPT MACHINERY AND TRANSPORTATION EQUIPMENT**

This major group includes establishments engaged in fabricating ferrous and nonferrous metal products such as metal cans, tinware, hand tools, cutlery, general hardware, non-electric heating apparatus, fabricated structural metal products, metal forging, metal stamping, ordnance (except vehicles and guided missiles), and a variety of metal and wire products not elsewhere classified.

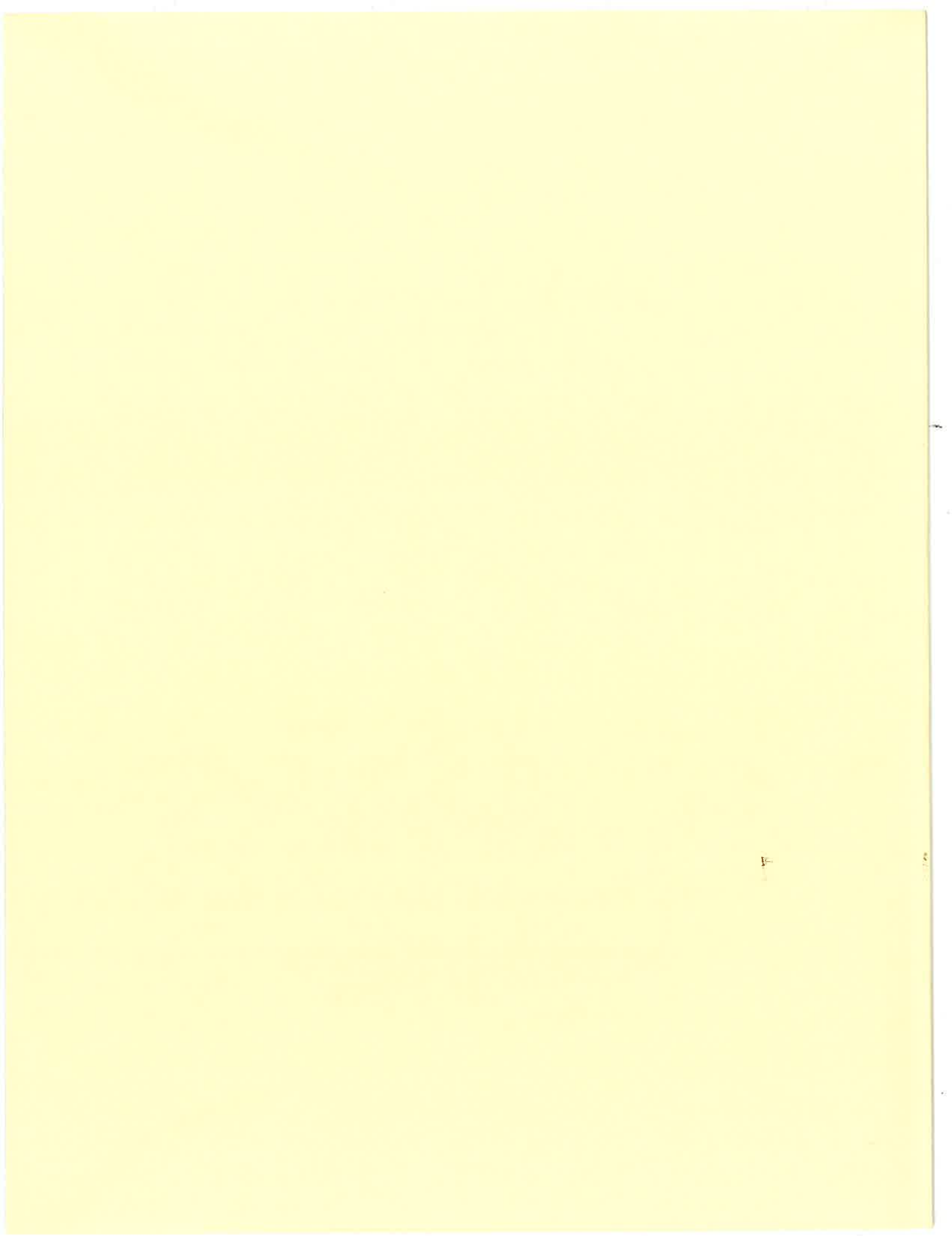
### **35 - MACHINERY, EXCEPT ELECTRICAL**

This major group includes establishments engaged in manufacturing machinery and equipment, other than electrical equipment (Major Group 36) and transportation equipment (Major Group 37).

### **36 - ELECTRICAL AND ELECTRONIC MACHINERY, EQUIPMENT, AND SUPPLIES**

This major group includes establishments engaged in manufacturing machinery, apparatus, and supplies for the generation, storage, transmission, transformation, and utilization of electrical energy.





*The Department of Natural Resources is an equal opportunity employer and offers all persons the opportunity to compete and participate in each area of DNR employment regardless of race, color, religion, sex, national origin, age, handicap, or other non-merit factors.*