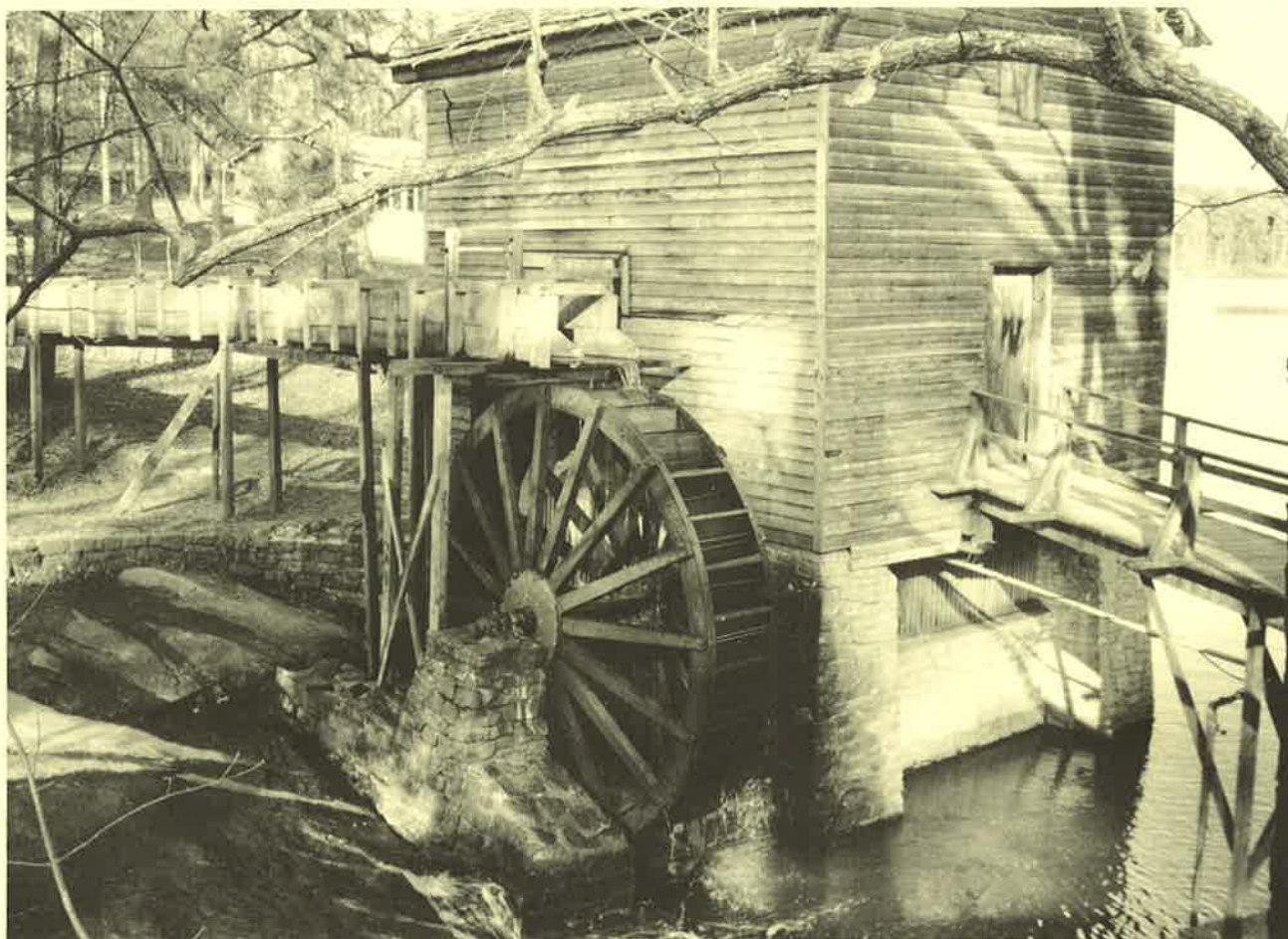


WATER USE IN GEORGIA BY COUNTY FOR 1990

Julia L. Fanning, Glenn A. Doonan, and Lorinda T. Montgomery



**GEORGIA DEPARTMENT OF NATURAL RESOURCES
ENVIRONMENTAL PROTECTION DIVISION
GEORGIA GEOLOGIC SURVEY**

INFORMATION CIRCULAR 90

COVER PHOTOGRAPH: Grist Mill at Stone Mountain Park, Stone Mountain, Georgia,
built in 1869 in Ellijay, Georgia in Fannin County, and moved to Stone Mountain Park in 1965.

WATER USE IN GEORGIA BY COUNTY FOR 1990

by

Julia L. Fanning, Glenn A. Doonan, and Lorinda T. Montgomery

**Prepared in cooperation with the
U.S. Geological Survey**

**DEPARTMENT OF NATURAL RESOURCES
Joe D. Tanner, Commissioner
ENVIRONMENTAL PROTECTION DIVISION
Harold F. Reheis, Director
GEORGIA GEOLOGIC SURVEY
William H. McLemore, State Geologist**

**Atlanta, Georgia
1992**

INFORMATION CIRCULAR 90

CONTENTS

Abstract.....	1
Introduction.....	1
Purpose and scope.....	1
Data collection.....	1
Water use.....	4
Water-use categories.....	4
Public supply.....	4
Domestic and commercial.....	13
Self-supplied industry and mining.....	13
Agriculture.....	13
Power generation.....	14
Summary.....	14
Selected references.....	15
Appendix.....	16
Standard Industrial Classification (SIC) Codes.....	16
Definitions of SIC codes.....	16

ILLUSTRATIONS

Figures 1.-4. Maps showing:	
1. County location map of Georgia.....	2
2. Major river basins in Georgia.....	6
3. Areas of utilization of major aquifers and block diagram showing major aquifers and physiographic provinces of Georgia.....	7
4. Water withdrawals, by county, 1990.....	12

TABLES

Table 1. Sources of water-use data.....	3
2. Georgia water-use totals, by category, 1990.....	5
3. Industrial water use in Georgia by major Standard Industrial Code (SIC) Groups, 1990.....	5
4. Water use, by major river basins, 1990.....	8
5. Water use, by principal aquifers, 1990.....	8
6. Water-use totals, by county, 1990.....	9
7. Ground- and surface-water use, by county, 1990.....	18

CONVERSION FACTORS AND ACRONYMS

These factors may be used to convert inch-pound units used to metric units (International System):

<i>Multiply</i>	<i>By</i>	<i>To obtain</i>
<u>Length</u>		
inch (in.)	25.4	millimeter (mm)
	0.0254	meter (m)
foot (ft)	0.3048	meter (m)
mile (mi)	1.609	kilometer (km)
<u>Area</u>		
square mile (mi ²)	259.0	hectare (ha)
	2.590	square kilometer (km ²)
<u>Volume</u>		
gallon (gal)	3.785	liter (L)
	3.785	cubic decimeter (dm ³)
	0.003785	cubic meter (m ³)
million gallons (Mgal)	3,785	cubic meter (m ³)
	0.003785	cubic hectometer (hm ³)
billion gallons (Bgal)	3.785	cubic hectometer (hm ³)
<u>Flow</u>		
cubic foot per second (ft ³ /s)	0.02832	cubic meter per second (m ³ /s)
gallon per day (gal/d)	0.003785	cubic meter per day (m ³ /d)
million gallons per day (Mgal/d)	0.04381	cubic meter per second (m ³ /s)
billion gallons per day (Bgal/d)	43.81	cubic meter per second (m ³ /s)

ACRONYMS

GWUP	Georgia Water Use Program
GWUDS	Georgia Water Use Data System
EPD	Environmental Protection Division
CES	Cooperative Extension Service
WRMP	Water Resource Management Program
SIC	Standard Industrial Classification

WATER USE IN GEORGIA

BY COUNTY FOR 1990

By Julia L. Fanning^{1/}, Glenn A. Doonan^{1/}, and Lorinda T. Montgomery^{1/}

ABSTRACT

Water-use estimates for 1990 were tabulated for each county in Georgia, by category, using data obtained from various Federal and State agencies. Water-use categories of offstream use include public supply, domestic, commercial, industrial, mining, irrigation, livestock, and thermoelectric power; and instream use includes hydroelectric power generation.

Total offstream water use from ground- and surface-water sources were estimated at 5.3 billion gallons per day in 1990. Withdrawals for industry and agriculture were mostly from ground-water sources.

Thermoelectric power use was the largest surface-water user in the State. Instream water use for hydroelectric plants in the State were estimated at 52 billion gallons per day. Water-use estimates also are included for the major river basins and principal aquifers in the State.

INTRODUCTION

Georgia receives an average 50 inches of rainfall each year (Carter and Stiles, 1983), and withdraws billions of gallons of water each day for a variety of uses. Increases in population, industrial growth, and agricultural practices have caused concern about the stresses placed on the water resources in Georgia. Consistent and accurate statewide water-use data are essential for the management of the resources by Federal, State, county, and local government officials.

^{1/}U.S. Geological Survey, Atlanta, Ga.

The Georgia Department of Natural Resources (EPD), Environmental Protection Division, Georgia Geologic Survey, entered into a cooperative agreement with the U.S. Geological Survey (USGS) to collect, compile, and disseminate data on the principal water users in the State. Water-use data are stored in a central data base, called the Georgia Water-Use Data System (GWUDS), by the USGS, to provide data needed by water managers, hydrologists, and other scientists in managing and protecting the water resources in Georgia.

Purpose and Scope

The purpose of this report is to present water-use estimates for Georgia, by county, for 1990 (fig. 1). The data are provided in tabular form, and follow the same general format as previous water-use reports by the Georgia Water-Use Program for 1980 (Pierce and Barber, 1982); for 1985 (Turlington and others, 1987); and for 1987 (Trent and others, 1990). Water-use estimates also are included by major river basins and ground-water withdrawals, in percent, from principal aquifers in Georgia.

Data Collection

Water-use data were furnished by EPD, and various Federal, State, and local sources; and stored in the GWUDS data base. Sources of data used to estimate water use are listed in table 1. EPD requires cities, industries, and other water users that withdraw more than 100,000 gallons per day (gal/d) to obtain withdrawal permits, and report monthly withdrawals. Withdrawals reported to EPD by permitted users comprise most of the data in this report.



Figure 1.--County location map of Georgia.

Table 1.-Sources of water-use data

[WRMP, Water Resources Management Program; EPD, Environmental Protection Division; <, less than]

Water-use category	Data sources	Type of data
Public supply	permit files, Water Resources Management Program (WRMP), Georgia Environmental Protection Division (EPD)	withdrawals by permitted users
	mail survey of operators of large municipal systems	population served, interconnection of systems
	mail survey operators of small municipal systems	population served, average use, metered/other
	Ground-Water Program, WRMP, EPD	population served, by small public suppliers (subdivisions and mobile home parks)
Domestic	U.S. Bureau of the Census	county and city populations
Commercial	permit files; WRMP; EPD	withdrawals by permitted users
	1986 inventory of small users (<100,000 gal/d) by Ground-Water and Surface-Water Programs; EPD	estimated water use
Industrial	permit files; WRMP; EPD	withdrawals by permitted users
Mining	permit files; WRMP; EPD survey of owners	withdrawals by permitted users, estimated water use
Livestock	Georgia Crop Reporting Service, Georgia Dept. of Agriculture, Cooperative Extension Service, U.S. Bureau of the Census	animal populations by county
Irrigation	Cooperative Extension Service, 1989 Irrigation Survey	crop acreage and inches applied by county
Thermoelectric power generation	permit files; WRMP; EPD	withdrawals by thermoelectric power plants
Hydroelectric power generation	power companies, plant owners	withdrawals by power plants instream use by hydroelectric facilities

Non-permitted water use is estimated by using various data sources and methods. Irrigation water-use estimates are calculated from data obtained from the University of Georgia, Cooperative Extension Service (CES) biannual irrigation survey (CES, written commun, Tifton, Ga., 1990). Water-use estimates for the domestic and livestock categories are calculated by using census populations and an estimate of per capita water-use. Data for instream water use by hydroelectric power plants were furnished by the respective plant managers.

Statewide surface- and ground-water withdrawals for public supply, domestic and commercial, industry and mining, irrigation, livestock, and thermoelectric are listed in table 2. Ground- and surface-water withdrawals by major standard industrial code (SIC) groups are listed in table 3. Withdrawals by major industrial users were tabulated statewide (table 3). Withdrawal estimates by major river basins (fig. 2) are listed in table 4, and the percent of ground water used, by category, for the principal aquifers in the State (fig. 3) are listed in table 5. Water use, by category, for each county are listed in table 6. Surface- and ground-water withdrawals by major municipal, county, private water system, and major industrial user for each county are listed in table 7 [at the end of this report]. Military bases, small industries, and small water suppliers (subdivisions, mobile home parks, and small towns) are not listed individually in table 7, but the withdrawal for each are included in the county totals.

For additional water-use data, please contact the U.S. Geological Survey, Georgia Water-Use Program, Atlanta, Ga.

WATER USE

In 1990, an estimated 5.3 billion gallons of water per day (Bgal/d) were withdrawn for offstream uses throughout Georgia. Offstream use is water withdrawn or diverted from a ground- or surface-water source, and transported to the place of use. The categories of offstream water use includes public supply, domestic, commercial, industrial, mining, irrigation, livestock, and thermoelectric power. Instream use is water use taking place within the stream channel for such purposes as hydroelectric power generation, navigation, water-quality improvement, fish

propagation, and recreation (Solley and others, 1988).

Hydroelectric power generation is the only instream use compiled for this report. An estimated 52 Bgal/d was used instream to generate hydroelectric power in 1990. Surface-water withdrawals accounted for 81 percent of total withdrawals, of which 70 percent was used for thermoelectric power generation. Ground-water withdrawals were largest for irrigation and industrial uses (table 2).

Water use is totalled for all withdrawals of ground- and surface-water in Georgia, by county (fig. 4). Most of the high-use areas, where withdrawals are 60 million gallons per day (Mgal/d) or greater, are in counties that have thermoelectric plants. DeKalb and Fulton Counties are exceptions where large amounts of water are withdrawn for public supply; and Glynn, Early, and Wayne Counties, where water is withdrawn for industrial supply.

Water-Use Categories

Water use is easier to understand if summarized by categories. Water-use categories discussed in this report include public supply, domestic and commercial, industrial and mining, agricultural (irrigation and livestock), and power generation.

Public Supply

The public-supply category includes water that is withdrawn by public and private water suppliers and delivered to various users. Small communities and subdivisions that furnish water to at least 25 people, or that have a minimum of 15 hookups (water connections), are considered public-supply systems. Public suppliers provide water for a variety of purposes, such as domestic, commercial, and industrial uses.

The EPD, Water Resources Management Program, provides data on the total amount of water withdrawn from ground- and surface-water sources, and these data are included in the GWUDS. A 1990 mail survey of the 74 largest public-water suppliers conducted by the Georgia Water Use Program provided data on the population served and the number of connections. The public suppliers surveyed in 1990 accounted

Table 2.--Georgia water-use totals, by category, 1990

[Mgal/d, million gallons per day]

Population: 6,478,260

Population served by public supply: 5,163,820

Acres irrigated: 1,182,720

Hydroelectric use (Mgal/d): 51,678

	Withdrawals, in million gallons per day						Totals
	Public supply	Domestic and commercial	Industry and mining	Irrigation	Livestock	Thermo-electric	
Ground water	233.64	129.72	354.76	262.70	9.85	5.18	995.85
Surface water	729.69	11.63	346.11	177.95	35.88	3,055.92	4,357.18
Totals	963.33	141.35	700.87	440.65	45.73	3,061.10	5,353.03

Table 3.--Industrial water use in Georgia, by major Standard Industrial Code (SIC) groups, 1990

[Mgal/d, million gallons per day; SIC, Standard Industrial Code]

SIC	Withdrawals, in millions of gallons per day	
	Ground water	Surface water
14 Mining	8.69	1.64
16 Construction	0.15	0.00
20 Food	15.97	0.27
22 Textiles	16.10	286.78
23 Apparel	0.17	0.00
24 Lumber	1.12	0.00
26 Paper	136.43	248.52
28 Chemicals	113.58	20.44
29 Petroleum	0.73	0.00
30 Rubber	0.55	0.00
31 Leather	0.00	0.16
32 Stone, clay	58.37	7.43
33 Primary metals	0.94	0.48
34 Metal products	0.42	0.00
35 Machinery, except electrical	1.00	0.00
36 Electrical machinery	0.20	0.00

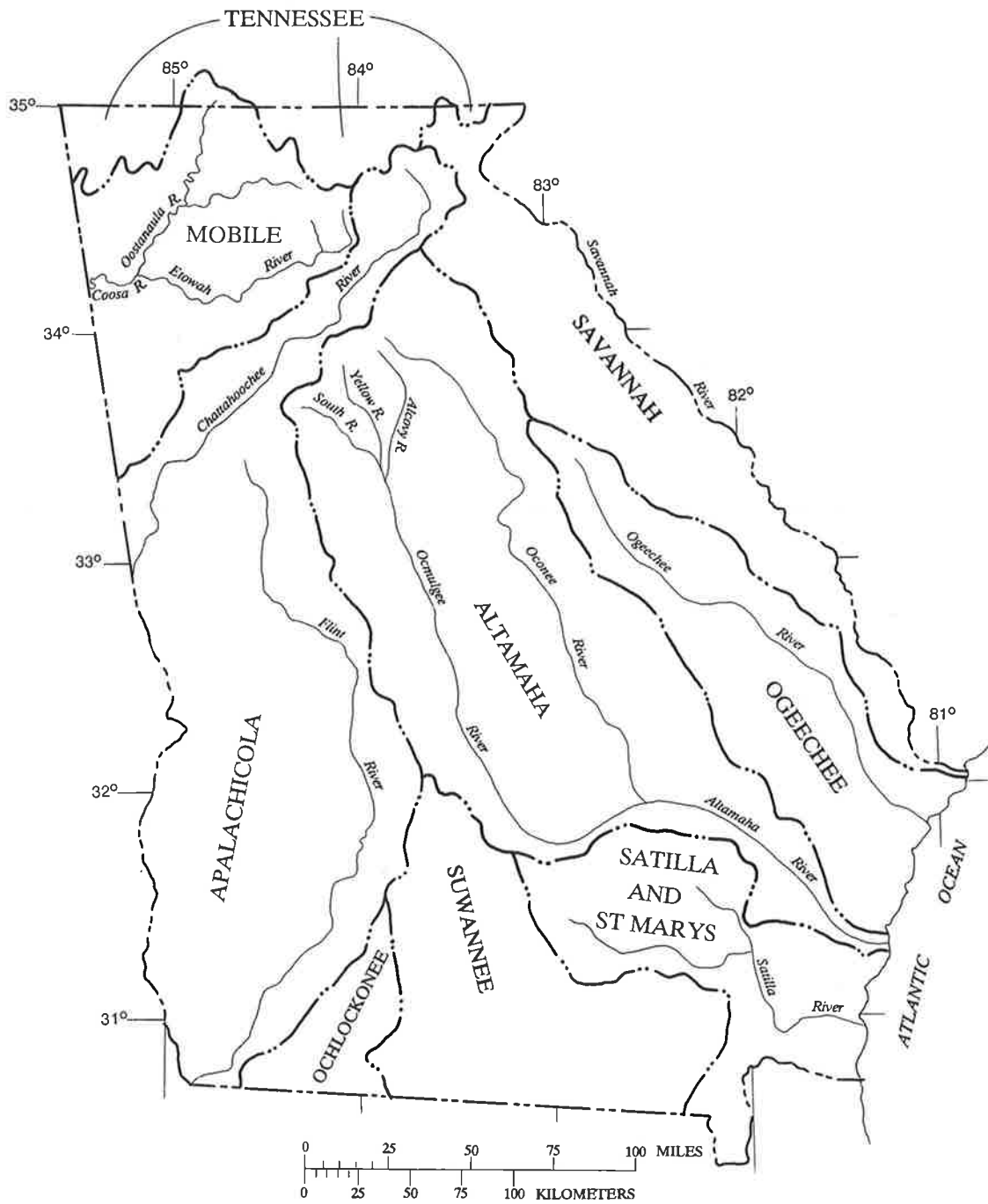


Figure 2.--Major river basins in Georgia.

EXPLANATION

AREA IN WHICH AQUIFER IS UTILIZED

COASTAL PLAIN AQUIFERS

- 1** Floridan aquifer system and upper and lower Brunswick aquifers, undifferentiated
- 2** Floridan aquifer system, Claiborne aquifer, Clayton aquifer, and Cretaceous aquifer
- 3** Floridan aquifer system and Cretaceous aquifer system
- 4** Claiborne aquifer, Clayton aquifer, and Cretaceous aquifer system
- 5** Cretaceous aquifer system

PIEDMONT AND BLUE RIDGE AQUIFERS

- 6** Crystalline-rock aquifers

VALLEY AND RIDGE AND APPALACHIAN PLATEAU AQUIFERS

- 7** Paleozoic rock aquifers

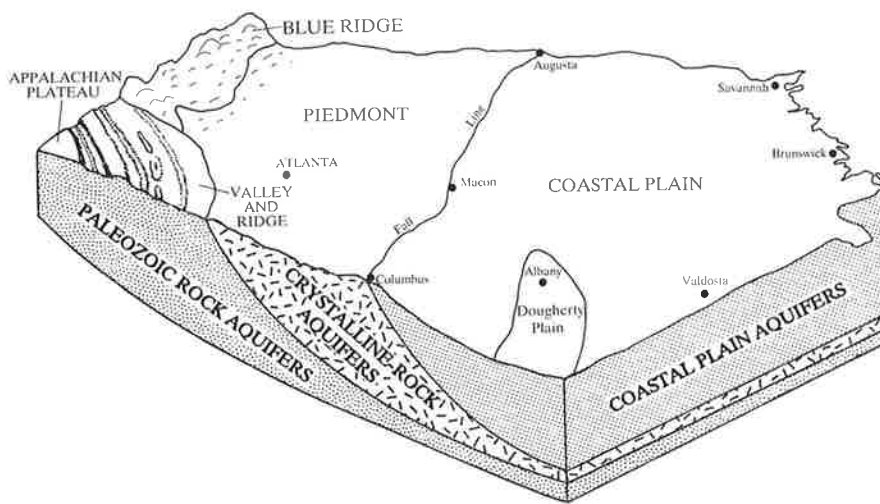
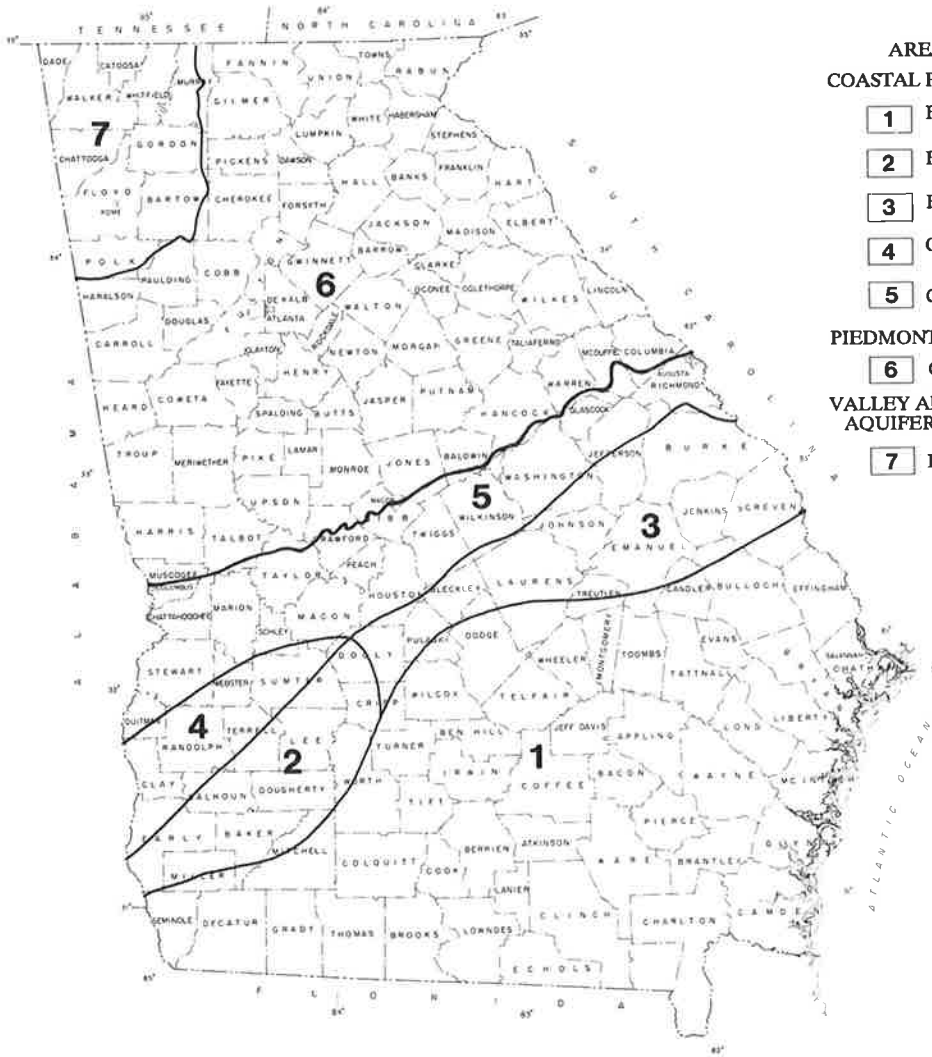


Figure 3.--Areas of utilization of major aquifers and block diagram showing major aquifers and physiographic provinces of Georgia. From Milby and others (1991).

Table 4.--Water use, by major river basins, 1990

Major river basin	Withdrawals, in million gallons per day						Totals
	Public supply	Domestic and commercial	Industry and mining	Livestock	Irrigation	Thermo-electric	
Savannah and Ogeechee	149.05	27.97	186.52	38.63	6.73	537.17	946.07
Altamaha, Satilla, and St Marys	274.86	45.77	293.81	90.02	14.91	1,182.03	1,901.40
Suwannee	28.91	10.45	14.87	88.45	1.92	0.00	144.60
Ochlockonee	6.74	1.88	1.85	25.89	0.67	0.00	37.03
Apalachicola	379.34	40.70	153.01	189.23	16.41	868.47	1,647.16
Mobile	114.90	11.62	44.21	7.57	4.25	473.43	655.98
Tennessee	9.53	2.96	6.60	0.86	0.84	0.00	20.79
Subtotals	963.33	141.35	700.87	440.65	45.73	3,061.10	5,353.03

Table 5.--Water use, by principal aquifers, 1990

[N/A, not applicable]

Aquifer name	Withdrawals, in percent					
	Public supply	Domestic and commercial	Industry and mining	Irrigation	Livestock	Thermo-electric
Floridan aquifer system	18	8	37	36	N/A	1
Clayton aquifer	32	5	1	62	N/A	0
Claiborne aquifer	31	6	4	58	N/A	1
Cretaceous aquifer system	25	9	52	14	N/A	0
Paleozoic aquifer	34	24	38	4	N/A	0
Crystalline rock aquifers	13	60	4	23	N/A	0

Table 6.--Water-use totals, by county, 1990

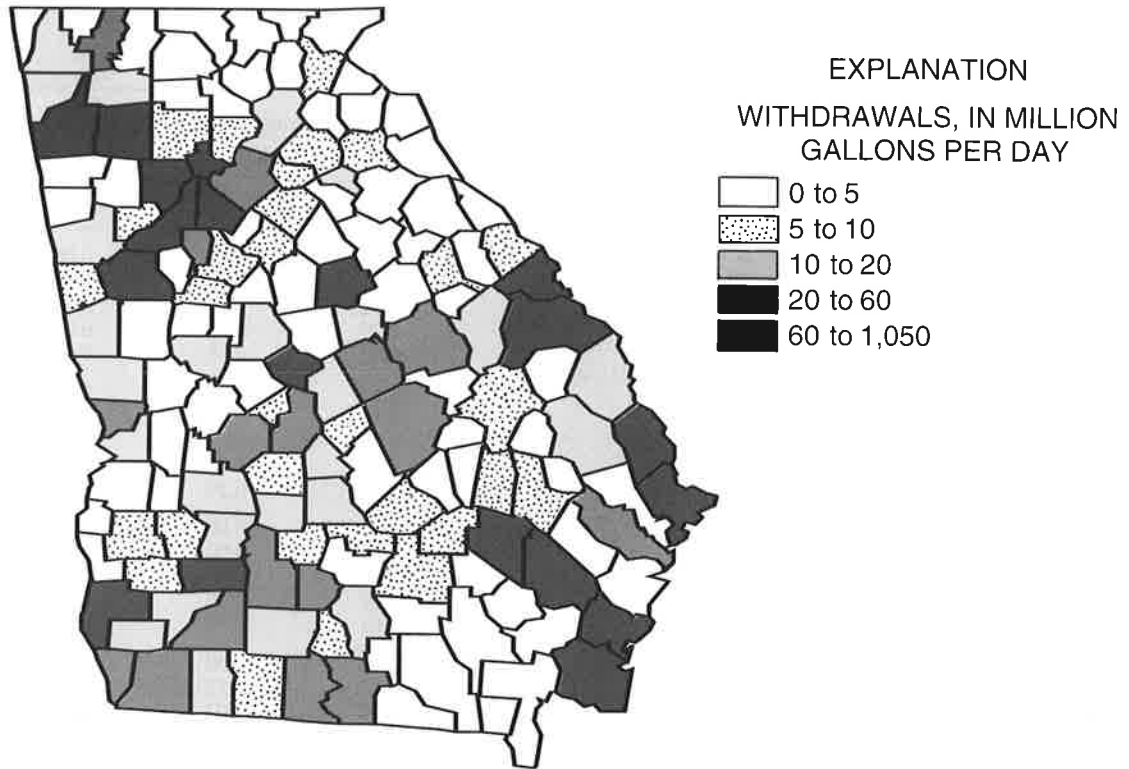
County	Withdrawals, in million gallons per day						Totals
	Public supply	Domestic and commercial	Industry and mining	Irrigation	Livestock	Thermo-electric	
Appling	0.51	0.74	0.31	1.75	0.21	57.06	60.58
Atkinson	0.16	0.21	0.00	1.37	0.37	0.00	2.11
Bacon	0.42	0.42	0.43	2.09	0.10	0.00	3.46
Baker	0.10	0.22	0.00	13.56	0.12	0.00	14.00
Baldwin	5.32	2.40	4.33	0.26	0.07	0.00	12.38
Banks	0.13	0.91	0.06	0.01	0.71	0.00	1.82
Barrow	3.31	0.94	0.10	0.04	0.84	0.00	5.23
Bartow	11.52	1.10	5.64	0.41	0.30	56.98	75.95
Ben Hill	1.20	0.45	0.00	4.02	0.10	0.00	5.77
Berrien	0.30	0.58	0.90	11.61	0.16	0.00	13.55
Bibb	24.80	0.12	16.12	0.25	0.20	34.96	76.45
Bleckley	0.97	0.40	0.00	5.00	0.09	0.00	6.46
Brantley	0.39	0.69	0.97	0.16	0.12	0.00	2.33
Brooks	1.27	0.68	0.00	23.93	0.28	0.00	26.16
Bryan	0.76	0.70	0.01	0.00	0.01	0.00	1.48
Bulloch	4.46	1.50	1.12	2.72	0.28	0.00	10.08
Burke	2.11	0.91	0.00	3.02	0.18	64.54	70.76
Butts	1.21	0.84	0.00	0.26	0.06	0.00	2.37
Calhoun	0.59	0.12	0.00	8.48	0.05	0.00	9.24
Camden	2.10	3.88	38.35	0.03	0.01	0.00	44.46
Candler	0.69	0.29	0.00	3.40	0.12	0.00	4.50
Carroll	9.15	2.28	0.15	0.38	0.53	0.00	12.49
Catoosa	3.30	0.88	0.00	0.62	0.17	0.00	4.97
Charlton	0.67	0.48	0.36	0.10	0.06	0.00	1.67
Chatham	64.75	3.56	79.84	2.55	0.04	365.38	516.12
Chattahoochee	6.99	6.64	0.00	0.00	0.00	0.00	13.63
Chattooga	3.24	0.84	7.63	0.02	0.13	0.00	11.86
Cherokee	5.83	0.90	0.39	0.69	0.51	0.00	8.32
Clarke	15.43	1.05	0.00	0.38	0.10	0.00	16.96
Clay	0.19	0.15	0.00	1.28	0.04	0.00	1.66
Clayton	21.41	0.01	0.00	0.08	0.04	0.00	21.54
Clinch	0.32	0.20	0.00	0.22	0.03	0.00	0.77
Cobb	75.15	0.68	1.23	2.70	0.05	319.76	399.57
Coffee	4.20	0.96	0.00	2.50	0.71	0.00	8.37
Colquitt	3.70	0.54	1.29	11.00	0.46	0.00	16.99
Columbia	8.59	1.06	0.00	0.02	0.05	0.00	9.72
Cook	2.87	0.49	0.00	3.19	0.07	0.00	6.62
Coweta	5.00	2.24	0.86	0.18	0.11	437.33	445.72
Crawford	0.15	0.79	0.00	0.51	1.88	0.00	3.33
Crisp	1.00	4.62	0.00	8.82	0.11	0.00	14.55
Dade	1.34	0.00	0.00	0.01	0.12	0.00	1.48
Dawson	0.23	0.60	0.00	0.02	0.21	0.00	1.06
Decatur	2.50	1.25	2.11	30.80	0.20	0.00	36.86
DeKalb	79.25	0.83	0.00	1.24	0.04	0.00	81.36
Dodge	0.86	0.77	0.00	2.85	0.18	0.00	4.66
Dooly	0.84	0.68	0.00	3.38	0.11	0.00	5.01
Dougherty	18.15	1.14	9.48	6.72	0.07	92.75	128.31
Douglas	5.68	0.13	0.00	0.68	0.04	0.00	6.53
Early	1.16	0.42	107.58	7.36	0.18	0.00	116.70
Echols	0.06	0.14	0.00	0.49	0.01	0.00	0.70
Effingham	1.02	1.19	11.46	0.48	0.06	107.25	121.46
Elbert	1.56	0.89	0.00	0.43	0.47	0.00	3.35
Emanuel	2.31	0.56	0.20	2.23	0.17	0.00	5.47
Evans	0.48	0.33	0.87	0.99	0.10	0.00	2.77
Fannin	0.82	0.50	0.00	0.00	0.11	0.00	1.43

Table 6.--Water-use totals, by county, 1990--Continued

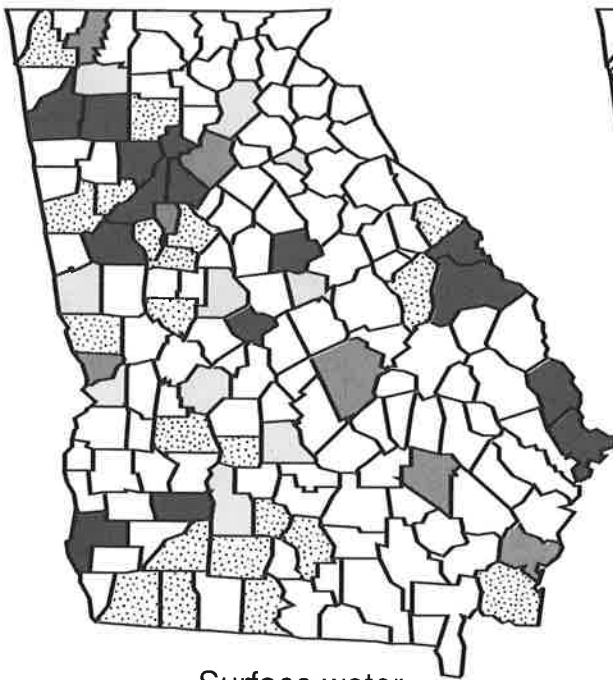
County	Withdrawals, in million gallons per day						Totals
	Public supply	Domestic and commercial	Industry and mining	Irrigation	Livestock	Thermo-electric	
Fayette	6.40	0.94	0.00	0.78	0.06	0.00	8.18
Floyd	12.15	0.83	28.24	3.73	0.18	416.45	461.58
Forsyth	4.62	2.16	0.00	0.19	0.64	0.00	7.61
Franklin	1.36	0.96	0.00	0.12	0.92	0.00	3.36
Fulton	137.51	5.01	0.02	0.94	0.09	0.00	143.57
Gilmer	1.95	0.49	0.00	0.03	0.48	0.00	2.95
Glascock	0.12	0.11	0.02	0.01	0.05	0.00	0.31
Glynn	13.40	2.94	92.44	2.99	0.02	32.77	144.56
Gordon	12.11	0.58	0.26	0.03	0.61	0.00	13.59
Grady	1.59	0.77	0.00	7.75	0.27	0.00	10.38
Greene	0.92	0.36	0.00	0.38	0.20	0.00	1.86
Gwinnett	61.14	0.00	0.00	0.77	0.15	0.00	62.06
Habersham	3.95	1.17	0.05	0.18	0.91	0.00	6.26
Hall	11.64	1.92	0.93	1.57	0.98	0.00	17.04
Hancock	0.42	0.40	0.01	0.18	0.06	0.00	1.07
Haralson	2.75	0.02	0.00	0.11	0.20	0.00	3.08
Harris	0.91	1.12	8.68	0.42	0.07	0.00	11.20
Hart	1.99	0.91	0.37	0.67	0.43	0.00	4.37
Heard	0.43	0.36	0.00	0.42	0.13	3.64	4.98
Henry	5.41	2.14	0.00	0.53	0.12	0.00	8.20
Houston	13.44	4.03	1.93	4.28	0.13	0.00	23.81
Irwin	0.69	0.35	0.01	2.65	0.19	0.00	3.89
Jackson	2.59	1.75	0.66	0.16	1.11	0.00	6.27
Jasper	0.39	0.43	0.90	0.04	0.25	0.00	1.92
Jeff Davis	1.00	0.52	0.72	4.47	0.10	0.00	6.81
Jefferson	1.86	0.64	8.97	6.94	0.18	0.00	18.59
Jenkins	0.58	0.32	0.11	2.96	0.15	0.00	4.12
Johnson	0.27	0.40	0.00	1.18	0.10	0.00	1.95
Jones	0.86	0.76	0.11	0.14	0.10	0.00	1.97
Lamar	1.52	0.57	0.00	0.24	1.20	0.00	3.53
Lanier	0.34	0.22	0.00	3.06	0.04	0.00	3.66
Laurens	4.06	1.10	13.30	7.32	0.25	0.00	26.03
Lee	0.66	0.80	0.95	15.07	0.11	0.00	17.59
Liberty	6.48	3.47	10.48	0.15	0.01	0.00	20.59
Lincoln	0.27	0.46	0.10	0.08	0.07	0.00	0.98
Long	0.22	0.23	0.00	0.04	0.04	0.00	0.53
Lowndes	8.39	4.22	11.58	1.86	0.12	0.00	26.17
Lumpkin	0.80	0.91	1.23	0.13	0.78	0.00	3.85
McDuffie	1.55	1.01	0.14	0.63	0.07	0.00	3.40
McIntosh	0.21	0.89	0.00	0.00	0.00	0.00	1.10
Macon	1.03	0.36	15.81	4.10	0.19	0.00	21.49
Madison	0.32	1.39	0.00	2.38	0.93	0.00	5.02
Marion	0.99	0.30	0.00	0.99	0.14	0.00	2.42
Meriwether	1.45	1.11	0.03	0.29	1.73	0.00	4.61
Miller	0.30	0.29	0.00	12.93	0.18	0.00	13.70
Mitchell	3.00	0.66	0.00	28.39	0.26	0.00	32.31
Monroe	1.24	0.98	0.00	0.17	4.33	10.63	17.35
Montgomery	0.33	0.32	0.00	0.99	0.07	0.00	1.71
Morgan	1.14	0.85	0.00	0.24	0.36	0.00	2.59
Murray	2.21	1.29	0.00	0.33	0.16	0.00	3.99
Muscogee	35.23	0.01	0.05	0.81	0.02	0.00	36.12
Newton	4.68	1.57	0.14	0.25	0.14	0.00	6.78
Oconee	1.09	0.50	0.00	0.16	0.46	0.00	2.21
Oglethorpe	0.22	0.60	0.00	0.11	0.44	0.00	1.37
Paulding	2.81	1.26	0.00	0.37	0.15	0.00	4.59

Table 6.--Water-use totals, by county, 1990--Continued

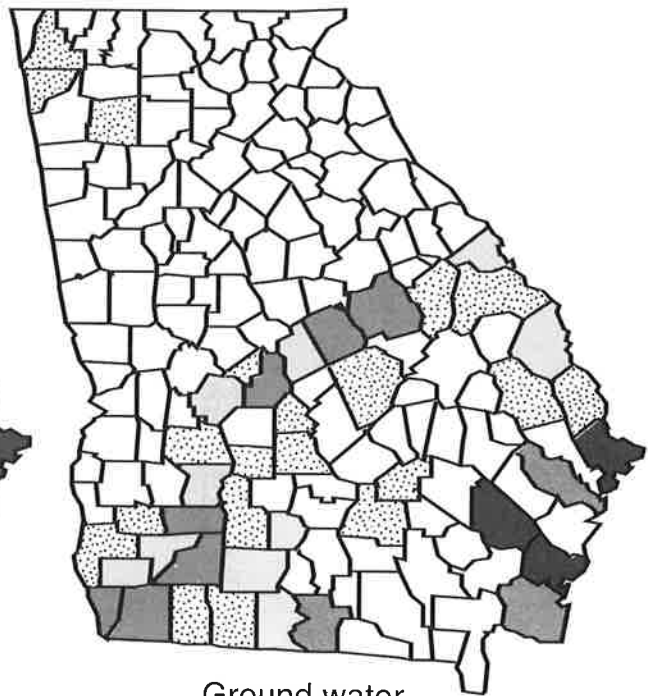
County	Withdrawals, in million gallons per day						Totals
	Public supply	Domestic and commercial	Industry and mining	Irrigation	Livestock	Thermo-electric	
Peach	2.40	0.68	0.00	3.85	0.04	0.00	6.97
Pickens	1.24	0.60	0.00	0.05	0.32	0.00	2.21
Pierce	0.54	0.65	0.52	2.12	0.12	0.00	3.95
Pike	0.50	0.60	0.00	0.29	0.30	0.00	1.69
Polk	1.42	0.54	1.90	0.03	0.13	0.00	4.02
Pulaski	0.68	0.23	0.00	11.03	0.07	0.00	12.01
Putnam	0.99	0.62	0.01	0.16	0.19	1,046.60	1,048.57
Quitman	0.13	0.08	0.00	0.15	0.01	0.00	0.37
Rabun	0.94	0.60	1.87	0.06	0.08	0.00	3.55
Randolph	0.76	0.27	0.00	6.39	0.10	0.00	7.52
Richmond	38.63	2.62	65.93	1.20	0.06	0.00	108.44
Rockdale	6.46	0.05	0.00	0.24	0.02	0.00	6.77
Schley	0.26	0.16	0.00	0.88	0.05	0.00	1.35
Screven	1.07	0.74	2.30	6.68	0.20	0.00	10.99
Seminole	0.58	0.61	0.00	23.01	0.10	0.00	24.30
Spalding	8.44	1.09	0.00	0.66	0.08	0.00	10.27
Stephens	4.13	0.31	0.00	0.11	0.22	0.00	4.77
Stewart	0.34	0.17	0.00	0.98	0.07	0.00	1.56
Sumter	4.17	0.87	0.00	8.51	0.23	0.00	13.78
Talbot	0.20	0.33	0.00	0.08	2.33	0.00	2.94
Taliaferro	0.06	0.14	0.00	0.00	0.04	0.00	0.24
Tattnall	1.05	1.72	0.00	2.44	0.23	0.00	5.44
Taylor	0.45	0.26	0.00	0.69	0.20	0.00	1.60
Telfair	1.72	0.26	0.05	3.40	0.14	0.00	5.57
Terrell	1.60	0.35	0.00	4.77	0.05	0.00	6.77
Thomas	5.23	0.61	0.35	0.29	0.19	0.00	6.67
Tift	6.20	0.16	0.00	15.67	0.18	0.00	22.21
Toombs	2.50	0.56	0.00	2.96	0.14	0.00	6.16
Towns	0.37	0.29	0.00	0.00	0.07	0.00	0.73
Treutlen	0.43	0.44	0.00	0.07	0.04	0.00	0.98
Troup	10.86	1.05	1.05	0.20	0.11	0.00	13.27
Turner	0.74	0.22	1.08	5.53	0.16	0.00	7.73
Twiggs	0.26	0.59	17.88	0.05	0.04	0.00	18.82
Union	0.53	0.46	0.00	0.02	0.12	0.00	1.13
Upton	2.14	0.76	2.80	0.21	4.18	0.00	10.09
Walker	6.67	1.34	4.80	0.12	0.32	0.00	13.25
Walton	3.95	1.38	0.00	0.15	0.22	0.00	5.70
Ware	4.65	0.80	0.41	0.84	0.12	0.00	6.82
Warren	0.33	0.22	4.65	0.06	0.10	0.00	5.36
Washington	1.84	0.75	16.83	2.80	0.13	0.00	22.35
Wayne	2.44	0.81	65.95	0.85	0.07	0.00	70.12
Webster	0.10	0.12	0.00	2.41	0.04	0.00	2.67
Wheeler	0.27	0.17	0.00	1.72	0.08	0.00	2.24
White	0.87	0.73	1.64	0.05	0.44	0.00	3.73
Whitefield	35.72	0.10	0.00	0.62	0.22	0.00	36.71
Wilcox	0.62	0.26	0.00	16.66	0.12	0.00	17.66
Wilkes	2.45	0.22	0.00	0.04	0.29	0.00	3.00
Wilkinson	0.93	0.30	20.82	0.42	0.04	0.00	22.51
Worth	0.91	0.92	0.00	10.13	0.24	15.00	27.20
Totals	963.33	141.35	700.87	440.65	45.73	3,061.10	5,353.03



All sources of water



Surface water



Ground water

Figure 4.--Water withdrawals, by county, 1990.

for 85 percent of the total public supply in the State. The 1987 withdrawal data for small, non-permitted systems were obtained from a 1988 mail survey by the GWUP. Self-supplied public water suppliers (those water users who withdraw their own water) were contacted for information on water-use estimates as a one-time effort by GWUP, and the information is used in both the 1987 water-use report (Trent and others, 1990) and this report.

Total public-supply water use was estimated at 963.33 Mgal/d in 1990. Surface-water use accounted for about 76 percent, and ground water accounted for about 24 percent. The largest public suppliers are in northern Georgia, where population is greatest.

Domestic and Commercial

Domestic use is defined as water used for household purposes, such as drinking, food preparation, bathing, washing clothes and dishes, flushing toilets, car washing, and watering lawns and gardens. The number of self-supplied, domestic water users was estimated by subtracting estimates of the number of persons served by public systems from population, by county (U.S. Bureau of the Census, 1990). An unpublished 1983 survey conducted by the GWUP of subdivisions in the Athens area, indicate that on the average, each person uses 75 gallons of water per day (gal/d). The estimate of 75 gal/d per person was multiplied by the self-supplied population to obtain the total self-supplied domestic water use in 1990 of 99.51 Mgal/d. Small towns that lack public-supply systems are considered to have 100-percent domestic use. Self-supplied households in Georgia are assumed to use ground water only (from wells and springs).

Commercial users include restaurants, hotels, retail stores, and other businesses; government and military facilities; prisons, schools, hospitals, and other institutions; and recreational facilities. Because only a few commercial users withdraw enough water to require permits from EPD, the reporting of actual commercial use is limited. EPD provided a list of commercial users that produced their own water supply in 1986, and an estimate of commercial withdrawals in 1983. These data were compared, and commercial use was estimated to be 41.84 Mgal/d in 1990.

Self-Supplied Industry and Mining

Industrial water use is water used for industrial purposes, such as fabrication, processing, washing, and cooling. The largest industrial water users in Georgia are paper mills that are concentrated along the coast. Other major users are the textile industries (which may account for the heavy use in northwest Georgia), chemical manufacturers, and the mining and mineral industries. The Standard Industrial Classification (SIC) codes of the major industrial users listed in the tables are described in the appendix.

Self-supplied industries in Georgia withdrew approximately 700.87 Mgal/d of water in 1990, a slight increase from the 684 Mgal/d withdrawn in 1987. As reported in previous years, nearly all the estimated industrial use was compiled from reported (permitted) withdrawals to EPD for 1990.

Mining water use is defined as water used for the extraction of minerals that occur naturally. Granite, clay, marble, and other materials are mined extensively in the State, but the operations do not require large quantities of water. The mining withdrawal data were obtained from the EPD permit files, reports by mining companies, and estimates based on average water requirements for each ton mined. Mining withdrawals in the State are for dewatering or well-operation purposes only, and were estimated to have been 11.56 Mgal/d in 1990.

Agricultural

Estimates of agricultural use includes withdrawals for irrigation and non-irrigation purposes. Water withdrawn for crops, large nurseries, athletic fields, and golf courses is included in the irrigation category. Non-irrigation use, or livestock use, is the water withdrawn for poultry, horses, livestock, and catfish farms.

Estimates of irrigation use are based on a 1989 irrigation survey conducted by the University of Georgia, Cooperative Extension Service (CES, written commun., Tifton, Ga., 1990). The data, supplied by county agents, include crop acreage and inches of water applied by crop for each county in the State. The irrigation survey also estimated

water-source data used to estimate percentages of ground- and surface-water use. The 1989 irrigation survey was the most complete source of data available, and was used to estimate irrigation use for 1990. Some counties experienced major changes in acreage and water use, but these changes are attributed to more intense data collection by county agents. Other factors affecting changes include drought conditions; and possibly, double and triple cropping.

In counties where irrigation is used predominantly for golf courses and athletic fields, water use per acre tends to be high (about 2,000 gal/d per acre). The irrigation estimates are annual averages, but irrigation use during the growing season may be considerably higher.

From 1982 to 1987, Georgia law required owners of any irrigation system(s) that used more than 3 million gallons per month to report irrigation water use to EPD, and the data were maintained in a computer data base as part of the Georgia Water-Use Program (Georgia Irrigation Reporting System), which was the only source of annual site-specific water-use data available for irrigation systems. In 1988, however, the Georgia Legislature enacted a permitting law for all irrigation systems in the State. To date (1992), these data are incomplete and insufficient for calculating statewide irrigation water-use estimates.

In 1987, irrigation withdrawals were about 728 Mgal/d (table 2), a 37-percent increase from 1985. The 1990 estimate of 440.65 Mgal/d represents a decrease of 39 percent in water withdrawals since 1987, and a slight increase in acreage. Irrigation use now accounts for more than half of the consumptive water use in the State. Most irrigation occurs in the Coastal Plain physiographic province, and is especially prevalent in the southwestern part of the State where irrigation comprises more than 95 percent of the total water use in some counties.

Estimates of water withdrawal for livestock were compiled by animal types, (cattle, pigs and hogs, horses, and several kinds of poultry); and catfish farming. Water-use estimates were calculated by multiplying animal populations in each county by the average water requirement for each animal type. The water sources for livestock use are not known; therefore, the proportions of ground- and surface-water withdrawals were estimated from other use categories for each

county. The 1990 estimates for horses and catfish farms were determined using data obtained from surveys made in 1970 and 1984, respectively (Pullin, 1970 and Lewis, 1984).

Power Generation

Thermoelectric power water use is water withdrawn for cooling purposes at thermoelectric power plants. The thermoelectric power category includes withdrawal by all self-supplied fossil fuel and nuclear facilities. The GWUDS data base includes 17 thermoelectric plants that operate on oil, coal, or natural gas, and two nuclear plants. The EPD Water Resources Management Program collects data on the amounts of water treated for potable use and boiler make-up. Information concerning these water withdrawal quantities was obtained directly from plant operators. Power generation data were provided by the monthly power-plant report by the U.S. Department of Energy.

Hydroelectric power water use is water used instream for the generation of electricity. A survey of hydroelectric plant owners, conducted by the GWUP, provided the number of gallons used by each plant to generate one megawatt-hour of electricity. Then, monthly power generation was used to estimate the amount of monthly water-use. The Westinghouse Hanford Laboratories report on hydroelectric power (Westinghouse Hanford Company, 1988) was used to evaluate the accuracy of the data.

Power generation is the largest water-use category in the State. Withdrawals consist of 3,061 Mgal/d for thermoelectric; and 51,678 Mgal/d for instream hydroelectric power generation (table 2). The percentage of water consumed ranges from about 0 percent for the hydroelectric plants to about 100 percent for some thermoelectric plants. About 4 percent of all water withdrawn for power generation is consumed, and not returned to the source.

SUMMARY

Water-use data in Georgia for 1990 was compiled by the Georgia Water-Use Program, a cooperative effort between the U.S. Geological Survey and the Georgia Geologic Survey. The data were compiled by county, major river basins, and principal aquifers. The categories of water use

included in this report are public supply, domestic, commercial, industry, mining, irrigation, livestock, and thermoelectric and hydroelectric power.

In 1990, total offstream water use from ground- and surface-water sources was estimated at 5.3 billions gallons per day (Bgal/d); 19 percent of which was ground water, and 81 percent was surface water. An estimated 52 Bgal/d was used instream to generate hydroelectric power. Offstream water use varies by category; however, thermoelectric power is the largest water user in the State. Excluding the thermoelectric power category, withdrawals for public supply were the largest, followed by industry and mining, agriculture (irrigation and livestock), and domestic and commercial.

Public-supply withdrawals were estimated to be 963.33 million gallons per day (Mgal/d) in 1990, of which 76 percent was from surface-water sources and 24 percent from ground-water sources. Withdrawals for domestic use were considered to be from ground-water sources (wells and springs) and estimated to be 99.51 Mgal/d in 1990. Commercial use was estimated to be 41.84 Mgal/d. Water use for self-supplied industry was 700.87 Mgal/d and mining was 11.56 Mgal/d. Irrigation water use, nearly 60 percent from ground water, was estimated to be 440.65 Mgal/d; livestock withdrawals were mostly from surface-water sources (45.73 Mgal/d). Thermoelectric power withdrawals (3,061.10 Mgal/d) represents 57 percent of total offstream withdrawals in 1990. Water used instream for hydroelectric power generation were estimated at 51,678 Mgal/d.

SELECTED REFERENCES

- Carter, R.F., and Johnson, A.M.F., 1974, Use of water in Georgia, 1970, with projections to 1990: Georgia Geologic Survey Hydrologic Report 2, 74 p.
- Carter, R.F. and Stiles, H.R., 1983, Average annual rainfall and runoff in Georgia, 1941-70: Georgia Geologic Survey, Hydrologic Atlas 9.
- Executive Office of the President, Office of Management and Budget, 1987, Standard Industrial Classification Manual 1987: National Technical Information Service, Springfield, Va., PB 87-100012, 649 p.
- Fanning, J.L., 1985, The Georgia water-use program: U.S. Geological Survey Open-File Report 85-481, pamphlet.
- Georgia Department of Agriculture, 1980, Georgia agricultural facts 1978-1979: Georgia Department of Agriculture, Crop Reporting Service, 98 p.
- Lewis, George, 1984, Catfish farming in Georgia: Athens, Ga., University of Georgia, Cooperative Extension Service.
- Milby, B.J., Joiner, C.N., Cressler, A.M., and West, C.T., 1991, Ground-water conditions in Georgia, 1990: U.S. Geological Survey Open-File Report 91-486, 147 p.
- Murray, C.R., and Reeves, E.B., 1977, Estimated use of water in the United States in 1975: U.S. Geological Survey Circular 765, 39 p.
- Pierce, R.R., and Barber, N.L., 1982, Water use in Georgia 1980--a summary report: Georgia Geologic Survey Circular 4-A, 17 p.
- Pierce, R.R., Barber, N.L., and Stiles, H.R., 1982, Water use in Georgia by county for 1980: Georgia Geologic Survey Information Circular 59, 180 p.
- Pullin, Debra, 1970, Horse and pony survey: Atlanta, Ga., Georgia Department of Agriculture, 9 p.
- Solley, W.B., Chase, E.B., and Mann, W.B., 1983, Estimated use of water in the United States in 1980: U.S. Geological Survey Circular 1001, 56 p.
- Solley, W.B., Merk, C.F., and Pierce, R.R., 1988, Estimated use of water in the United States in 1985: U.S. Geological Survey Circular 1004, 82 p.
- Steele, W.M., and O'Connor, B.J., 1986, Mining directory of Georgia, 19th ed.: Georgia Geologic Survey Circular 2, 54 p.
- Strong, C.F., and Wildey, H.E., 1990, A summary of the 1989 poultry survey by Georgia county agents: Athens, Ga., University of Georgia, Cooperative Extension Service, 34 p.

Trent, V.P., Fanning, J.L., and Doonan, G.A., 1990, Water use in Georgia by county for 1987: Georgia Geologic Survey Information Circular 85, 112 p.

Turlington, M.C., Fanning, J.L., and Doonan, G.A., 1987, Water use in Georgia by county for 1985: Georgia Geologic Survey Information Circular 81, 110 p.

U.S. Department of Energy, 1988, Estimated water use of power plants--Georgia: Westinghouse-Hanford Company, Hanford Engineering Development Laboratory, Richland, Wash., Contract DE-AC06-76FF02170, B and R 40-04-00-0, 36 p.

APPENDIX

Standard Industrial Classification (SIC) Codes

Definitions of SIC Codes

Industrial water use is given by industry type and classified by Standard Industrial Classification (SIC) Code. A brief description of the codes used in this publication is given below.

14--MINING AND QUARRYING OF NONMETALLIC MINERALS, EXCEPT FUELS

This major group includes establishments engaged in mining or quarrying, developing mines, or exploring for nonmetallic minerals, except fuels. Also included are certain well and brine operations, and primary preparation plants, such as those engaged in crushing, grinding, washing, or other concentration.

16--CONSTRUCTION OTHER THAN BUILDING CONSTRUCTION-- GENERAL CONTRACTORS

This major group includes general contractors engaged in heavy construction (including new work, additions, improvements, maintenance, and repair) such as highways and streets, bridges, sewers, railroads, irrigation projects, flood control projects and marine construction, and miscellaneous types of construction work other than buildings.

20--FOOD AND KINDRED PRODUCTS

This major group includes establishments manufacturing or processing foods and beverages for human consumption, and certain related products, such as manufactured ice, chewing gum, vegetable and animal fats and oils, and prepared feeds for animals and fowls.

22--TEXTILE MILL PRODUCTS

This major group includes establishments engaged in performing any of the following operations: (1) preparation of fiber and subsequent manufacturing of yarn, thread, braids, twine, and cordage; (2) manufacturing broad woven fabric, narrow woven fabric, knit fabric and carpets and rugs from yarn; (3) dyeing and finishing fiber, yarn, fabric, and knit apparel; (4) coating, waterproofing, or otherwise treating fabric; (5) the integrated manufacture of knit apparel and other finished articles from yarn; and (6) the manufacture of felt goods, lace goods, nonwoven fabrics and miscellaneous textiles.

23--APPAREL AND OTHER FINISHED PRODUCTS MADE FROM FABRICS AND SIMILAR MATERIALS

This major group, known as the cutting-up and needle trades, includes establishments producing clothing and fabricating products by cutting and sewing purchased woven or knit textile fabrics and related materials such as leather, rubberized fabrics, plastics, and furs.

24--LUMBER AND WOOD PRODUCTS, EXCEPT FURNITURE

This major group includes logging camps engaged in cutting timber and pulpwood; merchant sawmills, lathe mills, shingle mills, cooperage stock mills, planing mills, and pulpwood mills and veneer mills engaged in producing lumber and wood basic materials; and establishments engaged in manufacturing finished articles made entirely or mainly of wood or wood substitutes.

26--PAPER AND ALLIED PRODUCTS

This major group includes the manufacture of pulps from wood and other cellulose fibers, and from rags; the manufacture of paper and paperboard; and the manufacture of paper and paperboard into converted products such as paper coated off the paper machine, paper bags, paper boxes, and envelopes.

28--CHEMICALS AND ALLIED PRODUCTS

This major group includes establishments producing basic chemicals, and establishments manufacturing products by predominantly chemical processes. Establishments classified in this major group manufacture three general classes of products: (1) basic chemicals such as acids, alkalis, salts, and organic chemicals; (2) chemical products to be used in further manufacture such as synthetic fibers, plastics materials, dry colors, and pigments; and (3) finished chemical products to be used for ultimate consumption such as drugs, cosmetics, and soaps, or to be used as materials or supplies in other industries, such as paints, fertilizers, and explosives.

29--PETROLEUM REFINING AND RELATED INDUSTRIES

This major group includes establishments primarily engaged in petroleum refining, manufacturing paving and roofing materials, and compounding lubricating oils and greases from purchased materials.

30--RUBBER AND MISCELLANEOUS PLASTICS PRODUCTS

This major group includes establishments manufacturing from natural, synthetic, or reclaimed rubber, gutta percha, balata, or gutta siak, rubber products such as tires, rubber footwear, mechanical rubber goods, heels and soles, flooring, and rubber sundries.

31--LEATHER AND LEATHER PRODUCTS

This major group includes establishments engaged in tanning, currying, and finishing hides and skins, and establishments manufacturing finished leather and artificial leather products and some similar products made of other materials.

32--STONE, CLAY, GLASS, AND CONCRETE PRODUCTS

This major group includes establishments engaged in manufacturing flat glass and other glass products, such as cement, structural clay products, pottery, concrete and gypsum products, cut stone, abrasive and asbestos products, from materials taken principally from the earth in the form of stone, clay, and sand.

33--PRIMARY METAL INDUSTRIES

This major group includes establishments engaged in the smelting and refining of ferrous and nonferrous metals from ore, pig, or scrap; in the rolling, drawing, and alloying of ferrous and nonferrous metals; in the manufacture of castings and other basic products of ferrous and nonferrous metals; and in the manufacture of nails, spikes, and insulated wire and cable.

34--FABRICATED METAL PRODUCTS, EXCEPT MACHINERY AND TRANSPORTATION EQUIPMENT

This major group includes establishments engaged in fabricating ferrous and nonferrous metal products such as metal cans, tinware, hand tools, cutlery, general hardware, nonelectric heating apparatus, fabricated structural metal products, metal forging, metal stamping, ordinance (except vehicles and guided missiles), and a variety of metal and wire products not elsewhere classified.

35--MACHINERY, EXCEPT ELECTRICAL

This major group includes establishments engaged in manufacturing machinery and equipment, other than electrical equipment (Major Group 36) and transportation equipment (Major Group 37).

36--ELECTRICAL AND ELECTRONIC MACHINERY, EQUIPMENT, AND SUPPLIES

This major group includes establishments engaged in manufacturing machinery, apparatus, and supplies for the generation, storage, transmission, transformation, and utilization of electrical energy.

Table 7.--Ground- and surface-water use, by county, 1990

NOTE:

The following tables show ground- and surface-water withdrawals by water-use category. Also, listed are:

- major public suppliers,
- major industrial groups,
- county population,
- population served by public supply,
- acres irrigated.

APPLING COUNTY

Population: 15,744
 Population served by public supply: 5,995
 Acres irrigated: 3,960
 Hydroelectric use (Mgal/d): 0



WITHDRAWALS, IN MILLION GALLONS PER DAY							
	Public Supply	Domestic & Commercial	Industry & Mining	Irrigation	Livestock	Thermo-electric	TOTALS
Ground Water	0.51	0.74	0.31	0.44	0.01	0.23	2.24
Surface Water	0.00	0.00	0.00	1.31	0.20	56.83	58.34
TOTALS	0.51	0.74	0.31	1.75	0.21	57.06	60.58

Withdrawals by Major Public Suppliers (Mgal/d):

	GW	SW
City of Baxley	0.44	0.00
Town of Surrency	0.04	0.00

Withdrawals by Major Industrial Groups (Mgal/d):

	GW	SW
SIC 24 Lumber	0.31	0.00

ATKINSON COUNTY

Population: 6,213
 Population served by public supply: 3,485
 Acres irrigated: 5,623
 Hydroelectric use (Mgal/d): 0



WITHDRAWALS, IN MILLION GALLONS PER DAY							
	Public Supply	Domestic & Commercial	Industry & Mining	Irrigation	Livestock	Thermo-electric	TOTALS
Ground Water	0.16	0.21	0.00	0.30	0.01	0.00	0.68
Surface Water	0.00	0.00	0.00	1.07	0.36	0.00	1.43
TOTALS	0.16	0.21	0.00	1.37	0.37	0.00	2.11

Withdrawals by Major Public Suppliers (Mgal/d):

	GW	SW
City of Pearson	0.05	0.00
Town of Willacoochee	0.10	0.00

Withdrawals by Major Industrial Groups (Mgal/d):

	GW	SW
SIC None		

BACON COUNTY

Population: 9,566
 Population served by public supply: 3,981
 Acres irrigated: 5,156
 Hydroelectric use (Mgal/d): 0



WITHDRAWALS, IN MILLION GALLONS PER DAY							
	Public Supply	Domestic & Commercial	Industry & Mining	Irrigation	Livestock	Thermo-electric	TOTALS
Ground Water	0.42	0.42	0.43	1.00	0.01	0.00	2.28
Surface Water	0.00	0.00	0.00	1.09	0.09	0.00	1.18
TOTALS	0.42	0.42	0.43	2.09	0.10	0.00	3.46

Withdrawals by Major Public Suppliers (Mgal/d):

	GW	SW
City of Alma	0.41	0.00

Withdrawals by Major Industrial Groups (Mgal/d):

SIC	GW	SW
22 Textiles	0.43	0.00

BAKER COUNTY

Population: 3,615
 Population served by public supply: 695
 Acres irrigated: 39,610
 Hydroelectric use (Mgal/d): 0



WITHDRAWALS, IN MILLION GALLONS PER DAY							
	Public Supply	Domestic & Commercial	Industry & Mining	Irrigation	Livestock	Thermo-electric	TOTALS
Ground Water	0.10	0.22	0.00	11.69	0.09	0.00	12.10
Surface Water	0.00	0.00	0.00	1.87	0.03	0.00	1.90
TOTALS	0.10	0.22	0.00	13.56	0.12	0.00	14.00

Withdrawals by Major Public Suppliers (Mgal/d):

	GW	SW
City of Newton	0.10	0.00

Withdrawals by Major Industrial Groups (Mgal/d):

SIC	GW	SW
None		

BALDWIN COUNTY

Population: 39,530
 Population served by public supply: 25,429
 Acres irrigated: 140
 Hydroelectric use (Mgal/d): 1,338



WITHDRAWALS, IN MILLION GALLONS PER DAY							
	Public Supply	Domestic & Commercial	Industry & Mining	Irrigation	Livestock	Thermo-electric	TOTALS
Ground Water	0.03	1.06	0.00	0.00	0.00	0.00	1.09
Surface Water	5.29	1.34	4.33	0.26	0.07	0.00	11.29
TOTALS	5.32	2.40	4.33	0.26	0.07	0.00	12.38

Withdrawals by Major Public Suppliers (Mgal/d):

	GW	SW
City of Milledgeville	0.00	4.74

Withdrawals by Major Industrial Groups (Mgal/d):

	SIC	GW	SW
22 Textiles		0.00	4.32

BANKS COUNTY

Population: 10,308
 Population served by public supply: 1,393
 Acres irrigated: 26
 Hydroelectric use (Mgal/d): 0



WITHDRAWALS, IN MILLION GALLONS PER DAY							
	Public Supply	Domestic & Commercial	Industry & Mining	Irrigation	Livestock	Thermo-electric	TOTALS
Ground Water	0.13	0.67	0.06	0.00	0.00	0.00	0.86
Surface Water	0.00	0.24	0.00	0.01	0.71	0.00	0.96
TOTALS	0.13	0.91	0.06	0.01	0.71	0.00	1.82

Withdrawals by Major Public Suppliers (Mgal/d):

	GW	SW
Town of Homer	0.04	0.00
Town of Maysville	0.07	0.00

Withdrawals by Major Industrial Groups (Mgal/d):

	SIC	GW	SW
23 Apparel		0.06	0.00

BARROW COUNTY

Population: 29,721
 Population served by public supply: 17,190
 Acres irrigated: 80
 Hydroelectric use (Mgal/d): 0



WITHDRAWALS, IN MILLION GALLONS PER DAY							
	Public Supply	Domestic & Commercial	Industry & Mining	Irrigation	Livestock	Thermo-electric	TOTALS
Ground Water	0.09	0.94	0.10	0.02	0.00	0.00	1.15
Surface Water	3.22	0.00	0.00	0.02	0.84	0.00	4.08
TOTALS	3.31	0.94	0.10	0.04	0.84	0.00	5.23

Withdrawals by Major Public Suppliers (Mgal/d):

	GW	SW
Town of Auburn	0.06	0.00
City of Statham	0.00	0.04
City of Winder	0.00	3.17

Withdrawals by Major Industrial Groups (Mgal/d):

SIC	GW	SW
20 Food	0.10	0.00

BARTOW COUNTY

Population: 55,911
 Population served by public supply: 42,242
 Acres irrigated: 659
 Hydroelectric use (Mgal/d): 1,386



WITHDRAWALS, IN MILLION GALLONS PER DAY							
	Public Supply	Domestic & Commercial	Industry & Mining	Irrigation	Livestock	Thermo-electric	TOTALS
Ground Water	1.24	1.10	2.91	0.27	0.01	0.00	5.53
Surface Water	10.28	0.00	2.73	0.14	0.29	56.98	70.42
TOTALS	11.52	1.10	5.64	0.41	0.30	56.98	75.95

Withdrawals by Major Public Suppliers (Mgal/d):

	GW	SW
City of Adairsville	0.18	0.00
Bartow County Water System	0.00	0.27
City of Cartersville	0.00	7.43
City of Emerson	0.00	0.30
City of Kingston	0.92	0.00
Town of White	0.11	0.00

Withdrawals by Major Industrial Groups (Mgal/d):

SIC	GW	SW
22 Textiles	0.56	0.00
26 Paper	0.20	0.00
28 Chemicals	1.25	2.40
32 Stone, Clay	0.90	0.00
33 Primary Metals	0.15	0.33

BEN HILL COUNTY

Population: 16,245
 Population served by public supply: 10,225
 Acres irrigated: 12,567
 Hydroelectric use (Mgal/d): 0



WITHDRAWALS IN MILLION GALLONS PER DAY							
	Public Supply	Domestic & Commercial	Industry & Mining	Irrigation	Livestock	Thermo-electric	TOTALS
Ground Water	1.20	0.45	0.00	2.17	0.02	0.00	3.84
Surface Water	0.00	0.00	0.00	1.85	0.08	0.00	1.93
TOTALS	1.20	0.45	0.00	4.02	0.10	0.00	5.77

Withdrawals by Major Public Suppliers (Mgal/d):

	GW	SW
City of Fitzgerald	1.18	0.00

Withdrawals by Major Industrial Groups (Mgal/d):

SIC	GW	SW
None		

BERRIEN COUNTY

Population: 14,153
 Population served by public supply: 6,519
 Acres irrigated: 28,840
 Hydroelectric use (Mgal/d): 0



WITHDRAWALS IN MILLION GALLONS PER DAY							
	Public Supply	Domestic & Commercial	Industry & Mining	Irrigation	Livestock	Thermo-electric	TOTALS
Ground Water	0.30	0.58	0.90	2.86	0.03	0.00	4.67
Surface Water	0.00	0.00	0.00	8.75	0.13	0.00	8.88
TOTALS	0.30	0.58	0.90	11.61	0.16	0.00	13.55

Withdrawals by Major Public Suppliers (Mgal/d):

	GW	SW
Town of Alapaha	0.02	0.00
Town of Enigma	0.03	0.00
City of Nashville	0.20	0.00
City of Ray City	0.05	0.00

Withdrawals by Major Industrial Groups (Mgal/d):

SIC	GW	SW
22 Textiles	0.90	0.00

BIBB COUNTY

Population: 149,967
 Population served by public supply: 148,467
 Acres irrigated: 156
 Hydroelectric use (Mgal/d): 0



WITHDRAWALS IN MILLION GALLONS PER DAY							
	Public Supply	Domestic & Commercial	Industry & Mining	Irrigation	Livestock	Thermo-electric	TOTALS
Ground Water	0.50	0.12	2.67	0.22	0.08	0.00	3.59
Surface Water	24.30	0.00	13.45	0.03	0.12	34.96	72.86
TOTALS	24.80	0.12	16.12	0.25	0.20	34.96	76.45

Withdrawals by Major Public Suppliers (Mgal/d):

	GW	SW
Macon-Bibb County Water & Sewer	0.00	24.30

Withdrawals by Major Industrial Groups (Mgal/d):

SIC	GW	SW
20 Food	0.29	0.00
22 Textiles	0.00	1.93
26 Paper	0.88	11.52
32 Stone, Clay	1.49	0.00

BLECKLEY COUNTY

Population: 10,430
 Population served by public supply: 6,060
 Acres irrigated: 14,102
 Hydroelectric use (Mgal/d): 0



WITHDRAWALS IN MILLION GALLONS PER DAY							
	Public Supply	Domestic & Commercial	Industry & Mining	Irrigation	Livestock	Thermo-electric	TOTALS
Ground Water	0.97	0.40	0.00	2.45	0.01	0.00	3.83
Surface Water	0.00	0.00	0.00	2.55	0.08	0.00	2.63
TOTALS	0.97	0.40	0.00	5.00	0.09	0.00	6.46

Withdrawals by Major Public Suppliers (Mgal/d):

	GW	SW
City of Cochran	0.96	0.00

Withdrawals by Major Industrial Groups (Mgal/d):

SIC	GW	SW
None		

BRANTLEY COUNTY

Population: 11,077
 Population served by public supply: 1,958
 Acres irrigated: 537
 Hydroelectric use (Mgal/d): 0



WITHDRAWALS IN MILLION GALLONS PER DAY							
	Public Supply	Domestic & Commercial	Industry & Mining	Irrigation	Livestock	Thermo-electric	TOTALS
Ground Water	0.39	0.69	0.97	0.11	0.02	0.00	2.18
Surface Water	0.00	0.00	0.00	0.05	0.10	0.00	0.15
TOTALS	0.39	0.69	0.97	0.16	0.12	0.00	2.33

Withdrawals by Major Public Suppliers (Mgal/d):

	GW	SW
City of Hoboken	0.21	0.00
City of Nahunta	0.14	0.00

Withdrawals by Major Industrial Groups (Mgal/d):

SIC	GW	SW
14 Mining	0.97	0.00

BROOKS COUNTY

Population: 15,398
 Population served by public supply: 6,887
 Acres irrigated: 17,015
 Hydroelectric use (Mgal/d): 0



WITHDRAWALS IN MILLION GALLONS PER DAY							
	Public Supply	Domestic & Commercial	Industry & Mining	Irrigation	Livestock	Thermo-electric	TOTALS
Ground Water	1.27	0.68	0.00	16.41	0.04	0.00	18.40
Surface Water	0.00	0.00	0.00	7.52	0.24	0.00	7.76
TOTALS	1.27	0.68	0.00	23.93	0.28	0.00	26.16

Withdrawals by Major Public Suppliers (Mgal/d):

	GW	SW
Town of Barwick	0.07	0.00
City of Morven	0.08	0.00
City of Quitman	1.07	0.00

Withdrawals by Major Industrial Groups (Mgal/d):

SIC	GW	SW
None		

BRYAN COUNTY

Population: 15,438
 Population served by public supply: 6,253
 Acres irrigated: 0
 Hydroelectric use (Mgal/d): 0



WITHDRAWALS IN MILLION GALLONS PER DAY							
	Public Supply	Domestic & Commercial	Industry & Mining	Irrigation	Livestock	Thermo-electric	TOTALS
Ground Water	0.76	0.70	0.01	0.00	0.00	0.00	1.47
Surface Water	0.00	0.00	0.00	0.00	0.01	0.00	0.01
TOTALS	0.76	0.70	0.01	0.00	0.01	0.00	1.48

Withdrawals by Major Public Suppliers (Mgal/d):

	GW	SW
City of Pembroke	0.11	0.00
City of Richmond Hill	0.40	0.00

Withdrawals by Major Industrial Groups (Mgal/d):

SIC	GW	SW
24 Lumber	0.01	0.00

BULLOCH COUNTY

Population: 43,125
 Population served by public supply: 30,063
 Acres irrigated: 9,705
 Hydroelectric use (Mgal/d): 0



WITHDRAWALS IN MILLION GALLONS PER DAY							
	Public Supply	Domestic & Commercial	Industry & Mining	Irrigation	Livestock	Thermo-electric	TOTALS
Ground Water	4.46	1.50	1.12	1.61	0.04	0.00	8.73
Surface Water	0.00	0.00	0.00	1.11	0.24	0.00	1.35
TOTALS	4.46	1.50	1.12	2.72	0.28	0.00	10.08

Withdrawals by Major Public Suppliers (Mgal/d):

	GW	SW
Town of Brooklet	0.09	0.00
Nevils Water Assoc.	0.02	0.00
Town of Portal	1.30	0.00
Town of Register	0.01	0.00
City of Statesboro	2.62	0.00
Statesboro-Brooks Instruments	0.08	0.00

Withdrawals by Major Industrial Groups (Mgal/d):

SIC	GW	SW
33 Primary Metals	0.94	0.00
34 Metals Products	0.18	0.00

BURKE COUNTY

Population: 20,579
 Population served by public supply: 8,354
 Acres irrigated: 16,946
 Hydroelectric use (Mgal/d): 0



WITHDRAWALS IN MILLION GALLONS PER DAY							
	Public Supply	Domestic & Commercial	Industry & Mining	Irrigation	Livestock	Thermo-electric	TOTALS
Ground Water	1.20	0.91	0.00	2.57	0.04	2.27	6.99
Surface Water	0.91	0.00	0.00	0.45	0.14	62.27	63.77
TOTALS	2.11	0.91	0.00	3.02	0.18	64.54	70.76

Withdrawals by Major Public Suppliers (Mgal/d):

	GW	SW
Town of Girard	0.02	0.00
City of Midville	0.11	0.00
Town of Sardis	0.10	0.00
City of Vidette	0.01	0.00
City of Waynesboro	0.92	0.43

Withdrawals by Major Industrial Groups (Mgal/d):

SIC	GW	SW
None		

BUTTS COUNTY

Population: 15,326
 Population served by public supply: 7,143
 Acres irrigated: 137
 Hydroelectric use (Mgal/d): 835



WITHDRAWALS IN MILLION GALLONS PER DAY							
	Public Supply	Domestic & Commercial	Industry & Mining	Irrigation	Livestock	Thermo-electric	TOTALS
Ground Water	0.18	0.84	0.00	0.00	0.00	0.00	1.02
Surface Water	1.03	0.00	0.00	0.26	0.06	0.00	1.35
TOTALS	1.21	0.84	0.00	0.26	0.06	0.00	2.37

Withdrawals by Major Public Suppliers (Mgal/d):

	GW	SW
City of Flovilla	0.09	0.00
City of Jackson	0.00	1.03
Town of Jenkinsburg	0.06	0.00

Withdrawals by Major Industrial Groups (Mgal/d):

SIC	GW	SW
None		

CALHOUN COUNTY

Population: 5,013
 Population served by public supply: 3,462
 Acres irrigated: 26,717
 Hydroelectric use (Mgal/d): 0



WITHDRAWALS IN MILLION GALLONS PER DAY							
	Public Supply	Domestic & Commercial	Industry & Mining	Irrigation	Livestock	Thermo-electric	TOTALS
Ground Water	0.59	0.12	0.00	5.98	0.01	0.00	6.70
Surface Water	0.00	0.00	0.00	2.50	0.04	0.00	2.54
TOTALS	0.59	0.12	0.00	8.48	0.05	0.00	9.24

Withdrawals by Major Public Suppliers (Mgal/d):

	GW	SW
City of Arlington	0.31	0.00
City of Edison	0.19	0.00
City of Leary	0.05	0.00
City of Morgan	0.05	0.00

Withdrawals by Major Industrial Groups (Mgal/d):

SIC	GW	SW
None		

CAMDEN COUNTY

Population: 30,167
 Population served by public supply: 19,858
 Acres irrigated: 206
 Hydroelectric use (Mgal/d): 0



WITHDRAWALS IN MILLION GALLONS PER DAY							
	Public Supply	Domestic & Commercial	Industry & Mining	Irrigation	Livestock	Thermo-electric	TOTALS
Ground Water	2.19	3.88	32.18	0.03	0.00	0.00	38.28
Surface Water	0.00	0.00	6.17	0.00	0.01	0.00	6.18
TOTALS	2.19	3.88	38.35	0.03	0.01	0.00	44.46

Withdrawals by Major Public Suppliers (Mgal/d):

	GW	SW
City of Kingsland	0.48	0.00
City of St. Marys	1.11	0.00
City of Woodbine	0.14	0.00

Withdrawals by Major Industrial Groups (Mgal/d):

SIC	GW	SW
26 Paper	31.78	6.17
28 Chemicals	0.40	0.00
29 Petroleum	0.72	0.00

CANDLER COUNTY

Population: 7,744
 Population served by public supply: 3,863
 Acres irrigated: 9,360
 Hydroelectric use (Mgal/d): 0



WITHDRAWALS IN MILLION GALLONS PER DAY							
	Public Supply	Domestic & Commercial	Industry & Mining	Irrigation	Livestock	Thermo-electric	TOTALS
Ground Water	0.69	0.29	0.00	0.87	0.01	0.00	1.86
Surface Water	0.00	0.00	0.00	2.53	0.11	0.00	2.64
TOTALS	0.69	0.29	0.00	3.40	0.12	0.00	4.50

Withdrawals by Major Public Suppliers (Mgal/d):

	GW	SW
City of Metter	0.66	0.00
Town of Pulaski	0.03	0.00

Withdrawals by Major Industrial Groups (Mgal/d):

SIC	GW	SW
None		

CARROLL COUNTY

Population: 71,422
 Population served by public supply: 41,655
 Acres irrigated: 475
 Hydroelectric use (Mgal/d): 0



WITHDRAWALS IN MILLION GALLONS PER DAY							
	Public Supply	Domestic & Commercial	Industry & Mining	Irrigation	Livestock	Thermo-electric	TOTALS
Ground Water	0.57	2.28	0.00	0.38	0.01	0.00	3.24
Surface Water	8.58	0.00	0.15	0.00	0.52	0.00	9.25
TOTALS	9.15	2.28	0.15	0.38	0.53	0.00	12.49

Withdrawals by Major Public Suppliers (Mgal/d):

	GW	SW
City of Bowdon	0.00	0.74
City of Carrollton	0.00	6.93
City of Mt. Zion	0.04	0.00
Town of Roopville	0.02	0.00
City of Temple	0.00	0.17
City of Villa Rica	0.00	0.73
Town of Whitesburg	0.06	0.00

Withdrawals by Major Industrial Groups (Mgal/d):

SIC	GW	SW
33 Primary Metals	0.00	0.15

CATOOSA COUNTY

Population: 42,464
 Population served by public supply: 30,910
 Acres irrigated: 392
 Hydroelectric use (Mgal/d): 0



WITHDRAWALS IN MILLION GALLONS PER DAY							
	Public Supply	Domestic & Commercial	Industry & Mining	Irrigation	Livestock	Thermo-electric	TOTALS
Ground Water	2.58	0.88	0.00	0.25	0.01	0.00	3.72
Surface Water	0.72	0.00	0.00	0.37	0.16	0.00	1.25
TOTALS	3.30	0.88	0.00	0.62	0.17	0.00	4.97

Withdrawals by Major Public Suppliers (Mgal/d):

	GW	SW
Catoosa County Water System	2.55	0.00
City of Fort Oglethorpe	0.03	0.00
Houston Valley Water System	0.00	0.00
City of Ringgold	0.00	0.72

Withdrawals by Major Industrial Groups (Mgal/d):

SIC	GW	SW
None		

CHARLTON COUNTY

Population: 8,496
 Population served by public supply: 3,700
 Acres irrigated: 110
 Hydroelectric use (Mgal/d): 0



WITHDRAWALS IN MILLION GALLONS PER DAY							
	Public Supply	Domestic & Commercial	Industry & Mining	Irrigation	Livestock	Thermo-electric	TOTALS
Ground Water	0.67	0.48	0.36	0.03	0.01	0.00	1.55
Surface Water	0.00	0.00	0.00	0.07	0.05	0.00	0.12
TOTALS	0.67	0.48	0.36	0.10	0.06	0.00	1.67

Withdrawals by Major Public Suppliers (Mgal/d):

	GW	SW
City of Folkston	0.67	0.00

Withdrawals by Major Industrial Groups (Mgal/d):

SIC	GW	SW
14 Mining	0.36	0.00

CHATHAM COUNTY

Population: 216,935
 Population served by public supply: 189,384
 Acres irrigated: 1,250
 Hydroelectric use (Mgal/d): 0



WITHDRAWALS IN MILLION GALLONS PER DAY							
	Public Supply	Domestic & Commercial	Industry & Mining	Irrigation	Livestock	Thermo-electric	TOTALS
Ground Water	28.80	3.56	50.60	2.55	0.01	2.38	87.90
Surface Water	35.95	0.00	29.24	0.00	0.03	363.00	428.22
TOTALS	64.75	3.56	79.84	2.55	0.04	365.38	516.12

Withdrawals by Major Public Suppliers (Mgal/d):

	GW	SW
City of Bloomingdale	0.15	0.00
Chatham County	0.03	0.00
City of Garden City	0.92	0.00
Hunter Army Airfield	1.35	0.00
Town of Pooler	0.29	0.00
City of Port Wentworth	0.51	0.00
City of Savannah	21.16	0.00
Savannah Ind. & Dom. Water Syst.	0.00	35.94
Skidaway Island Utilities	0.41	0.00
Town of Thunderbolt	0.43	0.00
City of Tybee Island	0.25	0.00

Withdrawals by Major Industrial Groups (Mgal/d):

	GW	SW
14 Mining	0.20	0.00
20 Food	2.82	0.00
24 Lumber	0.06	0.00
26 Paper	26.04	25.12
28 Chemicals	20.61	4.12
28 Petroleum	0.73	0.00
32 Stone, Clay	0.14	0.00

CHATTAHOOCHEE COUNTY

Population: 16,934
 Population served by public supply: 16,595
 Acres irrigated: 0
 Hydroelectric use (Mgal/d): 0



WITHDRAWALS IN MILLION GALLONS PER DAY							
	Public Supply	Domestic & Commercial	Industry & Mining	Irrigation	Livestock	Thermo-electric	TOTALS
Ground Water	0.38	0.03	0.00	0.00	0.00	0.00	0.41
Surface Water	6.61	6.61	0.00	0.00	0.00	0.00	13.22
TOTALS	6.99	6.64	0.00	0.00	0.00	0.00	13.63

Withdrawals by Major Public Suppliers (Mgal/d):

	GW	SW
Chatahoochee County Water Syst.	0.21	0.00
City of Cusseta	0.17	0.00

Withdrawals by Major Industrial Groups (Mgal/d):

	GW	SW
None		

CHATTOOGA COUNTY

Population: 22,242
 Population served by public supply: 11,621
 Acres irrigated: 38
 Hydroelectric use (Mgal/d): 0



WITHDRAWALS IN MILLION GALLONS PER DAY							
	Public Supply	Domestic & Commercial	Industry & Mining	Irrigation	Livestock	Thermo-electric	TOTALS
Ground Water	1.10	0.84	6.87	0.00	0.01	0.00	8.82
Surface Water	2.14	0.00	0.76	0.02	0.12	0.00	3.04
TOTALS	3.24	0.84	7.63	0.02	0.13	0.00	11.86

Withdrawals by Major Public Suppliers (Mgal/d):

	GW	SW
Chattooga County Water System	0.36	0.00
Town of Lyerly	0.09	0.00
Town of Menlo	0.09	0.00
City of Summerville	0.42	2.14
Town of Trion	0.13	0.00

Withdrawals by Major Industrial Groups (Mgal/d):

SIC	GW	SW
22 Textiles	6.87	0.76

CHEROKEE COUNTY

Population: 90,204
 Population served by public supply: 78,175
 Acres irrigated: 591
 Hydroelectric use (Mgal/d): 0



WITHDRAWALS IN MILLION GALLONS PER DAY							
	Public Supply	Domestic & Commercial	Industry & Mining	Irrigation	Livestock	Thermo-electric	TOTALS
Ground Water	0.25	0.90	0.00	0.00	0.01	0.00	1.16
Surface Water	5.58	0.00	0.39	0.69	0.50	0.00	6.83
TOTALS	5.83	0.90	0.39	0.69	0.51	0.00	8.32

Withdrawals by Major Public Suppliers (Mgal/d):

	GW	SW
City of Ball Ground	0.11	0.00
City of Canton	0.00	1.89

Withdrawals by Major Industrial Groups (Mgal/d):

SIC	GW	SW
20 Food	0.00	0.12
22 Textiles	0.00	0.19

CLARKE COUNTY

Population: 87,594
 Population served by public supply: 73,754
 Acres irrigated: 235
 Hydroelectric use (Mgal/d): 159



WITHDRAWALS IN MILLION GALLONS PER DAY							
	Public Supply	Domestic & Commercial	Industry & Mining	Irrigation	Livestock	Thermo-electric	TOTALS
Ground Water	0.30	1.05	0.00	0.00	0.00	0.00	1.35
Surface Water	15.13	0.00	0.00	0.38	0.10	0.00	15.61
TOTALS	15.43	1.05	0.00	0.38	0.10	0.00	16.96

Withdrawals by Major Public Suppliers (Mgal/d):

	GW	SW
City of Athens	0.00	15.13

Withdrawals by Major Industrial Groups (Mgal/d):

SIC	GW	SW
None		

CLAY COUNTY

Population: 3,364
 Population served by public supply: 1,645
 Acres irrigated: 3,850
 Hydroelectric use (Mgal/d): 6,070



WITHDRAWALS IN MILLION GALLONS PER DAY							
	Public Supply	Domestic & Commercial	Industry & Mining	Irrigation	Livestock	Thermo-electric	TOTALS
Ground Water	0.19	0.15	0.00	0.15	0.01	0.00	0.50
Surface Water	0.00	0.00	0.00	1.13	0.03	0.00	1.16
TOTALS	0.19	0.15	0.00	1.28	0.04	0.00	1.66

Withdrawals by Major Public Suppliers (Mgal/d):

	GW	SW
Town of Bluffton	0.01	0.00
City of Fort Gaines	0.18	0.00

Withdrawals by Major Industrial Groups (Mgal/d):

SIC	GW	SW
None		

CLAYTON COUNTY

Population: 182,052
 Population served by public supply: 182,052
 Acres irrigated: 29
 Hydroelectric use (Mgal/d): 0



WITHDRAWALS IN MILLION GALLONS PER DAY							
	Public Supply	Domestic & Commercial	Industry & Mining	Irrigation	Livestock	Thermo-electric	TOTALS
Ground Water	1.28	0.01	0.00	0.07	0.01	0.00	1.37
Surface Water	20.13	0.00	0.00	0.01	0.03	0.00	20.17
TOTALS	21.41	0.01	0.00	0.08	0.04	0.00	21.54

Withdrawals by Major Public Suppliers (Mgal/d):

	GW	SW
Clayton County Water Auth.	0.00	20.13
City of Jonesboro	0.37	0.00
City of Riverdale	0.86	0.00

Withdrawals by Major Industrial Groups (Mgal/d):

SIC	GW	SW
None		

CLINCH COUNTY

Population: 6,160
 Population served by public supply: 3,511
 Acres irrigated: 216
 Hydroelectric use (Mgal/d): 0



WITHDRAWALS IN MILLION GALLONS PER DAY							
	Public Supply	Domestic & Commercial	Industry & Mining	Irrigation	Livestock	Thermo-electric	TOTALS
Ground Water	0.32	0.20	0.00	0.16	0.00	0.00	0.68
Surface Water	0.00	0.00	0.00	0.06	0.03	0.00	0.09
TOTALS	0.32	0.20	0.00	0.22	0.03	0.00	0.77

Withdrawals by Major Public Suppliers (Mgal/d):

	GW	SW
Town of Dupont	0.01	0.00
City of Homerville	0.32	0.00

Withdrawals by Major Industrial Groups (Mgal/d):

SIC	GW	SW
None		

COBB COUNTY

Population: 447,745
 Population served by public supply: 438,790
 Acres irrigated: 1,383
 Hydroelectric use (Mgal/d): 0



WITHDRAWALS IN MILLION GALLONS PER DAY							
	Public Supply	Domestic & Commercial	Industry & Mining	Irrigation	Livestock	Thermo-electric	TOTALS
Ground Water	0.19	0.68	0.00	0.43	0.01	0.00	1.31
Surface Water	74.96	0.00	1.23	2.27	0.04	319.76	398.26
TOTALS	75.15	0.68	1.23	2.70	0.05	319.76	399.57

Withdrawals by Major Public Suppliers (Mgal/d):

	GW	SW
Cobb County-Marietta Water Auth.	0.00	74.96
City of Powder Springs	0.13	0.00

Withdrawals by Major Industrial Groups (Mgal/d):

	SIC	GW	SW
26 Paper		0.00	1.23

COFFEE COUNTY

Population: 29,592
 Population served by public supply: 17,890
 Acres irrigated: 5,843
 Hydroelectric use (Mgal/d): 0



WITHDRAWALS IN MILLION GALLONS PER DAY							
	Public Supply	Domestic & Commercial	Industry & Mining	Irrigation	Livestock	Thermo-electric	TOTALS
Ground Water	4.20	0.96	0.00	0.69	0.04	0.00	5.89
Surface Water	0.00	0.00	0.00	1.81	0.67	0.00	2.48
TOTALS	4.20	0.96	0.00	2.50	0.71	0.00	8.37

Withdrawals by Major Public Suppliers (Mgal/d):

	GW	SW
City of Ambrose	0.04	0.00
City of Broxton	0.15	0.00
City of Douglas	3.77	0.00
City of Nicholls	0.13	0.00

Withdrawals by Major Industrial Groups (Mgal/d):

	SIC	GW	SW
None			

COLQUITT COUNTY

Population: 36,645
 Population served by public supply: 29,838
 Acres irrigated: 33,040
 Hydroelectric use (Mgal/d): 0



WITHDRAWALS IN MILLION GALLONS PER DAY							
	Public Supply	Domestic & Commercial	Industry & Mining	Irrigation	Livestock	Thermo-electric	TOTALS
Ground Water	3.70	0.54	1.29	6.22	0.06	0.00	11.81
Surface Water	0.00	0.00	0.00	4.78	0.40	0.00	5.18
TOTALS	3.70	0.54	1.29	11.00	0.46	0.00	16.99

Withdrawals by Major Public Suppliers (Mgal/d):

	GW	SW
Town of Berlin	0.02	0.00
City of Doerun	0.09	0.00
Town of Ellenton	0.00	0.00
Town of Funston	0.03	0.00
City of Moultrie	3.22	0.00
Town of Norman Park	0.15	0.00
Town of Riverside	0.04	0.00

Withdrawals by Major Industrial Groups (Mgal/d):

	GW	SW
20 Food	0.55	0.00
28 Chemicals	0.50	0.00
34 Metal Products	0.24	0.00

COLUMBIA COUNTY

Population: 66,031
 Population served by public supply: 56,343
 Acres irrigated: 48
 Hydroelectric use (Mgal/d): 3,570



WITHDRAWALS IN MILLION GALLONS PER DAY							
	Public Supply	Domestic & Commercial	Industry & Mining	Irrigation	Livestock	Thermo-electric	TOTALS
Ground Water	0.89	1.06	0.00	0.01	0.00	0.00	1.96
Surface Water	7.70	0.00	0.00	0.01	0.05	0.00	7.76
TOTALS	8.59	1.06	0.00	0.02	0.05	0.00	9.72

Withdrawals by Major Public Suppliers (Mgal/d):

	GW	SW
Columbia County Water Dept.	0.01	7.25
City of Grovetown	0.04	0.00
City of Harlem	0.28	0.00

Withdrawals by Major Industrial Groups (Mgal/d):

	GW	SW
None		

COOK COUNTY

Population: 13,456
 Population served by public supply: 8,588
 Acres irrigated: 13,125
 Hydroelectric use (Mgal/d): 0



WITHDRAWALS IN MILLION GALLONS PER DAY							
	Public Supply	Domestic & Commercial	Industry & Mining	Irrigation	Livestock	Thermo-electric	TOTALS
Ground Water	2.87	0.49	0.00	1.57	0.01	0.00	4.94
Surface Water	0.00	0.00	0.00	1.62	0.06	0.00	1.68
TOTALS	2.87	0.49	0.00	3.19	0.07	0.00	6.62

Withdrawals by Major Public Suppliers (Mgal/d):

	GW	SW
City of Adel	2.51	0.00
Town of Cecil	0.10	0.00
Town of Lenox	0.09	0.00
Town of Sparks	0.16	0.00

Withdrawals by Major Industrial Groups (Mgal/d):

	SIC
	None

COWETA COUNTY

Population: 53,853
 Population served by public supply: 27,289
 Acres irrigated: 142
 Hydroelectric use (Mgal/d): 0



WITHDRAWALS IN MILLION GALLONS PER DAY							
	Public Supply	Domestic & Commercial	Industry & Mining	Irrigation	Livestock	Thermo-electric	TOTALS
Ground Water	1.35	2.24	0.33	0.18	0.01	0.00	4.11
Surface Water	3.65	0.00	0.53	0.00	0.10	437.33	441.61
TOTALS	5.00	2.24	0.86	0.18	0.11	437.33	445.72

Withdrawals by Major Public Suppliers (Mgal/d):

	GW	SW
City of Grantville	0.11	0.00
Town of Moreland	0.02	0.00
City of Newnan	0.00	3.54
City of Senoia	0.00	0.11
Town of Turin	0.03	0.00

Withdrawals by Major Industrial Groups (Mgal/d):

	SIC
	22 Textiles

CRAWFORD COUNTY

Population: 8,991
 Population served by public supply: 1,102
 Acres irrigated: 1,477
 Hydroelectric use (Mgal/d): 0



WITHDRAWALS IN MILLION GALLONS PER DAY							
	Public Supply	Domestic & Commercial	Industry & Mining	Irrigation	Livestock	Thermo-electric	TOTALS
Ground Water	0.15	0.79	0.00	0.46	0.91	0.00	2.31
Surface Water	0.00	0.00	0.00	0.05	0.97	0.00	1.02
TOTALS	0.15	0.79	0.00	0.51	1.88	0.00	3.33

Withdrawals by Major Public Suppliers (Mgal/d):

	GW	SW
City of Roberta	0.14	0.00

Withdrawals by Major Industrial Groups (Mgal/d):

	SIC	GW	SW
	None		

CRISP COUNTY

Population: 20,011
 Population served by public supply: 16,682
 Acres irrigated: 20,910
 Hydroelectric use (Mgal/d): 0



WITHDRAWALS IN MILLION GALLONS PER DAY							
	Public Supply	Domestic & Commercial	Industry & Mining	Irrigation	Livestock	Thermo-electric	TOTALS
Ground Water	1.00	4.62	0.00	3.61	0.03	0.00	9.26
Surface Water	0.00	0.00	0.00	5.21	0.08	0.00	5.29
TOTALS	1.00	4.62	0.00	8.82	0.11	0.00	14.55

Withdrawals by Major Public Suppliers (Mgal/d):

	GW	SW
Town of Arabi	0.07	0.00
City of Cordele	0.84	0.00

Withdrawals by Major Industrial Groups (Mgal/d):

	SIC	GW	SW
	None		

DADE COUNTY

Population: 13,147
 Population served by public supply: 13,050
 Acres irrigated: 10
 Hydroelectric use (Mgal/d): 0



WITHDRAWALS IN MILLION GALLONS PER DAY							
	Public Supply	Domestic & Commercial	Industry & Mining	Irrigation	Livestock	Thermo-electric	TOTALS
Ground Water	0.00	0.00	0.00	0.01	0.01	0.00	0.03
Surface Water	1.34	0.00	0.00	0.00	0.11	0.00	1.45
TOTALS	1.34	0.00	0.00	0.01	0.12	0.00	1.48

Withdrawals by Major Public Suppliers (Mgal/d):

Withdrawals by Major Industrial Groups (Mgal/d):

	GW	SW	SIC	GW	SW
Dade County Water System	0.00	1.34	None		

DAWSON COUNTY

Population: 9,429
 Population served by public supply: 1,727
 Acres irrigated: 23
 Hydroelectric use (Mgal/d): 0



WITHDRAWALS IN MILLION GALLONS PER DAY							
	Public Supply	Domestic & Commercial	Industry & Mining	Irrigation	Livestock	Thermo-electric	TOTALS
Ground Water	0.12	0.60	0.00	0.01	0.00	0.00	0.73
Surface Water	0.11	0.00	0.00	0.01	0.21	0.00	0.33
TOTALS	0.23	0.60	0.00	0.02	0.21	0.00	1.06

Withdrawals by Major Public Suppliers (Mgal/d):

Withdrawals by Major Industrial Groups (Mgal/d):

	GW	SW	SIC	GW	SW
Town of Dawsonville	0.00	0.11	None		

DECATUR COUNTY

Population: 25,511
 Population served by public supply: 13,331
 Acres irrigated: 80,387
 Hydroelectric use (Mgal/d): 0



WITHDRAWALS IN MILLION GALLONS PER DAY							
	Public Supply	Domestic & Commercial	Industry & Mining	Irrigation	Livestock	Thermo-electric	TOTALS
Ground Water	2.50	1.25	0.61	27.23	0.14	0.00	31.73
Surface Water	0.00	0.00	1.50	3.57	0.06	0.00	5.13
TOTALS	2.50	1.25	2.11	30.80	0.20	0.00	36.86

Withdrawals by Major Public Suppliers (Mgal/d):

	GW	SW
Town of Attapulgus	0.10	0.00
City of Bainbridge	2.29	0.00
Town of Brinson	0.03	0.00
Town of Climax	0.04	0.00

Withdrawals by Major Industrial Groups (Mgal/d):

	GW	SW
22 Textiles	0.45	0.00
28 Chemicals	0.00	1.50
32 Stone, Clay	0.16	0.00

DEKALB COUNTY

Population: 545,837
 Population served by public supply: 534,839
 Acres irrigated: 620
 Hydroelectric use (Mgal/d): 0



WITHDRAWALS IN MILLION GALLONS PER DAY							
	Public Supply	Domestic & Commercial	Industry & Mining	Irrigation	Livestock	Thermo-electric	TOTALS
Ground Water	0.09	0.83	0.00	0.00	0.01	0.00	0.93
Surface Water	79.16	0.00	0.00	1.24	0.03	0.00	80.43
TOTALS	79.25	0.83	0.00	1.24	0.04	0.00	81.36

Withdrawals by Major Public Suppliers (Mgal/d):

	GW	SW
City of Clarkston	0.09	0.00
DeKalb County Water System	0.00	79.16

Withdrawals by Major Industrial Groups (Mgal/d):

	GW	SW
None		

DODGE COUNTY

Population: 17,607
 Population served by public supply: 7,663
 Acres irrigated: 13,122
 Hydroelectric use (Mgal/d): 0



WITHDRAWALS IN MILLION GALLONS PER DAY							
	Public Supply	Domestic & Commercial	Industry & Mining	Irrigation	Livestock	Thermo-electric	TOTALS
Ground Water	0.86	0.77	0.00	0.77	0.03	0.00	2.43
Surface Water	0.00	0.00	0.00	2.08	0.15	0.00	2.23
TOTALS	0.86	0.77	0.00	2.85	0.18	0.00	4.66

Withdrawals by Major Public Suppliers (Mgal/d):

	GW	SW
Town of Chauncey	0.03	0.00
Town of Chester	0.04	0.00
City of Eastman	0.72	0.00
Town of Rhine	0.07	0.00

Withdrawals by Major Industrial Groups (Mgal/d):

	GW	SW
SIC		
None		

DOOLY COUNTY

Population: 9,901
 Population served by public supply: 5,875
 Acres irrigated: 22,878
 Hydroelectric use (Mgal/d): 0



WITHDRAWALS IN MILLION GALLONS PER DAY							
	Public Supply	Domestic & Commercial	Industry & Mining	Irrigation	Livestock	Thermo-electric	TOTALS
Ground Water	0.84	0.68	0.00	2.49	0.03	0.00	4.04
Surface Water	0.00	0.00	0.00	0.89	0.08	0.00	0.97
TOTALS	0.84	0.68	0.00	3.38	0.11	0.00	5.01

Withdrawals by Major Public Suppliers (Mgal/d):

	GW	SW
Town of Byromville	0.14	0.00
Town of Lilly	0.01	0.00
City of Pinehurst	0.05	0.00
City of Unadilla	0.20	0.00
City of Vienna	0.44	0.00

Withdrawals by Major Industrial Groups (Mgal/d):

	GW	SW
SIC		
None		

DOUGHERTY COUNTY

Population: 96,311
 Population served by public supply: 96,311
 Acres irrigated: 15,905
 Hydroelectric use (Mgal/d): 1,008



WITHDRAWALS IN MILLION GALLONS PER DAY							
	Public Supply	Domestic & Commercial	Industry & Mining	Irrigation	Livestock	Thermo-electric	TOTALS
Ground Water	18.15	1.14	9.48	6.17	0.04	0.00	34.98
Surface Water	0.00	0.00	0.00	0.55	0.03	92.75	93.33
TOTALS	18.15	1.14	9.48	6.72	0.07	92.75	128.31

Withdrawals by Major Public Suppliers (Mgal/d):

	GW	SW
City of Albany	17.96	0.00
Putney Water System	0.02	0.00

Withdrawals by Major Industrial Groups (Mgal/d):

SIC	GW	SW
14 Mining	0.01	0.00
20 Food	1.42	0.00
26 Paper	3.83	0.00
28 Chemicals	4.03	0.00
30 Rubber	0.05	0.00
32 Stone, Clay	0.14	0.00

DOUGLAS COUNTY

Population: 71,120
 Population served by public supply: 70,409
 Acres irrigated: 3,100
 Hydroelectric use (Mgal/d): 0



WITHDRAWALS IN MILLION GALLONS PER DAY							
	Public Supply	Domestic & Commercial	Industry & Mining	Irrigation	Livestock	Thermo-electric	TOTALS
Ground Water	0.13	0.13	0.00	0.00	0.01	0.00	0.27
Surface Water	5.55	0.00	0.00	0.68	0.03	0.00	6.26
TOTALS	5.68	0.13	0.00	0.68	0.04	0.00	6.53

Withdrawals by Major Public Suppliers (Mgal/d):

	GW	SW
Douglasville - Douglas Co. W&S Authority	0.00	4.62

Withdrawals by Major Industrial Groups (Mgal/d):

SIC	GW	SW
None		

EARLY COUNTY

Population: 11,854
 Population served by public supply: 6,427
 Acres irrigated: 41,116
 Hydroelectric use (Mgal/d): 0



WITHDRAWALS IN MILLION GALLONS PER DAY							
	Public Supply	Domestic & Commercial	Industry & Mining	Irrigation	Livestock	Thermo-electric	TOTALS
Ground Water	1.16	0.42	0.14	4.55	0.04	0.00	6.31
Surface Water	0.00	0.00	107.44	2.81	0.14	0.00	110.39
TOTALS	1.16	0.42	107.58	7.36	0.18	0.00	116.70

Withdrawals by Major Public Suppliers (Mgal/d):

	GW	SW
City of Blakely	1.11	0.00
Town of Damascus	0.03	0.00
Town of Jakin	0.02	0.00

Withdrawals by Major Industrial Groups (Mgal/d):

	GW	SW
26 Paper	0.13	107.44

ECHOLS COUNTY

Population: 2,334
 Population served by public supply: 450
 Acres irrigated: 1,385
 Hydroelectric use (Mgal/d): 0



WITHDRAWALS IN MILLION GALLONS PER DAY							
	Public Supply	Domestic & Commercial	Industry & Mining	Irrigation	Livestock	Thermo-electric	TOTALS
Ground Water	0.06	0.14	0.00	0.33	0.00	0.00	0.53
Surface Water	0.00	0.00	0.00	0.16	0.01	0.00	0.17
TOTALS	0.06	0.14	0.00	0.49	0.01	0.00	0.70

Withdrawals by Major Public Suppliers (Mgal/d):

	GW	SW
Echols County Water Auth.	0.06	0.00

Withdrawals by Major Industrial Groups (Mgal/d):

	GW	SW
None		

EFFINGHAM COUNTY

Population: 25,687
 Population served by public supply: 9,845
 Acres irrigated: 854
 Hydroelectric use (Mgal/d): 0



WITHDRAWALS IN MILLION GALLONS PER DAY							
	Public Supply	Domestic & Commercial	Industry & Mining	Irrigation	Livestock	Thermo-electric	TOTALS
Ground Water	1.02	1.19	3.17	0.23	0.01	0.25	5.87
Surface Water	0.00	0.00	8.29	0.25	0.05	107.00	115.59
TOTALS	1.02	1.19	11.46	0.48	0.06	107.25	121.46

Withdrawals by Major Public Suppliers (Mgal/d):

	GW	SW
City of Guyton	0.16	0.00
Town of Rincon	0.24	0.00
City of Springfield	0.25	0.00

Withdrawals by Major Industrial Groups (Mgal/d):

	GW	SW
14 Mining	1.22	0.00
26 Food	1.95	8.29

ELBERT COUNTY

Population: 18,949
 Population served by public supply: 7,181
 Acres irrigated: 870
 Hydroelectric use (Mgal/d): 2,599



WITHDRAWALS IN MILLION GALLONS PER DAY							
	Public Supply	Domestic & Commercial	Industry & Mining	Irrigation	Livestock	Thermo-electric	TOTALS
Ground Water	0.07	0.89	0.00	0.00	0.01	0.00	0.97
Surface Water	1.49	0.00	0.00	0.43	0.46	0.00	2.38
TOTALS	1.56	0.89	0.00	0.43	0.47	0.00	3.35

Withdrawals by Major Public Suppliers (Mgal/d):

	GW	SW
City of Bowman	0.05	0.00
City of Elberton	0.00	1.49

Withdrawals by Major Industrial Groups (Mgal/d):

	GW	SW
None		

EMANUEL COUNTY

Population: 20,546
 Population served by public supply: 13,098
 Acres irrigated: 11,100
 Hydroelectric use (Mgal/d): 0



WITHDRAWALS IN MILLION GALLONS PER DAY							
	Public Supply	Domestic & Commercial	Industry & Mining	Irrigation	Livestock	Thermo-electric	TOTALS
Ground Water	2.31	0.56	0.20	1.57	0.03	0.00	4.67
Surface Water	0.00	0.00	0.00	0.66	0.14	0.00	0.80
TOTALS	2.31	0.56	0.20	2.23	0.17	0.00	5.47

Withdrawals by Major Public Suppliers (Mgal/d):

	GW	SW
City of Adrian	0.10	0.00
Town of Garfield	0.03	0.00
Town of Nunez	0.01	0.00
Town of Oak Park	0.03	0.00
Town of Stillmore	0.04	0.00
Town of Summertown	0.01	0.00
City of Swainsboro	1.94	0.00
City of Twin City	0.13	0.00

Withdrawals by Major Industrial Groups (Mgal/d):

	GW	SW
20 Food	0.20	0.00

EVANS COUNTY

Population: 8,724
 Population served by public supply: 4,338
 Acres irrigated: 3,258
 Hydroelectric use (Mgal/d): 0



WITHDRAWALS IN MILLION GALLONS PER DAY							
	Public Supply	Domestic & Commercial	Industry & Mining	Irrigation	Livestock	Thermo-electric	TOTALS
Ground Water	0.48	0.33	0.87	0.23	0.01	0.00	1.92
Surface Water	0.00	0.00	0.00	0.76	0.09	0.00	0.85
TOTALS	0.48	0.33	0.87	0.99	0.10	0.00	2.77

Withdrawals by Major Public Suppliers (Mgal/d):

	GW	SW
City of Bellville	0.04	0.00
City of Claxton	0.33	0.00
City of Daisy	0.02	0.00
City of Hagan	0.09	0.00

Withdrawals by Major Industrial Groups (Mgal/d):

	GW	SW
20 Food	0.87	0.00

FANNIN COUNTY

Population: 15,992
 Population served by public supply: 10,030
 Acres irrigated: 145
 Hydroelectric use (Mgal/d): 372



WITHDRAWALS IN MILLION GALLONS PER DAY							
	Public Supply	Domestic & Commercial	Industry & Mining	Irrigation	Livestock	Thermo-electric	TOTALS
Ground Water	0.10	0.50	0.00	0.00	0.01	0.00	0.61
Surface Water	0.72	0.00	0.00	0.00	0.10	0.00	0.82
TOTALS	0.82	0.50	0.00	0.00	0.11	0.00	1.43

Withdrawals by Major Public Suppliers (Mgal/d):

	GW	SW
City of Blue Ridge	0.00	0.39
City of McCaysville	0.00	0.33
Town of Mineral Bluff	0.05	0.00
Town of Morganton	0.05	0.00

Withdrawals by Major Industrial Groups (Mgal/d):

SIC	GW	SW
None		

FAYETTE COUNTY

Population: 62,415
 Population served by public supply: 51,045
 Acres irrigated: 435
 Hydroelectric use (Mgal/d): 0



WITHDRAWALS IN MILLION GALLONS PER DAY							
	Public Supply	Domestic & Commercial	Industry & Mining	Irrigation	Livestock	Thermo-electric	TOTALS
Ground Water	0.55	0.94	0.00	0.24	0.00	0.00	1.73
Surface Water	5.85	0.00	0.00	0.54	0.06	0.00	6.45
TOTALS	6.40	0.94	0.00	0.78	0.06	0.00	8.18

Withdrawals by Major Public Suppliers (Mgal/d):

	GW	SW
Town of Brooks	0.03	0.00
Fayette County Water System	0.27	4.92

Withdrawals by Major Industrial Groups (Mgal/d):

SIC	GW	SW
None		

FLOYD COUNTY

Population: 81,251
 Population served by public supply: 76,100
 Acres irrigated: 1,951
 Hydroelectric use (Mgal/d): 0



WITHDRAWALS IN MILLION GALLONS PER DAY							
	Public Supply	Domestic & Commercial	Industry & Mining	Irrigation	Livestock	Thermo-electric	TOTALS
Ground Water	1.62	0.41	0.00	1.32	0.01	0.00	3.36
Surface Water	10.53	0.42	28.24	2.41	0.17	416.45	458.22
TOTALS	12.15	0.83	28.24	3.73	0.18	416.45	461.58

Withdrawals by Major Public Suppliers (Mgal/d):

	GW	SW
City of Cave Spring	0.00	0.69
Floyd County Water System	0.33	0.00
City of Rome	0.00	9.84

Withdrawals by Major Industrial Groups (Mgal/d):

	SIC	GW	SW
22 Textiles		0.00	2.77
26 Textiles		0.00	25.47

FORSYTH COUNTY

Population: 44,083
 Population served by public supply: 16,205
 Acres irrigated: 107
 Hydroelectric use (Mgal/d): 1,778



WITHDRAWALS IN MILLION GALLONS PER DAY							
	Public Supply	Domestic & Commercial	Industry & Mining	Irrigation	Livestock	Thermo-electric	TOTALS
Ground Water	0.28	2.16	0.00	0.19	0.00	0.00	2.63
Surface Water	4.34	0.00	0.00	0.00	0.64	0.00	4.98
TOTALS	4.62	2.16	0.00	0.19	0.64	0.00	7.61

Withdrawals by Major Public Suppliers (Mgal/d):

	GW	SW
City of Cumming	0.00	4.34

Withdrawals by Major Industrial Groups (Mgal/d):

	SIC	GW	SW
None			

FRANKLIN COUNTY

Population: 16,650
 Population served by public supply: 6,471
 Acres irrigated: 170
 Hydroelectric use (Mgal/d): 0



WITHDRAWALS IN MILLION GALLONS PER DAY							
	Public Supply	Domestic & Commercial	Industry & Mining	Irrigation	Livestock	Thermo-electric	TOTALS
Ground Water	0.37	0.96	0.00	0.12	0.00	0.00	1.45
Surface Water	0.99	0.00	0.00	0.00	0.92	0.00	1.91
TOTALS	1.36	0.96	0.00	0.12	0.92	0.00	3.36

Withdrawals by Major Public Suppliers (Mgal/d):

	GW	SW
City of Canon	0.02	0.00
City of Camesville	0.07	0.00
City of Franklin Springs	0.11	0.00
City of Lavonia	0.00	0.70
City of Royston	0.08	0.29

Withdrawals by Major Industrial Groups (Mgal/d):

SIC	GW	SW
None		

FULTON COUNTY

Population: 648,951
 Population served by public supply: 598,347
 Acres irrigated: 565
 Hydroelectric use (Mgal/d): 1,438



WITHDRAWALS IN MILLION GALLONS PER DAY							
	Public Supply	Domestic & Commercial	Industry & Mining	Irrigation	Livestock	Thermo-electric	TOTALS
Ground Water	0.00	3.95	0.01	0.20	0.01	0.00	4.17
Surface Water	137.51	1.06	0.01	0.74	0.08	0.00	139.40
TOTALS	137.51	5.01	0.02	0.94	0.09	0.00	143.57

Withdrawals by Major Public Suppliers (Mgal/d):

	GW	SW
City of Atlanta	0.00	121.69
City of East Point	0.00	8.99
City of Palmetto	0.00	0.33
City of Roswell	0.00	0.52

Withdrawals by Major Industrial Groups (Mgal/d):

SIC	GW	SW
34 Metal Products	0.01	0.00

GILMER COUNTY

Population: 13,368
 Population served by public supply: 9,274
 Acres irrigated: 87
 Hydroelectric use (Mgal/d): 0



WITHDRAWALS IN MILLION GALLONS PER DAY							
	Public Supply	Domestic & Commercial	Industry & Mining	Irrigation	Livestock	Thermo-electric	TOTALS
Ground Water	0.30	0.49	0.00	0.02	0.00	0.00	0.81
Surface Water	1.65	0.00	0.00	0.01	0.48	0.00	2.14
TOTALS	1.95	0.49	0.00	0.03	0.48	0.00	2.95

Withdrawals by Major Public Suppliers (Mgal/d):

	GW	SW
City of Ellijay	0.30	1.65

Withdrawals by Major Industrial Groups (Mgal/d):

SIC	GW	SW
None		

GLASCOCK COUNTY

Population: 2,357
 Population served by public supply: 889
 Acres irrigated: 200
 Hydroelectric use (Mgal/d): 0



WITHDRAWALS IN MILLION GALLONS PER DAY							
	Public Supply	Domestic & Commercial	Industry & Mining	Irrigation	Livestock	Thermo-electric	TOTALS
Ground Water	0.12	0.11	0.02	0.00	0.01	0.00	0.26
Surface Water	0.00	0.00	0.00	0.01	0.04	0.00	0.05
TOTALS	0.12	0.11	0.02	0.01	0.05	0.00	0.31

Withdrawals by Major Public Suppliers (Mgal/d):

	GW	SW
City of Gibson	0.10	0.00
Town of Mitchell	0.02	0.00

Withdrawals by Major Industrial Groups (Mgal/d):

SIC	GW	SW
14 Mining	0.02	0.00

GLYNN COUNTY

Population: 62,496
 Population served by public supply: 54,434
 Acres irrigated: 1,560
 Hydroelectric use (Mgal/d): 0



WITHDRAWALS IN MILLION GALLONS PER DAY							
	Public Supply	Domestic & Commercial	Industry & Mining	Irrigation	Livestock	Thermo-electric	TOTALS
Ground Water	13.40	2.94	66.09	2.42	0.01	0.03	84.89
Surface Water	0.00	0.00	26.35	0.57	0.01	32.74	59.67
TOTALS	13.40	2.94	92.44	2.99	0.02	32.77	144.56

Withdrawals by Major Public Suppliers (Mgal/d):

	GW	SW
City of Brunswick	6.34	0.00
Jekyll Island Water System	1.40	0.00
St Simons Island Water & Sewer	2.48	0.00
Sea Island Services	1.98	0.00

Withdrawals by Major Industrial Groups (Mgal/d):

SIC	GW	SW
20 Food	0.95	0.00
26 Paper	49.40	26.35*
28 Chemicals	15.44	0.00
32 Stone, Clay	0.05	0.00

* salt water

GORDON COUNTY

Population: 35,072
 Population served by public supply: 29,375
 Acres irrigated: 70
 Hydroelectric use (Mgal/d): 0



WITHDRAWALS IN MILLION GALLONS PER DAY							
	Public Supply	Domestic & Commercial	Industry & Mining	Irrigation	Livestock	Thermo-electric	TOTALS
Ground Water	0.39	0.58	0.26	0.00	0.01	0.00	1.24
Surface Water	11.72	0.00	0.00	0.03	0.60	0.00	12.35
TOTALS	12.11	0.58	0.26	0.03	0.61	0.00	13.59

Withdrawals by Major Public Suppliers (Mgal/d):

	GW	SW
City of Calhoun	0.39	11.56
City of Fairmont	0.00	0.16

Withdrawals by Major Industrial Groups (Mgal/d):

SIC	GW	SW
22 Textiles	0.26	0.00

GRADY COUNTY

Population: 20,279
 Population served by public supply: 10,086
 Acres irrigated: 14,430
 Hydroelectric use (Mgal/d): 0



WITHDRAWALS IN MILLION GALLONS PER DAY							
	Public Supply	Domestic & Commercial	Industry & Mining	Irrigation	Livestock	Thermo-electric	TOTALS
Ground Water	1.59	0.77	0.00	2.86	0.04	0.00	5.26
Surface Water	0.00	0.00	0.00	4.89	0.23	0.00	5.12
TOTALS	1.59	0.77	0.00	7.75	0.27	0.00	10.38

Withdrawals by Major Public Suppliers (Mgal/d):

	GW	SW
City of Cairo	1.46	0.00
City of Whigham	0.09	0.00

Withdrawals by Major Industrial Groups (Mgal/d):

SIC	GW	SW
None		

GREENE COUNTY

Population: 11,793
 Population served by public supply: 7,062
 Acres irrigated: 191
 Hydroelectric use (Mgal/d): 0



WITHDRAWALS IN MILLION GALLONS PER DAY							
	Public Supply	Domestic & Commercial	Industry & Mining	Irrigation	Livestock	Thermo-electric	TOTALS
Ground Water	0.16	0.36	0.00	0.00	0.00	0.00	0.52
Surface Water	0.76	0.00	0.00	0.38	0.20	0.00	1.34
TOTALS	0.92	0.36	0.00	0.38	0.20	0.00	1.86

Withdrawals by Major Public Suppliers (Mgal/d):

	GW	SW
City of Greensboro	0.00	0.53
Town of Siloam	0.04	0.00
City of Union Point	0.00	0.23
Town of White Plains	0.02	0.00
City of Woodville	0.02	0.00

Withdrawals by Major Industrial Groups (Mgal/d):

SIC	GW	SW
32 Stone, Clay	0.00	0.10

GWINNETT COUNTY

Population: 352,910
 Population served by public supply: 352,910
 Acres irrigated: 465
 Hydroelectric use (Mgal/d): 0



WITHDRAWALS IN MILLION GALLONS PER DAY							
	Public Supply	Domestic & Commercial	Industry & Mining	Irrigation	Livestock	Thermo-electric	TOTALS
Ground Water	0.29	0.00	0.00	0.10	0.01	0.00	0.40
Surface Water	60.85	0.00	0.00	0.67	0.14	0.00	61.66
TOTALS	61.14	0.00	0.00	0.77	0.15	0.00	62.06

Withdrawals by Major Public Suppliers (Mgal/d):

	GW	SW
City of Buford	0.00	0.76
City of Dacula	0.16	0.00
City of Grayson	0.03	0.00
Gwinnett County Water System	0.00	56.89
City of Suwanee	0.06	0.00

Withdrawals by Major Industrial Groups (Mgal/d):

SIC	GW	SW
None		

HABERSHAM COUNTY

Population: 27,621
 Population served by public supply: 14,582
 Acres irrigated: 361
 Hydroelectric use (Mgal/d): 857



WITHDRAWALS IN MILLION GALLONS PER DAY							
	Public Supply	Domestic & Commercial	Industry & Mining	Irrigation	Livestock	Thermo-electric	TOTALS
Ground Water	1.34	1.17	0.00	0.00	0.01	0.00	2.52
Surface Water	2.61	0.00	0.05	0.18	0.90	0.00	3.74
TOTALS	3.95	1.17	0.05	0.18	0.91	0.00	6.26

Withdrawals by Major Public Suppliers (Mgal/d):

	GW	SW
Town of Alto	0.27	0.00
Town of Baldwin	0.28	0.00
City of Clarksville	0.00	0.68
City of Cornelia	0.00	1.93
City of Demorest	0.74	0.00
Town of Mt Airy	0.04	0.00

Withdrawals by Major Industrial Groups (Mgal/d):

SIC	GW	SW
22 Textiles	0.00	0.05

HALL COUNTY

Population: 95,428
 Population served by public supply: 71,002
 Acres irrigated: 1,520
 Hydroelectric use (Mgal/d): 0



WITHDRAWALS IN MILLION GALLONS PER DAY							
	Public Supply	Domestic & Commercial	Industry & Mining	Irrigation	Livestock	Thermo-electric	TOTALS
Ground Water	0.35	1.92	0.61	0.71	0.01	0.00	3.60
Surface Water	11.29	0.00	0.32	0.86	0.97	0.00	13.44
TOTALS	11.64	1.92	0.93	1.57	0.98	0.00	17.04

Withdrawals by Major Public Suppliers (Mgal/d):

	GW	SW
Town of Flowery Branch	0.10	0.00
City of Gainesville	0.00	11.29
City of Lula	0.08	0.00

Withdrawals by Major Industrial Groups (Mgal/d):

	GW	SW
20 Food	0.54	0.00
22 Textiles	0.07	0.32

HANCOCK COUNTY

Population: 8,908
 Population served by public supply: 3,608
 Acres irrigated: 600
 Hydroelectric use (Mgal/d): 0



WITHDRAWALS IN MILLION GALLONS PER DAY							
	Public Supply	Domestic & Commercial	Industry & Mining	Irrigation	Livestock	Thermo-electric	TOTALS
Ground Water	0.03	0.40	0.01	0.18	0.01	0.00	0.63
Surface Water	0.39	0.00	0.00	0.00	0.05	0.00	0.44
TOTALS	0.42	0.40	0.01	0.18	0.06	0.00	1.07

Withdrawals by Major Public Suppliers (Mgal/d):

	GW	SW
Devereux Water System	0.02	0.00
City of Sparta	0.00	0.39

Withdrawals by Major Industrial Groups (Mgal/d):

	GW	SW
14 Mining	0.01	0.00

HARALSON COUNTY

Population: 21,966
 Population served by public supply: 21,746
 Acres irrigated: 120
 Hydroelectric use (Mgal/d): 0



WITHDRAWALS IN MILLION GALLONS PER DAY							
	Public Supply	Domestic & Commercial	Industry & Mining	Irrigation	Livestock	Thermo-electric	TOTALS
Ground Water	0.01	0.02	0.00	0.00	0.01	0.00	0.04
Surface Water	2.74	0.00	0.00	0.11	0.19	0.00	3.04
TOTALS	2.75	0.02	0.00	0.11	0.20	0.00	3.08

Withdrawals by Major Public Suppliers (Mgal/d):

	GW	SW
City of Bremen	0.00	0.21
Haralson County Water Auth.	0.01	1.44

Withdrawals by Major Industrial Groups (Mgal/d):

SIC	GW	SW
None		

HARRIS COUNTY

Population: 17,788
 Population served by public supply: 5,831
 Acres irrigated: 235
 Hydroelectric use (Mgal/d): 7,348



WITHDRAWALS IN MILLION GALLONS PER DAY							
	Public Supply	Domestic & Commercial	Industry & Mining	Irrigation	Livestock	Thermo-electric	TOTALS
Ground Water	0.22	1.12	0.00	0.00	0.00	0.00	1.34
Surface Water	0.69	0.00	8.68	0.42	0.07	0.00	9.86
TOTALS	0.91	1.12	8.68	0.42	0.07	0.00	11.20

Withdrawals by Major Public Suppliers (Mgal/d):

	GW	SW
City of Hamilton	0.00	0.08
Harris County Water Works	0.09	0.57
Town of Pine Mountain	0.00	0.04
City of Shiloh	0.04	0.00
Town of Waverly Hall	0.08	0.00

Withdrawals by Major Industrial Groups (Mgal/d):

SIC	GW	SW
22 Textiles	0.00	8.68

HART COUNTY

Population: 19,712
 Population served by public supply: 7,965
 Acres irrigated: 1,554
 Hydroelectric use (Mgal/d): 2,930



WITHDRAWALS IN MILLION GALLONS PER DAY							
	Public Supply	Domestic & Commercial	Industry & Mining	Irrigation	Livestock	Thermo-electric	TOTALS
Ground Water	0.21	0.91	0.00	0.00	0.00	0.00	1.12
Surface Water	1.78	0.00	0.37	0.67	0.43	0.00	3.25
TOTALS	1.99	0.91	0.37	0.67	0.43	0.00	4.37

Withdrawals by Major Public Suppliers (Mgal/d):

	GW	SW
Town of Bowersville	0.10	0.00
City of Hartwell	0.00	1.79

Withdrawals by Major Industrial Groups (Mgal/d):

SIC	GW	SW
None		

HEARD COUNTY

Population: 8,628
 Population served by public supply: 4,173
 Acres irrigated: 326
 Hydroelectric use (Mgal/d): 0



WITHDRAWALS IN MILLION GALLONS PER DAY							
	Public Supply	Domestic & Commercial	Industry & Mining	Irrigation	Livestock	Thermo-electric	TOTALS
Ground Water	0.15	0.36	0.00	0.14	0.00	0.00	0.45
Surface Water	0.28	0.00	0.00	0.28	0.13	3.64	4.33
TOTALS	0.43	0.36	0.00	0.42	0.13	3.64	4.98

Withdrawals by Major Public Suppliers (Mgal/d):

	GW	SW
City of Franklin	0.15	0.00
Franklin/Heard County Water Auth.	0.00	0.28

Withdrawals by Major Industrial Groups (Mgal/d):

SIC	GW	SW
None		

HENRY COUNTY

Population: 58,741
 Population served by public supply: 30,790
 Acres irrigated: 480
 Hydroelectric use (Mgal/d): 0



WITHDRAWALS IN MILLION GALLONS PER DAY							
	Public Supply	Domestic & Commercial	Industry & Mining	Irrigation	Livestock	Thermo-electric	TOTALS
Ground Water	0.31	2.14	0.00	0.31	0.00	0.00	2.76
Surface Water	5.10	0.00	0.00	0.22	0.12	0.00	5.44
TOTALS	5.41	2.14	0.00	0.53	0.12	0.00	8.20

Withdrawals by Major Public Suppliers (Mgal/d):

	GW	SW
City of Hampton	0.08	0.00
Henry County Water Auth.	0.00	4.38
City of Locust Grove	0.00	0.05
City of McDonough	0.09	0.67

Withdrawals by Major Industrial Groups (Mgal/d):

SIC	GW	SW
None		

HOUSTON COUNTY

Population: 89,208
 Population served by public supply: 79,470
 Acres irrigated: 11,035
 Hydroelectric use (Mgal/d): 0



WITHDRAWALS IN MILLION GALLONS PER DAY							
	Public Supply	Domestic & Commercial	Industry & Mining	Irrigation	Livestock	Thermo-electric	TOTALS
Ground Water	13.44	4.03	1.93	3.25	0.02	0.00	22.67
Surface Water	0.00	0.00	0.00	1.03	0.11	0.00	1.14
TOTALS	13.44	4.03	1.93	4.28	0.13	0.00	23.81

Withdrawals by Major Public Suppliers (Mgal/d):

	GW	SW
City of Centerville	0.77	0.00
City of Elberta	0.11	0.00
Houston County	3.19	0.00
City of Perry	1.58	0.00
City of Warner Robins	6.51	0.00

Withdrawals by Major Industrial Groups (Mgal/d):

SIC	GW	SW
20 Food	1.93	0.00

IRWIN COUNTY

Population: 8,649
 Population served by public supply: 3,944
 Acres irrigated: 14,737
 Hydroelectric use (Mgal/d): 0



WITHDRAWALS IN MILLION GALLONS PER DAY							
	Public Supply	Domestic & Commercial	Industry & Mining	Irrigation	Livestock	Thermo-electric	TOTALS
Ground Water	0.69	0.35	0.01	1.42	0.03	0.00	2.50
Surface Water	0.00	0.00	0.00	1.23	0.16	0.00	1.39
TOTALS	0.69	0.35	0.01	2.65	0.19	0.00	3.89

Withdrawals by Major Public Suppliers (Mgal/d):

	GW	SW
Irwinville Water Works Inc.	0.03	0.00
City of Mystic	0.03	0.00
City of Ocilla	0.62	0.00

Withdrawals by Major Industrial Groups (Mgal/d):

SIC	GW	SW
20 Food	0.01	0.00

JACKSON COUNTY

Population: 30,005
 Population served by public supply: 10,682
 Acres irrigated: 226
 Hydroelectric use (Mgal/d): 0



WITHDRAWALS IN MILLION GALLONS PER DAY							
	Public Supply	Domestic & Commercial	& Industry & Mining	Irrigation	Livestock	Thermo-electric	TOTALS
Ground Water	0.27	1.75	0.66	0.06	0.00	0.00	2.74
Surface Water	2.32	0.00	0.00	0.10	1.11	0.00	3.53
TOTALS	2.59	1.75	0.66	0.16	1.11	0.00	6.27

Withdrawals by Major Public Suppliers (Mgal/d):

	GW	SW
Town of Braselton	0.05	0.00
City of Commerce	0.00	1.26
City of Hoschton	0.04	0.00
City of Jefferson	0.00	1.06
Nicholson Water Assoc.	0.12	0.00

Withdrawals by Major Industrial Groups (Mgal/d):

SIC	GW	SW
20 Food	0.65	0.00

JASPER COUNTY

Population: 8,453
 Population served by public supply: 3,901
 Acres irrigated: 21
 Hydroelectric use (Mgal/d): 0



WITHDRAWALS IN MILLION GALLONS PER DAY							
	Public Supply	Domestic & Commercial	Industry & Mining	Irrigation	Livestock	Thermo-electric	TOTALS
Ground Water	0.14	0.34	0.00	0.00	0.01	0.00	0.49
Surface Water	0.25	0.00	0.90	0.04	0.24	0.00	1.43
TOTALS	0.39	0.34	0.90	0.04	0.25	0.00	1.92

Withdrawals by Major Public Suppliers (Mgal/d):

	GW	SW
City of Monticello	0.00	0.24
Town of Shady Dale	0.10	0.00

Withdrawals by Major Industrial Groups (Mgal/d):

SIC	GW	SW
32 Stone, Clay	0.00	0.90

JEFF DAVIS COUNTY

Population: 12,032
 Population served by public supply: 5,157
 Acres irrigated: 16,500
 Hydroelectric use (Mgal/d): 0



WITHDRAWALS IN MILLION GALLONS PER DAY							
	Public Supply	Domestic & Commercial	Industry & Mining	Irrigation	Livestock	Thermo-electric	TOTALS
Ground Water	1.00	0.52	0.72	3.39	0.02	0.00	5.65
Surface Water	0.00	0.00	0.00	1.08	0.08	0.00	1.16
TOTALS	1.00	0.52	0.72	4.47	0.10	0.00	6.81

Withdrawals by Major Public Suppliers (Mgal/d):

	GW	SW
City of Denton	0.04	0.00
City of Hazelhurst	0.95	0.00

Withdrawals by Major Industrial Groups (Mgal/d):

SIC	GW	SW
22 Textiles	0.72	0.00

JEFFERSON COUNTY

Population: 17,408
 Population served by public supply: 8,902
 Acres irrigated: 19,585
 Hydroelectric use (Mgal/d): 0



WITHDRAWALS IN MILLION GALLONS PER DAY							
	Public Supply	Domestic & Commercial	Industry & Mining	Irrigation	Livestock	Thermo-electric	TOTALS
Ground Water	1.86	0.64	4.78	2.60	0.04	0.00	9.92
Surface Water	0.00	0.00	4.19	4.34	0.14	0.00	8.67
TOTALS	1.86	0.64	8.97	6.94	0.18	0.00	18.59

Withdrawals by Major Public Suppliers (Mgal/d):

	GW	SW
Town of Avera	0.02	0.00
Town of Bartow	0.01	0.00
City of Louisville	1.37	0.00
Town of Stapleton	0.05	0.00
City of Wadley	0.16	0.00
City of Wrens	0.24	0.00

Withdrawals by Major Industrial Groups (Mgal/d):

SIC	GW	SW
22 Textiles	1.31	0.00
32 Stone, Clay	3.27	4.19

JENKINS COUNTY

Population: 8,247
 Population served by public supply: 3,976
 Acres irrigated: 10,152
 Hydroelectric use (Mgal/d): 0



WITHDRAWALS IN MILLION GALLONS PER DAY							
	Public Supply	Domestic & Commercial	Industry & Mining	Irrigation	Livestock	Thermo-electric	TOTALS
Ground Water	0.58	0.32	0.11	1.86	0.02	0.00	2.89
Surface Water	0.00	0.00	0.00	1.10	0.13	0.00	1.23
TOTALS	0.58	0.32	0.11	2.96	0.15	0.00	4.12

Withdrawals by Major Public Suppliers (Mgal/d):

	GW	SW
City of Millen	0.57	0.00
Perkins Water Auth.	0.01	0.00

Withdrawals by Major Industrial Groups (Mgal/d):

SIC	GW	SW
23 Apparel	0.11	0.00

JOHNSON COUNTY

Population: 8,329
 Population served by public supply: 3,086
 Acres irrigated: 2,568
 Hydroelectric use (Mgal/d): 0



WITHDRAWALS IN MILLION GALLONS PER DAY							
	Public Supply	Domestic & Commercial	Industry & Mining	Irrigation	Livestock	Thermo-electric	TOTALS
Ground Water	0.27	0.40	0.00	0.39	0.02	0.00	1.08
Surface Water	0.00	0.00	0.00	0.79	0.08	0.00	0.87
TOTALS	0.27	0.40	0.00	1.18	0.10	0.00	1.95

Withdrawals by Major Public Suppliers (Mgal/d):

	GW	SW
Town of Kite	0.03	0.00
Scott Water & Sewer Auth.	0.02	0.00
City of Wrightsville	0.21	0.00

Withdrawals by Major Industrial Groups (Mgal/d):

SIC	GW	SW
None		

JONES COUNTY

Population: 20,739
 Population served by public supply: 11,000
 Acres irrigated: 77
 Hydroelectric use (Mgal/d): 0



WITHDRAWALS IN MILLION GALLONS PER DAY							
	Public Supply	Domestic & Commercial	Industry & Mining	Irrigation	Livestock	Thermo-electric	TOTALS
Ground Water	0.86	0.76	0.00	0.02	0.00	0.00	1.64
Surface Water	0.00	0.00	0.11	0.12	0.10	0.00	0.33
TOTALS	0.86	0.76	0.11	0.14	0.10	0.00	1.97

Withdrawals by Major Public Suppliers (Mgal/d):

	GW	SW
City of Gray	0.03	0.00
Haddock Water Commission	0.06	0.00
Jones Co. Water Commission	0.70	0.00

Withdrawals by Major Industrial Groups (Mgal/d):

SIC	GW	SW
20 Food	0.00	0.07
22 Textiles	0.00	0.03

LAMAR COUNTY

Population: 13,038
 Population served by public supply: 5,711
 Acres irrigated: 624
 Hydroelectric use (Mgal/d): 0



WITHDRAWALS IN MILLION GALLONS PER DAY							
	Public Supply	Domestic & Commercial	Industry & Mining	Irrigation	Livestock	Thermo-electric	TOTALS
Ground Water	0.01	0.57	0.00	0.16	0.54	0.00	1.28
Surface Water	1.51	0.00	0.00	0.08	0.66	0.00	2.25
TOTALS	1.52	0.57	0.00	0.24	1.20	0.00	3.53

Withdrawals by Major Public Suppliers (Mgal/d):

	GW	SW
City of Barnesville	0.00	1.51

Withdrawals by Major Industrial Groups (Mgal/d):

SIC	GW	SW
None		

LANIER COUNTY

Population: 5,531
 Population served by public supply: 2,647
 Acres irrigated: 7,661
 Hydroelectric use (Mgal/d): 0



WITHDRAWALS IN MILLION GALLONS PER DAY							
	Public Supply	Domestic & Commercial	Industry & Mining	Irrigation	Livestock	Thermo-electric	TOTALS
Ground Water	0.34	0.22	0.00	1.43	0.01	0.00	2.00
Surface Water	0.00	0.00	0.00	1.63	0.03	0.00	1.66
TOTALS	0.34	0.22	0.00	3.06	0.04	0.00	3.66

Withdrawals by Major Public Suppliers (Mgal/d):

	GW	SW
City of Lakeland	0.34	0.00

Withdrawals by Major Industrial Groups (Mgal/d):

SIC	GW	SW
None		

LAURENS COUNTY

Population: 39,988
 Population served by public supply: 25,906
 Acres irrigated: 8,728
 Hydroelectric use (Mgal/d): 0



WITHDRAWALS IN MILLION GALLONS PER DAY							
	Public Supply	Domestic & Commercial	Industry & Mining	Irrigation	Livestock	Thermo-electric	TOTALS
Ground Water	1.42	1.10	0.51	1.96	0.04	0.00	5.03
Surface Water	2.64	0.00	12.79	5.36	0.21	0.00	21.00
TOTALS	4.06	1.10	13.30	7.32	0.25	0.00	26.03

Withdrawals by Major Public Suppliers (Mgal/d):

	GW	SW
Town of Cadwell	0.06	0.00
Town of Dexter	0.03	0.00
City of Dublin	0.70	2.64
City of Dudley	0.06	0.00
Town of Montrose	0.02	0.00
Town of Rentz	0.04	0.00
Town of East Dublin	0.37	0.00

Withdrawals by Major Industrial Groups (Mgal/d):

	GW	SW
22 Textiles	0.51	3.74
26 Paper	0.00	9.05

LEE COUNTY

Population: 16,250
 Population served by public supply: 6,087
 Acres irrigated: 36,960
 Hydroelectric use (Mgal/d): 0



WITHDRAWALS IN MILLION GALLONS PER DAY							
	Public Supply	Domestic & Commercial	Industry & Mining	Irrigation	Livestock	Thermo-electric	TOTALS
Ground Water	0.66	0.80	0.95	14.46	0.00	0.00	16.87
Surface Water	0.00	0.00	0.00	0.61	0.11	0.00	0.72
TOTALS	0.66	0.80	0.95	15.07	0.11	0.00	17.59

Withdrawals by Major Public Suppliers (Mgal/d):

	GW	SW
City of Leesburg	0.29	0.00
City of Smithville	0.07	0.00

Withdrawals by Major Industrial Groups (Mgal/d):

	GW	SW
35 Machinery, ex. Elec.	0.95	0.00

LIBERTY COUNTY

Population: 52,745
 Population served by public supply: 43,007
 Acres irrigated: 140
 Hydroelectric use (Mgal/d): 0



WITHDRAWALS IN MILLION GALLONS PER DAY							
	Public Supply	Domestic & Commercial	Industry & Mining	Irrigation	Livestock	Thermo-electric	TOTALS
Ground Water	6.48	3.47	10.48	0.09	0.00	0.00	20.52
Surface Water	0.00	0.00	0.00	0.06	0.01	0.00	0.07
TOTALS	6.48	3.47	10.48	0.15	0.01	0.00	20.59

Withdrawals by Major Public Suppliers (Mgal/d):

	GW	SW
City of Hinesville	2.14	0.00
City of Midway	0.02	0.00
City of Walthourville	0.23	0.00

Withdrawals by Major Industrial Groups (Mgal/d):

	GW	SW
26 Paper	10.47	0.00

LINCOLN COUNTY

Population: 7,442
 Population served by public supply: 1,800
 Acres irrigated: 30
 Hydroelectric use (Mgal/d): 0



WITHDRAWALS IN MILLION GALLONS PER DAY							
	Public Supply	Domestic & Commercial	Industry & Mining	Irrigation	Livestock	Thermo-electric	TOTALS
Ground Water	0.00	0.46	0.10	0.08	0.00	0.00	0.64
Surface Water	0.27	0.00	0.00	0.00	0.07	0.00	0.34
TOTALS	0.27	0.46	0.10	0.08	0.07	0.00	0.98

Withdrawals by Major Public Suppliers (Mgal/d):

	GW	SW
City of Lincolnnton	0.00	0.26

Withdrawals by Major Industrial Groups (Mgal/d):

	GW	SW
14 Mining	0.10	0.00

LONG COUNTY

Population: 6,202
 Population served by public supply: 3,086
 Acres irrigated: 124
 Hydroelectric use (Mgal/d): 0



WITHDRAWALS IN MILLION GALLONS PER DAY							
	Public Supply	Domestic & Commercial	Industry & Mining	Irrigation	Livestock	Thermo-electric	TOTALS
Ground Water	0.22	0.23	0.00	0.01	0.00	0.00	0.46
Surface Water	0.00	0.00	0.00	0.03	0.04	0.00	0.07
TOTALS	0.22	0.23	0.00	0.04	0.04	0.00	0.53

Withdrawals by Major Public Suppliers (Mgal/d):

	GW	SW
City of Ludowici	0.14	0.00

Withdrawals by Major Industrial Groups (Mgal/d):

SIC	GW	SW
None		

LOWNDES COUNTY

Population: 75,981
 Population served by public supply: 55,338
 Acres irrigated: 6,170
 Hydroelectric use (Mgal/d): 0



WITHDRAWALS IN MILLION GALLONS PER DAY							
	Public Supply	Domestic & Commercial	Industry & Mining	Irrigation	Livestock	Thermo-electric	TOTALS
Ground Water	8.39	4.22	11.58	1.02	0.03	0.00	25.24
Surface Water	0.00	0.00	0.00	0.84	0.09	0.00	0.93
TOTALS	8.39	4.22	11.58	1.86	0.12	0.00	26.17

Withdrawals by Major Public Suppliers (Mgal/d):

	GW	SW
Town of Clyattville	0.03	0.00
City of Hahira	0.03	0.00
Town of Lake Park	0.04	0.00
Lowndes County Water System	0.18	0.00
City of Remerton	0.04	0.00
City of Valdosta	7.47	0.00

Withdrawals by Major Industrial Groups (Mgal/d):

SIC	GW	SW
24 Lumber	0.08	0.00
26 Paper	10.85	0.00
28 Chemicals	0.47	0.00
36 Electrical Machinery	0.19	0.00

LUMPKIN COUNTY

Population: 14,573
 Population served by public supply: 4,056
 Acres irrigated: 406
 Hydroelectric use (Mgal/d): 0



WITHDRAWALS IN MILLION GALLONS PER DAY							
	Public Supply	Domestic & Commercial	Industry & Mining	Irrigation	Livestock	Thermo-electric	TOTALS
Ground Water	0.01	0.84	0.00	0.04	0.00	0.00	0.89
Surface Water	0.79	0.07	1.23	0.09	0.78	0.00	2.96
TOTALS	0.80	0.91	1.23	0.13	0.78	0.00	3.85

Withdrawals by Major Public Suppliers (Mgal/d):

	GW	SW
City of Dahlonega	0.00	0.79

Withdrawals by Major Industrial Groups (Mgal/d):

	GW	SW
14 Mining	0.00	1.23

MCDUFFIE COUNTY

Population: 20,119
 Population served by public supply: 7,931
 Acres irrigated: 772
 Hydroelectric use (Mgal/d): 0



WITHDRAWALS IN MILLION GALLONS PER DAY							
	Public Supply	Domestic & Commercial	Industry & Mining	Irrigation	Livestock	Thermo-electric	TOTALS
Ground Water	0.11	1.01	0.14	0.15	0.00	0.00	1.41
Surface Water	1.44	0.00	0.00	0.48	0.07	0.00	1.99
TOTALS	1.55	1.01	0.14	0.63	0.07	0.00	3.40

Withdrawals by Major Public Suppliers (Mgal/d):

	GW	SW
Town of Dearing	0.08	0.00
City of Thomson	0.00	1.43

Withdrawals by Major Industrial Groups (Mgal/d):

	GW	SW
14 Mining	0.01	0.00
22 Textiles	0.01	0.00
24 Lumber	0.12	0.00

MCINTOSH COUNTY

Population: 8,634
 Population served by public supply: 4,271
 Acres irrigated: 0
 Hydroelectric use (Mgal/d): 0



WITHDRAWALS IN MILLION GALLONS PER DAY							
	Public Supply	Domestic & Commercial	Industry & Mining	Irrigation	Livestock	Thermo-electric	TOTALS
Ground Water	0.21	0.89	0.00	0.00	0.00	0.00	1.10
Surface Water	0.00	0.00	0.00	0.00	0.00	0.00	0.00
TOTALS	0.21	0.89	0.00	0.00	0.00	0.00	1.10

Withdrawals by Major Public Suppliers (Mgal/d):

	GW	SW
City of Darien	0.10	0.00
Hog Hammock Community	0.02	0.00

Withdrawals by Major Industrial Groups (Mgal/d):

SIC	GW	SW
None		

MACON COUNTY

Population: 13,114
 Population served by public supply: 8,588
 Acres irrigated: 16,359
 Hydroelectric use (Mgal/d): 0



WITHDRAWALS IN MILLION GALLONS PER DAY							
	Public Supply	Domestic & Commercial	Industry & Mining	Irrigation	Livestock	Thermo-electric	TOTALS
Ground Water	1.03	0.36	6.38	2.54	0.02	0.00	10.33
Surface Water	0.00	0.00	9.43	1.56	0.17	0.00	11.16
TOTALS	1.03	0.36	15.81	4.10	0.19	0.00	21.49

Withdrawals by Major Public Suppliers (Mgal/d):

	GW	SW
Town of Ideal	0.06	0.00
Town of Marshallville	0.11	0.00
City of Montezuma	0.71	0.00
City of Oglethorpe	0.16	0.00

Withdrawals by Major Industrial Groups (Mgal/d):

SIC	GW	SW
20 Food	5.48	0.00
26 Paper	0.88	9.43
28 Chemicals	0.01	0.00

MADISON COUNTY

Population: 21,050
 Population served by public supply: 3,240
 Acres irrigated: 2,590
 Hydroelectric use (Mgal/d): 0



WITHDRAWALS IN MILLION GALLONS PER DAY							
	Public Supply	Domestic & Commercial	Industry & Mining	Irrigation	Livestock	Thermo-electric	TOTALS
Ground Water	0.32	1.39	0.00	1.32	0.00	0.00	3.03
Surface Water	0.00	0.00	0.00	1.06	0.93	0.00	1.99
TOTALS	0.32	1.39	0.00	2.38	0.93	0.00	5.02

Withdrawals by Major Public Suppliers (Mgal/d):

	GW	SW
Town of Carlton	0.03	0.00
City of Colbert	0.06	0.00
Town of Comer	0.08	0.00
City of Danielsville	0.06	0.00
City of Ila	0.02	0.00

Withdrawals by Major Industrial Groups (Mgal/d):

	GW	SW
SIC		
None		

MARION COUNTY

Population: 5,590
 Population served by public supply: 2,473
 Acres irrigated: 1,343
 Hydroelectric use (Mgal/d): 0



WITHDRAWALS IN MILLION GALLONS PER DAY							
	Public Supply	Domestic & Commercial	Industry & Mining	Irrigation	Livestock	Thermo-electric	TOTALS
Ground Water	0.99	0.30	0.00	0.00	0.01	0.00	1.30
Surface Water	0.00	0.00	0.00	0.99	0.13	0.00	1.12
TOTALS	0.99	0.30	0.00	0.99	0.14	0.00	2.42

Withdrawals by Major Public Suppliers (Mgal/d):

	GW	SW
City of Buena Vista	0.99	0.00

Withdrawals by Major Industrial Groups (Mgal/d):

	GW	SW
SIC		
None		

MERIWETHER COUNTY

Population: 22,411
 Population served by public supply: 9,304
 Acres irrigated: 726
 Hydroelectric use (Mgal/d): 0



WITHDRAWALS IN MILLION GALLONS PER DAY							
	Public Supply	Domestic & Commercial	Industry & Mining	Irrigation	Livestock	Thermo-electric	TOTALS
Ground Water	0.43	1.11	0.03	0.00	0.80	0.00	2.37
Surface Water	1.02	0.00	0.00	0.29	0.93	0.00	2.24
TOTALS	1.45	1.11	0.03	0.29	1.73	0.00	4.61

Withdrawals by Major Public Suppliers (Mgal/d):

	GW	SW
City of Greenville	0.18	0.06
Lone Oak Water System	0.05	0.00
Town of Luthersville	0.04	0.00
City of Manchester	0.00	0.67
City of Warm Springs	0.10	0.00
Town of Woodbury	0.00	0.29

Withdrawals by Major Industrial Groups (Mgal/d):

	SIC	GW	SW
20 Food		0.02	0.00
24 Lumber		0.01	0.00

MILLER COUNTY

Population: 6,280
 Population served by public supply: 2,400
 Acres irrigated: 50,085
 Hydroelectric use (Mgal/d): 0



WITHDRAWALS IN MILLION GALLONS PER DAY							
	Public Supply	Domestic & Commercial	Industry & Mining	Irrigation	Livestock	Thermo-electric	TOTALS
Ground Water	0.30	0.29	0.00	12.93	0.00	0.00	13.52
Surface Water	0.00	0.00	0.00	0.00	0.18	0.00	0.18
TOTALS	0.30	0.29	0.00	12.93	0.18	0.00	13.70

Withdrawals by Major Public Suppliers (Mgal/d):

	GW	SW
City of Colquitt	0.30	0.00

Withdrawals by Major Industrial Groups (Mgal/d):

	SIC	GW	SW
	None		

MITCHELL COUNTY

Population: 20,275
 Population served by public supply: 11,761
 Acres irrigated: 60,873
 Hydroelectric use (Mgal/d): 0



WITHDRAWALS IN MILLION GALLONS PER DAY							
	Public Supply	Domestic & Commercial	Industry & Mining	Irrigation	Livestock	Thermo-electric	TOTALS
Ground Water	3.00	0.66	0.00	23.34	0.00	0.00	27.00
Surface Water	0.00	0.00	0.00	5.05	0.26	0.00	5.31
TOTALS	3.00	0.66	0.00	28.39	0.26	0.00	32.31

Withdrawals by Major Public Suppliers (Mgal/d):

	GW	SW
City of Camilla	2.18	0.00
Hinsonton Water Assoc.	0.01	0.00
City of Pelham	0.69	0.00
Town of Sale City	0.05	0.00
City of Baconton	0.05	0.00

Withdrawals by Major Industrial Groups (Mgal/d):

SIC	GW	SW
None		

MONROE COUNTY

Population: 17,113
 Population served by public supply: 6,754
 Acres irrigated: 547
 Hydroelectric use (Mgal/d): 0



WITHDRAWALS IN MILLION GALLONS PER DAY							
	Public Supply	Domestic & Commercial	Industry & Mining	Irrigation	Livestock	Thermo-electric	TOTALS
Ground Water	0.04	0.98	0.00	0.00	2.10	0.02	3.14
Surface Water	1.20	0.00	0.00	0.17	2.23	10.61	14.21
TOTALS	1.24	0.98	0.00	0.17	4.33	10.63	17.35

Withdrawals by Major Public Suppliers (Mgal/d):

	GW	SW
City of Culloden	0.02	0.00
City of Forsyth	0.00	1.20

Withdrawals by Major Industrial Groups (Mgal/d):

SIC	GW	SW
None		

MONTGOMERY COUNTY

Population: 7,163
 Population served by public supply: 3,427
 Acres irrigated: 3,000
 Hydroelectric use (Mgal/d): 0



WITHDRAWALS IN MILLION GALLONS PER DAY							
	Public Supply	Domestic & Commercial	Industry & Mining	Irrigation	Livestock	Thermo-electric	TOTALS
Ground Water	0.33	0.32	0.00	0.35	0.01	0.00	1.01
Surface Water	0.00	0.00	0.00	0.64	0.06	0.00	0.70
TOTALS	0.33	0.32	0.00	0.99	0.07	0.00	1.71

Withdrawals by Major Public Suppliers (Mgal/d):

	GW	SW
Town of Ailey	0.04	0.00
Town of Alston	0.01	0.00
Charlotte Water Assoc.	0.01	0.00
City of Mt Vernon	0.19	0.00
Village of Tarrytown	0.01	0.00
Town of Uvalda	0.05	0.00

Withdrawals by Major Industrial Groups (Mgal/d):

SIC	GW	SW
None		

MORGAN COUNTY

Population: 12,883
 Population served by public supply: 2,421
 Acres irrigated: 2,200
 Hydroelectric use (Mgal/d): 0



WITHDRAWALS IN MILLION GALLONS PER DAY							
	Public Supply	Domestic & Commercial	Industry & Mining	Irrigation	Livestock	Thermo-electric	TOTALS
Ground Water	0.20	0.85	0.00	0.00	0.01	0.00	1.06
Surface Water	0.94	0.00	0.00	0.24	0.35	0.00	1.53
TOTALS	1.14	0.85	0.00	0.24	0.36	0.00	2.59

Withdrawals by Major Public Suppliers (Mgal/d):

	GW	SW
Town of Bostwick	0.00	0.00
Town of Buckhead	0.02	0.00
City of Madison	0.08	0.94
City of Rutledge	0.07	0.00

Withdrawals by Major Industrial Groups (Mgal/d):

SIC	GW	SW
None		

MURRAY COUNTY

Population: 26,147
 Population served by public supply: 9,329
 Acres irrigated: 855
 Hydroelectric use (Mgal/d): 901



WITHDRAWALS IN MILLION GALLONS PER DAY							
	Public Supply	Domestic & Commercial	Industry & Mining	Irrigation	Livestock	Thermo-electric	TOTALS
Ground Water	0.49	1.29	0.00	0.00	0.01	0.00	1.79
Surface Water	1.72	0.00	0.00	0.33	0.15	0.00	2.20
TOTALS	2.21	1.29	0.00	0.33	0.16	0.00	3.99

Withdrawals by Major Public Suppliers (Mgal/d):

	GW	SW
City of Chatsworth	1.47	1.72

Withdrawals by Major Industrial Groups (Mgal/d):

SIC	GW	SW
None		

MUSCOGEE COUNTY

Population: 179,278
 Population served by public supply: 179,278
 Acres irrigated: 425
 Hydroelectric use (Mgal/d): 7,712



WITHDRAWALS IN MILLION GALLONS PER DAY							
	Public Supply	Domestic & Commercial	Industry & Mining	Irrigation	Livestock	Thermo-electric	TOTALS
Ground Water	0.10	0.01	0.00	0.00	0.00	0.00	0.11
Surface Water	35.13	0.00	0.05	0.81	0.02	0.00	36.01
TOTALS	35.23	0.01	0.05	0.81	0.02	0.00	36.12

Withdrawals by Major Public Suppliers (Mgal/d):

	GW	SW
City of Columbus	0.00	35.13

Withdrawals by Major Industrial Groups (Mgal/d):

SIC	GW	SW
None		

NEWTON COUNTY

Population: 41,808
 Population served by public supply: 22,109
 Acres irrigated: 184
 Hydroelectric use (Mgal/d): 78



WITHDRAWALS IN MILLION GALLONS PER DAY							
	Public Supply	Domestic & Commercial	Industry & Mining	Irrigation	Livestock	Thermo-electric	TOTALS
Ground Water	1.27	1.57	0.09	0.00	0.01	0.00	2.94
Surface Water	3.41	0.00	0.05	0.25	0.13	0.00	3.84
TOTALS	4.68	1.57	0.14	0.25	0.14	0.00	6.78

Withdrawals by Major Public Suppliers (Mgal/d):

	GW	SW
Almon Community	0.04	0.00
City of Covington	0.00	3.37
Town of Mansfield	0.02	0.00
Town of Newborn	0.04	0.00
Town of Porterdale	0.00	0.04

Withdrawals by Major Industrial Groups (Mgal/d):

SIC	GW	SW
22 Textiles	0.00	0.05
28 Chemicals	0.09	0.00

OCONEE COUNTY

Population: 17,618
 Population served by public supply: 11,283
 Acres irrigated: 855
 Hydroelectric use (Mgal/d): 213



WITHDRAWALS IN MILLION GALLONS PER DAY							
	Public Supply	Domestic & Commercial	Industry & Mining	Irrigation	Livestock	Thermo-electric	TOTALS
Ground Water	1.09	0.50	0.00	0.10	0.00	0.00	1.69
Surface Water	0.00	0.00	0.00	0.06	0.46	0.00	0.52
TOTALS	1.09	0.50	0.00	0.16	0.46	0.00	2.21

Withdrawals by Major Public Suppliers (Mgal/d):

	GW	SW
Oconee County Public Utility Auth.	0.12	0.00
City of Watkinsville	0.51	0.00

Withdrawals by Major Industrial Groups (Mgal/d):

SIC	GW	SW
None		

OGLETHORPE COUNTY

Population: 9,763
 Population served by public supply: 1,722
 Acres irrigated: 56
 Hydroelectric use (Mgal/d): 0



WITHDRAWALS IN MILLION GALLONS PER DAY							
	Public Supply	Domestic & Commercial	Industry & Mining	Irrigation	Livestock	Thermo-electric	TOTALS
Ground Water	0.07	0.60	0.00	0.00	0.00	0.00	0.67
Surface Water	0.15	0.00	0.00	0.11	0.44	0.00	0.70
TOTALS	0.22	0.60	0.00	0.11	0.44	0.00	1.37

Withdrawals by Major Public Suppliers (Mgal/d):

	GW	SW
City of Arnoldsville	0.01	0.00
City of Crawford	0.00	0.14
City of Lexington	0.04	0.00
Town of Maxeys	0.02	0.00

Withdrawals by Major Industrial Groups (Mgal/d):

	GW	SW
SIC		
None		

PAULDING COUNTY

Population: 41,611
 Population served by public supply: 39,530
 Acres irrigated: 121
 Hydroelectric use (Mgal/d): 0



WITHDRAWALS IN MILLION GALLONS PER DAY							
	Public Supply	Domestic & Commercial	Industry & Mining	Irrigation	Livestock	Thermo-electric	TOTALS
Ground Water	0.11	1.26	0.00	0.32	0.00	0.00	1.69
Surface Water	2.70	0.00	0.00	0.05	0.15	0.00	2.90
TOTALS	2.81	1.26	0.00	0.37	0.15	0.00	4.59

Withdrawals by Major Public Suppliers (Mgal/d):

	GW	SW
City of Dallas	0.00	0.30
City of Hiram	0.11	0.00

Withdrawals by Major Industrial Groups (Mgal/d):

	GW	SW
SIC		
None		

PEACH COUNTY

Population: 21,189
 Population served by public supply: 12,359
 Acres irrigated: 9,133
 Hydroelectric use (Mgal/d): 0



WITHDRAWALS IN MILLION GALLONS PER DAY							
	Public Supply	Domestic & Commercial	Industry & Mining	Irrigation	Livestock	Thermo-electric	TOTALS
Ground Water	2.40	0.68	0.00	3.06	0.01	0.00	6.15
Surface Water	0.00	0.00	0.00	0.79	0.03	0.00	0.82
TOTALS	2.40	0.68	0.00	3.85	0.04	0.00	6.97

Withdrawals by Major Public Suppliers (Mgal/d):

	GW	SW
City of Byron	0.30	0.00
City of Fort Valley	2.07	0.00

Withdrawals by Major Industrial Groups (Mgal/d):

SIC	GW	SW
None		

PICKENS COUNTY

Population: 14,432
 Population served by public supply: 8,512
 Acres irrigated: 24
 Hydroelectric use (Mgal/d): 0



WITHDRAWALS IN MILLION GALLONS PER DAY							
	Public Supply	Domestic & Commercial	Industry & Mining	Irrigation	Livestock	Thermo-electric	TOTALS
Ground Water	0.10	0.49	0.00	0.02	0.00	0.00	0.61
Surface Water	1.14	0.11	0.00	0.03	0.32	0.00	1.60
TOTALS	1.24	0.60	0.00	0.05	0.32	0.00	2.21

Withdrawals by Major Public Suppliers (Mgal/d):

	GW	SW
City of Jasper	0.00	0.99
City of Nelson	0.06	0.00
Pickens County Water Auth.	0.00	0.15

Withdrawals by Major Industrial Groups (Mgal/d):

SIC	GW	SW
None		

PIERCE COUNTY

Population: 13,328
 Population served by public supply: 4,794
 Acres irrigated: 11,415
 Hydroelectric use (Mgal/d): 0



WITHDRAWALS IN MILLION GALLONS PER DAY							
	Public Supply	Domestic & Commercial	Industry & Mining	Irrigation	Livestock	Thermo-electric	TOTALS
Ground Water	0.54	0.65	0.52	0.37	0.02	0.00	2.10
Surface Water	0.00	0.00	0.00	1.75	0.10	0.00	1.85
TOTALS	0.54	0.65	0.52	2.12	0.12	0.00	3.95

Withdrawals by Major Public Suppliers (Mgal/d):

	GW	SW
City of Blackshear	0.47	0.00
City of Patterson	0.03	0.00

Withdrawals by Major Industrial Groups (Mgal/d):

SIC	GW	SW
24 Lumber	0.52	0.00

PIKE COUNTY

Population: 10,224
 Population served by public supply: 2,665
 Acres irrigated: 616
 Hydroelectric use (Mgal/d): 0



WITHDRAWALS IN MILLION GALLONS PER DAY							
	Public Supply	Domestic & Commercial	Industry & Mining	Irrigation	Livestock	Thermo-electric	TOTALS
Ground Water	0.33	0.60	0.00	0.18	0.10	0.00	1.21
Surface Water	0.17	0.00	0.00	0.11	0.20	0.00	0.48
TOTALS	0.50	0.60	0.00	0.29	0.30	0.00	1.69

Withdrawals by Major Public Suppliers (Mgal/d):

	GW	SW
Town of Concord	0.26	0.00
City of Meansville	0.02	0.00
City of Molena	0.02	0.00
Town of Williamson	0.02	0.00
City of Zebulon	0.00	0.17

Withdrawals by Major Industrial Groups (Mgal/d):

SIC	GW	SW
None		

POLK COUNTY

Population: 33,815
 Population served by public supply: 24,581
 Acres irrigated: 29
 Hydroelectric use (Mgal/d): 0



WITHDRAWALS IN MILLION GALLONS PER DAY							
	Public Supply	Domestic & Commercial	Industry & Mining	Irrigation	Livestock	Thermo-electric	TOTALS
Ground Water	0.52	0.54	1.90	0.02	0.01	0.00	2.99
Surface Water	0.90	0.00	0.00	0.01	0.12	0.00	1.03
TOTALS	1.42	0.54	1.90	0.03	0.13	0.00	4.02

Withdrawals by Major Public Suppliers (Mgal/d):

	GW	SW
City of Cedartown	0.00	0.00
Polk County Water Auth.	0.41	0.00
City of Rockmart	0.00	0.90

Withdrawals by Major Industrial Groups (Mgal/d):

SIC	GW	SW
28 Chemicals	1.83	0.00
30 Rubber	0.07	0.00

PULASKI COUNTY

Population: 8,108
 Population served by public supply: 5,146
 Acres irrigated: 27,084
 Hydroelectric use (Mgal/d): 0



WITHDRAWALS IN MILLION GALLONS PER DAY							
	Public Supply	Domestic & Commercial	Industry & Mining	Irrigation	Livestock	Thermo-electric	TOTALS
Ground Water	0.68	0.23	0.00	7.42	0.01	0.00	8.34
Surface Water	0.00	0.00	0.00	3.61	0.06	0.00	3.67
TOTALS	0.68	0.23	0.00	11.03	0.07	0.00	12.01

Withdrawals by Major Public Suppliers (Mgal/d):

	GW	SW
Hartford Water Auth.	0.05	0.00
City of Hawkinsville	0.62	0.00

Withdrawals by Major Industrial Groups (Mgal/d):

SIC	GW	SW
None		

PUTNAM COUNTY

Population: 14,137
 Population served by public supply: 6,668
 Acres irrigated: 498
 Hydroelectric use (Mgal/d): 1,320



WITHDRAWALS IN MILLION GALLONS PER DAY							
	Public Supply	Domestic & Commercial	Industry & Mining	Irrigation	Livestock	Thermo-electric	TOTALS
Ground Water	0.14	0.62	0.01	0.04	0.01	0.00	0.82
Surface Water	0.85	0.00	0.00	0.12	0.18	1046.60	1047.75
TOTALS	0.99	0.62	0.01	0.16	0.19	1046.60	1048.57

Withdrawals by Major Public Suppliers (Mgal/d):

	GW	SW
City of Eatonton	0.00	0.85

Withdrawals by Major Industrial Groups (Mgal/d):

SIC	GW	SW
24 Lumber	0.01	0.00

QUITMAN COUNTY

Population: 2,209
 Population served by public supply: 1,344
 Acres irrigated: 1,030
 Hydroelectric use (Mgal/d): 0



WITHDRAWALS IN MILLION GALLONS PER DAY							
	Public Supply	Domestic & Commercial	Industry & Mining	Irrigation	Livestock	Thermo-electric	TOTALS
Ground Water	0.13	0.08	0.00	0.00	0.00	0.00	0.21
Surface Water	0.00	0.00	0.00	0.15	0.01	0.00	0.16
TOTALS	0.13	0.08	0.00	0.15	0.01	0.00	0.37

Withdrawals by Major Public Suppliers (Mgal/d):

	GW	SW
Town of Georgetown	0.12	0.00

Withdrawals by Major Industrial Groups (Mgal/d):

SIC	GW	SW
None		

RABUN COUNTY

Population: 11,648
 Population served by public supply: 6,953
 Acres irrigated: 385
 Hydroelectric use (Mgal/d): 1,232



WITHDRAWALS IN MILLION GALLONS PER DAY							
	Public Supply	Domestic & Commercial	Industry & Mining	Irrigation	Livestock	Thermo-electric	TOTALS
Ground Water	0.13	0.57	0.01	0.01	0.00	0.00	0.72
Surface Water	0.81	0.03	1.86	0.05	0.08	0.00	2.83
TOTALS	0.94	0.60	1.87	0.06	0.08	0.00	3.55

Withdrawals by Major Public Suppliers (Mgal/d):

	GW	SW
City of Clayton	0.00	0.81
Town of Tallulah Falls	0.01	0.00
City of Sky Valley Resort	0.16	0.00

Withdrawals by Major Industrial Groups (Mgal/d):

	GW	SW
22 Textiles	0.01	1.86
36 Electrical Machinery	0.01	0.00

RANDOLPH COUNTY

Population: 8,023
 Population served by public supply: 5,256
 Acres irrigated: 27,884
 Hydroelectric use (Mgal/d): 0



WITHDRAWALS IN MILLION GALLONS PER DAY							
	Public Supply	Domestic & Commercial	Industry & Mining	Irrigation	Livestock	Thermo-electric	TOTALS
Ground Water	0.76	0.27	0.00	2.59	0.02	0.00	3.64
Surface Water	0.00	0.00	0.00	3.80	0.08	0.00	3.88
TOTALS	0.76	0.27	0.00	6.39	0.10	0.00	7.52

Withdrawals by Major Public Suppliers (Mgal/d):

	GW	SW
City of Coleman	0.05	0.00
City of Cuthbert	0.44	0.00
City of Shellman	0.11	0.00

Withdrawals by Major Industrial Groups (Mgal/d):

	GW	SW
SIC		
None		

RICHMOND COUNTY

Population: 189,719
 Population served by public supply: 184,649
 Acres irrigated: 1,390
 Hydroelectric use (Mgal/d): 902



WITHDRAWALS IN MILLION GALLONS PER DAY							
	Public Supply	Domestic & Commercial	Industry & Mining	Irrigation	Livestock	Thermo-electric	TOTALS
Ground Water	13.18	0.87	2.55	0.96	0.02	0.00	17.58
Surface Water	25.45	1.75	63.38	0.24	0.04	0.00	90.86
TOTALS	38.63	2.62	65.93	1.20	0.06	0.00	108.44

Withdrawals by Major Public Suppliers (Mgal/d):

	GW	SW
City of Augusta	0.00	25.45
Town of Blythe	0.03	0.00
Town of Hephzibah	0.26	0.00
Richmond County Water System	11.78	0.00

Withdrawals by Major Industrial Groups (Mgal/d):

SIC	GW	SW
14 Mining	0.02	0.00
22 Textiles	0.74	0.00
26 Paper	0.00	50.96
28 Chemicals	1.79	12.42

ROCKDALE COUNTY

Population: 54,091
 Population served by public supply: 53,550
 Acres irrigated: 122
 Hydroelectric use (Mgal/d): 30



WITHDRAWALS IN MILLION GALLONS PER DAY							
	Public Supply	Domestic & Commercial	Industry & Mining	Irrigation	Livestock	Thermo-electric	TOTALS
Ground Water	4.80	0.05	0.00	0.12	0.00	0.00	4.97
Surface Water	1.66	0.00	0.00	0.12	0.02	0.00	1.80
TOTALS	6.46	0.05	0.00	0.24	0.02	0.00	6.77

Withdrawals by Major Public Suppliers (Mgal/d):

	GW	SW
City of Conyers	0.28	1.66
Milstead Water System	0.11	0.00

Withdrawals by Major Industrial Groups (Mgal/d):

SIC	GW	SW
None		

SCHLEY COUNTY

Population: 3,588
 Population served by public supply: 1,400
 Acres irrigated: 2,138
 Hydroelectric use (Mgal/d): 0



WITHDRAWALS IN MILLION GALLONS PER DAY							
	Public Supply	Domestic & Commercial	Industry & Mining	Irrigation	Livestock	Thermo-electric	TOTALS
Ground Water	0.26	0.16	0.00	0.06	0.01	0.00	0.49
Surface Water	0.00	0.00	0.00	0.82	0.04	0.00	0.86
TOTALS	0.26	0.16	0.00	0.88	0.05	0.00	1.35

Withdrawals by Major Public Suppliers (Mgal/d):

	GW	SW
City of Ellaville	0.90	0.00

Withdrawals by Major Industrial Groups (Mgal/d):

SIC	GW	SW
None		

SCREVEN COUNTY

Population: 13,842
 Population served by public supply: 4,839
 Acres irrigated: 23,000
 Hydroelectric use (Mgal/d): 0



WITHDRAWALS IN MILLION GALLONS PER DAY							
	Public Supply	Domestic & Commercial	Industry & Mining	Irrigation	Livestock	Thermo-electric	TOTALS
Ground Water	1.07	0.74	2.30	3.96	0.04	0.00	8.11
Surface Water	0.00	0.00	0.00	2.72	0.16	0.00	2.88
TOTALS	1.07	0.74	2.30	6.68	0.20	0.00	10.99

Withdrawals by Major Public Suppliers (Mgal/d):

	GW	SW
City of Hiltonia	2.24	0.00
Town of Newington	0.05	0.00
City of Oliver	0.03	0.00
City of Sylvania	1.95	0.00

Withdrawals by Major Industrial Groups (Mgal/d):

SIC	GW	SW
22 Textiles	2.30	0.00

SEMINOLE COUNTY

Population: 9,010
 Population served by public supply: 3,854
 Acres irrigated: 54,002
 Hydroelectric use (Mgal/d): 0



WITHDRAWALS IN MILLION GALLONS PER DAY							
	Public Supply	Domestic & Commercial	Industry & Mining	Irrigation	Livestock	Thermo-electric	TOTALS
Ground Water	0.58	0.61	0.00	20.45	0.07	0.00	21.71
Surface Water	0.00	0.00	0.00	2.56	0.03	0.00	2.59
TOTALS	0.58	0.61	0.00	23.01	0.10	0.00	24.30

Withdrawals by Major Public Suppliers (Mgal/d):

	GW	SW
City of Donalsonville	0.47	0.00
Town of Iron City	0.07	0.00

Withdrawals by Major Industrial Groups (Mgal/d):

	SIC
	None

SPALDING COUNTY

Population: 54,457
 Population served by public supply: 39,898
 Acres irrigated: 700
 Hydroelectric use (Mgal/d): 0



WITHDRAWALS IN MILLION GALLONS PER DAY							
	Public Supply	Domestic & Commercial	Industry & Mining	Irrigation	Livestock	Thermo-electric	TOTALS
Ground Water	0.08	1.09	0.00	0.00	0.00	0.00	1.17
Surface Water	8.36	0.00	0.00	0.66	0.08	0.00	9.10
TOTALS	8.44	1.09	0.00	0.66	0.08	0.00	10.27

Withdrawals by Major Public Suppliers (Mgal/d):

	GW	SW
City of Griffin	0.00	6.97
Village of Orchard Hill	0.01	0.00

Withdrawals by Major Industrial Groups (Mgal/d):

	SIC
	None

STEPHENS COUNTY

Population: 23,257
 Population served by public supply: 20,177
 Acres irrigated: 113
 Hydroelectric use (Mgal/d): 957



WITHDRAWALS IN MILLION GALLONS PER DAY							
	Public Supply	Domestic & Commercial	Industry & Mining	Irrigation	Livestock	Thermo-electric	TOTALS
Ground Water	0.16	0.31	0.00	0.07	0.00	0.00	0.54
Surface Water	3.97	0.00	0.00	0.04	0.22	0.00	4.23
TOTALS	4.13	0.31	0.00	0.11	0.22	0.00	4.77

Withdrawals by Major Public Suppliers (Mgal/d):

	GW	SW
Town of Martin	0.09	0.00
City of Toccoa	0.00	3.96

Withdrawals by Major Industrial Groups (Mgal/d):

	SIC
	None

STEWART COUNTY

Population: 5,654
 Population served by public supply: 3,708
 Acres irrigated: 1,720
 Hydroelectric use (Mgal/d): 0



WITHDRAWALS IN MILLION GALLONS PER DAY							
	Public Supply	Domestic & Commercial	Industry & Mining	Irrigation	Livestock	Thermo-electric	TOTALS
Ground Water	0.34	0.17	0.00	0.00	0.01	0.00	0.52
Surface Water	0.00	0.00	0.00	0.98	0.06	0.00	1.04
TOTALS	0.34	0.17	0.00	0.98	0.07	0.00	1.56

Withdrawals by Major Public Suppliers (Mgal/d):

	GW	SW
City of Lumpkin	0.21	0.00
City of Omaha	0.01	0.00

Withdrawals by Major Industrial Groups (Mgal/d):

	SIC
	None

SUMTER COUNTY

Population: 30,228
 Population served by public supply: 19,035
 Acres irrigated: 41,611
 Hydroelectric use (Mgal/d): 0



WITHDRAWALS IN MILLION GALLONS PER DAY							
	Public Supply	Domestic & Commercial	Industry & Mining	Irrigation	Livestock	Thermo-electric	TOTALS
Ground Water	4.17	0.87	0.00	3.57	0.04	0.00	8.65
Surface Water	0.00	0.00	0.00	4.94	0.19	0.00	5.13
TOTALS	4.17	0.87	0.00	8.51	0.23	0.00	13.78

Withdrawals by Major Public Suppliers (Mgal/d):

	GW	SW
Village of Andersonville	0.14	0.00
City of Americus	3.72	0.00
Village of Desoto	0.04	0.00
Village of Leslie	0.05	0.00
City of Plains	0.14	0.00

Withdrawals by Major Industrial Groups (Mgal/d):

SIC	GW	SW
None		

TALBOT COUNTY

Population: 6,524
 Population served by public supply: 2,087
 Acres irrigated: 323
 Hydroelectric use (Mgal/d): 0



WITHDRAWALS IN MILLION GALLONS PER DAY							
	Public Supply	Domestic & Commercial	Industry & Mining	Irrigation	Livestock	Thermo-electric	TOTALS
Ground Water	0.20	0.33	0.00	0.01	1.14	0.00	1.68
Surface Water	0.00	0.00	0.00	0.07	1.19	0.00	1.26
TOTALS	0.20	0.33	0.00	0.08	2.33	0.00	2.94

Withdrawals by Major Public Suppliers (Mgal/d):

	GW	SW
Town of Geneva	0.03	0.00
Town of Junction City	0.01	0.00
City of Talbotton	0.08	0.00

Withdrawals by Major Industrial Groups (Mgal/d):

SIC	GW	SW
None		

TALIAFERRO COUNTY

Population: 1,915
 Population served by public supply: 467
 Acres irrigated: 0
 Hydroelectric use (Mgal/d): 0



WITHDRAWALS IN MILLION GALLONS PER DAY							
	Public Supply	Domestic & Commercial	Industry & Mining	Irrigation	Livestock	Thermo-electric	TOTALS
Ground Water	0.06	0.14	0.00	0.00	0.00	0.00	0.20
Surface Water	0.00	0.00	0.00	0.00	0.04	0.00	0.04
TOTALS	0.06	0.14	0.00	0.00	0.04	0.00	0.24

Withdrawals by Major Public Suppliers (Mgal/d):

	GW	SW
City of Crawfordville	0.06	0.00

Withdrawals by Major Industrial Groups (Mgal/d):

SIC	GW	SW
None		

TATTNALL COUNTY

Population: 17,722
 Population served by public supply: 9,097
 Acres irrigated: 8,906
 Hydroelectric use (Mgal/d): 0



WITHDRAWALS IN MILLION GALLONS PER DAY							
	Public Supply	Domestic & Commercial	Industry & Mining	Irrigation	Livestock	Thermo-electric	TOTALS
Ground Water	1.05	1.72	0.00	0.71	0.03	0.00	3.51
Surface Water	0.00	0.00	0.00	1.73	0.20	0.00	1.93
TOTALS	1.05	1.72	0.00	2.44	0.23	0.00	5.44

Withdrawals by Major Public Suppliers (Mgal/d):

	GW	SW
City of Cobbtown	0.07	0.00
City of Collins	0.06	0.00
City of Glennville	0.49	0.00
City of Manassas	0.02	0.00
City of Reidsville	0.40	0.00

Withdrawals by Major Industrial Groups (Mgal/d):

SIC	GW	SW
None		

TAYLOR COUNTY

Population: 7,642
 Population served by public supply: 4,180
 Acres irrigated: 2,130
 Hydroelectric use (Mgal/d): 0



WITHDRAWALS IN MILLION GALLONS PER DAY							
	Public Supply	Domestic & Commercial	Industry & Mining	Irrigation	Livestock	Thermo-electric	TOTALS
Ground Water	0.45	0.26	0.00	0.18	0.06	0.00	0.95
Surface Water	0.00	0.00	0.00	0.51	0.14	0.00	0.65
TOTALS	0.45	0.26	0.00	0.69	0.20	0.00	1.60

Withdrawals by Major Public Suppliers (Mgal/d):

	GW	SW
Town of Reynolds	0.45	0.00

Withdrawals by Major Industrial Groups (Mgal/d):

	SIC	GW	SW
	None		

TELFAIR COUNTY

Population: 11,000
 Population served by public supply: 7,562
 Acres irrigated: 14,550
 Hydroelectric use (Mgal/d): 0



WITHDRAWALS IN MILLION GALLONS PER DAY							
	Public Supply	Domestic & Commercial	Industry & Mining	Irrigation	Livestock	Thermo-electric	TOTALS
Ground Water	1.72	0.26	0.05	1.95	0.02	0.00	4.00
Surface Water	0.00	0.00	0.00	1.45	0.12	0.00	1.57
TOTALS	1.72	0.26	0.05	3.40	0.14	0.00	5.57

Withdrawals by Major Public Suppliers (Mgal/d):

	GW	SW
Town of Jacksonville	0.03	0.00
City of Lumber City	0.90	0.00
City of McRae	0.20	0.00
Town of Milan	0.41	0.00
City of Scotland	0.18	0.00

Withdrawals by Major Industrial Groups (Mgal/d):

	SIC	GW	SW
	35 Machinery, ex. Elec.	0.05	0.00

TERRELL COUNTY

Population: 10,653
 Population served by public supply: 6,178
 Acres irrigated: 15,957
 Hydroelectric use (Mgal/d): 0



WITHDRAWALS IN MILLION GALLONS PER DAY							
	Public Supply	Domestic & Commercial	Industry & Mining	Irrigation	Livestock	Thermo-electric	TOTALS
Ground Water	1.60	0.35	0.00	1.43	0.01	0.00	3.39
Surface Water	0.00	0.00	0.00	3.34	0.04	0.00	3.38
TOTALS	1.60	0.35	0.00	4.77	0.05	0.00	6.77

Withdrawals by Major Public Suppliers (Mgal/d):

	GW	SW
Town of Bronwood	0.05	0.00
City of Dawson	2.23	0.00
Town of Parrott	0.04	0.00
Town of Sasser	0.08	0.00

Withdrawals by Major Industrial Groups (Mgal/d):

SIC	GW	SW
None		

THOMAS COUNTY

Population: 38,986
 Population served by public supply: 30,964
 Acres irrigated: 700
 Hydroelectric use (Mgal/d): 0



WITHDRAWALS IN MILLION GALLONS PER DAY							
	Public Supply	Domestic & Commercial	Industry & Mining	Irrigation	Livestock	Thermo-electric	TOTALS
Ground Water	5.23	0.61	0.35	0.19	0.03	0.00	6.41
Surface Water	0.00	0.00	0.00	0.10	0.16	0.00	0.26
TOTALS	5.23	0.61	0.35	0.29	0.19	0.00	6.67

Withdrawals by Major Public Suppliers (Mgal/d):

	GW	SW
City of Boston	0.11	0.00
Town of Barwick	0.61	0.00
City of Coolidge	0.11	0.00
City of Meigs	0.16	0.00
Town of Ochlocknee	0.07	0.00
City of Pavo	0.08	0.00
City of Thomasville	3.99	0.00

Withdrawals by Major Industrial Groups (Mgal/d):

SIC	GW	SW
20 Food	0.12	0.00
28 Chemicals	0.13	0.00
32 Stone, Clay	0.10	0.00

TIFT COUNTY

Population: 34,998
 Population served by public supply: 33,425
 Acres irrigated: 47,375
 Hydroelectric use (Mgal/d): 0



WITHDRAWALS IN MILLION GALLONS PER DAY							
	Public Supply	Domestic & Commercial	Industry & Mining	Irrigation	Livestock	Thermo-electric	TOTALS
Ground Water	6.20	0.16	0.00	6.06	0.02	0.00	12.44
Surface Water	0.00	0.00	0.00	9.61	0.16	0.00	9.77
TOTALS	6.20	0.16	0.00	15.67	0.18	0.00	22.21

Withdrawals by Major Public Suppliers (Mgal/d):

	GW	SW
City of Omega	0.07	0.00
Tift County Water System	0.19	0.00
City of Tifton	5.73	0.00
Town of Ty Ty	0.08	0.00

Withdrawals by Major Industrial Groups (Mgal/d):

SIC	GW	SW
None		

TOOMBS COUNTY

Population: 24,072
 Population served by public supply: 16,674
 Acres irrigated: 10,284
 Hydroelectric use (Mgal/d): 0



WITHDRAWALS IN MILLION GALLONS PER DAY							
	Public Supply	Domestic & Commercial	Industry & Mining	Irrigation	Livestock	Thermo-electric	TOTALS
Ground Water	2.50	0.56	0.00	0.81	0.02	0.00	3.89
Surface Water	0.00	0.00	0.00	2.15	0.12	0.00	2.27
TOTALS	2.50	0.56	0.00	2.96	0.14	0.00	6.16

Withdrawals by Major Public Suppliers (Mgal/d):

	GW	SW
City of Lyons	0.56	0.00
City of Santa Claus	0.01	0.00
City of Vidalia	1.87	0.00

Withdrawals by Major Industrial Groups (Mgal/d):

SIC	GW	SW
None		

TOWNS COUNTY

Population: 6,754
 Population served by public supply: 3,671
 Acres irrigated: 0
 Hydroelectric use (Mgal/d): 0



WITHDRAWALS IN MILLION GALLONS PER DAY							
	Public Supply	Domestic & Commercial	Industry & Mining	Irrigation	Livestock	Thermo-electric	TOTALS
Ground Water	0.37	0.29	0.00	0.00	0.00	0.00	0.66
Surface Water	0.00	0.00	0.00	0.00	0.07	0.00	0.07
TOTALS	0.37	0.29	0.00	0.00	0.07	0.00	0.73

Withdrawals by Major Public Suppliers (Mgal/d):

	GW	SW
Town of Hiawassee	0.22	0.00
Towns County Water System	0.08	0.00
City of Young Harris	0.05	0.00

Withdrawals by Major Industrial Groups (Mgal/d):

SIC	GW	SW
None		

TREUTLEN COUNTY

Population: 5,994
 Population served by public supply: 3,000
 Acres irrigated: 500
 Hydroelectric use (Mgal/d): 0



WITHDRAWALS IN MILLION GALLONS PER DAY							
	Public Supply	Domestic & Commercial	Industry & Mining	Irrigation	Livestock	Thermo-electric	TOTALS
Ground Water	0.43	0.44	0.00	0.00	0.01	0.00	0.88
Surface Water	0.00	0.00	0.00	0.07	0.03	0.00	0.10
TOTALS	0.43	0.44	0.00	0.07	0.04	0.00	0.98

Withdrawals by Major Public Suppliers (Mgal/d):

	GW	SW
City of Soperton	0.43	0.00

Withdrawals by Major Industrial Groups (Mgal/d):

SIC	GW	SW
None		

TROUP COUNTY

Population: 55,536
 Population served by public supply: 43,733
 Acres irrigated: 256
 Hydroelectric use (Mgal/d): 4,028



WITHDRAWALS IN MILLION GALLONS PER DAY							
	Public Supply	Domestic & Commercial	Industry & Mining	Irrigation	Livestock	Thermo-electric	TOTALS
Ground Water	0.02	1.05	0.05	0.19	0.00	0.00	1.31
Surface Water	10.84	0.00	1.00	0.01	0.11	0.00	11.96
TOTALS	10.86	1.05	1.05	0.20	0.11	0.00	13.27

Withdrawals by Major Public Suppliers (Mgal/d):

	GW	SW
City of Hogansville	0.00	0.46
City of Lagrange	0.00	9.68
Mountville Water Assoc.	0.02	0.00
City of West Point	0.00	0.70

Withdrawals by Major Industrial Groups (Mgal/d):

	GW	SW
22 Textiles	0.03	1.00
30 Rubber	0.02	0.00

TURNER COUNTY

Population: 8,703
 Population served by public supply: 5,953
 Acres irrigated: 27,902
 Hydroelectric use (Mgal/d): 0



WITHDRAWALS IN MILLION GALLONS PER DAY							
	Public Supply	Domestic & Commercial	Industry & Mining	Irrigation	Livestock	Thermo-electric	TOTALS
Ground Water	0.74	0.22	1.08	0.91	0.03	0.00	2.98
Surface Water	0.00	0.00	0.00	4.62	0.13	0.00	4.75
TOTALS	0.74	0.22	1.08	5.53	0.16	0.00	7.73

Withdrawals by Major Public Suppliers (Mgal/d):

	GW	SW
City of Ashburn	0.61	0.00
Town of Rebecca	0.02	0.00
City of Sycamore	0.10	0.00

Withdrawals by Major Industrial Groups (Mgal/d):

	GW	SW
28 Chemicals	1.08	0.00

TWIGGS COUNTY

Population: 9,806
 Population served by public supply: 2,120
 Acres irrigated: 1,289
 Hydroelectric use (Mgal/d): 0



WITHDRAWALS IN MILLION GALLONS PER DAY							
	Public Supply	Domestic & Commercial	Industry & Mining	Irrigation	Livestock	Thermo-electric	TOTALS
Ground Water	0.26	0.59	17.88	0.01	0.02	0.00	18.76
Surface Water	0.00	0.00	0.00	0.04	0.02	0.00	0.06
TOTALS	0.26	0.59	17.88	0.05	0.04	0.00	18.82

Withdrawals by Major Public Suppliers (Mgal/d):

	GW	SW
Town of Danville	0.03	0.00
City of Jeffersonville	0.23	0.00

Withdrawals by Major Industrial Groups (Mgal/d):

SIC	GW	SW
14 Mining	0.33	0.00
32 Stone, Clay	17.55	0.00

UNION COUNTY

Population: 11,993
 Population served by public supply: 6,720
 Acres irrigated: 12
 Hydroelectric use (Mgal/d): 374



WITHDRAWALS IN MILLION GALLONS PER DAY							
	Public Supply	Domestic & Commercial	Industry & Mining	Irrigation	Livestock	Thermo-electric	TOTALS
Ground Water	0.53	0.46	0.00	0.00	0.00	0.00	0.99
Surface Water	0.00	0.00	0.00	0.02	0.12	0.00	0.14
TOTALS	0.53	0.46	0.00	0.02	0.12	0.00	1.13

Withdrawals by Major Public Suppliers (Mgal/d):

	GW	SW
City of Blairsville	0.05	0.00
Coosa Water Auth.	0.11	0.00
Notla Water Auth.	0.16	0.00

Withdrawals by Major Industrial Groups (Mgal/d):

SIC	GW	SW
-----	----	----

UPSON COUNTY

Population: 26,300
 Population served by public supply: 16,323
 Acres irrigated: 1,214
 Hydroelectric use (Mgal/d): 0



WITHDRAWALS IN MILLION GALLONS PER DAY							
	Public Supply	Domestic & Commercial	Industry & Mining	Irrigation	Livestock	Thermo-electric	TOTALS
Ground Water	0.17	0.76	0.00	0.00	2.02	0.00	2.95
Surface Water	1.97	0.00	2.80	0.21	2.16	0.00	7.14
TOTALS	2.14	0.76	2.80	0.21	4.18	0.00	10.09

Withdrawals by Major Public Suppliers (Mgal/d):

	GW	SW
City of Thomaston	0.00	1.97
City of Yatesville	0.04	0.00

Withdrawals by Major Industrial Groups (Mgal/d):

SIC	GW	SW
22 Textiles	0.00	2.80

WALKER COUNTY

Population: 58,340
 Population served by public supply: 41,557
 Acres irrigated: 115
 Hydroelectric use (Mgal/d): 0



WITHDRAWALS IN MILLION GALLONS PER DAY							
	Public Supply	Domestic & Commercial	Industry & Mining	Irrigation	Livestock	Thermo-electric	TOTALS
Ground Water	4.04	1.34	0.60	0.12	0.01	0.00	6.11
Surface Water	2.63	0.00	4.20	0.00	0.31	0.00	7.14
TOTALS	6.67	1.34	4.80	0.12	0.32	0.00	13.25

Withdrawals by Major Public Suppliers (Mgal/d):

	GW	SW
City of Chickamauga	0.11	0.00
Kensington Water & Sewer	0.55	0.00
City of Lafayette	1.80	0.00
Walker County Water & Sewer	0.85	1.80
Walker County Rural Water & Sewer Auth.	0.73	0.00

Withdrawals by Major Industrial Groups (Mgal/d):

SIC	GW	SW
22 Textiles	0.60	4.20

WALTON COUNTY

Population: 38,586
 Population served by public supply: 20,445
 Acres irrigated: 419
 Hydroelectric use (Mgal/d): 0



WITHDRAWALS IN MILLION GALLONS PER DAY							
	Public Supply	Domestic & Commercial	Industry & Mining	Irrigation	Livestock	Thermo-electric	TOTALS
Ground Water	0.73	1.38	0.00	0.08	0.00	0.00	2.19
Surface Water	3.22	0.00	0.00	0.07	0.22	0.00	3.51
TOTALS	3.95	1.38	0.00	0.15	0.22	0.00	5.70

Withdrawals by Major Public Suppliers (Mgal/d):

	GW	SW
Town of Jersey	0.03	0.00
City of Monroe	0.00	2.77
City of Social Circle	0.00	0.45

Withdrawals by Major Industrial Groups (Mgal/d):

SIC	GW	SW

WARE COUNTY

Population: 35,471
 Population served by public supply: 25,657
 Acres irrigated: 1,872
 Hydroelectric use (Mgal/d): 0



WITHDRAWALS IN MILLION GALLONS PER DAY							
	Public Supply	Domestic & Commercial	Industry & Mining	Irrigation	Livestock	Thermo-electric	TOTALS
Ground Water	4.65	0.80	0.41	0.51	0.02	0.00	6.39
Surface Water	0.00	0.00	0.00	0.33	0.10	0.00	0.43
TOTALS	4.65	0.80	0.41	0.84	0.12	0.00	6.82

Withdrawals by Major Public Suppliers (Mgal/d):

	GW	SW
Manor Water System	0.37	0.00
Ware County Water System	1.02	0.00
City of Waycross	2.82	0.00
Waycross-Ware County Airport	0.19	0.00

Withdrawals by Major Industrial Groups (Mgal/d):

SIC	GW	SW
30 Rubber	0.41	0.00

WARREN COUNTY

Population: 6,078
 Population served by public supply: 3,120
 Acres irrigated: 365
 Hydroelectric use (Mgal/d): 0



WITHDRAWALS IN MILLION GALLONS PER DAY							
	Public Supply	Domestic & Commercial	Industry & Mining	Irrigation	Livestock	Thermo-electric	TOTALS
Ground Water	0.03	0.22	2.40	0.03	0.01	0.00	2.69
Surface Water	0.30	0.00	2.25	0.03	0.09	0.00	2.67
TOTALS	0.33	0.22	4.65	0.06	0.10	0.00	5.36

Withdrawals by Major Public Suppliers (Mgal/d):

	GW	SW
Town of Camak	0.01	0.00
Town of Norwood	0.02	0.00
City of Warrenton	0.00	0.30

Withdrawals by Major Industrial Groups (Mgal/d):

SIC	GW	SW
14 Mining	0.02	0.00
32 Stone, Clay	2.38	2.25

WASHINGTON COUNTY

Population: 19,112
 Population served by public supply: 9,324
 Acres irrigated: 5,384
 Hydroelectric use (Mgal/d): 0



WITHDRAWALS IN MILLION GALLONS PER DAY							
	Public Supply	Domestic & Commercial	Industry & Mining	Irrigation	Livestock	Thermo-electric	TOTALS
Ground Water	1.84	0.75	16.83	1.53	0.03	0.00	20.98
Surface Water	0.00	0.00	0.00	1.27	0.10	0.00	1.37
TOTALS	1.84	0.75	16.83	2.80	0.13	0.00	22.35

Withdrawals by Major Public Suppliers (Mgal/d):

	GW	SW
City of Davisboro	0.03	0.00
Town of Deepstep	0.01	0.00
Town of Harrison	0.02	0.00
Town of Oconee	0.03	0.00
Town of Riddleville	0.11	0.00
City of Sandersville	1.44	0.00
City of Tennille	0.19	0.00
Warthen Water Assoc.	0.01	0.00

Withdrawals by Major Industrial Groups (Mgal/d):

SIC	GW	SW
14 Mining	1.12	0.00
20 Food	0.03	0.00
32 Stone, Clay	15.70	0.00

WAYNE COUNTY

Population: 22,356
 Population served by public supply: 12,217
 Acres irrigated: 3,384
 Hydroelectric use (Mgal/d): 0



WITHDRAWALS IN MILLION GALLONS PER DAY							
	Public Supply	Domestic & Commercial	Industry & Mining	Irrigation	Livestock	Thermo-electric	TOTALS
Ground Water	2.44	0.81	65.95	0.50	0.01	0.00	69.71
Surface Water	0.00	0.00	0.00	0.35	0.06	0.00	0.41
TOTALS	2.44	0.81	65.95	0.85	0.07	0.00	70.12

Withdrawals by Major Public Suppliers (Mgal/d):

	GW	SW
City of Jesup	1.62	0.00
Town of Odum	0.02	0.00
City of Screven	0.73	0.00

Withdrawals by Major Industrial Groups (Mgal/d):

	GW	SW
28 Chemicals	65.95	0.00

WEBSTER COUNTY

Population: 2,263
 Population served by public supply: 716
 Acres irrigated: 7,180
 Hydroelectric use (Mgal/d): 0



WITHDRAWALS IN MILLION GALLONS PER DAY							
	Public Supply	Domestic & Commercial	Industry & Mining	Irrigation	Livestock	Thermo-electric	TOTALS
Ground Water	0.10	0.12	0.00	0.24	0.01	0.00	0.47
Surface Water	0.00	0.00	0.00	2.17	0.03	0.00	2.20
TOTALS	0.10	0.12	0.00	2.41	0.04	0.00	2.67

Withdrawals by Major Public Suppliers (Mgal/d):

	GW	SW
City of Preston	0.08	0.00
Town of Weston	0.01	0.00

Withdrawals by Major Industrial Groups (Mgal/d):

	GW	SW
None		

WHEELER COUNTY

Population: 4,903
 Population served by public supply: 2,645
 Acres irrigated: 4,776
 Hydroelectric use (Mgal/d): 0



WITHDRAWALS IN MILLION GALLONS PER DAY							
	Public Supply	Domestic & Commercial	Industry & Mining	Irrigation	Livestock	Thermo-electric	TOTALS
Ground Water	0.27	0.17	0.00	0.23	0.02	0.00	0.69
Surface Water	0.00	0.00	0.00	1.49	0.06	0.00	1.55
TOTALS	0.27	0.17	0.00	1.72	0.08	0.00	2.24

Withdrawals by Major Public Suppliers (Mgal/d):

	GW	SW
City of Alamo	0.21	0.00
City of Glenwood	0.06	0.00

Withdrawals by Major Industrial Groups (Mgal/d):

SIC	GW	SW
None		

WHITE COUNTY

Population: 13,006
 Population served by public supply: 4,020
 Acres irrigated: 73
 Hydroelectric use (Mgal/d): 0



WITHDRAWALS IN MILLION GALLONS PER DAY							
	Public Supply	Domestic & Commercial	Industry & Mining	Irrigation	Livestock	Thermo-electric	TOTALS
Ground Water	0.64	0.73	0.00	0.01	0.00	0.00	1.38
Surface Water	0.23	0.00	1.64	0.04	0.44	0.00	2.35
TOTALS	0.87	0.73	1.64	0.05	0.44	0.00	3.73

Withdrawals by Major Public Suppliers (Mgal/d):

	GW	SW
City of Cleveland	0.18	0.23
City of Helen	0.25	0.00
City of Robertstown	0.19	0.00

Withdrawals by Major Industrial Groups (Mgal/d):

SIC	GW	SW
14 Mining	0.00	1.64

WHITFIELD COUNTY

Population: 72,462
 Population served by public supply: 71,737
 Acres irrigated: 407
 Hydroelectric use (Mgal/d): 0



WITHDRAWALS IN MILLION GALLONS PER DAY							
	Public Supply	Domestic & Commercial	Industry & Mining	Irrigation	Livestock	Thermo-electric	TOTALS
Ground Water	0.00	0.10	0.00	0.00	0.01	0.00	0.16
Surface Water	35.72	0.00	0.00	0.62	0.21	0.00	36.55
TOTALS	35.72	0.10	0.00	0.62	0.22	0.00	36.71

Withdrawals by Major Public Suppliers (Mgal/d):

	GW	SW
Dalton Utilities	0.00	35.72

Withdrawals by Major Industrial Groups (Mgal/d):

	SIC
	None

WILCOX COUNTY

Population: 7,008
 Population served by public supply: 3,572
 Acres irrigated: 29,512
 Hydroelectric use (Mgal/d): 0



WITHDRAWALS IN MILLION GALLONS PER DAY							
	Public Supply	Domestic & Commercial	Industry & Mining	Irrigation	Livestock	Thermo-electric	TOTALS
Ground Water	0.62	0.26	0.00	5.71	0.02	0.00	6.61
Surface Water	0.00	0.00	0.00	10.95	0.10	0.00	11.05
TOTALS	0.62	0.26	0.00	16.66	0.12	0.00	17.66

Withdrawals by Major Public Suppliers (Mgal/d):

	GW	SW
City of Abbeville	0.08	0.00
Town of Pineview	0.10	0.00
City of Pitts	0.02	0.00
City of Rochelle	0.40	0.00
Town of Seville	0.01	0.00

Withdrawals by Major Industrial Groups (Mgal/d):

	SIC
	None

WILKES COUNTY

Population: 10,597
 Population served by public supply: 7,707
 Acres irrigated: 206
 Hydroelectric use (Mgal/d): 0



WITHDRAWALS IN MILLION GALLONS PER DAY							
	Public Supply	Domestic & Commercial	Industry & Mining	Irrigation	Livestock	Thermo-electric	TOTALS
Ground Water	0.07	0.22	0.00	0.02	0.00	0.00	0.31
Surface Water	2.38	0.00	0.00	0.02	0.29	0.00	2.69
TOTALS	2.45	0.22	0.00	0.04	0.29	0.00	3.00

Withdrawals by Major Public Suppliers (Mgal/d):

	GW	SW
Rayle Water Assoc.	0.02	0.00
City of Tignall	0.05	0.00
City of Washington	0.00	2.38

Withdrawals by Major Industrial Groups (Mgal/d):

SIC	GW	SW
None		

WILKINSON COUNTY

Population: 10,228
 Population served by public supply: 6,237
 Acres irrigated: 306
 Hydroelectric use (Mgal/d): 0



WITHDRAWALS IN MILLION GALLONS PER DAY							
	Public Supply	Domestic & Commercial	Industry & Mining	Irrigation	Livestock	Thermo-electric	TOTALS
Ground Water	0.93	0.30	20.82	0.26	0.01	0.00	22.32
Surface Water	0.00	0.00	0.00	0.16	0.03	0.00	0.19
TOTALS	0.93	0.30	20.82	0.42	0.04	0.00	22.51

Withdrawals by Major Public Suppliers (Mgal/d):

	GW	SW
Town of Allentown	0.02	0.00
Town of Gordon	0.38	0.00
Town of Irwinton	0.20	0.00
Town of Ivey	0.11	0.00
Town of McIntyre	0.10	0.00
Town of Toombsboro	0.12	0.00

Withdrawals by Major Industrial Groups (Mgal/d):

SIC	GW	SW
14 Mining	4.30	0.00
32 Stone, Clay	16.52	0.00

WORTH COUNTY

Population: 19,745
 Population served by public supply: 8,568
 Acres irrigated: 22,662
 Hydroelectric use (Mgal/d): 2110



WITHDRAWALS IN MILLION GALLONS PER DAY							
	Public Supply	Domestic & Commercial	Industry & Mining	Irrigation	Livestock	Thermo-electric	TOTALS
Ground Water	0.91	0.92	0.00	6.64	0.04	0.00	8.51
Surface Water	0.00	0.00	0.00	3.49	0.20	15.00	18.69
TOTALS	0.91	0.92	0.00	10.13	0.24	15.00	27.20

Withdrawals by Major Public Suppliers (Mgal/d):

	GW	SW
Isabella Water System	0.04	0.00
City of Poulan	0.05	0.00
Town of Sumner	0.03	0.00
City of Sylvester	0.69	0.00
City of Warwick	0.05	0.00

Withdrawals by Major Industrial Groups (Mgal/d):

SIC	GW	SW
None		

Publications Consultant: Patricia Allgood

The Department of Natural Resources is an equal opportunity employer and offers all persons the opportunity to compete and participate in each area of DNR employment regardless of race, color, religion, sex, national origin, age, handicap, or other non-merit factors.

§2707/500