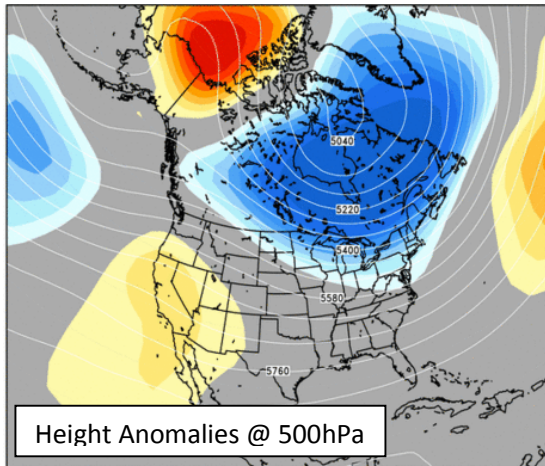


Georgia Climate Summary for March 2014

Prepared by Nyasha Dunkley and Sean Miller
State of Georgia Climate Office

Summary

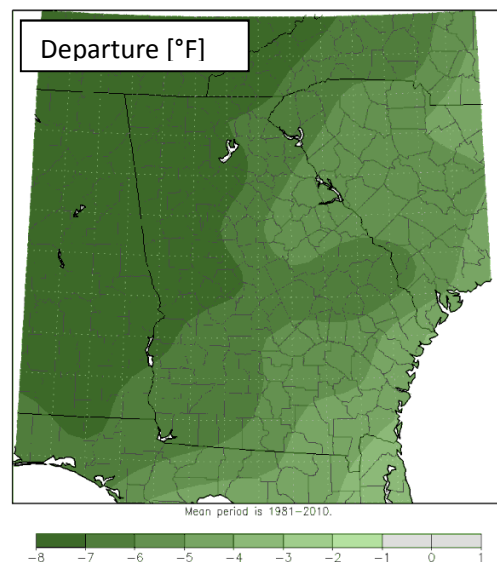


The mean upper-level circulation pattern for March featured anomalously strong ridging over northern Alaska and northwestern Canada, with stout ridging also extending from the eastern north Pacific into the western continental United States. Anomalously strong troughing persisted across much of

eastern North America with the greatest anomalies from the northeastern and Great Lakes regions of the U.S. into much of eastern Canada. This pattern brought colder and drier than normal condition to Georgia during the month.

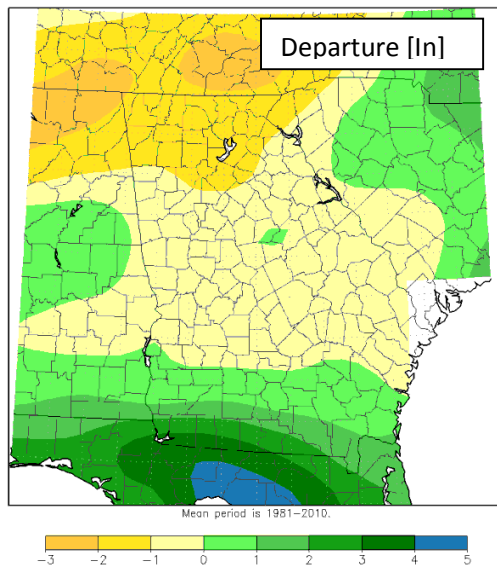
Temperatures

Monthly average temperatures were below normal statewide, with the greatest departures found across the south and east. Athens had a mean temperature of 51.5°, which is 2.8° below normal for March. Other monthly averages include Atlanta with 52.5° (1.8° below normal), Augusta with 51.8° (4.1° below normal), Columbus with 54.7° (3.1° below normal), Macon with 52.8° (4.0° below



normal) and Savannah with 56.6° (1.6° below normal). The mean statewide temperature was 52.8°, which the National Climatic Data Center (NCDC) ranked as the 27th coolest March on record.

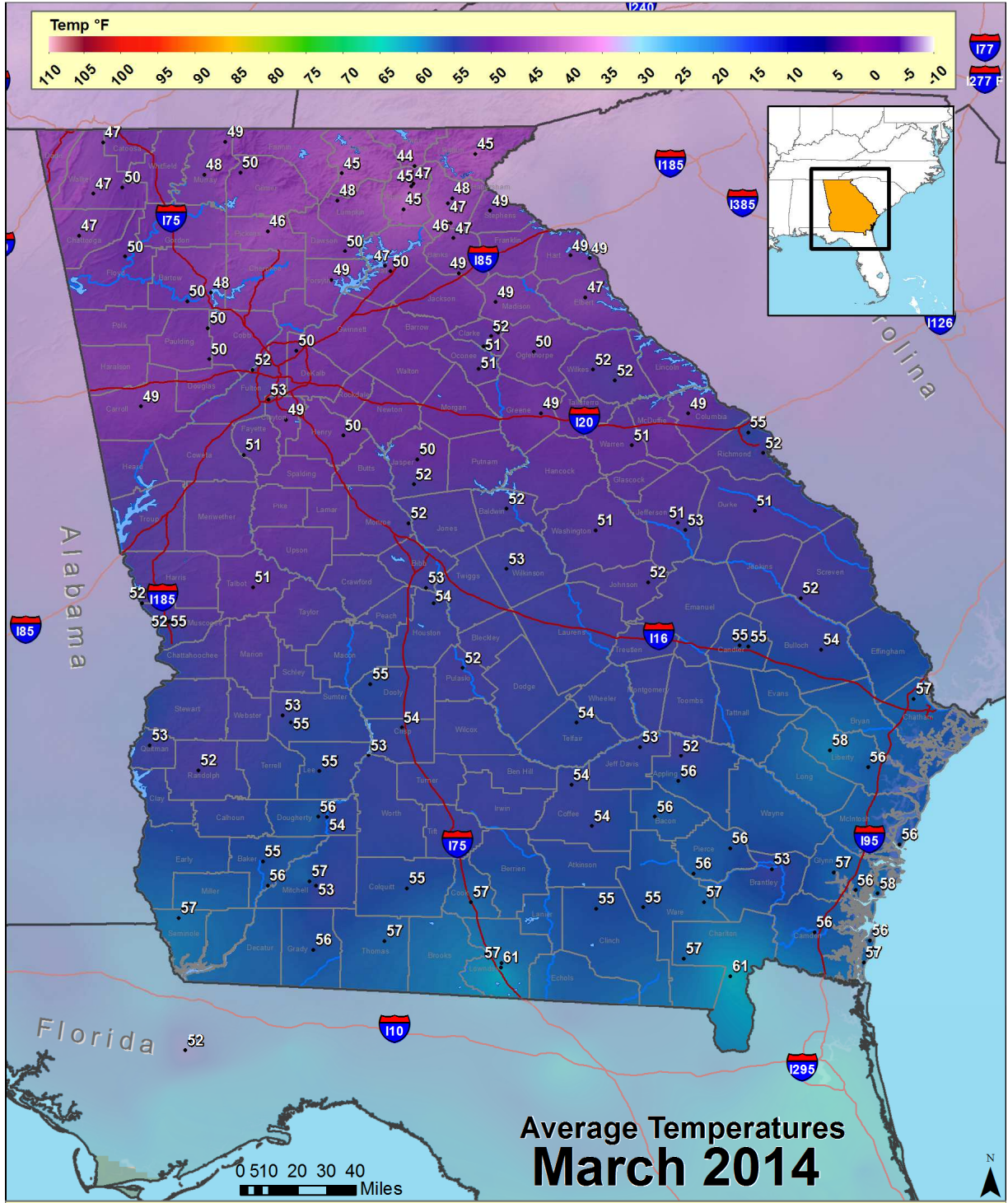
Precipitation



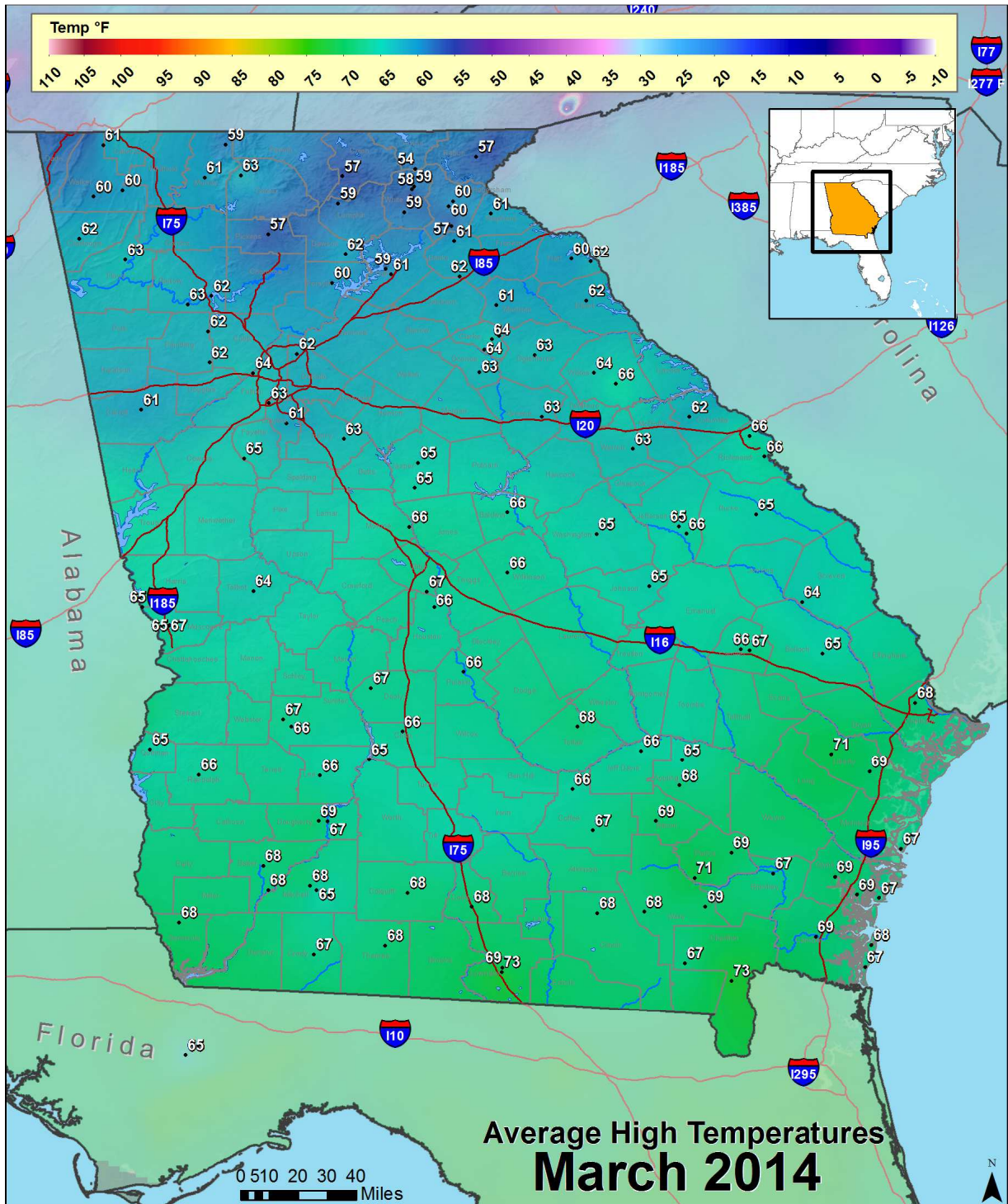
Precipitation ranged from one to two inches below normal across the north to over three inches above normal across the far south and west. Athens received 3.37" for the month (1.06" below normal), Atlanta had 3.12" (1.69" below normal), Augusta had 2.56" (1.50" below normal), Columbus had 5.40" (0.06" below normal), Macon had 3.93" (0.62" below normal), and Savannah had 2.65" (1.08" below normal). The greatest monthly rainfall amounts were in the southwest, where the Thomasville CoCoRaHS observer reported 9.39", and the nearby NWS cooperative observer picked up 8.14". The second greatest monthly rainfall total was reported south of Donalsonville where an impressive 8.37" fell. The greatest one day rainfall totals occurred in the south on the 16th, when the CoCoRaHS observer near Lake Park reported 3.99". Several other observers reported amounts exceeding 3.5" including Donalsonville (3.95"), Valdosta (3.91"), and Thomasville (3.77").

Storm Reports

Severe weather affected far southern portions of the state on the 16th in association with a squall line. Scattered wind damage reports were received particularly in and around Valdosta where trees and power lines were downed. Elsewhere across the state March was a fairly quiet month for severe weather overall.

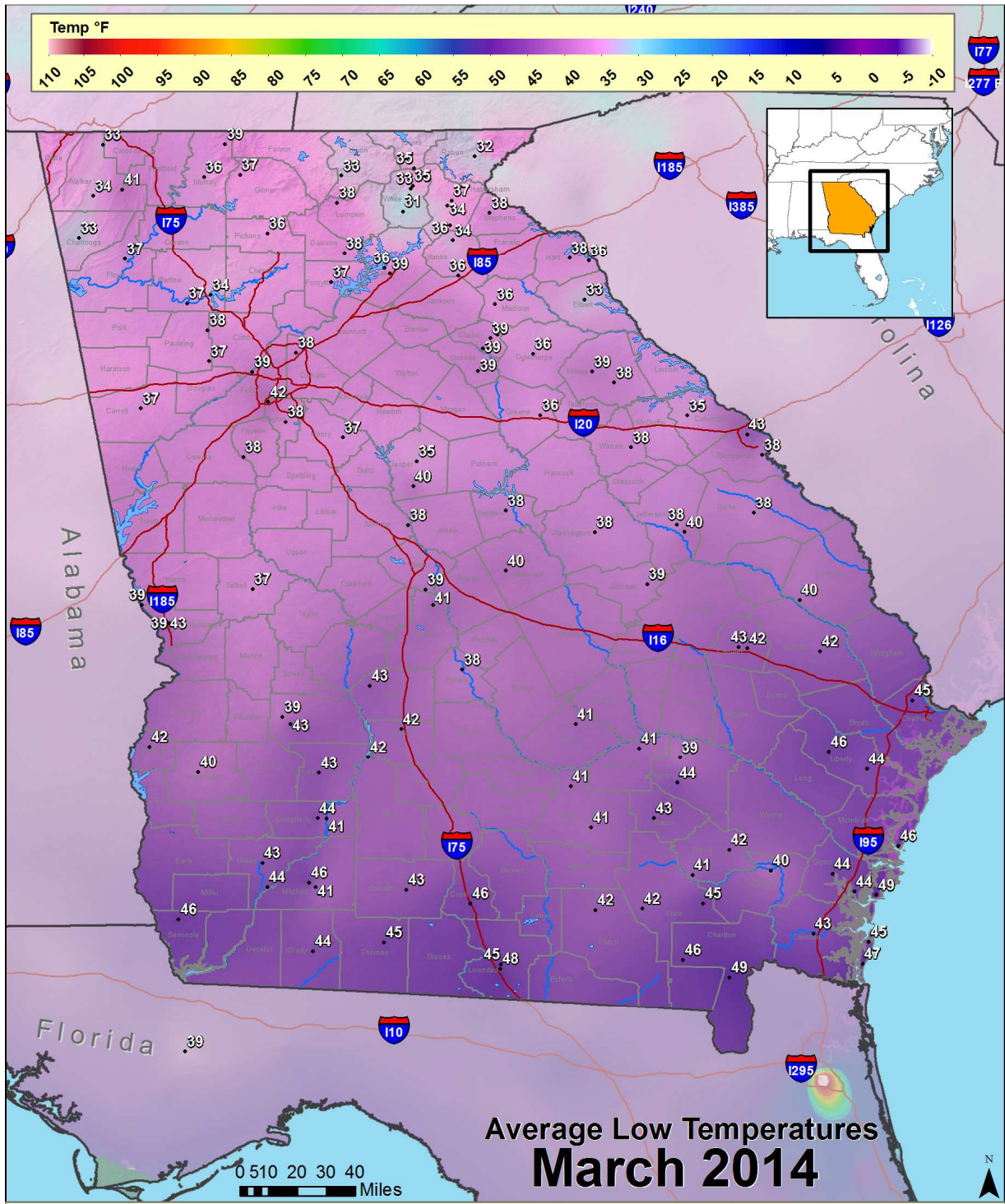


Map created using provisional data from various meteorological networks. All values are considered preliminary. State of Georgia Limited quality control has been applied. State of Georgia Climate Office

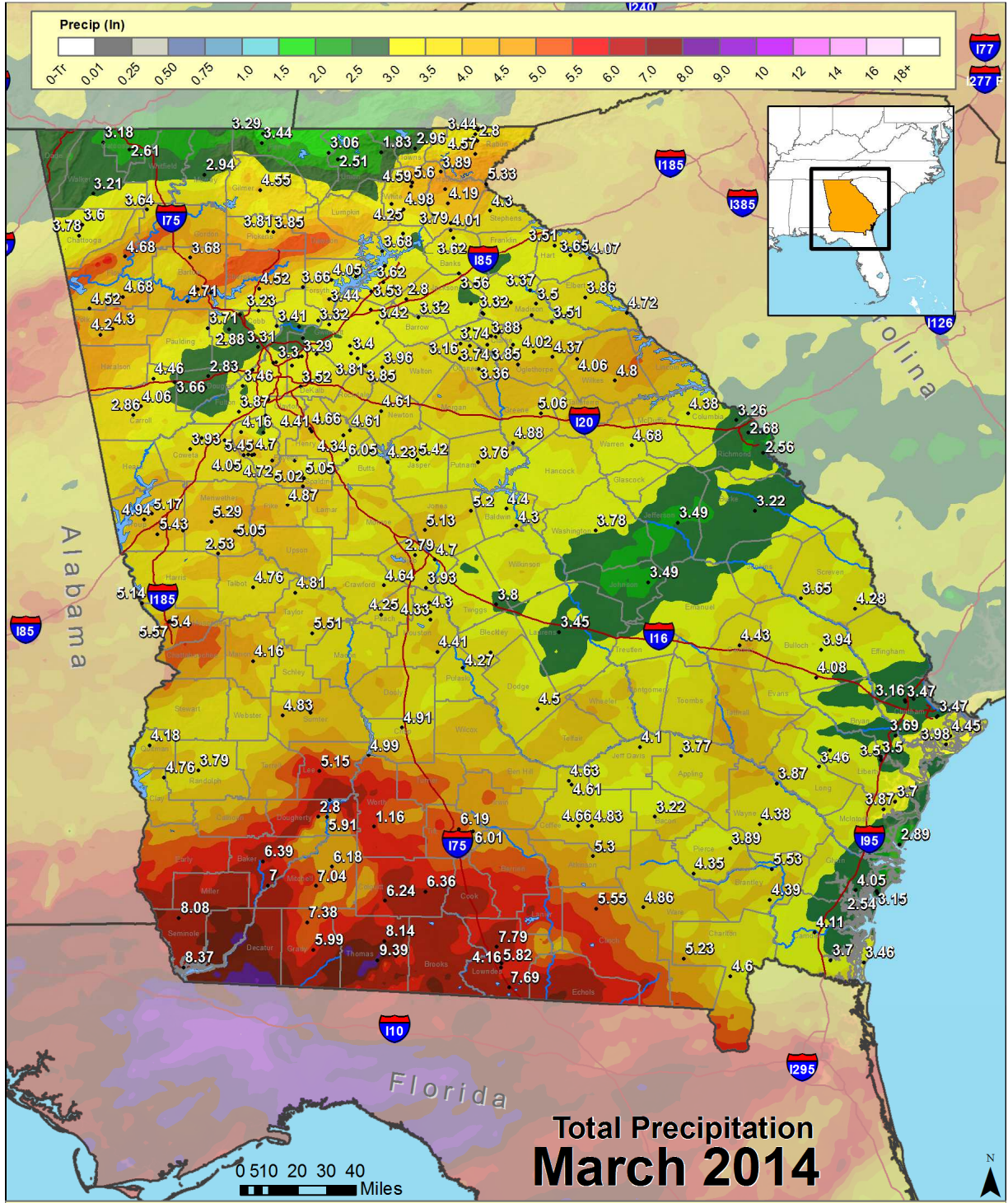


Average High Temperatures
March 2014

Map created using provisional data from various meteorological networks. All values are considered preliminary. State of Georgia Limited quality control has been applied. State of Georgia Climate Office

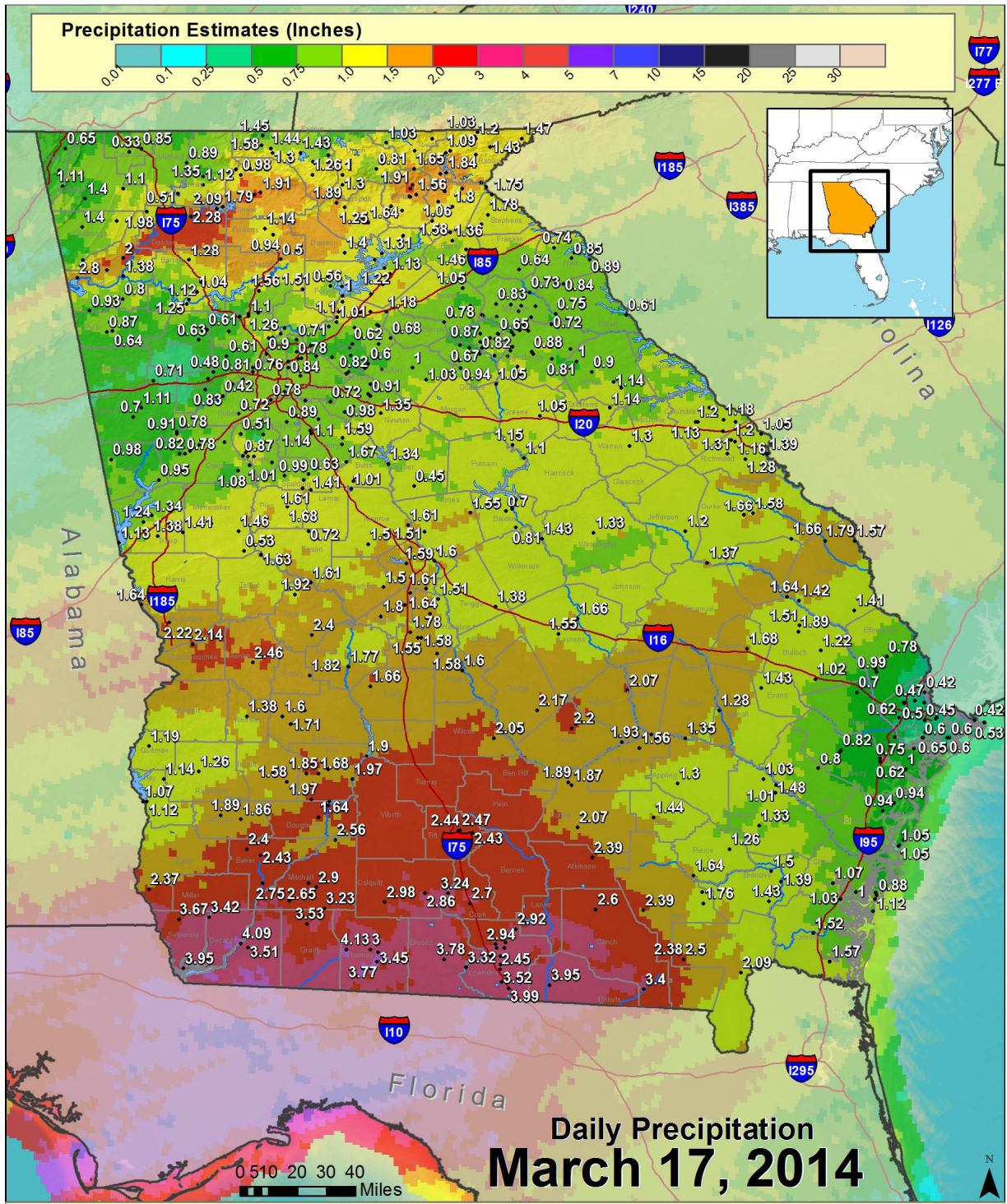


Map created using provisional data from various meteorological networks. All values are considered preliminary. State of Georgia Limited quality control has been applied. State of Georgia Climate Office



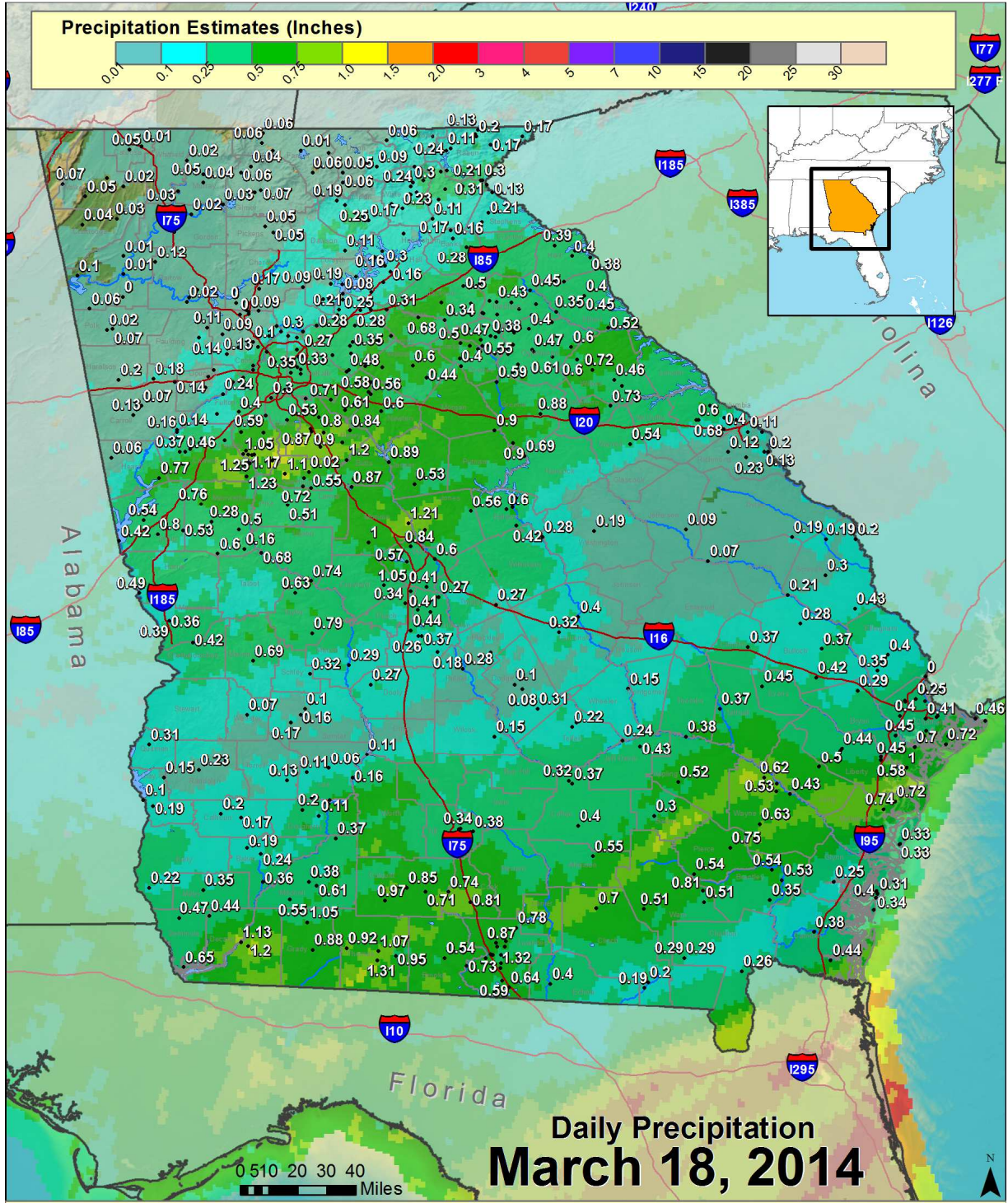
From SERFC multisensor precipitation estimates and observed reports. Data are preliminary and are not quality controlled. Plot is for the 24 hour period ending at 7AM EST (8AM EDT) on the indicated day.

State of Georgia
Climate Office



From SERFC multisensor precipitation estimates and observed reports. Data are preliminary and are not quality controlled. Plot is for the 24 hour period ending at 7AM EST (8AM EDT) on the indicated day.

State of Georgia
Climate Office



Daily Precipitation
March 18, 2014

From SERFC multisensor precipitation estimates and observed reports. Data are preliminary and are not quality controlled. Plot is for the 24 hour period ending at 7AM EST (8AM EDT) on the indicated day.

State of Georgia
 Climate Office