

October 2013 Climate Summary - Georgia

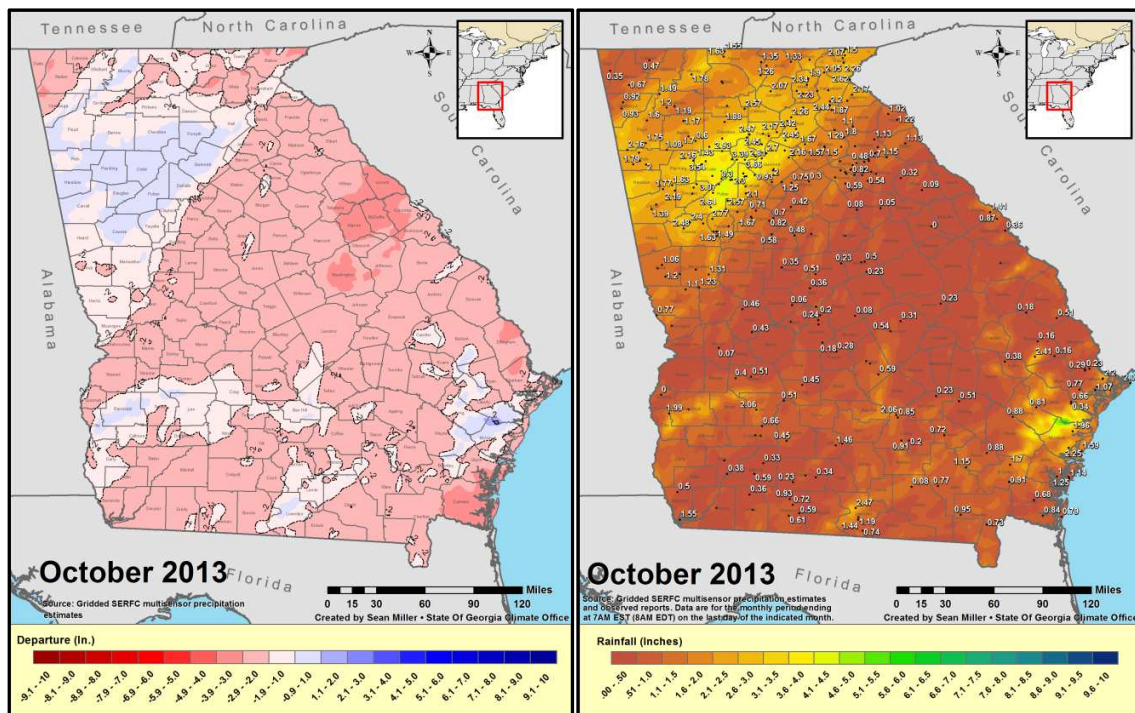
Nyasha Dunkley, *Deputy State Climatologist*

Sean Miller, *Service Climatologist*

State of Georgia Climate Office

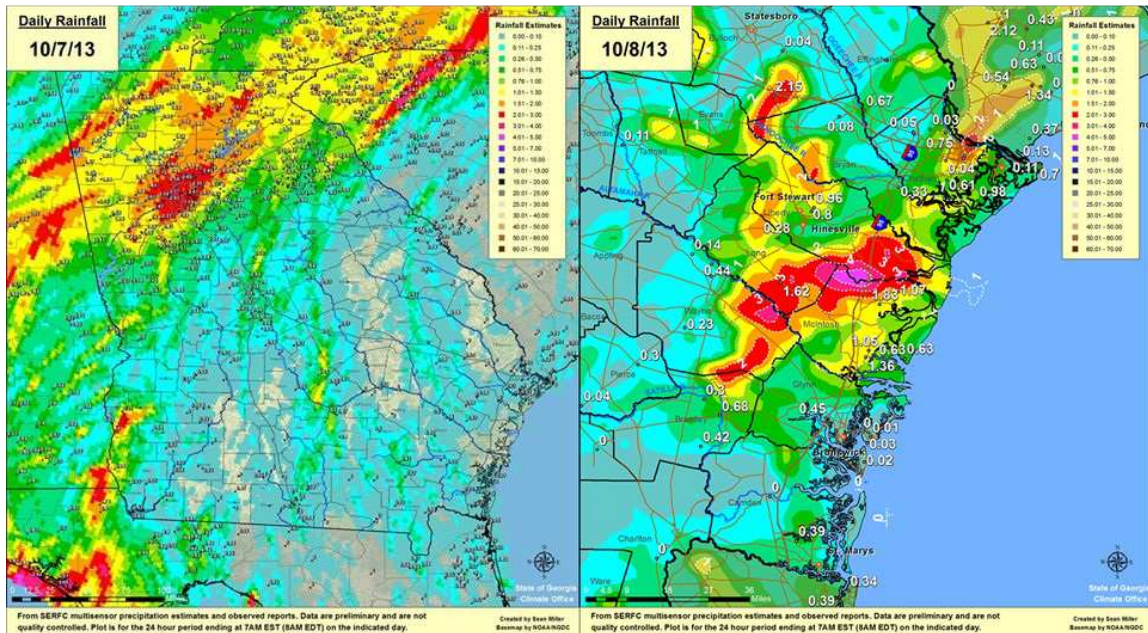
Precipitation

October was characterized by warmer than normal temperatures and below normal rainfall. Climatologically, the fall season is one of the driest periods for the region. Atlanta, Columbus, Macon and Athens were among major climate sites that recorded -0.84, -2.13, -2.17, and -2.28 inches below normal rainfall, respectively. The total precipitation at Augusta Regional Bush Field was 0.36 inches or 2.91 inches below the normal of 3.27 inches. It was the 16th driest October on record at Augusta. The Warrenton Cooperative Observing site had no rainfall for the entire month, which set a record for its driest month on record.



Shown are observed and departure rainfall totals during the month of October

A brief heavy rainfall event occurred at the beginning of the month, as a cold front moved across the region on the 7th and 8th. Radar estimates that over 4” of rain fell along the McIntosh/Liberty county line on the 7th. Nearby CoCoRaHS observers reported one to nearly two inches of rain during the same period.

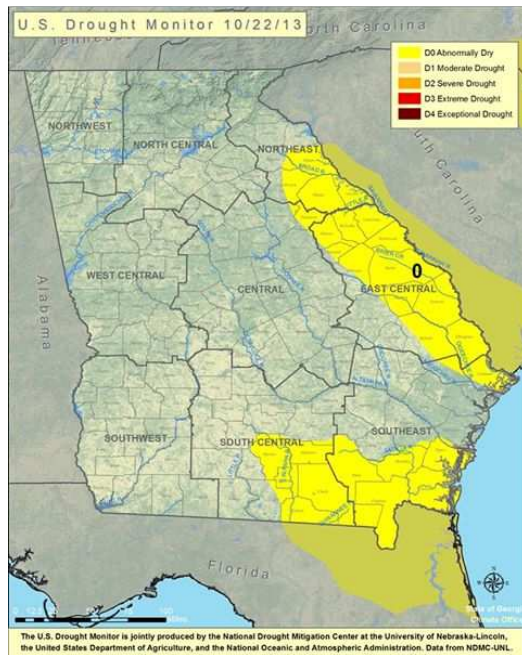


Shown are rainfall totals for the 7th and 8th

Ellijay is among the wettest spots in the state this year. The wettest year on record for Ellijay is 1967 when 84.69” of precipitation fell. So far this year Ellijay has received 75.80”. It will take an additional 8.9” of rain to break 1967’s record. Rainfall records for Ellijay extend back to 1937.



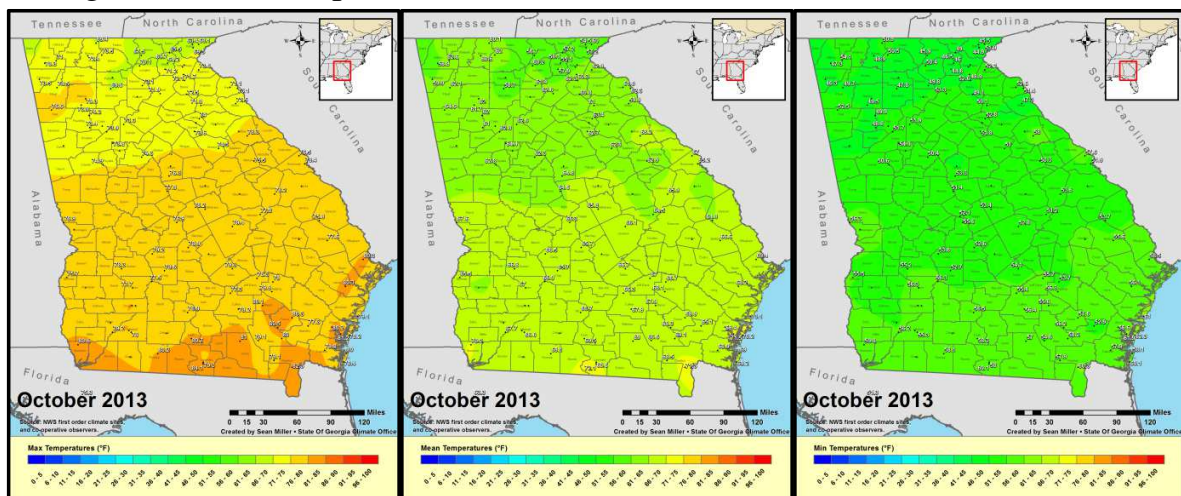
Abnormally dry conditions spread across portions of eastern and southeast Georgia towards the end of the month, earning a designation of D0 by the U.S. Drought Monitor. This designation typically indicates short-term dryness slowing planting, growth of crops or pastures.



Drought Monitor conditions across the state by October 22nd

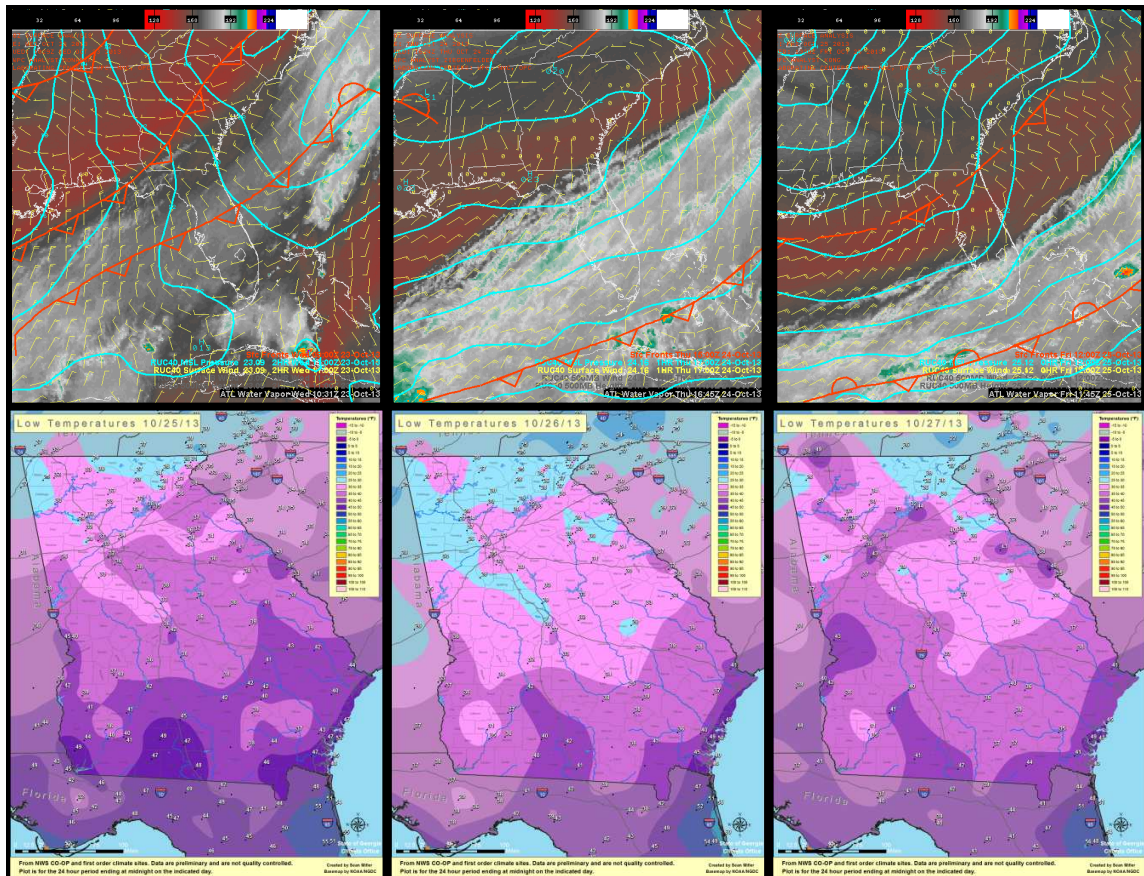
Temperatures

Temperatures across the state were near to slightly above normal for most areas, and departures ranged from two degrees above normal across portions of the west central to one degree below normal over portions of the southeast and north central. Columbus had its 10th warmest October on record with a mean temperature of 68.4° (1.9° above normal). Columbus also observed its 10th warmest monthly average minimum temperature with 57.7°.

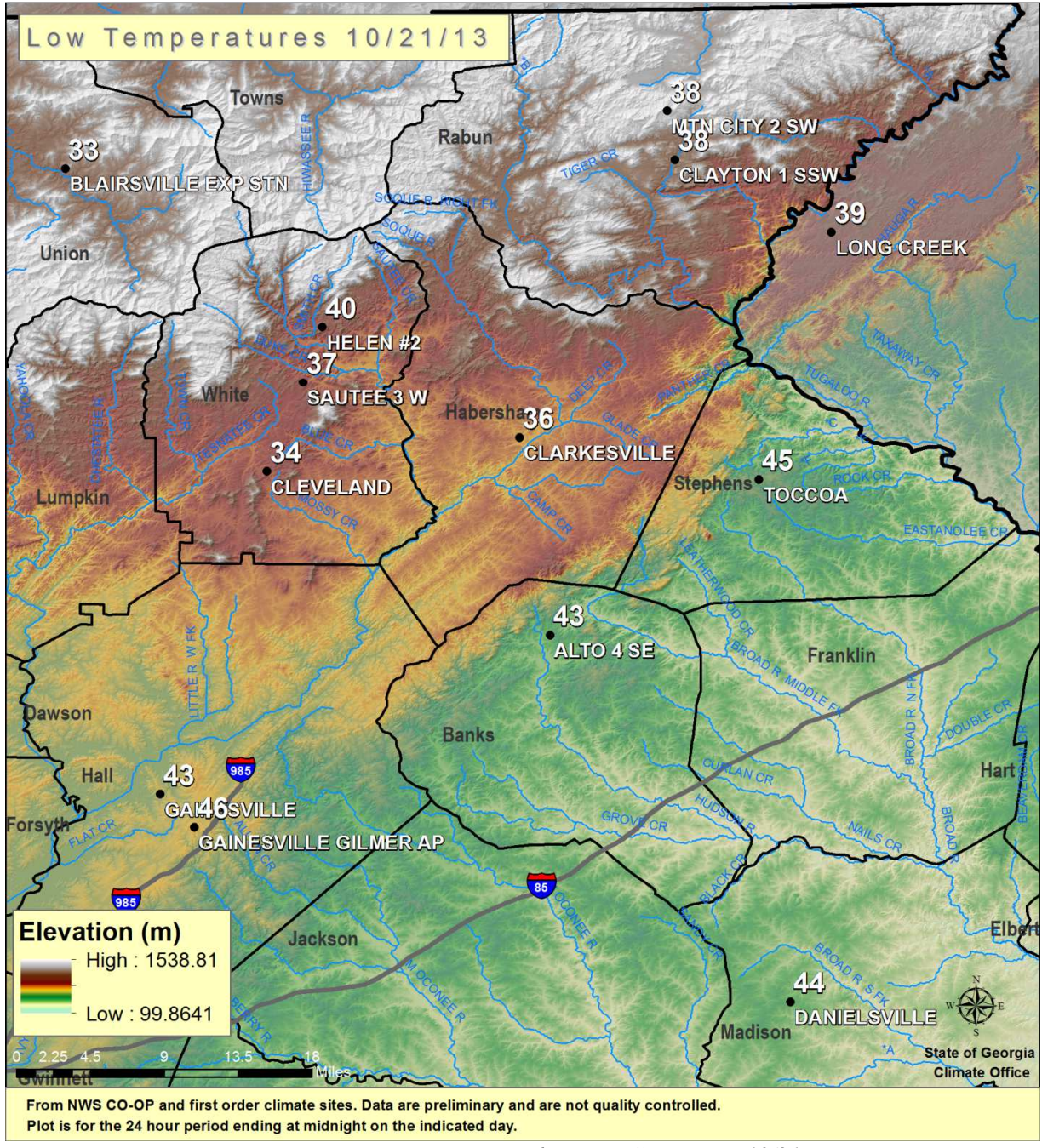


Shown are high, mean, and low temperatures during the month of October.

A warm spell occurred from the 4th through the 7th with temperatures in central and southern sections reaching well into the 80s and lower 90s. The Valdosta Regional Airport recorded a maximum temperature of 92° on the 4th, which was the warmest daily maximum observed in the state during the month. Slightly cooler conditions prevailed from the 8th through the 11th following a frontal passage, with moderating temperatures through the 13th. A series of cold fronts brought colder conditions from the 17th through the 27th, with freezes observed at several locations in the north and central areas. The season's first freeze was reported on the 20th at the Blairsville Cooperative Observing site, while the month's coldest daily minimum of 25° occurred at LaFayette (on the 25th) and Toccoa (26th). Temperatures following this cold spell began a slow moderating trend which continued for the remainder of the month.



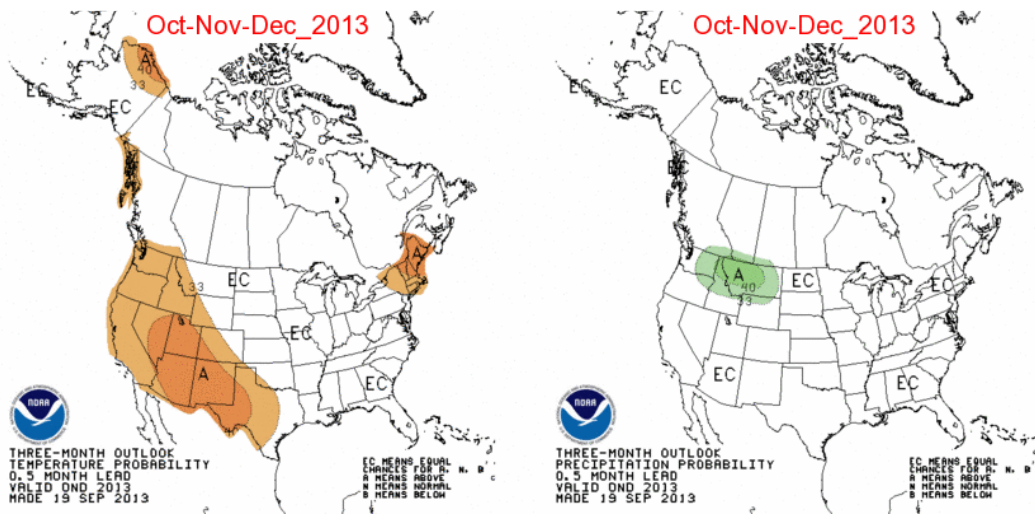
A series of cold fronts moving through the state from the 23th through the 25th (top panels) and the minimum temperatures from the 25th through 27th (bottom panels)



Low temperatures across northeastern Georgia on 10/21

Seasonal Outlook

The three month seasonal outlook from NOAA's Climate Prediction Center reflects an equal chance of above, below or normal temperatures and precipitation across much of the Eastern U.S. and over the state. ENSO-neutral conditions continue in the equatorial Pacific and are forecasted to remain as such through spring of 2014.



Climate Statistics for October 2013

Location	Avg. Maximum Temperature (departure) Ranking*	Avg. Minimum Temperature (departure) Ranking*	Mean Temperature (departure) Ranking*	Total Rainfall (departure) Ranking*
Athens	74 (-0.4) 55th warmest	52.8 (+1.3) T-31st warmest	63.4 (+0.4) T-48th warmest	1.27 (-2.28) 31st driest
Atlanta	73.8 (+1.1) T-42nd warmest	54.9 (+0.9) T-41st warmest	64.4 (+1.0) T-38th warmest	2.57 (-0.84) T-61st wettest
Augusta	78.4 (+0.7) T-33rd warmest	51.9 (+0.9) 57th coldest	65.2 (+0.8) T-58th warmest	0.36 (-2.91) 16th driest
Columbus	79.1 (+1.8) 17th warmest	57.7 (+2.1) 10th warmest	68.4 (+1.9) 10th warmest	0.45 (-2.13) 10th driest
Macon	78.2 (+0.8) T-41st warmest	52.1 (-0.3) 46th coldest	65.1 (+0.2) T-58th warmest	0.62 (-2.17) 23rd driest
Savannah	80.3 (+1.9) T-15th warmest	58.5 (+1.0) T-67th warmest	69.4 (+1.4) T-38th warmest	0.23 (-3.46) T-8th driest

*T denotes tie

TOP FIVE MONTHLY EXTREMES***Greatest Rainfall Totals**

Location	Type	Amt
DUNWOODY 1.8 WNW	CoCoRaHS	4.00
SANDY SPRINGS 3.2 WNW	CoCoRaHS	3.70
ROSWELL 4.8 SE	CoCoRaHS	3.66
KENNESAW 3.1 SSW	CoCoRaHS	3.54
ATLANTA FULTON CO AP	WBAN	3.48

Highest Mean Temperatures

Location	Type	T °
VALDOSTA RGNL AP	WBAN	72.1
BRUNSWICK	COOP	71.5
JOHNTOWN	COOP	70.7
BRUNSWICK MALCOLM MCKINNON AP	WBAN	70.2
DONALSONVILLE	COOP	70.2

Lowest Mean Temperatures

Location	Type	T °
MTN CITY 2 SW	COOP	54.5
SAUTEE 3 W	COOP	55.1
TOCCOA #1 GEORGIA	RAWS	56.7
BRASSTOWN #1 GEORGIA	RAWS	57.2
CLAYTON 1 SSW	COOP	57.2

TOP FIVE DAILY EXTREMES***Greatest Rainfall Totals**

Location	Type	Amt	Date
DUNWOODY 1.8 WNW	CoCoRaHS	3.24	2013-10-07
SANDY SPRINGS 3.2 WNW	CoCoRaHS	3.17	2013-10-07
ATLANTA BOLTON	COOP	3.14	2013-10-07
ROSWELL 4.8 SE	CoCoRaHS	3.07	2013-10-07
SMYRNA 2.3 NE	CoCoRaHS	2.91	2013-10-07

Highest Maximum Temperatures

Location	Type	T °	Date
VALDOSTA RGNL AP	WBAN	92.0	2013-10-04
HARTWELL DAM	COOP	91.0	2013-10-06+
BRUNSWICK	COOP	90.0	2013-10-08
MILLEDGEVILLE	COOP	90.0	2013-10-06+
WASHINGTON	COOP	90.0	2013-10-16+

Lowest Minimum Temperatures

Location	Type	T °	Date
LAFAYETTE 5 SW	COOP	25.0	2013-10-25
TOCCOA #1 GEORGIA	RAWS	25.0	2013-10-26
ROME R B RUSSELL AP	WBAN	26.0	2013-10-26
CLEVELAND	COOP	26.0	2013-10-27
CLARKESVILLE	COOP	26.0	2013-10-27

**All data are considered preliminary and are for informational purposes only*