

Total Maximum Daily Load
Evaluation
for
Eight Stream Segments
in the
Ogeechee River Basin
for
Fecal Coliform

Submitted to:
The U.S. Environmental Protection Agency
Region 4
Atlanta, Georgia

Submitted by:
The Georgia Department of Natural Resources
Environmental Protection Division
Atlanta, Georgia

February 2016

Table of Contents

<u>Section</u>	<u>Page</u>
EXECUTIVE SUMMARY	iv
1.0 INTRODUCTION.....	1
1.1 Background.....	1
1.2 Watershed Description	2
1.3 Water Quality Standard	2
2.0 WATER QUALITY ASSESSMENT	6
3.0 SOURCE ASSESSMENT	7
3.1 Point Source Assessment.....	7
3.1.1 Wastewater Treatment Facilities	7
3.1.2 Regulated Stormwater Discharges.....	9
3.1.3 Concentrated Animal Feeding Operations	10
3.2 Nonpoint Source Assessment	11
3.2.1 Wildlife	11
3.2.2 Agricultural Livestock	12
3.2.3 Urban Development.....	13
4.0 ANALYTICAL APPROACH	16
4.1 Loading Curve Approach	16
5.0 TOTAL MAXIMUM DAILY LOADS	19
5.1 Waste Load Allocations	19
5.1.1 Wastewater Treatment Facilities.....	19
5.1.2 Regulated Stormwater Discharges	20
5.1.3 Confined Animal Feeding Operations	21
5.2 Load Allocations	21
5.3 Seasonal Variation	21
5.4 Margin of Safety	22
5.5 Total Fecal Coliform Load.....	22
6.0 RECOMMENDATIONS	25
6.1 Monitoring	25
6.2 Fecal Coliform Management Practices	25
6.2.1 Point Source Approaches	26
6.2.2 Nonpoint Source Approaches	26
6.3 Reasonable Assurance	28
6.4 Public Participation	28
7.0 INITIAL TMDL IMPLEMENTATION PLAN.....	29
7.1 Impaired Segments	29
7.2 Potential Sources	29
7.3 Management Practices and Activities	30
7.4 Monitoring.....	30
7.5 Future Action.....	31
REFERENCES	33

List of Tables

1. Water Bodies Listed on the 2014 303(d) List for Fecal Coliform Bacteria in the Ogeechee River Basin
2. Ogeechee River Basin Land Coverage
3. NPDES Facilities Discharging Fecal Coliform Bacteria into Ogeechee River Basin 303(d) Listed Stream Segments
4. Phase I Permitted MS4s in the Ogeechee River Basin
5. Phase II Permitted MS4s in the Ogeechee River Basin
6. Percentage of MS4 City or County Urbanized Area Upstream of 303(d) Listed Segments in the Ogeechee River Basin
7. Permitted Liquid Manure CAFOs in the Vicinity of 303(d) Listed Segments in the Ogeechee River Basin
8. 2013 Estimated Agricultural Livestock Populations in the Ogeechee River Basin
9. Estimated Number of Septic Systems in the Ogeechee River Basin
10. Landfills in the Vicinity of 303(d) Listed Segments in the Ogeechee River Basin
11. Stream Segments with Estimated Flows and Corresponding USGS Flow Gages
12. WLAs for the Ogeechee River Basin
13. Fecal Coliform Loads and Required Fecal Coliform Load Reductions

List of Figures

USGS 8-Digit HUCs for Ogeechee River Basin
Impaired Stream Segment in HUCs 03060202, 03060203 and 03060204

List of Appendices

- A: 30-day Geometric Mean Fecal Coliform Monitoring Data
- B: Normalized Flows Versus Fecal Coliform Plots

EXECUTIVE SUMMARY

The State of Georgia assesses its water bodies for compliance with water quality standards criteria established for their designated uses as required by the Federal Clean Water Act (CWA). Assessed water bodies are placed into one of three categories, supporting designated use, not supporting designated use, or assessment pending, depending on water quality assessment results. These water bodies are found on Georgia's 305(b) list as required by that section of the CWA that defines the assessment process, and are published in *Water Quality in Georgia* (GA EPD, 2012 – 2013). This document is available on the Georgia Environmental Protection Division (EPD) website.

Some of the 305(b) not supporting water bodies are also assigned to Georgia's 303(d) list, also named after that section of the CWA. Water bodies on the 303(d) list are required to have a Total Maximum Daily Load (TMDL) evaluation for the water quality constituent(s) in violation of the water quality standard. The TMDLs in this document are based on the 2014 303(d) listing, which is available on the EPD website. The TMDL process establishes the allowable pollutant loadings or other quantifiable parameters for a water body based on the relationship between pollutant sources and instream water quality conditions. This allows water quality-based controls to be developed to reduce pollution and restore and maintain water quality.

Every water in the State has one or more designated uses, and each designated use has water quality criteria established to protect it. The State of Georgia has placed eight stream segments in the Ogeechee River Basin on the 303(d) list of impaired waters because they were assessed as "not supporting" their designated use of "Fishing" due to violation of the fecal coliform water quality criteria. The water quality criteria for fecal coliform bacteria for a water with a designated use of fishing are as follows: For the months of May through October, when water contact recreation activities are expected to occur, fecal coliform counts are not to exceed a geometric mean of 200 per 100 mL based on at least four samples collected from a given sampling site over a 30-day period at intervals not less than 24 hours. For the months of November through April, fecal coliform counts are not to exceed a geometric mean of 1,000 per 100 mL based on at least four samples collected from a given sampling site over a 30-day period at intervals not less than 24 hours and not to exceed a maximum of 4,000 per 100 mL for any sample. A water is assessed as "not supporting" its use if more than 10% of the geometric means exceeded the water quality criteria cited above. If no geometric means are available, a water is assessed as "not supporting" its use if more than 10 percent of individual samples exceed the fecal coliform criteria.

An important part of the TMDL analysis is the identification of potential source categories. Sources are broadly classified as either point or nonpoint sources. A point source is defined as a discernable, confined, and discrete conveyance from which pollutants are or may be discharged to surface waters. Nonpoint sources are diffuse, and generally, but not always, involve accumulated fecal coliform bacteria that wash off land surfaces as a result of storm events.

The process of developing fecal coliform bacteria TMDLs for the Ogeechee River Basin listed segments includes the determination of the following:

- The current critical fecal coliform load to the stream under existing conditions;
- The TMDL for similar conditions under which the current critical load was determined; and
- The percent reduction in the current critical fecal coliform load necessary to achieve the TMDL.

The calculation of the fecal coliform load at any point in a stream requires the fecal coliform concentration and stream flow. The availability of water quality and flow data varies considerably among the listed segments. The Loading Curve Approach was used to determine the current fecal coliform load and TMDL. The fecal coliform loads and required reductions for each of the listed segments are summarized in the table below.

Management practices that may be used to help reduce fecal coliform source loads include:

- Compliance with NPDES permit limits and requirements;
- Adoption of NRCS Conservation Practices; and
- Application of Best Management Practices (BMPs) appropriate to reduce nonpoint sources.

The amount of fecal coliform bacteria delivered to a stream is difficult to determine. However, the use of these management practices should improve stream water quality, and future monitoring will provide a measurement of TMDL implementation.

Fecal Coliform Loads and Required Fecal Coliform Load Reductions

Stream Segment	Current Load (counts/ 30 days)	TMDL Components					Percent Reduction
		WLA (counts/ 30 days)	WLASw (counts/ 30 days)	LA (counts/ 30 days)	MOS (counts/ 30 days)	TMDL (counts/ 30 days)	
Canoochee River	7.00E+13	-	5.07E+11	3.76E+13	4.24E+12	4.24E+13	39
Little Lotts Creek	1.38E+12	2.87E+10	-	3.02E+11	3.64E+10	3.64E+11	74
Lotts Creek	1.82E+13	-	-	8.99E+12	9.99E+11	9.99E+12	45
Ogeechee River	9.83E+14	4.83E+10	2.51E+12	5.09E+14	5.68E+13	5.68E+14	42
Salt Creek	4.15E+11	-	6.66E+10	2.59E+11	3.62E+10	3.62E+11	13
Sterling Creek	4.74E+12	-	2.49E+10	3.58E+11	4.25E+10	4.25E+11	91
Taylor's Creek	1.39E+13	-	9.05E+10	1.47E+12	1.73E+11	1.73E+12	88
Wateringhole Branch	8.62E+11	-	-	1.98E+11	2.20E+10	2.20E+11	74

1.0 INTRODUCTION

1.1 Background

The State of Georgia assesses its water bodies for compliance with water quality standards criteria established for their designated uses as required by the Federal Clean Water Act (CWA). Assessed water bodies are placed into one of three categories depending on water quality assessment results, supporting designated use, not supporting designated use, or assessment pending. These water bodies are found on Georgia's 305(b) list as required by that section of the CWA that addresses the assessment process, and are published in *Water Quality in Georgia* (GA EPD, 2012 – 2013). This document is available on the Georgia Environmental Protection Division (EPD) website.

A subset of the water bodies that do not meet designated uses, those in Category 5 on the 305(b) list, are assigned to Georgia's 303(d) list, named after that section of the CWA. Water bodies included in the 303(d) list are required to have a Total Maximum Daily Load (TMDL) evaluation for the water quality constituent(s) in violation of the water quality criteria. The TMDLs in this document are based on the 2014 303(d) listing, which is available on the EPD website. The TMDL process establishes the allowable loading of pollutants or other quantifiable parameters for a water body based on the relationship between pollution sources and in-stream water quality conditions. This allows water quality based controls to be developed to reduce pollution and restore and maintain water quality.

The list identifies the waterbodies that are not supporting their designated use classifications due to exceedances of water quality standards for fecal coliform bacteria. Fecal coliform bacteria are used as an indicator of the potential presence of pathogens in a stream. Table 1 presents the eight streams in the Ogeechee River Basin included on the 2014 303(d) list for exceedances of the fecal coliform standard criteria.

Table 1. Water Bodies Listed on the 2014 303(d) List for Fecal Coliform Bacteria in the Ogeechee River Basin

Stream Segment	Location	Reach ID	Segment Length (miles)	Designated Use
Canoochee River	Savage Creek to Ogeechee River	R030602030603	18	Fishing
Little Lotts Creek	Unnamed tributary @ Burkhalter Road to Lotts Creek	R030602030313	8	Fishing
Lotts Creek	U.S. Hwy. 301 to Little Lotts Creek near Register	R030602030310	8	Fishing
Ogeechee River	Black Creek to Richmond Hill	R030602040305	21	Fishing
Salt Creek	Headwaters to Hardin Canal	R030602040212	1	Fishing
Sterling Creek	Headwaters to the Ogeechee River	R030602040307	9	Fishing
Taylor's Creek	Upstream WPCP Drainage Canal, Fort Stewart	R030602030505	3	Fishing
Wateringhole Branch	Granna Branch to Dry Branch	R030602030311	5	Fishing

1.2 Watershed Description

The Ogeechee River Basin is located in mid to southeastern Georgia, encompassing approximately 5,540 square miles. It is bordered by the Oconee and Altamaha River Basins to the west and the Savannah River Basin to the east. The Ogeechee River originates in Greene County, in central Georgia. The headwaters of the Ogeechee River consist of the North and South Forks, which join to form the mainstem. The River then flows approximately 245 miles southeast to the Atlantic Ocean. The Canoochee River originates in Emanuel County and flows southeast to join the Ogeechee River near Richmond Hill. The Ogeechee River Basin contains parts of the Piedmont and Coastal Plain physiographic provinces, which extend throughout the southeastern United States.

The United States Geologic Survey (USGS) has divided the Ogeechee basin into four sub-basins, or Hydrologic Unit Codes (HUCs). These are numbered as HUCs 03060201 through 03060204. Figure 1 shows the locations of these sub-basins, and Figure 2 shows the sub-basins with impaired stream segments.

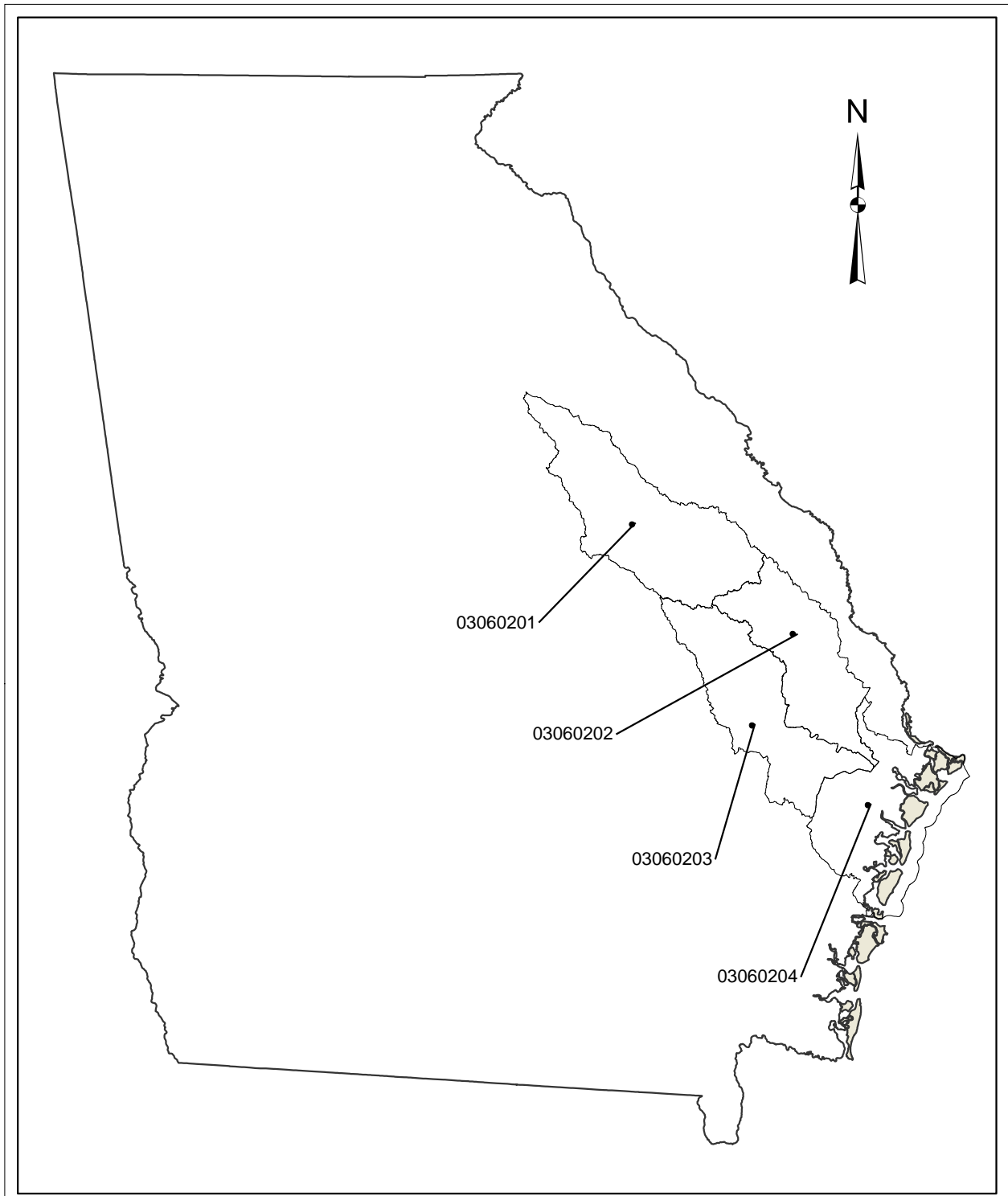
The land use characteristics of the Ogeechee River Basin watersheds were determined using data from the Georgia Land Use Trends (GLUT) for Year 2008. This raster land use trend product was developed by the University of Georgia – Natural Resources Spatial Analysis Laboratory (NARSAL) and follows land use trends for years 1974, 1985, 1991, 1998, 2001, 2005 and 2008. The raster data sets were developed from Landsat Thematic Mapper (TM) and Enhanced Thematic Mapper Plus (ETM+). Some of the NARSAL land use types were reclassified, aggregated into similar land use types, and used in the final watershed characterization. Table 2 lists the watershed land use distribution for the drainage areas of the eight stream segments.

1.3 Water Quality Standard

The water use classification for the listed stream segments in the Ogeechee River Basin is Fishing. The criterion violated is listed as fecal coliform. The potential causes listed include urban runoff, nonpoint sources, and municipal facilities. The use classification water quality standards for fecal coliform bacteria, as stated in the *State of Georgia's Rules and Regulations for Water Quality Control*, Chapter 391-3-6-.03(6)(c)(iii) (GA EPD, 2013), are:

(c) Fishing: Propagation of Fish, Shellfish, Game and Other Aquatic Life; secondary contact recreation in and on the water; or for any other use requiring water of a lower quality:

(iii) Bacteria: For the months of May through October, when water contact recreation activities are expected to occur, fecal coliform not to exceed a geometric mean of 200 per 100 mL based on at least four samples collected from a given sampling site over a 30-day period at intervals not less than 24 hours. Should water quality and sanitary studies show fecal coliform levels from non-human sources exceed 200/100 mL (geometric mean) occasionally, then the allowable geometric mean fecal coliform shall not exceed 300 per 100 mL in lakes and reservoirs and 500 per 100 mL in free flowing freshwater streams. For the months of November through April, fecal coliform not to exceed a geometric mean of 1,000 per 100 mL based on at least four samples collected from a given sampling site over a 30-day period at intervals not less than 24 hours and not to exceed a maximum of 4,000 per 100 mL for any sample. The State does not encourage swimming in surface waters since a number of factors which are beyond the control of any State regulatory agency contribute to elevated levels of fecal coliform. For waters designated as shellfish growing areas by the Georgia DNR Coastal Resources Division, the requirements will be consistent with those established by the State and Federal agencies responsible for the National Shellfish Sanitation Program. The requirements are found in National Shellfish Sanitation Program Guide for the Control of Molluscan Shellfish, 2007 Revision (or most recent version), Interstate Shellfish Sanitation Conference, U.S. Food and Drug Administration.



TMDL Evaluation - Fecal Coliform
Ogeechee River Basin

Figure 1. USGS 8-Digit Hucs for
Ogeechee River Basin

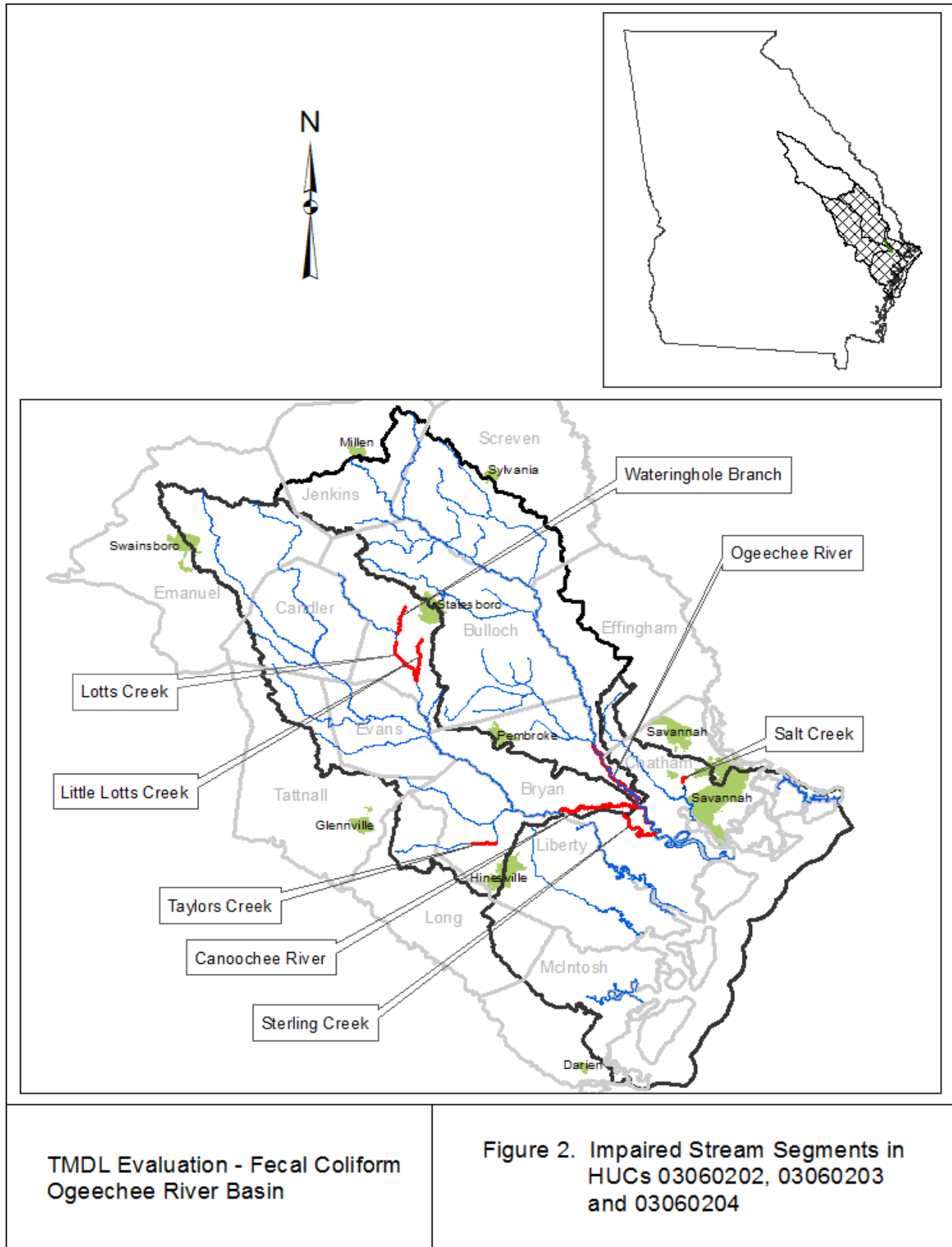


Table 2. Ogeechee River Basin Land Coverage

Stream/Segment	Land Use Categories - Acres (Percent)													Total
	Open Water	Low Intensity Residential	High Intensity Residential	High Intensity Commercial, Industrial, Transportation	Bare Rock, Sand, Clay	Quarries, Strip Mines, Gravel Pits	Transitional	Forest	Row Crops	Pasture, Hay	Other Grasses (Urban, recreational; e.g. parks, lawns)	Woody Wetlands	Emergent Herbaceous Wetlands	
Canoochee River	6,739	20,587	6,204	3,033	1,969	0	34,190	365,885	179,554	31,582	43,526	191,483	2,881	887,632
	0.8%	2.3%	0.7%	0.3%	0.2%	0.0%	3.9%	41.2%	20.2%	3.6%	4.9%	21.6%	0.3%	100.0%
Little Lotts Creek	123	1,895	972	927	46	0	452	4,664	5,911	837	1,730	4,065	91	21,713
	0.6%	8.7%	4.5%	4.3%	0.2%	0.0%	2.1%	21.5%	27.2%	3.9%	8.0%	18.7%	0.4%	100.0%
Lotts Creek	1,488	2,553	590	290	331	0	2,878	26,185	36,062	5,224	4,920	18,429	488	99,440
	1.5%	2.6%	0.6%	0.3%	0.3%	0.0%	2.9%	26.3%	36.3%	5.3%	4.9%	18.5%	0.5%	100.0%
Ogeechee River	18,238	52,071	12,670	4,792	4,444	408	122,783	1,264,417	564,115	119,797	122,202	532,918	9173	2,828,028
	0.6%	1.8%	0.4%	0.2%	0.2%	0.01%	4.3%	44.7%	19.9%	4.2%	4.3%	18.8%	0.3%	100.0%
Salt Creek	102	1022	533	285	43	44	656	2,229	364	47	1,043	2,995	523	9,886
	1.0%	10.3%	5.4%	2.9%	0.4%	0.4%	6.6%	22.5%	3.7%	0.5%	10.5%	30.3%	5.3%	100.0%
Sterling Creek	102	890	388	207	22	0	856	7,843	388	84	1,045	6,046	108	17,979
	0.6%	5.0%	2.2%	1.2%	0.1%	0.0%	4.8%	43.6%	2.2%	0.5%	5.8%	33.6%	0.6%	100.0%
Taylors Creek	57	2,655	1,031	701	30	0	3,403	30,938	4,420	1,330	4,017	21,291	125	69,998
	0.1%	3.8%	1.5%	1.0%	0.04%	0.0%	4.9%	44.2%	6.3%	1.9%	5.7%	30.4%	0.2%	100.0%
Wateringhole Branch	147	659	105	124	46	0	313	3,278	3,497	598	1,250	2,231	48	12,295
	1.2%	5.4%	0.9%	1.0%	0.4%	0.0%	2.5%	26.7%	28.4%	4.9%	10.2%	18.1%	0.4%	100.0%

2.0 WATER QUALITY ASSESSMENT

Stream segments are placed on the 303(d) list as not supporting their water use classification based on water quality sampling data. A stream is placed on this list if more than 10% of the samples exceed the fecal coliform criteria. Water quality samples collected within a 30-day period that have a geometric mean in excess of 200 counts per 100 milliliters during the period May through October, or in excess of 1000 counts per 100 milliliters during the period November through April, are in violation of the bacteria water quality standard. There is also a single sample maximum criterion (4000 counts per 100 milliliters) for the months of November through April.

Fecal coliform data used for TMDLs developed in this document were collected during calendar years 2005, 2007 and 2010 through 2013 by EPD as part of the trend monitoring program. Additional earlier data is also included when available. These data are presented in Appendix A.

3.0 SOURCE ASSESSMENT

An important part of the TMDL analysis is the identification of potential source categories. Sources are broadly classified as either point or nonpoint sources. A point source is defined as a discernable, confined, and discrete conveyance from which pollutants are or may be discharged to surface waters. Nonpoint sources are diffuse, and generally, but not always, involve accumulation of fecal coliform bacteria on land surfaces that wash off as a result of storm events.

3.1 Point Source Assessment

Title IV of the Clean Water Act establishes the National Pollutant Discharge Elimination System (NPDES) permit program. There are two basic kinds of NPDES permits: 1) municipal and industrial wastewater treatment facilities, and 2) regulated stormwater discharges.

3.1.1 Wastewater Treatment Facilities

In general, municipal and industrial wastewater treatment facilities have NPDES permits with effluent limits. These permit limits are either based on federal and state effluent guidelines (technology-based limits) or on water quality standards (water quality-based limits).

The United States Environmental Protection Agency (USEPA) has developed technology-based guidelines, which establish a minimum standard of pollution control for municipal and industrial discharges without regard for the quality of the receiving waters. These are based on Best Practical Control Technology Currently Available (BPT), Best Conventional Control Technology (BCT), and Best Available Technology Economically Achievable (BAT). The level of control required by each facility depends on the type of discharge and the pollutant.

The USEPA and the states have also developed numeric and narrative water quality standards. Typically, these standards are based on the results of aquatic toxicity tests and/or human health criteria and include a margin of safety. Water quality-based effluent limits are set to protect the receiving stream. These limits are based on water quality standards that have been established for a stream based on its intended use and the prescribed biological and chemical conditions that must be met to sustain that use.

Discharges from municipal and industrial wastewater treatment facilities can contribute fecal coliform to receiving waters. There are three NPDES permitted discharges with a flow greater than 0.1 MGD identified in the Ogeechee River Basin that could potentially impact streams on the 2014 303(d) list for fecal coliform bacteria. Table 3 provides the monthly average discharge flow and fecal coliform concentrations for these facilities. This data was obtained from calendar year 2013 Discharge Monitoring Reports (DMR). The permitted fecal coliform concentration is also included in this table.

Combined sewer systems convey a mixture of raw sewage and stormwater in the same conveyance structure to the wastewater treatment plant. These are considered a component of municipal wastewater treatment facilities. When the combined sewage exceeds the capacity of the wastewater treatment plant, the excess is diverted to a combined sewage overflow (CSO) discharge point. There are no permitted CSO outfalls in the Ogeechee River Basin.

Table 3. NPDES Facilities Discharging Fecal Coliform Bacteria into Ogeechee River Basin 303(d) Listed Stream Segments

Facility Name	NPDES Permit No.	Receiving Stream	303(d) Listed Segment	Actual 2013 Discharge		NPDES Permit Limits		Number of Fecal Coliform/Flow Violations ^c 2011–2013
				Average Monthly Flow (MGD) ^a	Average Monthly FC (No./100mL) ^b	Average Monthly Flow (MGD)	Average Monthly FC (No./100mL)	
Statesboro WPCP	GA0023108	Little Lotts Creek	Little Lotts Creek	4.74	22.08	10	200	0
Savannah - Georgetown WPCP	GA0046418	Ogeechee River	Ogeechee River	1.64	2.92	2.45	25	0
Richmond Hill - Elbow Swamp WPCP	GA0037648	Elbow Swamp	Sterling Creek	1.48	N/A	1.5	N/A	8

Source: EPD

- Notes: ^a Values shown are the annual average of the monthly average flows.
^b Values shown are the annual average of the monthly geometric means.
^c Both monthly and weekly violations included.

3.1.2 Regulated Stormwater Discharges

Some stormwater runoff is covered under the NPDES Permit Program as a point source. Some industrial facilities included under the program will have limits similar to traditional NPDES-permitted dischargers, whereas others establish controls: “to the maximum extent practicable” (MEP). Currently, regulated stormwater discharges that may contain fecal coliform bacteria consist of those associated with industrial activities and large, medium, and small municipal separate storm sewer systems (MS4s) that serve populations of 50,000 or more.

3.1.2.1 Industrial General Stormwater NPDES Permit

Stormwater discharges associated with industrial activities are currently covered under the 2012 General Storm Water NPDES Permit (GAR050000), also called the Industrial General Permit (IGP). This permit requires visual monitoring of stormwater discharges, site inspections, implementation of Best Management Practices (BMPs), and record keeping. The IGP requires that stormwater discharging into an impaired stream segment or within one linear mile upstream of, and within the same watershed as, any portion of an impaired stream segment identified as “not supporting” its designated use(s), must satisfy the requirements of Appendix C of the 2012 IGP if the pollutant(s) of concern for which the impaired stream segment has been listed may be exposed to stormwater as a result of industrial activity at the site. If a facility is covered under Appendix C of the IGP, then benchmark monitoring for the pollutant(s) of concern is required.

3.1.2.2 MS4 NPDES Permits

Stormwater discharges from MS4s are very diverse in pollutant loadings and frequency of discharge. At present, all cities and counties within the state of Georgia that had a population of greater than 100,000 at the time of the 1990 Census are permitted for their stormwater discharge under Phase I. This includes 58 permittees in Georgia.

Phase I MS4 permits require the prohibition of non-stormwater discharges (i.e., illicit discharges) into the storm sewer systems and controls to reduce the discharge of pollutants to the maximum extent practicable, including the use of management practices, control techniques and systems, as well as design and engineering methods (Federal Register, 1990). A site-specific Stormwater Management Plan (SWMP) outlining appropriate controls is required by and referenced in the permit. There are 7 Phase I MS4s in the Ogeechee River Basin (Table 4).

Table 4. Phase I Permitted MS4s in the Ogeechee River Basin

Name	Permit No.	Watershed
Bloomingtondale	GAS000207	Ogeechee, Savannah
Chatham County	GAS000206	Ogeechee, Savannah
Garden City	GAS000208	Ogeechee, Savannah
Pooler	GAS000209	Ogeechee, Savannah
Savannah	GAS000205	Ogeechee, Savannah
Thunderbolt	GAS000210	Ogeechee
Tybee Island	GAS000212	Ogeechee, Savannah

Source: Nonpoint Source Program, GA EPD, 2014

Small MS4s serving urbanized areas are required to obtain a stormwater permit under the Phase II stormwater regulations. The urbanized areas are defined by the U.S. Census Bureau. Thirty-five counties, 73 cities, 5 Department of Defense facilities and the Georgia Department of Transportation (DOT) are permitted under the Phase II regulations in Georgia. In addition to the DOT, which is located in all river basins, there are 8 Phase II MS4s in the Ogeechee River Basin (Table 5).

Table 5. Phase II Permitted MS4s in the Ogeechee River Basin

Name	Watershed
Allenhurst	Ogeechee
Fleming	Ogeechee
Fort Stewart	Ogeechee
Hinesville	Ogeechee
Hunter Army Airfield	Ogeechee
Richmond Hill	Ogeechee
Vernonburg	Ogeechee
Walthourville	Ogeechee

Source: Nonpoint Source Program, GA EPD, 2014

Table 6 lists the Phase I or Phase II MS4 city or county urbanized areas upstream of listed segments in the Ogeechee River Basin. The table provides the total area of this watershed and the percentage of the watershed that is MS4 city or county urbanized area.

Table 6. Percentage of MS4 City or County Urbanized Area Upstream of 303(d) Listed Segments in the Ogeechee River Basin

Stream Segment	Location	Total Area (square miles)	% In MS4 Urbanized Area
Canoochee River	Savage Creek to Ogeechee River	1,386.92	1.9%
Ogeechee River	Black Creek to Richmond Hill	4,418.79	0.7%
Salt Creek	Headwaters to Hardin Canal	15.45	29.2%
Sterling Creek	Headwaters to the Ogeechee River	28.09	9.3%
Taylor's Creek	Upstream WPCP Drainage Canal, Fort Stewart	109.37	8.3%

3.1.3 Concentrated Animal Feeding Operations

Under the Clean Water Act, Concentrated Animal Feeding Operations (CAFOs) are defined as point sources of pollution and are therefore subject to NPDES permit regulations. From 1999 through 2001, Georgia adopted rules for permitting swine and non-swine liquid manure animal feeding operations (AFOs). Georgia rules required medium size AFOs with more than 300 animal units (AU) but less than 1,000 AU to apply for a non-discharge State land application system (LAS) waste disposal permit. Large operations with more than 1000 AU were required to apply for an NPDES permit (also non-discharge) as a CAFO. The USEPA CAFO regulations were successfully appealed in 2005. They were revised to comply with the court's decision that NPDES permits only be required for actual discharges. Georgia's rules were amended on August 7, 2012 to reflect the USEPA revisions. The revised state rules will continue LAS permitting of medium size liquid manure AFOs and extend LAS permitting to large liquid manure AFOs with more than 1,000 AU, unless they elect to obtain an NPDES permit. Table 7 presents the swine and non-swine liquid manure CAFOs located in the vicinity of the listed segments in the Ogeechee River Basin that have NPDES or land application permits.

Table 7. Permitted Liquid Manure CAFOs in the Vicinity of 303(d) Listed Segments in the Ogeechee River Basin

Name	303(d) Listed Stream Segment	County	Animal Type	Total Number of Animals	Permit No.
C - M Farms Orangeburg Foods Inc	Lotts Creek	Candler	Swine	2,382	GAU700000
Smith / Healy Farms, Inc.	Lotts Creek	Bulloch	Swine	4,577	GA0038199
W.W. Ball Farms	Wateringhole Branch	Bulloch	Swine	300	GAU700000

Source: GA Dept. of Agriculture, 2014

In 2002, the USEPA promulgated expanded NPDES permit regulations for CAFOs that added dry manure poultry operations larger than 125,000 broilers or 82,000 layers. In accordance with the Georgia rule amendment discussed above, the general permit covering these facilities has been terminated and they are no longer covered under any permit. Georgia is consistently among the top three states in the U.S. in terms of poultry operations. The majority of poultry farms are dry manure operations where the manure is stored for a time and then land applied. Freshly stored litter can be a nonpoint source of fecal coliform. However, land applied litter that was previously stored for an extended length of time typically exhibits very low fecal coliform levels. There are no known dry manure poultry operations located in the vicinity of the listed segments in the Ogeechee River Basin.

3.2 Nonpoint Source Assessment

In general, nonpoint sources cannot be identified as entering a waterbody through a discrete conveyance at a single location. Typical nonpoint sources of fecal coliform bacteria include:

- Wildlife
- Agricultural Livestock
 - Animal grazing
 - Animal access to streams
 - Application of manure to pastureland and cropland
- Urban Development
 - Leaking sanitary sewer lines
 - Leaking septic systems
 - Land Application Systems
 - Landfills

In urban areas, a large portion of stormwater runoff may be collected in storm sewer systems and discharged through distinct outlet structures. For large urban areas, these storm sewer discharge points may be regulated as described in Section 3.1.2.

3.2.1 Wildlife

The significance of wildlife as a source of fecal coliform bacteria in streams varies considerably depending on the animal species present in the watershed. Based on information provided by the Wildlife Resources Division (WRD) of GA DNR, the greatest wildlife sources of fecal coliform are the animals that spend a large portion of their time in or around aquatic habitats. Of these, waterfowl, especially ducks and geese, are considered to be the most significant source, because when present, they are typically found in large numbers on the water surface. Other

animals regularly found around aquatic environments include racoons, beavers, muskrats, and to a lesser extent, river otters and minks. Recently, rapidly expanding feral swine populations have become a substantial presence in the floodplain areas of the major rivers in Georgia.

White-tailed deer populations are abundant throughout the Ogeechee River Basin. Fecal coliform bacteria contributions to water bodies from deer are generally considered to be less significant than that of waterfowl, racoons, and beavers. This is because a greater portion of their time is spent in terrestrial habitats. This also holds true for other terrestrial mammals such as squirrels and rabbits, and for terrestrial birds (GA WRD, 2007). However, feces deposited on the land surface can result in the introduction of fecal coliform to streams during runoff events. Between storm events, considerable decomposition of the fecal matter might occur, resulting in a decrease in the associated fecal coliform numbers.

3.2.2 Agricultural Livestock

Agricultural livestock are a potential source of fecal coliform to streams in the Ogeechee River Basin. The animals grazing on pastureland deposit their feces onto land surfaces, where it can then be transported during storm events to nearby streams. Animal access to pastureland varies monthly, resulting in varying fecal coliform loading rates throughout the year. Beef cattle spend all of their time in pastures, while dairy cattle and hogs are periodically confined. In addition, agricultural livestock will often have direct access to streams that pass through their pastures, and can thus impact water quality in a more direct manner (USDA, 2002).

Table 8 provides the estimated number of beef cattle, dairy cattle, goats, horses, swine, sheep, and chickens reported by county.

Table 8. Estimated Agricultural Livestock Populations in the Ogeechee River Basin

County	Livestock							
	Beef Cattle	Dairy Cattle	Swine	Sheep	Horses	Goats	Chickens Layers	Chickens-Broilers Sold
Bryan	250	-	-	-	150	-	-	-
Bulloch	12,000	-	-	100	400	2,450	-	4,792,320
Burke	10,000	6,400	-	100	500	1,300	-	-
Candler	2,100	-	300	75	30	500	-	240,000
Chatham	-	-	-	-	-	-	-	-
Effingham	3,500	-	750	-	500	1,000	-	-
Emanuel	8,000	-	-	-	500	2,100	-	-
Evans	3,750	-	-	25	25	150	-	8,823,816
Glascocok	3,800	-	120	220	430	850	-	-
Greene	8,787	2,600	-	50	285	300	-	7,372,800
Hancock	3,650	-	-	80	370	850	-	-
Jefferson	4,500	3,100	120	20	30	700	-	-
Jenkins	2,897	875	-	224	12	383	-	-
Liberty	725	-	-	-	50	200	-	-
Long	1,600	-	60	25	350	500	-	4,204,032
McIntosh	-	-	-	-	-	-	-	-
Screven	6,000	750	-	100	-	1,000	500	-
Taliaferro	-	-	-	-	-	-	-	-
Tattnall	11,000	-	-	600	150	1,500	-	47,162,880
Warren	5,450	700	250	225	1,150	1,800	-	-
Washington	3,800	750	-	30	600	1,100	-	-

Source: Center for Agribusiness and Economic Development, 2014

3.2.3 Urban Development

Fecal coliform bacteria from urban areas are attributable to multiple sources, including: domestic animals, leaks and overflows from sanitary sewer systems, illicit discharges, leaking septic systems, runoff from improper disposal of waste materials, and leachate from both operational and closed landfills.

Urban runoff can contain high concentrations of fecal coliform from domestic animals and urban wildlife. Fecal coliform bacteria enter streams by direct washoff from the land surface, or the runoff may be diverted to a stormwater collection system and discharged through a discrete outlet structure. For large, medium, and small urban areas (populations greater than 50,000), the stormwater outlets are regulated under MS4 permits (see Section 3.1.2). For smaller urban areas, the stormwater discharge outlets currently remain unregulated.

In addition to urban animal sources of fecal coliform, there may be illicit connections to the storm sewer system. As part of the MS4 permitting program, municipalities are required to conduct dry-weather monitoring to identify and then eliminate these illicit discharges. Fecal coliform bacteria may also enter streams from leaky sewer pipes, or during storm events when inflow and infiltration can cause sewer overflows.

3.2.3.1 Leaking Septic Systems

A portion of the fecal coliform contributions in the Ogeechee River Basin may be attributed to failure of septic systems and illicit discharges of raw sewage. Table 9 presents the number of septic systems in each county of the Ogeechee River Basin existing at the end of 2008 and the number existing at the end of 2013. This is based on data provided by the Georgia Department of Human Resources, Division of Public Health, and information obtained from the U.S. Census. In addition, an estimate of the number of septic systems installed and repaired during the period from 2009 through 2013 is given. These data show an increase in the number of septic systems in all of the counties. Often, this is a reflection of population increases outpacing the expansion of sewage collection systems.

Table 9. Estimated Number of Septic Systems in the Ogeechee River Basin

County	Existing Septic Systems (2008)	Existing Septic Systems (2013)	Number of Septic Systems Installed (2009 to 2013)	Number of Septic Systems Repaired (2009 to 2013)
Bryan	9,800	10,385	585	261
Bulloch	20,788	21,636	848	430
Burke	11,421	11,807	386	130
Candler	2,791	2,938	147	50
Chatham	15,177	15,366	189	86
Effingham	17,474	18,161	687	307
Emanuel	8,110	8,405	295	239
Evans	3,734	3,897	163	26
Glascocock	1,165	1,231	66	15
Greene	5,972	6,239	267	42
Hancock	4,536	4,674	138	22
Jefferson	5,633	5,792	159	59
Jenkins	2,155	2,236	81	11
Liberty	11,455	11,819	364	53
Long	5,112	6,017	905	62
McIntosh	3,135	3,395	260	90
Screven	8,069	8,280	211	70
Taliaferro	805	846	41	5
Tattnall	7,336	7,739	403	97
Warren	2,038	2,099	61	19
Washington	6,722	6,949	227	131

Source: The Georgia Dept. of Public Health, Environmental Health Section, 2014

3.2.3.2 Land Application Systems

Some communities and industries use land application systems (LAS) for wastewater disposal. These facilities are required through LAS permits to dispose of their treated wastewater by land application, and to operate as non-discharging systems, that do not contribute wastewater runoff to surface waters. However, sometimes the soil's percolation rate is exceeded when applying the wastewater, or encountering excess precipitation, resulting in runoff. This runoff could contribute fecal coliform bacteria to nearby surface waters. Runoff of stormwater might also carry surface residual containing fecal coliform bacteria. There are no permitted LAS systems with flows greater than 0.1 MGD identified in the Ogeechee River Basin that could potentially impact the stream segments in this TMDL.

3.2.3.3 Landfills

Leachate from landfills may contain fecal coliform bacteria that could at some point reach surface waters. Sanitary (or municipal) landfills are the most likely to serve as a source of fecal coliform bacteria. These types of landfills receive household wastes, animal manure, offal, hatchery and poultry processing plant wastes, dead animals, and other types of wastes. Older sanitary landfills were not lined and most have been closed. Those that remain active and have not been lined operate as construction/demolition landfills. Currently active sanitary landfills are

lined and have leachate collection systems. All landfills, excluding inert landfills, are now required to install environmental monitoring systems for groundwater and methane sampling. There are 107 known landfills in the Ogeechee River Basin. Of these, 13 are active landfills, 3 are in closure and 90 are inactive or closed. Table 10 presents the landfills that are in the vicinity of the 303(d) listed stream segments.

Table 10. Landfills in the Vicinity of 303(d) Listed Segments in the Ogeechee River Basin

Name	303(d) Listed Stream Segment	County	Permit No.	Status
Bryan Co. - Northwest	Canooshee River	Bryan	-	Inactive
City of Hinesville		Liberty	089-008D(L)	Inactive
Evans County - Little Bull Creek		Evans	APL-0542	Inactive
Grovetown (or Groveland)		Bryan	-	Inactive
Hinesville (new site)		Liberty	-	Inactive
Hinesville (old site)		Liberty	-	Inactive
Liberty Co. - CR 194 #3		Liberty	089-014P(INC)	Inactive
Liberty Co. - Hinesville (Liberty	-	Inactive
Liberty County - CR 194 No. 3		Liberty	089-011D(L)	Closed
Pembroke (old site)		Bryan	-	Inactive
Tac - X - Ft. Stewart		Bryan	-	Inactive
U.S. Army - Ft. Stewart Main Cant		Liberty	089-010D(SL)	Operating
U.S. Army - Ft. Stewart Main Cant		Liberty	089-020D(L)	Operating
Portal		Lotts Creek	Bulloch	-
Bryan Co. - Hwy 204	Ogeechee River	Bryan	-	Inactive
Bryan County -US 280 / Mill Creek		Bryan	015-004D(SL)	Closed
Effingham County - SR 17 Guyton		Effingham	051-005D(SL)	In-closur
Ellabell		Bryan	-	Inactive
Guyton		Effingham	-	Inactive
Lanier		Bryan	-	Inactive
Pembroke (new site)		Bryan	-	Inactive
Stilson		Bulloch	-	Inactive
Yarbrough		Effingham	-	Inactive
Chatham County - Sharon Park		Salt Creek	Chatham	025-057D(L)
Clay - Ric - US 80/ Dean Forest R	Chatham		025-065D(L)	Closed
Clifton - Site #3 (Hwy 17)	Chatham		025-044D(L)	Inactive
Garrett-Kelly Hill Road (LI)	Chatham		025-053D(LI)	Operating
MacMillan - Dean Forest Rd.	Chatham		025-066D(L)	Inactive
Savannah	Chatham		025-004D(SL)	Inactive
Savannah - Dean Forest Road	Chatham		025-051D(SL)	Inactive
Savannah - U.S. 17	Chatham		025-043D(SL)	Inactive
Savannah Phase II and III	Chatham		025-021D(SL)	Inactive
Bryan Co. - Richmond Hill	Sterling Creek	Bryan	-	Inactive
City of Hinesville	Taylors Creek	Liberty	089-008D(L)	Inactive
Hinesville (new site)		Liberty	-	Inactive
Hinesville (old site)		Liberty	-	Inactive
Liberty Co. - CR 194 #3		Liberty	089-014P(INC)	Inactive
Liberty Co. - Hinesville		Liberty	-	Inactive
Liberty County - CR 194 No. 3		Liberty	089-011D(L)	Closed
U.S. Army - Ft. Stewart Main Cant		Liberty	089-010D(SL)	Operating
U.S. Army - Ft. Stewart Main Cant		Liberty	089-020D(L)	Operating

Source: Land Protection Branch, GA DNR, 2014

4.0 ANALYTICAL APPROACH

The process of developing fecal coliform TMDLs for the Ogeechee River Basin listed segments includes the determination of the following:

- The current critical fecal coliform load to the stream under existing conditions;
- The TMDL for similar conditions under which the current load was determined; and
- The percent reduction in the current critical fecal coliform load necessary to achieve the TMDL.

The calculation of the fecal coliform load at any point in a stream requires the fecal coliform concentration and stream flow. The Loading Curve Approach was used to determine the current fecal coliform load and the TMDL. For the listed segments, fecal coliform sampling data were sufficient to calculate at least one 30-day geometric mean to compare with the regulatory criteria (see Appendix A).

4.1 Loading Curve Approach

For those segments in which sufficient water quality data were collected to calculate at least one 30-day geometric mean that was above the regulatory standard, the loading curve approach was used. This method involves comparing the current critical load to summer and winter seasonal TMDL curves.

The available field measurements and water quality data used to develop the TMDLs for this document did not include stream flow data. Therefore, stream flows for these sites were estimated using data from a nearby USGS gaged stream. The nearby stream had relatively similar watershed characteristics, including landuse, slope, and drainage area. The stream flows were estimated by multiplying the gaged flow by the ratio of the listed stream drainage area to the gaged stream drainage area. Table 11 provides the USGS stream gages used to estimate the flows for each of the listed stream segments.

Table 11. Stream Segments with Estimated Flows and Corresponding USGS Flow Gages

Stream Segment	Location	USGS Station Name	Station No.
Canooshee River	Savage Creek to Ogeechee River	Canooshee River near Claxton, GA (2001-2007)	02203000
		Canooshee River at Bridge 38, at Fort Stewart, GA (2010)	02203518
Little Lotts Creek	Unnamed tributary at Burkhalter Rd to Lotts Creek	Beaverdam Creek near Sardis, GA	02198100
Lotts Creek	U.S. Hwy. 301 to Little Lotts Creek near Register	Black Creek near Blichton, GA (2007)	02202600
		Ebenezer Creek at Springfield, GA	02198690
Ogeechee River	Black Creek to Richmond Hill	Ogeechee River near Eden, GA	02202500
Salt Creek	Headwaters to Hardin Canal	Ebenezer Creek at Springfield, GA	02198690
Sterling Creek	Headwaters to the Ogeechee River	Black Creek near Blichton, GA (2007)	02202600
		Peacock Creek at McIntosh, GA (2012)	02203559
Taylors Creek	Upstream WPCP Drainage Canal, Fort Stewart	Canooshee River near Claxton, GA (2007-2011)	02203000
		Peacock Creek at McIntosh, GA (2012)	02203559
Wateringhole Branch	Granna Branch to Dry Branch	Beaverdam Creek near Sardis, GA	02198100

The current critical loads were determined using fecal coliform data collected within a 30-day period to calculate the geometric means, and multiplying these values by the arithmetic means of the flows measured at the time the water quality samples were collected. Georgia's instream fecal coliform standards are based on a geometric mean of samples collected over a 30-day period, with samples collected at least 24 hours apart. To reflect this in the load calculation, the fecal coliform loads are expressed as 30-day accumulated loads with units of counts per 30 days. This is described by the equation below:

$$L_{\text{critical}} = C_{\text{geomean}} \times Q_{\text{mean}}$$

Where:

- L_{critical} = current critical fecal coliform load
- C_{geomean} = fecal coliform concentration as a 30-day geometric mean
- Q_{mean} = stream flow as an arithmetic mean

The current estimated critical load is dependent on the fecal coliform concentrations and stream flows measured during the sampling events. The number of events sampled is usually 16 per year. Thus, these loads do not represent the full range of flow conditions or loading rates that can occur. Therefore, it must be kept in mind that the current critical loads used only represent the worst-case scenario that occurred during the sampling period.

The maximum fecal coliform load at which the instream fecal coliform criteria will be met can be determined using a variation of the equation above. By setting C equal to the seasonal, instream fecal coliform standard, the load will equal the TMDL. However, the TMDL is dependent on stream flow. Figures in Appendix A graphically illustrate that the TMDL is a continuum for the range of flows (Q) that can occur in the stream over time. There are two TMDL curves shown in these figures. One represents the summer TMDL for the period May through October when the 30-day geometric mean standard is 200 counts/100 mL. The second curve represents the winter TMDL for the period November through April when the 30-day geometric mean standard is 1,000 counts/100 mL. The equations for these two TMDL curves are:

$$\text{TMDL}_{\text{summer}} = 200 \text{ counts (as a 30-day geometric mean)}/100 \text{ mL} \times Q$$

$$\text{TMDL}_{\text{winter}} = 1,000 \text{ counts (as a 30-day geometric mean)}/100 \text{ mL} \times Q$$

The graphs show the relationship between the current critical load (L_{critical}) and the TMDL. The TMDL for a given stream segment is the load for the mean flow corresponding to the current critical load. This is the point where the current load exceeds the TMDL curve by the greatest amount. This critical TMDL can be represented by the following equation:

$$\text{TMDL}_{\text{critical}} = C_{\text{standard}} \times Q_{\text{mean}}$$

Where:

- $\text{TMDL}_{\text{critical}}$ = critical fecal coliform TMDL load
- C_{standard} = seasonal fecal coliform standard (as a 30-day geometric mean)
 - summer - 200 counts/100 mL
 - winter - 1,000 counts/ 100 mL
- Q_{mean} = stream flow as an arithmetic mean

A 30-day geometric mean load that plots above the respective seasonal TMDL curve represents an exceedance of the instream fecal coliform standard. The difference between the current critical load and the TMDL curve represents the load reduction required for the stream segment to meet the appropriate instream fecal coliform standard. There is also a single sample maximum criterion (4,000 counts per 100 milliliters) for the months of November through April. If a single sample exceeds the maximum criterion, and the seasonal geometric mean criteria is also exceeded, then the TMDL is based on the criteria exceedance requiring the largest load reduction. The percent load reduction can be expressed as follows:

$$\text{Percent Load Reduction} = \frac{L_{\text{critical}} - \text{TMDL}_{\text{critical}}}{L_{\text{critical}}} \times 100$$

5.0 TOTAL MAXIMUM DAILY LOADS

A Total Maximum Daily Load (TMDL) is the amount of a pollutant that can be assimilated by the receiving waterbody without exceeding the applicable water quality standard. In this case it is the seasonal fecal coliform bacteria standard. A TMDL is the sum of the individual waste load allocations (WLAs) for point sources and load allocations (LAs) for nonpoint sources, as well as natural background (40 CFR 130.2) for a given waterbody. The TMDL must also include a margin of safety (MOS), either implicitly or explicitly, that accounts for the uncertainty in the relationship between pollutant loads and the water quality response of the receiving water body. TMDLs can be expressed in terms of either mass per time, toxicity, or other appropriate measures. For fecal coliform bacteria, the TMDLs are expressed as counts per 30 days as a geometric mean.

A TMDL is expressed as follows:

$$\text{TMDL} = \Sigma\text{WLAs} + \Sigma\text{LAs} + \text{MOS}$$

The TMDL calculates the WLAs and LAs with a margin of safety to meet the stream's water quality standards. The allocations are based on estimates that use the best available data and provide the basis to establish or modify existing controls so that water quality standards can be achieved. In developing a TMDL, it is important to consider whether adequate data are available to identify the sources, and to understand the fate and transport of the pollutant to be controlled.

TMDLs may be developed using a phased approach. Under a phased approach, the TMDL includes: 1) WLAs that confirm existing limits and controls or lead to new limits, and 2) LAs that confirm existing controls or include implementing new controls (USEPA, 1991). A phased TMDL requires additional data be collected to determine if load reductions required by the TMDL are leading to the attainment of water quality standards.

Watershed based plans may be developed to address and assess both point and nonpoint sources. These plans establish a schedule or timetable for the installation and evaluation of source control measures, data collection, and assessment of water quality standard attainment. Future monitoring of the listed segment water quality may be used to evaluate this phase of the TMDL, and if necessary, to reallocate the loads.

The fecal coliform loads calculated for each listed stream segment include the sum of the total loads from all point and nonpoint sources for the segment. The load contributions to the listed segment from unlisted upstream segments are represented in the background loads, unless the unlisted segment contains point sources that had permit violations for fecal coliform. In these cases, the upstream point sources are included in the wasteload allocations for the listed segment. In situations where two or more adjacent segments are listed, the fecal coliform loads to each segment are individually evaluated on a localized watershed basis. Point source loads originating in upstream segments are included in the background loads of the downstream segment. The following sections describe the various fecal coliform TMDL components.

5.1 Waste Load Allocations

5.1.1 Wastewater Treatment Facilities

The waste load allocation is the portion of the receiving water’s loading capacity that is allocated to existing or future point sources. WLAs are provided to the point sources with flows greater than 0.1 MGD from municipal and industrial wastewater treatment systems with NPDES effluent limits for fecal coliform bacteria. There are two of these facilities in the Ogeechee River Basin watershed that discharge into or within 25-miles upstream of listed segments. The maximum allocated fecal coliform loads for these wastewater treatment facilities are given in Table 12. These WLA loads were calculated from the permitted flows and permitted fecal coliform concentrations. These were expressed as an accumulated load over a 30-day period, and presented in units of counts per 30 days. If a facility expands its capacity and the permitted flow increases, the wasteload allocation for the facility would increase in proportion to the flow.

Table 12. WLAs for the Ogeechee River Basin

Facility Name	Permit No.	Receiving Stream	Listed Stream Segment	WLA (counts/30 days)
Statesboro WPCP	GA0023108	Little Lotts Creek	Little Lotts Creek	2.28E+12
Savannah - Georgetown WPCP	GA0046418	Ogeechee River	Ogeechee River	6.97E+10

A third NPDES facility that discharges into one of the listed segments is the Richmond Hill – Elbow Swamp Constructed Wetlands Facility. This facility is a natural system which does not have an effluent fecal coliform limit and therefore is not given a WLA.

5.1.2 Regulated Stormwater Discharges

State and Federal Rules define stormwater discharges covered by NPDES permits as point sources. However, stormwater discharges are from diffuse sources and there are multiple stormwater outfalls. Stormwater sources (point and nonpoint) are different than traditional NPDES permitted sources in four respects: 1) they do not produce a continuous (pollutant loading) discharge; 2) their pollutant loading depends on the intensity, duration, and frequency of rainfall events, over which the permittee has no control; 3) the activities contributing to the pollutant loading may include the various allowable activities of others, and control of these activities is not solely within the discretion of the permittee; and 4) they do not have wastewater treatment plants that control specific pollutants to meet numerical limits.

The intent of stormwater NPDES permits is not to treat the water after collection, but to reduce the exposure of stormwater to pollutants by implementing various controls. It would be infeasible and prohibitively expensive to control pollutant discharges from each stormwater outfall. Therefore, stormwater NPDES permits require the establishment of controls or BMPs to reduce the pollutants entering the environment.

The waste load allocations from stormwater discharges associated with MS4s (WLA_{sw}) are estimated based on the percentage of urban area in each watershed covered by the MS4 stormwater permit. At this time, the portion of each watershed that goes directly to a permitted storm sewer and that which goes through non-permitted point sources, or is sheet flow or agricultural runoff, has not been clearly defined. Thus, it is assumed that approximately 70 percent of stormwater runoff from the regulated urban area is collected by the municipal separate storm sewer systems.

5.1.3 Confined Animal Feeding Operations

Wet and dry manure CAFOs are located within the Ogeechee River Basin (see Section 3.1.3). Wet manure facilities are either included under an LAS General Permit or an NPDES General Permit. A small number of wet manure operations have an individual NPDES permit. Dry manure facilities are not required to obtain permits. Presently no CAFOs discharge wastewater, and therefore, they were not provided a WLA.

5.2 Load Allocations

The load allocation is the portion of the receiving water's loading capacity that is attributed to existing or future nonpoint sources or to natural background sources. Nonpoint sources are identified in 40 CFR 130.6 as follows:

- Residual waste;
- Land disposal;
- Agricultural and silvicultural;
- Mines;
- Construction;
- Saltwater intrusion; and
- Urban stormwater (non-permitted).

The LA is calculated as the remaining portion of the TMDL load available, after allocating the WLA, WLAsw, and the MOS, using the following equation:

$$LA = TMDL - (\sum WLA + \sum WLAsw + MOS)$$

As described above, there are two types of load allocations: loads to the stream independent of precipitation, including sources such as failing septic systems, leachate from landfills, animals in the stream, leaking sewer system collection lines, and background loads; and loads associated with fecal coliform accumulation on land surfaces that is washed off during storm events, including runoff from saturated LAS fields. At this time, it is not possible to partition the various sources of load allocations. Table 13 presents the total load allocation expressed as counts per 30 days for the 303(d) listed streams located in the Ogeechee River Basin for the current critical condition. In the future, after additional data has been collected, it may be possible to partition the load allocation by source.

5.3 Seasonal Variation

The Georgia fecal coliform criteria are seasonal. One set of criteria applies to the summer season, while a different set applies to the winter season. To account for seasonal variations, the critical loads for each listed segment were determined from sampling data obtained during both summer and winter seasons, when possible. The TMDL and percent reduction given in Table 13 for each listed segment was based on the season in which the critical load occurred. The TMDLs for each season, for any given flow, are presented as equations in Section 5.5.

Analyses of the available fecal coliform data and corresponding flows were performed to determine if the fecal coliform violations occurred during wet weather (high flow) or dry weather (low flow) conditions. The flow data from each sampling site were normalized by dividing the measured flow by the product of the average annual runoff (cfs/sq mile), published in Open-File Report 82-577 (Carter, 1982), and the appropriate drainage area. Plots of the normalized flows (Q/Q_o) versus

fecal coliform are shown in Appendix B. The plots do not show a consistent relationship between fecal coliform concentrations and flow. The summer and winter plots show that the fecal coliform violations occur during both high (wet weather) and low (dry weather) flow conditions.

5.4 Margin of Safety

The MOS is a required component of TMDL development. There are two basic methods for incorporating the MOS: 1) implicitly incorporate the MOS using conservative modeling assumptions to develop allocations; or 2) explicitly specify a portion of the TMDL as the MOS and use the remainder for allocations. For this TMDL, an explicit MOS of 10 percent of the TMDL was used. The MOS values are presented in Table 13.

5.5 Total Fecal Coliform Load

The fecal coliform TMDL for the listed stream segment is dependent on the time of year, the stream flow, and the applicable state water quality standard.

The total maximum daily seasonal fecal coliform loads for Georgia are given below:

$$\text{TMDL}_{\text{summer}} = 200 \text{ counts (as a 30-day geometric mean)/100 mL} \times Q$$

$$\text{TMDL}_{\text{winter}} = 1,000 \text{ counts (as a 30-day geometric mean)/100 mL} \times Q$$

$$\text{TMDL}_{\text{winter}} = 4,000 \text{ counts (instantaneous)/100 mL} \times Q$$

For purposes of determining necessary load reductions required to meet the instream water quality criteria, the current critical TMDL was determined. This load is the product of the applicable seasonal fecal coliform standard and the mean flow used to calculate the current critical load. It represents the sum of the allocated loads from point (WLA and WLA_{sw}) and nonpoint (LA) sources located within the immediate drainage area of the listed segment, the NPDES-permitted point discharges with recorded fecal coliform violations from the nearest upstream subwatersheds, and a margin of safety (MOS). For these calculations, the fecal load contributed by the permitted facility to the WLA was not the maximum presented in Table 12, but rather was the product of the fecal coliform permitted limit and the average monthly discharge at the time of the critical load. The current critical loads and corresponding TMDLs, WLAs (WLA and WLA_{sw}), LAs, MOSs, and percent load reductions for the Ogeechee River Basin listed stream segments are presented in Table 13.

The relationships of the current critical loads to the TMDLs are shown graphically in Appendix A. The vertical distance between the two values represents the load reductions necessary to achieve the TMDLs. As a consequence of the localized nature of the load evaluations, the calculated fecal coliform load reductions pertain to point and nonpoint sources occurring within the immediate drainage area of the listed segment. These current critical values represent a worst-case scenario for the limited set of data. Thus, the load reductions required are conservative estimates, and should be sufficient to prevent exceedances of the instream fecal coliform standard for a wide range of conditions.

Evaluation of the relationship between instream water quality and the potential sources of pollutant loading is an important component of TMDL development, and is the basis for later implementation of corrective measures and BMPs. For the current TMDLs, the association

between fecal coliform loads and the potential sources occurring within the subwatersheds of each segment was examined on a qualitative basis.

Table 13. Fecal Coliform Loads and Required Fecal Coliform Load Reductions

Stream Segment	Current Load (counts/ 30 days)	TMDL Components					Percent Reduction
		WLA (counts/ 30 days) ¹	WLA _{sw} (counts/ 30 days)	LA (counts/ 30 days)	MOS (counts/ 30 days)	TMDL (counts/ 30 days)	
Canoochee River	7.00E+13	-	5.07E+11	3.76E+13	4.24E+12	4.24E+13	39
Little Lotts Creek	1.38E+12	2.87E+10	-	3.02E+11	3.64E+10	3.64E+11	74
Lotts Creek	1.82E+13	-	-	8.99E+12	9.99E+11	9.99E+12	45
Ogeechee River	7.29E+14	4.83E+10	2.51E+12	5.09E+14	5.68E+13	5.68E+14	22
Salt Creek	4.15E+11	-	6.66E+10	2.59E+11	3.62E+10	3.62E+11	13
Sterling Creek	4.74E+12	-	2.49E+10	3.58E+11	4.25E+10	4.25E+11	91
Taylors Creek	1.39E+13	-	9.05E+10	1.47E+12	1.73E+11	1.73E+12	88
Wateringhole Branch	8.62E+11	-	-	1.98E+11	2.20E+10	2.20E+11	74

Notes: ¹ The assigned fecal coliform load from each NPDES permitted facility for WLA was determined as the product of the fecal coliform permit limit and the facility average monthly discharge at the time of the critical load.

6.0 RECOMMENDATIONS

The TMDL process consists of an evaluation of the subwatersheds for each 303(d) listed stream segment to identify, as best as possible, the sources of the fecal coliform loads causing the stream to exceed instream standards. The TMDL analysis was performed using the best available data to specify WLAs and LAs that will meet fecal coliform water quality criteria so as to support the use classification specified for each listed segment.

This TMDL represents part of a long-term process to reduce fecal coliform loading to meet water quality standards in the Ogeechee River Basin. Implementation strategies will be reviewed and the TMDLs will be refined as necessary in the next phase (next five-year cycle). The phased approach will support progress toward water quality standards attainment in the future. In accordance with USEPA TMDL guidance, these TMDLs may be revised based on the results of future monitoring and source characterization data efforts. The following recommendations emphasize further source identification and involve the collection of data to support the current allocations and subsequent source reductions.

6.1 Monitoring

Water quality monitoring is conducted at a number of locations across the State each year. Sampling is conducted statewide by EPD personnel in Atlanta, Brunswick, Cartersville, and Tifton. Additional monitoring sites are added as necessary.

In the case where a watershed based plan has been developed for a listed stream segment, an appropriate water quality monitoring program will be outlined. The monitoring program will be developed to help identify the various fecal coliform sources. The monitoring program may be used to verify the 303(d) stream segment listings. This will be especially valuable for those segments where limited data resulted in the listing.

6.2 Fecal Coliform Management Practices

Based on the findings of the source assessment, NPDES point source fecal coliform loads from wastewater treatment facilities usually do not significantly contribute to the impairment of the listed stream segments. This is because most facilities are required to treat to levels corresponding to instream water quality criteria. Sources of fecal coliform in urban areas include wastes that are attributable to domestic animals, leaks and overflows from sanitary sewer systems, illicit discharges of sanitary waste, leaking septic systems, runoff from improper disposal of waste materials, and leachate from both operational and closed landfills. In agricultural areas, potential sources of fecal coliform may include CAFOs, animals grazing in pastures, dry manure storage facilities and lagoons, chicken litter storage areas, and direct access of livestock to streams. Wildlife, especially waterfowl can be a significant source of fecal coliform bacteria.

Management practices are recommended to reduce fecal coliform source loads to the listed 303(d) stream segments, with the result of achieving the instream fecal coliform standard criteria. These recommended management practices include:

- Compliance with NPDES permit limits and requirements;
- Adoption of NRCS Conservation Practices; and
- Application of Best Management Practices (BMPs) appropriate to agricultural or urban land uses, where applicable.

6.2.1 Point Source Approaches

Point sources are defined as discharges of treated wastewater or stormwater into rivers and streams at discrete locations. The NPDES permit program provides a basis for municipal, industrial, and stormwater permits, monitoring and compliance with limitations, and appropriate enforcement actions for violations.

In accordance with EPD rules and regulations, all discharges from point source facilities are required to be in compliance with the conditions of their NPDES permit at all times. Municipal and industrial wastewater treatment facilities with the potential for fecal coliform in their discharge are given end-of-pipe limits to meet the applicable water quality standard. An exception is constructed wetland systems, which have a natural level of fecal coliform input from animals attracted to the artificial wetlands. In addition, the permits include routine monitoring and reporting requirements.

6.2.2 Nonpoint Source Approaches

EPD is responsible for administering and enforcing laws to protect the waters of the State. EPD is the lead agency for implementing the State's Nonpoint Source Management Program. Regulatory responsibilities that have a bearing on nonpoint source pollution include establishing water quality standards and use classifications, assessing and reporting water quality conditions, and regulating land use activities that may affect water quality. Georgia is working with local governments, agricultural and forestry agencies such as the Natural Resources Conservation Service, the Georgia Soil and Water Conservation Commission, and the Georgia Forestry Commission, to foster the implementation of BMPs to address nonpoint source pollution. In addition, public education efforts are being targeted to individual stakeholders to provide information regarding the use of BMPs to protect water quality. The following sections describe, in more detail, recommendations to reduce nonpoint source loads of fecal coliform bacteria in Georgia's surface waters.

6.2.2.1 Agricultural Sources

EPD should coordinate with other agencies that are responsible for agricultural activities in the state to address issues concerning fecal coliform loading from agricultural lands. It is recommended that such as livestock populations by subwatershed, animal access to streams, manure storage and application practices be periodically reviewed so that watershed evaluations can be updated to reflect current conditions. It is also recommended that BMPs be utilized to reduce the amount of fecal coliform bacteria transported to surface waters from agricultural sources to the maximum extent practicable.

The following three organizations have primary responsibility for working with farmers to promote soil and water conservation, and to protect water quality:

- University of Georgia (UGA) - Cooperative Extension Service;
- Georgia Soil and Water Conservation Commission (GSWCC); and
- Natural Resources Conservation Service (NRCS).

UGA has faculty, County Cooperative Extension Agents, and technical specialists who provide services in several key areas relating to agricultural impacts on water quality.

EPD designated the GSWCC as the lead agency for agricultural Nonpoint Source Management in the State. The GSWCC develops nonpoint source management programs and conducts

educational activities to promote conservation and protection of land and water devoted to agricultural uses.

The NRCS works with federal, state, and local governments to provide financial and technical assistance to farmers. The NRCS develops standards and specifications for BMPs that are to be used to improve, protect, and/or maintain our state's natural resources. In addition, every five years, the NRCS conducts the National Resources Inventory (NRI). The NRI is a statistically based sample of land use and natural resource conditions and trends that covers non-federal land in the United States.

The NRCS is also providing technical assistance to the GSWCC and the EPD with the Georgia River Basin Planning Program. Planning activities associated with this program will describe conditions of the agricultural natural resource base once every five years. It is recommended that the GSWCC and the NRCS continue to encourage BMP implementation, education efforts, and river basin surveys with regard to river basin planning.

6.2.2.2 Urban Sources

Both point and nonpoint sources of fecal coliform bacteria can be significant in the Ogeechee River Basin urban areas. Urban sources of fecal coliform can best be addressed using a strategy that involves public participation and intergovernmental coordination to reduce the discharge of pollutants to the maximum extent practicable. Management practices, control techniques, public education, and other appropriate methods and provisions may be employed. In addition to water quality monitoring programs, discussed in Section 6.1, the following activities and programs conducted by cities, counties, and state agencies are recommended:

- Uphold requirements that all new and replacement sanitary sewage systems be designed to minimize discharges into storm sewer systems;
- Further develop and streamline mechanisms for reporting and correcting illicit connections, breaks, surcharges, and general sanitary sewer system problems;
- Maintain compliance with stormwater NPDES permit requirements; and
- Continue efforts to increase public awareness and education towards the impact of human activities in urban settings on water quality, ranging from the consequences of industrial and municipal discharges to the activities of individuals in residential neighborhoods.

6.3 Reasonable Assurance

Permitted discharges will be regulated through the NPDES permitting process described in this report. An allocation to a point source discharger does not automatically result in a permit limit or a monitoring requirement. Through its NPDES permitting process, EPD will determine whether a new or existing discharger has a reasonable potential of discharging fecal coliform levels equal to or greater than the total allocated load. The results of this reasonable potential analysis will determine the specific type of requirements in an individual facility's NPDES permit. As part of its analysis, EPD will use its USEPA approved 2003 NPDES Reasonable Potential Procedures to determine whether monitoring requirements or effluent limitations are necessary.

Georgia is working with local governments, agricultural and forestry agencies, such as the Natural Resources Conservation Service, the Georgia Soil and Water Conservation Commission, and the Georgia Forestry Commission, to foster the implementation of best management practices to address nonpoint sources. In addition, public education efforts will be targeted to individual stakeholders to provide information regarding the use of best management practices to protect water quality.

6.4 Public Participation

A thirty-day public notice was provided for this TMDL. During this time, the TMDL was available of the GA EPD website, a copy of the TMDL was provided on request, and the public was invited to provide comments on the TMDL.

7.0 INITIAL TMDL IMPLEMENTATION PLAN

This plan identifies applicable State-wide programs and activities that may be employed to manage point and nonpoint sources of bacteria loads for eight segments in the Ogeechee River Basin. Local watershed planning and management initiatives will be fostered, supported, or developed through a variety of mechanisms. Implementation may be addressed by Watershed-Based Plans or other assessments funded by Section 319 (h) grants, the local development of watershed protection plans, or “Targeted Outreach” initiated by EPD. These initiatives will supplement or possibly replace this initial implementation plan.

7.1 Impaired Segments

This initial plan is applicable to the following waterbodies that were added to Georgia’s 303(d) list available on the EPD website (www.gaepd.org):

Water Bodies Listed on the 2014 303(d) List for Fecal Coliform Bacteria in the Ogeechee River Basin

Stream Segment	Location	Reach ID	Segment Length (miles)	Designated Use
Canoochee River	Savage Creek to Ogeechee River	R030602030603	18	Fishing
Little Lotts Creek	Unnamed tributary @ Burkhalter Road to Lotts Creek	R030602030313	8	Fishing
Lotts Creek	U.S. Hwy. 301 to Little Lotts Creek near Register	R030602030310	8	Fishing
Ogeechee River	Black Creek to Richmond Hill	R030602040305	21	Fishing
Salt Creek	Headwaters to Hardin Canal	R030602040212	1	Fishing
Sterling Creek	Headwaters to the Ogeechee River	R030602040307	9	Fishing
Taylor's Creek	Upstream WPCP Drainage Canal, Fort Stewart	R030602030505	3	Fishing
Wateringhole Branch	Granna Branch to Dry Branch	R030602030311	5	Fishing

Fecal coliform bacteria are used as an indicator of the potential presence of pathogens in a stream. The current water quality standard [*State of Georgia’s Rules and Regulations for Water Quality Control*, Chapter 391-3-6-.03(6)(c)(iii) (GA EPD, 2011)] states that four or more water samples collected within a 30-day period that have a geometric mean for fecal coliform either in excess of 200 Colony Forming Units (CFU) per 100 milliliters from May through October, or in excess of 1000 (CFU) per 100 milliliters from November through April are in violation of the bacteria water quality standard. In addition, a single sample in excess of 4000 (CFU) per 100 milliliters from November through April can also provide a basis for adding a stream segment to the 303(d) listing.

7.2 Potential Sources

An important part of the TMDL analysis is the identification of potential source categories. A source assessment characterizes the known and suspected bacteria sources in the watershed.

Sources are broadly classified as either point or nonpoint sources. A point source is defined as a discernable, confined, and discrete conveyance from which pollutants are or may be discharged to surface waters. Point sources of bacteria include NPDES permittees discharging

treated wastewater and stormwater. Nonpoint sources of bacteria are diffuse sources that cannot be identified as entering the water body at a single location. These sources generally involve land use activities that contribute bacteria to streams during a rainfall runoff event.

NPDES point source fecal coliform loads from wastewater treatment facilities usually do not contribute to impairments. This is because these facilities are required to treat to levels corresponding to instream water quality criteria. However, point sources can and do fail, which may contribute to bacteria loads through leaks and overflows from sanitary sewer systems, CAFOs, or leachate from operational landfills.

Nonpoint sources of fecal coliform in urban areas include wastes that are attributable to domestic animals, illicit discharges of sanitary waste, leaking septic systems, runoff from improper disposal of waste materials, and leachate from closed landfills. In non-urban areas, potential sources of fecal coliform may include animals grazing in pastures, dry manure storage facilities and lagoons, chicken litter storage areas, and direct access of livestock to streams. Wildlife, especially waterfowl, can be a significant source of fecal coliform bacteria.

7.3 Management Practices and Activities

EPD is responsible for administering and enforcing laws to protect the waters of the State and is the lead agency for implementing the State's Nonpoint Source Management Program. Georgia is working with local governments, agricultural and forestry agencies such as the Georgia Department of Agriculture, the Natural Resource Conservation Service (NRCS), the Georgia Soil and Water Conservation Commission (GSWCC), and the Georgia Forestry Commission (GFC) to foster implementation of BMPs that address nonpoint source pollution. The following management practices are recommended to reduce fecal coliform loads to stream segments:

- Sustained compliance with NPDES permit limits and requirements where applicable;
- Adoption of NRCS Conservation Practices for primarily agricultural lands;
- Application of BMPs appropriate to specific non-urban and urban land uses;
- Further development and streamlining of local jurisdictional mechanisms for identifying, reporting, and correcting illicit connections, breaks, and other sanitary sewer system problems;
- Adoption of local ordinances (i.e. septic tanks, stormwater, etc.) that address local water quality; and
- Ongoing public education efforts on the sources of fecal coliform and common sense approaches to lessen the impact of this contaminant on surface waters.

Public education efforts target individual stakeholders to provide information regarding the use of BMPs to protect water quality. EPD will continue efforts to increase awareness and educate the public about the impact of human activities on water quality.

7.4 Monitoring

EPD encourages local governments and municipalities to develop water quality monitoring programs. These programs can help pinpoint various fecal coliform sources, as well as verify the 303(d) stream segment listings. This will be particularly valuable for those segments where listing was based on limited data. In addition, regularly scheduled sampling will determine if there has been some improvement in the water quality of the listed stream segments. EPD is available to assist in providing technical guidance regarding the preparation of monitoring plans and Sampling Quality Assurance Plans (SQAP).

7.5 Future Action

This Initial TMDL Implementation Plan includes a general approach to pollutant source identification as well as management practices to address pollutants. In the future, EPD will continue to determine and assess the appropriate point and non-point source management measures needed to achieve the TMDLs and also to protect and restore water quality in impaired waterbodies.

For point sources, any wasteload allocations for wastewater treatment plant facilities will be implemented in the form of water-quality based effluent limitations in NPDES permits. Any wasteload allocations for regulated stormwater will be implemented in the form of best management practices in the NPDES permits. Contributions of bacteria from regulated communities may also be managed using permit requirements such as watershed assessments, watershed protection plans, and long term monitoring. These measures will be directed through current point source management programs.

EPD will work to support watershed restoration, improvement and protection projects that address nonpoint source pollution. This is a process whereby EPD and/or Regional Commissions or other agencies or local governments, under a contract with EPD, will develop a watershed management plan intended to address water quality at the small watershed level (HUC 10 or smaller). These plans will be developed as resources and willing partners become available. The development of these plans may be funded via several grant sources, including but not limited to, Clean Water Act Section 319(h), Section 604(b), and/or Section 106 grant funds. These plans are intended for implementation upon completion.

Any watershed management plan that specifically addresses a waterbody contained within this TMDL will supersede this Initial TMDL Implementation Plan for that waterbody, once EPD accepts and/or approves the plan. Watershed management plans intended to address this TMDL and other water quality concerns, prepared for EPD, and for which EPD and/or the EPD Contractor are responsible, will contain at a minimum the US EPA's 9 Elements of Watershed Planning:

- 1) An identification of the sources or groups of similar sources contributing to nonpoint source pollution to be controlled to implement load allocations or achieve water quality standards. Sources should be identified at the subcategory level with estimates of the extent to which they are present in the watershed (e.g., X numbers of cattle feedlots needing upgrading, Y acres of row crops needing improved bacteria control, or Z linear miles of eroded streambank needing remediation);
- 2) An estimate of the load reductions expected for the management measures;
- 3) A description of the NPS management measures that will need to be implemented to achieve the load reductions established in the TMDL or to achieve water quality standards;
- 4) An estimate of the sources of funding needed, and/or authorities that will be relied upon, to implement the plan;
- 5) An information/education component that will be used to enhance public understanding of and participation in implementing the plan;
- 6) A schedule for implementing the management measures that is reasonably expeditious;

- 7) A description of interim, measurable milestones (e.g., amount of load reductions, improvement in biological or habitat parameters) for determining whether management measures or other control actions are being implemented;
- 8) A set of criteria that can be used to determine whether substantial progress is being made towards attaining water quality standards and, if not, the criteria for determining whether the plan needs to be revised; and;
- 9) A monitoring component to evaluate the effectiveness of the implementation efforts, measured against the criteria established under item (8).

The public will be provided an opportunity to participate in the development of watershed management plans that are prepared for EPD, and for which EPD and/or the EPD Contractor are responsible, and will be able to comment on them before they are finalized.

EPD will offer technical and financial assistance, when and where available, in the preparation of watershed management plans that address the impaired waterbodies listed in this TMDL document. Assistance may include but will not be limited to:

- Assessments of pollutant sources within watersheds;
- Determinations of appropriate management practices to address impairments;
- Identification of potential stakeholders and other partners;
- Developing a plan for outreach to the general public and other groups;
- Assessing the resources needed to implement the plan upon completion; and
- Other needs determined by the lead organization responsible for plan development.

EPD will also make this same assistance available, if needed, to proactively address water quality concerns. This assistance may be in the way of financial, technical, or other aid and may be requested and provided outside of the TMDL process or schedule.

REFERENCES

- Carter, R.F., 1982. Storage Requirements for Georgia Streams, USGS, Water Resources Investigations, Open File Report 82-557.
- Federal Register, 1990. Federal Register, Part II: Environmental Protection Agency, Vol. 55, No. 222, November 16, 1990.
- GA Dept. of Agriculture, 2014. Personal Communications with State of Georgia, Department of Agriculture, Livestock and Poultry Field Forces. October 2014.
- GA Dept. of Public Health, 2014. Personal Communications with State of Georgia, Department of Public Health, Environmental Health Section. August 2014.
- GA EPD, 2012 – 2013. Water Quality in Georgia, 2012 – 2013, Georgia Department of Natural Resources, Environmental Protection Division.
- GA EPD, 2001. *Ogeechee River Basin Management Plan 2001*, State of Georgia, Department of Natural Resources, Environmental Protection Division, Water Protection Branch.
- GA EPD, 2000. Combined Databases Of Landfills In Georgia; Historic And Current Through 1999, State of Georgia, Department of Natural Resources, Environmental Protection Division, Land Protection Branch.
- GA EPD, 2014. Personal Communications with State of Georgia, Department of Natural Resources, Environmental Protection Division, Land Protection Branch. April 2014.
- GA EPD, 2013. State of Georgia Rules and Regulations for Water Quality Control, Chapter 391-3-6, Revised October 2013, State of Georgia, Department of Natural Resources, Environmental Protection Division, Water Protection Branch.
- GA WRD, 2007. Personal Communications with Region IV Office, Wildlife Resources Division, Georgia Department of Natural Resources, Thomson, GA, May 2007.
- UGA, 2014. Personal Communications with Center for Agribusiness and Economic Development, College of Agriculture and Environmental Sciences, University of Georgia, 304A Lumpkin House, Athens, Georgia 30605, August - October 2014.
- USEPA, 1991. Guidance for Water Quality Based Decisions: The TMDL Process, EPA 440/4-91-001, U.S. Environmental Protection Agency, Assessment and Watershed Protection Division, Washington, D.C.

Appendix A

30-day Geometric Mean Fecal Coliform Monitoring Data

Water Quality Monitoring Stations

Stream Segment	Location	EPD Monitoring Station No.	Monitoring Station Description
Canoochee River	Savage Creek to Ogeechee River	0203060601	Canoochee River at Georgia Highway 67
Little Lotts Creek	Unnamed tributary @ Burkhalter Road to Lotts Creek	203040701	Little Lotts Creek at State Route 46 near Statesboro, GA
Lotts Creek	U.S. Hwy. 301 to Little Lotts Creek near Register	203040601	Lotts Creek at State Road 250 (Nevils-Daisy Rd) near Nevils, Ga.
Ogeechee River	Black Creek to Richmond Hill	0202060501	Ogeechee River at Morgans Bridge Road near Bloomingdale, GA
		0202060601	Ogeechee River at US Highway 17
Salt Creek	Headwaters to Hardin Canal	204010102	Salt Creek at US Highway 17 at Savannah, GA
Sterling Creek	Headwaters to the Ogeechee River	202060603	Sterling Creek at Harris Trail Road near Richmond Hill, GA
Taylor's Creek	Upstream WPCP Drainage Canal, Fort Stewart	203050601	Taylor's Creek at State Route 119/144 near Hinesville, GA
Wateringhole Branch	Granna Branch to Dry Branch	203040501	Wateringhole Branch at Country Club Road

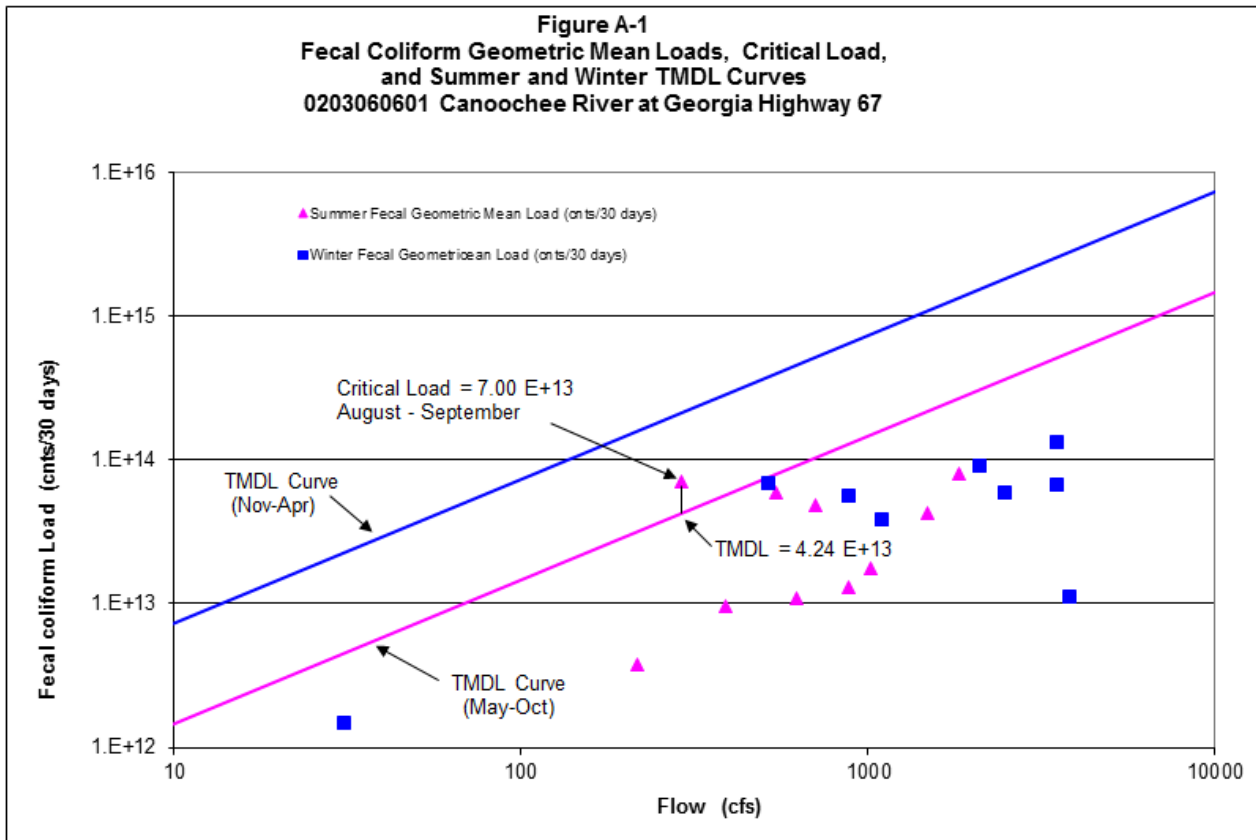


Table A-1. Data for Figure A-1

Date	Observed Fecal Coliform (counts/100 ml)	Estimated Instantaneous Flow On Sample Day (cfs)	Geometric Mean (counts/100 ml)	Mean Flow (cfs)	Geometric Mean Fecal Coliform Loading (counts/30 days)	Geometric Mean TMDL Fecal Coliform Loading (counts/30 days)
1/10/2001	20	3169.8				
2/5/2001	80	4118.2				
2/7/2001	20	3793.7				
2/13/2001	50	3194.7				
2/19/2001	20	2570.8				
3/5/2001	220	3768.8	51.2	3489.2	1.31E+14	2.56E+15
4/2/2001	110	11680.7				
5/9/2001	20	1589.9				
5/29/2001	20	781.2				
6/5/2001	20	863.6				
6/12/2001	20	1255.4				
6/26/2001	310	3020.0	39.7	1480.1	4.31E+13	2.17E+14
7/12/2001	20	2046.6				
7/23/2001	20	791.2				
8/6/2001	40	616.5				
8/9/2001	20	606.5	23.8	1015.2	1.77E+13	1.49E+14
8/15/2001	20	484.2	23.8	624.6	1.09E+13	9.17E+13
10/2/2001	40	481.7				
10/11/2001	70	379.4				
10/15/2001	20	351.9				
10/23/2001	20	369.4				
10/29/2001	40	349.4	33.9	386.4	9.61E+12	5.67E+13

Table A-1. Data for Figure A-1

1/14/2002	80	1115.7				
1/23/2002	20	1250.4				
1/29/2002	20	1190.5	48.3	1095.7	3.88E+13	8.04E+14
4/1/2002	20	2168.9				
4/30/2002	20	1347.8				
5/7/2002	20	758.7				
5/15/2002	20	793.7				
5/22/2002	20	616.5	20.0	879.2	1.29E+13	1.29E+14
7/30/2002	20	222.1				
8/8/2002	20	232.1				
8/21/2002	20	197.2				
8/26/2002	40	214.6	23.8	216.5	3.78E+12	3.18E+13
11/4/2002	20	998.4				
11/7/2002	40	1163.1				
11/19/2002	110	2695.5				
12/2/2002	20	3519.2	36.4	2094.0	5.60E+13	1.54E+15
1/27/2003	50	2670.6				
2/5/2003	20	2670.6				
2/12/2003	20	3893.6				
2/20/2003	80	4792.1	35.6	3506.7	9.15E+13	2.57E+15
3/20/2007	20	6838.7				
3/26/2007	40	3918.5				
4/2/2007	20	2745.5				
4/9/2007	20	1717.2	23.8	3805.0	6.64E+13	2.79E+15
6/11/2007	300	2845.3				
6/18/2007	110	2895.2				
7/9/2007	20	758.7				
7/11/2007	20	833.6	60.3	1833.2	8.11E+13	2.69E+14
9/12/2007	130	691.4				
9/18/2007	170	701.3				
9/25/2007	50	866.1				
10/9/2007	70	556.6	93.8	703.8	4.84E+13	1.03E+14
11/26/2007	20	349.4				
12/5/2007	40	486.7				
12/11/2007	20	519.1				
12/18/2007	50	696.4	29.9	512.9	1.13E+13	3.76E+14
3/3/2010	20	1843.5				
3/11/2010	40	1551.9				
3/17/2010	130	4061.9				
3/23/2010	20	2426.7	38.0	2471.0	6.89E+13	1.81E+15
5/3/2010	230	310.4				
5/10/2010	1000	1156.1				
5/26/2010	20	312.5				
6/1/2010	110	395.8	150.0	543.7	5.99E+13	7.98E+13
8/17/2010	500	104.2				
8/24/2010	300	502.0				
8/31/2010	720	414.5				
9/7/2010	110	134.4	330.1	288.8	7.00E+13	4.24E+13
11/16/2010	40	27.1				
11/22/2010	20	27.1				
11/30/2010	300	31.2				
12/14/2010	75	37.5	65.1	30.7	1.47E+12	2.26E+13

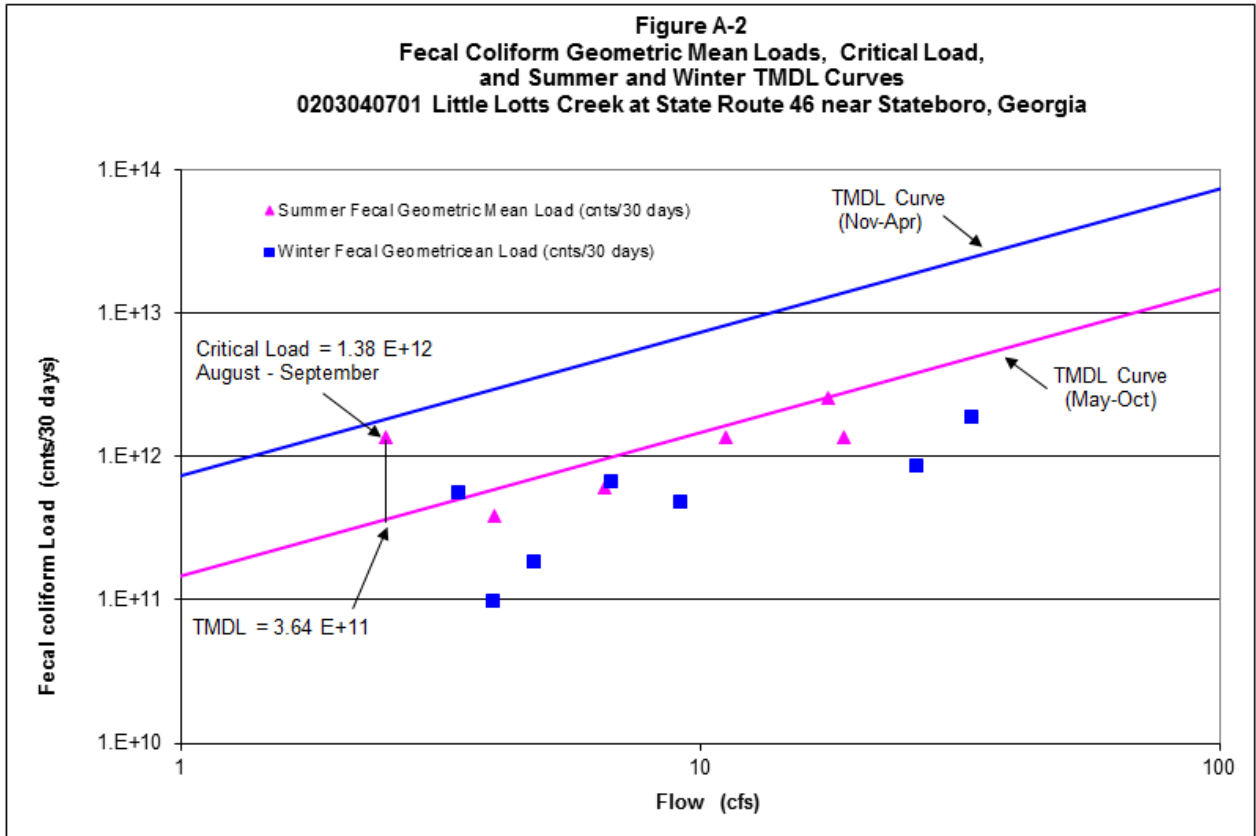
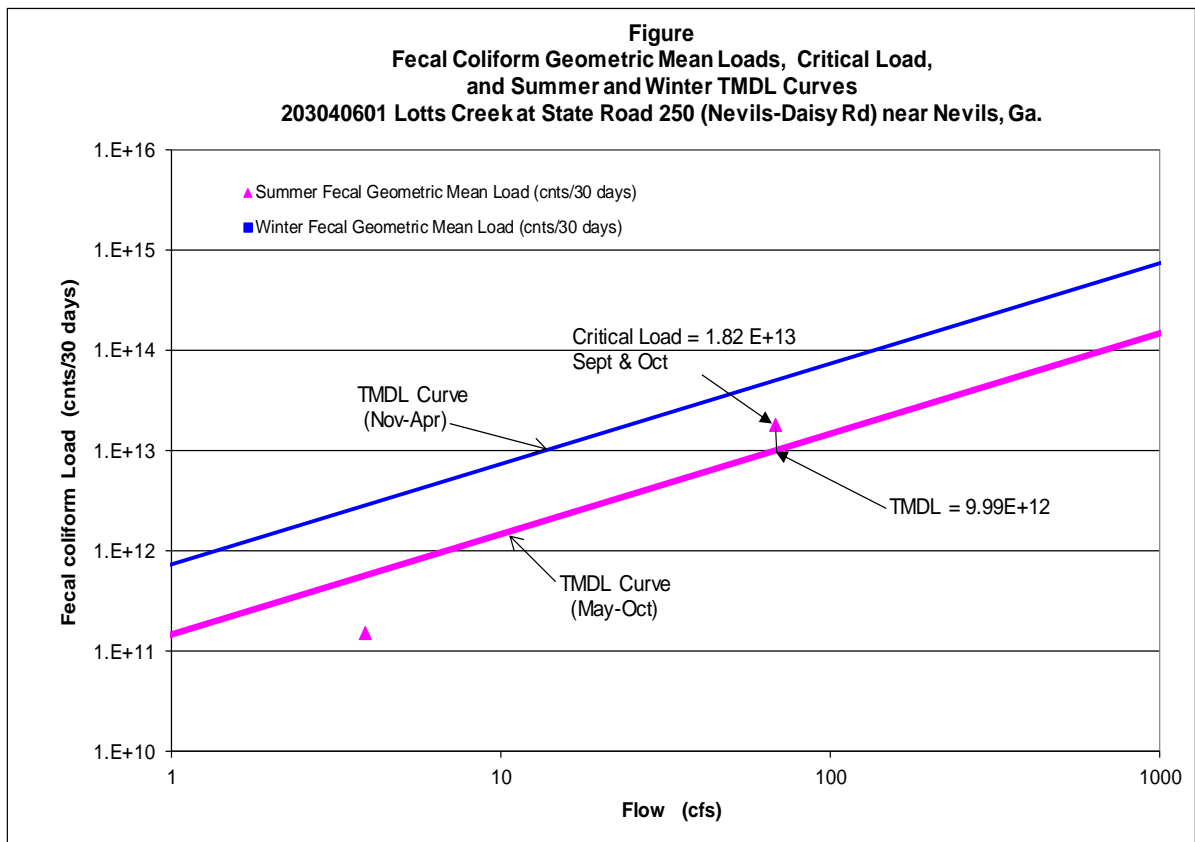


Table A-2. Data for Figure A-2

Date	Observed Fecal Coliform (counts/100 ml)	Estimated Instantaneous Flow On Sample Day (cfs)	Geometric Mean (counts/100 ml)	Mean Flow (cfs)	Geometric Mean Fecal Coliform Loading (counts/30 days)	Geometric Mean TMDL Fecal Coliform Loading (counts/30 days)
1/18/2005	155	6.9				
1/24/2005	20	5.4				
1/31/2005	210	11.7				
2/14/2005	40	12.6	71.4	9.2	4.80E+11	6.72E+12
4/4/2005	130	51.4				
4/11/2005	80	31.6				
4/18/2005	20	11.7				
4/26/2005	20	9.9	45.2	26.2	8.67E+11	1.92E+13
7/18/2005	170	23.5				
7/25/2005	130	5.8				
8/1/2005	300	18.0				
8/9/2005	230	23.5	197.6	17.7	2.56E+12	2.60E+12
9/27/2005	70	3.6				
10/12/2005	300	12.6				
10/19/2005	300	5.4				
10/26/2005	40	4.5	126.0	6.5	6.05E+11	9.60E+11
3/3/2010	210	40.6				
3/11/2010	110	37.9				
3/17/2010	80	32.5				
3/23/2010	20	22.6	78.0	33.4	1.91E+12	2.45E+13
5/3/2010	80	3.9				
5/10/2010	130	3.2				
5/26/2010	90	3.9				
6/1/2010	300	5.1	129.4	4.0	3.81E+11	5.89E+11
8/17/2010	950	2.7				
8/24/2010	3000	3.1				
8/31/2010	500	2.1				
9/7/2010	230	2.1	756.6	2.5	1.38E+12	3.64E+11
11/16/2010	170	2.7				
11/22/2010	500	2.7				
11/30/2010	130	3.8				
12/14/2010	230	4.5	224.5	3.4	5.65E+11	2.52E+12
2/15/2011	800	7.9				
3/9/2011	80	6.8				
3/15/2011	130	6.7				
3/17/2011	40	5.6	135.1	6.7	6.69E+11	4.95E+12
6/7/2011	20	2.1				
6/14/2011	170	1.8				
11/16/2011	80	4.6				
11/21/2011	20	3.8				
11/30/2011	40	4.1				
12/14/2011	20	3.4	33.6	4.0	9.86E+10	2.93E+12
2/15/2012	20	3.3				
2/20/2012	110	5.7				
3/12/2012	85	3.5				
3/14/2012	40	6.7	52.3	4.8	1.84E+11	3.53E+12
5/15/2012	40	3.1				
5/18/2012	230	8.7				
5/30/2012	500	51.4				
6/13/2012	110	12.6	150.0	18.9	2.09E+12	2.78E+12
8/21/2012	90	26.2				
9/6/2012	1400	4.4				
9/11/2012	130	3.2	254.0	11.2	2.10E+12	1.65E+12
11/28/2012	70	3.5				
12/3/2012	40	3.2				



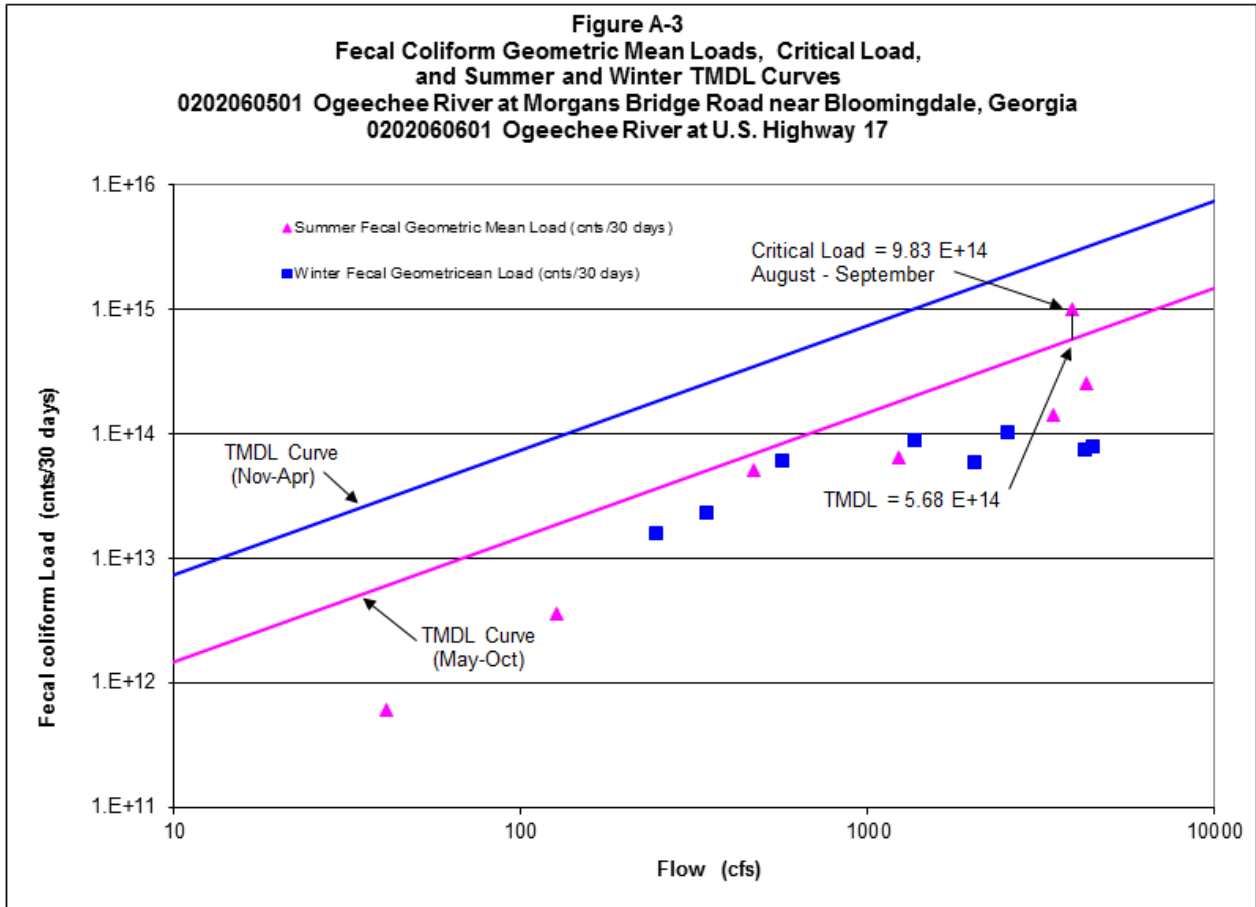


Table A-3. Data for Figure A-3

Date	Observed Fecal Coliform (counts/100 ml)	Estimated Instantaneous Flow On Sample Day (cfs)	Geometric Mean (counts/100 ml)	Mean Flow (cfs)	Geometric Mean Fecal Coliform Loading (counts/30 days)	Geometric Mean TMDL Fecal Coliform Loading (counts/30 days)
2/16/2005	20	3681.1				
2/23/2005	40	3497.8				
3/2/2005	20	4413.9				
3/9/2005	20	5346.7	23.8	4234.9	7.39E+13	3.11E+15
3/22/2005	20	4447.3	23.8	4426.4	7.73E+13	3.25E+15
5/23/2005	500	1425.8				
5/31/2005	110	1004.4				
6/6/2005	20	8328.2				
6/13/2005	40	5946.3				
6/21/2005	80	4563.9	81.2	4253.7	2.53E+14	6.24E+14
8/15/2005	20	4147.4				
8/22/2005	80	5663.2				
8/29/2005	20	3014.8				
9/12/2005	300	937.8	55.7	3440.8	1.41E+14	5.05E+14
11/15/2005	40	776.2				
11/21/2005	300	1041.0				
11/30/2005	130	1569.0				
12/14/2005	40	2048.7	88.9	1358.7	8.86E+13	9.97E+14
3/20/2007	170	4563.9				
3/26/2007	20	2615.1				
4/2/2007	130	1832.2				
4/9/2007	20	1146.0	54.5	2539.3	1.02E+14	1.86E+15
6/11/2007	170	1898.8				
6/18/2007	110	1932.1				
7/9/2007	20	506.4				
7/11/2007	70	556.3	71.5	1223.4	6.42E+13	1.80E+14
9/12/2007	130	461.4				
9/18/2007	170	468.0				
9/25/2007	230	578.0				
10/9/2007	90	371.4	146.2	469.7	5.04E+13	6.90E+13
11/26/2007	230	233.2				
12/5/2007	80	324.8				
12/11/2007	80	346.5				
12/18/2007	50	464.7	92.6	342.3	2.33E+13	2.51E+14
2/15/2011	40	3750.3				
3/9/2011	20	1366.8				
3/15/2011	70	1513.7				
3/17/2011	40	1513.7	38.7	2036.1	5.78E+13	1.49E+15
6/7/2011	40	189.8				
6/14/2011	20	120.9				
6/22/2011	20	101.7				
6/28/2011	130	96.0	38.0	127.1	3.54E+12	1.87E+13
8/29/2011	20	70.0				
9/12/2011	20	36.1				
9/14/2011	20	32.8				
9/19/2011	20	24.9	20.0	40.9	6.01E+11	6.01E+12
11/16/2011	20	159.3				
11/21/2011	20	164.9				
11/30/2011	80	306.1				
12/14/2011	1750	349.0	86.5	244.8	1.55E+13	1.80E+14
2/11/2013	150	883.4				
2/18/2013	80	4710.5				
5/14/2013	40	3072.5				
5/23/2013	500	3275.9				
8/14/2013	20	2428.6				
8/21/2013	1300	5761.0				
9/4/2013	1100	4913.8				
9/11/2013	500	2383.5	345.8	3871.7	9.83E+14	5.68E+14
11/13/2013	170	530.9				
11/20/2013	40	413.4				
11/25/2013	20	433.8				
12/4/2013	130	891.3	146.1	567.3	6.08E+13	4.16E+14

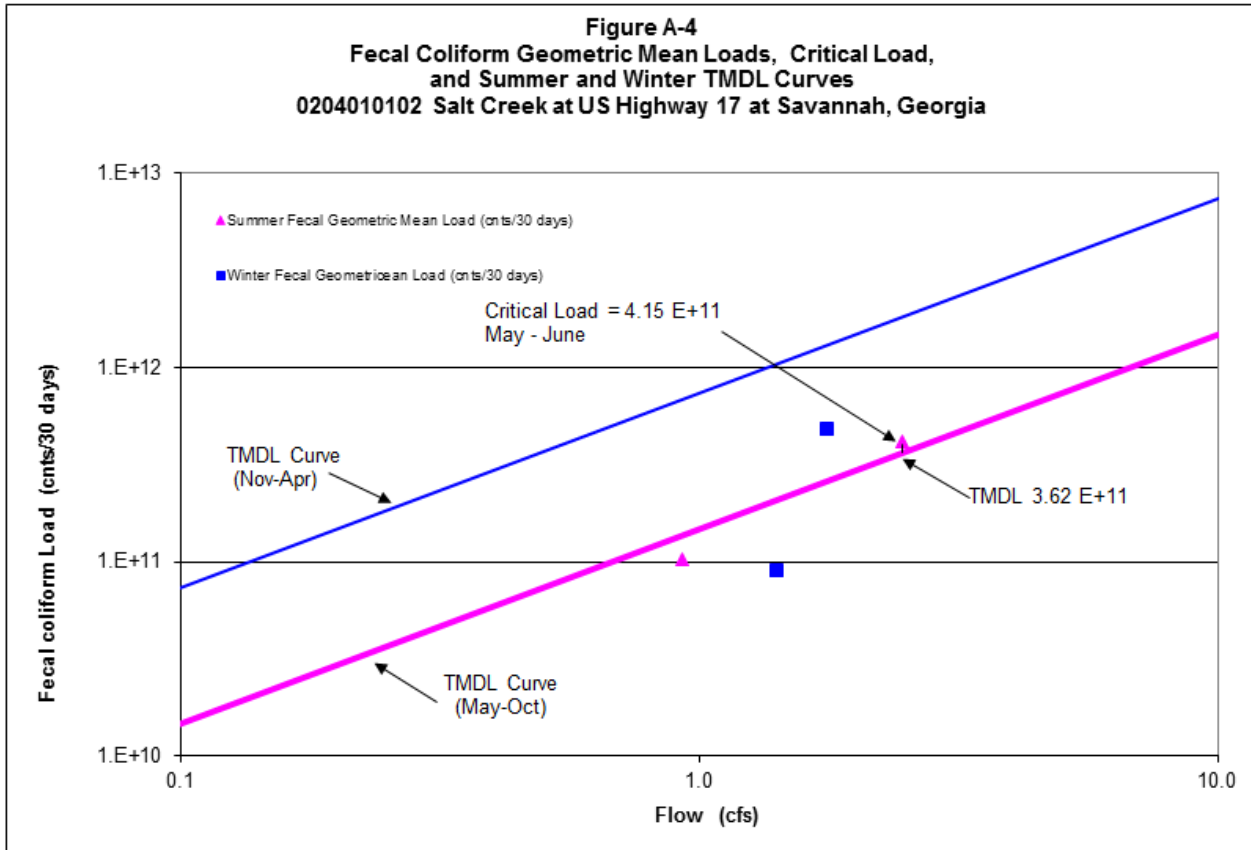


Table A-4. Data for Figure A-4

Date	Observed Fecal Coliform (counts/100 ml)	Estimated Instantaneous Flow On Sample Day (cfs)	Geometric Mean (counts/100 ml)	Mean Flow (cfs)	Geometric Mean Fecal Coliform Loading (counts/30 days)	Geometric Mean TMDL Fecal Coliform Loading (counts/30 days)
3/20/2007	80	1.1				
3/26/2007	220	1.11				
4/2/2007	80	2.04				
4/9/2007	40	1.388	86.6	1.4	8.97E+10	1.04E+12
6/11/2007	230	0.777				
6/18/2007	110	1.480				
7/9/2007	500	0.870				
7/11/2007	40	0.592	150.0	0.93	1.02E+11	1.36E+11
9/12/2007	110	0.5				
9/18/2007	230	3.1				
9/25/2007	330	4.6				
10/9/2007	330	1.7	229.1	2.5	4.15E+11	3.62E+11
11/26/2007	330	0.50				
12/5/2007	1300	1.57				
12/11/2007	330	1.20				
12/18/2007	130	3.79	368.3	1.8	4.78E+11	1.30E+12

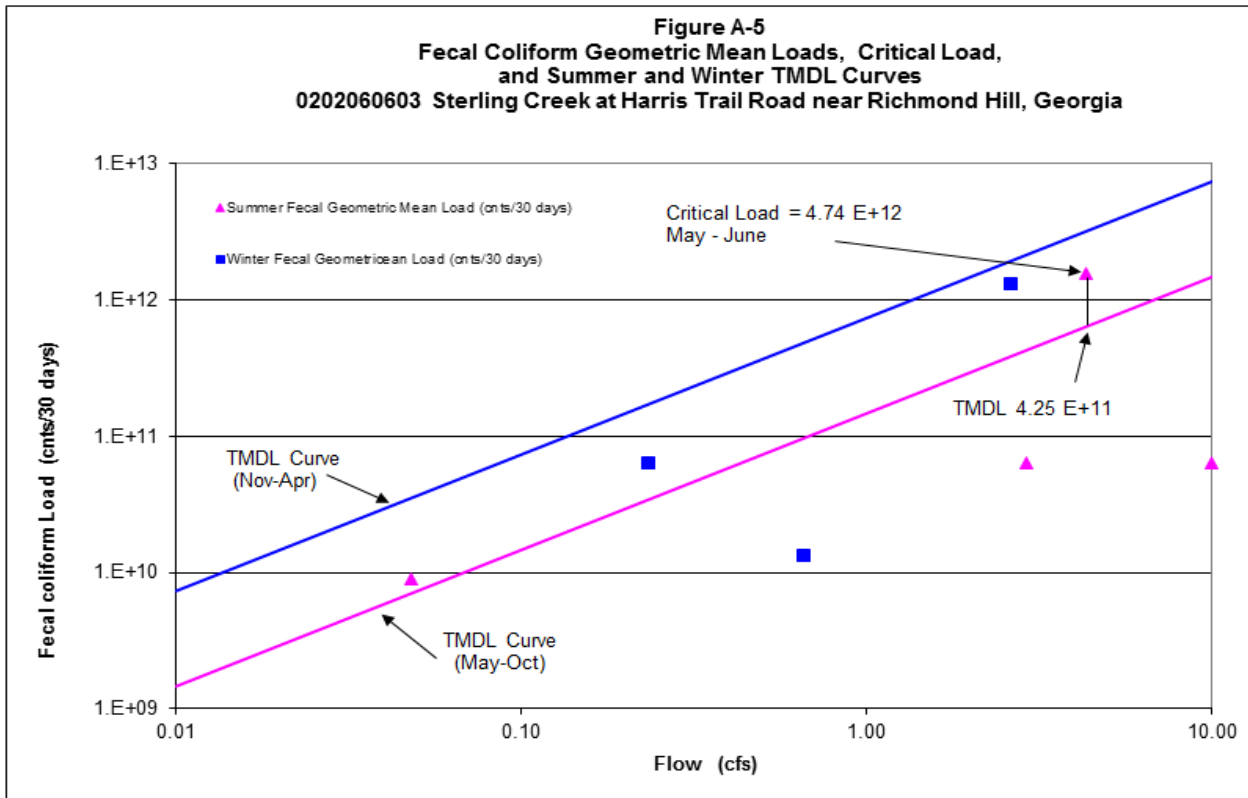


Table A-5. Data for Figure A-5

Date	Observed Fecal Coliform (counts/100 ml)	Estimated Instantaneous Flow On Sample Day (cfs)	Geometric Mean (counts/100 ml)	Mean Flow (cfs)	Geometric Mean Fecal Coliform Loading (counts/30 days)	Geometric Mean TMDL Fecal Coliform Loading (counts/30 days)
3/20/2007	70	1.5				
3/26/2007	20	0.80				
4/2/2007	20	0.24				
4/9/2007	20	0.071	27.4	0.7	1.32E+10	4.84E+11
6/18/2007	110	0.029				
6/26/2007	355	0.043				
7/9/2007	800	0.091				
7/11/2007	130	0.030	252.4	0.05	8.92E+09	7.06E+09
9/12/2007	490	2.4				
9/18/2007	700	6.3				
9/25/2007	1015	3.0				
10/9/2007	170	5.6	493.2	4.3	1.56E+12	6.34E+11
11/26/2007	790	0.13				
12/5/2007	170	0.14				
12/11/2007	700	0.12				
12/18/2007	200	0.53	370.3	0.2	6.32E+10	1.71E+11
2/13/2012	500	0.173				
2/20/2012	3000	1.25				
3/8/2012	700	6.72				
3/13/2012	210	2.35	685.3	2.6	1.32E+12	1.92E+12
5/14/2012	800	0.39				
5/18/2012	400	0.39				
5/30/2012	18000	8.63				
6/13/2012	4300	2.2	2230.9	2.9	4.74E+12	4.25E+11
8/22/2012	1100	4.461				
9/6/2012	800	16				
9/11/2012	80	9.6	412.9	10.0	3.02E+12	1.46E+12
11/29/2012	200	0.82				

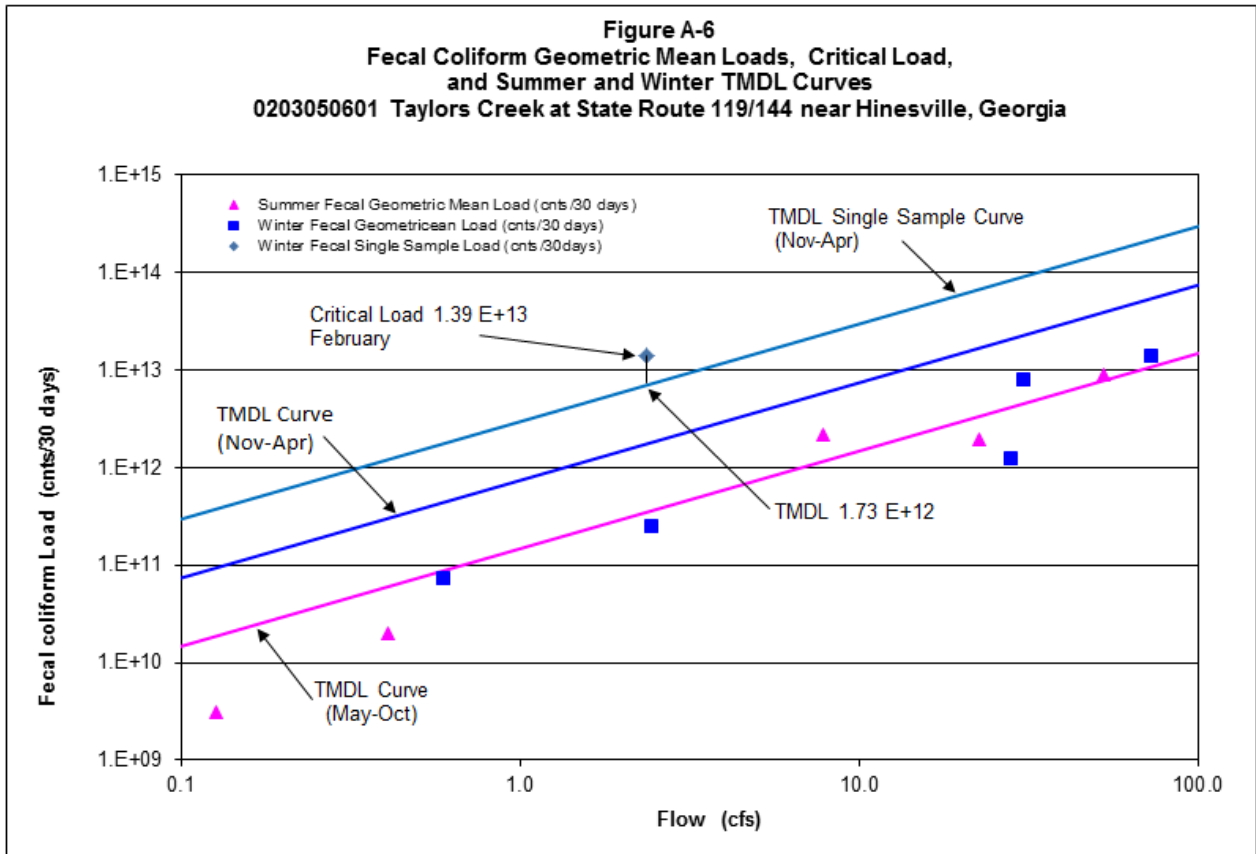


Table A-6. Data for Figure A-6

Date	Observed Fecal Coliform (counts/100 ml)	Estimated Instantaneous Flow On Sample Day (cfs)	Geometric Mean (counts/100 ml)	Mean Flow (cfs)	Geometric Mean Fecal Coliform Loading (counts/30 days)	Geometric Mean TMDL Fecal Coliform Loading (counts/30 days)
3/20/2007	230	46				
3/26/2007	40	37				
4/2/2007	20	19				
4/9/2007	70	9.0	59.9	27.9	1.23E+12	2.05E+13
6/11/2007	70	63				
6/18/2007	140	21				
7/9/2007	80	3.9				
7/11/2007	230	2.8	115.9	22.56	1.92E+12	3.31E+12
9/12/2007	210	2.8				
9/18/2007	1100	15.5				
9/25/2007	790	5.7				
10/9/2007	105	7.5	372.1	7.9	2.15E+12	1.15E+12
11/26/2007	130	1.7				
12/5/2007	40	1.6				
12/11/2007	50	1.8				
12/18/2007	1400	4.7	138.1	2.5	2.49E+11	1.80E+12
2/15/2011	70	112				
3/10/2011	1700	58				
3/15/2011	300	76				
3/17/2011	130	45	261.0	72.9	1.40E+13	5.35E+13
6/7/2011	20	0.33				
6/14/2011	40	0.16				
6/22/2011	30	0.22				
6/28/2011	800	0.92	66.2	0.41	1.98E+10	5.98E+10
8/29/2011	20	0.17				
9/12/2011	80	0.14				
9/14/2011	20	0.10				
9/19/2011	40	0.09	33.6	0.13	3.13E+09	1.86E+10
11/16/2011	60	0.39				
11/21/2011	60	0.55				
11/30/2011	750	0.73				
12/15/2011	300	0.71	168.7	0.6	7.36E+10	4.36E+11
2/13/2012	110	0.59				
2/20/2012	8000	2.4				
3/8/2012	80	76				
3/13/2012	240	43	360.5	30.4	8.05E+12	2.23E+13
5/14/2012	170	1.0				
5/30/2012	5000	8.8				
6/13/2012	130	59				
8/22/2012	500	107				
9/6/2012	400	33				
9/11/2012	60	17	228.9	52.6	8.84E+12	7.72E+12
2/20/2012	8000	2.4	8000.0	2.4	1.39E+13	1.73E+12

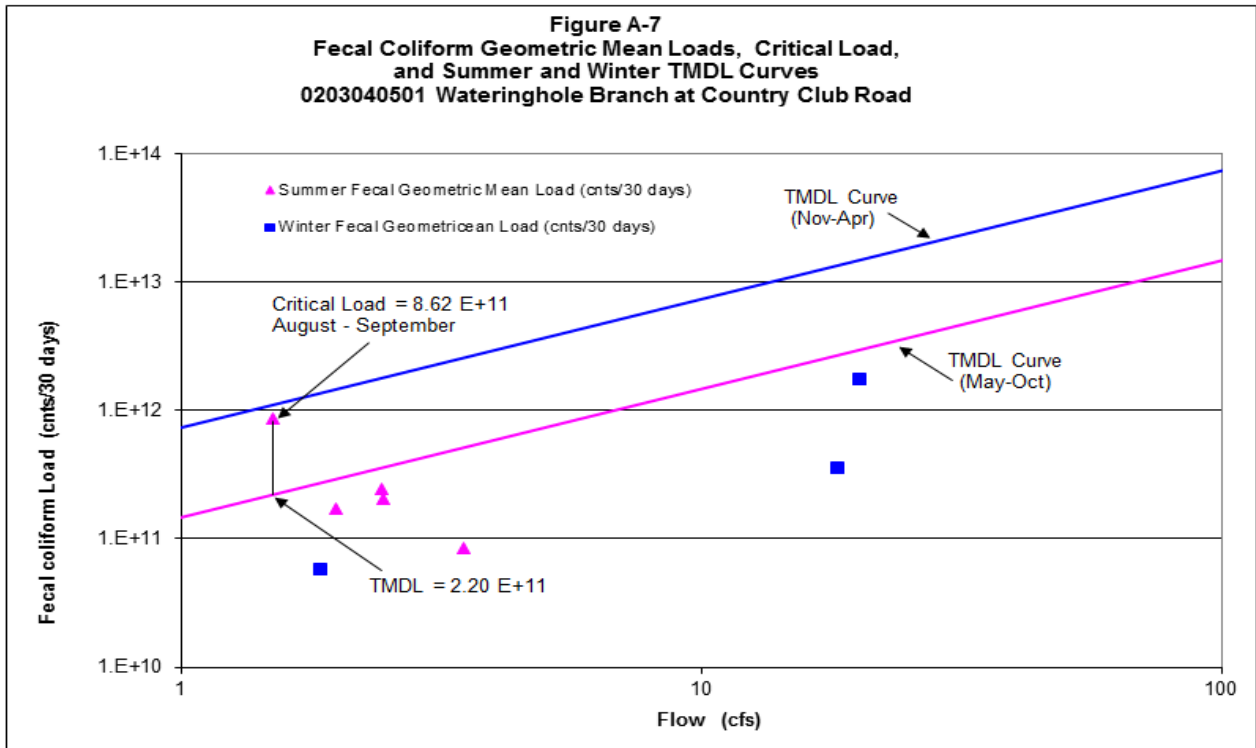
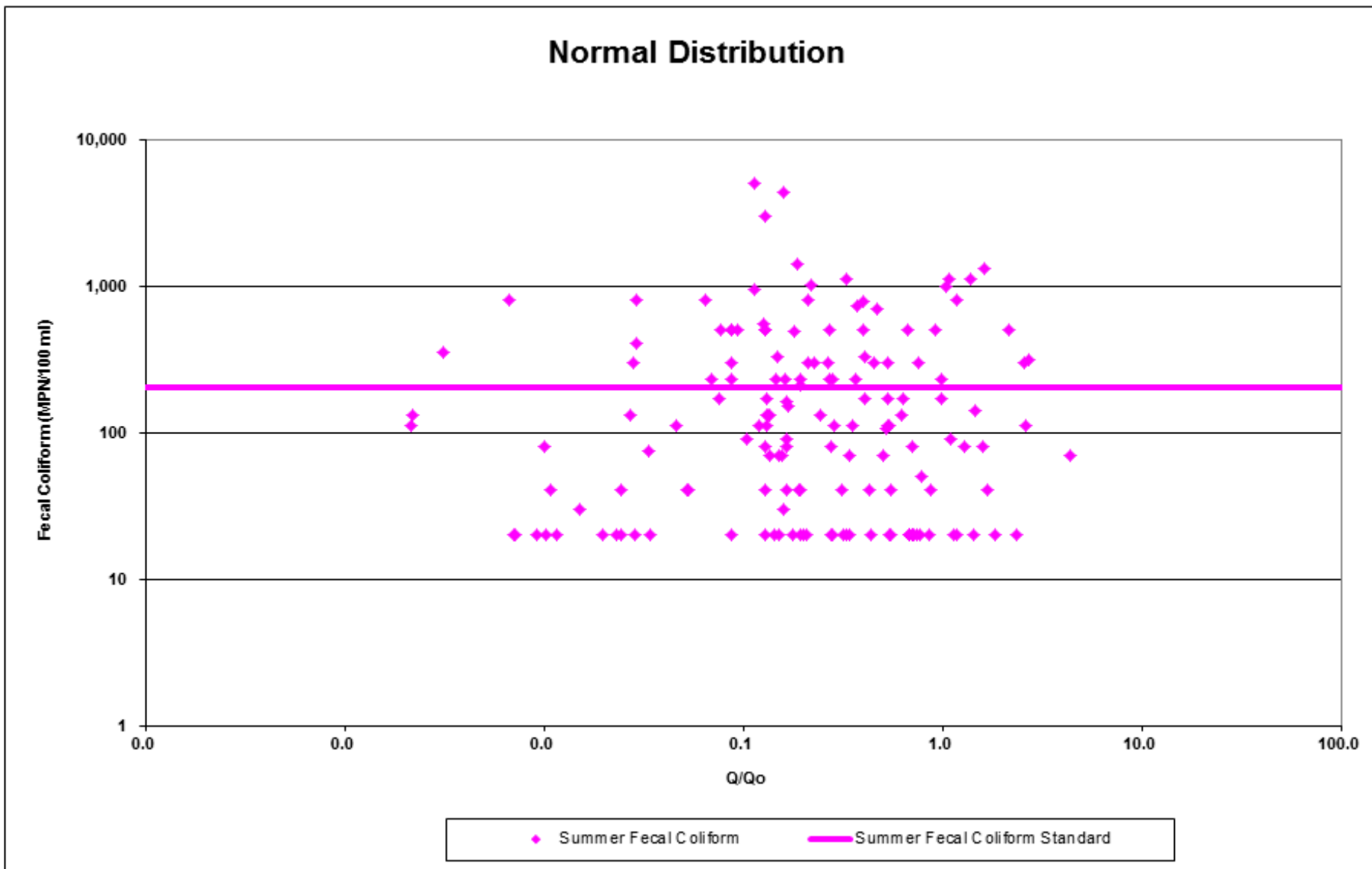


Table A-7. Data for Figure A-7

Date	Observed Fecal Coliform (counts/100 ml)	Estimated Instantaneous Flow On Sample Day (cfs)	Geometric Mean (counts/100 ml)	Mean Flow (cfs)	Geometric Mean Fecal Coliform Loading (counts/30 days)	Geometric Mean TMDL Fecal Coliform Loading (counts/30 days)
1/17/2006	60	32.7				
1/23/2006	20	10.9				
1/30/2006	20	18.0				
2/6/2006	20	11.5	26.3	18.3	$3.53E+11$	$1.34E+13$
5/2/2006	20	2.8				
5/8/2006	20	4.9				
5/10/2006	20	4.0				
5/24/2006	150	2.4	33.1	3.5	$8.52E+10$	$5.15E+11$
7/17/2006	550	1.8				
7/24/2006	500	3.9				
8/1/2006	30	2.3				
8/7/2006	20	1.9	113.3	2.5	$2.04E+11$	$3.61E+11$
10/11/2006	500	1.9				
10/17/2006	80	1.9				
10/24/2006	230	2.1				
10/30/2006	20	2.2	116.5	2.0	$1.70E+11$	$2.92E+11$
3/3/2010	500	24.6				
3/11/2010	110	22.9				
3/17/2010	40	19.6				
3/23/2010	90	13.6	118.6	20.2	$1.76E+12$	$1.48E+13$
5/3/2010	160	2.3				
5/10/2010	70	2.0				
5/26/2010	40	2.3				
6/1/2010	800	3.1	137.6	2.4	$2.45E+11$	$3.57E+11$
8/17/2010	5000	1.6				
8/24/2010	500	1.9				
8/31/2010	500	1.3				
9/7/2010	300	1.3	782.5	1.5	$8.62E+11$	$2.20E+11$
11/16/2010	40	1.6				
11/22/2010	50	1.6				
11/30/2010	40	2.3	43.1	1.9	$5.87E+10$	$1.36E+12$

Appendix B

Normalized Flows Versus Fecal Coliform Plots



Ogeechee River Basin (Fecal Coliform)

