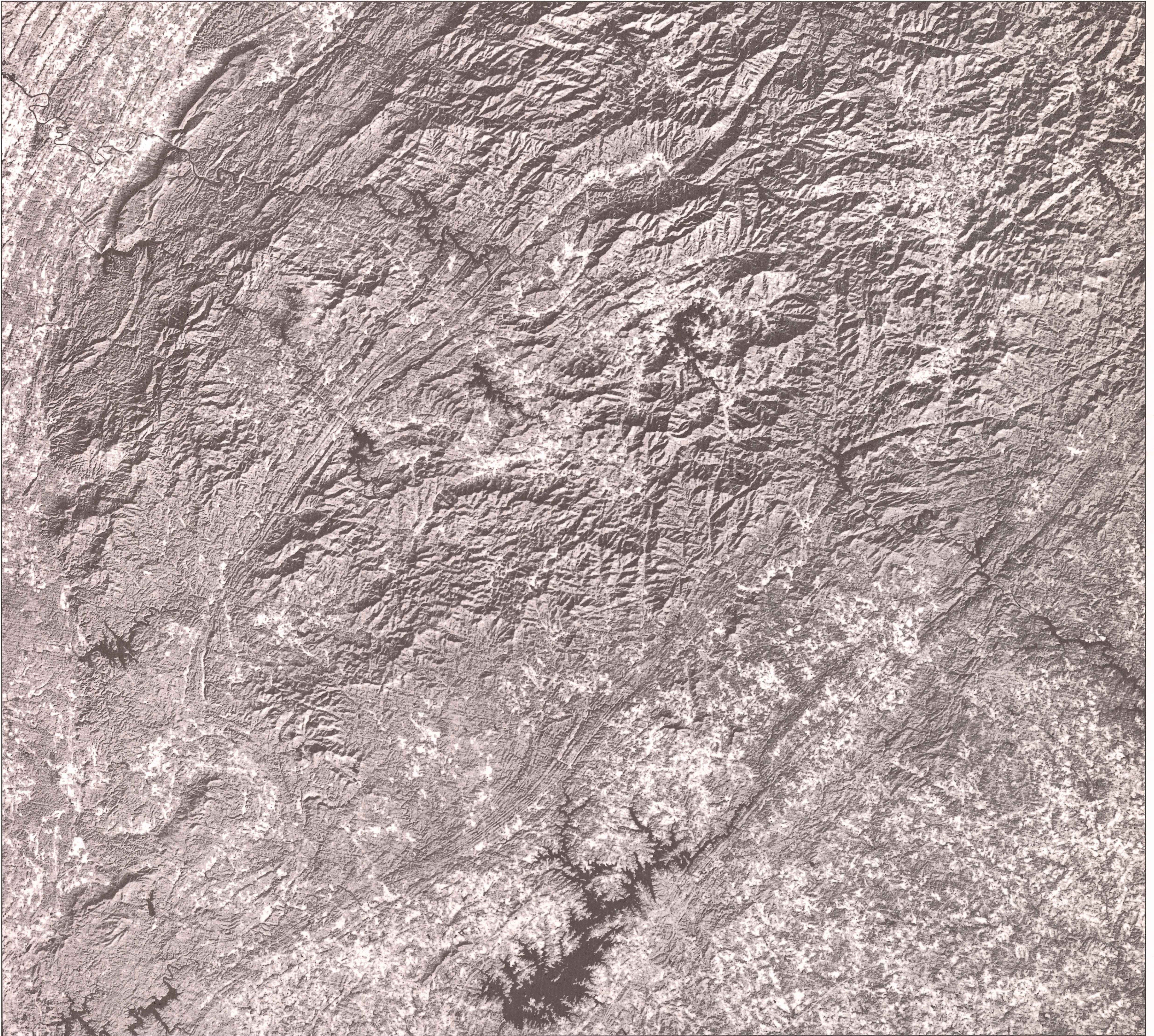


# BLUE RIDGE MOUNTAINS

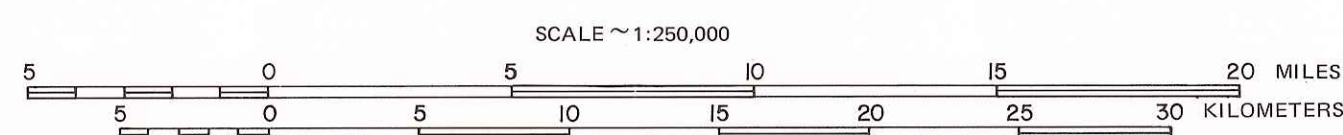


9500 copies of 4 scenes published at a cost of \$0.75 a copy

A band 7 infrared (800-1100 nm) satellite image from the National Aeronautics and Space Administration's Landsat (formerly ERTS) at an altitude of 567 miles (912 kilometers).

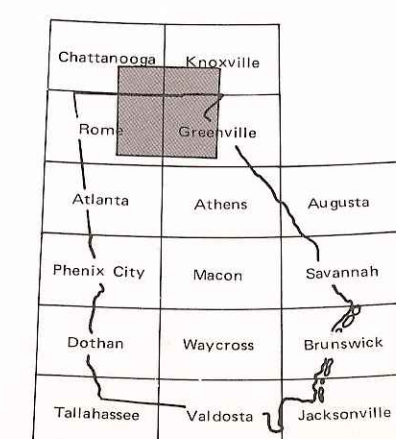
Additional information on this image is available in an atlas of selected Landsat imagery: *Georgia: A View From Space*, published by the Geologic and Water Resources Division.

Date of Image: 2 Dec. 1975      MSS BAND 7      Portion of Image Number: E-2314-15301-7



State of Georgia  
Department of Natural Resources  
Geologic and Water Resources Division  
Atlanta  
1977

IMAGE LOCATION AND INDEX TO U.S.G.S. 1:250,000 TOPOGRAPHIC MAPS



Williams & Heintz Map Corporation, Washington, D. C. 20077