

# LANDCOVER OF GEORGIA

1988 - 1990

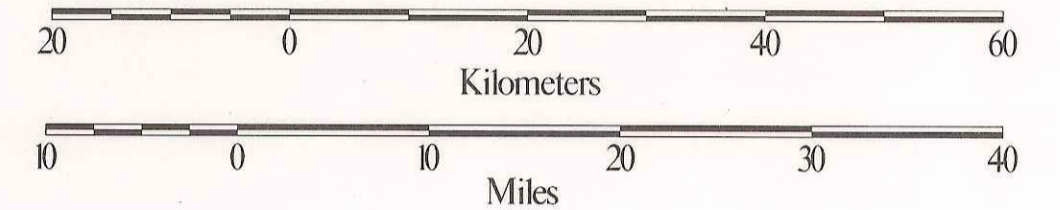
GEORGIA DEPARTMENT OF NATURAL RESOURCES

WILDLIFE RESOURCES DIVISION

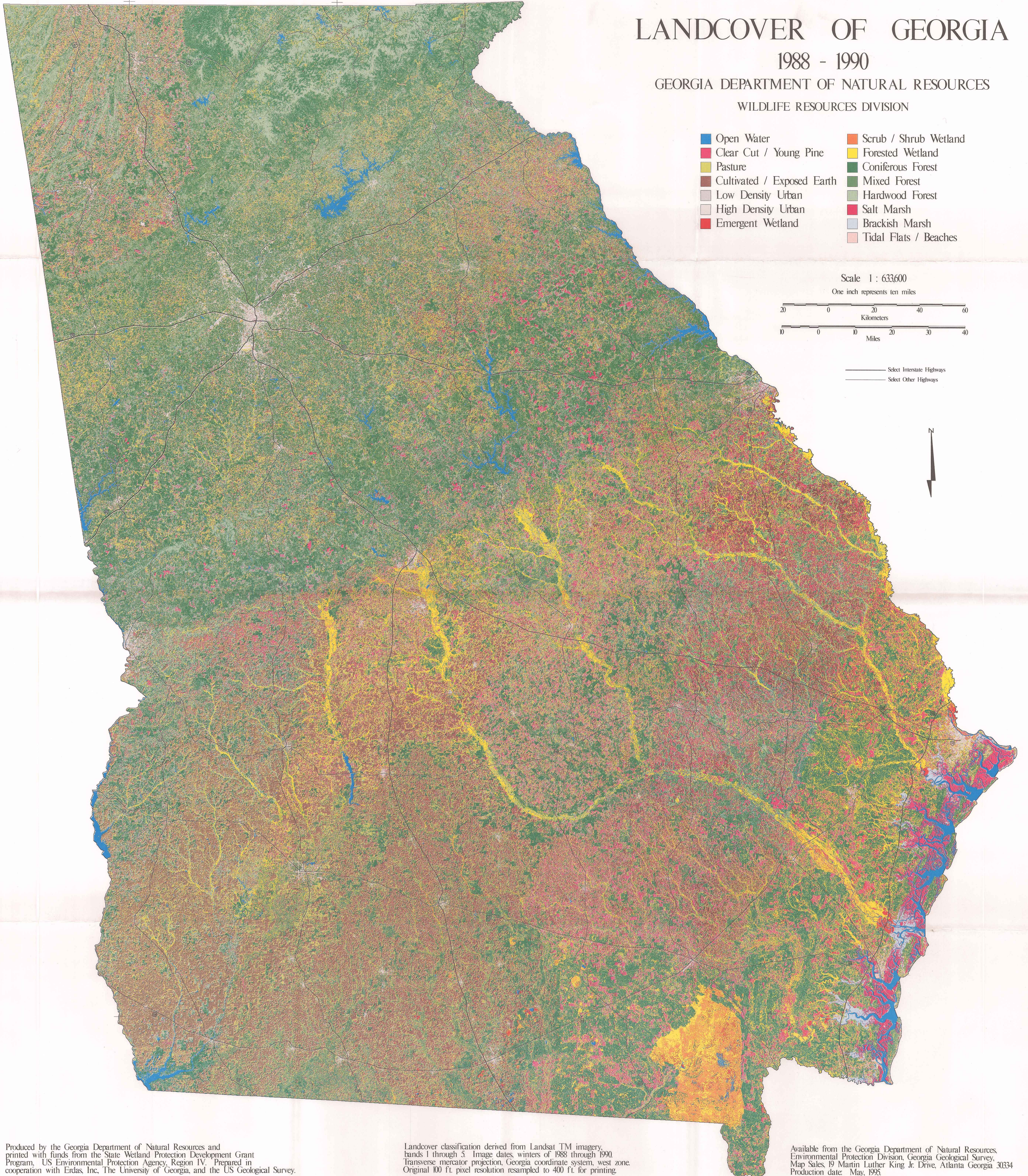
- |             |                            |              |                       |
|-------------|----------------------------|--------------|-----------------------|
| Blue        | Open Water                 | Orange       | Scrub / Shrub Wetland |
| Red         | Clear Cut / Young Pine     | Yellow       | Forested Wetland      |
| Light Green | Pasture                    | Dark Green   | Coniferous Forest     |
| Brown       | Cultivated / Exposed Earth | Medium Green | Mixed Forest          |
| Light Grey  | Low Density Urban          | Light Green  | Hardwood Forest       |
| Dark Grey   | High Density Urban         | Red          | Salt Marsh            |
| Dark Red    | Emergent Wetland           | Light Blue   | Brackish Marsh        |
|             |                            | Pink         | Tidal Flats / Beaches |

Scale 1 : 633600

One inch represents ten miles



- Select Interstate Highways  
— Select Other Highways



Produced by the Georgia Department of Natural Resources and printed with funds from the State Wetland Protection Development Grant Program, US Environmental Protection Agency, Region IV. Prepared in cooperation with Erdas, Inc, The University of Georgia, and the US Geological Survey.

Landcover classification derived from Landsat TM imagery, bands 1 through 5. Image dates, winters of 1988 through 1990. Transverse mercator projection, Georgia coordinate system, west zone. Original 100 ft. pixel resolution resampled to 400 ft. for printing.

Available from the Georgia Department of Natural Resources, Environmental Protection Division, Georgia Geological Survey, Map Sales, 19 Martin Luther King Jr. Drive, Atlanta Georgia 30334. Production date: May, 1995.