

GEOLOGIC MAP OF GEORGIA



Atlanta
1976

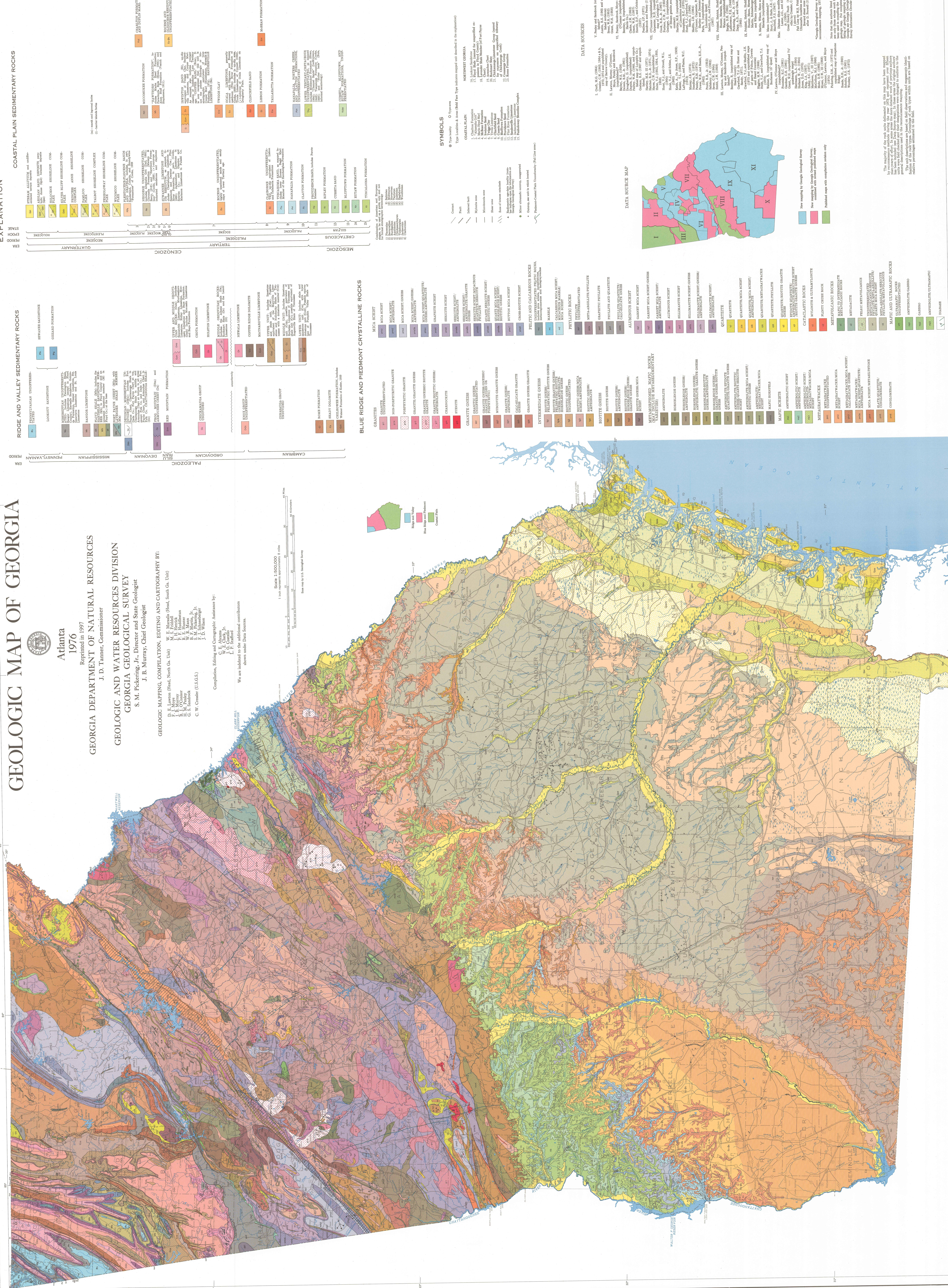
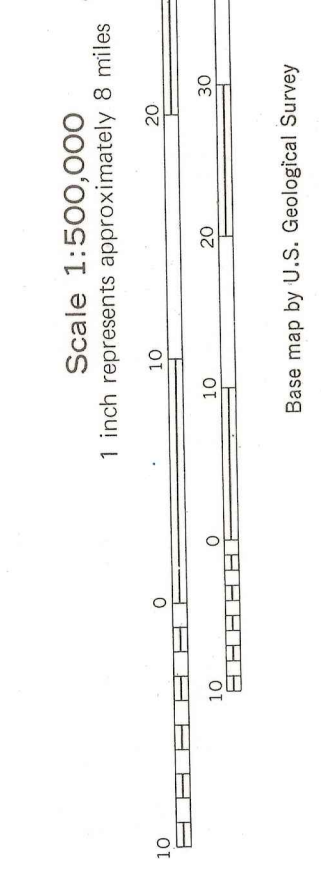
Reprinted in 1977
GEORGIA DEPARTMENT OF NATURAL RESOURCES
J. D. Tanner, Commissioner

GEOLOGIC AND WATER RESOURCES DIVISION
GEORGIA GEOLOGICAL SURVEY
S. M. Pickering, Jr., Director and State Geologist
J. B. Murray, Chief Geologist

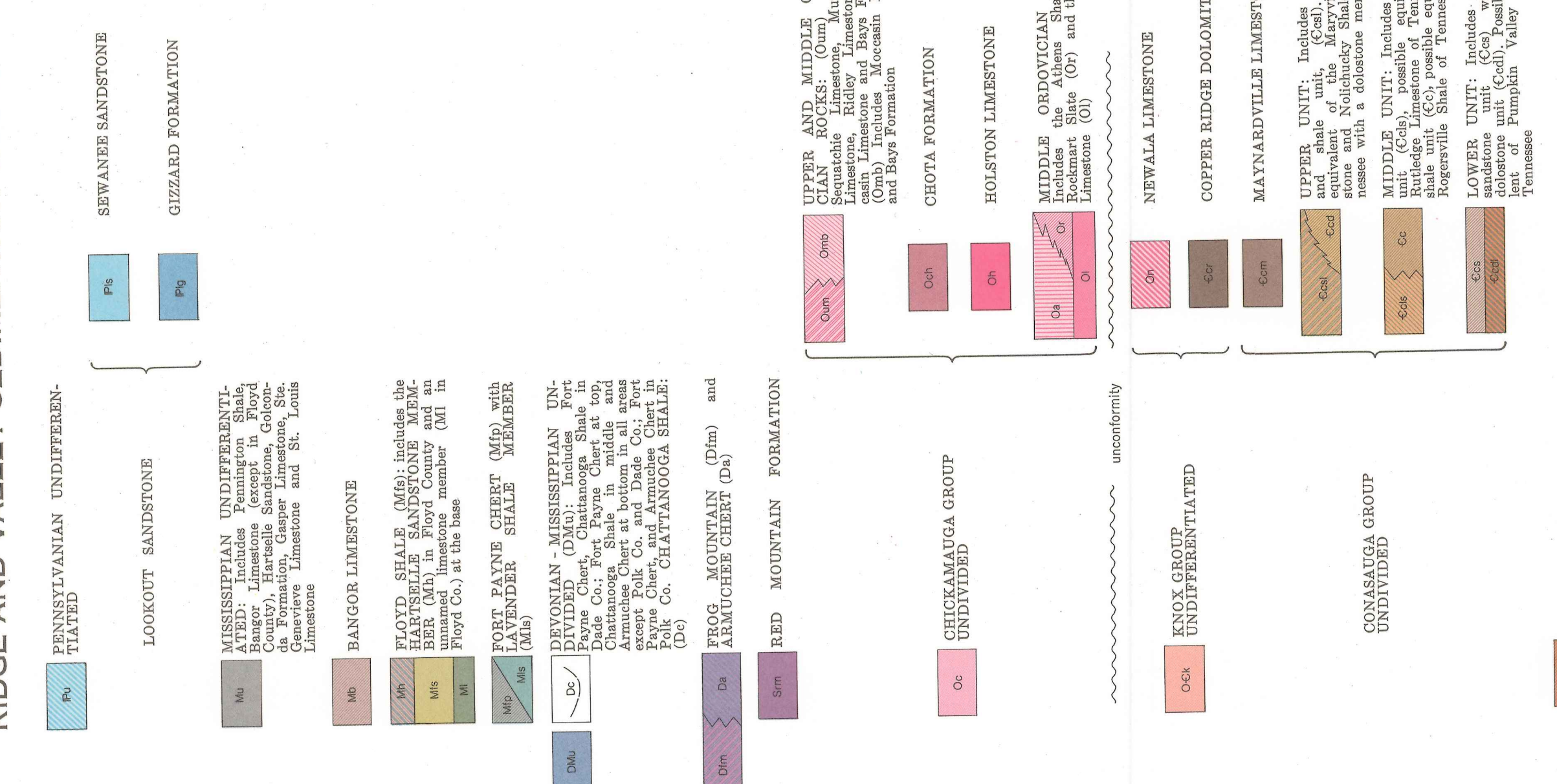
GEOLOGIC MAPPING, COMPILATION, EDITING AND CARTOGRAPHY BY:
W. E. Murray (Head, North Ga. Unit)
F. J. Boyce
M. B. Hendrick
E. F. Hendrick
W. E. Mann
S. M. Pickering, Jr.
S. W. Pickett, Jr.
J. B. Murray
J. D. Wilson

COMPLIANCE, EDITING AND CARTOGRAPHIC ASSISTANCE BY:
C. E. Adams
J. O. Conroy
L. P. Stratford

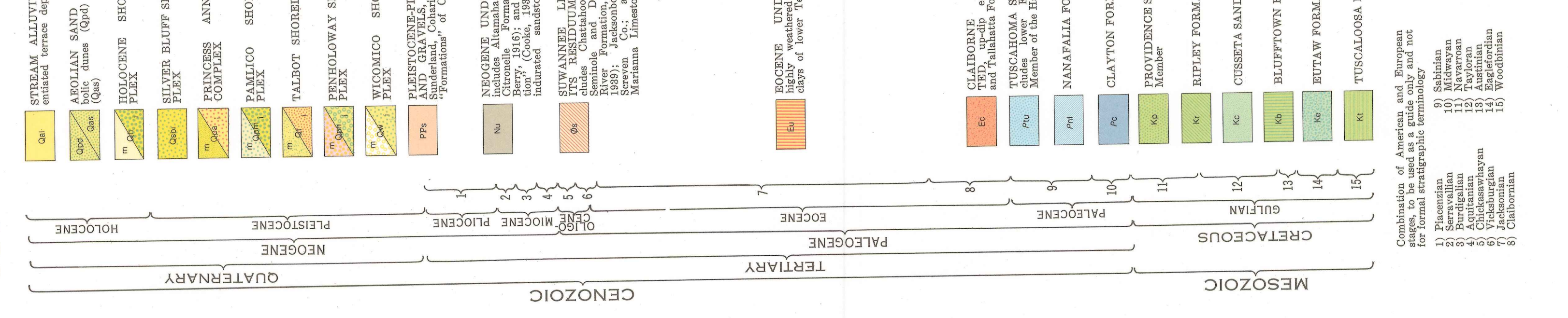
We are indebted to the additional contributors shown under Data Sources.



RIDGE AND VALLEY SEDIMENTARY ROCKS



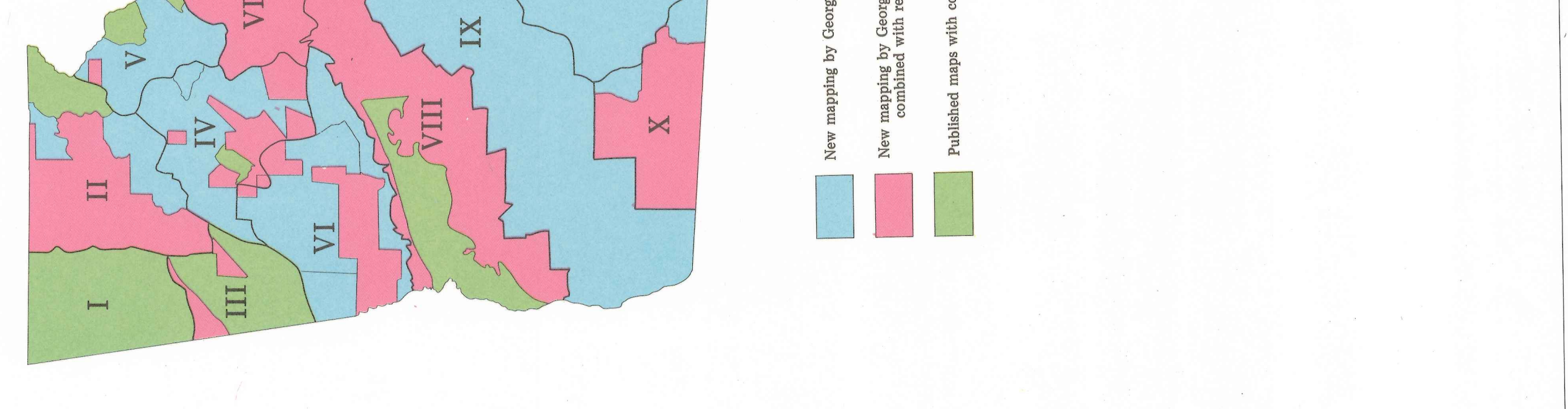
EXPLANATION



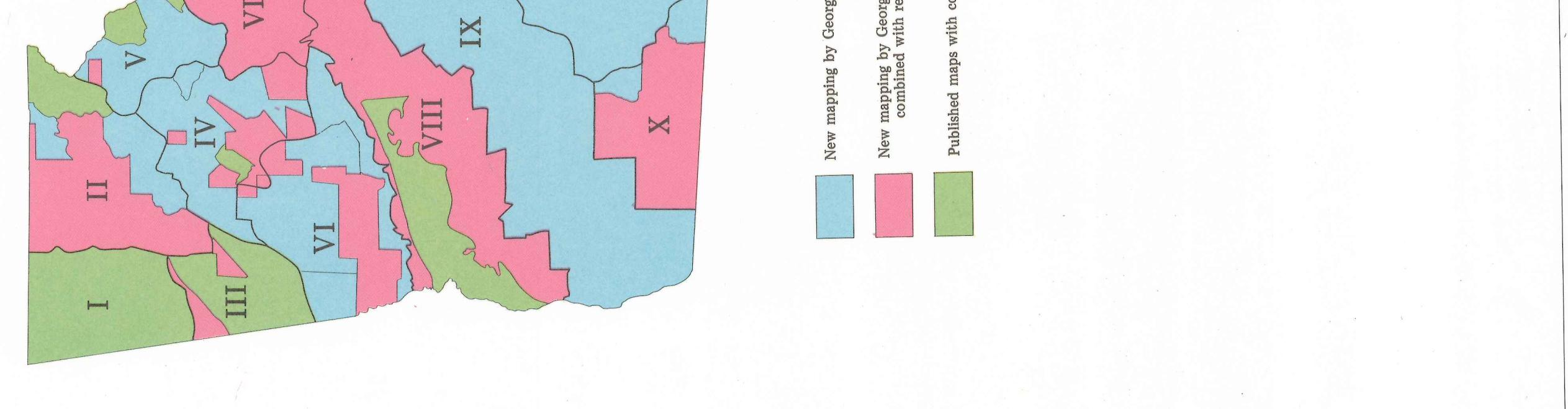
BLUE RIDGE AND PIEDMONT CRYSTALLINE ROCKS



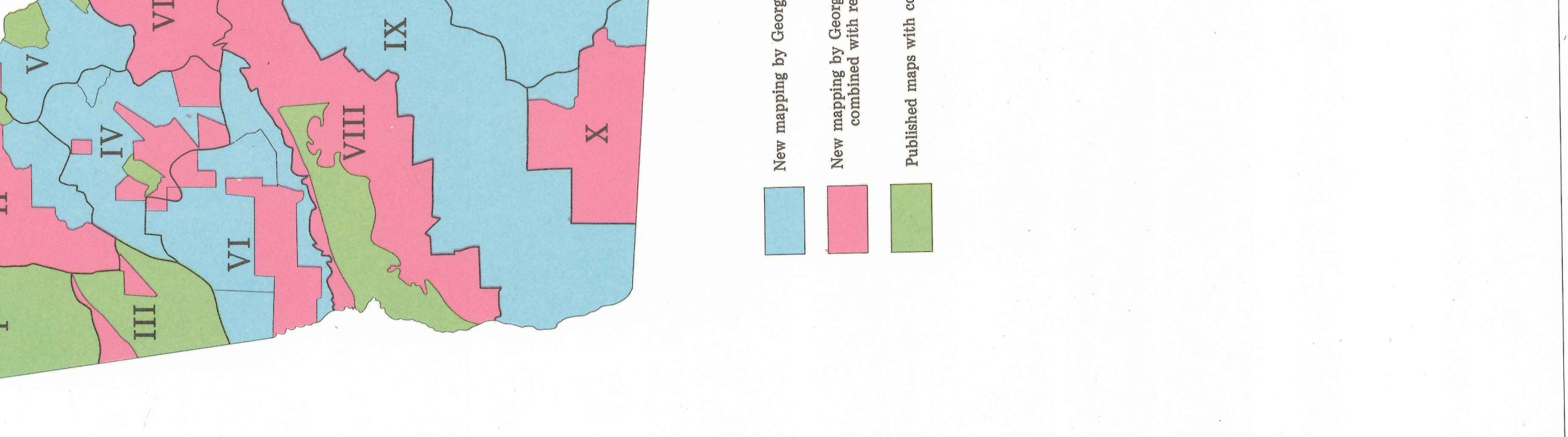
COASTAL PLAIN SEDIMENTARY ROCKS



DATA SOURCES



DATA SOURCE MAP



The majority of the work units delineated on this map have been mapped from aerial photographs. The accuracy of the map is dependent on the quality of the aerial photographs used. The map is not intended to be used for navigation or other purposes where high accuracy is required. The map is a compilation of data from various sources and is not intended to be used as a basis for legal proceedings.