

Georgia Power Plant Bowen
NPDES Permit No. GA0001449
Ash Pond Dewatering Plan

Revised December 2017

Purpose

This Ash Pond Dewatering Plan (Plan) describes the additional procedures, safeguards and enhanced wastewater treatment measures that Georgia Power Company (GPC) will implement to ensure the facility's NPDES permit effluent limitations continue to be met and the receiving waterbody continues to be protected during the ash pond dewatering process. This Plan provides an overview of the wastewater treatment system, describes the key processes, details of the major process control measurements being performed, and explains the effluent monitoring to be completed during dewatering. The plan for final ash pond closure is still being determined, and as such this dewatering plan specifically serves the purpose for dewatering the Recycle Pond as identified in Figure 3. The Recycle Pond is a part of the ash pond that has been disconnected from the facility's wastewater system and no longer serves an operational purpose. Georgia Power will provide further notice to EPD when additional areas of the ash pond are being proposed for dewatering and, where necessary, update and submit to EPD for approval revisions to the Plan.

This Plan will be implemented upon commencement of active ash pond closure activities. Prior to the closure process beginning, ash pond discharges will not cause water levels to drop beyond normal historical operation. Following approval of the dewatering plan by EPD, and prior to commencement of dewatering, Georgia Power will provide EPD with notification of dewatering implementation. As explained below, in addition to the additional requirements implemented during the dewatering process, Georgia Power will continue to meet the effluent limitations of the plant's NPDES permit and comply with all requirements of the NPDES permit.

Wastewater Treatment System

The wastewater treatment system for dewatering the Recycle Pond will be a physical-chemical treatment plant that consists of sodium hypochlorite addition, equalization tank, pH adjustment, followed by solids separation by flocculation/clarification, and finally effluent quality control monitoring (Treatment System). Solids from the clarifier will be managed consistent with the overall ash pond closure process. Figure 1 provides a schematic of the Treatment System.

Location

The Treatment System will be located adjacent to and within the drainage area of the plant's ash pond. This assures that in the unlikely event of an overflow, any treated water from the Treatment System remains within the NPDES wastewater drainage area of the ash pond and will not be discharged except in compliance with this Plan and the NPDES permit.

The Treatment System will operate on an as-needed basis up to 24 hours per day. The Treatment System will be capable of handling a maximum of 2,000 gpm. However, initial operation will be a maximum of 750 gpm, as depicted in Figure 1.

Influent

As shown by Figure 2, wastewater will be pumped to the Treatment System directly from the recycle pond. The recycle pond currently contains approximately 28.7 million gallons of water. The intake for the influent pump is operated to minimize solids inflow to the Treatment System. As the water level in the recycle pond drops, treatment operations may cease until the volume of water in the pond is adequate for operations, or other measures may be implemented to provide sufficient water volume for pumping to the Treatment System. Water levels in the recycle pond fluctuates based upon storm water inflows, upstream ash pond management, and dewatering activities. As overall water volumes in the recycle pond decrease, operation of the Treatment System may be intermittent and on an "as needed" basis, although continuous operation may be utilized in response to wet weather conditions.

GPC will monitor the influent for pH and turbidity. These parameters will be used as a guide for treatment requirements. Influent flow rates will be managed to limit recycle pond draw-down at a rate of no greater than one foot per week, or a rate to ensure structural integrity of the impoundment as determined by the Dam Safety Engineer.

Sodium Hypochlorite Addition

All water pumped to the Treatment System will be treated with sodium hypochlorite to control biological growth in the Treatment System. Treating the water for biological growth improves the Treatment System efficiency and reduces maintenance. Based upon the demand for chlorine in the water being pumped into the Treatment System, sodium hypochlorite addition will be adjusted. The dosage rate for sodium hypochlorite will depend upon the flow rate, sediment load, and water temperature. Residence time will be provided in the equalization tank. The equalization tank also provides a means to recycle water.

pH & Coagulant

After the equalization tank, pH adjustment is performed. The pH of the water pumped to the Treatment System will be continuously tested before it enters the clarifier. Based upon the pH measurement, the pH will be adjusted to the optimal range for coagulation. Following pH adjustment, a coagulant and polymer may be injected into the flow to aid in flocculation prior to entering the clarifier section. The dosage rates for all chemicals will depend upon the flow rates, sediment loads, and inlet pH. Dosage rates will be documented and kept on-site.

Clarifier

The treated water will then flow into a clarifier and the flocculated material will settle to the bottom of the clarifier. A pump will pull the underflow at the bottom of the clarifier towards the underflow discharge point and will be pumped to a tank for solids management. Clarified water will flow in an upward direction over a set of weirs and into the clearwell tanks.

Clearwell Tanks

The clearwell tanks will gravity fill from the weir overflows. The clearwell will be tested for oxidation reduction potential (ORP) so the free chlorine residual from the sodium hypochlorite feed on the inlet is removed before water leaves the Treatment System. As water moves through the Treatment System, some of the free chlorine will be consumed and any remaining chlorine will be neutralized in the clearwell. Sodium bisulfite will be maintained on site, as a backup, to remove any residual chlorine. Continuous effluent monitoring will also be performed to verify the absence of total residual chlorine.

Each tank will have a set of instrumentation that checks the quality of the treated water. During operation, effluent from the clarifier will be continuously tested for flow, pH and turbidity, and this information will be used to monitor the Treatment System operation. If an inline instrument detects a reading above an effluent quality standard (EQS) set point, the effluent will not be discharged to the low volume waste system, but will instead be automatically diverted back to the Recycle Pond.

Upon initial startup of the Treatment System, samples of the treated water will be tested to verify the Treatment System is operating as designed. In the event any system issues are identified, the treated effluent will be recycled back to the Recycle Pond until the treatment system efficacy is established. Only after initial treatment efficacy is established will treated effluent be routed to the Low Volume Waste Pond (Outfall 01A).

Operation

The operational oversight of the Treatment System will be performed by a certified wastewater treatment plant operator in accordance with the certification requirements of the Georgia Water And Wastewater Treatment Plant Operator's and Laboratory Analysts rule.

Figure 1
Plant Bowen Treatment System Schematic

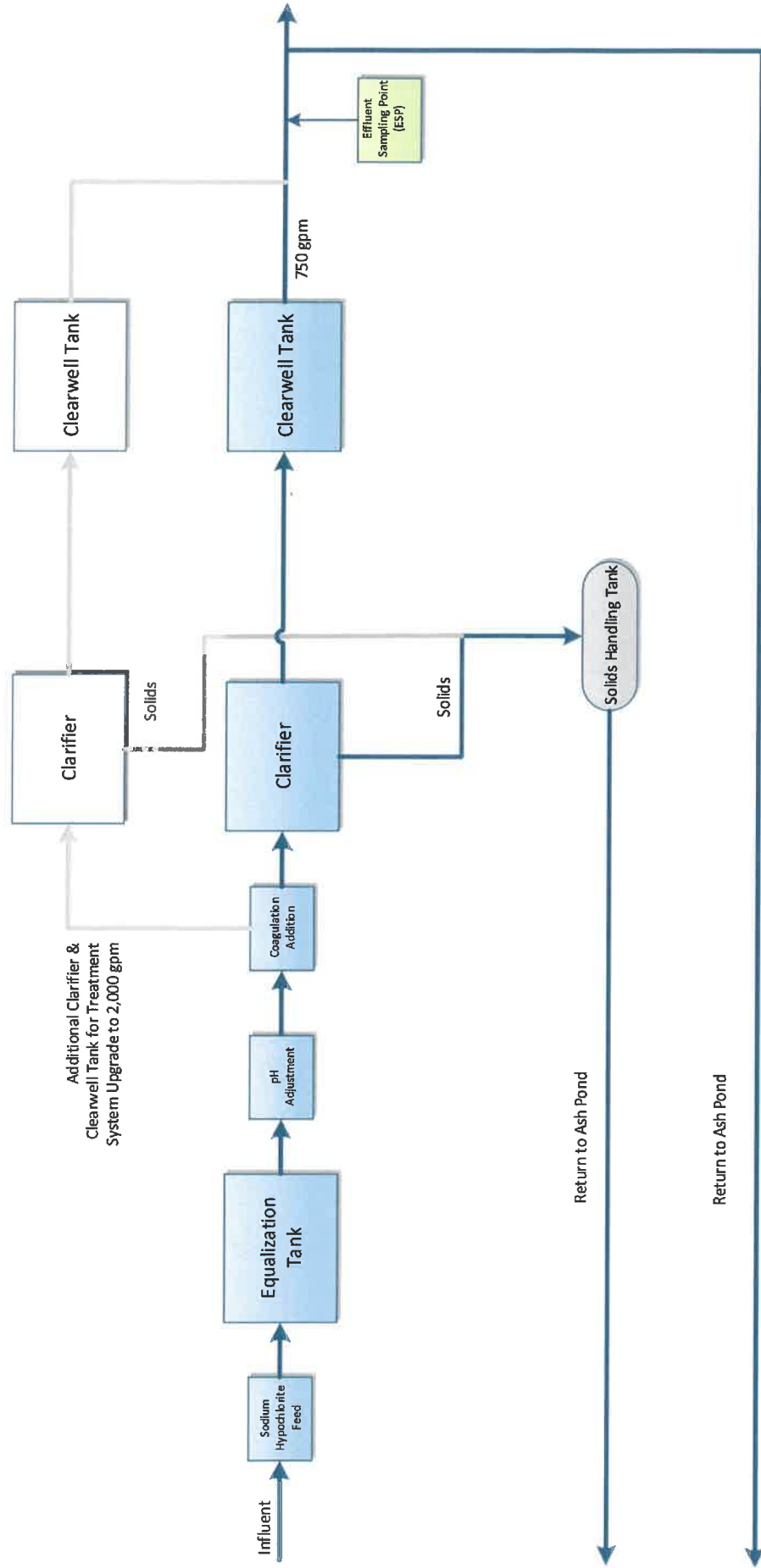


Figure 2
Plant Bowen Ash Transport and Low Volume Waste System

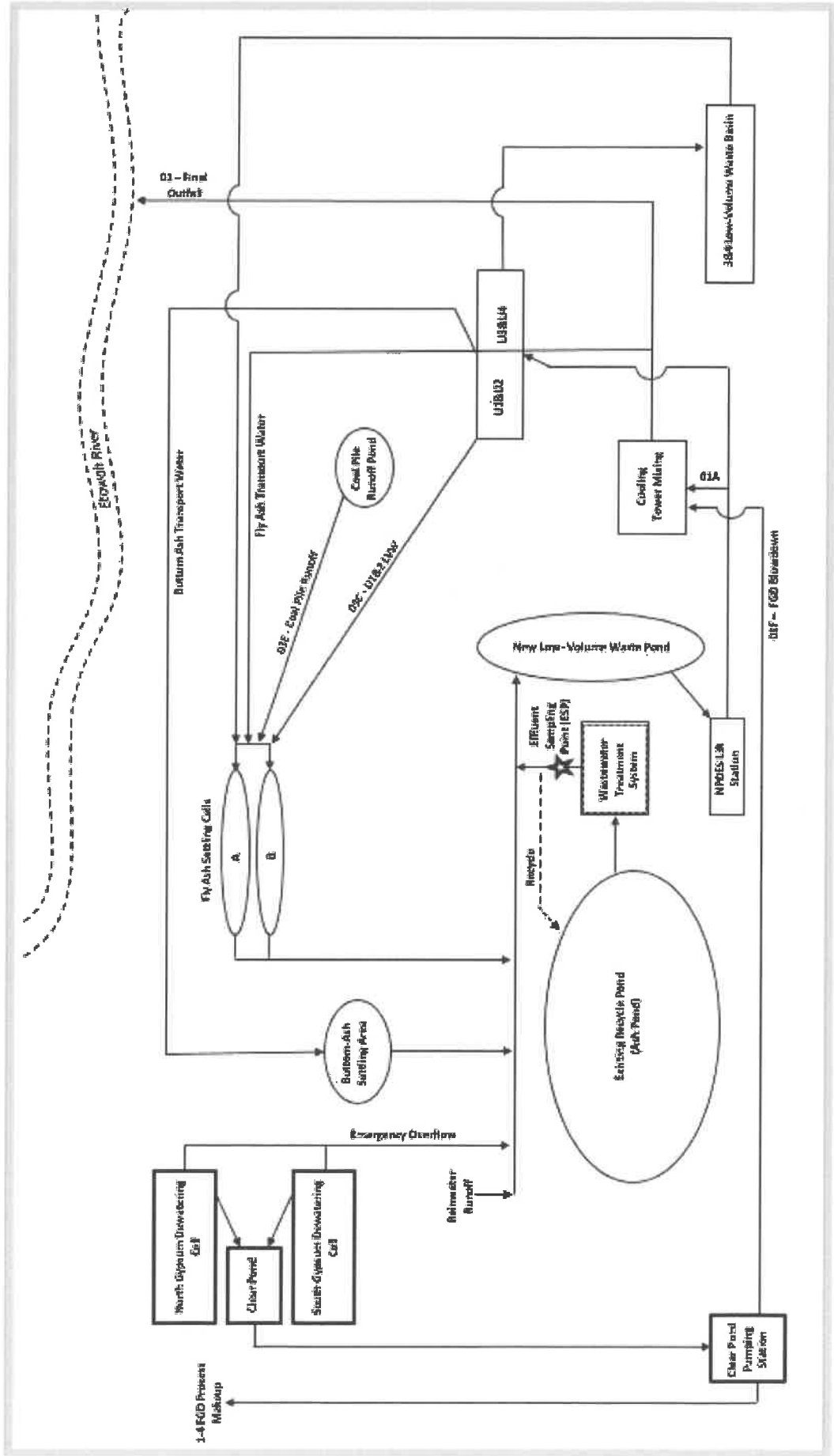
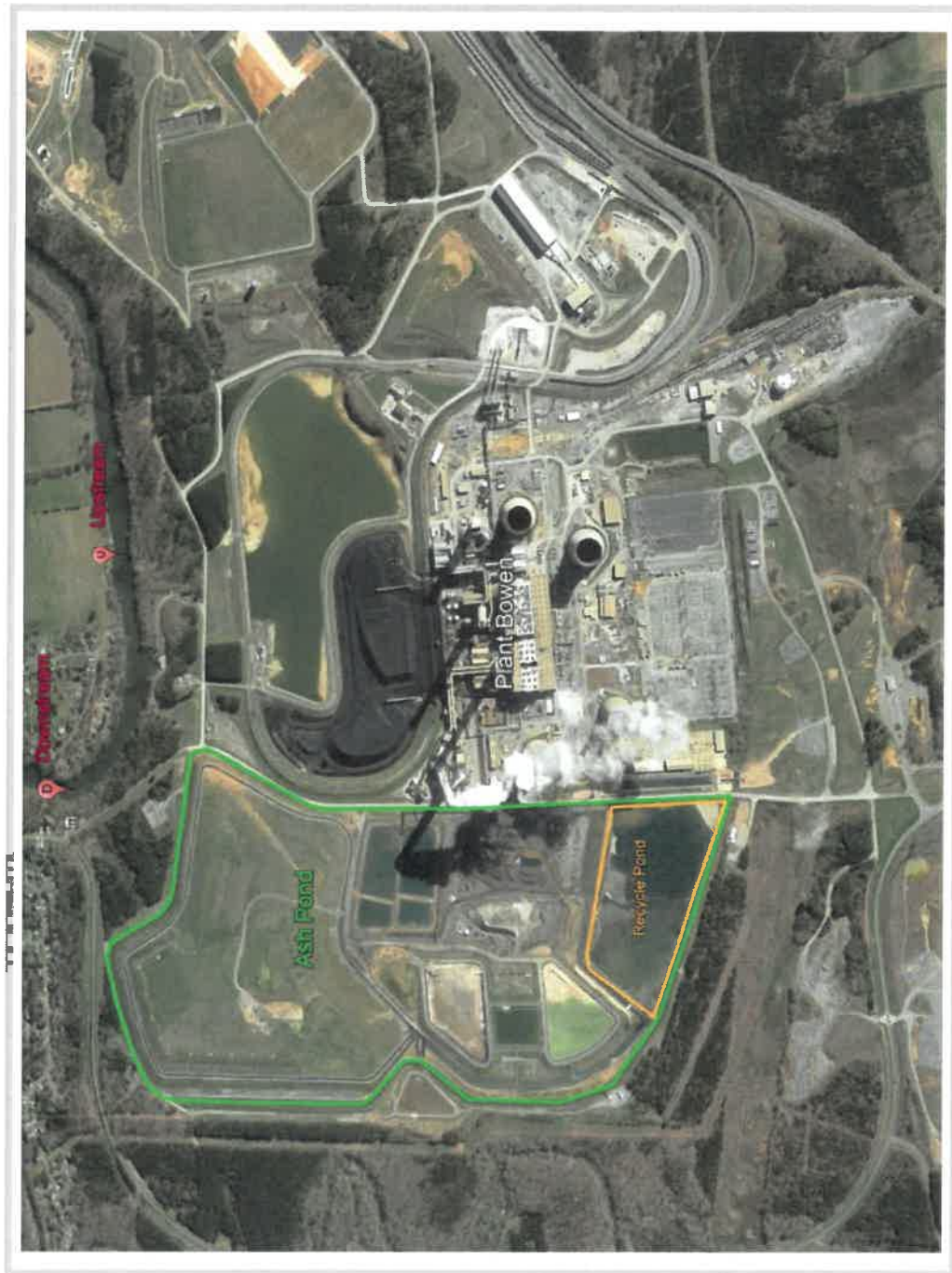


Figure 3
Plant Bowen Ash Pond



Process Control Monitoring

Each day following Treatment System startup, pH and turbidity of the influent and effluent of the System will be verified prior to discharge/commingling with other wastestreams. Discharge will occur to the new Low Volume Waste Pond along with other plant waste streams. Effluent sampling of the Treatment System discharge for turbidity and pH will be performed continuously in the discharge line following the clearwell tank. This sampling point will be labeled as ESP (Effluent Sampling Point). Upon verification that the Treatment System performs as expected, the discharge will be routed to the low volume waste system.

During discharge operations, pH, chlorine and turbidity are continuously measured and the discharge will be visually inspected. If the treated effluent indicates a change during operations, discharge to the permitted outfall will be automatically diverted and the treated water will be returned to the Recycle Pond while adjustments are made. After any issues are resolved, the Treatment System will be returned to normal operation with discharge to the low volume waste system.

Maintenance

Instrumentation for use on the site will be maintained to ensure optimal performance and provide accurate results. Each piece of technical equipment will be calibrated at the manufacturer's recommended intervals and more often if deemed necessary by on-site personnel. The instrumentation includes a turbidity meter, a pH meter, residual chlorine meter, flow meters, and the chemical feed pumps.

Testing

Samples are collected from both the influent and the Treatment System ESP to guide system operation and compare against the Effluent Quality Standards (EQSs) listed below. The results will be used to verify that the Treatment System is performing optimally, as well as to obtain data to establish and update the correlation between the TSS and turbidity of the Treatment System effluent. TSS/turbidity control is an indicator of treatment system efficient operation that is correlated to metals removal efficiencies as further confirmed by weekly monitoring results. The initial TSS and turbidity correlation curve and EQSs results will be provided to EPD prior to commencement of dewatering activities. All EQSs results including TSS / turbidity correlation curves will be available onsite for EPD review. TSS correlation to turbidity will be used to establish a turbidity set-point for the effluent. Effluent reaching this set-point will be recycled back to the Recycle Pond for additional treatment.

Effluent Quality Standards (EQSs)

- **pH:** 6.0 to 9.0 operational limits
- **Turbidity:** Determined by TSS correlation
- **Flow rate:** <750 gpm (if necessary, up to 2,000 gpm)
- **Total Suspended Solids (TSS):** <26 mg/L; monitored by turbidity correlation
- **Oil & Grease:** <15 mg/L daily average with 20 mg/L daily maximum over a monthly period
- **Total Residual Chlorine:** Zero

Analytical Instrument Description

The following instrumentation (or equivalent) will be used:

- **pH:** Hach DPD1P1 pH probe with a Hach SC200 transmitter
- **Turbidity:** Hach 1720E Turbidimeter with a Hach SC200 transmitter
- **Chlorine:** Wallace and Tiernan SFC/ Analyzer with a Hach SC200 transmitter
- **Flow rate:** Siemens Mag 5100 W 8" magnetic flow meter with Siemens Mag5000 transmitter

Monitoring and Reporting

Stream Monitoring

Effluent Characteristics mg/L or (Units)	Requirement	Measurement Frequency	Sample Type	Sample Location
pH (s.u.)	Report	2/Month	Grab	Upstream & Downstream*
TSS	Report	2/Month	Grab	Upstream & Downstream*
Oil & Grease	Report	2/Month	Grab	Upstream & Downstream*
Turbidity (NTU)	Report	2/Month	Grab	Upstream & Downstream*
TDS	Report	2/Month	Grab	Upstream & Downstream*
BOD _{5-day}	Report	2/Month	Grab	Upstream & Downstream*
Copper, total	Report	2/Month	Grab	Upstream & Downstream*
Selenium, total	Report	2/Month	Grab	Upstream & Downstream*
Arsenic, total	Report	2/Month	Grab	Upstream & Downstream*
Mercury, total	Report	2/Month	Grab	Upstream & Downstream*
Chromium, total	Report	2/Month	Grab	Upstream & Downstream*
Lead, total	Report	2/Month	Grab	Upstream & Downstream*
Cadmium, total	Report	2/Month	Grab	Upstream & Downstream*
Zinc, total	Report	2/Month	Grab	Upstream & Downstream*
Nickel, total	Report	2/Month	Grab	Upstream & Downstream*
Ammonia	Report	2/Month	Grab	Upstream & Downstream*
TKN	Report	2/Month	Grab	Upstream & Downstream*
Nitrate/Nitrite	Report	2/Month	Grab	Upstream & Downstream*
Organic Nitrogen	Report	2/Month	Grab	Upstream & Downstream*
Phosphorus	Report	2/Month	Grab	Upstream & Downstream*
Ortho-phosphorus	Report	2/Month	Grab	Upstream & Downstream*
Hardness	Report	2/Month	Grab	Upstream & Downstream*

Sampling and monitoring to be performed using Standard Methods as provided for in 40 CFR Part 136, which will be sufficiently sensitive.

* Instream sampling shall occur at approximately 1000ft upstream and downstream of the final discharge (Outfall 01) to the Etowah River, and as depicted on Figure 3.

Effluent Monitoring

Effluent Characteristics mg/L or (Units)	Monthly Average	Daily Maximum	Measure Frequency	Sample Type	Sample Location
Flow (MGD)	Report	Report	Daily	Continuous	Effluent Sampling Point (ESP)
pH (s.u.)	Report	Report	Daily	Continuous	ESP
TSS	Report	Report	Weekly	Grab	ESP
Oil & Grease	Report	Report	Weekly	Grab	ESP
Turbidity (NTU)	Report	Report	Daily	Continuous	ESP
TDS	Report	Report	Weekly	Grab	ESP
TRC	Report	Report	Daily	Continuous	ESP
BOD _{5-day}	Report	Report	Weekly	Grab	ESP
Copper, total	Report	Report	Weekly	Grab	ESP
Selenium, total	Report	Report	Weekly	Grab	ESP
Arsenic, total	Report	Report	Weekly	Grab	ESP
Mercury, total	Report	Report	Weekly	Grab	ESP
Chromium, total	Report	Report	Weekly	Grab	ESP
Lead, total	Report	Report	Weekly	Grab	ESP
Cadmium, total	Report	Report	Weekly	Grab	ESP
Zinc, total	Report	Report	Weekly	Grab	ESP
Nickel, total	Report	Report	Weekly	Grab	ESP
Ammonia	Report	Report	Weekly	Grab	ESP
TKN	Report	Report	Weekly	Grab	ESP
Nitrate/Nitrite	Report	Report	Weekly	Grab	ESP
Organic Nitrogen	Report	Report	Weekly	Grab	ESP
Phosphorus	Report	Report	Weekly	Grab	ESP
Ortho-phosphorus	Report	Report	Weekly	Grab	ESP
Hardness	Report	Report	Weekly	Grab	ESP

Sampling and monitoring to be performed using Standard Methods as provided for in 40 CFR Part 136, which will be sufficiently sensitive. ESP is the discharge from the dewatering treatment system prior to the low volume waste pond and prior to mixing with any other wastestreams.

Reporting and Notification

Effluent and Instream monitoring results will be submitted to EPD via e-mail by the 15th day of the month following the sampling period. Results shall be submitted in an excel spreadsheet to both the EPD compliance office and the Industrial Permitting Unit. Laboratory analysis and data sheets shall be retained on site. The first report will be submitted the month following system startup.

Immediate (within 24 hours) notification to both the EPD Compliance Office and Industrial Permitting Unit will occur if any of the EQSs for pH, total residual chlorine, or turbidity are not achieved, and the automatic recirculation system fails.