

FECAL COLIFORM TMDL DEVELOPMENT**Acorn Creek CREEK WATERSHED,****Chattahoochee -RIVER BASIN****Introduction:**

Levels of fecal coliform can be elevated in water bodies as the result of both point and nonpoint sources of pollution. Section 303(d) of the Clean Water Act and EPA's Water Quality Planning and Management Regulations (40 CFR Part 130) require states to develop total maximum daily loads (TMDLs) for their water bodies that are not meeting designated uses under technology-based controls for pollution. The TMDL process establishes the allowable loadings of pollutants or other quantifiable parameters for a water body based on the relationship between pollution sources and in-stream water quality conditions, so that states can establish water-quality based controls to reduce pollution from both point and nonpoint sources and restore and maintain the quality of their water resources (USEPA, 1991).

General Steps to the Fecal Coliform TMDL Development**Step 1. Problem Definition**

Objective: *Identify the background information and framework for a specific TMDL-listed water that will guide the TMDL development process.*

The impaired stream segment has a designated use classification of Fishing.

The data from the Georgia 305(b) report were used for determining the stream segment impairment and for listing the water on the Georgia 1996 303(d) list. The determination for impairment and inclusion on the Georgia 303(d) list, was that greater than 20% of the samples had a fecal coliform concentration greater than 400 cfu/100 ml, where a cfu is a coliform unit that can be measured as membrane filter or multiple tube methods. This screening determination may or may not indicate a water quality standard violation since the Georgia fecal coliform standard is based on a 30 day geometric mean.

Step 2. Target Identification

Objective: *Identify numeric or measurable parameter target values that can be used to evaluate the TMDL and restoration of water quality in the listed water body.*

The target levels are the fecal coliform levels established in Georgia's Water Quality Standards. Georgia State Water Quality Standards for Fecal Coliform are established in Georgia Rule and Regulations for Water Quality, November 1996. The criterion for fecal coliform bacteria from May through October is a 30 day geometric mean of 200 mpn/100 ml and from November through April a 30 day geometric mean of 1,000 mpn/100 ml with a maximum of 4,000 mpn/100 ml. Note mpn is defined as most probable number and is equivalent to cfu.

Step 3. Source Assessment

Objective: *Characterize type, magnitude, and location of sources of fecal coliform loading to the water body.*

Potential Sources of Fecal Coliform:

Both point and nonpoint sources may contribute fecal coliform to a water body. Potential sources of fecal coliform are

numerous, and often occur in combination. Poorly treated municipal sewage comprises a major source of fecal coliform. Urban storm water runoff and combined sewer overflows (CSOs) can be a source of fecal coliform. Rural storm water runoff can transport significant loads of fecal coliform from livestock pastures and animal feedlots. Wildlife can also contribute fecal coliform. Most sources of fecal coliform loads can be assigned to two broad classes: point source loads, and nonpoint source loads.

Point Source Loads: *Loads from Municipal and Industrial Water Pollution Control Plants*

The greatest potential source of human fecal coliform is raw sewage. Raw sewage typically has a total coliform count of 10^7 to 10^9 MPN/100 ml (Novotny et al., 1989), along with significant concentrations of fecal coliform bacteria, viruses, protozoans, and other parasites. Typical treatment in a municipal plant reduces the total coliform count in effluent by about 3 orders of magnitude, to the range of 10^4 to 10^6 MPN/100 ml. Georgia requires disinfection of the treated wastewater discharge which results in significantly reducing the fecal coliform levels and a regulatory NPDES permit limit of 200 colonies/100 ml.. Raw sewage, while usually not discharged intentionally, may reach water bodies through leaks in sanitary sewer systems and for a few communities in Georgia through combined sewer overflows (CSOs).

Nonpoint Sources Loads:

Nonpoint sources of fecal coliform are typically separated into urban and rural components. Runoff and load generation processes differ systematically between these environments. In urban or suburban settings with high amounts of paved impervious area, important sources of loading are surface storm flow, failing septic tanks, and leakage of sanitary sewer systems. In rural settings, impervious area is usually much lower, and sources of fecal coliform may include diffuse runoff of animal wastes associated with the erosion of sediments, runoff from concentrated animal operations, and failing septic tanks.

Most nonpoint loads result from storm water and rainfall washoff, and estimation of load requires both flow volume and pollutant concentration in runoff. Modeling techniques can provide good estimates of surface storm flow volume, in both urban and rural settings. Modeling is typically conducted for single targets such as fecal coliform. All loading data are complicated by a lack of data and high variability in available monitoring data.

Fecal coliform bacteria have been detected in storm runoff from urban areas at densities high enough to suggest a potential health risk. Fecal coliform concentrations in urban storm water may be higher than concentrations in treatment plant effluent. The origins of urban bacterial loads are diverse, and may include leakage from sanitary sewers, failing septic tanks and direct loading of human fecal matter, as well as bacteria derived from dog and cat feces (which generally contain few fecal coliform of concern to humans).

Buildup and washoff of pollutants on urban impervious surfaces may be simulated directly. This physically based approach is incorporated into many popular storm water models, such as the Storm Water Management Model (SWMM) and Hydrological Simulation Program-Fortran (HSPF). Buildup refers to all of the complex spectrum of dry-weather processes that deposit or remove pollutants between storms, including deposition, street cleaning, etc. These processes lead to an accumulation of material associated with solids which are then Washed off during storm events.

The rural nonpoint sources of fecal coliform of greatest concern are typically associated with animal operations, in which large quantities of fecal matter are generated. Fecal coliform from these areas may reach water bodies either through direct runoff, or following the spreading of waste on fields. Land application of municipal waste sludge may also be a significant source of fecal coliform load. Outside of these areas, a lower background loading rate can be expected, resulting from the net inputs of domestic and wild animals, and so on.

Step 4. Linkage Between Numeric Targets and Sources - Model Development

Objective: *Define a linkage between the selected targets and the identified sources. The linkage or model is defined as the cause and effect relationship between the selected endpoint and the identified sources. This linkage can be derived*

from data analysis, best professional judgment, and previously documented relationships. The linkage or model is used in determining what loading is acceptable to achieve the target value. Margin of safety is also considered in the linkage or modeling effort.

The model is essential to defining a relationship between the source and the impact on the receiving water. Where appropriate monitoring data are available, the linkage between fecal coliform loading and exposure concentrations can be accomplished by comparing historical records of load and exposure concentrations empirically. In other cases, the linkage will need to be assessed using water quality models that attempt to address transport of fecal coliform and natural die-off in the environment.

The U.S.EPA BASINS system and the Nonpoint Source Model (NPSM) were used to derive the linkages between the measured fecal coliform levels in the stream and the sources of fecal coliform. Better Assessment Science Integrating Point and Nonpoint Sources (BASINS) is a multipurpose environmental analysis system for use in performing watershed and water quality-based studies. A geographic information system (GIS) provides the integrating framework for BASINS. GIS organizes spatial information so it can be displayed and provides techniques for analyzing land scape information. The NPSM simulates nonpoint source runoff and pollutant loadings in runoff from selected watersheds and transport of the flow and pollutant runoff through stream reaches. The NPSM uses selected features from the HSPF comprehensive watershed model.

MODEL PARAMETER DEVELOPMENT:

Model default values, based on literature review and Georgia specific values, were developed for the fecal coliform loading and transport model used in this watershed analysis. Flow runoff from the land and flow in the stream are the driving forces for pollutant (fecal coliform) transport. The pollutant transport and water transport modules of NPSM computes the surface runoff, interflow and groundwater flow on pervious and impervious land segments. The stream reach hydrodynamic and quality modules calculates the channel flow and the pollutant decay through the stream channels. The parameters necessary to run this model are derived or estimated from existing land use data, rainfall data, available stream geometry information, land slope data, soil characteristics, literature values, best professional judgement, etc. A number of articles discussing fecal coliform nonpoint source loads were used to develop the default parameters. Georgia specific agriculture data and STASTGO data was used to adjust the parameter values.

Fecal Coliform Parameters:

Initial default value, determined from literature and adjusted to take into account Georgia climate and soils, were used initially for fecal coliform bacteria buildup and washoff parameters. Note: In this case, parameters for pasture were assigned the same values as agricultural and those for barren were assigned the same values as urban (pervious). The following values are the Georgia default values to use initially for fecal coliform bacteria buildup and washoff parameters.

ACQOP (rate of accumulation of fecal coliform) - buildup rates were derived from literature.

Urban Pervious	1.59 E +10 (count/ac-day)
Agriculture Pervious	7.6 0E +10
Pasture Pervious	7.60 E +10
Forest Pervious	1.33 E +09
Barren Pervious	1.59 E +10
Urban Impervious	5.01 E +08

SQOLIM (maximum storage of fecal coliform) - this was taken as 9 x ACQOP. The average number of days between storms for Georgia was determined, and this value was then multiplied by 1.5.

Urban Pervious	1.43 E +11 (count/ac-day)
Agriculture Pervious	6.84 E +11
Pasture Pervious	6.84 E +11
Forest Pervious	1.20 E +10

Barren Pervious	1.43 E +11
Urban Impervious	4.60 E +09

The agriculture loading and storage rates can be adjusted to better represent the agriculture activities in the county.

WSQOP (rate of surface runoff which will remove 90% of stored fecal coliform per hour). These are typical values for different land uses. This parameter is similar to the one used in SWMM.

Urban Pervious	4.2 (in / hr)
Agriculture Pervious	3.8
Pasture Pervious	3.8
Forest Pervious	3.2
Barren Pervious	4.2
Urban Impervious	5.2

IOQC and **AOQC** (concentration of the constituent in the interflow outflow and groundwater outflow, respectively). Interflow and groundwater flow bacteria concentrations were assumed to be the same. The value for AOQC has an apparent effect on model results, as it is essentially the bacteria concentration in the base flow. The default values will yield a base flow fecal concentration 20 cfu/100 ml.

Urban Pervious	7932.0 (count/ft ³)
Agriculture Pervious	9915.0
Pasture Pervious	9915.0
Forest Pervious	5666.0
Barren Pervious	7932.0

LSUR (maximum length of assumed overland flow path) and **SLSUR** (slope of assumed overland flow path). These parameters affect the timing of the overland flow, how long it takes the flow to reach a channel. Default values were used unless better information was available then these values were adjusted to reflect this information.

These rate of agriculture related accumulation and storage values were adjusted to reflect the amount of dry tons animal waste generated in the county. Adjustments were made to the agriculture loading and waste accumulation values based on an animal waste generated table in the USDA Georgia Watershed Agriculture Nonpoint Source Pollution Assessment August 1993 final report

Where monitoring data indicated a base flow fecal coliform levels consistently greater than 20 to 50 cfu/100ml and point sources are not the cause, the pervious concentration of fecal coliform in the interflow outflow and groundwater outflow (IOQC and AOQC) were increased in the appropriate land use category to match the general range of fecal coliform base levels measured. There could be numerous causes for this above normal fecal coliform level in base flow, including septic tank seepage, leaking sanitary sewers pipes, illicit connections, animal feed lots, etc.

Flow Parameters:

The runoff from the land types and the stream flows are calculated from land and soil runoff parameters and rainfall patterns. The runoff from the land and resultant flow in the stream were regionally calibrated to available USGS gage flow records.

DATA AVAILABILITY AND ANALYSIS:

Watershed Characteristics:

_____ watershed is located in _____ County. The following table list general watershed information needed by the NPSM model.

_____ Watershed		
Land Use:	Acres:	Pervious / Impervious (assumed)
Agriculture	289	100% Pervious
Urban	122 / 122	50% Pervious/ 50% Impervious
Forest	6915	100% Pervious
Barren	--	100% Pervious

Existing Data:

Existing fecal coliform data:

The available data used by Georgia in making 303(d) listing decisions was used to develop the model and the resultant TMDLs. The appendix contains these data or the reference to the report where the data were found.

Existing flow data:

The predicted stream flow data were based on a regional flow calibration to a USGS Gage.

Wastewater Treatment Facility data:

The following permitted wastewater treatment facilities (WTFs), greater than 0.1 mgd and non-industrial, are located in the watershed.

NONE

WTF fecal effluent data was not readily available. The assumption of wastewater concentration of 200cfu/100ml was made. This is the standard number that is in Georgia's NPDES permit limitation.

Model calibration process:

First, the predicted flows were compared to actual flows in the sub watershed, if available, to assure the model predictive instream flow values were in the same range of measured flow values for both base flow and rainfall events. If existing flows were not available then the regional flow parameters were assumed.

Second, the predicted fecal coliform concentrations were compared to available fecal coliform data, considering the base

flow levels, the rainfall induced levels and the overall pattern. The model parameters were adjusted as needed to provide a better calibration and with the attempt to be as realistic as possible. The adjusted parameters are listed in the appendix. Where limited fecal data were available, initial default parameters or parameters that were consistent with other watersheds in the region were used.

Step 5: TMDL Development

Background:

Current EPA guidance (1991) allows water quality-based effluent limits for toxics to be based on either steady state or dynamic water quality models. The intent in the use of both types of models is to limit the occurrence of instream toxicity to a frequency of no greater than once in three years.

The steady-state model provides predictions for only a single set of environmental conditions. For permitting purposes, steady-state models are applied for "critical" environmental conditions that represent extremely low assimilative capacity. For discharges to riverine systems, critical environmental conditions correspond to drought upstream flows. The assumption behind steady-state modeling is that permit limits that protect water quality during critical conditions will be protective for the large majority of environmental conditions which occur. While this assumption works reasonable well for point sources, it is not appropriate for nonpoint sources, the discharges from which occur in an episodic manner related to rain storms or to snow melt.

Continuous simulation generates daily values of stream flow and pollutant concentrations. With a well calibrated model, the simulated stream flows and pollutant concentrations represent the real-world conditions. Continuous simulation, as well as other dynamic modeling approaches, explicitly consider the variability in all model inputs, and define effluent limits which will be in direct compliance with the once in three year goal by basing the calculation on the biological flow (4B3) or the more traditionally used 7Q10 flow.

It is not appropriate to attempt to define a Critical stream flow for wet weather problems that is analogous to the critical (low flow) condition traditionally used with continuous point source discharges. Further more, even when continuous simulation is used for point source dischargers, the appropriate method of analysis is to examine the model generated data (receiving water concentrations) in terms of frequency and duration (as described below) rather than to examine concentrations at a Critical flow@ (e.g., 7Q10 or 4B3).

The Technical Support Document For Water Quality-Based Toxics Control (USEPA, 1991) states that daily receiving water concentrations can then be ranked from the lowest to the highest without regard to time sequence. A probability plot can be constructed from these ranked values, and the occurrence frequency of any 1-day concentration of interest can be determined. Running average concentrations for 4 days (i.e., the chronic design flow), or for any other averaging period (30-day geometric means), also can be computed from the daily concentrations. The probability plot generated by the continuous simulation model will indicate whether criteria are predicted to be exceeded more frequently than desired.

A long period of record, 20 years or more, is generally used to account for year-to-year variations in weather and resulting stream flows. It probably is reasonable to assume that spatial differences within the geographic confines of the river basin do not result in appreciable differences in the *pattern* of stream flow. Therefore, it is reasonable to conduct one (1) 20 year simulation for the purpose of identifying the year that has the combination of storm frequency and duration that results in the greatest number of criteria exceedences. The remainder of the simulations for this geographic area can then be conducted with a two year simulation where the second year uses meteorological data from the year that resulted in the greatest number of exceedences. (The first year of the simulation conditions the model so that initial conditions do not effect the results.)

Critical condition determination:

For these TMDLs the time period 1973 through 1992 was evaluated to select a critical time period. Based on an evaluation of the period of record, the summer time period of May through October, 1987 was selected for a representative summer time critical period and November, 1987 through April 1988 as a representative winter time critical period.

Total maximum daily loads (TMDLs):

Total maximum daily loads (TMDLs) are comprised of the sum of individual wasteload allocations (WLAs) for point sources, and load allocations (LAs) for both nonpoint sources and natural background levels for a given watershed. The sum of these components may not result in the accedence of water quality standards (WQSs) for that watershed. In addition, the TMDL must include a margin of safety (MOS), either implicitly or explicitly, that accounts for the uncertainty in the relation between pollutant loads and the quality of the receiving water body. Conceptually, this definition is denoted by the equation:

$$\text{TMDL} = \Sigma \text{WLAs} + \Sigma \text{LAs} + \text{MOS}$$

The TMDL is the total amount of pollutant that can be assimilated by the receiving water body while achieving water quality standards. TMDLs establish allowable water body loadings that are less than or equal to the TMDL and thereby provide the basis to establish water-quality-based controls.

For some pollutants, TMDLs are expressed on a mass loading basis (e.g., pounds per day). For bacteria, however, TMDLs can be expressed in terms of organism counts (or resulting concentration), in accordance with 40 CFR 130.2(I): TMDLs can be expressed in terms of mass per time, toxicity, or other appropriate measure, and NPDES regulations at 40 CFR 122.45(f): All pollutants limited in permits shall have limitations ...expressed in terms of mass except...pollutants which cannot appropriately be expressed by mass. The TMDL equation does require that the sum of WLAs, LAs, and MOS not exceed the loading capacity. This may require evaluation of each source on a loading basis (even if effluent limits are expressed as concentration) to determine the resulting in stream load and concentration.

The margin of safety (MOS) is part of the TMDL development process. There are two basic methods for incorporating the MOS (USEPA, 1991a):

1. Implicitly incorporate the MOS using conservative model assumptions to develop allocations, or
2. Explicitly specify a portion of the total TMDL as the MOS; use the remainder for allocations.

The MOS is incorporated implicitly into this modeling process by selecting a critical time period and critical default values for each of the summer and winter seasons and running a dynamic model simulating daily fecal coliform instream values. The model results are compared against the Georgia WQS for geometric mean of 200cfu/100ml for summer and 1000 cfu/100ml for winter. Note that during high strong rainfall events that instantaneous winter fecal coliform criteria will not be met, at all times, even in undisturbed areas. This is to be expected because the basis for the fecal coliform criteria is EPA Ambient Quality for Bacteria - 1986 and the 1976 Redbook - Quality Criteria for Water and this criteria recommends sampling for compliance is during steady state (non rainfall) conditions.

Where limited flow and fecal coliform data were available and the model results compared favorably to the measured data a MOS value of 25 cfu/100 ml was incorporated into the TMDL. Where limited fecal coliform data and no stream specific flow data were available an additional explicit MOS value of 50 cfu/100 ml was incorporated into the TMDL. A degree of profession judgement was used to select the appropriate MOS. Fecal coliform and flow data were available and the model match the high monitored fecal coliform peaks, therefore a 25 cfu /100 ml MOS plus the built in implicit MOS was used.

For _Acorn Creek watershed, the target TMDL level is 175 cfu/100 ml.

Step 6. Allocation of Responsibility

Objective: *Develop recommendations for load allocation which are distributed among the various point and nonpoint sources.*

Existing loadings:

The model was run for the 1987 and 1988 critical time periods (Step 5) using the "calibrated" fecal and flow parameters as determined in Step 4. This model run resulted in a summer fecal coliform 30 day geometric mean of ~ 110 cfu/100 ml. This meets the TMDL target level and no additional reductions are needed.

The loading capacity and the allocation of loads were developed for the major land use groups and point source discharges contributing fecal coliform loads in the watershed. The allocation of loads meet the regulatory requirements of 40 CFR 130.2(g) in that they are "best estimates of the loading, which may range from reasonably accurate measurements to gross allotments..."

This allocation of fecal "loads" to the watershed is applied as:

- ▶ fecal counts per acre per day, the ACQOP (rate of accumulation of fecal coliform);
- Concentration of interflow outflow from watershed to stream, the IOQC; and
- ▶ Concentration of groundwater outflow from watershed to stream, the AOQC

terms in the Non Point Source Model (NPSM). This meets the regulatory definition that "TMDLs can be expressed in terms of either mass per time, toxicity units, or other appropriate measure," (40 CFR 130.2) This annual TMDL could be converted into daily loads, but expressing the TMDL as a daily average counts per acre per day and concentration in interflow and groundwater better reflects the major land use groups contributions and direct sources of fecal coliform contribution to the interflow and groundwater, such as septic tanks and leaky sewage pipes.

In the following "Watershed Load Allocation" table, the final loading rate column (ACQOP, IOQC and AOQC) expresses the allocation of the fecal "loads" to the watershed. For a more complete explanation of how these terms are incorporated in the NPSM see the HSPF10 or HSPF11 User Manual.

This TMDL is based on the limited fecal coliform data that was readily available and used to put the stream segment on the 303(d) list. No watershed specific or stream specific modeling data were collected. This TMDL should be considered a level 1 TMDLs that is useful in making screening level decisions, used as one factor to priority rank the watersheds for additional monitoring or for planning the implementation of pollution controls, and/or determine additional intensive monitoring needs to better define the cause and effect relationships. Updated land use and flow monitoring would increase the confidence of the model results.

FINAL AGENCY ACTION



Robert F. McGhee, Director
Water Management Division
EPA Region 4

xxxx Watershed Load Reduction Scenario				
Land Type	Acres	Initial Loading Rate	Percent Reduction	Final Loading Rate
		ACQOP (rate of accumulation of fecal coliform)		ACQOP (rate of accumulation of fecal coliform)
Urban Pervious	122	1.59 E +10 (count/ac-day)		
Urban Impervious	122	5.01 E +08		
Forest Pervious	6915	1.33 E +09		
Barren Pervious		1.59 E +10		
Agriculture Pervious	289	7.6 0E +10		
	-----	Initial IOQC and AOQC (concentration of the constituent in the interflow outflow and groundwater outflow)	-----	Final IOQC and AOQC (concentration of the constituent in the interflow outflow and groundwater outflow)
All land uses	-----	Default Values		

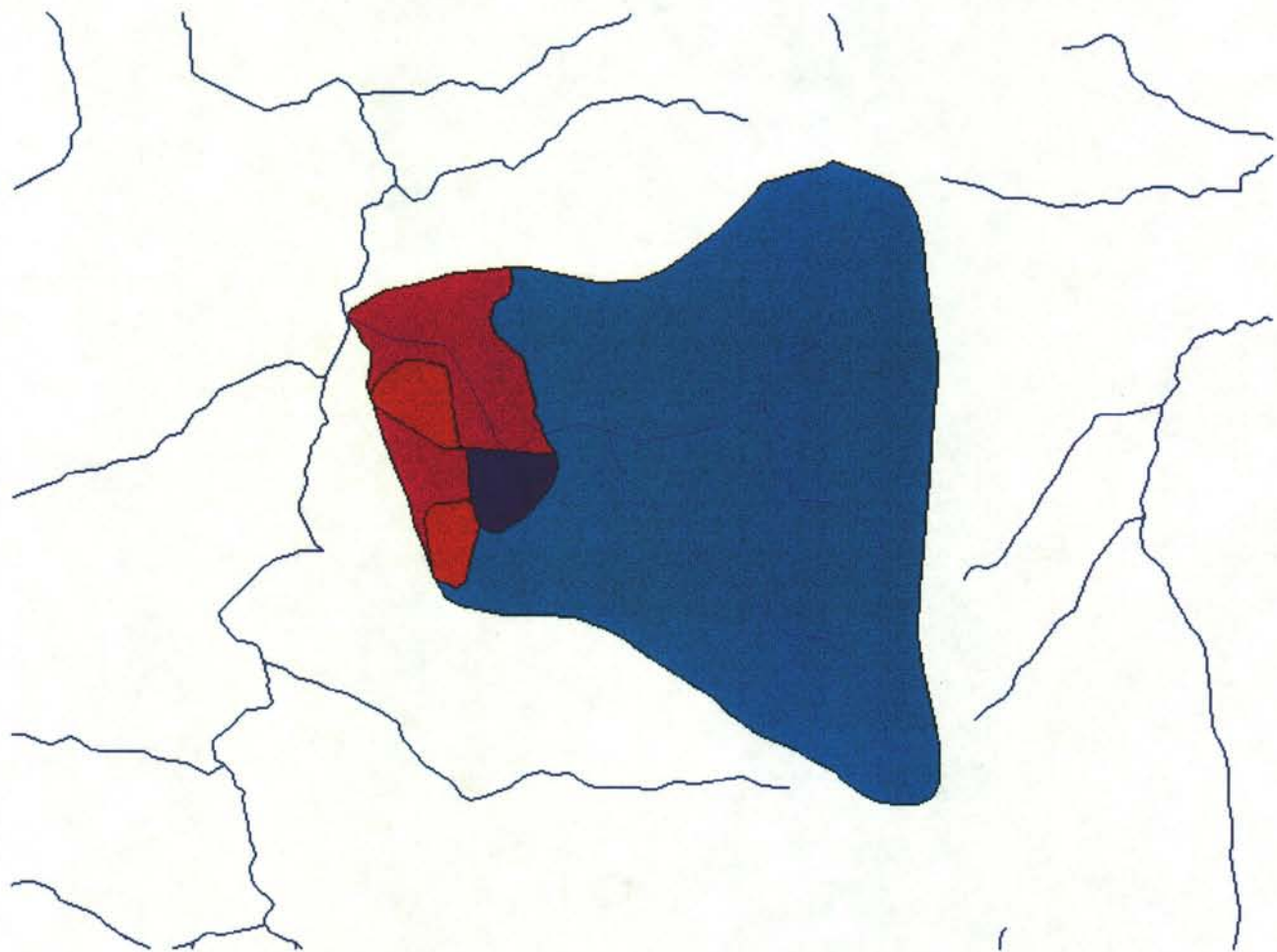
Technical Modeling Appendix:

Primary Runoff Coefficients		
INFILT	.016	add description
IRC	0.5	
DEEPFR	0.1	add description
LSUR	600	
SLSUR	.035	

Default parameter values are 300 feet for LSUR and 0.035 ft/ft for SLSUR. LSUR also was estimated at 25% of the average watershed width and SLSUR adjusted to 0.015 ft/ft for the coastal plain region

Other Watershed Characteristics		
Major county:	Douglas	
Nearby meteorological station:	Atlanta	
Basin Slope (ft/ft)	0.02	
Stream Slope (ft/mile)	15	
Watershed Elevation (ft)	700	
Stream Length (miles)	2	

NPSM - Land Use Corn Creek



S6020002.shp
Selected Land Use

Red	RESIDENTIAL
Dark Blue	COMMERCIAL AND SERVICES
Dark Red	CROPLAND AND PASTURE
Blue	DECIDUOUS FOREST LAND

